

APPROVED BY THE UNIVERSITY  
BOARD OF REGENTS  
APR 23 1999

Date

SENIOR VICE PRESIDENT FOR RESEARCH AND  
DEAN OF THE GRADUATE DIVISION

STATE OF HAWAII  
UNIVERSITY OF HAWAII  
UNIVERSITY OF HAWAII AT MANOA  
COLLEGE OF TROPICAL AGRICULTURE AND HUMAN RESOURCES  
ORGANIZATIONAL CHART  
CHART XLI

OFFICE OF THE DEAN\*  
CHART XLI-A

OFFICE OF PUBLICATIONS AND INFORMATION  
CHART XLI-B

OFFICE OF ADMINISTRATIVE SERVICES  
CHART XLI-C

OFFICE OF PLANNING AND MANAGEMENT SYSTEMS  
CHART XLI-D

OFFICE OF THE ASSOCIATE DEAN  
FOR ACADEMIC AND  
STUDENT AFFAIRS  
CHART XLI-E

OFFICE OF THE ASSOCIATE DEAN  
AND ASSOCIATE DIRECTOR  
FOR RESEARCH  
CHART XLI-F

OFFICE OF THE ASSOCIATE DEAN  
AND ASSOCIATE DIRECTOR  
FOR COOPERATIVE EXTENSION  
CHART XLI-G

INSTRUCTION PROGRAM  
CHART XLI-H

EXTENSION  
PROGRAMS  
CHART XLI-U,V

COUNTY  
ADMINISTRATION  
CHART  
XLI-X,Y,Z,AA,BB,CC,DD

ENVIRONMENTAL BIOCHEMISTRY  
BIOSYSTEMS ENGINEERING  
AGRICULTURAL & RESOURCE ECONOMICS  
AGRONOMY & SOIL SCIENCE  
ANIMAL SCIENCES  
PLANT MOLECULAR PHYSIOLOGY

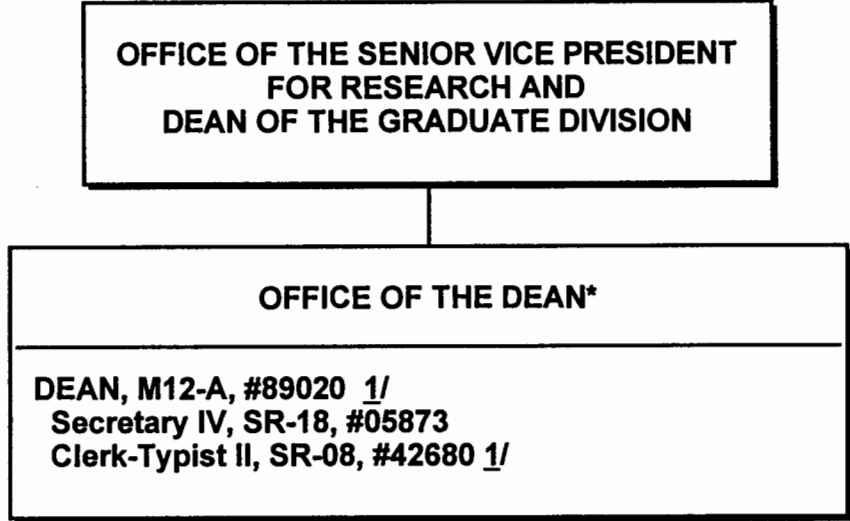
CHART I  
CHART J  
CHART K  
CHART L  
CHART M  
CHART N

ENTOMOLOGY  
FOOD SCIENCE & HUMAN NUTRITION  
HORTICULTURE  
PLANT PATHOLOGY  
HUMAN RESOURCES

CHART O  
CHART P  
CHART Q  
CHART R  
CHART S

\* & Director of Research and Cooperative Extension

STATE OF HAWAII  
UNIVERSITY OF HAWAII  
UNIVERSITY OF HAWAII AT MANOA  
COLLEGE OF TROPICAL AGRICULTURE AND HUMAN RESOURCES  
OFFICE OF THE DEAN  
POSITION ORGANIZATION CHART: XLI-A



APPROVED PURSUANT TO BOR ACTION:

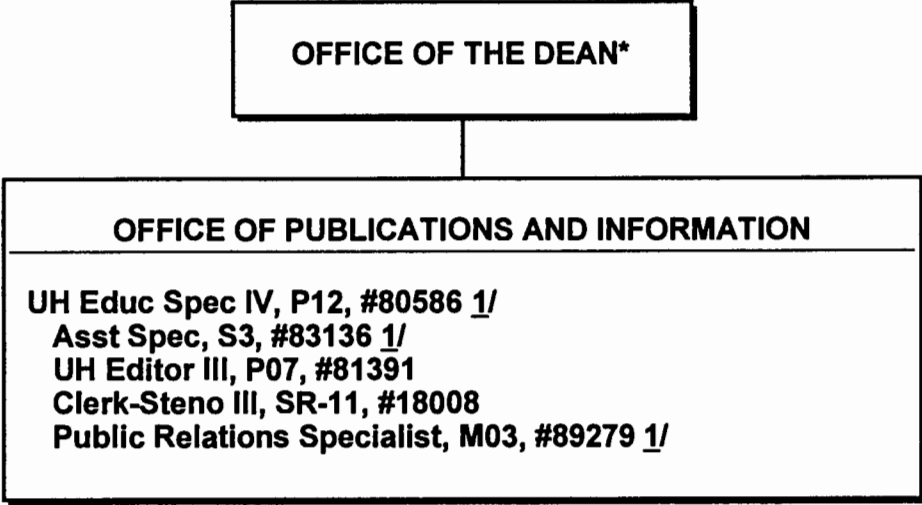
DEAN SMITH  
SENIOR VICE PRESIDENT AND EXECUTIVE VICE CHANCELLOR UH MANOA

DATE: APR 23 1999

\* & Director of Research and Cooperative Extension  
1/ Position to be redescribed.

STATE OF HAWAII  
UNIVERSITY OF HAWAII  
UNIVERSITY OF HAWAII AT MANOA  
COLLEGE OF TROPICAL AGRICULTURE AND HUMAN RESOURCES

OFFICE OF PUBLICATIONS AND INFORMATION  
POSITION ORGANIZATION CHART: XLI-B



APPROVED PURSUANT TO BOR ACTION:

  
DEAN SMITH

SENIOR VICE PRESIDENT AND EXECUTIVE VICE CHANCELLOR UH MANOA

DATE: APR 23 1999

\* & Director of Research and Cooperative Extension  
1/ Position to be redescribed

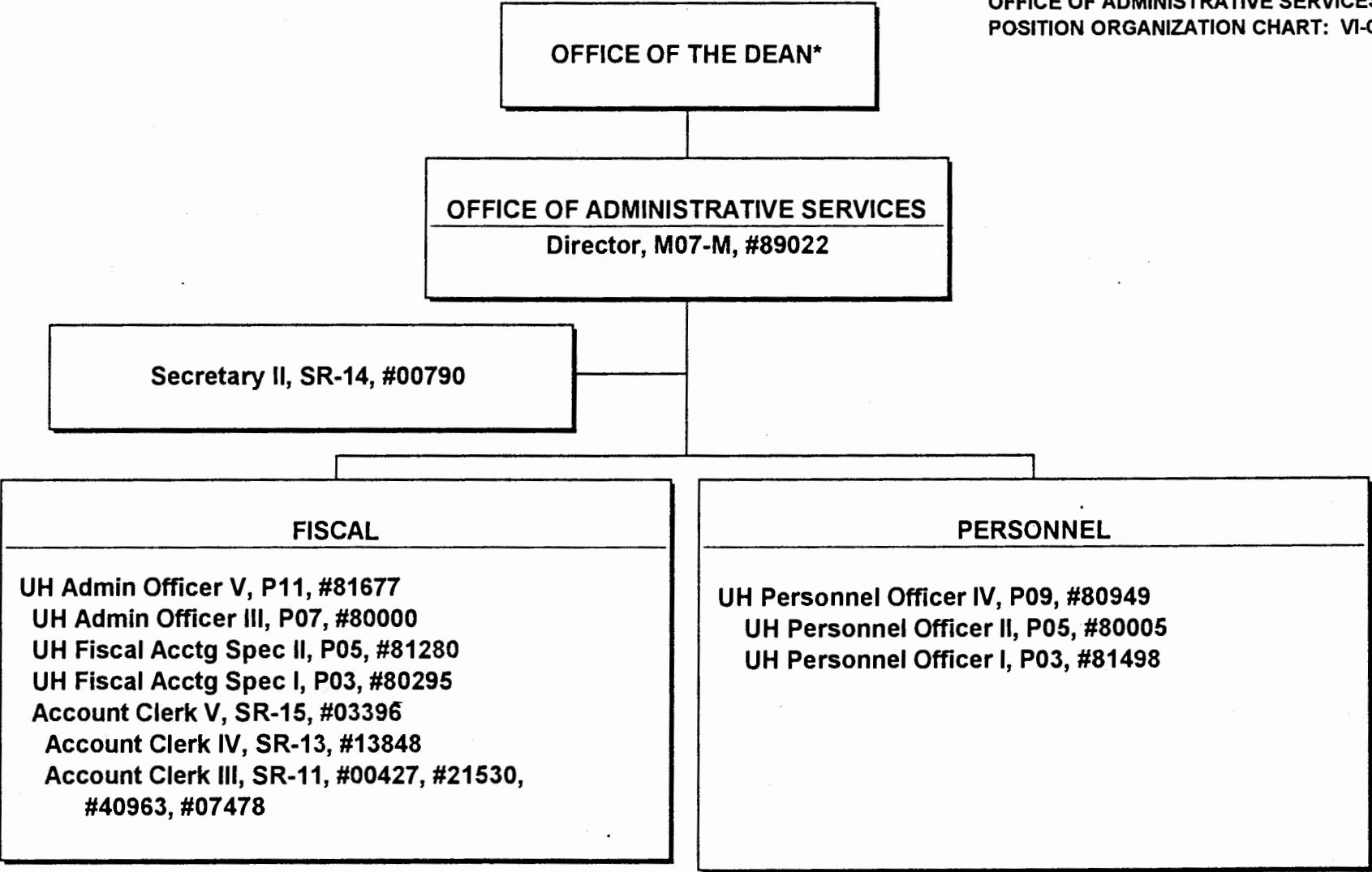


CHART UPDATED

DATE JUL - 1 1998

\* & Director of Cooperative Science & Education

STATE OF HAWAII  
UNIVERSITY OF HAWAII  
UNIVERSITY OF HAWAII AT MANOA  
COLLEGE OF TROPICAL AGRICULTURE AND HUMAN RESOURCES

OFFICE OF PLANNING AND MANAGEMENT SYSTEMS  
POSITION ORGANIZATION CHART: VI-E

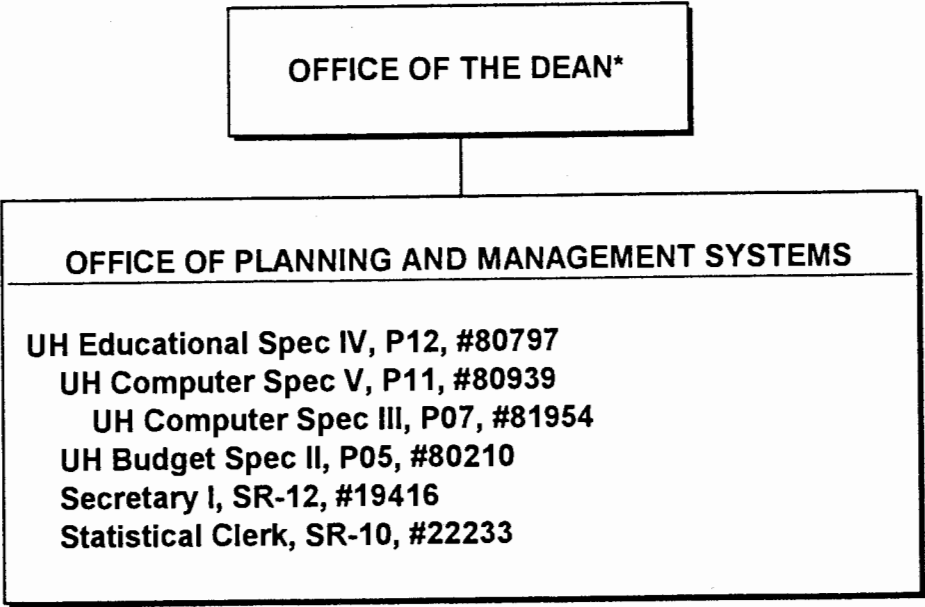
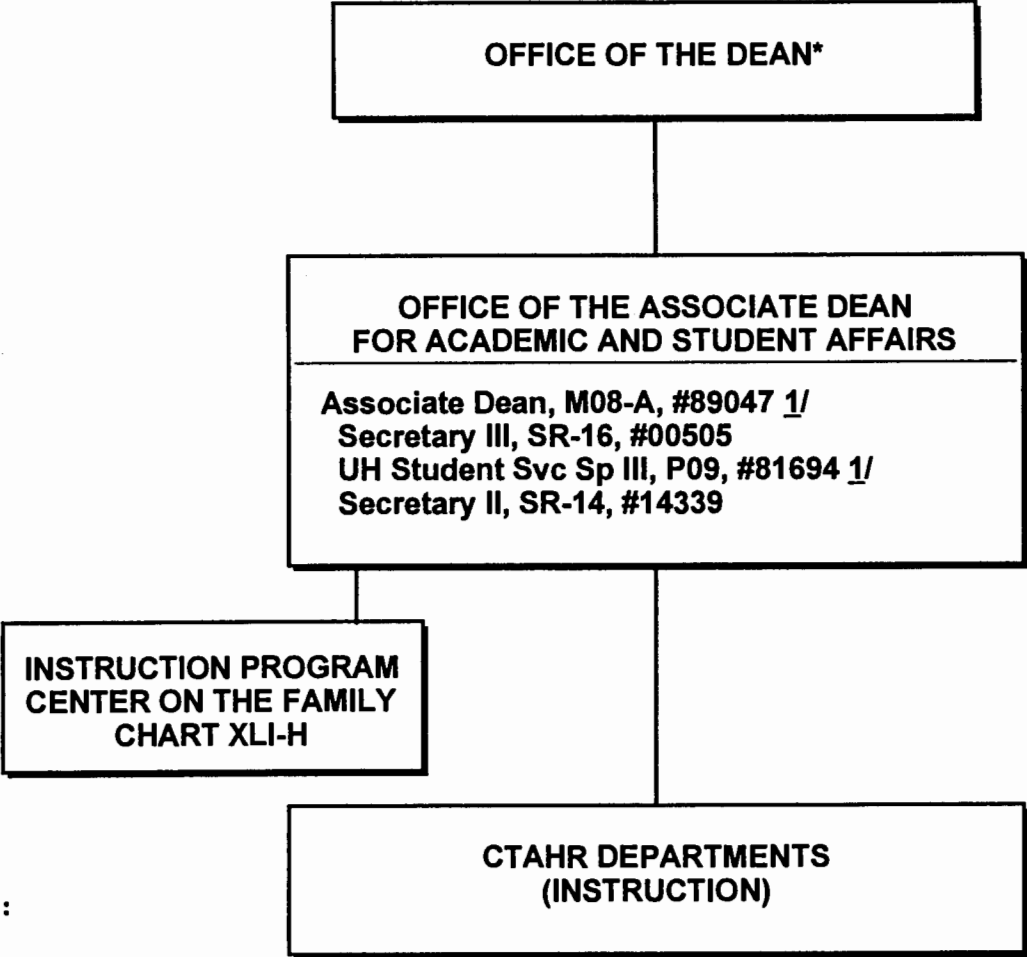


CHART UPDATED  
DATE JUL - 1 1998

\* & Director of Cooperative Science & Education



APPROVED PURSUANT TO BOR ACTION:

  
DEAN SMITH

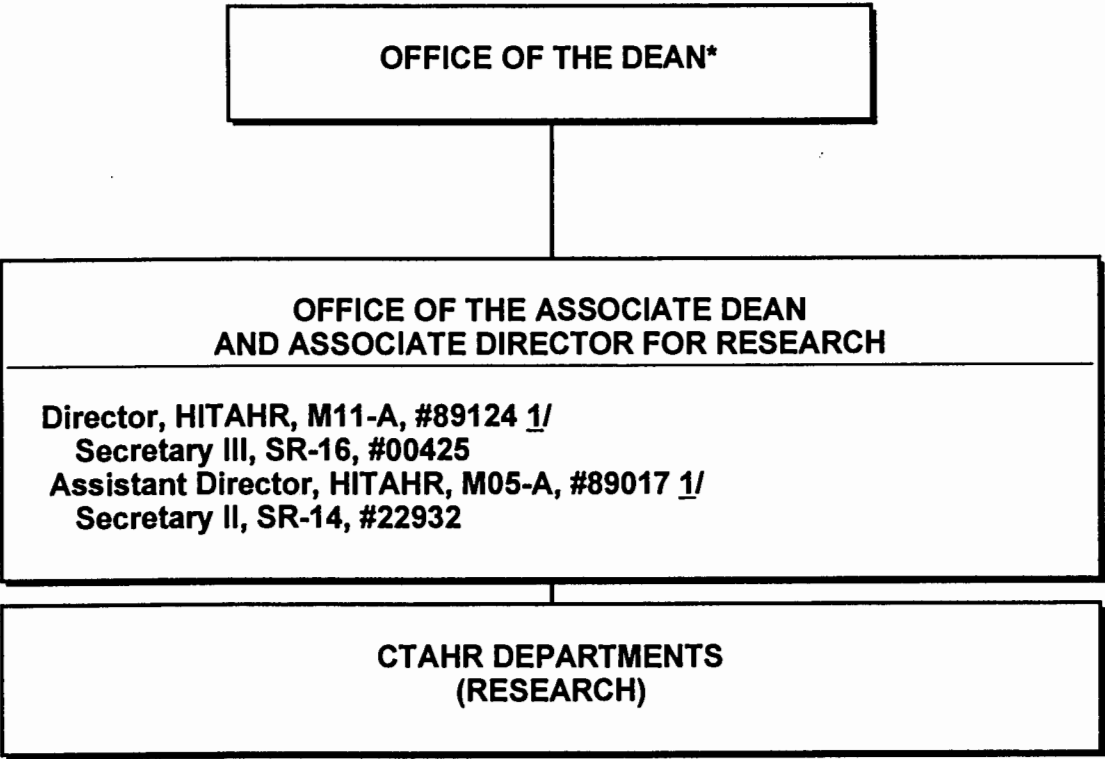
SENIOR VICE PRESIDENT AND EXECUTIVE VICE CHANCELLOR UH MANOA

DATE: APR 23 1999

\* & Director of Research and Cooperative Extension  
1/ Position to be redescribed

STATE OF HAWAII  
UNIVERSITY OF HAWAII  
UNIVERSITY OF HAWAII AT MANOA  
COLLEGE OF TROPICAL AGRICULTURE AND HUMAN RESOURCES

OFFICE OF THE ASSOCIATE DEAN AND ASSOCIATE DIRECTOR FOR RESEARCH  
POSITION ORGANIZATION CHART: XLI-F



APPROVED PURSUANT TO BOR ACTION:

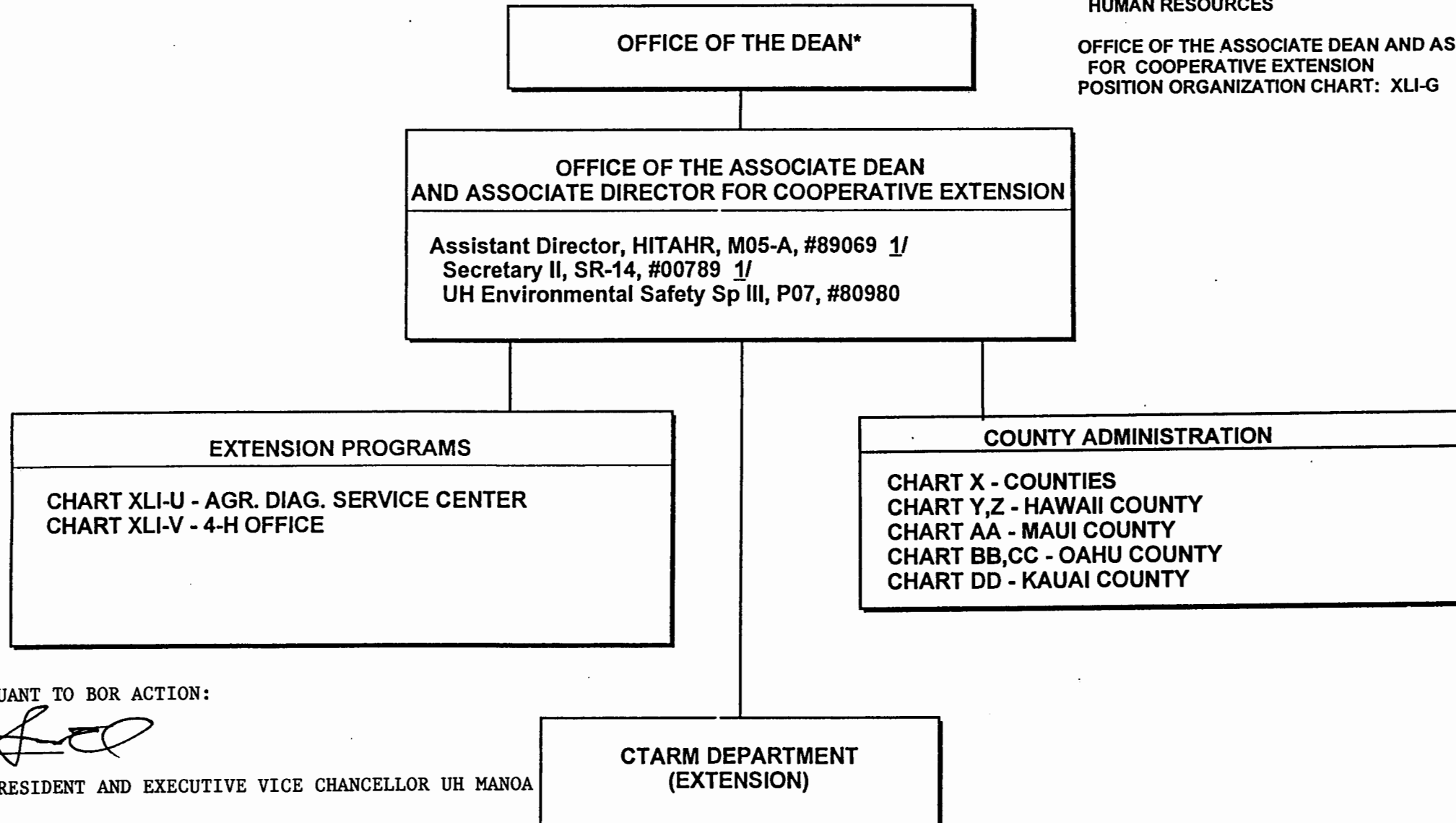
DEAN SMITH  
SENIOR VICE PRESIDENT AND EXECUTIVE VICE CHANCELLOR UH MANOA

DATE: APR 23 1999

\* & Director of Research and Cooperative Extension  
1/ Position to be redescribed.

STATE OF HAWAII  
UNIVERSITY OF HAWAII  
UNIVERSITY OF HAWAII AT MANOA  
COLLEGE OF TROPICAL AGRICULTURE AND  
HUMAN RESOURCES

OFFICE OF THE ASSOCIATE DEAN AND ASSOCIATE DIRECTOR  
FOR COOPERATIVE EXTENSION  
POSITION ORGANIZATION CHART: XLI-G



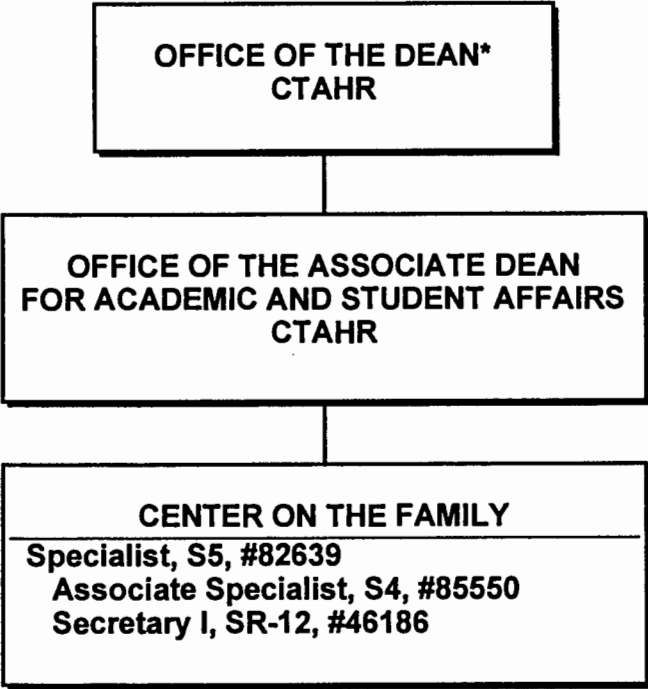
APPROVED PURSUANT TO BOR ACTION:

DEAN SMITH  
SENIOR VICE PRESIDENT AND EXECUTIVE VICE CHANCELLOR UH MANOA

DATE: APR 23 1999

\* & Director of Research and Cooperative Extension  
1/ Position to be redescribed.





APPROVED PURSUANT TO BOR ACTION:

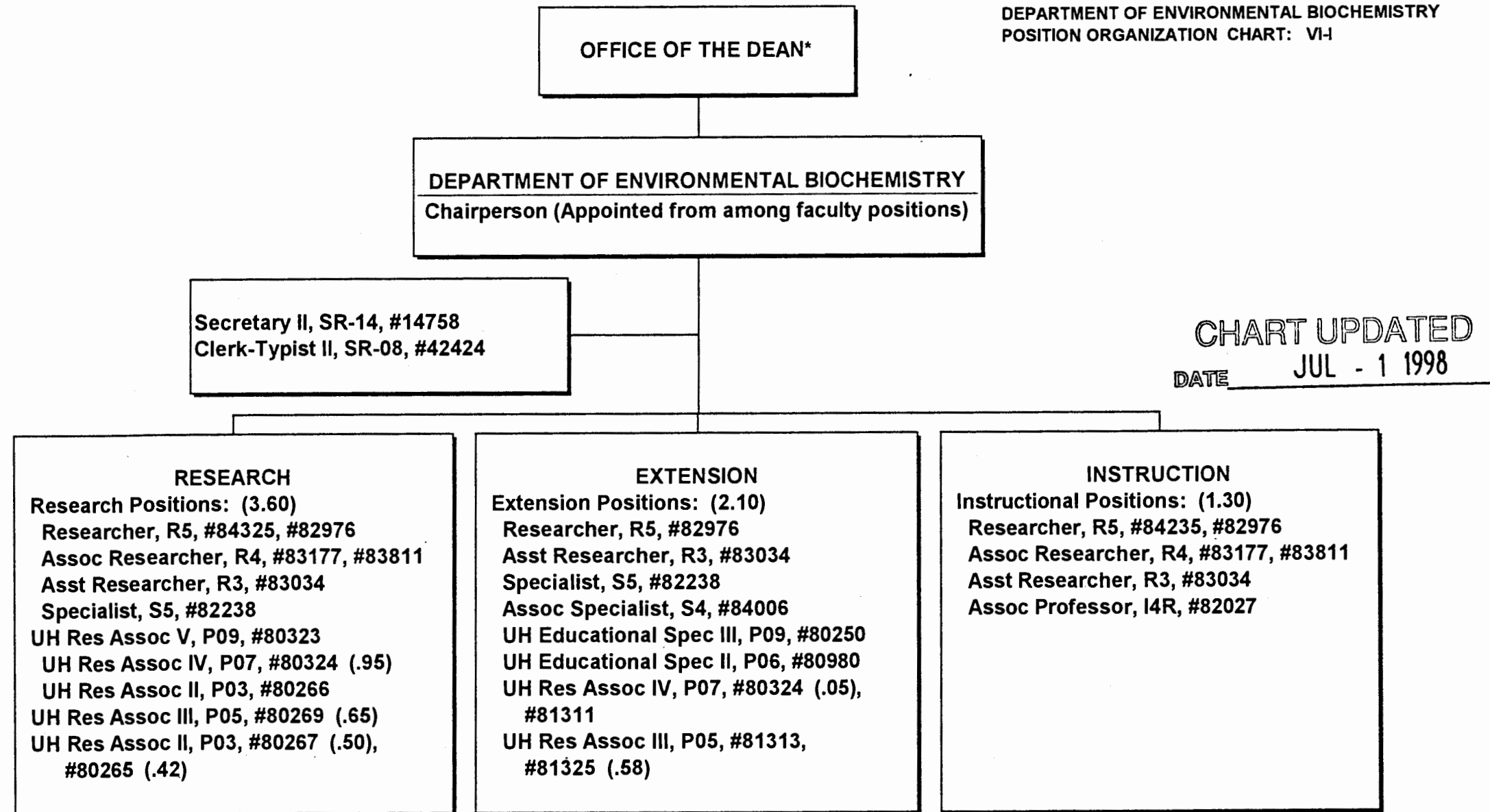
DEAN SMITH  
SENIOR VICE PRESIDENT AND EXECUTIVE VICE CHANCELLOR UH MANOA

DATE: APR 23 1999

\*& Director of Research and Cooperative Extension

STATE OF HAWAII  
UNIVERSITY OF HAWAII  
UNIVERSITY OF HAWAII AT MANOA  
COLLEGE OF TROPICAL AGRICULTURE AND HUMAN RESOURCES

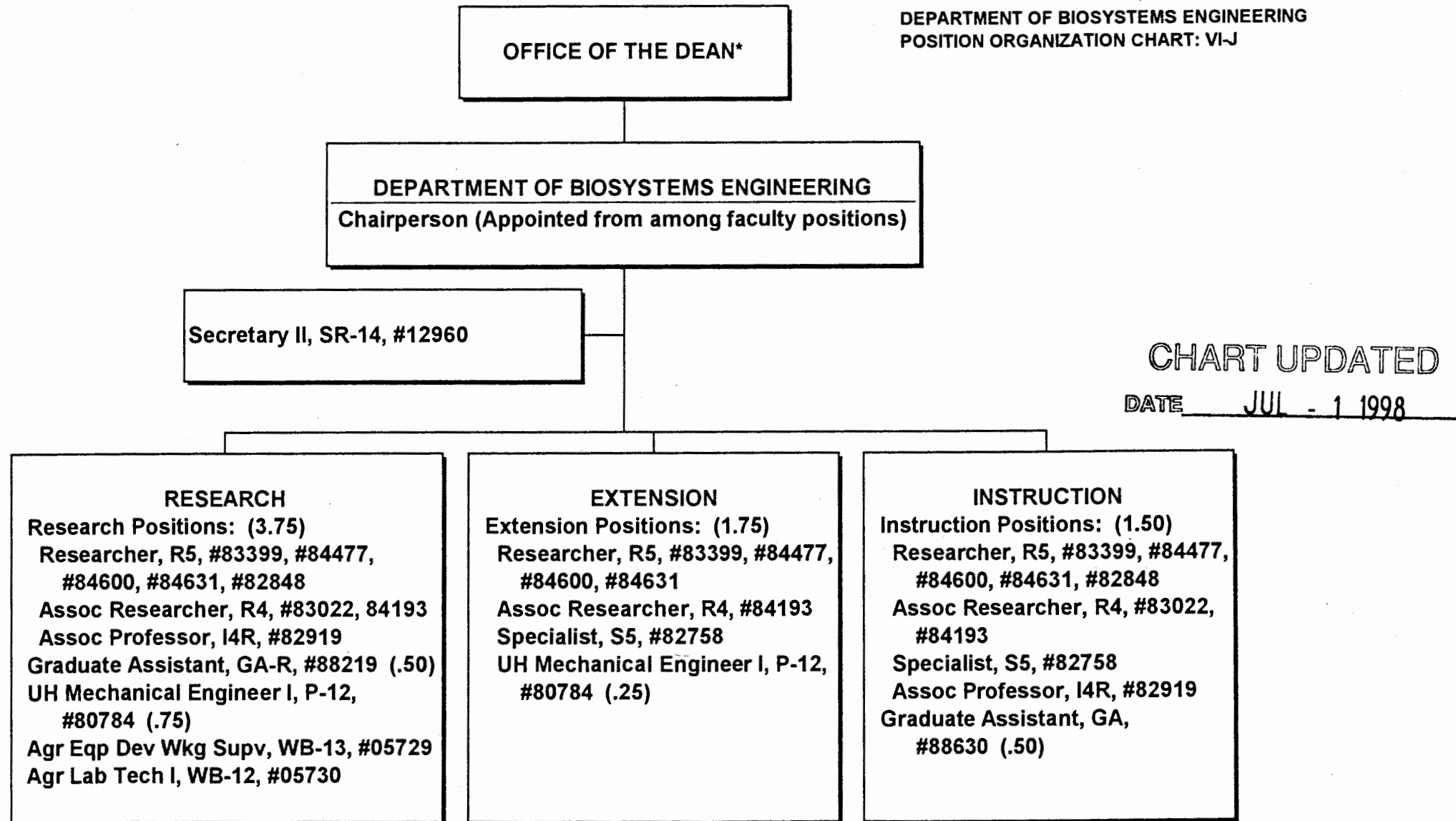
DEPARTMENT OF ENVIRONMENTAL BIOCHEMISTRY  
POSITION ORGANIZATION CHART: VI-I



\* & Director of Cooperative Science & Education

STATE OF HAWAII  
UNIVERSITY OF HAWAII  
UNIVERSITY OF HAWAII AT MANOA  
COLLEGE OF TROPICAL AGRICULTURE AND HUMAN RESOURCES

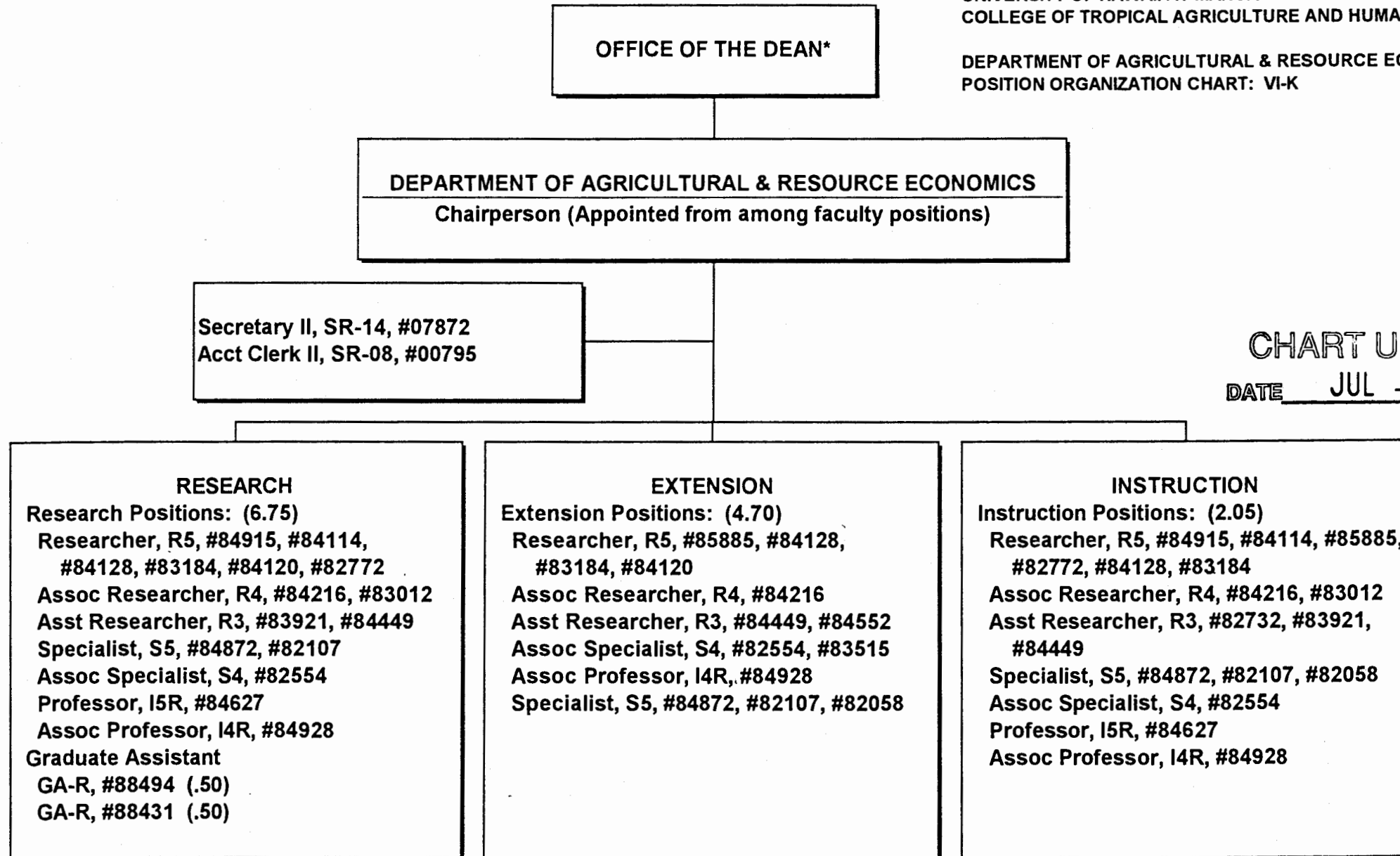
DEPARTMENT OF BIOSYSTEMS ENGINEERING  
POSITION ORGANIZATION CHART: VI-J



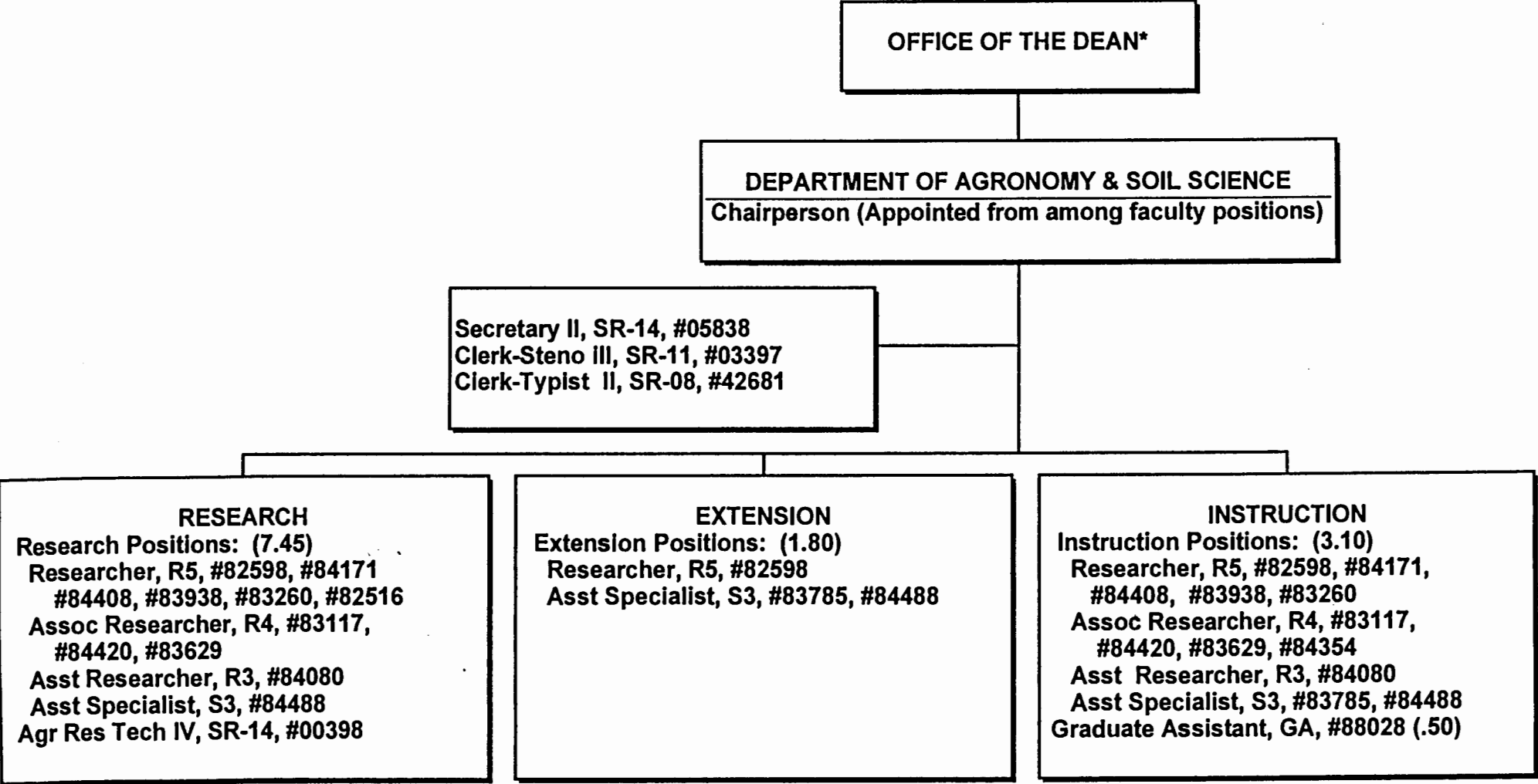
\* & Director of Cooperative Science & Education

STATE OF HAWAII  
UNIVERSITY OF HAWAII  
UNIVERSITY OF HAWAII AT MANOA  
COLLEGE OF TROPICAL AGRICULTURE AND HUMAN RESOURCES

DEPARTMENT OF AGRICULTURAL & RESOURCE ECONOMICS  
POSITION ORGANIZATION CHART: VI-K



\* & Director of Cooperative Science & Education



APPROVED PURSUANT TO BOR ACTION:

  
DEAN SMITH

SENIOR VICE PRESIDENT AND EXECUTIVE VICE CHANCELLOR UH MANOA

DATE: ~~APR 23~~ 1999

\* & Director of Research and Cooperative Extension

**OFFICE OF THE DEAN\***

**DEPARTMENT OF ANIMAL SCIENCES**

**Chairperson (Appointed from among faculty positions)**

**Secretary II, SR-14, #00801**  
**Clerk-Typist II, SR-08, #00424, #42682**

STATE OF HAWAII  
UNIVERSITY OF HAWAII  
UNIVERSITY OF HAWAII AT MANOA  
COLLEGE OF TROPICAL AGRICULTURE AND HUMAN RESOURCES

DEPARTMENT OF ANIMAL SCIENCES  
POSITION ORGANIZATION CHART: VI-M

**CHART UPDATED**

**DATE JUL - 1 1998**

**RESEARCH**

**Research Positions: (4.55)**

**Researcher, R5, #83862, #84454,  
#83735, #84049**

**Assoc Researcher, R4, #82248, #84496,  
#84228, #84070, #83633**

**Specialist, S5, #83830**

**Assoc Specialist, S4, #84323, #83553,  
#83017**

**Graduate Assistant, GA-R, #88303 (.50)**

**UH Res Assoc V, P09, #80410**

**UH Res Assoc IV, P07, #80392**

**UH Computer Spec IV, P09, #80037 (.50)**

**Agr Res Tech VI, SR-18, #00428**

**Agr Res Tech V, SR-16, #00395, #00396,  
#00432, #11024**

**Agr Res Tech IV, SR-14, #00433**

**Agr Res Tech III, SR-11, #03712, #00418,  
#00434**

**Agr Res Aid II, SR-9, #00410, #00441,  
#04481, #04484, #15515**

**Equipment Operator III, WB-09, #00419**

**EXTENSION**

**Extension Positions: (3.20)**

**Assoc Researcher, R4, #83070, #84496,  
#82248**

**Specialist, S5, #83830**

**Assoc Specialist, S4, #84323, #83553,  
#83017**

**UH Computer Spec IV, P09, #80037 (.50)**

**INSTRUCTION**

**Instruction Positions: (2.25)**

**Researcher, R5, #83862, #84454,  
#83735, #84049**

**Assoc Researcher, R4, #82248, #84496,  
#84228, #84070, #83633**

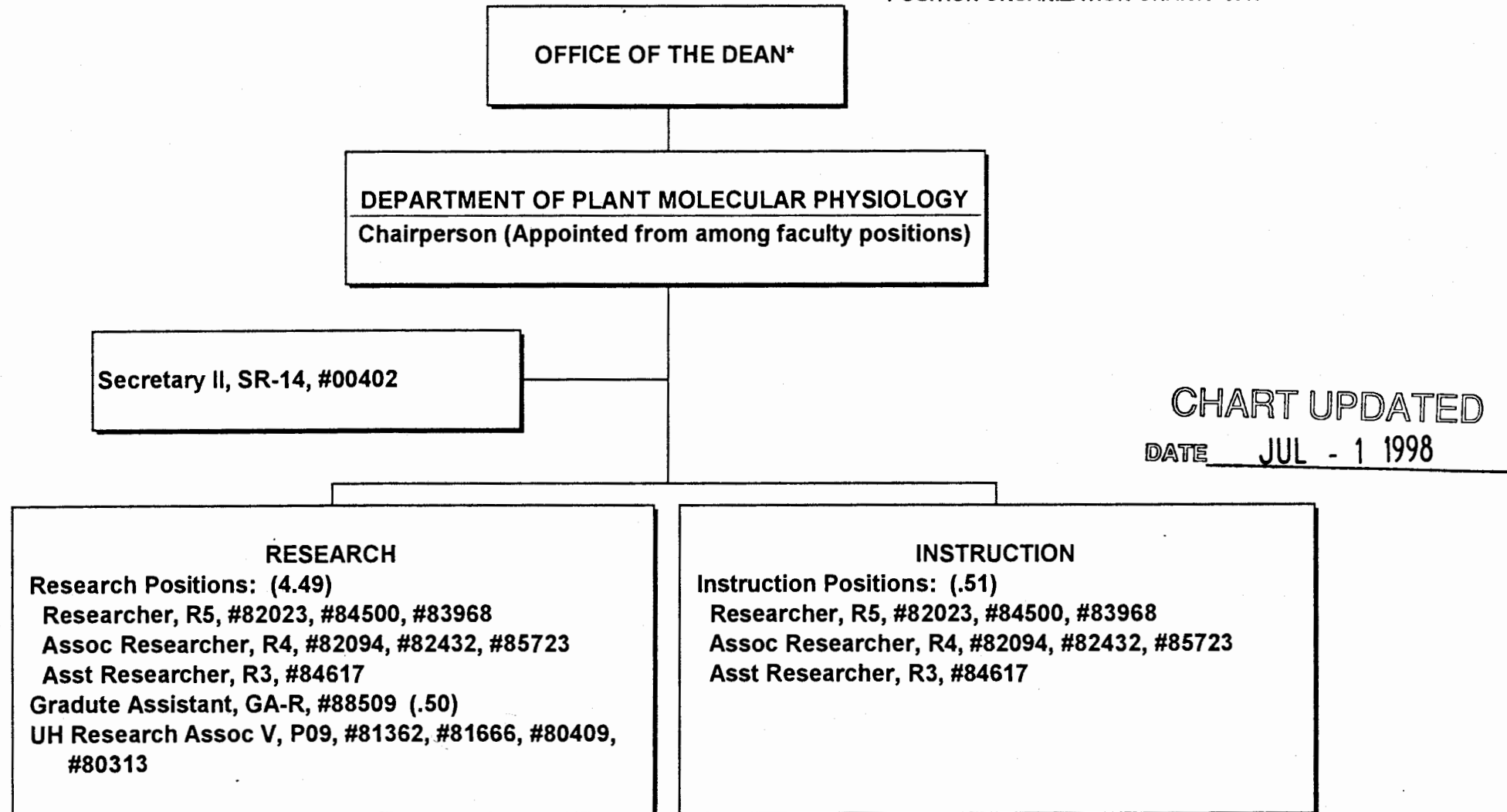
**Specialist, S5, #83830**

**Assoc Specialist, R4, #84323, #83553,  
#83017**

**Graduate Assistant, GA, #88165**

STATE OF HAWAII  
UNIVERSITY OF HAWAII  
UNIVERSITY OF HAWAII AT MANOA  
COLLEGE OF TROPICAL AGRICULTURE AND HUMAN RESOURCES

DEPARTMENT OF PLANT MOLECULAR PHYSIOLOGY  
POSITION ORGANIZATION CHART: VI-N



STATE OF HAWAII  
UNIVERSITY OF HAWAII  
UNIVERSITY OF HAWAII AT MANOA  
COLLEGE OF TROPICAL AGRICULTURE AND HUMAN RESOURCES

DEPARTMENT OF ENTOMOLOGY  
POSITION ORGANIZATION CHART: VI-O

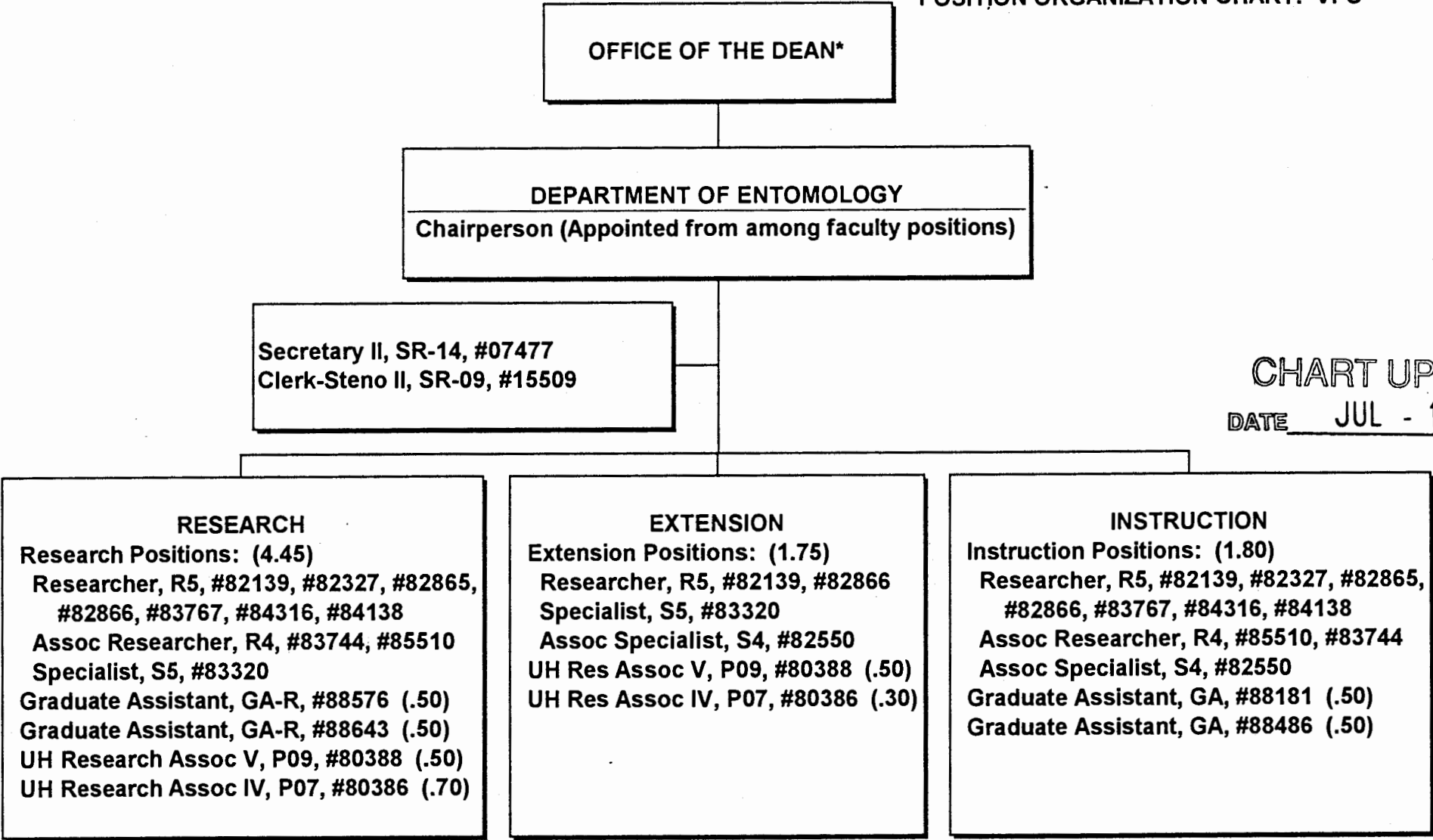


CHART UPDATED  
DATE JUL - 1 1998

\* & Director of Cooperative Science & Education



STATE OF HAWAII  
UNIVERSITY OF HAWAII  
UNIVERSITY OF HAWAII AT MANOA  
COLLEGE OF TROPICAL AGRICULTURE AND HUMAN RESOURCES

DEPARTMENT OF FOOD SCIENCE AND HUMAN NUTRITION  
POSITION ORGANIZATION CHART: VI-P

OFFICE OF THE DEAN\*

DEPARTMENT OF FOOD SCIENCE AND HUMAN NUTRITION  
Chairperson (Appointed from among faculty positions)

Secretary II, SR-14, #15512  
Clerk-Steno III, SR-11, #12195  
Clerk-Typist II, SR-08, #15513

CHART UPDATED

DATE JUL - 1 1998

**RESEARCH**

Research Positions: (5.74)

Researcher, R5, #83402, #83690,  
#83765

Assoc Researcher, R4, #84433, #83742,  
#84227, #82945

Jr Researcher, R2, #82661

Specialist, S5, #83846 (.15), #83682

Assoc Professor, I4R, #84512, #84920

Assoc Professor, I4, #84668

Instructor, I2, #82906

Graduate Assistant, GA-R, #88088 (.50)  
#88438 (.50)

Food Processor IV, F-10, #07979

Lab Asst III, SR-10, #00707

**EXTENSION**

Extension Positions: (1.15)

Researcher, R5, #83690

Specialist, S5, #83682

Junior Specialist, S2, #83851

Instructor, I2, #82906

**INSTRUCTION**

Instruction Positions: (6.61)

Researcher, R5, #83402, #83690,  
#83765

Assoc Researcher, R4, #84433, #83742,  
#84227, #82945

Jr Researcher, R2, #82661

Specialist, S5, #83846, #83682

Jr Specialist, S2, #87552

Assoc Professor, I4R, #84512, #84920

Assoc Professor, I4, #84668

Asst Professor, I3, #83497

Instructor, I2, #82906, #83851,  
#84919

\* & Director of Cooperative Science & Education

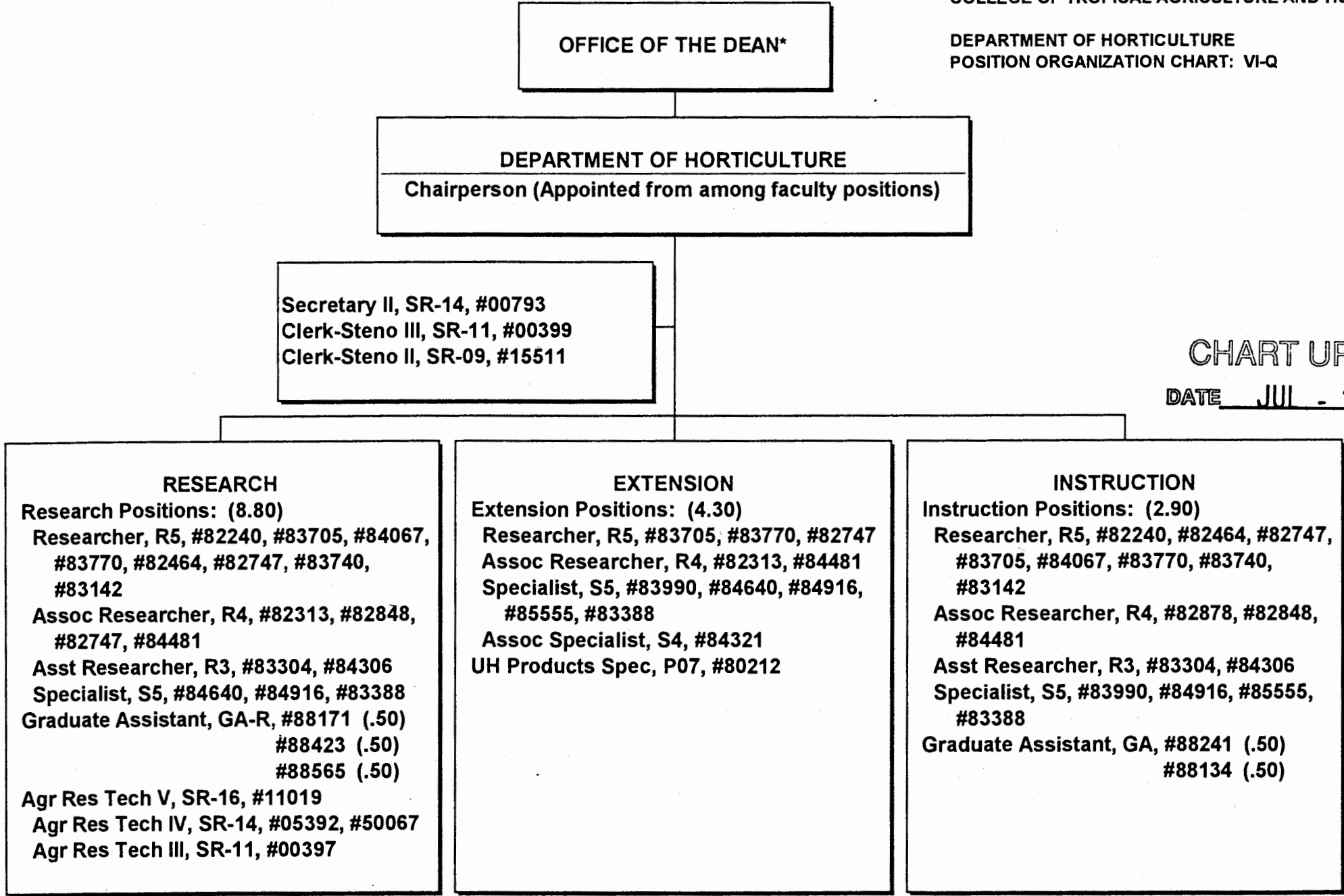


CHART UPDATED

DATE JUL - 1 1998

\* & Director of Cooperative Science & Education

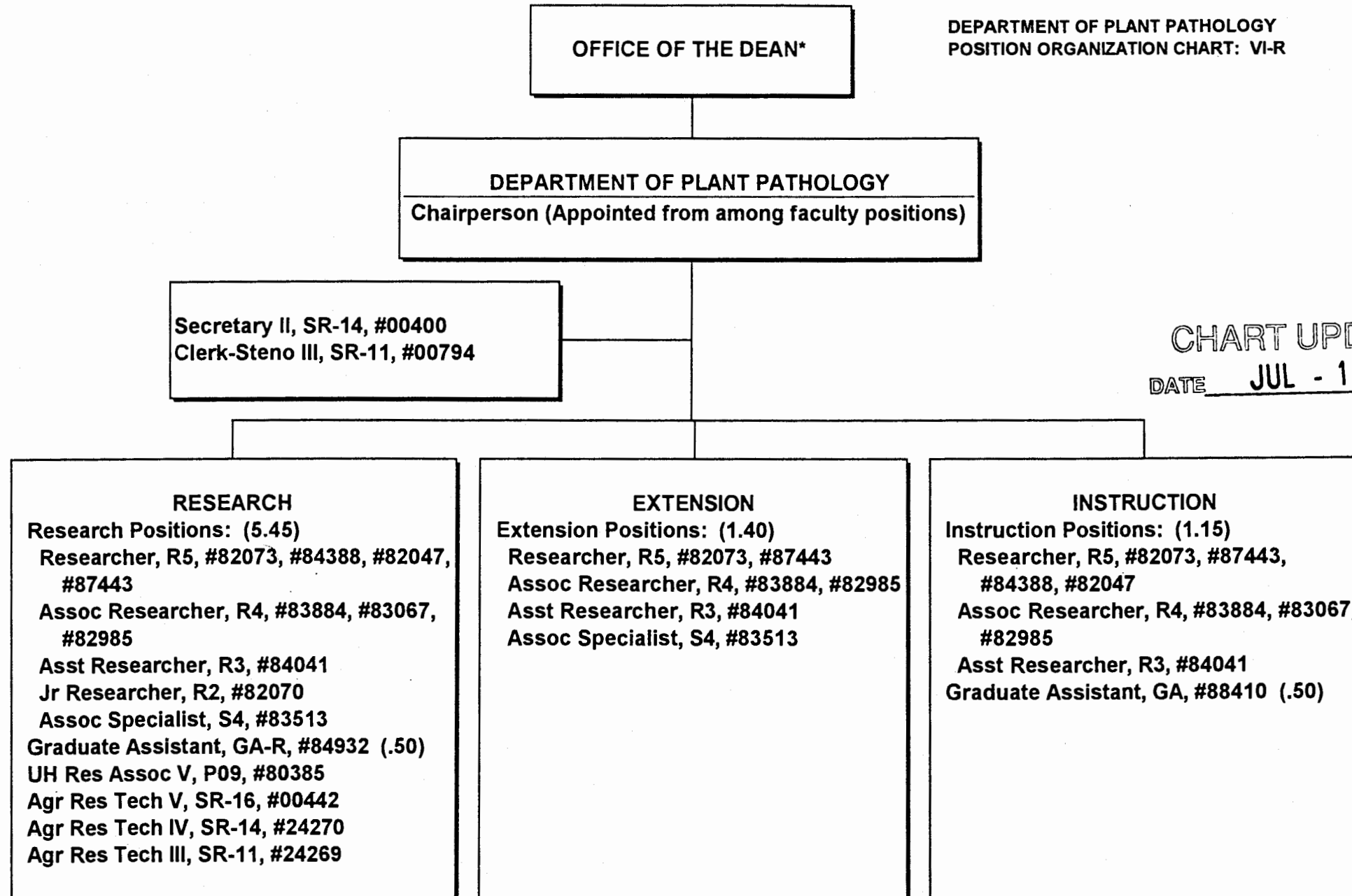


CHART UPDATED  
DATE JUL - 1 1998

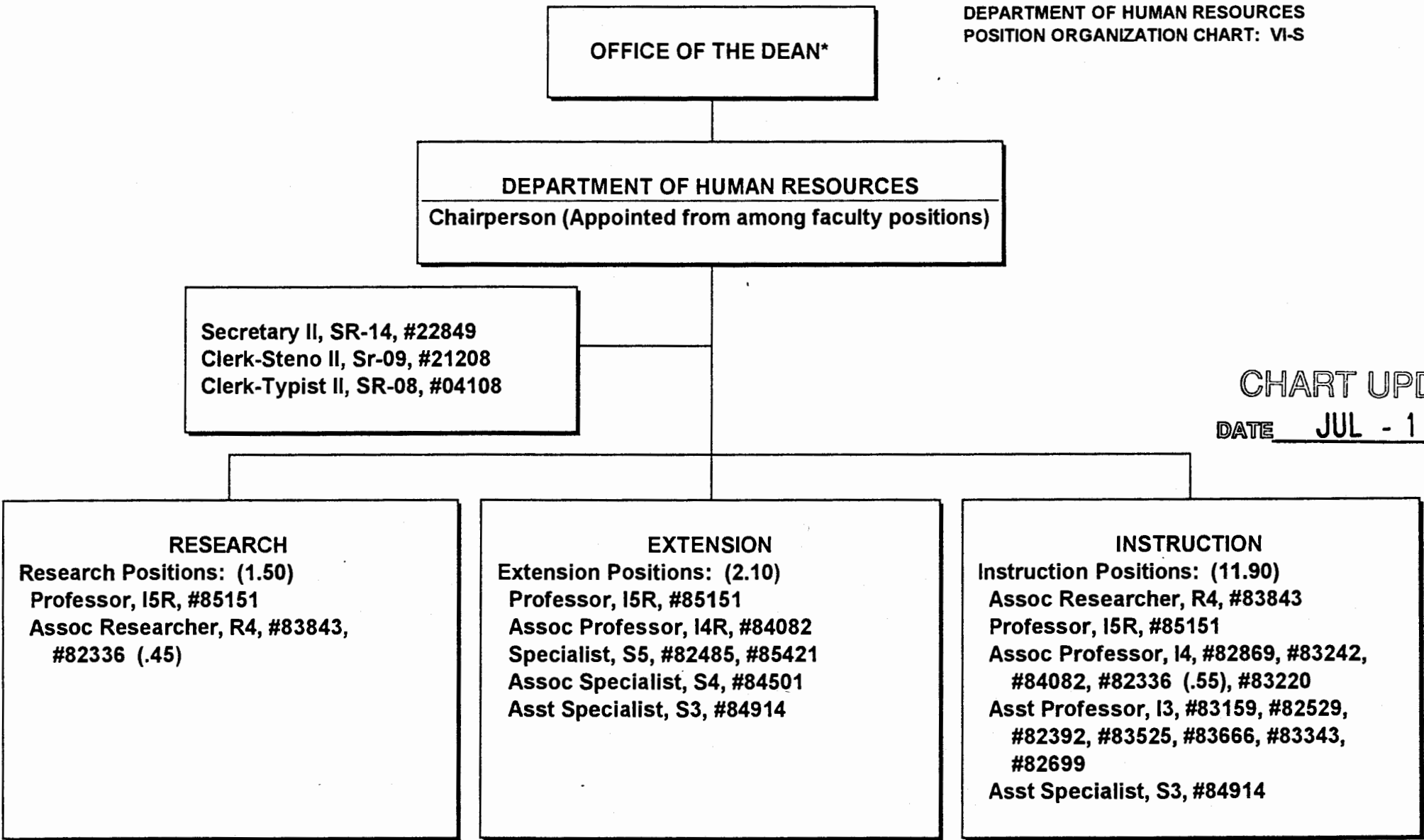
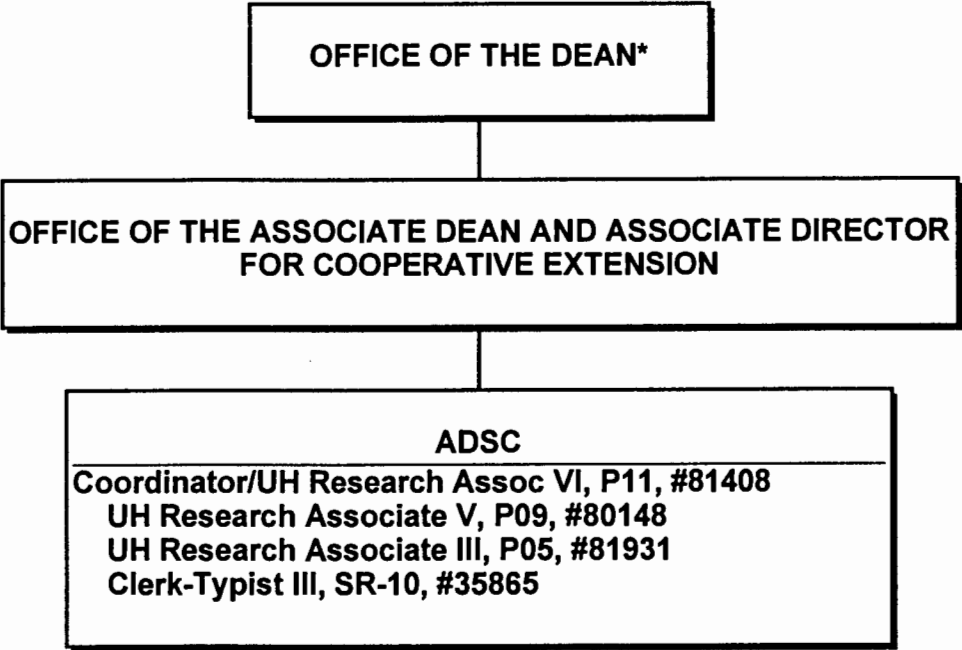


CHART UPDATED  
DATE JUL - 1 1998



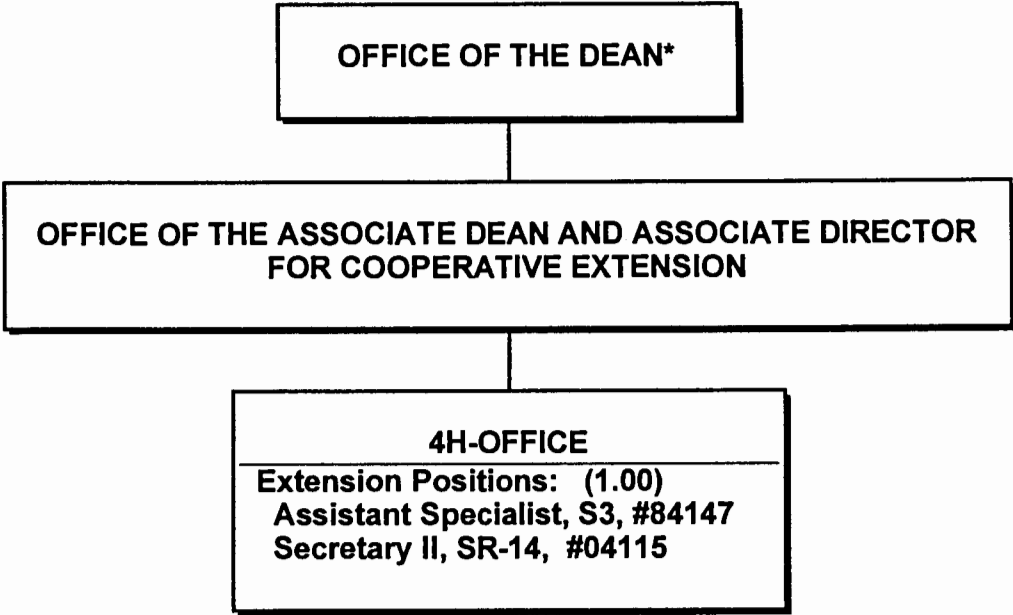
APPROVED PURSUANT TO BOR ACTION:

  
DEAN SMITH

SENIOR VICE PRESIDENT AND EXECUTIVE VICE CHANCELLOR UH MANOA

DATE: APR 23 1999

\*& Director of Research and Cooperative Extension



APPROVED PURSUANT TO BOR ACTION:

DEAN SMITH  
SENIOR VICE PRESIDENT AND EXECUTIVE VICE CHANCELLOR UH MANOA

DATE: APR 23 1999

\*& Director of Research and Cooperative Extension

STATE OF HAWAII  
UNIVERSITY OF HAWAII  
UNIVERSITY OF HAWAII AT MANOA  
COLLEGE OF TROPICAL AGRICULTURE AND HUMAN RESOURCES

HAWAII INSTITUTE OF TROPICAL AGRICULTURE  
AND HUMAN RESOURCES  
HAWAII COUNTY  
POSITION ORGANIZATION CHART: VI-Y

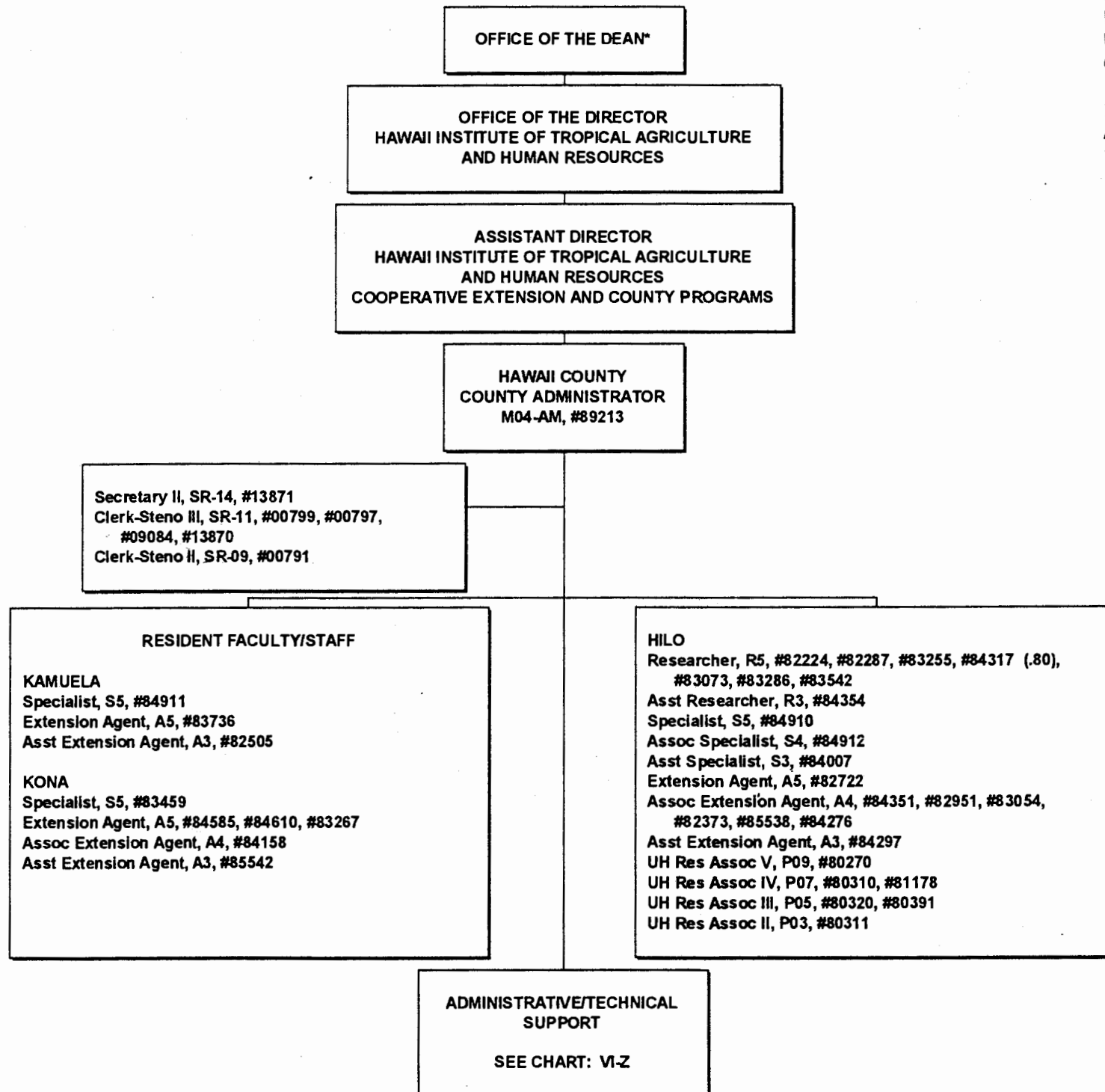
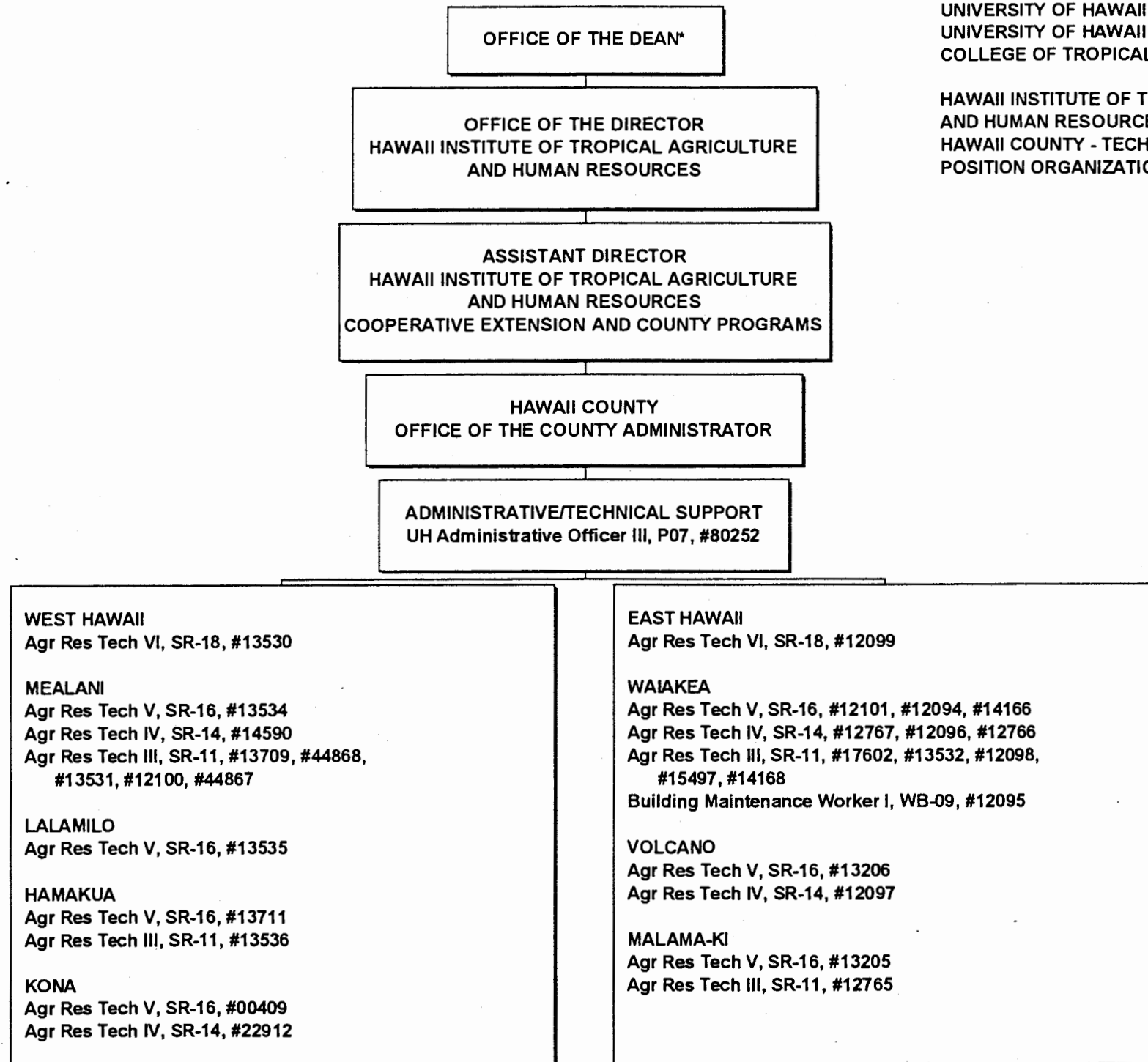


CHART UPDATED  
DATE JUL - 1 1998



STATE OF HAWAII  
UNIVERSITY OF HAWAII  
UNIVERSITY OF HAWAII AT MANOA  
COLLEGE OF TROPICAL AGRICULTURE AND HUMAN RESOURCES

HAWAII INSTITUTE OF TROPICAL AGRICULTURE  
AND HUMAN RESOURCES  
HAWAII COUNTY - TECHNICAL SUPPORT  
POSITION ORGANIZATION CHART: VI-Z

CHART UPDATED  
DATE JUL - 1 1998



STATE OF HAWAII  
UNIVERSITY OF HAWAII  
UNIVERSITY OF HAWAII AT MANOA  
COLLEGE OF TROPICAL AGRICULTURE AND HUMAN RESOURCES

HAWAII INSTITUTE OF TROPICAL AGRICULTURE  
AND HUMAN RESOURCES  
MAUI COUNTY  
POSITION ORGANIZATION CHART: VI-AA

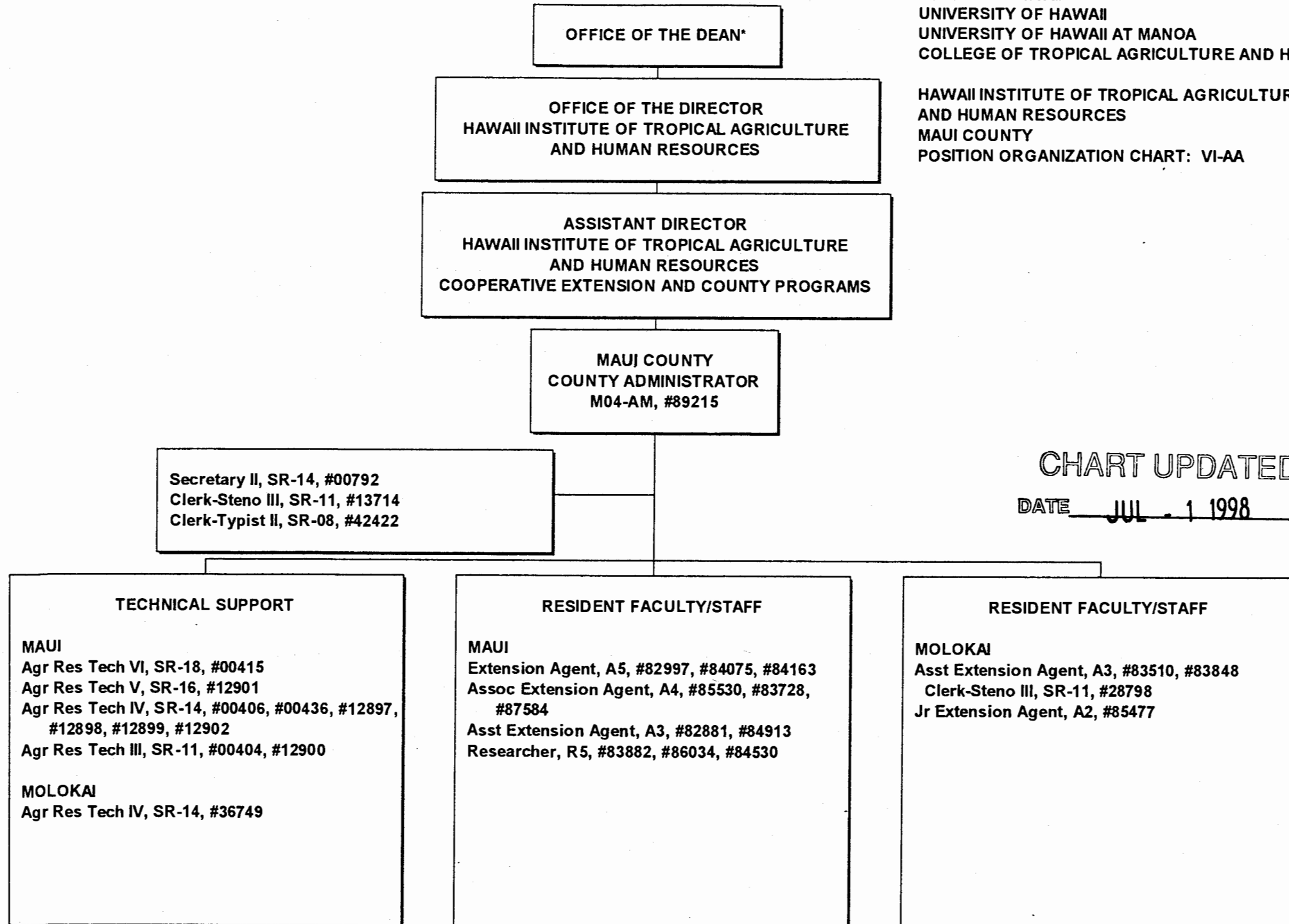
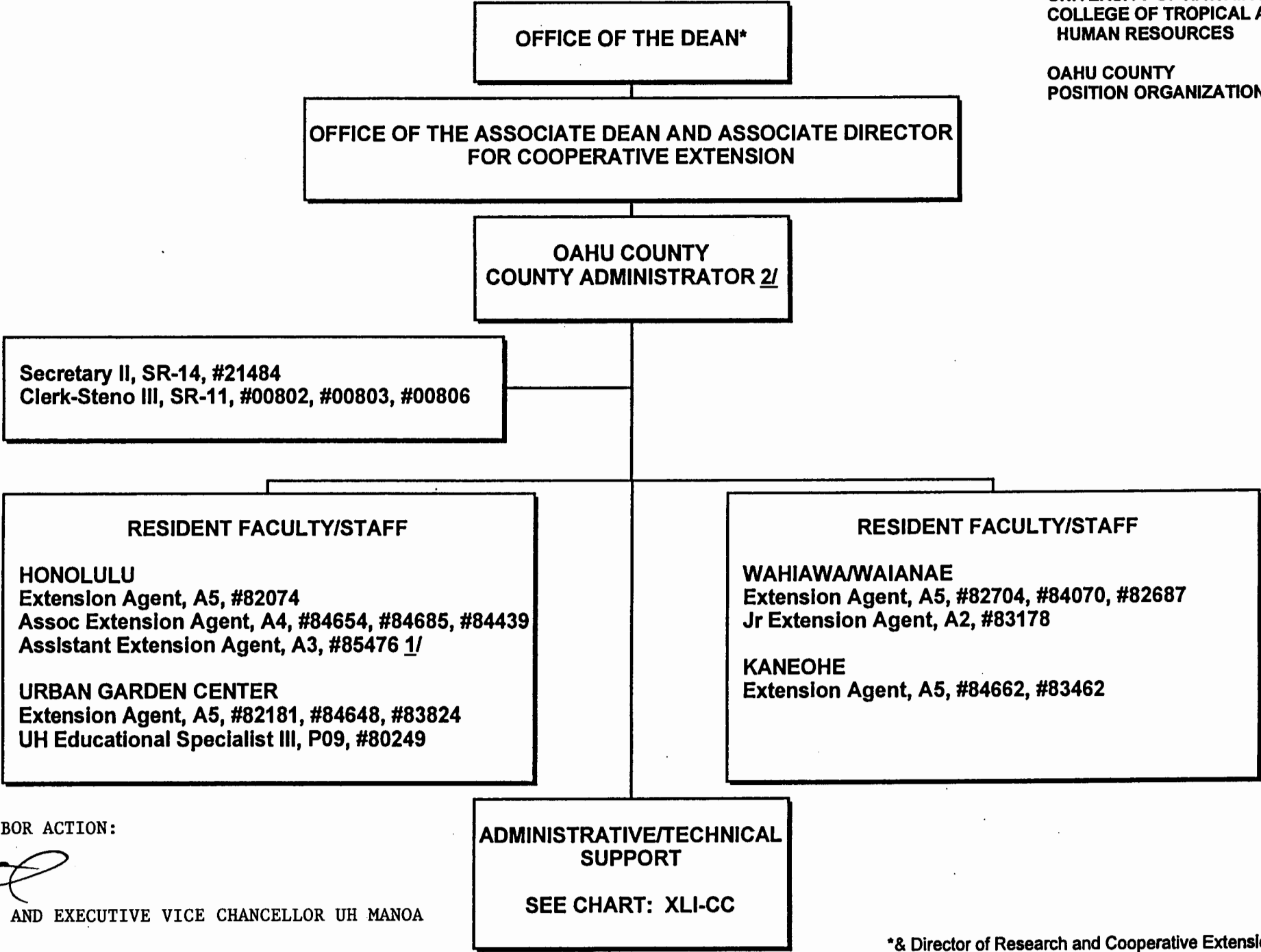
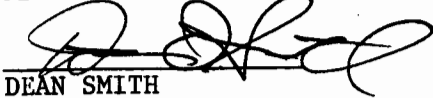


CHART UPDATED

DATE JUL - 1 1998



APPROVED PURSUANT TO BOR ACTION:

  
DEAN SMITH

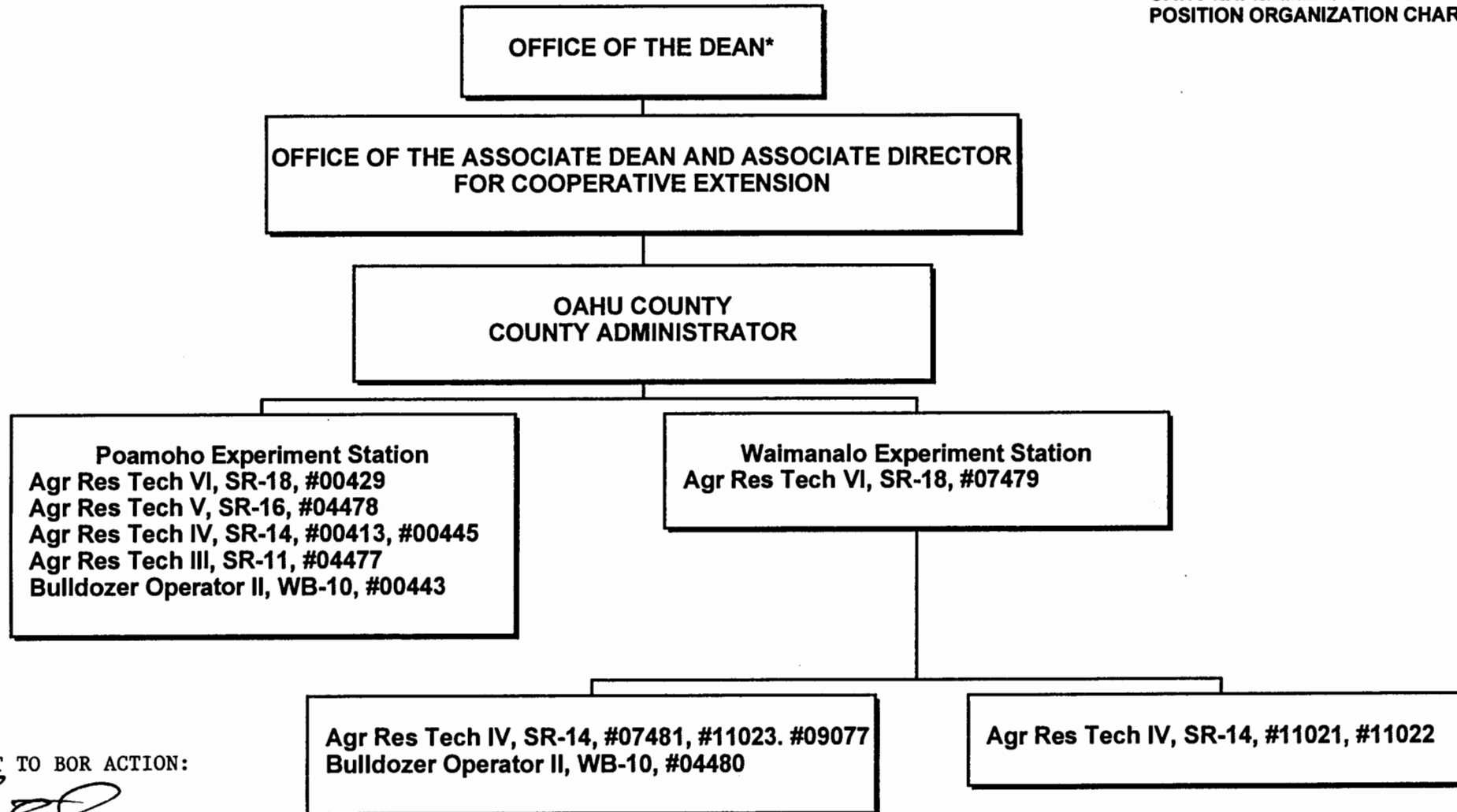
SENIOR VICE PRESIDENT AND EXECUTIVE VICE CHANCELLOR UH MANOA

DATE: APR 23 1999

\* & Director of Research and Cooperative Extension  
1/ Position to be redescribed.  
2/ County administered temporarily by Kauai County Administrator

STATE OF HAWAII  
UNIVERSITY OF HAWAII  
UNIVERSITY OF HAWAII AT MANOA  
COLLEGE OF TROPICAL AGRICULTURE AND  
HUMAN RESOURCES

OAHU EXPERIMENT STATION  
POSITION ORGANIZATION CHART: XLI-CC



APPROVED PURSUANT TO BOR ACTION:

  
DEAN SMITH

SENIOR VICE PRESIDENT AND EXECUTIVE VICE CHANCELLOR UH MANOA

DATE: APR 23 1999

\* & Director of Research and Cooperative Extension

STATE OF HAWAII  
UNIVERSITY OF HAWAII  
UNIVERSITY OF HAWAII AT MANOA  
COLLEGE OF TROPICAL AGRICULTURE AND HUMAN RESOURCES

HAWAII INSTITUTE OF TROPICAL AGRICULTURE  
AND HUMAN RESOURCES  
KAUAI COUNTY  
POSITION ORGANIZATION CHART: VI-DD

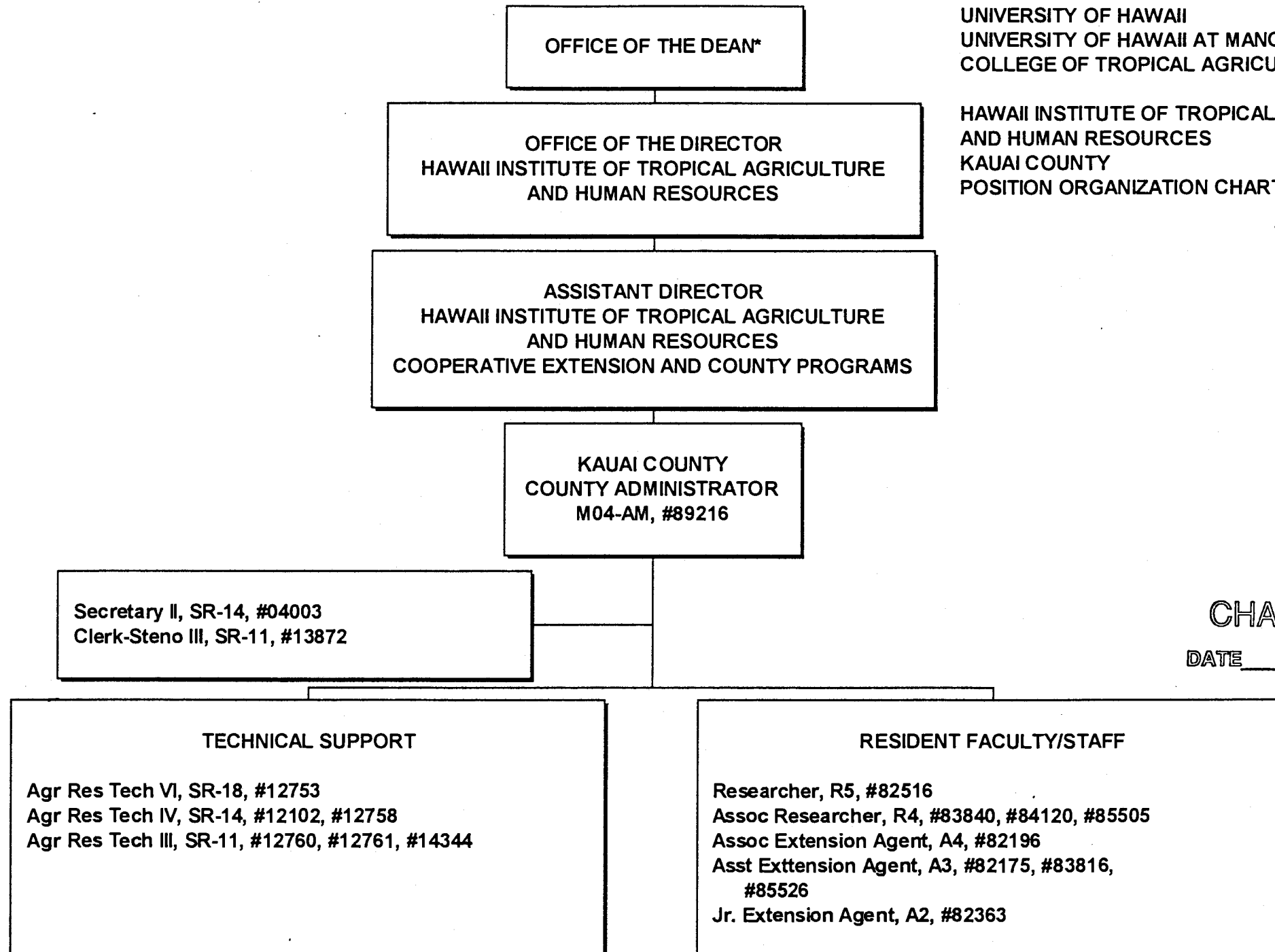
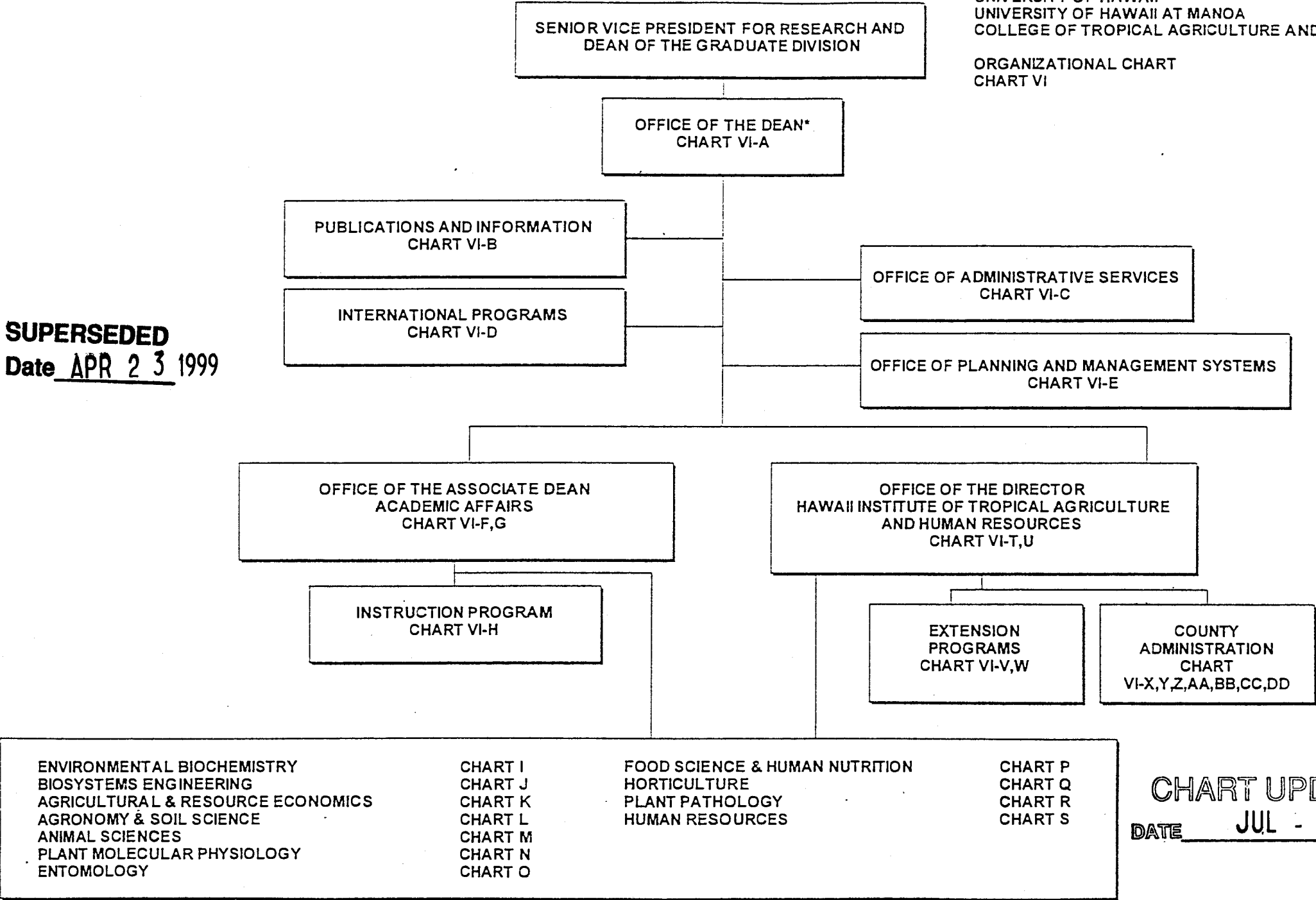


CHART UPDATED  
DATE JUL - 1 1998

\* & Director of Cooperative Science & Education

**SUPERSEDED**  
Date APR 23 1999



**CHART UPDATED**  
DATE JUL - 1 1998

\*& Director of Cooperative Science & Education

STATE OF HAWAII  
UNIVERSITY OF HAWAII  
UNIVERSITY OF HAWAII AT MANOA  
COLLEGE OF TROPICAL AGRICULTURE AND HUMAN RESOURCES

OFFICE OF THE DEAN  
POSITION ORGANIZATION CHART: VI-A

Senior Vice President  
for Research and  
Dean of the Graduate Division

OFFICE OF THE DEAN\*

DEAN\*, M12-A, #89020  
Secretary IV, SR-18, #05873  
Public Relations Specialist, M03, #89279

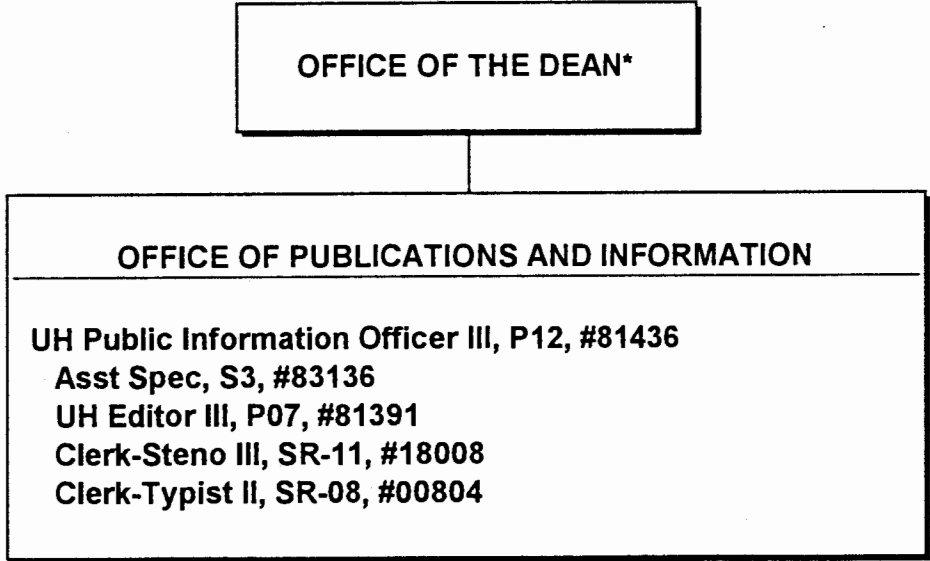
**SUPERSEDED**  
Date APR 23 1999

CHART UPDATED  
DATE JUL - 1 1998

\* & Director of Cooperative Science & Education

STATE OF HAWAII  
UNIVERSITY OF HAWAII  
UNIVERSITY OF HAWAII AT MANOA  
COLLEGE OF TROPICAL AGRICULTURE AND HUMAN RESOURCES

OFFICE OF PUBLICATIONS AND INFORMATION  
POSITION ORGANIZATION CHART: VI-B



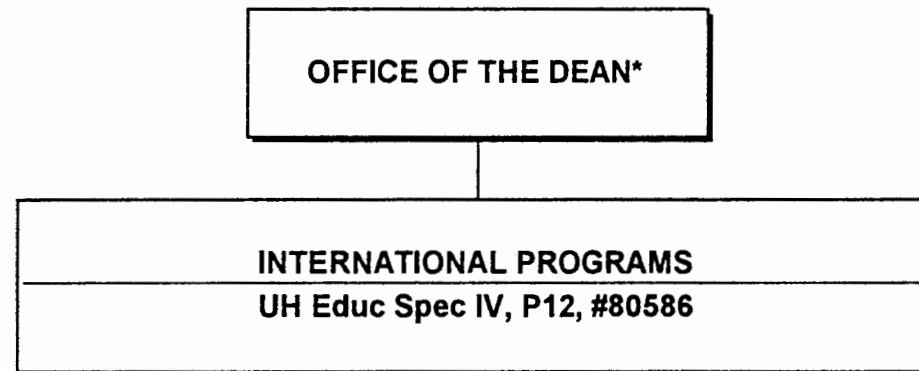
**SUPERSEDED**  
**Date** APR 23 1999

**CHART UPDATED**  
**DATE** JUL - 1 1998

\* & Director of Cooperative Science & Education

STATE OF HAWAII  
UNIVERSITY OF HAWAII  
UNIVERSITY OF HAWAII AT MANOA  
COLLEGE OF TROPICAL AGRICULTURE AND HUMAN RESOURCES

OFFICE OF INTERNATIONAL PROGRAMS  
POSITION ORGANIZATION CHART: VI-D



**SUPERSEDED**  
Date APR 23 1999

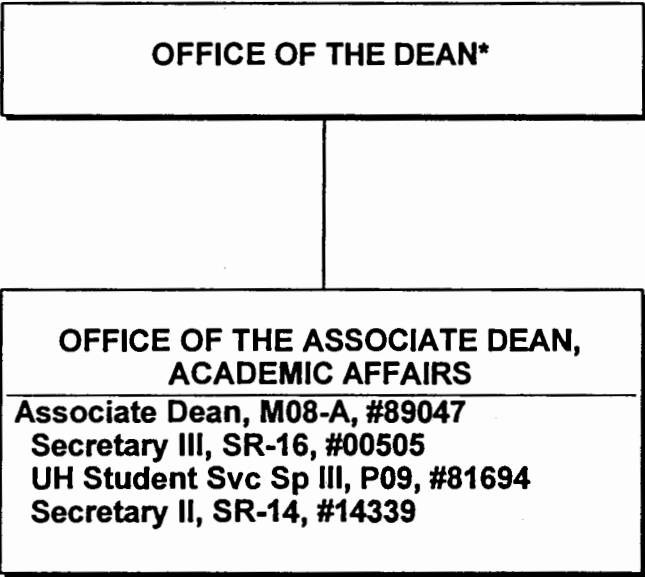
**CHART UPDATED**  
DATE JUL - 1 1998

\* & Director of Research Cooperative Extension



STATE OF HAWAII  
UNIVERSITY OF HAWAII  
UNIVERSITY OF HAWAII AT MANOA  
COLLEGE OF TROPICAL AGRICULTURE AND HUMAN RESOURCES

OFFICE OF THE ASSOCIATE DEAN, ACADEMIC AFFAIRS  
POSITION ORGANIZATION CHART: VI-F



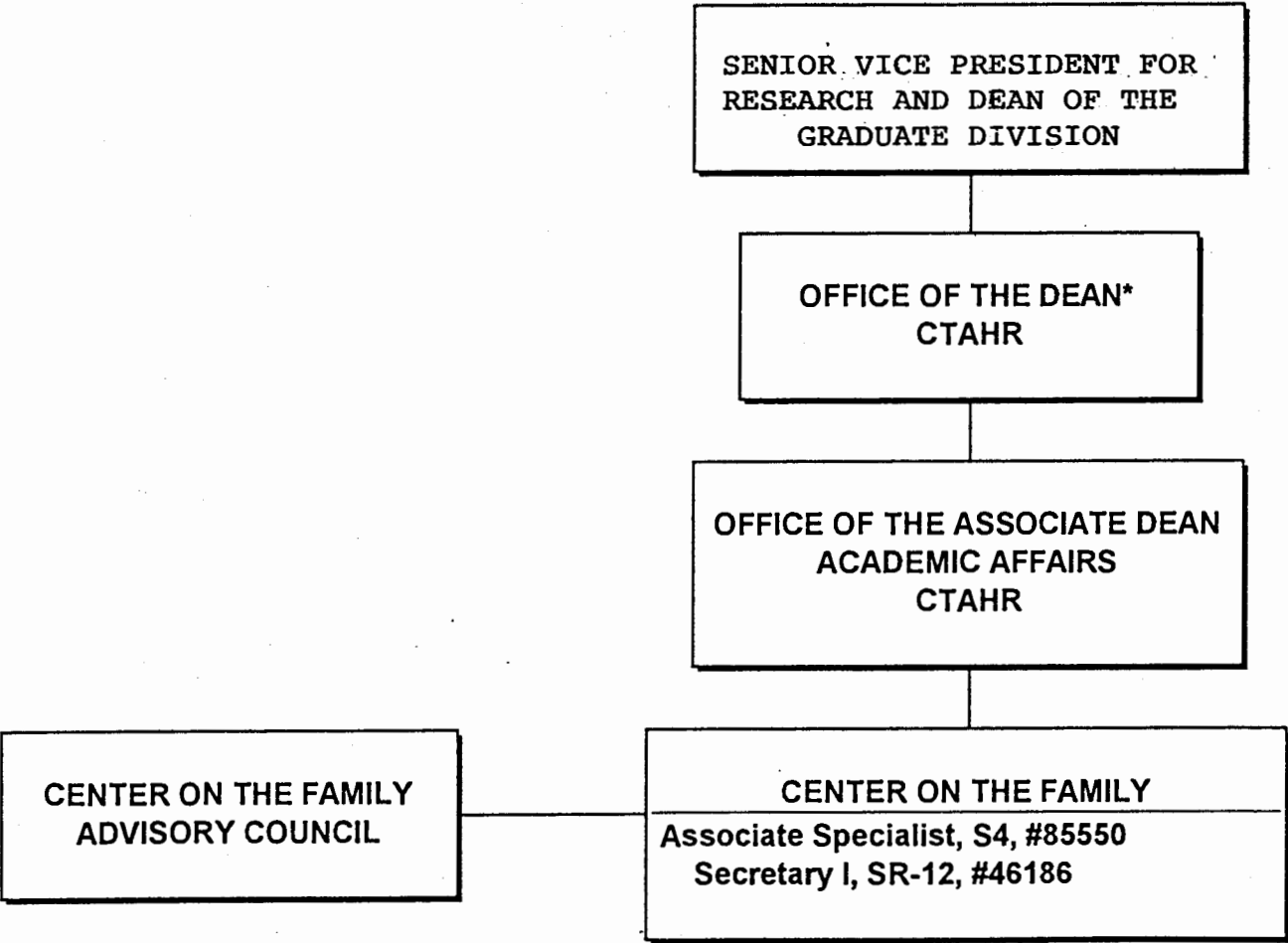
**SUPERSEDED**  
**Date** APR 23 1999

**CHART UPDATED**  
**DATE** JUL - 1 1998

\* & Director of Cooperative Science & Education

STATE OF HAWAII  
UNIVERSITY OF HAWAII  
UNIVERSITY OF HAWAII AT MANOA  
COLLEGE OF TROPICAL AGRICULTURE AND RESOURCE MANAGEMENT

CENTER ON THE FAMILY  
POSITION ORGANIZATION CHART: VI-G



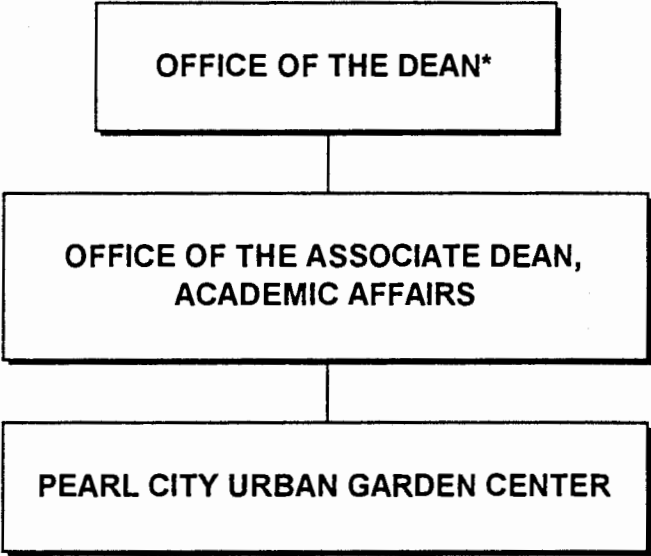
**SUPERSEDED**  
**Date** APR 23 1999

**CHART UPDATED**  
**DATE** JUL - 1 1998

\* & Director of Cooperative Science & Education

STATE OF HAWAII  
UNIVERSITY OF HAWAII  
UNIVERSITY OF HAWAII AT MANOA  
COLLEGE OF TROPICAL AGRICULTURE AND HUMAN RESOURCES

PEARL CITY URBAN GARDEN CENTER  
POSITION ORGANIZATION CHART: VI-H



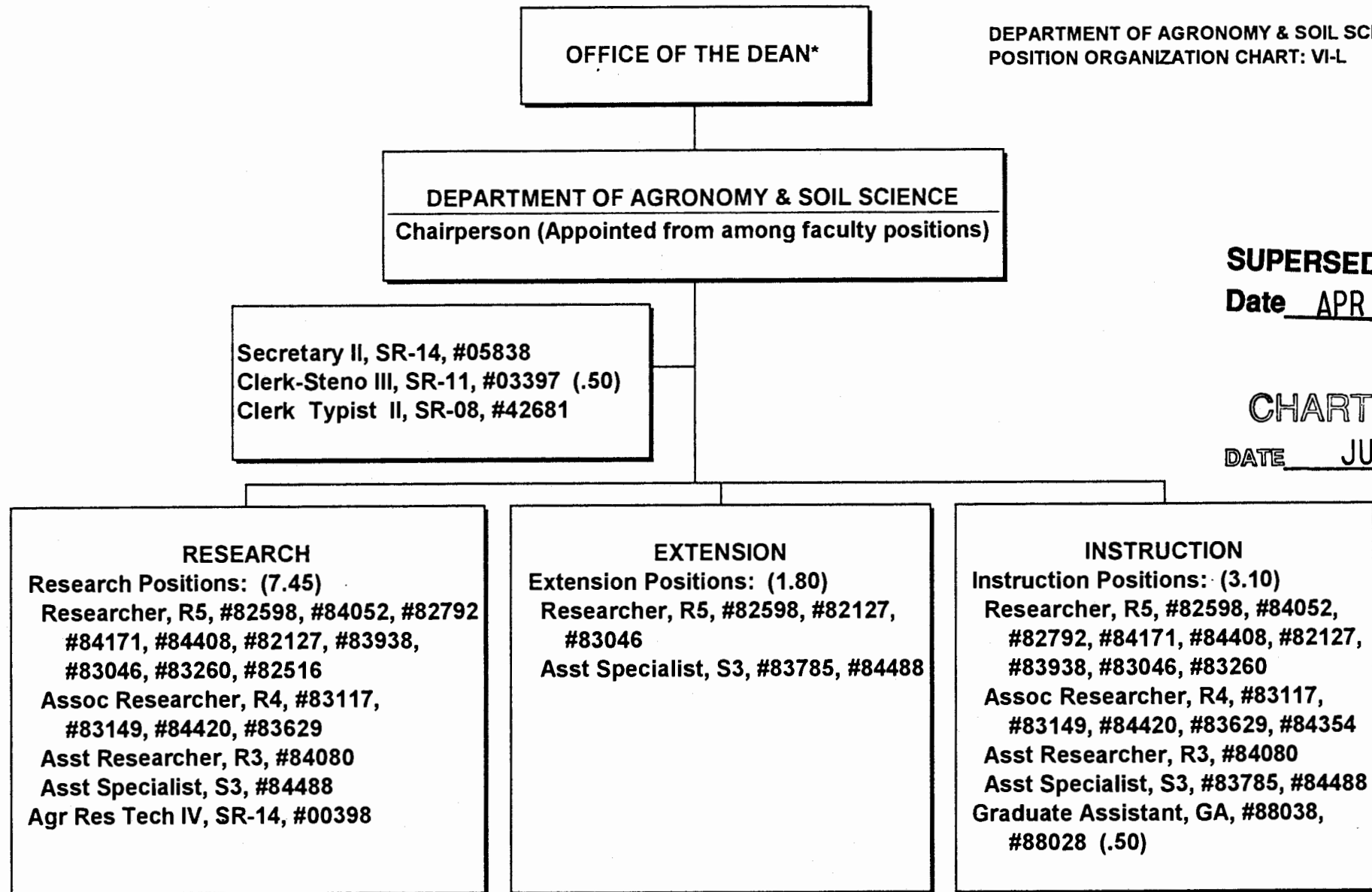
**SUPERSEDED**  
Date APR 23 1999

CHART UPDATED  
DATE JUL - 1 1998

\*& Director of Cooperative Science & Education

STATE OF HAWAII  
UNIVERSITY OF HAWAII  
UNIVERSITY OF HAWAII AT MANOA  
COLLEGE OF TROPICAL AGRICULTURE AND HUMAN RESOURCES

DEPARTMENT OF AGRONOMY & SOIL SCIENCE  
POSITION ORGANIZATION CHART: VI-L



**SUPERSEDED**  
Date APR 23 1999

**CHART UPDATED**  
DATE JUL - 1 1998

STATE OF HAWAII  
UNIVERSITY OF HAWAII  
UNIVERSITY OF HAWAII AT MANOA  
COLLEGE OF TROPICAL AGRICULTURE AND HUMAN RESOURCES

OFFICE OF THE DIRECTOR, HITAHR  
POSITION ORGANIZATION CHART: VI-T

OFFICE OF THE DEAN\*

OFFICE OF THE DIRECTOR  
HAWAII INSTITUTE OF TROPICAL AGRICULTURE & HUMAN RESOURCES

Director, HITAHR, M11-A, #89124  
Secretary III, SR-16, #00425  
Clerk-Steno III, SR-11, #03397 (.50)  
Clerk-Typist II, SR-08, #42680  
Asst Dir, HITAHR, (Agriculture & Applied Behavioral Sciences  
Research), M05-A, #89186  
Secretary II, SR-14, #22831  
Asst Dir, HITAHR, (Agriculture & Resource Development),  
M05-A, #89017  
Secretary II, SR-14, #22932  
Asst Dir, HITAHR, (Cooperative Extension & County Programs),  
M05-A, #89069  
Asst Extension Agent, A-3, #85476  
Clerk-Typist II, SR-08, #17592  
Secretary II, SR-14, #00789

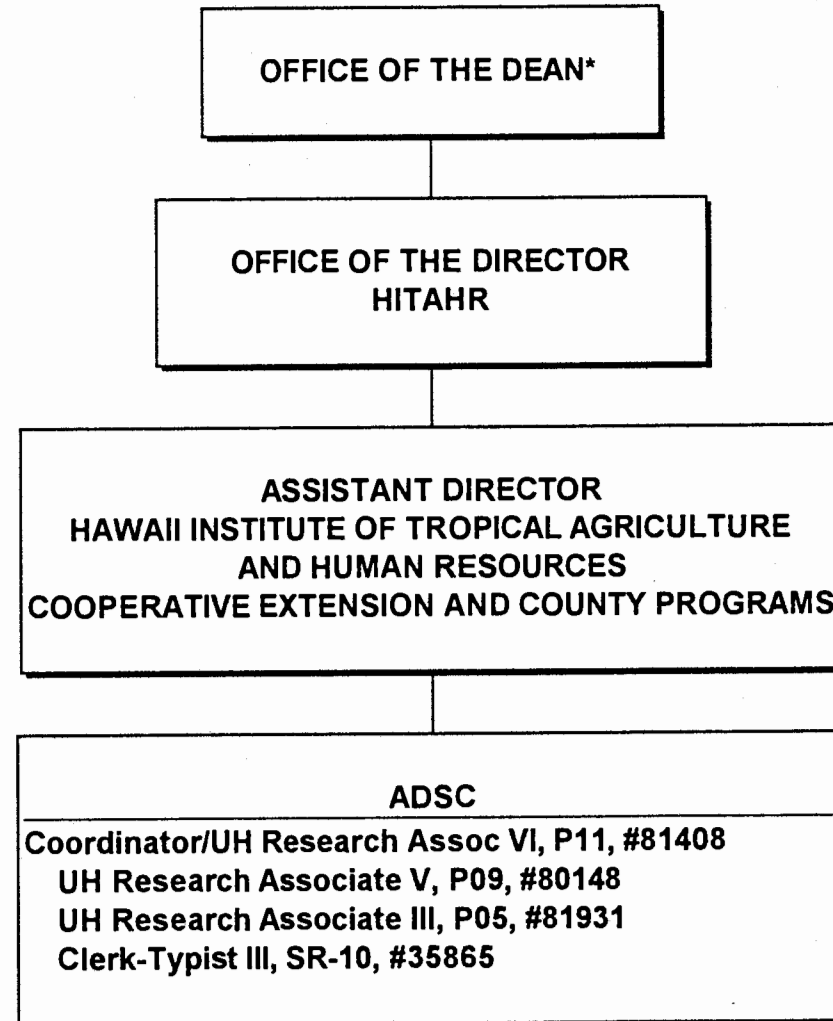
**SUPERSEDED**  
Date APR 23 1999

CHART UPDATED  
DATE JUL - 1 1998

\* & Director of Cooperative Science & Education

STATE OF HAWAII  
UNIVERSITY OF HAWAII  
UNIVERSITY OF HAWAII AT MANOA  
COLLEGE OF TROPICAL AGRICULTURE AND HUMAN RESOURCES

AGRICULTURAL DIAGNOSTIC SERVICE CENTER  
POSITION ORGANIZATION CHART: VI-U



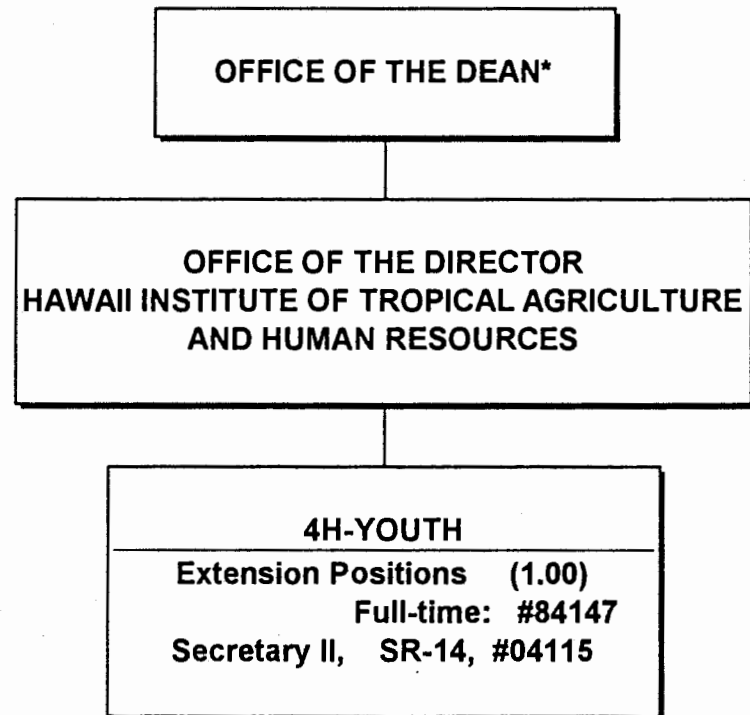
**SUPERSEDED**  
Date APR 23 1999

CHART UPDATED  
DATE JUL - 1 1998

\* & Director of Cooperative Science & Education

STATE OF HAWAII  
UNIVERSITY OF HAWAII  
UNIVERSITY OF HAWAII AT MANOA  
COLLEGE OF TROPICAL AGRICULTURE AND HUMAN RESOURCES

4-H OFFICE  
POSITION ORGANIZATION CHART: VI-V



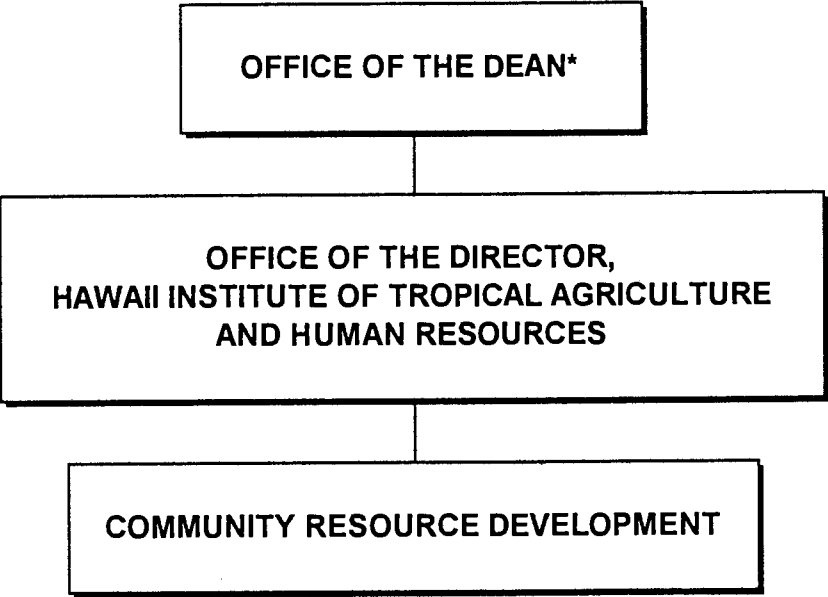
**SUPERSEDED**  
**Date** APR 23 1999

**CHART UPDATED**  
**DATE** JUL - 1 1998

\* & Director of Cooperative Science & Education

STATE OF HAWAII  
UNIVERSITY OF HAWAII  
UNIVERSITY OF HAWAII AT MANOA  
COLLEGE OF TROPICAL AGRICULTURE AND HUMAN RESOURCES

COMMUNITY RESOURCE DEVELOPMENT  
POSITION ORGANIZATION CHART: VI-W



**SUPERSEDED**  
Date APR 23 1999

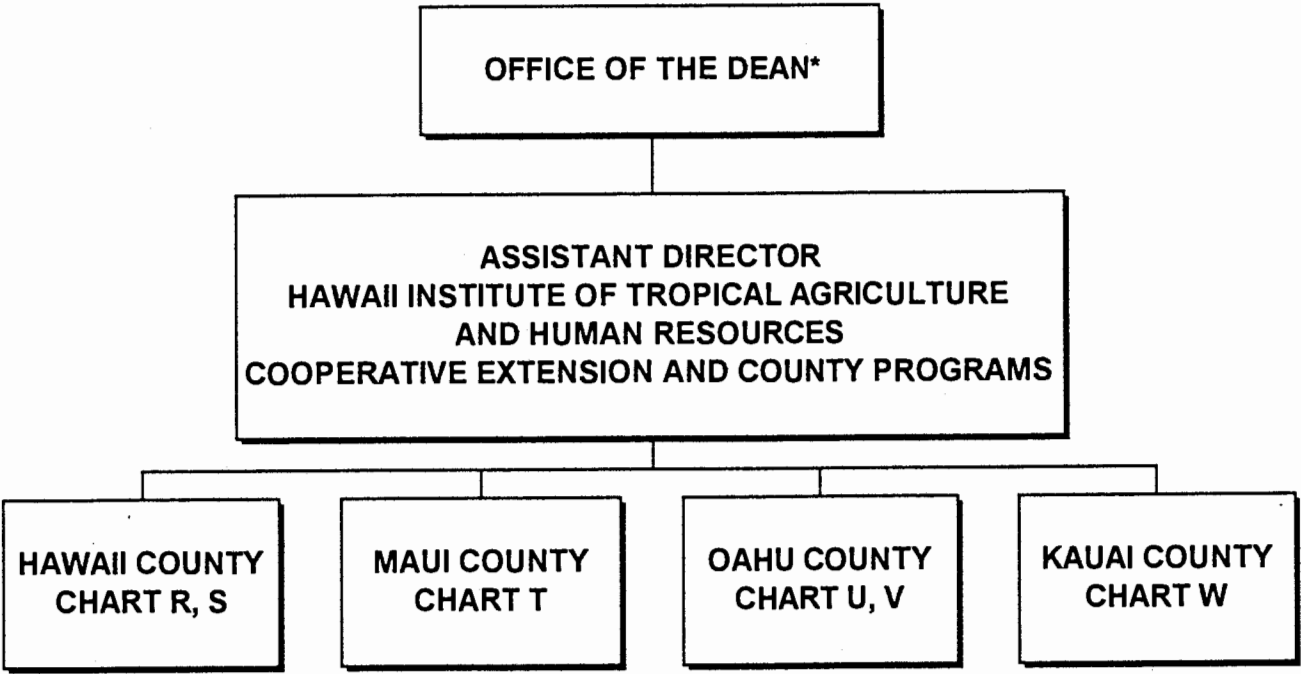
CHART UPDATED  
DATE JUL - 1 1998

\*& Director of Cooperative Science & Education



STATE OF HAWAII  
UNIVERSITY OF HAWAII  
UNIVERSITY OF HAWAII AT MANOA  
COLLEGE OF TROPICAL AGRICULTURE AND HUMAN RESOURCES

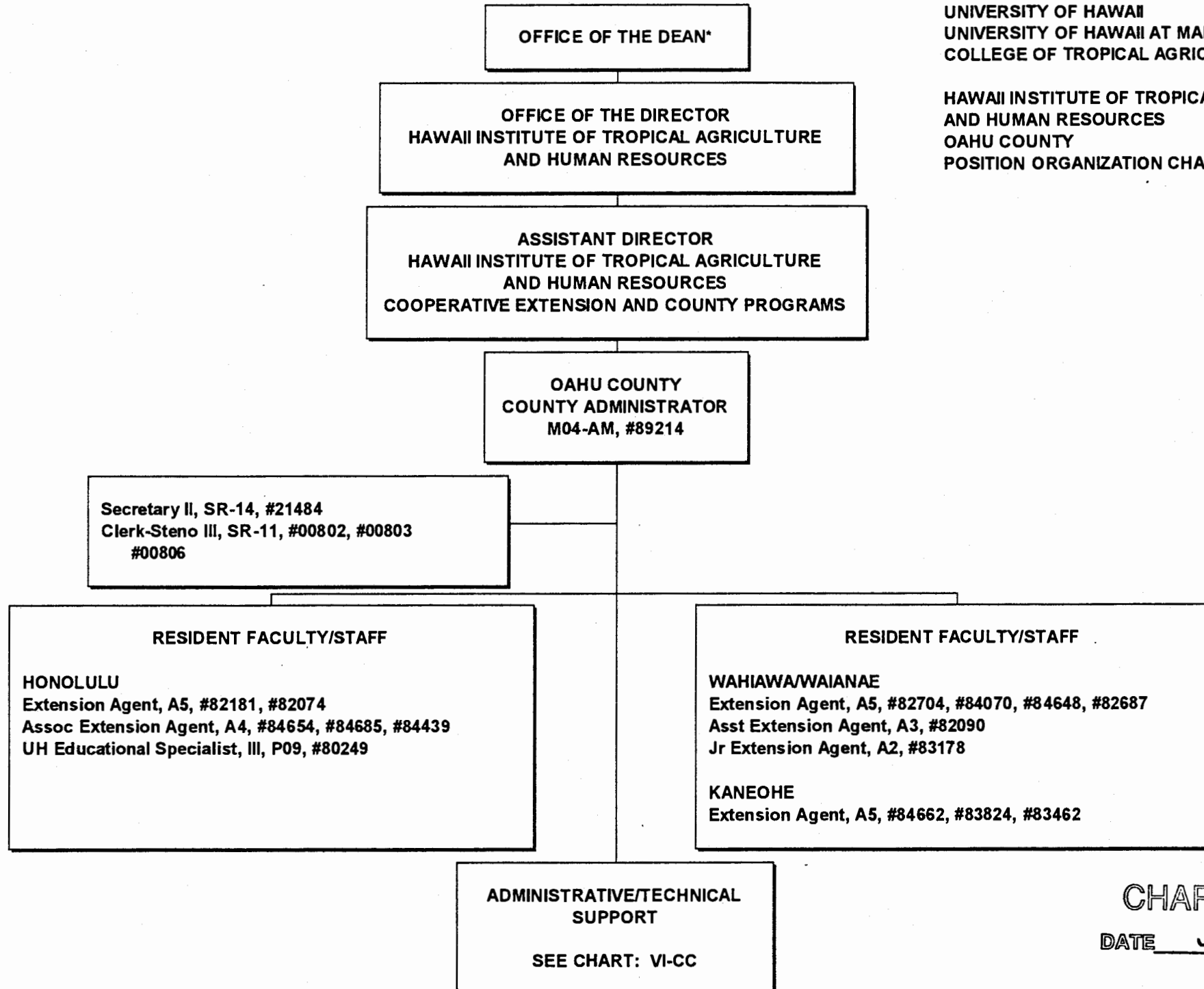
HAWAII INSTITUTE OF TROPICAL AGRICULTURE & HUMAN RESOURCES  
COUNTY ADMINISTRATION  
POSITION ORGANIZATION CHART: VI-X



**SUPERSEDED**  
Date APR 23 1999

CHART UPDATED  
DATE JUL - 1 1998

\* & Director of Cooperative Science & Education



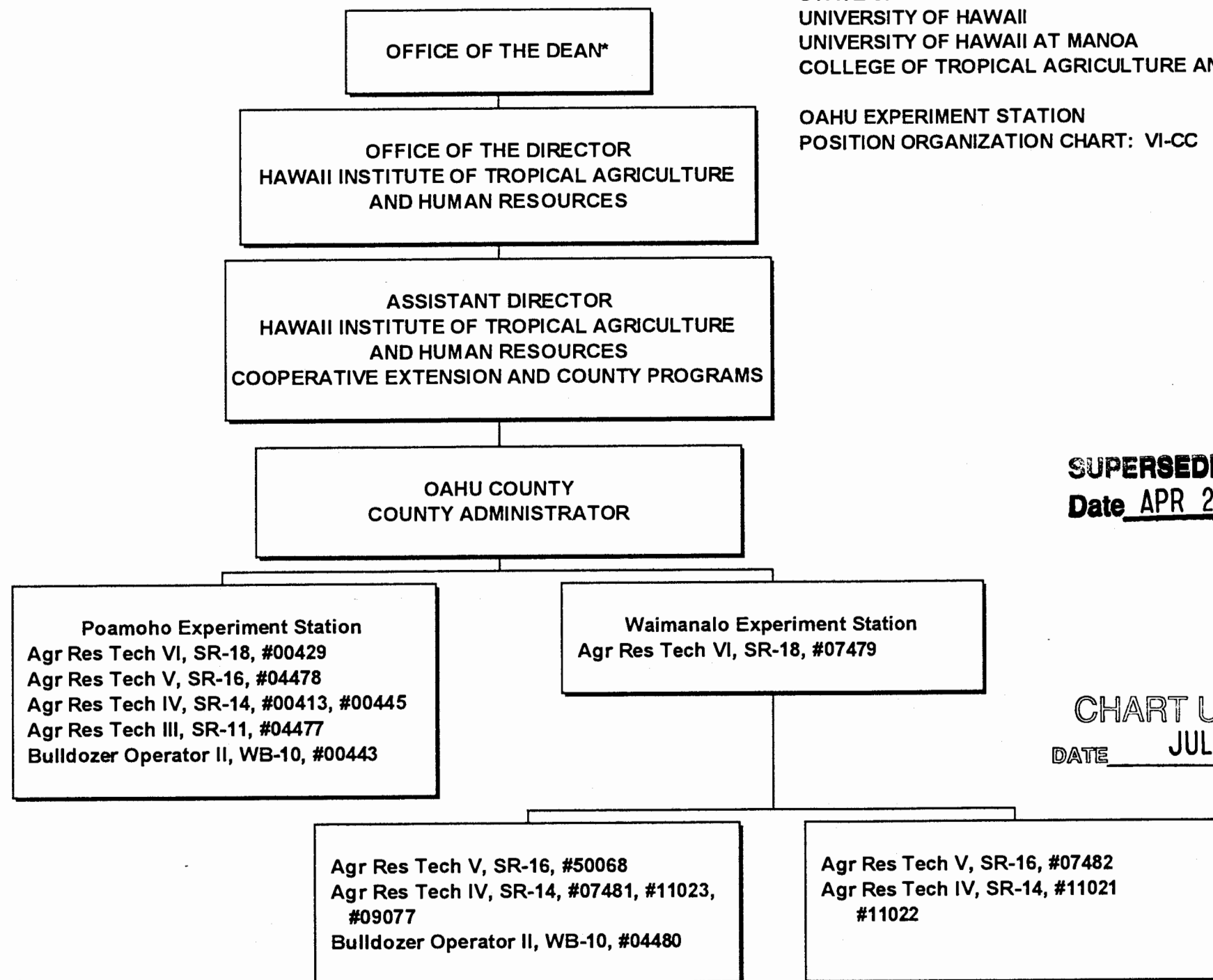
STATE OF HAWAII  
UNIVERSITY OF HAWAII  
UNIVERSITY OF HAWAII AT MANOA  
COLLEGE OF TROPICAL AGRICULTURE AND HUMAN RESOURCES

HAWAII INSTITUTE OF TROPICAL AGRICULTURE  
AND HUMAN RESOURCES  
OAHU COUNTY  
POSITION ORGANIZATION CHART: VI-BB

**SUPERSEDED**  
Date APR 23 1999

**CHART UPDATED**  
DATE JUL - 1 1998

\* & Director of Cooperative Science & Education



STATE OF HAWAII  
UNIVERSITY OF HAWAII  
UNIVERSITY OF HAWAII AT MANOA  
COLLEGE OF TROPICAL AGRICULTURE AND HUMAN RESOURCES

OAHU EXPERIMENT STATION  
POSITION ORGANIZATION CHART: VI-CC

**SUPERSEDED**  
Date APR 23 1999

CHART UPDATED  
DATE JUL - 1 1998

\* & Director of Cooperative Science & Education