

State of Hawai'i
University of Hawai'i
University of Hawai'i - West O'ahu

Position Organization Chart

Chart I

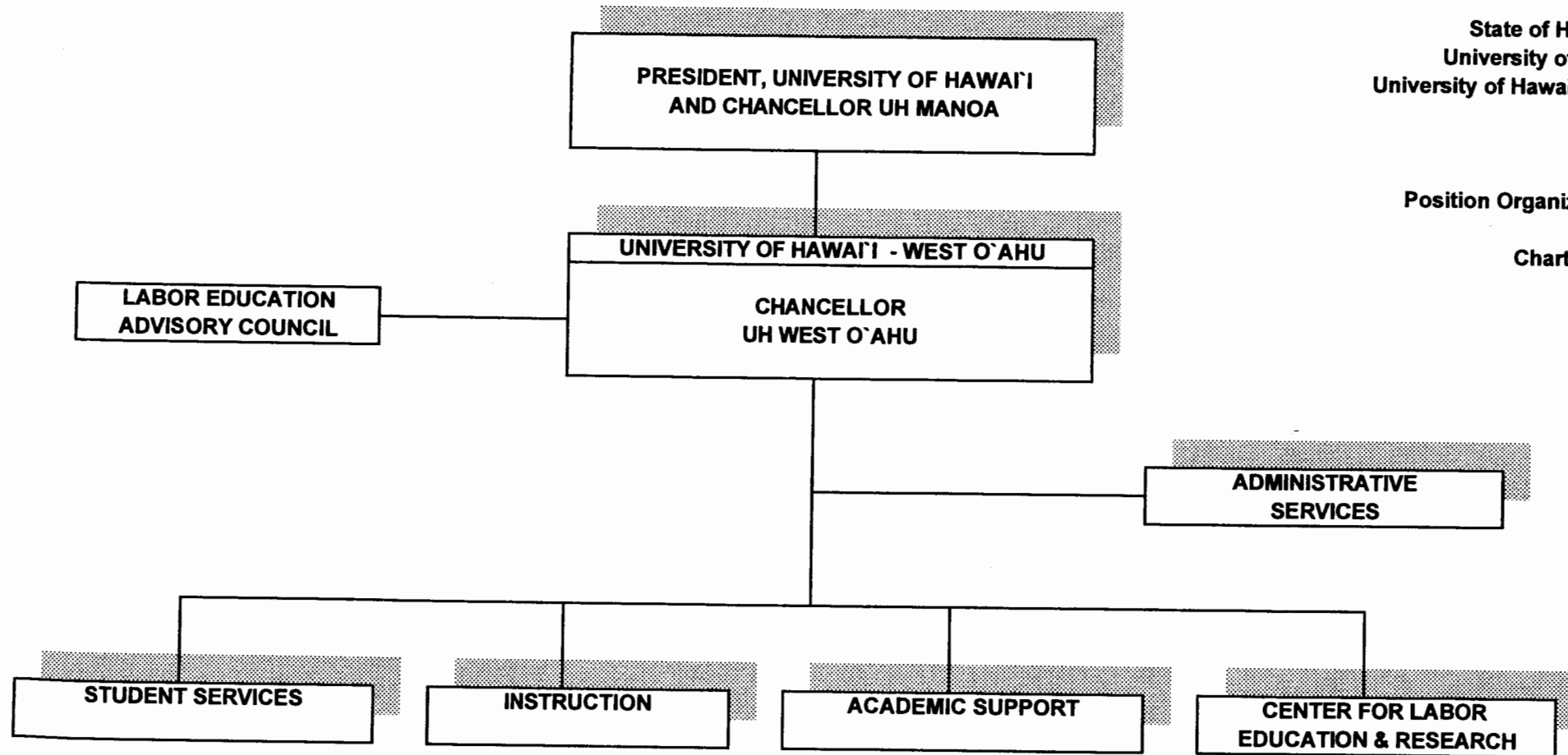


CHART UPDATED
JUL - 1 1998
DATE _____

State of Hawai'i
University of Hawai'i
University of Hawai'i - West O`ahu
Office of the Chancellor

Position Organization Chart

Chart II

General Funds 2.00

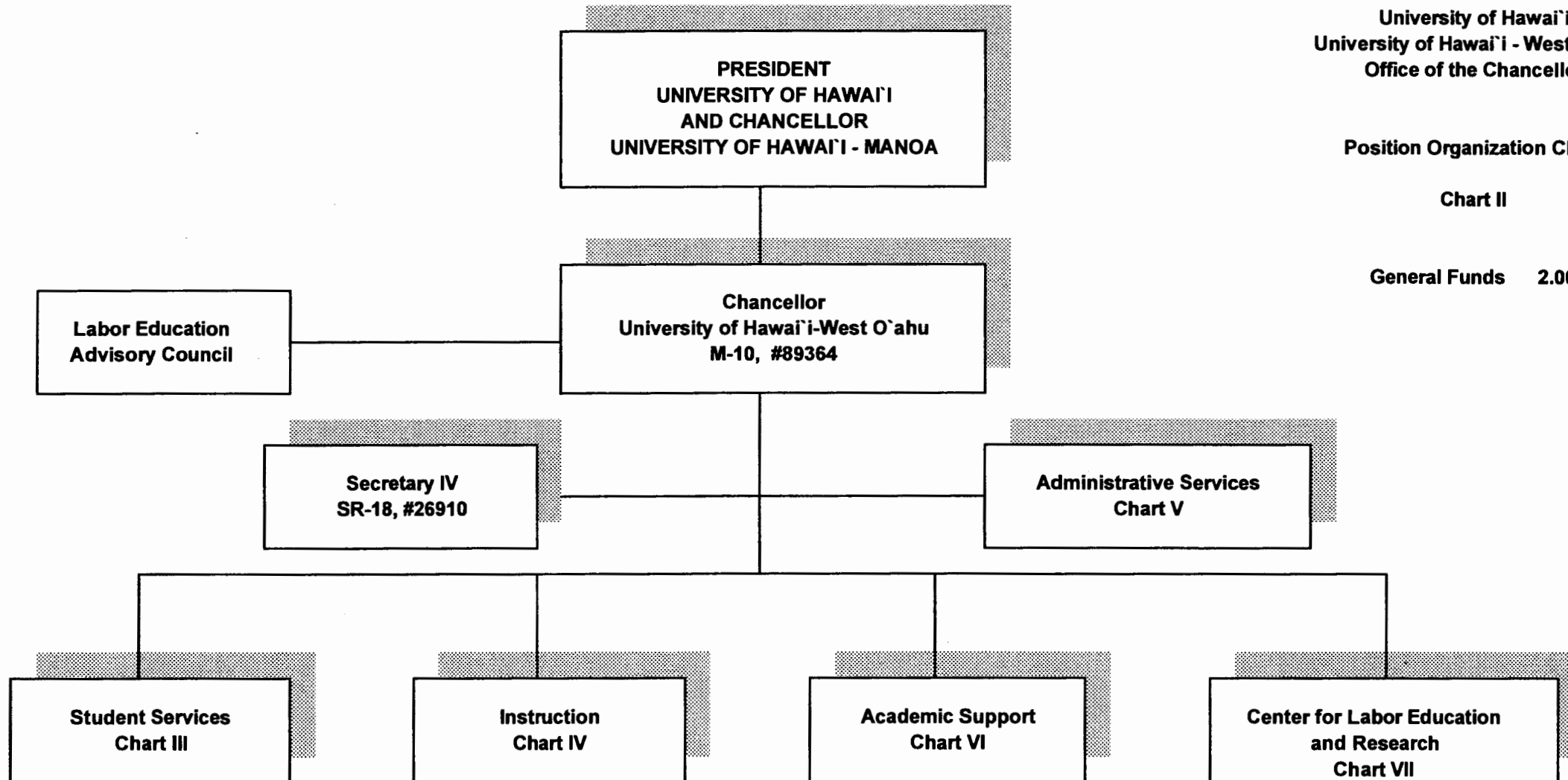


CHART UPDATED
DATE JUL - 1 1998

State of Hawai'i
University of Hawai'i
University of Hawai'i - West O'ahu
Student Services

Position Organization Chart

Chart III

General Funds 7.00

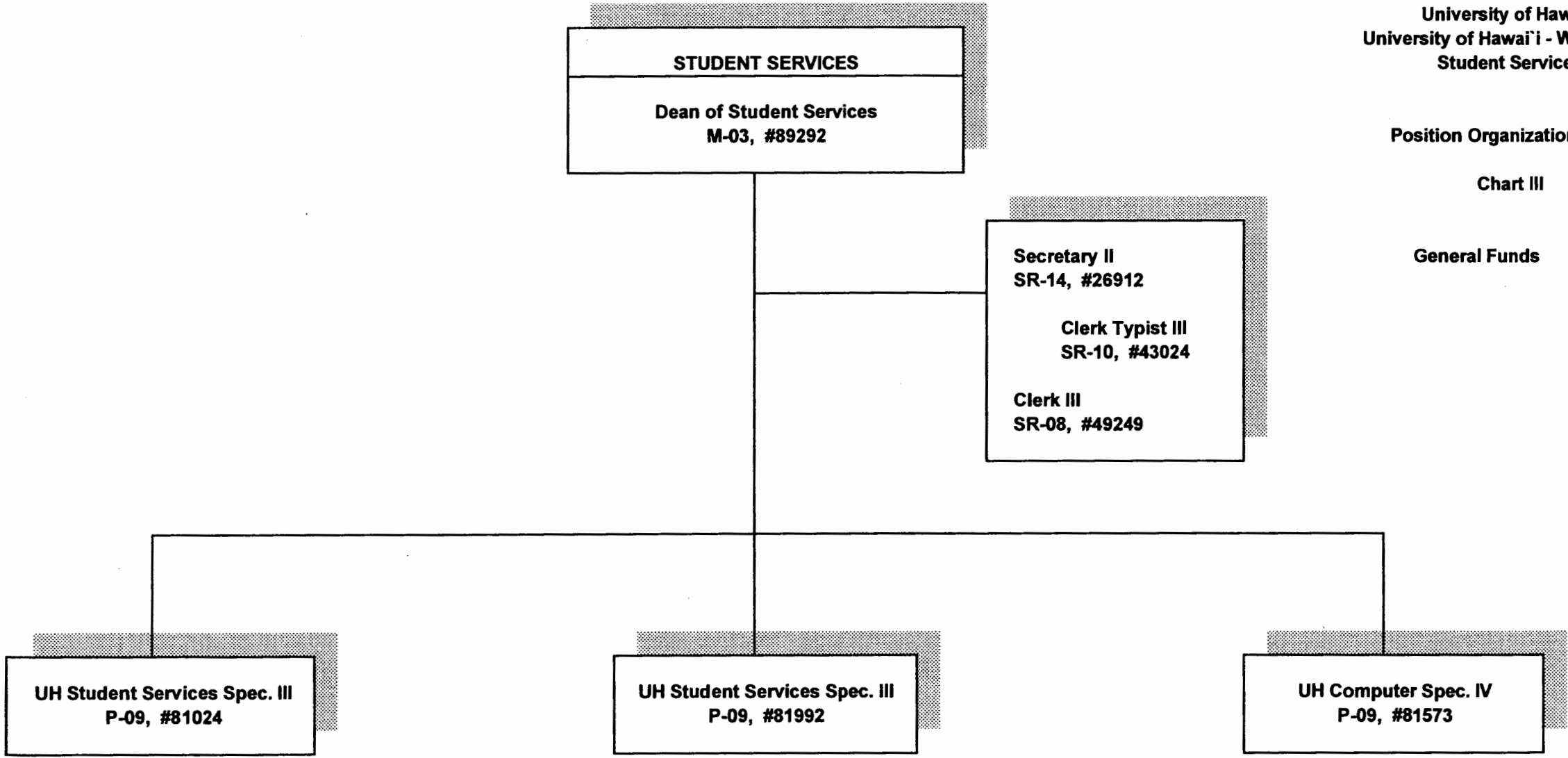


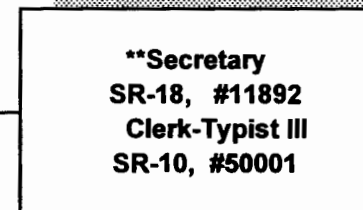
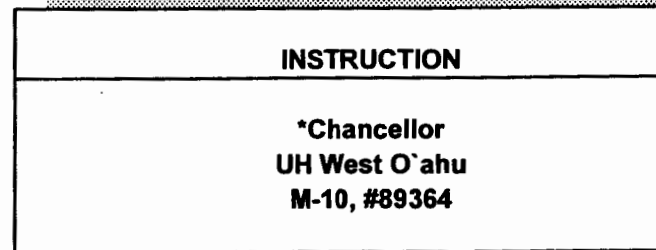
CHART UPDATED
DATE JUL - 1 1008

State of Hawai'i
University of Hawai'i
University of Hawai'i - West O'ahu
Instruction

Position Organization Chart

Chart IV

General Funds 27.00

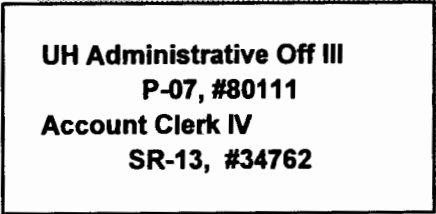
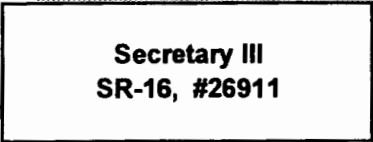
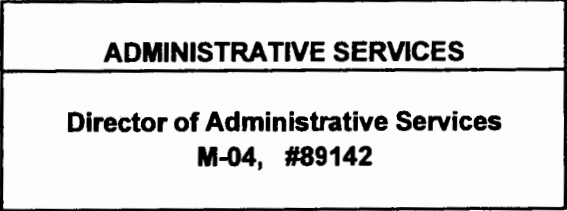


Instruction - Upper Division			
Instructional Positions (25.00)			
# 82230	# 84246	# 88824	# 88831
# 82650	# 84676	# 88825	# 88832
# 82656	# 85438	# 88826	# 88833
# 83496	# 85439	# 88827	# 88834
# 83758	# 86688	# 88828	
# 83962	# 87445	# 88829	
# 84165	# 88823	# 88830	

*Position count not included on this page

**Secretary position to be redescribed, pending funding of position.

CHART UPDATED
JUL - 1 1998
DATE _____



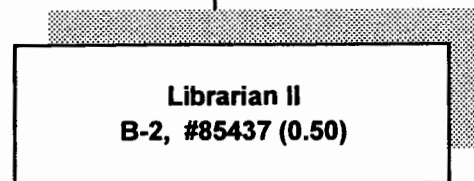
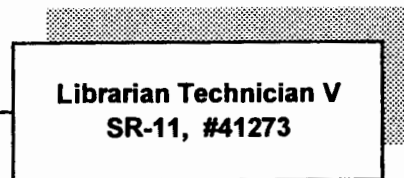
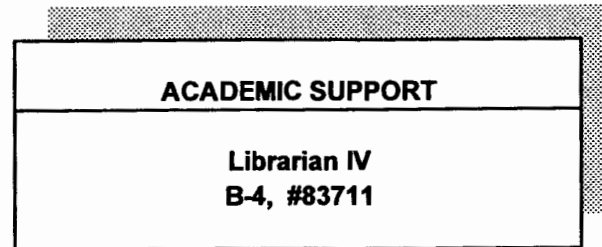
State of Hawai'i
University of Hawai'i
University of Hawai'i - West O'ahu
Administrative Services

Position Organization Chart

Chart V

General Funds 4.00

CHART UPDATED
DATE JUL - 1 1998



State of Hawai'i
University of Hawai'i
University of Hawai'i - West O'ahu
Academic Support

Position Organization Chart

Chart VI

General Funds 2.50

CHART UPDATED
DATE JUL - 1 1998

State of Hawai'i
University of Hawai'i
University of Hawai'i - West O'ahu
Center for Labor Education and Research

Position Organization Chart

Chart VII

General Funds 4.00

CENTER FOR LABOR EDUCATION
AND RESEARCH

*Specialist
S-5, #85401

Secretary II
SR-14, #14847

Assistant Specialist
S-3, #85174

Assistant Specialist
S-3, #85402

*Director

+++ CLEAR Staff also includes a temporary position, Associate Specialist, S-4, #85180T

CHART UPDATED
JUL - 1 1998
DATE