

STATE OF HAWAII
UNIVERSITY OF HAWAII
COMMUNITY COLLEGES
OFFICE OF THE SENIOR VICE PRESIDENT
AND
CHANCELLOR FOR COMMUNITY COLLEGES

ORGANIZATION CHART

CHART I

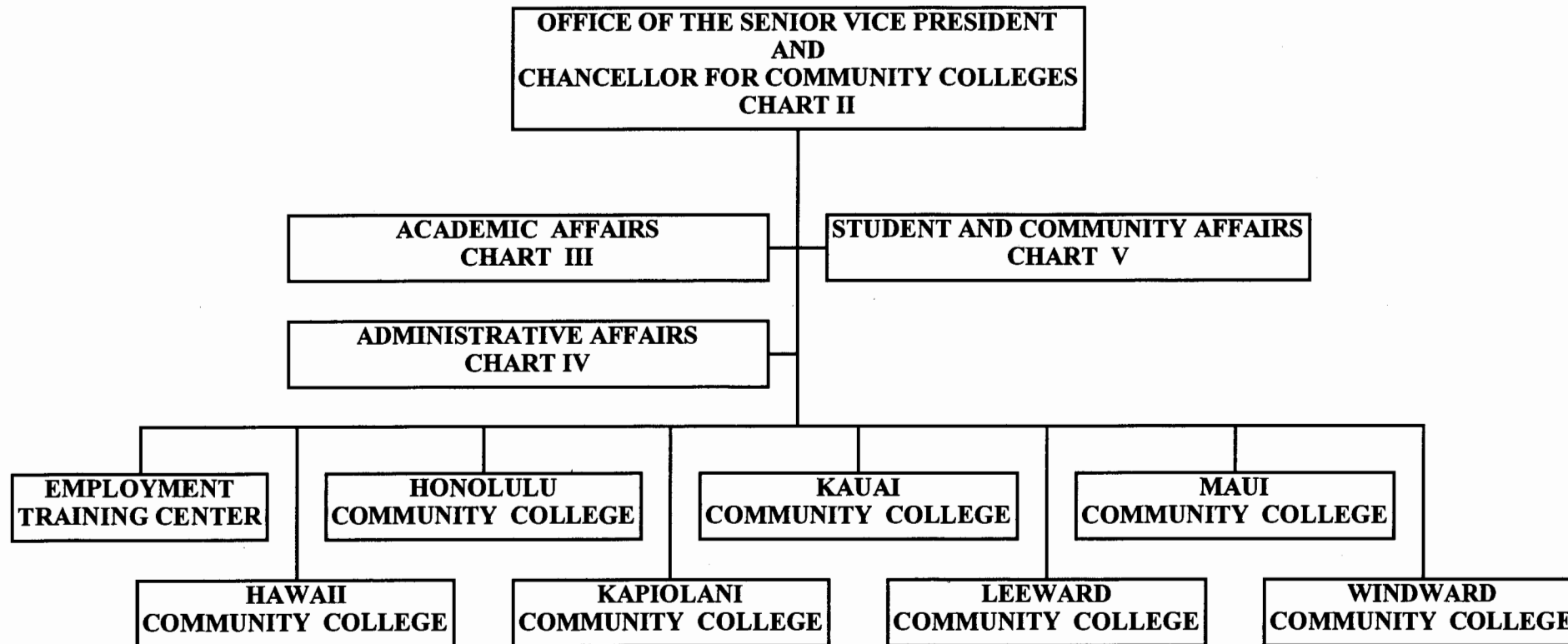


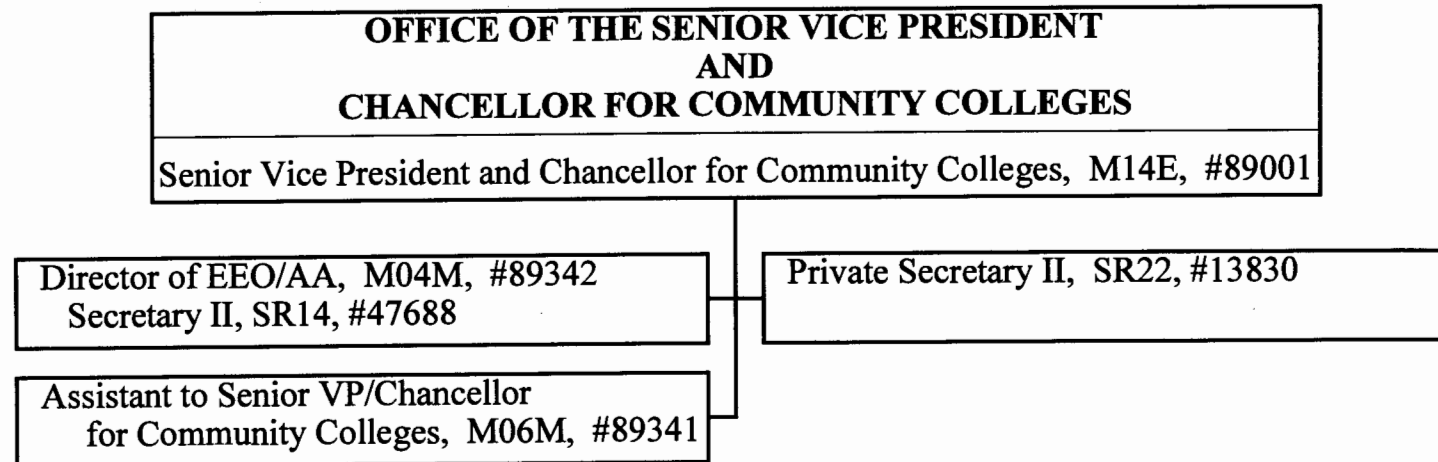
CHART UPDATED
DATE JUL - 1 2000

	Perm
General Fund	40.25
(N) Federal Funds	1.25

STATE OF HAWAII
UNIVERSITY OF HAWAII
COMMUNITY COLLEGES
OFFICE OF THE SENIOR VICE PRESIDENT
AND
CHANCELLOR FOR COMMUNITY COLLEGES

POSITION ORGANIZATION CHART

CHART II



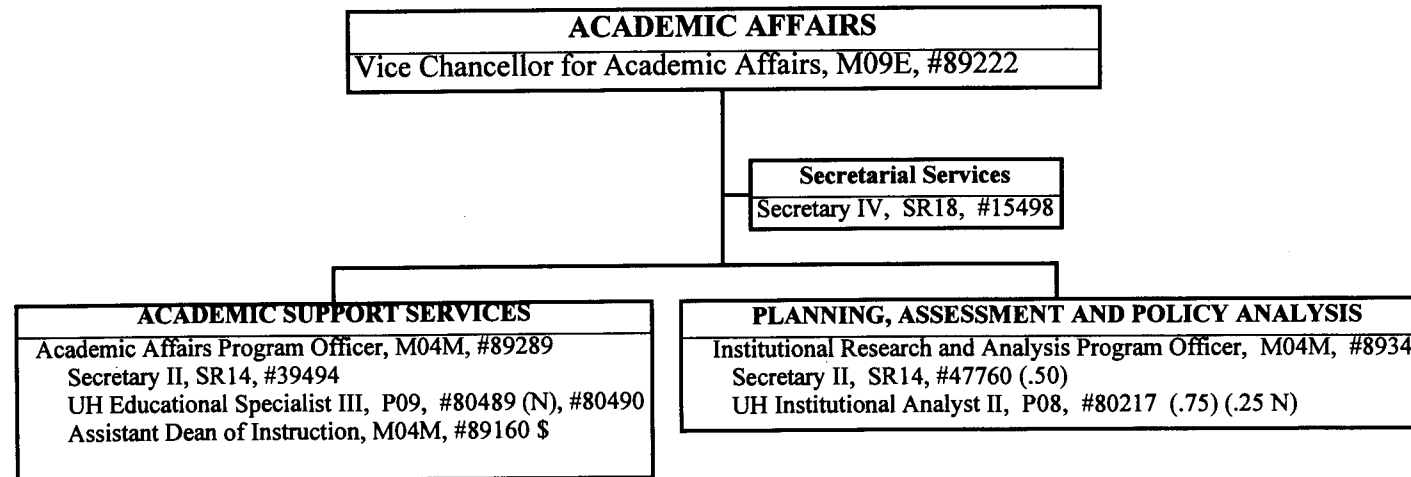
General Fund Perm
5.00

CHART UPDATED
DATE JUL - 1 2000

STATE OF HAWAII
UNIVERSITY OF HAWAII
COMMUNITY COLLEGES
OFFICE OF THE SENIOR VICE PRESIDENT
AND
CHANCELLOR FOR COMMUNITY COLLEGES

POSITION ORGANIZATION CHART

CHART III



Perm
General Fund 8.25
(N) Federal Funds 1.25

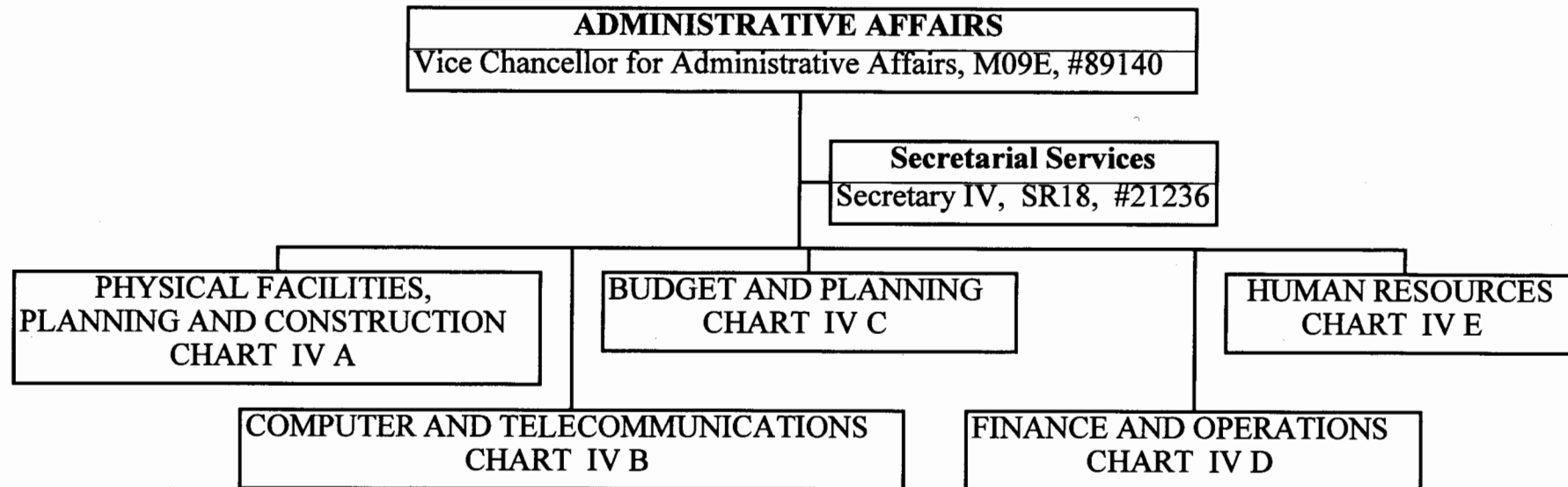
\$ Position count transferred from Kapiolani CC, to be redescribed to Academic Affairs Executive/Managerial position.

CHART UPDATED
JUL - 1 2000
DATE _____

STATE OF HAWAII
UNIVERSITY OF HAWAII
COMMUNITY COLLEGES
OFFICE OF THE SENIOR VICE PRESIDENT
AND
CHANCELLOR FOR COMMUNITY COLLEGES

POSITION ORGANIZATION CHART

CHART IV



General Fund Perm 2.00

CHART UPDATED
DATE JUL - 1 2000

STATE OF HAWAII
UNIVERSITY OF HAWAII
COMMUNITY COLLEGES
OFFICE OF THE SENIOR VICE PRESIDENT
AND
CHANCELLOR FOR COMMUNITY COLLEGES

POSITION ORGANIZATION CHART

CHART IV A



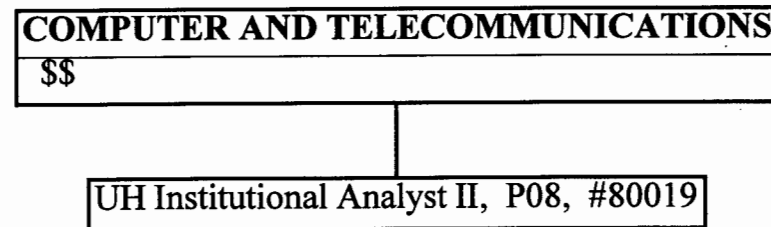
General Fund Perm
6.00

CHART UPDATED
DATE JUL - 1 2000

STATE OF HAWAII
UNIVERSITY OF HAWAII
COMMUNITY COLLEGES
OFFICE OF THE SENIOR VICE PRESIDENT
AND
CHANCELLOR FOR COMMUNITY COLLEGES

POSITION ORGANIZATION CHART

CHART IV B



Perm
General Fund 1.00

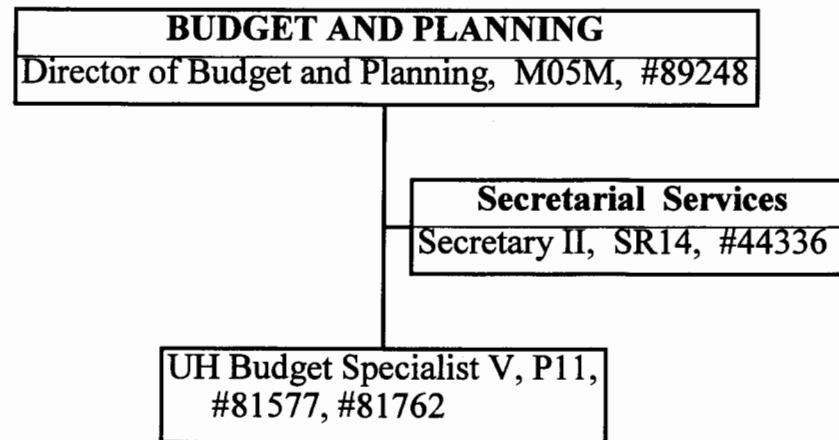
\$\$ Supervision temporarily provided by the Vice Chancellor for Administrative Affairs, #89140.
A reorganization will be requested.

CHART UPDATED
DATE JUL - 1 2000

STATE OF HAWAII
UNIVERSITY OF HAWAII
COMMUNITY COLLEGES
OFFICE OF THE SENIOR VICE PRESIDENT
AND
CHANCELLOR FOR COMMUNITY COLLEGES

POSITION ORGANIZATION CHART

CHART IV C



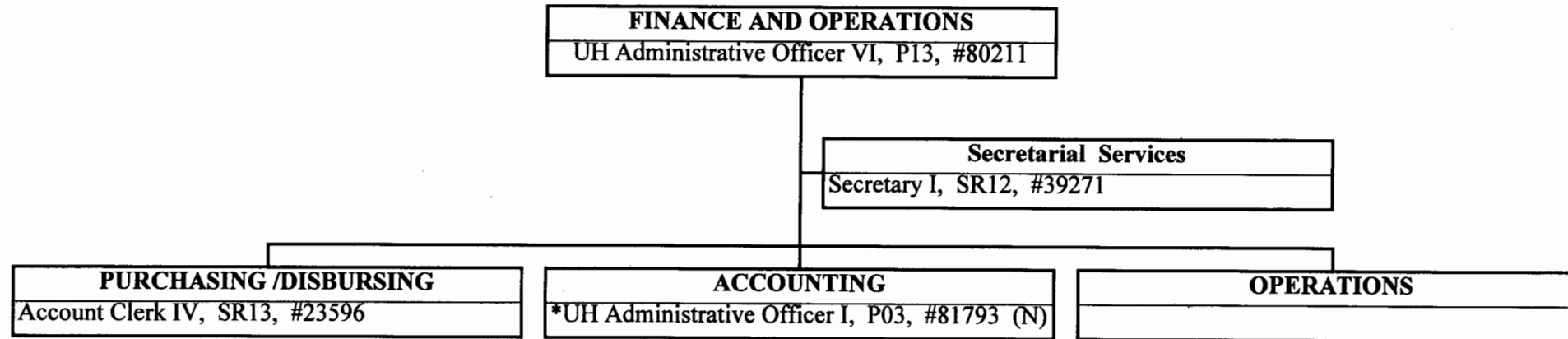
General Fund Perm
4.00

CHART UPDATED
DATE JUL - 1 2000

STATE OF HAWAII
UNIVERSITY OF HAWAII
COMMUNITY COLLEGES
OFFICE OF THE SENIOR VICE PRESIDENT
AND
CHANCELLOR FOR COMMUNITY COLLEGES

POSITION ORGANIZATION CHART

CHART IV D



* Temporary Position - Federally Funded

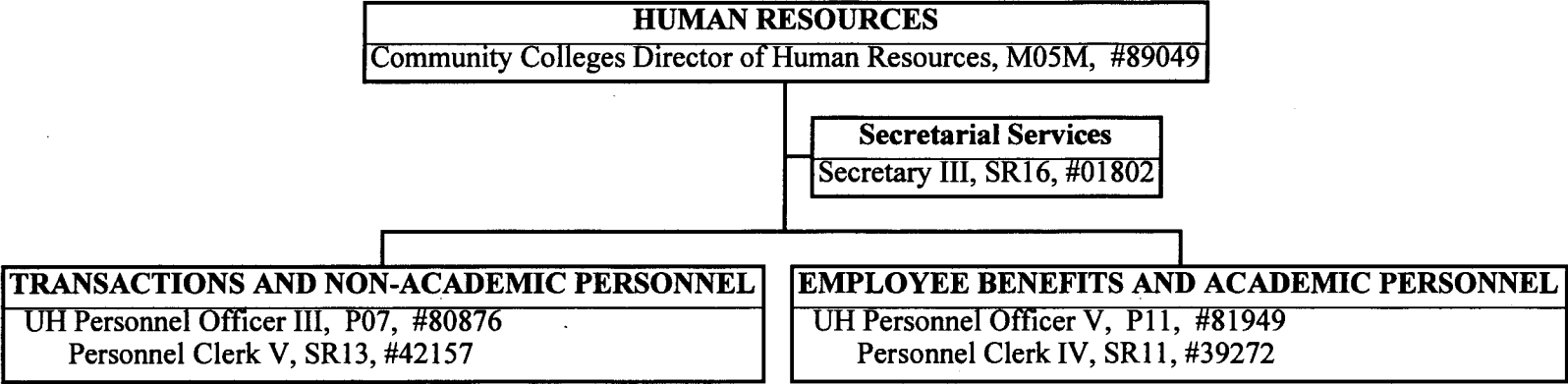
	<u>Perm</u>
General Fund	3.00

CHART UPDATED
DATE JUL - 1 2000

STATE OF HAWAII
UNIVERSITY OF HAWAII
COMMUNITY COLLEGES
OFFICE OF THE SENIOR VICE PRESIDENT
AND
CHANCELLOR FOR COMMUNITY COLLEGES

POSITION ORGANIZATION CHART

CHART IV E



General Fund Perm
6.00

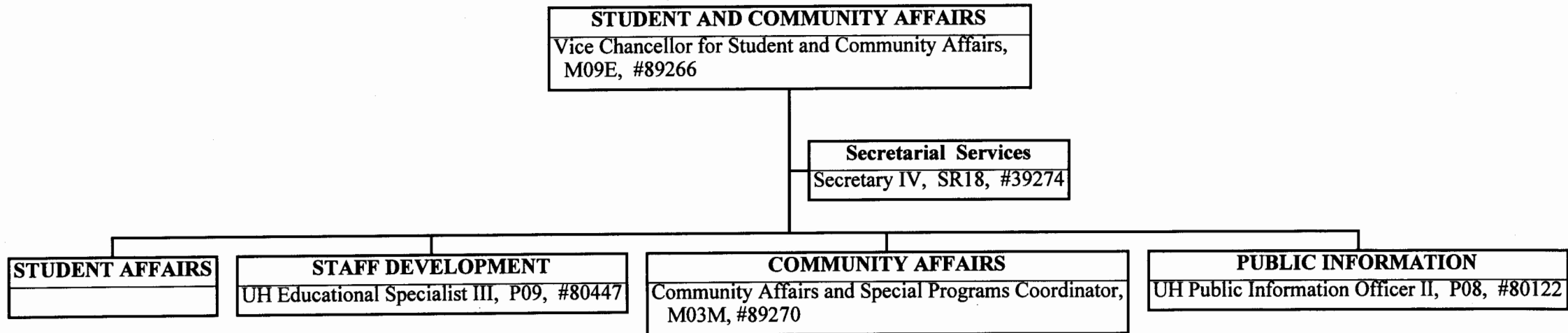
CHART UPDATED

DATE JUL - 1 2000

STATE OF HAWAII
UNIVERSITY OF HAWAII
COMMUNITY COLLEGES
OFFICE OF THE SENIOR VICE PRESIDENT
AND
CHANCELLOR FOR COMMUNITY COLLEGES

POSITION ORGANIZATION CHART

CHART V



General Fund Perm
5.00

CHART UPDATED
DATE JUL - 1 2000