

STATE OF HAWAII  
UNIVERSITY OF HAWAII  
COMMUNITY COLLEGES  
HONOLULU COMMUNITY COLLEGE

Organization Chart  
Chart I

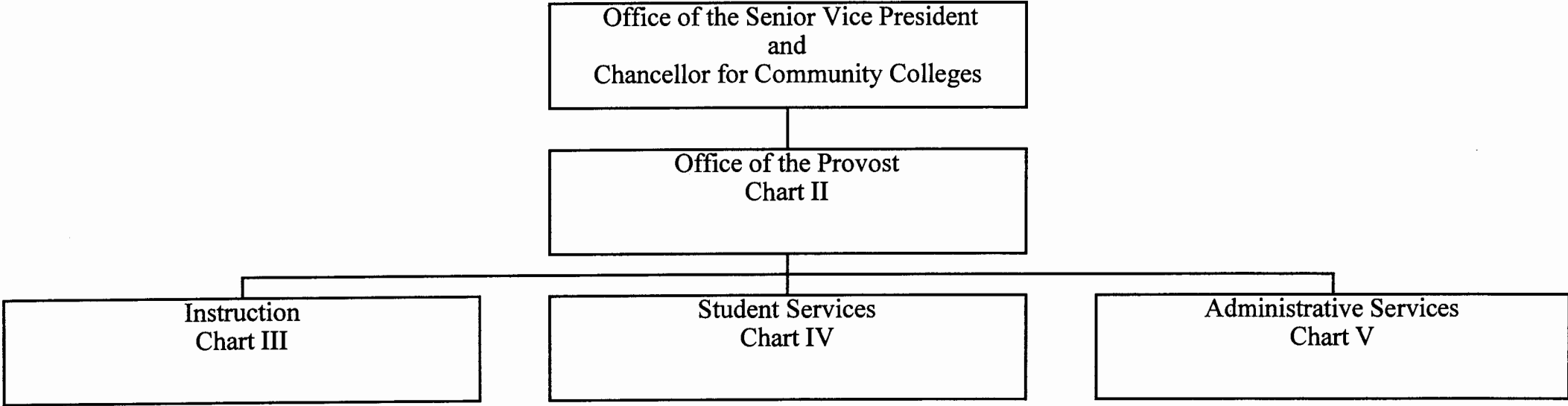


CHART UPDATED  
DATE JUL - 1 2000

|                     | <u>Perm</u> | <u>Temp</u> |
|---------------------|-------------|-------------|
| General Fund        | 272.00      | 7.00        |
| (B) Special Funds   | 5.00        |             |
| (W) Revolving Funds | 14.00       |             |

STATE OF HAWAII  
UNIVERSITY OF HAWAII  
COMMUNITY COLLEGES  
HONOLULU COMMUNITY COLLEGE  
OFFICE OF THE PROVOST

Position Organization Chart  
Chart II

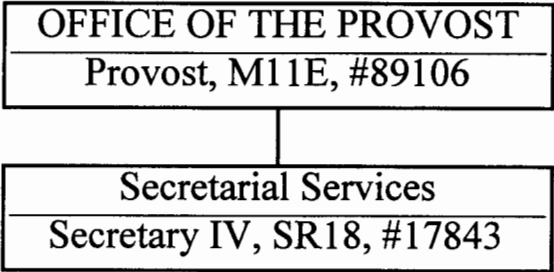


CHART UPDATED  
DATE JUL - 1 2000

STATE OF HAWAII  
UNIVERSITY OF HAWAII  
COMMUNITY COLLEGES  
HONOLULU COMMUNITY COLLEGE  
INSTRUCTION

Position Organization Chart  
Chart III

INSTRUCTION  
Dean of Instruction, M07M, #89025

Keahole Flight Center  
Assistant Dean of Instruction, M04M, #89338  
Secretary, #93100F/\*\*

Secretarial Services  
Secretary III, SR16, #22374

School-to-Work  
Faculty (Coordinator), #84376

Division I  
Assistant Dean, M04M, #89111\*\*  
Secretary II, SR14, #08767\*\*  
Faculty (22.00)  
Anthropology, #83341  
Economics, #82987  
Geography, #83820  
Information and Computer Science,  
#82060, 82131, 82233, 84649, 84669  
UH Computer Specialist IV, P09, #81641  
UH Computer Specialist III, P07, #81741  
UH Educational Specialist II, P06, #81048,  
80502T\*  
Psychology, #82197, 84591  
Social Science, #83893, 84457  
Sociology, #82406  
Carpentry, #82384, 83174  
Drafting Technology, #82092, 82956,  
83167  
Sheet Metal and Plastics, #84368  
Welding, #83212, 84660  
Apprenticeship, #83298  
Clerk Typist II, SR08, #14215

Division II  
Assistant Dean, M04M, #89148\*\*  
Secretary II, SR14, #01825\*\*  
UH Institutional Analyst II, P08, #81789  
Faculty (31.00)  
Fine Art, #83885  
History, #82283, 83911  
Humanities++  
Philosophy, #82854, 83930  
Religion, #82113  
Speech, #83423  
Administration of Justice, #83339  
Communication Arts, #82969, 83894, 84471  
Cosmetology, #82990, 83649, 83825, 84099  
UH Educational and Academic Support Specialist, P01E,  
#80879 (W)  
Fashion, #82883, 84681  
Fire and Environmental Emergency Response, #83639  
Human Services, #82843, 83529, 83838, 84122, 86639,  
86907, 86909, 87028, 87029, 87031, 87032  
Faculty #86980  
Clerk Stenographer II, SR09, #44568  
UH Early Childhood Specialist, #94626F (W)\*\*\*  
UH Early Childhood Specialist III, P07, \*\*, #80699, 81576,  
81679, 81786, 81822, 80809 (W), 80817 (W), 80831 (W)  
UH Early Childhood Specialist I, P01, \*\*,  
#80832 (W), 80834 (W), 80835 (W), 80839 (W),  
80844 (W), 80845 (W), 80846 (W), 80862 (W)  
Occupational and Environmental Safety Management, #83673

Division III  
Assistant Dean, M04M, #89170\*\*  
Secretary II, SR14, #24735\*\*  
Faculty (31.00)  
Biological Science, #82585, 84135  
Chemistry, #83964  
Electrical Engineering, #86615  
Engineering Science, #83138  
Mathematics, #82689, 82898, 83062,  
83282, 83687, 83797, 84096,  
84562, 84638, 84646  
Oceanography, #82773  
Physical Science, #82222, 83431,  
83708, 83881  
Science, #82331  
Computing, Electronics, and Networking,  
#83116, 83699, 86620, 86677  
Electrical Installation and Maintenance,  
#82757, 83368  
Refrigeration and Air Conditioning,  
#82422, 82518  
Cooperative Education, #82444, 83604

Division IV  
Assistant Dean, M04M, #89209\*\*  
Secretary II, SR14, #24544\*\*  
Faculty (32.00)  
Asian Pacific Language, #83966  
Asian Studies, #86638  
Business++  
English, #82440, 82466, 82561, 82796, 82912, 82959,  
83416, 83698, 83807, 84545, 84633  
Hawaiian Studies, #84689  
Journalism++  
Aeronautics Maintenance, #82383, 82567, 84423, 84533  
UH Educational Specialist II, P06, #81476, 81559  
Auto Body Repair and Painting, #84405, 86667, 87562  
Automotive Mechanics, #83725, 83801, 84064, 84410, 84586,  
84690, 84884  
UH Educational Specialist II, P06, #81562  
UH Educational Specialist I, P03, #81561  
Diesel Mechanics, #82964, 84480  
Marine Maintenance and Repair, #84688, 86927  
UH Educational Specialist II, P06, #80652, 81182

Commercial Baking program discontinued:  
(BOR approved 5-24-96)  
UH Educational and Academic Support  
Specialist, P01, #80877 (W)

APPROVED/DISAPPROVED:

*Joyce S. Tamm* 12/12/00  
SENIOR VICE PRESIDENT/ DATE  
CHANCELLOR FOR COMMUNITY COLLEGES

- \* Temporary Position
- \*\* Rotating Position
- \*\*\* Position to be established

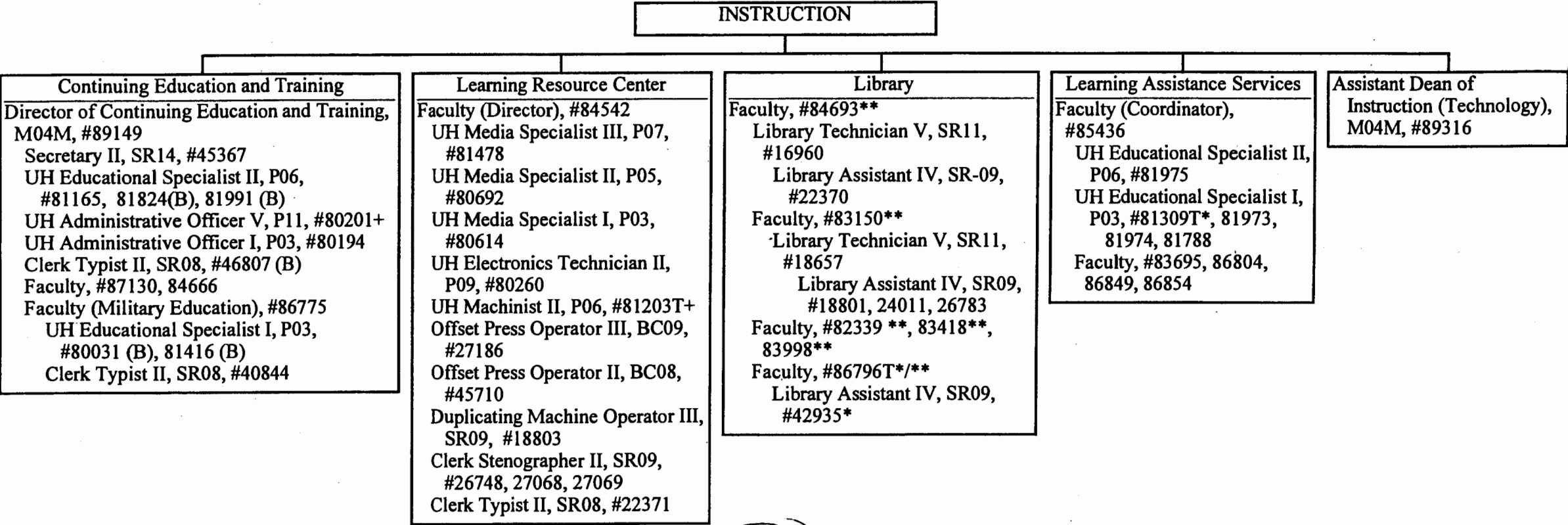
++ Courses to be taught by lecturers as needed

|                    |             |             |
|--------------------|-------------|-------------|
|                    | <u>Perm</u> | <u>Temp</u> |
| General Fund       | 145.00      | 2.00        |
| W) Revolving Funds | 14.00       |             |

80-1524

STATE OF HAWAII  
UNIVERSITY OF HAWAII  
COMMUNITY COLLEGES  
HONOLULU COMMUNITY COLLEGE  
INSTRUCTION

Position Organization Chart  
Chart III A



APPROVED/DISAPPROVED:

*[Signature]* 2/12/00  
\_\_\_\_\_  
SENIOR VICE PRESIDENT/ CHANCELLOR FOR COMMUNITY COLLEGES  
DATE

- \* Temporary Position
- \*\* Rotating Position
- + To Be Redescribed

|                   | Perm  | Temp |
|-------------------|-------|------|
| General Fund      | 42.00 | 4.00 |
| (B) Special Funds | 5.00  |      |

STATE OF HAWAII  
UNIVERSITY OF HAWAII  
COMMUNITY COLLEGES  
HONOLULU COMMUNITY COLLEGE  
STUDENT SERVICES

Position Organization Chart  
Chart IV

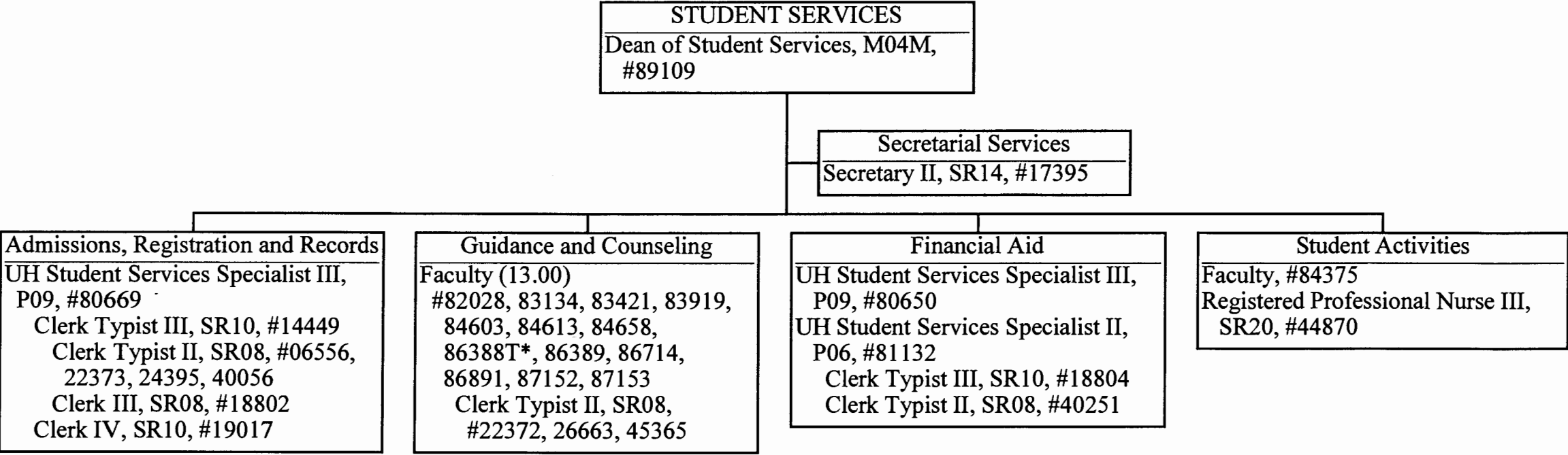


CHART UPDATED  
JUL - 1 2000  
DATE \_\_\_\_\_

\* Temporary Position

|              |             |             |
|--------------|-------------|-------------|
|              | <u>Perm</u> | <u>Temp</u> |
| General Fund | 31.00       | 1.00        |

STATE OF HAWAII  
UNIVERSITY OF HAWAII  
COMMUNITY COLLEGES  
HONOLULU COMMUNITY COLLEGE  
ADMINISTRATIVE SERVICES

Position Organization Chart  
Chart V

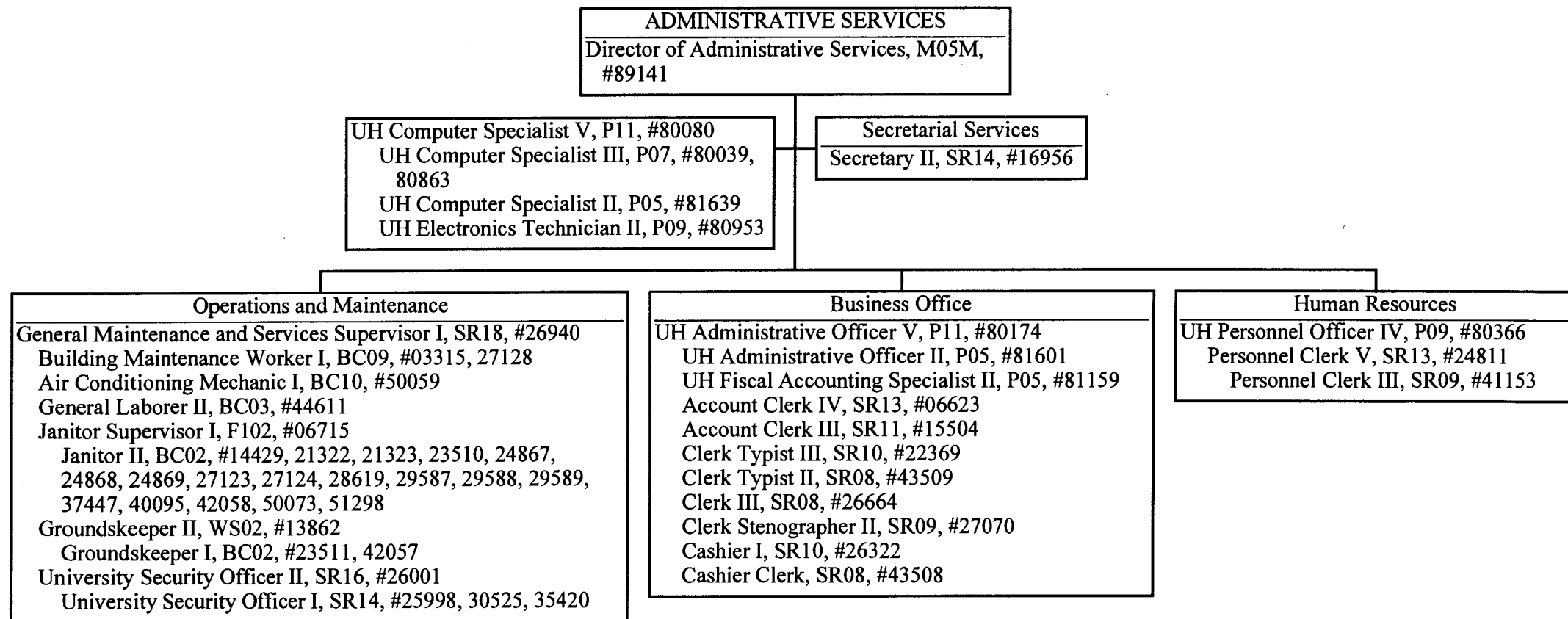


CHART UPDATED  
DATE JUL - 1 2000

General Fund Perm  
52.00

STATE OF HAWAII  
UNIVERSITY OF HAWAII  
COMMUNITY COLLEGES  
HONOLULU COMMUNITY COLLEGE  
INSTRUCTION

Position Organization Chart  
Chart III

INSTRUCTION  
Dean of Instruction, M07M, #89025

Keahole Flight Center  
Assistant Dean of Instruction, M04M, #89338  
Secretary, #93100F\*/\*\*\*

Secretarial Services  
Secretary III, SR16, #22374

School-to-Work  
Faculty (Coordinator), #84376

Division I

Assistant Dean, M04M, #89111\*\*  
Secretary II, SR14, #08767\*\*  
Faculty (22.00)  
Anthropology, #83341  
Economics, #82987  
Geography, #83820  
Information and Computer Science,  
#82060, 82131, 82233, 84649, 84669  
UH Computer Specialist IV, P09, #81641  
UH Computer Specialist III, P07, #81741  
UH Educational Specialist II, P06, #81048,  
80502T\*  
Psychology, #82197, 84591  
Social Science, #83893, 84457  
Sociology, #82406  
Carpentry, #82384, 83174  
UH Machinist II, P06, #81203T\*  
Drafting Technology, #82092, 82956,  
83167  
Sheet Metal and Plastics, #84368  
Welding, #83212, 84660  
Apprenticeship, #83298  
Clerk Typist II, SR08, #14215

Division II

Assistant Dean, M04M, #89148\*\*  
Secretary II, SR14, #01825\*\*  
UH Institutional Analyst II, P08, #81789  
Faculty (31.00)  
Fine Art, #83885  
History, #82283, 83911  
Humanities++  
Philosophy, #82854, 83930  
Religion, #82113  
Speech, #83423  
Administration of Justice, #83339  
Communication Arts, #82969, 83894, 84471  
Cosmetology, #82990, 83649, 83825, 84099  
UH Educational and Academic Support Specialist, P01E,  
#80879 (W)  
Fashion, #82883, 84681  
Fire and Environmental Emergency Response, #83639  
Human Services, #82843, 83529, 83838, 84122, 86639,  
86907, 86909, 87028, 87029, 87031, 87032  
Faculty #86980  
Clerk Stenographer II, SR09, #44568  
UH Early Childhood Specialist, #94626F (W)\*\*\*  
UH Early Childhood Specialist III, P07, \*\*, #80699, 81576,  
81679, 81786, 81822, 80809 (W), 80817 (W), 80831 (W)  
UH Early Childhood Specialist I, P01, \*\*,  
#80832 (W), 80834 (W), 80835 (W), 80839 (W),  
80844 (W), 80845 (W), 80846 (W), 80862 (W)  
Occupational and Environmental Safety Management, #83673

Division III

Assistant Dean, M04M, #89170\*\*  
Secretary II, SR14, #24735\*\*  
Faculty (31.00)  
Biological Science, #82585, 84135  
Chemistry, #83964  
Electrical Engineering, #86615  
Engineering Science, #83138  
Mathematics, #82689, 82898, 83062,  
83282, 83687, 83797, 84096,  
84562, 84638, 84646  
Oceanography, #82773  
Physical Science, #82222, 83431,  
83708, 83881  
Science, #82331  
Computing, Electronics, and Networking,  
#83116, 83699, 86620, 86677  
Electrical Installation and Maintenance,  
#82757, 83368  
Refrigeration and Air Conditioning,  
#82422, 82518  
Cooperative Education, #82444, 83604

Division IV

Assistant Dean, M04M, #89209\*\*  
Secretary II, SR14, #24544\*\*  
Faculty (32.00)  
Asian Pacific Language, #83966  
Asian Studies, #86638  
Business++  
English, #82440, 82466, 82561, 82796, 82912, 82959,  
83416, 83698, 83807, 84545, 84633  
Hawaiian Studies, #84689  
Journalism++  
Aeronautics Maintenance, #82383, 82567, 84423, 84533  
UH Educational Specialist II, P06, #81476, 81559  
Auto Body Repair and Painting, #84405, 86667, 87562  
Automotive Mechanics, #83725, 83801, 84064, 84410, 84586,  
84690, 84884  
UH Educational Specialist II, P06, #81562  
UH Educational Specialist I, P03, #81561  
Diesel Mechanics, #82964, 84480  
Marine Maintenance and Repair, #84688, 86927  
UH Educational Specialist II, P06, #80652, 81182

**SUPERSEDED**  
Date DEC 12 2000 **CHART UPDATED**  
DATE JUL - 1 2000

Commercial Baking program discontinued:  
(BOR approved 5-24-96)  
UH Educational and Academic Support  
Specialist, P01, #80877 (W)

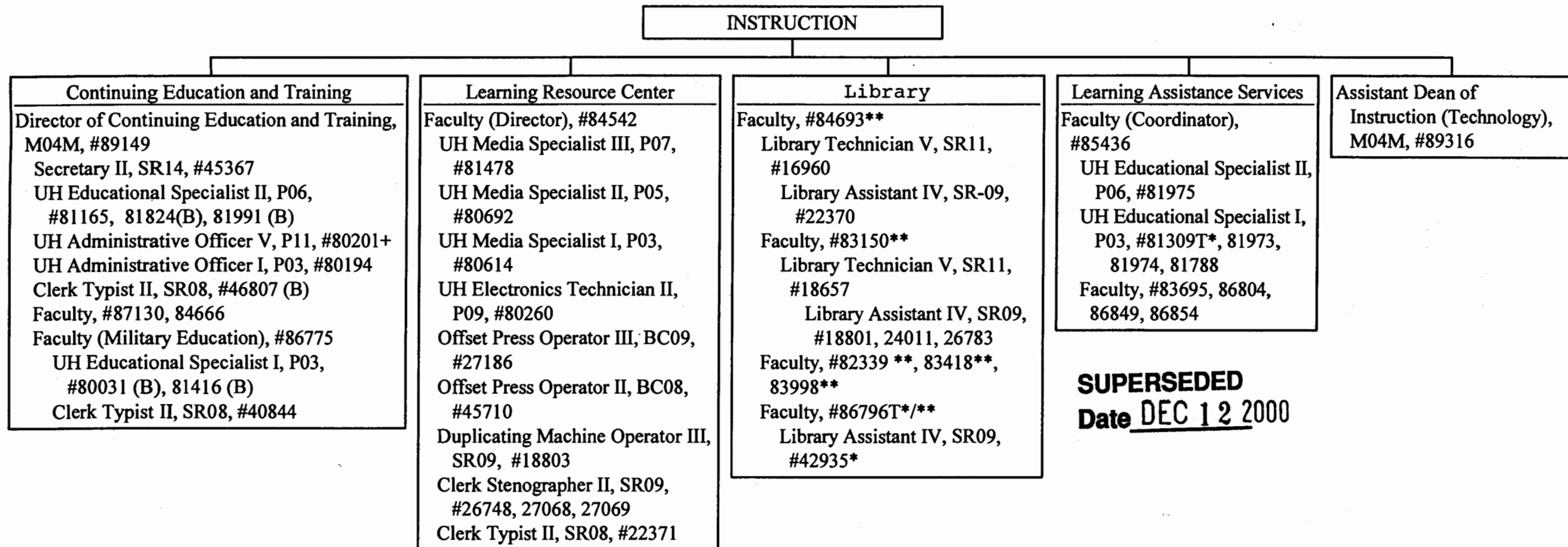
\* Temporary Position  
\*\* Rotating Position  
\*\*\* Position to be established

++ Courses to be taught by lecturers as needed

|                    | <u>Perm</u> | <u>Temp</u> |
|--------------------|-------------|-------------|
| General Fund       | 145.00      | 3.00        |
| W) Revolving Funds | 14.00       |             |

STATE OF HAWAII  
UNIVERSITY OF HAWAII  
COMMUNITY COLLEGES  
HONOLULU COMMUNITY COLLEGE  
INSTRUCTION

Position Organization Chart  
Chart III A



**SUPERSEDED**  
**Date** DEC 12 2000

- \* Temporary Position
- \*\* Rotating Position
- + To Be Redescribed

**CHART UPDATED**  
**DATE** AUG 31 2000

|                   | <u>Perm</u> | <u>Temp</u> |
|-------------------|-------------|-------------|
| General Fund      | 42.00       | 3.00        |
| (B) Special Funds | 5.00        |             |