

STATE OF HAWAII  
UNIVERSITY OF HAWAII  
COMMUNITY COLLEGES  
KAUA'I COMMUNITY COLLEGE

Organization Chart  
Chart I

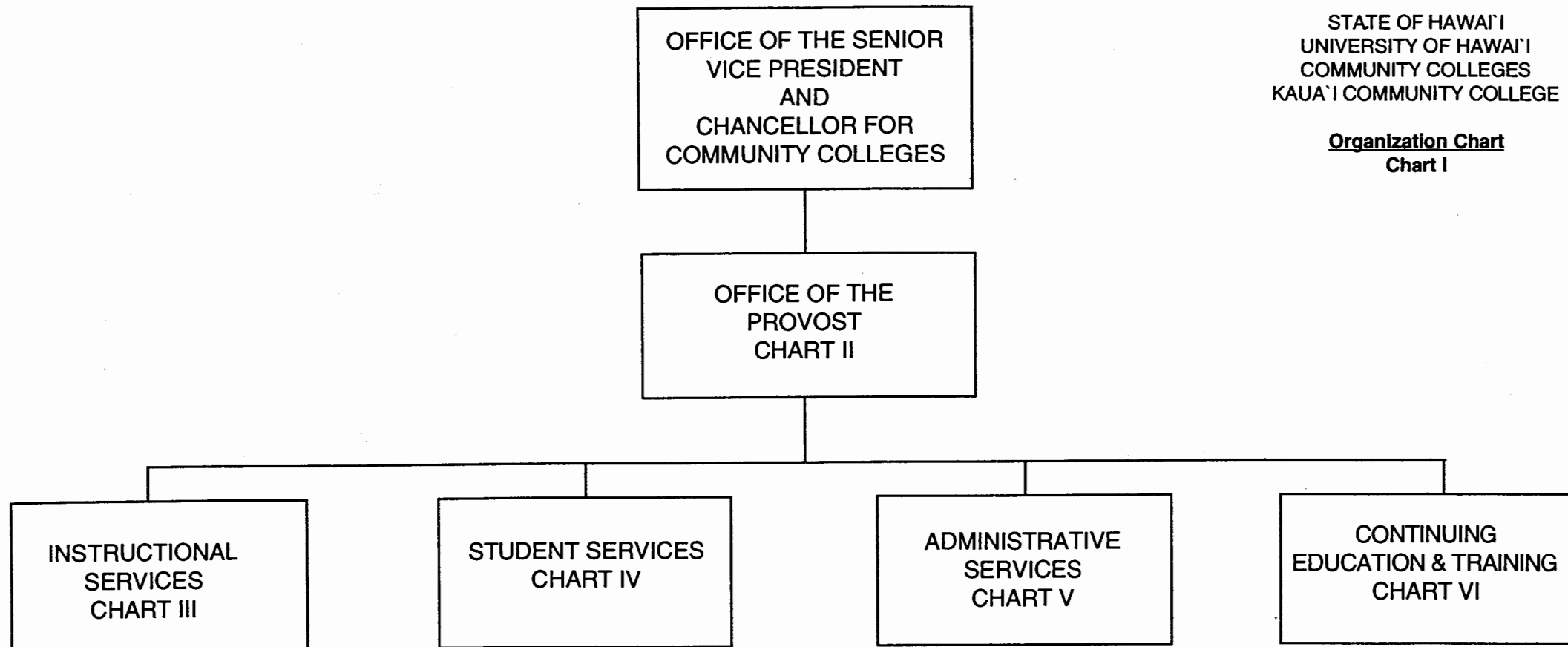
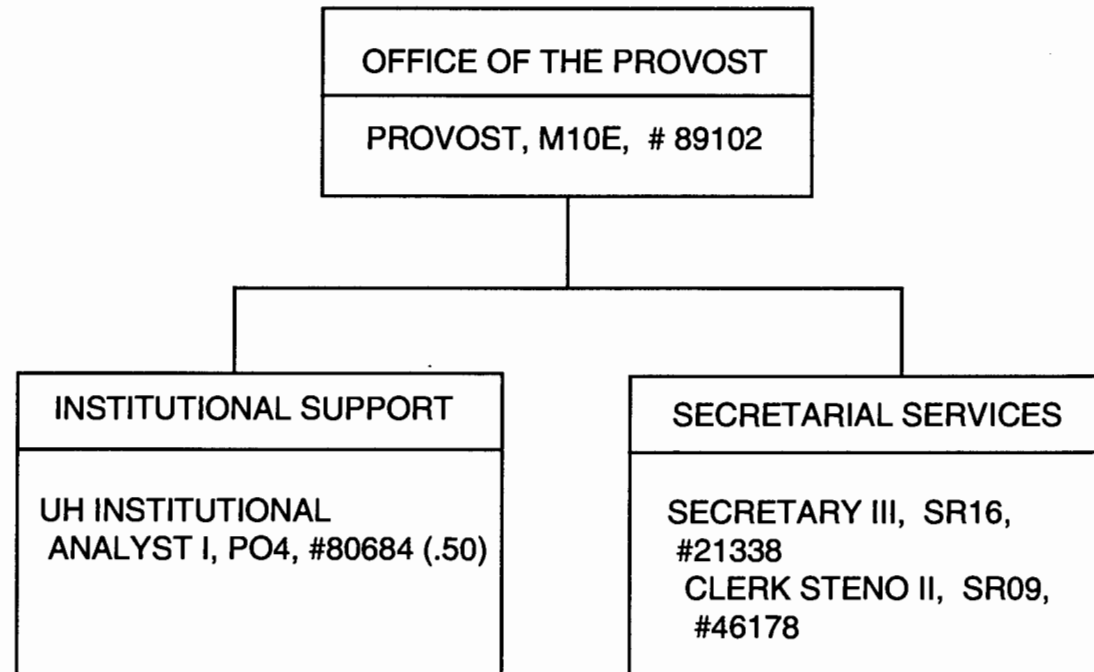


CHART UPDATED  
DATE JUL - 1 2000

|                     | <u>Perm</u> |
|---------------------|-------------|
| GENERAL FUND        | 138.50      |
| (W) REVOLVING FUNDS | 2.00        |

STATE OF HAWAII  
UNIVERSITY OF HAWAII  
COMMUNITY COLLEGES  
KAUA'I COMMUNITY COLLEGE  
OFFICE OF THE PROVOST

Position Organization Chart  
Chart II



**CHART UPDATED**  
DATE JUL - 1 2000

GENERAL FUND Perm  
3.50

**Position Organization Chart**  
**Chart III**

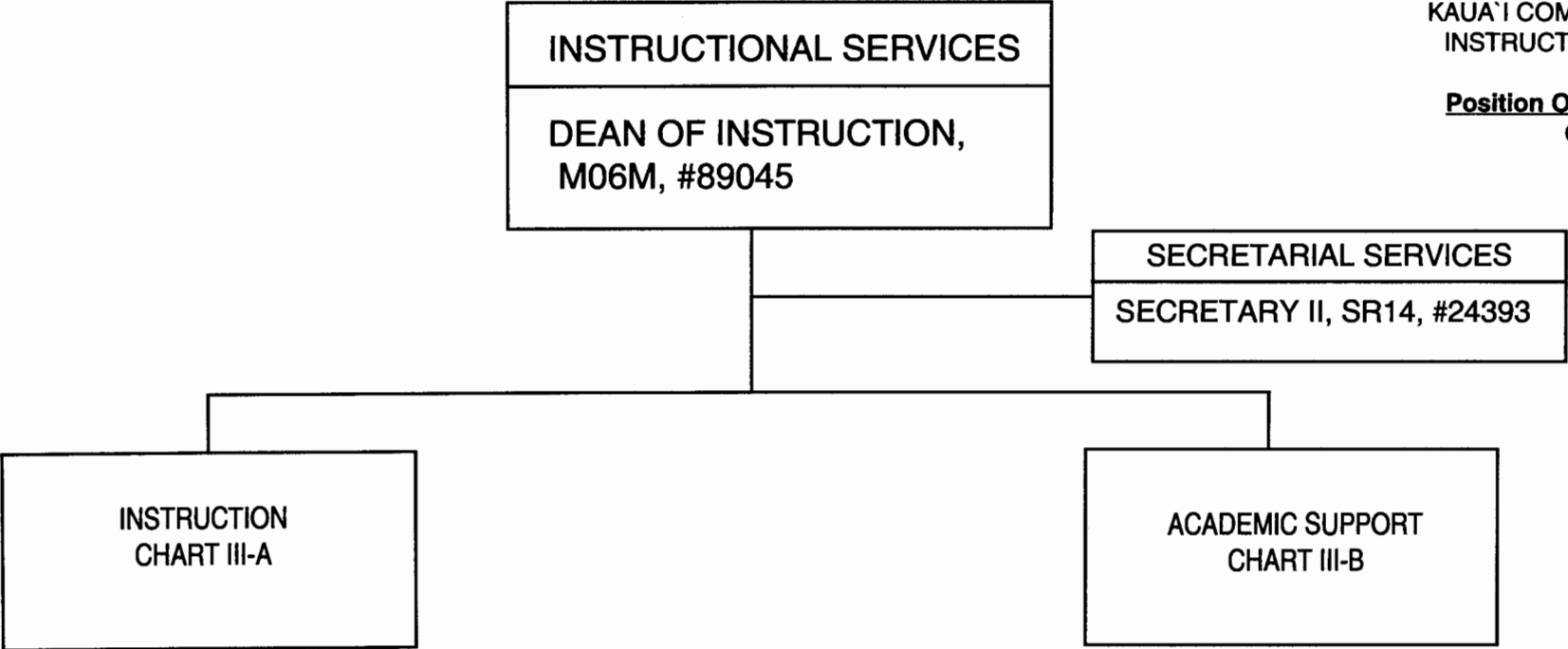


CHART UPDATED  
JUL - 1 2000  
DATE \_\_\_\_\_

STATE OF HAWAII  
UNIVERSITY OF HAWAII  
COMMUNITY COLLEGES  
KAUA'I COMMUNITY COLLEGE  
INSTRUCTION

Position Organization Chart  
Chart III-A

INSTRUCTION

STENO POOL  
CLERK-STENO II, SR09,  
#24785, 26901, 26902, 34970, 42211

CHART UPDATED  
DATE JUL - 1 2000

| LANGUAGE ARTS AND<br>HUMANITIES DIVISION   |
|--|
| CHAIRPERSON **<br>FACULTY (14.00)<br>FOREIGN/ASIAN/<br>PACIFIC LANGUAGES<br>#87094, #88107<br>ART<br>#83324, 83640<br>ENGLISH<br>#82285, 83727, 84176,<br>84277, 85047<br>HISTORY<br>#82274<br>PHILOSOPHY<br>#82149<br>SPEECH<br>#82262<br>MUSIC<br>#86618<br>HAWAIIAN STUDIES<br>#86811 |

| MATHEMATICS/SCIENCE/<br>SOCIAL SCIENCE DIVISION   |
|---|
| CHAIRPERSON **<br>FACULTY (10.00)<br>MATH<br>#84443, 84652<br>CHEMISTRY<br>#83179<br>BIOLOGICAL SCIENCE<br>#82934<br>PHYSICAL SCIENCE<br>#83645<br>PSYCHOLOGY<br>#83567<br>ANTHROPOLOGY<br>#83208<br>SOCIOLOGY<br>#82416<br>POLITICAL SCIENCE<br>#85046<br>COMPUTER SCIENCE<br>#85048 |

| TRADE AND<br>TECHNOLOGY DIVISION  |
|---|
| CHAIRPERSON **<br>FACULTY (8.00)<br>AUTO TECHNOLOGY<br>#84392, 84612<br>AUTO BODY REPAIR<br>#84153<br>CARPENTRY<br>#83132<br>MACHINE SHOP<br>#85045<br>ELECTRONICS<br>#83175, 86617<br>FACILITIES ENGINEERING<br>#84657 |

| HEALTH EDUCATION<br>DIVISION   |
|--|
| CHAIRPERSON **<br>FACULTY (13.00)<br>NURSING<br>#82579, 83856, 84015, 84687,<br>86763, 86765, 86779, 86786, 86889<br>HEALTH/P.E.<br>#86118<br>EARLY CHILDHOOD<br>#86810<br>UH EARLY CHILDHOOD<br>SPECIALIST II,<br>PO5, # 80623<br>UH EARLY CHILDHOOD<br>SPECIALIST I, PO1, #80613 |

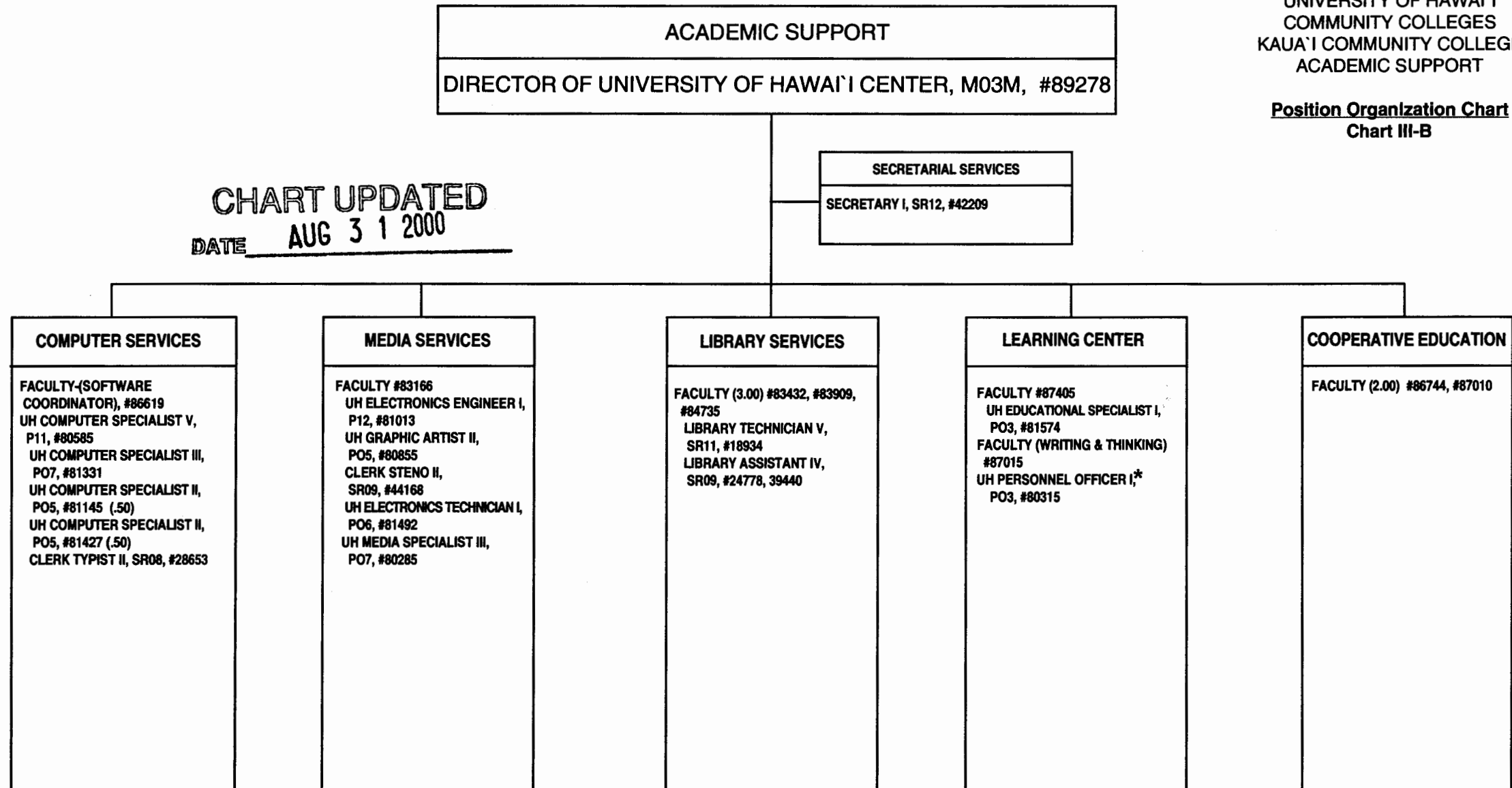
| BUSINESS EDUCATION<br>DIVISION  |
|---|
| CHAIRPERSON **<br>FACULTY (12.00)<br>ACCOUNTING<br>#82261, 84611<br>BUSINESS<br>#82376, 83732<br>SALES & MANAGEMENT<br>#85044<br>SECRETARIAL & RELATED<br>#82968, 83874<br>VISITOR INDUSTRY<br>#85043, 86901<br>FOOD SERVICES<br>#86579, 87014<br>UH EDUCATIONAL & ACADEMIC<br>SUPPORT SPECIALIST, PO1,<br>#81918, 97920F (W)<br>CAFETERIA HELPER, BC02<br>#48456 (W) |

\*\*Appointed from instructional positions within divisions on a rotating basis.

GENERAL FUND 62.00  
(W) REVOLVING FUNDS 2.00

STATE OF HAWAII  
UNIVERSITY OF HAWAII  
COMMUNITY COLLEGES  
KAUA'I COMMUNITY COLLEGE  
ACADEMIC SUPPORT

Position Organization Chart  
Chart III-B



\*To be redescribed

GENERAL FUND **Perm**  
25.00

STATE OF HAWAII  
UNIVERSITY OF HAWAII  
COMMUNITY COLLEGES  
KAUA'I COMMUNITY COLLEGE  
STUDENT SERVICES

Position Organization Chart  
Chart IV

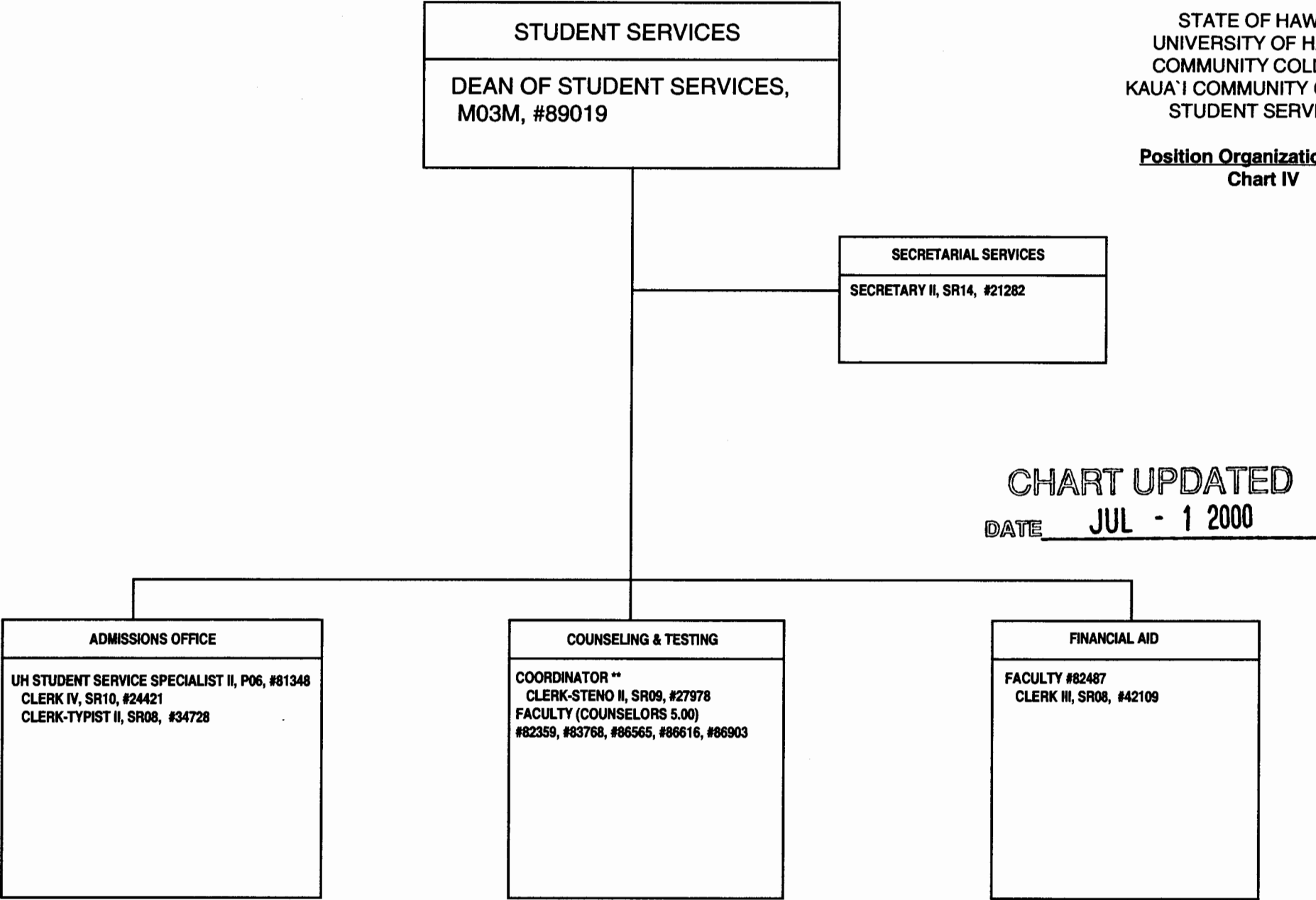


CHART UPDATED

DATE JUL - 1 2000

\*\*Coordinator is appointed from among faculty positions within the unit.

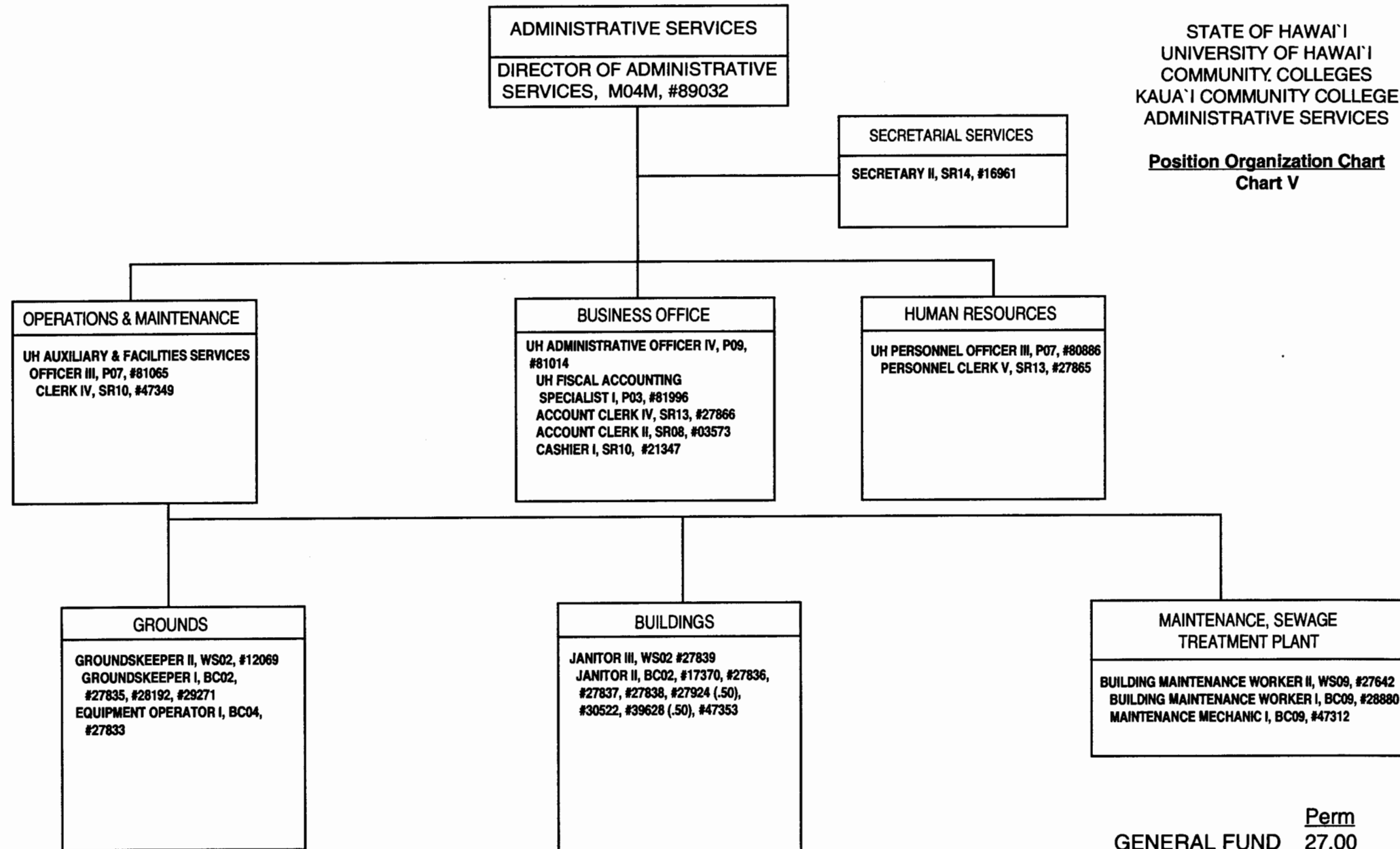


CHART UPDATED  
JUL - 1 2000  
DATE \_\_\_\_\_

STATE OF HAWAII  
UNIVERSITY OF HAWAII  
COMMUNITY COLLEGES  
KAUA'I COMMUNITY COLLEGE  
CONTINUING EDUCATION & TRAINING

Position Organization Chart  
Chart VI

|  |
|--|
| CONTINUING EDUCATION & TRAINING                              |
| DIRECTOR OF CONTINUING<br>EDUCATION & TRAINING, M03M, #89178 |

|   |
|---|
| SECRETARIAL SERVICES  |
| SECRETARY II, SR14, #28250<br>CLERK STENO II, SR09, #42210<br>CLERK III, SR08, #46849 |

|  |
|--|
| NON-CREDIT PROGRAMS  |
| FACULTY (2.00)<br>VISITOR INDUSTRY, #86687<br>SMALL BUSINESS, #86685 |

CHART UPDATED  
DATE JUL - 1 2000

GENERAL FUND Perm  
6.00