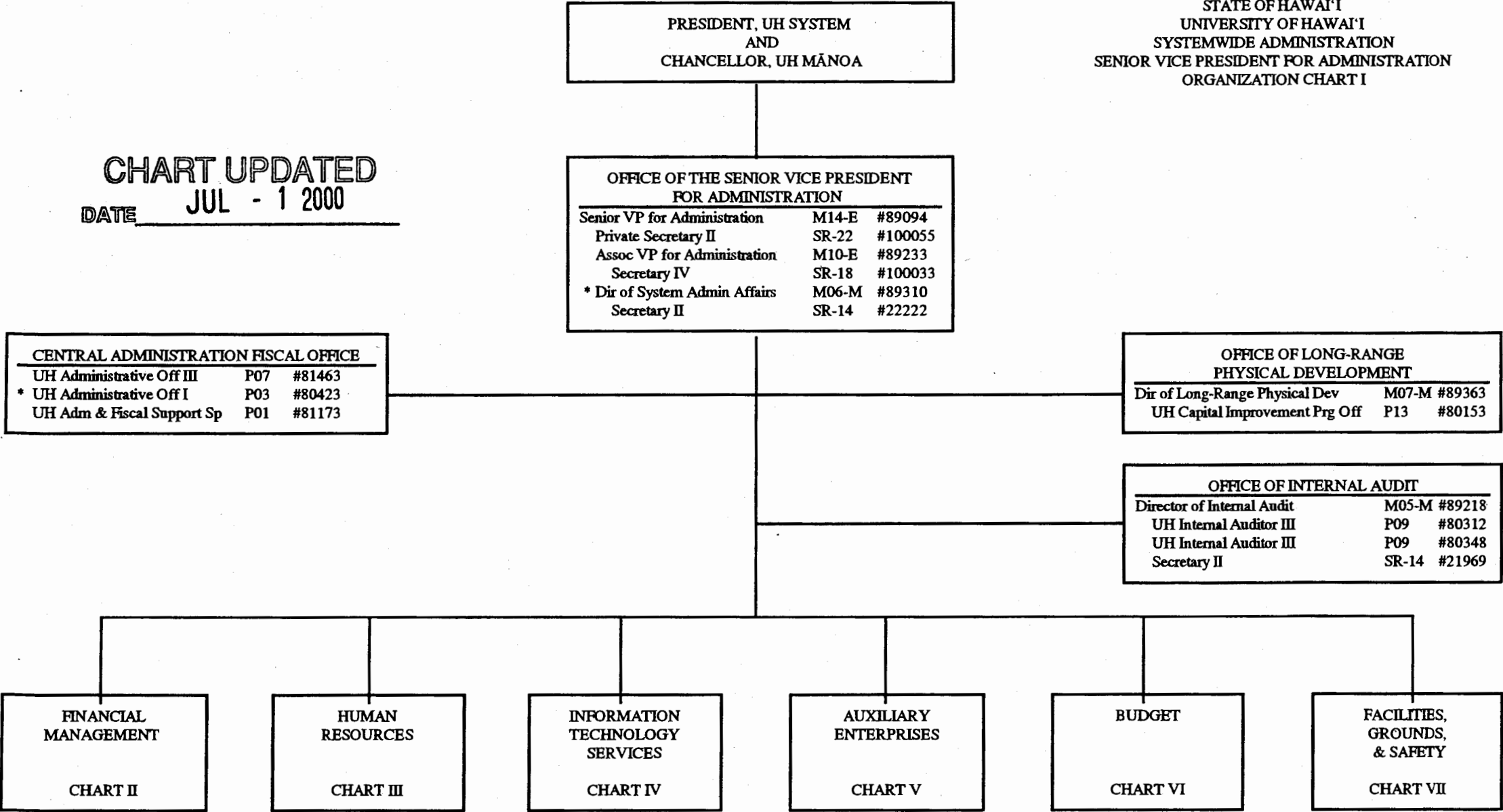


STATE OF HAWAII
UNIVERSITY OF HAWAII
SYSTEMWIDE ADMINISTRATION
SENIOR VICE PRESIDENT FOR ADMINISTRATION
ORGANIZATION CHART I

CHART UPDATED
DATE JUL - 1 2000

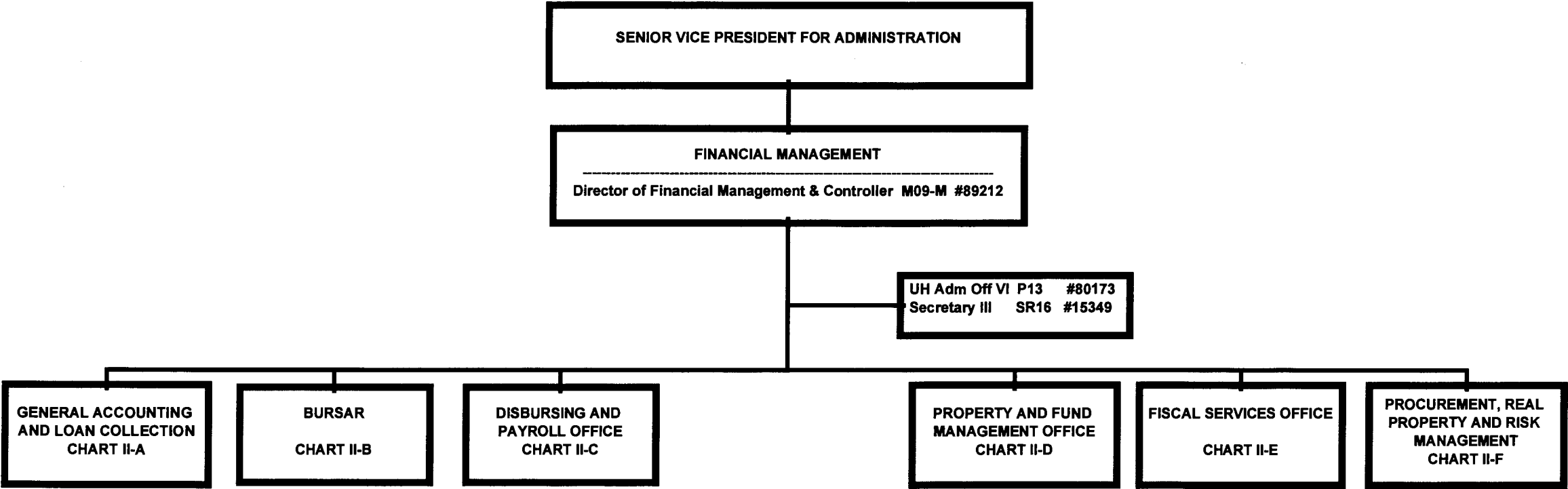


General Funds 15.00

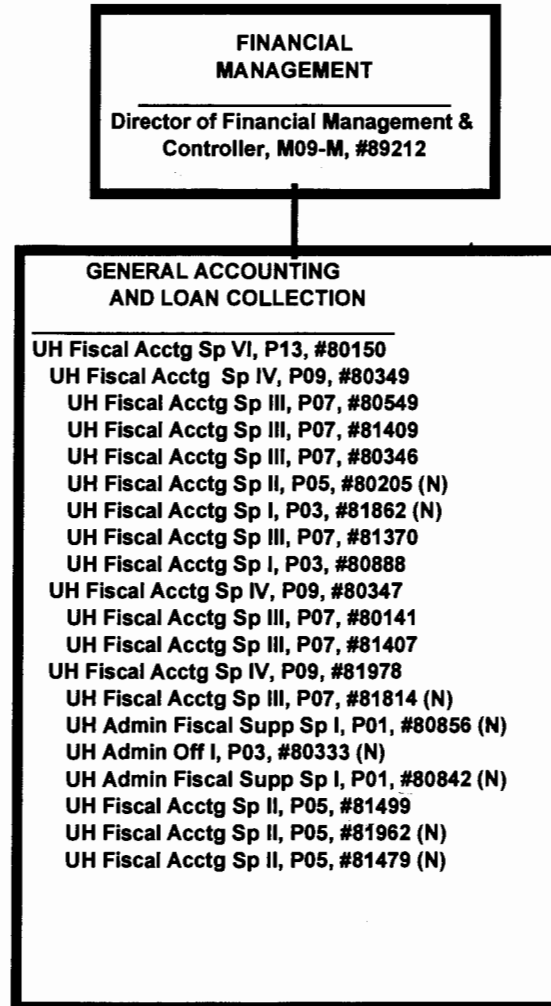
* Position to be redescribed.

07/01/00

STATE OF HAWAII
UNIVERSITY OF HAWAII
SENIOR VICE PRESIDENT FOR ADMINISTRATION
FINANCIAL MANAGEMENT
CHART II



STATE OF HAWAII
UNIVERSITY OF HAWAII
SENIOR VICE PRESIDENT FOR ADMINISTRATION
FINANCIAL MANAGEMENT
GENERAL ACCOUNTING AND LOAN COLLECTION OFFICE
CHART II-A

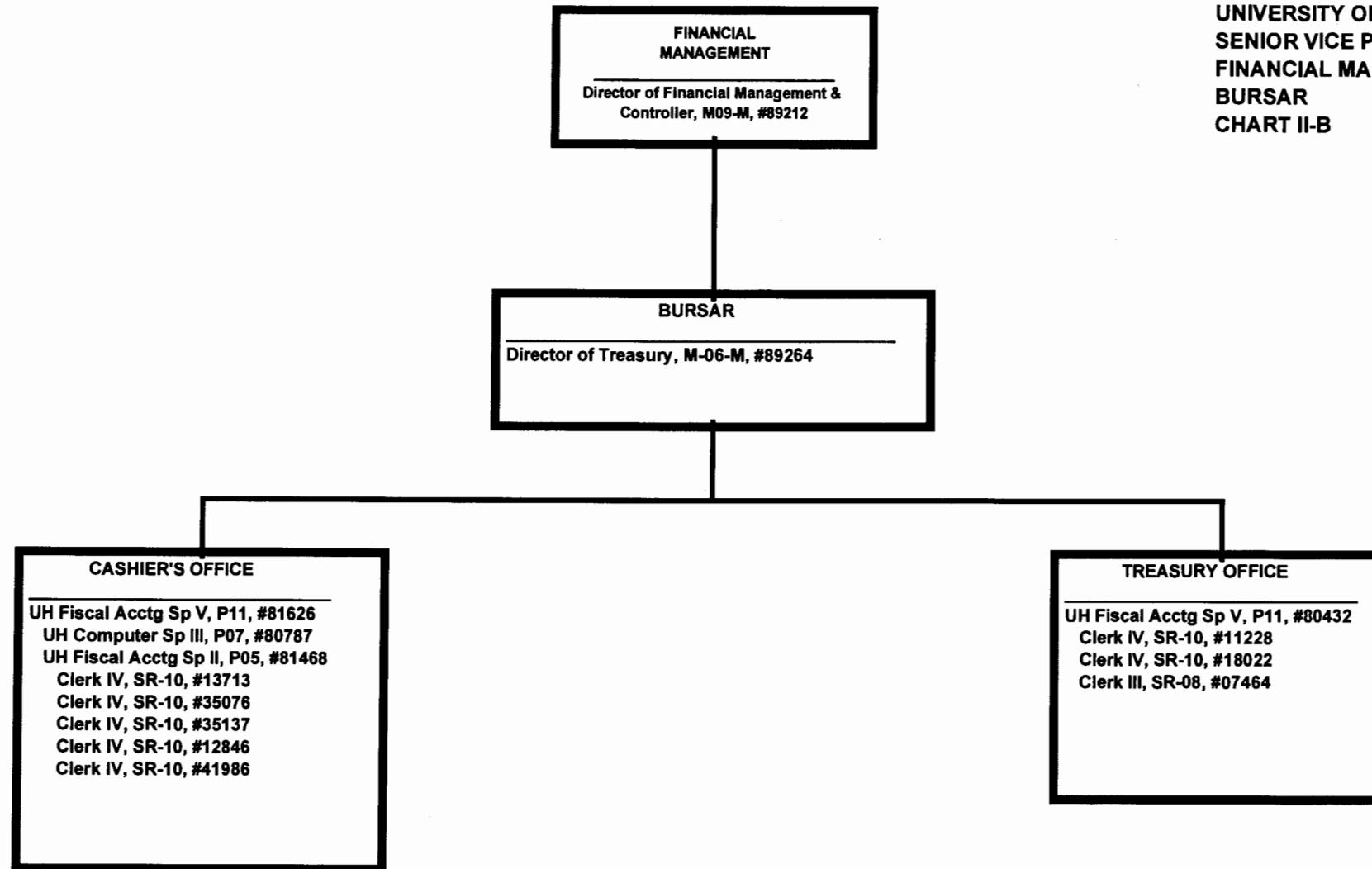


GENERAL FUNDS 12.00
FEDERAL FUNDS 8.00

N = FEDERAL FUNDED POSITIONS

CHART UPDATED
DATE JUL - 1 2000

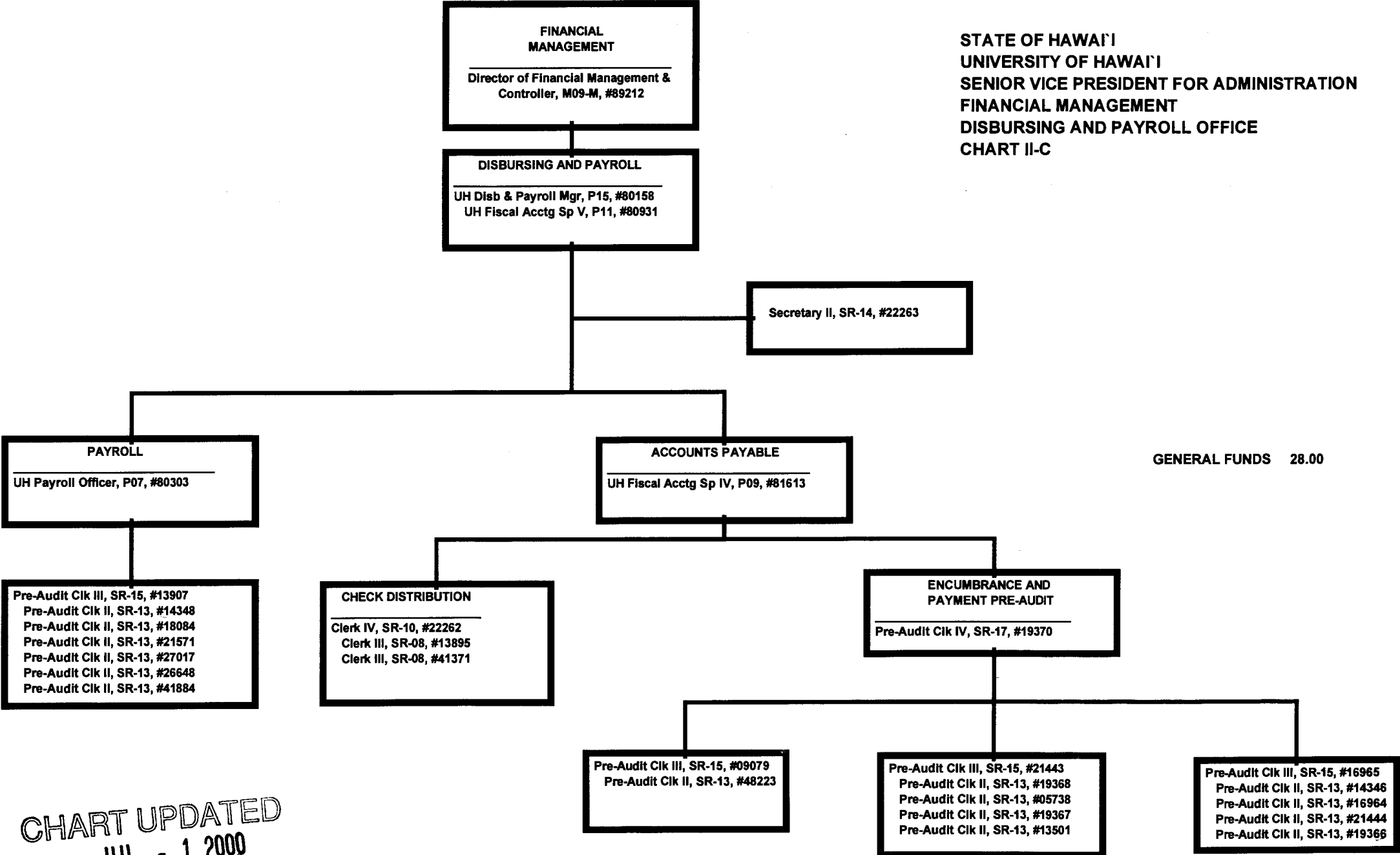
STATE OF HAWAII
UNIVERSITY OF HAWAII
SENIOR VICE PRESIDENT FOR ADMINISTRATION
FINANCIAL MANAGEMENT
BURSAR
CHART II-B



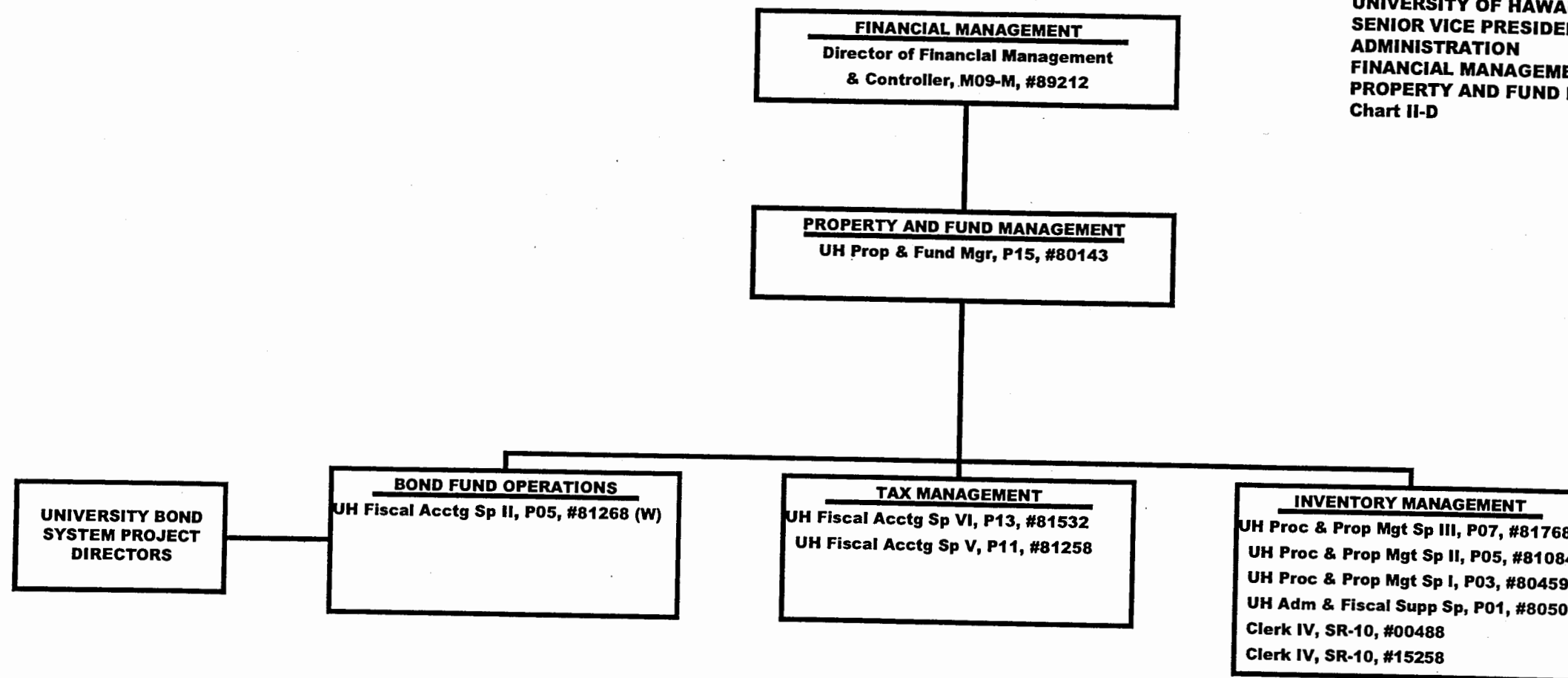
GENERAL FUNDS 13.00

CHART UPDATED
DATE JUL - 1 2000

STATE OF HAWAII
UNIVERSITY OF HAWAII
SENIOR VICE PRESIDENT FOR ADMINISTRATION
FINANCIAL MANAGEMENT
DISBURSING AND PAYROLL OFFICE
CHART II-C



STATE OF HAWAII
UNIVERSITY OF HAWAII
SENIOR VICE PRESIDENT FOR
ADMINISTRATION
FINANCIAL MANAGEMENT
PROPERTY AND FUND MANAGEMENT
Chart II-D



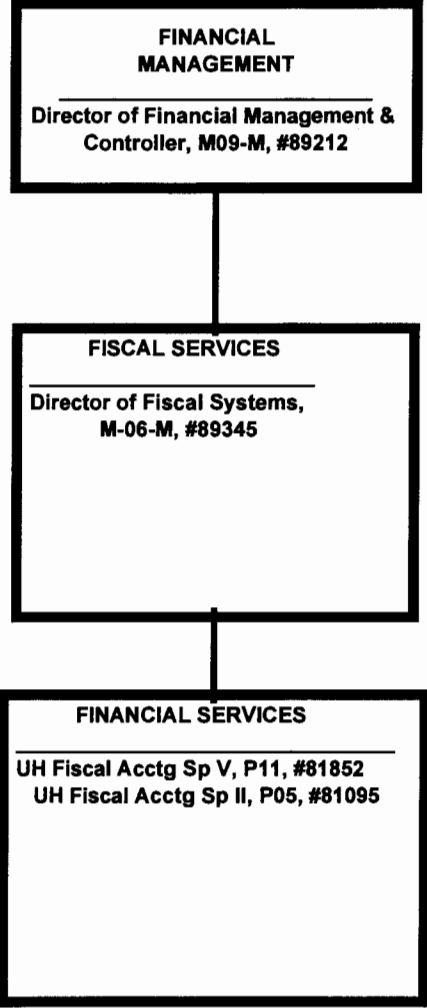
Approved:

Eugene S. Imai
Eugene S. Imai
Senior Vice President for Administration
Date: AUG 21 2000

W = Revolving Funds

GENERAL FUNDS 9.00
REVOLVING FUNDS 1.00

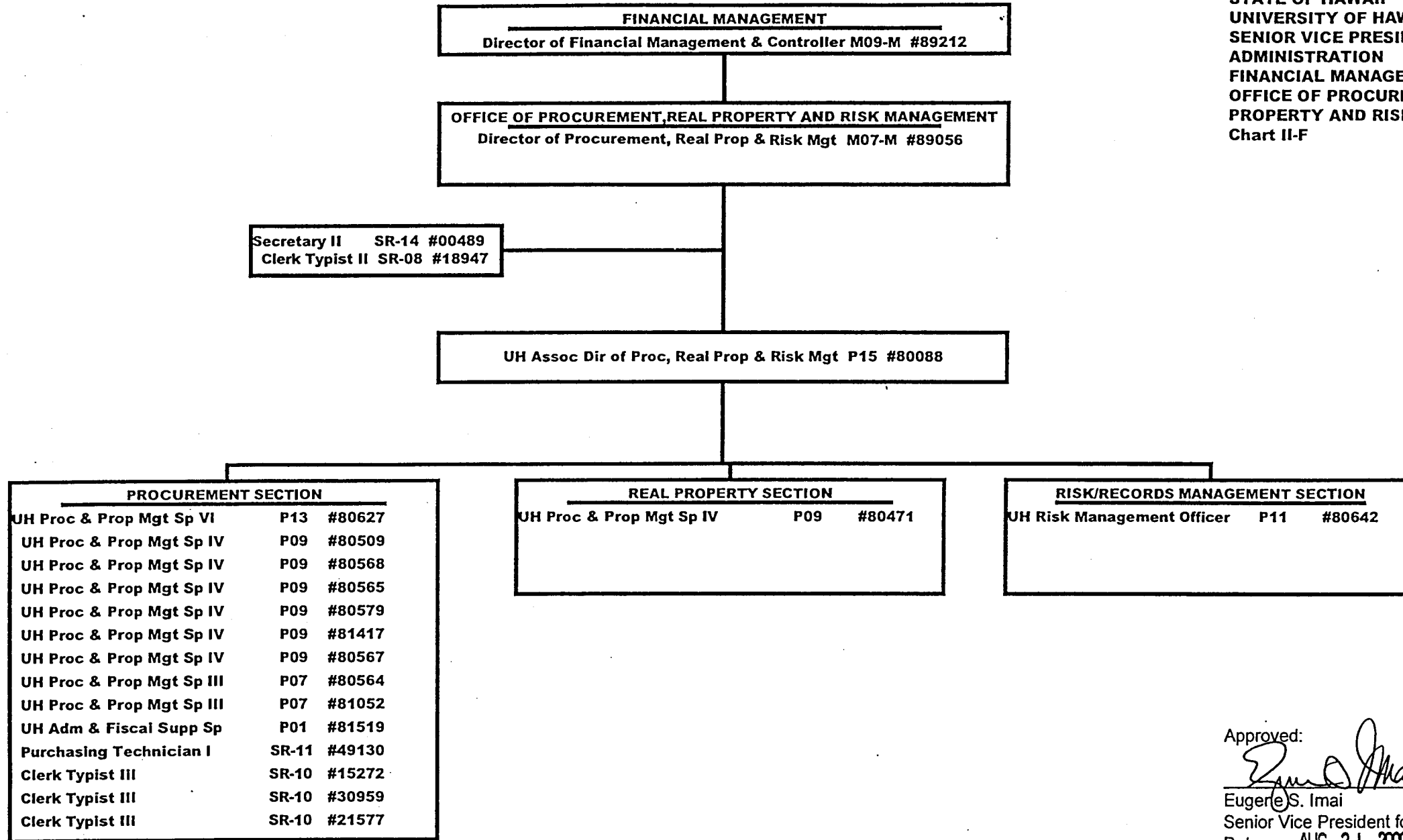
STATE OF HAWAII
UNIVERSITY OF HAWAII
SENIOR VICE PRESIDENT FOR ADMINISTRATION
FINANCIAL MANAGEMENT
FISCAL SERVICES OFFICE
CHART II-E

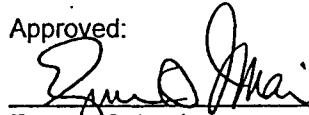


GENERAL FUNDS 3.00

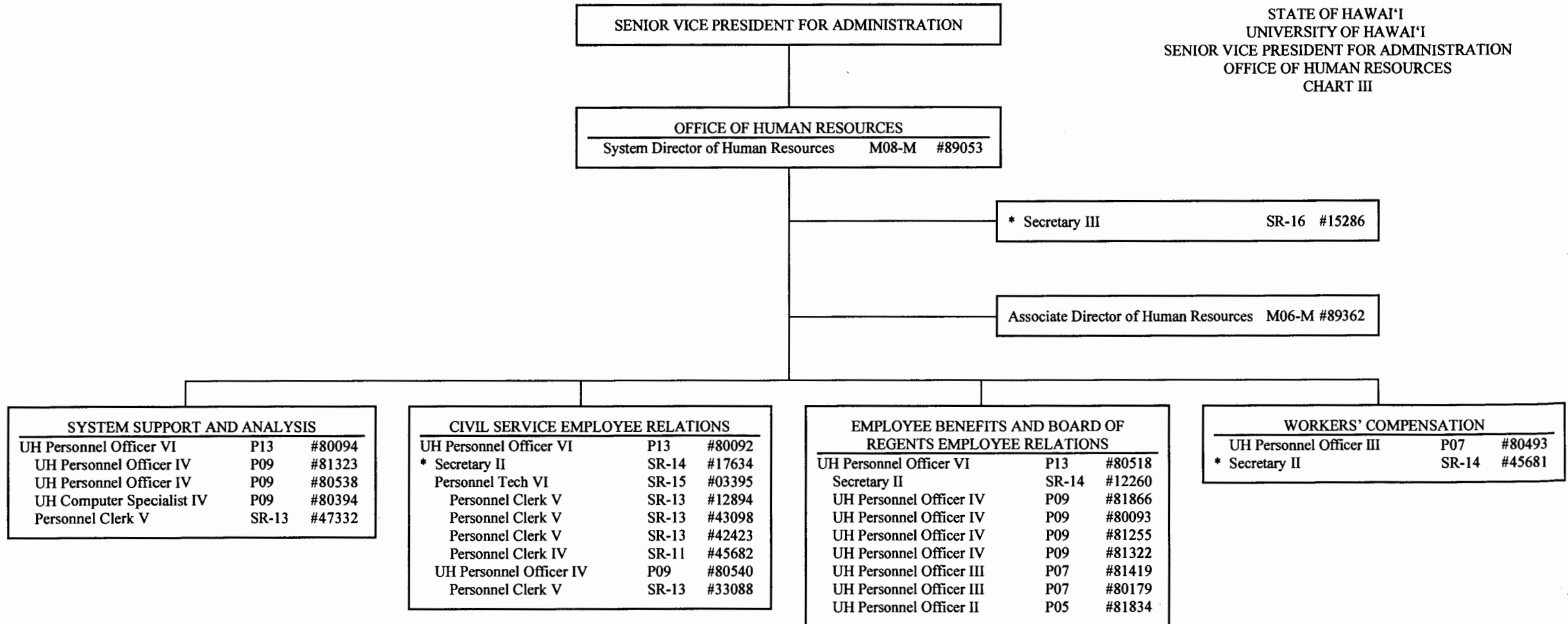
CHART UPDATED
DATE JUL - 1 2000

STATE OF HAWAII
UNIVERSITY OF HAWAII
SENIOR VICE PRESIDENT FOR
ADMINISTRATION
FINANCIAL MANAGEMENT
OFFICE OF PROCUREMENT, REAL
PROPERTY AND RISK MANAGEMENT
Chart II-F



Approved: 
Eugene S. Imai
Senior Vice President for Administration
Date: AUG 21 2000

STATE OF HAWAII
UNIVERSITY OF HAWAII
SENIOR VICE PRESIDENT FOR ADMINISTRATION
OFFICE OF HUMAN RESOURCES
CHART III



General Funds 28.00
* Positions to be redescribed.

o:\ssa\orgchart\ohr1.cht

CHART UPDATED
DATE JUL - 1 2000

STATE OF HAWAII
UNIVERSITY OF HAWAII
SENIOR VICE PRESIDENT FOR ADMINISTRATION
INFORMATION TECHNOLOGY SERVICES

CHART IV

Senior Vice President for Administration

Information Technology Services
Director M09-M 89268

Administrative Services
UH Admin Ofcr VI P13 80500*
Secretary I SR12 15463
UH Admin Ofcr IV P09 80160*
UH Admin Ofcr III P07 81753
UH Admin Fisc Supp Sp P01 81702
UH Comp Sp II P05 80036
UH Aux/Fac Svc Ofcr I P03 81604
Clerk III SR08 22676
Secretary I SR12 36650*

Secretary III SR16 40855
Clerk Typist II SR08 35456
UH Sys Prog V P11 80064
UH Admin Fisc Supp Sp P01 81642*

Management Information Systems
Director M07-M 89003
Secretary II SR14 21280
ITS Division Manager P15 80063
UH Comp Sp VI P13 80058
UH Comp Sp V P11 80035
UH Comp Sp V P11 80042
UH Comp Sp V P11 80048
UH Comp Sp V P11 81874
UH Comp Sp V P11 81908
(See NOTE 1)
UH Comp Sp IV P09 80044
UH Comp Sp IV P09 80049
UH Comp Sp IV P09 80050
UH Comp Sp IV P09 80060
UH Comp Sp IV P09 80214
UH Comp Sp IV P09 80464
UH Comp Sp IV P09 81839
UH Comp Sp IV P09 81863
UH Comp Sp IV P09 81907
UH Comp Sp IV P09 81999
UH Comp Sp III P07 80434
UH Comp Sp III P07 80466
UH Comp Sp III P07 80483
UH Comp Sp III P07 81905
UH Comp Sp I P03 80047
UH Comp Sp I P03 80484
UH Comp Sp I P03 81644
UH Comp Sp I P03 81842

Telecommunications
ITS Division Manager P15 80224
Secretary II SR14 12573
UH Comp Sp IV P09 81169

Distance Learning & Instructional Technology
DLIT Manager P15 81042
Secretary II SR14 18023
UH Comp Sp IV P09 80062
UH Media Sp III P07 81043
(See NOTE 1)
UH Comp Sp III P07 80416
UH Comp Sp III P07 81728
UH Media Sp III P07 81356
UH Media Sp II P05 80046

System Services
ITS Division Manager P15 80078
Secretary II SR14 14040

Information Services
UH Comp Sp VI P13 80057
Secretary I SR12 32114
UH Comp Sp V P11 80043
UH Comp Sp V P11 81647
(See NOTE 1)
UH Comp Sp IV P09 80055
UH Comp Sp IV P09 80061
UH Comp Sp IV P09 80907
UH Comp Sp IV P09 81202
UH Comp Sp IV P09 81549
UH Comp Sp IV P09 81727
UH Comp Sp IV P09 81870
UH Comp Sp III P07 80033
UH Comp Sp III P07 80056
UH Comp Sp III P07 81724
UH Comp Sp I P03 80909
UH Elec Tech I P06 81686
UH Comp Sp IV P09 81855(B)
UH Comp Sp III P07 81649(B)

Telecom Service Center
UH Aux/Fac Svc Ofcr IV P09 80040
UH Aux/Fac Svc Ofcr III P07 80827
UH Aux/Fac Svc Ofcr III P07 80917
UH Aux/Fac Svc Ofcr III P07 81231
Clerk IV SR10 11960
Tel Op III SR09 00781
Tel Op II SR07 12859

Telecom Operations
UH Elec Engr II P15 81737
UH Elec Tech II P09 80823
UH Elec Tech II P09 81990
UH Comp Sp IV P09 81598
UH Comp Sp III P07 81856(B)

Telecom Engineering
UH Elec Engr II P15 81631
UH Registered Engr I P13 81326
UH Elec Engr I P12 80070
UH Elec Engr I P12 81355

Systems Engineering
UH Sys Prog VI P13 80083
UH Sys Prog V P11 80077
UH Sys Prog V P11 81883
UH Sys Prog IV P09 80071
UH Sys Prog IV P09 81430
UH Sys Prog II P05 80218
UH Sys Prog I P03 80054
UH Comp Sp IV P09 81646
UH Comp Sp III P07 80911
UH Comp Sp III P07 81587

Systems Operations
UH Comp Sp V P11 80066
UH Comp Sp III P07 80016
UH Comp Sp II P05 81625
Comp Op Supv II SR23 26650
Comp Op Supv I SR19 21533
Comp Oper II SR15 11870
Comp Oper II SR15 26466
Comp Oper II SR15 26467
Comp Oper II SR15 36574
Comp Op Supv I SR19 14823
Comp Oper II SR15 26464
Comp Oper II SR15 30962
Comp Oper II SR15 36753
Comp Op Supv I SR19 11869
Comp Oper II SR15 26459
Comp Oper II SR15 26463
Key Eq Supv I SR12 00749
Key Eq Op I SR08 15499(B)

CHART UPDATED
DATE JUL - 1 2000

NOTE 1: These staff may report to any of the above supervisors on a project and/or rotational basis based on changing institutional priorities and requirements and shifting work assignments.

*positions to be redescribed

General Funds 112.00
(B) Special Funds 4.00

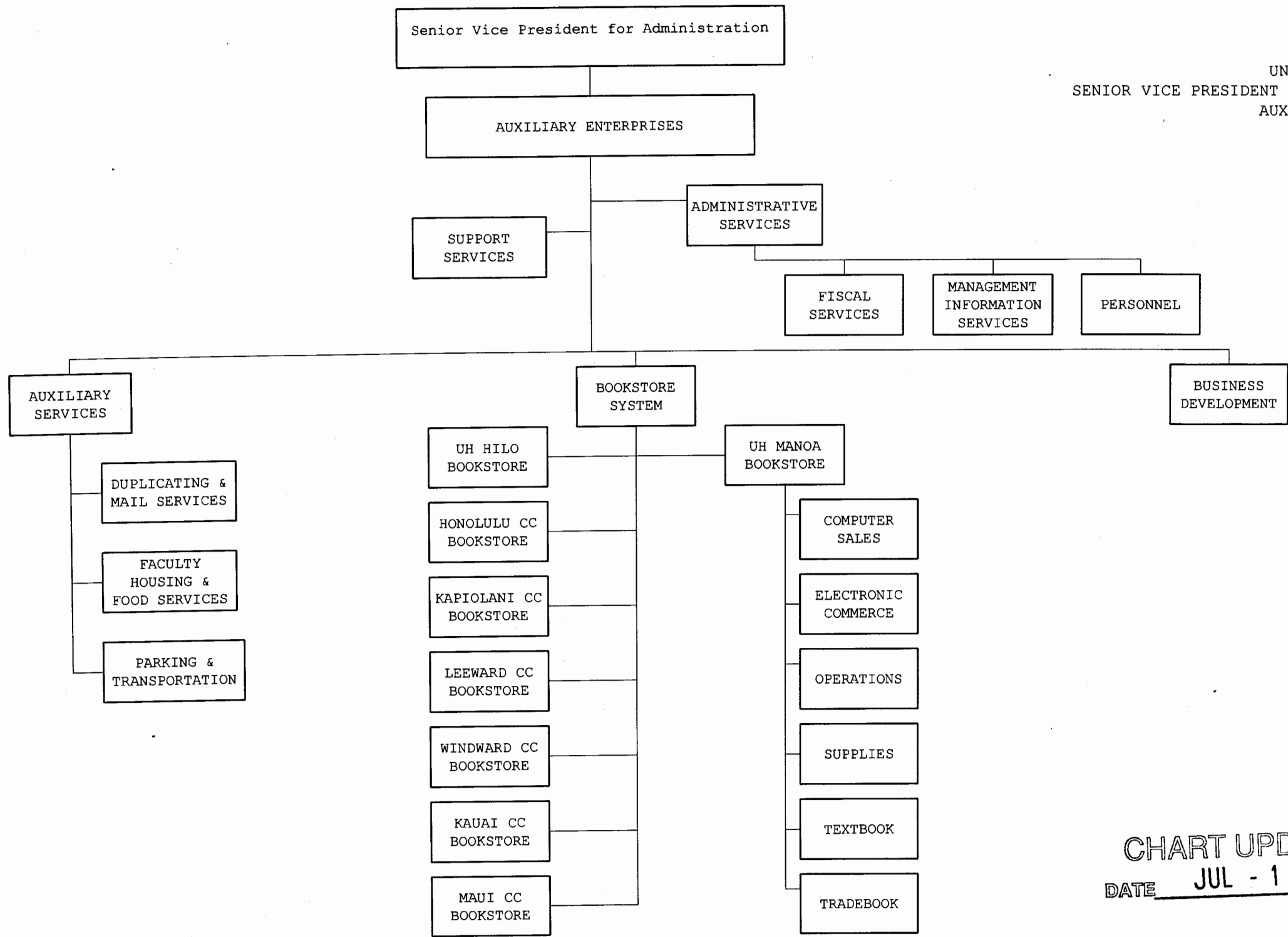


CHART UPDATED
DATE JUL - 1 2000

STATE OF HAWAII
UNIVERSITY OF HAWAII
SENIOR VICE PRESIDENT FOR ADMINISTRATION
AUXILIARY ENTERPRISES
Chart V2

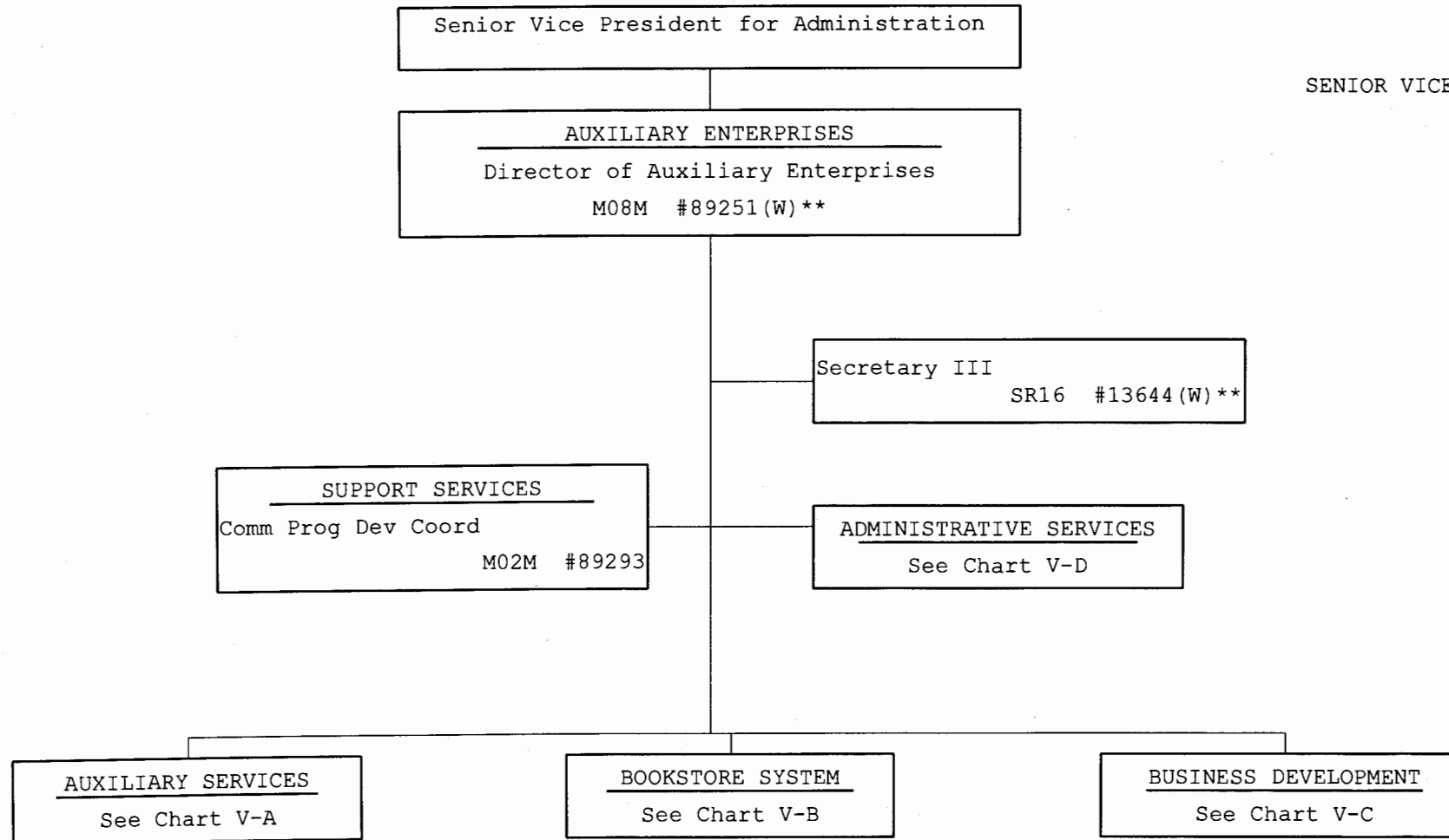
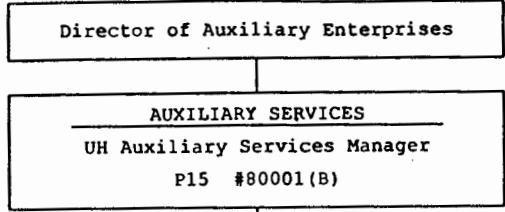


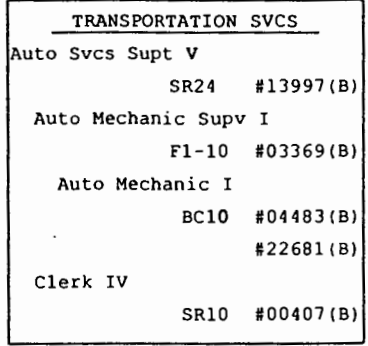
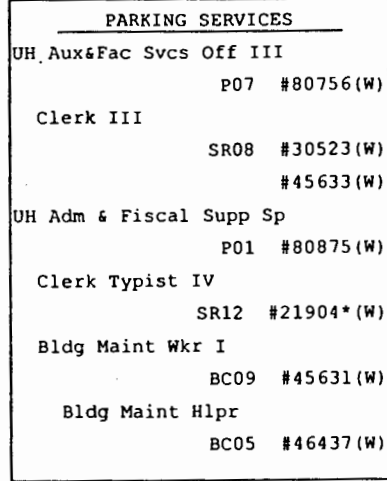
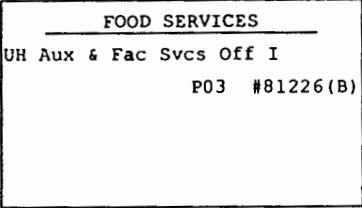
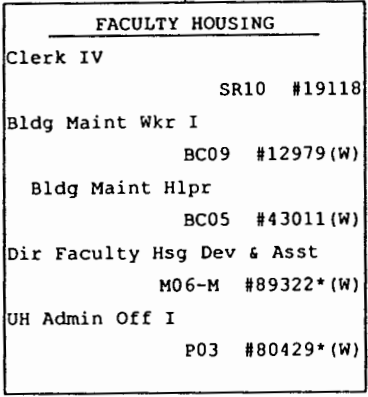
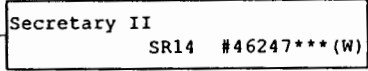
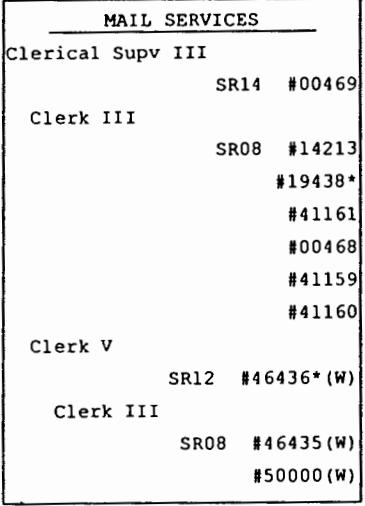
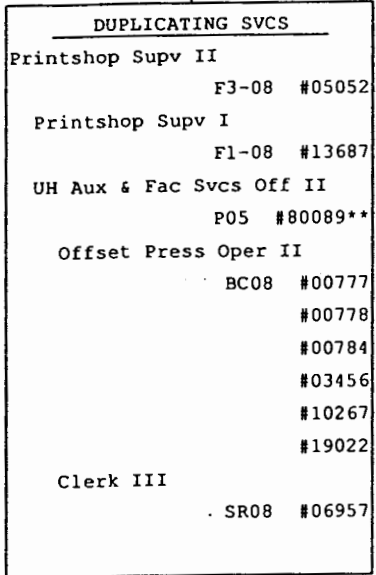
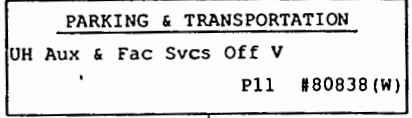
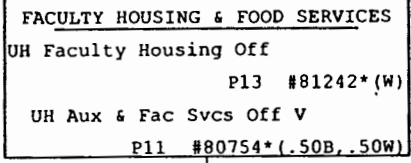
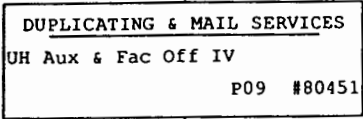
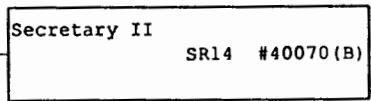
CHART UPDATED
DATE JUL - 1 2000

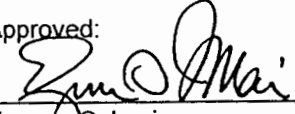
General Funds = 1.00, Revolving Funds(W) = 2.00

**Funding source to be changed



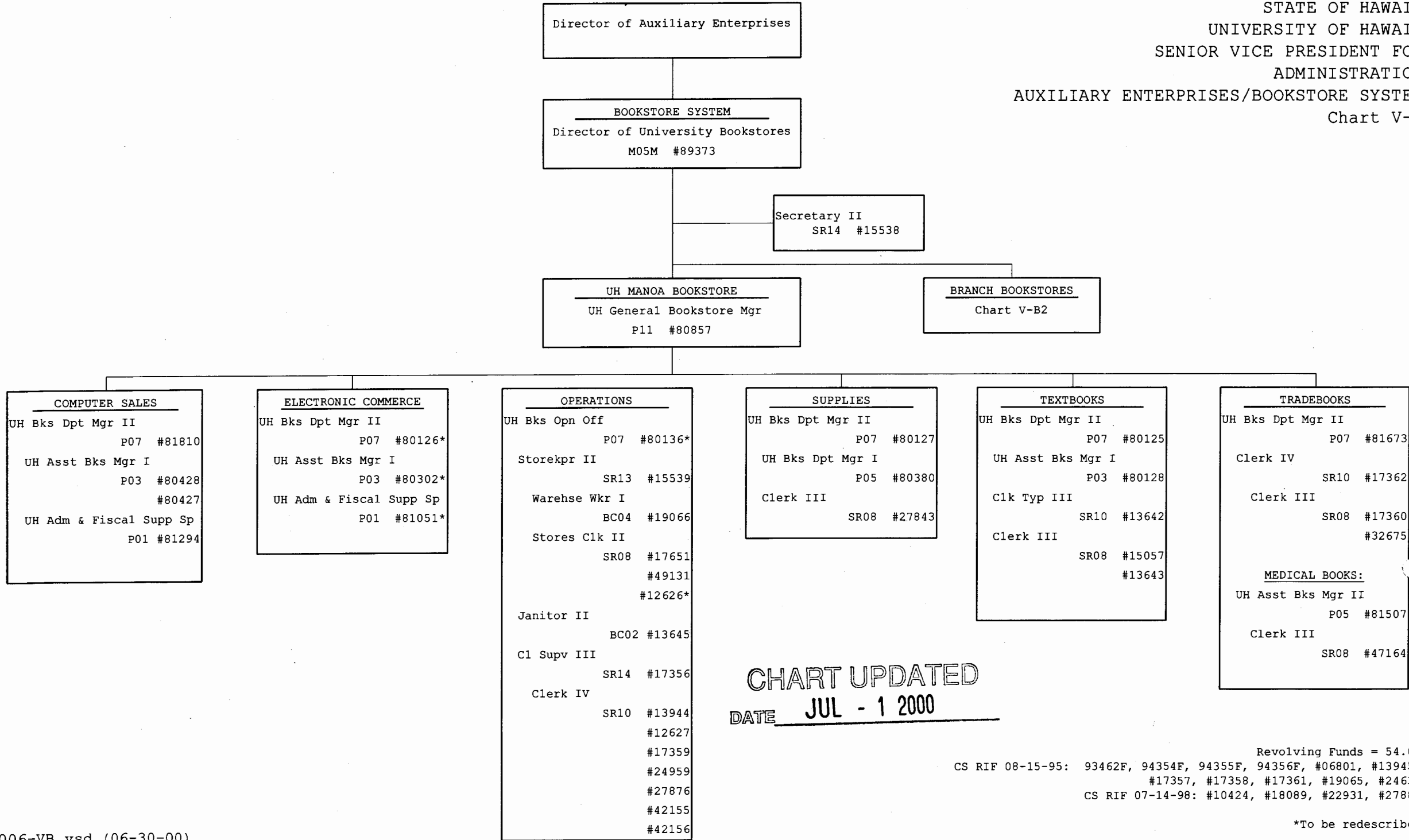
STATE OF HAWAII
UNIVERSITY OF HAWAII
SENIOR VICE PRESIDENT FOR ADMINISTRATION
AUXILIARY ENTERPRISES/AUXILIARY SERVICES
Chart V-A



Approved: 
Eugene S. Imai
Senior Vice President for Administration
Date: AUG 21 2000

General Funds = 19.00, Revolving Funds(W) = 18.50, Special Funds(B) = 9.50
Pending establishment: #98504F(B)
CS RIF 08-15-95: #49177(W)
*To be redescribed
**Position transferred from PBRC, to be redescribed
***Reports to Position #81242, to be redescribed

STATE OF HAWAII
UNIVERSITY OF HAWAII
SENIOR VICE PRESIDENT FOR
ADMINISTRATION
AUXILIARY ENTERPRISES/BOOKSTORE SYSTEM
Chart V-B



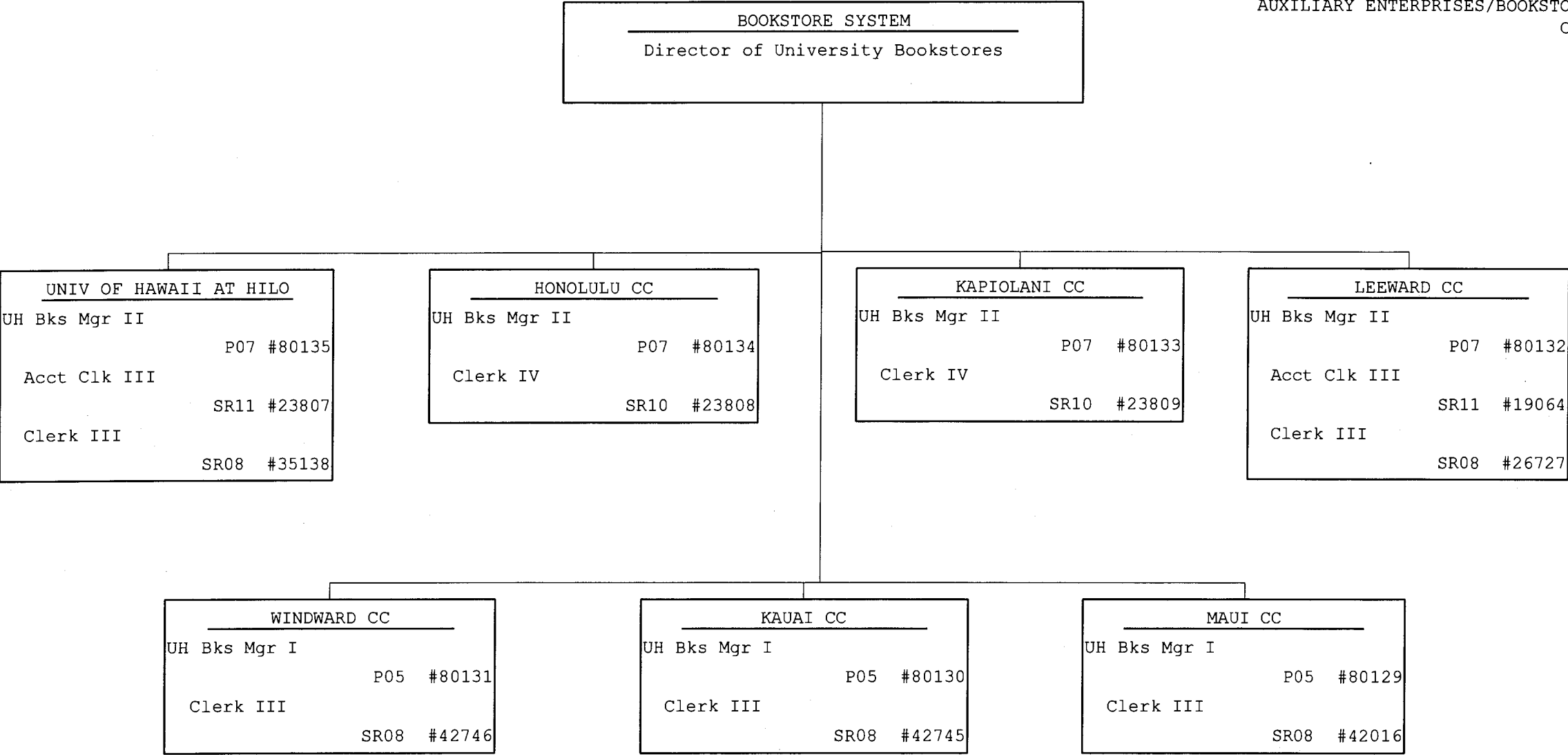


CHART UPDATED
DATE JUL - 1 2000

STATE OF HAWAII
UNIVERSITY OF HAWAII
SENIOR VICE PRESIDENT FOR ADMINISTRATION
AUXILIARY ENTERPRISES/BUSINESS DEVELOPMENT
Chart V-C

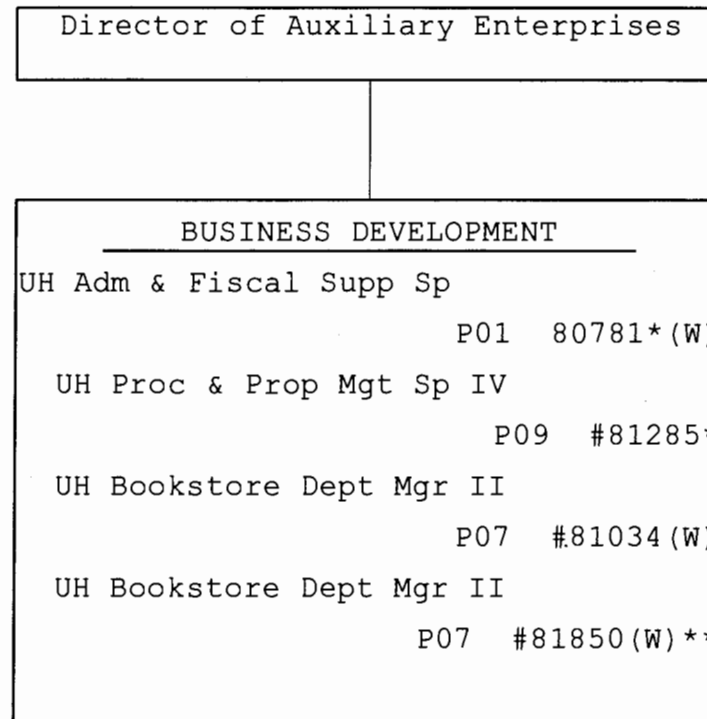


CHART UPDATED
DATE JUL - 1 2000

Director of Auxiliary Enterprises

ADMINISTRATIVE SERVICES

UH Fiscal Acc Sp II

P05 #80395*(W)**

Clerk III

SR08 #43822*(B)

STATE OF HAWAII
UNIVERSITY OF HAWAII
SENIOR VICE PRESIDENT FOR ADMINISTRATION
AUXILIARY ENTERPRISES/ADMINISTRATIVE SERVICES
Chart V-D

FISCAL SERVICES

Financial Information & Analysis:

UH Admin Off IV

P09 #81505*

UH Fiscal Acc Sp II

P05 #80276*(.50B,.50W)**

Acct Clk V

SR15 #17652*(W)**

Acct Clk IV

SR13 #14867*(W)**

Accounts Payable:

Acct Clk IV

SR13 #15948*

Clerk IV

SR10 #16833*(W)**

Account Clerk II

SR08 #10425*(W)**

#35072*(W)**

Clerk III

SR08 #14988*(W)**

Accounts Receivable:

Acct Clerk III

SR11 #15593*(B)

Acct Clerk III

SR11 #19070*(W)**

Account Clerk II

SR08 #17431*(B)

#48843*(B)

MANAGEMENT INFORMATION SERVICES

UH Comp Sp III

P07 #81378(W)**

UH Comp Sp I

P03 #81672(W)**

#80560(W)**

UH Adm & Fis Supp Sp

P01 #80683(W)**

PERSONNEL

UH Personnel Officer III

P07 #80204(W)**

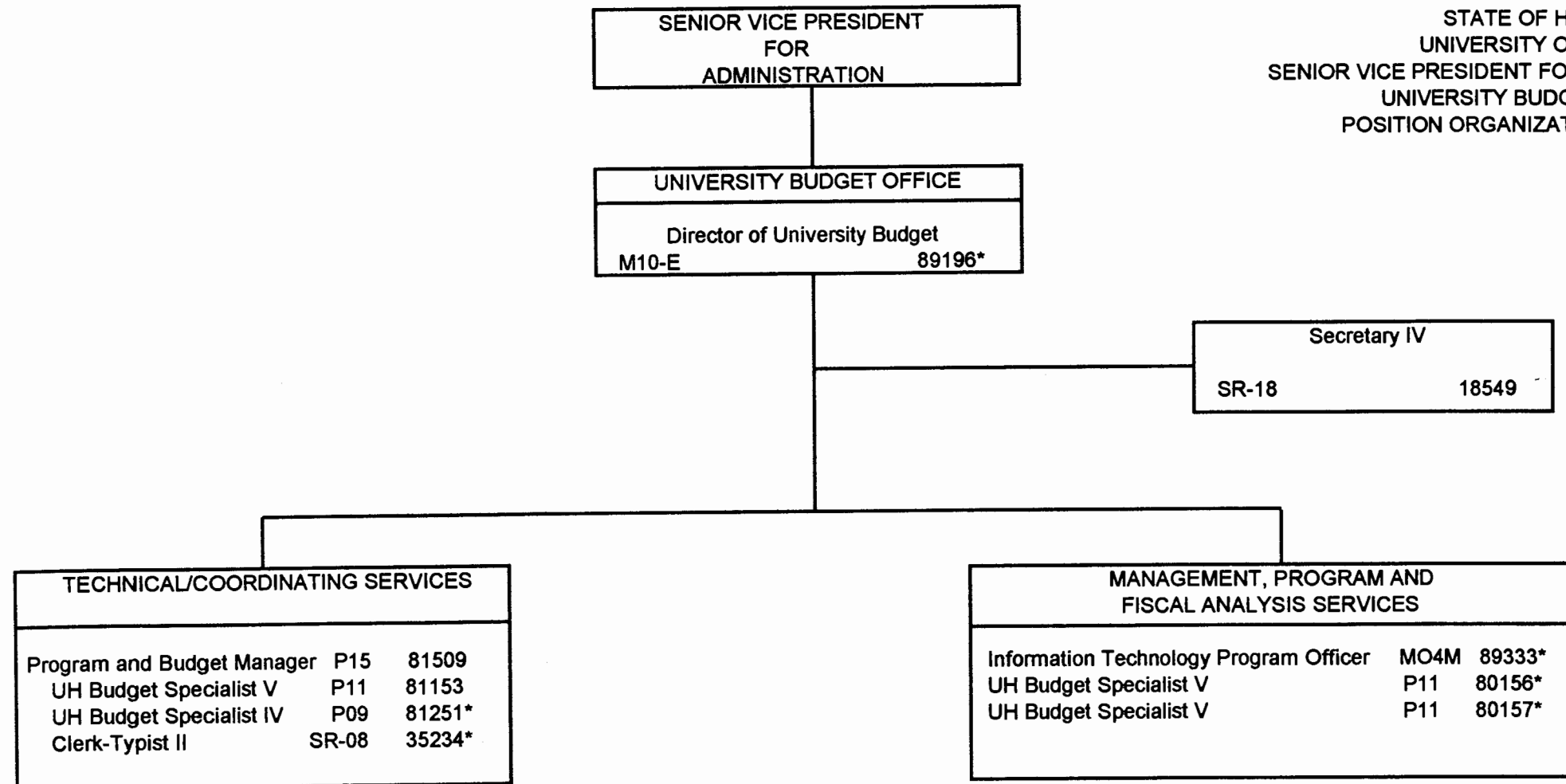
CHART UPDATED
DATE JUL - 1 2000

General Funds = 2.00, Revolving Funds(W) = 13.50, Special Funds (B) = 4.50

*To be redescribed

**Funding source to be changed

STATE OF HAWAII
UNIVERSITY OF HAWAII
SENIOR VICE PRESIDENT FOR ADMINISTRATION
UNIVERSITY BUDGET OFFICE
POSITION ORGANIZATION CHART VI



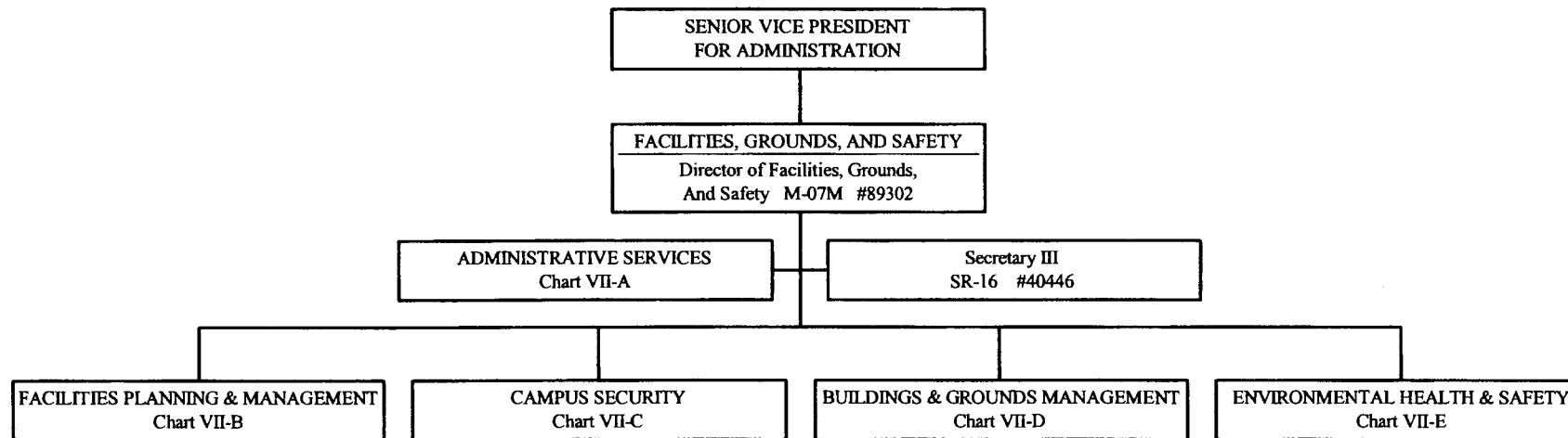
* To be redescribed

budnew2.xls

CHART UPDATED
DATE FEB 02 2001

General Funds 9.00

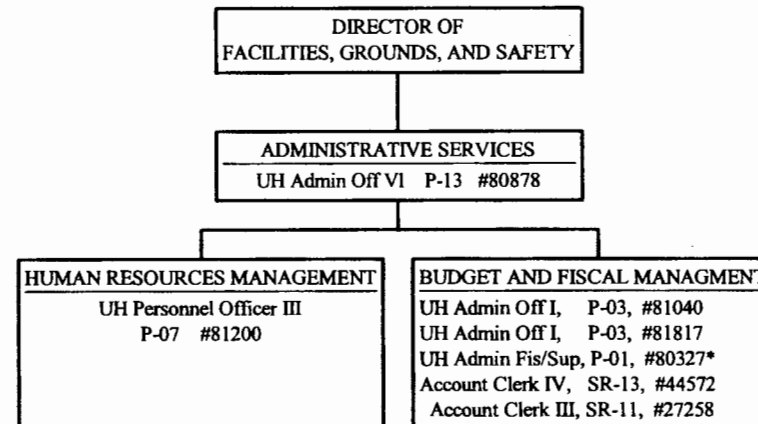
STATE OF HAWAII
UNIVERSITY OF HAWAII
UNIVERSITY OF HAWAII AT MANOA
SENIOR VICE PRESIDENT FOR ADMINISTRATION
FACILITIES, GROUNDS, AND SAFETY
CHART VII



REPLACE
FACIL. PLANNING

CHART UPDATED
DATE JUL - 1 2000

STATE OF HAWAII
 UNIVERSITY OF HAWAII
 UNIVERSITY OF HAWAII AT MANOA
 SENIOR VICE PRESIDENT FOR ADMINISTRATION
 FACILITIES, GROUNDS, AND SAFETY
 CHART VII-A



*To be redescribed

CHART UPDATED
 DATE JUL - 1 2000

Position Count: 7.00
 General Fund

STATE OF HAWAII
UNIVERSITY OF HAWAII
UNIVERSITY OF HAWAII AT MANOA
SENIOR VICE PRESIDENT FOR ADMINISTRATION
FACILITIES, GROUNDS, & SAFETY
FACILITIES PLANNING AND MGMT OFFICE
CHART VII-B

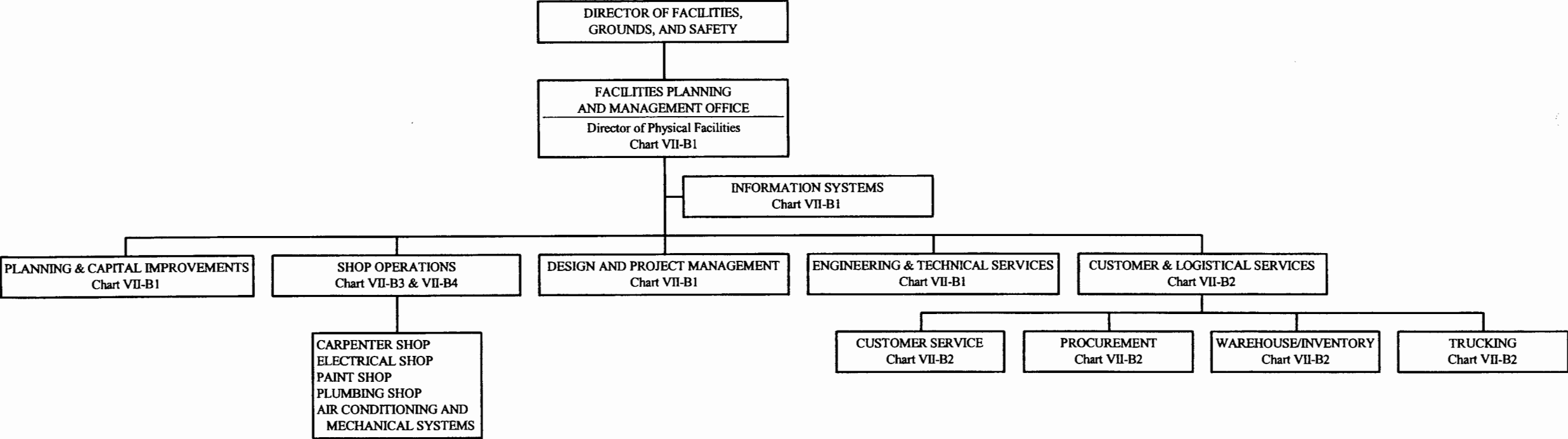
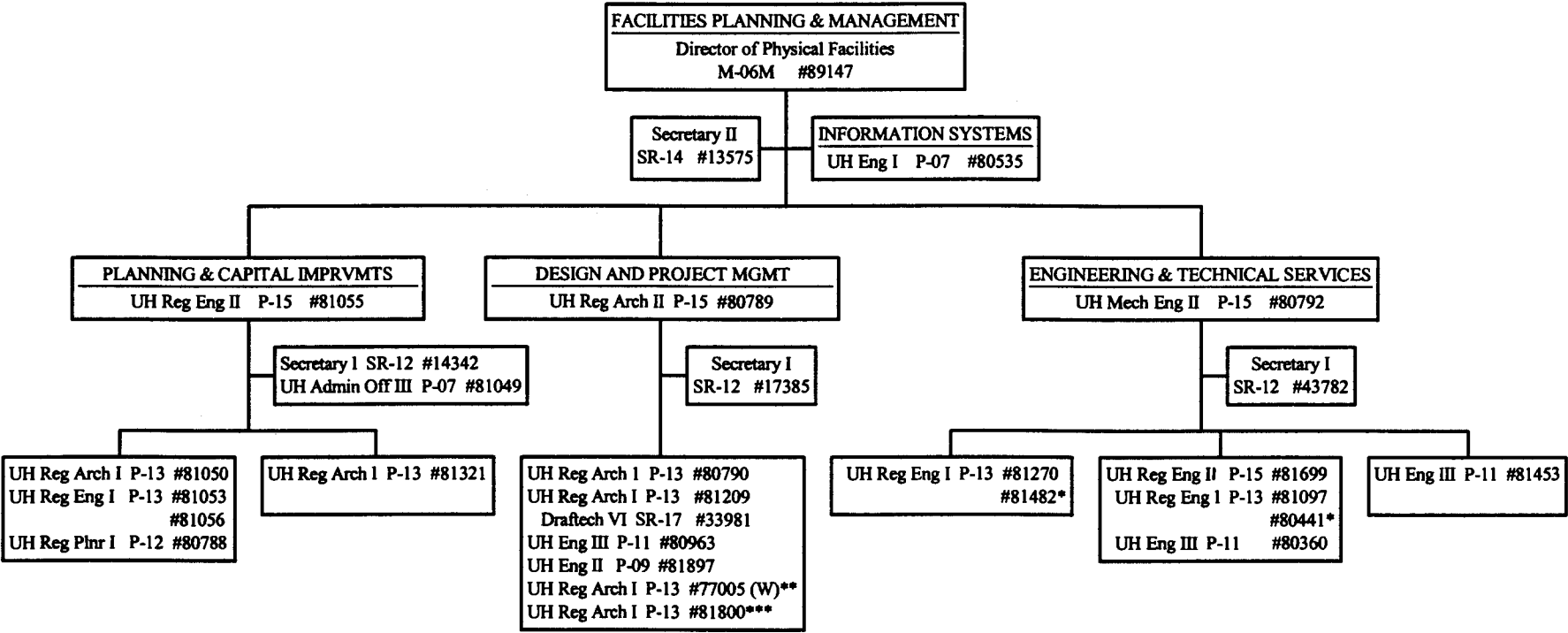


CHART UPDATED
DATE JUL - 1 2000

STATE OF HAWAII
UNIVERSITY OF HAWAII
UNIVERSITY OF HAWAII AT MANOA
SENIOR VICE PRESIDENT FOR ADMINISTRATION
FACILITIES, GROUNDS, AND SAFETY
FACILITIES PLANNING AND MGMT OFFICE
CHART VII-B1



*Pending establishment
#80441, UH Reg Eng I
#81482, UH Reg Eng I

CHART UPDATED
DATE JUL - 1 2000

General Funds 27.00
(W) Revolving Funds 1.00 (**Not
included in our position count, position
belongs to and funded by Student Hsg.)

***1.00 Not included in our position count,
position belongs to and funded by EEO.

STATE OF HAWAII
UNIVERSITY OF HAWAII
UNIVERSITY OF HAWAII AT MANOA
SENIOR VICE PRESIDENT FOR ADMINISTRATION
FACILITIES, GROUNDS, AND SAFETY
FACILITIES PLANNING AND MGMT OFFICE
CHART VII-B2

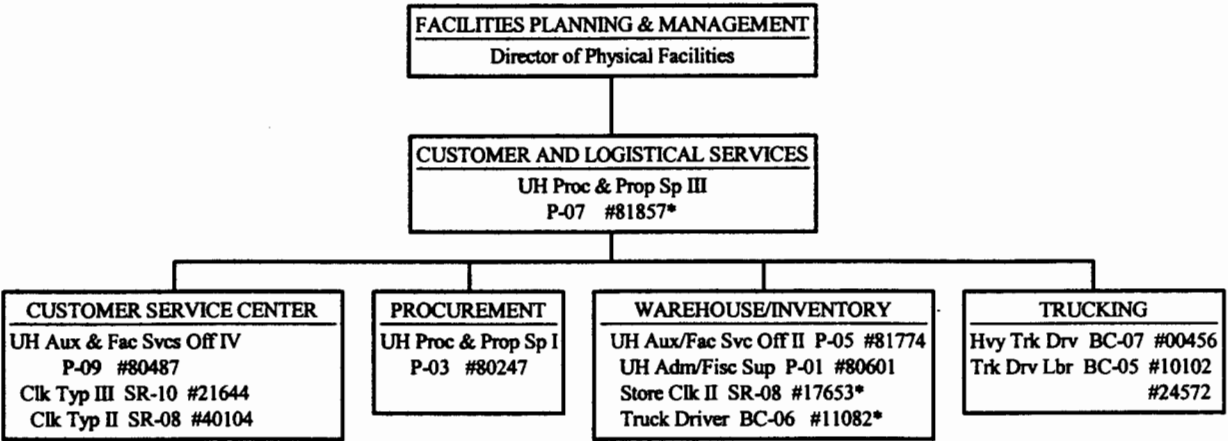
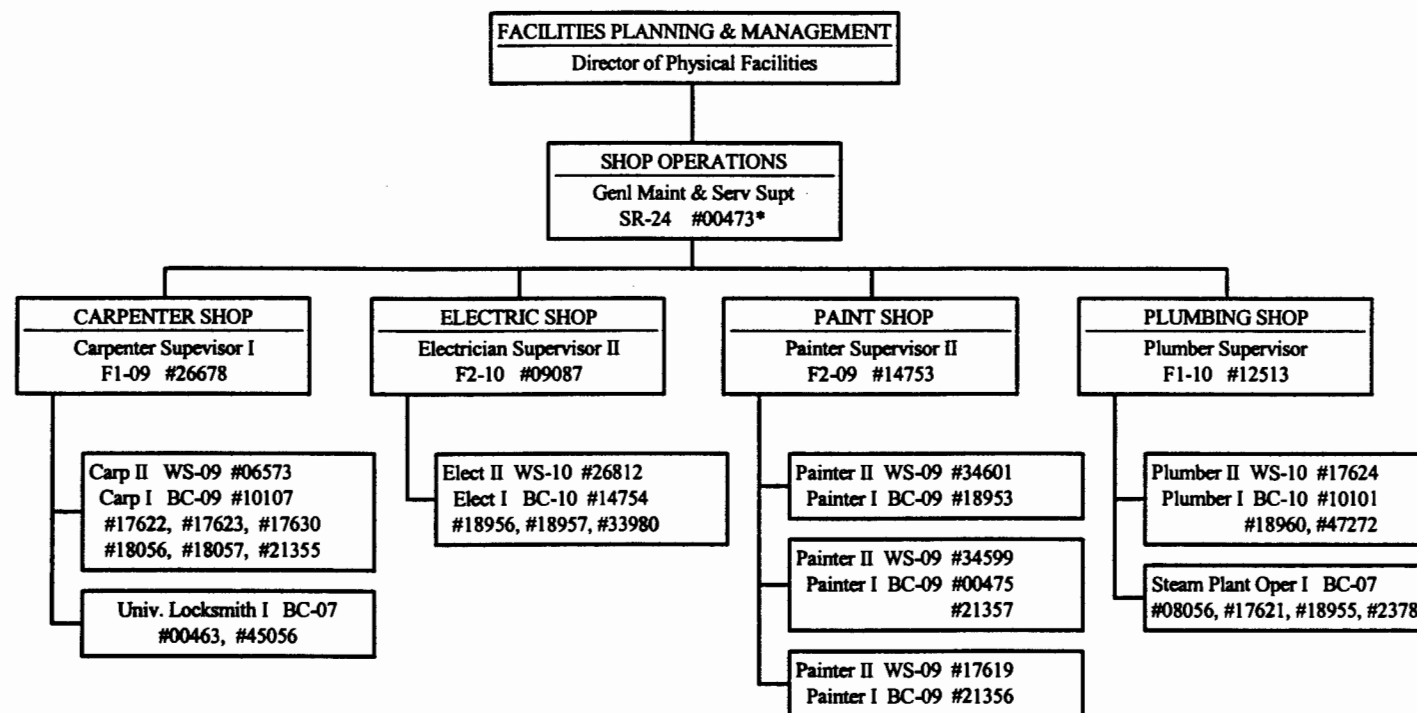


CHART UPDATED
JUL - 1 2000
DATE _____

*To be redescribed

STATE OF HAWAII
 UNIVERSITY OF HAWAII
 UNIVERSITY OF HAWAII AT MANOA
 SENIOR VICE PRESIDENT FOR ADMINISTRATION
 FACILITIES, GROUNDS, AND SAFETY
 FACILITIES PLANNING AND MGMT OFFICE
 CHART VII-B3



*To be redescribed

CHART UPDATED
 JUL - 1 2000
 DATE _____

General Funds 35.00

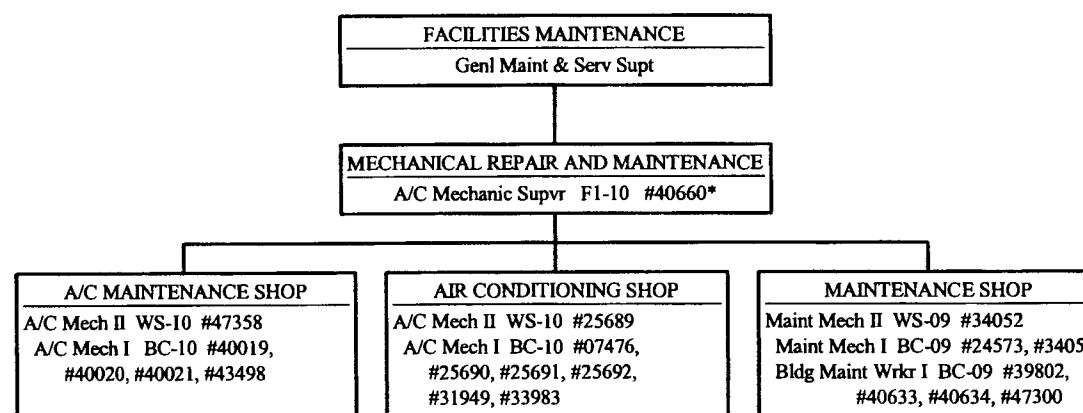


CHART UPDATED
DATE JUL - 1 2000

*To be redescribed

General Funds 20.00

STATE OF HAWAII
UNIVERSITY OF HAWAII
UNIVERSITY OF HAWAII AT MANOA
SENIOR VICE PRESIDENT FOR ADMINISTRATION
FACILITIES, GROUNDS, & SAFETY
CAMPUS SECURITY
CHART VII-C

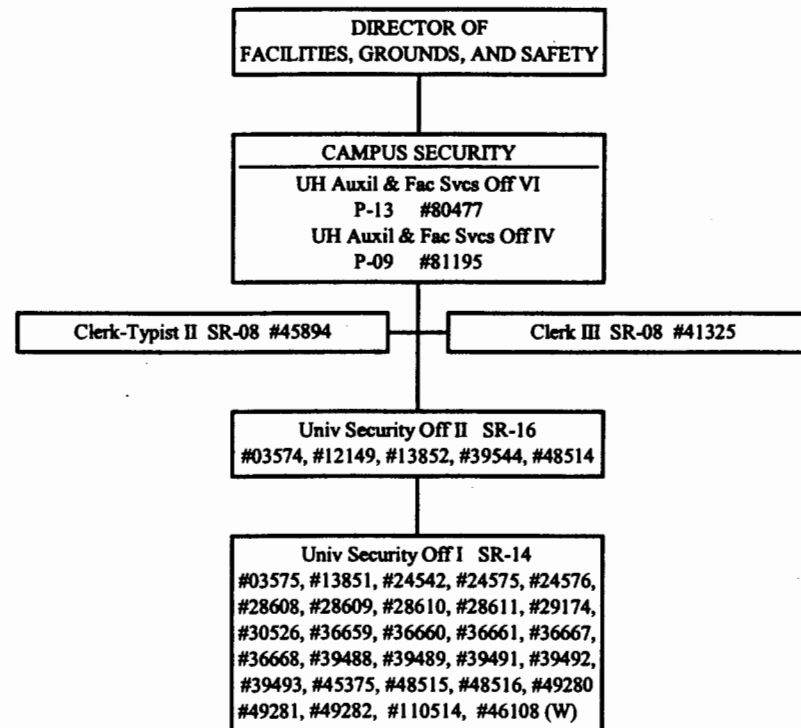


CHART UPDATED
DATE DEC 18 2000

General Funds 37.00
(W) Revolving Funds 1.00 (Not included in our
position count, this position belongs to Student Hsg)

STATE OF HAWAII
UNIVERSITY OF HAWAII
UNIVERSITY OF HAWAII AT MANOA
SENIOR VICE PRESIDENT FOR ADMINISTRATION
FACILITIES, GROUNDS, AND SAFETY
BUILDINGS & GROUNDS MANAGEMENT
CHART VII-D

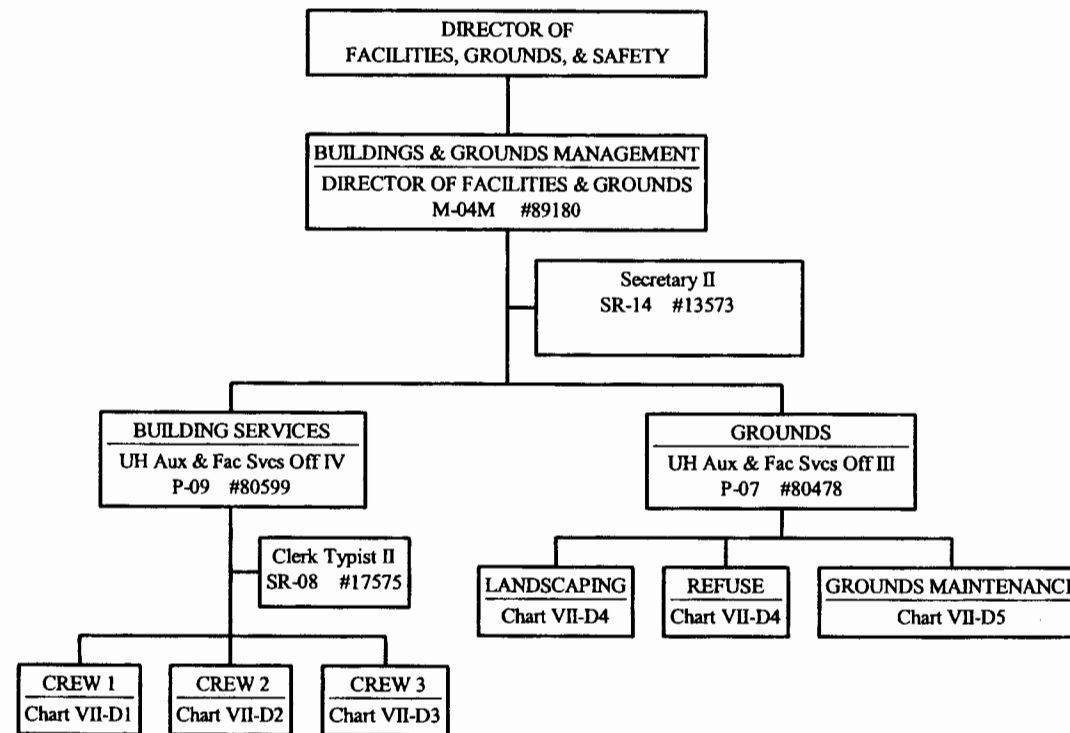


CHART UPDATED
JUL - 1 2000
DATE _____

General Funds 5.00

CREW I

STATE OF HAWAII
UNIVERSITY OF HAWAII
UNIVERSITY OF HAWAII AT MANOA
SENIOR VICE PRESIDENT FOR ADMINISTRATION
FACILITIES, GROUNDS, AND SAFETY
BUILDINGS & GROUNDS MANAGEMENT
CHART VII-D1

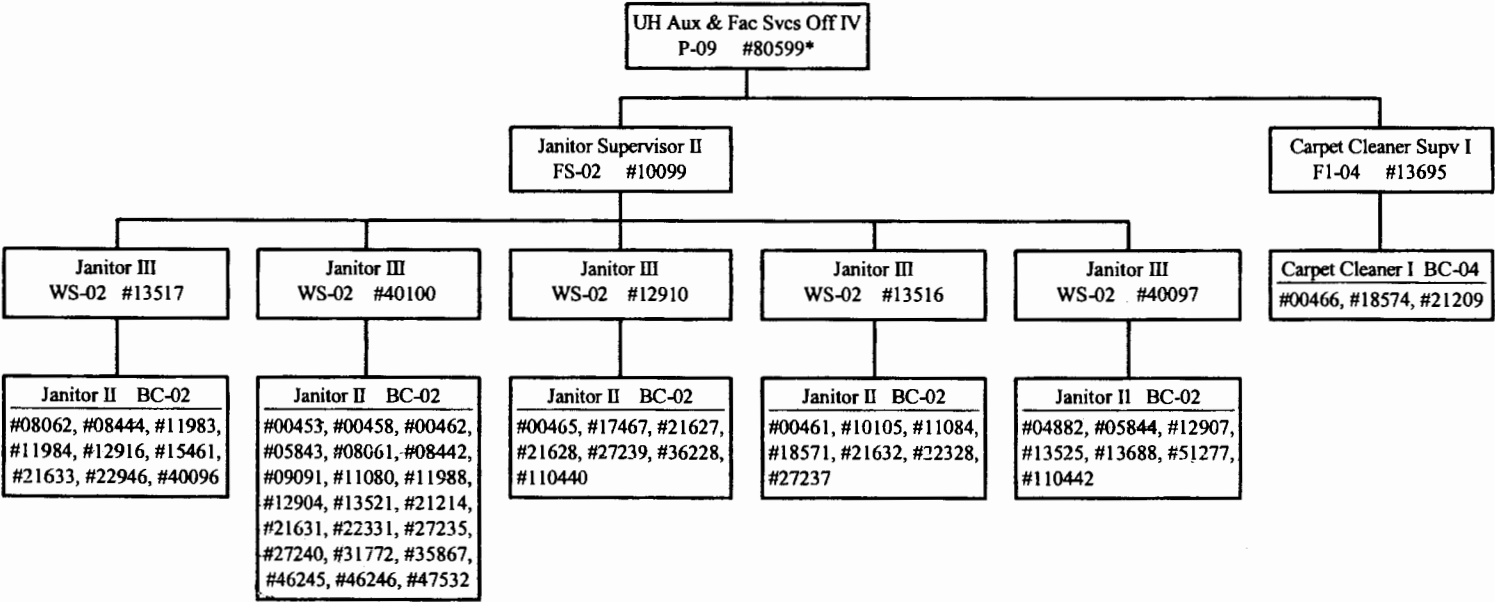


CHART UPDATED
DATE JUL - 1 2000

General Funds 61.00
(*Position count not included on
this page)

Crew 2

STATE OF HAWAII
UNIVERSITY OF HAWAII
UNIVERSITY OF HAWAII AT MANOA
SENIOR VICE PRESIDENT FOR ADMINISTRATION
FACILITIES, GROUNDS, AND SAFETY
BUILDINGS & GROUNDS MANAGEMENT
CHART VII-D2

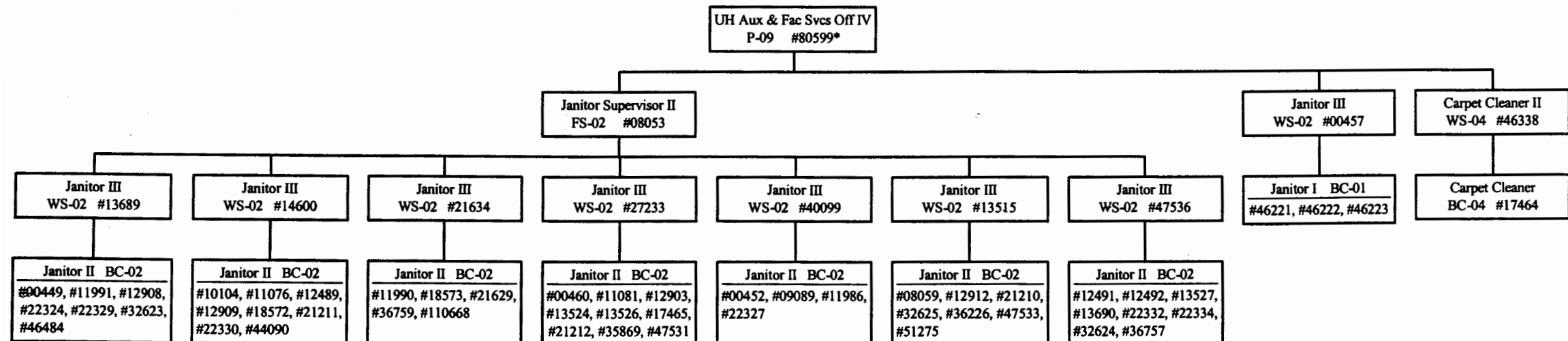


CHART UPDATED
DATE JUL - 1 2000

General Funds 62.00
(*Position count not included on this page)

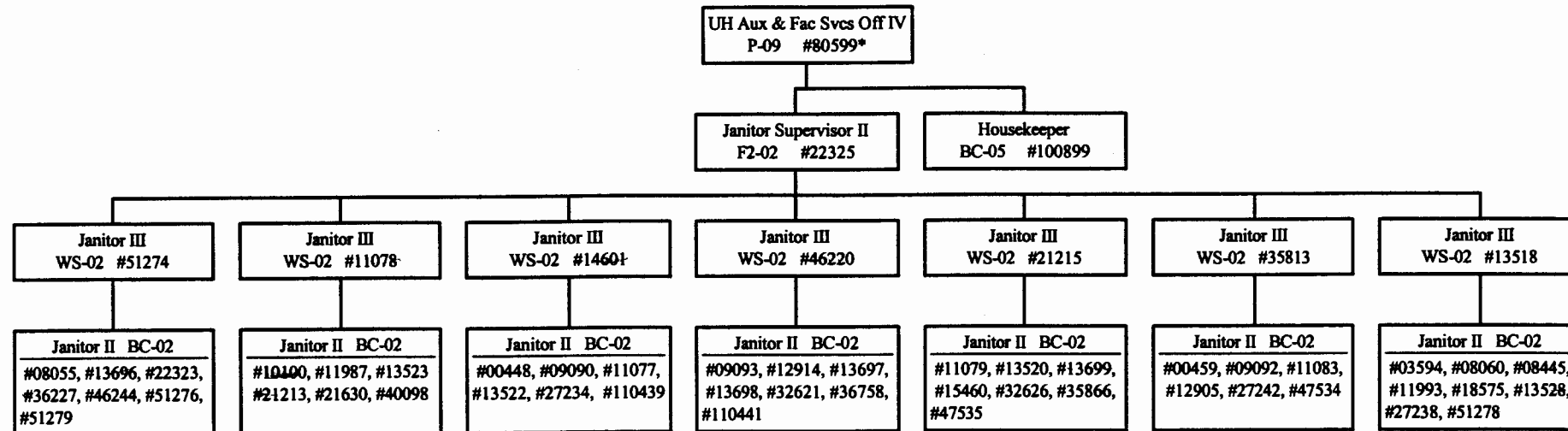


CHART UPDATED
DATE JUL - 1 2000

General Funds 56.00
(*Position count not included on this page)

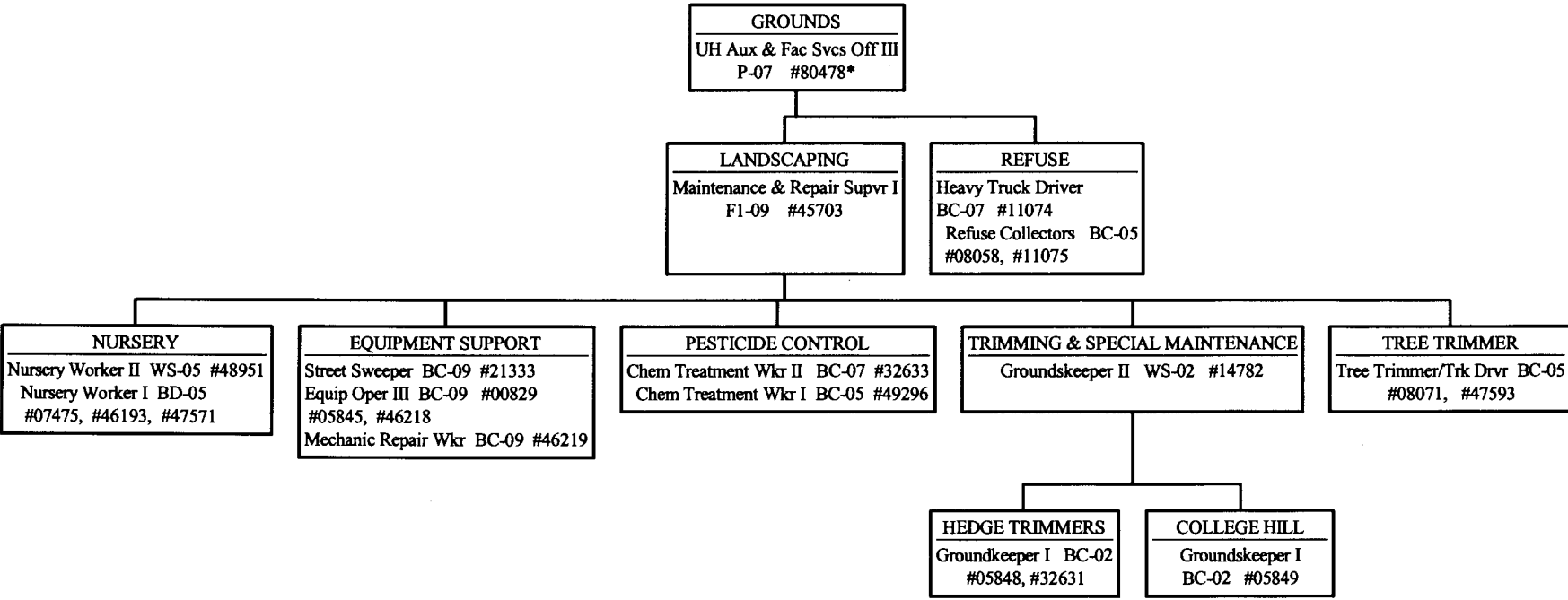


CHART UPDATED
JUL - 1 2000
DATE _____

General Funds 21.00
(* Position count not included on this page)

STATE OF HAWAII
 UNIVERSITY OF HAWAII
 UNIVERSITY OF HAWAII AT MANOA
 SENIOR VICE PRESIDENT FOR ADMINISTRATION
 FACILITIES, GROUNDS, & SAFETY
 BUILDINGS & GROUNDS MANAGEMENT
 CHART VII-D5

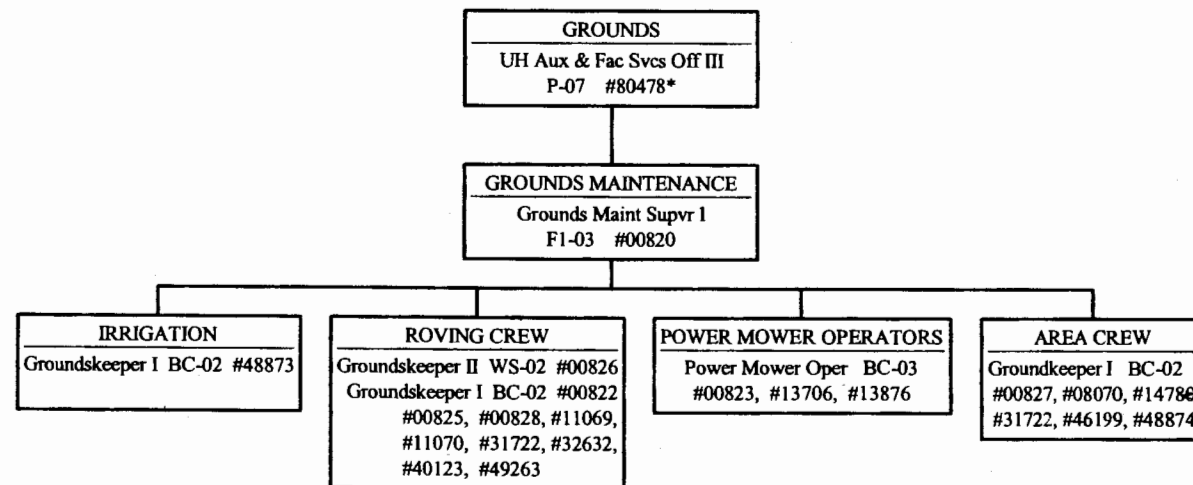


CHART UPDATED
 DATE JUL - 1 2000

General Funds 21.00
 (*Position count not included on this page)

STATE OF HAWAII
UNIVERSITY OF HAWAII
UNIVERSITY OF HAWAII AT MANOA
SENIOR VICE PRESIDENT FOR ADMINISTRATION
FACILITIES, GROUNDS, & SAFETY
ENVIRONMENTAL HEALTH & SAFETY OFFICE
CHART VII-E

Current

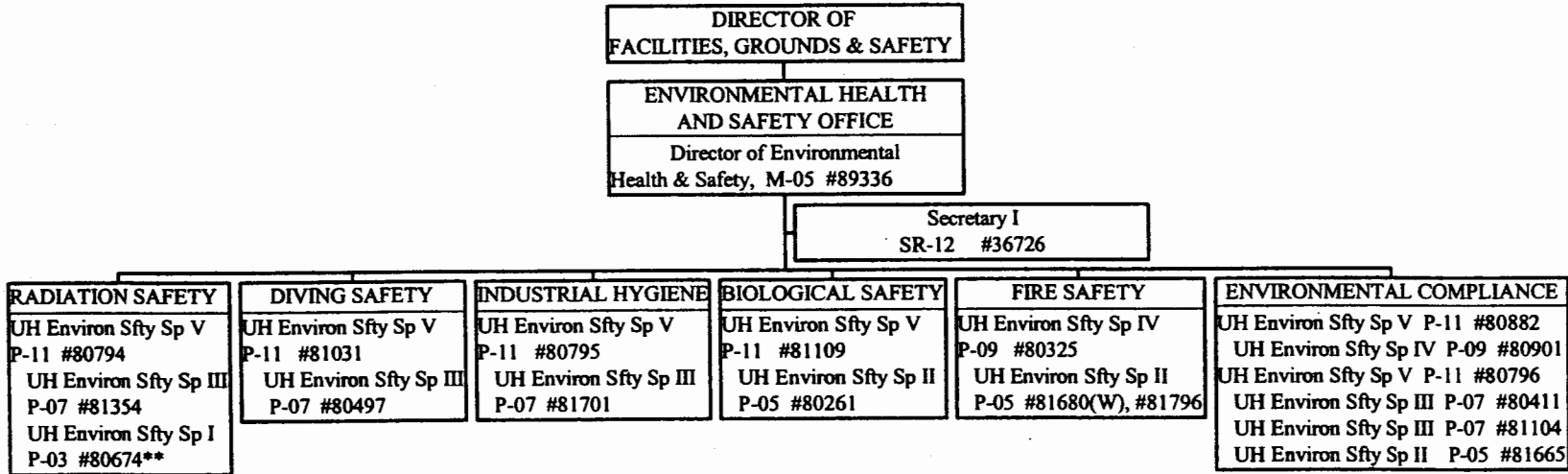
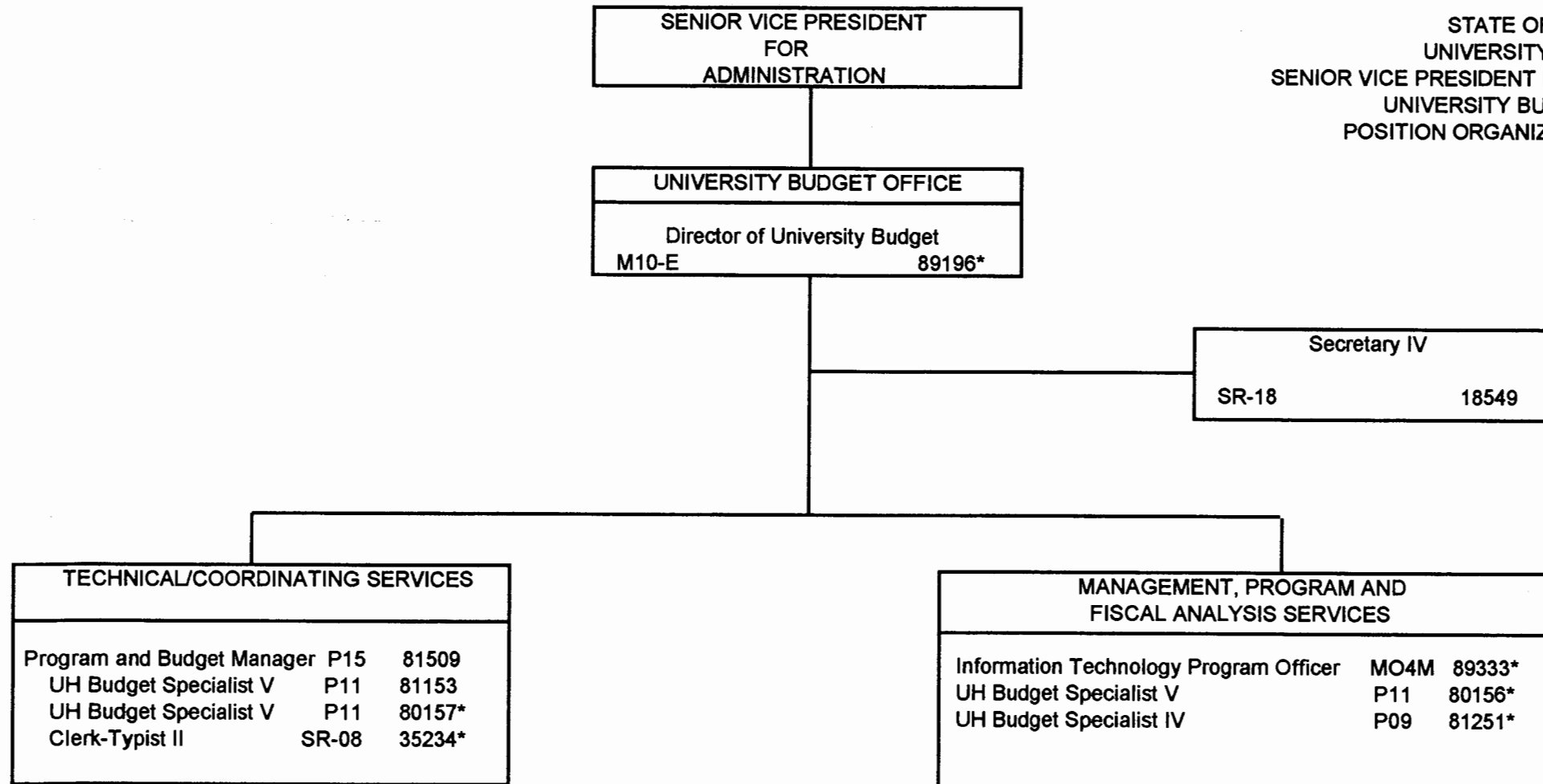


CHART UPDATED
DATE JUL - 1 2000

**Pending redescription

General Funds 19.00
(W) Revolving Funds 1.00 (Not
included in our position count,
position belongs to Student Hsg)

STATE OF HAWAII
UNIVERSITY OF HAWAII
SENIOR VICE PRESIDENT FOR ADMINISTRATION
UNIVERSITY BUDGET OFFICE
POSITION ORGANIZATION CHART VI



* To be redescribed

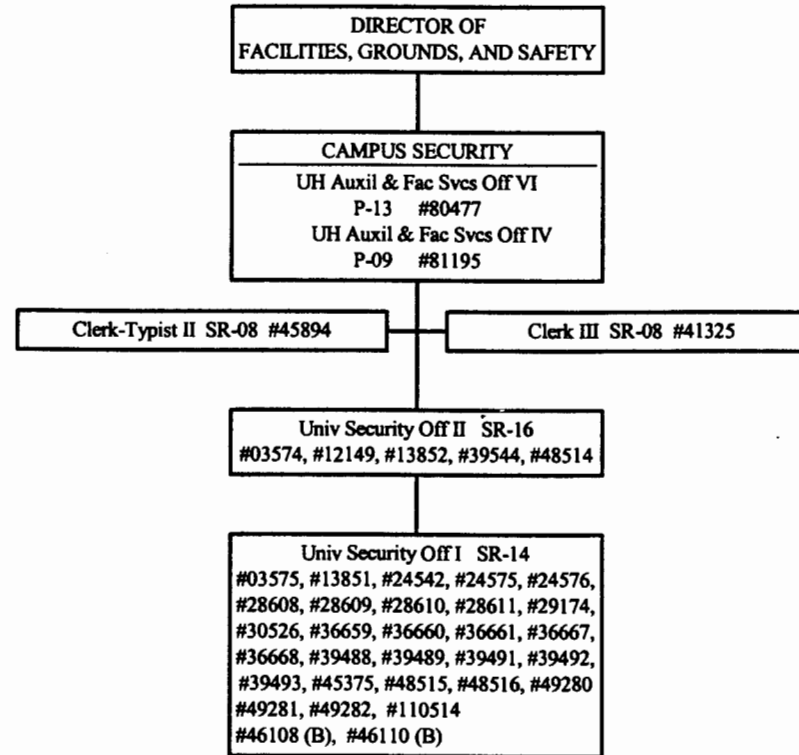
budnew2.xls

General Funds 9.00

CHART UPDATED
DATE JUL - 1 2000

SUPERSEDED
Date FEB 02 2001

STATE OF HAWAII
 UNIVERSITY OF HAWAII
 UNIVERSITY OF HAWAII AT MANOA
 SENIOR VICE PRESIDENT FOR ADMINISTRATION
 FACILITIES, GROUNDS, & SAFETY
 CAMPUS SECURITY
 CHART VII-C

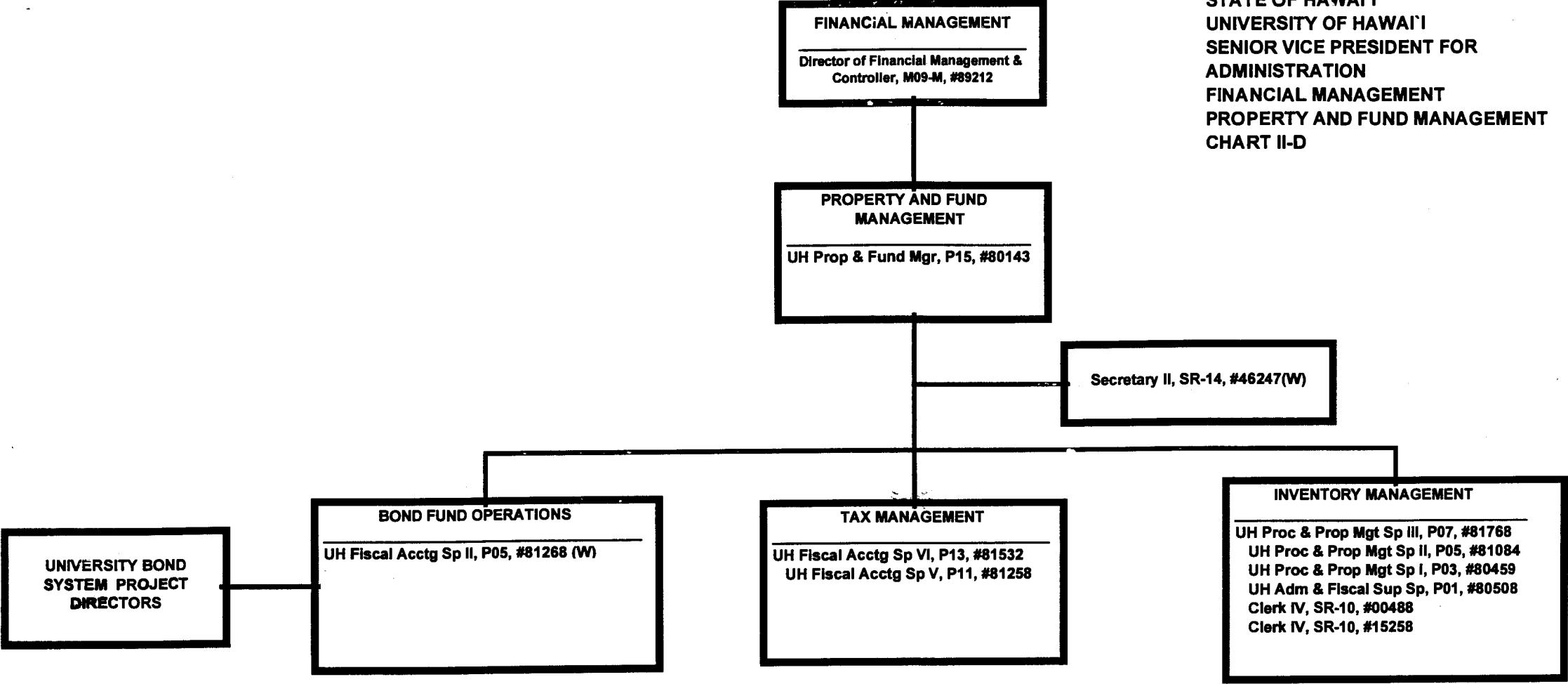


SUPERSEDED
 Date DEC 18 2000

CHART UPDATED
 DATE JUL - 1 2000

General Funds 37.00
 (B) Special Funds 2.00 (Not included in our
 position count, these position belong to Student Hsg.

STATE OF HAWAII
UNIVERSITY OF HAWAII
SENIOR VICE PRESIDENT FOR
ADMINISTRATION
FINANCIAL MANAGEMENT
PROPERTY AND FUND MANAGEMENT
CHART II-D



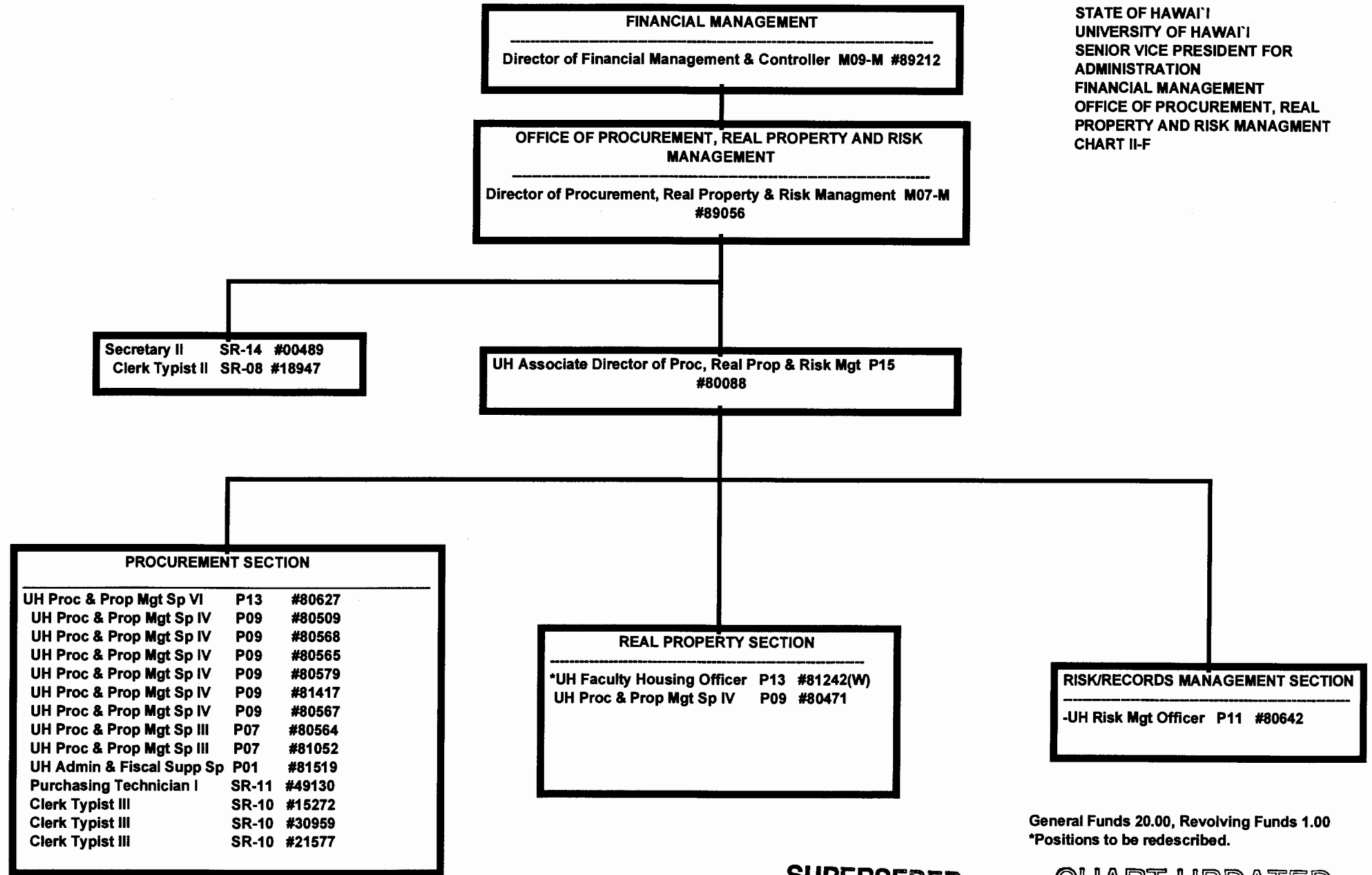
W = Revolving Funds

SUPERSEDED
Date AUG 21 2000

GENERAL FUNDS 9.00
REVOLVING FUNDS 2.00

CHART UPDATED
DATE JUL - 1 2000

STATE OF HAWAII
UNIVERSITY OF HAWAII
SENIOR VICE PRESIDENT FOR
ADMINISTRATION
FINANCIAL MANAGEMENT
OFFICE OF PROCUREMENT, REAL
PROPERTY AND RISK MANAGEMENT
CHART II-F



General Funds 20.00, Revolving Funds 1.00
*Positions to be redescribed.

SUPERSEDED
Date AUG 21 2000

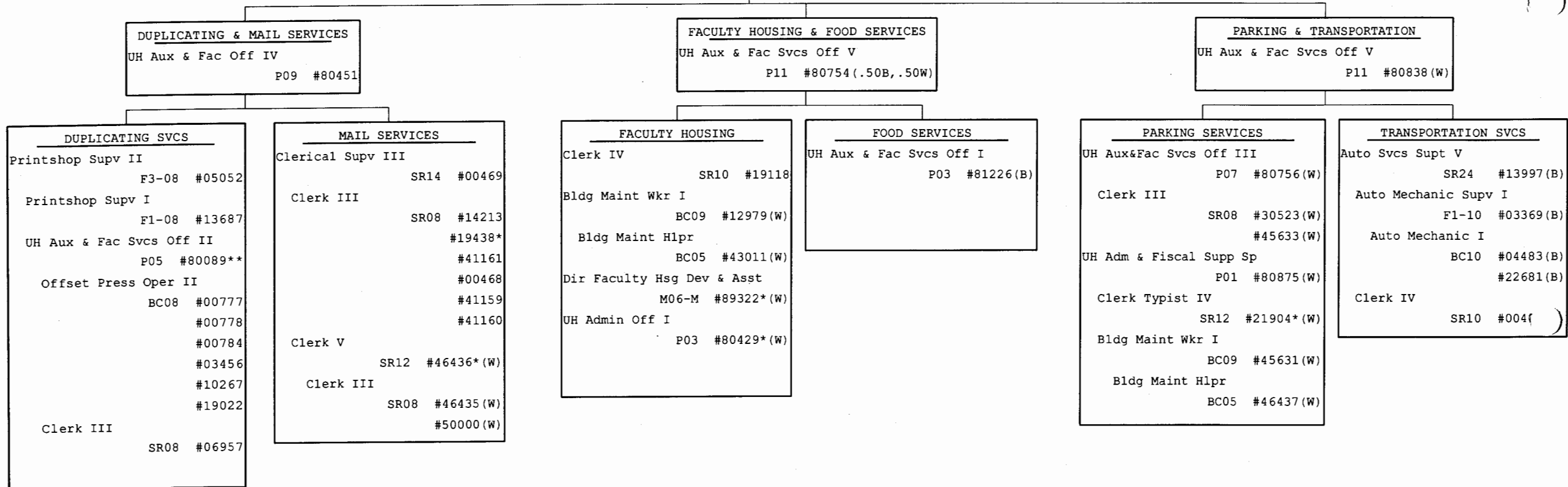
CHART UPDATED
DATE JUL - 1 2000

Director of Auxiliary Enterprises	
<u>AUXILIARY SERVICES</u>	
UH Auxiliary Services Manager	
P15 #80001(B)	

Director of Auxiliary Enterprises	
<u>AUXILIARY SERVICES</u>	
UH Auxiliary Services Manager	
P15 #80001(B)	

Secretary II
SR14 #40070 (B)

STATE OF HAWAII
UNIVERSITY OF HAWAII
SENIOR VICE PRESIDENT FOR ADMINISTRATION
AUXILIARY ENTERPRISES/AUXILIARY SERVICES
Chart V-A



SUPERSEDED
Date AUG 21 2000

CHART UPDATED
DATE JUL - 1 2000

General Funds = 19.00, Revolving Funds(W) = 16.50, Special Funds(B) = 9.50
Pending establishment: #98504F(B)
CS RIF 08-15-95: #49177(W)
*To be redescribed
**Position transferred from PBRC, to be redescribed