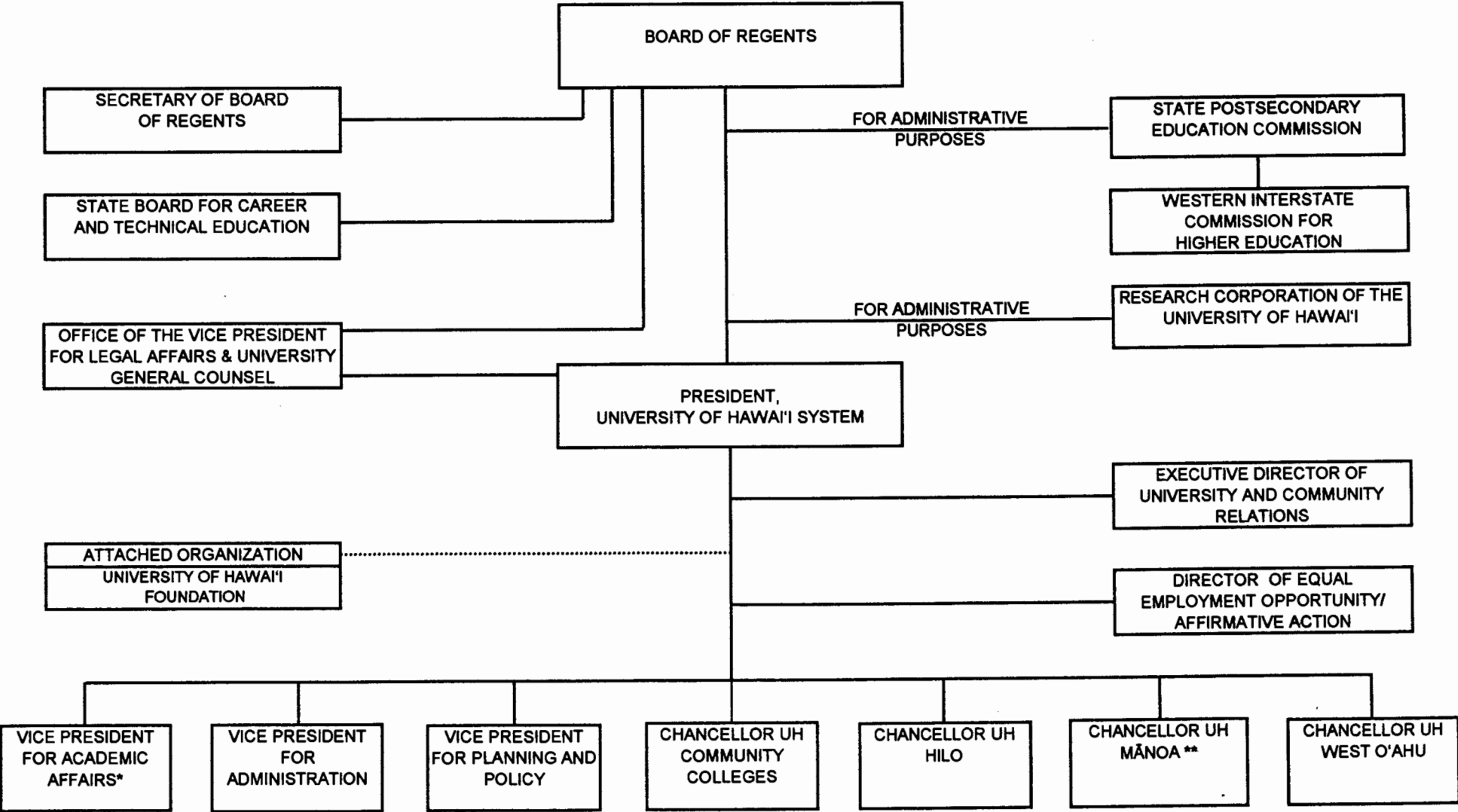


STATE OF HAWAII
UNIVERSITY OF HAWAII
SYSTEMWIDE ADMINISTRATION



*Position redescribed (formerly Senior Vice President and Executive Vice Chancellor, UH Mānoa).

**New position created.

sworgchartwk

APPROVED BY THE UNIVERSITY
BOARD OF REGENTS
JAN 19 2001
Date

STATE OF HAWAII
UNIVERSITY OF HAWAII ADMINISTRATION
ORGANIZATION CHART

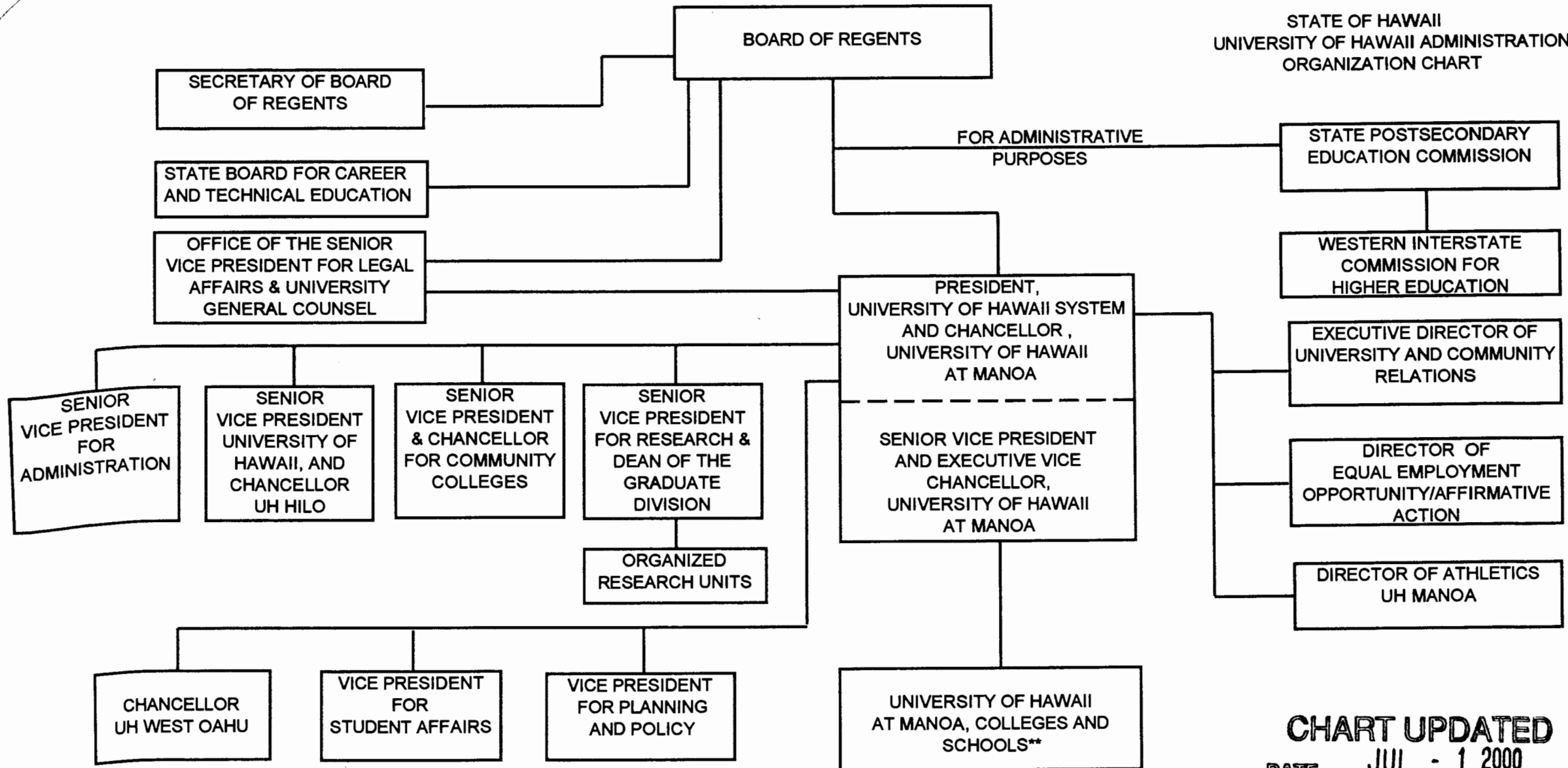


CHART UPDATED
DATE JUL - 1 2000

SUPERSEDED
Date JAN 19 2001

** College of Tropical Agriculture and Human Resources, School of Ocean and Earth Science and Technology, and School of Medicine report to Senior Vice President for Research and Dean of the Graduate Division

STATE OF HAWAII
UNIVERSITY OF HAWAII
STATE POSTSECONDARY EDUCATION COMMISSION
ORGANIZATION CHART

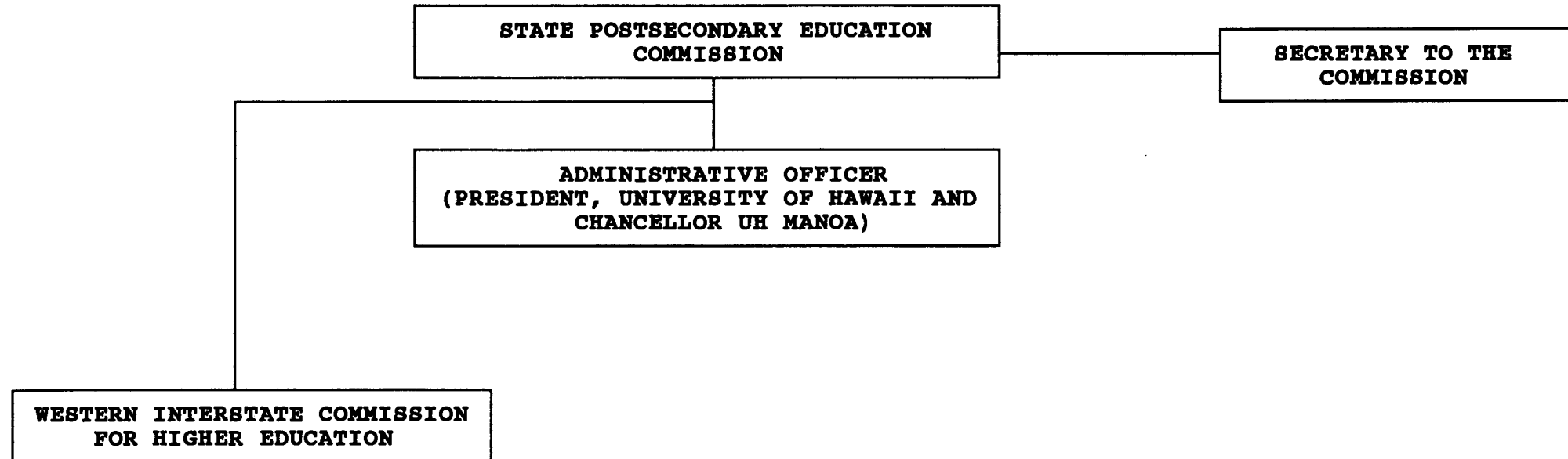
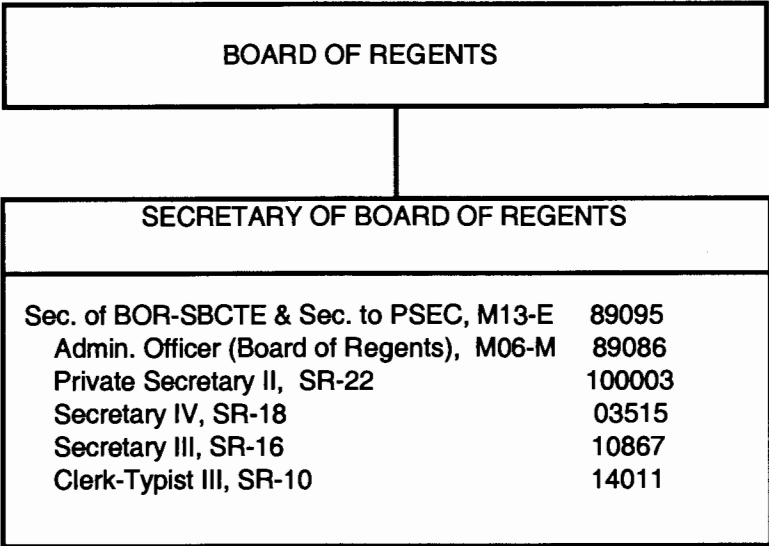


CHART UPDATED
DATE JUL - 1 2000

STATE OF HAWAII
UNIVERSITY OF HAWAII
STATEWIDE ADMINISTRATION
SECRETARY OF THE BOARD OF REGENTS

POSITION ORGANIZATION CHART



General Funds: 6.00

A:Borchart

CHART UPDATED
DATE JUL - 1 2000

STATE OF HAWAII
UNIVERSITY OF HAWAII ADMINISTRATION
OFFICE OF THE PRESIDENT, UH SYSTEM
AND CHANCELLOR, UH MANOA

POSITION ORGANIZATION CHART

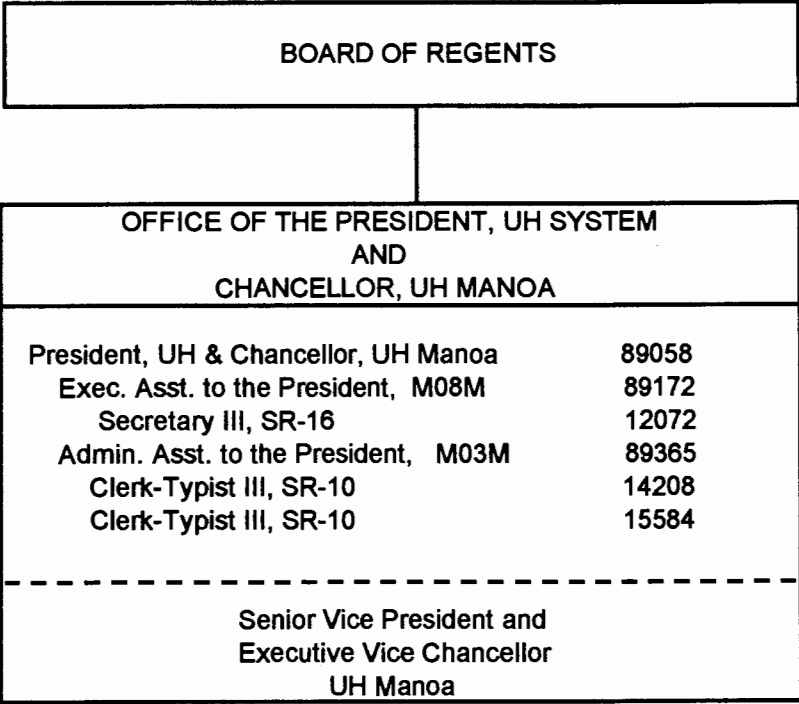


CHART UPDATED
JUL - 1 2000
DATE _____

STATE OF HAWAII
UNIVERSITY OF HAWAII
OFFICE OF EQUAL EMPLOYMENT OPPORTUNITY
& AFFIRMATIVE ACTION (MANOA)

POSITION ORGANIZATION CHART

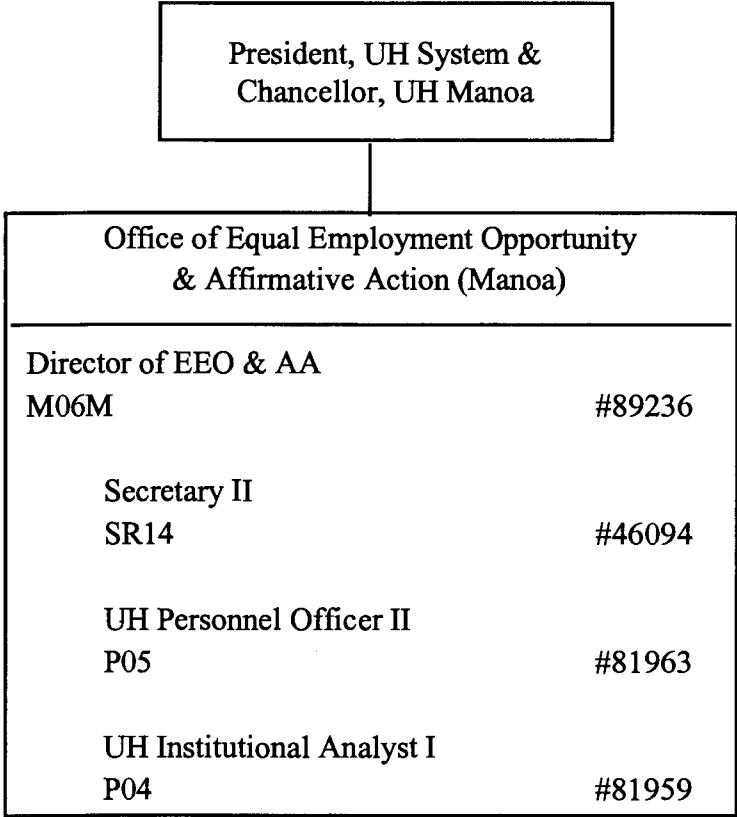


CHART UPDATED
DATE JUL - 1 2000

General Funds 4.00