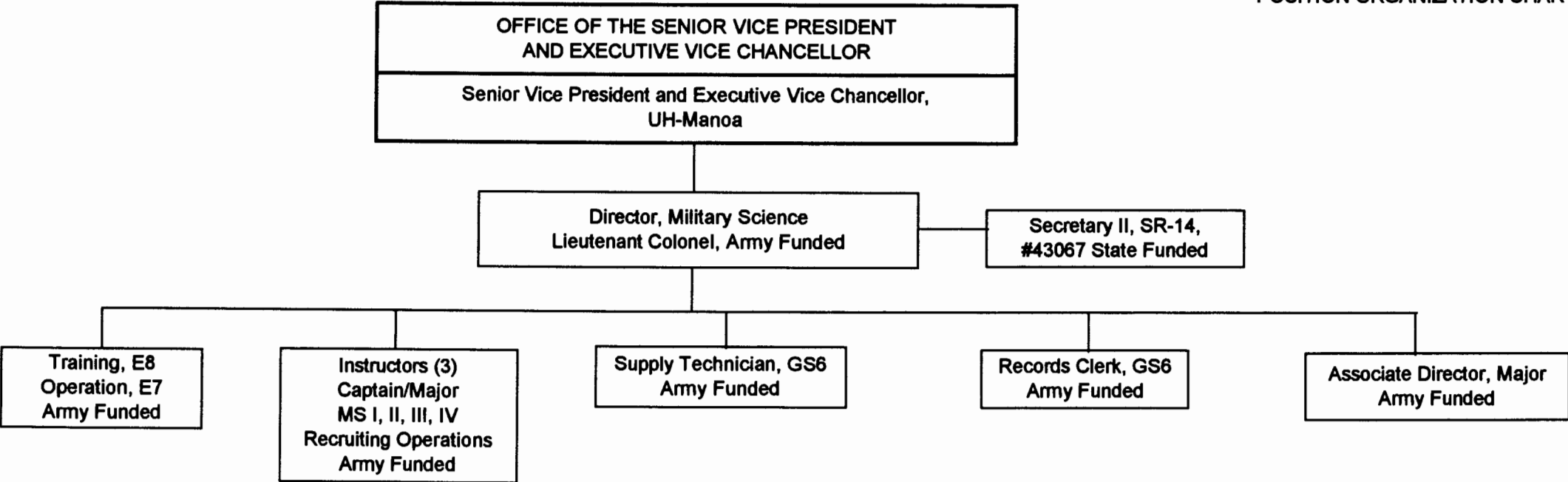


STATE OF HAWAII
UNIVERSITY OF HAWAII
UNIVERSITY OF HAWAII AT MANOA
OFFICE OF THE SENIOR VICE PRESIDENT
AND EXECUTIVE VICE CHANCELLOR
MILITARY SCIENCE

POSITION ORGANIZATION CHART VII



5 Officers
2 Noncommissioned Officers
2 Department of Army Civilians
1 State Employee

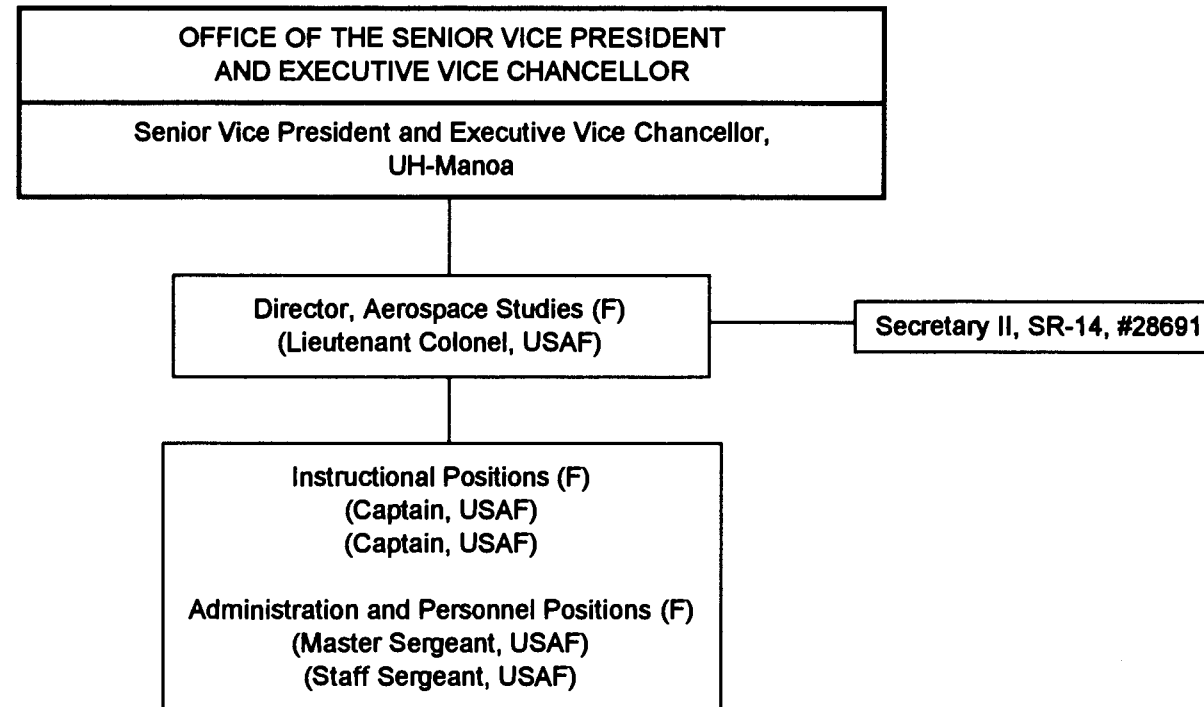
10 Total Personnel

CHART UPDATED
DATE JUL 3 1 2000

General Fund 1.00 FTE

UNIVERSITY OF HAWAII
UNIVERSITY OF HAWAII AT MANOA
OFFICE OF THE SENIOR VICE PRESIDENT
AND EXECUTIVE VICE CHANCELLOR
AEROSPACE STUDIES

POSITION ORGANIZATION CHART VIII



(F) Personnel funded by the United States Air Force

CHART UPDATED
DATE JUL 3 1 2000

General Fund 1.00 FTE