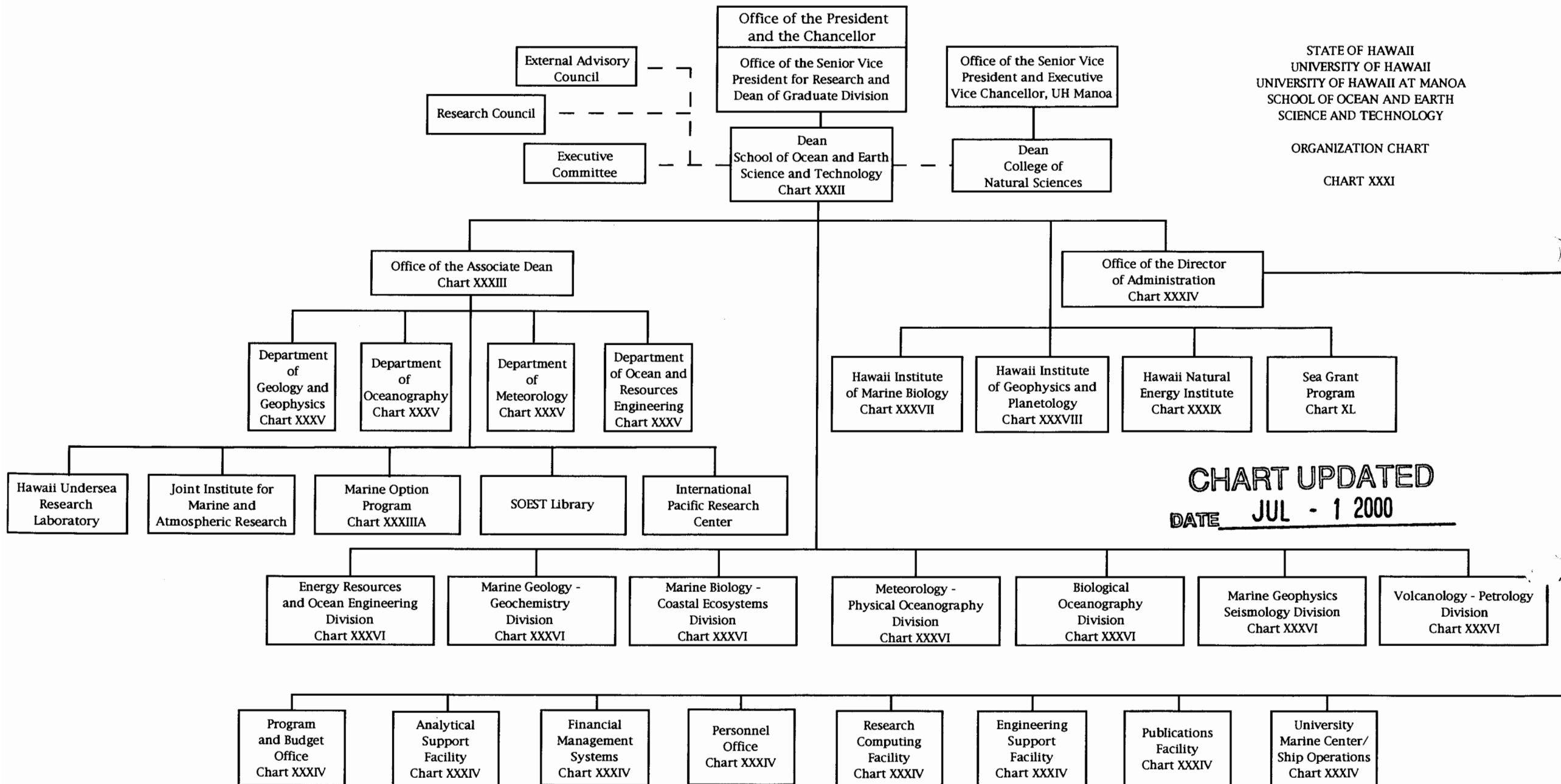


STATE OF HAWAII  
UNIVERSITY OF HAWAII  
UNIVERSITY OF HAWAII AT MANOA  
SCHOOL OF OCEAN AND EARTH  
SCIENCE AND TECHNOLOGY

ORGANIZATION CHART

CHART XXXI



APPROVED:

  
C. Barry Raleigh, Dean 07/01/2000

STATE OF HAWAII  
UNIVERSITY OF HAWAII  
UNIVERSITY OF HAWAII AT MANOA  
SCHOOL OF OCEAN AND EARTH  
SCIENCE AND TECHNOLOGY

OFFICE OF THE DEAN  
POSITION ORGANIZATION CHART

CHART XXXII

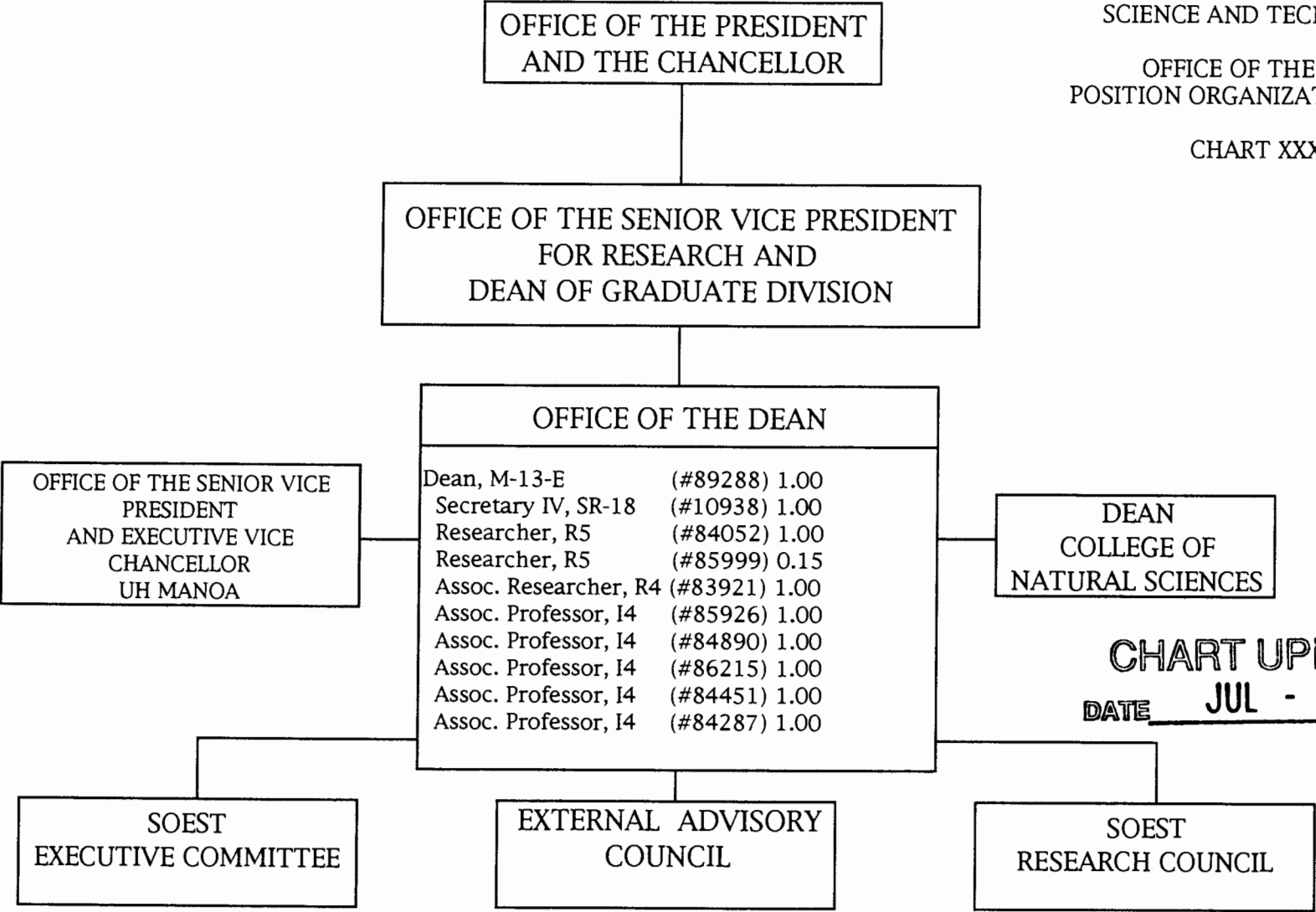
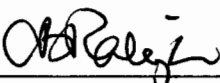


CHART UPDATED  
DATE JUL - 1 2000

APPROVED:

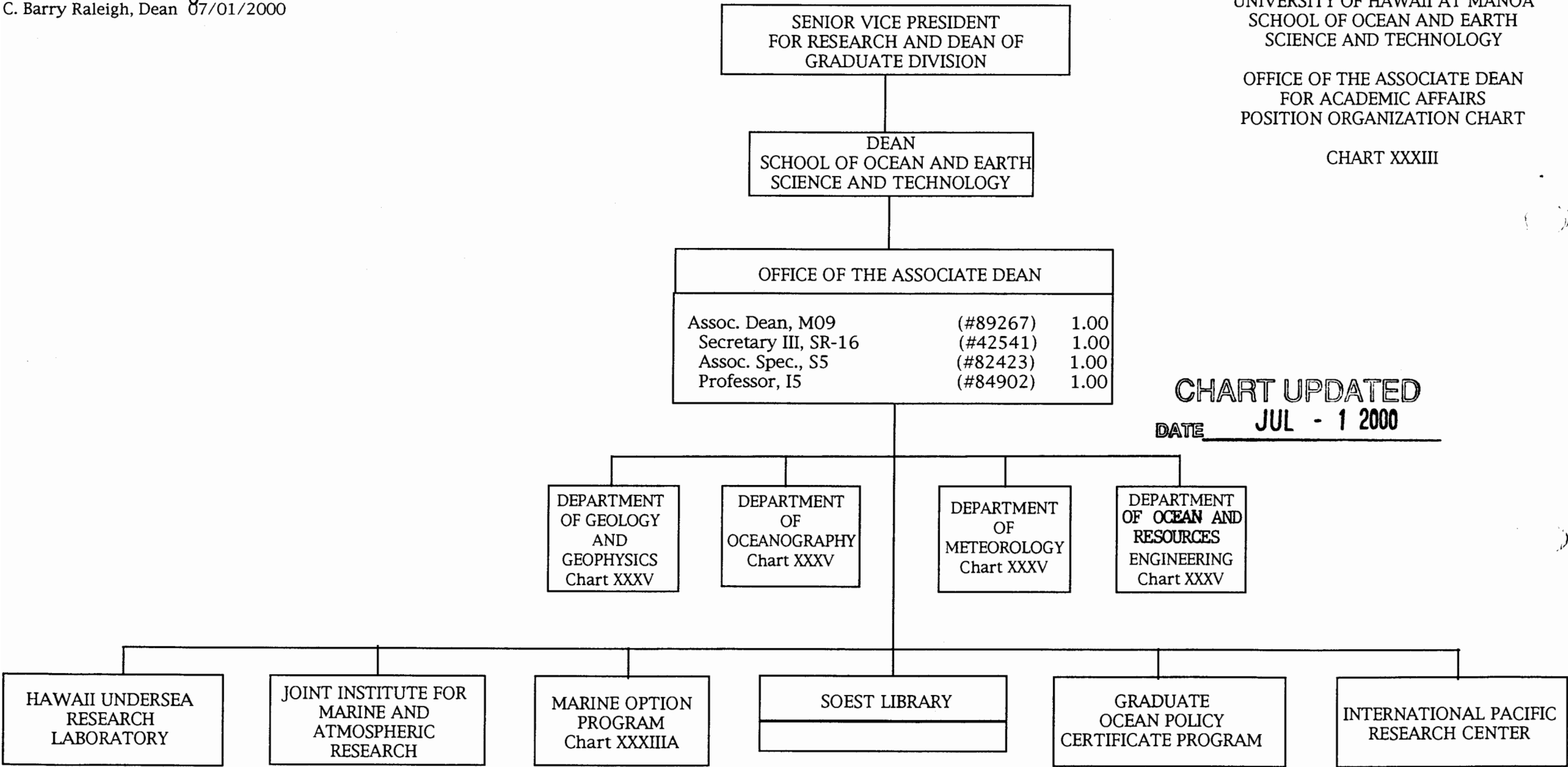


C. Barry Raleigh, Dean 07/01/2000

STATE OF HAWAII  
UNIVERSITY OF HAWAII  
UNIVERSITY OF HAWAII AT MANOA  
SCHOOL OF OCEAN AND EARTH  
SCIENCE AND TECHNOLOGY

OFFICE OF THE ASSOCIATE DEAN  
FOR ACADEMIC AFFAIRS  
POSITION ORGANIZATION CHART

CHART XXXIII



STATE OF HAWAII  
UNIVERSITY OF HAWAII  
UNIVERSITY OF HAWAII AT MANOA  
SCHOOL OF OCEAN AND EARTH  
SCIENCE AND TECHNOLOGY

MARINE OPTION PROGRAM  
POSITION ORGANIZATION CHART

CHART XXXIIIA

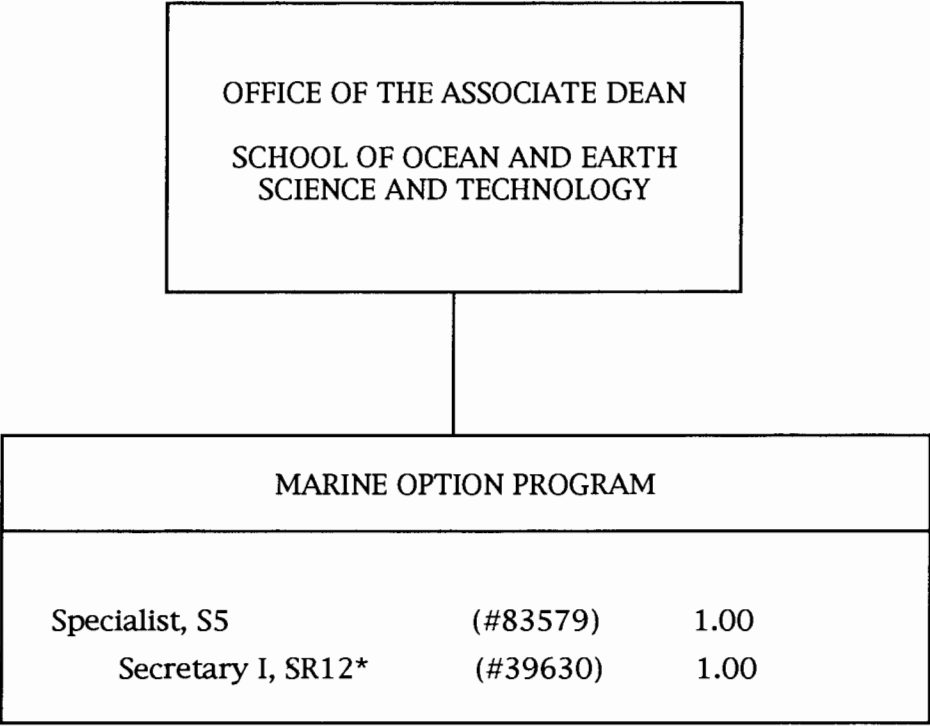


CHART UPDATED  
DATE JUL - 1 2000

\* To be reclassified

DEAN  
SCHOOL OF OCEAN AND EARTH  
SCIENCE AND TECHNOLOGY

OFFICE OF  
THE DIRECTOR OF ADMINISTRATION

Dir. of Admin. Services, M-07 (#89291) 1.00

Secretary II, SR-14 (#44083) 1.00

CHART UPDATED

DATE JUL - 1 2000

PROGRAM AND BUDGET OFFICE

UH Admin. Off. IV, PO9\*\* (#80199) 1.00

ANALYTICAL SUPPORT FACILITY

Extramurally  
Funded

PUBLICATIONS FACILITY

UH Res. Pubs. Mgr., P11 (#80098) 1.00  
UH Graphic Artist III, PO8 (#80689) 1.00

PERSONNEL OFFICE

UH Personnel Off. III, PO7 (#80943) 1.00

RESEARCH COMPUTER FACILITY

Extramurally  
Funded

ENGINEERING SUPPORT FACILITY

UH Elec. Eng. II, P15 (#80741) 0.50  
UH Elec. Eng. I, P12 (#80772) 1.00  
UH Elec. Eng. I, P12 (#80769) 1.00  
UH Elec. Eng. I, P12 (#80172) 0.50  
UH Mech. Eng. I, P12 (#80770) 0.50  
UH Elec. Tech. II, PO9 (#80334) 0.50  
UH Elec. Tech. II, PO9 (#80724) 0.50  
UH Scien. Inst. Tech. II, PO9 (#80717) 1.00  
UH Comm. Supv., PO8 (#80752) 1.00  
Eng. Lab Tech., WB-13 (#15505) 1.00

FINANCIAL MANAGEMENT SYSTEMS OFFICE

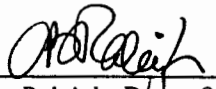
UH Admin. Off. VII, P15 (#80207) 1.00  
UH Admin. Off. III, PO7 (#81924) 1.00  
UH Admin. Off. III, PO7 (#81804) 1.00  
UH Admin. Off. III, PO7 (#81489) 1.00  
UH Admin. Off. III, PO7 (#81320) 1.00  
UH Admin. Off. III, PO7 (#80958) 1.00  
UH Fis. Actng. Spec. IV, PO9 (#81351) 1.00  
Secretary I, SR-12 (#14354) 1.00

UNIVERSITY MARINE CENTER/  
SHIP OPERATIONS

Extramurally  
Funded

\*\* To be reclassified

APPROVED:

  
C. Barry Raleigh, Dean 07/01/2000

STATE OF HAWAII  
UNIVERSITY OF HAWAII  
UNIVERSITY OF HAWAII AT MANOA  
SCHOOL OF OCEAN AND EARTH  
SCIENCE AND TECHNOLOGY

DEPARTMENTS  
POSITION ORGANIZATION CHART

CHART XXXV

DEAN  
SCHOOL OF OCEAN AND EARTH  
SCIENCE AND TECHNOLOGY

OFFICE OF THE  
ASSOCIATE DEAN

DEPARTMENT OF GEOLOGY AND GEOPHYSICS		
Chair *		
Secretary II, SR-14 (#36725)	1.00	
Faculty Positions (Joint Appt.):	12.00	
[#82011 (0.25), 82622 (0.50), 82729 (0.50), 83213 (0.50), 83643 (0.50), 84009 (0.50), 84795 (0.50), 85153 (0.50), 85338 (0.50), 85535 (0.50), 85865 (0.50), 85978 (0.50), 85997 (0.50), 86012 (0.50), 86351 (0.50), 86497 (0.50), 86576 (0.50), 86609 (0.50), 88168 (0.50), 88172 (0.50), 88174 (0.50), 85598 (0.75), 82130 (1.00)]		
Graduate Assistants:	<u>2.00</u>	
[#88075 (0.50), 88137 (0.50), 88443 (0.50), 88594 (0.50)]		
	15.00	

DEPARTMENT OF METEOROLOGY		
Chair*		
Secretary II, SR-14 (#14351)	1.00	
UH Sci. Inst. Tech. II P-09 (#80708)	1.00	
Faculty Positions:	12.00	
[#82008 (1.00), 82077 (1.00), 82368 (1.00), 82491 (1.00), 82709 (1.00), 82712 (1.00), 83700 (1.00), 84107 (1.00), 84300 (1.00), 83721 (1.00), 83070 (1.00), 83735 (1.00)]		
Graduate Assistants:	<u>1.00</u>	
[#85028 (0.50), 88339 (0.50)]		
	15.00	

DEPARTMENT OF OCEANOGRAPHY		
Chair *		
Secretary II, SR-14 (#13891)	1.00	
Faculty Positions (Joint Appt.):	14.25	
[#82059 (0.50), 82259 (0.50), 82291 (0.85), 82696 (0.50), 82726 (0.50), 82807 (0.50), 82961 (0.50), 83295 (0.50), 83355 (0.50), 83482 (0.50), 83499 (0.75), 84601 (1.00), 84673 (0.85), 84799 (0.50), 84826 (0.50), 85314 (0.80), 85920 (0.50), 85992 (0.50), 86000 (0.50), 86498 (0.50), 88156 (0.50), 88163 (0.50), 88167 (0.50), 82073 (1.00)]		
Graduate Assistants:	<u>2.50</u>	
[#84941 (0.50), 88119 (0.50), 88160 (0.50), 88569 (0.50), 87111 (0.50)]		
	17.75	

DEPARTMENT OF OCEAN AND RESOURCES ENGINEERING		
Chair*		
Secretary II, SR-14 (#18083)	1.00	
UH Sci. Inst. Tech. II, PO9 (#80720)	1.00	
Faculty Positions:	9.00	
Full Time: [#83875 (1.00), 82736 (1.00), 83376 (1.00), 83802 (1.00), 88614 (1.00), 84118 (1.00), 84447 (1.00), 85359 (1.00), 85442 (1.00)]		
Graduate Assistants:	<u>0.50</u>	
[#88382 (0.50)]		
	11.50	

CHART UPDATED  
DATE JUL - 1 2000

STATE OF HAWAII  
UNIVERSITY OF HAWAII  
UNIVERSITY OF HAWAII AT MANOA  
SCHOOL OF OCEAN AND EARTH  
SCIENCE AND TECHNOLOGY  
RESEARCH DIVISIONS  
POSITION ORGANIZATION CHART  
CHART XXXVI

DEAN  
SCHOOL OF OCEAN AND EARTH  
SCIENCE AND TECHNOLOGY

METEOROLOGY - PHYSICAL OCEANOGRAPHY		
Chair *		
Professor, I5	(#83482)	0.50
Professor, I5-R	(#82696)	0.50
Assoc. Professor, I4	(#82807)	0.50
Assoc. Professor, I4-R	(#82726)	0.50
Assoc. Professor, I4-R	(#85920)	0.50
Assoc. Professor, I4-R	(#88156)	0.50
Asst. Professor, I3-R	(#84826)	0.50
Assoc. Professor, I4-R	(#83031)	0.50

VOLCANOLOGY - PETROLOGY		
Chair*		
Secretary II, SR-14	(#14352)	1.00
MacDonald Prof. of Volcanology, I5-R	(#85535)	0.50
Professor, I5-R	(#85153)	0.50
Professor, I5-R	(#88174)	0.50
Assoc. Professor, I4-R	(#82729)	0.50
Assoc. Professor, I4-R	(#84795)	0.50
Professor, I5-R	(#85997)	0.50
Professor, I5-R	(#86012)	0.50
Asst. Professor, I3-R	(#85978)	0.50

MARINE GEOPHYSICS - SEISMOLOGY		
Chair *		
Secretary II, SR-14	(#14350)	1.00
Professor, I5-R	(#83643)	0.50
Professor, I5-R	(#88172)	0.50
Professor, I5-R	(#82011)	0.75
Professor, I5-R	(#88168)	0.50
Geophysicist, R5	(#86351)	0.50
Geophysicist, R5	(#86497)	0.50
Professor, I5-R	(#85338)	0.50
Assoc. Professor, I4-R	(#86576)	0.50
Professor, I5-R	(#86609)	0.50
Assoc. Professor, I4-R	(#85865)	0.50
UH Res. Assoc. IV, PO7	(#80562)	0.50
UH Ed. Spec. II, PO6	(#80803)	0.50

MARINE GEOLOGY - GEOCHEMISTRY		
Chair *		
Secretary II, SR-14	(#36897)	1.00
Professor, I5-R	(#82622)	0.50
Professor, I5-R	(#86000)	0.50
Professor, I5-R	(#82259)	0.50
Professor, I5-R	(#83295)	0.50
Professor, I5-R	(#86498)	0.50
Professor, I5-R	(#83499)	0.25
Professor, I5	(#82059)	0.50
Researcher, R5	(#84799)	0.50
Researcher, R5	(#84009)	0.50
Researcher, R5	(#85339)	1.00
Specialist, S5	(#88178)	0.75
Assoc. Researcher, R4	(#85992)	0.50
Assoc. Spec., S4	(#88488)	0.75
Jr. Specialist, S2	(#88194)	0.75
UH Res. Assoc. IV, PO7	(#80804)	1.00

MARINE BIOLOGY AND COASTAL ECOSYSTEMS
Chair*
Affiliate members from Hawaii Institute of Marine Biology

BIOLOGICAL OCEANOGRAPHY		
Chair *		
Secretary II, SR-14	(#36896)	1.00
Professor, I5	(#84673)	0.15
Professor, I5	(#83355)	0.50
Professor, I5	(#85314)	0.20
Professor, I5-R	(#88167)	0.50
Researcher, R5	(#82800)	1.00
Assoc. Professor, I4-R	(#88163)	0.50
Assoc. Professor, I4-R	(#82961)	0.50
Asst. Professor, I3-R	(#82291)	0.15

ENERGY RESOURCES AND OCEAN ENGINEERING
Chair *
Affiliate members from Hawaii Natural Energy Institute

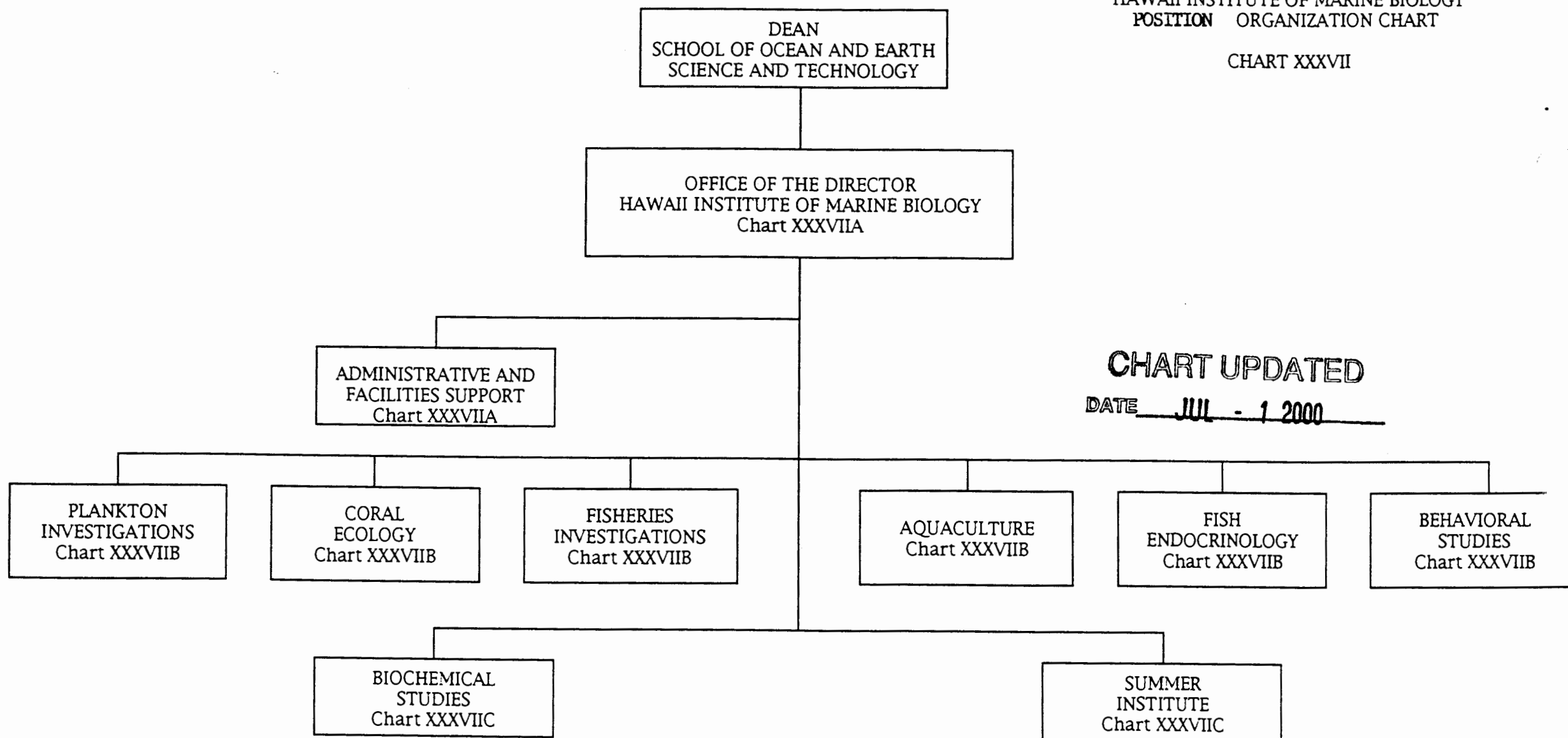
\* Appointed from faculty positions

CHART UPDATED  
JUL - 1 2000  
DATE \_\_\_\_\_

STATE OF HAWAII  
UNIVERSITY OF HAWAII  
UNIVERSITY OF HAWAII AT MANOA  
SCHOOL OF OCEAN AND EARTH  
SCIENCE AND TECHNOLOGY

HAWAII INSTITUTE OF MARINE BIOLOGY  
POSITION ORGANIZATION CHART

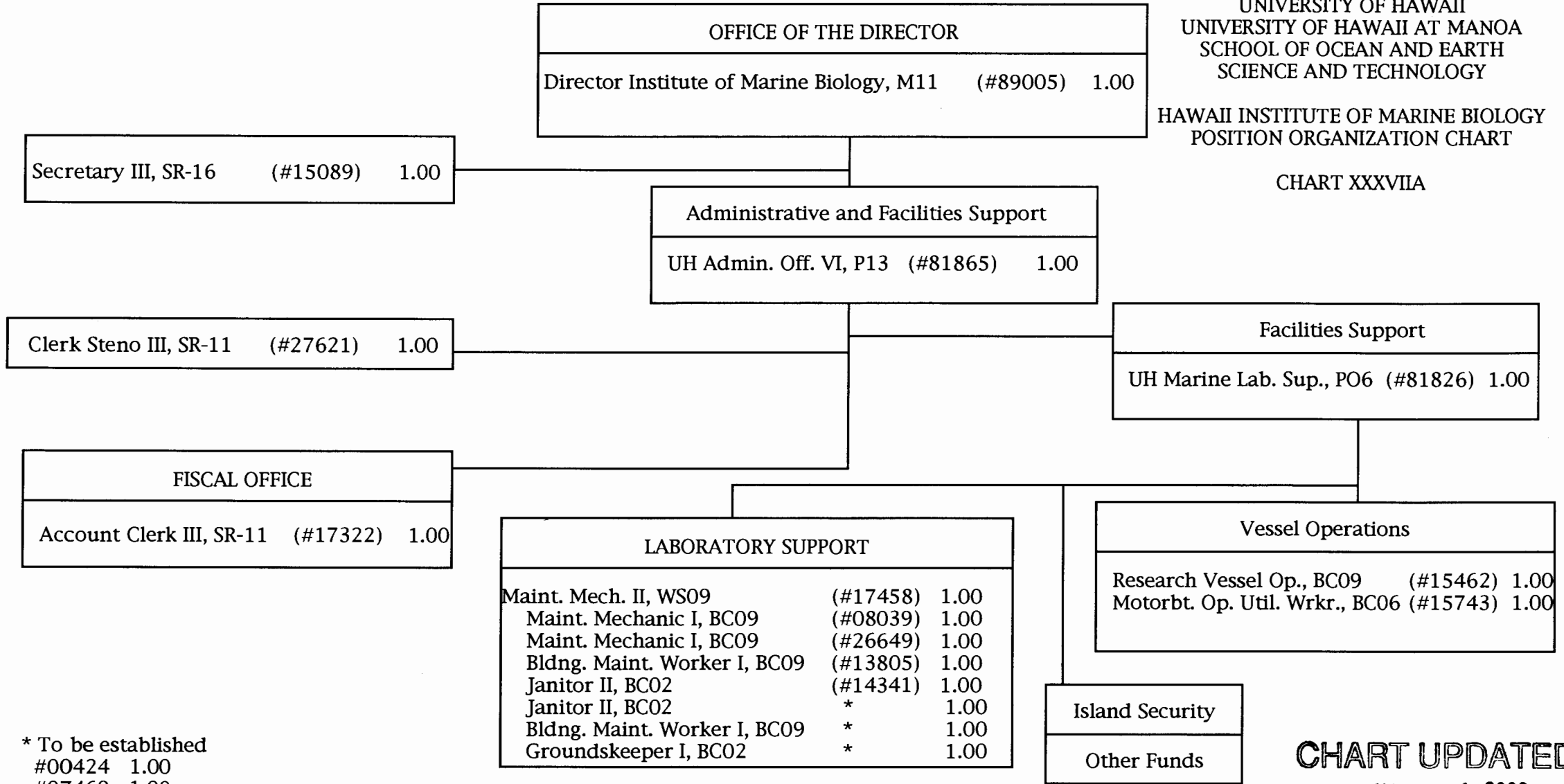
CHART XXXVII





STATE OF HAWAII  
UNIVERSITY OF HAWAII  
UNIVERSITY OF HAWAII AT MANOA  
SCHOOL OF OCEAN AND EARTH  
SCIENCE AND TECHNOLOGY  
HAWAII INSTITUTE OF MARINE BIOLOGY  
POSITION ORGANIZATION CHART

CHART XXXVIIA



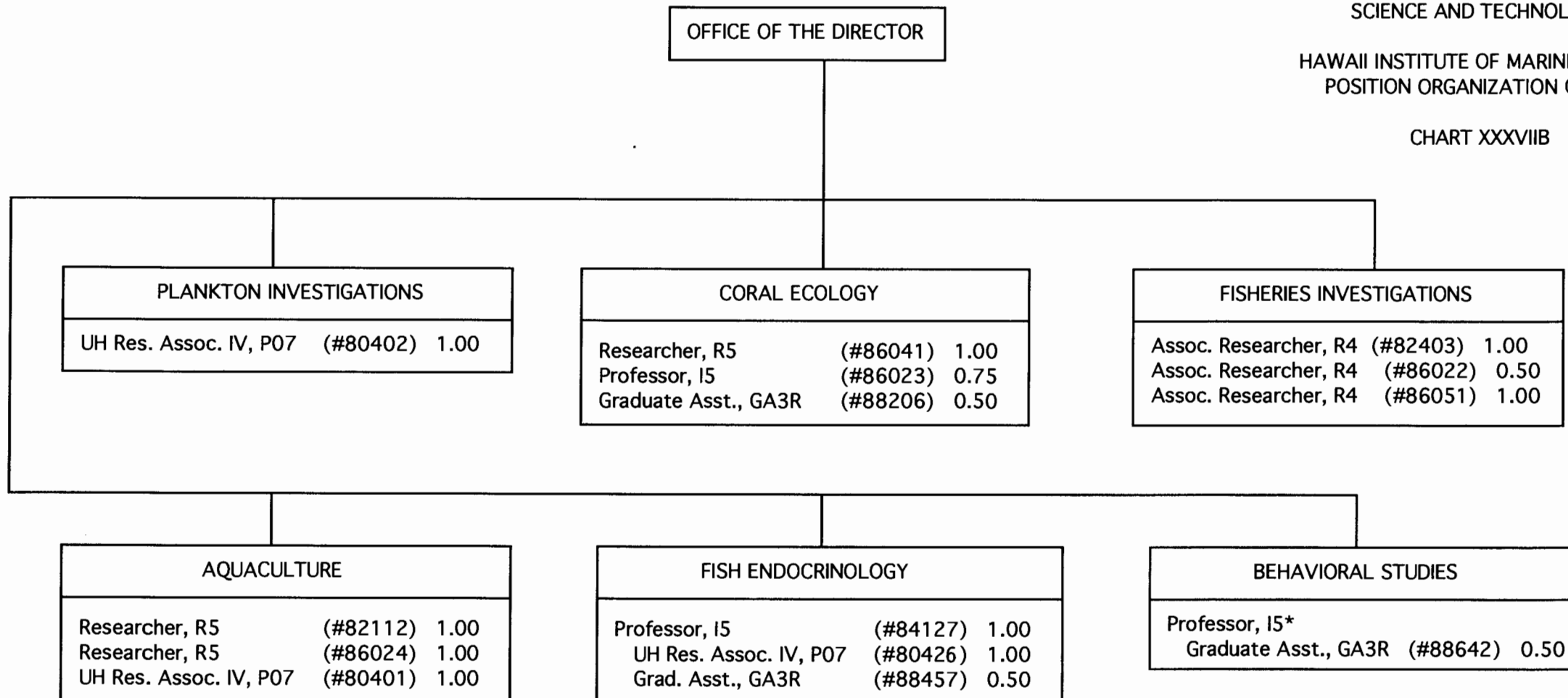
\* To be established  
#00424 1.00  
#07469 1.00  
#16026 1.00

CHART UPDATED  
DATE JUL - 1 2000

STATE OF HAWAII  
 UNIVERSITY OF HAWAII  
 UNIVERSITY OF HAWAII AT MANOA  
 SCHOOL OF OCEAN AND EARTH  
 SCIENCE AND TECHNOLOGY

HAWAII INSTITUTE OF MARINE BIOLOGY  
 POSITION ORGANIZATION CHART

CHART XXXVIIB



\*Position from Zoology

CHART UPDATED  
 DATE JUL - 1 2000

STATE OF HAWAII  
UNIVERSITY OF HAWAII  
UNIVERSITY OF HAWAII AT MANOA  
SCHOOL OF OCEAN AND EARTH  
SCIENCE AND TECHNOLOGY

HAWAII INSTITUTE OF MARINE BIOLOGY  
POSITION ORGANIZATION  
CHART

CHART XXXVIIC

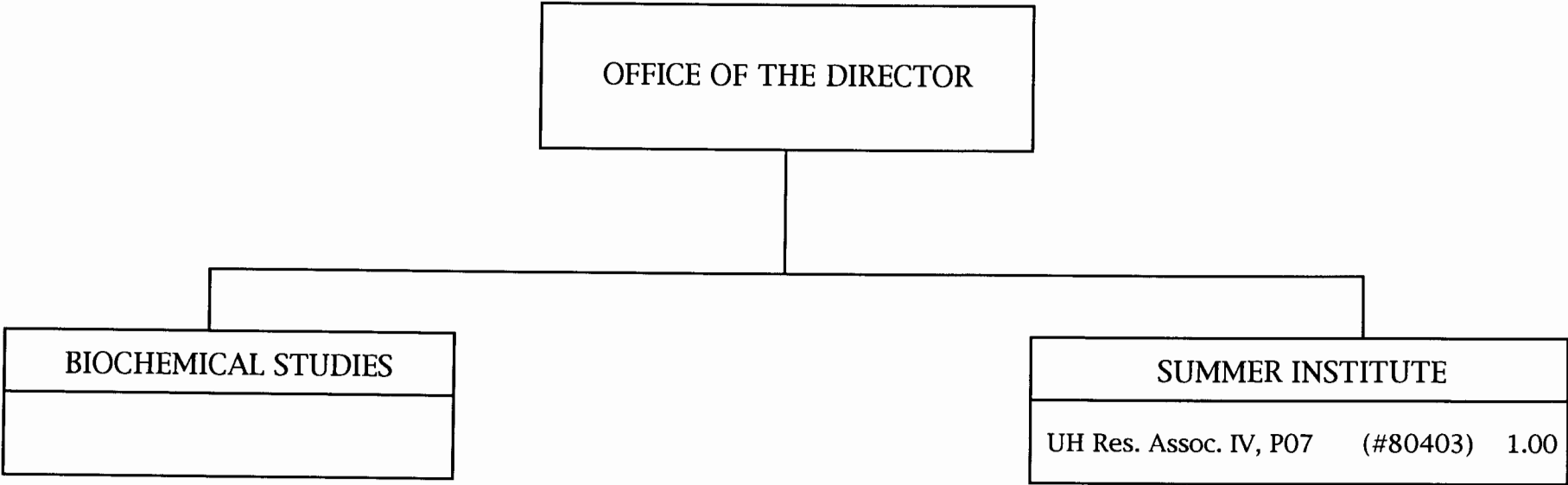


CHART UPDATED

DATE JUL - 1 2000

STATE OF HAWAII  
 UNIVERSITY OF HAWAII  
 UNIVERSITY OF HAWAII AT MANOA  
 SCHOOL OF OCEAN AND EARTH  
 SCIENCE AND TECHNOLOGY

HAWAII INSTITUTE OF GEOPHYSICS  
 AND PLANETOLOGY  
 POSITION ORGANIZATION CHART

CHART XXXVIII

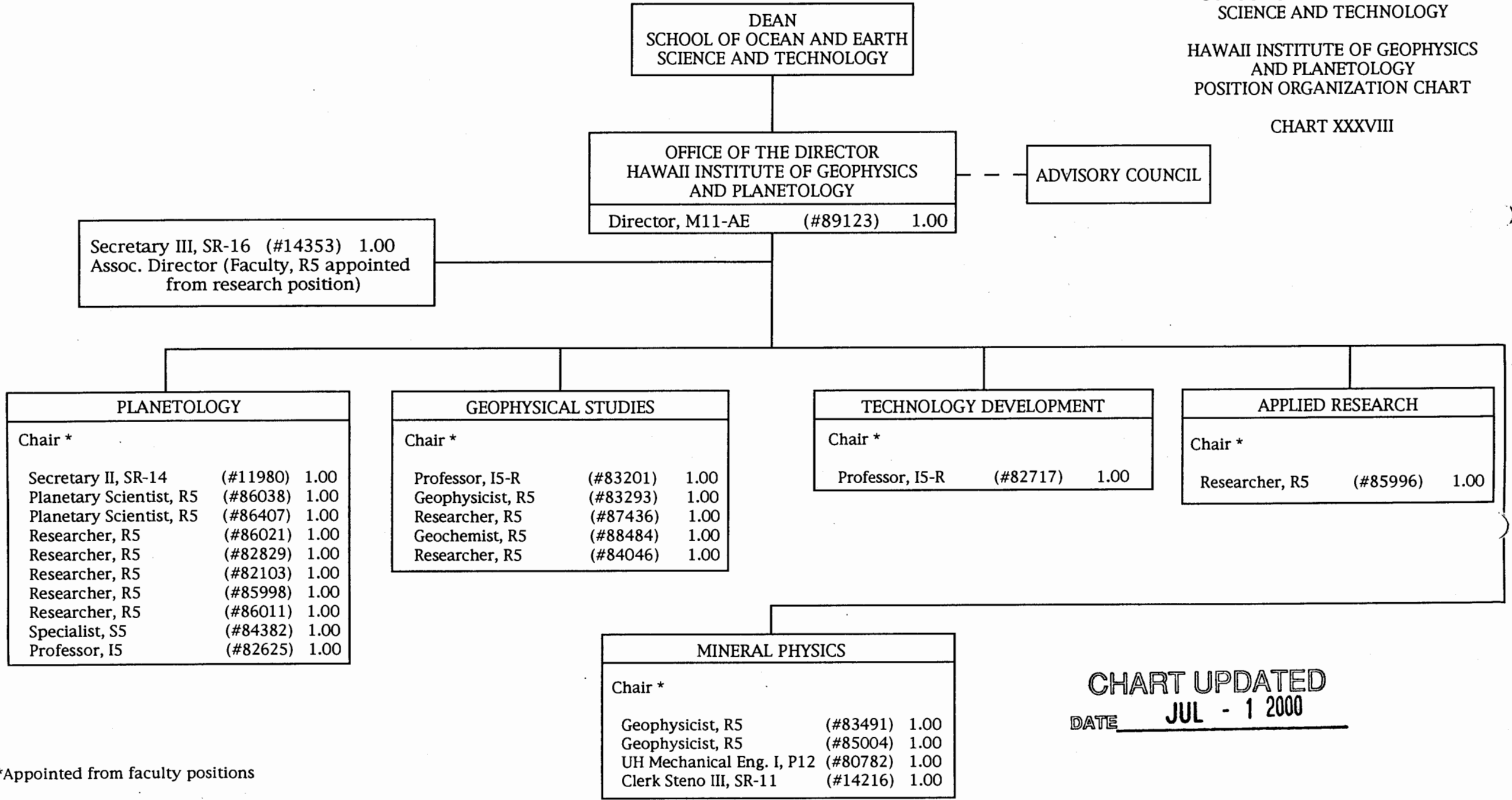


CHART UPDATED  
 DATE JUL - 1 2000

\*Appointed from faculty positions

STATE OF HAWAII  
UNIVERSITY OF HAWAII  
UNIVERSITY OF HAWAII AT MANOA  
SCHOOL OF OCEAN AND EARTH  
SCIENCE AND TECHNOLOGY

HAWAII NATURAL ENERGY INSTITUTE  
POSITION ORGANIZATION CHART

CHART XXXIX

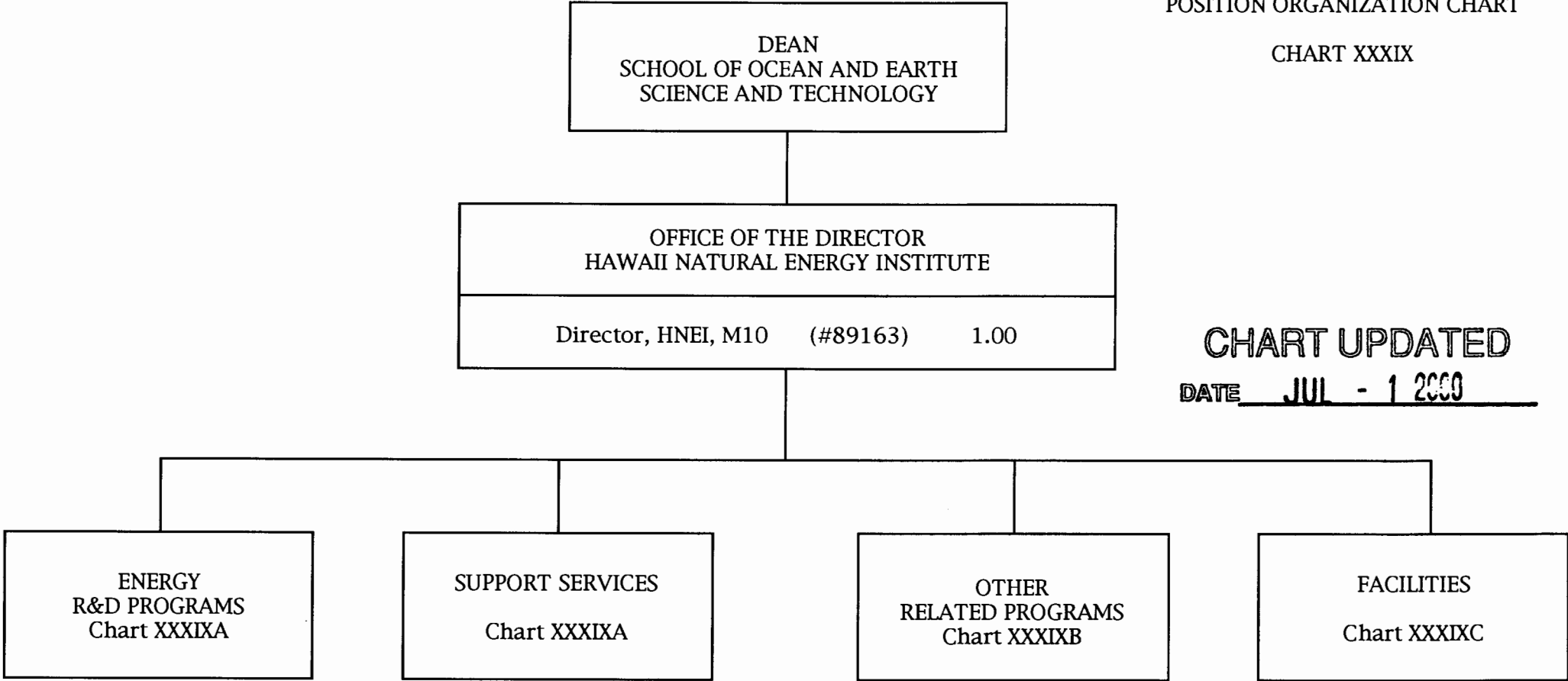


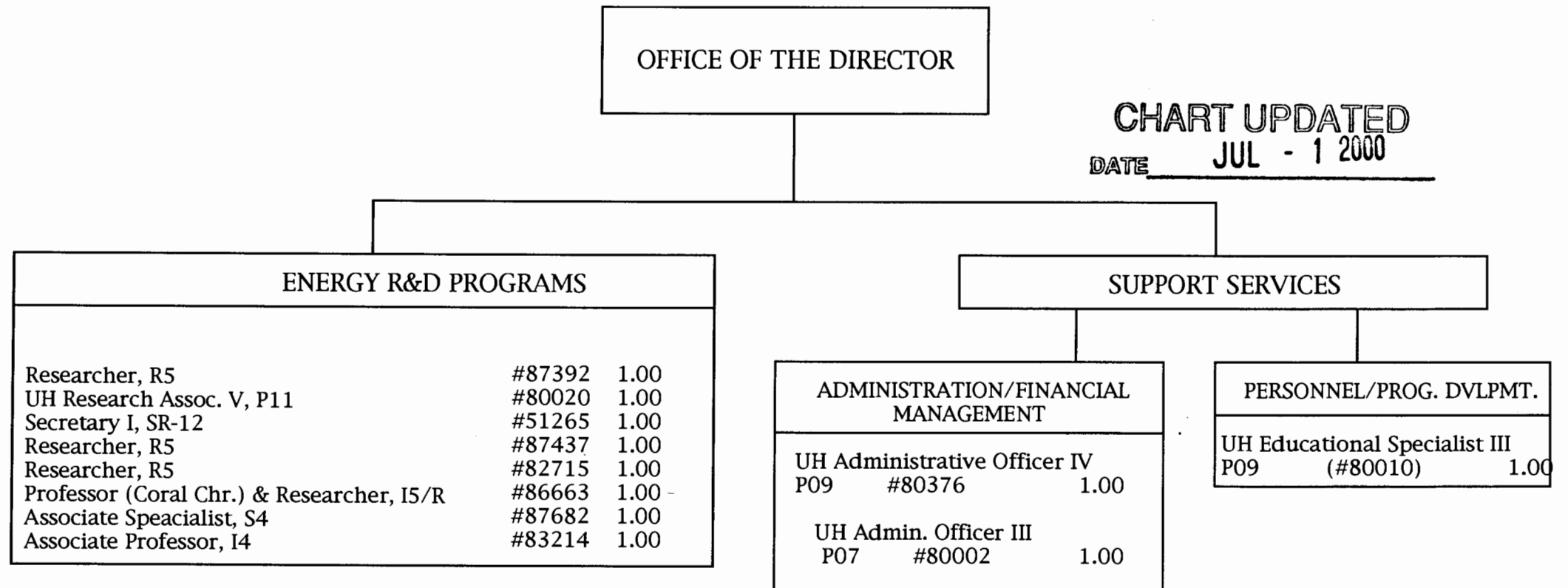
CHART UPDATED

DATE JUL - 1 2000

STATE OF HAWAII  
UNIVERSITY OF HAWAII  
UNIVERSITY OF HAWAII AT MANOA  
SCHOOL OF OCEAN AND EARTH  
SCIENCE AND TECHNOLOGY

HAWAII NATURAL ENERGY INSTITUTE  
POSITION ORGANIZATION CHART

CHART XXXIXA

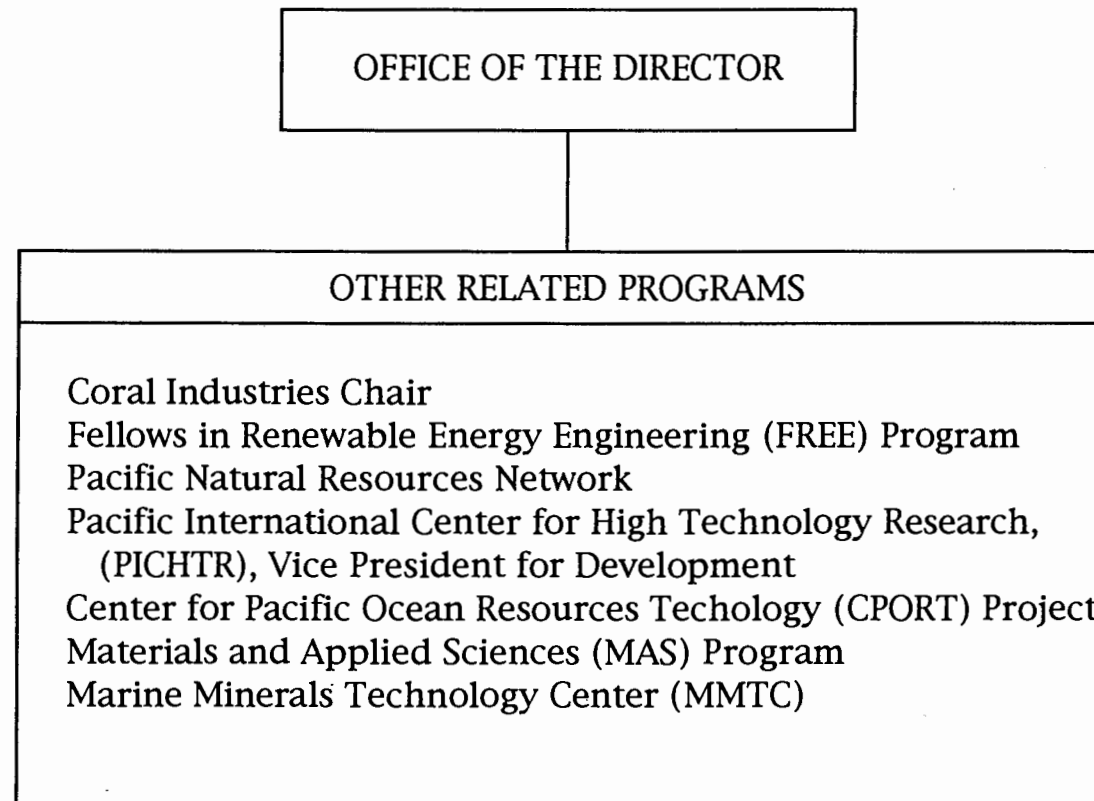


**CHART UPDATED**  
DATE JUL - 1 2000

STATE OF HAWAII  
UNIVERSITY OF HAWAII  
UNIVERSITY OF HAWAII AT MANOA  
SCHOOL OF OCEAN AND EARTH  
SCIENCE AND TECHNOLOGY

HAWAII NATURAL ENERGY INSTITUTE  
POSITION ORGANIZATION CHART

CHART XXXIXB



**CHART UPDATED**  
DATE JUL - 1 2000

STATE OF HAWAII  
UNIVERSITY OF HAWAII  
UNIVERSITY OF HAWAII AT MANOA  
SCHOOL OF OCEAN AND EARTH  
SCIENCE AND TECHNOLOGY

HAWAII NATURAL ENERGY INSTITUTE  
POSITION ORGANIZATION CHART

CHART XXXIXC

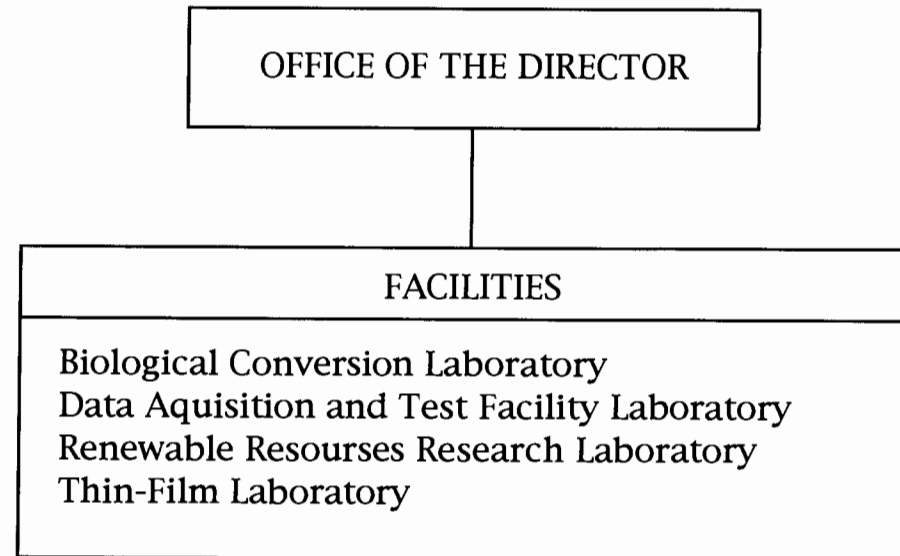


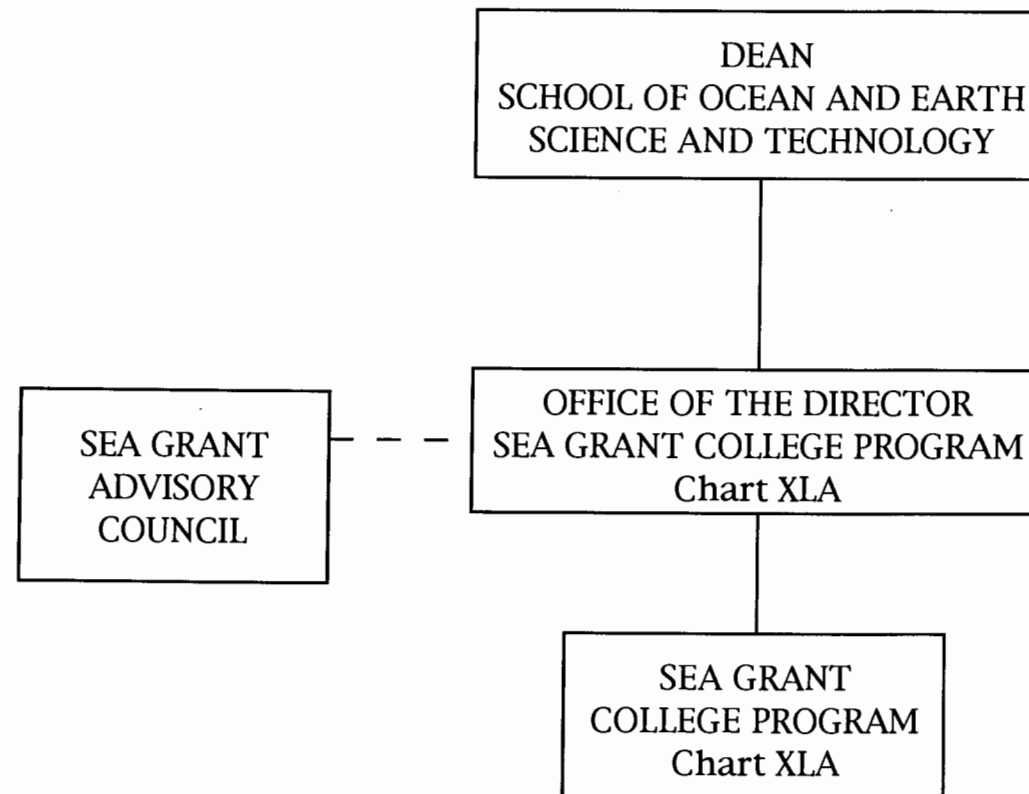
CHART UPDATED  
DATE JUL - 1 2000



STATE OF HAWAII  
UNIVERSITY OF HAWAII  
UNIVERSITY OF HAWAII AT MANOA  
SCHOOL OF OCEAN AND EARTH  
SCIENCE AND TECHNOLOGY

SEA GRANT COLLEGE PROGRAM  
ORGANIZATION CHART

CHART XL



**CHART UPDATED**

DATE JUL - 1 2000

STATE OF HAWAII  
UNIVERSITY OF HAWAII  
UNIVERSITY OF HAWAII AT MANOA  
SCHOOL OF OCEAN AND EARTH  
SCIENCE AND TECHNOLOGY

SEA GRANT COLLEGE PROGRAM  
POSITION ORGANIZATION CHART

CHART XLA

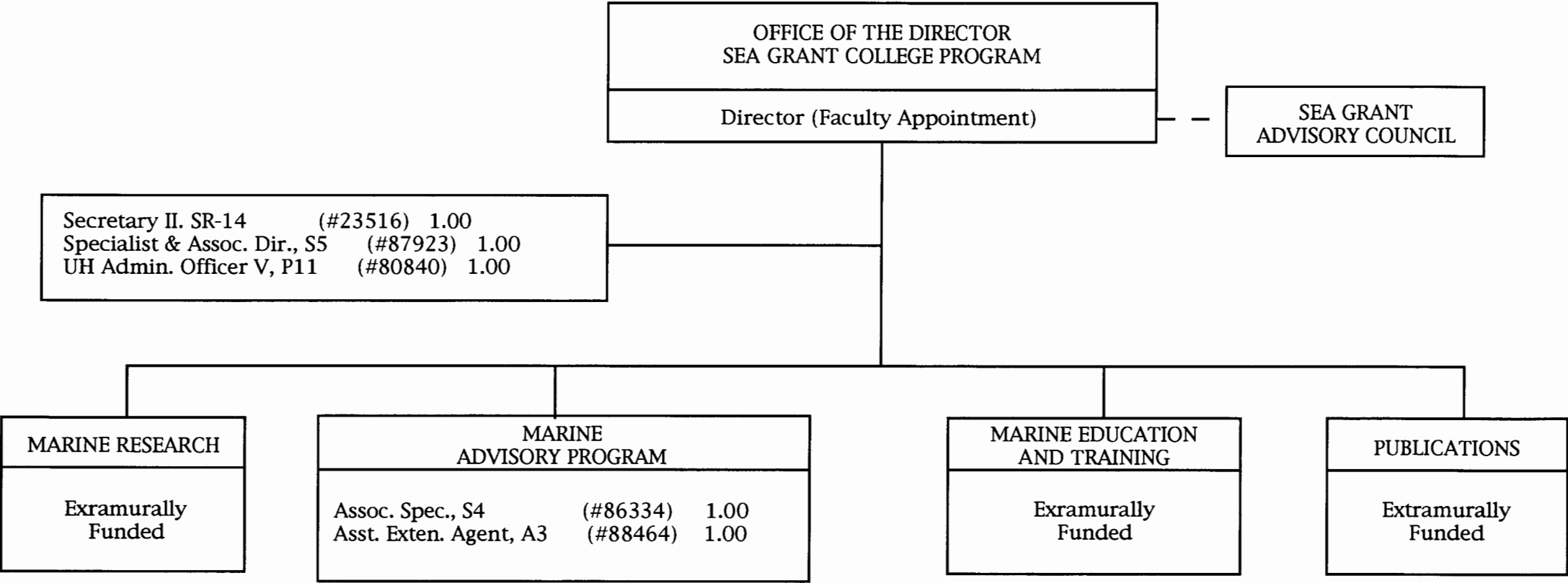


CHART UPDATED  
DATE JUL - 1 2000