

STATE OF HAWAII
UNIVERSITY OF HAWAII
UNIVERSITY OF HAWAII AT MANOA
COLLEGES OF ARTS AND SCIENCES
COLLEGE OF SOCIAL SCIENCES

CHART I

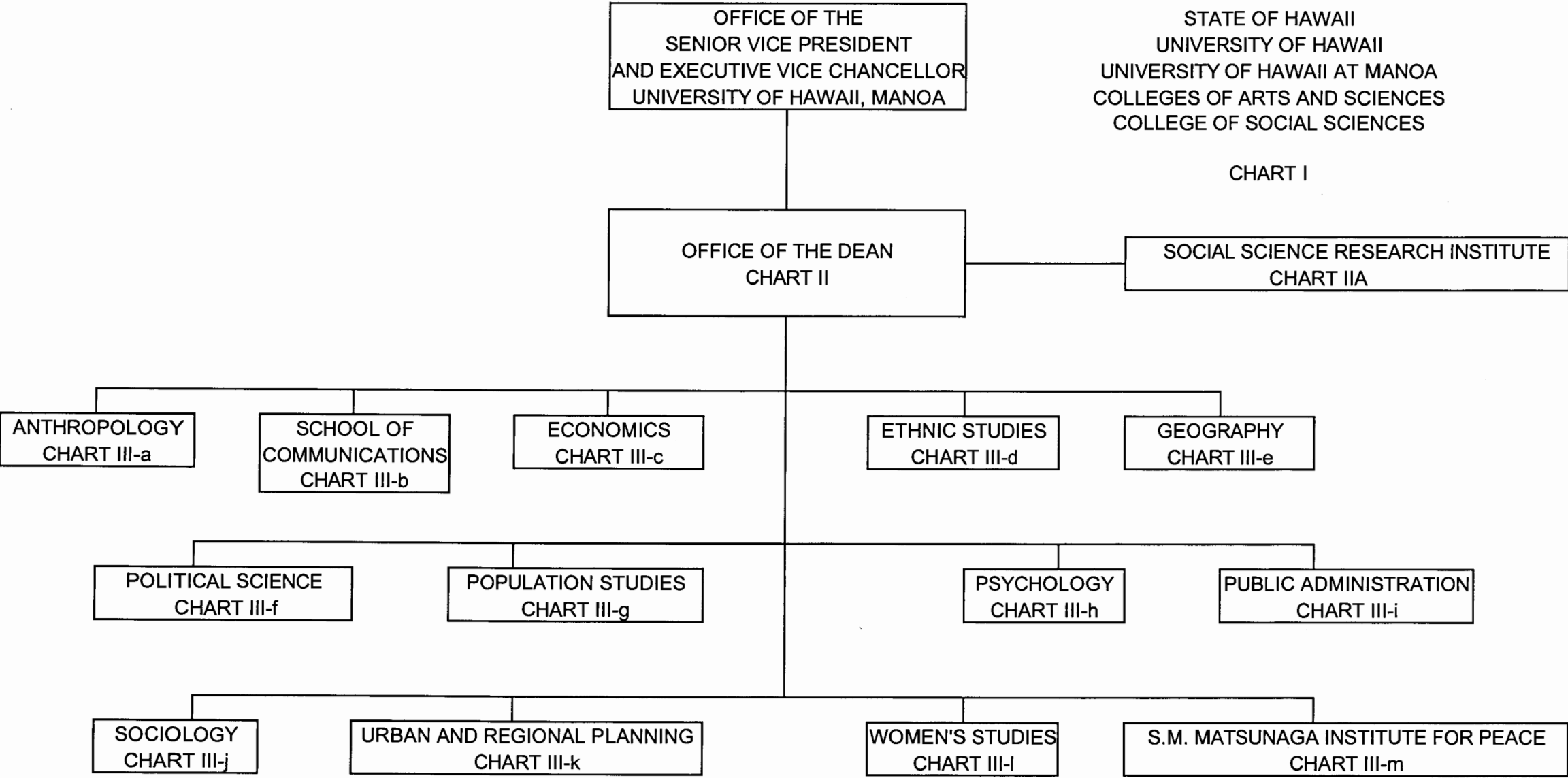

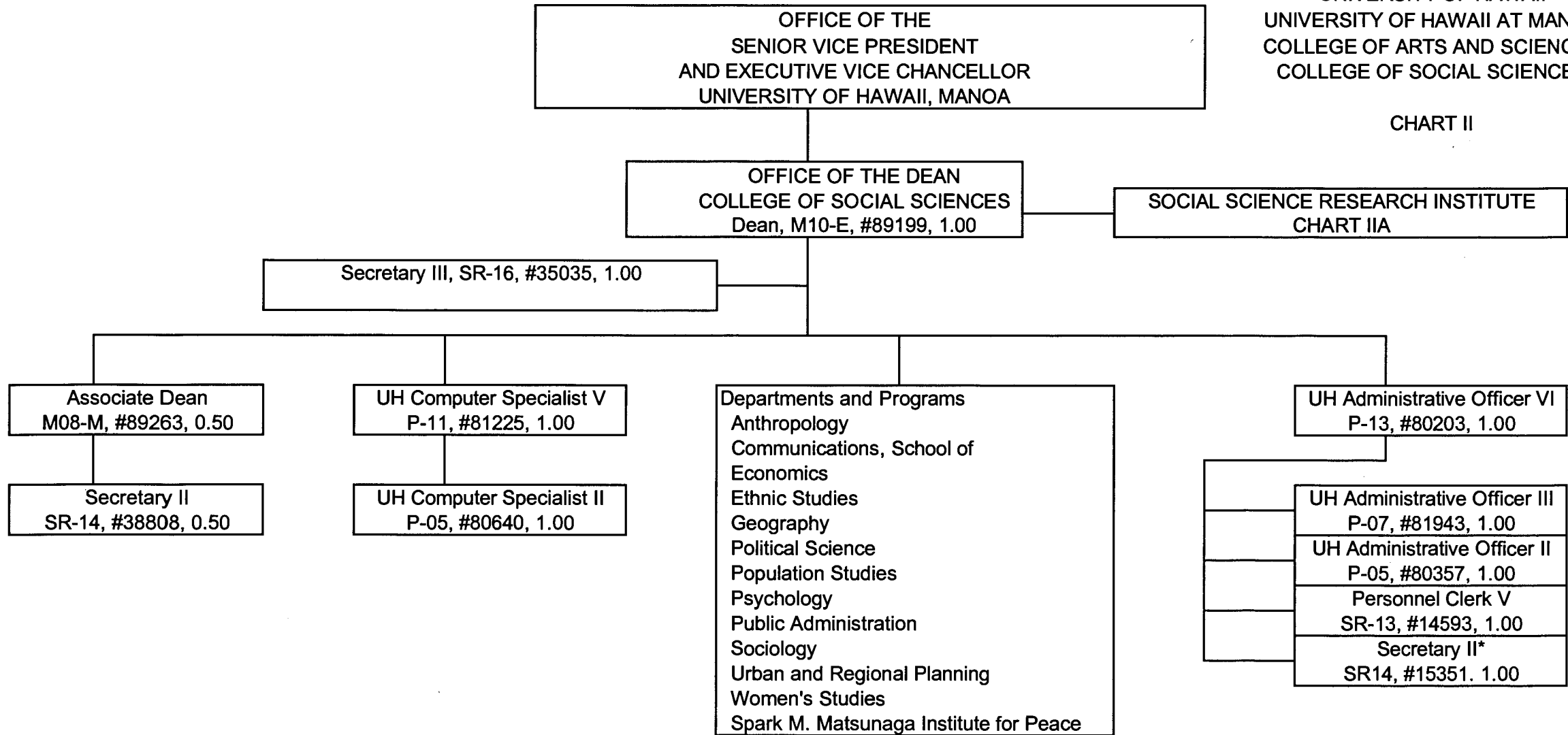


CHART UPDATED
DATE JUL - 1 2000

Approved: 
Richard Dubanoski, Dean
College of Social Sciences
JUL 31 2000

STATE OF HAWAII
UNIVERSITY OF HAWAII
UNIVERSITY OF HAWAII AT MANOA
COLLEGE OF ARTS AND SCIENCES
COLLEGE OF SOCIAL SCIENCES

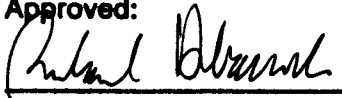
CHART II

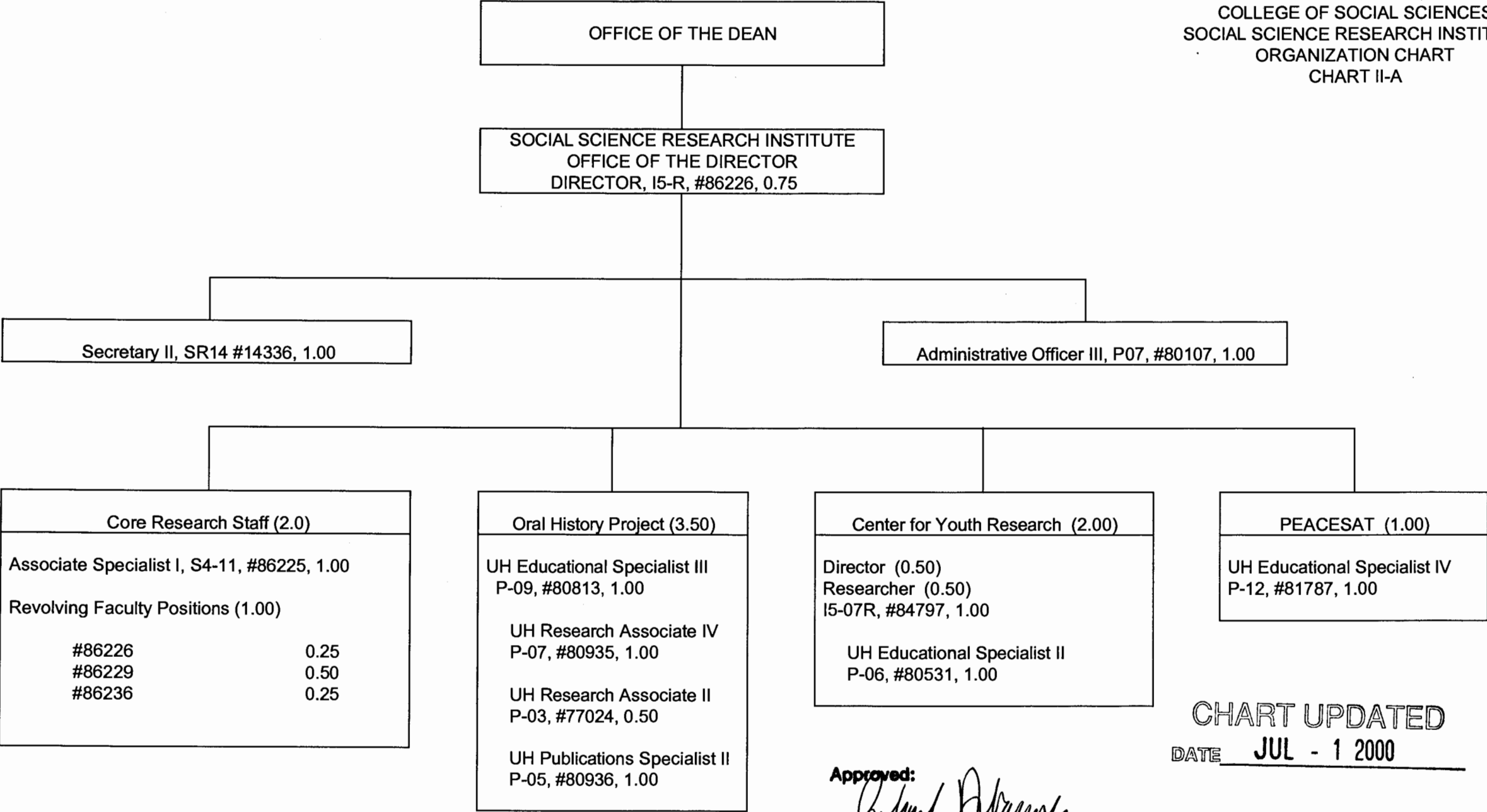


* Position to be redescribed

CHART UPDATED
DATE JUL - 1 2000

General Funds 10.00

Approved:  JUL 31 2000
Richard Dubanoski, Dean
College of Social Sciences




Approved: 
Richard Dubanoski, Dean
College of Social Sciences

CHART UPDATED
DATE JUL - 1 2000

OFFICE OF THE DEAN

STATE OF HAWAII
UNIVERSITY OF HAWAII
UNIVERSITY OF HAWAII AT MANOA
COLLEGES OF ARTS AND SCIENCES
COLLEGE OF SOCIAL SCIENCES
DEPARTMENT OF ANTHROPOLOGY

POSITION ORGANIZATION CHART

CHART III-a

DEPARTMENT OF ANTHROPOLOGY					
Chair (appointed from faculty positions)					
Secretary II, SR-14, #13482					1.00
UH Student Services Specialist II, P-06, #80639					1.00
UH Educational Specialist II, P-06, #81746					1.00
Faculty Positions:					15.00
<u>Full time:</u> #82188, 82195, 82534, 82638, 82779,					
82797, 83004, 83358, 83405, 83574,					
83720, 83924, 84206, 84399, 85082					
<u>Part time:</u> #88154(.50)					0.50
Graduate Assistants:					3.00
#83831, 83275, 88064, 88367					
88529, 88591					

					21.50

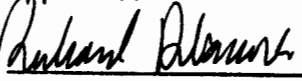
Approved:  JUL 31 2000
Richard Dubanoski, Dean
College of Social Sciences

CHART UPDATED
DATE JUL - 1 2000

General Funds 21.50

OFFICE OF THE DEAN

STATE OF HAWAII
UNIVERSITY OF HAWAII
UNIVERSITY OF HAWAII AT MANOA
COLLEGES OF ARTS AND SCIENCES
COLLEGE OF SOCIAL SCIENCES
DEPARTMENT OF COMMUNICATIONS

POSITION ORGANIZATION CHART

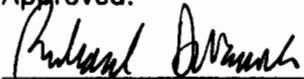
CHART III-b

SCHOOL OF COMMUNICATIONS					
Chair (appointed from faculty positions)					
Secretary II, SR-14, #13807					1.00
Clerk-Typist II, SR-08, #48445 (1)					1.00
UH Educational Specialist III, P-09, #83164					1.00
Faculty Positions:					17.00
Full time: #82279, 82280, 82602, 82871, 82905					
82982, 83302, 83756, 84217, 88169					
88619, 82500, 82611, 82946, 84115					
84478, 84792					
Graduate Assistants:					3.50
#85507, 88210, 88506, 88534, 88581					
88607, 88681					
					----- 23.50

CHART UPDATED

DATE JUL - 1 2000

Approved:



JUL 31 2000

Richard Dubanoski, Dean
College of Social Sciences

(1) Position #48445 to be redescribed and appropriately classified.

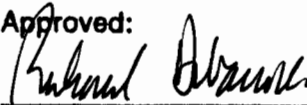
OFFICE OF THE DEAN

STATE OF HAWAII
UNIVERSITY OF HAWAII
UNIVERSITY OF HAWAII AT MANOA
COLLEGES OF ARTS AND SCIENCES
COLLEGE OF SOCIAL SCIENCES
DEPARTMENT OF ECONOMICS

POSITION ORGANIZATION CHART

CHART III-c

DEPARTMENT OF ECONOMICS					
Chair (appointed from faculty positions)					
Secretary II, SR-14, #14362					1.00
Clerk-Stenographer III, SR-11, #14360					1.00
Faculty Positions:					17.00
Full time:	#82286,	82679,	82777,	82838,	83023
	83411,	83484,	83748,	83943,	84047
	84054,	84643,	84815,	85027,	83611
	82192				
Part time:	#83650	(0.50),	84810	(0.50)	
Graduate Assistants:					4.50
	#88061,	88175,	88193,	88233,	88248
	88262,	88420,	88517,	88631	
					----- 23.50

Approved:  JUL 31 2000
Richard Dubanoski, Dean
College of Social Sciences

General Funds 23.50

CHART UPDATED
DATE JUL - 1 2000

OFFICE OF THE DEAN

STATE OF HAWAII
UNIVERSITY OF HAWAII
UNIVERSITY OF HAWAII AT MANOA
COLLEGES OF ARTS AND SCIENCES
COLLEGE OF SOCIAL SCIENCES
DEPARTMENT OF ETHNIC STUDIES

POSITION ORGANIZATION CHART

CHART III-d

DEPARTMENT OF ETHNIC STUDIES						
Chair (appointed from faculty positions)						
Secretary II, SR-14, #24006					1.00	
Faculty Positions:						
Full time:	#83195,	85586,	84790,	84805,	84801	8.00
	84803,	84807,	84813			

					9.00	

Approved: Richard Dubanoski JUL 31 2000
Richard Dubanoski, Dean
College of Social Sciences

General Funds 9.00

CHART UPDATED
DATE JUL - 1 2000

OFFICE OF THE DEAN

STATE OF HAWAII
UNIVERSITY OF HAWAII
UNIVERSITY OF HAWAII AT MANOA
COLLEGES OF ARTS AND SCIENCES
COLLEGE OF SOCIAL SCIENCES
DEPARTMENT OF GEOGRAPHY

POSITION ORGANIZATION CHART

CHART III-e

DEPARTMENT OF GEOGRAPHY

Chair (appointed from faculty positions)

Secretary II, SR-14, #14358 1.00

Clerk-Stenographer II, SR-09, #18580 1.00

UH Educational Specialist II, P-06, #80641 1.00

Faculty Positions: 15.50

Full time: #84917, 82332, 82681, 82708, 83935
82680, 84791, 84209, 84254, 84518
84565, 84841, 85298, 82328, 84868

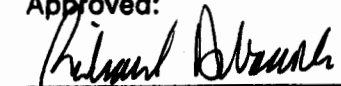
Part time: #82338 (0.50)

Graduate Assistants: 6.00

#88065, 88103, 88110, 88140, 88189
88217, 88232, 88391, 88416, 88446
84864, 88620

24.50

Approved:



JUL 31 2000

Richard Dubanoski, Dean
College of Social Sciences

General Funds 24.50

CHART UPDATED

DATE JUL - 1 2000

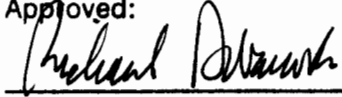
OFFICE OF THE DEAN

STATE OF HAWAII
UNIVERSITY OF HAWAII
UNIVERSITY OF HAWAII AT MANOA
COLLEGES OF ARTS AND SCIENCES
COLLEGE OF SOCIAL SCIENCES
DEPARTMENT OF POLITICAL SCIENCE

POSITION ORGANIZATION CHART

CHART III-f

DEPARTMENT OF POLITICAL SCIENCE					
Chair (appointed from faculty positions)					
Secretary II, SR-14, #11112					1.00
Clerk-Stenographer II, SR-09, #14363					1.00
Clerk-Stenographer II, SR-09, #21775					1.00
Faculty Positions:					24.00
Full time:	#82145,	82278,	82317,	82823	82913,
	83085,	83162,	83194,	83311,	83370,
	83621,	83753,	83778,	83858,	84023,
	84042,	84059,	84109,	84130,	84234,
	84556,	84800,	84812		
Part time:	#83277	(0.50),	88549	(0.50)	
Graduate Assistants:					3.50
	#88076,	88090,	88238,	88336,	88407
	88676,	84880			
					----- 30.50

Approved:  JUL 31 2000
Richard Dubanoski, Dean
College of Social Sciences

General Funds 30.50

CHART UPDATED
DATE JUL - 1 2000

OFFICE OF THE DEAN

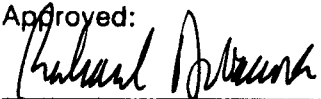
STATE OF HAWAII
UNIVERSITY OF HAWAII
UNIVERSITY OF HAWAII AT MANOA
COLLEGES OF ARTS AND SCIENCES
COLLEGE OF SOCIAL SCIENCES
POPULATION STUDIES PROGRAM

POSITION ORGANIZATION CHART

CHART III-g

POPULATION STUDIES PROGRAM		
Director (appointed from faculty positions)		0.00
Faculty Position		
Part Time:	#84816 (0.50)	0.50

		0.50

Approved:  JUL 31 2000
Richard Dubanoski, Dean
College of Social Sciences

General Funds 0.50

CHART UPDATED
DATE JUL - 1 2000

OFFICE OF THE DEAN

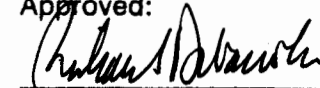
STATE OF HAWAII
UNIVERSITY OF HAWAII
UNIVERSITY OF HAWAII AT MANOA
COLLEGES OF ARTS AND SCIENCES
COLLEGE OF SOCIAL SCIENCES
DEPARTMENT OF PSYCHOLOGY

POSITION ORGANIZATION CHARTS

CHART III-h

DEPARTMENT OF PSYCHOLOGY					
Chair (appointed from faculty positions)					
Director, Clinical Studies (appointed from faculty positions)					
Secretary II, SR-14, #12856					1.00
Clerk-Stenographer III, SR-11, #19052					1.00
UH Educational Specialist III, P-09, #80638					1.00
Faculty Positions:					25.75
Full time:	#82198,	82294,	82398,	82412,	82471,
	82537,	82564,	82615,	82629,	82916,
	83092,	83110,	83507,	83626,	84131,
	82114,	84346,	84416,	84491,	84497,
	84827,	84866,	85075,	85450,	88005
Part time:	84319	(0.75),			
Graduate Assistants:					4.00
	#85148,	88046,	88060,	88252,	88320
	88362,	88511,	88559		
					----- 32.75

Approved:



JUL 31 2000

Richard Dubanoski, Dean
College of Social Sciences

General Funds 32.75

CHART UPDATED

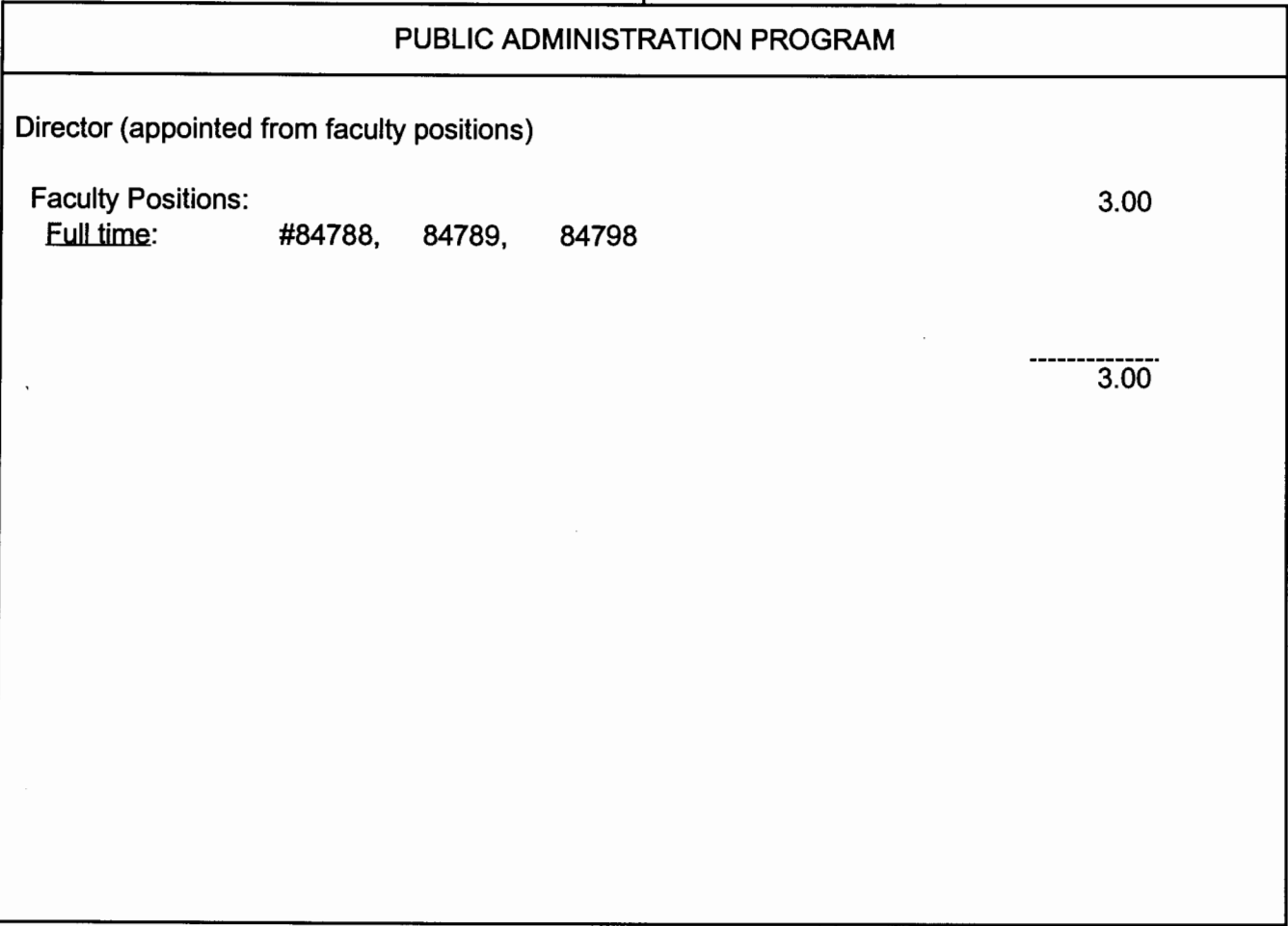
DATE JUL - 1 2000

OFFICE OF THE DEAN

STATE OF HAWAII
UNIVERSITY OF HAWAII
UNIVERSITY OF HAWAII AT MANOA
COLLEGES OF ARTS AND SCIENCES
COLLEGE OF SOCIAL SCIENCES
PUBLIC ADMINISTRATION PROGRAM

POSITION ORGANIZATION CHART

Chart III-i



Approved: Richard Dubanoski JUL 31 2000
Richard Dubanoski, Dean
College of Social Sciences

General Funds 3.00

CHART UPDATED
DATE JUL - 1 2000

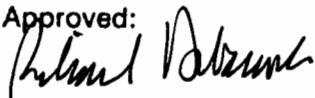
OFFICE OF THE DEAN

STATE OF HAWAII
UNIVERSITY OF HAWAII
UNIVERSITY OF HAWAII AT MANOA
COLLEGES OF ARTS AND SCIENCES
COLLEGE OF SOCIAL SCIENCES
DEPARTMENT OF SOCIOLOGY

POSITION ORGANIZATION CHART

CHART III-j

DEPARTMENT OF SOCIOLOGY					
Chair (appointed from faculty positions)					
Secretary II, SR-14, #13485					1.00
Clerk-Stenographer II, SR-09, #16953					1.00
Faculty Positions:					18.00
Full time:	#82097,	82125,	82204,	82207,	82323,
	82605,	83050,	84076,	84121,	84237,
	84286,	84456,	84502,	84504,	84575,
	84616,	84642,	85806		
Graduate Assistants:					5.50
	#88008,	88100,	88182,	88208,	88268
	88408,	88485,	88498,	88533,	88616
	88392				
					----- 25.50

Approved:  JUL 31 2000
Richard Dubanoski, Dean
College of Social Sciences

General Funds 25.50

CHART UPDATED
DATE JUL - 1 2000

OFFICE OF THE DEAN

STATE OF HAWAII
UNIVERSITY OF HAWAII
UNIVERSITY OF HAWAII AT MANOA
COLLEGES OF ARTS AND SCIENCES
COLLEGE OF SOCIAL SCIENCES
DEPARTMENT OF URBAN AND REGIONAL PLANNING

DEPARTMENT OF URBAN AND REGIONAL PLANNING					
Chair (appointed from faculty positions)					
Secretary II, SR-14, #15640					1.00
Faculty Positions:					6.00
Full time:	#82539,	83624,	84060,	84522, 85736	
	82377				
					----- 7.00

POSITION ORGANIZATION CHART
CHART III-k

Approved: Richard Dubanoski JUL 31 2000
Richard Dubanoski, Dean
College of Social Sciences

General Funds 7.00

CHART UPDATED

DATE JUL - 1 2000

OFFICE OF THE DEAN

STATE OF HAWAII
UNIVERSITY OF HAWAII
UNIVERSITY OF HAWAII AT MANOA
COLLEGES OF ARTS AND SCIENCES
COLLEGE OF SOCIAL SCIENCES
WOMEN'S STUDIES PROGRAM

POSITION ORGANIZATION CHART

CHART III-I

WOMEN'S STUDIES PROGRAM

Director (appointed from faculty positions)

Secretary II, SR-14, #31328

0.75

Faculty Positions:

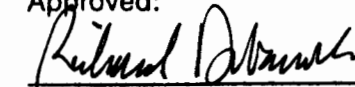
6.00

Full time: #82870, 86071, 84817, 84804, 84200

Part time: #84057 (0.50), 85962 (0.50)

6.75

Approved:



JUL 31 2000

Richard Dubanoski, Dean
College of Social Sciences

General Funds 6.75

CHART UPDATED

DATE JUL - 1 2000

OFFICE OF THE DEAN

STATE OF HAWAII
UNIVERSITY OF HAWAII
UNIVERSITY OF HAWAII AT MANOA
COLLEGES OF ARTS AND SCIENCES
COLLEGE OF SOCIAL SCIENCES
SPARK M. MATSUNAGA INSTITUTE FOR PEACE

SPARK M. MATSUNAGA INSTITUTE FOR PEACE

POSITION ORGANIZATION CHART

CHART III-m

Director (appointed from faculty positions)

Secretary I, SR-12, #42279 1.00

UH Educational Specialist III, P-09, #80358 1.00

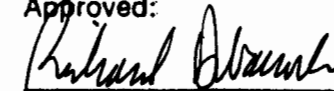
Faculty Positions: 3.50

Full time: #88092, 88732, 88112

Part time: #88113 (.50)

5.50

Approved:



JUL 31 2000

Richard Dubanoski, Dean
College of Social Sciences

General Funds 5.50

CHART UPDATED

DATE JUL - 1 2000