

**OFFICE OF THE PRESIDENT AND CHANCELLOR (UHM)**

State of Hawai'i  
University of Hawai'i  
University of Hawai'i at Mānoa

**OFFICE OF THE VICE PRESIDENT FOR STUDENT AFFAIRS**

Chart IV-A

Office:  
UHM Student Services

Chart: IV  
[CURRENT]

**OFFICE OF ADMINISTRATIVE SERVICES**

Chart IV-A

**OFFICE OF THE DIRECTOR OF STUDENT  
EQUITY, EXCELLENCE AND DIVERSITY**

Chart IV-A

**OFFICE OF THE DEAN OF STUDENTS  
AND STUDENT SERVICES (UHM)**

Chart IV-A

**OFFICE OF THE DIRECTOR OF UNIVERSITYWIDE  
STUDENT AFFAIRS/ASSISTANT TO THE VP**

Chart IV-A

Center for Adults  
Returning to Education  
Chart IV-O

College Opportunities  
Program  
Chart IV-L

Hawai'i Opportunity  
Program in Education  
Chart IV-P

KOKUA Program  
Chart IV-S

Operation Kua'ana  
Chart IV-Q

Office of Multicultural  
Student Services  
Chart IV-R

Women's Center  
Chart IV-M

Co-curricular Activities,  
Programs and Services  
Chart IV-D

Counseling and  
Student Development  
Center  
Chart IV-J

International  
Student Services  
Chart IV-H

Student Employment and  
Cooperative Education  
Chart IV-G

Student Housing  
Services  
Chart IV-E

Career Services  
Chart IV-I

Children's Center  
Chart IV-N

School and College  
Services  
Chart IV-F

University Health  
Services  
Chart IV-K

Admissions and  
Records  
Chart IV-B

Financial Aid Services  
Chart IV-C

**CHART UPDATED**  
DATE JUL - 1 2000

**OFFICE OF THE PRESIDENT AND CHANCELLOR (UHM)**

**OFFICE OF THE VICE PRESIDENT FOR STUDENT AFFAIRS**

Vice President for Student Affairs, M13, #89103

**ADMINISTRATIVE SUPPORT**

Private Secretary II, SR22, #37046

**OFFICE OF ADMINISTRATIVE SERVICES**

UH Administrative Officer VI, P13, #80146

**FISCAL SERVICES**

Account Clerk III, SR11, #21426

**PERSONNEL SERVICES**

UH Personnel Officer II, P05, #81879  
Personnel Clerk V, SR13, #44556

**CHART UPDATED**

DATE JUL - 1 2000

**OFFICE OF THE DIRECTOR OF STUDENT  
EQUITY, EXCELLENCE AND DIVERSITY**

Director of Minority Students, M6, #89298  
UH Administrative Officer III, P07, #81088  
Specialist, S5, #82594  
UH Educational Specialist, #81063\*

**OFFICE OF THE DEAN OF STUDENTS  
AND STUDENT SERVICES (UHM)**

Dean of Student Services (UHM), M9, #89133  
Secretary III, SR16, #00745  
Assistant Specialist, S3, #84173  
Assistant Specialist, S3, #83035  
Associate Specialist, S4, #85485  
Assistant Specialist, S3, #88099

**OFFICE OF THE DIRECTOR OF UNIVERSITYWIDE  
STUDENT AFFAIRS/ASSISTANT TO THE VP**

Supervision temporarily provided by VPSPA, #89103  
Secretary II, SR14, #44996  
UH Institutional Analyst III, P10, #81734  
UH Educational Specialist III, P09, #81210  
UH Student Services Specialist IV, P12, #81298

\*Pending establishment

General Funds (UOH 100) 18.00  
General Funds (UOH 900) 2.00

Office:

**UHM Student Services  
Admissions and Records**

Chart: IV-B  
[CURRENT]

**OFFICE OF THE DIRECTOR OF UNIVERSITYWIDE  
STUDENT AFFAIRS/ASSISTANT TO THE VP**

**ADMISSIONS AND RECORDS**

Specialist, S5, #82701

**ADMINISTRATIVE SUPPORT**

Secretary II, SR 14, #14866  
UH Student Services Specialist IV, P12, #81154 (.3)

CHART UPDATED  
JUL - 1 2000  
DATE \_\_\_\_\_

**ADMISSIONS AND RESIDENCY**

UH Student Services Specialist IV, P12, #81154 (.7)  
Clerk Supervisor III, SR14, #00748  
Clerk IV, SR10, #00772, #12550, #12842, #12843  
#13495, #13496, #18009, #21427  
UH Student Services Specialist III, P09, #80626  
UH Student Services Specialist III, P09, #81414  
UH Student Services Specialist III, P09, #80625  
Clerk IV, SR10, #11496  
Clerk IV, SR10, #26538  
UH Student Services Specialist III, P09, #80530  
UH Student Services Specialist II, P06, #80096

**RECORDS AND REGISTRATION**

UH Student Services Specialist IV, P12, #81614  
UH Student Services Specialist III, P09, #80658  
Clerk Supervisor III, SR14, #17447  
Clerk IV, SR10, #00750, #13959, #14863, #14864  
#14865(R), #15502, #17450, #18010  
#21430  
Clerk III, SR8, #13494 (R)  
Clerk III, SR8, #26539 (R)  
Clerk Typist II, SR8, #40006  
Scheduler, SR20, #05837

**INFORMATION AND COMPUTER SERVICES**

UH Student Services Specialist IV, P12, #81070  
UH Computer Specialist IV, P09, #80017  
UH Student Services Specialist I, P03, #81071  
Clerk Supervisor II, SR12, #22322  
Clerk IV, SR10, #40004  
Clerk IV, SR10, #40005  
Clerk-Stenographer II, SR9, #22321  
Clerk III, SR8, #15501  
Clerk III, SR8, #40003  
UH Computer Specialist III, P07, #80018

General Funds 42.00  
Revolving Funds 3.00

Office:

UHM Student Services  
Financial Aid Services

Chart: IV-C  
[CURRENT]

**OFFICE OF THE DIRECTOR OF UNIVERSITYWIDE  
STUDENT AFFAIRS/ASSISTANT TO THE VP**

**FINANCIAL AID SERVICES**

Director of Financial Aid, M4, #89184

**ADMINISTRATIVE SUPPORT**

Secretary II, SR14, #05737

CHART UPDATED  
DATE JUL - 1 2000

**PROGRAM SPECIALISTS**

UH Student Services Specialist III, P09, #81913  
UH Student Services Specialist II, P06, #81608  
UH Student Services Specialist II, P06, #81607  
UH Student Services Specialist II, P06, #81606  
UH Student Services Specialist II, P06, #81609  
UH Student Services Specialist II, P06, #81151  
UH Student Services Specialist II, P06, #80922

**DATA AND CLERICAL SUPPORT SECTION**

Clerical Supervisor III, SR14, #17599  
Clerk-Typist III, SR10, #16967  
Clerk-Typist III, SR10, #15265  
Clerk-Typist III, SR10, #17600  
Clerk-Typist III, SR10, #10929  
Clerk III, SR8, #44397

**OFFICE OF THE DEAN OF STUDENTS AND STUDENT SERVICES  
(UHM)**

**CO-CURRICULAR ACTIVITIES, PROGRAMS & SERVICES**

Director of Bureau of Student Activities, M4, #89190

**ADMINISTRATIVE AND FISCAL SUPPORT**

UH Administrative Officer IV, P09, #80163 (R)  
UH Adm/Fiscal Support Specialist, P01, #80649 (R)  
Account Clerk IV, SR13, #25700 (R)  
Account Clerk II, SR08, #45362 (R)

**CLERICAL SUPPORT**

Secretary II, SR14, #13587  
Clerk-Typist III, SR10, #28134 (R)  
Clerk-Typist II, SR08, #25699 (R)  
Clerk II, SR06, #25698 (R)

**INTRAMURAL SPORTS**

Specialist, S5, #83512  
Specialist, S5, #85083  
Junior Specialist, S2, #83788  
Clerk-Typist II, SR08, #26460

**STUDENT LEADERSHIP DEVELOPMENT  
& CO-CURRICULAR INTERVENTIONS  
PROGRAMS**

Junior Specialist, S2, #82864  
Junior Specialist, S2, #82573  
Assistant Specialist, S3, #82597  
UH Student Services Specialist II, P06, #81510(R)  
UH Student Services Specialist II, P06, #80025(R)  
UH Publication Specialist III, P07, #81186(R)  
UH Adm/Fiscal Support Specialist, P01, #81137(R)  
Junior Specialist, S2, #88334(R)  
UH Publication Spec II, P05, #81486(R)  
UH Publication Spec I, P03, #81488(R)  
UH Publication Spec I, P03, #81506(R)  
UH Student Services Specialist II, P06, #81134

**OPERATIONAL PROGRAMS,  
FACILITIES AND SERVICES**

UH Student Services Specialist III, P09, #80660(R)  
Building Maintenance Worker I, WB09, #28597(R)  
Janitor II, BC02, #25329(R), #25392(R),  
#44089(R), #46560(R)  
Bldg & Gmds Util Worker, #BC05, #45379(R),  
#44085(R), #44109(R)  
UH Student Services Specialist II, P06, #80631(R)  
UH Student Services Specialist I, P03, #80942(R)  
Junior Specialist, S2, #88765(R)

State of Hawai'i  
University of Hawai'i  
University of Hawai'i at Mānoa

Office:

**UHM Student Services  
Co-Curricular Activities,  
Programs and Services**

Chart: IV-D  
[CURRENT]

**CHART UPDATED**  
**JUL - 1 2000**  
DATE \_\_\_\_\_

General Funds	10.00
Revolving Funds	27.00

OFFICE OF THE DEAN OF STUDENTS AND STUDENT SERVICES (UHM)

State of Hawai'i  
University of Hawai'i  
University of Hawai'i at Mānoa

Office:  
UHM Student Services  
Student Housing Services

Chart: IV-E  
[CURRENT]

STUDENT HOUSING SERVICES  
Director of Student Housing,  
M6, #89007 (R)

UH Computer Spec III,  
P07, #81361 (R)  
UH Computer Spec,  
#96508F (R)\*

Secretary II,  
SR14, #00743 (R)

CONFERENCE  
ASSIGNMENTS  
OFF-CAMPUS HSG  
UH Student Svs Spec II,  
P06, #81612 (R)  
Clerk-Typist IV,  
SR12, #34981 (R)  
Clerk-Typist II,  
SR8, #18115 (R)  
SR8, #15287 (R)  
Clerk-Typist, #96005F (R)\*

FISCAL  
PERSONNEL  
UH Adm Officer IV,  
P09, #80193 (R)  
UH Adm Officer II,  
P05, #81103 (R)  
Account Clerk III,  
SR11, #24026 (R)  
Clerk-Steno III,  
SR11, #18701 (R)  
Cashier I,  
SR10, #28336 (R)

ASSISTANT DIRECTOR  
UH Student Svs Spec IV,  
P12, #80630 (R)

EDUCATIONAL  
DEVELOPMENT  
UH Student Svs Spec II,  
P06, #81611 (R)

PHYSICAL PLANT  
UH Student Svs Spec II,  
P06, #80629 (R)  
UH Registered Architect I,  
P13, #77005 (a)(R)  
UH Environmental Safety  
Spec II, P05, #81680 (a)(R)

CHART UPDATED  
JUL - 1 2000  
DATE \_\_\_\_\_

MAUKA/MAKAI  
UH Student Hsg Coord II,  
P07, #80598 (R)  
UH Student Hsg Coord I,  
P05, #80594 (R)  
Clerk-Typist II,  
SR8, #24249 (R), #23582 (R)  
Bldg Maint Worker I,  
BC9, #31245 (R), #13578 (R)  
Groundskeeper II,  
WS2, #31246 (R)

HALE ALOHA  
UH Student Hsg Coord II,  
P07, #80597 (R)  
Clerk-Steno II,  
SR9, #24250 (R)  
Bldg Maint Worker I,  
BC9, #31242 (R)  
Groundskeeper II,  
WS2, #24251 (R)  
UH Student Hsg Coord,  
#96507F (R)\*

HALE NOELANI  
UH Student Hsg Coord I,  
P05, #80924 (R)  
Clerk-Typist II,  
SR8, #28545 (R)  
Bldg Maint Worker I,  
BC9, #23493 (R)

HALE WAINANI  
UH Student Hsg Coord I,  
P05, #80595(R)  
Clerk-Typist II,  
SR8, #31244 (R)  
Groundskeeper II,  
WS2, #31243 (R)  
Bldg Maint Worker I,  
BC9, #110585 (R)

SECURITY  
Univ Security Officer I,  
SR14, #46108 (a)(R)

(a) Student Housing Services position assigned to and supervised by Campus Operations  
\*Pending Establishment

Office:  
UHM Student Services  
School and College Services

Chart: IV-F  
[CURRENT]

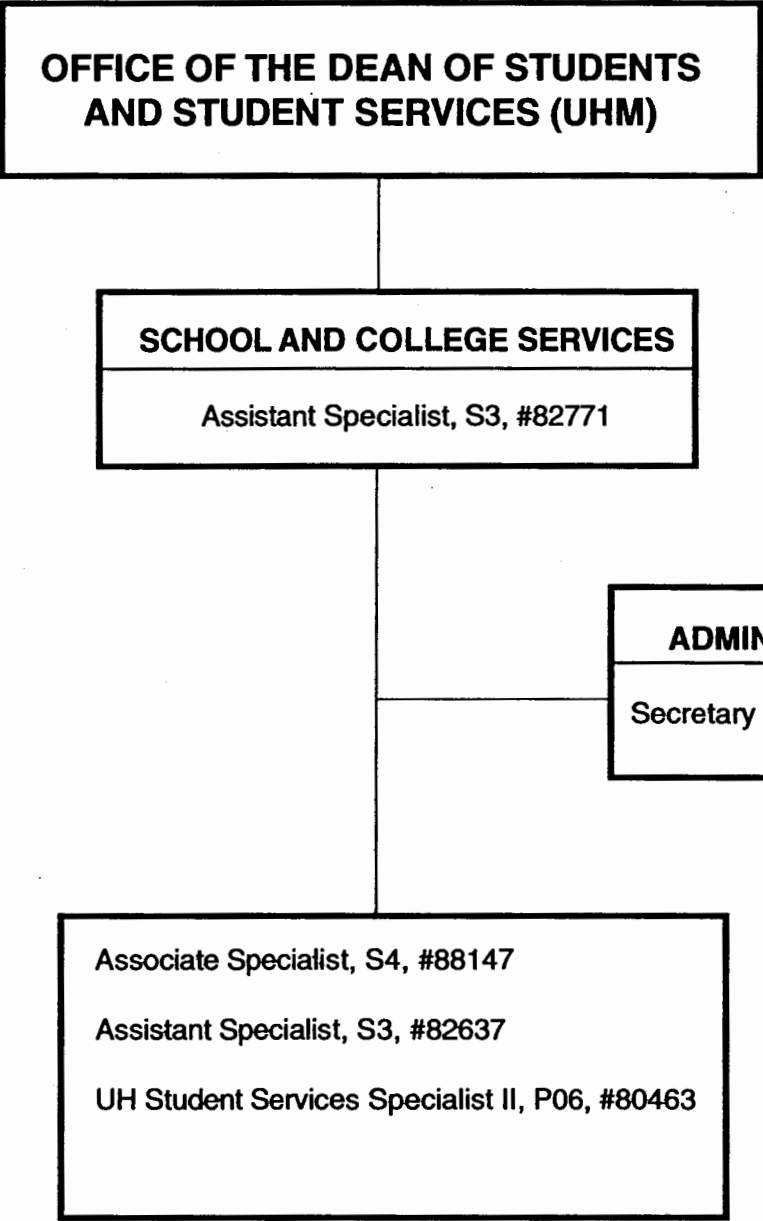


CHART UPDATED

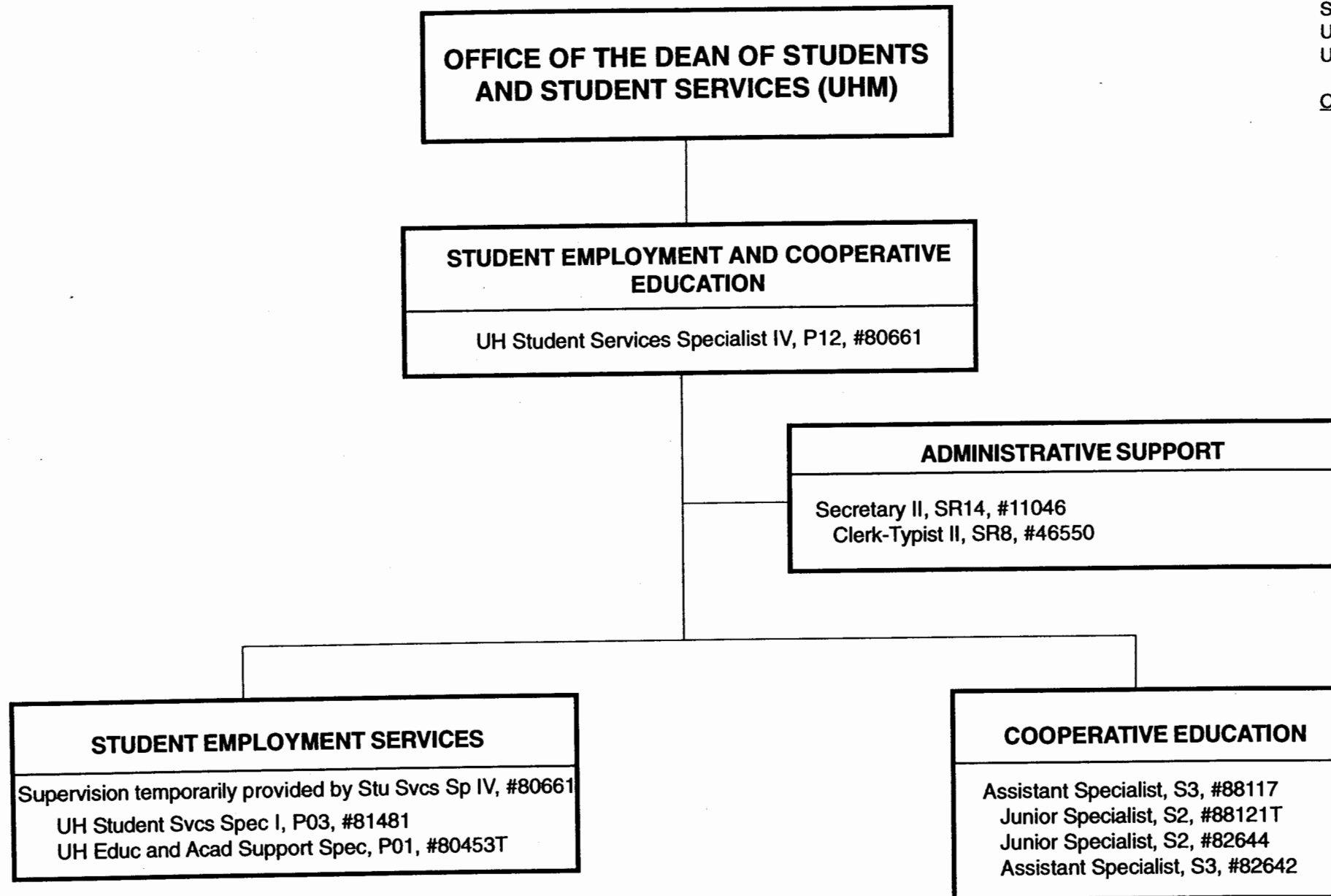
DATE JUL - 1 2000

Office:

**UHM Student Services  
Student Employment and  
Cooperative Education**

Chart: IV-G

[CURRENT]



**CHART UPDATED**  
**JUL - 1 2000**  
DATE \_\_\_\_\_

General Funds  
General Funds

7.00 (perm)  
2.00 (auth temp)

Office:  
UHM Student Services  
International Student  
Services

Chart: IV-H  
[CURRENT]

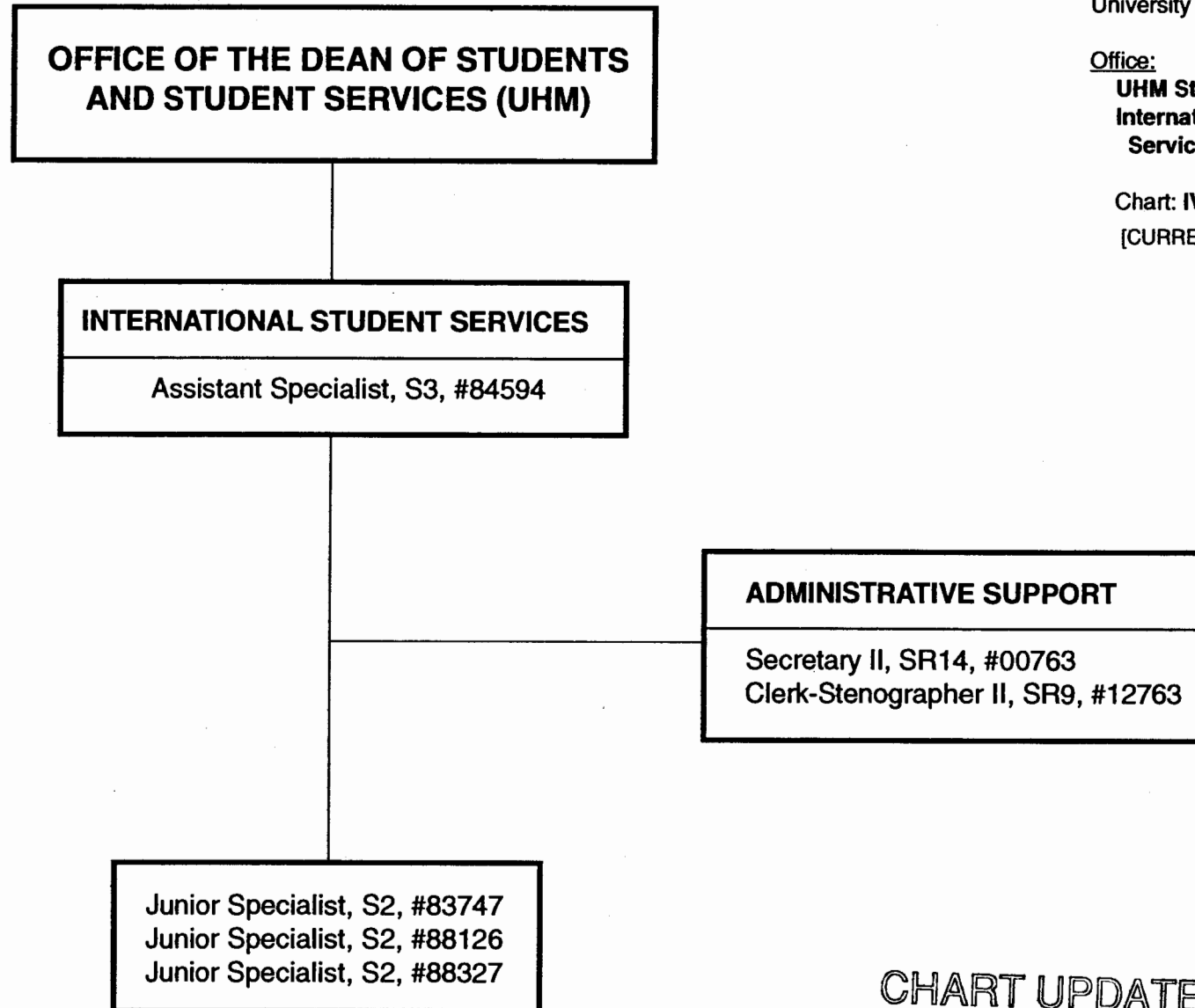


CHART UPDATED  
DATE JUL - 1 2000

General Funds 4.00\*

\*2.00 FTE (#88126, #88327 for Study Abroad  
transferred to Academic Affairs)

Office:  
UHM Student Services  
Career Services

Chart: IV-I  
[CURRENT]

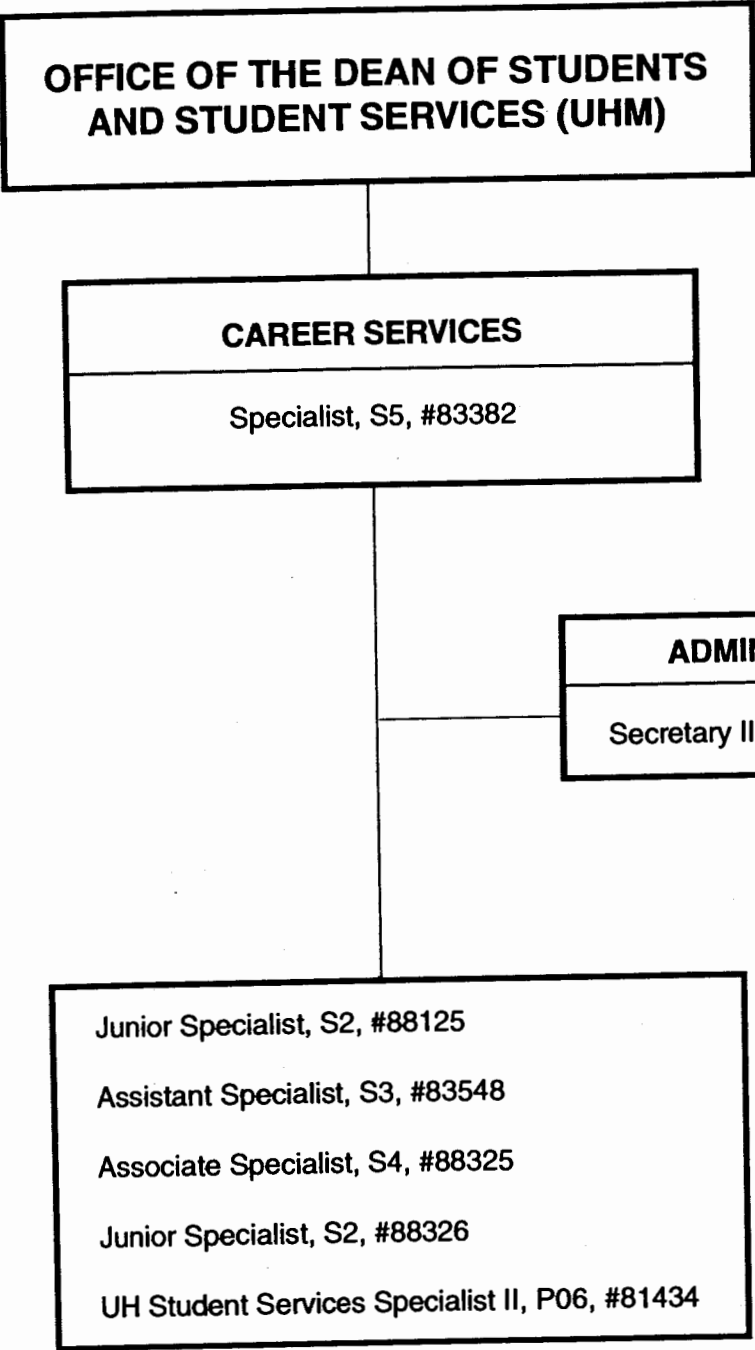


CHART UPDATED  
JUL - 1 2000  
DATE \_\_\_\_\_

Office:

**UHM Student Services  
Counseling and Student  
Development Center**

Chart: IV-J

[CURRENT]

**OFFICE OF THE DEAN OF STUDENTS  
AND STUDENT SERVICES (UHM)**

**COUNSELING AND STUDENT  
DEVELOPMENT CENTER**

Specialist, S5, #83151

**ADMINISTRATIVE SUPPORT**

Secretary II, SR14, #00746

**LEARNING ASSISTANCE**

Assistant Specialist, S3, #84554  
Assistant Specialist, S3, #88143

**TESTING**

UH Student Services Specialist II, P06, #80632

**COUNSELING**

Specialist, S5, #82048 (.50)  
Specialist, S5, #83635 (.50)  
Associate Specialist, S4, #82698  
Associate Specialist, S4, #83114  
Associate Specialist, S4, #84139

**CHART UPDATED**  
JUL - 1 2000

DATE \_\_\_\_\_

General Funds

9.00

Office:

**UHM Student Services  
University Health Services**

Chart: IV-K  
[CURRENT]

**OFFICE OF THE DEAN OF STUDENTS  
AND STUDENT SERVICES (UHM)**

**UNIVERSITY HEALTH SERVICES**

Specialist, S5, #82341

**PHARMACY**

UH Pharmacist, P12, #81877 (.25) (R)

**ADMINISTRATIVE SUPPORT**

Assistant Specialist, S3, #83539  
Secretary II, SR14, #15353  
Account Clerk III, SR11, #21512  
Medical Records Technician VI, SR13, #03723  
Clerk-Typist II, SR8, #35147 (.50)

**MEDICAL STAFF**

Specialist, S5, #84576 (.50) (R)  
Specialist, S5, #84576A (.50) (R)  
Specialist, S5, #83261 (.50) (R)  
Specialist, S5, #83397 (.50) (R)

**NURSING STAFF**

Registered Professional Nurse IV, SR22, #10312 (R)  
Registered Professional Nurse III, SR20, #13616 (R)  
Registered Professional Nurse III, SR20, #22672 (R)  
Registered Professional Nurse III, SR20, #13615 (R)  
Registered Professional Nurse III, SR20, #18091 (R)

**FAMILY PLANNING CLINIC**

Registered Professional Nurse V,  
SR24, #41706 (R)

**LABORATORY**

UH Medical Technician, P08, #80671 (.50)

**CHART UPDATED**

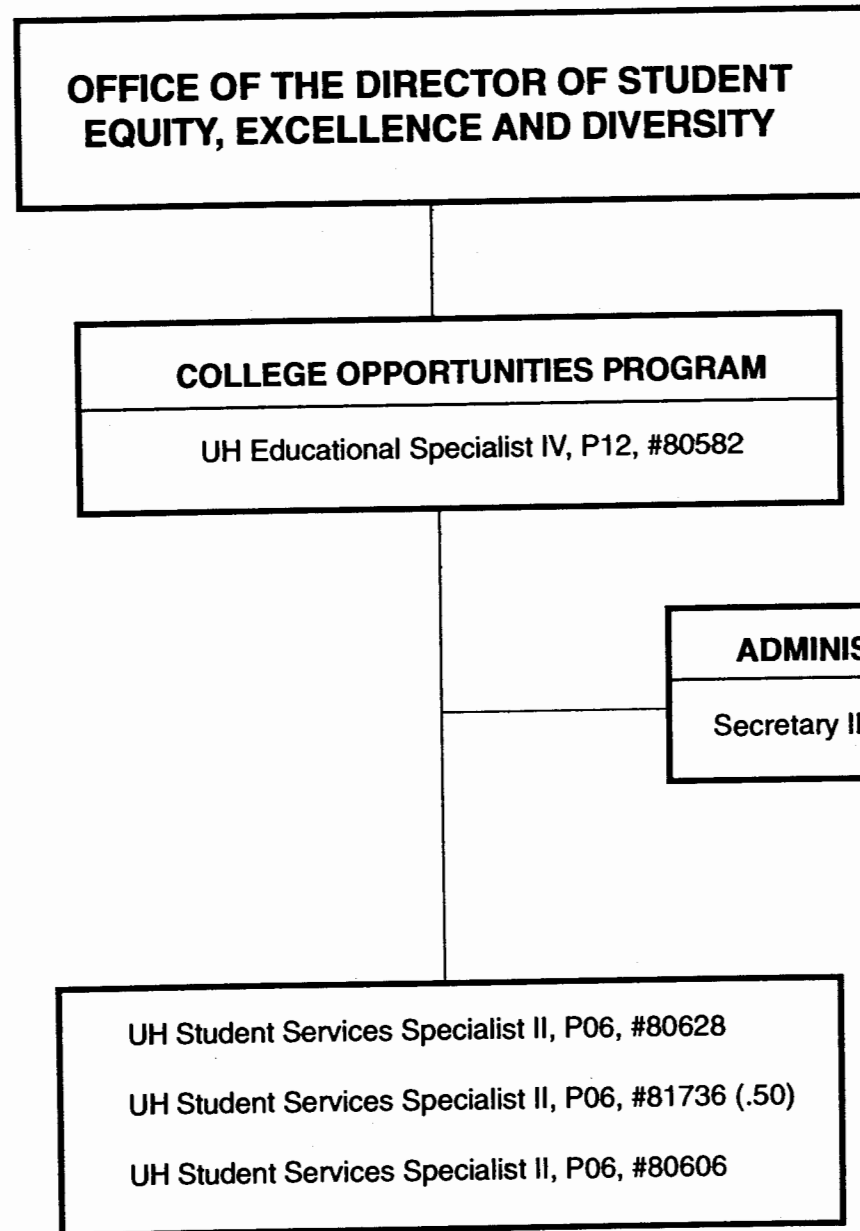
DATE JUL - 1 2000

General Funds  
Revolving Funds

6.00  
8.25

Office:  
**UHM Student Services  
College Opportunities  
Program**

Chart: IV-L  
[CURRENT]



**CHART UPDATED**  
DATE JUL - 1 2000

General Funds

4.50

**OFFICE OF THE DIRECTOR OF STUDENT  
EQUITY, EXCELLENCE AND DIVERSITY**

WOMEN'S CENTER
Junior Specialist, S2, #88123T, (.50) Junior Specialist, S2, #88144T, (.50)

State of Hawai'i  
University of Hawai'i  
University of Hawai'i at Mānoa

Office:  
UHM Student Services  
Women's Center

Chart: IV-M  
[CURRENT]

CHART UPDATED  
DATE JUL - 1 2000

Authorized Temporary Positions

General Funds 1.00 (auth temp)

**OFFICE OF THE DEAN OF STUDENTS  
AND STUDENT SERVICES (UHM)**

**CHILDREN'S CENTER**  
Specialist, S5, #88318

**ADMINISTRATIVE SUPPORT**  
UH Early Childhood Spec IV, P09, #80232  
UH Administrative Officer I, P03, #80739(R)

**TEACHING STAFF**  
UH Early Childhood Spec IV, P09, #80029  
UH Early Childhood Spec III, P07, #80109  
UH Early Childhood Spec II, P05, #80233  
UH Early Childhood Spec III, P07, #80234T  
UH Early Childhood Spec II, P05, #80424T  
UH Early Childhood Spec III, P07, #80455T  
UH Early Childhood Spec III, P07, #80541 (R)  
UH Early Childhood Spec II, P05, #80588 (R)  
UH Early Childhood Spec II, P05, #80611 (R)  
UH Early Childhood Spec IV, P09, #80496T (.75)

State of Hawai'i  
University of Hawai'i  
University of Hawai'i at Mānoa

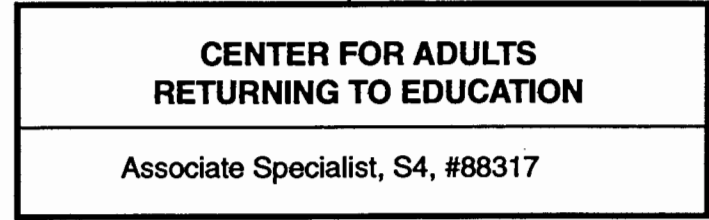
Office:  
**UHM Student Services  
Children's Center**

Chart: IV-N  
[CURRENT]

**CHART UPDATED**  
DATE JUL - 1 2000

General Funds	5.00 (perm)
General Funds	3.75 (auth temp)
Revolving Funds	4.00

**OFFICE OF THE DIRECTOR OF STUDENT  
EQUITY, EXCELLENCE AND DIVERSITY**



State of Hawai'i  
University of Hawai'i  
University of Hawai'i at Mānoa

Office:  
**UHM Student Services  
Center for Adults  
Returning to Education**

Chart: **IV-O**  
[CURRENT]

**CHART UPDATED**  
DATE JUL - 1 2000

**OFFICE OF THE DIRECTOR OF STUDENT  
EQUITY, EXCELLENCE AND DIVERSITY**

**HAWAI'I OPPORTUNITY PROGRAM  
IN EDUCATION**

State of Hawai'i  
University of Hawai'i  
University of Hawai'i at Mānoa

Office:

**UHM Student Services  
Hawai'i Opportunity  
Program in Education**

Chart: IV-P  
[CURRENT]

**CHART UPDATED**  
DATE JUL - 1 2000

**OFFICE OF THE DIRECTOR OF STUDENT  
EQUITY, EXCELLENCE AND DIVERSITY**

OPERATION KUA'ANA
UH Educational Specialist III, P09, #81904 UH Student Services Specialist I, P03, #81919

State of Hawai'i  
University of Hawai'i  
University of Hawai'i at Mānoa

Office:  
**UHM Student Services  
Operation Kua'ana**

Chart: IV-Q  
[CURRENT]

**CHART UPDATED**  
DATE JUL - 1 2000

**OFFICE OF THE DIRECTOR OF STUDENT  
EQUITY, EXCELLENCE AND DIVERSITY**

State of Hawai'i  
University of Hawai'i  
University of Hawai'i at Mānoa

Office:  
UHM Student Services  
Office of Multicultural  
Student Services

Chart: IV-R  
[CURRENT]

**OFFICE OF MULTICULTURAL  
STUDENT SERVICES**

UH Educational Specialist III, P09, #80517

**ADMINISTRATIVE SUPPORT**

Clerk-Typist II, SR8, #43052

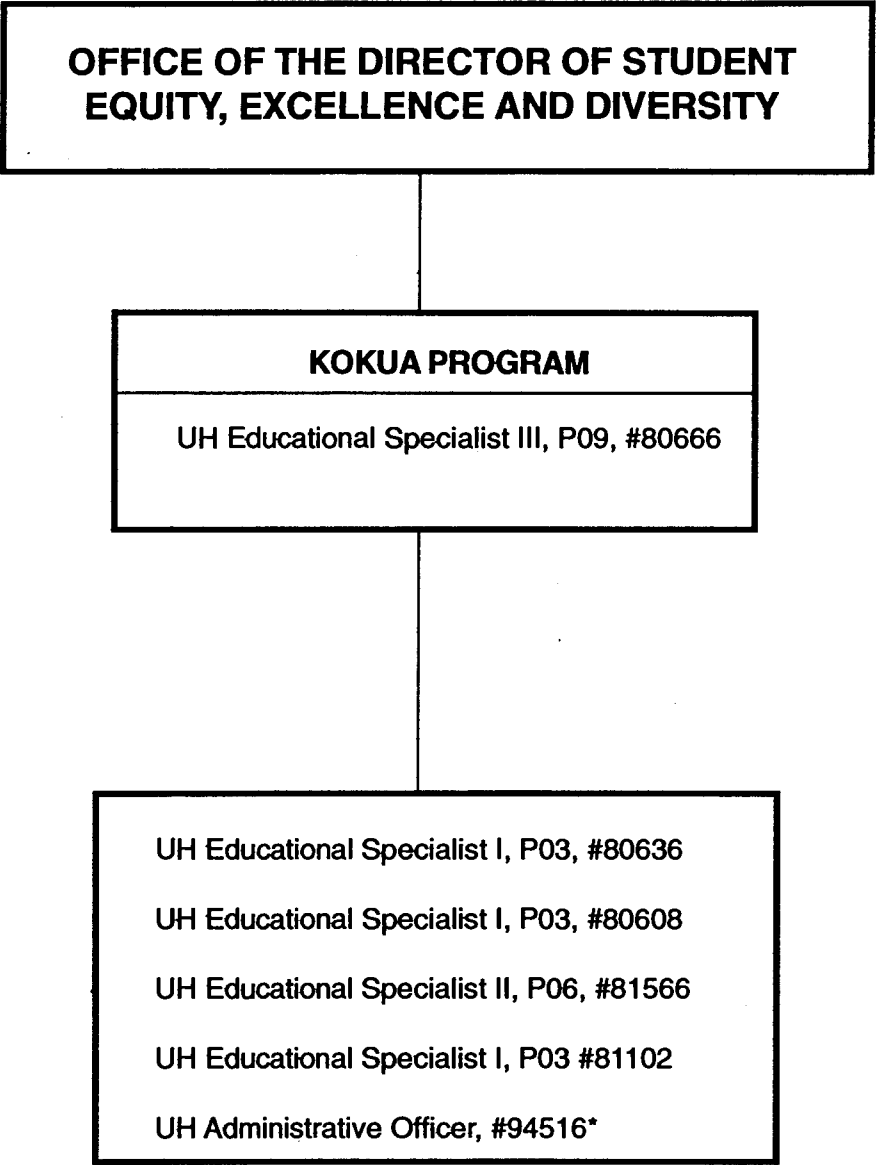
Associate Specialist, S4, #82281

UH Student Services Specialist I, P03, #81799

UH Student Services Specialist I, P03, #81801

**CHART UPDATED**  
**JUL - 1 2000**

DATE \_\_\_\_\_



Office:  
**UHM Student Services**  
**KOKUA Program**

Chart: **IV-S**  
[CURRENT]

CHART UPDATED

DATE JUL - 1 2000

\*Pending establishment