

SENIOR VICE PRESIDENT FOR RESEARCH AND
DEAN OF THE GRADUATE DIVISION

STATE OF HAWAII
UNIVERSITY OF HAWAII
UNIVERSITY OF HAWAII AT MANOA
COLLEGE OF TROPICAL AGRICULTURE AND HUMAN
RESOURCES

OFFICE OF THE DEAN*
CHART XLI-A

ORGANIZATIONAL CHART
CHART XLI

OFFICE OF PUBLICATIONS AND INFORMATION
CHART XLI-B

OFFICE OF ADMINISTRATIVE SERVICES
CHART XLI-C

OFFICE OF PLANNING AND MANAGEMENT SYSTEMS
CHART XLI-D

OFFICE OF THE ASSOCIATE DEAN
FOR ACADEMIC AND
STUDENT AFFAIRS
CHART XLI-E

OFFICE OF THE ASSOCIATE DEAN
AND ASSOCIATE DIRECTOR
FOR RESEARCH
CHART XLI-F

OFFICE OF THE ASSOCIATE DEAN
AND ASSOCIATE DIRECTOR
FOR COOPERATIVE EXTENSION
CHART XLI-G

COUNTY ADMINISTRATION
CHART XLI-Q,R,S,T,U,V,W

EXTENSION PROGRAMS
CHART XLI-N

| | |
|---|--|
| FAMILY AND CONSUMER SCIENCES CENTER ON THE FAMILY 4-H OFFICE HUMAN NUTRITION, FOOD AND ANIMAL SCIENCES MOLECULAR BIOSCIENCES AND BIOSYSTEMS ENGINEERING NATURAL RESOURCES & ENVIRONMENTAL MANAGEMENT PLANT AND ENVIRONMENTAL PROTECTION SCIENCES TROPICAL PLANT & SOIL SCIENCE | CHART XLI-H CHART XLI-O CHART XLI-P CHART XLI-I CHART XLI-J CHART XLI-K CHART XLI-L CHART XLI-M |
|---|--|

CHART UPDATED
JUL - 1 2000
DATE _____

* & Director of Research and Cooperative Extension

STATE OF HAWAII
UNIVERSITY OF HAWAII
UNIVERSITY OF HAWAII AT MANOA
COLLEGE OF TROPICAL AGRICULTURE AND HUMAN
RESOURCES

OFFICE OF THE DEAN
POSITION ORGANIZATION CHART: XLI-A

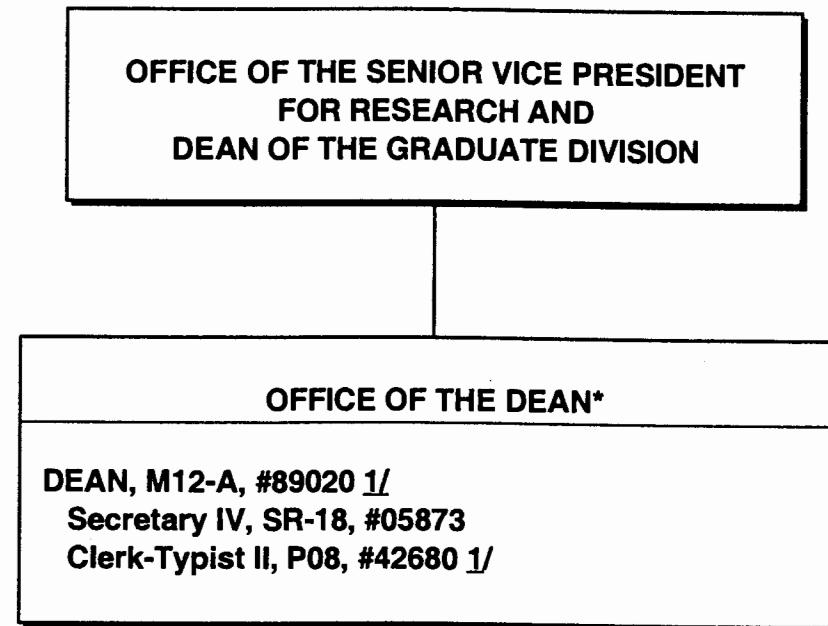


CHART UPDATED
DATE JUL - 1 2000

* & Director of Research and Cooperative Extension
1/ Position to be redescribed

STATE OF HAWAII
UNIVERSITY OF HAWAII
UNIVERSITY OF HAWAII AT MANOA
COLLEGE OF TROPICAL AGRICULTURE AND HUMAN RESOURCES

OFFICE OF PUBLICATIONS AND INFORMATION
POSITION ORGANIZATION CHART: XLI-B

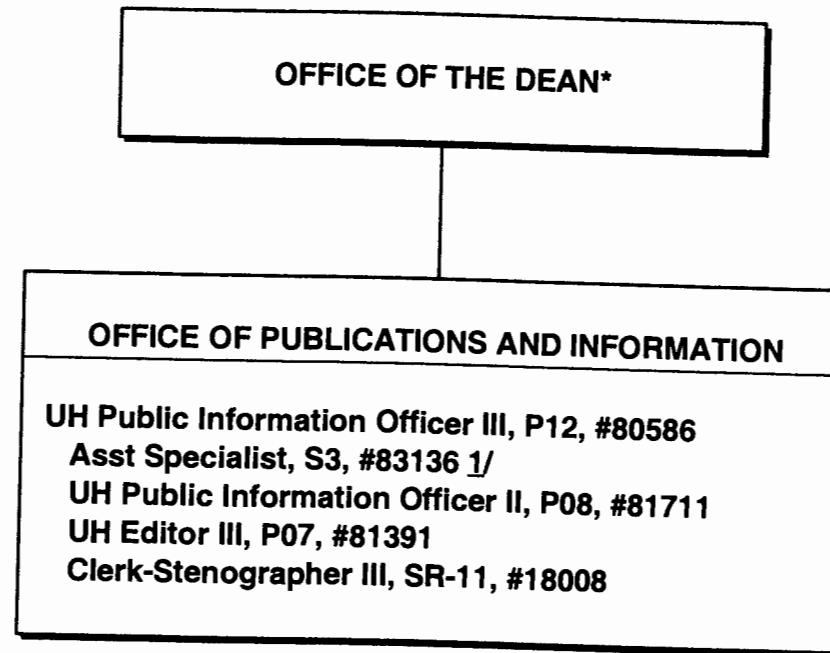


CHART UPDATED
DATE JUL - 1 2000

* & Director of Research and Cooperative Extension
1/ Position to be redescribed

STATE OF HAWAII
UNIVERSITY OF HAWAII
UNIVERSITY OF HAWAII AT MANOA
COLLEGE OF TROPICAL AGRICULTURE AND HUMAN RESOURCES

OFFICE OF ADMINISTRATIVE SERVICES
POSITION ORGANIZATION CHART: XLI-C

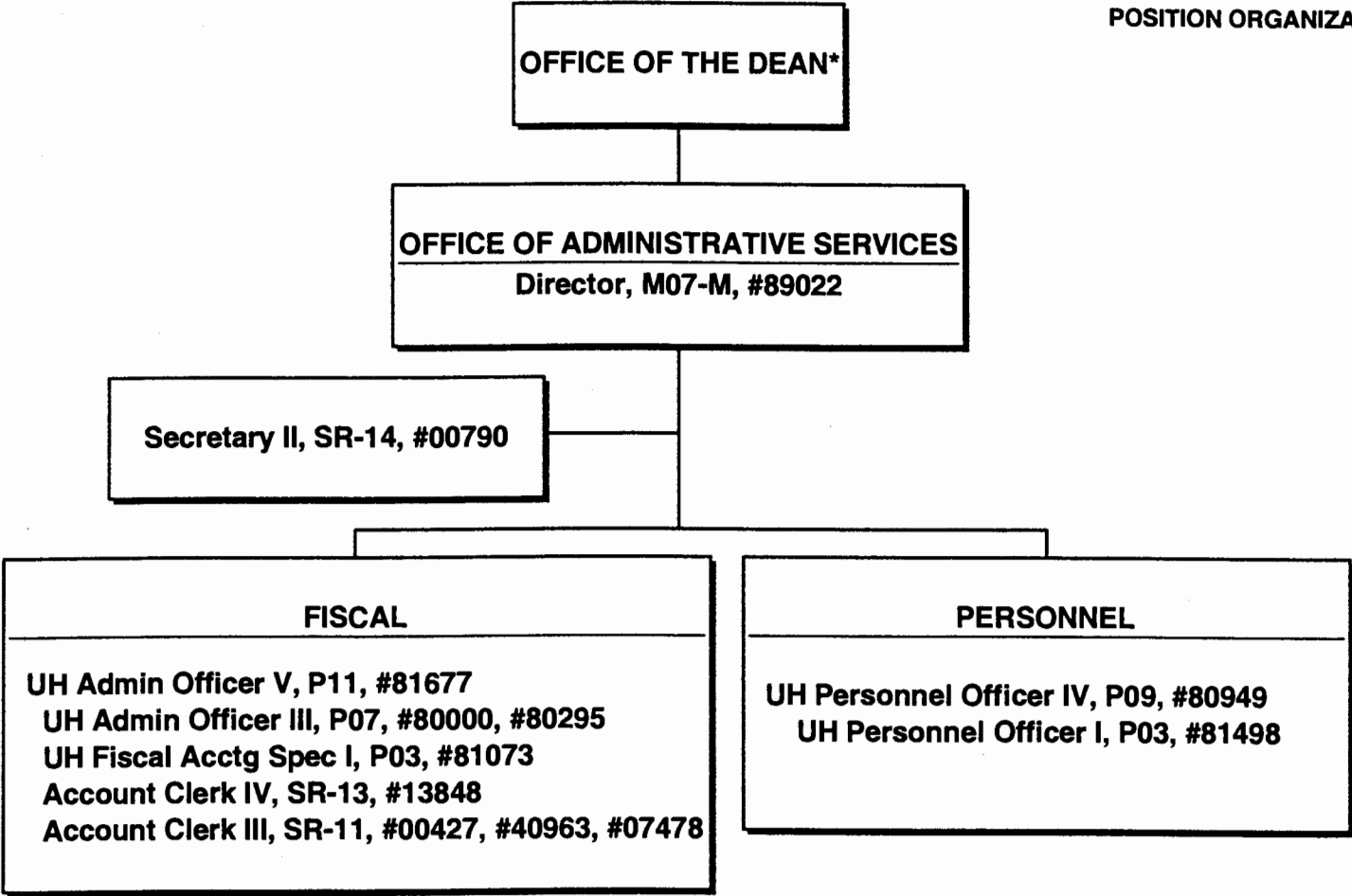


CHART UPDATED
JUL - 1 2000
DATE _____

*& Director of Research and Cooperative Extension

STATE OF HAWAII
UNIVERSITY OF HAWAII
UNIVERSITY OF HAWAII AT MANOA
COLLEGE OF TROPICAL AGRICULTURE AND HUMAN RESOURCES

OFFICE OF PLANNING AND MANAGEMENT SYSTEMS
POSITION ORGANIZATION CHART: XLI-D

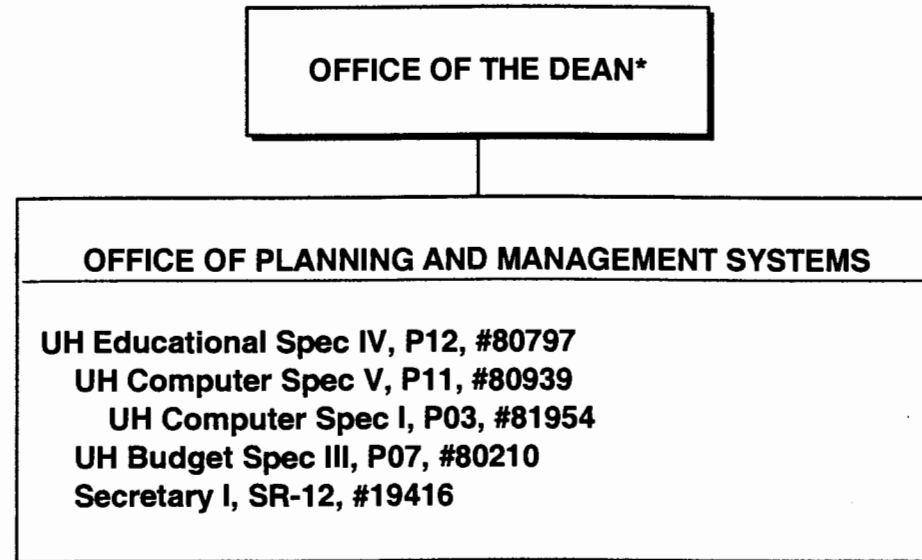


CHART UPDATED
DATE JUL - 1 2000

*& Director of Research and Cooperative Extension

STATE OF HAWAII
UNIVERSITY OF HAWAII
UNIVERSITY OF HAWAII AT MANOA
COLLEGE OF TROPICAL AGRICULTURE AND HUMAN RESOURCES

OFFICE OF THE ASSOCIATE DEAN FOR ACADEMIC AND STUDENT
AFFAIRS
POSITION ORGANIZATION CHART: XLI-E

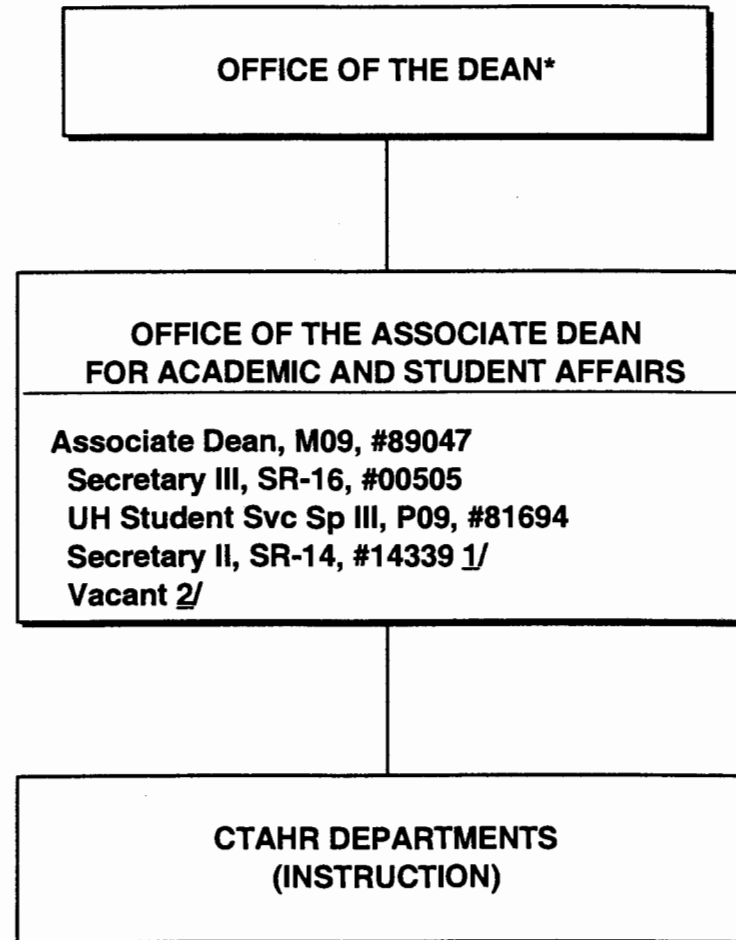


CHART UPDATED
DATE JUL - 1 2000

* & Director of Research and Cooperative Extension

1/ Position to be redescribed

2/ Vacant Positions in Manoa Pool:

Instructor #82906

Researcher #84114 (.20)

Assoc Researcher #84433 (.40)

Specialist #83990 (.25)

Assoc Specialist #84912 (.52)

Clerk-Typist II #16026, #45478 (.75)

STATE OF HAWAII
UNIVERSITY OF HAWAII
UNIVERSITY OF HAWAII AT MANOA
COLLEGE OF TROPICAL AGRICULTURE AND HUMAN RESOURCES

OFFICE OF THE ASSOCIATE DEAN AND ASSOCIATE DIRECTOR FOR RESEARCH
POSITION ORGANIZATION CHART: XLI-F

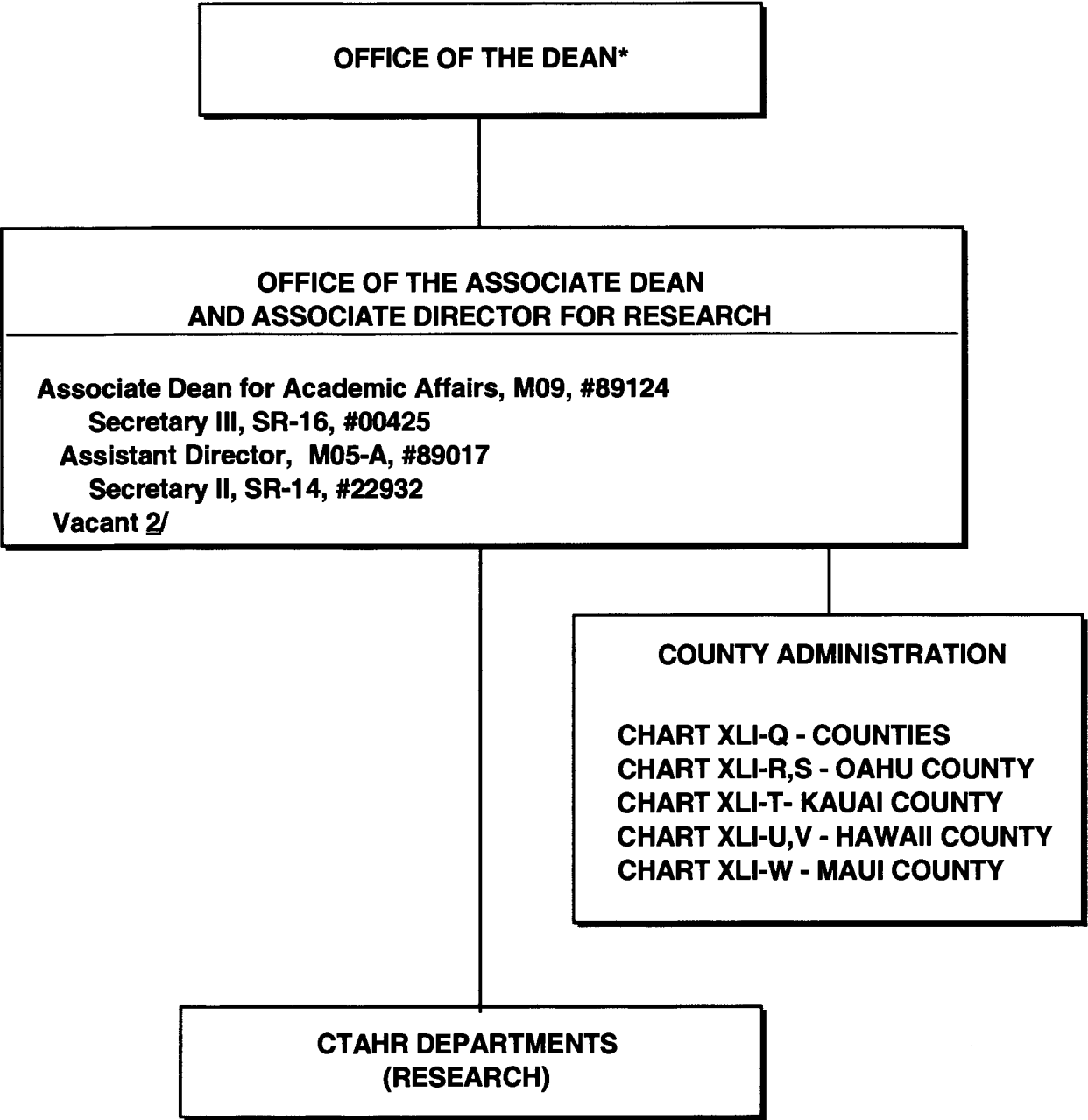
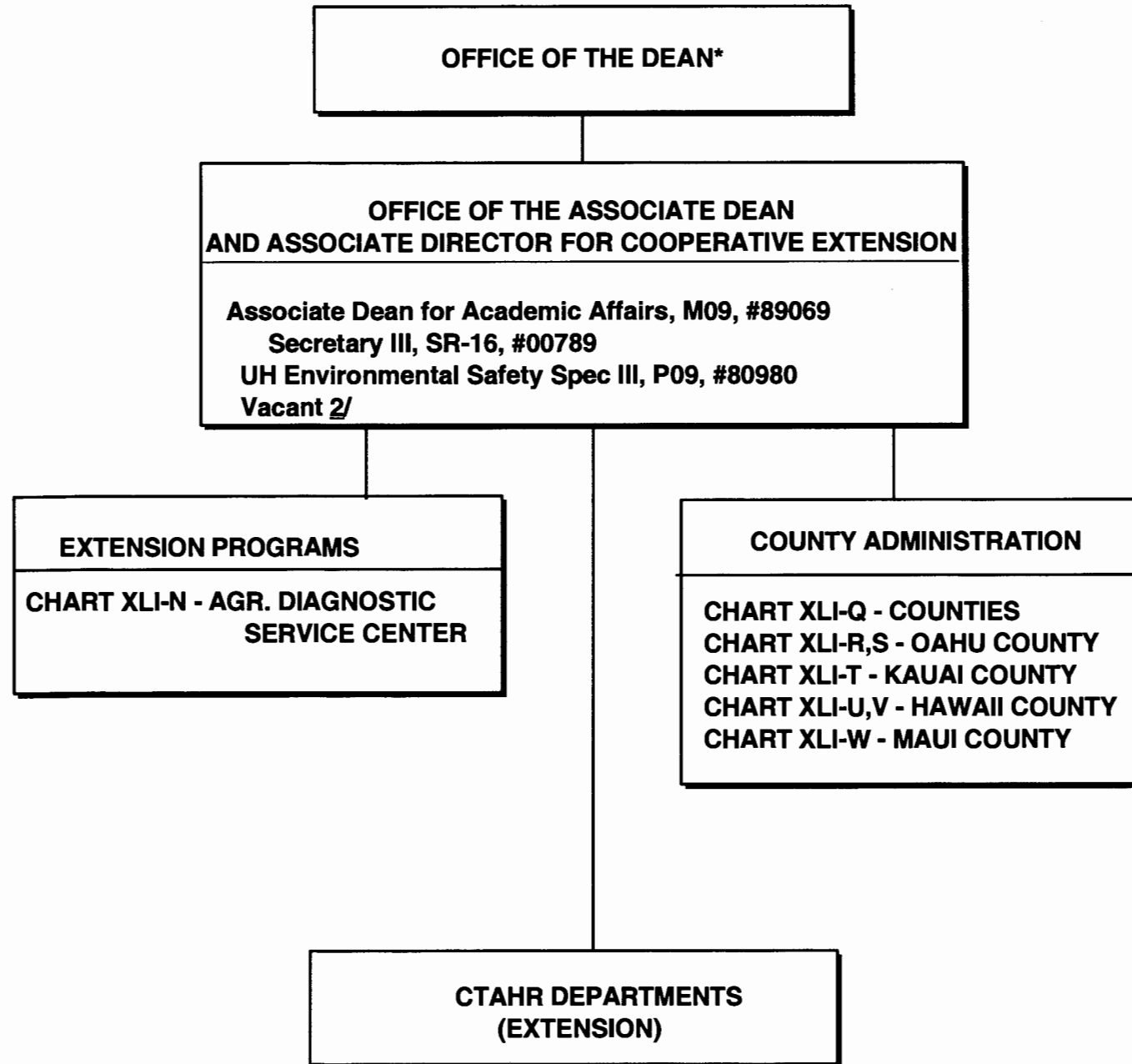


CHART UPDATED
DATE JUL - 1 2000

* & Director of Research and Cooperative Extension
1/ Position to be redescribed.
2/ Vacant Positions in Manoa Pool:
Researcher #84114 (.80), #84317 (.80)



STATE OF HAWAII
UNIVERSITY OF HAWAII
UNIVERSITY OF HAWAII AT MANOA
COLLEGE OF TROPICAL AGRICULTURE AND HUMAN RESOURCES

OFFICE OF THE ASSOCIATE DEAN AND ASSOCIATE DIRECTOR
FOR COOPERATIVE EXTENSION
POSITION ORGANIZATION CHART: XLI-G

CHART UPDATED
DATE JUL - 1 2000

* & Director of Research and Cooperative Extension

1/ Position to be redescribed.

2/ Vacant Positions in Manoa Pool:

Specialist #83990 (.75)

Assoc Spec #84912 (.10)

Asst Spec #83135

Extension Agent #84351, #83736, #82997

Assoc Ext Agent #84654

Jr. Ext Agent #83178

Researcher #84317 (.20)

**OFFICES OF THE ASSOCIATE DEANS AND DIRECTORS
FOR ACADEMIC AND STUDENT AFFAIRS,
RESEARCH, AND COOPERATIVE EXTENSION**

DEPARTMENT OF FAMILY AND CONSUMER SCIENCES

Chairperson (Appointed from among faculty positions)

Secretary II, SR-14, #22849

Clerk-Steno II, SR-09, #21208

Clerk-Typist II, SR-08, #04108

Faculty 1/

Oahu

**#82074, #82336, #82392, #82485, #82699, #82869,
#83220, #83242, #83343, #83525, #83666, #83843(.40),
#84070, #84082, #84648, #84662, #84685,
#84914(.50), #85151, #85421, #85476**

Hawaii

#83267, #84610

Kauai

#82175, #83816

Maui

#83728, #84913

Graduate Assistant, GA, #88134 (.50), #88241 (.50)

**STATE OF HAWAII
UNIVERSITY OF HAWAII
UNIVERSITY OF HAWAII AT MANOA
COLLEGE OF TROPICAL AGRICULTURE AND HUMAN RESOURCES**

**DEPARTMENT OF FAMILY AND CONSUMER SCIENCES
POSITION ORGANIZATION CHART: XLI-H**

CHART UPDATED
DATE JUL - 1 2000

1/ Research FTE: 1.20, Extension FTE: 14.10, Instruction FTE: 10.60

OFFICES OF THE ASSOCIATE DEANS AND DIRECTORS
FOR ACADEMIC AND STUDENT AFFAIRS,
RESEARCH, AND COOPERATIVE EXTENSION

STATE OF HAWAII
UNIVERSITY OF HAWAII
UNIVERSITY OF HAWAII AT MANOA
COLLEGE OF TROPICAL AGRICULTURE AND HUMAN RESOURCES

DEPARTMENT OF HUMAN NUTRITION, FOOD AND ANIMAL SCIENCES
POSITION ORGANIZATION CHART: XLI-I

DEPARTMENT OF HUMAN NUTRITION, FOOD AND ANIMAL SCIENCES

Chairperson (Appointed from among faculty positions)

Secretary II, SR-14, #00400

Clerk-Typist II, SR-08, #12195, #15513, #42682

Faculty 2/

Oahu

#82107, #82248, #82529, #82945, #83017, #83553, #83633, #83742, #83830, #83851 (.50),
#83862, #84227, #84228, #84323, #84454, #84496, #84512, #84668, #84919
#84920, #87552

Maui

#84163

Hawaii

#84158, #84276, #84297

Kauai

#82363

UH Research Associate V, P09, #80410

UH Computer Specialist IV, P09, #80037

Graduate Asst, GA-R, #88088 (.50), #88165 (.50), #88303 (.50), #88438 (.50)

Agr Research Technician VI, SR-18, #00428

Agr Research Technican V, SR-16, #00395, #00396, #00432, #11024

Agr Research Technician IV, SR-14, #00433

Agr Research Technician III, SR-11, #00418, #00434, #03712

Agr Research Aid II, SR-09, #00441, #04481, #04484, #15515

Lab Assistant III, SR-10, #00707

Equipment Operator III, BC-09, #00419

CHART UPDATED
DATE JUL - 1 2000

1/ Position to be redescribed

2/ Research FTE: 8.15, Extension FTE: 10.35, Instruction FTE: 8.00

STATE OF HAWAII
UNIVERSITY OF HAWAII
UNIVERSITY OF HAWAII AT MANOA
COLLEGE OF TROPICAL AGRICULTURE AND HUMAN RESOURCES

DEPARTMENT OF MOLECULAR BIOSCIENCES AND BIOSYSTEMS
ENGINEERING
POSITION ORGANIZATION CHART: XLI-J

OFFICES OF THE ASSOCIATE DEANS AND DIRECTORS
FOR ACADEMIC AND STUDENT AFFAIRS,
RESEARCH, AND COOPERATIVE EXTENSION

DEPARTMENT OF MOLECULAR BIOSCIENCES AND BIOSYSTEMS ENGINEERING

Chairperson (Appointed from among faculty positions)

Secretary II, SR-14, #12960, 00402 1/

Clerk Typist II, SR-08, #00803, #14758

Faculty

Oahu

#82027, #82094, #82432, #82848(.50), #82919, #83034, #83184, #83399, #83682, #83690, #83765,
#83767, #83882, #83968, #84193, #84325, #84477, #84600, #84617, #84631, #87523

UH Mechanical Engineer I, P12, #80784

UH Research Associate V, P09, #80323, #80409

UH Research Associate IV, P07, #80324,

UH Research Associate III, P05, #81325

Graduate Assistant, GA-R, #88219 (.50), #88509 (.50), #88630 (.50), #88643 (.50)

Food Processor IV, F109B, #07979

Agr Eqp Dev Wkg Supv, WS-13, #05729

Agr Lab Technician I, BC-12, #05730

CHART UPDATED
DATE JUL - 1 2000

1/ Position to be redescribed

2/ Research FTE: 14.35, Extension FTE: 2.35, Instruction FTE: 3.80

STATE OF HAWAII
UNIVERSITY OF HAWAII
UNIVERSITY OF HAWAII AT MANOA
COLLEGE OF TROPICAL AGRICULTURE AND HUMAN RESOURCES

DEPARTMENT OF NATURAL RESOURCES AND ENVIRONMENTAL
MANAGEMENT
POSITION ORGANIZATION CHART: XLI-K

OFFICES OF THE ASSOCIATE DEANS AND DIRECTORS
FOR ACADEMIC AND STUDENT AFFAIRS,
RESEARCH, AND COOPERATIVE EXTENSION

DEPARTMENT OF NATURAL RESOURCES AND ENVIRONMENTAL MANAGEMENT

Chairperson (Appointed from among faculty positions)

Secretary II, SR-14, #05838

Clerk-Steno III, SR-11, #03397

Clerk Typist II, SR-08, #42681

Faculty 1/

Oahu

#82058, #82598, #82772, #83012, #83117, #83629, #83824, #84120, #84216,
#84449, #84488, #84872, #84915

Hawaii

#82224, #82373, #83459, #84911

Kauai

#82516

UH Research Associate III, P05, #80320, #80391 2/

Graduate Assistant, GA, #88028 (.50), #88181 (.50), #88431 (.50), #88494 (.50)

Agr Research Technician IV, SR-14, #00398

CHART UPDATED
DATE JUL - 1 2000

1/ Research FTE: 9.40, Extension FTE: 6.60, Instruction FTE: 2.00
2/ To be redescribed.

OFFICES OF THE ASSOCIATE DEANS AND DIRECTORS
FOR ACADEMIC AND STUDENT AFFAIRS,
RESEARCH, AND COOPERATIVE EXTENSION

STATE OF HAWAII
UNIVERSITY OF HAWAII
UNIVERSITY OF HAWAII AT MANOA
COLLEGE OF TROPICAL AGRICULTURE AND HUMAN
RESOURCES

DEPARTMENT OF PLANT AND ENVIRONMENTAL PROTECTION
SCIENCES
POSITION ORGANIZATION CHART: XLI-L

DEPARTMENT OF PLANT AND ENVIRONMENTAL PROTECTION SCIENCES

Chairperson (Appointed from among faculty positions)

Secretary II, SR-14, #07477, 00801 ^{1/}

Clerk-Steno III, SR-11, #00794

Clerk-Steno II, SR-09, #15509

Faculty ^{2/}

Oahu

#82047, #82139, #82238, #82505, #82550, #82865, #82866,
#82976, #83067, #83320, #83513, #83770, #83884, #84006,
#84041, #84138, #84316, #84388, #85510, #87443

Maui

#86034, #83462, #85530

Hawaii

#82985, #82722, #83255, #83542, #84910, #85538

Kauai

#83840, #85505

UH Educational Specialist III, P09, #80250

UH Research Associate V, P09, #80385, #80388

UH Research Associate IV, P07, #80310, #80386, #81178, #81311

UH Research Associate III, P05, #81313

Graduate Assistant, GA-R, #84932 (.50), #88576 (.50)

Graduate Assistant, GA, #88410 (.50), #88486 (.50)

Agr Research Technician V, SR-16, #00442

Agr Research Technician IV, SR-14, #24270

Agr Research Technician III, SR-11, #24269

CHART UPDATED

DATE JUL - 1 2000

^{1/} Position to be redescribed.

^{2/} Research FTE: 16.10, Extension FTE: 12.90, Instruction FTE: 3.00

OFFICES OF THE ASSOCIATE DEANS AND DIRECTORS
FOR ACADEMIC AND STUDENT AFFAIRS,
RESEARCH, AND COOPERATIVE EXTENSION

STATE OF HAWAII
UNIVERSITY OF HAWAII
UNIVERSITY OF HAWAII AT MANOA
COLLEGE OF TROPICAL AGRICULTURE AND HUMAN RESOURCES

DEPARTMENT OF TROPICAL PLANT AND SOIL SCIENCE
POSITION ORGANIZATION CHART: XLI-M

DEPARTMENT OF TROPICAL PLANT AND SOIL SCIENCE

Chairperson (Appointed from among faculty positions)

Secretary II, SR-14, #00793, #07872 1/, #15512 1/

Clerk-Steno III, SR-11, #00399

Faculty 2/

Oahu

#82023, #82181, #82240, #82313, #82464, #82554,
#82704, #82747, #83142, #83260, #83304, #83388, #83740,
#83785, #83938, #84067, #84171, #84306, #84321,
#84408, #84420, #84481, #84501, #84640, #84916, #85555

Maui

#82881, #83848, #84530, #85477, #87584

Hawaii

#83054, #82951, #83073, #83286, #83515, #84354, #85542

Kauai

#82196, #84500

UH Educational Specialist III, P09, #80249

UH Research Associate V, P09, #80270, #80313, #81362

UH Research Associate II, P03, #80311

Graduate Assistant, GA-R, #88171 (.50), #88423 (.50), #88565 (.50)

Agr Research Technician V, SR-16, #11019

Agr Research Technician IV, SR-14, #05392

Agr Research Technician III, SR-11, #00397

CHART UPDATED
DATE JUL - 1 2000

1/Position to be redescribed.

2/Research FTE: 17.63, Extension FTE: 17.90, Instruction FTE: 4.47

STATE OF HAWAII
UNIVERSITY OF HAWAII
UNIVERSITY OF HAWAII AT MANOA
COLLEGE OF TROPICAL AGRICULTURE AND HUMAN RESOURCES

AGRICULTURAL DIAGNOSTIC SERVICE CENTER
POSITION ORGANIZATION CHART: XLI-N

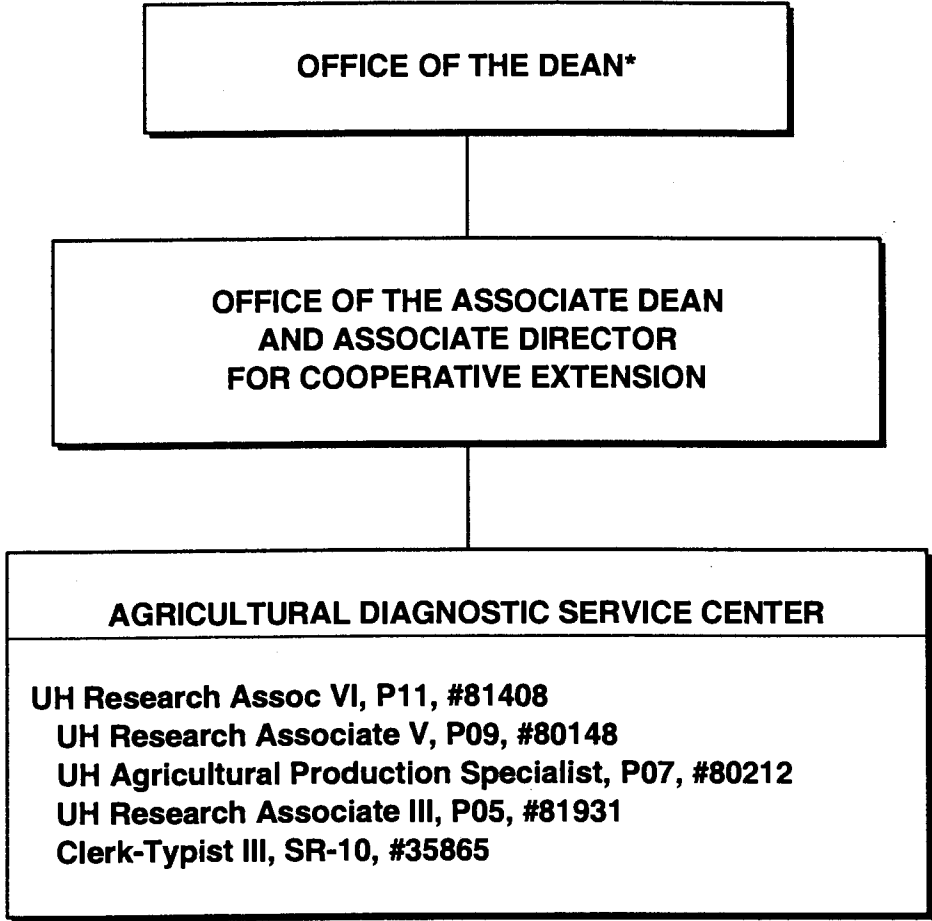


CHART UPDATED
DATE JUL - 1 2000

* & Director of Research and Cooperative Extension

STATE OF HAWAII
UNIVERSITY OF HAWAII
UNIVERSITY OF HAWAII AT MANOA
COLLEGE OF TROPICAL AGRICULTURE AND HUMAN RESOURCES

CENTER ON THE FAMILY
POSITION ORGANIZATION CHART: XLI-O

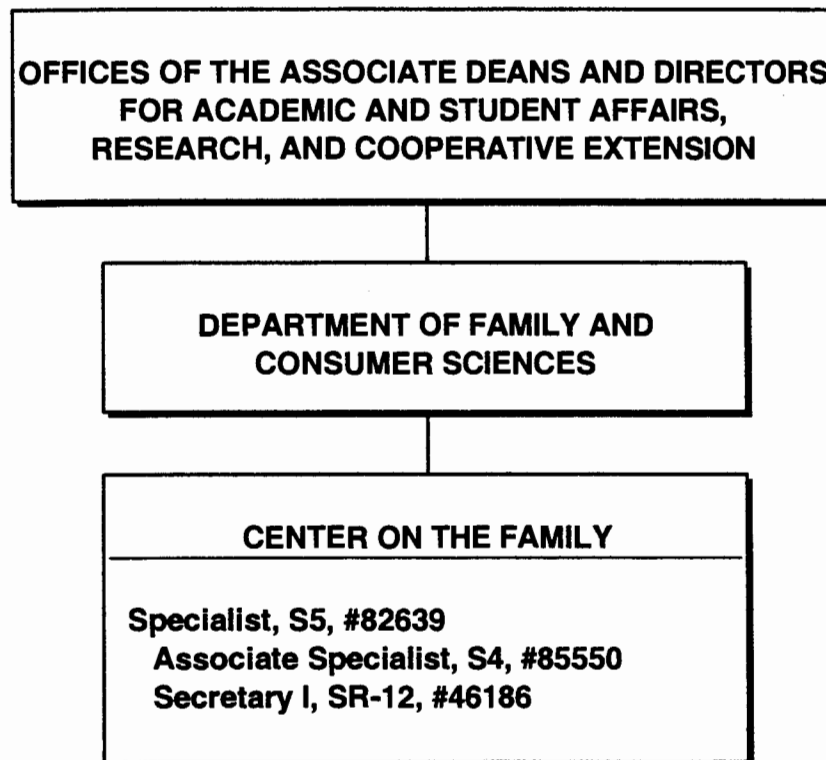


CHART UPDATED
DATE JUL - 1 2000

STATE OF HAWAII
UNIVERSITY OF HAWAII
UNIVERSITY OF HAWAII AT MANOA
COLLEGE OF TROPICAL AGRICULTURE AND HUMAN RESOURCES

4-H OFFICE
POSITION ORGANIZATION CHART: XLI-P

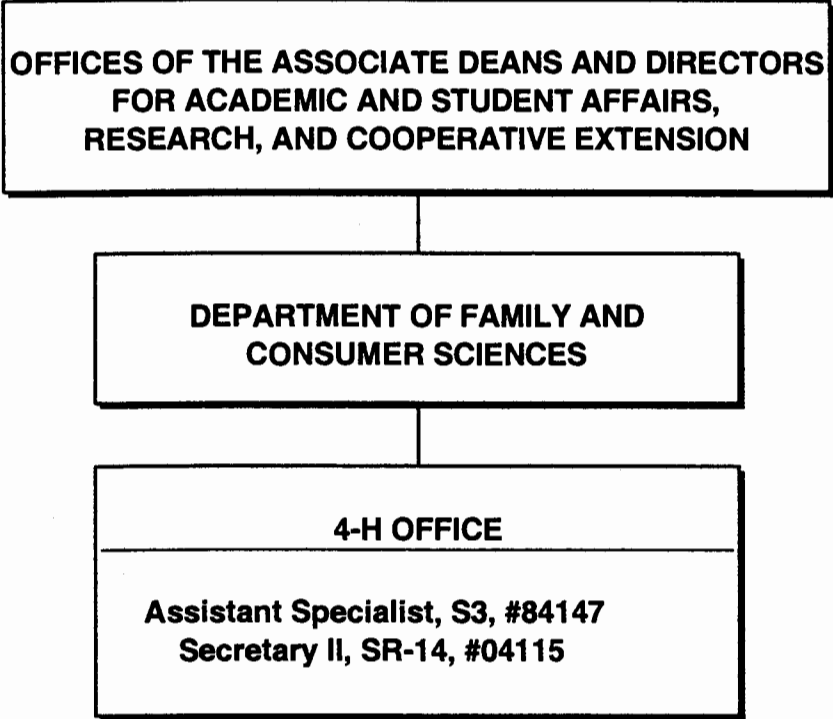


CHART UPDATED
DATE JUL - 1 2000

STATE OF HAWAII
UNIVERSITY OF HAWAII
UNIVERSITY OF HAWAII AT MANOA
COLLEGE OF TROPICAL AGRICULTURE AND HUMAN RESOURCES

COUNTY ADMINISTRATION
POSITION ORGANIZATION CHART: XLI-Q

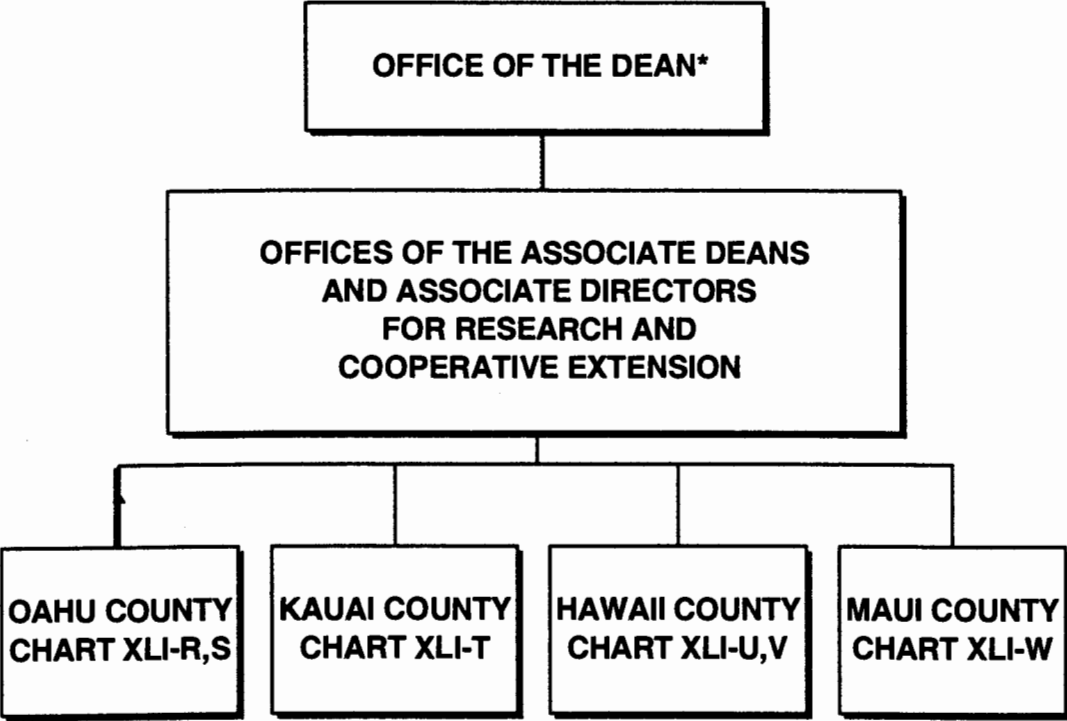


CHART UPDATED
DATE JUL - 1 2000

*& Director of Cooperative Science & Education

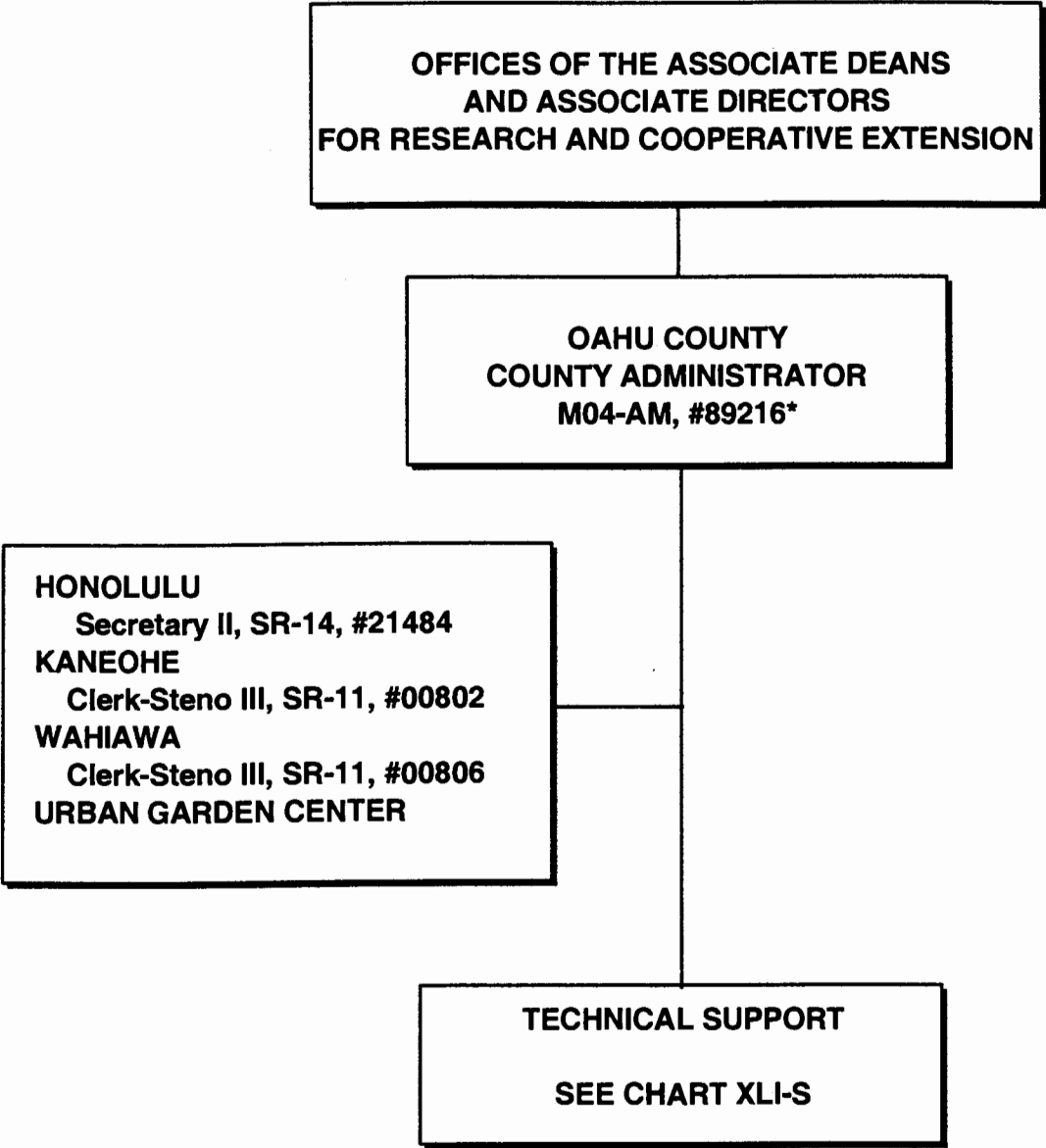


CHART UPDATED

DATE JUL - 1 2000

*County Administrator for Oahu County and Kauai County

STATE OF HAWAII
UNIVERSITY OF HAWAII
UNIVERSITY OF HAWAII AT MANOA
COLLEGE OF TROPICAL AGRICULTURE AND HUMAN RESOURCES

OAHU COUNTY - TECHNICAL SUPPORT
POSITION ORGANIZATION CHART: XLI-S

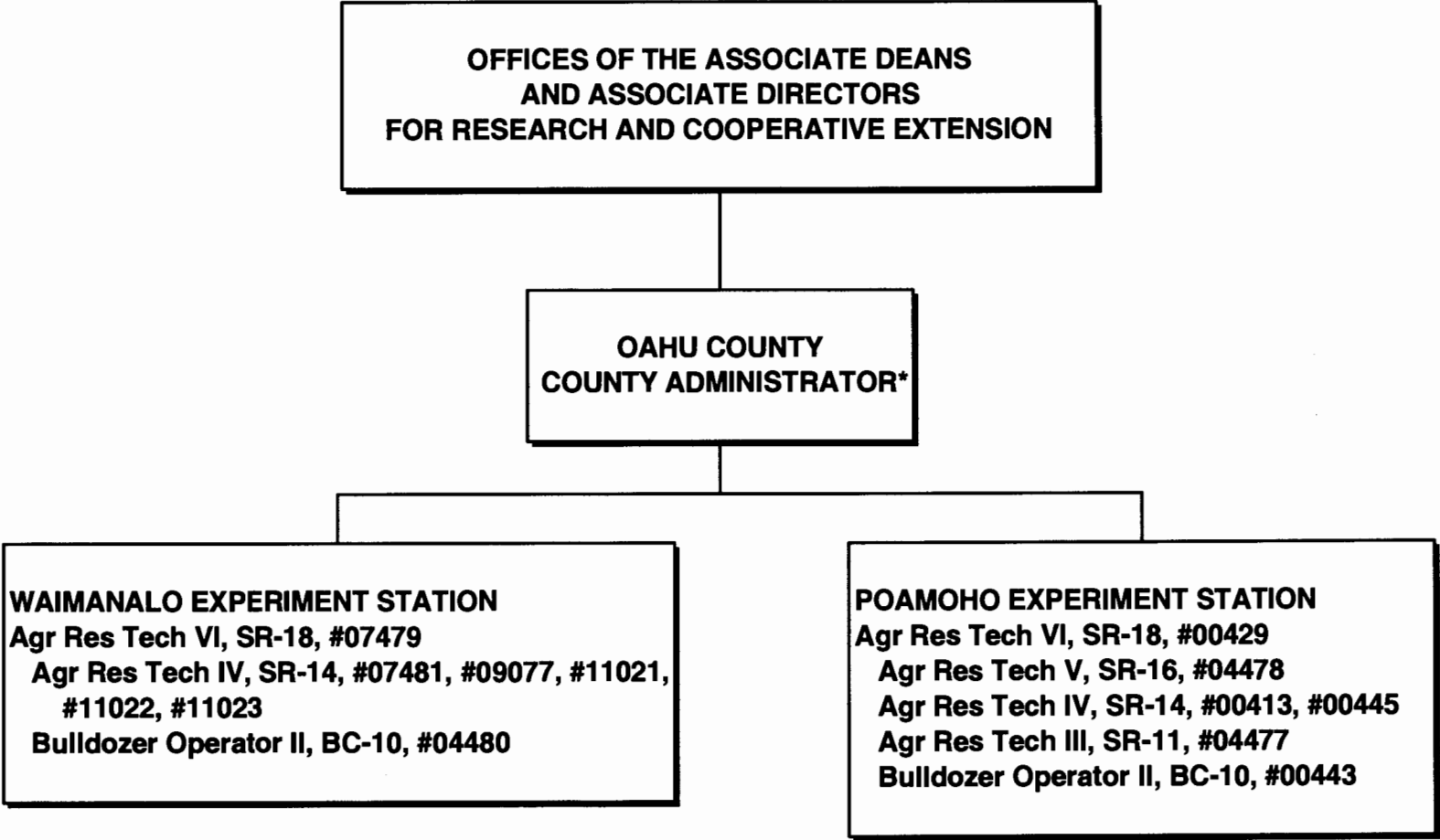


CHART UPDATED
DATE JUL - 1 2000

*County Administrator for Oahu County and Kauai County

STATE OF HAWAII
UNIVERSITY OF HAWAII
UNIVERSITY OF HAWAII AT MANOA
COLLEGE OF TROPICAL AGRICULTURE AND HUMAN RESOURCES

KAUAI COUNTY
POSITION ORGANIZATION CHART: XLI-T

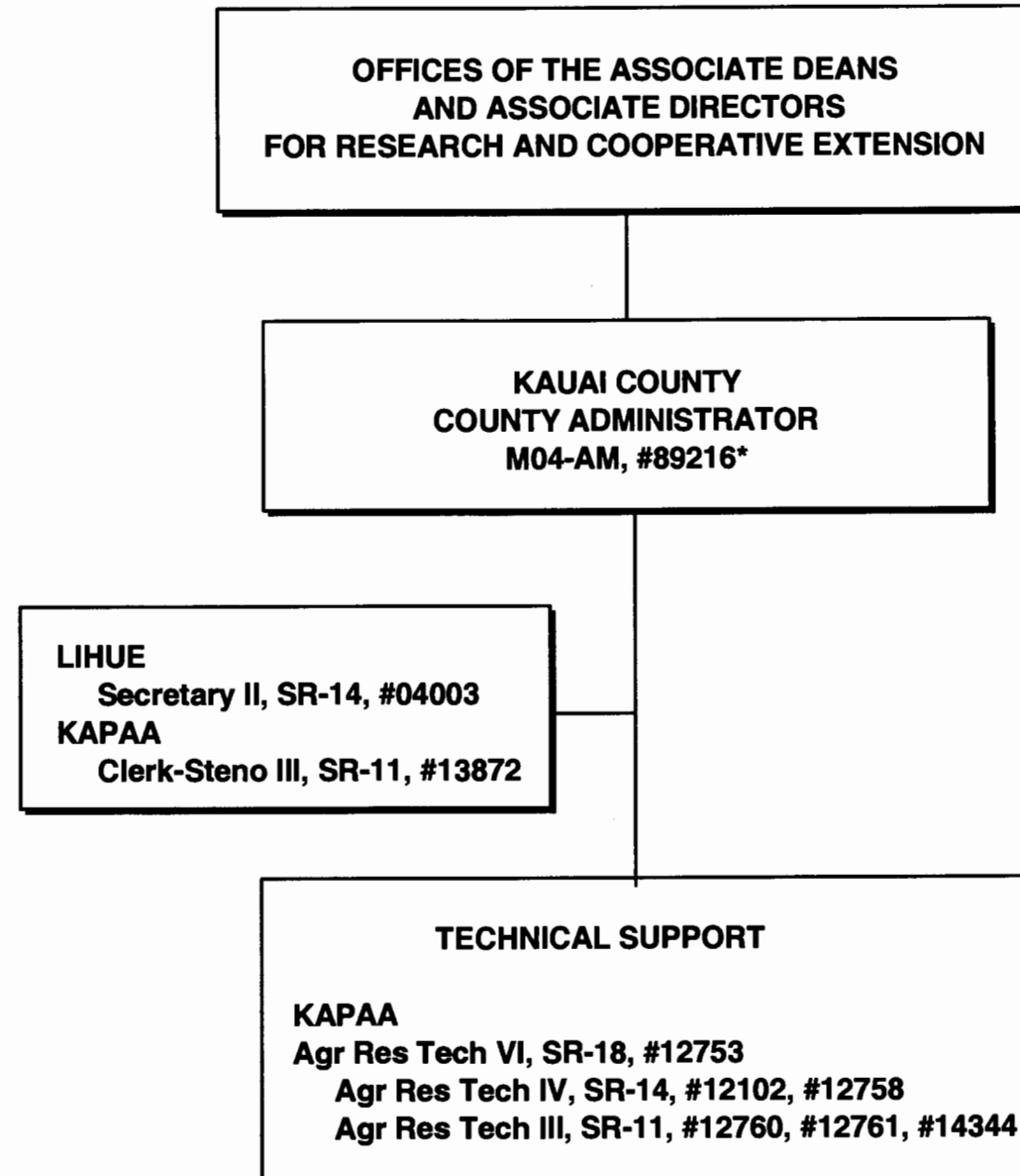


CHART UPDATED
DATE JUL - 1 2000

*County Administrator for Oahu County and Kauai County

STATE OF HAWAII
UNIVERSITY OF HAWAII
UNIVERSITY OF HAWAII AT MANOA
COLLEGE OF TROPICAL AGRICULTURE AND HUMAN RESOURCES

HAWAII COUNTY
POSITION ORGANIZATION CHART: XLI-U

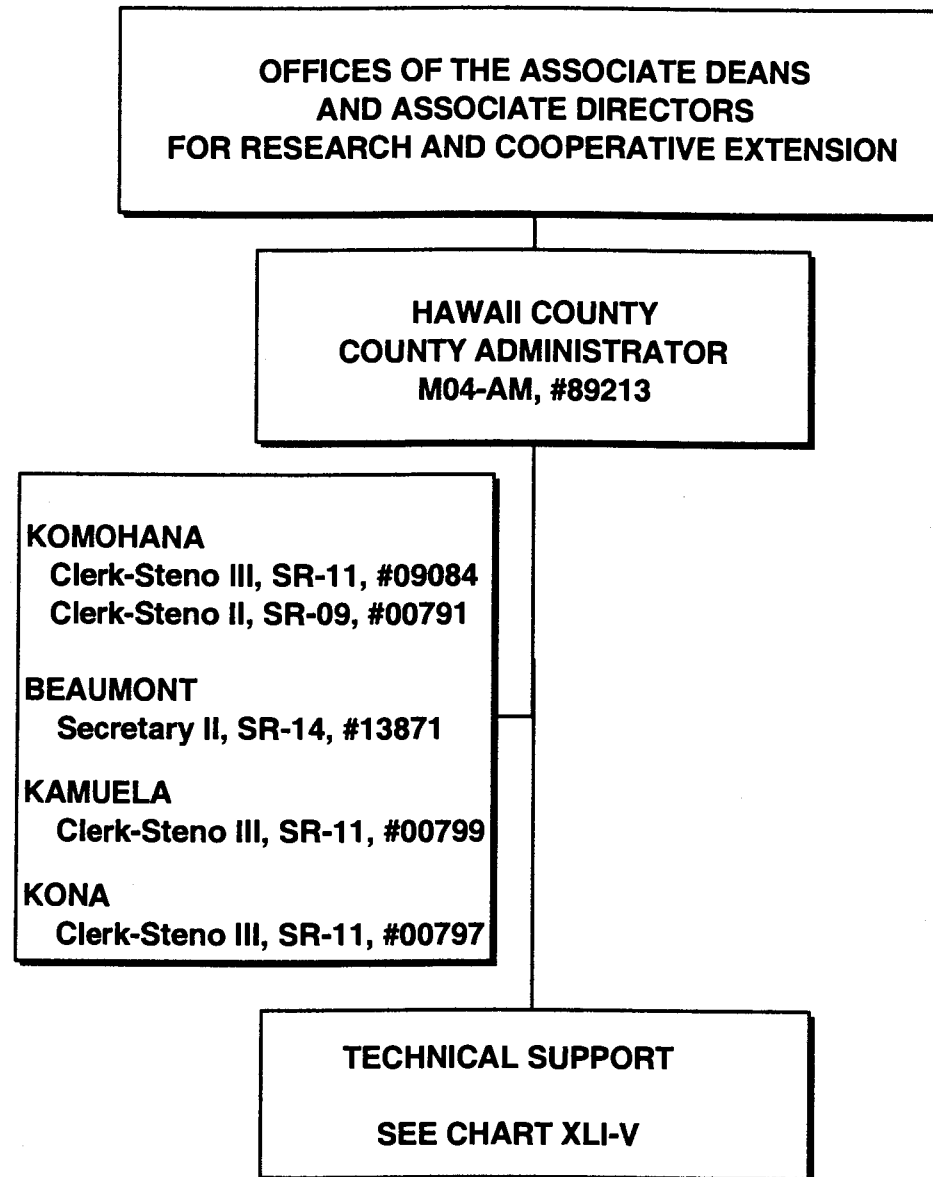


CHART UPDATED
DATE JUL - 1 2000

**OFFICES OF THE ASSOCIATE DEANS
AND ASSOCIATE DIRECTORS
FOR RESEARCH AND COOPERATIVE EXTENSION**

**HAWAII COUNTY
COUNTY ADMINISTRATOR**

STATE OF HAWAII
UNIVERSITY OF HAWAII
UNIVERSITY OF HAWAII AT MANOA
COLLEGE OF TROPICAL AGRICULTURE AND HUMAN
RESOURCES

HAWAII COUNTY - TECHNICAL SUPPORT
POSITION ORGANIZATION CHART: XLI-V

WEST HAWAII

Agr Res Tech VI, SR-18, #13530

MEALANI

Agr Res Tech V, SR-16, #13534

Agr Res Tech IV, SR-14, #14590

**Agr Res Tech III, SR-11, #13709,
#44868, #12100, #44867**

LALAMILO

Agr Res Tech V, SR-16, #13535

HAMAKUA

Agr Res Tech III, SR-11, #13536

KONA

Agr Res Tech V, SR-16, #00409

Agr Res Tech IV, SR-14, #22912

EAST HAWAII

Agr Res Tech VI, SR-18, #12099

WAIAKEA

Agr Res Tech V, SR-16, #12101, #12094, #14166

Agr Res Tech IV SR-14, #12767, #12096, #12766, #14168

Agr Res Tech III, SR-11, #17602, #12098, #15497

Building Maintenance Worker I, BC-09, #12095

VOLCANO

Agr Res Tech V, SR-16, #13206

Agr Res Tech IV, SR-14, #12097

MALAMA-KI

Agr Res Tech V, SR-16, #13205

Agr Res Tech III, SR-11, #12765

CHART UPDATED

DATE JUL - 1 2000

**OFFICES OF THE ASSOCIATE DEANS
AND ASSOCIATE DIRECTORS
FOR RESEARCH AND COOPERATIVE EXTENSION**

**MAUI COUNTY
COUNTY ADMINISTRATOR
M04-AM, #89215**

KAHULUI
Secretary II, SR-14, #00792
Clerk-Typist II, SR-08, #42422
KULA
Clerk-Steno III, SR-11, #13714
MOLOKAI
Clerk-Steno III, SR-11, #28798

TECHNICAL SUPPORT
KULA
Agr Res Tech VI, SR-18, #00415
Agr Res Tech V, SR-16, #12901
Agr Res Tech IV, SR-14, #00406, #00436, #12897,
#12899, #12902
Agr Res Tech III, SR-11, #00404, #12900
MOLOKAI
Agr Res Tech IV, SR -14, #36749

STATE OF HAWAII
UNIVERSITY OF HAWAII
UNIVERSITY OF HAWAII AT MANOA
COLLEGE OF TROPICAL AGRICULTURE AND HUMAN RESOURCES

MAUI COUNTY
POSITION ORGANIZATION CHART: XLI-W

CHART UPDATED
DATE JUL - 1 2000