

State of Hawai'i
University of Hawai'i
University of Hawai'i - West O'ahu

Position Organization Chart

Chart I

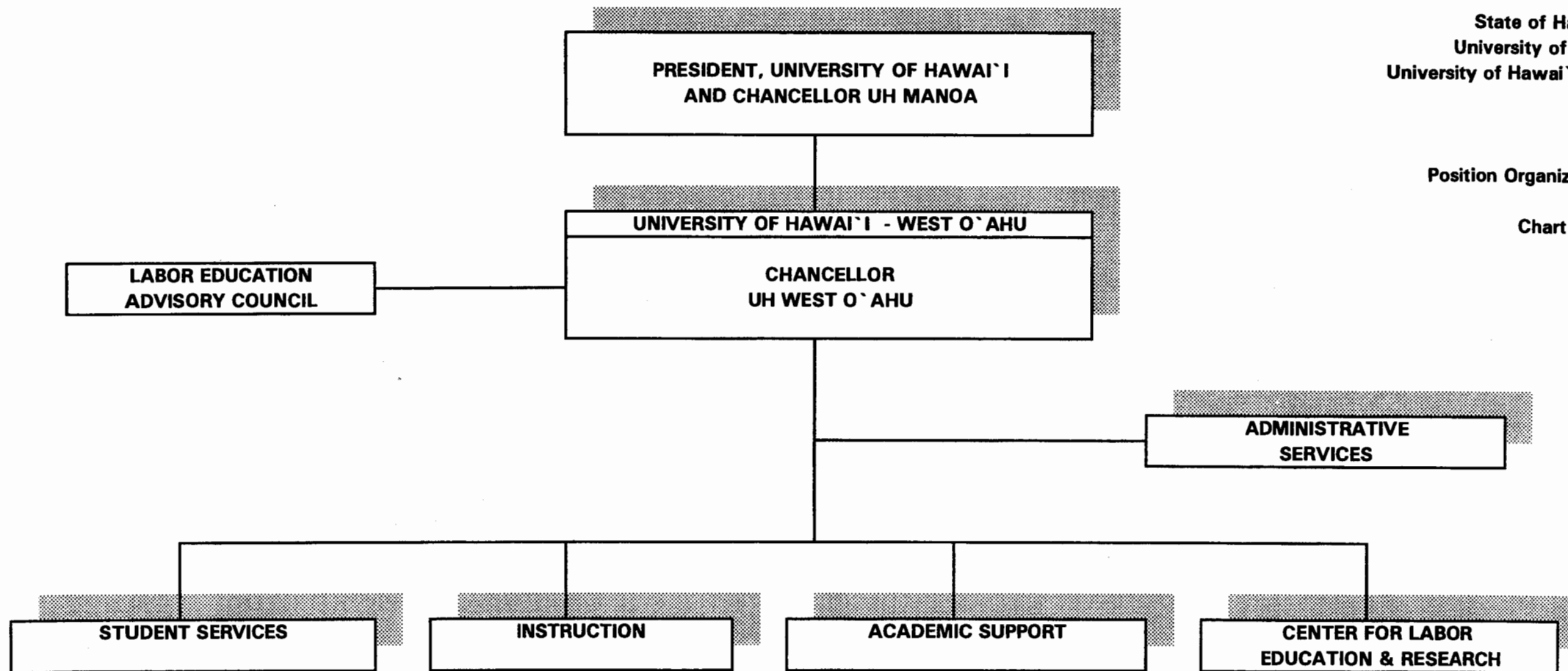


CHART UPDATED
DATE JUL - 1 2000

State of Hawai'i
University of Hawai'i
University of Hawai'i - West O'ahu
Office of the Chancellor

Position Organization Chart

Chart II

General Funds 2.00

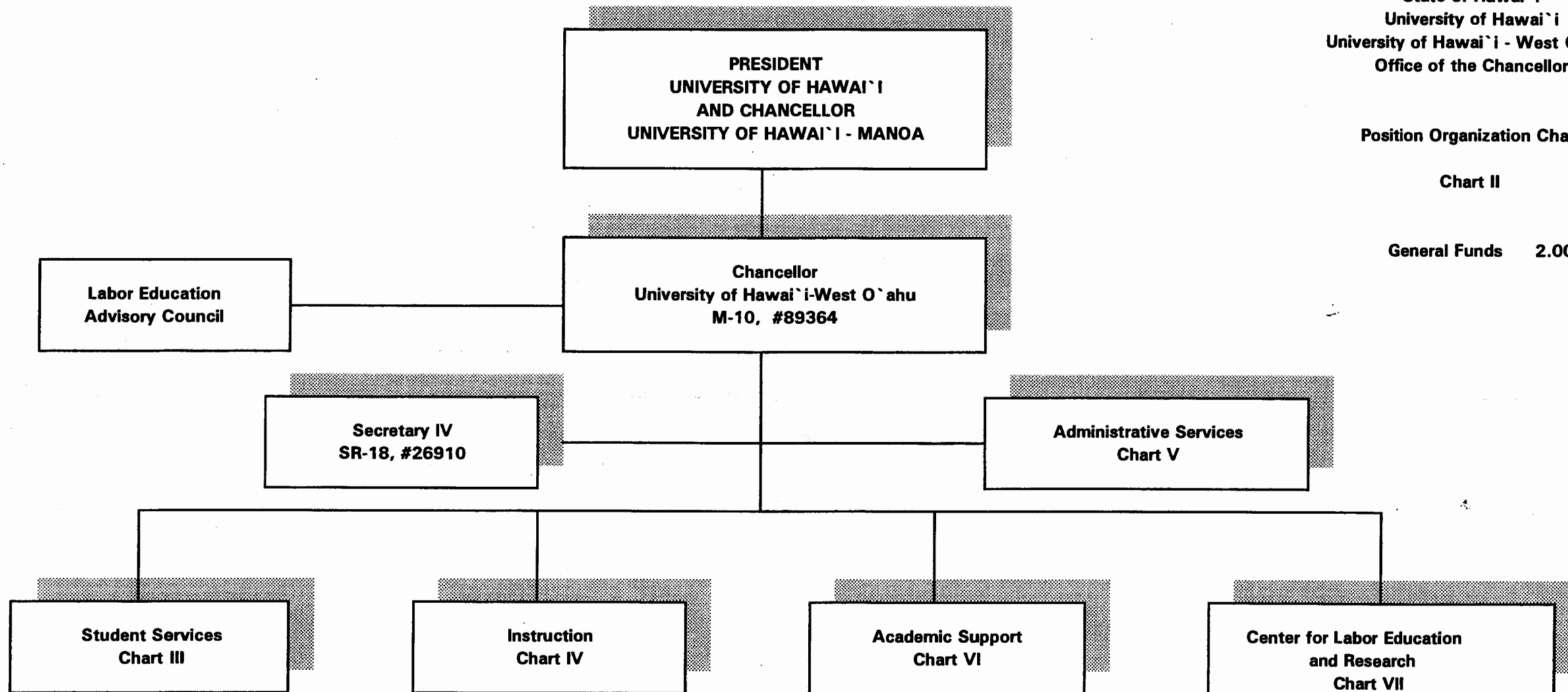


CHART UPDATED
DATE JUL - 1 2000

State of Hawai'i
University of Hawai'i
University of Hawai'i - West O'ahu
Student Services

Position Organization Chart

Chart III

General Funds 7.00

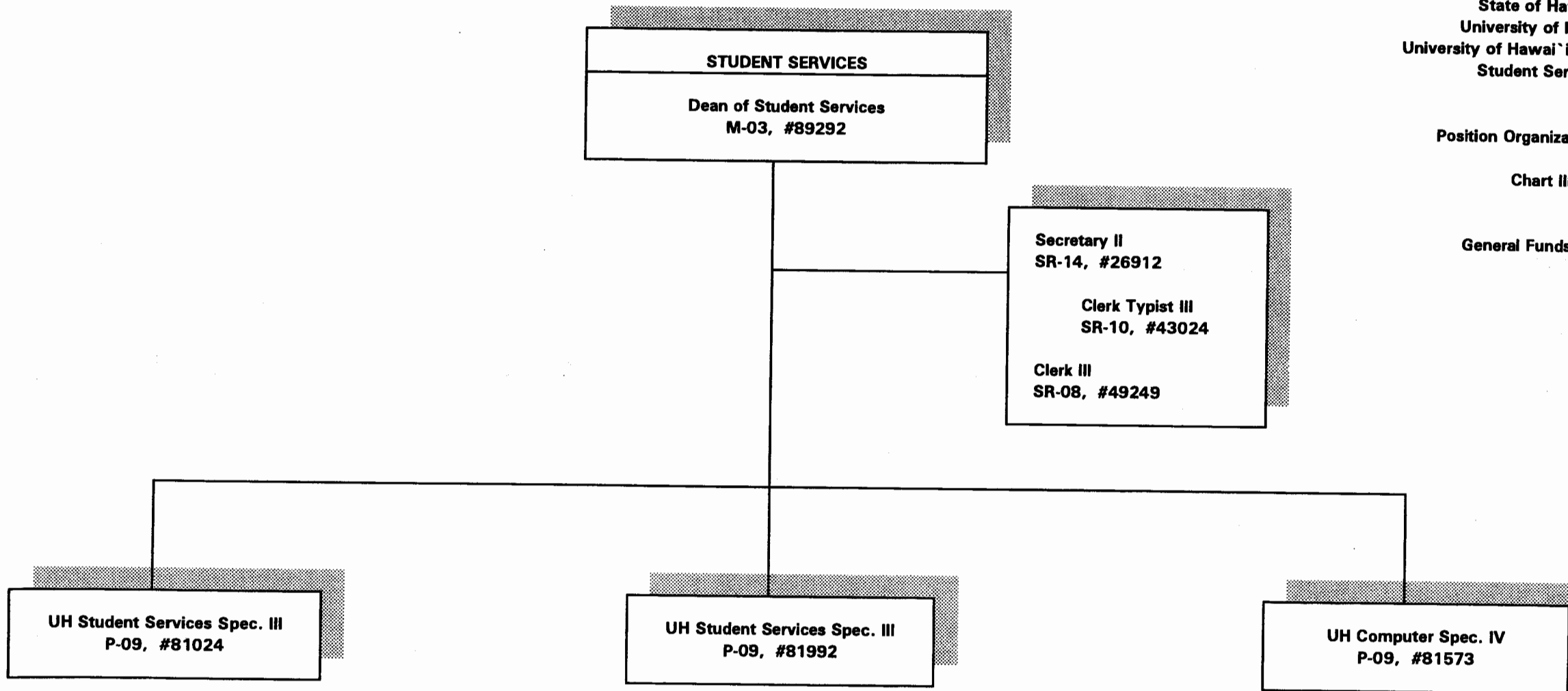


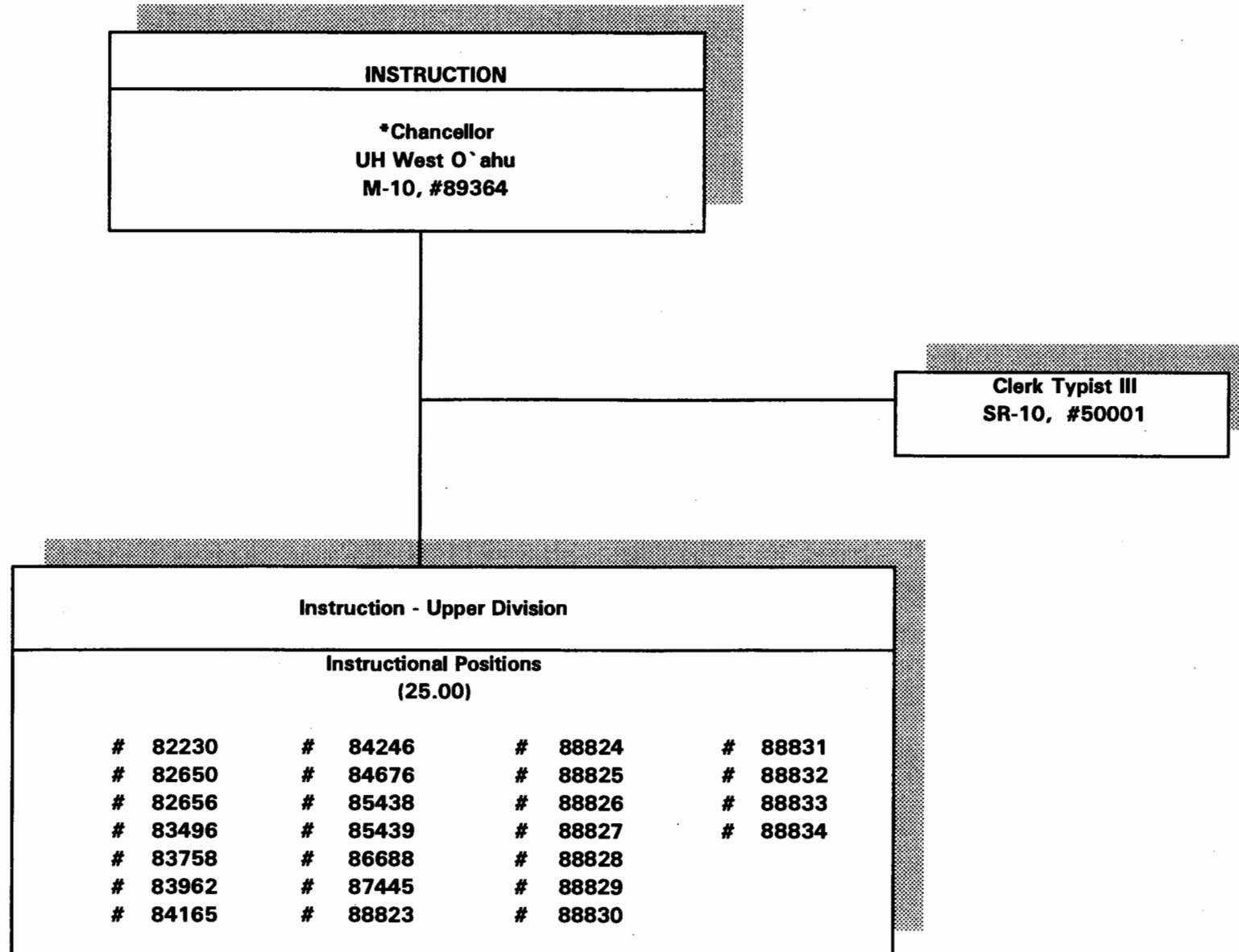
CHART UPDATED
DATE JUL - 1 2000

State of Hawai'i
University of Hawai'i
University of Hawai'i - West O'ahu
Instruction

Position Organization Chart

Chart IV

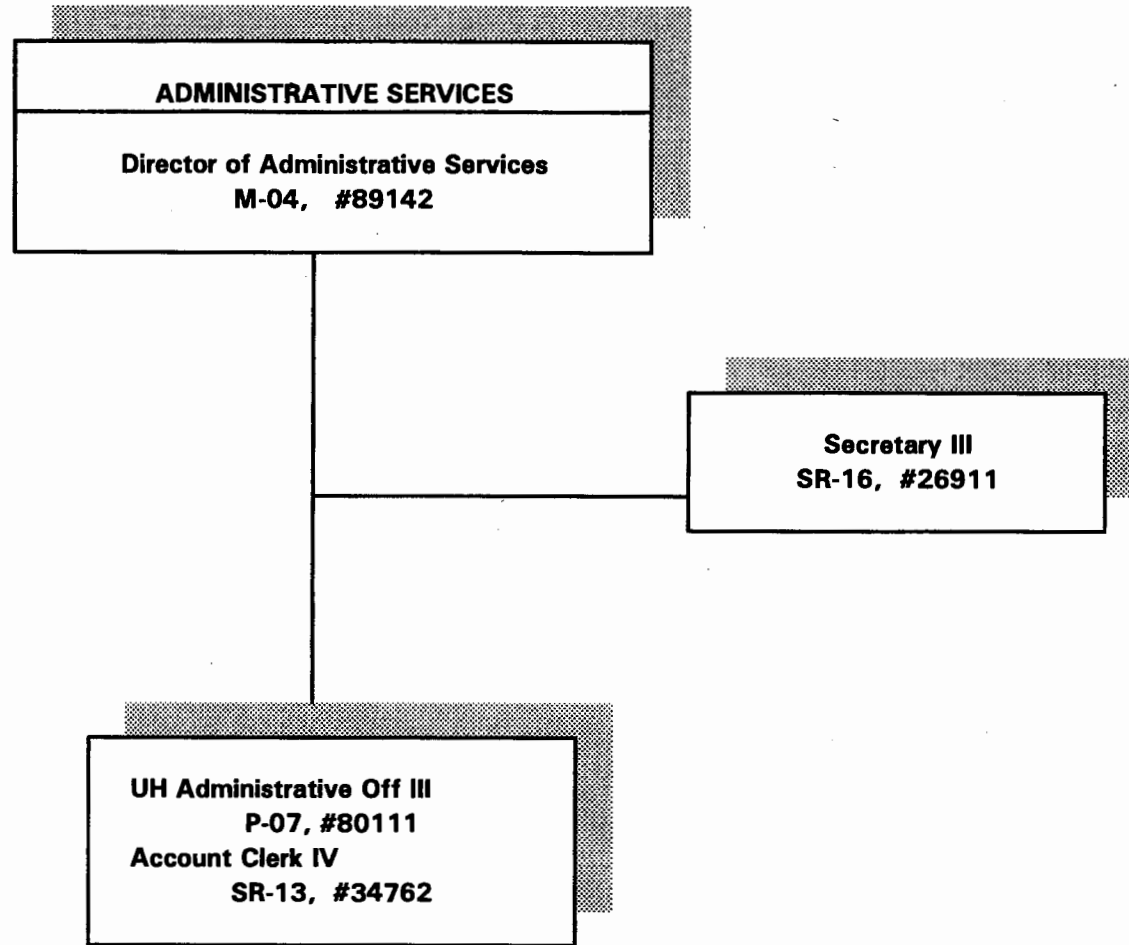
General Funds 26.00



*Position count not included on this page

**Temporary Clerk Typist II, SR-08 special funded position, not included in position count.

CHART UPDATED
DATE JUL - 1 2000



Doesn't include two temporary Janitor II special funded positions.

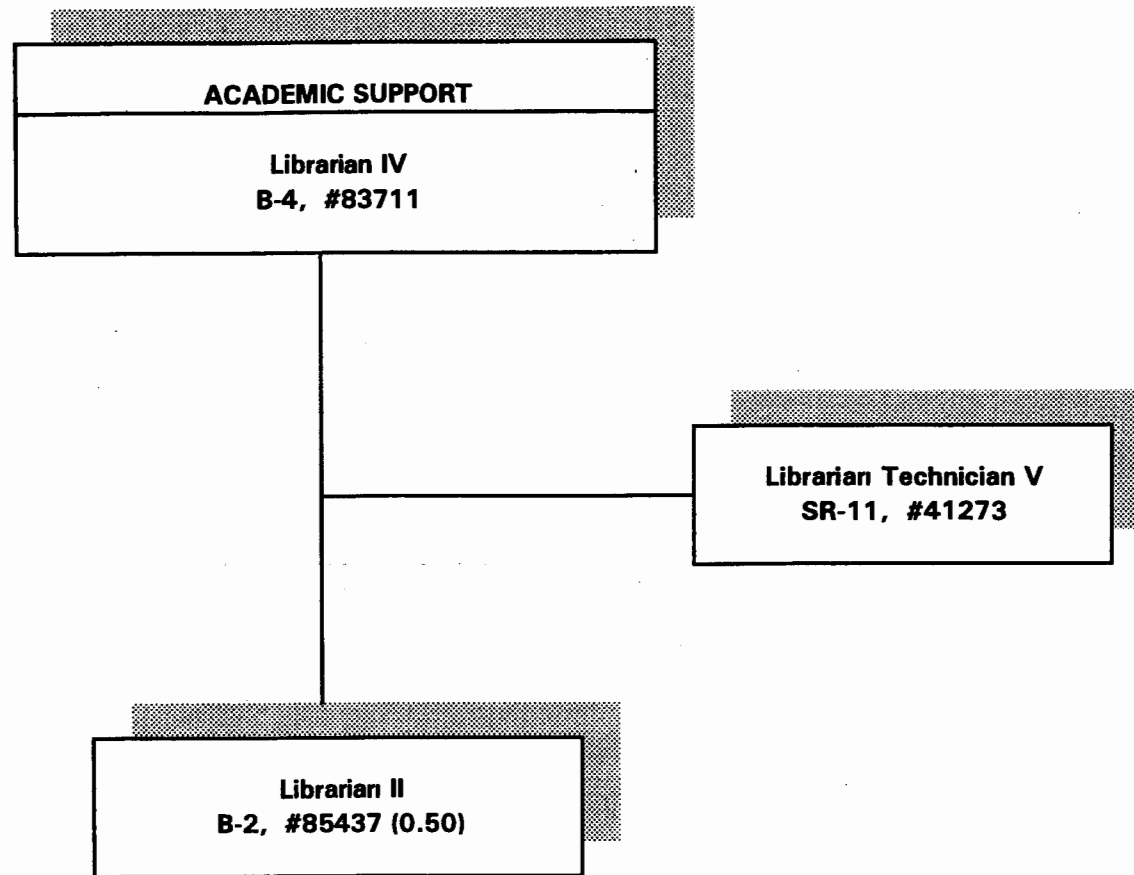
State of Hawai'i
University of Hawai'i
University of Hawai'i - West O'ahu
Administrative Services

Position Organization Chart

Chart V

General Funds 4.00

CHART UPDATED
DATE JUL - 1 2000



State of Hawai'i
University of Hawai'i
University of Hawai'i - West O'ahu
Academic Support

Position Organization Chart

Chart VI

General Funds 2.50

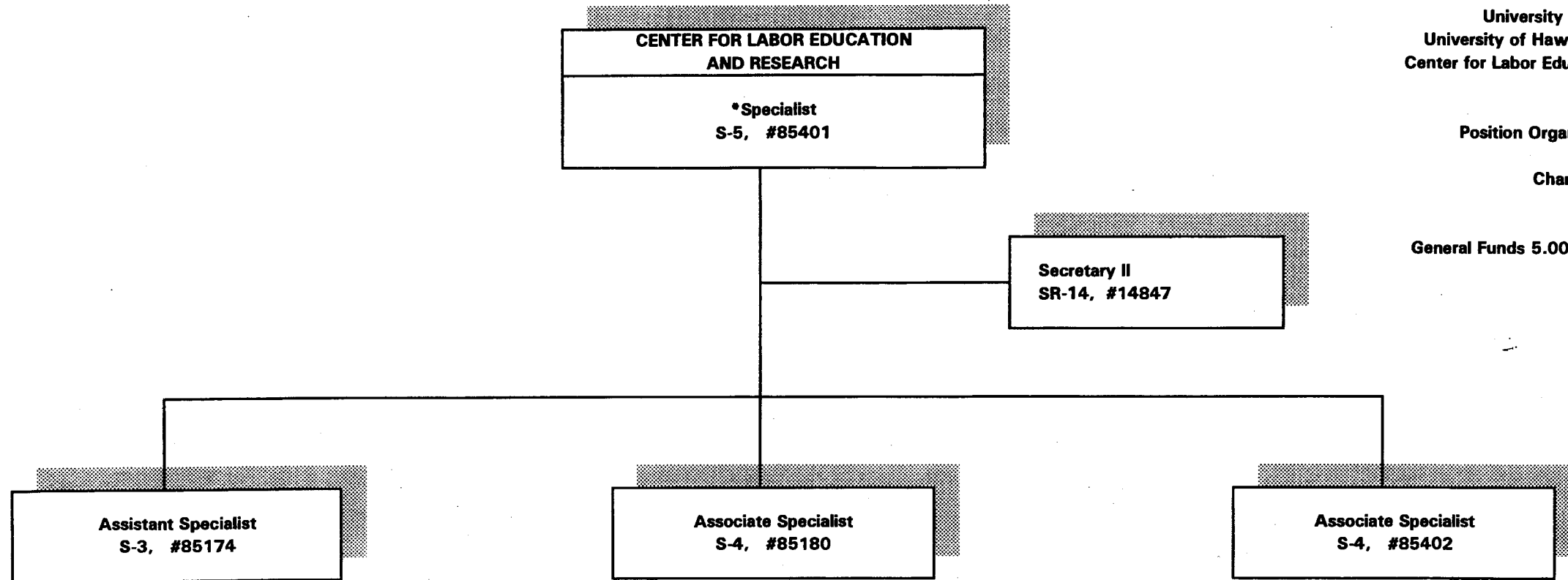
CHART UPDATED
DATE JUL - 1 2000

State of Hawai'i
University of Hawai'i
University of Hawai'i - West O'ahu
Center for Labor Education and Research

Position Organization Chart

Chart VII

General Funds 5.00



*Director

CHART UPDATED
DATE JUL - 1 2000