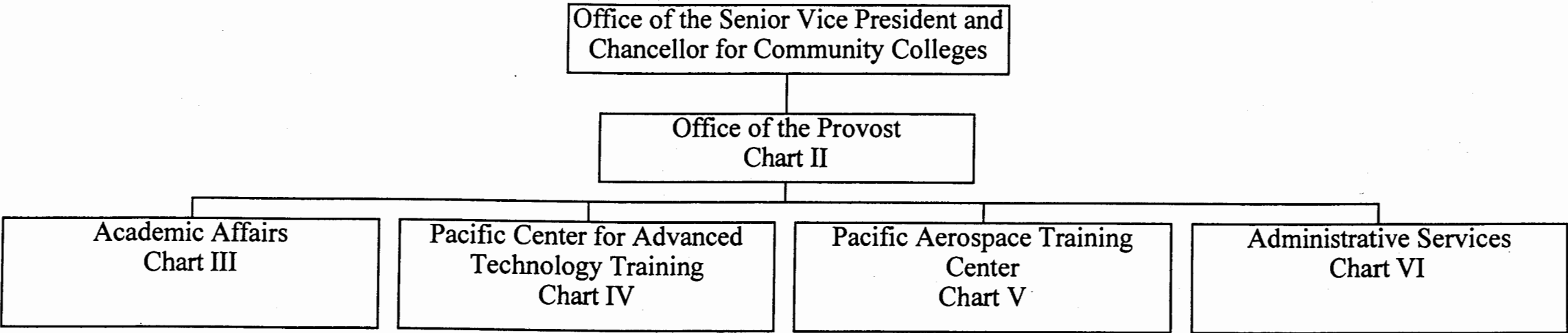


STATE OF HAWAII
UNIVERSITY OF HAWAII
COMMUNITY COLLEGES
HONOLULU COMMUNITY COLLEGE

Organization Chart

Chart I



APPROVED BY THE UNIVERSITY
BOARD OF REGENTS

OCT 19 2001

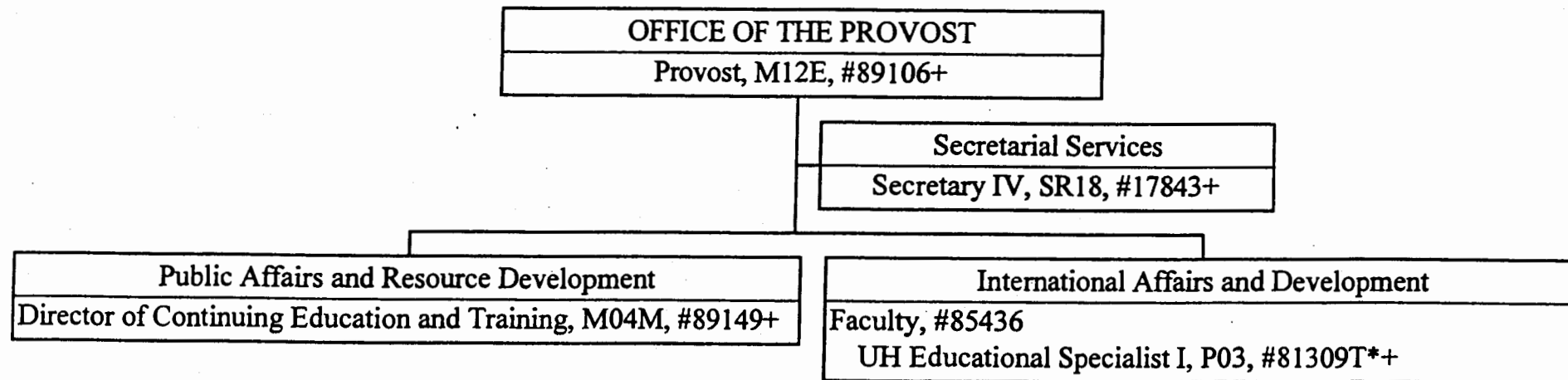
Date

	<u>Perm</u>	<u>Temp</u>
General Fund	275.00	7.00
(B) Special Funds	19.00	

STATE OF HAWAII
UNIVERSITY OF HAWAII
COMMUNITY COLLEGES
HONOLULU COMMUNITY COLLEGE
OFFICE OF THE PROVOST

Organization Chart

Chart II



APPROVED BY THE UNIVERSITY
BOARD OF REGENTS

OCT 19 2001

Date

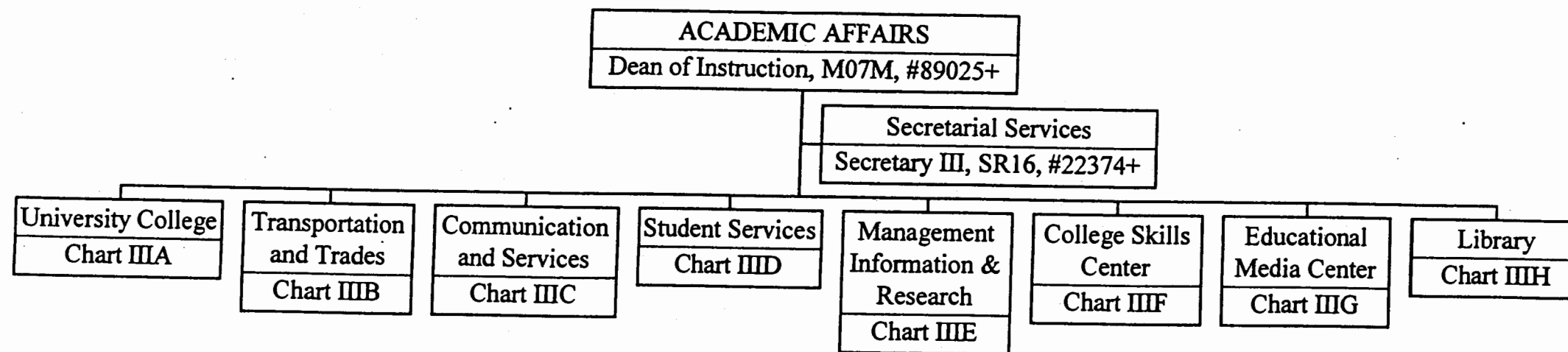
- * Temporary Position
- + Position to be redescribed

	<u>Perm</u>	<u>Temp</u>
General Fund	4.00	1.00

STATE OF HAWAII
UNIVERSITY OF HAWAII
COMMUNITY COLLEGES
HONOLULU COMMUNITY COLLEGE
ACADEMIC AFFAIRS

Organization Chart

Chart III



APPROVED BY THE UNIVERSITY
BOARD OF REGENTS

OCT 19 2001

Date

+ Position to be redescribed

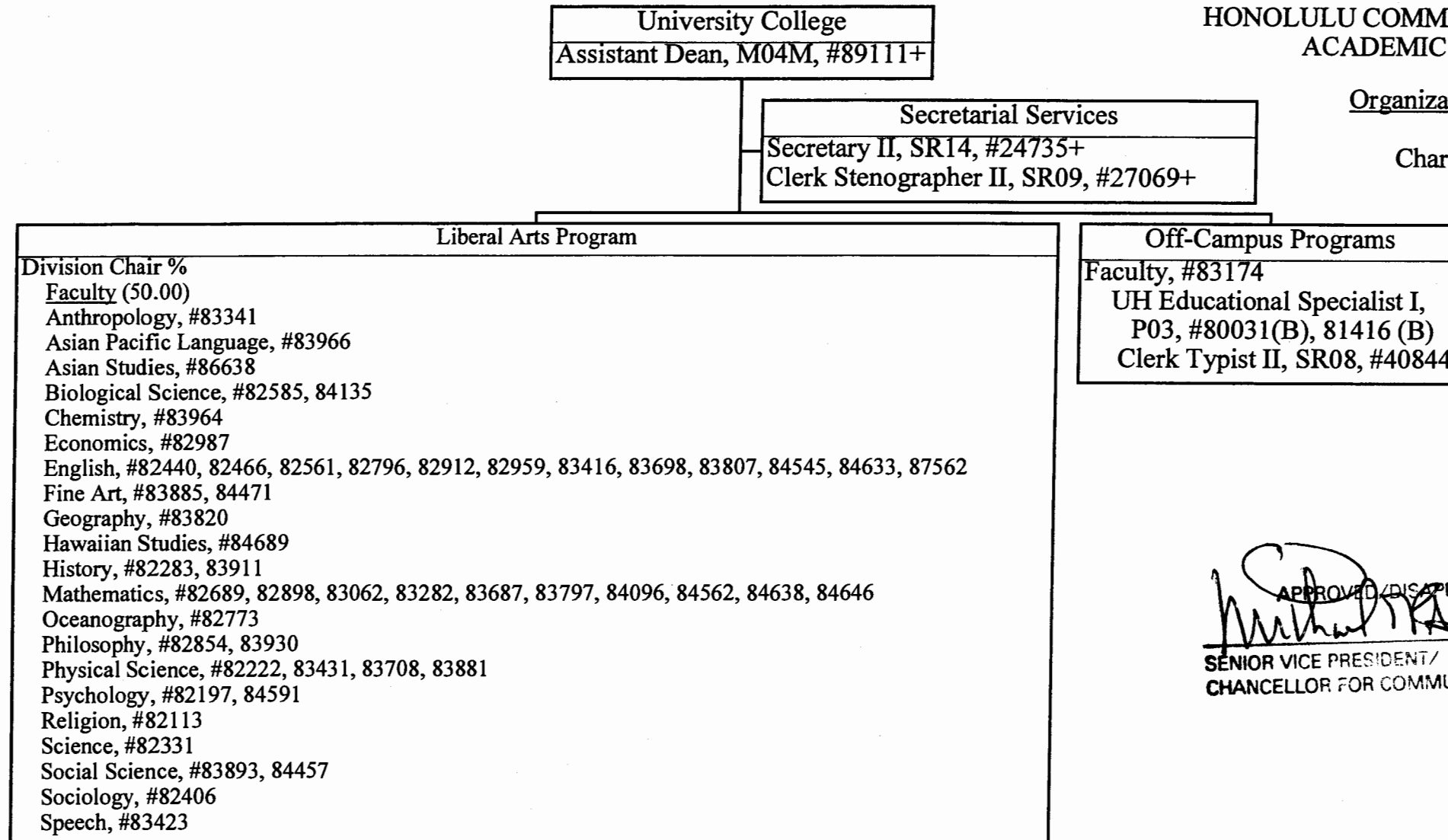
General Fund

Perm
2.00

STATE OF HAWAII
UNIVERSITY OF HAWAII
COMMUNITY COLLEGES
HONOLULU COMMUNITY COLLEGE
ACADEMIC AFFAIRS

Organization Chart

Chart IIIA



APPROVED/DISAPPROVED: _____
SENIOR VICE PRESIDENT/ _____
CHANCELLOR FOR COMMUNITY COLLEGES
DATE 6/5/12

- + To be redescribed
- % Division Chair is appointed from any faculty position in the College.
Multiple Division Chairs may be appointed but each position in the Division has only one immediate supervisor.

	<u>Perm</u>
General Fund	55.00
(B) Special Funds	2.00

STATE OF HAWAII
UNIVERSITY OF HAWAII
COMMUNITY COLLEGES
HONOLULU COMMUNITY COLLEGE
ACADEMIC AFFAIRS

Organization Chart

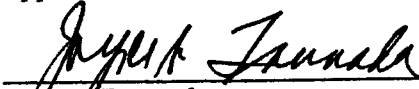
Chart IIIB

Transportation and Trades
Assistant Dean, M04M, #89209+

Secretarial Services
Secretary II, SR14, #45367+
Clerk Stenographer II, SR09, #27070+

Transportation and Trades Programs
Division Chair(s) % <u>Faculty (29.00)</u> Apprenticeship and Applied Trades, #83298 Clerk Typist II, SR08, #14215+ Auto Body Repair and Painting, #84405, 86667 Automotive Mechanics Technology, #83725, 83801, 84064, 84410, 84586, 84884 Carpentry, #82384, 83174 Cooperative Education, #82444, 83604 Diesel Mechanics Technology, #82964, 84480 Drafting Technology, #82092, 82956, 83167 Electrical Installation and Maintenance Technology, #82757, 83368 Fire and Environmental Emergency Response, #83639 Boat Maintenance and Repair, #84688, 86927 UH Educational Specialist II, P06, #80652+@, 81182+@ Occupational and Environmental Safety Management, #83673 Refrigeration and Air Conditioning, #82422, 82518 Sheet Metal and Plastics, #84368 Welding, #83212, 84660 UH Educational Specialist II, P06, #81562, 81991(B)+ UH Educational Specialist I, P03, #81561


Approved Pursuant to BOR Action: ()


 Joyce Tsunoda
 Senior Vice President and Chancellor
 For Community Colleges

Date: OCT 19 2001

- + To be redescribed
- % Division Chair is appointed from any faculty position in the College.
 Multiple Division Chairs may be appointed but each position in the
 Division has only one immediate supervisor.
- @ Supervised by one of the faculty positions

	Perm
General Fund	37.00
(B) Special Funds	1.00


 APPROVED/DISAPPROVED:
 SENIOR VICE PRESIDENT/ CHANCELLOR FOR COMMUNITY COLLEGES
 DATE

Communication and Services
 Assistant Dean, M04M, #89170+

STATE OF HAWAII
 UNIVERSITY OF HAWAII
 COMMUNITY COLLEGES
 HONOLULU COMMUNITY COLLEGE

Organization Chart

Chart IIIC

Secretarial Services
 Secretary II, SR14, #01825
 Clerk Stenographer II, SR09, #27068+, 44568+

Communication and Services Programs
 Division Chair %
Faculty (29.00)
 Administration of Justice, #83339
 Communication Arts, #82969, 83894
 Computing, Electronics, and Networking Technology, #83116, 83699, 86615, 86620, 86677
 Cosmetology, #82990, 83649, 83825, 84099
 UH Educational and Academic Support Specialist, P01E, #80879(B)+@
 Fashion Technology, #84681
 Food Science and Human Nutrition, #82883
 Human Services, #82843, 83529, 83838, 84122, 86639, 86907, 86909, 86980, 87028, 87029, 87031, 87032
 UH Early Childhood Specialist, #94626F(B)\$
 UH Early Childhood Specialist III, P07, #80699, 81576, 81679, 81786, 81822,
 80809(W), 80817(W), 80831(W)
 UH Early Childhood Specialist I, P01, 80832(B)^, 80834(B)^, 80835(B)^,
 80839(B)^, 80844(B)^, 80845(B)^, 80846(B)^, 80862(B)^
 Information and Computer Science, #82233, 84669, 83138
 UH Educational Specialist II, P06, #81165+
 UH Educational and Academic Support Specialist, P01E, #80877(B)

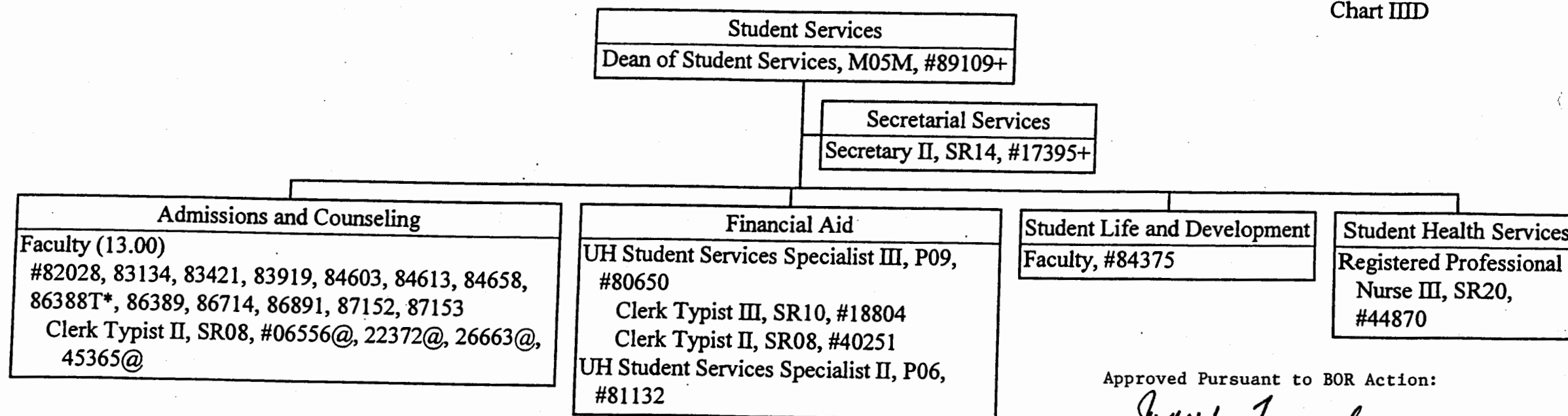
- + To be redescribed
- % Division Chair is appointed from any faculty position in the College.
Multiple Division Chairs may be appointed but each position in the
Division has only one supervisor.
- @ Supervised by one of the faculty positions
- ^ Supervised by one of the senior APT positions
- \$ To be established

	<u>Perm</u>
General Fund	39.00
(B) Special Funds	14.00

STATE OF HAWAII
UNIVERSITY OF HAWAII
COMMUNITY COLLEGES
HONOLULU COMMUNITY COLLEGE
ACADEMIC AFFAIRS

Organization Chart

Chart III D



Approved Pursuant to BOR Action:

Joyce Tsunoda
Joyce Tsunoda
Senior Vice President and Chancellor For
Community Colleges

Date: OCT 19 2001

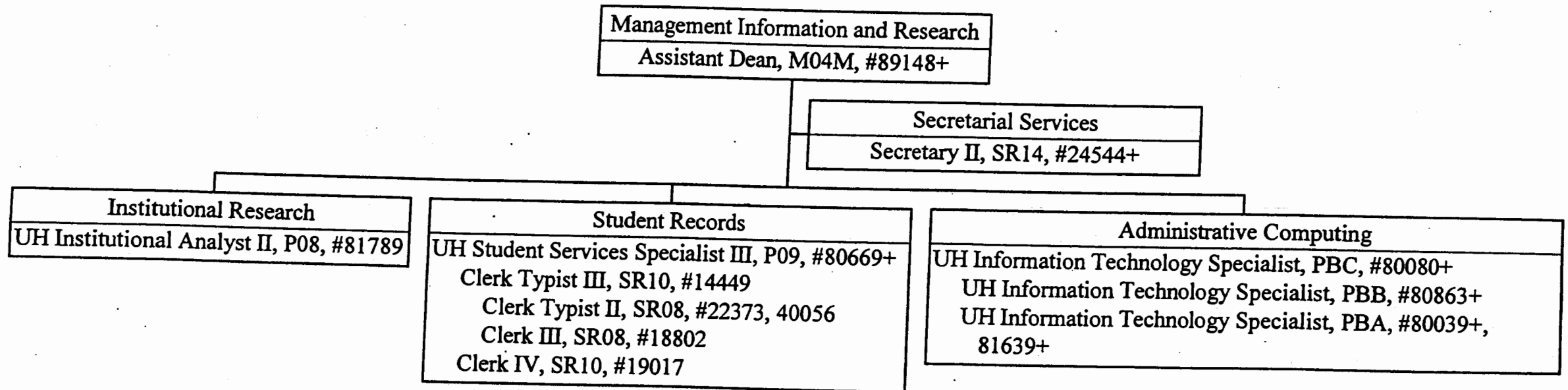
- * Temporary Position
- + To be redescribed
- @ Supervised by one of the faculty positions

	<u>Perm</u>	<u>Temp</u>
General Fund	24.00	1.00

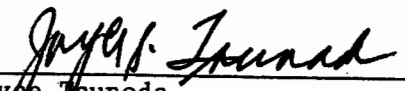
STATE OF HAWAII
UNIVERSITY OF HAWAII
COMMUNITY COLLEGES
HONOLULU COMMUNITY COLLEGE
ACADEMIC AFFAIRS

Organization Chart

Chart III E



Approved Pursuant to BOR Action:


Joyce Tsunoda
Senior Vice President and Chancellor For
Community Colleges

Date: OCT 19 2001

+ To be redescribed

General Fund Perm
13.00

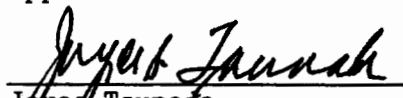
STATE OF HAWAII
UNIVERSITY OF HAWAII
COMMUNITY COLLEGES
HONOLULU COMMUNITY COLLEGE
ACADEMIC AFFAIRS

Organization Chart

Chart III F

College Skills Center
Faculty (4.00) #83695, 86804, 86849, 86854 UH Educational Specialist II, P06, #81975@ UH Educational Specialist I, P03, #81973@, 81974@ 81788@ Clerk Stenographer II, SR09, #26748@

Approved Pursuant to BOR Action:


Joyce Tsunoda
Senior Vice President and Chancellor
For Community Colleges

Date: OCT 19 2001

@ Supervised by one of the faculty positions

Perm
General Fund 9.00

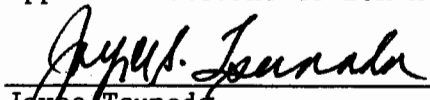
STATE OF HAWAII
UNIVERSITY OF HAWAII
COMMUNITY COLLEGES
HONOLULU COMMUNITY COLLEGE
ACADEMIC AFFAIRS

Organization Chart

Chart III G

Educational Media Center
Faculty, #84542
UH Media Specialist III, P07, #81478
UH Media Specialist II, P05, #80692
UH Media Specialist I, P03, #80614
UH Electronics Technician II, P09, #80260, 81203T*
Offset Press Operator III, BC09, #27186+
Offset Press Operator II, BC08, #45710+
Duplicating Machine Operator III, SR09, #18803+
Clerk Typist II, SR08, #22371

Approved Pursuant to BOR Action:


Joyce Tsunoda
Senior Vice President and Chancellor For
Community Colleges

Date: OCT 19 2001

* Temporary Position
+ To be redescribed

	<u>Perm</u>	<u>Temp</u>
General Fund	9.00	1.00

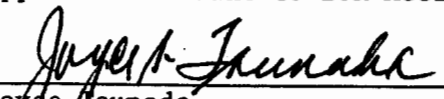
STATE OF HAWAII
UNIVERSITY OF HAWAII
COMMUNITY COLLEGES
HONOLULU COMMUNITY COLLEGE
ACADEMIC AFFAIRS

Organization Chart

Chart IIH

Library
Faculty, #84693
Library Technician V, SR11, #16960
Library Assistant IV, SR09, #22370
Faculty, #83150
Library Technician V, SR11, #18657
Library Assistant IV, SR09, #18801, 26783
Library Assistant III, SR07, #24011
Faculty, #82339, 83418, 83998
Faculty, #86796T*

Approved Pursuant to BOR Action:


Joyce Tsunoda
Senior Vice President and Chancellor For
Community Colleges

Date: OCT 19 2001

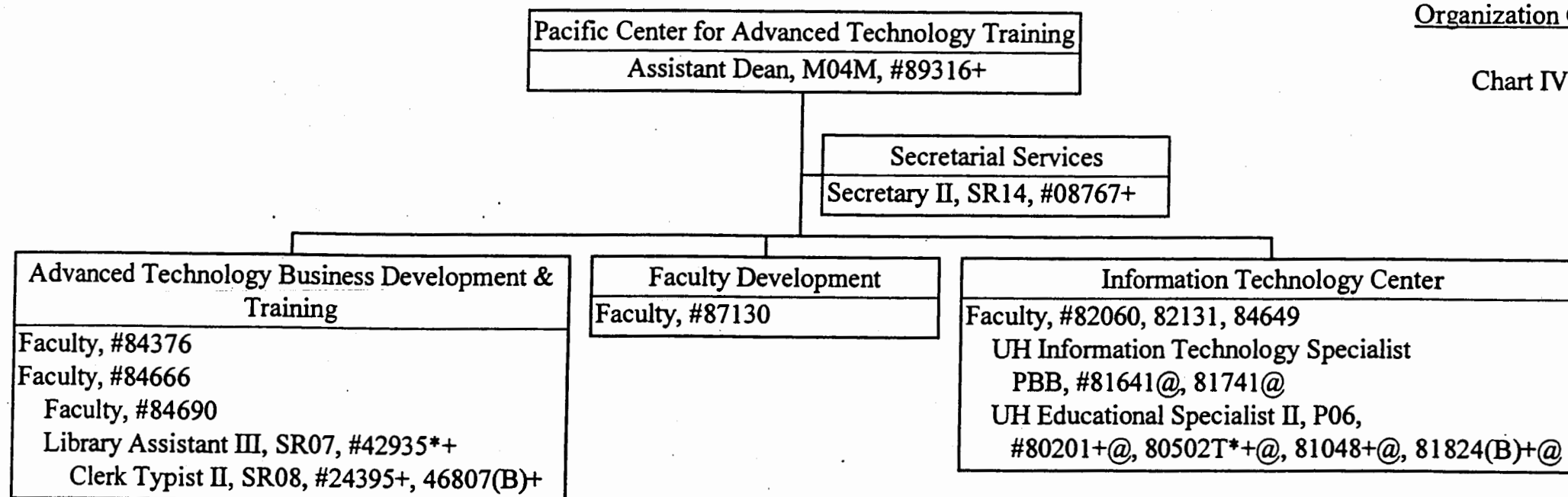
	<u>Perm</u>	<u>Temp</u>
General Fund	11.00	1.00

* Temporary Position

STATE OF HAWAII
UNIVERSITY OF HAWAII
COMMUNITY COLLEGES
HONOLULU COMMUNITY COLLEGE
PACIFIC CENTER FOR ADVANCED
TECHNOLOGY TRAINING

Organization Chart

Chart IV



APPROVED BY THE UNIVERSITY
BOARD OF REGENTS

OCT 19 2001

Date

* Temporary Position

+ To be redescribed

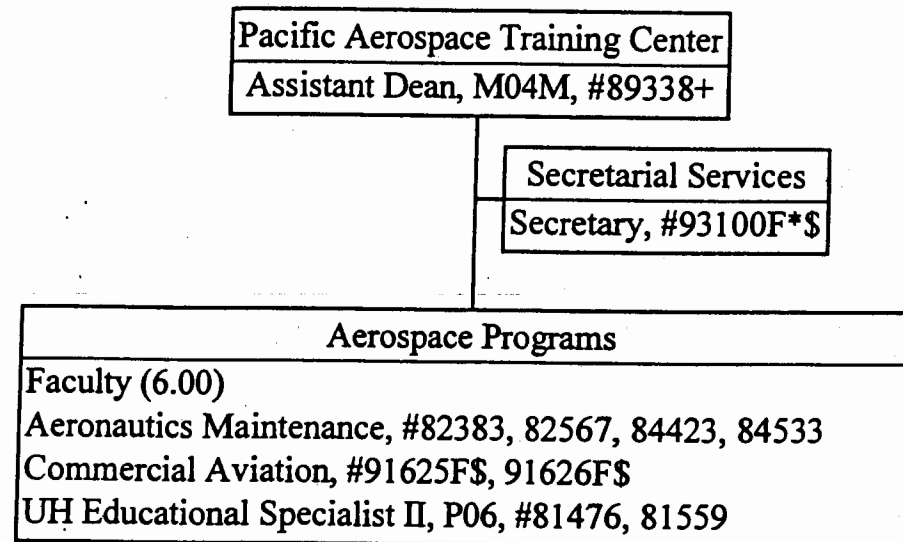
@ Supervised by one of the faculty positions

	<u>Perm</u>	<u>Temp</u>
General Fund	14.00	2.00
(B) Special Funds	2.00	

STATE OF HAWAII
UNIVERSITY OF HAWAII
COMMUNITY COLLEGES
HONOLULU COMMUNITY COLLEGE
ADMINISTRATIVE SERVICES

Organization Chart

Chart V



APPROVED BY THE UNIVERSITY
BOARD OF REGENTS

OCT 19 2001

Date

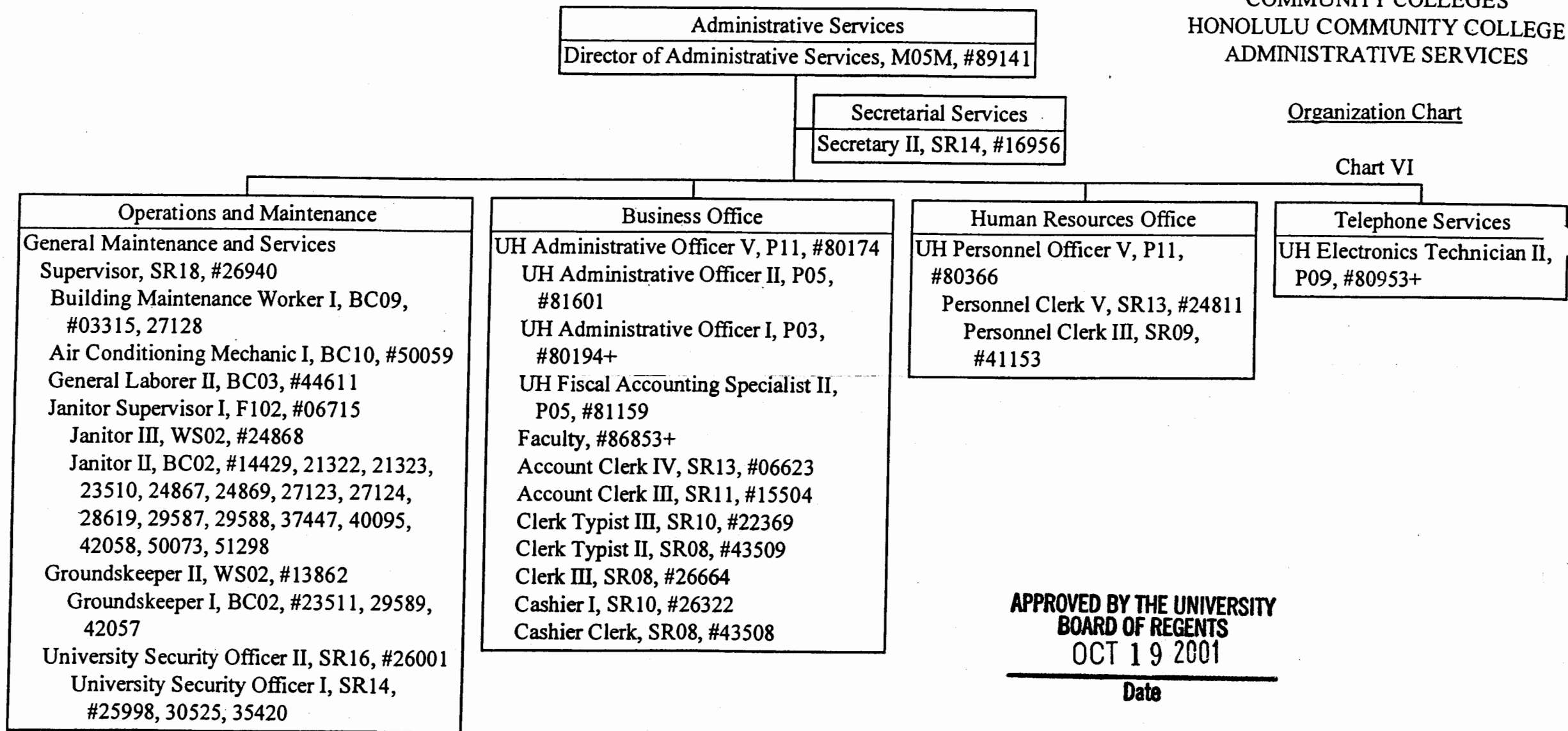
- * Temporary Position
- + To be redescribed
- \$ To be established

	<u>Perm</u>	<u>Temp</u>
General Fund	9.00	1.00

STATE OF HAWAII
UNIVERSITY OF HAWAII
COMMUNITY COLLEGES
HONOLULU COMMUNITY COLLEGE
ADMINISTRATIVE SERVICES

Organization Chart

Chart VI



APPROVED BY THE UNIVERSITY
BOARD OF REGENTS
OCT 19 2001

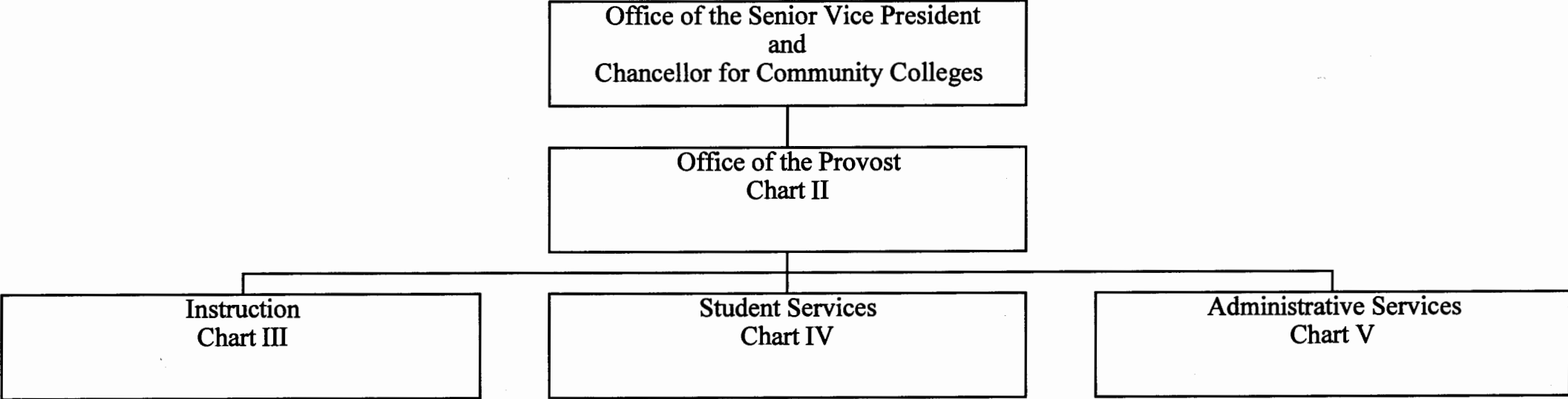
Date

+ To be redescribed

	<u>Perm</u>
General Fund	49.00

STATE OF HAWAII
UNIVERSITY OF HAWAII
COMMUNITY COLLEGES
HONOLULU COMMUNITY COLLEGE

Organization Chart
Chart I



SUPERSEDED
Date OCT 19 2001

CHART UPDATED
DATE JUN 30 2001

	<u>Perm</u>	<u>Temp</u>
General Fund	272.00	7.00
(B) Special Funds	5.00	
(W) Revolving Funds	14.00	

STATE OF HAWAII
UNIVERSITY OF HAWAII
COMMUNITY COLLEGES
HONOLULU COMMUNITY COLLEGE
OFFICE OF THE PROVOST

Position Organization Chart
Chart II

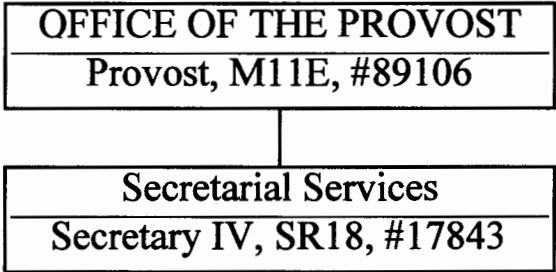


CHART UPDATED

DATE JUN 30 2001

SUPERSEDED
Date OCT 19 2001

General Fund

Perm
2.00

STATE OF HAWAII
UNIVERSITY OF HAWAII
COMMUNITY COLLEGES
HONOLULU COMMUNITY COLLEGE
INSTRUCTION

Position Organization Chart
Chart III

INSTRUCTION
Dean of Instruction, M07M, #89025

Keahole Flight Center
Assistant Dean of Instruction, M04M, #89338
Secretary, #93100F****

Secretarial Services
Secretary III, SR16, #22374

School-to-Work
Faculty (Coordinator), #84376

Division I
Assistant Dean, M04M, #89111**
Secretary II, SR14, #08767**
Faculty (22.00)
Anthropology, #83341
Economics, #82987
Geography, #83820
Information and Computer Science,
#82060, 82131, 82233, 84649, 84669
UH Computer Specialist IV, P09, #81641
UH Computer Specialist III, P07, #81741
UH Educational Specialist II, P06, #81048,
80502T*
Psychology, #82197, 84591
Social Science, #83893, 84457
Sociology, #82406
Carpentry, #82384, 83174
Drafting Technology, #82092, 82956,
83167
Sheet Metal and Plastics, #84368
Welding, #83212, 84660
Apprenticeship, #83298
Clerk Typist II, SR08, #14215

Division II
Assistant Dean, M04M, #89148**
Secretary II, SR14, #01825**
UH Institutional Analyst II, P08, #81789
Faculty (31.00)
Fine Art, #83885
History, #82283, 83911
Humanities++
Philosophy, #82854, 83930
Religion, #82113
Speech, #83423
Administration of Justice, #83339
Communication Arts, #82969, 83894, 84471
Cosmetology, #82990, 83649, 83825, 84099
UH Educational and Academic Support Specialist, P01E,
#80879 (W)
Fashion, #82883, 84681
Fire and Environmental Emergency Response, #83639
Human Services, #82843, 83529, 83838, 84122, 86639,
86907, 86909, 87028, 87029, 87031, 87032
Faculty #86980
Clerk Stenographer II, SR09, #44568
UH Early Childhood Specialist, #94626F (W)***
UH Early Childhood Specialist III, P07, **, #80699, 81576,
81679, 81786, 81822, 80809 (W), 80817 (W), 80831 (W)
UH Early Childhood Specialist I, P01, **,
#80832 (W), 80834 (W), 80835 (W), 80839 (W),
80844 (W), 80845 (W), 80846 (W), 80862 (W)
Occupational and Environmental Safety Management, #83673

Division III
Assistant Dean, M04M, #89170**
Secretary II, SR14, #24735**
Faculty (31.00)
Biological Science, #82585, 84135
Chemistry, #83964
Electrical Engineering, #86615
Engineering Science, #83138
Mathematics, #82689, 82898, 83062,
83282, 83687, 83797, 84096,
84562, 84638, 84646
Oceanography, #82773
Physical Science, #82222, 83431,
83708, 83881
Science, #82331
Computing, Electronics, and Networking,
#83116, 83699, 86620, 86677
Electrical Installation and Maintenance,
#82757, 83368
Refrigeration and Air Conditioning,
#82422, 82518
Cooperative Education, #82444, 83604

Division IV
Assistant Dean, M04M, #89209**
Secretary II, SR14, #24544**
Faculty (32.00)
Asian Pacific Language, #83966
Asian Studies, #86638
Business++
English, #82440, 82466, 82561, 82796, 82912, 82959,
83416, 83698, 83807, 84545, 84633
Hawaiian Studies, #84689
Journalism++
Aeronautics Maintenance, #82383, 82567, 84423, 84533
UH Educational Specialist II, P06, #81476, 81559
Auto Body Repair and Painting, #84405, 86667, 87562
Automotive Mechanics, #83725, 83801, 84064, 84410, 84586,
84690, 84884
UH Educational Specialist II, P06, #81562
UH Educational Specialist I, P03, #81561
Diesel Mechanics, #82964, 84480
Marine Maintenance and Repair, #84688, 86927
UH Educational Specialist II, P06, #80652, 81182

Commercial Baking program discontinued:
(BOR approved 5-24-96)
UH Educational and Academic Support
Specialist, P01, #80877 (W)

SUPERSEDED
Date OCT 19 2001

CHART UPDATED
DATE JUN 30 2001

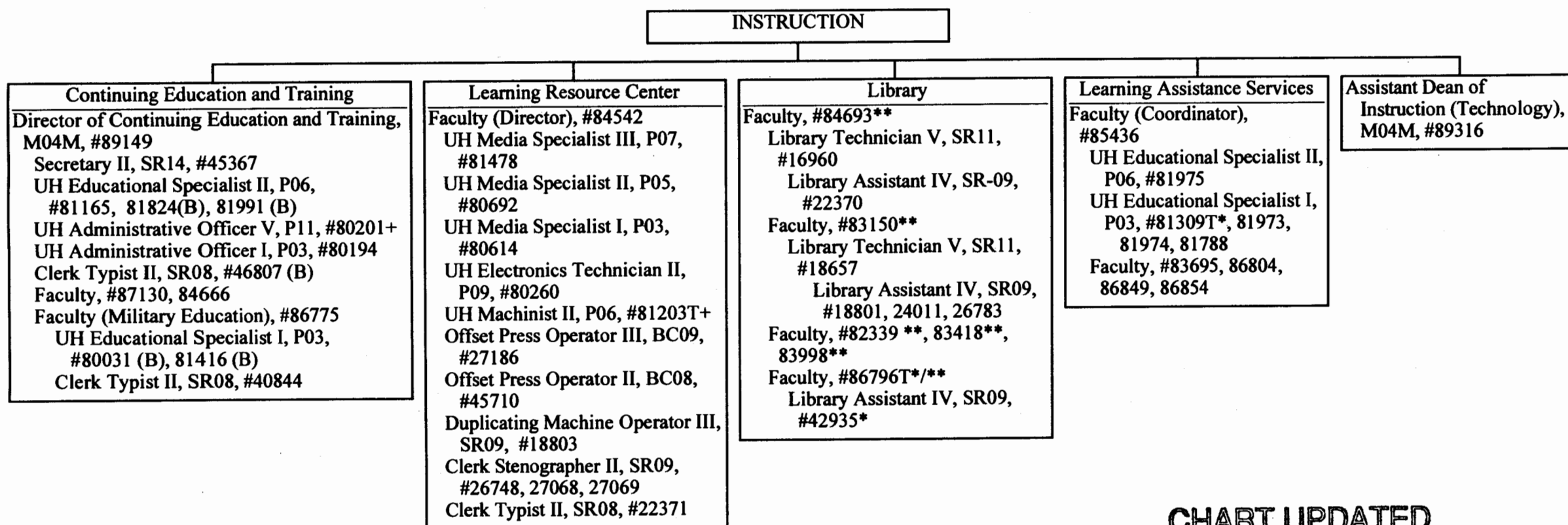
* Temporary Position
** Rotating Position
*** Position to be established

++ Courses to be taught by lecturers as needed

	Perm	Temp
General Fund	145.00	2.00
W) Revolving Funds	14.00	

STATE OF HAWAII
UNIVERSITY OF HAWAII
COMMUNITY COLLEGES
HONOLULU COMMUNITY COLLEGE
INSTRUCTION

Position Organization Chart
Chart III A



SUPERSEDED
Date OCT 19 2001

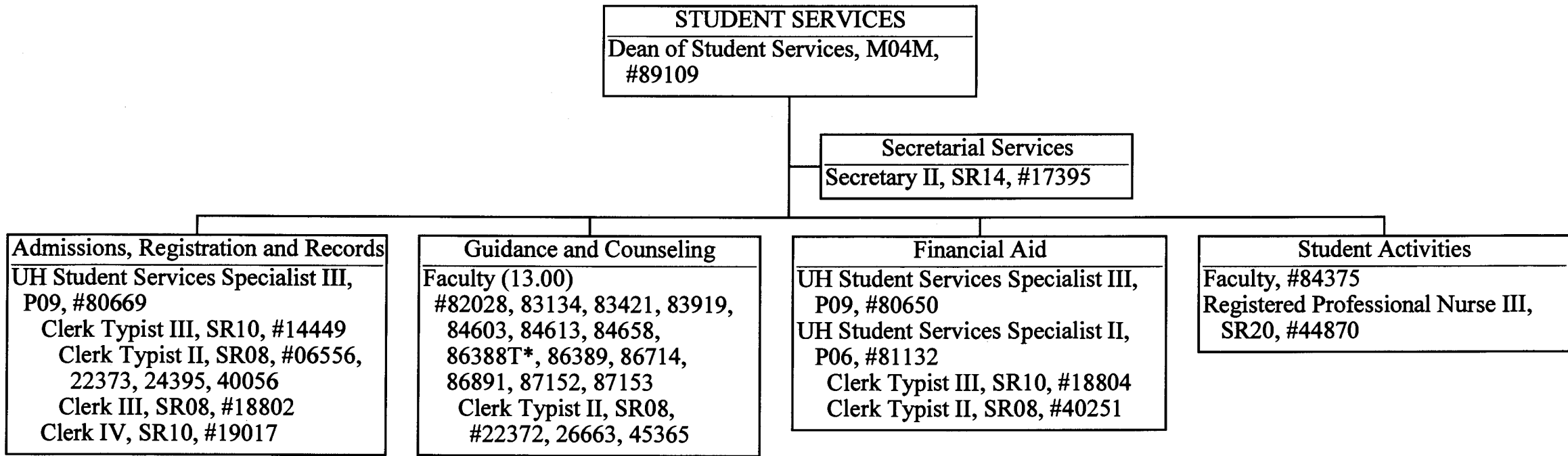
CHART UPDATED
DATE JUN 30 2001

* Temporary Position
 ** Rotating Position
 + To Be Redescribed

	<u>Perm</u>	<u>Temp</u>
General Fund	42.00	4.00
(B) Special Funds	5.00	

STATE OF HAWAII
UNIVERSITY OF HAWAII
COMMUNITY COLLEGES
HONOLULU COMMUNITY COLLEGE
STUDENT SERVICES

Position Organization Chart
Chart IV



SUPERSEDED
Date OCT 19 2001

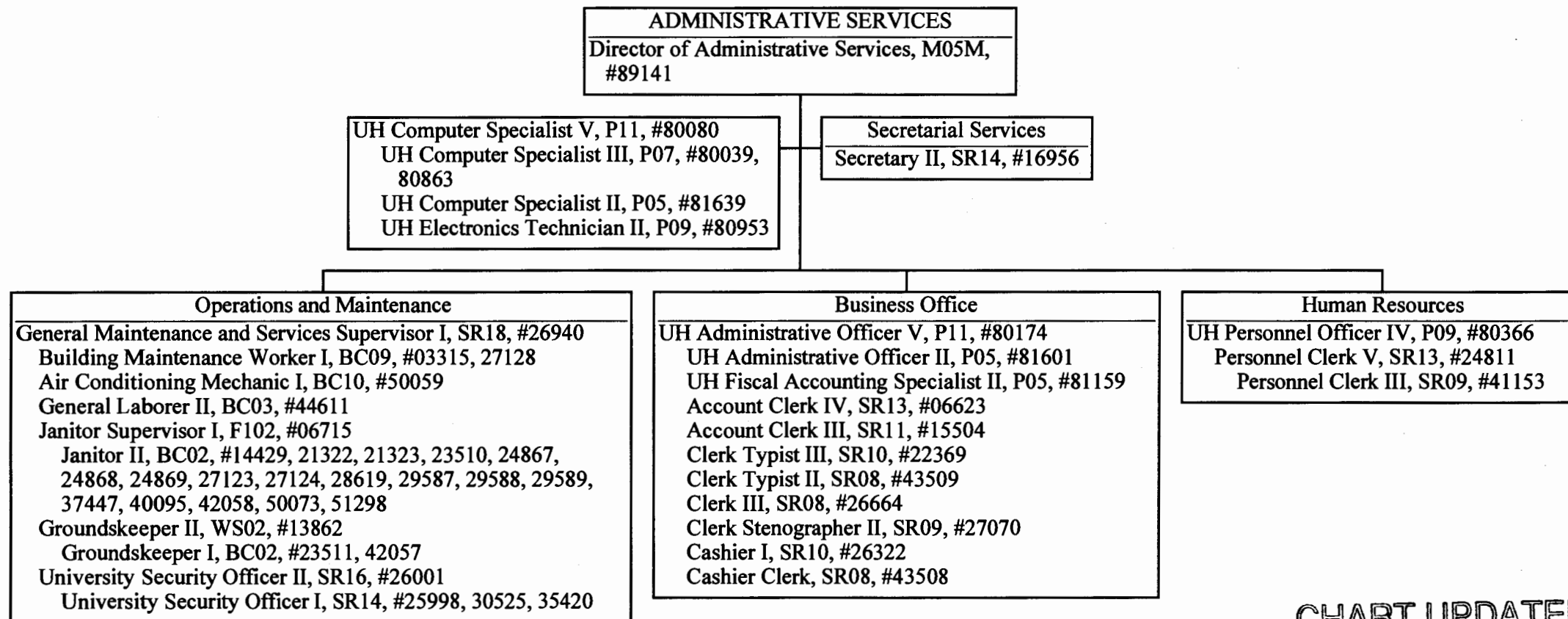
CHART UPDATED
DATE JUN 30 2001

* Temporary Position

	<u>Perm</u>	<u>Temp</u>
General Fund	31.00	1.00

STATE OF HAWAII
UNIVERSITY OF HAWAII
COMMUNITY COLLEGES
HONOLULU COMMUNITY COLLEGE
ADMINISTRATIVE SERVICES

Position Organization Chart
Chart V



SUPERSEDED
Date OCT 19 2001

CHART UPDATED
DATE JUN 30 2001

General Fund Perm
52.00

SUPERSEDED
Date JUN - 5 2002

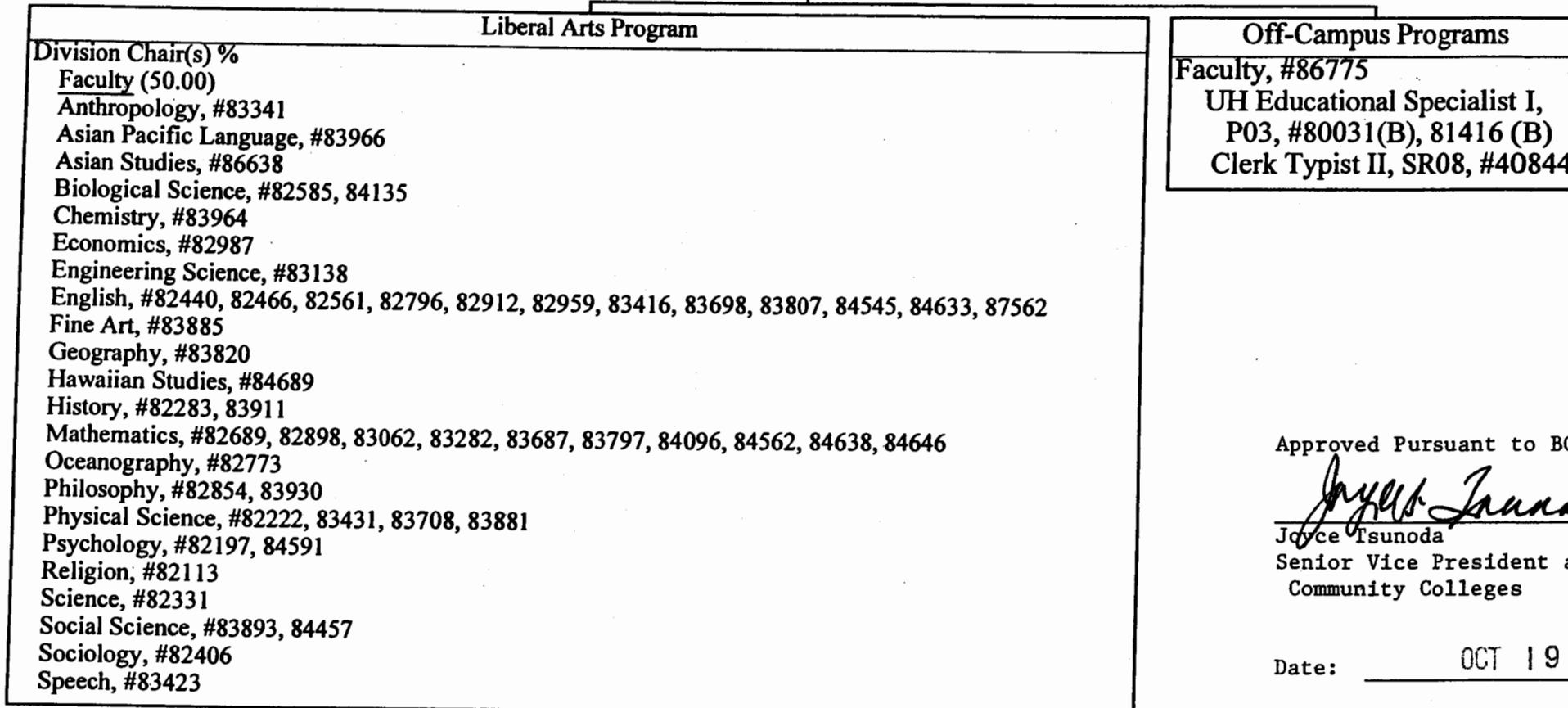
University College
Assistant Dean, M04M, #89111+

Secretarial Services
Secretary II, SR14, #24735+
Clerk Stenographer II, SR09, #27069+

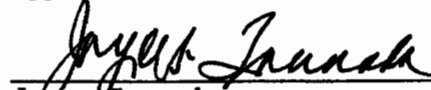
STATE OF HAWAII
UNIVERSITY OF HAWAII
COMMUNITY COLLEGES
HONOLULU COMMUNITY COLLEGE
ACADEMIC AFFAIRS

Organization Chart

Chart IIIA



Approved Pursuant to BOR Action:


Joyce Tsunoda
Senior Vice President and Chancellor For
Community Colleges

Date: OCT 19 2001

- + To be redescribed
% Division Chair is appointed from any faculty position in the College.
Multiple Division Chairs may be appointed but each position in the
Division has only one immediate supervisor.

	<u>Perm</u>
General Fund	55.00
(B) Special Funds	2.00

Approved Pursuant to BOR Action:

Joyce Tsunoda

Joyce Tsunoda

Senior Vice President and Chancellor For
Community Colleges

Communication and Services
Assistant Dean, M04M, #89170+

STATE OF HAWAII
UNIVERSITY OF HAWAII
COMMUNITY COLLEGES
HONOLULU COMMUNITY COLLEGE

Organization Chart

Chart III C

Date: OCT 19 2001

Secretarial Services

Secretary II, SR14, #01825

Clerk Stenographer II, SR09, #27068+, 44568+

Communication and Services Programs

Division Chair(s) %

Faculty (29.00)

Administration of Justice, #83339

Communication Arts, #82969, 83894, 84471

Computing, Electronics, and Networking Technology, #83116, 83699, 86615, 86620, 86677

Cosmetology, #82990, 83649, 83825, 84099

UH Educational and Academic Support Specialist, P01, #80879(B)+@

Fashion Technology, #84681

Food Science and Human Nutrition, #82883

Human Services, #82843, 83529, 83838, 84122, 86639, 86907, 86909, 86980, 87028, 87029, 87031, 87032

UH Early Childhood Specialist, #94626F (B)\$

UH Early Childhood Specialist III, P07, #80699, 81576, 81679, 81786, 81822,
80809(B), 80817(B), 80831(B)

UH Early Childhood Specialist I, P01, 80832(B)^, 80834(B)^, 80835(B)^,
80839(B)^, 80844(B)^, 80845(B)^, 80846(B)^, 80862(B)^

Information and Computer Science, #82233, 84669

UH Educational Specialist II, P06, #81165+

UH Educational and Academic Support Specialist, P01, #80877(B)

SUPERSEDED

Date JUN - 5 2002

+ To be redescribed

% Division Chair is appointed from any faculty position in the College.
Multiple Division Chairs may be appointed. but each position in the
Division has only one immediate supervisor

@ Supervised by one of the faculty positions

^ Supervised by one of the senior APT positions

\$ To be established

General Fund
(B) Special Funds

Perm
39.00
14.00