

STATE OF HAWAII
UNIVERSITY OF HAWAII
COMMUNITY COLLEGES
MAUI COMMUNITY COLLEGE

Organization Chart

Chart I

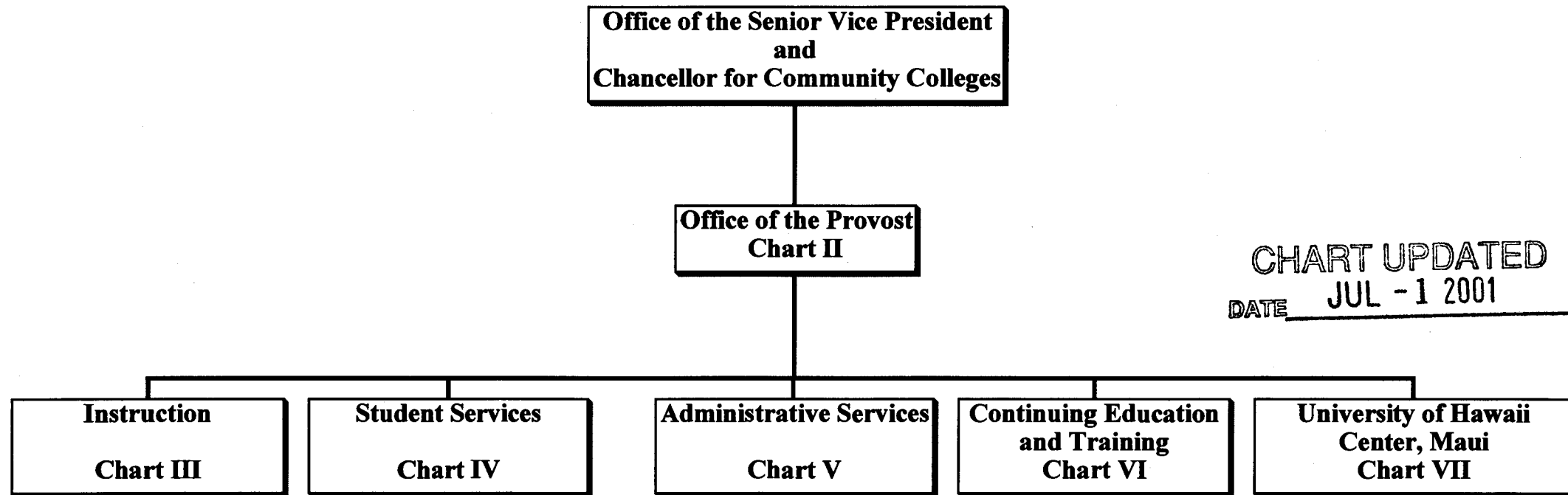


CHART UPDATED
DATE JUL - 1 2001

	Perm	Temp
General Fund	164.50	3.00
(B) Special Funds	7.50	
(W) Revolving Funds	2.00	

STATE OF HAWAII
UNIVERSITY OF HAWAII
COMMUNITY COLLEGES
MAUI COMMUNITY COLLEGE
OFFICE OF THE PROVOST

Position Organization Chart

Chart II

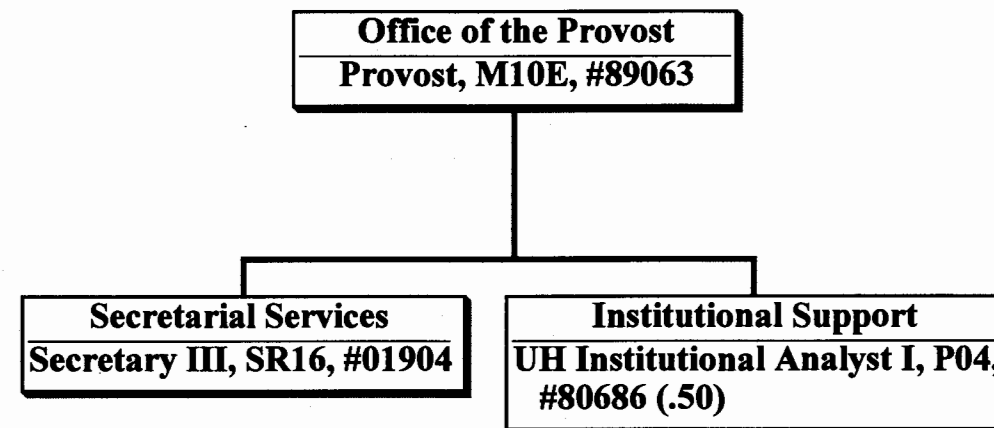


CHART UPDATED
DATE JUL -1 2001

General Fund $\frac{\text{Perm}}{2.50}$

STATE OF HAWAII
UNIVERSITY OF HAWAII
COMMUNITY COLLEGE
MAUI COMMUNITY COLLEGE
INSTRUCTION

Position Organization Chart

Chart III

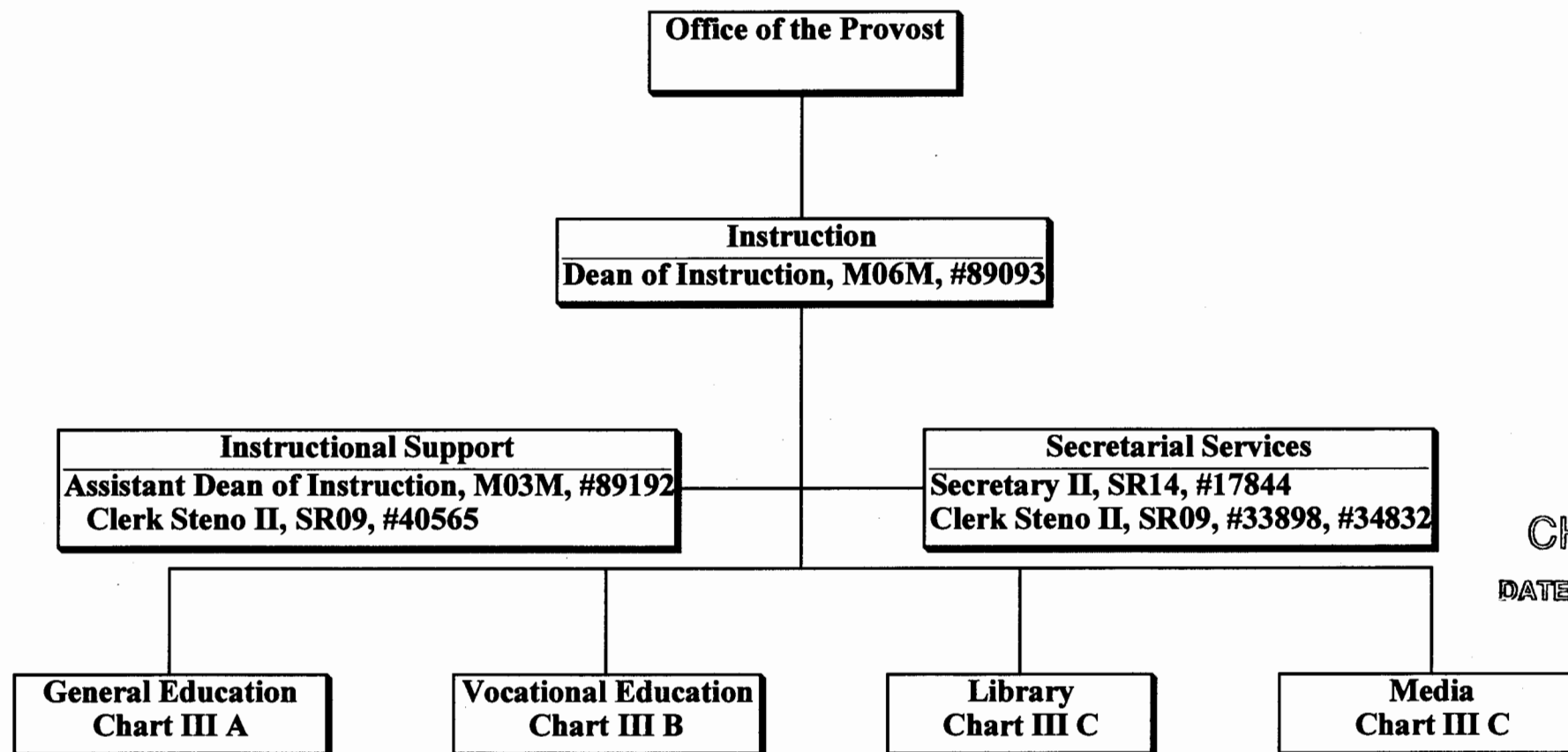


CHART UPDATED
DATE JUL - 1 2001 ()

General Fund Perm
6.00

STATE OF HAWAII
UNIVERSITY OF HAWAII
COMMUNITY COLLEGES
MAUI COMMUNITY COLLEGE
INSTRUCTION

Position Organization Chart

Chart III A

Instruction

General Education

Math/Science Division

Chairperson**

Faculty (14.50), #82356, #82660, #82754, #83018, #83290, #83632, #83833, #83866, #84011, #84137, #84570, #86073, #86725, #86932, #82666 (.50)

UH Educational Specialist I, P03, #81658

UH Educational & Academic Support Specialist, P01, #81730, #81731

Account Clerk III, SR11, #35751

Language Arts Division

Chairperson**

Faculty (11.00), #82199, #82408, #82636, #82958, #83093, #83898, #84148, #84367, #84482, #84998, #85074

UH Educational Specialist II, P06, #81214+

Clerk Steno II, SR09, #47721

Social Science/Humanities Division

Chairperson**

Faculty (15.00), #82665, #82778, #82798, #83206, #83377, #83546, #83613, #83628, #84214, #84312, #84997, #84999, #86887T*, #87088,
#86857T* (.50), #86888T* (.50)

Outreach

Faculty (2.00), #86630, #86816

* Temporary Position

+ Supervised by one of the faculty positions

** Chairperson is appointed from among instructional positions within the division

CHART UPDATED
DATE JUL - 1 2001

	Perm	Temp
General Fund	4 6.50	2.00

STATE OF HAWAII
UNIVERSITY OF HAWAII
COMMUNITY COLLEGES
MAUI COMMUNITY COLLEGE
INSTRUCTION

Position Organization Chart

Chart III B

Instruction

Vocational Education

Business Division

Chairperson**

Faculty (12.00) #82391, #82410, #82493, #82559, #82608, #83211,
#83274, #83325, #83465, #83739, #84084, #84996

Clerk Steno II, SR09, #47720

Nursing Division

Chairperson**

Faculty (13.50), #82297, #83108, #84174, #84412, #84465, #86681,
#86682, #86683, #86727, #86729, #86730, #86731, #86732, #86734 (.50)

Clerk Steno II, SR09, #28848

Clerk Typist II, SR08, #41707 (.50)

Vocational/Technical Division

Chairperson**

Faculty (8.00), #82020, #83530, #83822, #84025, #84124, #84339,
#84345, #86723

Cooperative Education

Faculty (2.50), #86623, #87085, #84083 (.50)

Clerk Typist II, SR08, #46625

CHART UPDATED
JUL - 1 2001
DATE _____

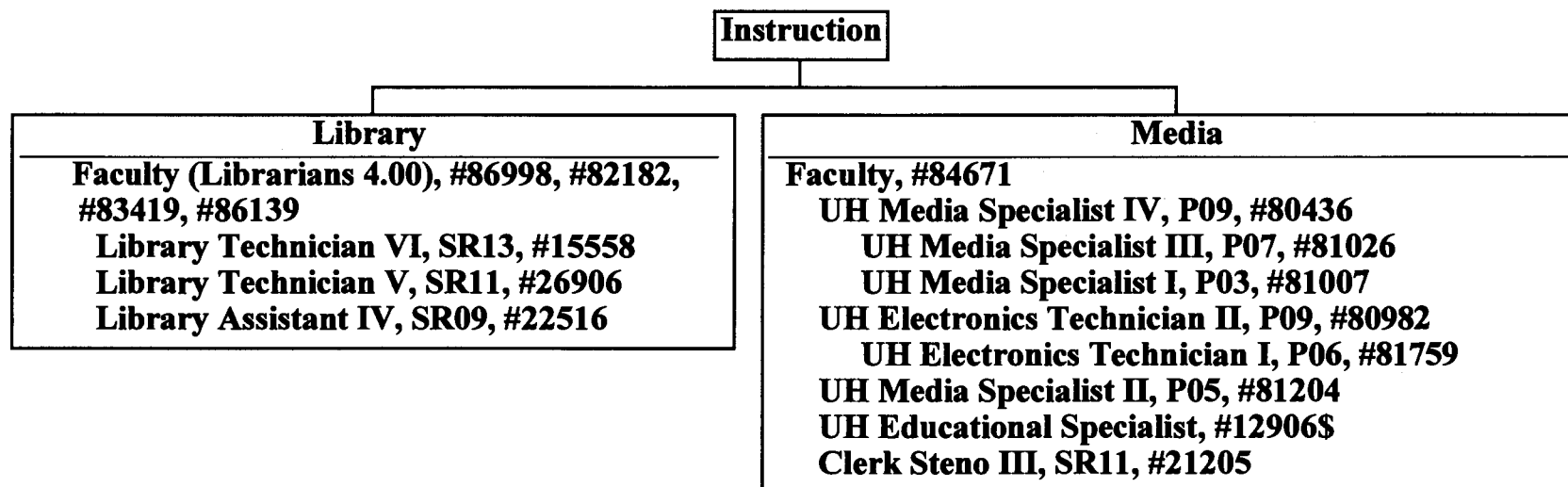
** Chairperson is appointed from among instructional positions within the division

General Fund Perm
39.50

STATE OF HAWAII
UNIVERSITY OF HAWAII
COMMUNITY COLLEGES
MAUI COMMUNITY COLLEGE
INSTRUCTION

Position Organization Chart

Chart III C



\$Effective 7/1/98, the position count was transferred from UH Manoa and must be established.

CHART UPDATED
JUL -1 2001
DATE _____

General Fund	Perm 16.00
--------------	---------------

STATE OF HAWAII
UNIVERSITY OF HAWAII
COMMUNITY COLLEGES
MAUI COMMUNITY COLLEGE
STUDENT SERVICES

Position Organization Chart

Chart IV

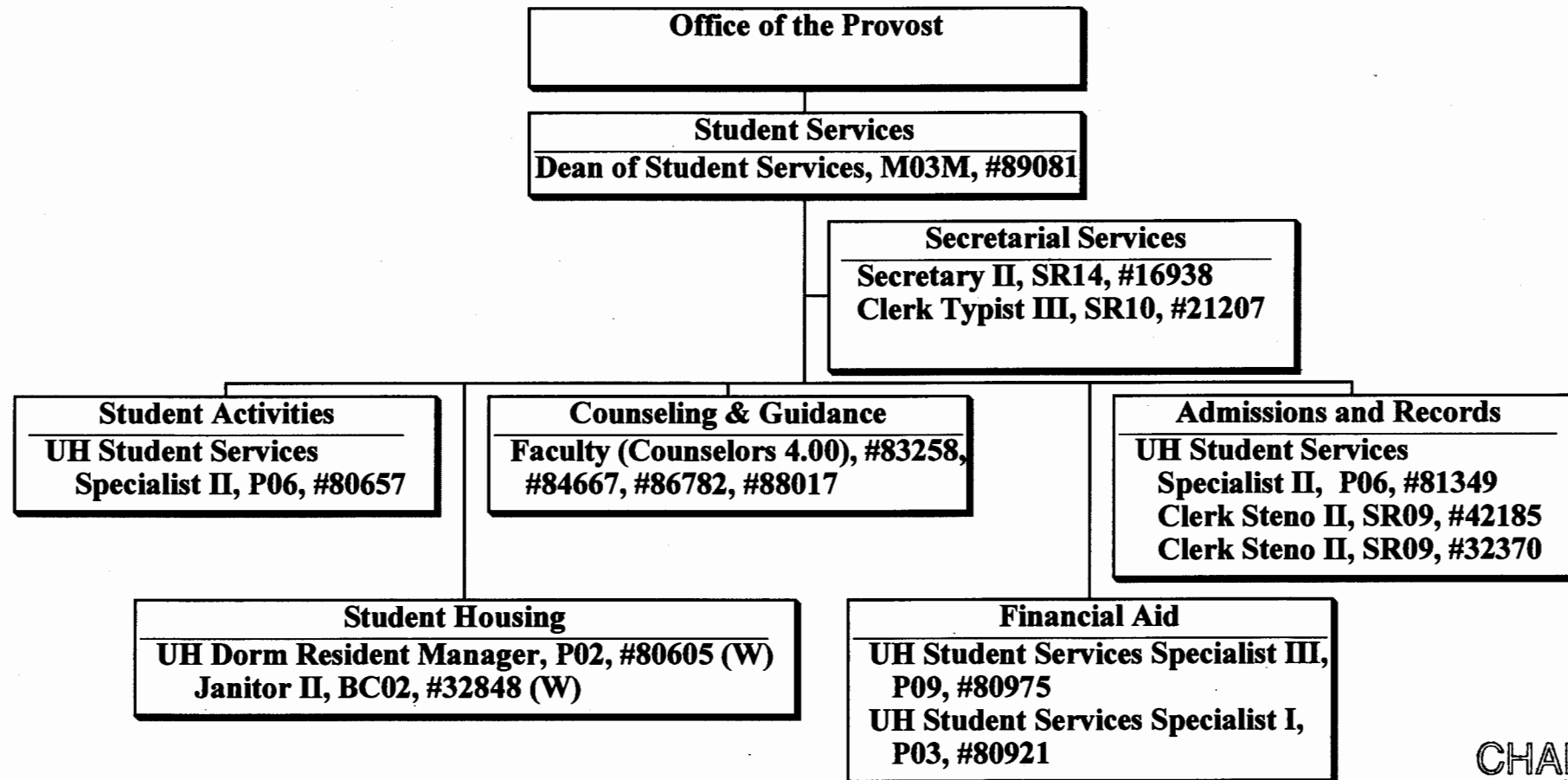


CHART UPDATED
DATE JUL -1 2001

	Perm
General Fund	13.00
(W) Revolving Funds	2.00

Position Organizational Chart

Chart V

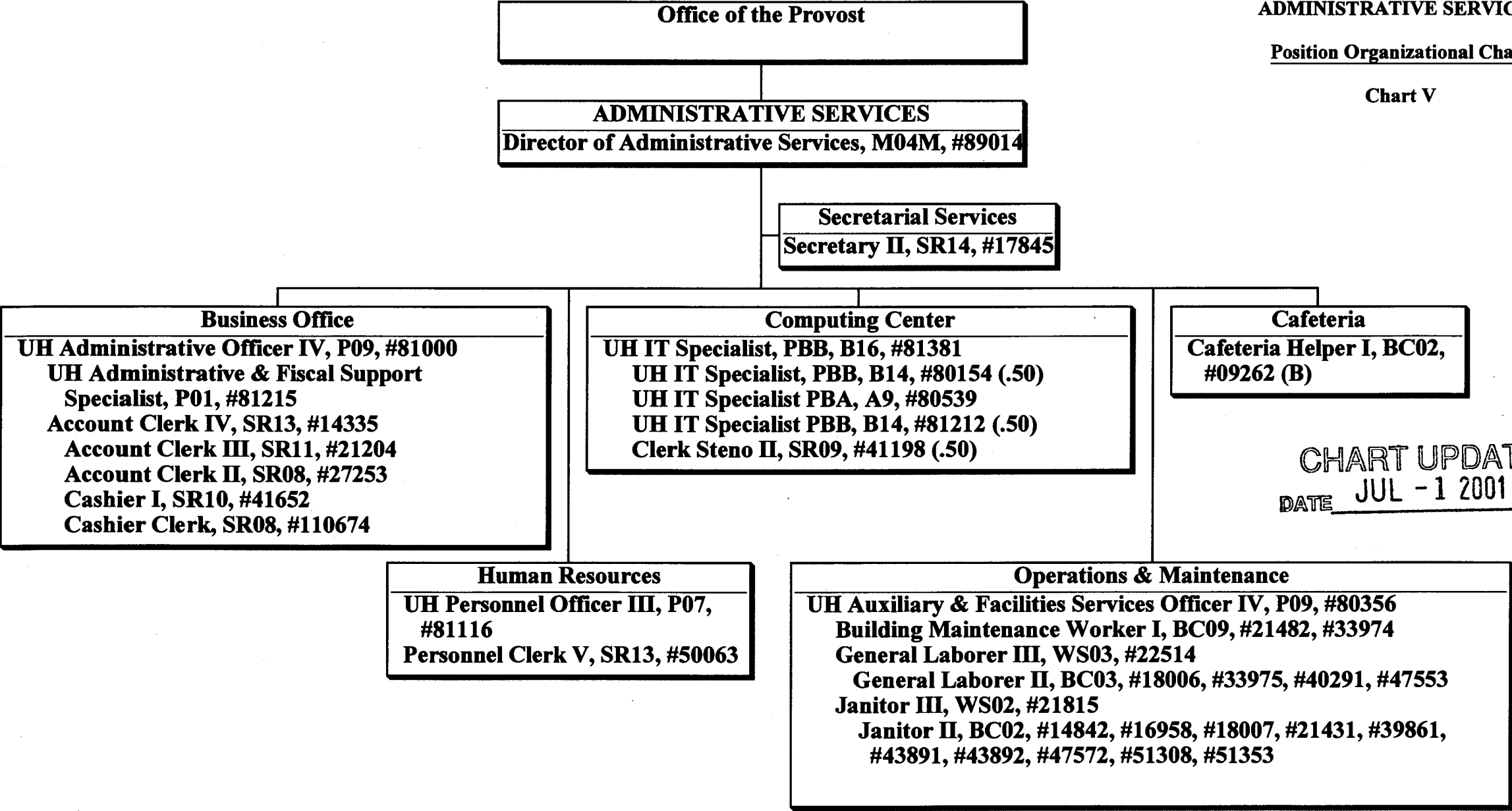


CHART UPDATED
DATE JUL -1 2001

	Perm
General Fund	33.50
(B) Special Funds	1.00

STATE OF HAWAII
UNIVERSITY OF HAWAII
COMMUNITY COLLEGES
MAUI COMMUNITY COLLEGE
CONTINUING EDUCATION
AND TRAINING

Position Organization Chart

Chart VI

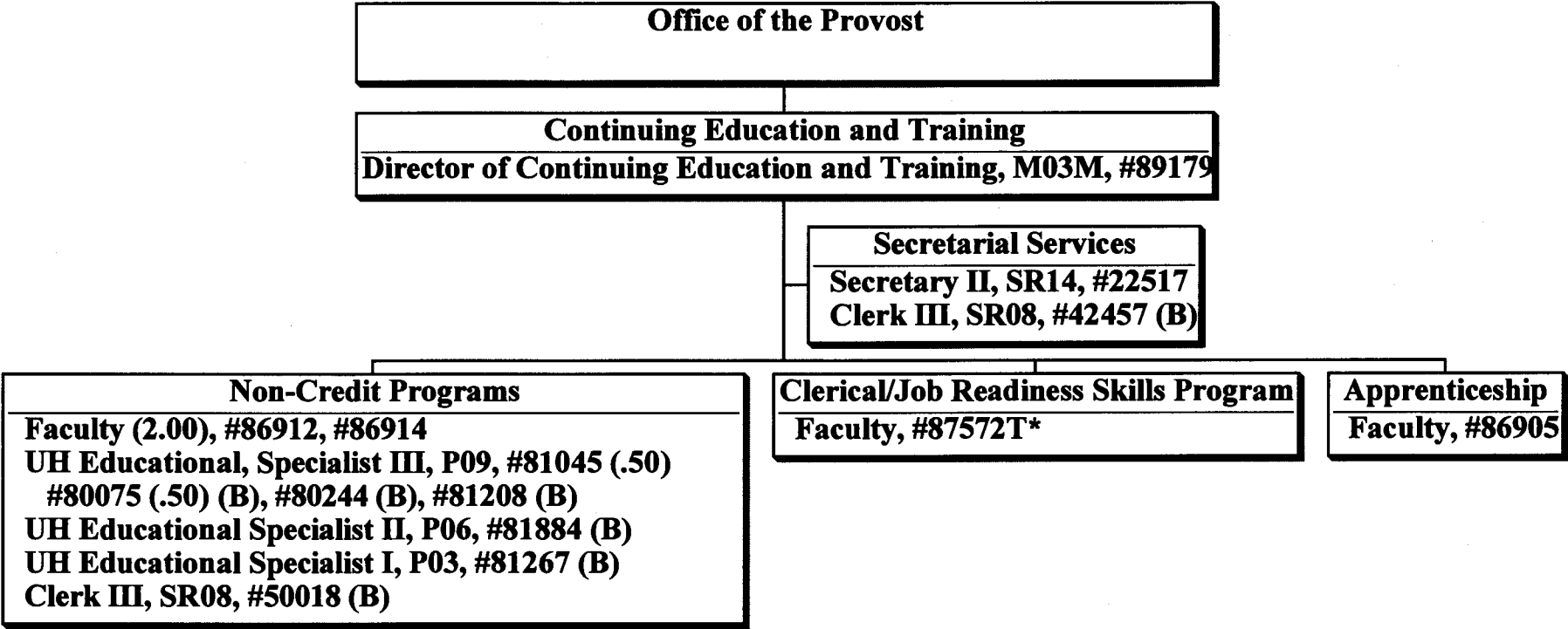


CHART UPDATED
DATE JUL -1 2001

* Temporary Position

	<u>Perm</u>	<u>Temp</u>
General Funds	5.50	1.00
(B) Special Funds	6.50	

STATE OF HAWAII
UNIVERSITY OF HAWAII
COMMUNITY COLLEGES
MAUI COMMUNITY COLLEGE
UNIVERSITY OF HAWAII CENTER, MAUI

Position Organization Chart

Chart VII

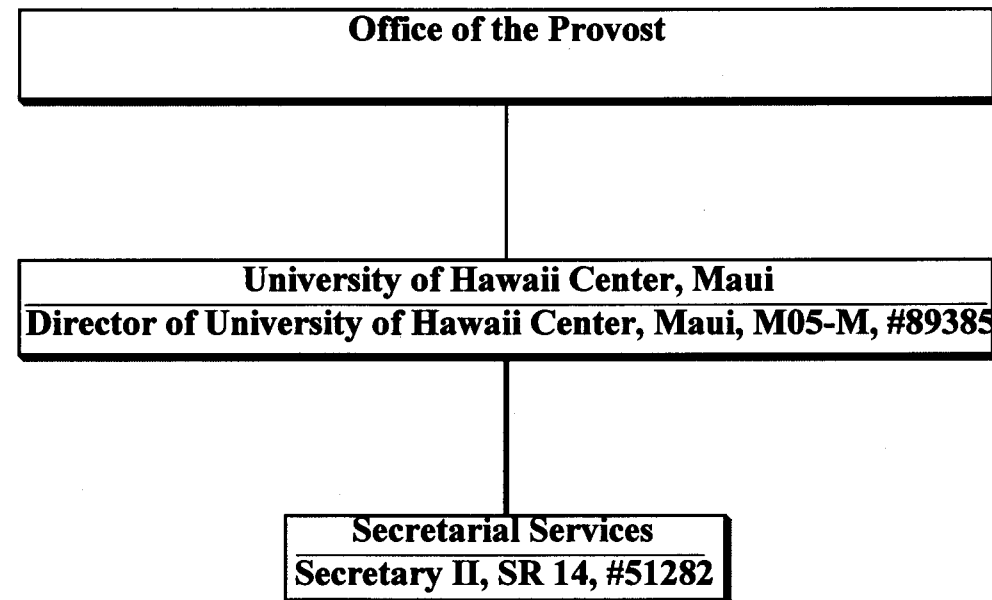


CHART UPDATED
DATE JUL - 1 2001

General Fund	<u>Perm</u>
	2.00