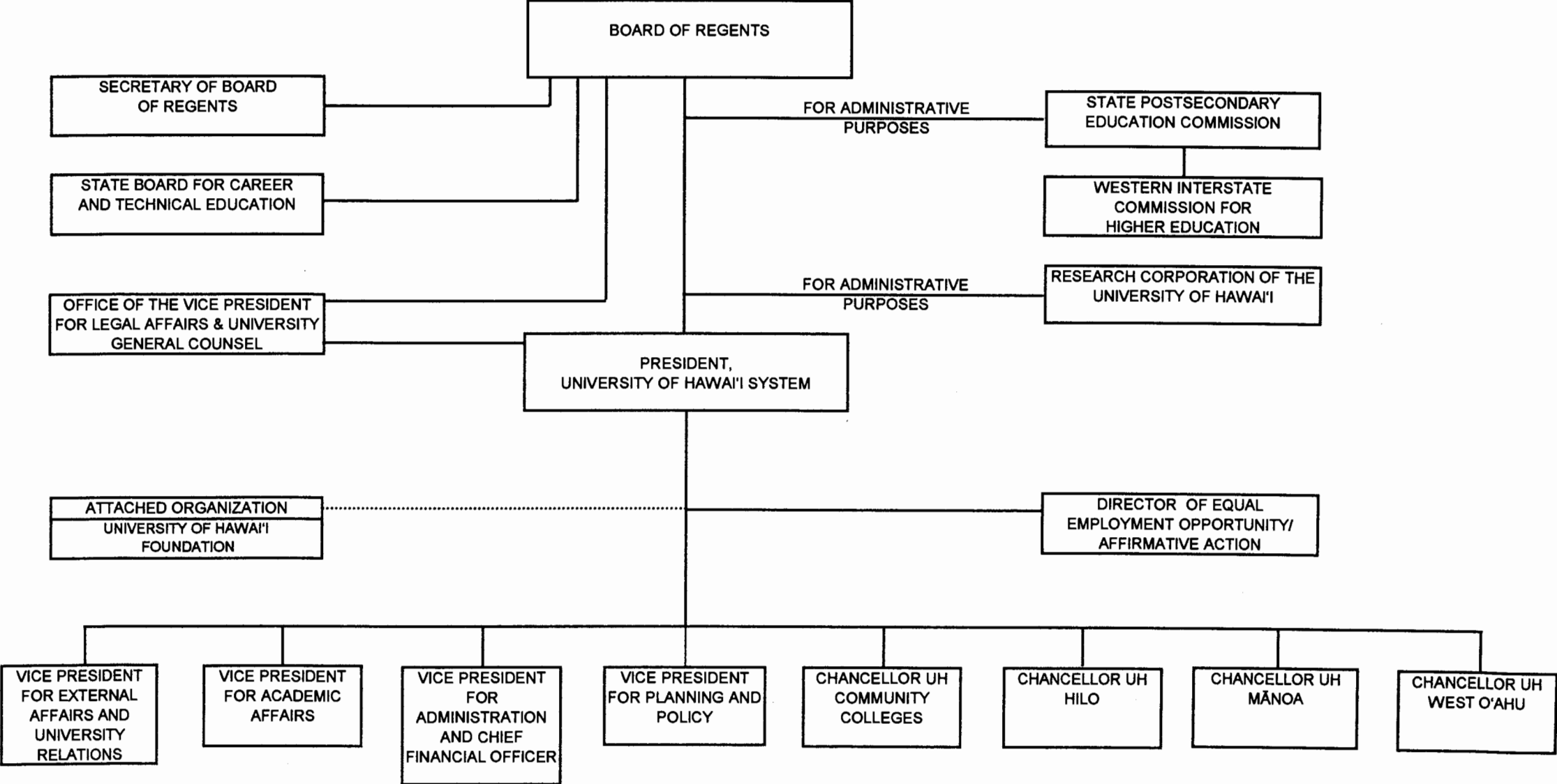


STATE OF HAWAII  
UNIVERSITY OF HAWAII  
SYSTEMWIDE ADMINISTRATION



STATE OF HAWAII  
UNIVERSITY OF HAWAII  
STATE POSTSECONDARY EDUCATION COMMISSION  
ORGANIZATION CHART

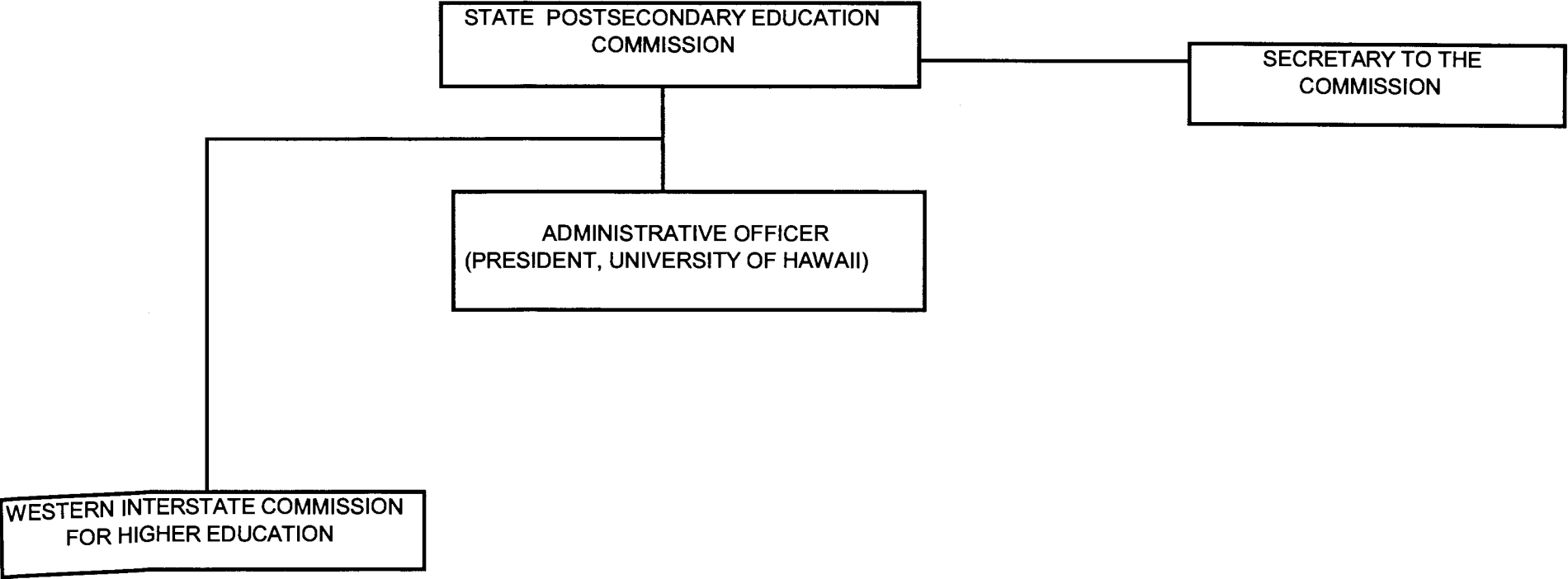
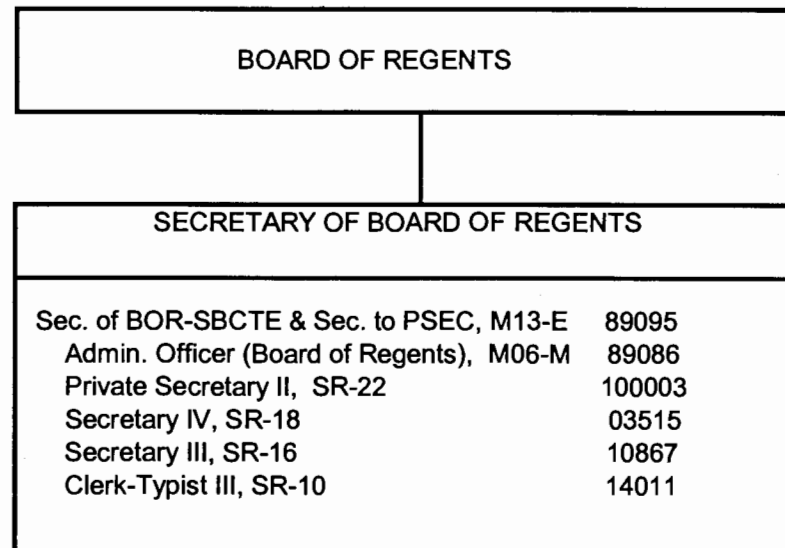


CHART UPDATED  
DATE JUL 01 2001

STATE OF HAWAII  
UNIVERSITY OF HAWAII  
STATEWIDE ADMINISTRATION  
SECRETARY OF THE BOARD OF REGENTS

POSITION ORGANIZATION CHART



**CHART UPDATED**  
**DATE** JUL 01 2001

General Funds: 6.00

STATE OF HAWAII  
UNIVERSITY OF HAWAII ADMINISTRATION  
OFFICE OF THE PRESIDENT, UH SYSTEM

POSITION ORGANIZATION CHART

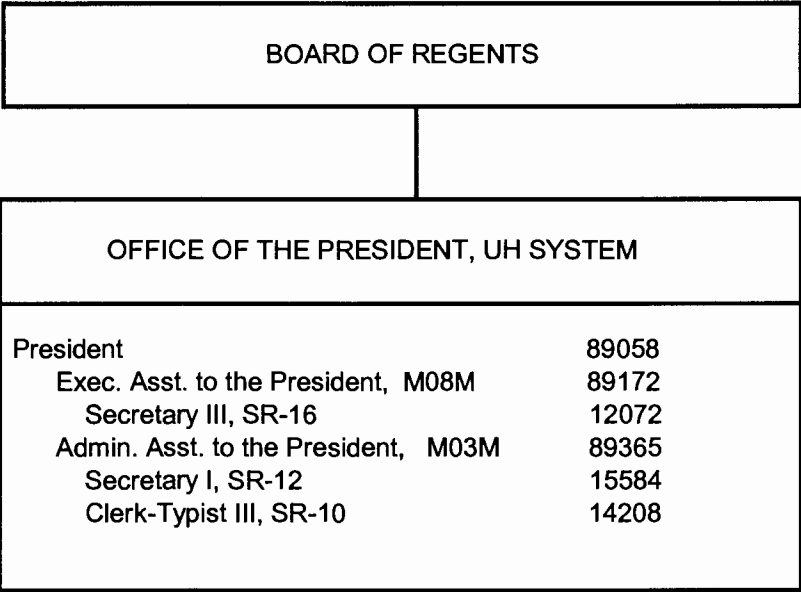
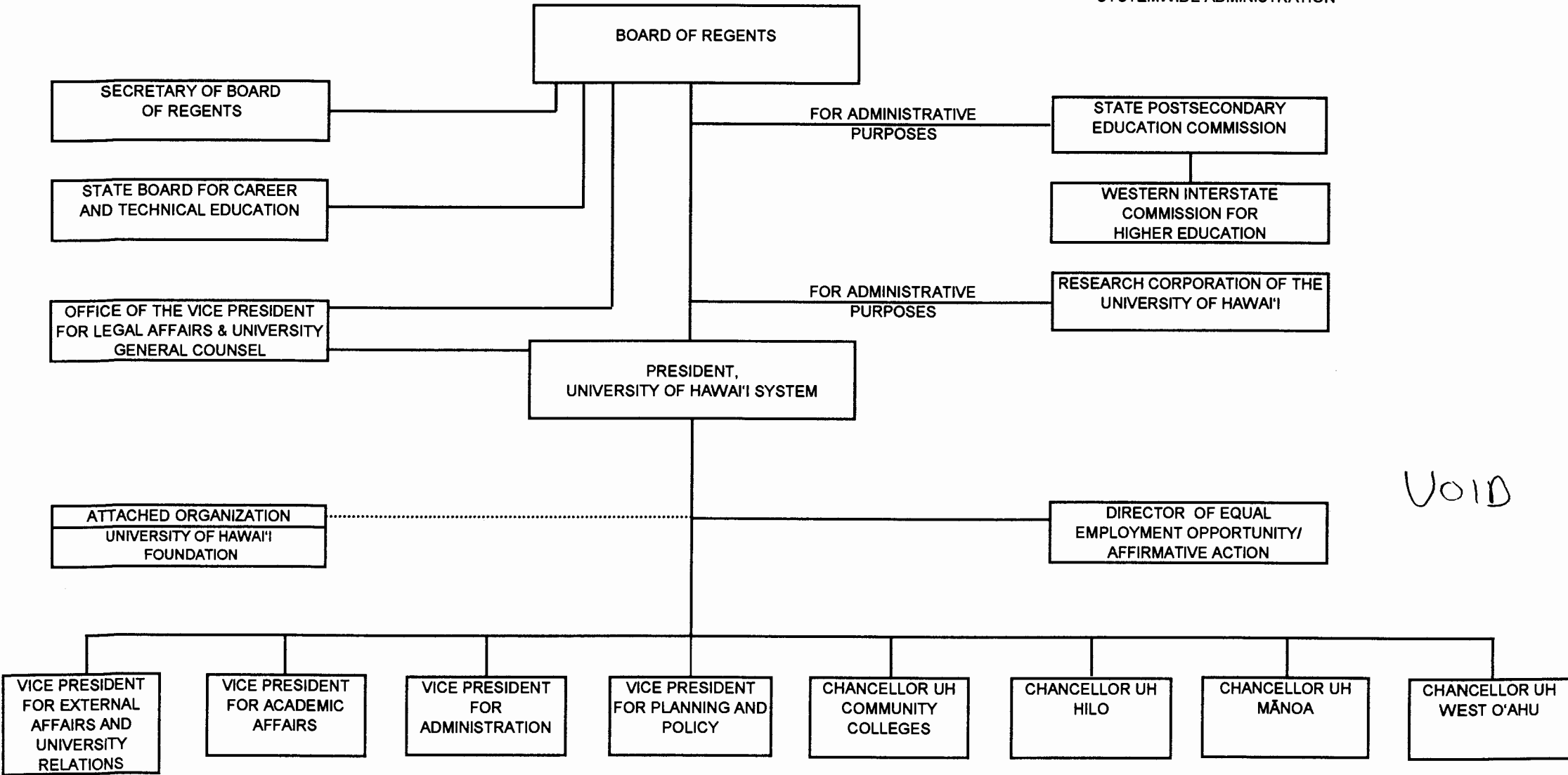


CHART UPDATED

DATE JUL 01 2001

STATE OF HAWAII  
UNIVERSITY OF HAWAII  
SYSTEMWIDE ADMINISTRATION



VOID

President, UH System

Office of Equal Employment Opportunity & Affirmative Action (Manoa)		
Director of EEO & AA M06M		#89236
Secretary II SR14		#46094
UH Personnel Officer II P05		#81963
UH Institutional Analyst I P04		#81959
*UH Registered Architect I P13		#81800

STATE OF HAWAII  
UNIVERSITY OF HAWAII  
OFFICE OF EQUAL EMPLOYMENT OPPORTUNITY  
& AFFIRMATIVE ACTION (MANOA)

POSITION ORGANIZATION CHART  
CURRENT

CHART UPDATED  
DATE JUL -1 2001

General Funds 5.00

\*position assigned to FPMO