

STATE OF HAWAII  
UNIVERSITY OF HAWAII  
UNIVERSITY OF HAWAII AT MANOA

INTERCOLLEGIATE ATHLETICS

CHART IV

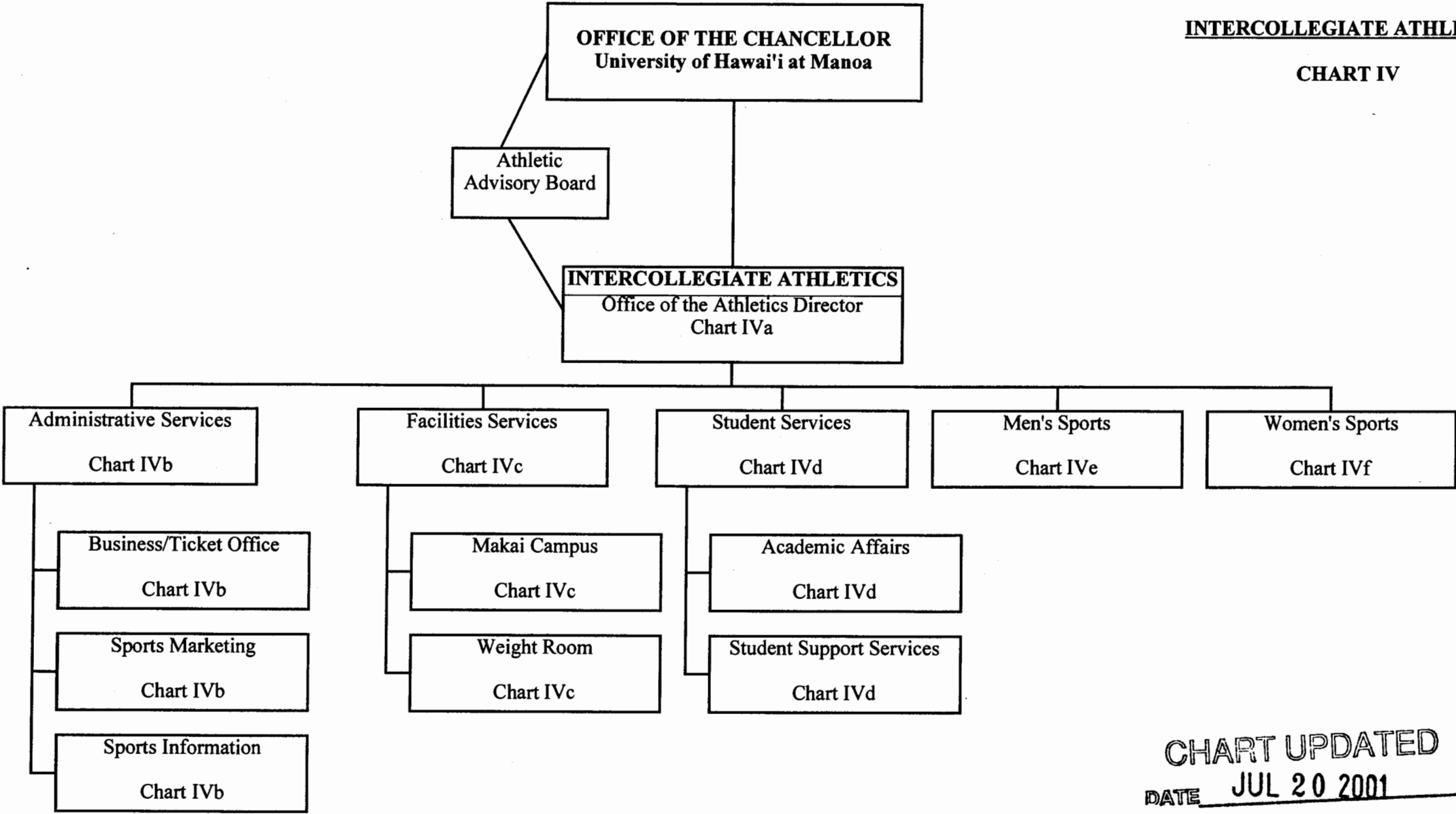
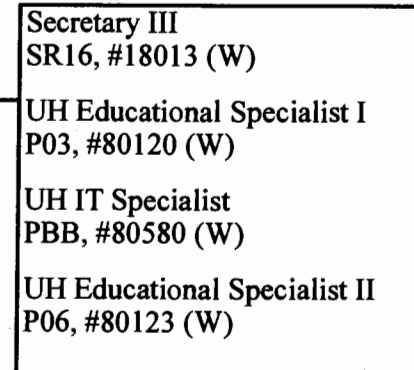
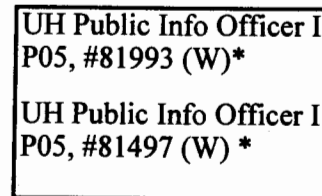
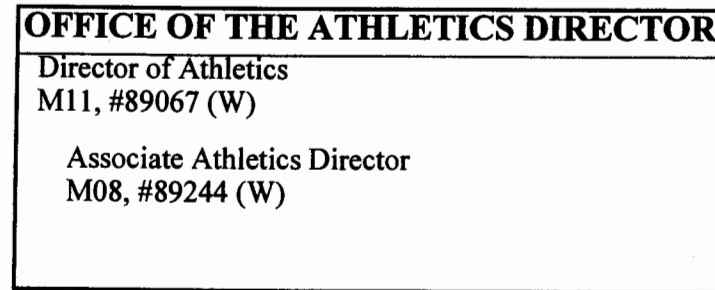


CHART UPDATED  
DATE JUL 20 2001

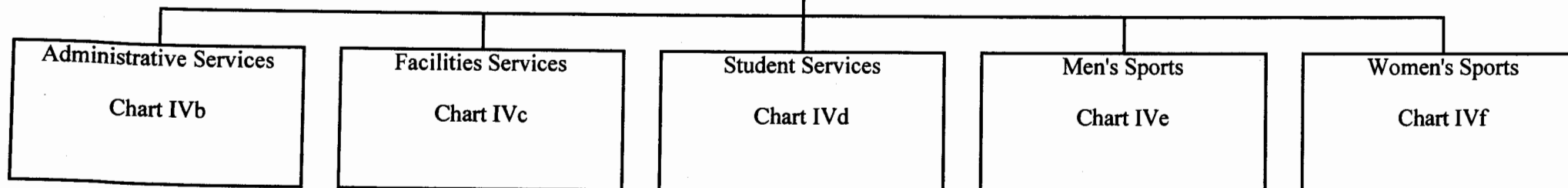
STATE OF HAWAII  
UNIVERSITY OF HAWAII  
UNIVERSITY OF HAWAII AT MANOA

INTERCOLLEGIATE ATHLETICS

**CHART IVa**



Pending Establishment:  
#99513F - Asst Athletic Director External Affairs  
#99514F - UH Public Information Officer I



\* Positions #81993 & #81497 report  
Directly to the Associate  
Athletics Director (Position #89244)

**CHART UPDATED**  
DATE JUL 20 2001

(W) Revolving Funds - 10.00

STATE OF HAWAII  
UNIVERSITY OF HAWAII  
UNIVERSITY OF HAWAII AT MANOA  
INTERCOLLEGIATE ATHLETICS

CHART IVb

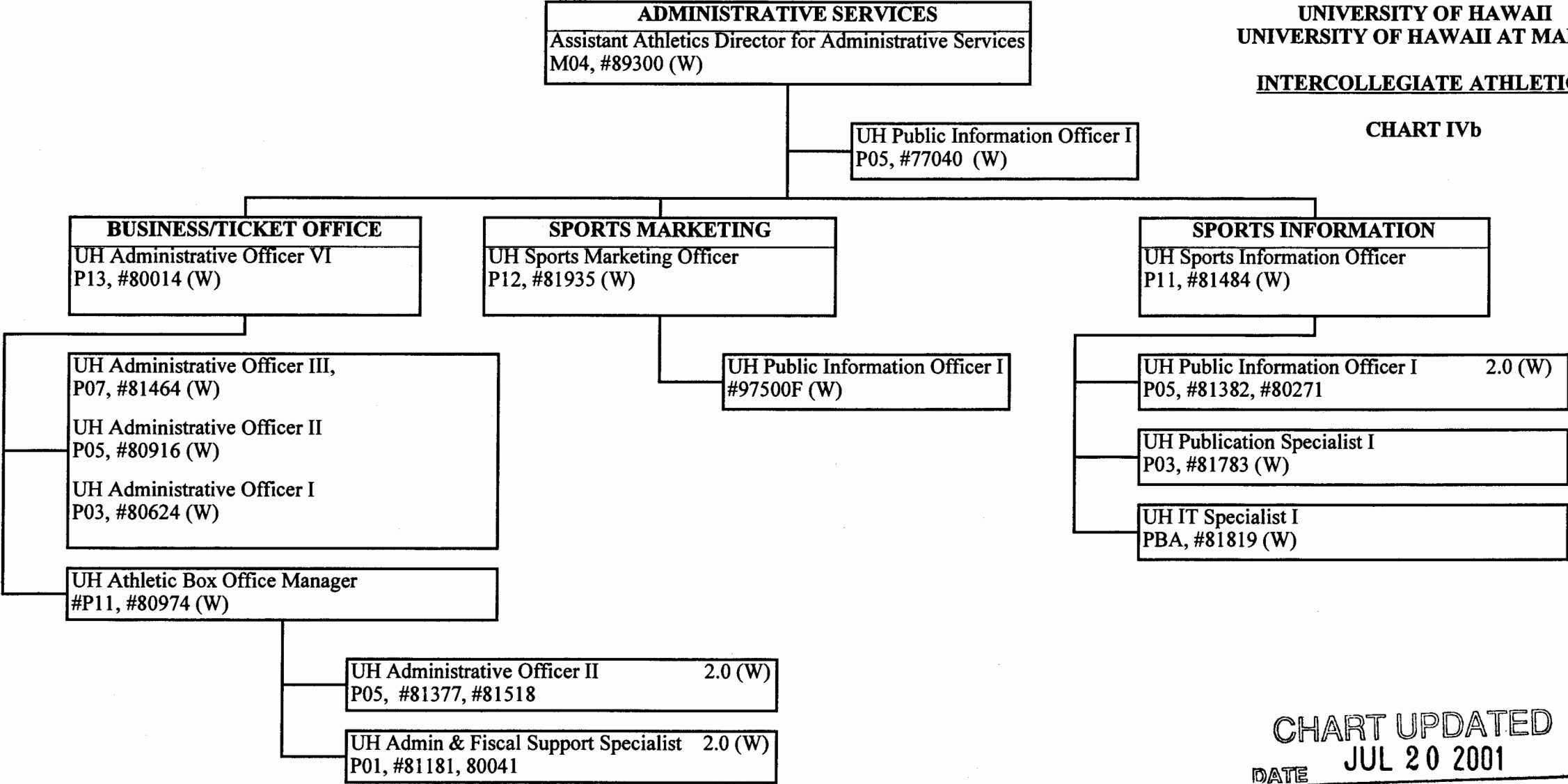


CHART UPDATED  
DATE JUL 20 2001

(W) Revolving Fund - 18.00

STATE OF HAWAII  
UNIVERSITY OF HAWAII  
UNIVERSITY OF HAWAII AT MANOA  
INTERCOLLEGIATE ATHLETICS

CHART IVc

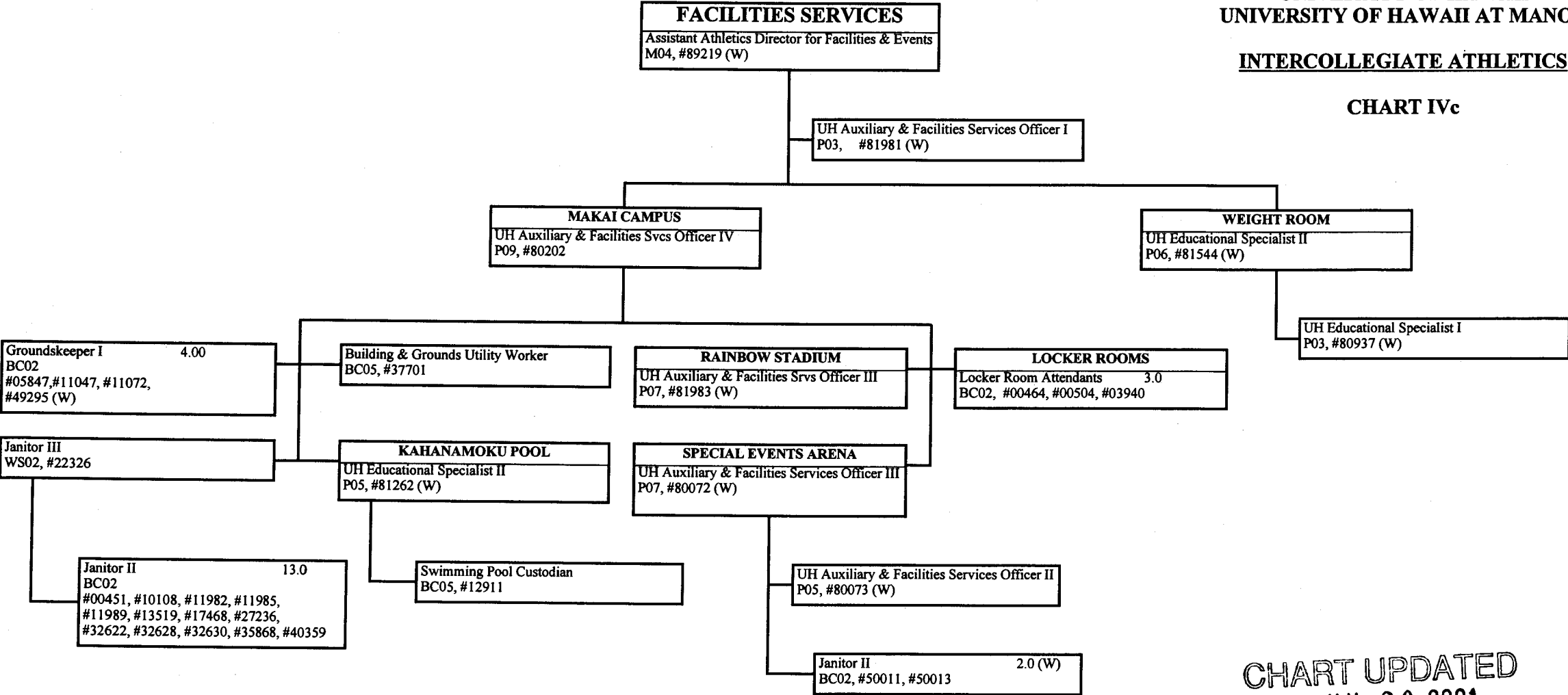


CHART UPDATED  
DATE JUL 20 2001

General Fund - 23.00  
(W) Revolving Fund - 11.00

STATE OF HAWAII  
UNIVERSITY OF HAWAII  
UNIVERSITY OF HAWAII AT MANOA

INTERCOLLEGIATE ATHLETICS

CHART IVd

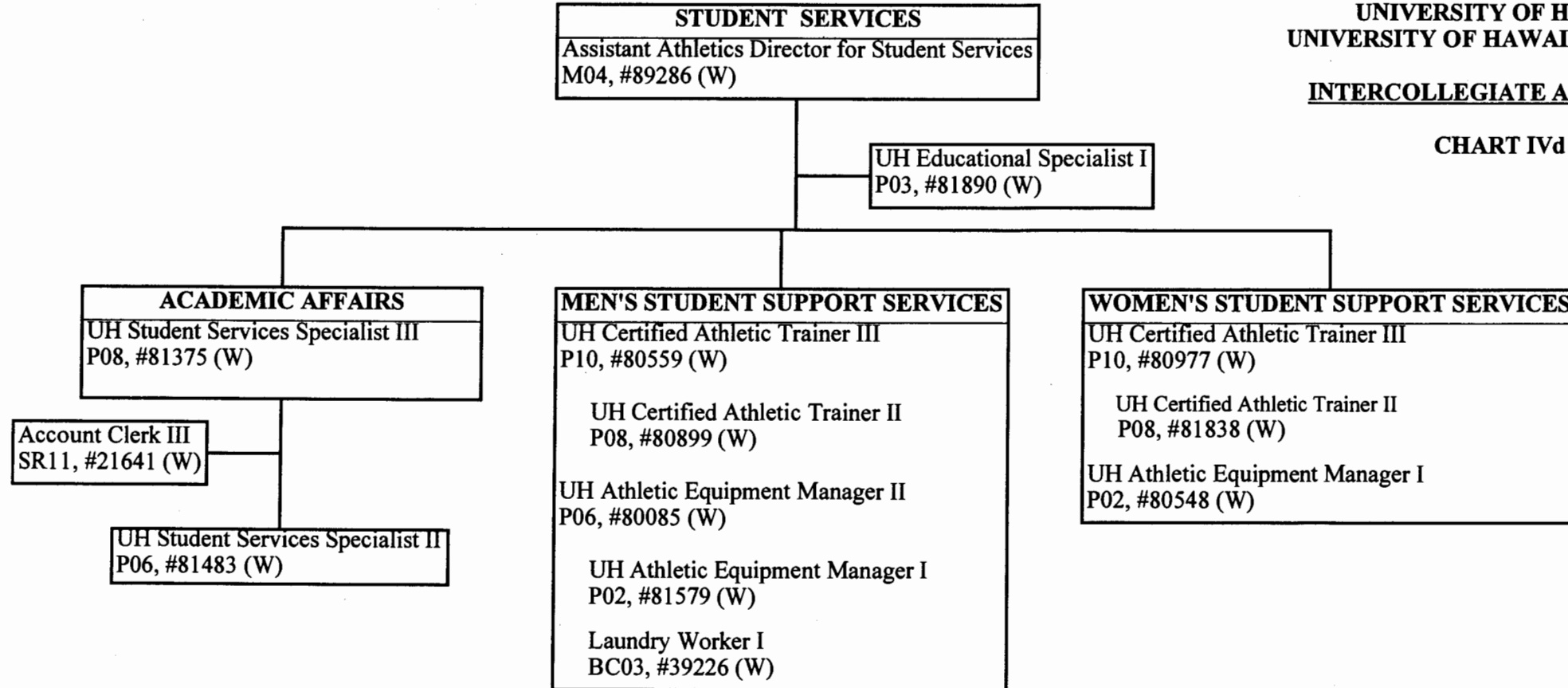


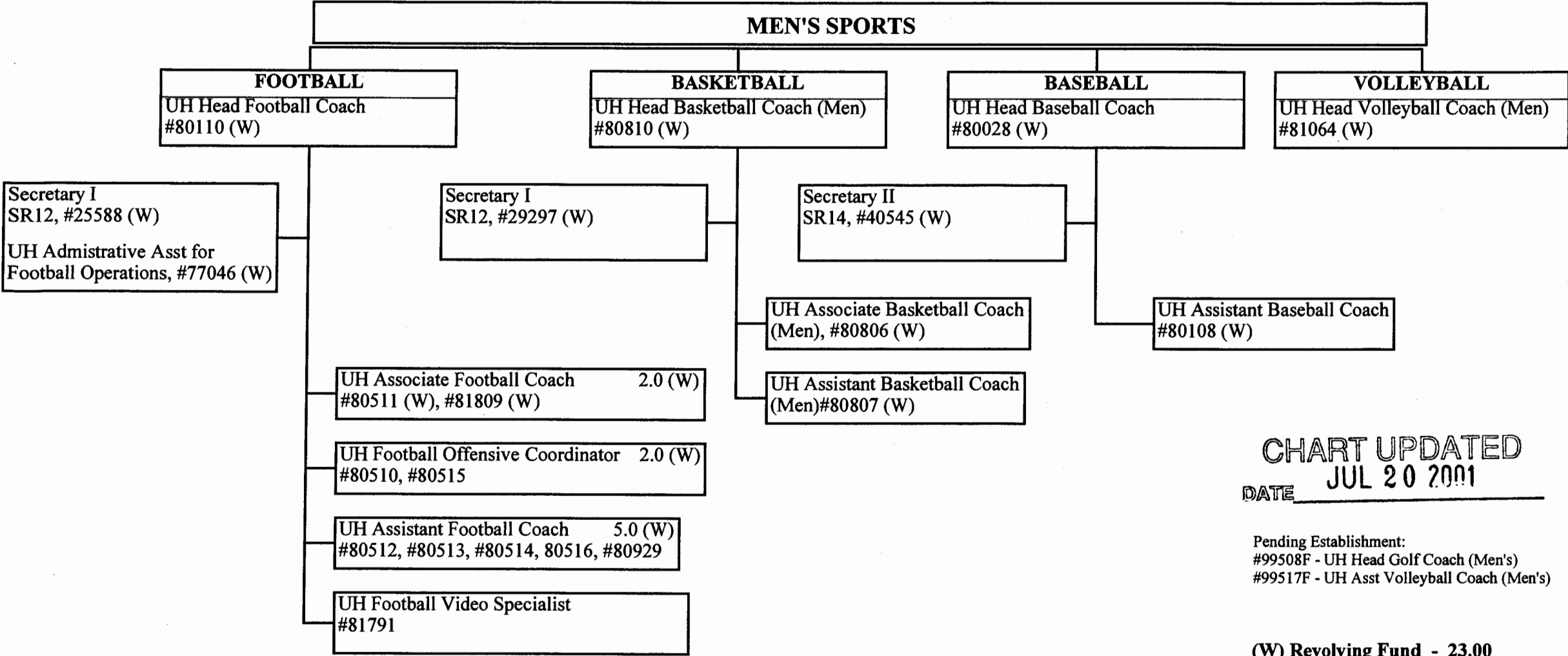
CHART UPDATED  
DATE JUL 20 2001

Pending Establishment:  
#99511F - UH Student Services Specialist II

(W) Revolving Fund - 14.00

STATE OF HAWAII  
UNIVERSITY OF HAWAII  
UNIVERSITY OF HAWAII AT MANOA  
INTERCOLLEGIATE ATHLETICS

CHART IVe



STATE OF HAWAII  
UNIVERSITY OF HAWAII  
UNIVERSITY OF HAWAII AT MANOA

INTERCOLLEGIATE ATHLETICS

CHART IVf

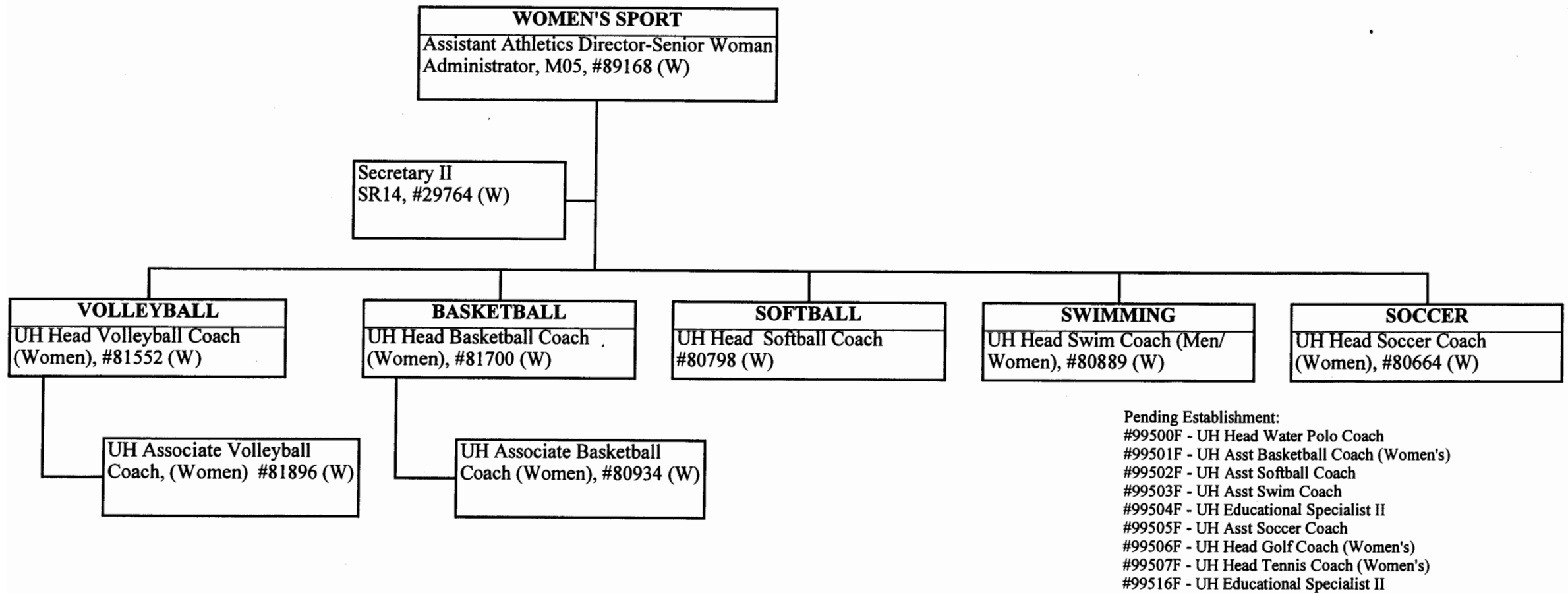


CHART UPDATED  
JUL 20 2001  
DATE \_\_\_\_\_

Revolving Fund - 18.00