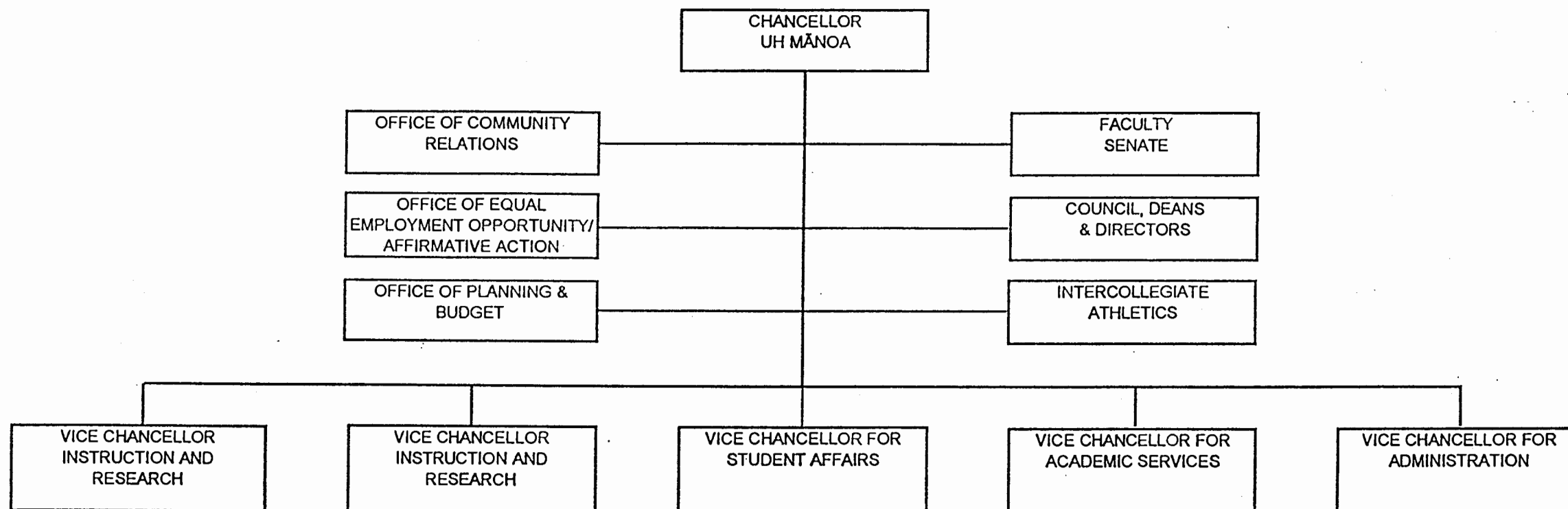


STATE OF HAWAII  
UNIVERSITY OF HAWAII  
OFFICE OF THE CHANCELLOR  
UNIVERSITY OF HAWAII AT MĀNOA



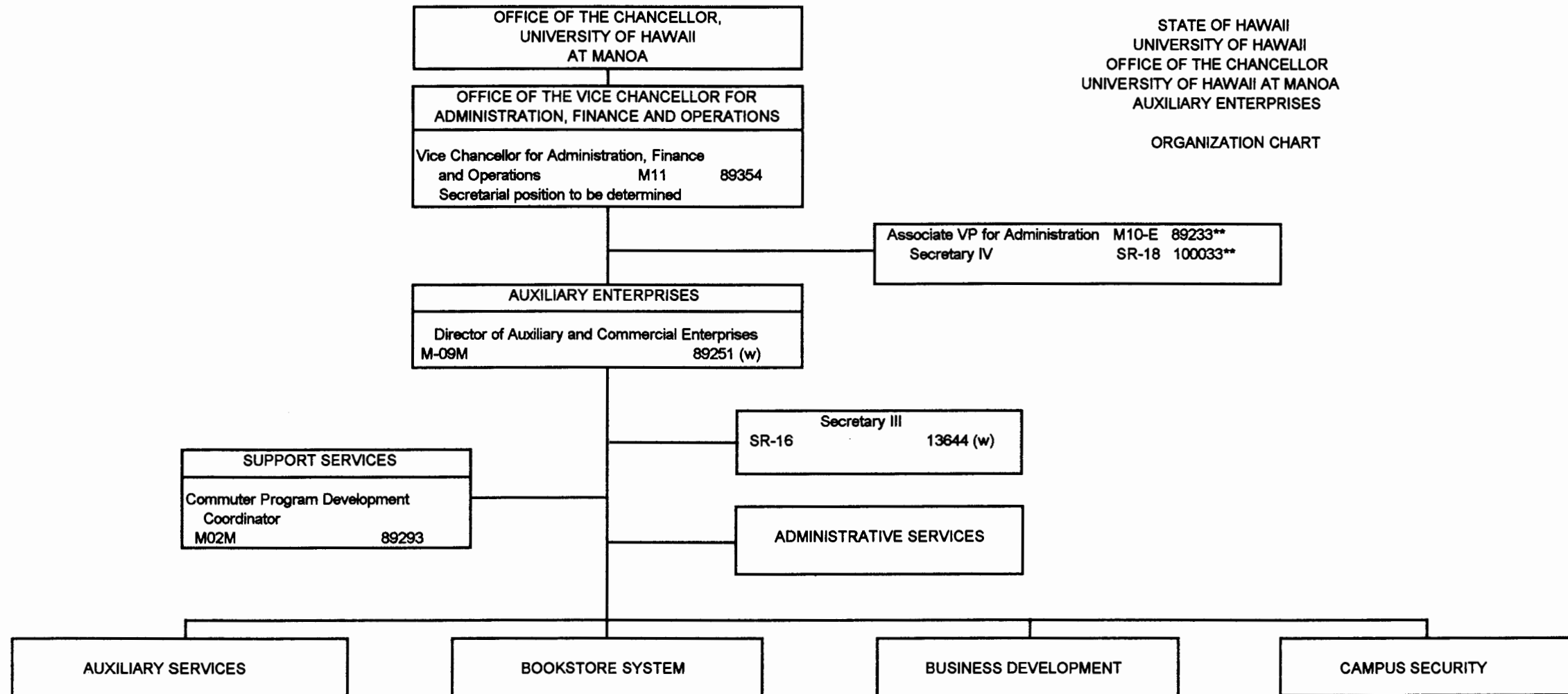
APPROVED BY THE UNIVERSITY  
BOARD OF REGENTS

JAN 19 2001

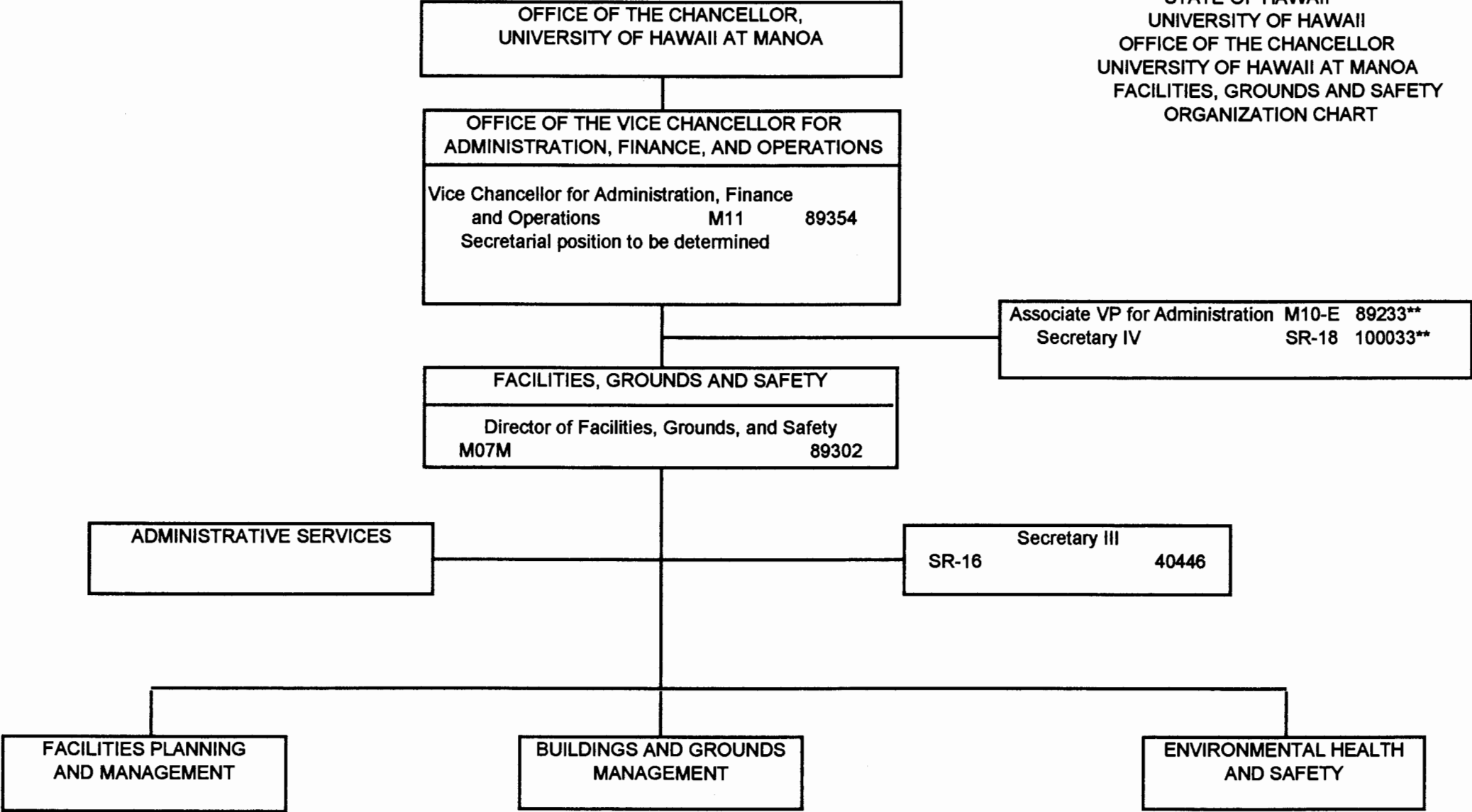
Date

STATE OF HAWAII  
UNIVERSITY OF HAWAII  
OFFICE OF THE CHANCELLOR  
UNIVERSITY OF HAWAII AT MANOA  
AUXILIARY ENTERPRISES

ORGANIZATION CHART

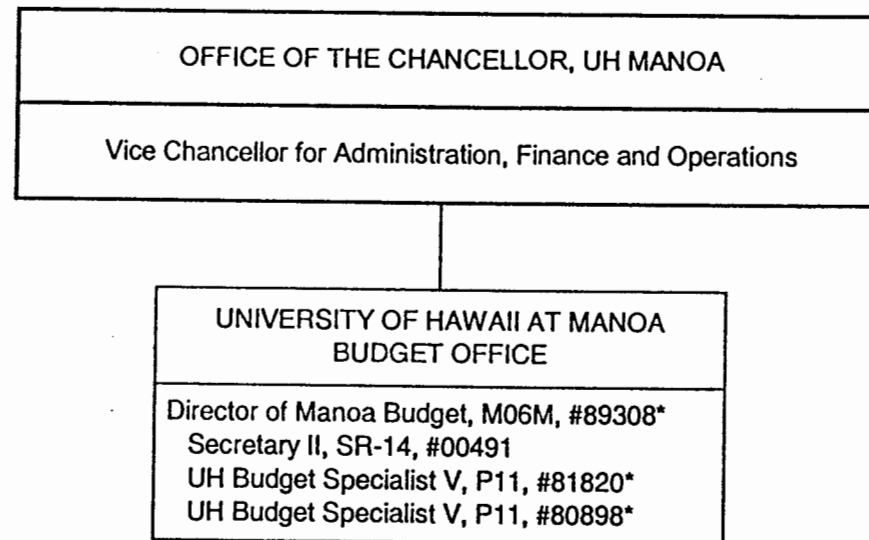


STATE OF HAWAII  
UNIVERSITY OF HAWAII  
OFFICE OF THE CHANCELLOR  
UNIVERSITY OF HAWAII AT MANOA  
FACILITIES, GROUNDS AND SAFETY  
ORGANIZATION CHART



STATE OF HAWAII  
UNIVERSITY OF HAWAII  
UNIVERSITY OF HAWAII AT MANOA  
OFFICE OF THE CHANCELLOR, UHM  
UNIVERSITY OF HAWAII AT MANOA BUDGET OFFICE

POSITION ORGANIZATION CHART II



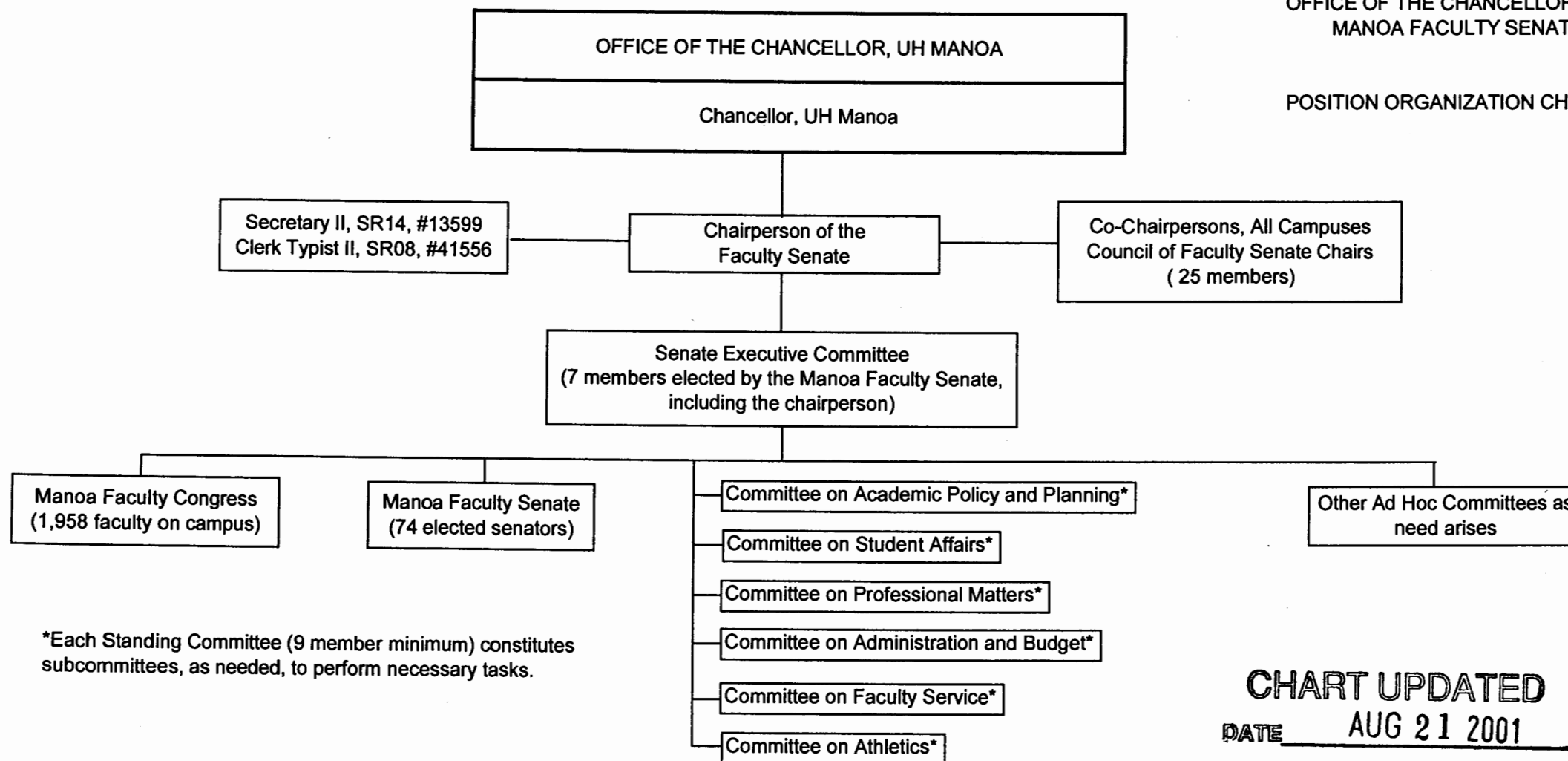
\* to be redescribed

General Funds 4.00 FTE

CHART UPDATED  
DATE AUG 21 2001

STATE OF HAWAII  
UNIVERSITY OF HAWAII  
UNIVERSITY OF HAWAII AT MANOA  
OFFICE OF THE CHANCELLOR, UHM  
MANOA FACULTY SENATE

POSITION ORGANIZATION CHART III



STATE OF HAWAII  
UNIVERSITY OF HAWAII  
UNIVERSITY OF HAWAII AT MANOA  
OFFICE OF THE CHANCELLOR, UHM  
OFFICE OF FACULTY DEVELOPMENT  
AND ACADEMIC SUPPORT

POSITION ORGANIZATION CHART IV

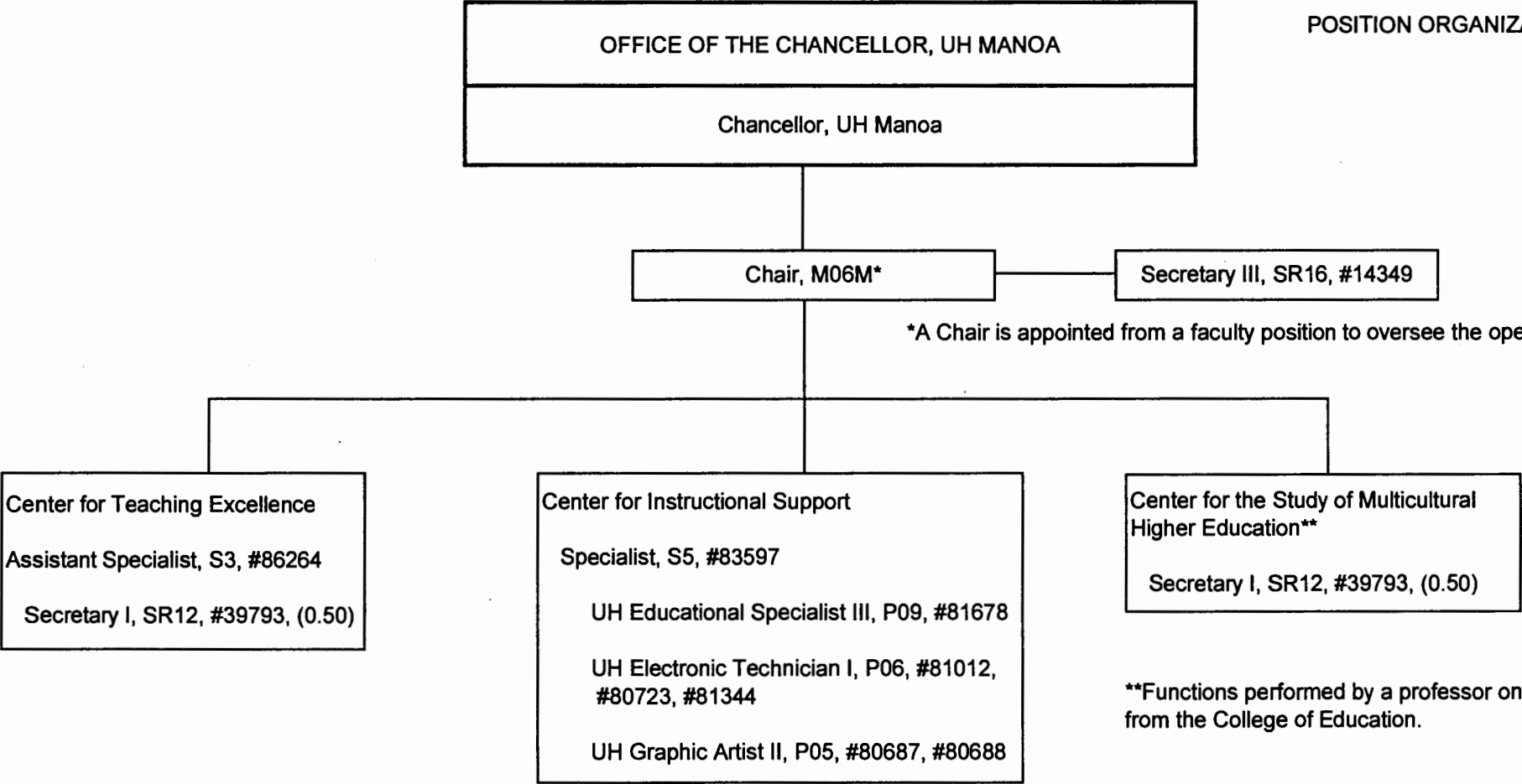
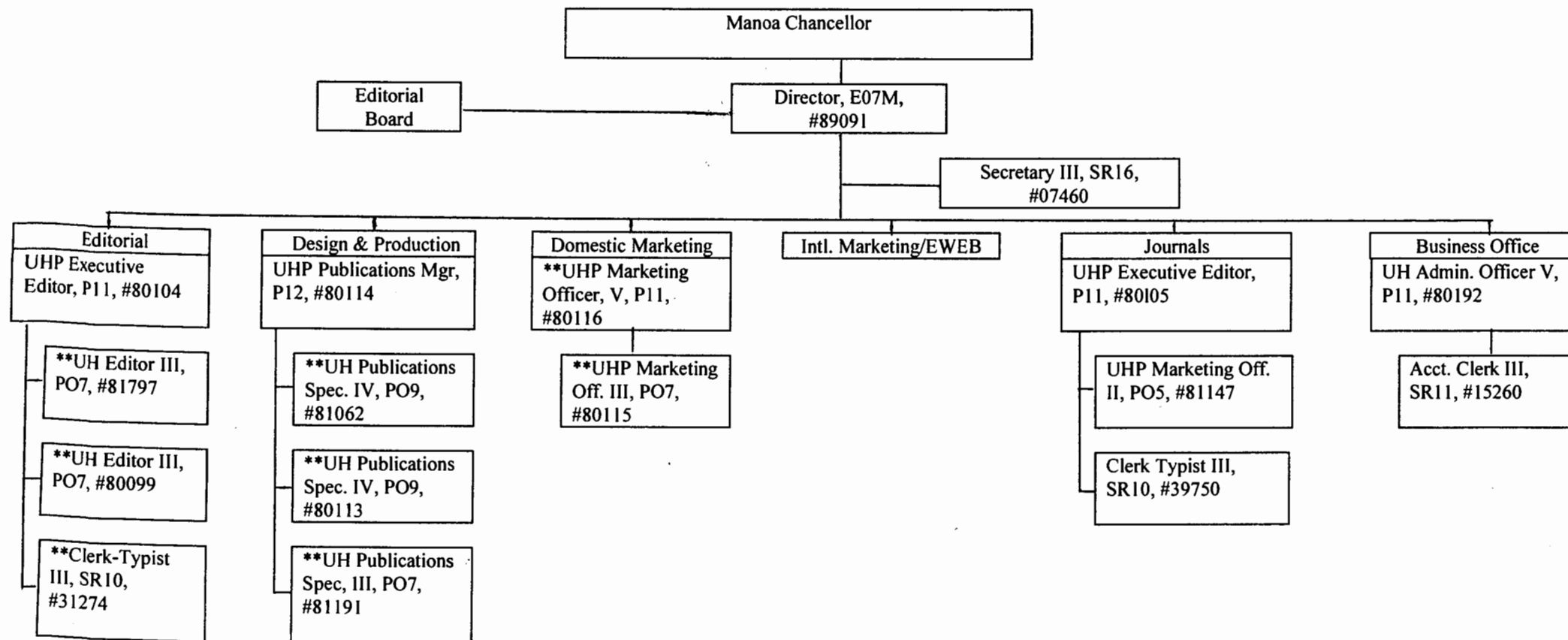


CHART UPDATED  
DATE AUG 21 2001

General Fund 10.00 FTE

STATE OF HAWAII  
UNIVERSITY OF HAWAII AT MANOA  
MANOA CHANCELLOR  
UNIVERSITY OF HAWAII PRESS  
Position Organization Chart  
CHART V

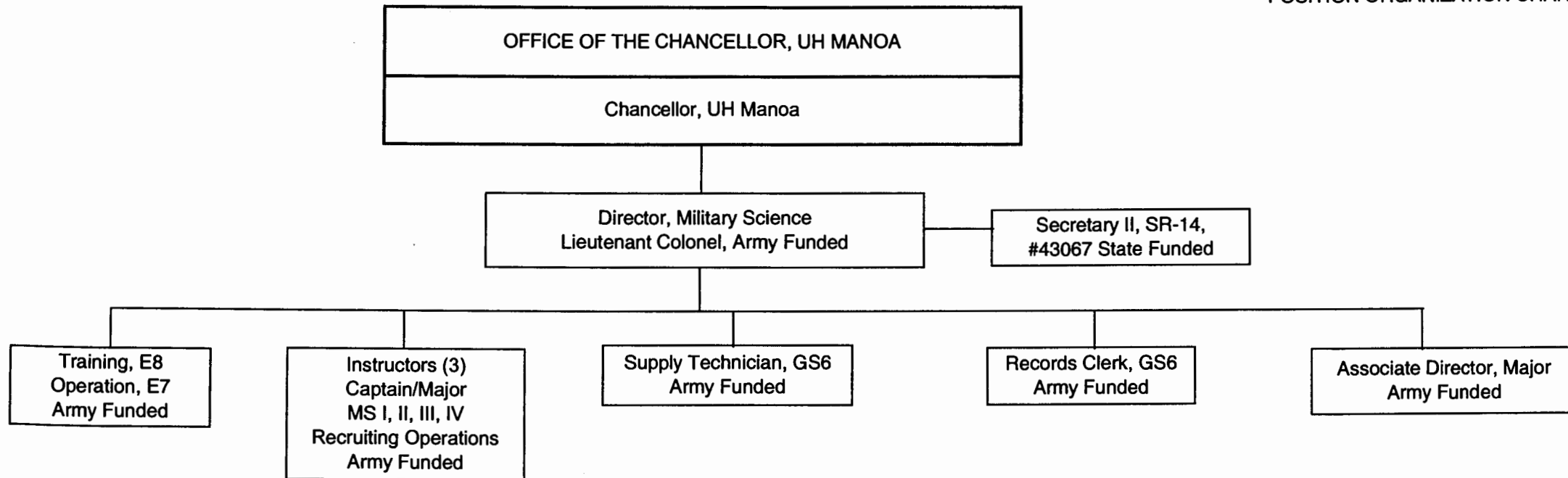


**CHART UPDATED**  
**AUG 21 2001**  
DATE \_\_\_\_\_

\*\*Revolving Funds 8.0 FTE  
General Fund 9.0 FTE

STATE OF HAWAII  
UNIVERSITY OF HAWAII  
UNIVERSITY OF HAWAII AT MANOA  
OFFICE OF THE CHANCELLOR, UHM  
MILITARY SCIENCE PROGRAM

POSITION ORGANIZATION CHART VI



5 Officers  
2 Noncommissioned Officers  
2 Department of Army Civilians  
1 State Employee  
10 Total Personnel

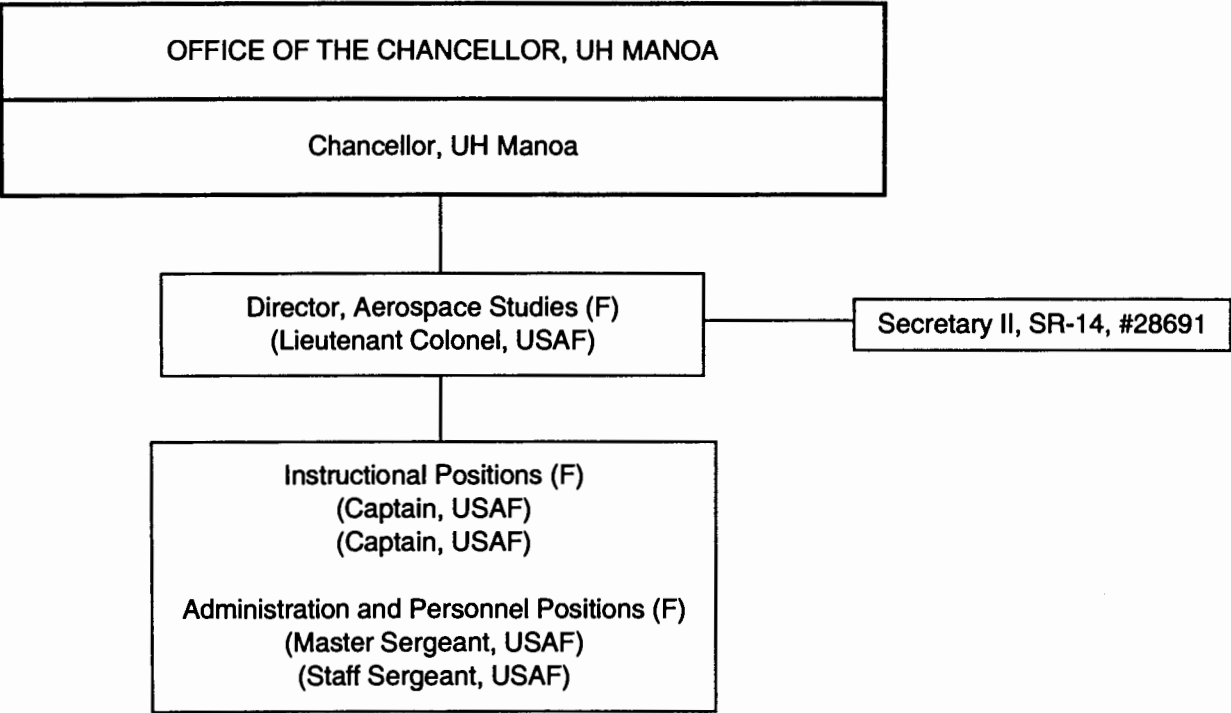
**CHART UPDATED**  
**AUG 21 2001**  
DATE \_\_\_\_\_

General Fund 1.00 FTE



STATE OF HAWAII  
UNIVERSITY OF HAWAII  
UNIVERSITY OF HAWAII AT MANOA  
OFFICE OF THE CHANCELLOR, UHM  
AEROSPACE STUDIES PROGRAM

POSITION ORGANIZATION CHART VII



(F) Personnel funded by the United States Air Force

CHART UPDATED  
DATE AUG 21 2001

General Fund 1.00 FTE