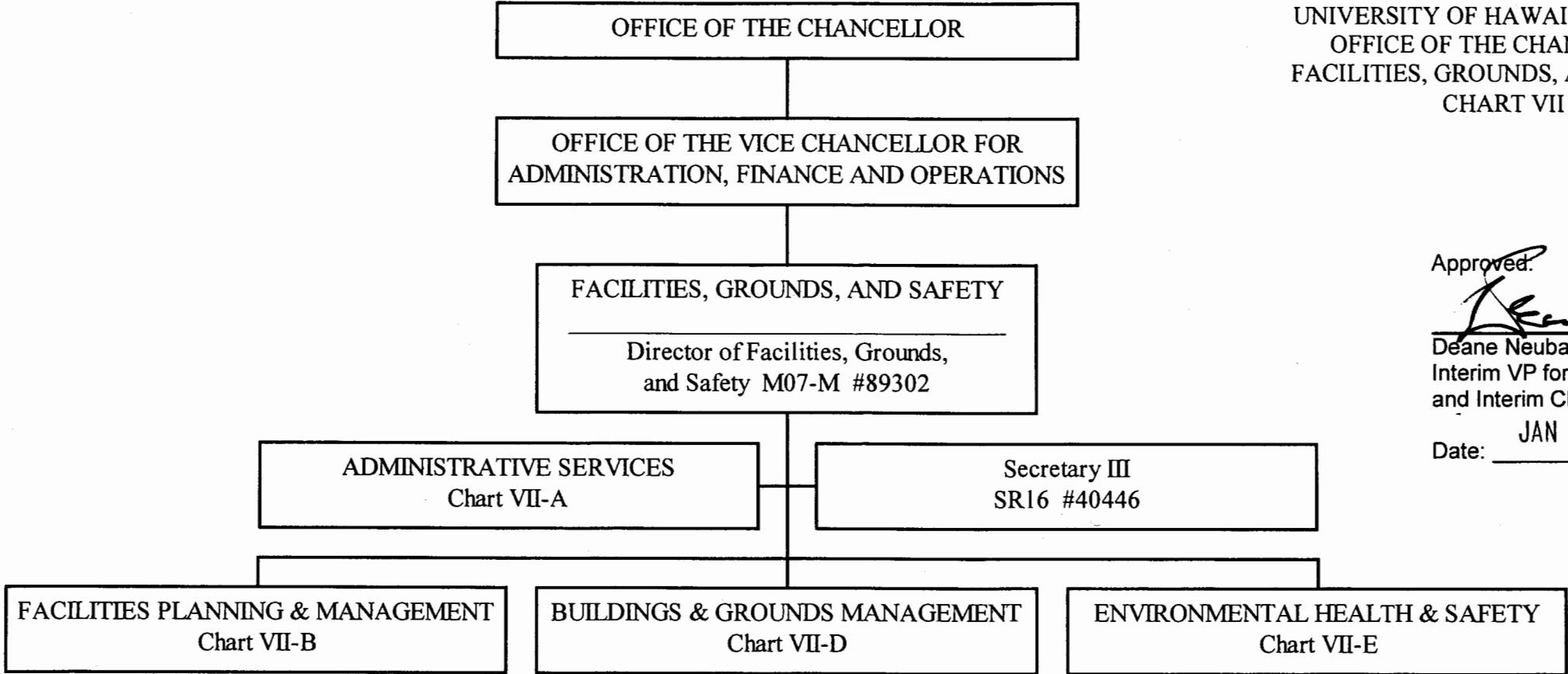
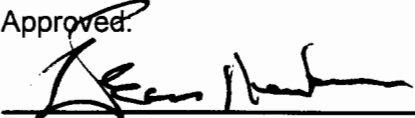
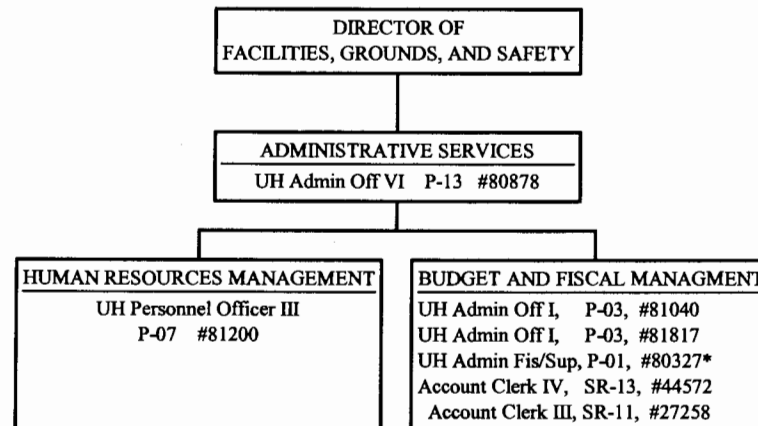


STATE OF HAWAII
UNIVERSITY OF HAWAII
UNIVERSITY OF HAWAII AT MANOA
OFFICE OF THE CHANCELLOR
FACILITIES, GROUNDS, AND SAFETY
CHART VII



Approved: 
Deane Neubauer
Interim VP for Academic Affairs, UH
and Interim Chancellor, UH Manoa
Date: JAN 22 2002

STATE OF HAWAII
UNIVERSITY OF HAWAII
UNIVERSITY OF HAWAII AT MANOA
OFFICE OF THE CHANCELLOR
FACILITIES, GROUNDS, AND SAFETY
CHART VII-A



*To be redescribed

CHART UPDATED
DATE AUG 21 2001

Position Count: 7.00
General Fund

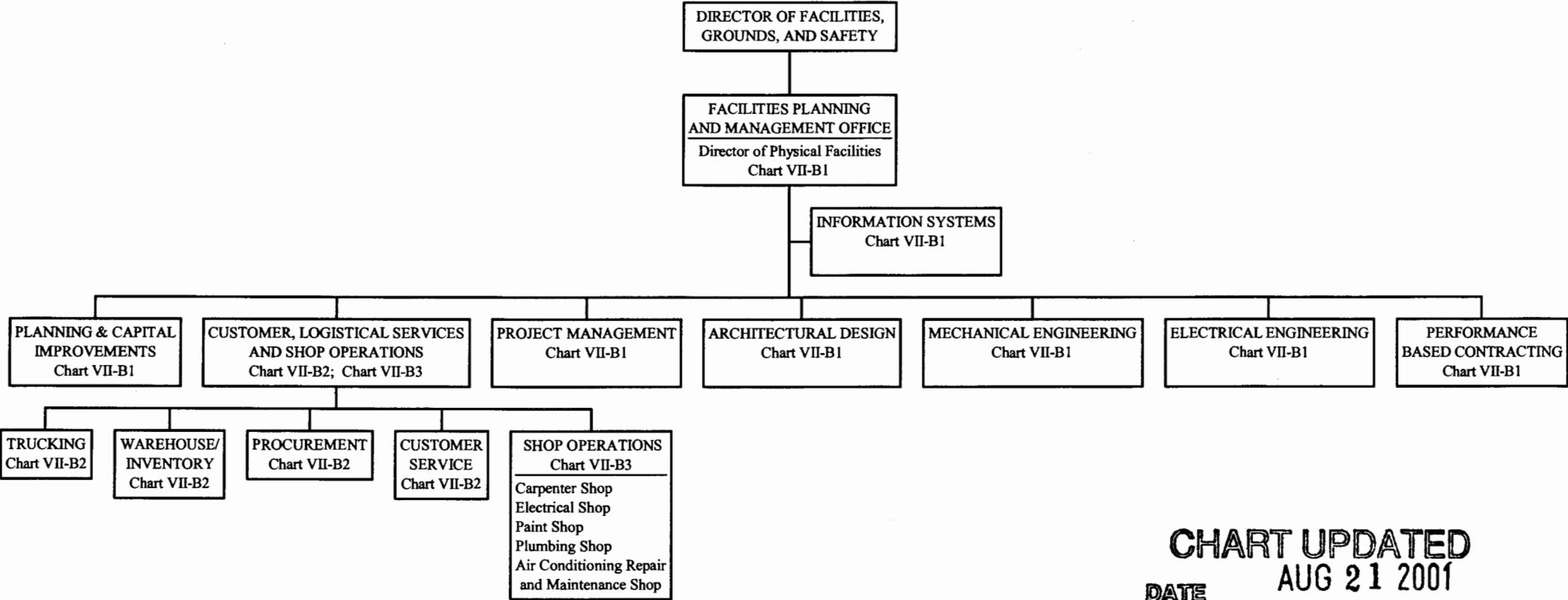


CHART UPDATED
AUG 21 2001
DATE _____

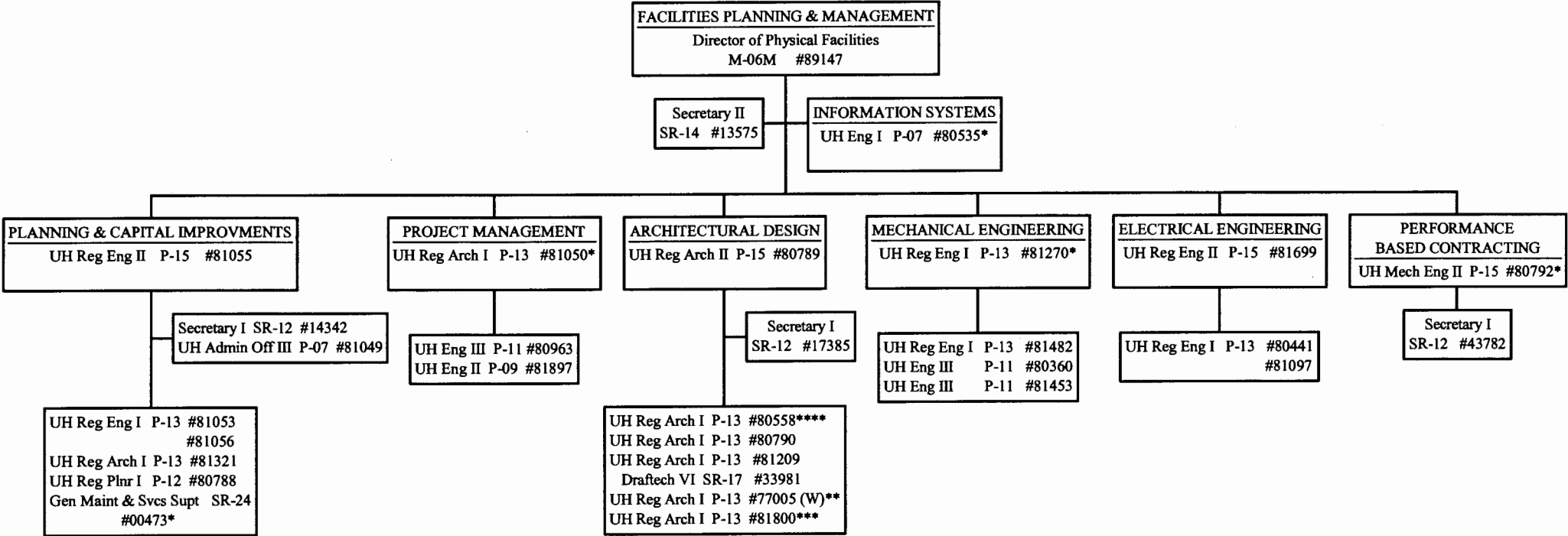


CHART UPDATED
DATE AUG 21 2001

*To be redescribed
****To be established

General Funds 29.00
(W) Revolving Funds 1.00 (**Not
included in our position count, position
belongs to and funded by Student Hsg.)

***1.00 Not included in our position count,
position belongs to and funded by EEO.

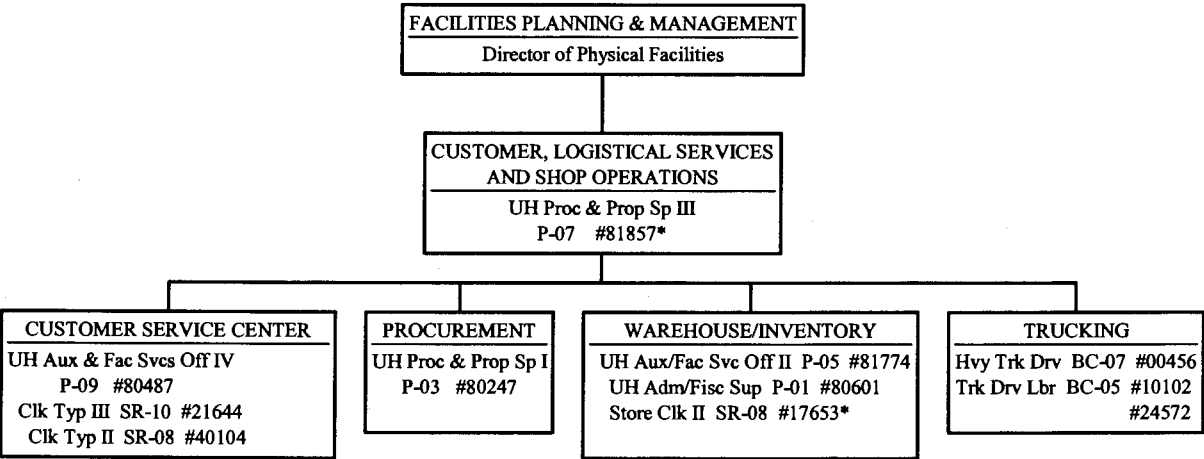
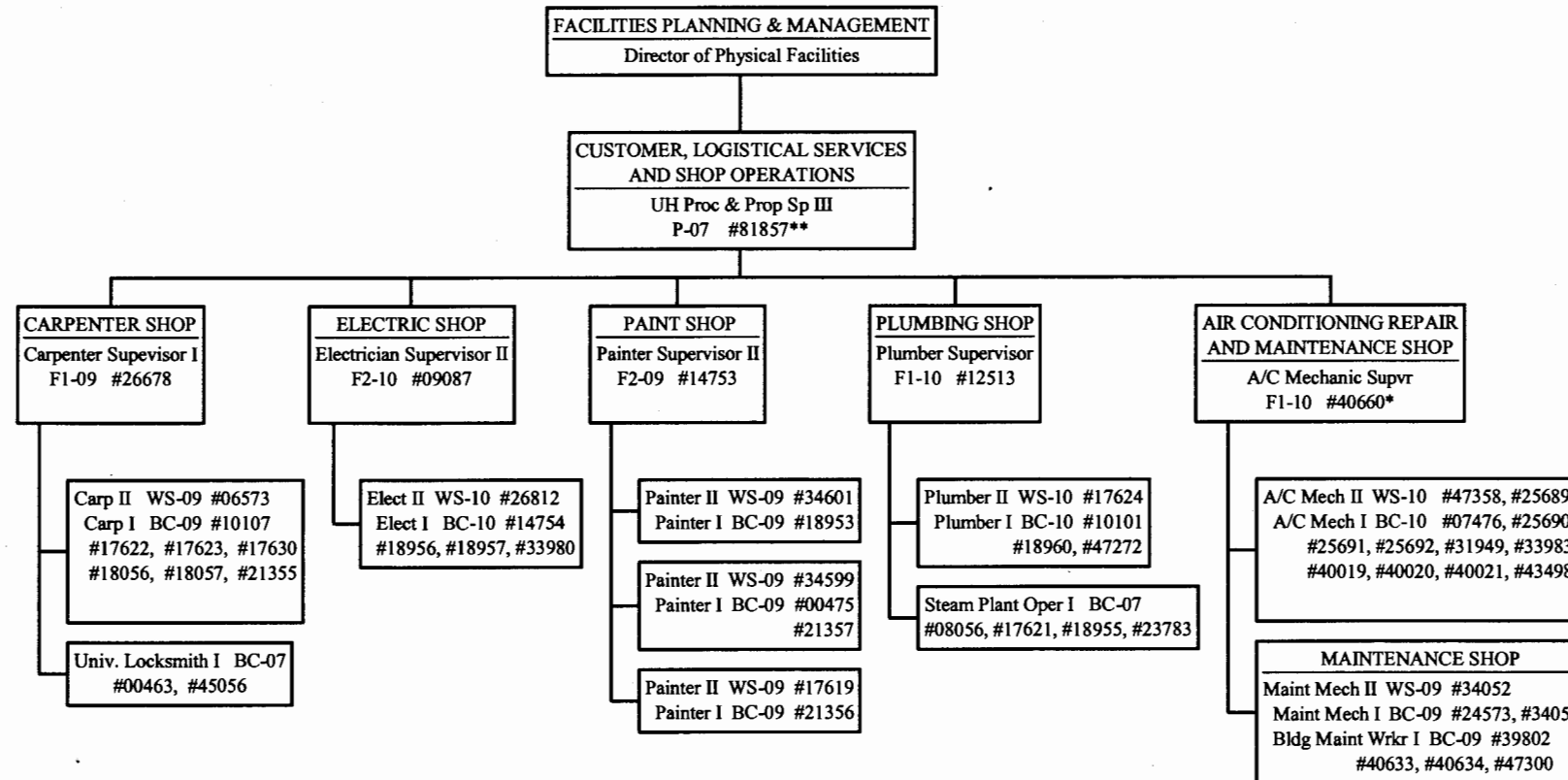


CHART UPDATED
DATE AUG 21 2001

*To be redescribed

STATE OF HAWAII
 UNIVERSITY OF HAWAII
 UNIVERSITY OF HAWAII AT MANOA
 OFFICE OF THE CHANCELLOR
 FACILITIES, GROUNDS, AND SAFETY
 FACILITIES PLANNING AND MGMT OFFICE
 CHART VII-B3



*To be redescribed

General Funds 54.00

**Position count not included on this page.

CHART UPDATED
 DATE AUG 21 2001

STATE OF HAWAII
 UNIVERSITY OF HAWAII
 UNIVERSITY OF HAWAII AT MANOA
 OFFICE OF THE CHANCELLOR
 FACILITIES, GROUNDS, AND SAFETY
 BUILDINGS & GROUNDS MANAGEMENT
 CHART VII-D

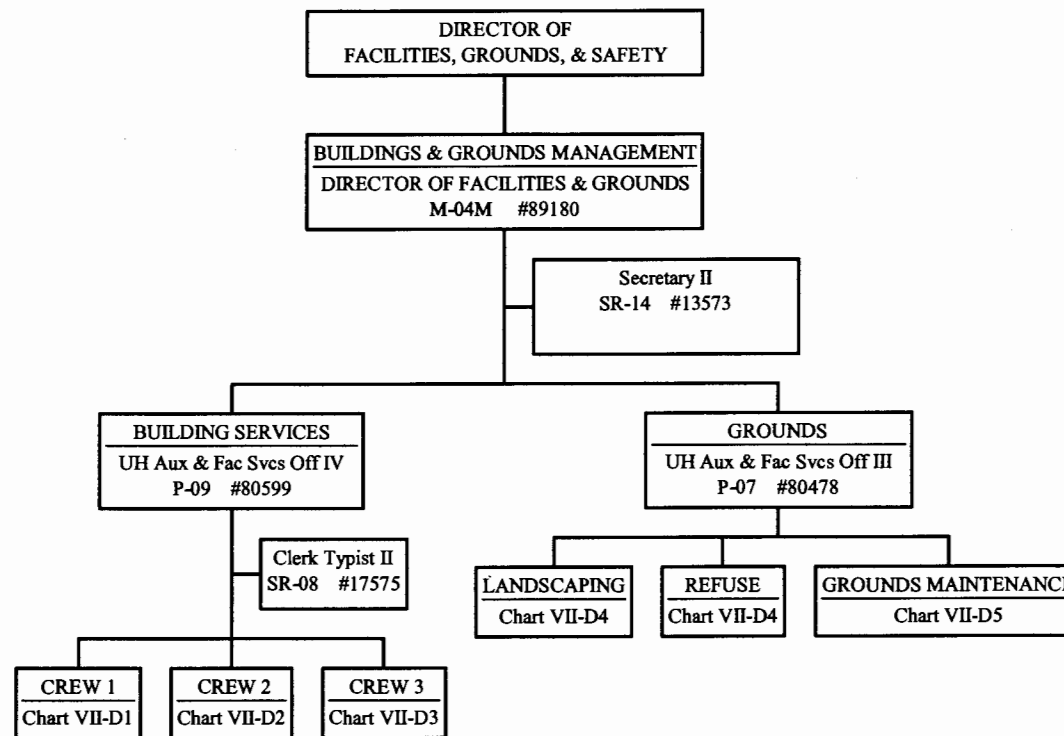


CHART UPDATED
 DATE AUG 21 2001

General Funds 5.00

CREW I

STATE OF HAWAII
UNIVERSITY OF HAWAII
UNIVERSITY OF HAWAII AT MANOA
OFFICE OF THE CHANCELLOR
FACILITIES, GROUNDS, AND SAFETY
BUILDINGS & GROUNDS MANAGEMENT
CHART VII-D1

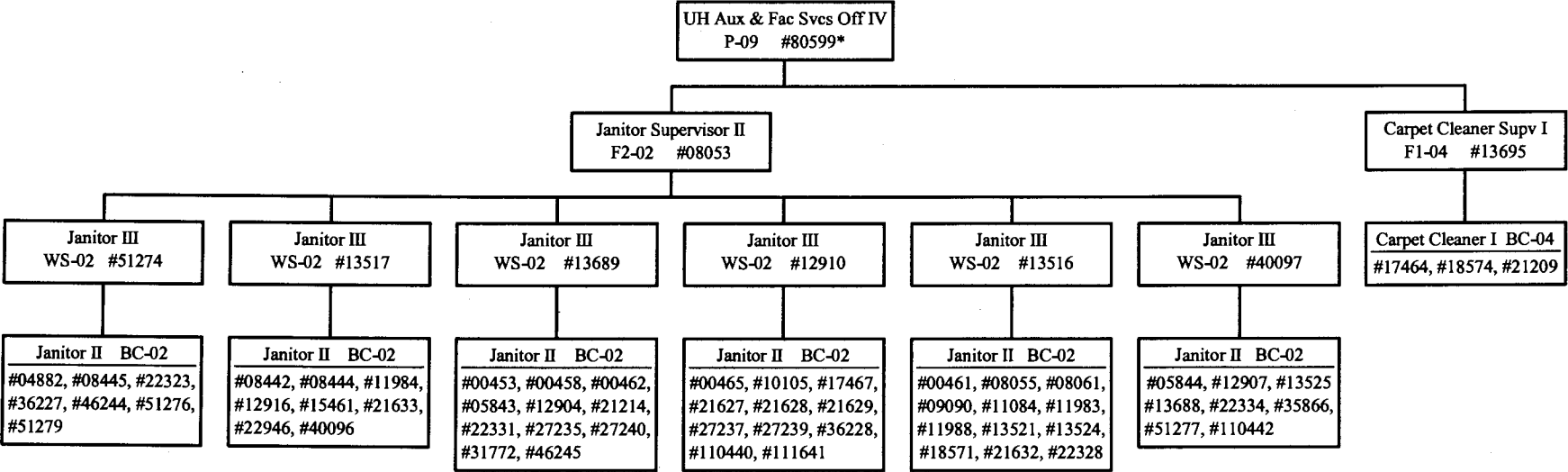


CHART UPDATED

DATE AUG 21 2001

General Funds 68.00
(*Position count not included on
this page)

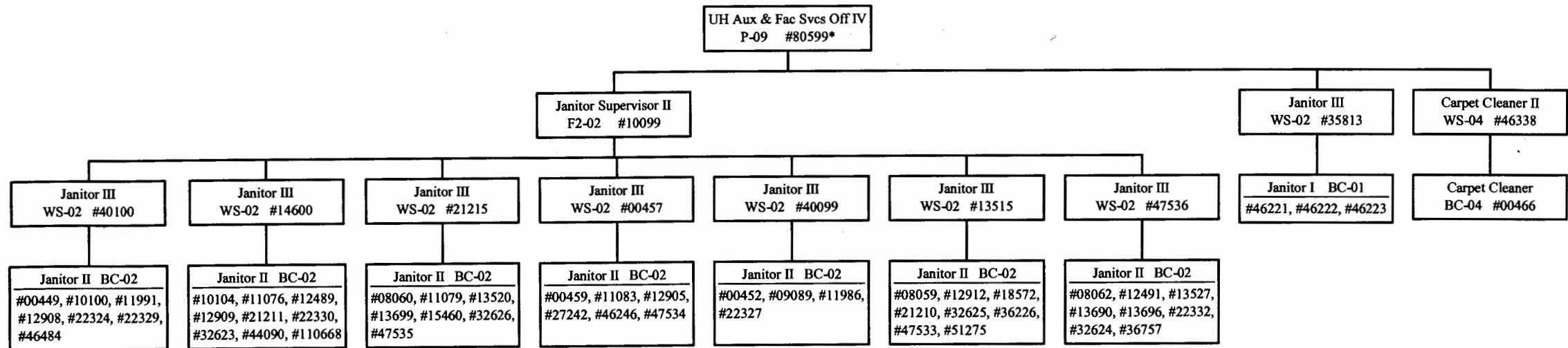


CHART UPDATED
AUG 21 2001
DATE _____

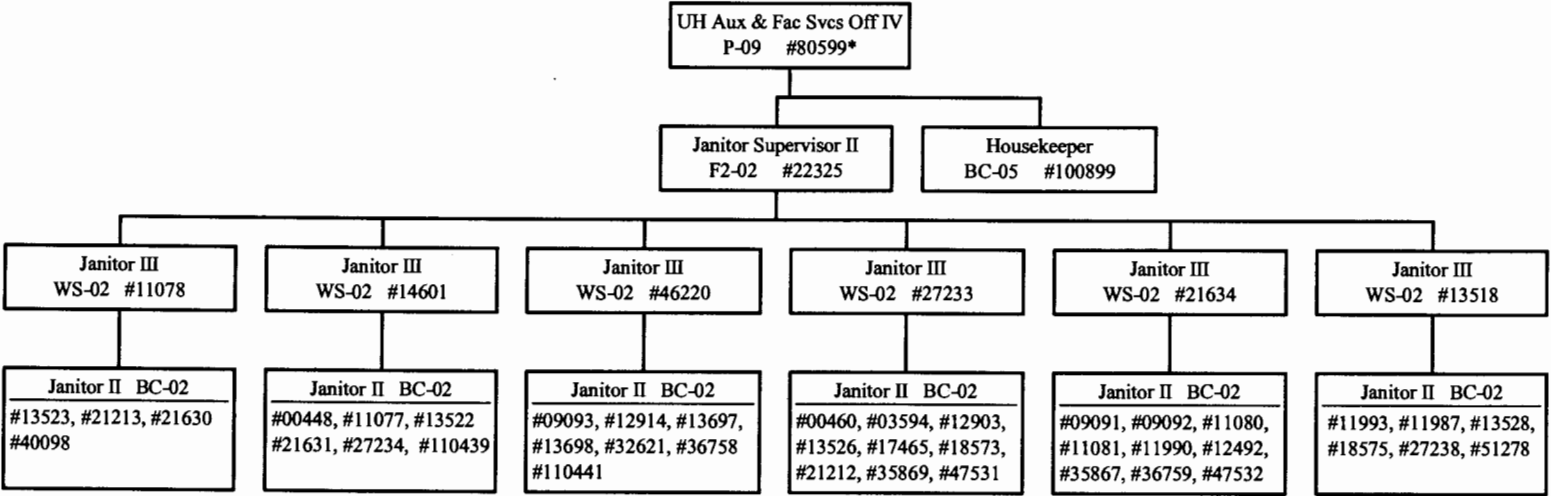


CHART UPDATED
AUG 21 2001

DATE _____

STATE OF HAWAII
UNIVERSITY OF HAWAII
UNIVERSITY OF HAWAII AT MANOA
OFFICE OF THE CHANCELLOR
FACILITIES, GROUNDS, & SAFETY
BUILDINGS & GROUNDS MANAGEMENT
CHART VII-D4

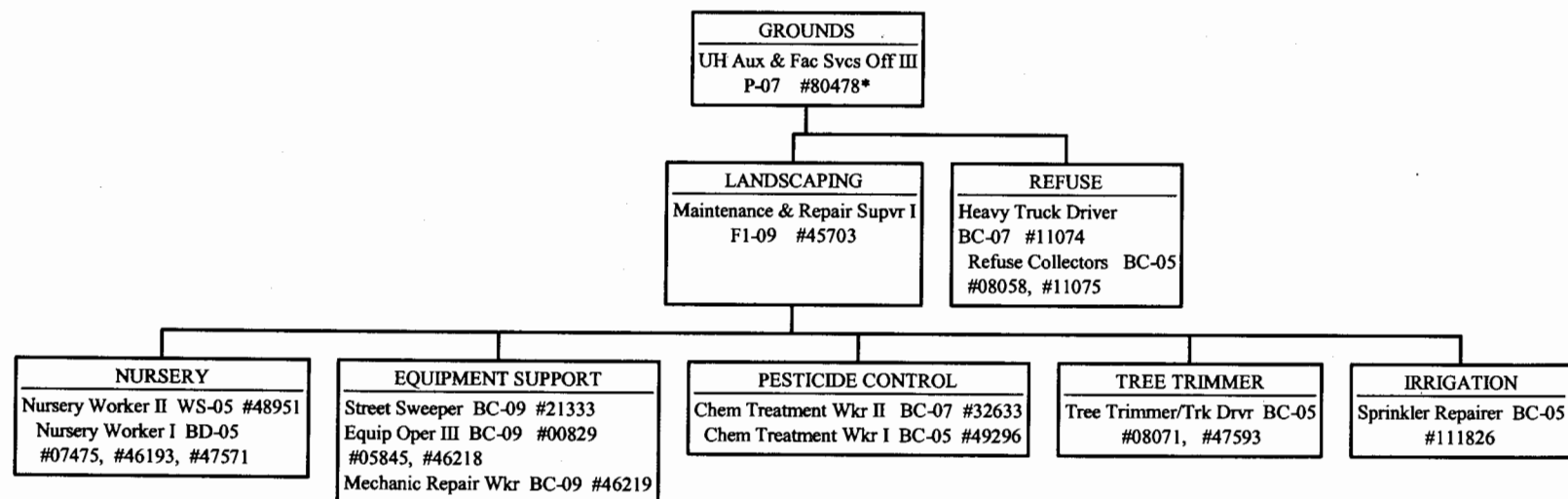


CHART UPDATED
DATE AUG 21 2001

General Funds 18.00
(* Position count not included on this page)

STATE OF HAWAII
 UNIVERSITY OF HAWAII
 UNIVERSITY OF HAWAII AT MANOA
 OFFICE OF THE CHANCELLOR
 FACILITIES, GROUNDS, & SAFETY
 BUILDINGS & GROUNDS MANAGEMENT
 CHART VII-D5

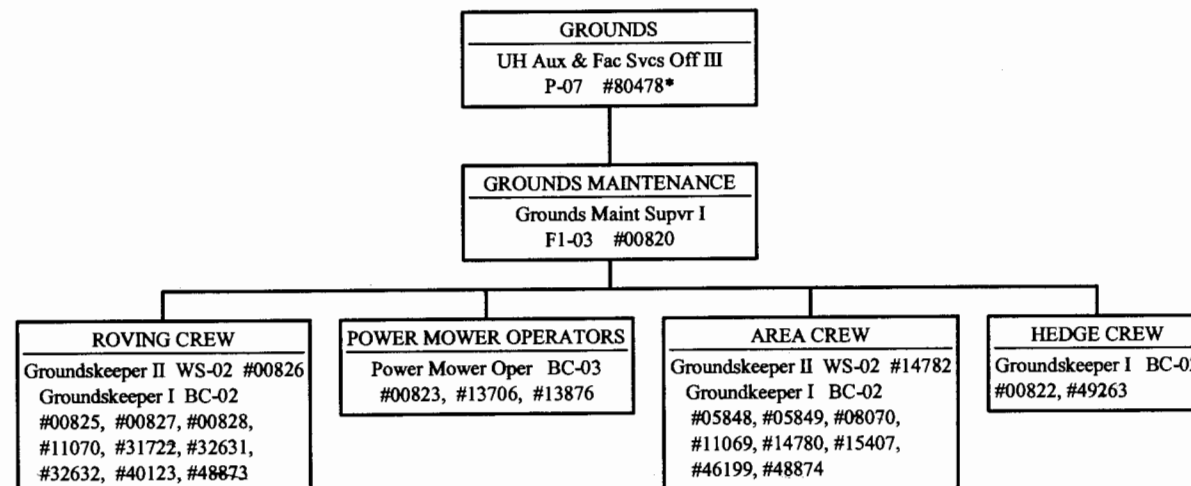


CHART UPDATED
 DATE AUG 21 2001

General Funds 25.00
 (*Position count not included on this page)

STATE OF HAWAII
UNIVERSITY OF HAWAII
UNIVERSITY OF HAWAII AT MANOA
OFFICE OF THE CHANCELLOR
FACILITIES, GROUNDS, & SAFETY
ENVIRONMENTAL HEALTH & SAFETY OFFICE
CHART VII-E

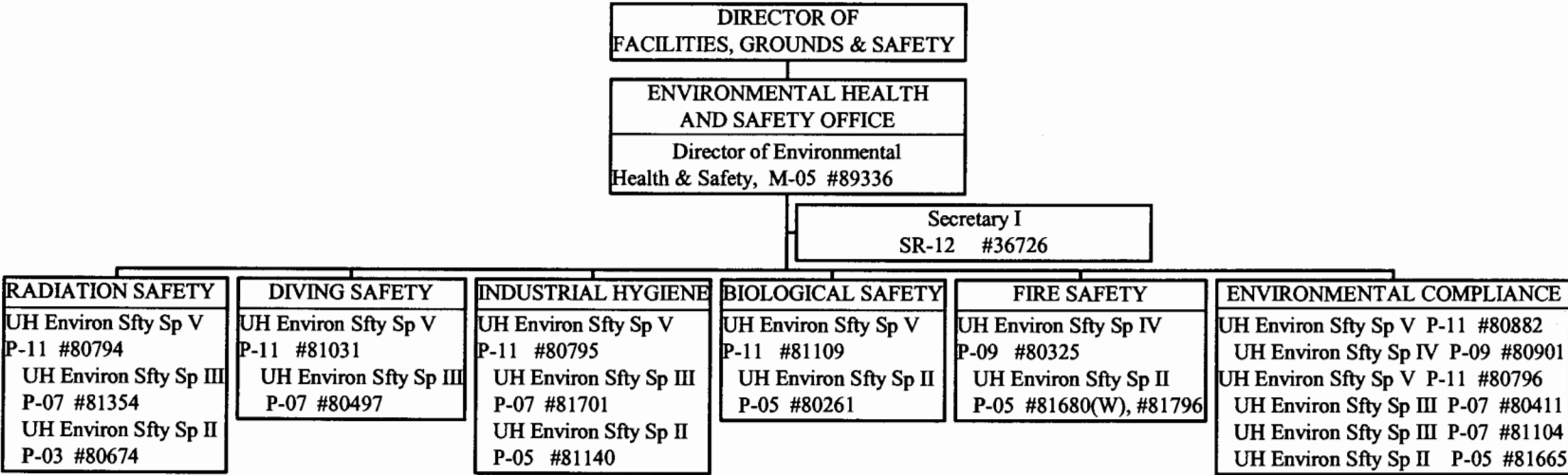
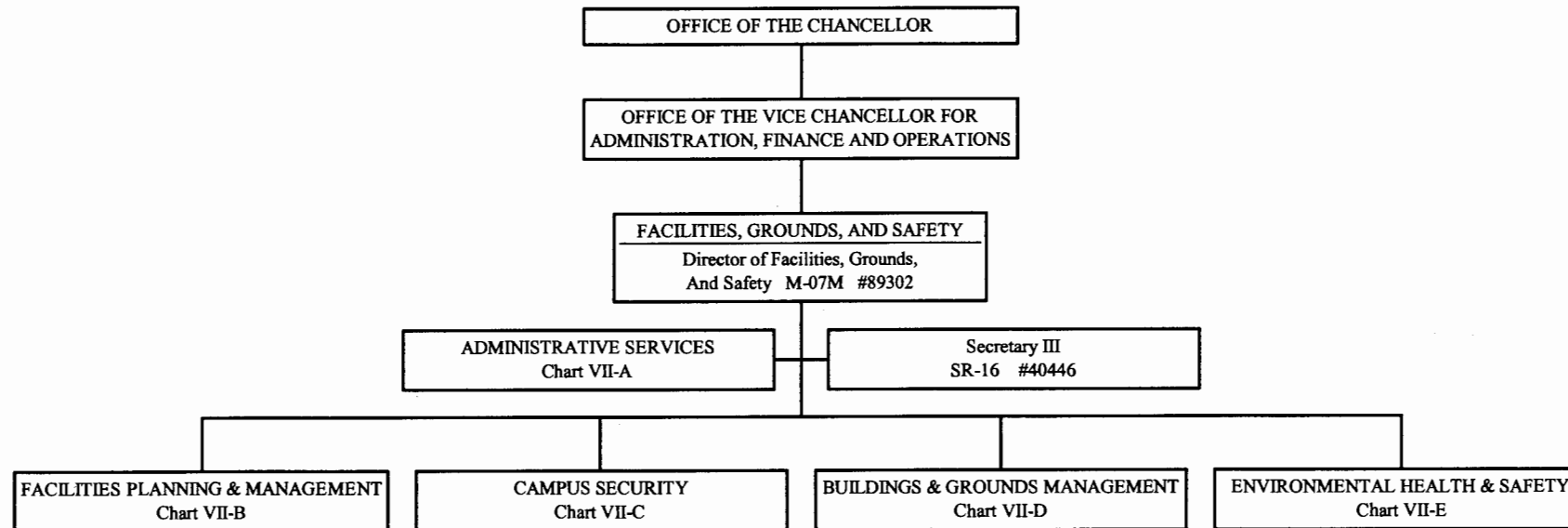


CHART UPDATED

DATE AUG 21 2001

General Funds 20.00
(W) Revolving Funds 1.00 (Not
included in our position count,
position belongs to Student Hsg)

STATE OF HAWAII
UNIVERSITY OF HAWAII
UNIVERSITY OF HAWAII AT MANOA
OFFICE OF THE CHANCELLOR
FACILITIES, GROUNDS, AND SAFETY
CHART VII



SUPERSEDED
Date JAN 22 2002

CHART UPDATED
AUG 21 2001
DATE _____

STATE OF HAWAII
UNIVERSITY OF HAWAII
UNIVERSITY OF HAWAII AT MANOA
OFFICE OF THE CHANCELLOR
FACILITIES, GROUNDS, & SAFETY
CAMPUS SECURITY
CHART VII-C

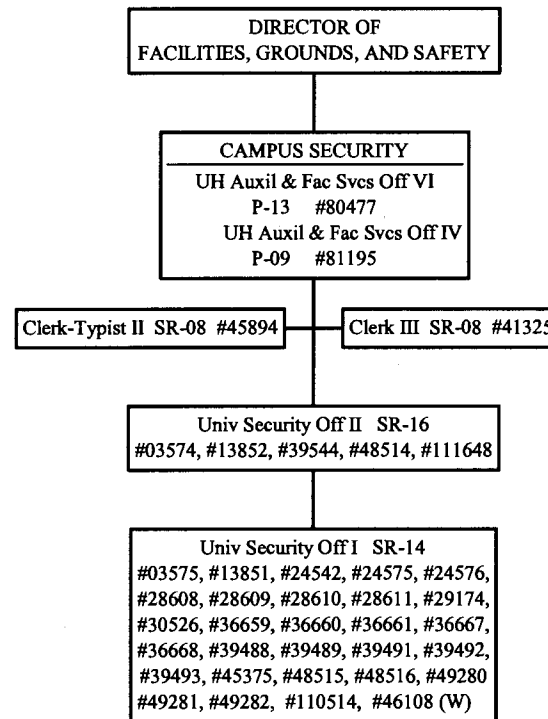


CHART UPDATED
DATE AUG 21 2001

SUPERSEDED
Date JAN 22 2002

General Funds 37.00
(W) Revolving Funds 1.00 (Not included in our
position count, this position belongs to Student Hsg)