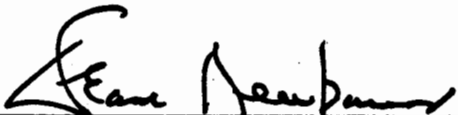


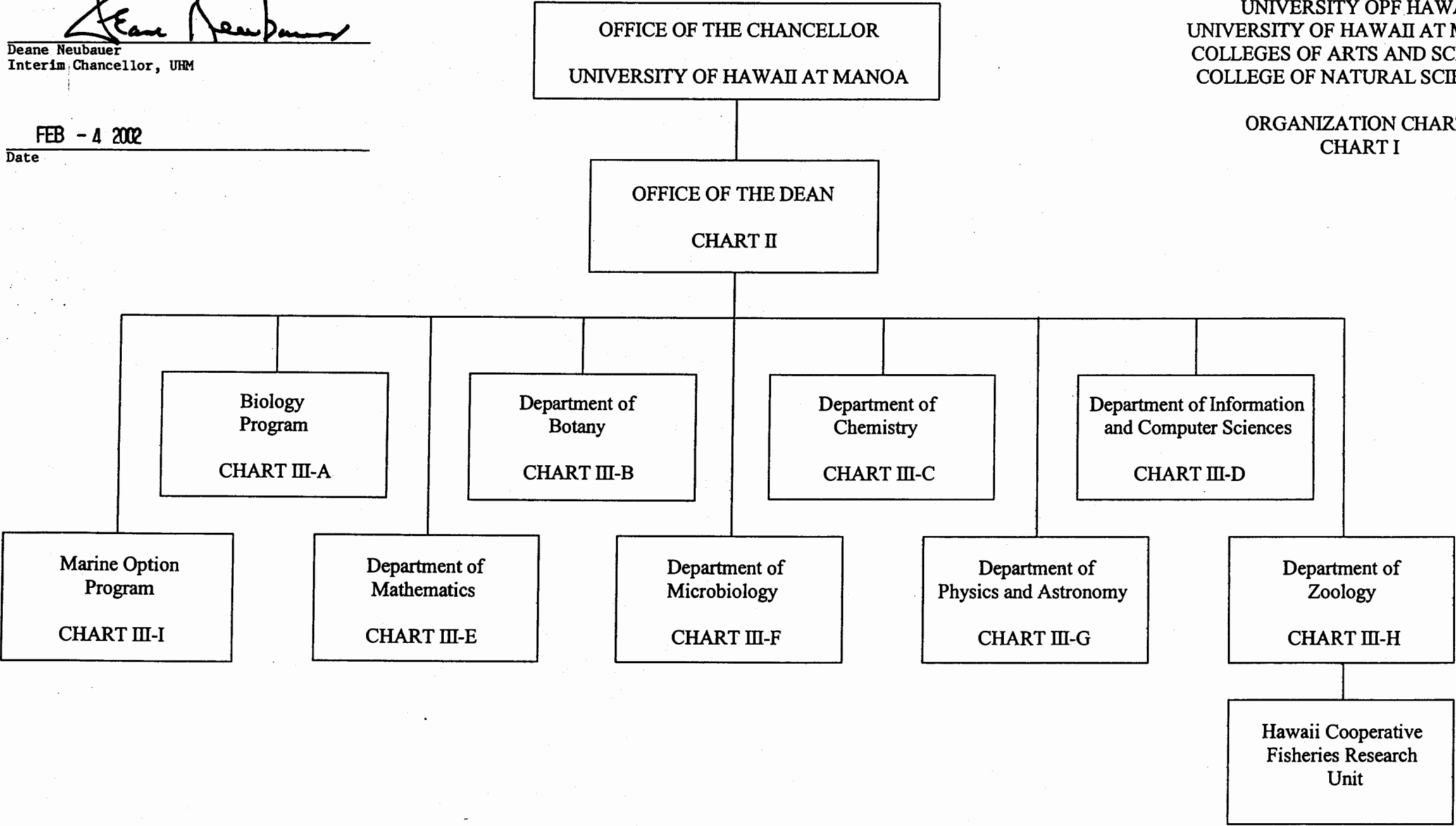
APPROVED:


Deane Neubauer
Interim Chancellor, UHM

FEB - 4 2002
Date

STATE OF HAWAII
UNIVERSITY OF HAWAII
UNIVERSITY OF HAWAII AT MANOA
COLLEGES OF ARTS AND SCIENCES
COLLEGE OF NATURAL SCIENCES

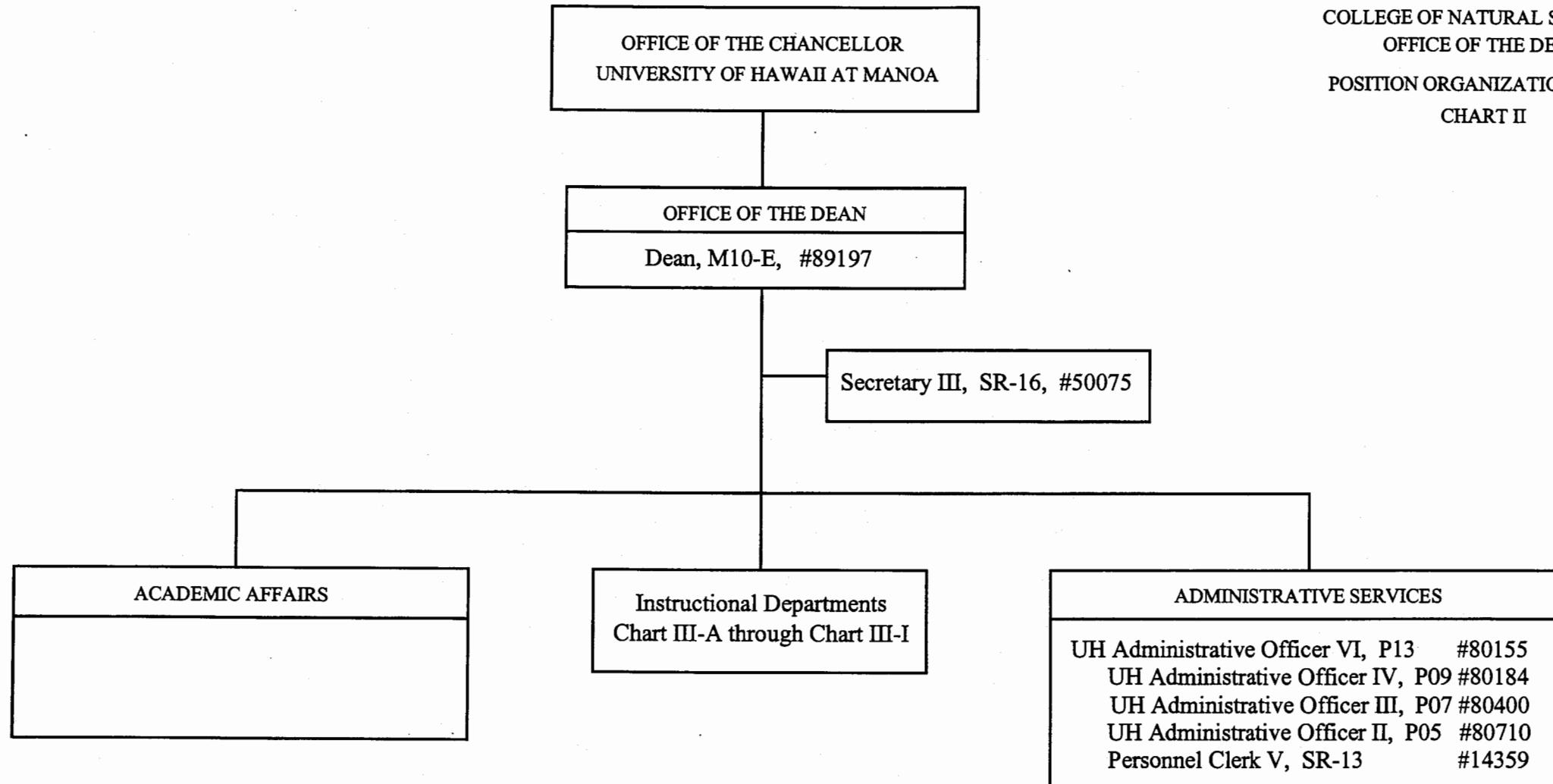
ORGANIZATION CHART
CHART I



STATE OF HAWAII

UNIVERSITY OF HAWAII
UNIVERSITY OF HAWAII AT MANOA
COLLEGES OF ARTS AND SCIENCES
COLLEGE OF NATURAL SCIENCES
OFFICE OF THE DEAN

POSITION ORGANIZATION CHART
CHART II



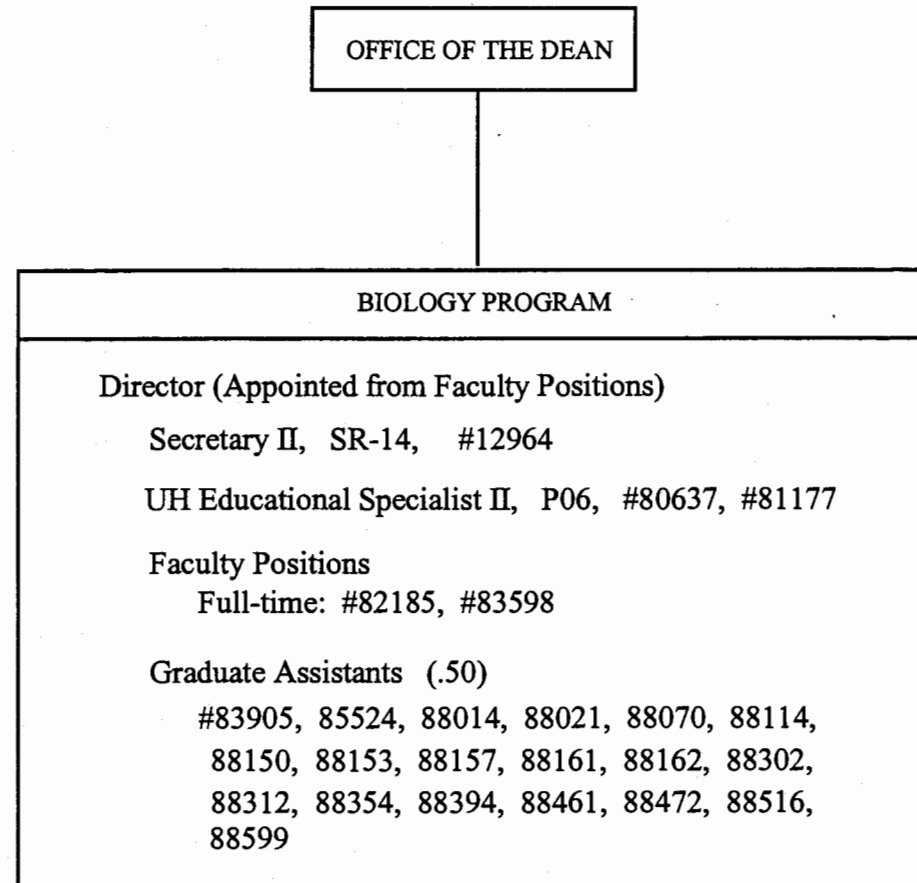
General Funds 7.00

CHART UPDATED
DATE JUL 20 2001

STATE OF HAWAII

UNIVERSITY OF HAWAII
UNIVERSITY OF HAWAII AT MANOA
COLLEGES OF ARTS AND SCIENCES
COLLEGE OF NATURAL SCIENCES

BIOLOGY PROGRAM
POSITION ORGANIZATION CHART
CHART III-A

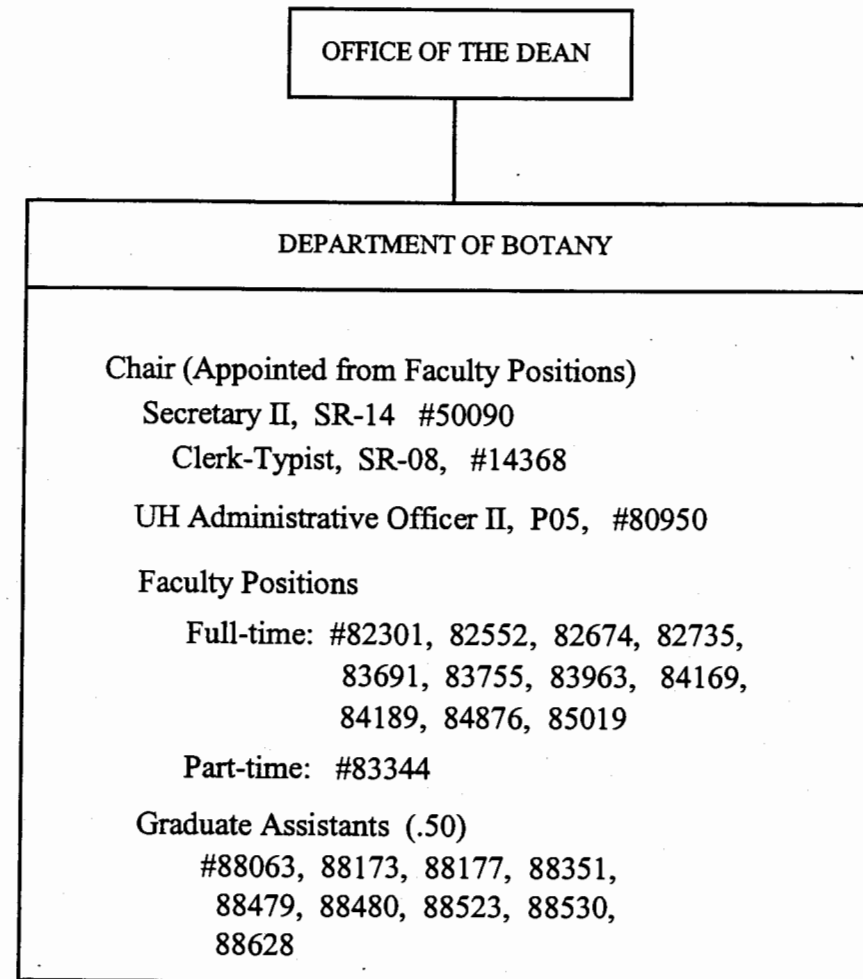


General Funds 14.50

CHART UPDATED
DATE JUL 20 2001

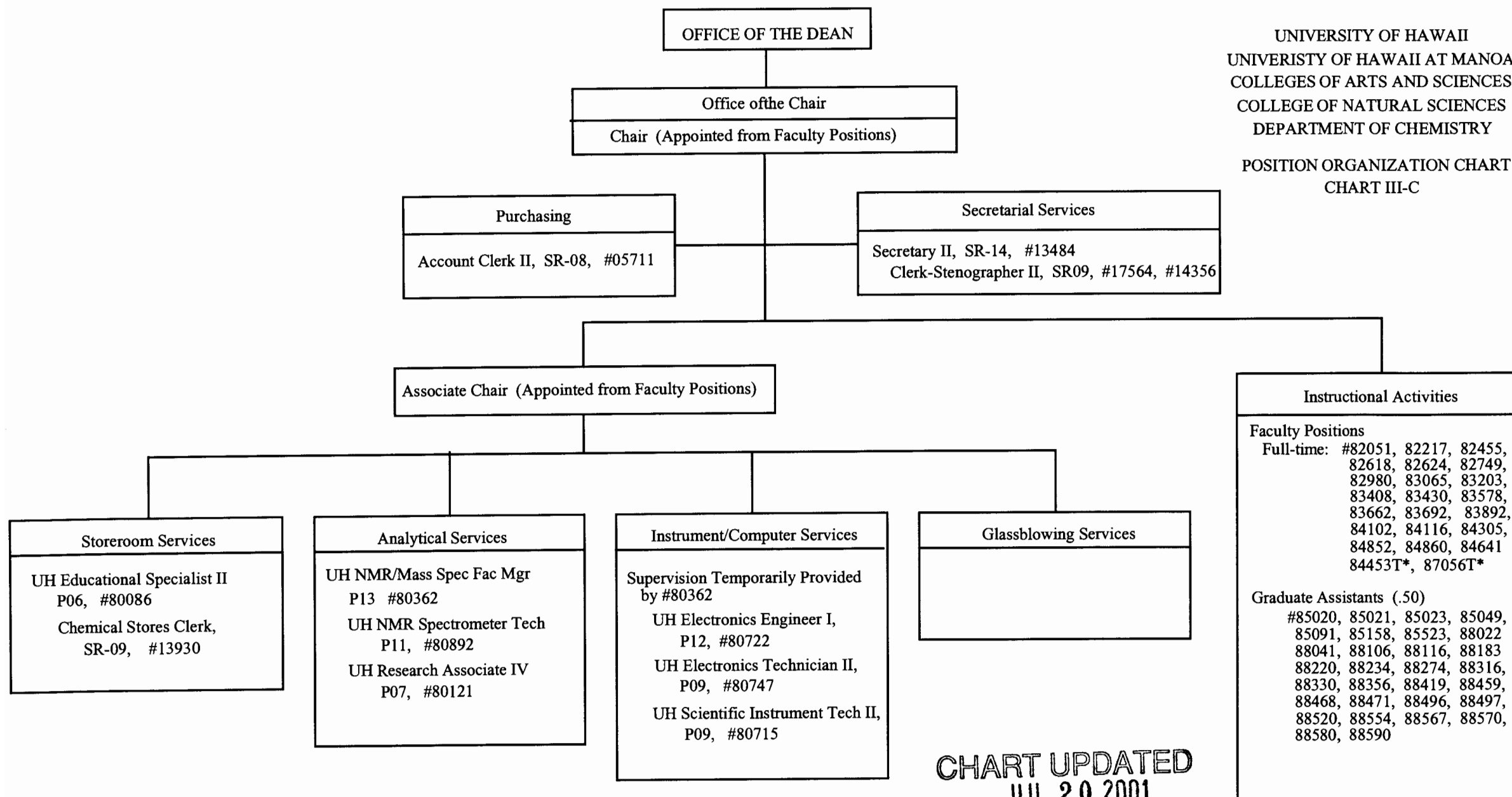
STATE OF HAWAII

UNIVERSITY OF HAWAII
UNIVERSITY OF HAWAII AT MANOA
COLLEGES OF ARTS AND SCIENCES
COLLEGE OF NATURAL SCIENCES
DEPARTMENT OF BOTANY
POSITION ORGANIZATION CHART
CHART III-B



General Funds 19.00

CHART UPDATED
DATE JUL 20 2001

UNIVERSITY OF HAWAII
UNIVERSITY OF HAWAII AT MANOA
COLLEGES OF ARTS AND SCIENCES
COLLEGE OF NATURAL SCIENCES
DEPARTMENT OF CHEMISTRYPOSITION ORGANIZATION CHART
CHART III-CCHART UPDATED
JUL 20 2001
DATE

*Appropriated Temporary Positions

General Funds 50.00

STATE OF HAWAII

UNIVERSITY OF HAWAII
UNIVERSITY OF HAWAII AT MANOA
COLLEGES OF ARTS AND SCIENCES
COLLEGE OF NATURAL SCIENCES
DEPARTMENT OF INFORMATION
AND COMPUTER SCIENCES
POSITION ORGANIZATION CHART
CHART III-D

OFFICE OF THE DEAN

DEPARTMENT OF INFORMATION AND COMPUTER SCIENCES

Chair (Appointed from Faculty Positions)

Secretary II, SR-14, #18055

Clerk Typist III, SR-10, #26814

UH IT Specialist, PBC, #81194

UH IT Specialist, PBB #81447

UH Student Services Specialist II, P06, #81985

Faculty Positions

Full-time: #82120, 82287, 82446, 82626, 82737,
82794, 83074, 83083, 83338, 83381,
83393, 83602, 83857, 83916, 84029,
84270, 84282, 84427, 85633, 87503,
87504, 88680

Part-time: #85651T* (0.50)

Graduate Assistants (.50)

#85650, 86422, 86464, 86465, 86466, 86467, 87556,
87557, 87558, 88563, 83828T*, 83834T*, 84341T*,
86064T*

*Appropriated Temporary Positions

General Funds 34.50

CHART UPDATED
DATE JUL 20 2001

STATE OF HAWAII

UNIVERSITY OF HAWAII
UNIVERSITY OF HAWAII AT MANOA
COLLEGES OF ARTS AND SCIENCES
COLLEGE OF NATURAL SCIENCES
DEPARTMENT OF MATHEMATICS

POSITION ORGANIZATION CHART
CHART III-E

OFFICE OF THE DEAN

DEPARTMENT OF MATHEMATICS

Chair (Appointed from Faculty Positions)

Secretary II, SR-14, #12467

Clerk Stenographer III, SR-11, #14365, 21976

Faculty Positions

Full-time: #82036, 82177, 82202, 82254, 82411,
82458, 82473, 82668, 82738, 82942,
82943, 82993, 83200, 83285, 83332,
83426, 83478, 83709, 83781, 83984,
84037, 84092, 84183, 84472, 84503,
84508, 84513, 84515, 84550, 84558,
84645, 84857, 88215

Graduate Assistants (.50)

#85024, 88013, 88073, 88111, 88142,
88148, 88253, 88426, 88611, 88672,
83855T*

General Funds 41.50

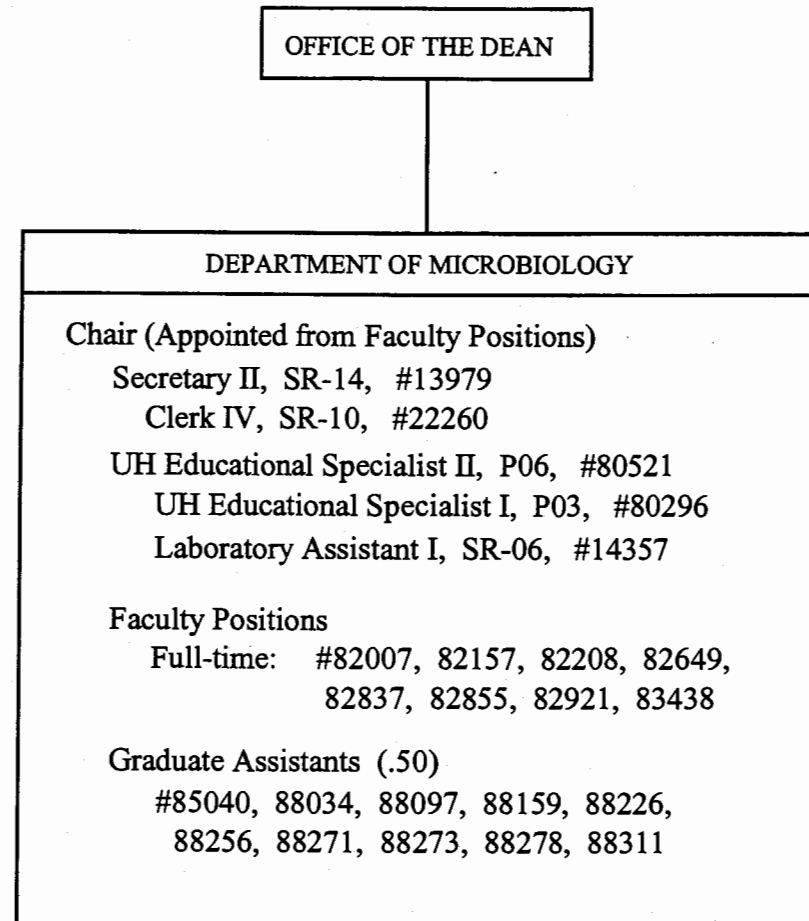
*Appropriated Temporary Positions

CHART UPDATED

DATE JUL 20 2001

STATE OF HAWAII

UNIVERSITY OF HAWAII
UNIVERSITY OF HAWAII AT MANOA
COLLEGES OF ARTS AND SCIENCES
COLLEGE OF NATURAL SCIENCES
DEPARTMENT OF MICROBIOLOGY
POSITION ORGANIZATION CHART
CHART III-F



General Funds 18.00

CHART UPDATED
DATE JUL 20 2001

STATE OF HAWAII

UNIVERSITY OF HAWAII
UNIVERSITY OF HAWAII AT MANOA
COLLEGES OF ARTS AND SCIENCES
COLLEGE OF NATURAL SCIENCES

DEPARTMENT OF PHYSICS AND ASTRONOMY

POSITION ORGANIZATION CHART
CHART III-G

OFFICE OF THE DEAN

DEPARTMENT OF PHYSICS AND ASTRONOMY

Chair (Appointed from Faculty Positions)

Secretary II, SR-14, #12918

Clerk-Stenographer II, SR-09, #14355

UH Scientific Instrument Technician II, P09, #80706

UH Scientific Instrument Technician I, P07, #80703

Faculty Positions

Full-time: #82206, 82314, 82468, 82587, 82633,
82770, 82875, 82893, 83534, 83547,
83790, 83861, 83910, 83915, 83926,
84235, 84240, 84398, 84494, 84587,
84675, 84897, 88615, 84773

Graduate Assistants (.50)

#85506, 88055, 88057, 88176, 88198, 88270, 88309,
88385, 88389, 88441, 88478, 88524, 88593, 88650,
83844T*, 83849T*, 84184T*

CHART UPDATED
DATE JUL 20 2001

General Funds 36.50

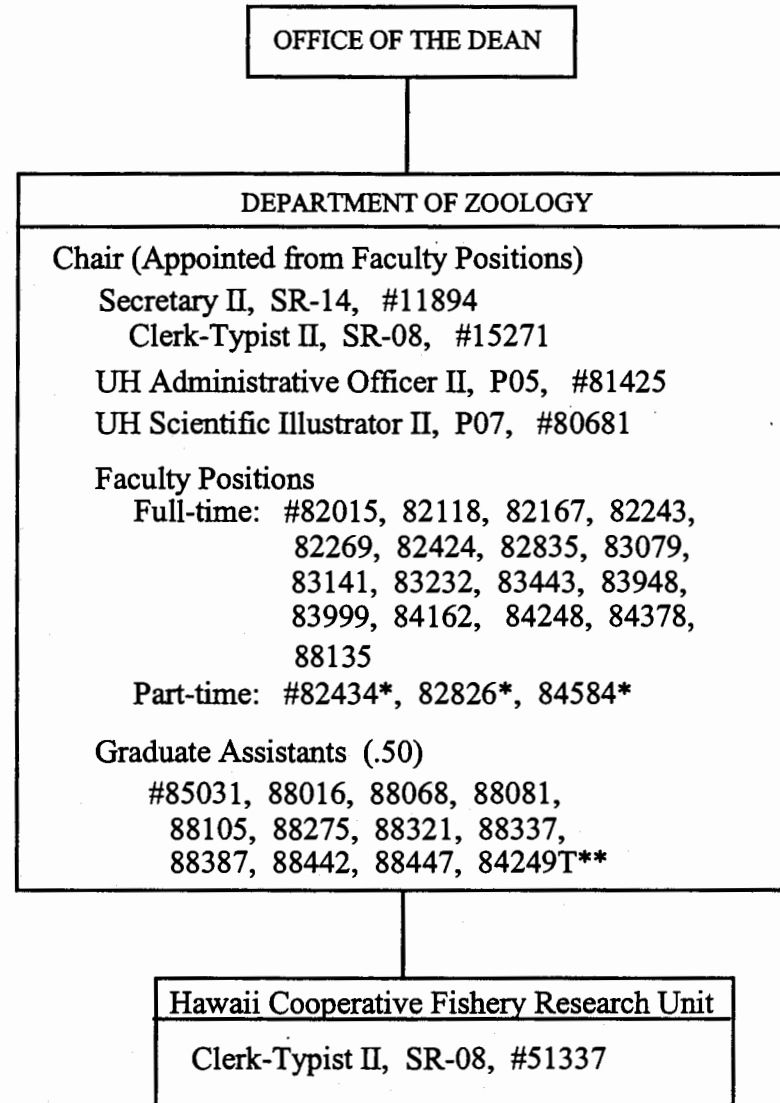
*Appropriated Temporary Positions

STATE OF HAWAII

UNIVERSITY OF HAWAII
UNIVERSITY OF HAWAII AT MANOA
COLLEGES OF ARTS AND SCIENCES
COLLEGE OF NATURAL SCIENCES

DEPARTMENT OF ZOOLOGY

POSITION ORGANIZATION CHART
CHART III-H



*Joint Appointments
**Appropriated Temporary Positions

CHART UPDATED
DATE JUL 20 2001

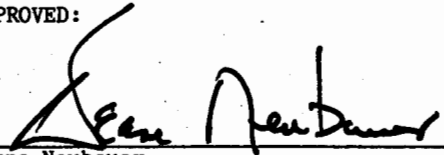
General Funds 29.50

STATE OF HAWAII
UNIVERSITY OF HAWAII
UNIVERSITY OF HAWAII AT MANOA
COLLEGES OF ARTS AND SCIENCES
COLLEGE OF NATURAL SCIENCES

MARINE OPTION PROGRAM
POSITION ORGANIZATION CHART

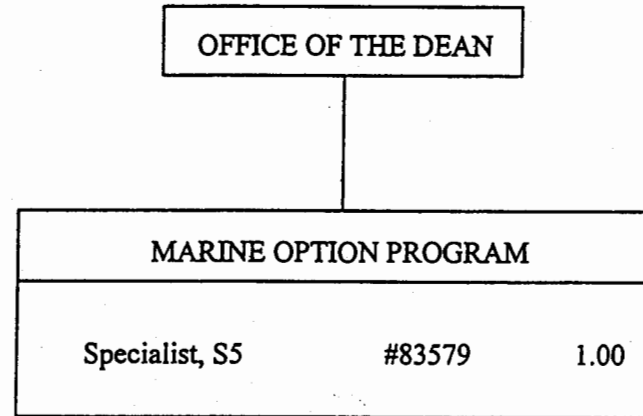
CHART III-I

APPROVED:


Deane Neubauer
Interim Chancellor, UHM

FEB - 4 2002

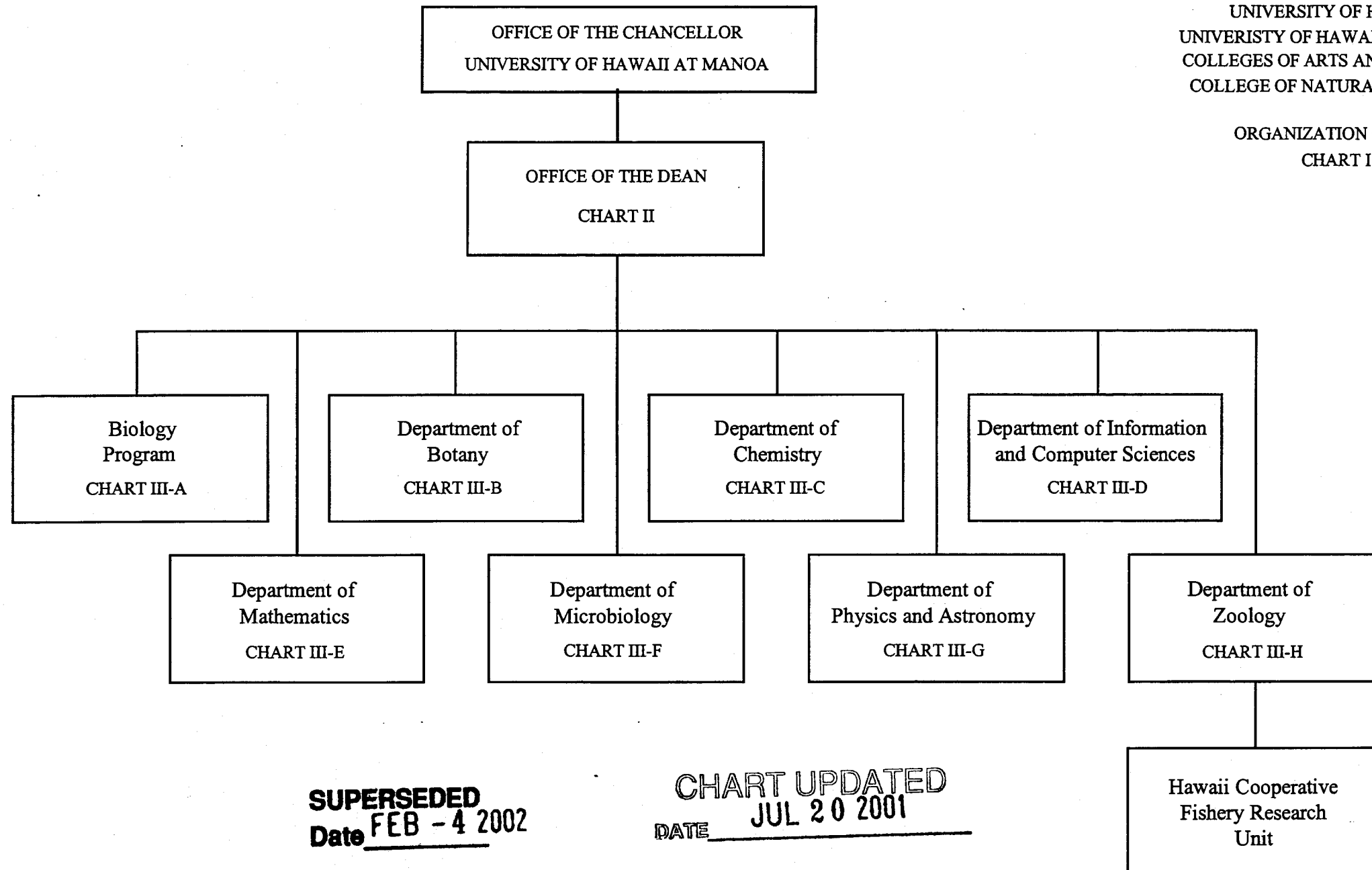
Date



STATE OF HAWAII

UNIVERSITY OF HAWAII
UNIVERSITY OF HAWAII AT MANOA
COLLEGE OF ARTS AND SCIENCES
COLLEGE OF NATURAL SCIENCES

ORGANIZATION CHART
CHART I



SUPERSEDED
Date FEB - 4 2002

CHART UPDATED
DATE JUL 20 2001