

APPROVED:

Deane Neubauer
Interim Chancellor, UHM

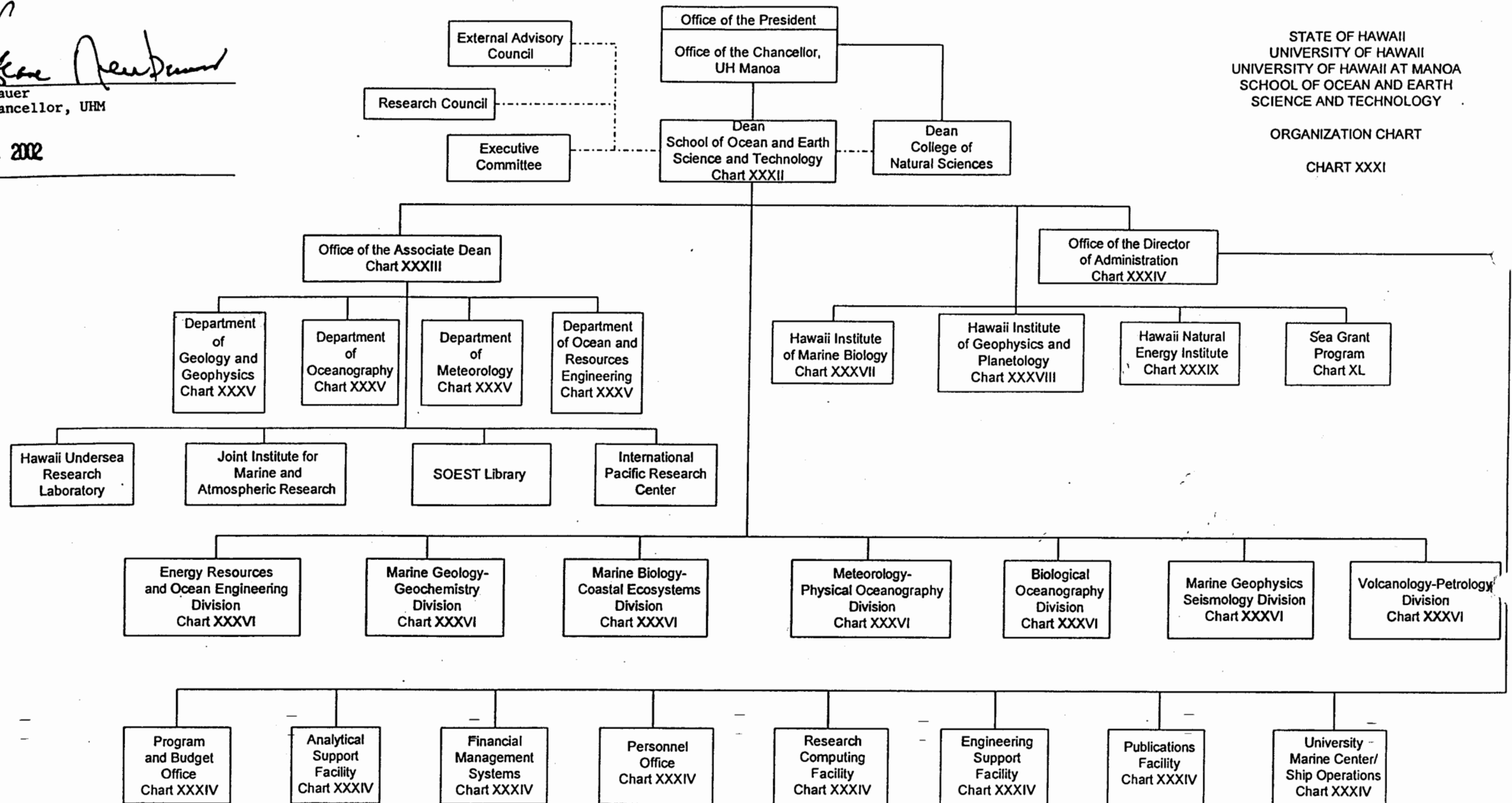
FEB - 4 2002

Date

STATE OF HAWAII
UNIVERSITY OF HAWAII
UNIVERSITY OF HAWAII AT MANOA
SCHOOL OF OCEAN AND EARTH
SCIENCE AND TECHNOLOGY

ORGANIZATION CHART

CHART XXXI



APPROVED:


C. Barry Raleigh, Dean 07-01-2001

STATE OF HAWAII
UNIVERSITY OF HAWAII
UNIVERSITY OF HAWAII AT MANOA
SCHOOL OF OCEAN AND EARTH
SCIENCE AND TECHNOLOGY

OFFICE OF THE DEAN
POSITION ORGANIZATION CHART

CHART XXXII

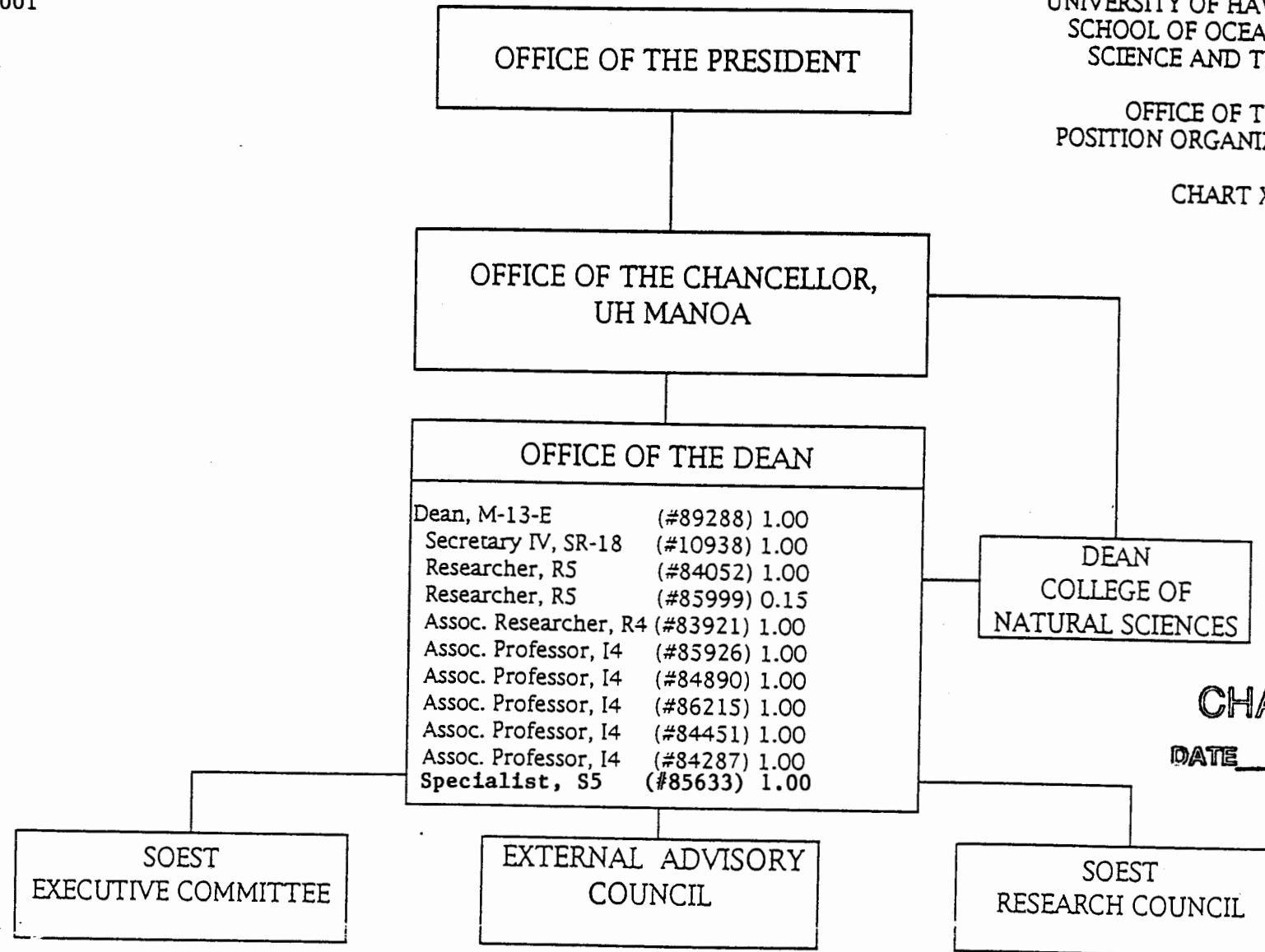
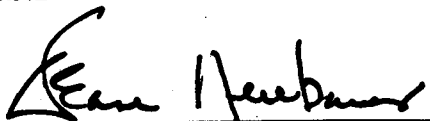


CHART UPDATED
DATE JUL 20 2001

APPROVED:


Deane Neubauer
Interim Chancellor, UHM

FEB - 4 2002

Date

OFFICE OF THE CHANCELLOR,
UH MANOA

DEAN
SCHOOL OF OCEAN AND EARTH
SCIENCE AND TECHNOLOGY

OFFICE OF THE ASSOCIATE DEAN

Assoc. Dean, M09	(#89267)	1.00
Secretary III, SR-16	(#42541)	1.00
Specialist, S5	(#82423)	1.00
Professor, I5	(#84902)	1.00
Researcher, R5	(#82715)	1.00

DEPARTMENT
OF GEOLOGY
AND
GEOPHYSICS
CHART XXXV

DEPARTMENT
OF
OCEANOGRAPHY
CHART XXXV

DEPARTMENT
OF
METEOROLOGY
CHART XXXV

DEPARTMENT
OF OCEAN AND
RESOURCES
ENGINEERING
CHART XXXV

HAWAII UNDERSEA
RESEARCH
LABORATORY

JOINT INSTITUTE
FOR
MARINE AND
ATMOSPHERIC
RESEARCH

SOEST LIBRARY

GRADUATE
OCEAN POLICY
CERTIFICATE PROGRAM

INTERNATIONAL PACIFIC
RESEARCH CENTER

STATE OF HAWAII
UNIVERSITY OF HAWAII
UNIVERSITY OF HAWAII AT MANOA
SCHOOL OF OCEAN AND EARTH
SCIENCE AND TECHNOLOGY

OFFICE OF THE ASSOCIATE DEAN
FOR ACADEMIC AFFAIRS
POSITION ORGANIZATION CHART

CHART XXXIII

APPROVED:

C. Barry Raleigh
C. Barry Raleigh, Dean 7/01/2001

DEAN
SCHOOL OF OCEAN AND EARTH
SCIENCE AND TECHNOLOGY

STATE OF HAWAII
UNIVERSITY OF HAWAII
UNIVERSITY OF HAWAII AT MANOA
SCHOOL OF OCEAN AND EARTH
SCIENCE AND TECHNOLOGY

OFFICE OF THE DIRECTOR
OF ADMINISTRATION
POSITION ORGANIZATION CHART

CHART XXXIV

OFFICE OF
THE DIRECTOR OF ADMINISTRATION

Dir. of Admin. Services, M-07 (#89291) 1.00

Secretary II, SR-14 (#44083) 1.00

PROGRAM AND BUDGET OFFICE

UH Admin. Off. IV, PO9** (#80199) 1.00
UH Fiscal Acctng.
Spec. III, PO7** (#80804) 1.00

ANALYTICAL SUPPORT FACILITY

Extramurally
Funded

PUBLICATIONS FACILITY

UH Res. Pubs. Mgr., P11 (#80098) 1.00
UH Graphic Artist III, PO8 (#80689) 1.00

PERSONNEL OFFICE

UH Personnel Off. III, PO7** (#80943) 1.00
UH Personnel Off. II, PO5 (#80769) 1.00
UH Personnel Off. I, PO3 (#80562) 1.00

RESEARCH COMPUTER FACILITY

Extramurally
Funded

ENGINEERING SUPPORT FACILITY

UH Elec. Eng. II, P15 (#80741) 0.50
UH Elec. Eng. I, P12 (#80772) 1.00
UH Elec. Eng. I, p12 (#80172) 0.50
UH Mech. Eng. I, P12 (#80770) 0.50

UH Elec. Tech. II, PO9 (#80334) 0.50
UH Elec. Tech. II, PO9 (#80724) 0.50
UH Scien. Inst. Tech. II, PO9 (#80717) 1.00
UH Comm. Supv., PO8 (#80752) 1.00
Eng. Lab Tech., WB-13 (#15505) 1.00

FINANCIAL MANAGEMENT SYSTEMS OFFICE

UH Fis. Actng. Spec. IV, PO9 (#81351) 1.00
UH Admin Off. VII, P15 (#80207) 1.00
UH Admin. Off. III, PO7 (#81924) 1.00
UH Admin. Off. III, PO7 (#81804) 1.00
UH Admin. Off. III, PO7 (#81489) 1.00
UH Admin. Off. III, PO7 (#81320) 1.00
UH Admin. Off. III, PO7 (#80958) 1.00
Secretary I, SR-12 (#14354) 1.00

UNIVERSITY MARINE CENTER/
SHIP OPERATIONS

Extramurally
Funded

CHART UPDATED
DATE JUL 20 2001

** To be reclassified

APPROVED:

C. Barry Raleigh

C. Barry Raleigh, Dean 7/01/2001

STATE OF HAWAII
UNIVERSITY OF HAWAII
UNIVERSITY OF HAWAII AT MANOA
SCHOOL OF OCEAN AND EARTH
SCIENCE AND TECHNOLOGY

DEPARTMENTS
POSITION ORGANIZATION CHART

CHART XXXV

CHART UPDATED

DATE JUL 20 2001

DEAN
SCHOOL OF OCEAN AND EARTH
SCIENCE AND TECHNOLOGY

OFFICE OF THE
ASSOCIATE DEAN

DEPARTMENT OF
GEOLOGY AND GEOPHYSICS

Chair *
Secretary II, SR-14 (#36725) 1.00
Faculty Positions (Joint Appt): 12.00
[#82011 (0.25), 82622 (0.50),
82729 (0.50), 83213 (0.50),
83643 (0.50), 84009 (0.50),
84795 (0.50), 85153 (0.50),
85338 (0.50), 85535 (0.50),
85865 (0.50), 85978 (0.50),
85997 (0.50), 86012 (0.50),
86351 (0.50), 86497 (0.50),
86576 (0.50), 86609 (0.50),
88168 (0.50), 88172 (0.50),
88174 (0.50), 85598 (0.75),
82130 (1.00)]
Graduate Assistants: 2.00
[#88075 (0.50), 88137 (0.50),
88443 (0.50), 88594 (0.50)]

15.00

DEPARTMENT OF
METEOROLOGY

Chair *
Secretary II, SR-14 (#14351) 1.00
UH Sci. Inst. Tech. II P-09 (#80708) 1.00
Faculty Positions: 12.00
[#82008 (1.00), 82077 (1.00),
82368 (1.00), 82491 (1.00),
82709 (1.00), 82712 (1.00),
83700 (1.00), 84107 (1.00),
84300 (1.00), 83721 (1.00),
83070 (1.00), 83735 (1.00)]
Graduate Assistants: 1.00
[#85028 (0.50), 88339 (0.50)]

15.00

DEPARTMENT OF
OCEANOGRAPHY

Chair *
Secretary II, SR-14 (#13891) 1.00
Faculty Positions (Joint Appt): 13.75
[#82059 (0.50), 82259 (0.50),
82291 (0.85), 82696 (0.50),
82726 (0.50), 82807 (0.50),
82961 (0.50), 83295 (0.50),
83355 (0.25), 83482 (0.50),
83499 (0.75), 84601 (1.00),
84673 (0.85), 84799 (0.50),
84826 (0.50), 85314 (0.80),
85920 (0.50), 85992 (0.50),
86000 (0.50), 86498 (0.50),
88156 (0.50), 88163 (0.50),
88167 (0.25), 82073 (1.00)]
Graduate Assistants: 2.50
[#84941 (0.50), 88119 (0.50),
88160 (0.50), 88569 (0.50),
87111 (0.50)]

17.25

DEPARTMENT OF OCEAN AND
RESOURCES ENGINEERING

Chair *
Secretary II, SR-14 (#18083) 1.00
UH Sci. Inst. Tech. II, PO9 (#80720) 1.00
Faculty Positions: 9.00
Full Time: [#83875 (1.00), 82736 (1.00),
83376 (1.00), 83802 (1.00), 88614 (1.00),
84118 (1.00), 84447 (1.00),
85359 (1.00), 85442 (1.00)]
Graduate Assistants: 0.50
[#88382 (0.50)]

11.50

APPROVED:

C. Barry Raleigh, Dean 07-01-2001

DEAN
SCHOOL OF OCEAN AND EARTH
SCIENCE AND TECHNOLOGY

STATE OF HAWAII
UNIVERSITY OF HAWAII
UNIVERSITY OF HAWAII AT MANOA
SCHOOL OF OCEAN AND EARTH
SCIENCE AND TECHNOLOGY
RESEARCH DIVISIONS
POSITION ORGANIZATION CHART
CHART XXXVI

METEOROLOGY -
PHYSICAL OCEANOGRAPHY

Chair *

Professor, I5	(#83482)	0.50
Professor, I5-R	(#82696)	0.50
Assoc. Professor, I4	(#82807)	0.50
Assoc. Professor, I4-R	(#82726)	0.50
Assoc. Professor, I4-R	(#85920)	0.50
Assoc. Professor, I4-R	(#88156)	0.50
Asst. Professor, I3-R	(#84826)	0.50
Assoc. Professor, I4-R	(#83031)	0.50

VOLCANOLOGY - PETROLOGY

Chair*

Secretary II, SR-14	(#14352)	1.00
MacDonald Prof. of Volcanology, I5-R	(#85535)	0.50
Professor, I5-R	(#85153)	0.50
Professor, I5-R	(#88174)	0.50
Assoc. Professor, I4-R	(#82729)	0.50
Assoc. Professor, I4-R	(#84795)	0.50
Professor, I5-R	(#85997)	0.50
Professor, I5-R	(#86012)	0.50
Assoc. Professor, I4-R	(#85978)	0.50

MARINE GEOPHYSICS -
SEISMOLOGY

Chair*

Secretary II, SR-14	(#14350)	1.00
Professor, I5-R	(#83643)	0.50
Professor, I5-R	(#88172)	0.50
Professor, I5-R	(#82011)	0.75
Professor, I5-R	(#88168)	0.50
Geophysicist, R5	(#86351)	0.50
Geophysicist, R5	(#86497)	0.50
Professor, I5-R	(#85338)	0.50
Assoc. Professor, I4-R	(#86576)	0.50
Professor, I5-R	(#86609)	0.50
Assoc. Professor, I4-R	(#85865)	0.50
UH Ed. Spec. II, PO6	(#80803)	0.50

MARINE GEOLOGY -
GEOCHEMISTRY

Chair*

Secretary II, SR-14	(#36897)	1.00
Professor, I5-R	(#82622)	0.50
Professor, I5-R	(#86000)	0.50
Professor, I5-R	(#82259)	0.50
Professor, I5-R	(#83295)	0.50
Professor, I5-R	(#86498)	0.50
Professor, I5-R	(#83499)	0.25
Professor, I5	(#82059)	0.50
Researcher, R5	(#84799)	0.50
Researcher, R5	(#84009)	0.50
Researcher, R5	(#85339)	1.00
Specialist, S5	(#88178)	0.75
Assoc. Researcher, R4	(#85992)	0.50
Assoc. Spec., S4	(#88488)	0.75
Jr. Specialist, S2	(#88194)	0.75
Secretary II, SR-14	(#51280)	1.00

CHART UPDATED
DATE JUL 20 2001

MARINE BIOLOGY AND
COASTAL ECOSYSTEMS

Chair*

Affiliate members
from Hawaii Institute
of Marine Biology

BIOLOGICAL
OCEANOGRAPHY

Chair *

Secretary II, SR-14	(#36896)	1.00
Professor, I5	(#84673)	0.15
Professor, I5	(#83355)	0.25
Professor, I5	(#85314)	0.20
Professor, I5-R	(#88167)	0.25
Researcher, R5	(#82800)	1.00
Assoc. Professor, I4-R	(#88163)	0.50
Assoc. Professor, I4-R	(#82961)	0.50
Asst. Professor, I3-R	(#82291)	0.15

ENERGY RESOURCES AND
OCEAN ENGINEERING

Chair *

Affiliate members
from Hawaii Natural
Energy Institute

STATE OF HAWAII
UNIVERSITY OF HAWAII
UNIVERSITY OF HAWAII AT MANOA
SCHOOL OF OCEAN AND EARTH
SCIENCE AND TECHNOLOGY

HAWAII INSTITUTE OF MARINE BIOLOGY
POSITION ORGANIZATION CHART

CHART XXXVII

DEAN
SCHOOL OF OCEAN AND EARTH
SCIENCE AND TECHNOLOGY

OFFICE OF THE DIRECTOR
HAWAII INSTITUTE OF MARINE BIOLOGY
Chart XXXVIIA

ADMINISTRATIVE AND
FACILITIES SUPPORT
Chart XXXVIIA

CHART UPDATED
DATE JUL 20 2001

PLANKTON
INVESTIGATIONS
Chart XXXVIIIB

CORAL
ECOLOGY
Chart XXXVIIIB

FISHERIES
INVESTIGATIONS
Chart XXXVIIIB

AQUACULTURE
Chart XXXVIIIB

FISH
ENDOCRINOLOGY
Chart XXXVIIIB

BEHAVIORAL
STUDIES
Chart XXXVIIIB

BIOCHEMICAL
STUDIES
Chart XXXVIIIC

SUMMER
INSTITUTE
Chart XXXVIIIC

STATE OF HAWAII
UNIVERSITY OF HAWAII
UNIVERSITY OF HAWAII AT MANOA
SCHOOL OF OCEAN AND EARTH
SCIENCE AND TECHNOLOGY

HAWAII INSTITUTE OF MARINE BIOLOGY
POSITION ORGANIZATION CHART

CHART XXXVIIA

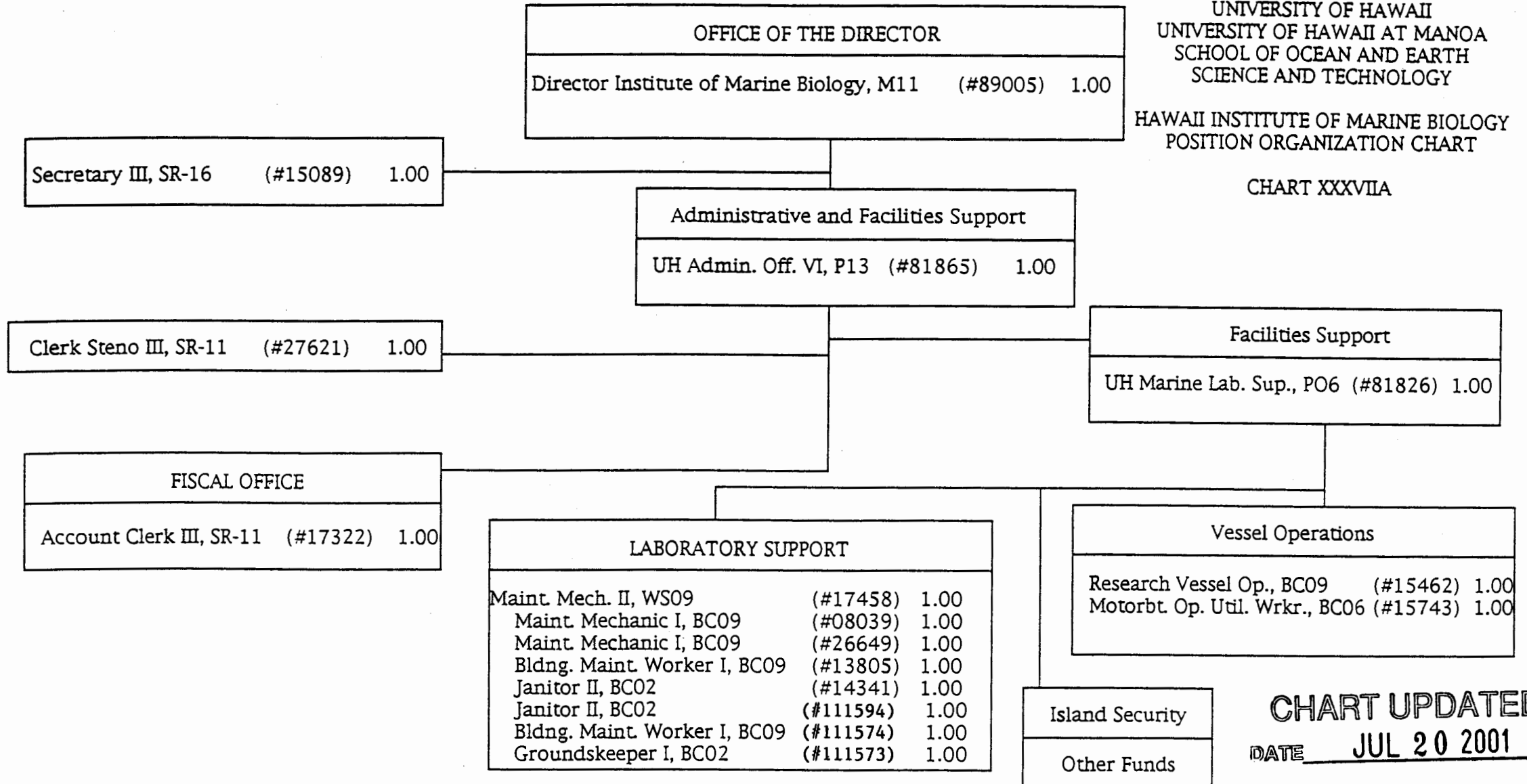


CHART UPDATED
DATE JUL 20 2001

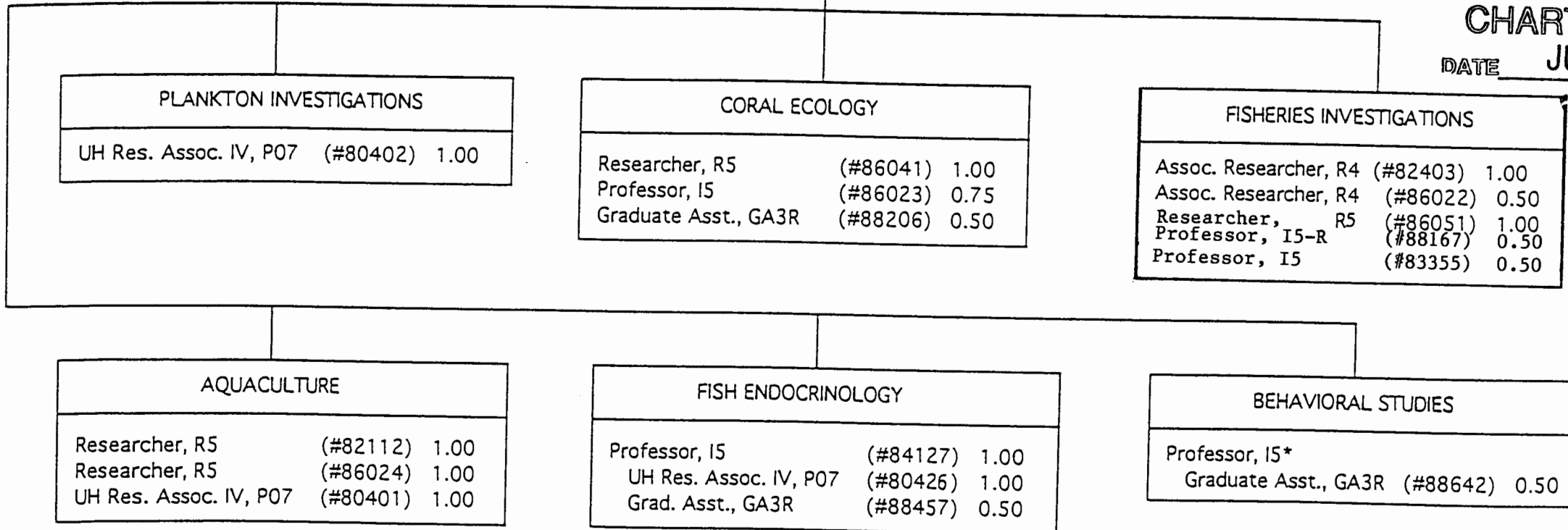
STATE OF HAWAII
 UNIVERSITY OF HAWAII
 UNIVERSITY OF HAWAII AT MANOA
 SCHOOL OF OCEAN AND EARTH
 SCIENCE AND TECHNOLOGY

HAWAII INSTITUTE OF MARINE BIOLOGY
 POSITION ORGANIZATION CHART

CHART XXXVIII B

CHART UPDATED
 DATE JUL 20 2001

OFFICE OF THE DIRECTOR



*Position from Zoology

STATE OF HAWAII
UNIVERSITY OF HAWAII
UNIVERSITY OF HAWAII AT MANOA
SCHOOL OF OCEAN AND EARTH
SCIENCE AND TECHNOLOGY

HAWAII INSTITUTE OF MARINE BIOLOGY
POSITION ORGANIZATION
CHART

CHART XXXVIIC

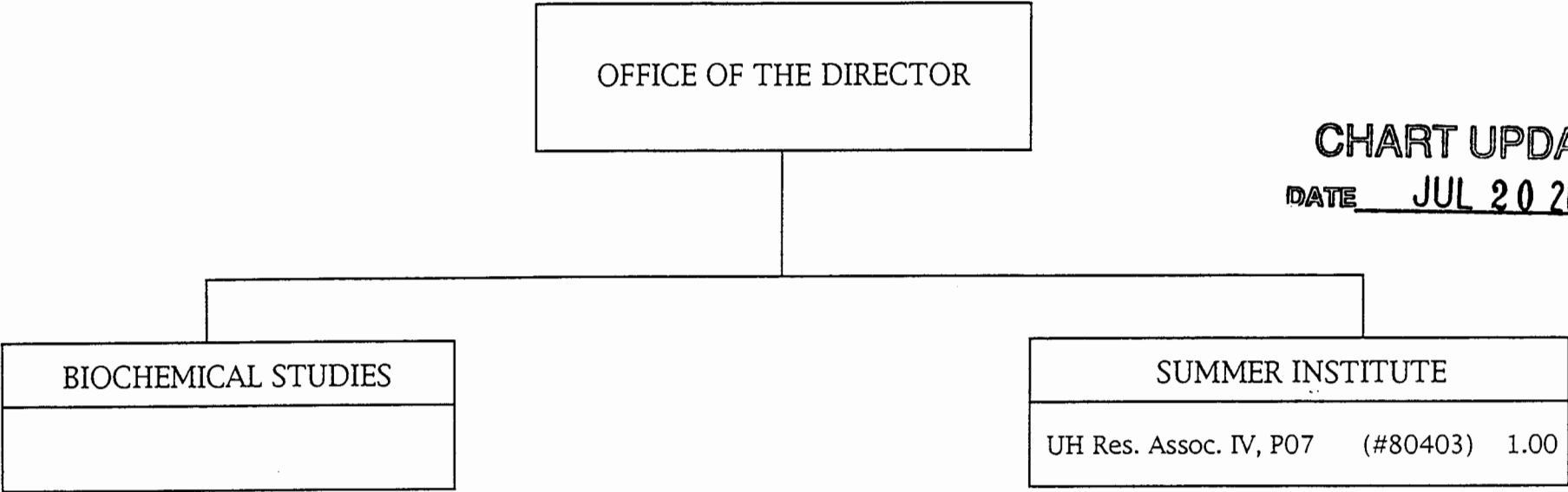
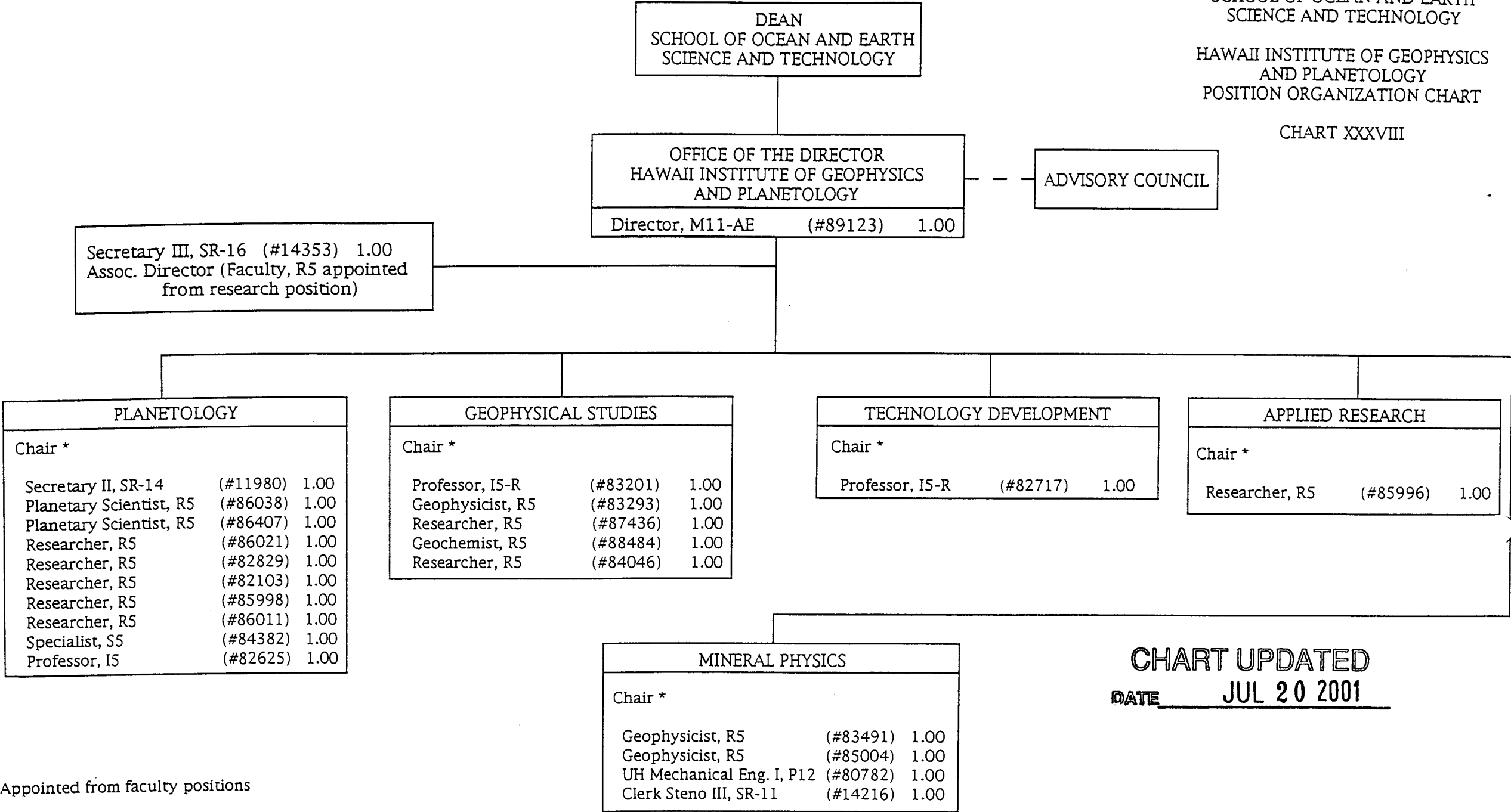


CHART UPDATED
DATE JUL 20 2001

CHART UPDATED
DATE _____



*Appointed from faculty positions

STATE OF HAWAII
UNIVERSITY OF HAWAII
UNIVERSITY OF HAWAII AT MANOA
SCHOOL OF OCEAN AND EARTH SCIENCE AND TECHNOLOGY
HAWAII NATURAL ENERGY INSTITUTE

POSITION ORGANIZATION CHART
CHART XXXIX

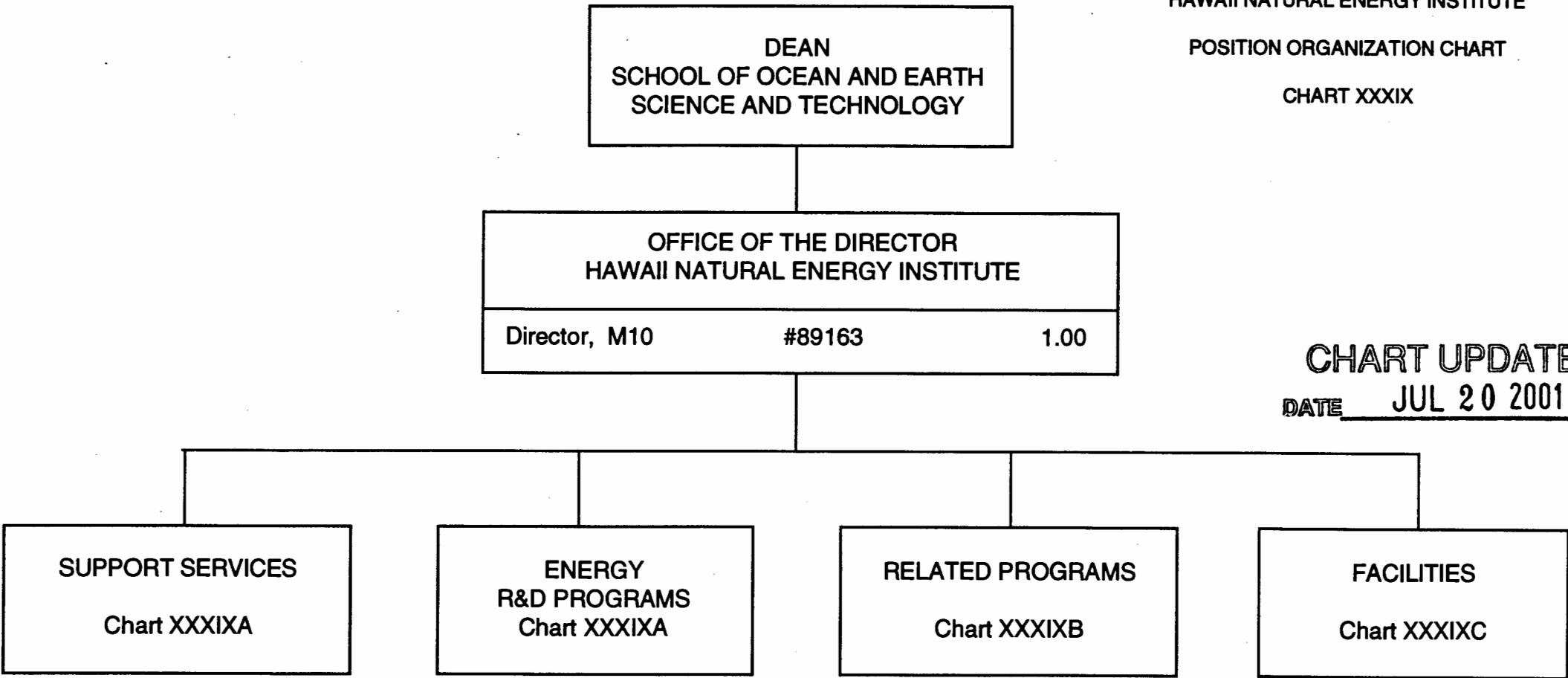


CHART UPDATED
DATE JUL 20 2001

STATE OF HAWAII
UNIVERSITY OF HAWAII
UNIVERSITY OF HAWAII AT MANOA
SCHOOL OF OCEAN AND EARTH SCIENCE AND TECHNOLOGY
HAWAII NATURAL ENERGY INSTITUTE

POSITION ORGANIZATION CHART

CHART XXXIXA

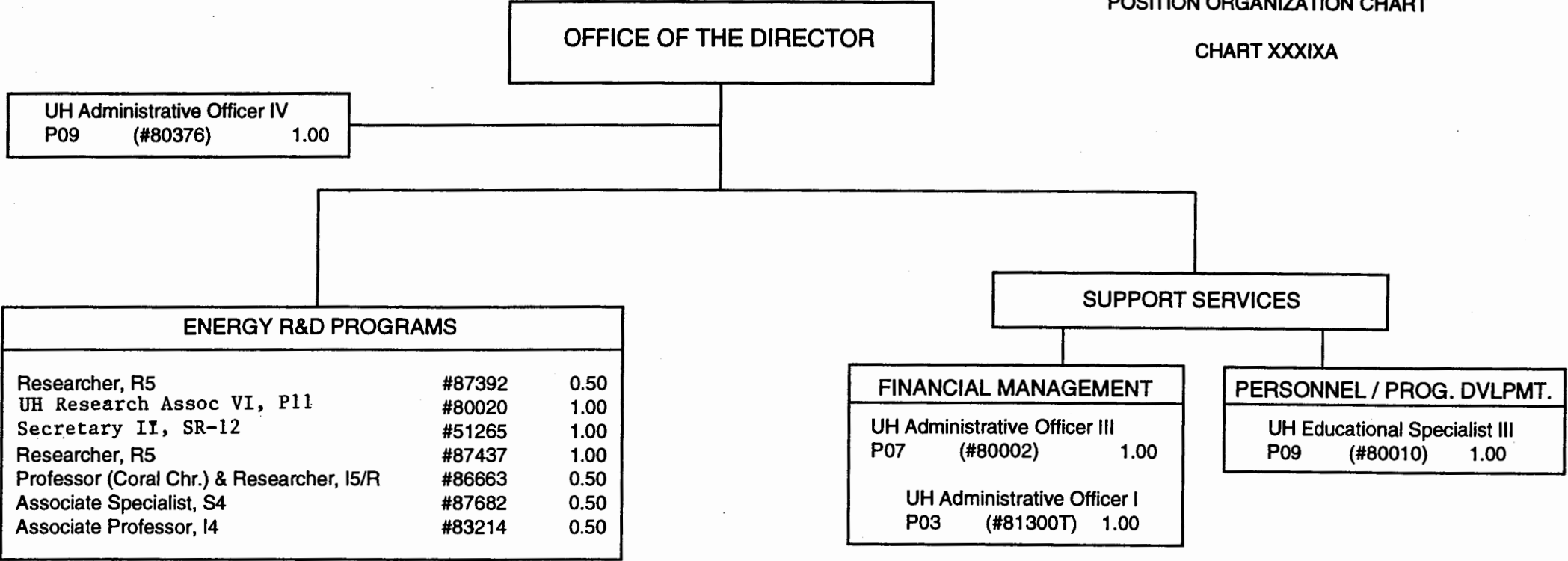


CHART UPDATED
DATE JUL 20 2001

STATE OF HAWAII
UNIVERSITY OF HAWAII
UNIVERSITY OF HAWAII AT MANOA
SCHOOL OF OCEAN AND EARTH SCIENCE AND TECHNOLOGY
HAWAII NATURAL ENERGY INSTITUTE

POSITION ORGANIZATION CHART

CHART XXXIXB

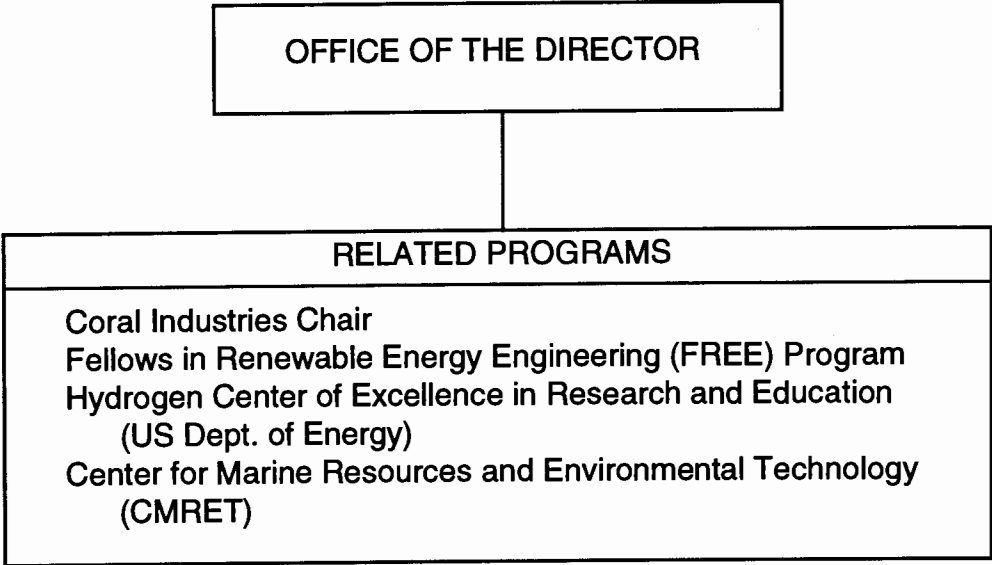


CHART UPDATED
DATE JUL 20 2001

STATE OF HAWAII
UNIVERSITY OF HAWAII
UNIVERSITY OF HAWAII AT MANOA
SCHOOL OF OCEAN AND EARTH SCIENCE AND TECHNOLOGY
HAWAII NATURAL ENERGY INSTITUTE

POSITION ORGANIZATION CHART

CHART XXXIXC

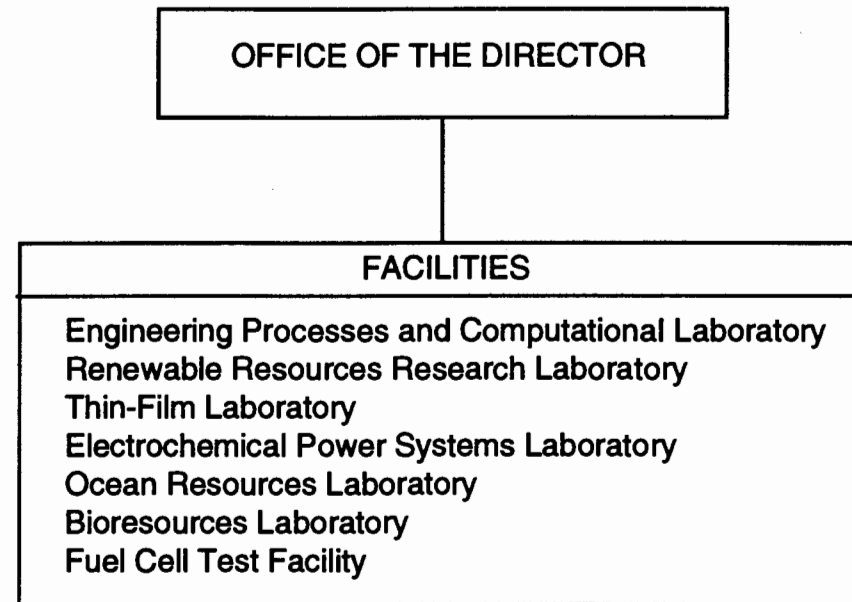


CHART UPDATED
DATE JUL 20 2001

STATE OF HAWAII
UNIVERSITY OF HAWAII
UNIVERSITY OF HAWAII AT MANOA
SCHOOL OF OCEAN AND EARTH
SCIENCE AND TECHNOLOGY

SEA GRANT COLLEGE PROGRAM
ORGANIZATION CHART

CHART XL

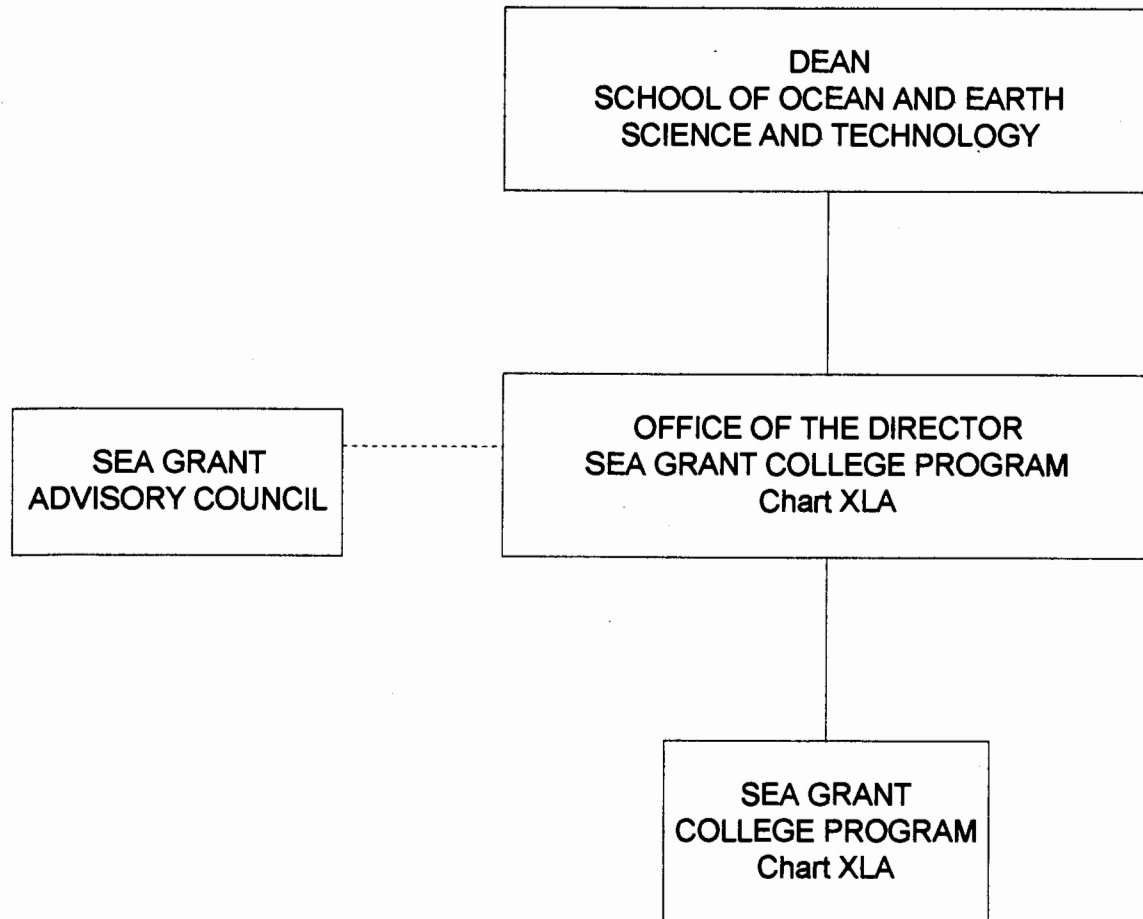


CHART UPDATED
DATE JUL 20 2001

STATE OF HAWAII
UNIVERSITY OF HAWAII
UNIVERSITY OF HAWAII AT MANOA
SCHOOL OF OCEAN AND EARTH
SCIENCE AND TECHNOLOGY

SEA GRANT COLLEGE PROGRAM
ORGANIZATION CHART

CHART XLA

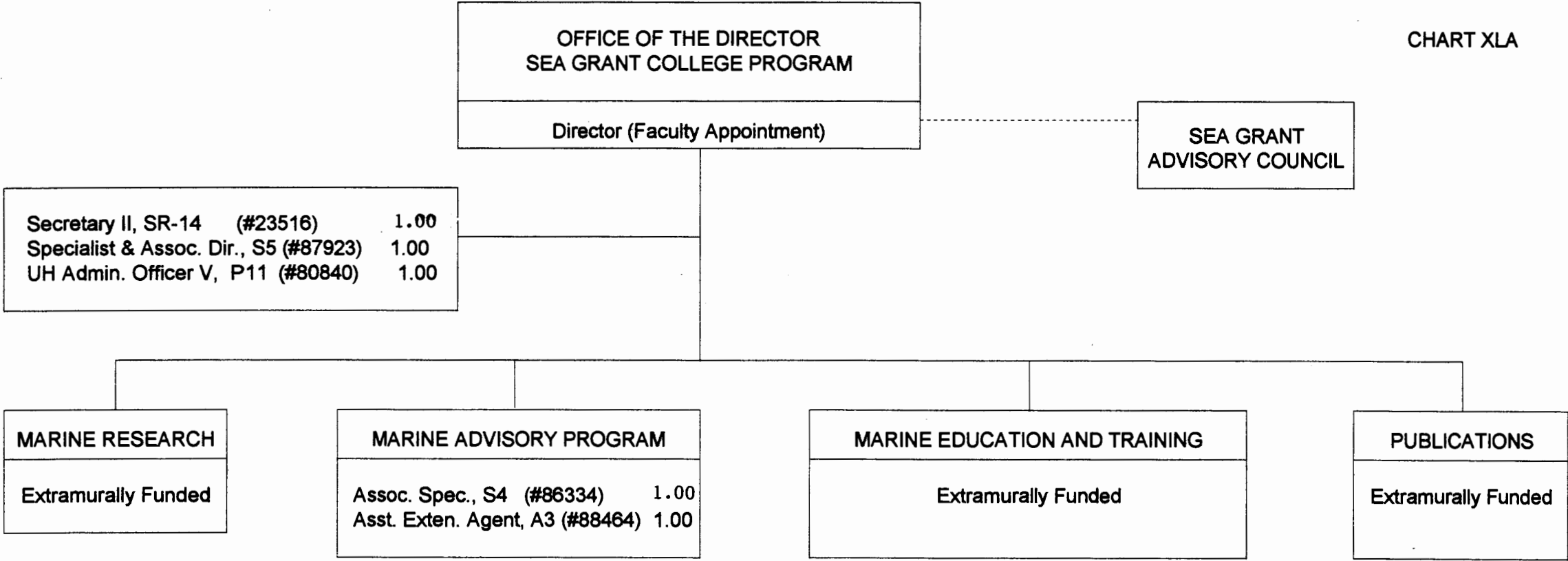


CHART UPDATED
DATE JUL 20 2001

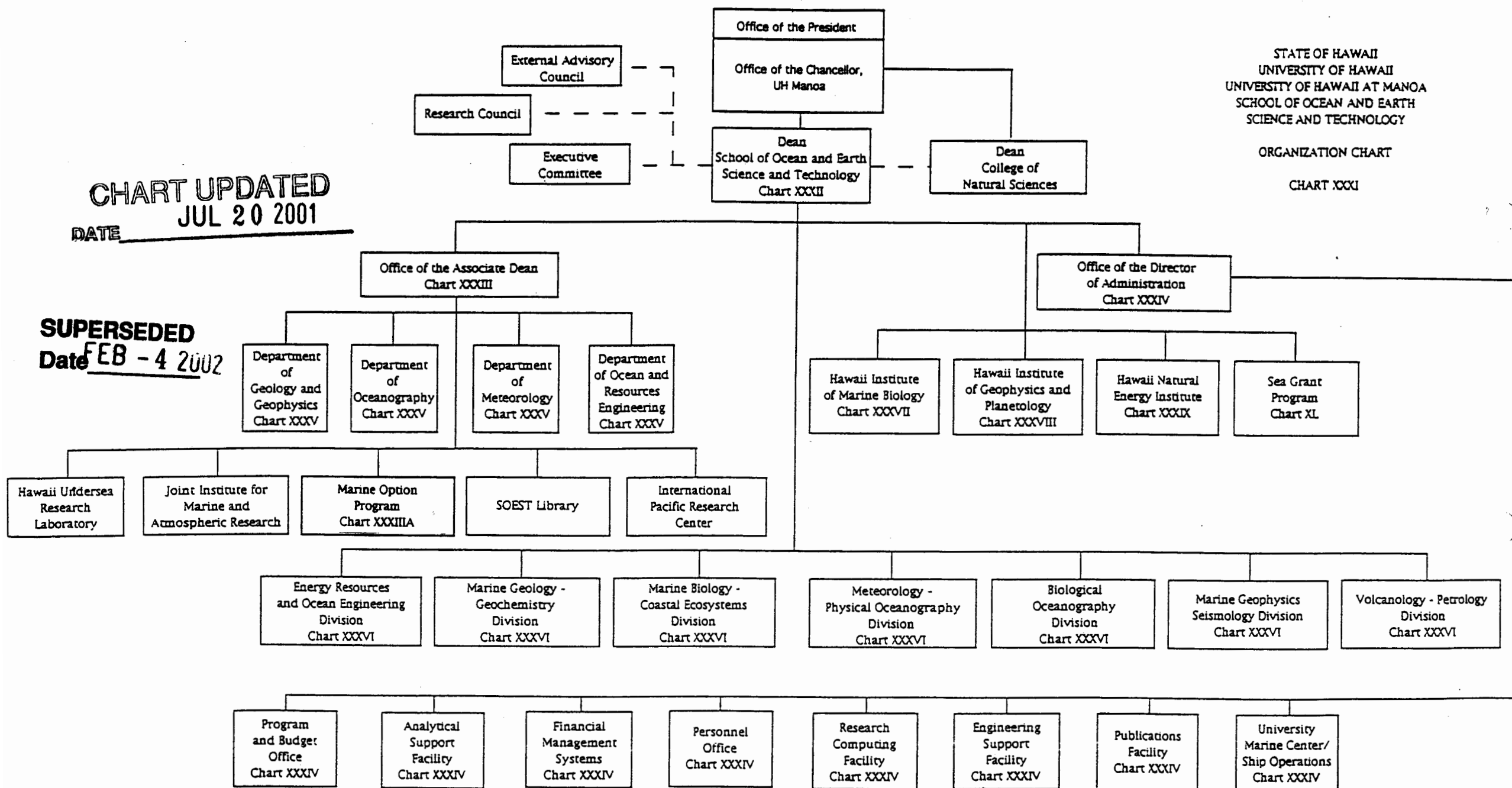
STATE OF HAWAII
UNIVERSITY OF HAWAII
UNIVERSITY OF HAWAII AT MANOA
SCHOOL OF OCEAN AND EARTH
SCIENCE AND TECHNOLOGY

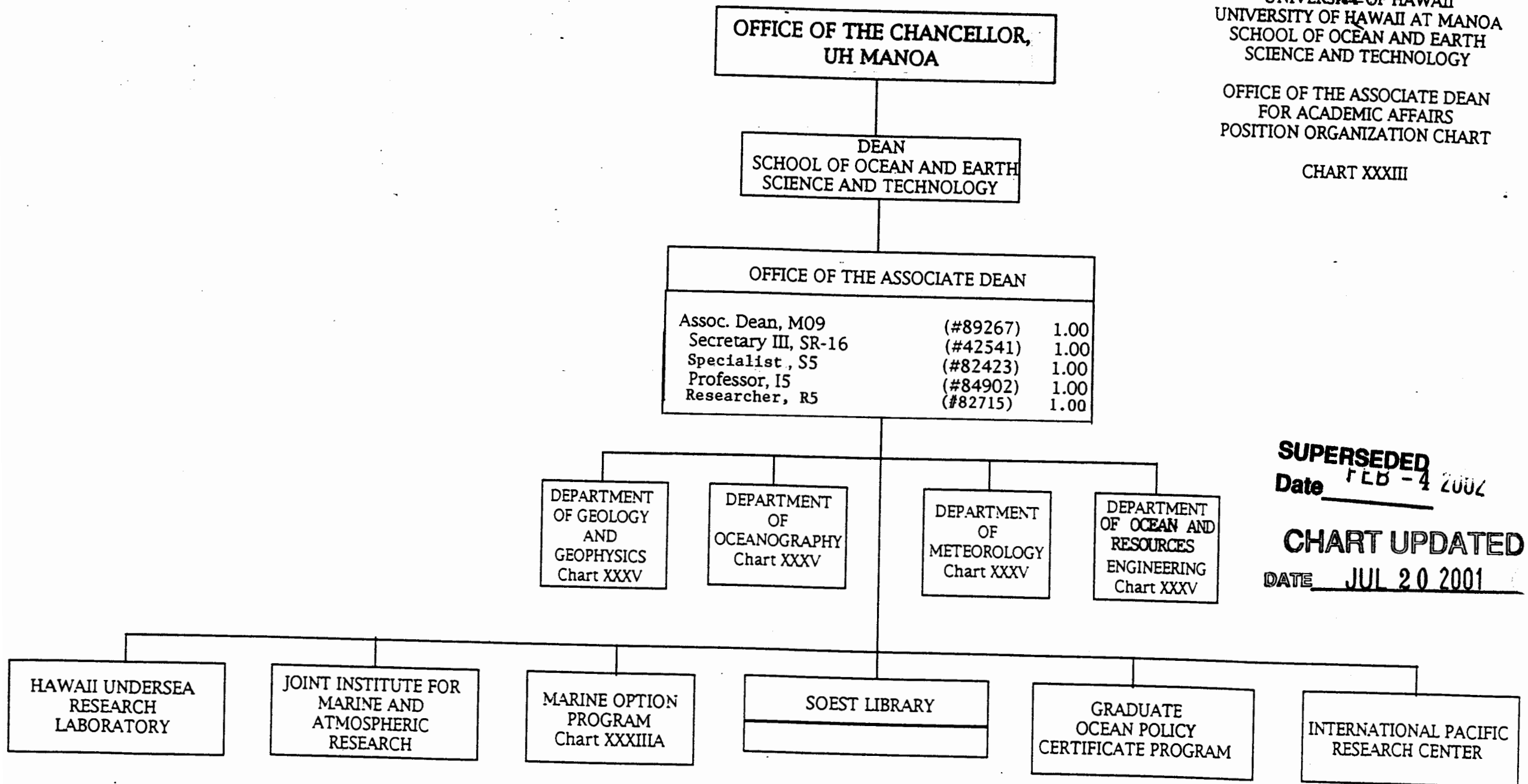
ORGANIZATION CHART

CHART XXXI

CHART UPDATED
JUL 20 2001
DATE _____

SUPERSEDED
Date FEB - 4 2002





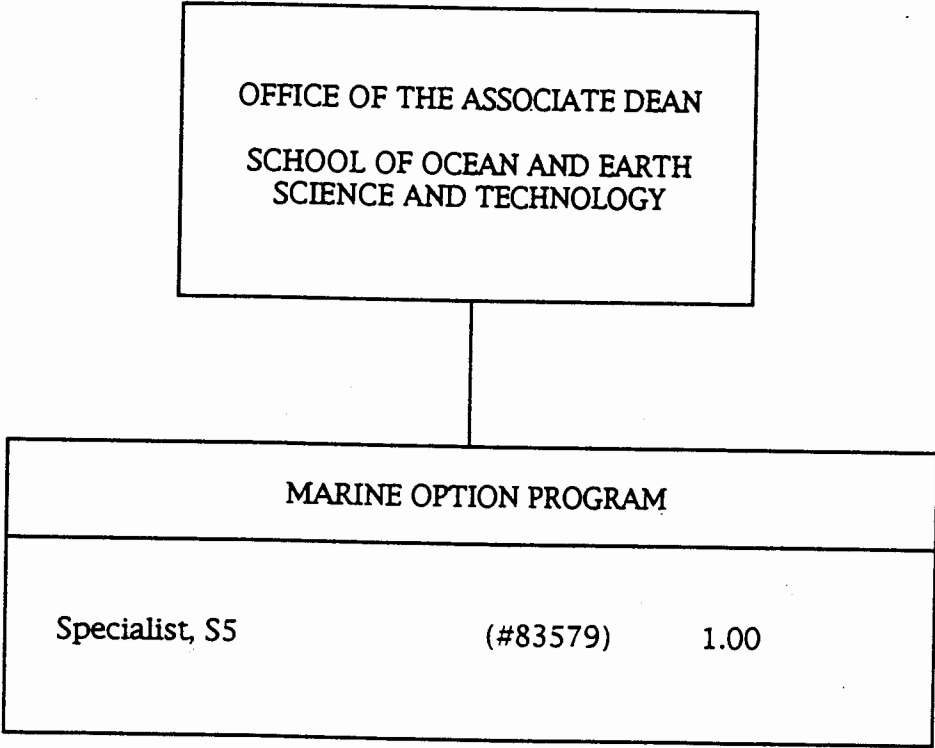
SUPERSEDED
Date FEB -4 2002

CHART UPDATED
DATE JUL 20 2001

STATE OF HAWAII
UNIVERSITY OF HAWAII
UNIVERSITY OF HAWAII AT MANOA
SCHOOL OF OCEAN AND EARTH
SCIENCE AND TECHNOLOGY

MARINE OPTION PROGRAM
POSITION ORGANIZATION CHART

CHART XXXIIIA



SUPERSEDED
Date FEB - 4 2002 **CHART UPDATED**
DATE JUL 20 2001