

**OFFICE OF THE CHANCELLOR
UNIVERSITY OF HAWAI'I at MĀNOA**

State of Hawai'i
University of Hawai'i
University of Hawai'i at Mānoa

OFFICE OF THE VICE PRESIDENT FOR STUDENT AFFAIRS

Office:
UHM Student Services

Chart IV-A

Chart: IV
[CURRENT]

OFFICE OF ADMINISTRATIVE SERVICES

Chart IV-A

**OFFICE OF THE DIRECTOR OF STUDENT
EQUITY, EXCELLENCE AND DIVERSITY**

Chart IV-A

Center for Adults
Returning to Education
Chart IV-O

College Opportunities
Program
Chart IV-L

Hawai'i Opportunity
Program in Education
Chart IV-P

KOKUA Program
Chart IV-S

Operation Kua'ana
Chart IV-Q

Office of Multicultural
Student Services
Chart IV-R

Women's Center
Chart IV-M

**OFFICE OF THE DEAN OF STUDENTS
AND STUDENT SERVICES (UHM)**

Chart IV-A

Co-curricular Activities,
Programs and Services
Chart IV-D

Career Services
Chart IV-I

Counseling and
Student Development
Center
Chart IV-J

Children's Center
Chart IV-N

International
Student Services
Chart IV-H

School and College
Services
Chart IV-F

Student Employment and
Cooperative Education
Chart IV-G

University Health
Services
Chart IV-K

Student Housing
Services
Chart IV-E

**OFFICE OF THE DIRECTOR OF UNIVERSITYWIDE
STUDENT AFFAIRS/ASSISTANT TO THE VP**

Chart IV-A

Admissions and
Records
Chart IV-B

Financial Aid Services
Chart IV-C

CHART UPDATED
DATE JUL - 1 2001

**OFFICE OF THE CHANCELLOR
UNIVERSITY OF HAWAI'I at MĀNOA**

OFFICE OF THE VICE PRESIDENT FOR STUDENT AFFAIRS

Vice President for Student Affairs, M13, #89103

ADMINISTRATIVE SUPPORT

Director of Student Enr Svcs, M6, #89309
Private Secretary II, SR22, #37046
Associate Specialist, S4, #82637

OFFICE OF ADMINISTRATIVE SERVICES

UH Administrative Officer VI, P13, #80146

FISCAL SERVICES

Account Clerk III, SR11, #21426

PERSONNEL SERVICES

UH Personnel Officer II, P05, #81879
Personnel Clerk V, SR13, #44556

CHART UPDATED
DATE JUL -1 2001

**OFFICE OF THE DIRECTOR OF STUDENT
EQUITY, EXCELLENCE AND DIVERSITY**

Director of Minority Students, M6, #89298
UH Administrative Officer III, P07, #81088
Specialist, S5, #82594
UH Student Services Specialist, #81063*

**OFFICE OF THE DEAN OF STUDENTS
AND STUDENT SERVICES (UHM)**

Dean of Student Services (UHM), M9, #89133
Secretary III, SR16, #00745
Assistant Specialist, S3, #84173
Assistant Specialist, S3, #83035
Assistant Specialist, S3, #85485
Assistant Specialist, S3, #88099
UH Student Services Spec III, P09, #81374(R)

**OFFICE OF THE DIRECTOR OF UNIVERSITYWIDE
STUDENT AFFAIRS/ASSISTANT TO THE VP**

Supervision temporarily provided by VPSA, #89103
Secretary II, SR14, #44996
UH Institutional Analyst III, P10, #81734
UH Educational Specialist III, P09, #81210
UH Student Services Specialist IV, P12, #81298

Office:
UHM Student Services
Admissions and Records

Chart: IV-B
[CURRENT]

OFFICE OF THE DIRECTOR OF UNIVERSITYWIDE
STUDENT AFFAIRS/ASSISTANT TO THE VP

ADMISSIONS AND RECORDS

Specialist, S5, #82701

ADMINISTRATIVE SUPPORT

Secretary II, SR 14, #14866
UH Student Services Specialist IV, P12, #81154 (.3)

CHART UPDATED
DATE JUL -1 2001

ADMISSIONS AND RESIDENCY

UH Student Services Specialist IV, P12, #81154 (.7)
Clerk Supervisor III, SR14, #00748
Clerk IV, SR10, #00772, #12550, #12842, #12843
#13495, #13496, #18009, #21427
#26538
UH Student Services Specialist III, P09, #80626
UH Student Services Specialist III, P09, #81414
UH Student Services Specialist III, P09, #80625
Clerk IV, SR10, #11496
UH Student Services Specialist III, P09, #80530
UH Student Services Specialist III, P09, #80096

RECORDS AND REGISTRATION

UH Student Services Specialist IV, P12, #81614
UH Student Services Specialist III, P09, #80658
Clerk Supervisor III, SR14, #17447
Clerk IV, SR10, #00750, #13959, #14863, #14864
#14865(R), #15502, #17450, #18010
#21430, #40006
Clerk III, SR8, #13494 (R), #26539(R)
Scheduler, SR20, #05837

INFORMATION AND COMPUTER SERVICES

UH Student Services Specialist IV, P12, #81070
UH IT Specialist, PBB, #80017
UH Student Services Specialist I, P03, #81071
Clerk Supervisor II, SR12, #22322
Clerk IV, SR10, #40004, #40005, #15501
Clerk-Stenographer II, SR9, #22321
Clerk III, SR8, #40003
UH IT Specialist PBB, #80018

General Funds 42.00
Revolving Funds 3.00

Office:
UHM Student Services
Financial Aid Services

Chart: IV-C
[CURRENT]

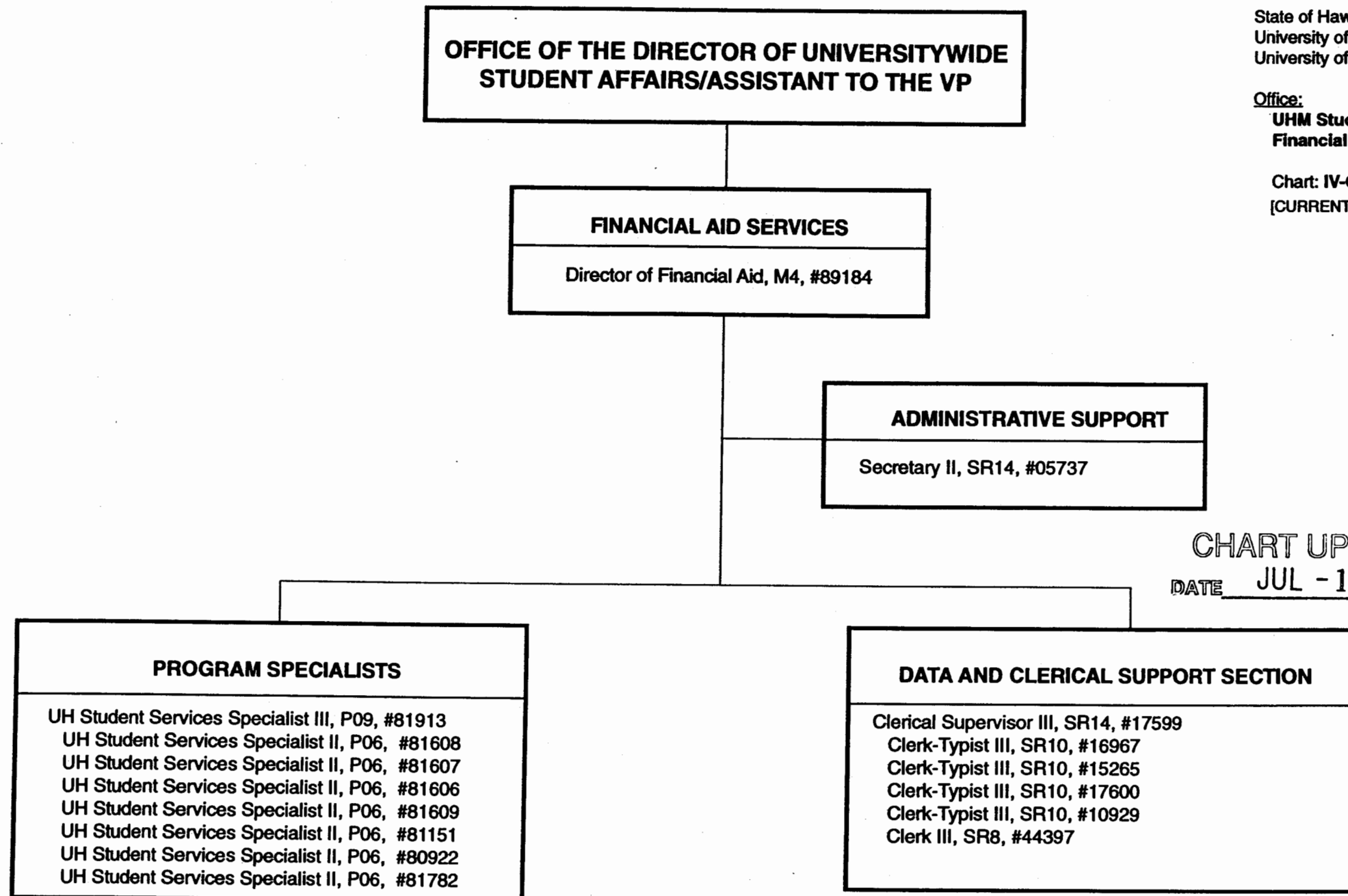


CHART UPDATED
DATE JUL - 1 2001

**OFFICE OF THE DEAN OF STUDENTS AND STUDENT SERVICES
(UHM)**

State of Hawai'i
University of Hawai'i
University of Hawai'i at Mānoa

Office:
**UHM Student Services
Co-Curricular Activities,
Programs and Services**

Chart: IV-D
[CURRENT]

CO-CURRICULAR ACTIVITIES, PROGRAMS & SERVICES
Director of Bureau of Student Activities, M4, #89190

ADMINISTRATIVE AND FISCAL SUPPORT

UH Administrative Officer IV, P09, #80163 (R)
UH Adm/Fiscal Support Specialist, P01, #80649 (R)
Account Clerk IV, SR13, #25700 (R)
Account Clerk III, SR11, #45362 (R)

CLERICAL SUPPORT

Secretary II, SR14, #13587
Clerk-Typist III, SR10, #28134 (R)
Clerk-Typist II, SR08, #25699 (R)
Clerk II, SR06, #25698 (R)

INTRAMURAL SPORTS

Specialist, S5, #83512
Specialist, S5, #85083
Junior Specialist, S2, #83788
Clerk-Typist II, SR08, #26460

**STUDENT LEADERSHIP DEVELOPMENT
& CO-CURRICULAR INTERVENTIONS
PROGRAMS**

Associate Specialist, S4, #82864
Junior Specialist, S2, #82573
Assistant Specialist, S3, #82597
UH Student Services Specialist II, P06, #81510(R)
UH Student Services Specialist II, P06, #80025(R)
UH Publication Specialist III, P07, #81186(R)
UH Adm/Fiscal Support Specialist, P01, #81137(R)
Junior Specialist, S2, #88334(R)
UH Publication Spec II, P05, #81486(R)
UH Publication Spec I, P03, #81488(R)
UH Publication Spec I, P03, #81506(R)
UH Student Services Specialist II, P06, #81134

**OPERATIONAL PROGRAMS,
FACILITIES AND SERVICES**

Assistant Specialist, S3, #88328(R)
UH Student Services Specialist III, P09, #80660(R)
Building Maintenance Worker I, WB09, #28597(R)
Janitor II, BC02, #25329(R), #25392(R),
#44089(R), #46560(R)
Bldg & Grnds Util Worker, #BC05, #45379(R),
#44085(R), #44109(R)
UH Student Services Specialist II, P06, #80631(R)
UH Student Services Specialist I, P03, #80942(R)
Junior Specialist, S2, #88765(R)

CHART UPDATED
DATE JUL - 1 2001

General Funds 10.00
Revolving Funds 28.00

OFFICE OF THE DEAN OF STUDENTS AND STUDENT SERVICES (UHM)

State of Hawai'i
University of Hawai'i
University of Hawai'i at Mānoa

Office:
**UHM Student Services
Student Housing Services**

Chart: IV-E
[CURRENT]

STUDENT HOUSING SERVICES

Director of Student Housing,
M6, #89007 (R)

UH IT Spec, PBB, #81361 (R)
UH IT Spec, #96508F (R)*

Secretary II,
SR14, #00743 (R)

**CONFERENCE
ASSIGNMENTS
OFF-CAMPUS HSG**

UH Student Svs Spec II,
P06, #81612 (R)
Clerk-Typist IV,
SR12, #34981 (R)
Clerk-Typist II,
SR8, #18115 (R)
SR8, #15287 (R)
Clerk-Typist, #96005F (R)*
Univ Security Officer,
#46110^(c)(R)

**FISCAL
PERSONNEL**

UH Adm Officer IV,
P09, #80193 (R)
UH Adm Officer II,
P05, #81103 (R)
Account Clerk III,
SR11, #24026 (R)
Clerk-Steno III,
SR11, #18701 (R)
Cashier I,
SR10, #28336 (R)

ASSISTANT DIRECTOR

UH Student Svs Spec IV,
P12, #80630 (R)

**EDUCATIONAL
DEVELOPMENT**

UH Student Svs Spec II,
P06, #81611 (R)

PHYSICAL PLANT

Clerk-Typist, #13566^(b)(R)
UH Student Svs Spec II,
P06, #80629 (R)
UH Registered Architect I,
P13, #77005 ^(a)(R)
UH Environmental Safety
Spec II, P05, #81680 ^(a) (R)

CHART UPDATED
DATE **JUL - 1 2001**

MAUKA/MAKAI

UH Student Hsg Coord II,
P07, #80598 (R)
UH Student Hsg Coord I,
P05, #80594 (R)
Clerk-Typist II,
SR8, #24249 (R), #23582 (R)
Bldg Maint Worker I,
BC9, #31245 (R), #13578 (R)
Groundskeeper II,
WS2, #31246 (R)

HALE ALOHA

UH Student Hsg Coord II,
P07, #80597 (R)
Clerk-Steno II,
SR9, #24250 (R)
Bldg Maint Worker I,
BC9, #31242 (R)
Groundskeeper II,
WS2, #24251 (R)
UH Student Hsg Coord,
#96507F (R)*

HALE NOELANI

UH Student Hsg Coord I,
P05, #80924 (R)
Clerk-Typist II,
SR8, #28545 (R)
Bldg Maint Worker I,
BC9, #23493 (R)

HALE WAINANI

UH Student Hsg Coord I,
P05, #80595(R)
Clerk-Typist II,
SR8, #31244 (R)
Groundskeeper I,
BC02, #31243 (R)
Bldg Maint Worker I,
BC9, #11058

SECURITY

Univ Security Officer I,
SR14, #46108 ^(a) (R)

(a) Student Housing Services position assigned to and supervised by Campus Operations
(b) Formerly classified as Clerk-Typist; position to be redescribed
(c) Formerly classified as Univ Security Officer; position to be redescribed
*Pending Establishment

Office:
UHM Student Services
School and College Services

Chart: IV-F
[CURRENT]

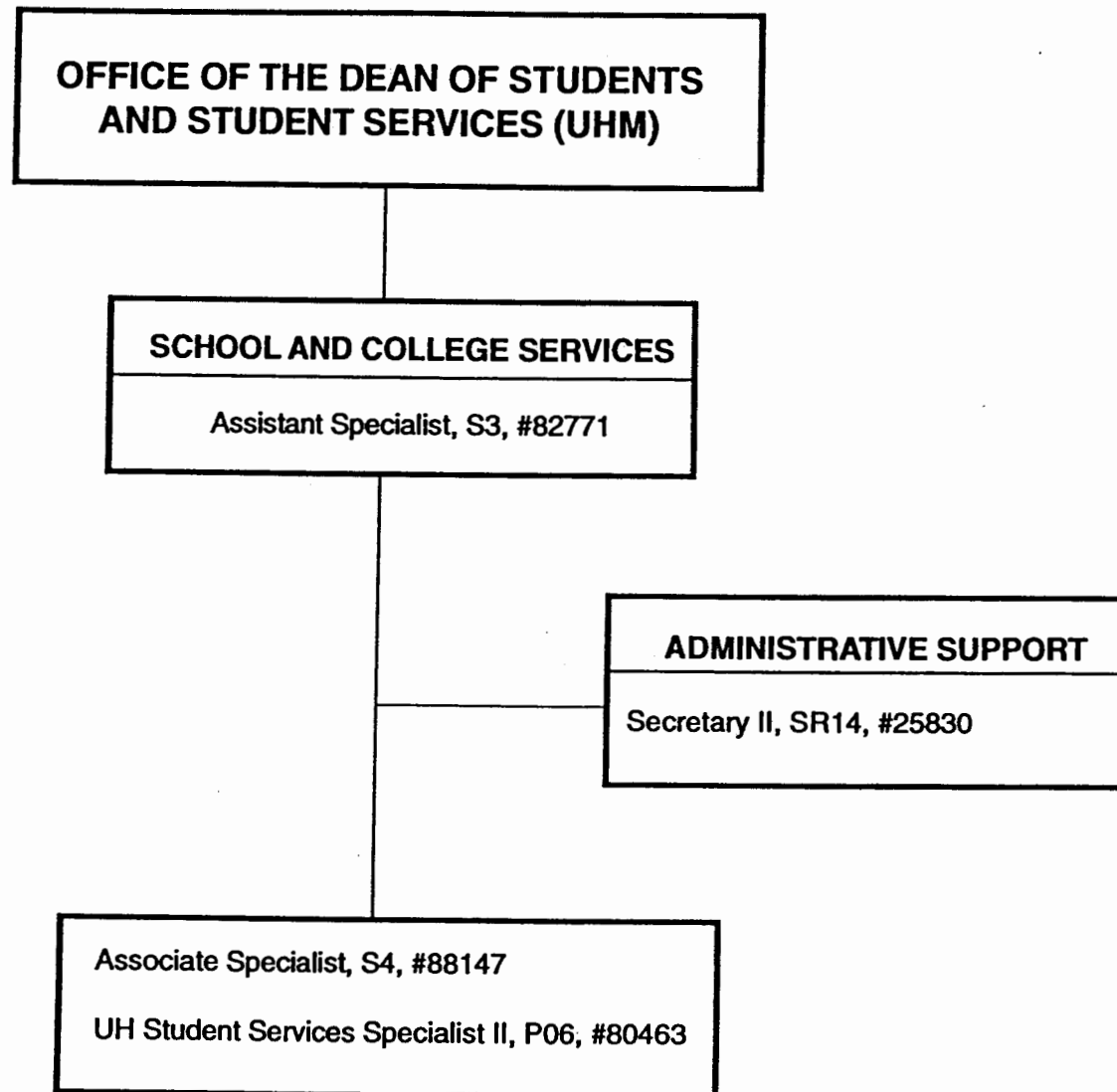


CHART UPDATED
DATE JUL - 1 2001

Office:
UHM Student Services
Student Employment and
Cooperative Education

Chart: IV-G
[CURRENT]

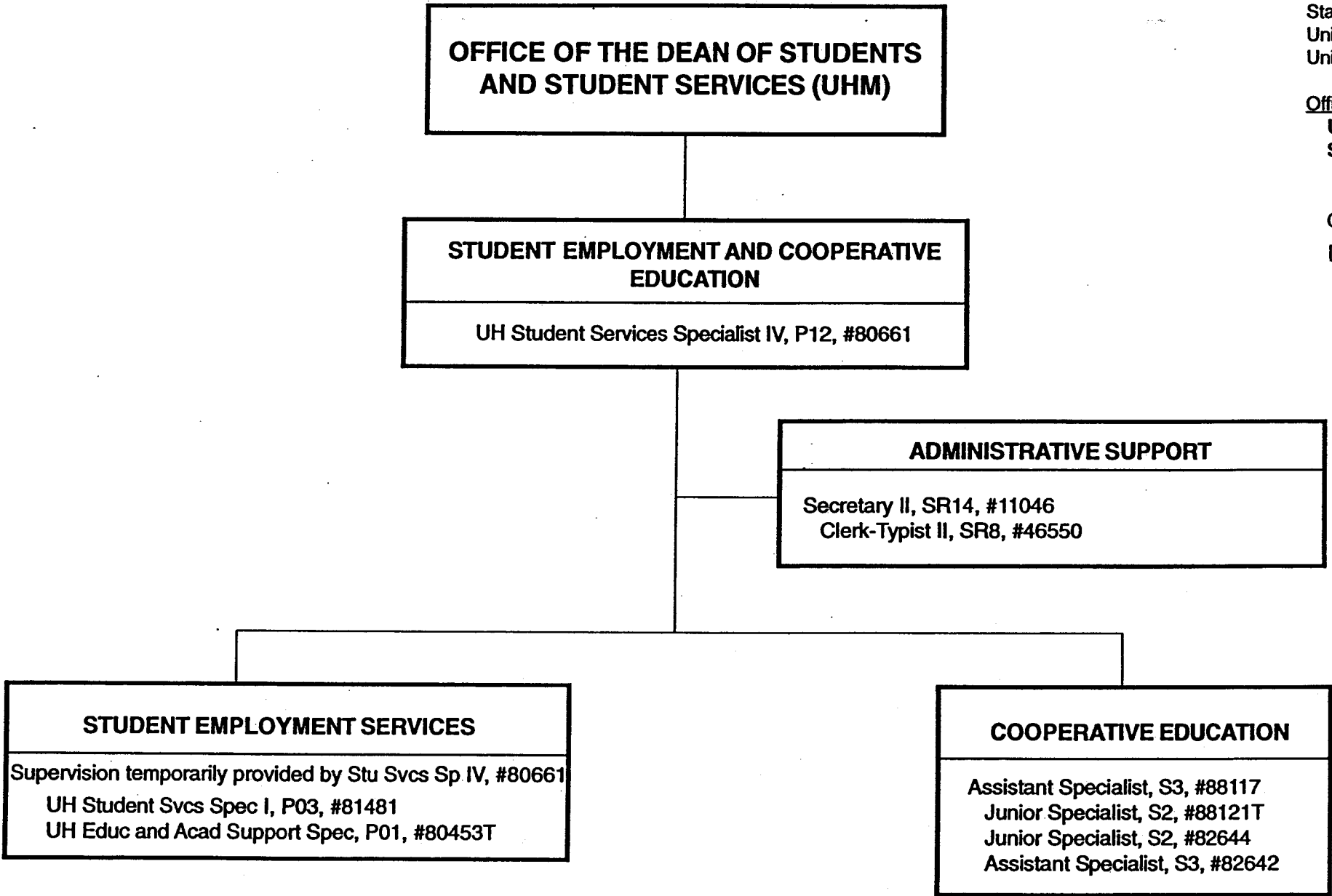


CHART UPDATED
DATE JUL - 1 2001

General Funds 7.00 (perm)
General Funds 2.00 (auth temp)

Office:
UHM Student Services
International Student
Services

Chart: IV-H
[CURRENT]

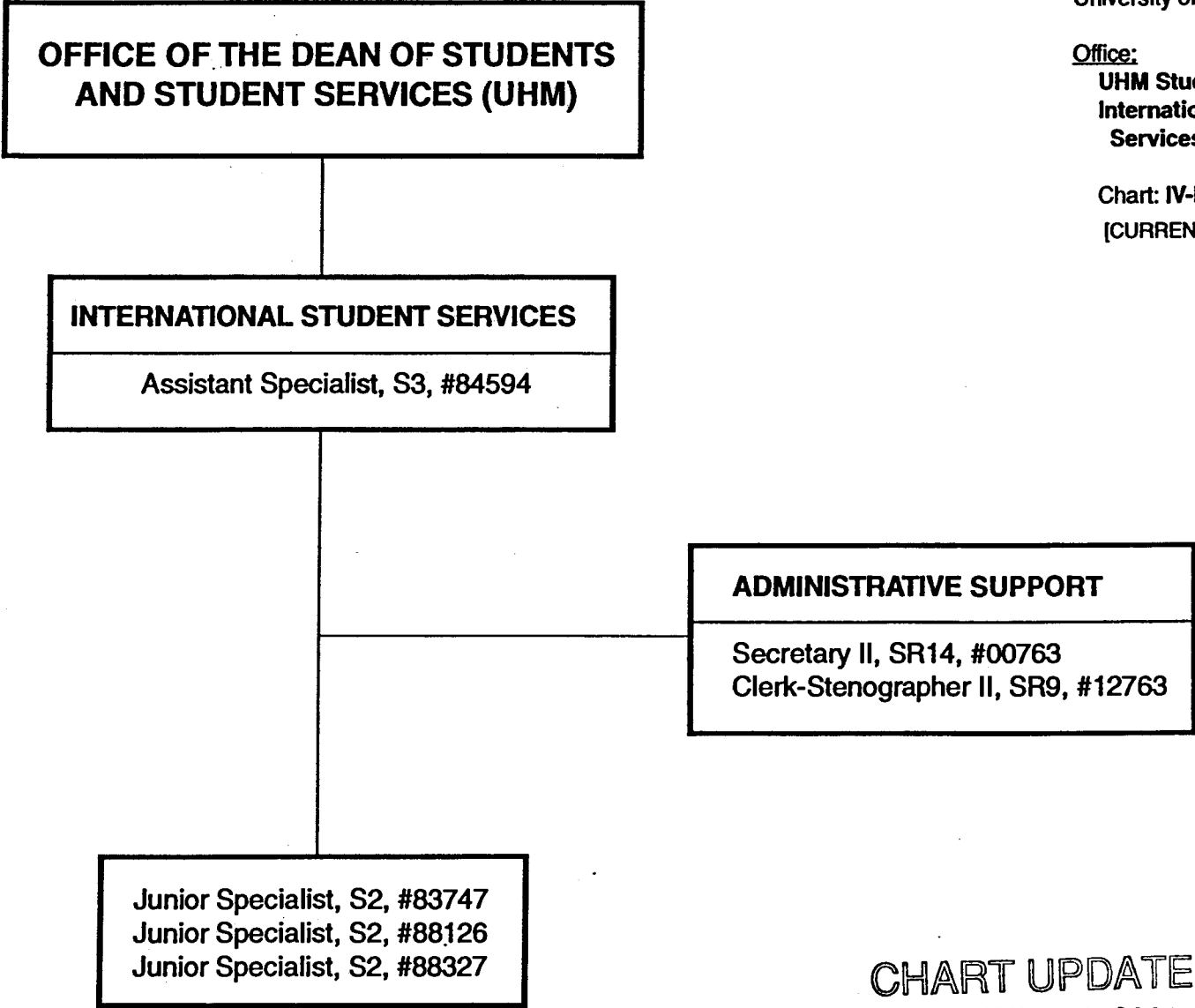


CHART UPDATED

DATE JUL - 1 2001

General Funds 4.00*

*2.00 FTE (#88126, #88327 for Study Abroad
transferred to Academic Affairs)

**OFFICE OF THE DEAN OF STUDENTS
AND STUDENT SERVICES (UHM)**

CAREER SERVICES
Specialist, S5, #83382

ADMINISTRATIVE SUPPORT
Secretary II, SR14, #14337

Junior Specialist, S2, #88125
Assistant Specialist, S3, #83548
Specialist, S5, #88325
Junior Specialist, S2, #88326
UH Student Services Specialist II, P06, #81434

State of Hawai'i
University of Hawai'i
University of Hawai'i at Mānoa

Office:
UHM Student Services
Career Services

Chart: IV-I
[CURRENT]

CHART UPDATED

DATE JUL - 1 2001

Office:
UHM Student Services
Counseling and Student
Development Center

Chart: IV-J
[CURRENT]

**OFFICE OF THE DEAN OF STUDENTS
AND STUDENT SERVICES (UHM)**

**COUNSELING AND STUDENT
DEVELOPMENT CENTER**

Specialist, S5, #83151

ADMINISTRATIVE SUPPORT

Secretary II, SR14, #00746

LEARNING ASSISTANCE

Assistant Specialist, S3, #84554
Assistant Specialist, S3, #88143

TESTING

UH Student Services Specialist II, P06, #80632

COUNSELING

Specialist, S5, #82048 (.50)
Specialist, S5, #83635 (.50)
Associate Specialist, S4, #82698
Associate Specialist, S4, #83114
Associate Specialist, S4, #84139

CHART UPDATED
JUL -1 2001
DATE _____

General Funds

9.00

Office:
UHM Student Services
University Health Services

Chart: IV-K
[CURRENT]

**OFFICE OF THE DEAN OF STUDENTS
AND STUDENT SERVICES (UHM)**

UNIVERSITY HEALTH SERVICES

Specialist, S5, #82341

PHARMACY

UH Pharmacist, P12, #81877 (.25) (R)

ADMINISTRATIVE SUPPORT

Assistant Specialist, S3, #83539
Secretary II, SR14, #15353
Account Clerk III, SR11, #21512
Medical Records Technician VI, SR13, #03723
Clerk-Typist III, SR10, #25410(R)
Clerk-Typist II, SR08, #35147(.50)
Clerk II, #36106*(R)

MEDICAL STAFF

Specialist, S5, #84576 (.50) (R)
Specialist, S5, #84576A (.50) (R)
Specialist, S5, #83261 (.50) (R)
Specialist, S5, #83397 (.50) (R)

NURSING STAFF

Registered Professional Nurse IV, SR22, #10312 (R)
Registered Professional Nurse III, SR20, #13616 (R)
Registered Professional Nurse III, SR20, #22672 (R)
Registered Professional Nurse III, SR20, #13615 (R)
Registered Professional Nurse III, SR20, #18091 (R)

FAMILY PLANNING CLINIC

Registered Professional Nurse V,
SR24, #41706 (R)

LABORATORY

UH Medical Technician, P08, #80671 (.50)

*Pending redescription

CHART UPDATED
JUL - 1 2001
DATE _____

General Funds 6.00
Revolving Funds 10.25

**OFFICE OF THE DIRECTOR OF STUDENT
EQUITY, EXCELLENCE AND DIVERSITY**

COLLEGE OPPORTUNITIES PROGRAM
UH Educational Specialist IV, P12, #80582

ADMINISTRATIVE SUPPORT
Secretary II, SR14, #23086

UH Student Services Specialist II, P06, #80628
UH Student Services Specialist II, P06, #81736 (.50)
UH Student Services Specialist II, P06, #80606

State of Hawai'i
University of Hawai'i
University of Hawai'i at Mānoa

Office:
UHM Student Services
College Opportunities
Program

Chart: IV-L
[CURRENT]

CHART UPDATED
DATE JUL - 1 2001

**OFFICE OF THE DIRECTOR OF STUDENT
EQUITY, EXCELLENCE AND DIVERSITY**

WOMEN'S CENTER

Junior Specialist, S2, #88123T, (.50)
Junior Specialist, S2, #88144T, (.50)

State of Hawai'i
University of Hawai'i
University of Hawai'i at Mānoa

Office:
UHM Student Services
Women's Center

Chart: IV-M
[CURRENT]

CHART UPDATED
DATE JUL -1 2001

Authorized Temporary Positions

General Funds

1.00 (auth temp)

**OFFICE OF THE DEAN OF STUDENTS
AND STUDENT SERVICES (UHM)**

CHILDREN'S CENTER

Specialist, S5, #88318

ADMINISTRATIVE SUPPORT

UH Early Childhood Spec IV, P09, #80232
UH Administrative Officer I, P03, #80739(R)

TEACHING STAFF

UH Early Childhood Spec IV, P09, #80029
UH Early Childhood Spec III, P07, #80109
UH Early Childhood Spec II, P05, #80233
UH Early Childhood Spec III, P07, #80234T
UH Early Childhood Spec II, P05, #80424T
UH Early Childhood Spec III, P07, #80455T
UH Early Childhood Spec III, P07, #80541 (R)
UH Early Childhood Spec II, P05, #80588 (R)
UH Early Childhood Spec II, P05, #80611 (R)
UH Early Childhood Spec IV, P09, #80496T (.75)

State of Hawai'i
University of Hawai'i
University of Hawai'i at Mānoa

Office:

UHM Student Services
Children's Center

Chart: IV-N
[CURRENT]

CHART UPDATED

DATE JUL - 1 2001

General Funds
General Funds
Revolving Funds

5.00 (perm)
3.75 (auth temp)
4.00

**OFFICE OF THE DIRECTOR OF STUDENT
EQUITY, EXCELLENCE AND DIVERSITY**

**CENTER FOR ADULTS
RETURNING TO EDUCATION**

Associate Specialist, S4, #88317

State of Hawai'i
University of Hawai'i
University of Hawai'i at Mānoa

Office:

**UHM Student Services
Center for Adults
Returning to Education**

Chart: IV-O
[CURRENT]

CHART UPDATED
DATE JUL - 1 2001

General Funds

1.00

**OFFICE OF THE DIRECTOR OF STUDENT
EQUITY, EXCELLENCE AND DIVERSITY**

```
graph TD; A[OFFICE OF THE DIRECTOR OF STUDENT EQUITY, EXCELLENCE AND DIVERSITY] --- B[HAWAI'I OPPORTUNITY PROGRAM IN EDUCATION]
```

**HAWAI'I OPPORTUNITY PROGRAM
IN EDUCATION**

State of Hawai'i
University of Hawai'i
University of Hawai'i at Mānoa

Office:
UHM Student Services
Hawai'i Opportunity
Program in Education

Chart: IV-P
[CURRENT]

CHART UPDATED
DATE JUL - 1 2001

**OFFICE OF THE DIRECTOR OF STUDENT
EQUITY, EXCELLENCE AND DIVERSITY**

OPERATION KUA'ANA
UH Educational Specialist III, P09, #81904 UH Student Services Specialist I, P03, #81919

State of Hawai'i
University of Hawai'i
University of Hawai'i at Mānoa

Office:
UHM Student Services
Operation Kua'ana

Chart: IV-Q
[CURRENT]

CHART UPDATED
DATE JUL -1 2001

**OFFICE OF THE DIRECTOR OF STUDENT
EQUITY, EXCELLENCE AND DIVERSITY**

State of Hawai'i
University of Hawai'i
University of Hawai'i at Mānoa

Office:
UHM Student Services
Office of Multicultural
Student Services

Chart: IV-R
[CURRENT]

**OFFICE OF MULTICULTURAL
STUDENT SERVICES**
UH Educational Specialist III, P09, #80517

ADMINISTRATIVE SUPPORT
Clerk-Typist II, SR8, #43052

Associate Specialist, S4, #82281
UH Student Services Specialist I, P03, #81799
UH Student Services Specialist I, P03, #81801

CHART UPDATED
DATE JUL - 1 2001

General Funds

5.00

**OFFICE OF THE DIRECTOR OF STUDENT
EQUITY, EXCELLENCE AND DIVERSITY**

KOKUA PROGRAM

UH Educational Specialist III, P09, #80666

UH Educational Specialist I, P03, #80636

UH Educational Specialist I, P03, #80608

UH Educational Specialist II, P06, #81566

UH Educational Specialist I, P03 #81102

UH Administrative Officer I, PO3, #77032

State of Hawai'i
University of Hawai'i
University of Hawai'i at Mānoa

Office:

UHM Student Services
KOKUA Program

Chart: IV-S
[CURRENT]

CHART UPDATED
JUL - 1 2001
DATE _____

General Funds

6.00