

OFFICE OF UNIVERSITY OF HAWAII AT MANOA  
CHANCELLOR

STATE OF HAWAII  
UNIVERSITY OF HAWAII  
UNIVERSITY OF HAWAII AT MANOA  
COLLEGE OF TROPICAL AGRICULTURE AND HUMAN  
RESOURCES

OFFICE OF THE DEAN\*  
CHART XLI-A

ORGANIZATIONAL CHART  
CHART XLI

OFFICE OF PUBLICATIONS AND INFORMATION  
CHART XLI-B

OFFICE OF ADMINISTRATIVE SERVICES  
CHART XLI-C

OFFICE OF PLANNING AND MANAGEMENT SYSTEMS  
CHART XLI-D

OFFICE OF THE ASSOCIATE DEAN  
FOR ACADEMIC AND  
STUDENT AFFAIRS  
CHART XLI-E

OFFICE OF THE ASSOCIATE DEAN  
AND ASSOCIATE DIRECTOR  
FOR RESEARCH  
CHART XLI-F

OFFICE OF THE ASSOCIATE DEAN  
AND ASSOCIATE DIRECTOR  
FOR COOPERATIVE EXTENSION  
CHART XLI-G

COUNTY ADMINISTRATION  
CHART XLI-Q,R,S,T,U,V,W

EXTENSION PROGRAMS  
CHART XLI-N

FAMILY AND CONSUMER SCIENCES  
CENTER ON THE FAMILY  
4-H OFFICE  
HUMAN NUTRITION, FOOD AND ANIMAL SCIENCES  
MOLECULAR BIOSCIENCES AND BIOSYSTEMS ENGINEERING  
NATURAL RESOURCES & ENVIRONMENTAL MANAGEMENT  
PLANT AND ENVIRONMENTAL PROTECTION SCIENCES  
TROPICAL PLANT & SOIL SCIENCE

CHART XLI-H  
CHART XLI-O  
CHART XLI-P  
CHART XLI-I  
CHART XLI-J  
CHART XLI-K  
CHART XLI-L  
CHART XLI-M

CHART UPDATED  
DATE JUL 20 2001

\* & Director of Research and Cooperative Extension

STATE OF HAWAII  
UNIVERSITY OF HAWAII  
UNIVERSITY OF HAWAII AT MANOA  
COLLEGE OF TROPICAL AGRICULTURE AND HUMAN  
RESOURCES

OFFICE OF THE DEAN  
POSITION ORGANIZATION CHART: XLI-A

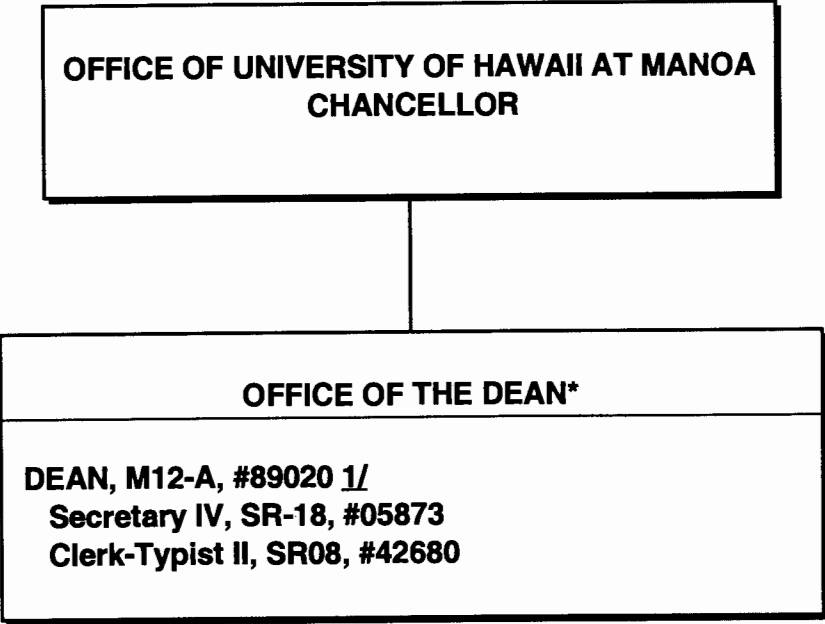


CHART UPDATED  
JUL 20 2001  
DATE \_\_\_\_\_

\*& Director of Research and Cooperative Extension

STATE OF HAWAII  
UNIVERSITY OF HAWAII  
UNIVERSITY OF HAWAII AT MANOA  
COLLEGE OF TROPICAL AGRICULTURE AND HUMAN RESOURCES

OFFICE OF PUBLICATIONS AND INFORMATION  
POSITION ORGANIZATION CHART: XLI-B

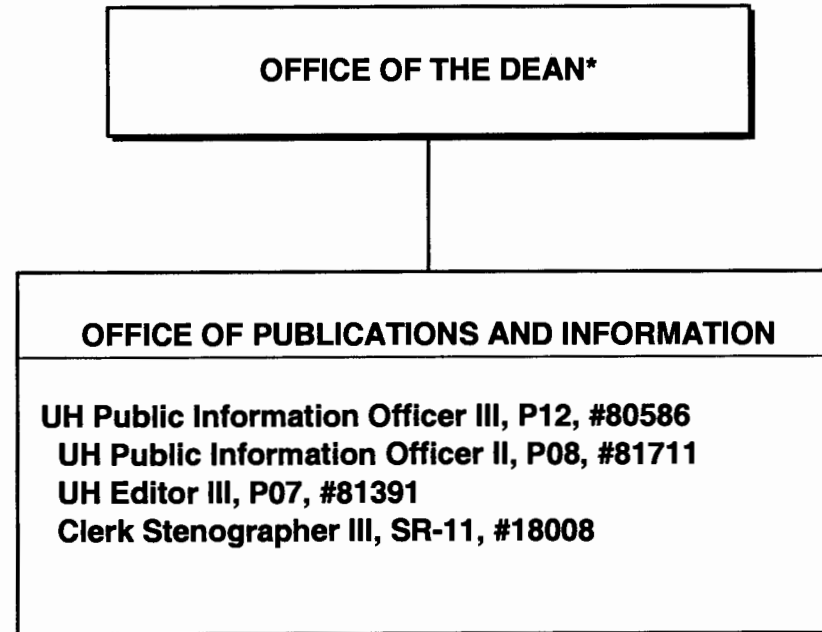


CHART UPDATED  
DATE JUL 20 2001

\*& Director of Research and Cooperative Extension

STATE OF HAWAII  
UNIVERSITY OF HAWAII  
UNIVERSITY OF HAWAII AT MANOA  
COLLEGE OF TROPICAL AGRICULTURE AND HUMAN RESOURCES

OFFICE OF ADMINISTRATIVE SERVICES  
POSITION ORGANIZATION CHART: XLI-C

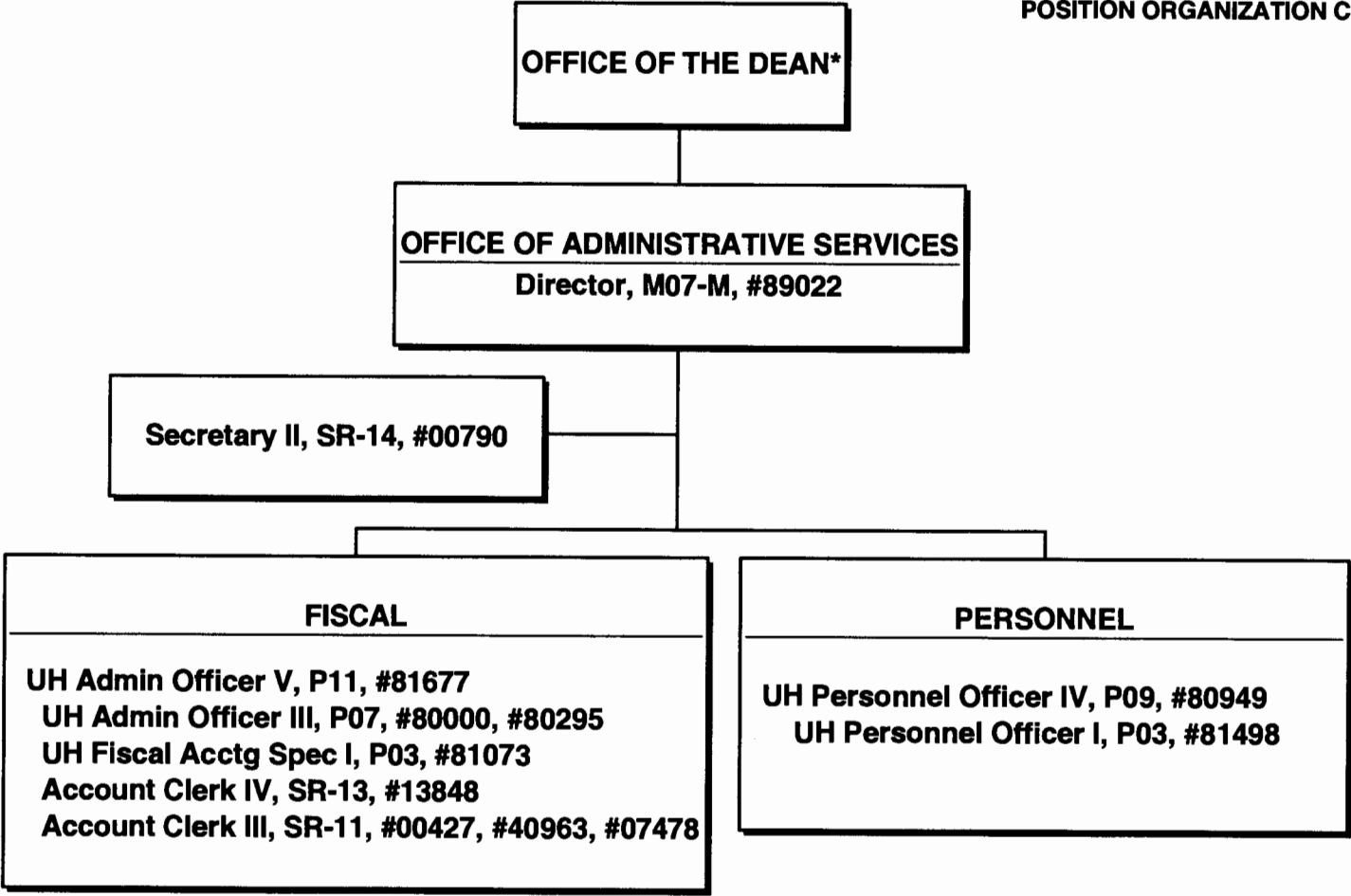


CHART UPDATED  
DATE JUL 20 2001

\*& Director of Research and Cooperative Extension

STATE OF HAWAII  
UNIVERSITY OF HAWAII  
UNIVERSITY OF HAWAII AT MANOA  
COLLEGE OF TROPICAL AGRICULTURE AND HUMAN RESOURCES

OFFICE OF PLANNING AND MANAGEMENT SYSTEMS  
POSITION ORGANIZATION CHART: XLI-D

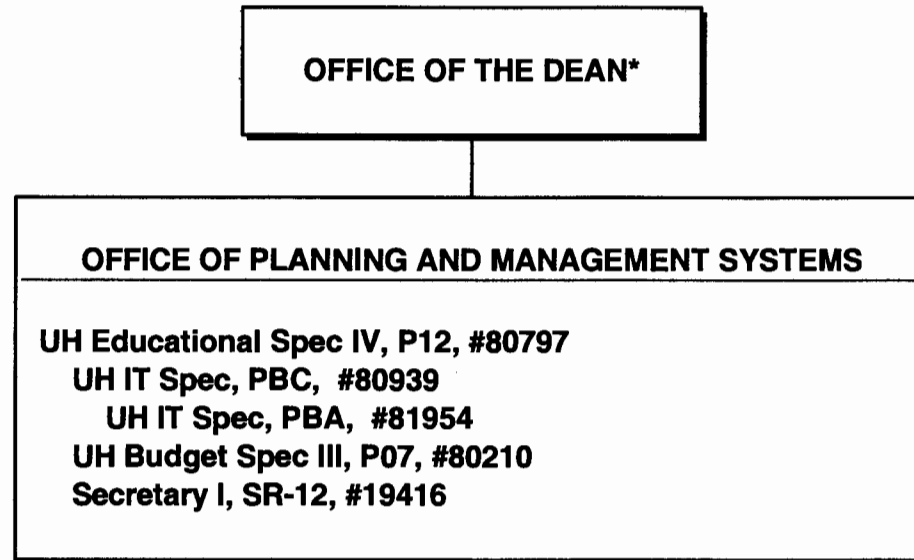


CHART UPDATED  
DATE JUL 20 2001

\* & Director of Research and Cooperative Extension

STATE OF HAWAII  
UNIVERSITY OF HAWAII  
UNIVERSITY OF HAWAII AT MANOA  
COLLEGE OF TROPICAL AGRICULTURE AND HUMAN RESOURCES

OFFICE OF THE ASSOCIATE DEAN FOR ACADEMIC AND STUDENT  
AFFAIRS  
POSITION ORGANIZATION CHART: XLI-E

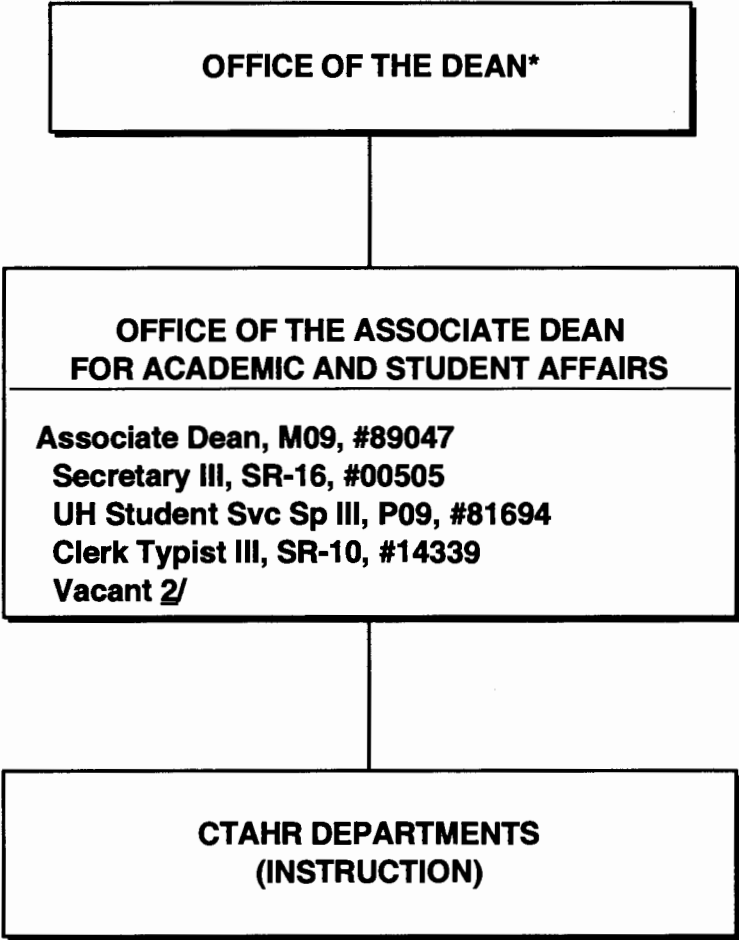


CHART UPDATED  
DATE JUL 20 2001

\* & Director of Research and Cooperative Extension

1/ Position to be redescribed

2/ Vacant Positions in Manoa Pool:

Assoc Researcher, #~~64433~~ (.40)

Clerk Typist II, #45478 (.75)

NOT ON CHART

STATE OF HAWAII  
UNIVERSITY OF HAWAII  
UNIVERSITY OF HAWAII AT MANOA  
COLLEGE OF TROPICAL AGRICULTURE AND HUMAN RESOURCES

OFFICE OF THE ASSOCIATE DEAN AND ASSOCIATE DIRECTOR FOR RESEARCH  
POSITION ORGANIZATION CHART: XLI-F

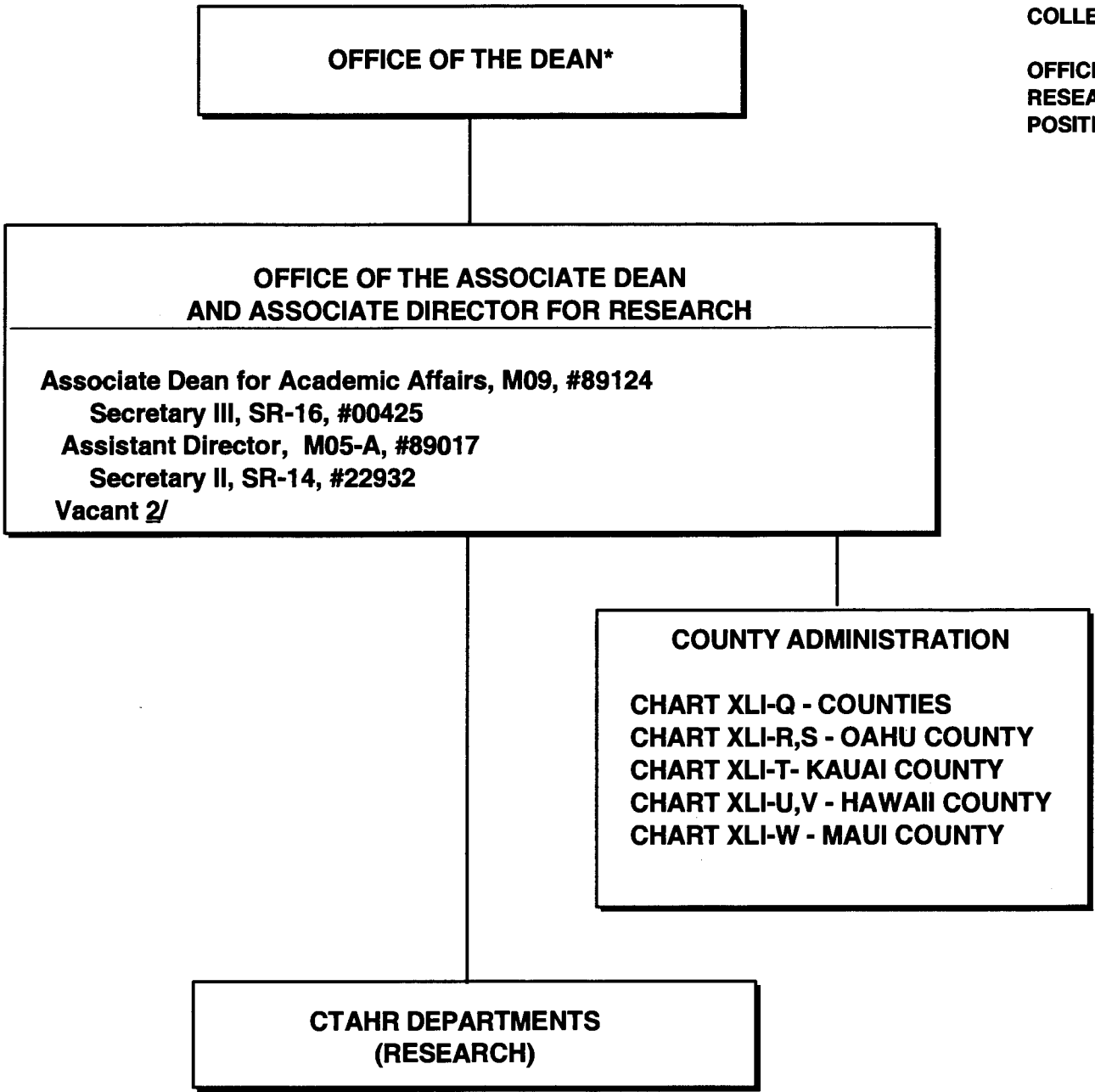
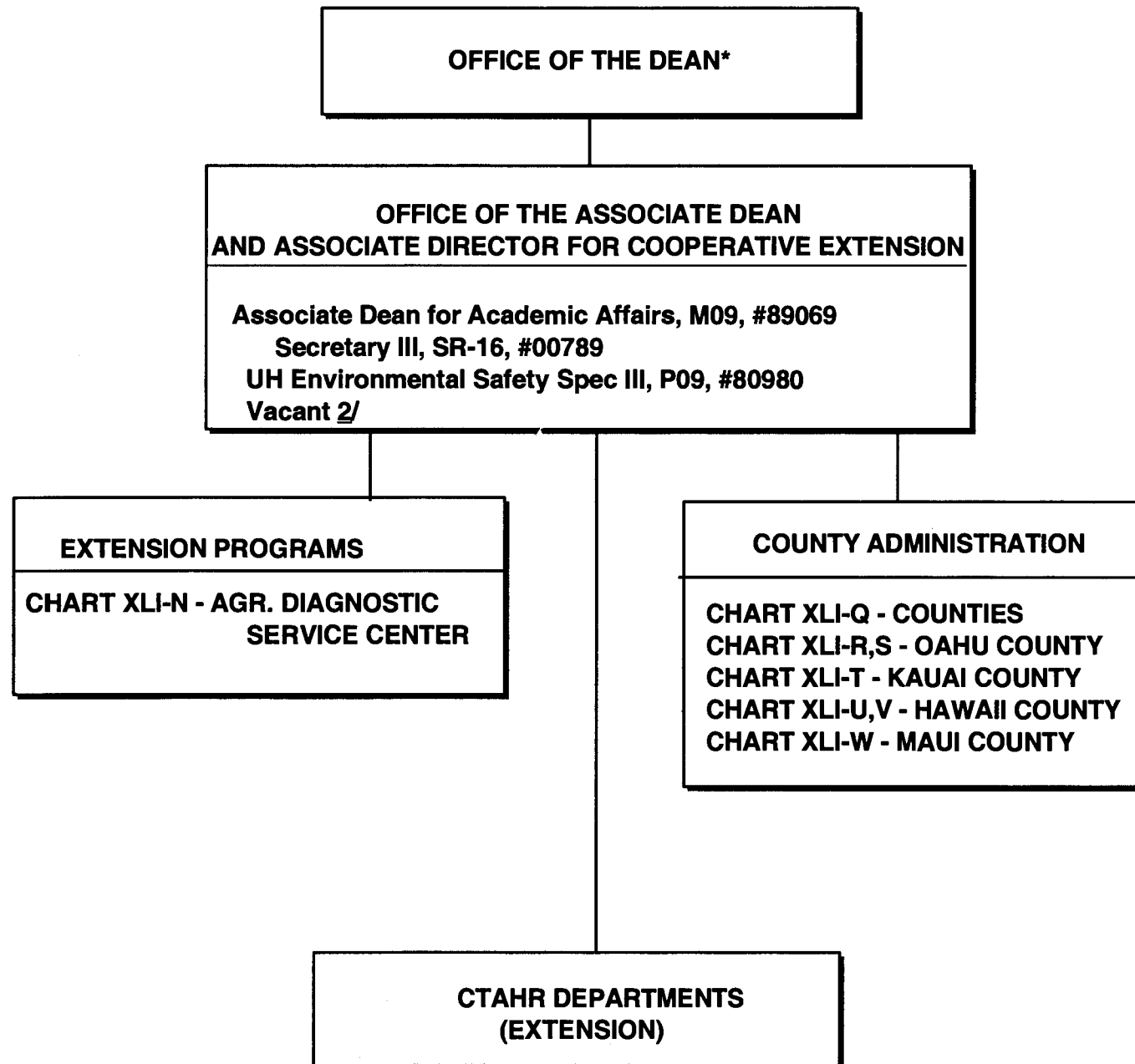


CHART UPDATED  
DATE JUL 20 2001

\* & Director of Research and Cooperative Extension  
1/ Position to be redescribed.  
2/ Vacant Positions in Manoa Pool:  
UH Research Assoc V, #81666  
UH Research Assoc II, #80266 (.60)  
UH Fiscal Acctg Spec II, #81280  
Ag Res Aid II, #00410



STATE OF HAWAII  
UNIVERSITY OF HAWAII  
UNIVERSITY OF HAWAII AT MANOA  
COLLEGE OF TROPICAL AGRICULTURE AND HUMAN RESOURCES

OFFICE OF THE ASSOCIATE DEAN AND ASSOCIATE DIRECTOR  
FOR COOPERATIVE EXTENSION  
POSITION ORGANIZATION CHART: XLI-G

CHART UPDATED  
DATE JUL 20 2001

\* & Director of Research and Cooperative Extension  
1/ Position to be redescribed.  
2/ Vacant Positions in Manoa Pool:  
Assoc Spec, #84912 (.10)  
UH Research Assoc II, #80266 (.40)



**OFFICES OF THE ASSOCIATE DEANS AND DIRECTORS  
FOR ACADEMIC AND STUDENT AFFAIRS,  
RESEARCH, AND COOPERATIVE EXTENSION**

**DEPARTMENT OF FAMILY AND CONSUMER SCIENCES**

**Chairperson (Appointed from among faculty positions)**

**Secretary II, SR-14, #22849**

**Clerk-Steno II, SR-09, #21208**

**Clerk-Typist II, SR-08, #04108**

**Faculty 1/**

**Oahu**

**#82074, #82336, #82392, #82485, #82699, #82869,  
#83220, #83242, #83343, #83525, #83666, #83843 (.40),  
#84070, #84082, #84648, #84662, #84685,  
#84914, #85151, #85421, #85476**

**Hawaii**

**#83267, #84610**

**Kauai**

**#82175, #83816**

**Maui**

**#83728, #84913**

**Graduate Assistant, GA, #88134 (.50), #88241 (.50),  
#88410 (.50), #88576 (.50)**

**STATE OF HAWAII  
UNIVERSITY OF HAWAII  
UNIVERSITY OF HAWAII AT MANOA  
COLLEGE OF TROPICAL AGRICULTURE AND HUMAN RESOURCES**

**DEPARTMENT OF FAMILY AND CONSUMER SCIENCES  
POSITION ORGANIZATION CHART: XLI-H**

**CHART UPDATED  
JUL 20 2001**  
DATE \_\_\_\_\_

**1/ Research FTE: 1.20, Extension FTE: 14.10, Instruction FTE: 12.10**

OFFICES OF THE ASSOCIATE DEANS AND DIRECTORS  
FOR ACADEMIC AND STUDENT AFFAIRS,  
RESEARCH, AND COOPERATIVE EXTENSION

STATE OF HAWAII  
UNIVERSITY OF HAWAII  
UNIVERSITY OF HAWAII AT MANOA  
COLLEGE OF TROPICAL AGRICULTURE AND HUMAN RESOURCES

DEPARTMENT OF HUMAN NUTRITION, FOOD AND ANIMAL  
SCIENCES  
POSITION ORGANIZATION CHART: XLI-I

DEPARTMENT OF HUMAN NUTRITION, FOOD AND ANIMAL SCIENCES

Chairperson (Appointed from among faculty positions)

Secretary II, SR-14, #00400

Clerk-Typist II, SR-08, #12195, #15513, #42682

Faculty 2/

Oahu

#82107, #82248, #82529, #82945, #83017, #83553, #83633, #83742, #83830, #83851 (.50),  
#83862, #84227, #84228, #84323, #84454, #84496, #84512, #84668, #84919  
#84920, #87552

Maui

#84163

Hawaii

#84158, #84276, #84297

Kauai

#82363

UH Research Associate V, P09, #80410

UH IT Spec, PBB, #80037

Graduate Asst, GA-R, #88088 (.50), #88165 (.50), #88303 (.50), #88438 (.50), #88565 (.50)

Agr Research Technician VI, SR-18, #00428

Agr Research Technician V, SR-16, #00395, #00396, #00432, #11024

Agr Research Technician IV, SR-14, #00433

Agr Research Technician III, SR-11, #00418, #00434, #03712

Agr Research Aid II, SR-09, #00441, #04481, #04484, #15515

Lab Assistant III, SR-10, #00707

Equipment Operator III, BC-09, #00419

CHART UPDATED  
DATE JUL 20 2001

1/ Position to be redescribed

2/ Research FTE: 8.15, Extension FTE: 10.25, Instruction FTE: 7.60

STATE OF HAWAII  
UNIVERSITY OF HAWAII  
UNIVERSITY OF HAWAII AT MANOA  
COLLEGE OF TROPICAL AGRICULTURE AND HUMAN RESOURCES

DEPARTMENT OF MOLECULAR BIOSCIENCES AND BIOSYSTEMS  
ENGINEERING  
POSITION ORGANIZATION CHART: XLI-J

OFFICES OF THE ASSOCIATE DEANS AND DIRECTORS  
FOR ACADEMIC AND STUDENT AFFAIRS,  
RESEARCH, AND COOPERATIVE EXTENSION

DEPARTMENT OF MOLECULAR BIOSCIENCES AND BIOSYSTEMS ENGINEERING

Chairperson (Appointed from among faculty positions)

Secretary II, SR-14, #12960, 00402 1/

Clerk Typist II, SR-08, #00803, #14758

Faculty2/

Oahu

#82027, #82094, #82224, #82432, #82848(.50), #82919, #83034, #83184, #83343, #83399, #83682, #83690, #83765,  
#83767, #83882, #83968, #84114, #84193, #84325, #84477, #84600, #84617, #84631, #87523

UH Mechanical Engineer I, P12, #80784

UH Research Associate V, P09, #80323, #80409

UH Research Associate IV, P07, #80324,

UH Research Associate III, P05, #81325

Graduate Assistant, GA-R, #88219 (.50), #88509 (.50), #88630 (.50), #88643 (.50)

Food Processor IV, F109B, #07979

Agr Eqp Dev Wkg Supv, WS-13, #05729

Agr Lab Technician I, BC-12, #05730

CHART UPDATED  
DATE JUL 20 2001

1/ Position to be redescribed

2/ Research FTE: 16.15, Extension FTE: 1.50, Instruction FTE: 4.85

STATE OF HAWAII  
UNIVERSITY OF HAWAII  
UNIVERSITY OF HAWAII AT MANOA  
COLLEGE OF TROPICAL AGRICULTURE AND HUMAN RESOURCES

DEPARTMENT OF NATURAL RESOURCES AND ENVIRONMENTAL  
MANAGEMENT  
POSITION ORGANIZATION CHART: XLI-K

OFFICES OF THE ASSOCIATE DEANS AND DIRECTORS  
FOR ACADEMIC AND STUDENT AFFAIRS,  
RESEARCH, AND COOPERATIVE EXTENSION

DEPARTMENT OF NATURAL RESOURCES AND ENVIRONMENTAL MANAGEMENT

Chairperson (Appointed from among faculty positions)

Secretary II, SR-14, #05838  
Clerk-Steno III, SR-11, #03397  
Clerk Typist II, SR-08, #42681

Faculty <sup>1/</sup>

Oahu

#82058, #82598, #82772, #83012, #83117, #83629, #83824, #84120, #84216,  
#84449, #84488, #84872, #84915

Hawaii

#82373, #83459

Kauai

#82516

UH Educational Spec II, P06, #80391

UH Research Associate III, P05, #80320

Graduate Assistant, GA, #88028 (.50), #88181 (.50), #88431 (.50), #88494 (.50)

Agr Research Technician IV, SR-14, #00398

CHART UPDATED  
DATE JUL 20 2001

<sup>1/</sup> Research FTE: 8.25, Extension FTE: 5.95, Instruction FTE: 1.80

**OFFICES OF THE ASSOCIATE DEANS AND DIRECTORS  
FOR ACADEMIC AND STUDENT AFFAIRS,  
RESEARCH, AND COOPERATIVE EXTENSION**

STATE OF HAWAII  
UNIVERSITY OF HAWAII  
UNIVERSITY OF HAWAII AT MANOA  
COLLEGE OF TROPICAL AGRICULTURE AND HUMAN RESOURCES  
  
DEPARTMENT OF PLANT AND ENVIRONMENTAL PROTECTION  
SCIENCES  
POSITION ORGANIZATION CHART: XLI-L

**DEPARTMENT OF PLANT AND ENVIRONMENTAL PROTECTION SCIENCES**

**Chairperson (Appointed from among faculty positions)**

**Secretary II, SR-14, #07477, 00801 1/**  
**Clerk-Steno III, SR-11, #00794**  
**Clerk-Steno II, SR-09, #15509**

**Faculty 2/**

**Oahu**

**#82047, #82139, #82238, #82505, #82550, #82687, #82865, #82866,  
#82976, #83067, #83320, #83462, #83513, #83770, #83884, #84006,  
#84041, #84138, #84316, #84388, #84911, #85510, #87443**

**Maui**

**#86034, #85530**

**Hawaii**

**#82985, #82722, #83255, #83542, #84910, #85538**

**Kauai**

**#83840, #85505**

**UH Educational Specialist III, P09, #80250**

**UH Research Associate V, P09, #80385, #80388**

**UH Research Associate IV, P07, #80310, #80386, #81178, #81311**

**UH Research Associate III, P05, #81313**

**Graduate Assistant, GA, #88486 (.50), #84932 (.50)**

**Agr Research Technician V, SR-16, #00442**

**Agr Research Technician IV, SR-14, #24270**

**Agr Research Technician III, SR-11, #24269**

**CHART UPDATED**  
**DATE JUL 20 2001**

1/ Position to be redescribed.

2/ Research FTE: 16.10, Extension FTE: 13.90, Instruction FTE: 3.00

OFFICES OF THE ASSOCIATE DEANS AND DIRECTORS  
FOR ACADEMIC AND STUDENT AFFAIRS,  
RESEARCH, AND COOPERATIVE EXTENSION

STATE OF HAWAII  
UNIVERSITY OF HAWAII  
UNIVERSITY OF HAWAII AT MANOA  
COLLEGE OF TROPICAL AGRICULTURE AND HUMAN  
RESOURCES

DEPARTMENT OF TROPICAL PLANT AND SOIL SCIENCE  
POSITION ORGANIZATION CHART: XLI-M

DEPARTMENT OF TROPICAL PLANT AND SOIL SCIENCE

Chairperson (Appointed from among faculty positions)

Secretary II, SR-14, #00793, #07872 1/, #15512 1/

Clerk-Steno III, SR-11, #00399

Faculty 2/

Oahu

#82023, #82181, #82240, #82313, #82464, #82704, #82747,  
#83142, #83260, #83304, #83388, #83682, #83740, #83785,  
#83938, #84067, #84171, #84306, #84321, #84408, #84420,  
#84481, #84501, #84640, #84916, #85555

Maui

#82881, #83848, #84530, #85477, #87584

Hawaii

#83054, #82951, #83073, #83286, #83515, #84354, #85542

Kauai

#82196, #84500

UH Educational Specialist III, P09, #80249

UH Research Associate V, P09, #80270, #80313, #81362

UH Research Associate II, P03, #80311

Graduate Assistant, GA, #88171 (.50), #88423 (.50)

Agr Research Technician V, SR-16, #11019

Agr Research Technician IV, SR-14, #05392, #00397

CHART UPDATED  
DATE JUL 20 2001

1/Position to be redescribed.

2/Research FTE: 16.83, Extension FTE: 16.65, Instruction FTE: 4.52

STATE OF HAWAII  
UNIVERSITY OF HAWAII  
UNIVERSITY OF HAWAII AT MANOA  
COLLEGE OF TROPICAL AGRICULTURE AND HUMAN RESOURCES

AGRICULTURAL DIAGNOSTIC SERVICE CENTER  
POSITION ORGANIZATION CHART: XLI-N

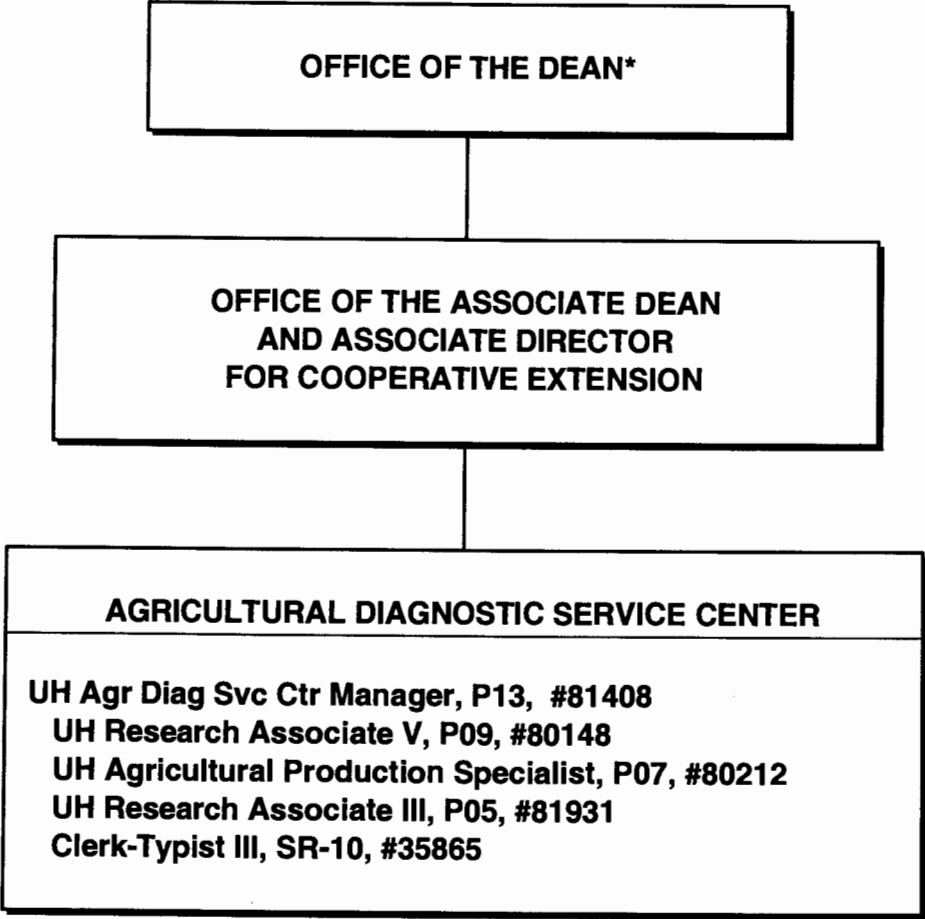


CHART UPDATED  
DATE JUL 20 2001

\*& Director of Research and Cooperative Extension

STATE OF HAWAII  
UNIVERSITY OF HAWAII  
UNIVERSITY OF HAWAII AT MANOA  
COLLEGE OF TROPICAL AGRICULTURE AND HUMAN RESOURCES

CENTER ON THE FAMILY  
POSITION ORGANIZATION CHART: XLI-O

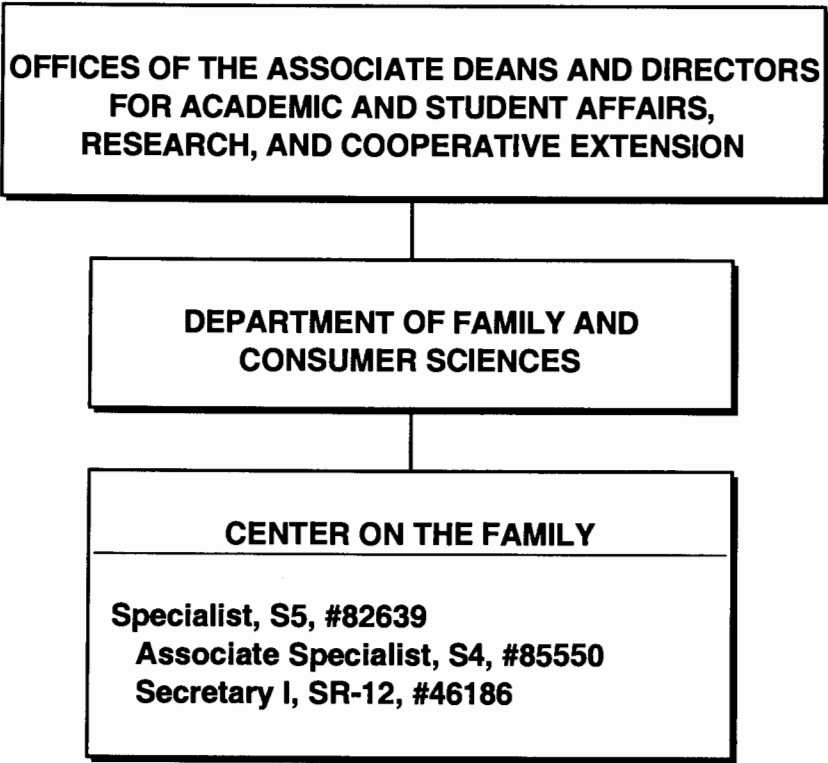


CHART UPDATED  
DATE JUL 20 2001



STATE OF HAWAII  
UNIVERSITY OF HAWAII  
UNIVERSITY OF HAWAII AT MANOA  
COLLEGE OF TROPICAL AGRICULTURE AND HUMAN RESOURCES

4-H OFFICE  
POSITION ORGANIZATION CHART: XLI-P

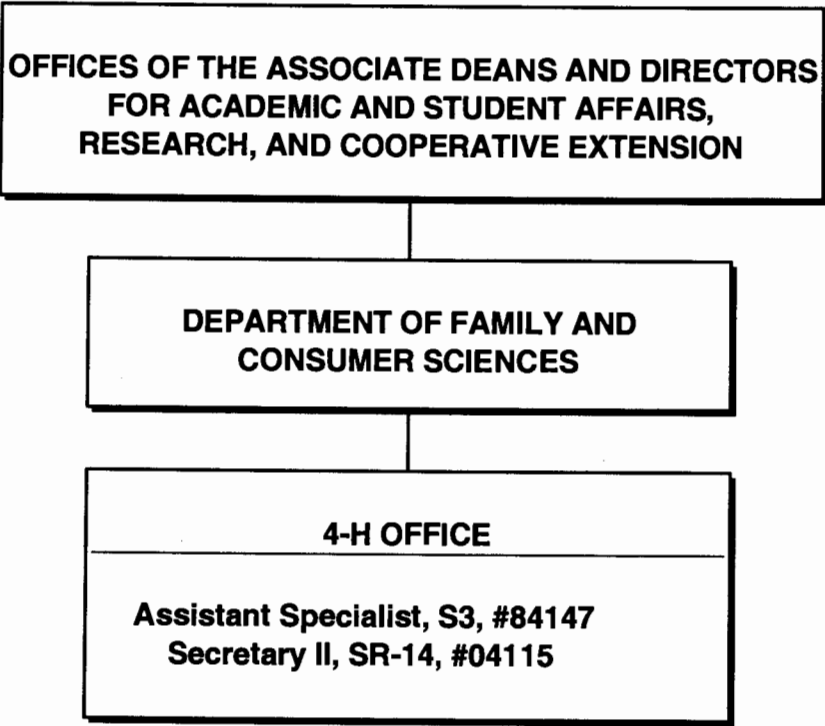


CHART UPDATED  
DATE JUL 20 2001

STATE OF HAWAII  
UNIVERSITY OF HAWAII  
UNIVERSITY OF HAWAII AT MANOA  
COLLEGE OF TROPICAL AGRICULTURE AND HUMAN RESOURCES

COUNTY ADMINISTRATION  
POSITION ORGANIZATION CHART: XLI-Q

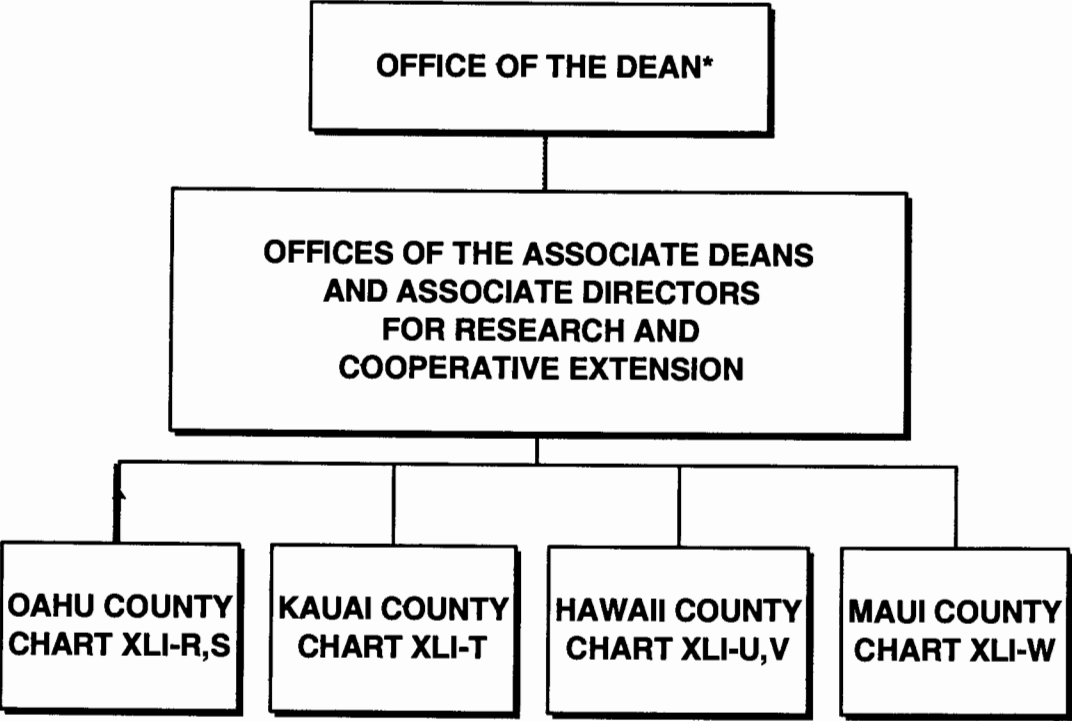


CHART UPDATED  
DATE JUL 20 2001

\*& Director of Cooperative Science & Education

STATE OF HAWAII  
UNIVERSITY OF HAWAII  
UNIVERSITY OF HAWAII AT MANOA  
COLLEGE OF TROPICAL AGRICULTURE AND HUMAN RESOURCES

OAHU COUNTY  
POSITION ORGANIZATION CHART: XLI-R

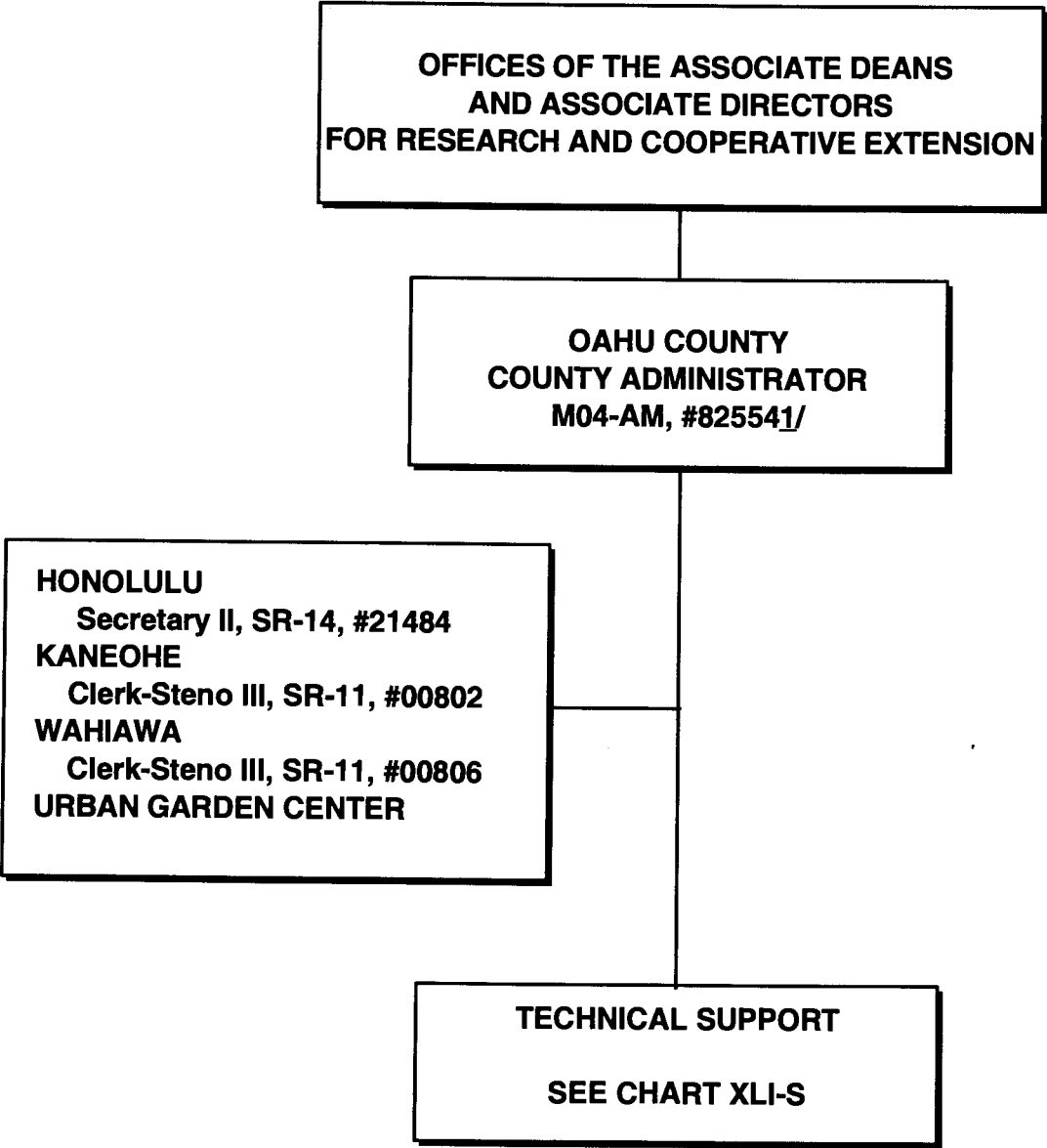


CHART UPDATED  
DATE JUL 20 2001

STATE OF HAWAII  
UNIVERSITY OF HAWAII  
UNIVERSITY OF HAWAII AT MANOA  
COLLEGE OF TROPICAL AGRICULTURE AND HUMAN RESOURCES

OAHU COUNTY - TECHNICAL SUPPORT  
POSITION ORGANIZATION CHART: XLI-S

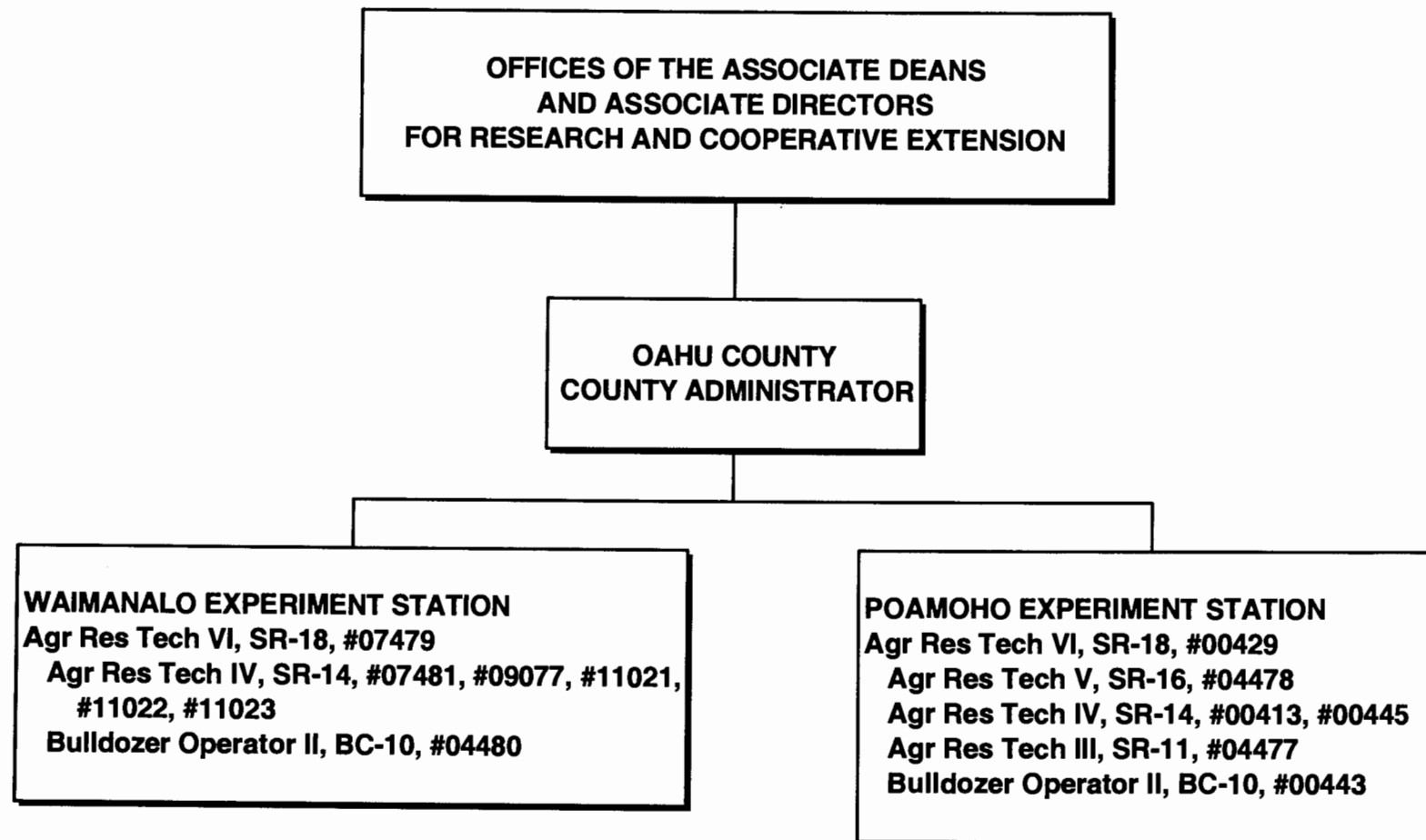


CHART UPDATED  
DATE JUL 20 2001

STATE OF HAWAII  
UNIVERSITY OF HAWAII  
UNIVERSITY OF HAWAII AT MANOA  
COLLEGE OF TROPICAL AGRICULTURE AND HUMAN RESOURCES

KAUAI COUNTY  
POSITION ORGANIZATION CHART: XLI-T

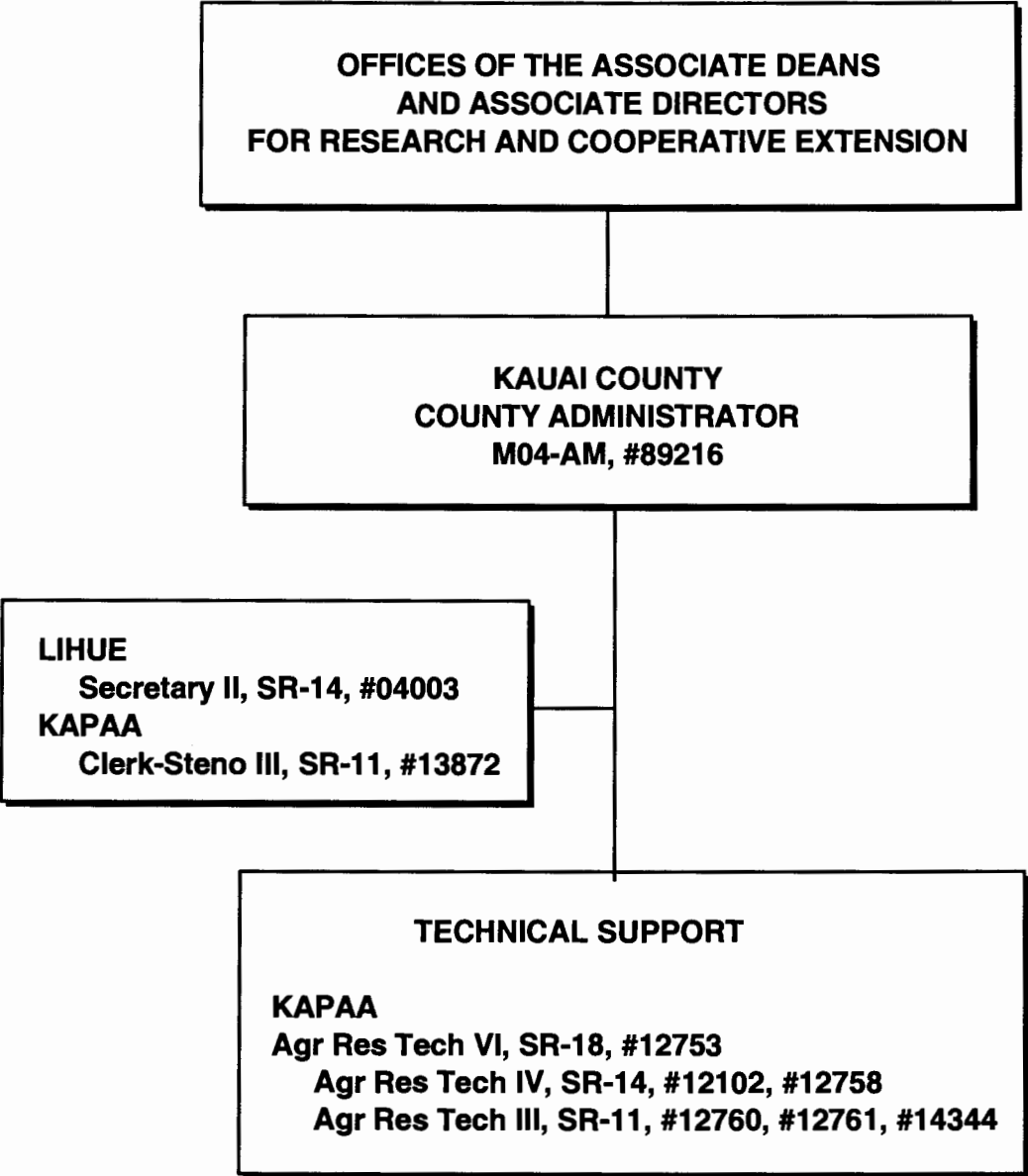


CHART UPDATED  
DATE JUL 20 2001

STATE OF HAWAII  
UNIVERSITY OF HAWAII  
UNIVERSITY OF HAWAII AT MANOA  
COLLEGE OF TROPICAL AGRICULTURE AND HUMAN RESOURCES

HAWAII COUNTY  
POSITION ORGANIZATION CHART: XLI-U

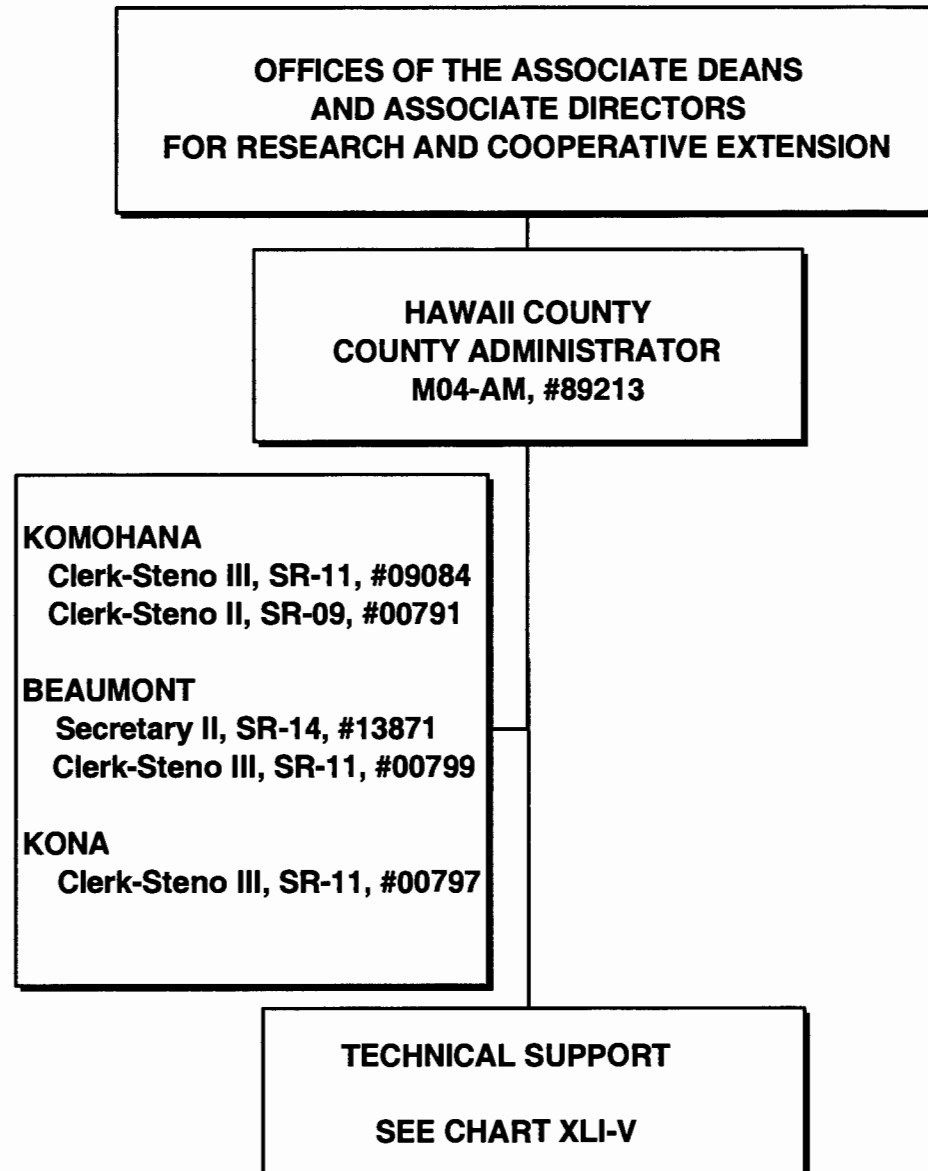


CHART UPDATED  
DATE JUL 20 2001

**OFFICES OF THE ASSOCIATE DEANS  
AND ASSOCIATE DIRECTORS  
FOR RESEARCH AND COOPERATIVE EXTENSION**

**HAWAII COUNTY  
COUNTY ADMINISTRATOR**

<b>WEST HAWAII</b> Agr Res Tech VI, SR-18, #13530	<b>EAST HAWAII</b> Agr Res Tech VI, SR-18, #12099
<b>MEALANI</b> Agr Res Tech V, SR-16, #13534  Agr Res Tech III, SR-11, #13709, #44868, #12100, #44867	<b>WAIAKEA</b> Agr Res Tech V, SR-16, #12101, #12094, #14166  Agr Res Tech III, SR-11, #17602, #12098, #15497 Building Maintenance Worker I, BC-09, #12095
<b>LALAMILO</b> Agr Res Tech V, SR-16, #13535	<b>VOLCANO</b> Agr Res Tech V, SR-16, #13206
<b>HAMAKUA</b> Agr Res Tech III, SR-11, #13536	<b>MALAMA-KI</b>  Agr Res Tech III, SR-11, #12765
<b>KONA</b> Agr Res Tech V, SR-16, #00409 Agr Res Tech IV, SR-14, #22912	

STATE OF HAWAII  
UNIVERSITY OF HAWAII  
UNIVERSITY OF HAWAII AT MANOA  
COLLEGE OF TROPICAL AGRICULTURE AND HUMAN RESOURCES

HAWAII COUNTY - TECHNICAL SUPPORT  
POSITION ORGANIZATION CHART: XLI-V

CHART UPDATED  
DATE JUL 20 2001

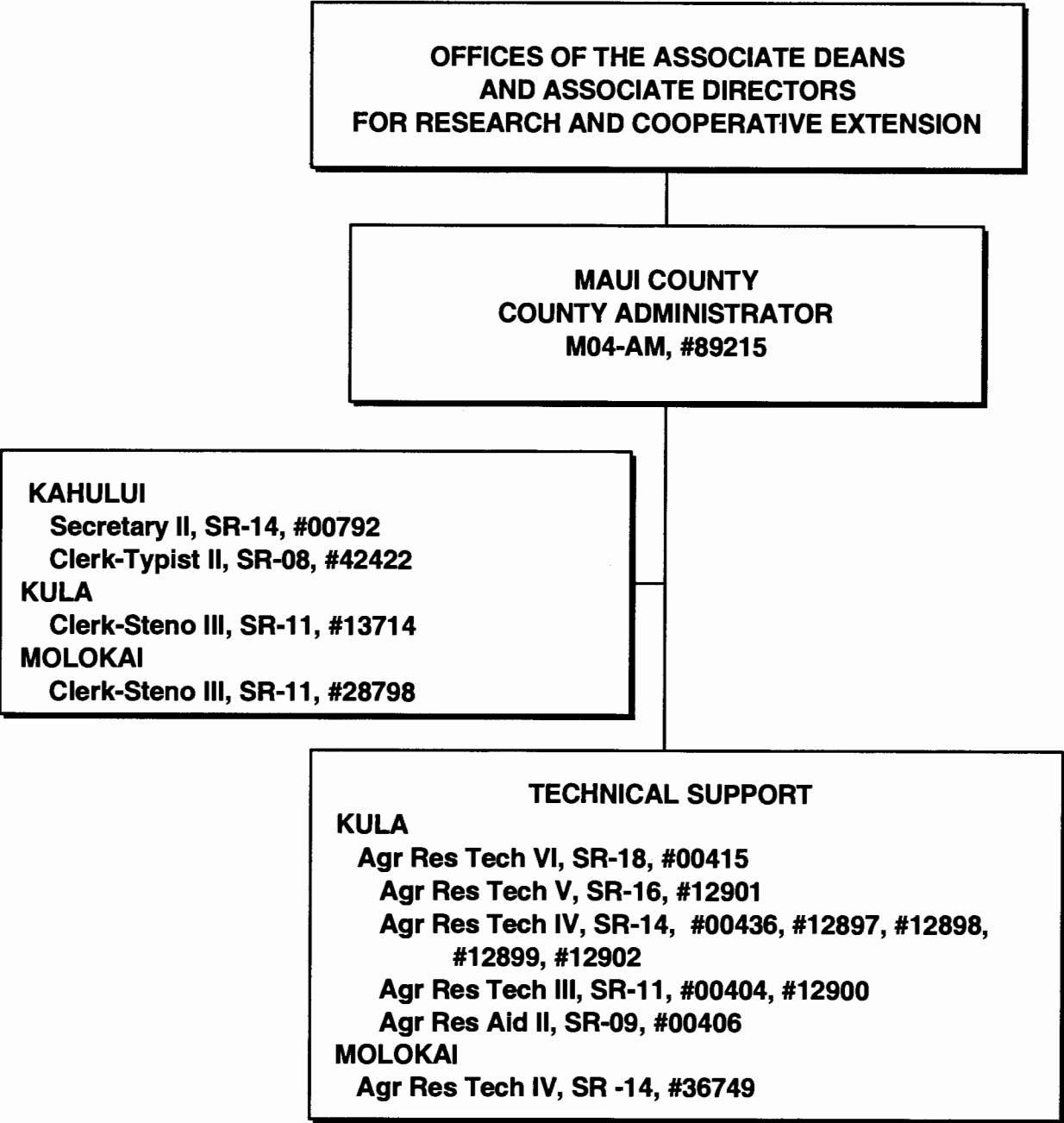


CHART UPDATED  
DATE JUL 20 2001