

UNIVERSITY OF HAWAII

University Budget Office

February 7, 2002

MEMORANDUM

TO: Board Secretary David Iha

FROM: Glenn K. Nakamura 

SUBJECT: NOTIFICATION OF REORGANIZATION FOR THE UH MĀNOA TO
REASSIGN THE MARINE OPTION PROGRAM FROM THE SCHOOL OF
OCEAN AND EARTH SCIENCE AND TECHNOLOGY TO THE COLLEGE
OF NATURAL SCIENCES

Enclosed for the information of the Board or Regents is a copy of a reorganization approved on February 4, 2002 to reassign the Marine Option Program from the School of Ocean and Earth Science and Technology to the College of Natural Sciences. The purpose of this reorganization is explained in the accompanying executive summary and proposal narrative.

If there are any questions regarding this matter please call Interim Vice Chancellor Karl Kim at 956-8447.

Attachment

c: Interim Vice Chancellor Karl Kim (w/o attachment)

UNIV. OF HAWAII
UH BUDGET OFFICE



02 FEB -6 P3:07

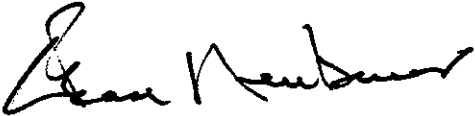
UNIVERSITY OF HAWAII AT MĀNOA

OFFICE OF THE CHANCELLOR

February 5, 2002

MEMORANDUM

TO: The Honorable Mazie K. Hirono
Lieutenant Governor, State of Hawai'i

FROM: Deane Neubauer
Interim Chancellor 

SUBJECT: Notification of Approved Reorganization, University of Hawai'i, School of Ocean and Earth Science and Technology and College of Natural Sciences

Enclosed for your files is a copy of the reorganization which was approved by the University for the School of Ocean and Earth Science and Technology and College of Natural Sciences. The purpose of the reorganization is explained in the accompanying executive summary.

If there are any questions regarding this matter, please call Interim Vice Chancellor Karl Kim at 956-8447.

Enclosure

c: The Honorable Neal Miyahira
Director, Department of Budget and Finance
The Honorable Davis Yogi
Director, Department of Human Resources Development
Director Peggy Hong
Acting Director Glenn Nakamura
Interim Dean Charles Hayes
Dean C. Barry Raleigh

**STATE OF HAWAII
UNIVERSITY OF HAWAII AT MANOA**

OFFICE OF THE CHANCELLOR

**PROPOSAL TO REORGANIZE THE SCHOOL OF OCEAN AND EARTH
SCIENCE AND TECHNOLOGY AND THE COLLEGE OF NATURAL SCIENCES**

EXECUTIVE SUMMARY

The proposed reorganization effects minor changes to the School of Ocean and Earth Science and Technology (SOEST) and the College of Natural Sciences (CNS). Both units have agreed to transfer administrative responsibility for the Marine Option Program (MOP), currently housed in SOEST, to CNS. The Director of MOP will report to the Dean of CNS. The Director's position and half of the salary will be transferred to CNS. CNS will provide the other one-half of the Director's salary.

Students/clients will not be impacted by this reorganization. One position count will be transferred to CNS. No position variances are pending. No new positions will be required as a result of this reorganization; no positions will be reclassified. Certain organizational and functional relationships will be affected. The MOP Director, who now reports to the SOEST Associate Dean, will report to the Dean of CNS. CNS will provide office space for MOP as soon as possible.

The proposed reorganization will enable SOEST to utilize available resources in the most efficient manner and direct them to the highly successful and academically more rigorous Global Environmental Studies undergraduate degree program.

**STATE OF HAWAII
UNIVERSITY OF HAWAII AT MANOA**

OFFICE OF THE CHANCELLOR

**PROPOSAL TO REORGANIZE THE SCHOOL OF OCEAN AND EARTH
SCIENCE AND TECHNOLOGY AND THE COLLEGE OF NATURAL SCIENCES**

A. PRESENT ORGANIZATION

The present administrative structure of the School of Ocean and Earth Science and Technology (SOEST) was approved originally by the Board of Regents (BOR) in 1988. The structure was augmented in 1997 with the creation of the International Pacific Research Center. SOEST currently includes four academic departments – Geology and Geophysics, Meteorology, Ocean and Resources Engineering and Oceanography; four Organized Research Units (ORU) – the Hawaii Institute of Geophysics and Planetology (HIGP), the Hawaii Institute of Marine Biology (HIMB), the Hawaii Natural Energy Institute (HNEI) and the Sea Grant College Program; three federally funded research and education programs, Hawaii Undersea Research Laboratory (HURL), the Joint Institute for Marine and Atmospheric Research (JIMAR) and the Space Grant College Program (housed within HIGP); and a Japan-U.S. collaborative program, the International Pacific Research Center (IPRC).

The Dean of SOEST reports directly to the Chancellor, University of Hawaii at Manoa. The academic departments report to the SOEST Associate Dean for Academic Affairs, as do JIMAR, the Marine Option Program, the SOEST Library and HURL. The Directors of HNEI, HIMB, HIGP and Sea Grant report to the Dean of SOEST. The Director of Administration oversees the operations of the Program and Budget Office, Financial Management Systems and the Personnel Office, and provides administrative oversight for the Analytical Support Facility, the Research Computing Facility, the Engineering Support Facility, the Publications Facility and the University Marine Center/Ship Operations. The Research Divisions shown on Organizational Chart XXXI are interdisciplinary, cross-departmental groups of faculty whose expertise and training interests focus on broad themes.

The Dean of the College of Natural Sciences (CNS) reports to the Chancellor, University of Hawaii at Manoa. Seven academic departments (Botany, Chemistry, Information and Computer Sciences, Mathematics, Microbiology, Physics and Astronomy and Zoology) and the Biology Program currently report to the Dean of CNS.

B. PROPOSED ORGANIZATION

The proposed reorganization will effect the following changes to SOEST/CSN's administrative structure:

1. Removes the Marine Option Program from the SOEST organizational chart and transfers it to the College of Natural Sciences.
2. The Director of MOP will report to the Dean of CNS.

C. BACKGROUND AND NATURE OF THE PROPOSED REORGANIZATION

1. Conditions and Factors Prompting the Reorganization

Background. The Marine Option Program (MOP) is a certificate program open to undergraduate students in all fields of study. The certificate is awarded to students who complete a minimum of 16 credit hours of marine-related coursework and

activities (including field trips, workshops, seminars, symposia, and non-credit courses). Students must complete the MOP Seminar (OEST 100) followed by the MOP Skill Project.

The MOP was approved as a certificate-granting permanent program in 1971. The MOP Director coordinates system-wide program offerings for students on six other campuses: Windward Community College, Maui Community College, Kauai Community College, Honolulu, Community College, Leeward Community College/UH-West Oahu and UH-Hilo. MOP has affiliated faculty and staff at these campuses.

The Manoa MOP program has one FTE position currently occupied by the Director. Originally, extramural funds from the Sea Grant program supported a student adviser, a secretary, and a soft-money administrative officer. Sea Grant provides seed money for marine research, extension and education as part of its mission. By 1988, MOP administrative functions were supported entirely by G-funds. Sea Grant and a variety of small grants from external agencies and private firms provided additional funds for student activities and other functions. At this time, the MOP program receives \$72,700.32 in G-funds for the Director's salary via SOEST and raises about \$10-20,000 in extramural funding. Extramural funding supports student internships and other programmatic activities.

Current enrollment estimates and staff as of June 2001 are as follows:

UH-Manoa (80)

Sherwood Maynard, Director

Hans Van Tilburg, Graduate Assistant until 5/15/2002

UH-Hilo (273)

Walt Dudley and Leon Hallacher, Faculty Co-coordinators

John Coney, Staff Coordinator

Mike Childers, Instructor

Windward CC (30)

Dave Krupp, Acting Faculty Coordinator

Floyd McCoy, Faculty Coordinator (on sabbatical)

Maui CC (45)

Donna Brown, Faculty Coordinator

Leeward CC and UH-West Oahu (35)

Tony Russo, LCC Faculty Coordinator

Lynn Hodgson, UHWO, Liaising Faculty Coordinator

Kauai CC (12)

Nancy Bushnell, Liaising Faculty Coordinator

Honolulu CC (15)

Kakkala Gopalkrishnan, Faculty Coordinator

The faculty coordinators listed are employees of their respective campuses and will not be affected by the reorganization.

2. Details of Proposed Reorganization

- a. The marine-focused, interdisciplinary Manoa MOP undergraduate certificate program and staff will be home-based in the College of Natural Sciences.
- b. MOP Director's position (No. 83579) will be reassigned to College of Natural Sciences; SOEST and CNS will each pay half (\$36,350.16 each) of the MOP Director's salary.

- c. Certain organizational and functional relationships will be affected. MOP, which now reports to the Associate Dean of SOEST, will report to the Dean of Natural Sciences. The reorganization will not impact students or clients.
- d. The proposed reorganization will impact the Associate Dean and the Director of MOP in that lines of reporting within SOEST will be changed. Neither the actual workload nor the level of responsibility of either position is expected to diminish.
- e. MOP currently occupies approximately 2,900 square feet in the Hawaii Institute of Geophysics building. MOP will continue to occupy such space until other space is expected to become available within the CNS.
- f. No additional costs are anticipated at this time. Total funding for the program in Natural Sciences is \$36,350.16

D. REASONS FOR THE PROPOSED REORGANIZATION

1. According to Administrative Procedure A3.101, University of Hawaii Organizational and Functional Changes, dated September 30, 1991, approval of the Chancellor is required for organizational changes that will not result in increased operational costs or that will not impact students or other clientele of the University. Approval of the Board of Regents is required for organizational changes that will result in increased operational costs or that will directly impact students or other clientele of the University. The reorganization will not affect clientele or students. This proposal is submitted in accordance with UH System-wide Administrative Procedure A3.101.
2. Both reviewers and the Dean of SOEST have voiced concerns about the quality of students accepted into the program, the attrition rate, limited appeal to local students, and the overly broad focus of the program. Similar concerns about the completion rates and limited success in attracting local students were raised again in a 1991 program review. The review committee noted that non-science majors have difficulty completing the certificate because the required MOP Skill Project emphasizes field techniques and on-site data collection. Required coursework does not address analysis and statistical treatment of data sufficiently, especially in the area of scientific writing.

Between 1983 and 1988, the Manoa MOP program enrolled 902 undergraduates on four campuses; of those students, 101 completed the certificate requirements. At Manoa over that same five-year period (1983-1988), 422 students entered the program; 62 completed the certificate requirements. Enrollment on the Manoa campus has dropped to about 80 students and the attrition rate has increased.

3. Funding cut-backs make it impossible to address the concerns expressed in D-2. From a funding level of \$121,330 in FY 1988, the G-funded portion of the MOP budget has been reduced to \$72,700.32.

In addition, SOEST recently undertook development of an undergraduate degree program in Global Environmental Science using start-up funding from the Pauley Foundation and existing SOEST personnel in response to numerous requests from the Legislature and UH students. The GES program provides undergraduates at the University of Hawaii the opportunity to earn a Bachelor of Science degree studying the Earth as a system that includes land, oceans, atmosphere and biosphere, in an integrated and rigorously scientific manner. The program has been enormously successful by all measures. The 4-year probational period for that program has ended and SOEST has pending a BOR request to make the program permanent. The Pauley Foundation funding expired in 2001 and SOEST intends to redirect the funding for MOP to this highly successful and more rigorous degree program.

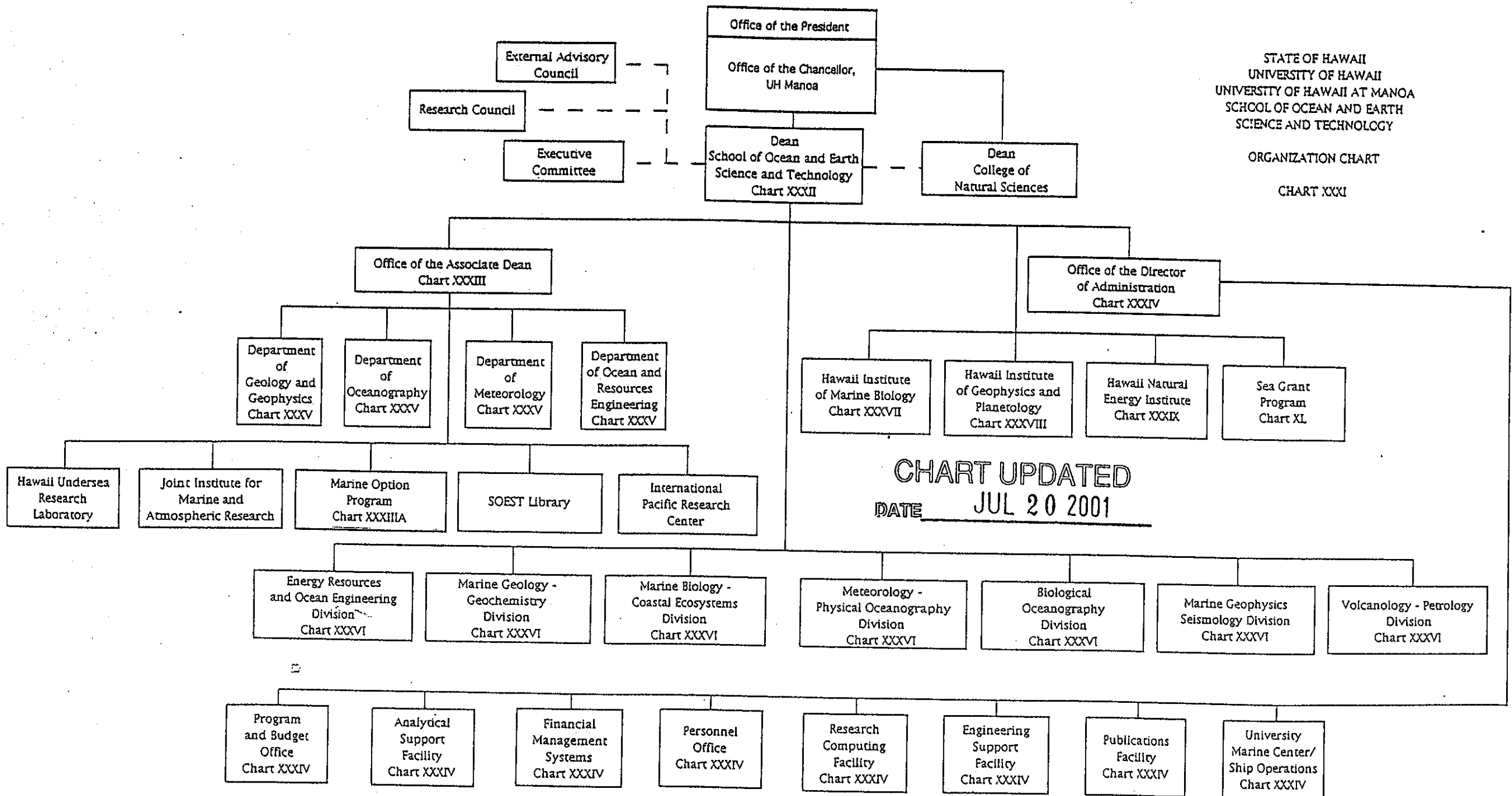
The program proposal, as put forward to the BOR, contained the stipulation that if the program attracts large enough numbers of students during the first four years, it will become necessary to allocate additional general-fund resources. No additional resources have been forthcoming, thus SOEST must redirect funds from the certificate program to the Bachelor of Science program.

4. One of the State of Hawaii's priorities is the transformation from an economy largely reliant on agriculture and tourism to a high-tech, globally competitive economy. The University is often cited as key to this transformation. Through the integration of science, education and outreach programs, SOEST has the potential to make significant contributions to the University's efforts. In particular, the Global environmental Studies baccalaureate program has the potential to make significant contributions in the area of marine-focused and environmental studies, much more so than the MOP undergraduate certificate program.
5. Securing an appropriate long-term administrative and physical location for MOP. Students currently enrolled in the MOP program come from many different schools and colleges, but primarily College of Natural Sciences. CNS is, therefore, a more appropriate location for the program.

E. OTHER ALTERNATIVES CONSIDERED

1. Enrollment in the undergraduate certificate program has held steady on the Hilo campus, and the program has been expanded to Leeward, Kauai, and Honolulu Community Colleges. Manoa now has an undergraduate degree program in environmental studies. For those reasons, other considerations were to administratively and physically move the program to the University of Hawaii at Hilo or transfer it to the community colleges. The Chancellor of UH-Hilo offered financial support and space, however, the MOP Director declined the offer. Negotiations with the Chancellor of the Community Colleges were not fruitful.
2. No other alternatives were considered.

PREVIOUS ORGANIZATIONAL CHARTS
AND
FUNCTIONAL STATEMENTS
FOR SOEST



STATE OF HAWAII
UNIVERSITY OF HAWAII
UNIVERSITY OF HAWAII AT MANOA
SCHOOL OF OCEAN AND EARTH
SCIENCE AND TECHNOLOGY

OFFICE OF THE ASSOCIATE DEAN
FOR ACADEMIC AFFAIRS
POSITION ORGANIZATION CHART

CHART XXXIII

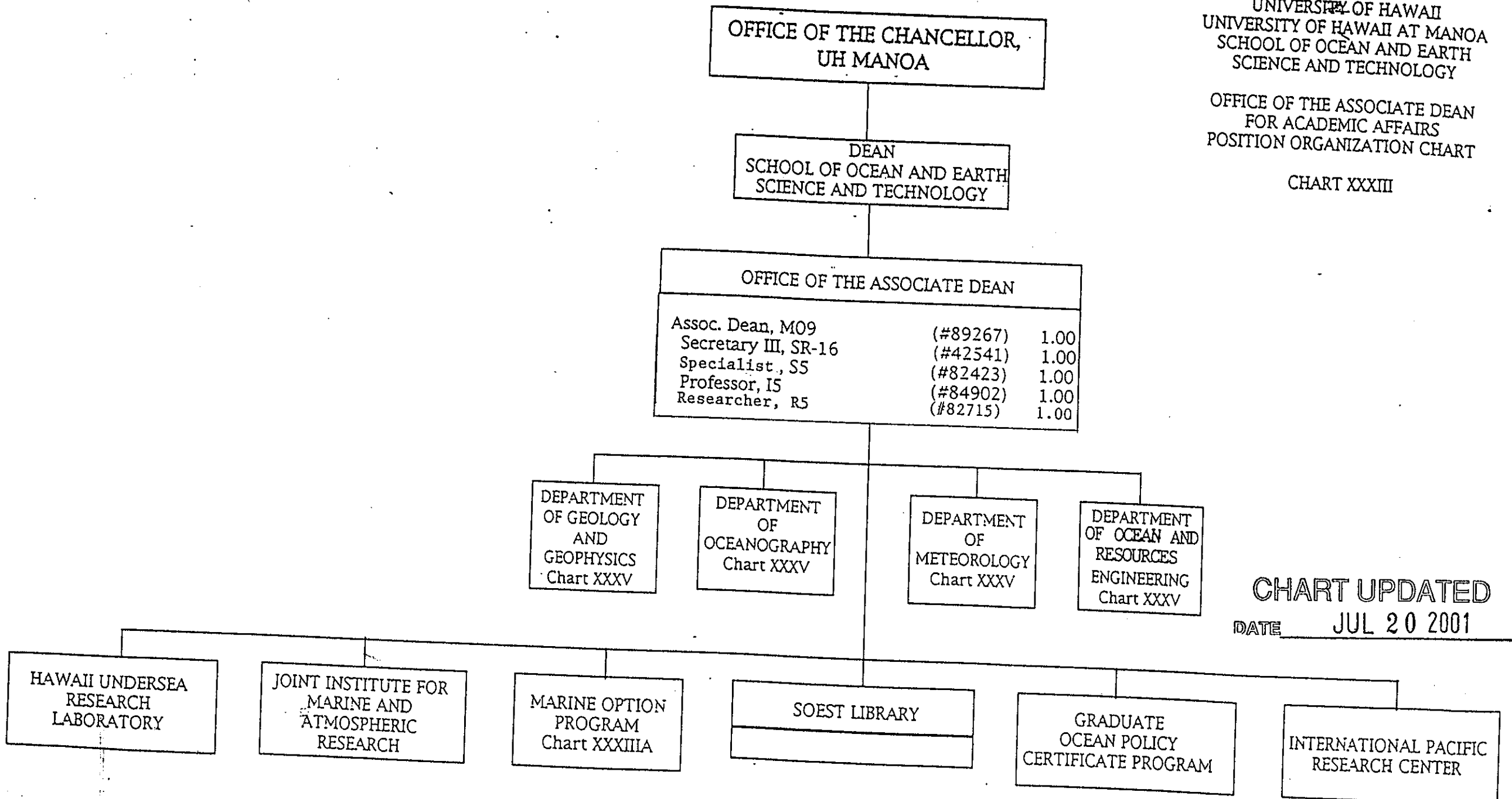


CHART UPDATED
DATE JUL 20 2001

STATE OF HAWAII
UNIVERSITY OF HAWAII
UNIVERSITY OF HAWAII AT MANOA
SCHOOL OF OCEAN AND EARTH
SCIENCE AND TECHNOLOGY

MARINE OPTION PROGRAM
POSITION ORGANIZATION CHART

CHART XXXIII

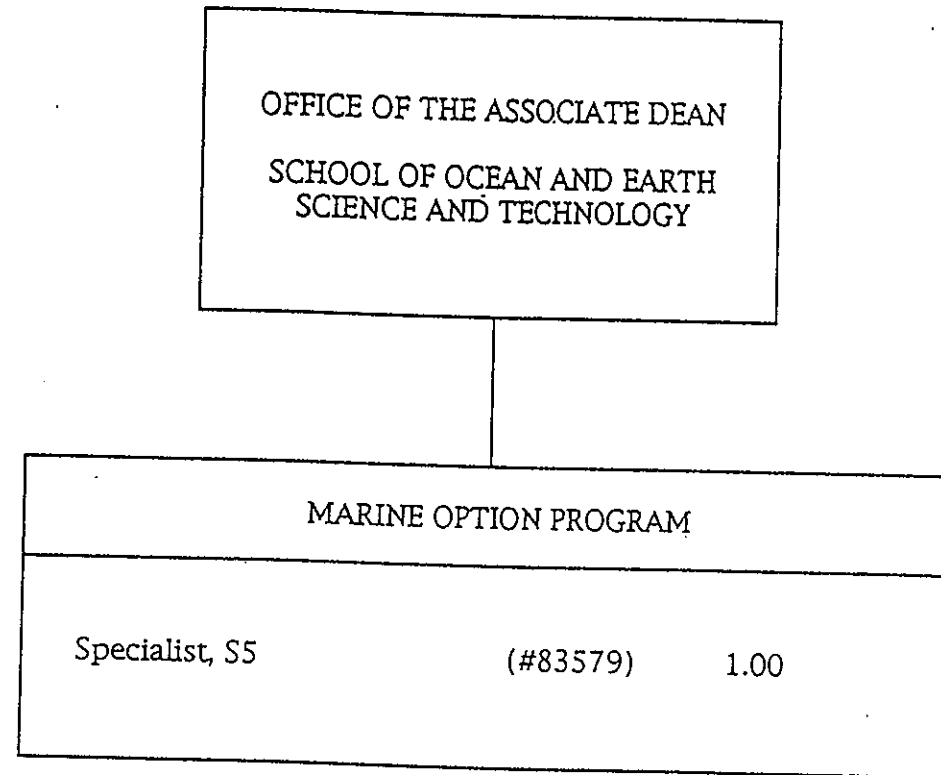


CHART UPDATED
DATE JUL 20 2001

STATE OF HAWAII
UNIVERSITY OF HAWAII

UNIVERSITY OF HAWAII AT MANOA
SCHOOL OF OCEAN AND EARTH SCIENCE AND
TECHNOLOGY

APPENDIX I

SCHOOL OF OCEAN AND EARTH SCIENCE AND TECHNOLOGY
FUNCTIONAL STATEMENTS

OFFICE OF THE DEAN

The Office of the Dean plans and directs the programs of the School of Ocean and Earth Science and Technology, provides the focus of leadership and direction for the marine sciences, and fosters an environment supportive of excellent research and education. It provides executive leadership in planning, policy formulation and implementation, program development and direction, and budget development and execution. In addition, it will coordinate, focus and facilitate the ongoing activities of the individual organizational units, including curricular, personnel and budget affairs of the School and the ancillary support components such as staff supervision and community relations, and represents the School nationally and internationally.

The Dean serves under the Chancellor of the University of Hawaii at Manoa and will be the primary spokesperson for all activities of the School, and functions with authority as delegated by the President.

The principal functions of the Dean's office including the following:

Provides liaison between the School and the Chancellor of the University of Hawaii at Manoa, the University Administration, the Director of the Research Corporation of the University of Hawaii (RCUH), and represents the School at the State, National and International levels.

Approves all appointments, proposals, tenure and promotion actions, salaries, etc. for all components of the School.

Establishes, directs and maintains the SOEST annual expenditure plan and budget requirements for ensuing years in conjunction with the Manoa Chancellor's Office and the UH Manoa Budget Office.

Chairs the SOEST Research Council and Executive Committee.

Provides direction to the school research effort, the graduate, undergraduate and research components of the School and serves in an ex-officio capacity on SOEST special committees as appropriate.

Provides policy guidance and reviews and evaluates SOEST programs.

STATE OF HAWAII
UNIVERSITY OF HAWAII

UNIVERSITY OF HAWAII AT MANOA
SCHOOL OF OCEAN AND EARTH SCIENCE AND
TECHNOLOGY

ASSISTANT TO THE DEAN

This office provides assistance to the Dean and Associate Dean in all aspects of SOEST operations. The principal functions of this office include the following:

Assures coordination of the Dean's administrative affairs.

Provides liaison and coordination for legislative matters.

Assists in SOEST Public Information and Relations affairs.

Provides recording and logistical support of Executive Committee, and Research Council, and other meetings as assigned.

Prepares reports and other correspondence as required.

Conducts special projects as assigned.

SECRETARY TO THE DEAN

This position functions as an executive Secretary to the Dean, providing secretarial services through maintenance of the Dean's calendar, managing and booking his/her travel, and provides administrative and office management services which include the following:

Distribution of mail and correspondence to all school units.

Supervision of secretarial and clerical help within the Dean's office.

Provides office management and telephone services to the Dean and his staff.

Assures maintenance of the Dean's files.

Coordinates the Dean's correspondence.

Facilitates communications between the Offices of the Dean, Associate Dean and the Director of Administration.

OFFICE OF THE ASSOCIATE DEAN

Under the policies and guidelines approved by the Dean, this office is primarily responsible for providing the central focus and accommodating the needs of the instructional components of the School.

Among the instructional programs under the Associate Dean are four academic departments: Geology and Geophysics; Meteorology; Oceanography; and Ocean and Resources Engineering; as well as the Marine Option Program, a certificate program to undergraduates with marine interests, the Hawaii Undersea Research Program, the Joint Institute for Marine and Atmospheric Research, and the Graduate Ocean Policy Certificate Program. In providing an overview for these functions, the Associate Dean is responsible for:

STATE OF HAWAII
UNIVERSITY OF HAWAII

UNIVERSITY OF HAWAII AT MANOA
SCHOOL OF OCEAN AND EARTH SCIENCE AND
TECHNOLOGY

Faculty Development

Oversees SOEST faculty in the instructional and supervisory roles; academic recruiting; development of programs to attract excellent graduate and undergraduate students to SOEST Departments.

Curriculum Development

Maintains an overview of all SOEST instructional program needs, including curriculum development, establishing innovative educational programs, evaluation of course proposals, course schedules, and student advisement.

Academic Program Review

The Associate Dean is responsible for identifying new educational directions, and methodologies, development of new educational programs, advising the Dean on academic matters relating to SOEST research programs, and Federal and State relations.

Program Administration, Planning, Representation and Consultation with Dean

Continuing interaction is maintained to ensure that the Dean and the Associate Dean each remain aware of problems and opportunities concerning the School's academic program and operations. The Associate Dean is also responsible for administration of the SOEST Marine Option Program and the SOEST Library.

The Associate Dean represents SOEST on educational matters at the state, national and international levels, as appropriate and represents the Dean on educational matters to the offices of the Chancellor, the Vice Chancellor, the Dean of Natural Sciences, the Dean of Engineering, and other appropriate units within the University.

Other responsibilities as required by the Dean shall be fulfilled by the Associate Dean. These may include such matters as public relations, fund raising, budgeting, planning, and inter-national cooperative programs of the School.

Library

The principal function of this unit is to provide specialized scientific and technical library services to SOEST faculty members and students. In conjunction with instructional and research staff, periodicals and books necessary for teaching and research are acquired and maintained. The Library contains over 1600 linear feet of library material. The SOEST Librarian reports directly to the Associate Dean.

Marine Option Program

The Marine Option Program, headed by its Director, who reports to the Associate Dean, SOEST, offers undergraduates of all majors throughout the University system the opportunity to discover and develop their marine and marine-related interests and talents. The office is responsible for the development and management of one certificate-granting program offered at all UH campuses, including the community colleges, for those students who

STATE OF HAWAII
UNIVERSITY OF HAWAII

UNIVERSITY OF HAWAII AT MANOA
SCHOOL OF OCEAN AND EARTH SCIENCE AND
TECHNOLOGY

elect to complete selected academic requirements and a practical project. Administrative and advising support is provided for the Graduate Ocean Policy Certificate Program, as described below. In addition, the office sponsors newsletters, seminars, symposia, field trips, workshops, baseline surveys and other hands-on experiences designed to promote marine education and training. Academic and career guidance is provided to current and prospective students.

Graduate Ocean Policy Certificate Program

The wise use and careful stewardship of the ocean require people with multidisciplinary and interdisciplinary advanced education in the natural and social sciences. This graduate certificate program is designed for classified graduate students and community professional practitioners who wish to complement their existing degree of curriculum. An advisory committee assists each student in custom-designing an 18-credit program that draws on marine-related courses in law geography, political science, economics, oceanography, or ocean engineering. In addition, an interdisciplinary seminar and two practice (one in a natural science and one in a social science) are required.

JOINT PROGRAMS

Joint Institute for Marine and Atmospheric Research (JIMAR) – jointly sponsored by the University of Hawaii and the National Oceanic and Atmospheric Administration, JIMAR pursues research involving both theoretical and observational studies on climate, equatorial oceanography, and tsunamis.

Hawaii Undersea Research Laboratory (HURL) – established by a cooperative agreement between the National Oceanic and Atmospheric Administration (NOAA) and the University of Hawaii, HURL primarily supports research projects that require data acquisition at depths greater than scuba limits and concentrates its research efforts using submersibles in these areas; fisheries; pollution; sea floor properties and processes; and ocean technology and services.

International Pacific Research Center (IPRC)
Sponsored by the University of Hawai'i, the National Oceanic and Atmospheric Administration, the National Aeronautics and Space Administration, the National Science Foundation, the U.S. Department of Energy, the Japan Marine Science and Technology Center, and the (Japan) National Space Development Agency, IPRC pursues research on the nature and predictability of climate variability and regional aspects of global environmental change in the Asia-Pacific region.

DEPARTMENTS

**PREVIOUS ORGANIZATIONAL CHARTS
AND
FUNCTIONAL STATEMENTS
FOR CNS**

STATE OF HAWAII

UNIVERSITY OF HAWAII
UNIVERSITY OF HAWAII AT MANOA
COLLEGE OF ARTS AND SCIENCES
COLLEGE OF NATURAL SCIENCES

ORGANIZATION CHART
CHART I

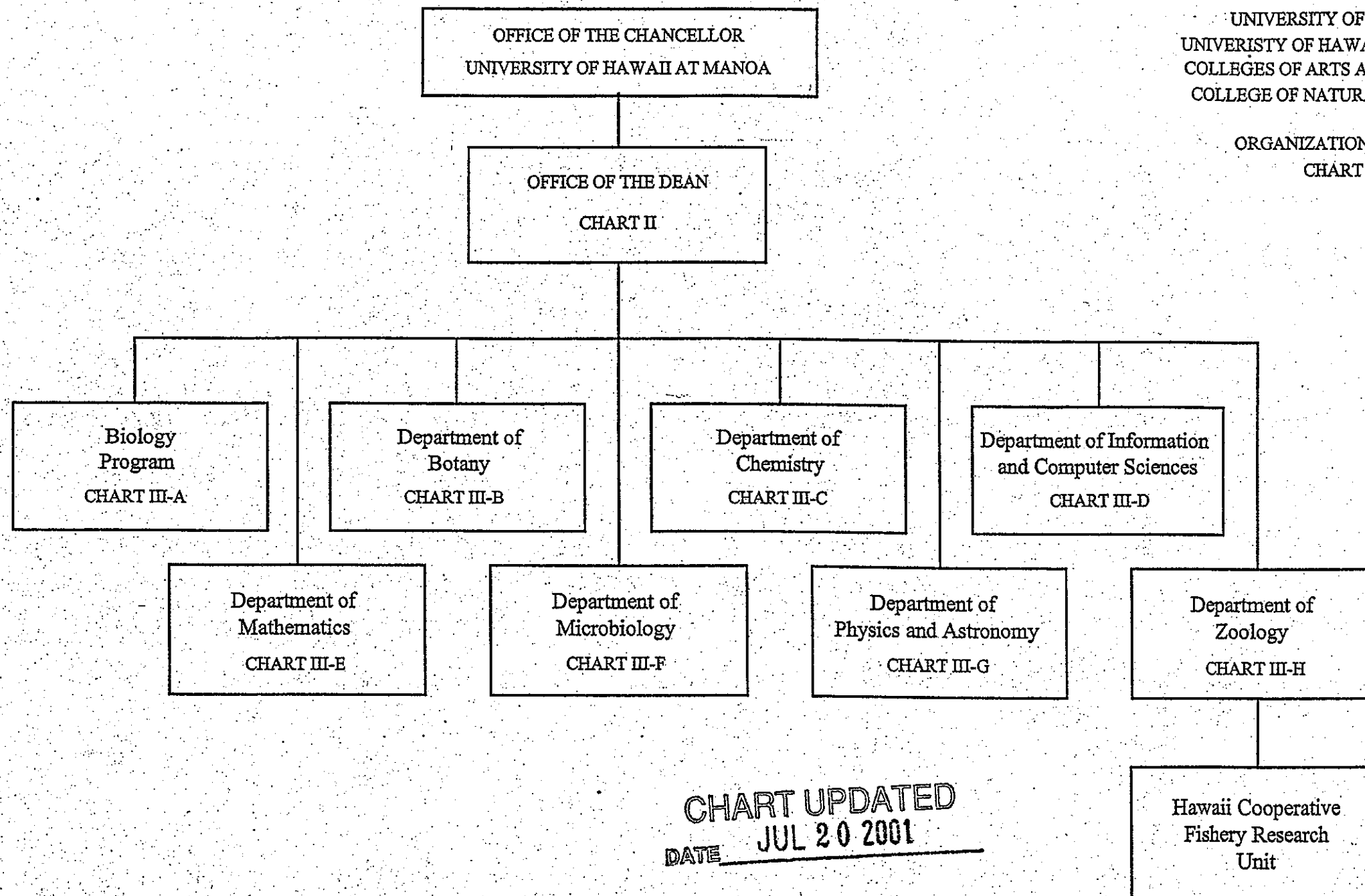


CHART UPDATED
DATE JUL 20 2001

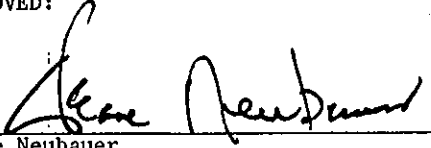
STATE OF HAWAII
UNIVERSITY OF HAWAII AT MANOA
COLLEGES OF ARTS AND SCIENCES
COLLEGE OF NATURAL SCIENCES
OFFICE OF THE DEAN

DEAN OF THE COLLEGE OF NATURAL SCIENCES

The Office of the Dean of the College of Natural Sciences directs and coordinates the activities, curricular, personnel and budget affairs of the College and its ancillary support components including budget management, staff supervision, community relations, grievance and litigation and travel.

The Dean reports to the Office of the Chancellor of the University of Hawaii at Manoa and functions with the authority delegated by the President.

NEW ORGANIZATIONAL CHARTS
AND
FUNCTIONAL STATEMENTS
FOR SOEST

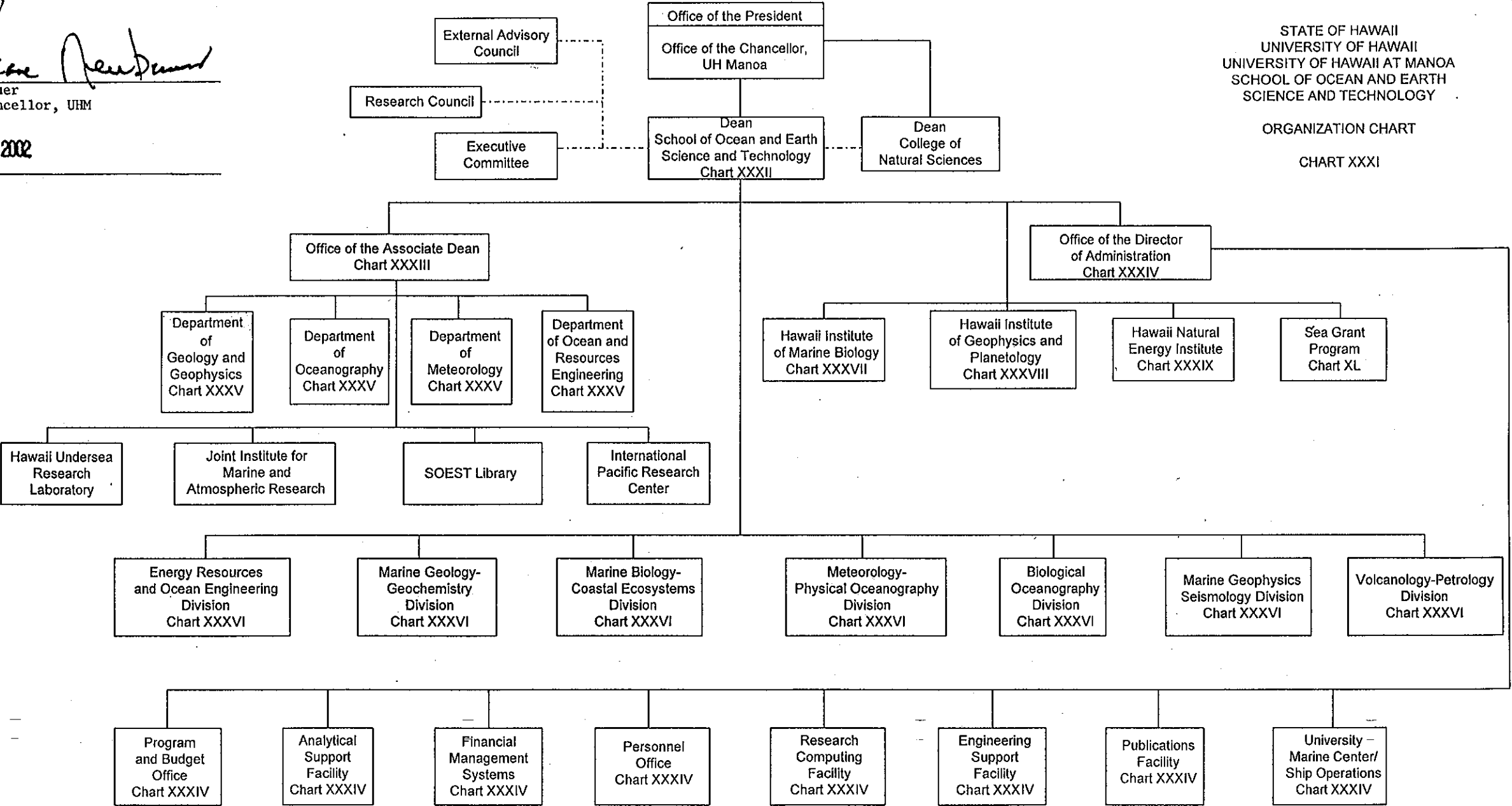
APPROVED: 
Deane Neubauer
Interim Chancellor, UHM

FEB -4 2002

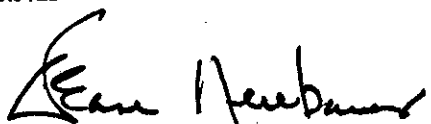
Date

STATE OF HAWAII
UNIVERSITY OF HAWAII
UNIVERSITY OF HAWAII AT MANOA
SCHOOL OF OCEAN AND EARTH
SCIENCE AND TECHNOLOGY

ORGANIZATION CHART
CHART XXXI



APPROVED:


Deane Neubauer
Interim Chancellor, UHM

FEB - 4 2002

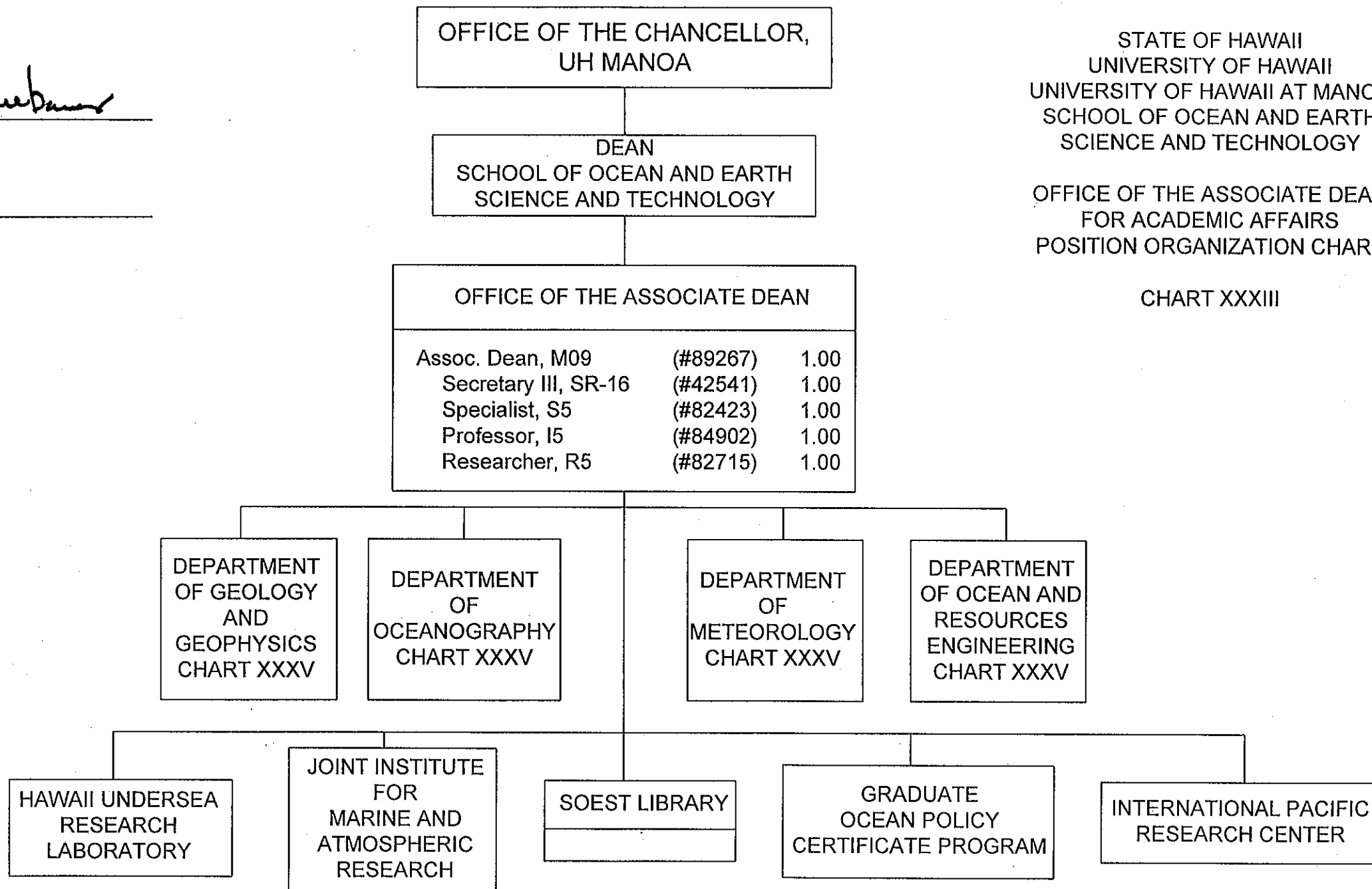
Date

PROPOSED

STATE OF HAWAII
UNIVERSITY OF HAWAII
UNIVERSITY OF HAWAII AT MANOA
SCHOOL OF OCEAN AND EARTH
SCIENCE AND TECHNOLOGY

OFFICE OF THE ASSOCIATE DEAN
FOR ACADEMIC AFFAIRS
POSITION ORGANIZATION CHART

CHART XXXIII



STATE OF HAWAII
UNIVERSITY OF HAWAII

UNIVERSITY OF HAWAII AT MANOA
SCHOOL OF OCEAN AND EARTH SCIENCE
AND TECHNOLOGY

ASSISTANT TO THE DEAN

This office provides assistance to the Dean and Associate Dean in all aspects of SOEST operations. The principal functions of this office include the following:

Assures coordination of the Dean's administrative affairs.

Provides liaison and coordination for legislative matters.

Assists in SOEST Public Information and Relations affairs.

Provides recording and logistical support of Executive Committee, and Research Council, and other meetings as assigned.

Prepares reports and other correspondence as required.

Conducts special projects as assigned.

SECRETARY TO THE DEAN

This position functions as an executive Secretary to the Dean, providing secretarial services through maintenance of the Dean's calendar, managing and booking his/her travel, and provides administrative and office management services which include the following:

Distribution of mail and correspondence to all school units.

Supervision of secretarial and clerical help within the Dean's office.

Provides office management and telephone services to the Dean and his staff.

Assures maintenance of the Dean's files.

Coordinates the Dean's correspondence.

Facilitates communications between the Offices of the Dean, Associate Dean and the Director of Administration.

OFFICE OF THE ASSOCIATE DEAN

Under the policies and guidelines approved by the Dean, this office is primarily responsible for providing the central focus and accommodating the needs of the instructional components of the School.

Among the instructional programs under the Associate Dean are four academic Departments: Geology and Geophysics; Meteorology; Oceanography; and Ocean and Resources Engineering; as well as the Hawaii Undersea Research Program, the Joint Institute for Marine and Atmospheric Research, and the Graduate Ocean Policy Certificate Program. In providing an overview for these functions, the Associate Dean is responsible for:

STATE OF HAWAII
UNIVERSITY OF HAWAII

UNIVERSITY OF HAWAII AT MANOA
SCHOOL OF OCEAN AND EARTH SCIENCE
AND TECHNOLOGY

Faculty Development

Oversees SOEST faculty in the instructional and supervisory roles; academic recruiting; development of programs to attract excellent graduate and undergraduate students to SOEST Departments.

Curriculum Development

Maintains an overview of all SOEST instructional program needs, including curriculum development, establishing innovative educational programs, evaluation of course proposals, course schedules, and students advisement.

Academic Program Review

The Associate Dean is responsible for identifying new educational directions and methodologies, development of new educational programs, advising the Dean on academic matters relating to SOEST research programs and federal and State relations.

Program Administration, Planning, Representation and Consultation with Dean

Continuing interaction is maintained to ensure that the Dean and the Associate Dean each remain aware of problems and opportunities concerning the School's academic program and operations. The Associate Dean also is responsible for administration of the SOEST Library.

The Associate Dean represents SOEST on educational matters at the State, national and international levels, as appropriate and represents the Dean on educational matters to the offices of the Chancellor, the Vice-Chancellors, the Dean of Natural Sciences, the Dean of Engineering, and other appropriate units within the University.

Other responsibilities as required by the Dean shall be fulfilled by the Associate Dean. These may include such matters as public relations, fund raising, budgeting, planning, and international cooperative programs of the School.

Library

The principal function of this unit is to provide specialized scientific and technical library services to SOEST faculty members and students. In conjunction with instructional and research staff, periodicals and books necessary for teaching and research are acquired and maintained. The Library contains over 1600 linear feet of library material. The SOEST Librarian reports to the Associate Dean.

Graduate Ocean Policy Certificate Program

The wise use and careful stewardship of the ocean require people with multidisciplinary and interdisciplinary advanced education in the natural and social sciences. This graduate certificate program is designed for classified graduate students and community professional practitioners who wish to

STATE OF HAWAII
UNIVERSITY OF HAWAII

UNIVERSITY OF HAWAII AT MANOA
SCHOOL OF OCEAN AND EARTH SCIENCE
AND TECHNOLOGY

complement their existing degree or curriculum. An advisory committee assists each student in custom-designing an 18-credit program that draws on marine-related courses in law, geography, political science, economics, oceanography, or ocean engineering. In addition, an interdisciplinary seminar and two practica (one in a natural science and one in a social science) are required.

JOINT PROGRAMS

Joint Institute for Marine and Atmospheric Research (JIMAR) -- jointly sponsored by the University of Hawaii and the National Oceanic and Atmospheric Administration, JIMAR pursues research involving both theoretical and observational studies on climate, equatorial oceanography, and tsunamis.

Hawaii Undersea Research Laboratory (HURL) -- established by a cooperative agreement between the National Oceanic and Atmospheric Administration (NOAA) and the University of Hawaii, HURL primarily supports research projects that require data acquisition at depths greater than scuba limits and concentrates its research efforts using submersibles in these areas: fisheries; pollution; sea floor properties and processes; and ocean technology and services.

International Pacific Research Center (IPRC) -- Sponsored by the University of Hawai'i, the National Oceanic and Atmospheric Administration, the National Aeronautics and Space Administration, the National Science Foundation, the U.S. Department of Energy, the Japan Marine Science and Technology Center, and the (Japan) National Space Development Agency, IPRC pursues research on the nature and predictability of climate variability and regional aspects of global environmental change in the Asia-Pacific region.

DEPARTMENTS

NEW ORGANIZATIONAL CHARTS
AND
FUNCTIONAL STATEMENTS
FOR CNS

STATE OF HAWAII
UNIVERSITY OF HAWAII AT MANOA
COLLEGES OF ARTS AND SCIENCES
COLLEGE OF NATURAL SCIENCES
MARINE OPTION PROGRAM

The Marine Option Program, headed by its Director, who reports to the Dean of the College of Natural Sciences, offers undergraduates of all majors throughout the University system the opportunity to discover and develop their marine and marine-related interests and talents. The office is responsible for the development and management of one certificate-granting program offered at all UH campuses, including the community colleges, for those students who elect to complete selected academic requirements and a practical project. In addition, the office sponsors newsletters, seminars, symposia, field trips, workshops, baseline surveys and other hands-on experiences designed to promote marine education and training. Academic and career guidance is provided to current and prospective students.