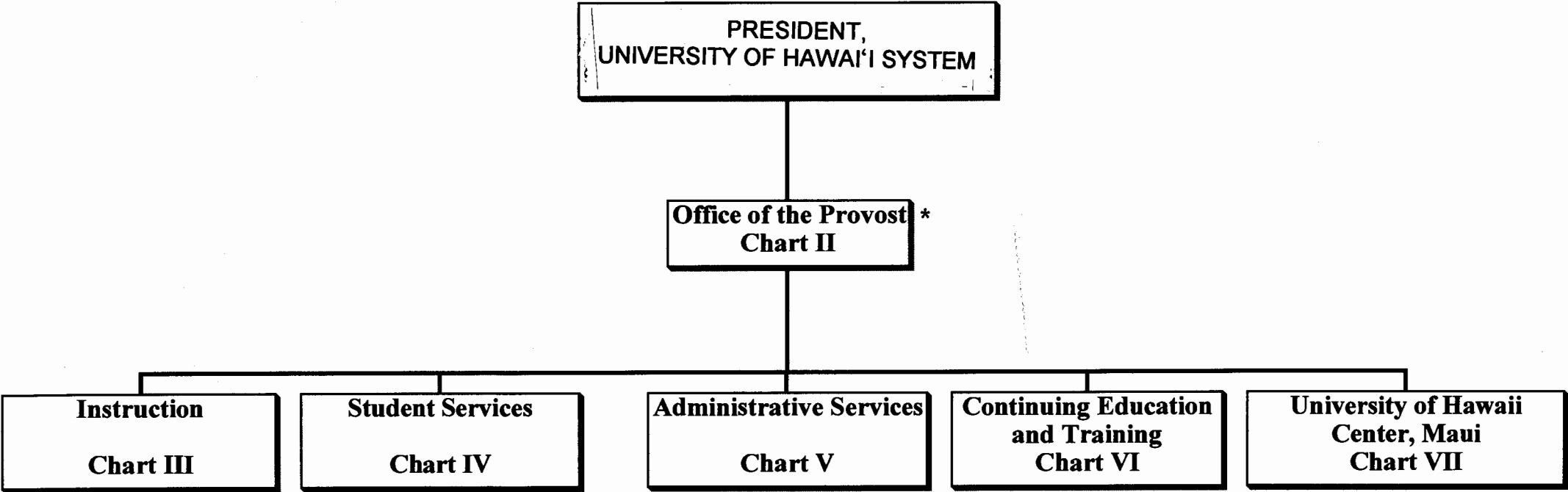


STATE OF HAWAII
UNIVERSITY OF HAWAII
COMMUNITY COLLEGES
MAUI COMMUNITY COLLEGE

Organization Chart

Chart I



*New Position Classification Pending

	<u>Perm</u>	<u>Temp</u>
General Fund	166.50	3.00
(B) Special Funds	7.50	
(W) Revolving Funds	2.00	

**STATE OF HAWAII
UNIVERSITY OF HAWAII
COMMUNITY COLLEGES
MAUI COMMUNITY COLLEGE
OFFICE OF THE PROVOST**

Position Organization Chart

Chart II

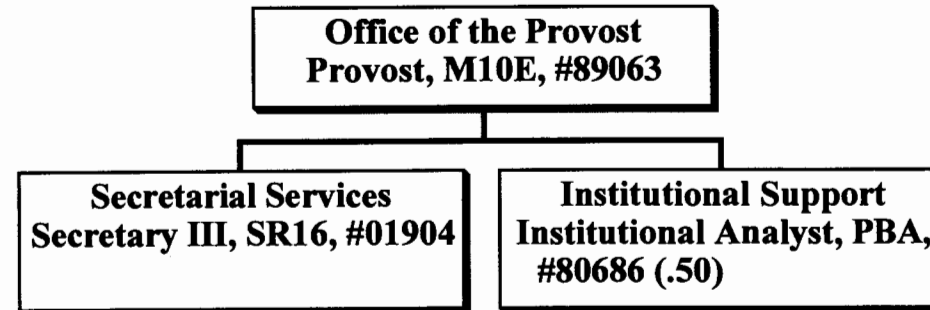


CHART UPDATED
DATE JUL - 1 2002

Perm
General Fund 2.50

STATE OF HAWAII
UNIVERSITY OF HAWAII
COMMUNITY COLLEGES
MAUI COMMUNITY COLLEGE
INSTRUCTION

Position Organization Chart

Chart III

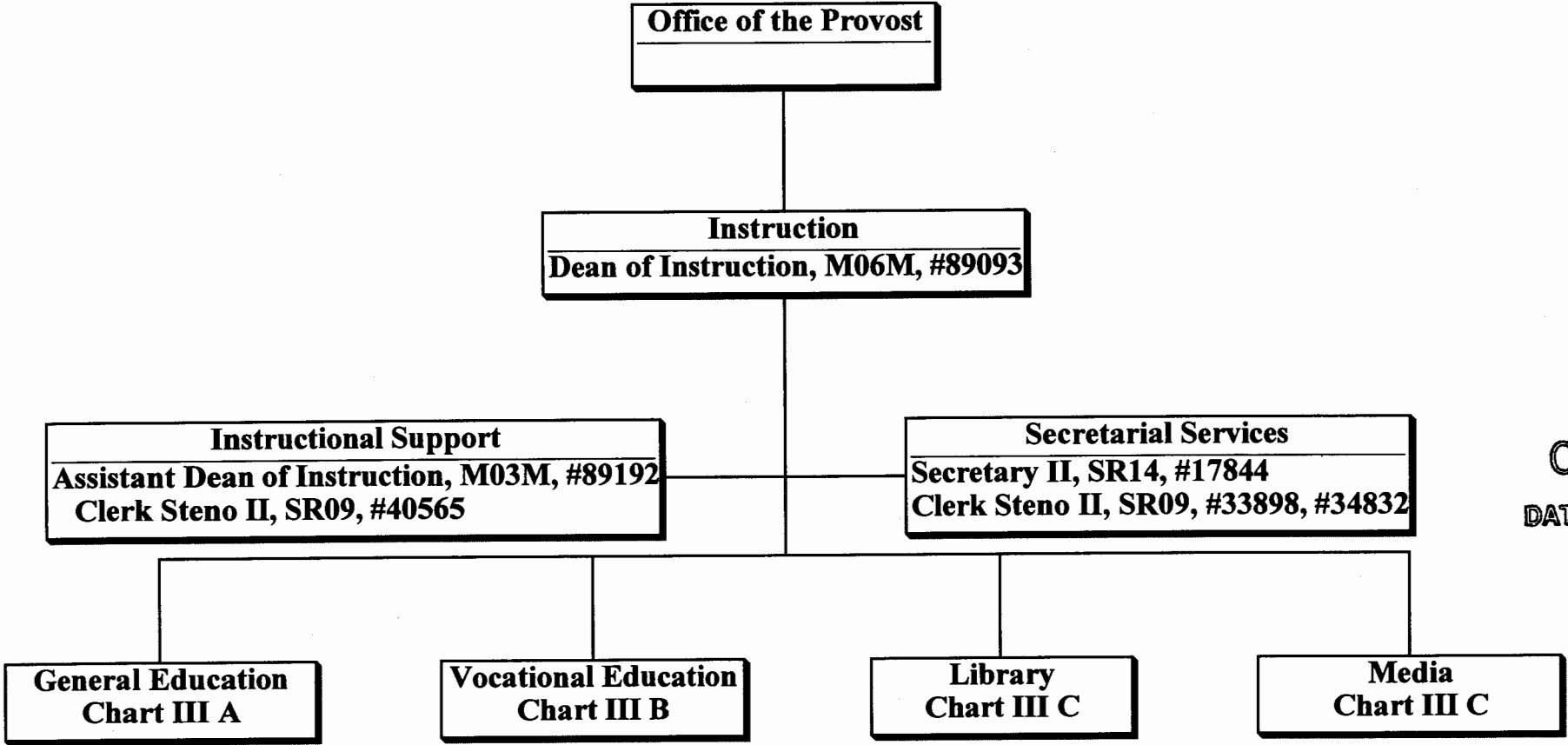


CHART UPDATED

DATE JUL - 1 2007

General Fund Perm
6.00

STATE OF HAWAII
UNIVERSITY OF HAWAII
COMMUNITY COLLEGES
MAUI COMMUNITY COLLEGE
INSTRUCTION

Position Organization Chart

Chart III A

Instruction

General Education

Math/Science Division

Chairperson**

Faculty (14.50), #82356, #82660, #82754, #83018, #83290, #83632, #83833, #83866, #84011, #84137, #84570, #86073, #86725, #86932, #82666 (.50)

Educational Specialist , PBA, #81658

Educational & Academic Support Specialist, PBA, #81730, #81731

Account Clerk III, SR11, #35751

Language Arts Division

Chairperson**

Faculty (11.00), #82199, #82408, #82636, #82958, #83093, #83898, #84148, #84367, #84482, #84998, #85074

Educational Specialist , PBB, #81214+

Clerk Steno II, SR09, #47721

Social Science/Humanities Division

Chairperson**

Faculty (15.00), #82665, #82778, #82798, #83206, #83377, #83546, #83613, #83628, #84214, #84312, #84997, #84999, #86887T*, #87088,
#86857T* (.50), #86888T* (.50)

Outreach

Faculty (2.00), #86630, #86816

* Temporary Position

** Chairperson is appointed from among instructional positions within the division

+ Supervised by one of the faculty positions.

	Perm	Temp
General Fund	46.50	2.00

CHART UPDATED
JUL - 1 2002
DATE _____

STATE OF HAWAII
UNIVERSITY OF HAWAII
COMMUNITY COLLEGES
MAUI COMMUNITY COLLEGE
INSTRUCTION

Position Organization Chart

Chart III B

Instruction

Vocational Education

Business Division

Chairperson**

Faculty (12.00) #82391, #82410, #82493, #82559, #82608, #83211,
#83274, #83325, #83465, #83739, #84084, #84996

Clerk Steno II, SR09, #47720

Nursing Division

Chairperson**

Faculty (13.50), #82297, #83108, #84174, #84412, #84465, #86681,
#86682, #86683, #86727, #86729, #86730, #86731, #86732, #86734 (.50)

Clerk Steno II, SR09, #28848

Clerk Typist II, SR08, #41707 (.50)

Vocational/Technical Division

Chairperson**

Faculty (8.00), #82020, #83530, #83822, #84025, #84124, #84339,
#84345, #86723

Cooperative Education

Faculty (2.50), #86623, #87085, #84083 (.50)

Clerk Typist II, SR08, #46225

** Chairperson is appointed from among instructional positions within the division

General Fund

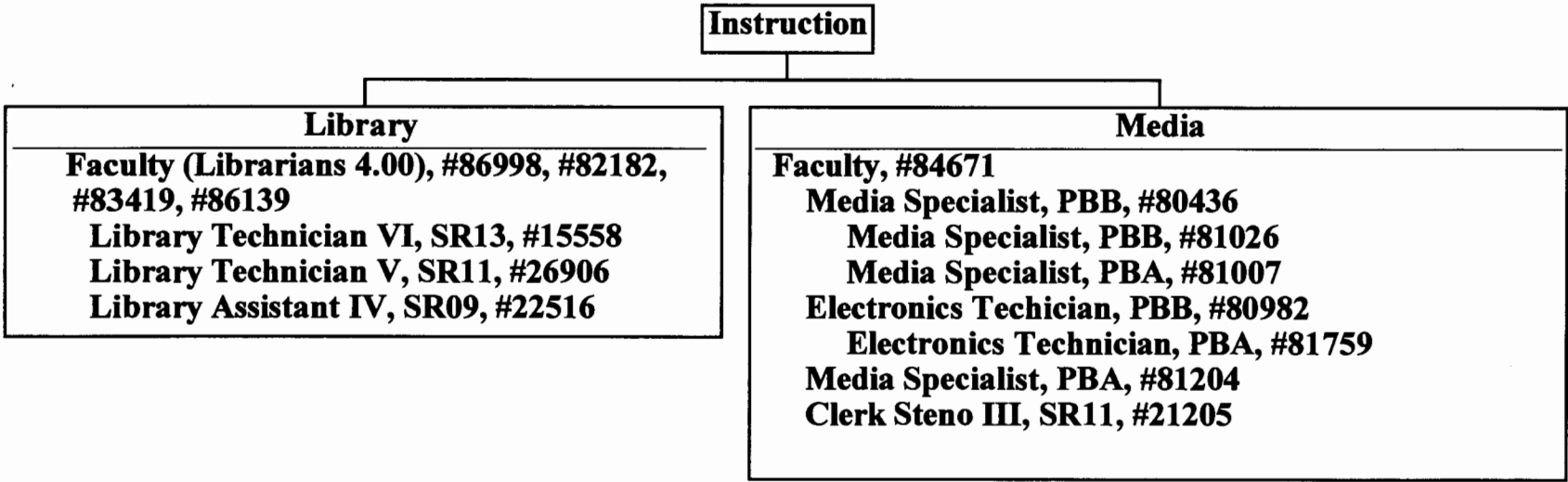
Perm
39.50

CHART UPDATED
JUL - 1 2002
DATE _____

STATE OF HAWAII
UNIVERSITY OF HAWAII
COMMUNITY COLLEGES
MAUI COMMUNITY COLLEGE
INSTRUCTION

Position Organization Chart

Chart III C



General Fund Perm
 15.00

CHART UPDATED

DATE JUL - 1 2002

**STATE OF HAWAII
UNIVERSITY OF HAWAII
COMMUNITY COLLEGES
MAUI COMMUNITY COLLEGE
STUDENT SERVICES**

Position Organization Chart

Chart IV

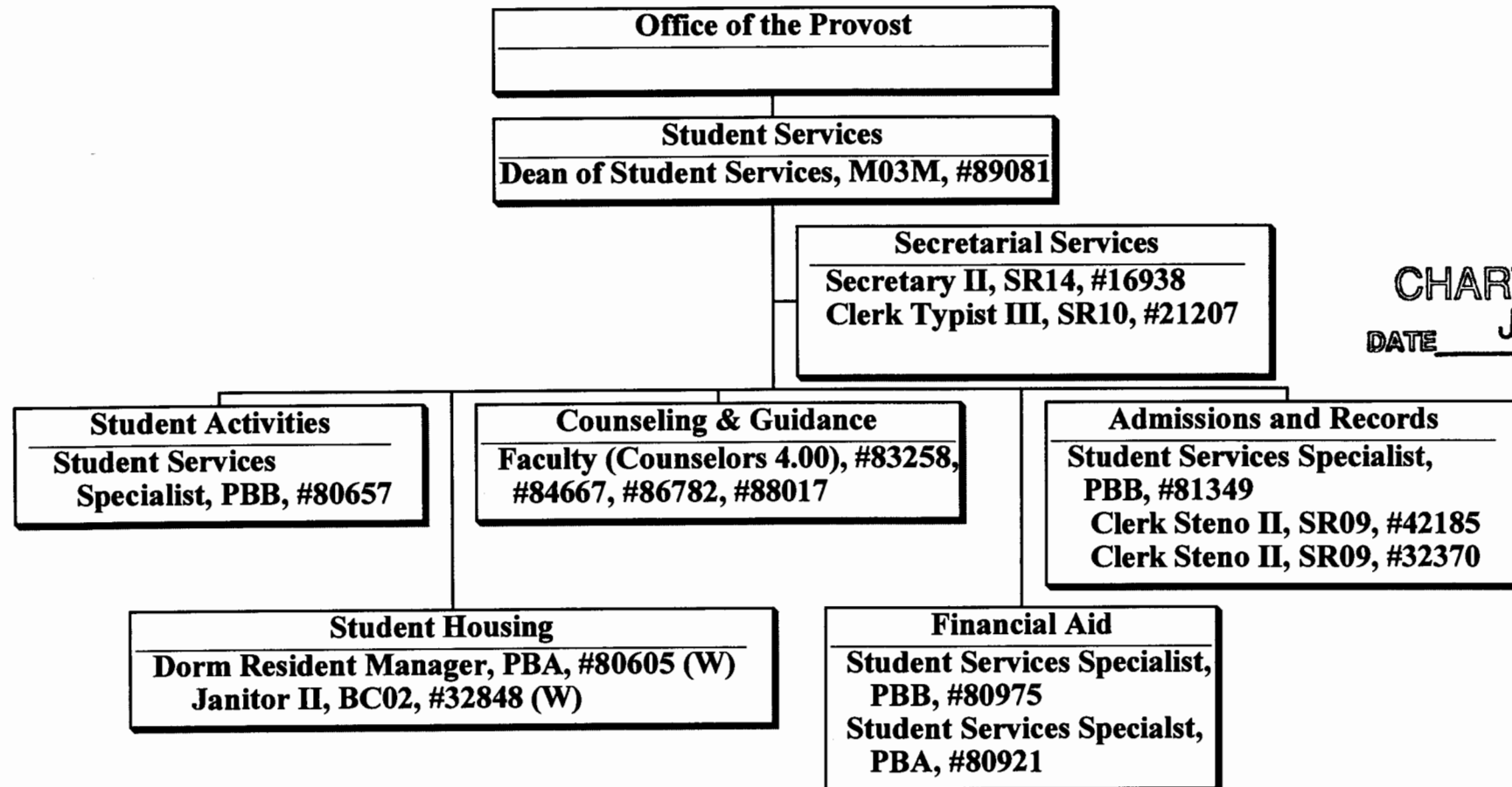


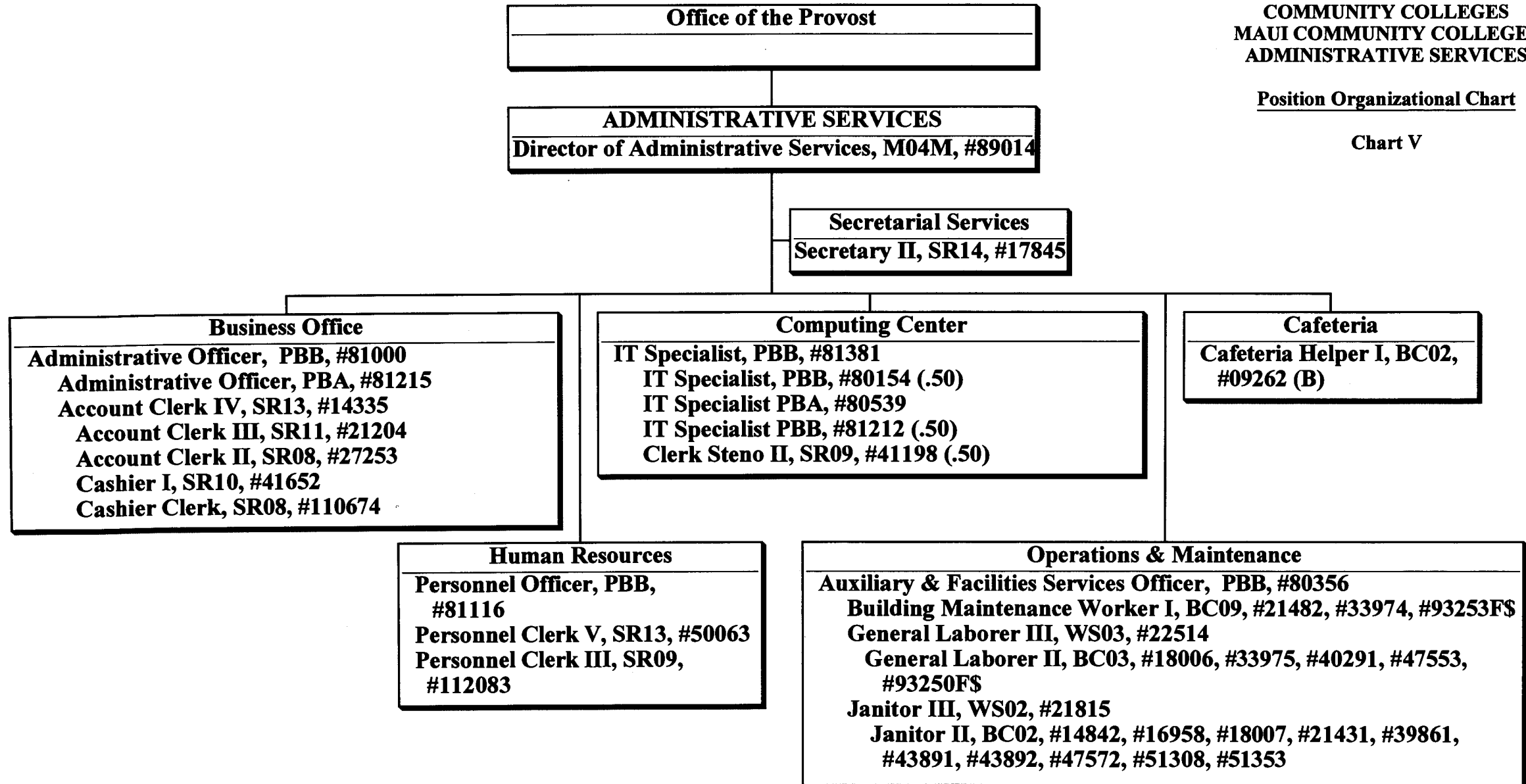
CHART UPDATED
DATE JUL - 1 2002

	<u>Perm</u>
(W) Revolving Funds	2.00
General Fund	13.00

STATE OF HAWAII
UNIVERSITY OF HAWAII
COMMUNITY COLLEGES
MAUI COMMUNITY COLLEGES
ADMINISTRATIVE SERVICES

Position Organizational Chart

Chart V



\$Appropriated positions to be established.

CHART UPDATED
JUL - 1 2002
DATE _____

Perm
General Fund 36.50
(B) Special Funds 1.00

**STATE OF HAWAII
UNIVERSITY OF HAWAII
COMMUNITY COLLEGES
MAUI COMMUNITY COLLEGE
CONTINUING EDUCATION
AND TRAINING**

Position Organization Chart

Chart VI

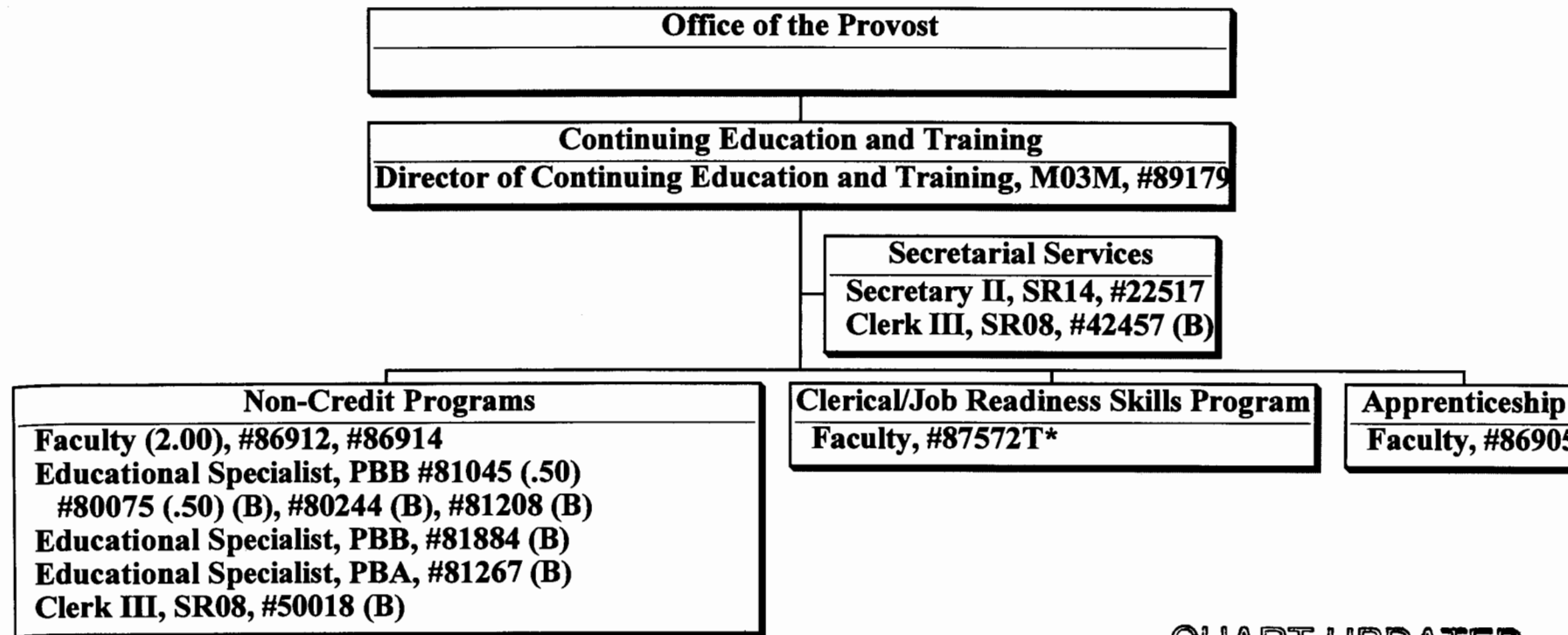


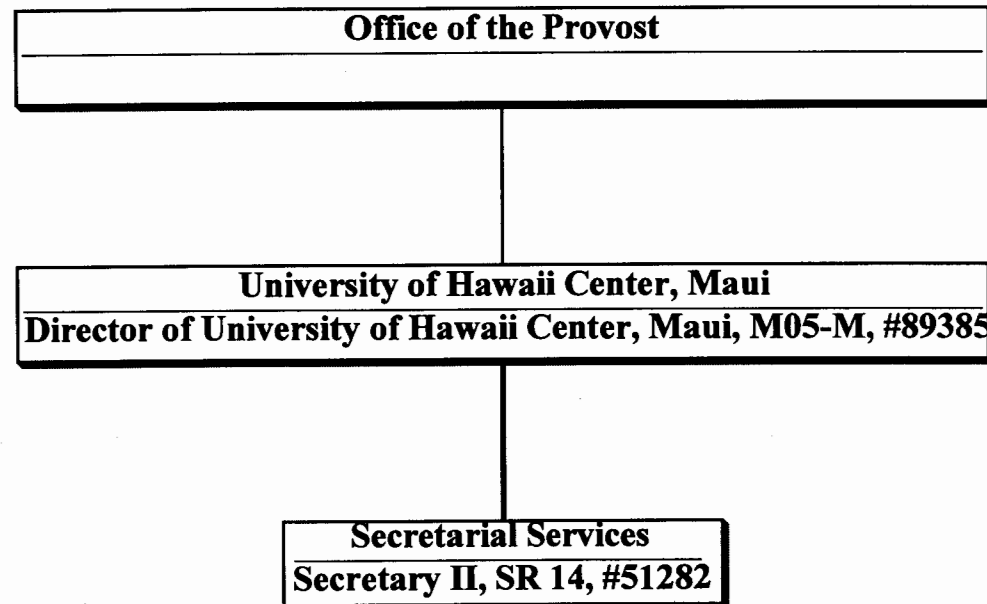
CHART UPDATED
JUL - 1 2002
DATE _____

	<u>Perm</u>	<u>Temp</u>
General Funds	5.50	1.00
(B) Special Funds	6.50	

**STATE OF HAWAII
UNIVERSITY OF HAWAII
COMMUNITY COLLEGES
MAUI COMMUNITY COLLEGE
UNIVERSITY OF HAWAII CENTER, MAUI**

Position Organization Chart

Chart VII



Perm
General Fund 2.00

CHART UPDATED
DATE JUL - 1 2002