

STATE OF HAWAII
UNIVERSITY OF HAWAII
UNIVERSITY OF HAWAII AT HILO
POSITION ORGANIZATIONAL CHART
CHART I

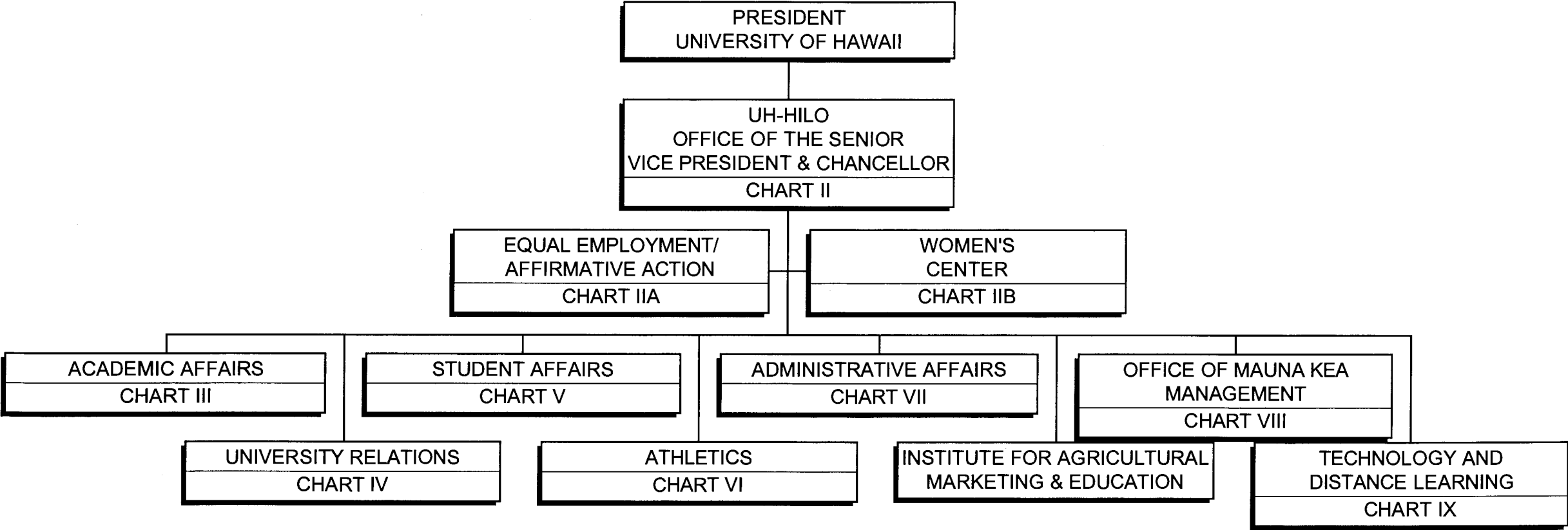
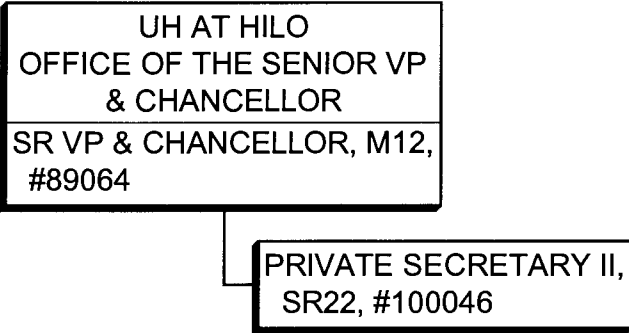


CHART UPDATED

DATE JUL - 1 2002

STATE OF HAWAII
UNIVERSITY OF HAWAII
UNIVERSITY OF HAWAII AT HILO
OFFICE OF THE SENIOR VP & CHANCELLOR
POSITION ORGANIZATION CHART
CHART II

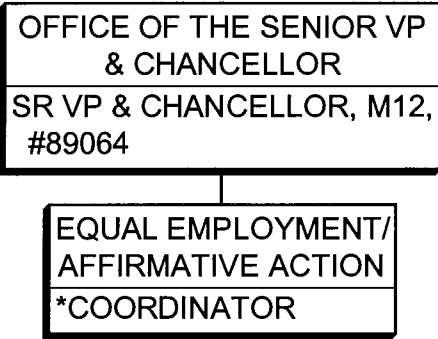


Footnote: Pending reorganization
Special Assistant to the Chancellor
Assistant to the Chancellor
Director of EEO/AA
Administrative Officer
Secretary II
Secretary II
Clerk Typist III

CHART UPDATED

DATE JUL - 1 2002

STATE OF HAWAII
UNIVERSITY OF HAWAII
UNIVERSITY OF HAWAII AT HILO
OFFICE OF THE SENIOR VP & CHANCELLOR
EEO/AA
POSITION ORGANIZATION CHART
CHART IIA



* Abolishment pending reorganization

CHART UPDATED

DATE JUL - 1 2002

STATE OF HAWAII
UNIVERSITY OF HAWAII
UNIVERSITY OF HAWAII AT HILO
OFFICE OF THE SENIOR VP & CHANCELLOR
WOMEN'S CENTER
POSITION ORGANIZATION CHART
CHART IIB

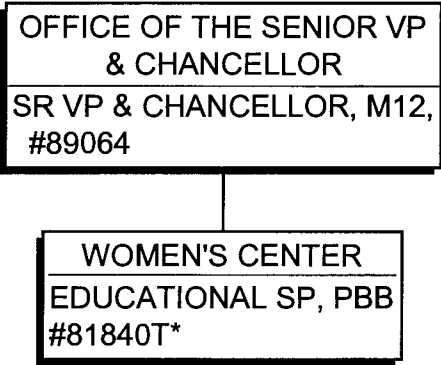


CHART UPDATED

DATE JUL - 1 2002

POSITIONS
TEMPORARY GENERAL FUND - 1.00*