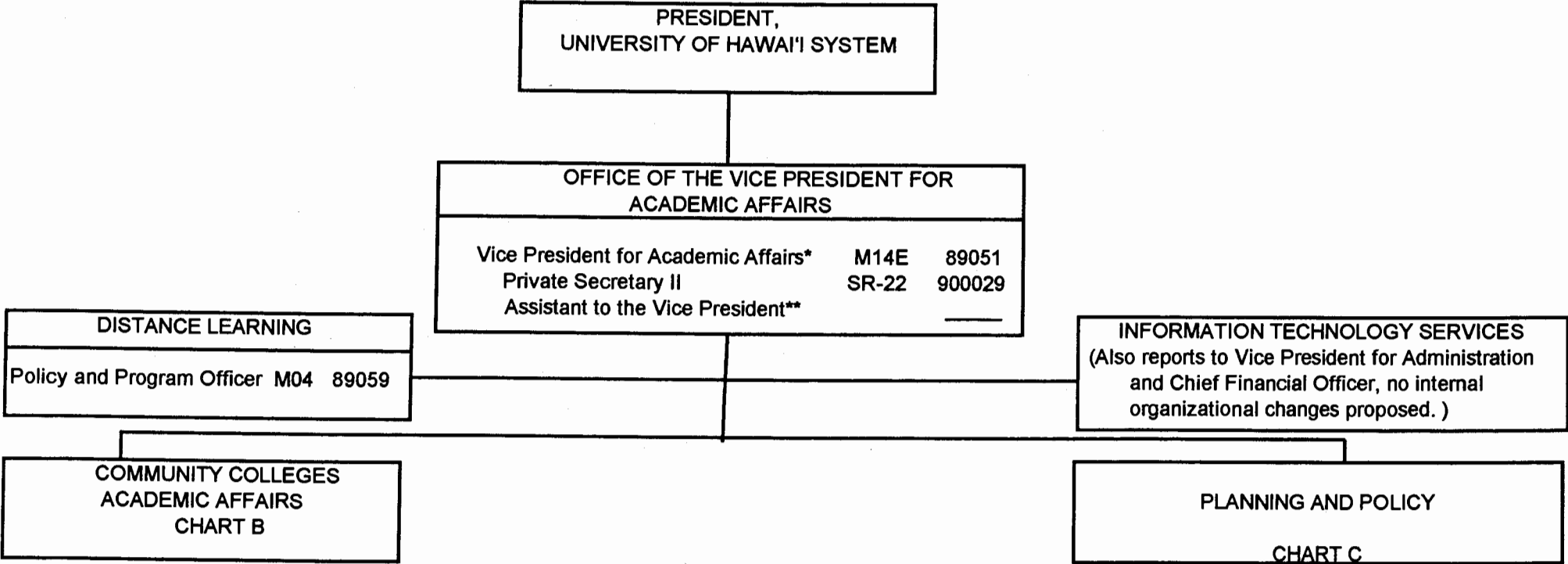


STATE OF HAWAII
UNIVERSITY OF HAWAII
SYSTEMWIDE ADMINISTRATION
OFFICE OF THE VICE PRESIDENT
FOR ACADEMIC AFFAIRS

ORGANIZATIONAL CHART



* To be redescribed.
**Position number to be determined, proposed classification.

APPROVED BY THE UNIVERSITY
BOARD OF REGENTS
DEC 12 2002
Date

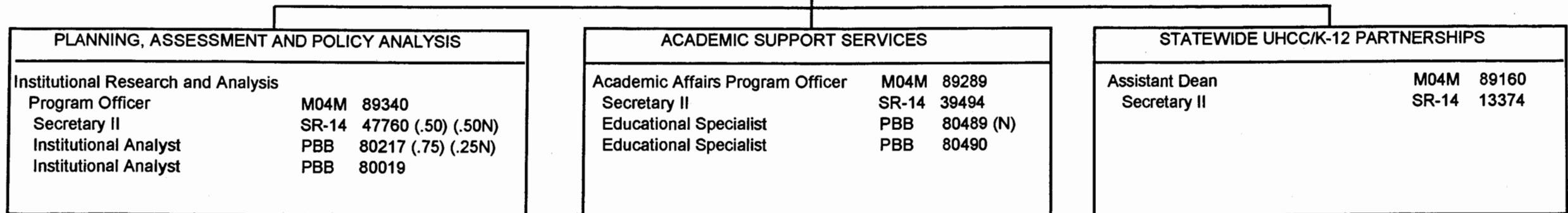
STATE OF HAWAII
UNIVERSITY OF HAWAII
SYSTEMWIDE ADMINISTRATION
OFFICE OF THE VICE PRESIDENT
FOR ACADEMIC AFFAIRS
COMMUNITY COLLEGES ACADEMIC AFFAIRS

ORGANIZATIONAL CHART

CHART (B)

OFFICE OF THE VICE PRESIDENT FOR ACADEMIC AFFAIRS		
Vice President for Academic Affairs	M14E	89051

COMMUNITY COLLEGES ACADEMIC AFFAIRS		
Associate Vice President for Academic Affairs for Community Colleges*		89222
Secretary IV	SR-18	15498



NOTE: All positions in Community Colleges Academic Affairs to be redescribed, also Pos. No. 89051.

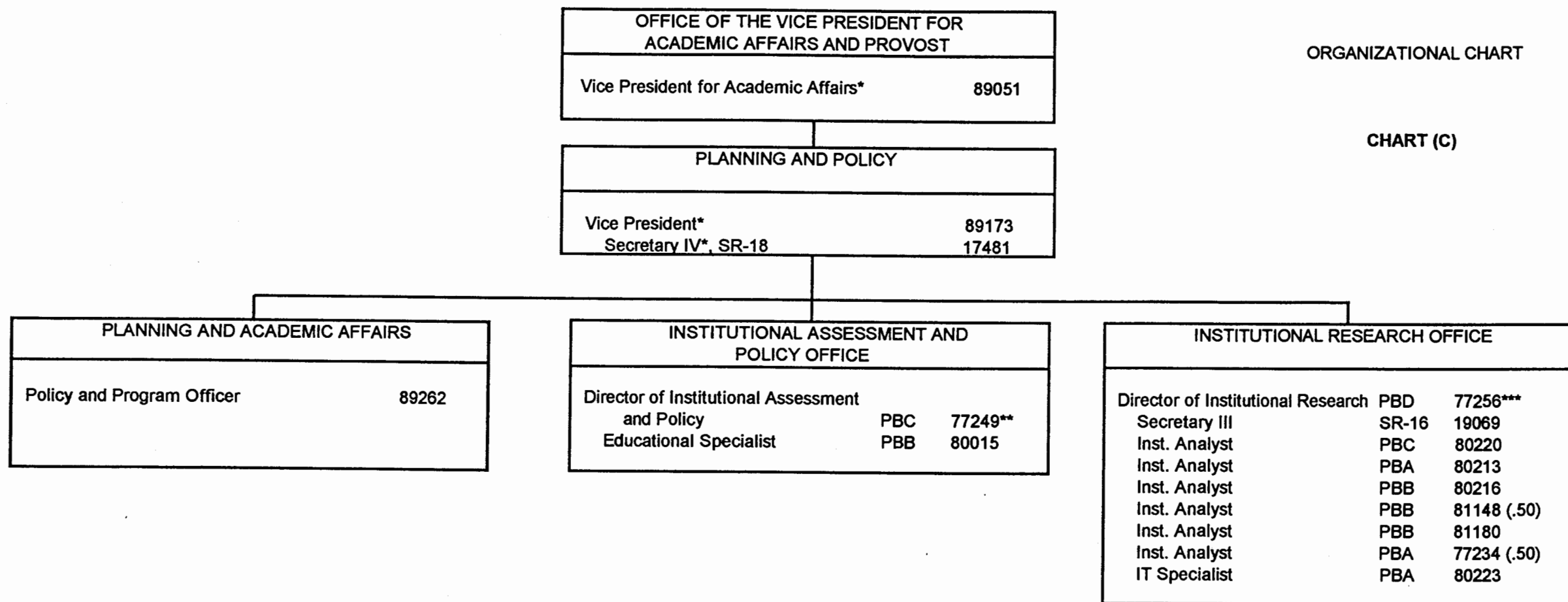
*Proposed classification.

APPROVED BY THE UNIVERSITY
BOARD OF REGENTS
DEC 12 2002
Date

STATE OF HAWAII
UNIVERSITY OF HAWAII
SYSTEMWIDE ADMINISTRATION
OFFICE OF THE VICE PRESIDENT
FOR ACADEMIC AFFAIRS AND PROVOST
PLANNING AND POLICY

ORGANIZATIONAL CHART

CHART (C)



STATE OF HAWAII
UNIVERSITY OF HAWAII
SYSTEMWIDE ADMINISTRATION
INFORMATION TECHNOLOGY SERVICES

ORGANIZATION CHART

VICE PRESIDENT FOR
ADMINISTRATION AND CHIEF
FINANCIAL OFFICER

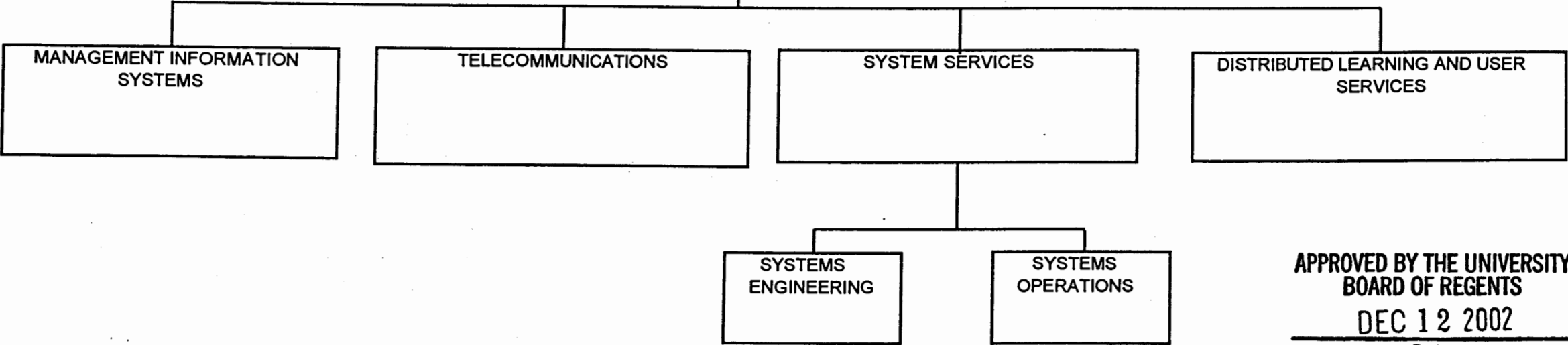
VICE PRESIDENT FOR
ACADEMIC AFFAIRS

INFORMATION TECHNOLOGY SERVICES

Director * 89268

ADMINISTRATIVE SERVICES

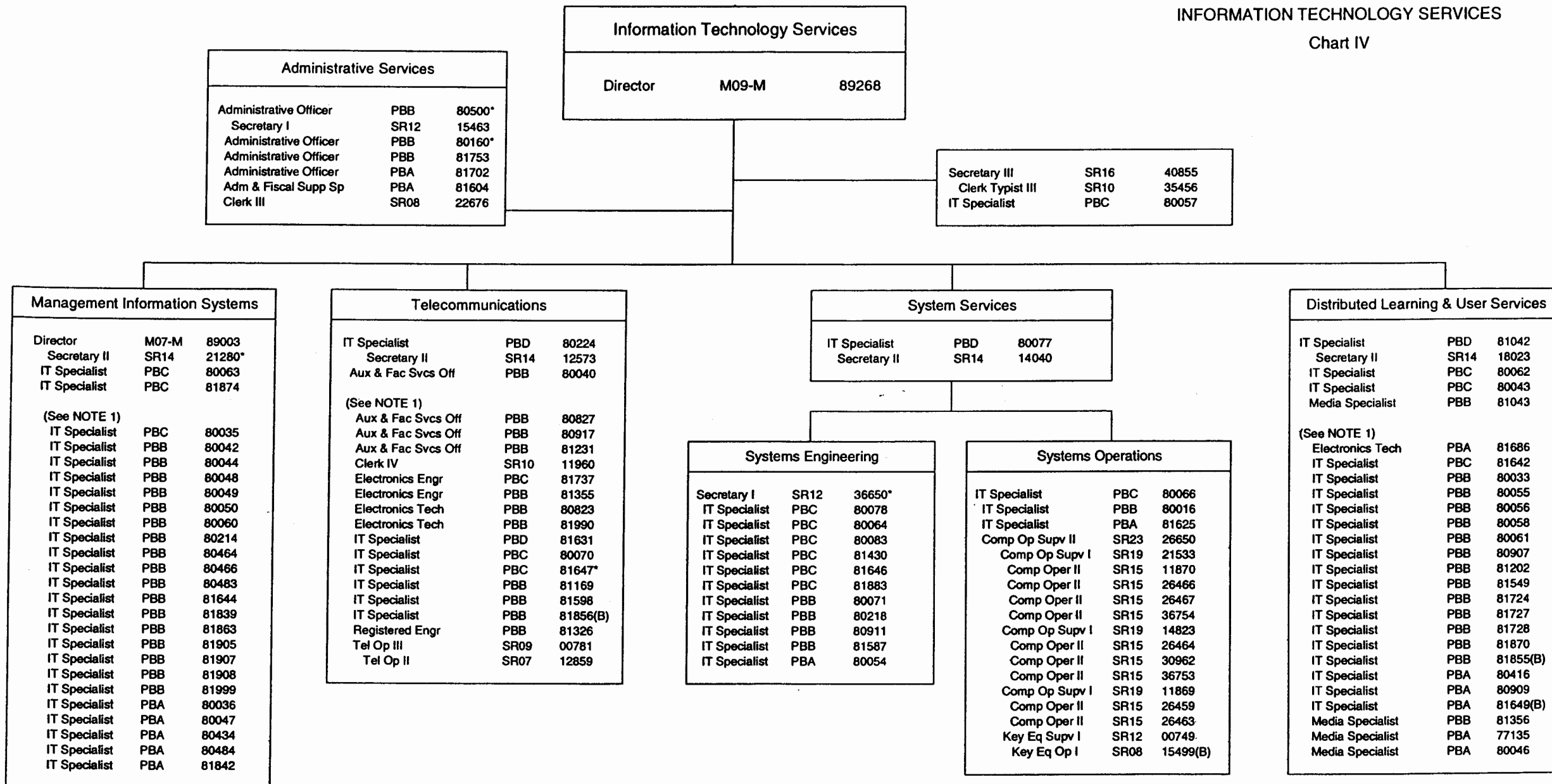
Secretary III SR-16 40855
Clerk Typist III SR-10 35456
IT Specialist PBC 80057



APPROVED BY THE UNIVERSITY
BOARD OF REGENTS
DEC 12 2002
Date

INFORMATION TECHNOLOGY SERVICES

Chart IV



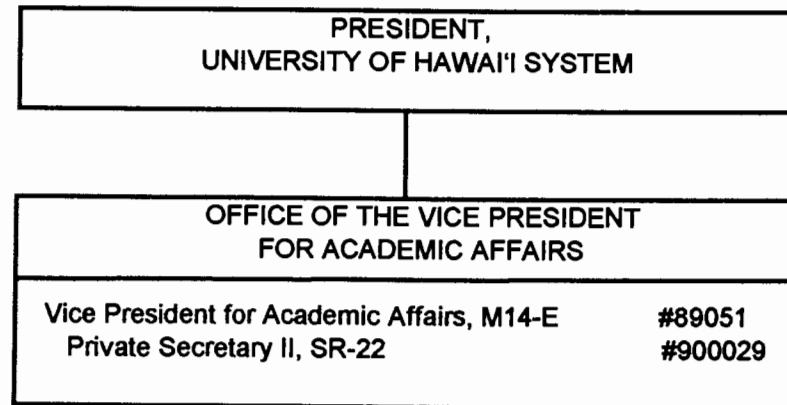
NOTE 1: These staff may report to any of the above supervisors on a project and/or rotational basis based on changing institutional priorities and requirements and shifting work assignments. (Except Tel Op II, Posn 12859 will continue to report to Tel Op III, Posn 00781)

*positions to be redescribed

General Funds 112.00
(B) Special Funds 4.00

STATE OF HAWAII
UNIVERSITY OF HAWAII
SYSTEMWIDE ADMINISTRATION
OFFICE OF THE VICE PRESIDENT
FOR ACADEMIC AFFAIRS

ORGANIZATIONAL CHART



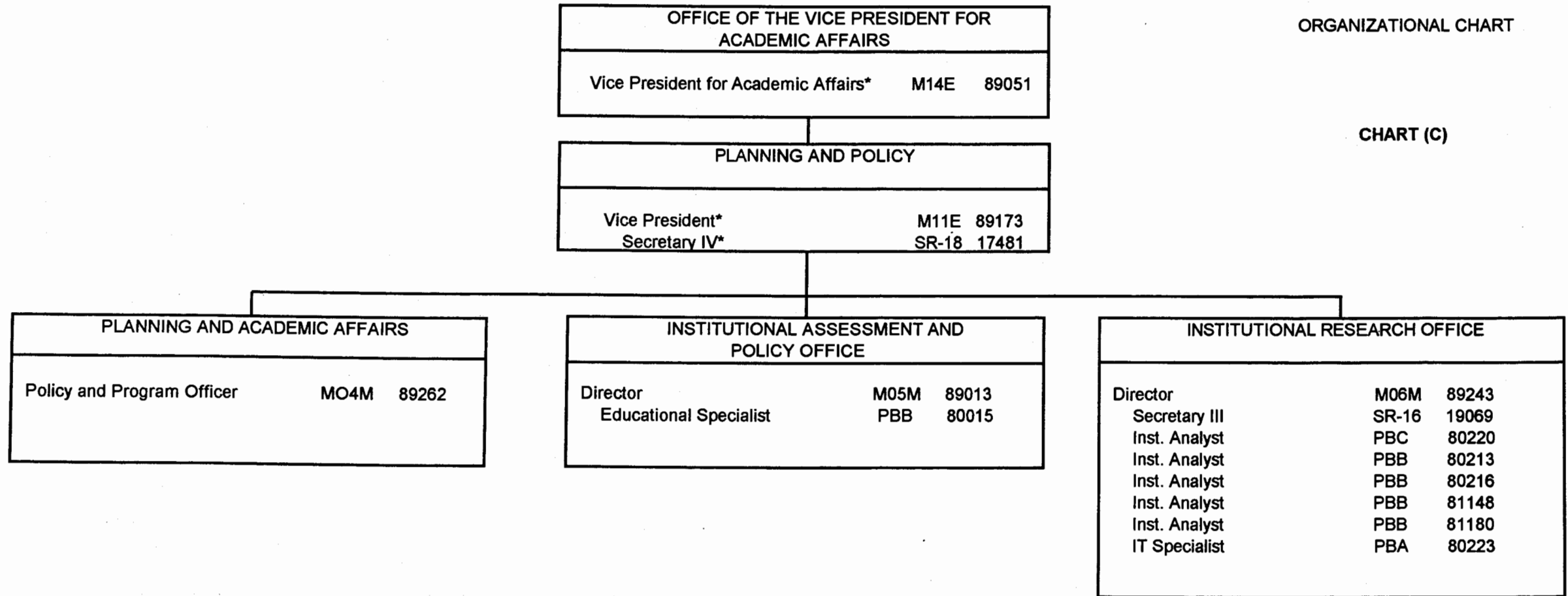
SUPERSEDED
Date DEC 12 2002

CHART UPDATED
DATE JUL - 1 2002

STATE OF HAWAII
UNIVERSITY OF HAWAII
SYSTEMWIDE ADMINISTRATION
OFFICE OF THE VICE PRESIDENT
FOR ACADEMIC AFFAIRS
PLANNING AND POLICY

ORGANIZATIONAL CHART

CHART (C)



OFFICE OF THE PRESIDENT
UNIVERSITY OF HAWAI'I

STATE OF HAWAI'I
UNIVERSITY OF HAWAI'I
SYSTEMWIDE ADMINISTRATION
OFFICE OF THE VICE PRESIDENT
FOR PLANNING AND POLICY
ORGANIZATION CHART

CHART I

SUPERSEDED
Date DEC 12 2002

OFFICE OF THE VICE PRESIDENT
FOR PLANNING AND POLICY

CHART UPDATED
DATE JUL - 1 2002

PLANNING, ACADEMIC AFFAIRS,
AND DISTANCE LEARNING
SUPPORT

INSTITUTIONAL ASSESSMENT
AND POLICY OFFICE

INSTITUTIONAL RESEARCH OFFICE

OFFICE OF THE PRESIDENT
UNIVERSITY OF HAWAI'I

STATE OF HAWAI'I
UNIVERSITY OF HAWAI'I
SYSTEMWIDE ADMINISTRATION
OFFICE OF THE VICE PRESIDENT
FOR PLANNING AND POLICY
POSITION ORGANIZATION CHART

CHART II

SUPERSEDED
Date DEC 12 2002

OFFICE OF THE VICE PRESIDENT
FOR PLANNING AND POLICY

VICE PRESIDENT M11-E 89173

Secretary IV SR18 17481

CHART UPDATED
DATE JUL - 1 2002

PLANNING, ACADEMIC AFFAIRS,
AND DISTANCE LEARNING SUPPORT

Policy and Program Officer (Planning)	M04-M	89262
Policy and Program Officer (Distance Learning)	M04-M	89059

INSTITUTIONAL ASSESSMENT
AND POLICY OFFICE

Director	M05-M	89013
Educational Sp	PBB	80015

INSTITUTIONAL RESEARCH OFFICE

Director	M06-M	89243
Secretary III	SR16	19069
Inst Analyst	PBC	80220
Inst Analyst	PBB	80213
Inst Analyst	PBB	80216
Inst Analyst	PBB	81148
Inst Analyst	PBB	81180
IT Specialist	PBA	80223

General Funds 14.00