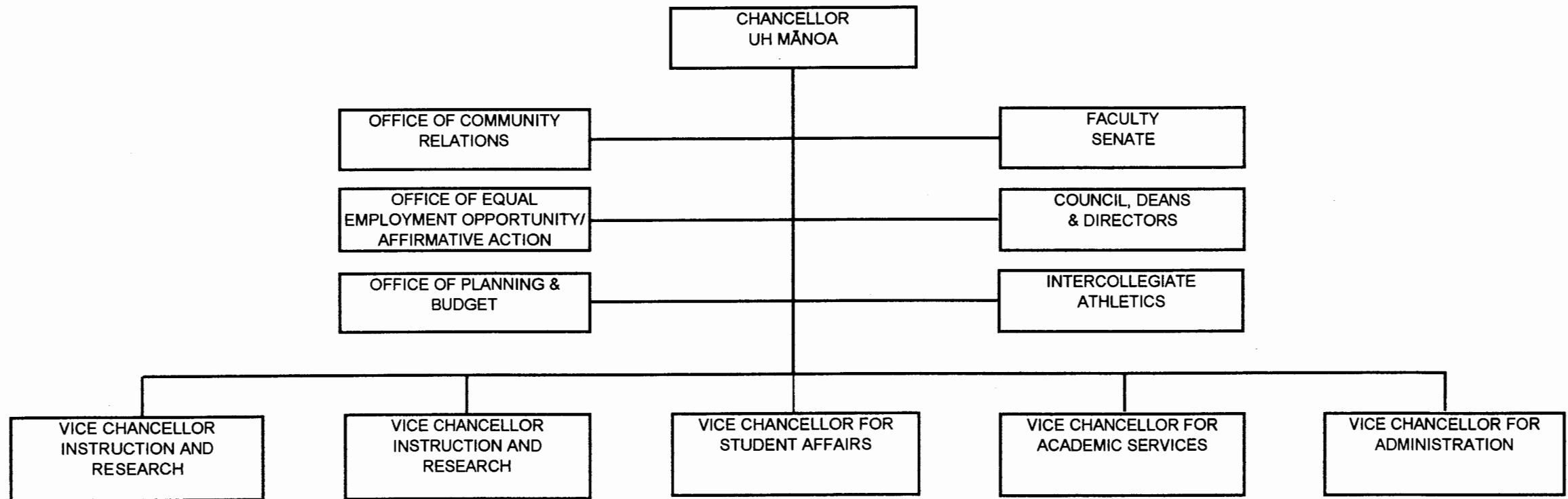


STATE OF HAWAII
UNIVERSITY OF HAWAII
OFFICE OF THE CHANCELLOR
UNIVERSITY OF HAWAII AT MĀNOA
ORGANIZATION CHART



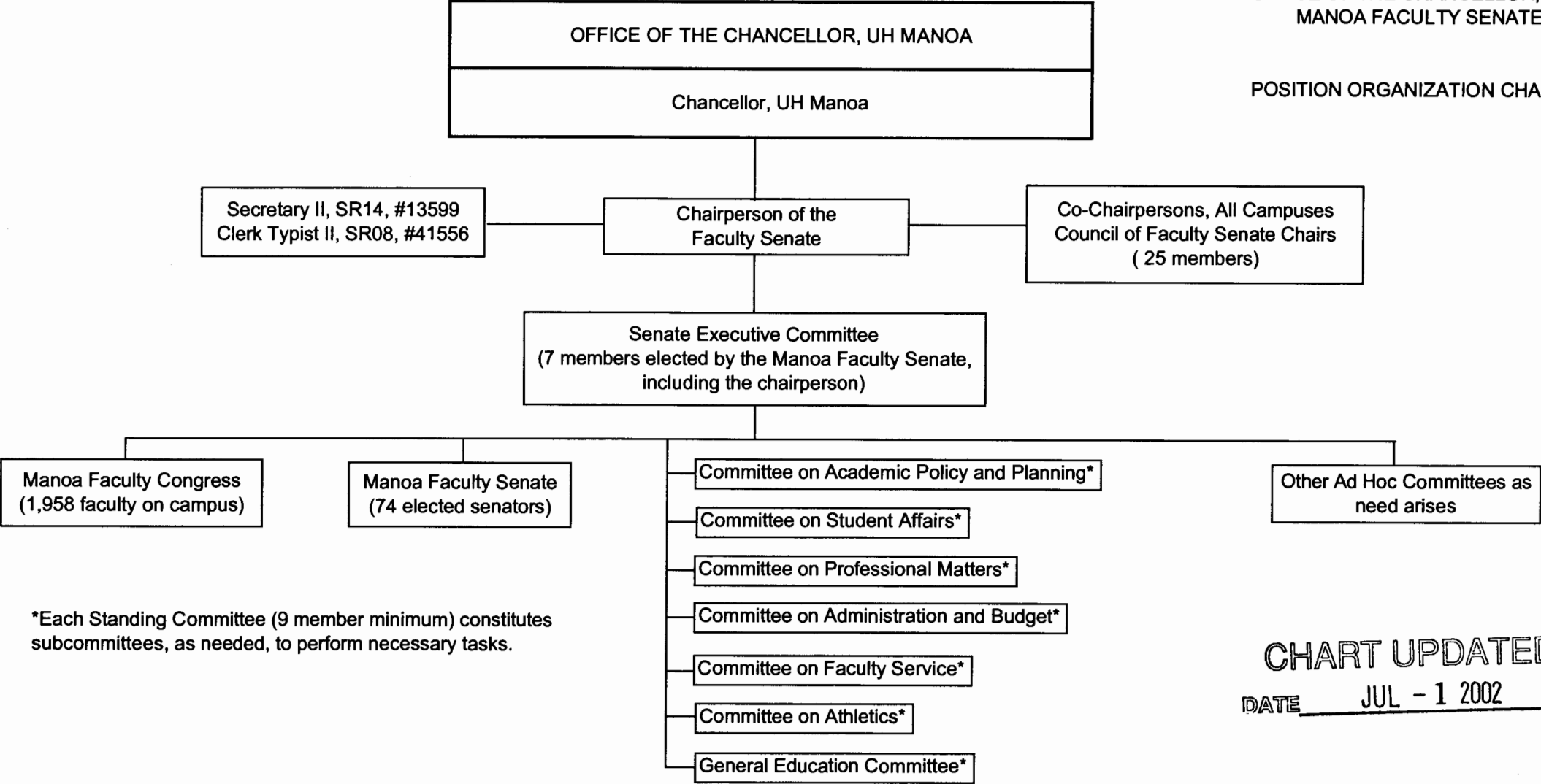
UHMORGCHARTWK

APPROVED BY THE UNIVERSITY
BOARD OF REGENTS
JAN 19 2001

Date

STATE OF HAWAII
UNIVERSITY OF HAWAII
UNIVERSITY OF HAWAII AT MANOA
OFFICE OF THE CHANCELLOR, UHM
MANOA FACULTY SENATE

POSITION ORGANIZATION CHART III

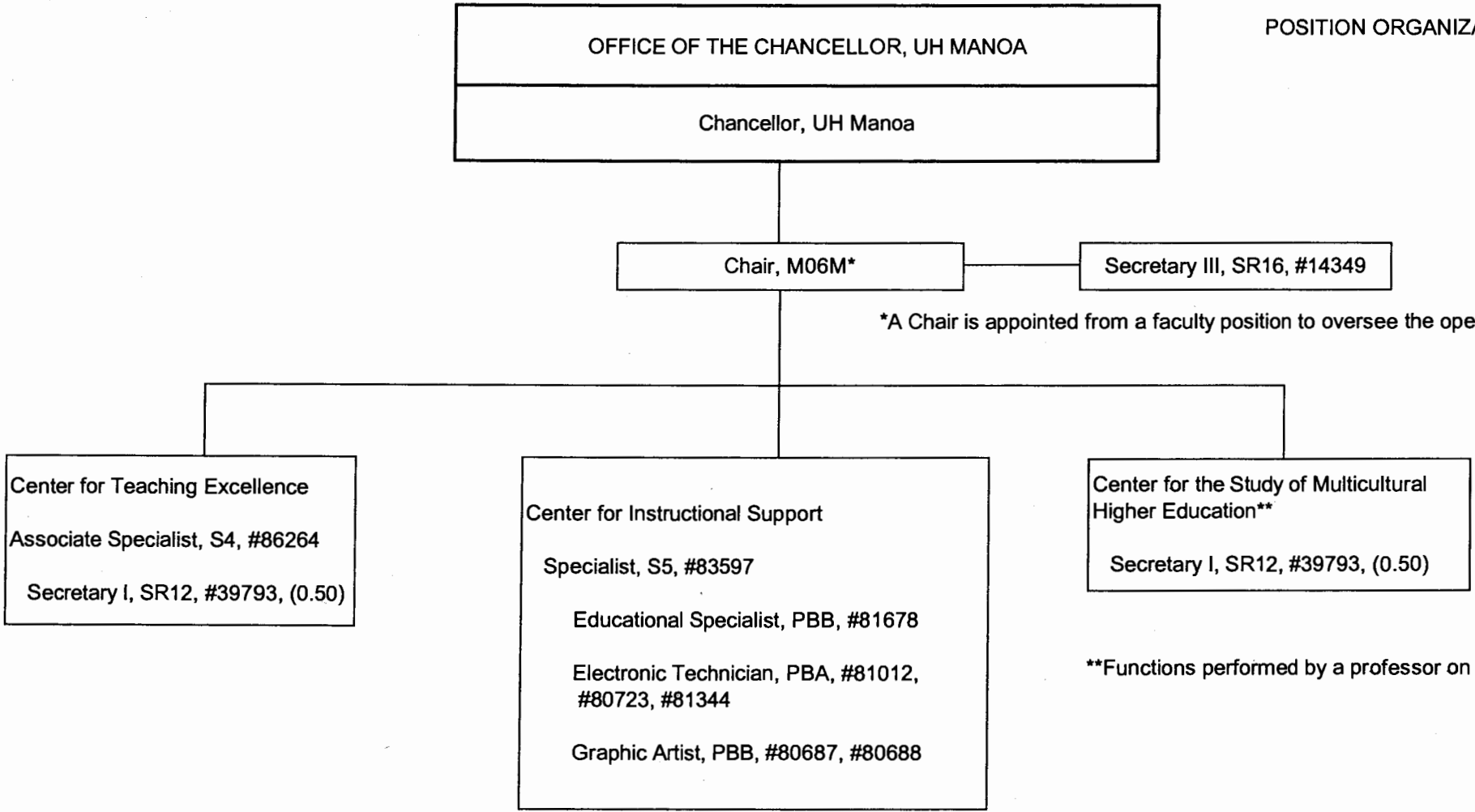


*Each Standing Committee (9 member minimum) constitutes subcommittees, as needed, to perform necessary tasks.

CHART UPDATED
DATE JUL - 1 2002

STATE OF HAWAII
UNIVERSITY OF HAWAII
UNIVERSITY OF HAWAII AT MANOA
OFFICE OF THE CHANCELLOR, UHM
OFFICE OF FACULTY DEVELOPMENT
AND ACADEMIC SUPPORT

POSITION ORGANIZATION CHART IV

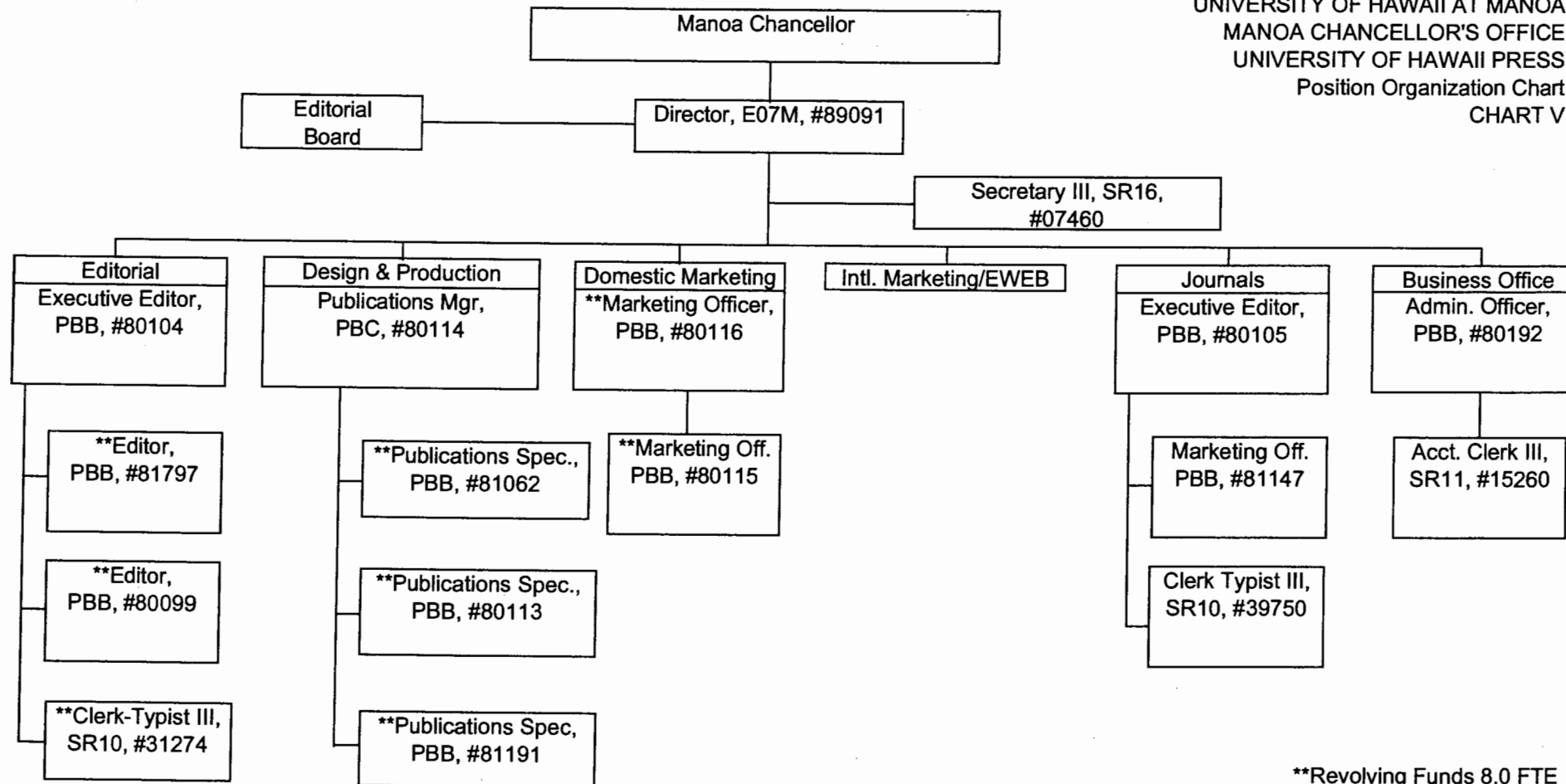


General Fund 10.00 FTE

CHART UPDATED
DATE JUL - 1 2002

Chart Updated July 2002

STATE OF HAWAII
UNIVERSITY OF HAWAII AT MANOA
MANOA CHANCELLOR'S OFFICE
UNIVERSITY OF HAWAII PRESS
Position Organization Chart
CHART V

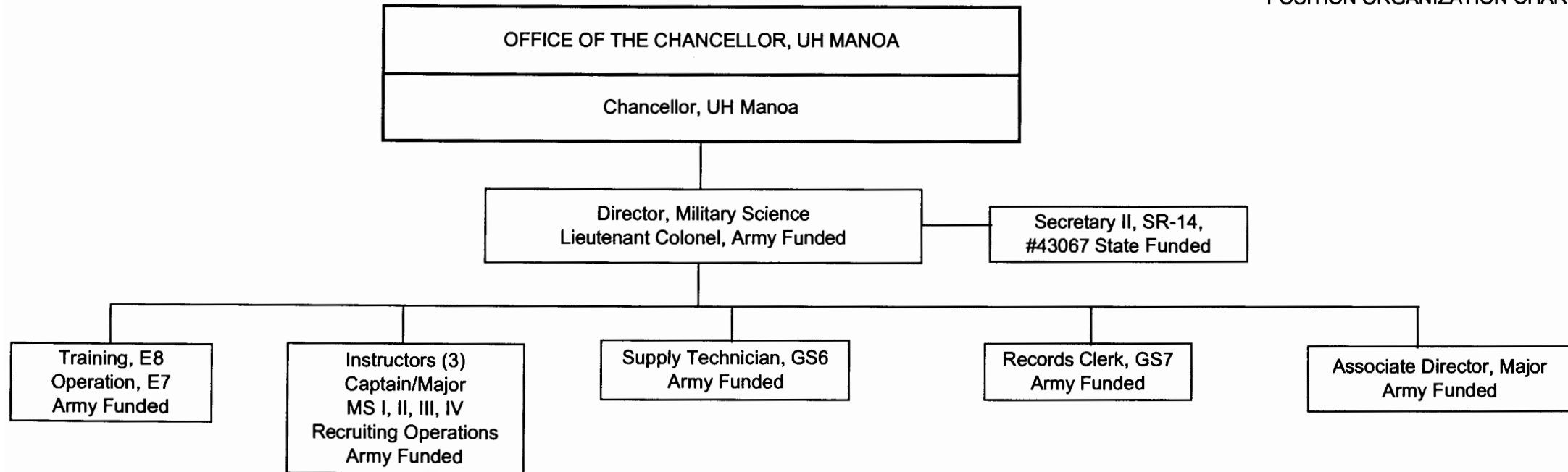


**Revolving Funds 8.0 FTE
General Funds 9.0 FTE

CHART UPDATED
DATE JUL - 1 2002

STATE OF HAWAII
UNIVERSITY OF HAWAII
UNIVERSITY OF HAWAII AT MANOA
OFFICE OF THE CHANCELLOR, UHM
MILITARY SCIENCE PROGRAM

POSITION ORGANIZATION CHART VI



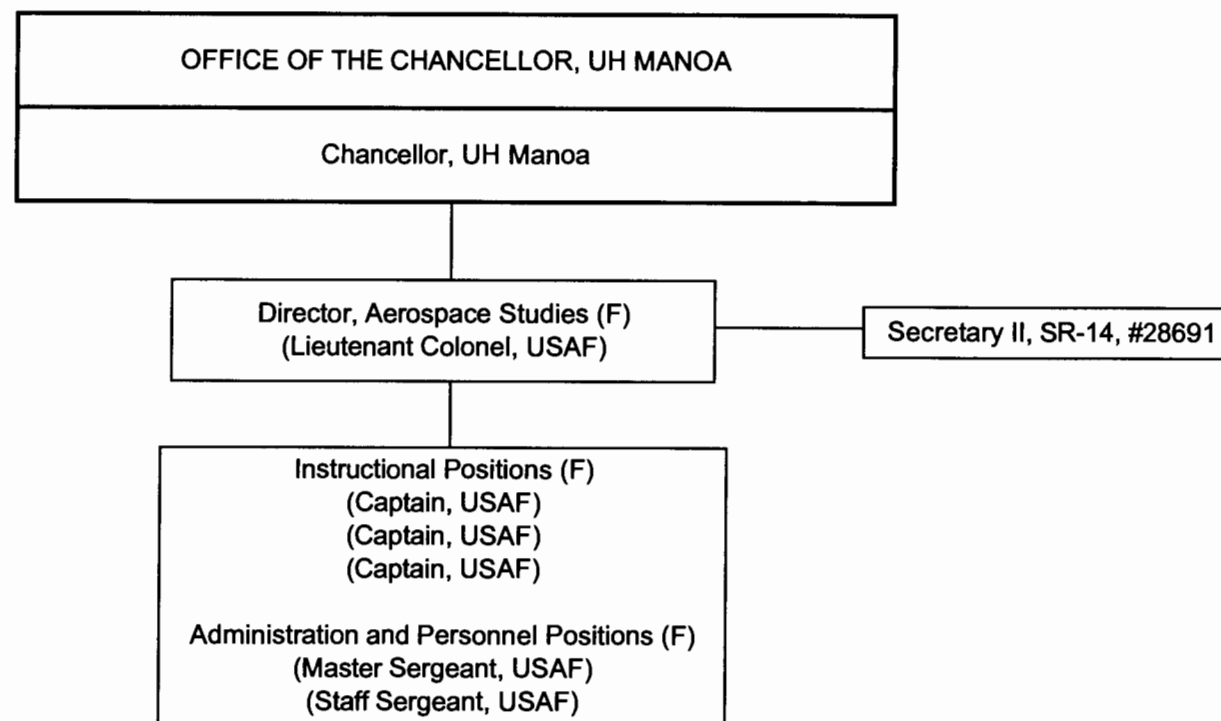
5 Officers
2 Noncommissioned Officers
2 Department of Army Civilians
1 State Employee
10 Total Personnel

General Fund 1.00 FTE

CHART UPDATED
DATE JUL - 1 2002

STATE OF HAWAII
UNIVERSITY OF HAWAII
UNIVERSITY OF HAWAII AT MANOA
OFFICE OF THE CHANCELLOR, UHM
AEROSPACE STUDIES PROGRAM

POSITION ORGANIZATION CHART VII



(F) Personnel funded by the United States Air Force

CHART UPDATED
DATE JUL - 1 2002

General Fund 1.00 FTE