

OFFICE OF THE CHANCELLOR
UH MANOA

OFFICE OF THE DEAN
CHART II

INSTRUCTIONAL UNITS

INSTITUTE FOR TEACHER EDUCATION (CHART III)
EDUCATIONAL ADMINISTRATION (CHART IV)
EDUCATIONAL TECHNOLOGY (CHART V)
COUNSELOR EDUCATION (CHART VI)
EDUCATIONAL FOUNDATIONS (CHART VII)
KINESIOLOGY AND LEISURE SCIENCE (CHART VIII)
SPECIAL EDUCATION (CHART IX)
EDUCATIONAL PSYCHOLOGY (CHART X)
CURRICULUM STUDIES (CHART XIII)

RESEARCH UNITS

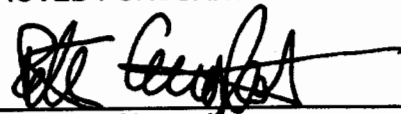
CURRICULUM RESEARCH & DEVELOPMENT GROUP (CHART XI)
CENTER ON DISABILITY STUDIES/UNIVERSITY AFFILIATED PROGRAMS (CHART XII)

APPROVED BY THE UNIVERSITY
BOARD OF REGENTS
SEP 13 2002

Date

STATE OF HAWAII
UNIVERSITY OF HAWAII
UNIVERSITY OF HAWAII AT MĀNOA
COLLEGE OF EDUCATION
POSITION ORGANIZATION CHART
CHART II

APPROVED PURSUANT TO BOARD OF REGENTS' ACTION:


Peter Englert, Chancellor
University of Hawai'i, Mānoa

DATE: NOV 22 2002

OFFICE OF THE DEAN	
Dean	89015

Secretary III, SR-16	00773
Clk-Typist II, SR08	15121 (.50)
Alumni Affairs Specialist	PBB 80321*
Public Information Officer	PBA 80665

ADMINISTRATIVE SERVICES

Director 89046

Secretary II, SR-14 00782
Acct. Clerk III, SR-11 16836

Admin. Officer PBB 80167
Admin. Officer PBB 81738
Admin. Officer PBB 80166
Admin. Officer PBB 80488
Admin. Officer PBA 81440

STUDENT SERVICES

Asst. Dean 89000

Secretary II, SR-14 15270
Clk-Typist II, SR-08 19558
Clk-Typist II, SR-08 45198

Faculty Positions (4.25)

83450, 84670, 85261, 85263
85294 (0.25)

ACADEMIC AFFAIRS

Assoc. Dean 89034

Secretary II, SR-14 15269

RESEARCH

Assoc. Dean 89257

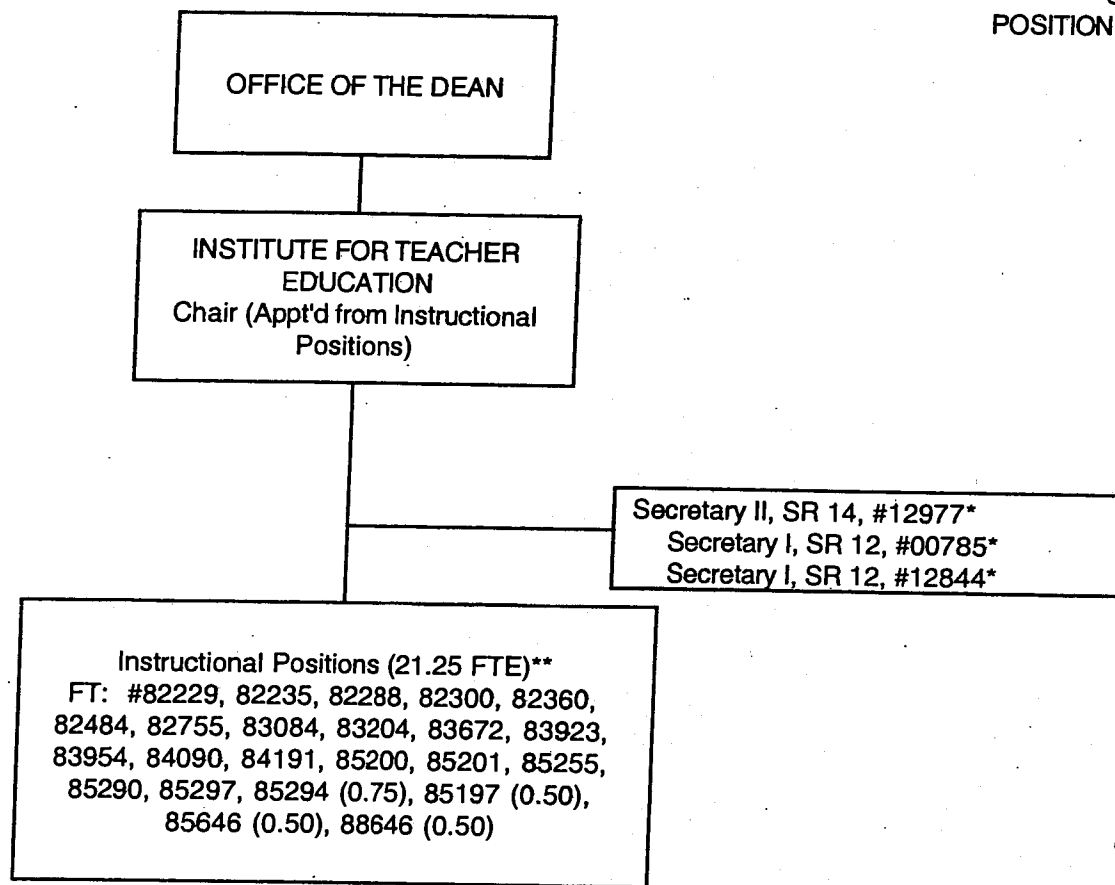
Secretary II, SR-14 45517

OUTREACH PROGRAMS

Director (Appt'd. from Instructional Positions)

Secretary I, SR-12 112736

STATE OF HAWAII/UNIVERSITY OF HAWAII
UNIVERSITY OF HAWAII AT MANOA
COLLEGE OF EDUCATION
POSITION ORGANIZATION CHART - CHART III



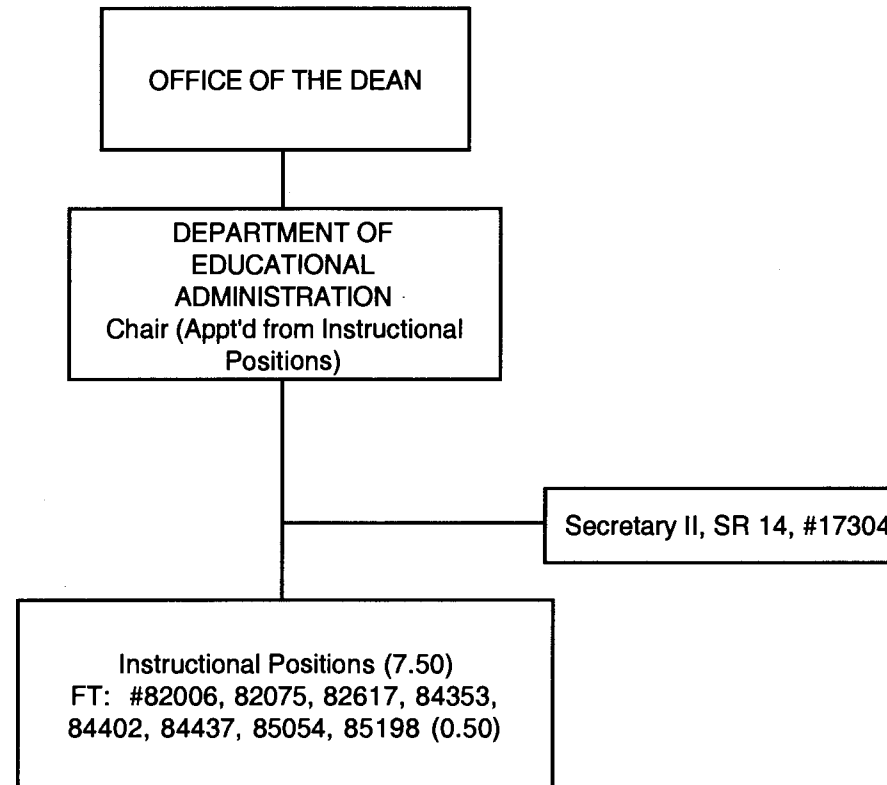
APPROVED BY THE UNIVERSITY
BOARD OF REGENTS
SEP 13 2002

Date

**Additional 5.50 FTE to be provided in accordance with approved College of Education
Neighbor Island Outreach Plan

*To be redescribed

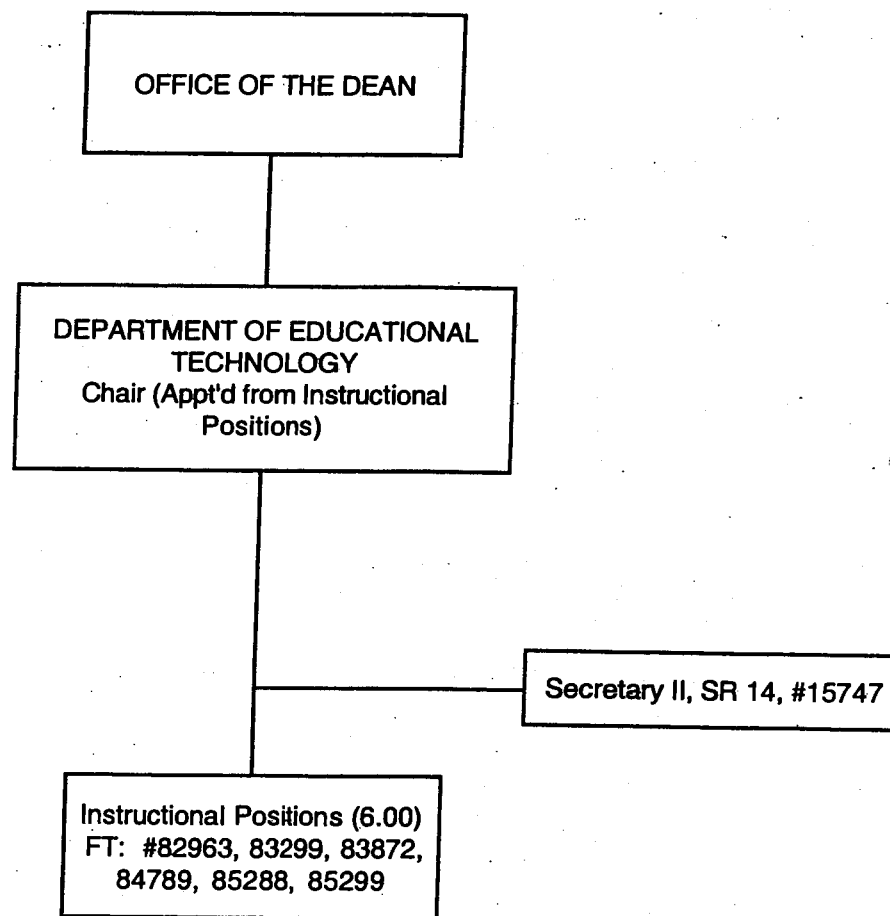
STATE OF HAWAII/UNIVERSITY OF HAWAII
UNIVERSITY OF HAWAII AT MANOA
COLLEGE OF EDUCATION
POSITION ORGANIZATION CHART - CHART IV



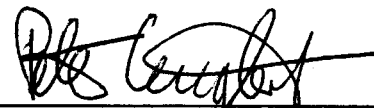
General Funds 8.50

CHART UPDATED
DATE JUL - 1 2002

STATE OF HAWAII/UNIVERSITY OF HAWAII
UNIVERSITY OF HAWAII AT MANOA
COLLEGE OF EDUCATION
POSITION ORGANIZATION CHART - CHART V

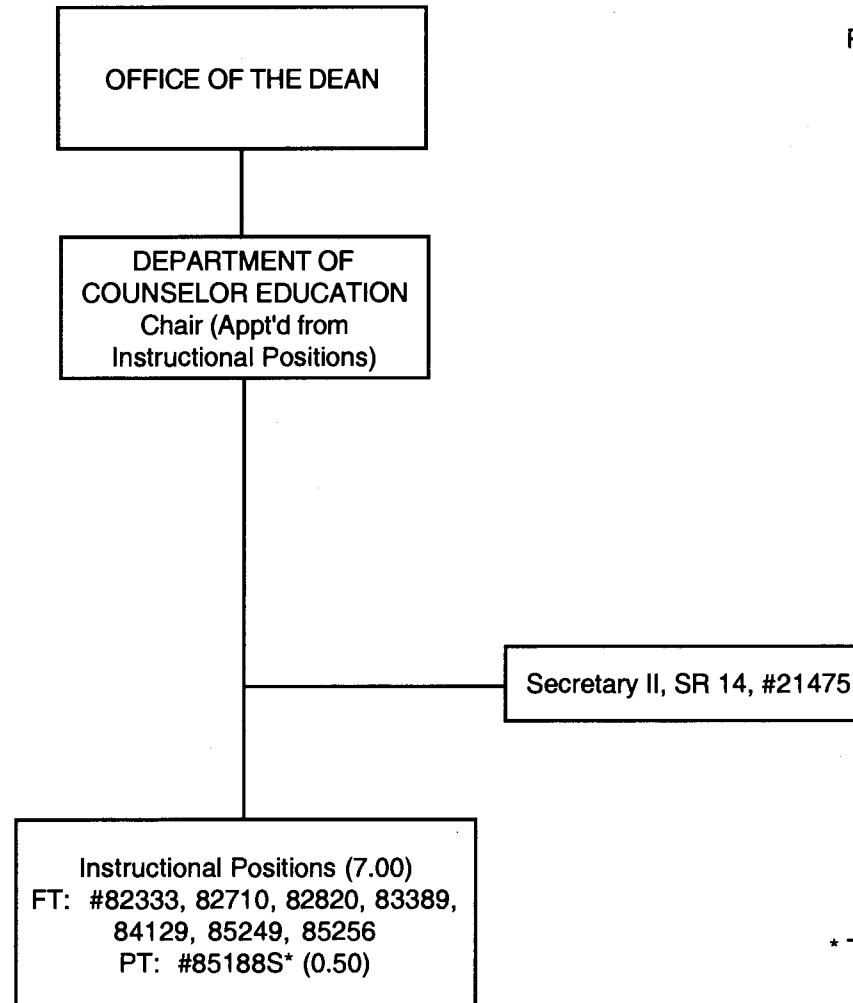


Approved Pursuant to Board of Regents Action


Peter Englert, Chancellor

09/13/02

STATE OF HAWAII/UNIVERSITY OF HAWAII
UNIVERSITY OF HAWAII AT MANOA
COLLEGE OF EDUCATION
POSITION ORGANIZATION CHART - CHART VI

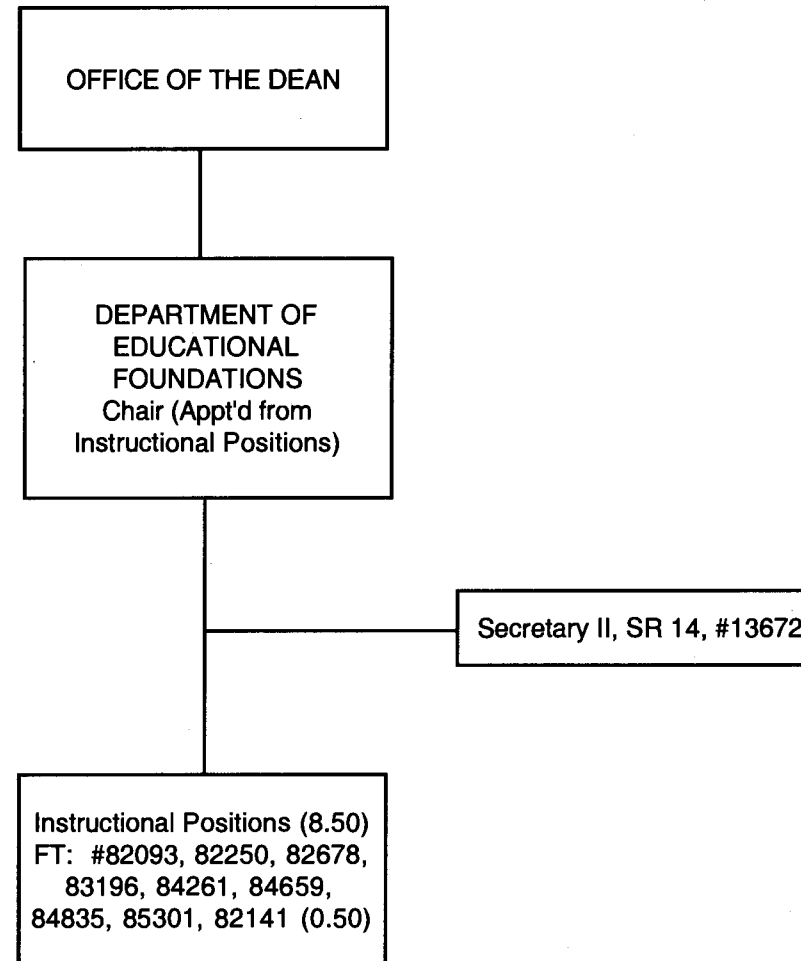


* Temp Grad Asst Position

General Funds 8.00

CHART UPDATED
DATE JUL - 1 2002

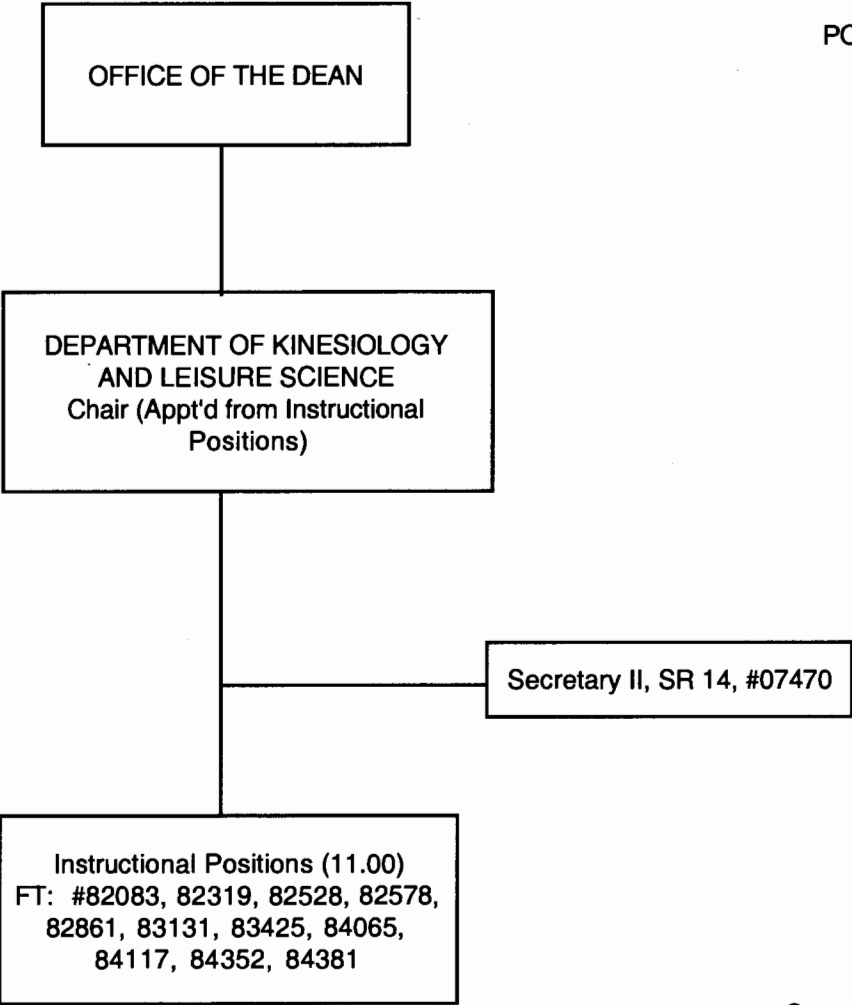
STATE OF HAWAII/UNIVERSITY OF HAWAII
UNIVERSITY OF HAWAII AT MANOA
COLLEGE OF EDUCATION
POSITION ORGANIZATION CHART - CHART VII



General Funds 9.50

CHART UPDATED
DATE JUL - 1 2002

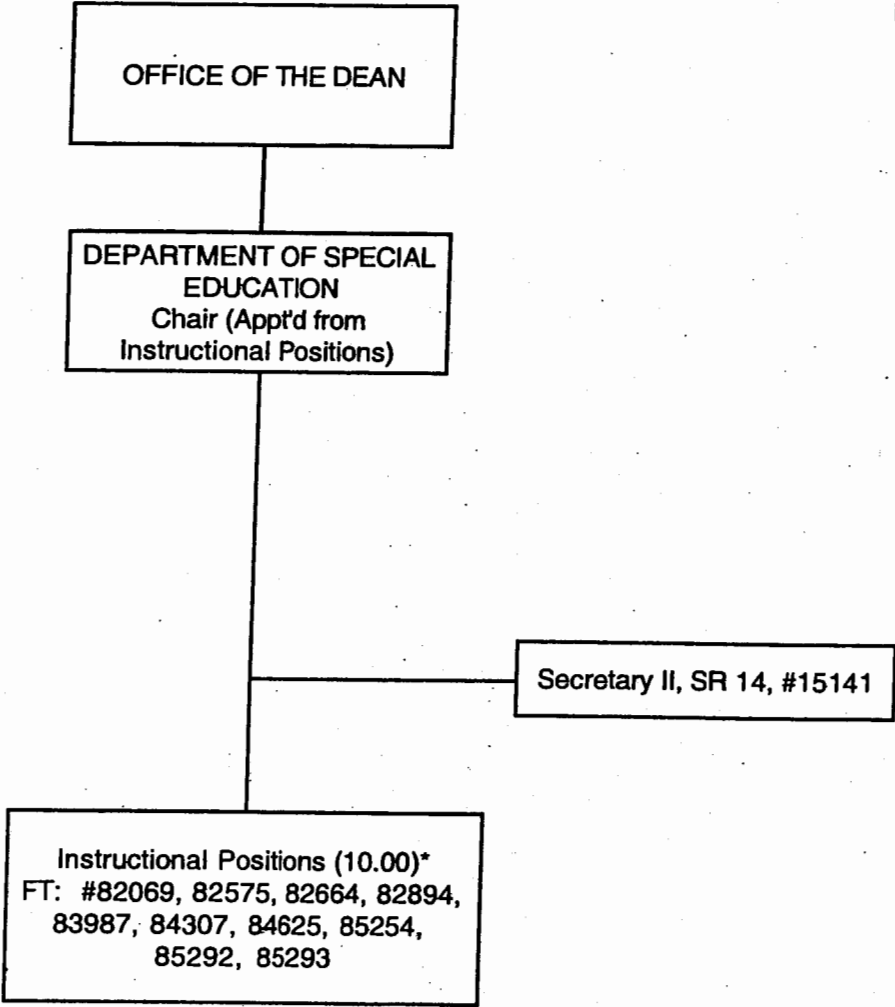
STATE OF HAWAII/UNIVERSITY OF HAWAII
UNIVERSITY OF HAWAII AT MANOA
COLLEGE OF EDUCATION
POSITION ORGANIZATION CHART - CHART VIII



General Funds 12.00

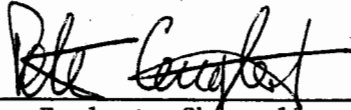
CHART UPDATED
DATE JUL - 1 2002

STATE OF HAWAII/UNIVERSITY OF HAWAII
UNIVERSITY OF HAWAII AT MANOA
COLLEGE OF EDUCATION
POSITION ORGANIZATION CHART - CHART IX



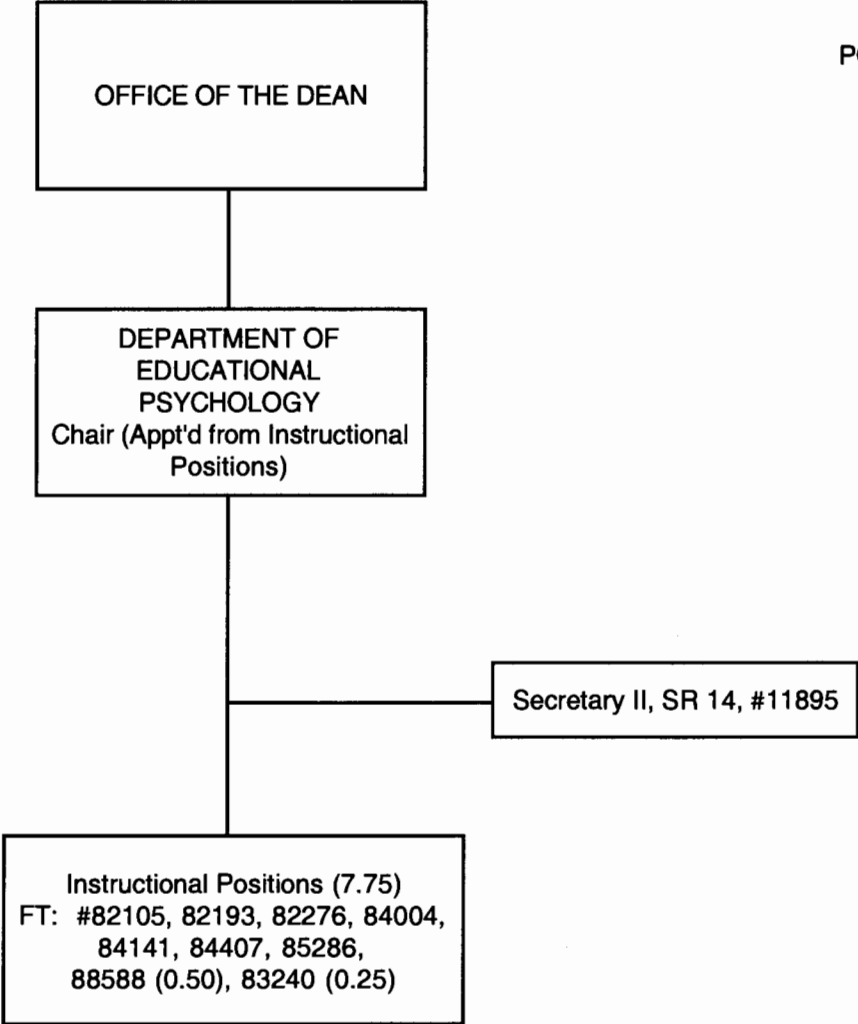
*Additional 3.50 FTE to be provided in accordance with approved College of Education Neighbor Island Outreach Plan

Approved Pursuant to Board of Regents Action


Peter Englert, Chancellor

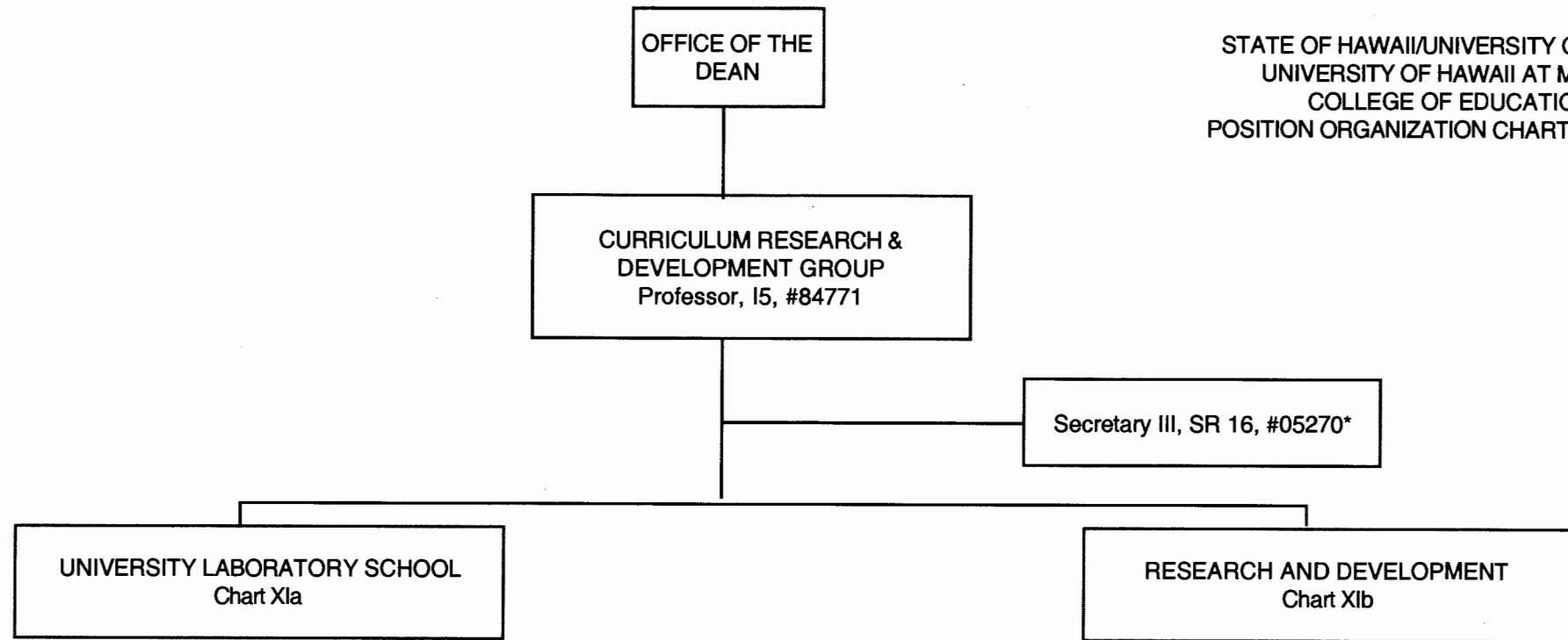
09/13/02

STATE OF HAWAII/UNIVERSITY OF HAWAII
UNIVERSITY OF HAWAII AT MANOA
COLLEGE OF EDUCATION
POSITION ORGANIZATION CHART - CHART X



General Funds 8.75

CHART UPDATED
DATE JUL - 1 2002

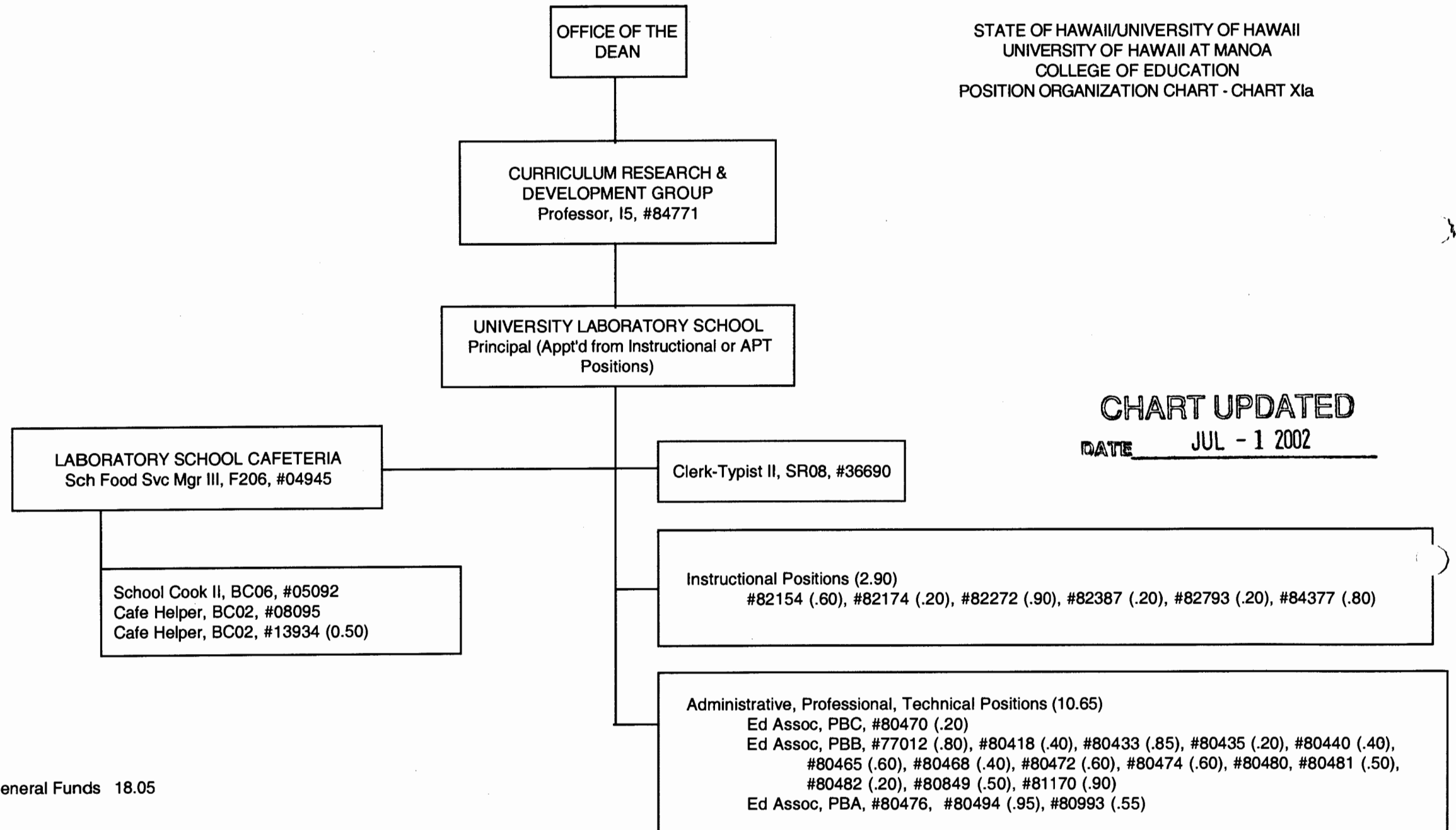


Total General Funds 43.00
Lab School 18.05
Research & Development 22.95

*To be redescribed

CHART UPDATED
DATE JUL - 1 2002

STATE OF HAWAII/UNIVERSITY OF HAWAII
UNIVERSITY OF HAWAII AT MANOA
COLLEGE OF EDUCATION
POSITION ORGANIZATION CHART - CHART XIa



OFFICE OF THE
DEAN

CURRICULUM RESEARCH &
DEVELOPMENT GROUP
Professor, I5, #84771

STATE OF HAWAII/UNIVERSITY OF HAWAII
UNIVERSITY OF HAWAII AT MANOA
COLLEGE OF EDUCATION
POSITION ORGANIZATION CHART - CHART XIb

RESEARCH AND DEVELOPMENT

Instructional Positions (8.60)

Full-time: #82160, #82950, #83951, #84077, #84608

Part-time: #82154 (.40), #82174 (.80), #82272 (.10), #82387 (.80), #82793 (.80), #84377 (.20), #85236 (.50)

Administrative, Professional, Technical Positions (13.35)

Ed Assoc, PBD, #80486

Ed Assoc, PBC, #80470 (.80), #80495

Ed Assoc, PBB, #77012 (.20), #80228, #80418 (.60), #80433 (.15), #80435 (0.80), #80440 (.60), #80443,

#80465 (.40), #80468 (.60), #80472 (.40), #80474 (.40), #80481 (.50), #80482 (.80),

#80491, #80849 (.50), #81170 (.10)

Ed Assoc, PBA, #80494 (.05), #80993 (.45)

Ed Spec, PBB, #80420

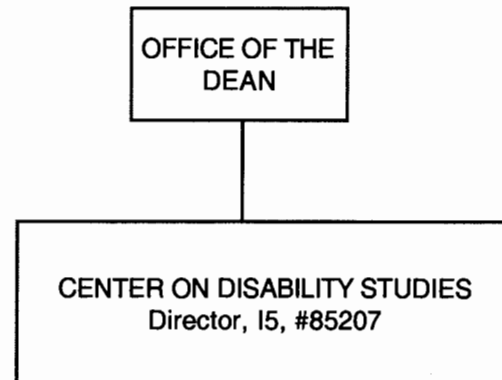
Clerk-Typist III, SR10, #35206

General Funds 22.95

CHART UPDATED

DATE JUL - 1 2002

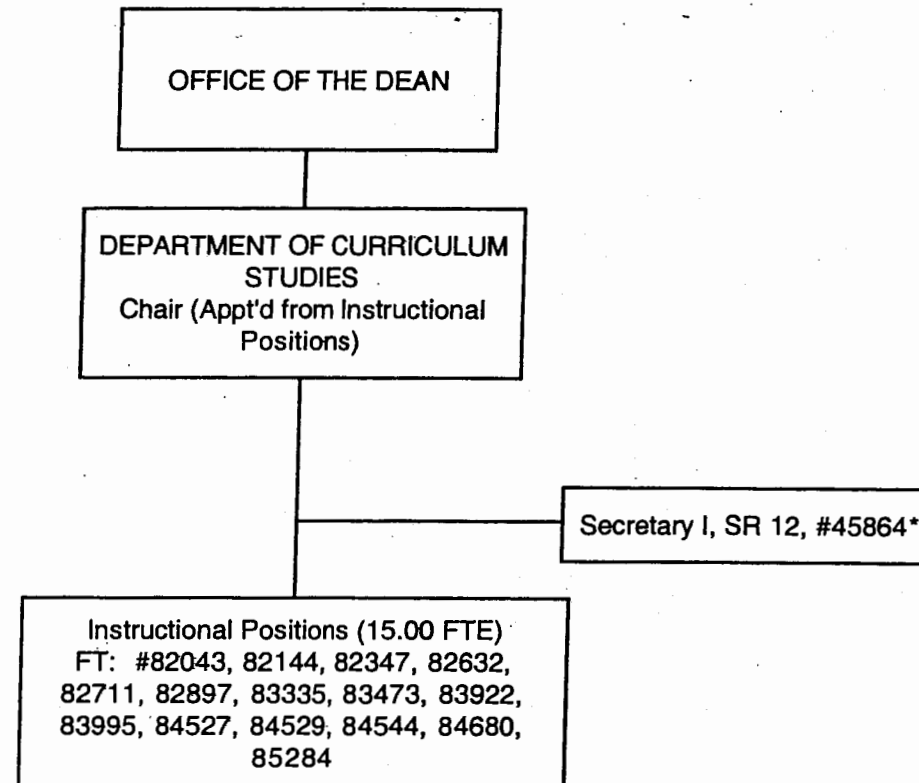
STATE OF HAWAII/UNIVERSITY OF HAWAII
UNIVERSITY OF HAWAII AT MANOA
COLLEGE OF EDUCATION
POSITION ORGANIZATION CHART - CHART XII



General Funds 1.00

CHART UPDATED
DATE JUL - 1 2002

STATE OF HAWAII/UNIVERSITY OF HAWAII
UNIVERSITY OF HAWAII AT MANOA
COLLEGE OF EDUCATION
POSITION ORGANIZATION CHART - CHART XIII

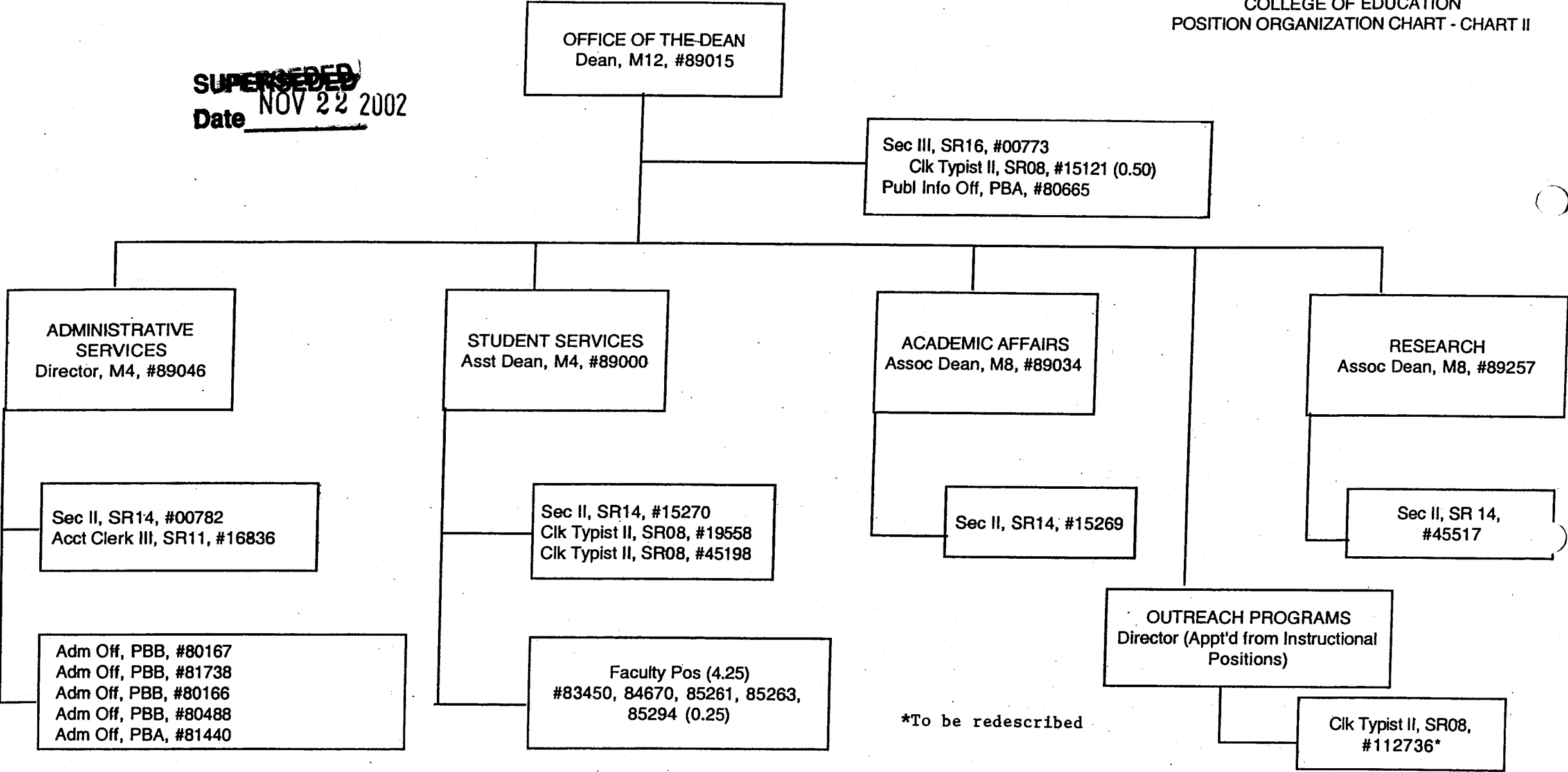


APPROVED BY THE UNIVERSITY
BOARD OF REGENTS
SEP 13 2002
Date

*To be redescribed

STATE OF HAWAII/UNIVERSITY OF HAWAII
UNIVERSITY OF HAWAII AT MANOA
COLLEGE OF EDUCATION
POSITION ORGANIZATION CHART - CHART II

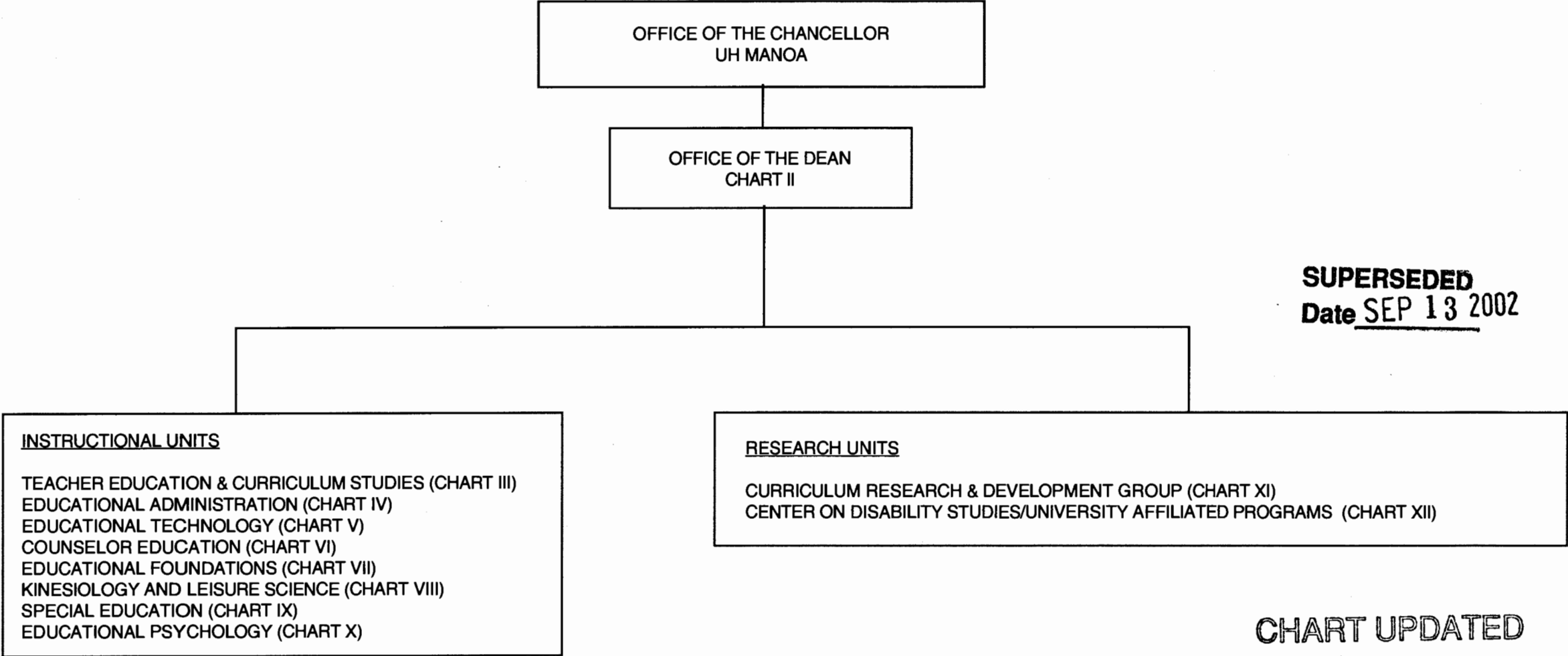
~~SUPERSEDED~~
Date NOV 22 2002



Approved Pursuant to Board of Regents Action

Peter Englert, Chancellor

09/13/02

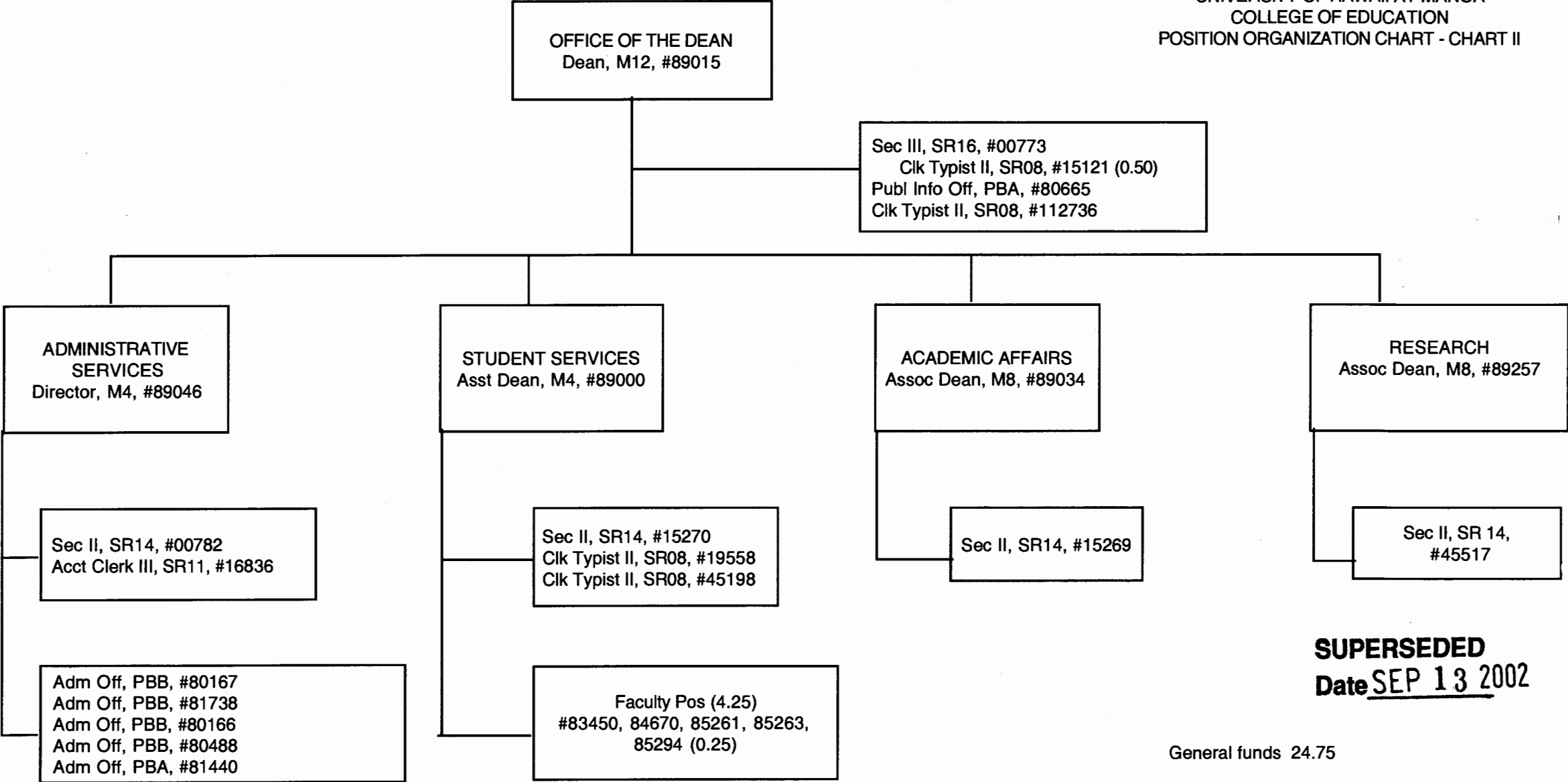


SUPERSEDED
Date SEP 13 2002

General Funds 177.75

CHART UPDATED
DATE JUL - 1 2002

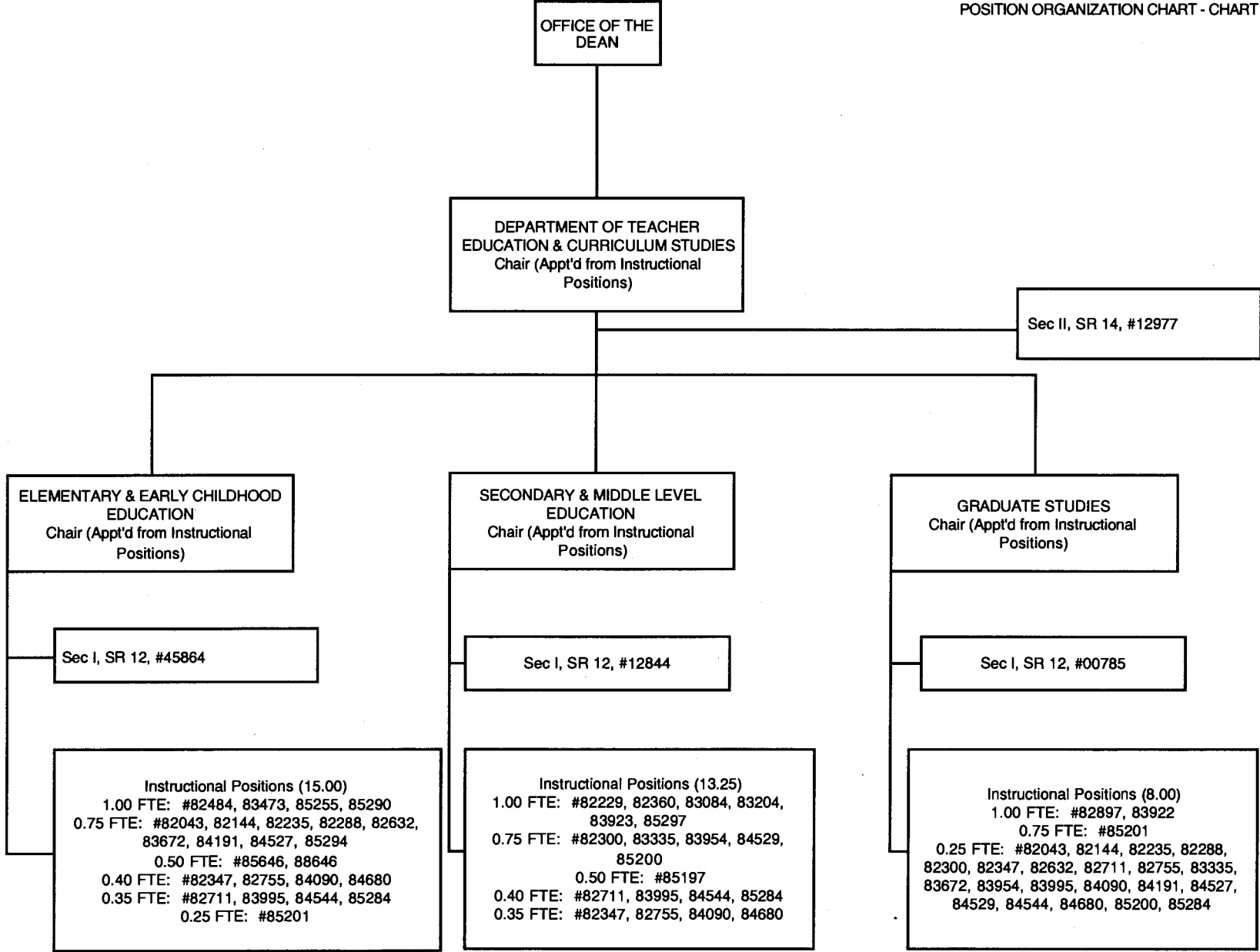
STATE OF HAWAII/UNIVERSITY OF HAWAII
UNIVERSITY OF HAWAII AT MANOA
COLLEGE OF EDUCATION
POSITION ORGANIZATION CHART - CHART II



SUPERSEDED
Date SEP 13 2002

General funds 24.75

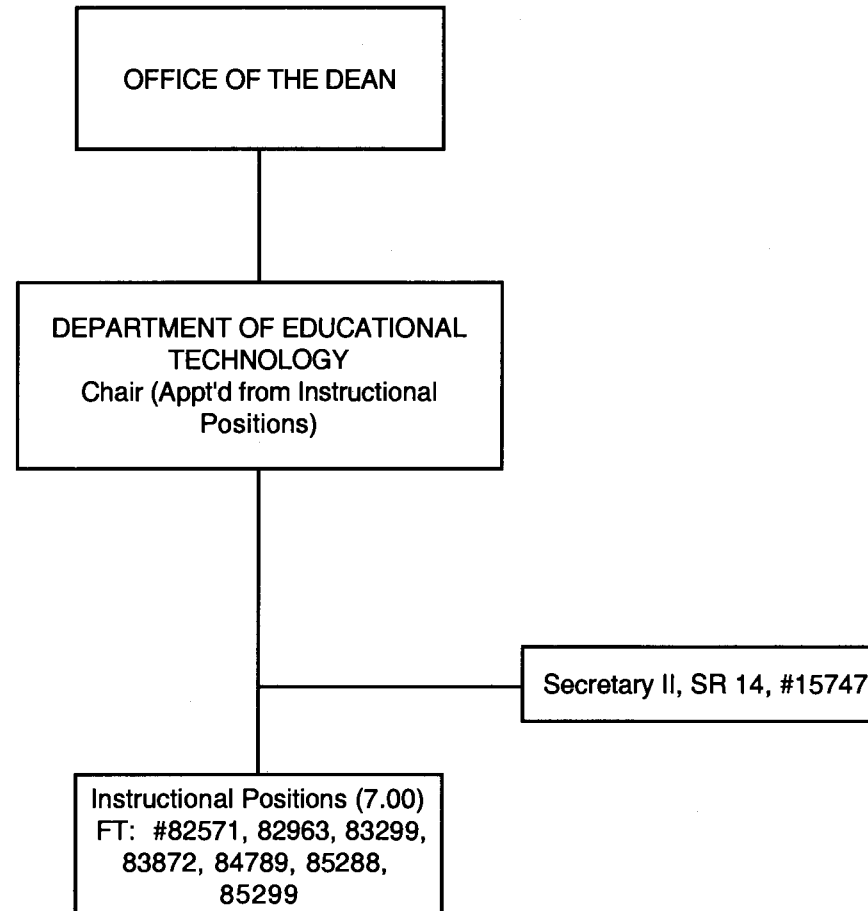
CHART UPDATED
DATE JUL - 1 2002



SUPERSEDED
Date SEP 13 2002

CHART UPDATED
DATE JUL - 1 2002

STATE OF HAWAII/UNIVERSITY OF HAWAII
UNIVERSITY OF HAWAII AT MANOA
COLLEGE OF EDUCATION
POSITION ORGANIZATION CHART - CHART V

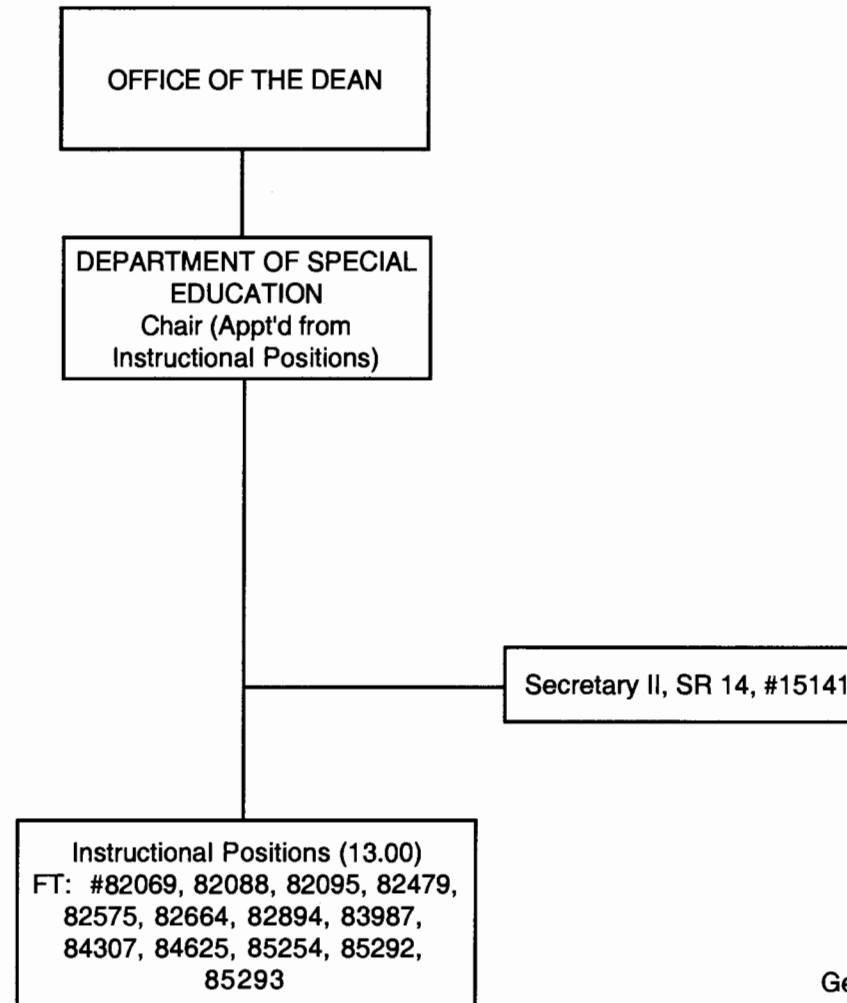


SUPERSEDED
Date SEP 13 2002

CHART UPDATED
DATE JUL - 1 2002

General Funds 8.00

STATE OF HAWAII/UNIVERSITY OF HAWAII
UNIVERSITY OF HAWAII AT MANOA
COLLEGE OF EDUCATION
POSITION ORGANIZATION CHART - CHART IX



SUPERSEDED
Date SEP 13 2002

General Funds 14.00

CHART UPDATED
DATE JUL - 1 2002