

STATE OF HAWAII
UNIVERSITY OF HAWAII
UNIVERSITY OF HAWAII AT MANOA
OFFICE OF THE CHANCELLOR
FACILITIES, GROUNDS, AND SAFETY
CHART VII

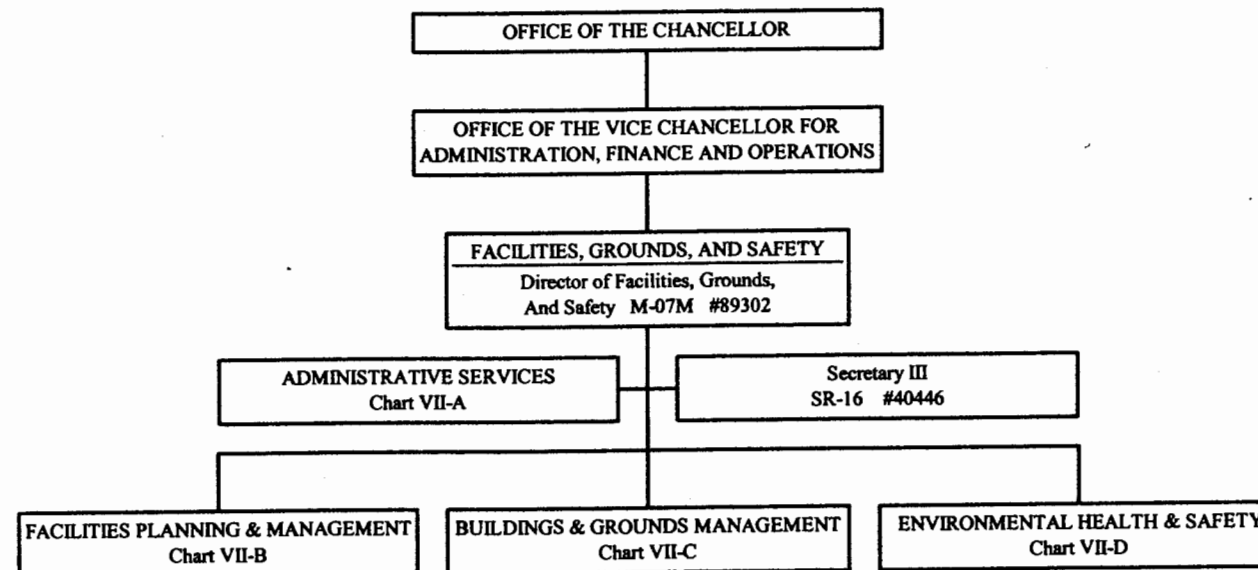


CHART UPDATED
DATE JUL - 1 2002

STATE OF HAWAII
UNIVERSITY OF HAWAII
UNIVERSITY OF HAWAII AT MANOA
OFFICE OF THE CHANCELLOR
FACILITIES, GROUNDS, AND SAFETY
CHART VII-A

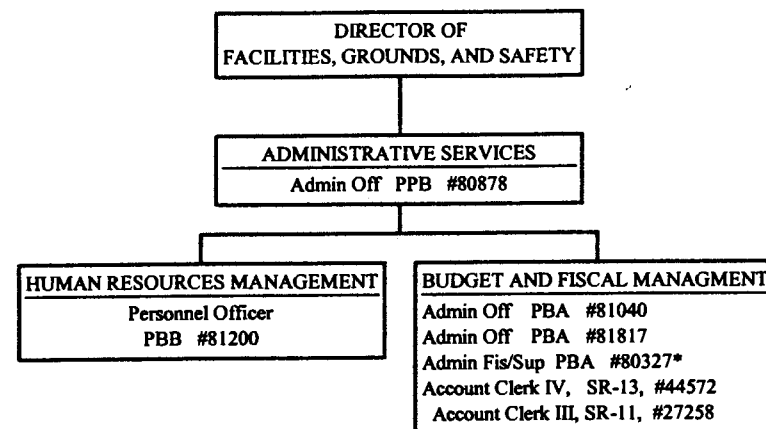


CHART UPDATED
DATE JUL - 1 2002

Position Count: 7.00
General Fund

*To be redescribed

STATE OF HAWAII
UNIVERSITY OF HAWAII
UNIVERSITY OF HAWAII AT MANOA
OFFICE OF THE CHANCELLOR
FACILITIES, GROUNDS, & SAFETY
FACILITIES PLANNING AND MGMT OFFICE
CHART VII-B

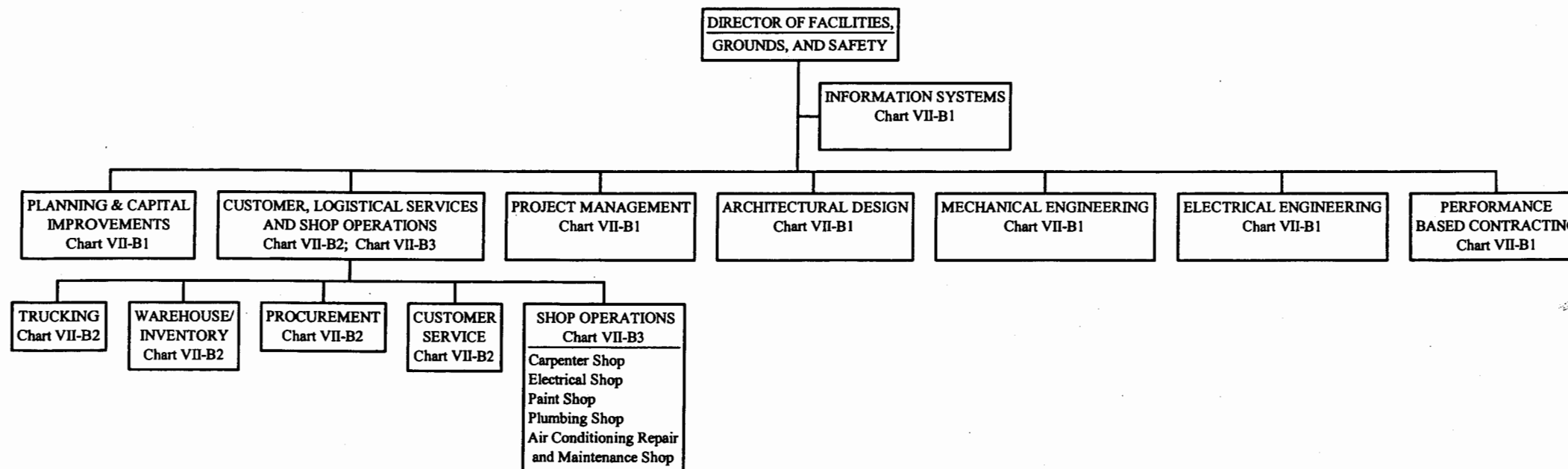
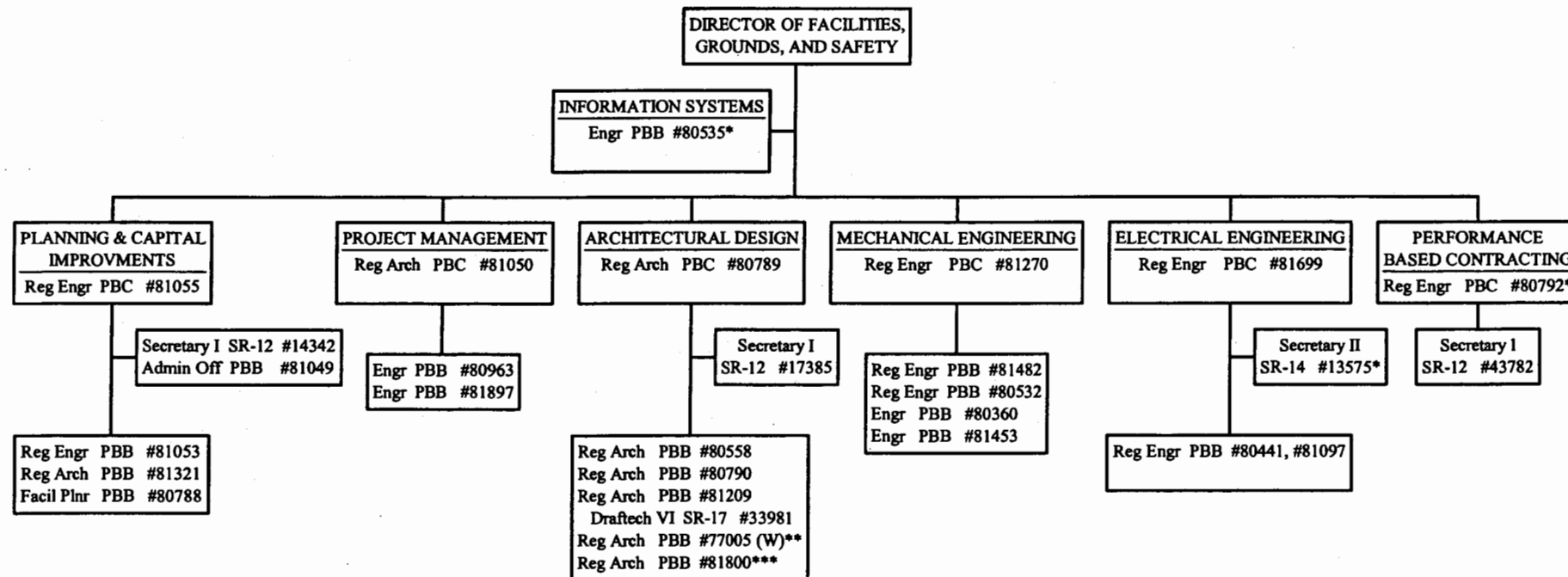


CHART UPDATED
DATE JUL 19 2002

STATE OF HAWAII
UNIVERSITY OF HAWAII
UNIVERSITY OF HAWAII AT MANOA
OFFICE OF THE CHANCELLOR
FACILITIES, GROUNDS, AND SAFETY
FACILITIES PLANNING AND MGMT OFFICE
CHART VII-B1



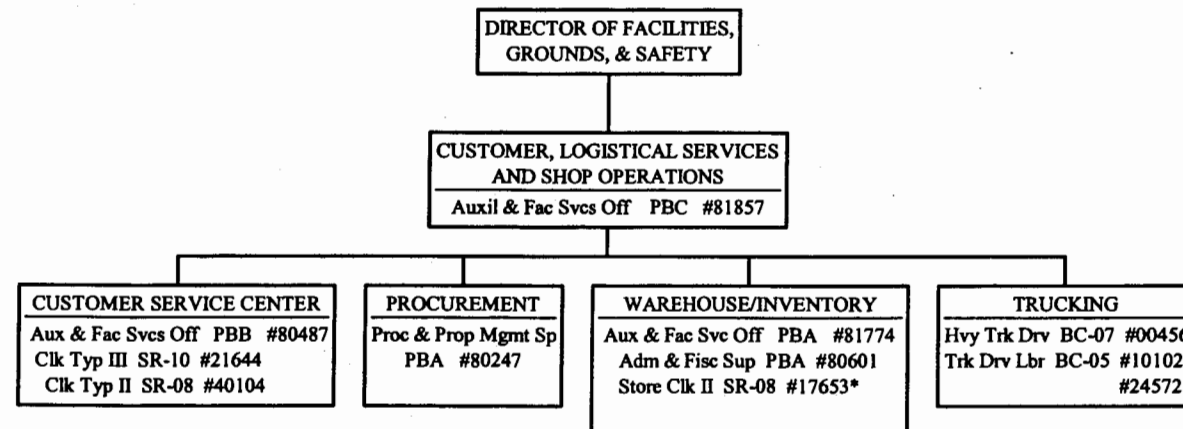
*To be redescribed

CHART UPDATED
DATE JUL 19 2002

General Funds 27.00
(W) Revolving Funds 1.00 (**Not
included in our position count, position belongs
to and funded by Student Hsg.)

***1.00 Not included in our position count,
position belongs to and funded by EEO.

STATE OF HAWAII
 UNIVERSITY OF HAWAII
 UNIVERSITY OF HAWAII AT MANOA
 OFFICE OF THE CHANCELLOR
 FACILITIES, GROUNDS, AND SAFETY
 FACILITIES PLANNING AND MGMT OFFICE
 CHART VII-B2

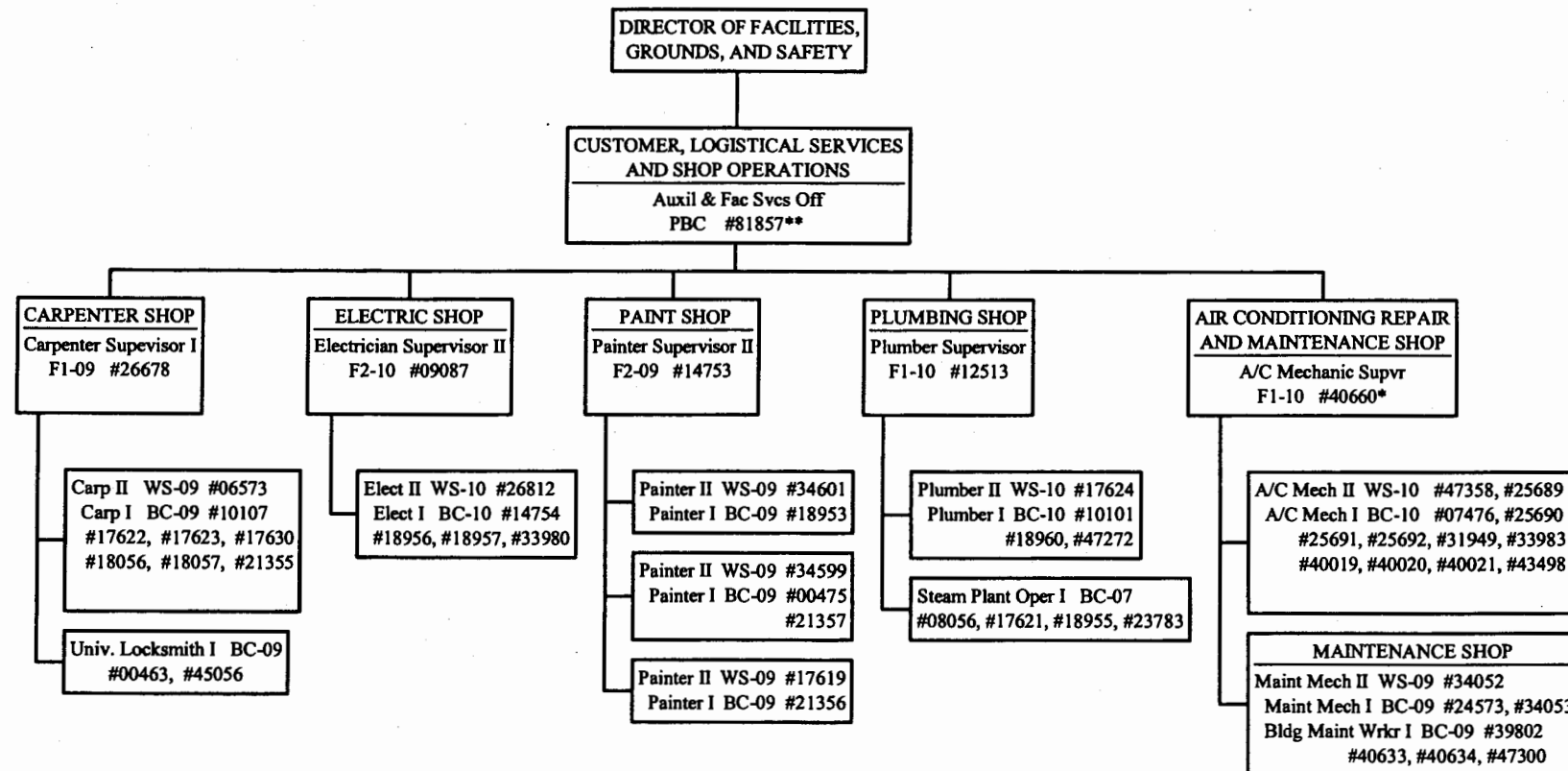


*To be resdescribed

General Funds 11.00

CHART UPDATED
 DATE JUL 19 2002

STATE OF HAWAII
UNIVERSITY OF HAWAII
UNIVERSITY OF HAWAII AT MANOA
OFFICE OF THE CHANCELLOR
FACILITIES, GROUNDS, AND SAFETY
FACILITIES PLANNING AND MGMT OFFICE
CHART VII-B3

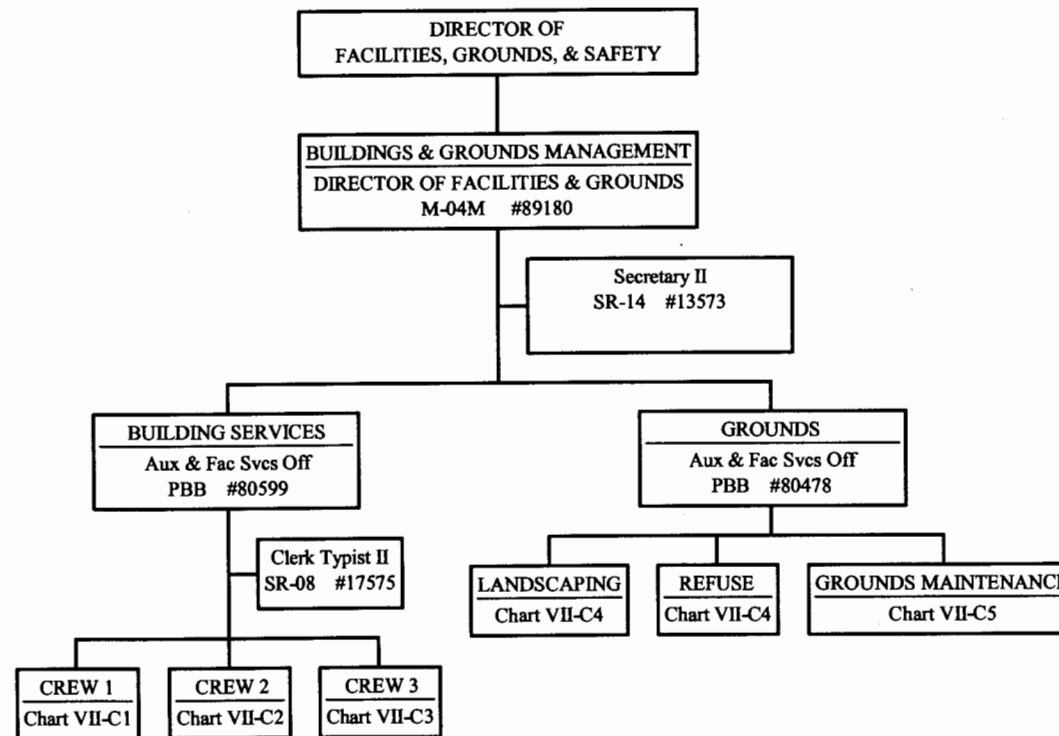


*To be redescribed

General Funds 54.00
**Position count not included on this page.

CHART UPDATED
DATE JUL 19 2002

STATE OF HAWAII
 UNIVERSITY OF HAWAII
 UNIVERSITY OF HAWAII AT MANOA
 OFFICE OF THE CHANCELLOR
 FACILITIES, GROUNDS, AND SAFETY
 BUILDINGS & GROUNDS MANAGEMENT
 CHART VII-C

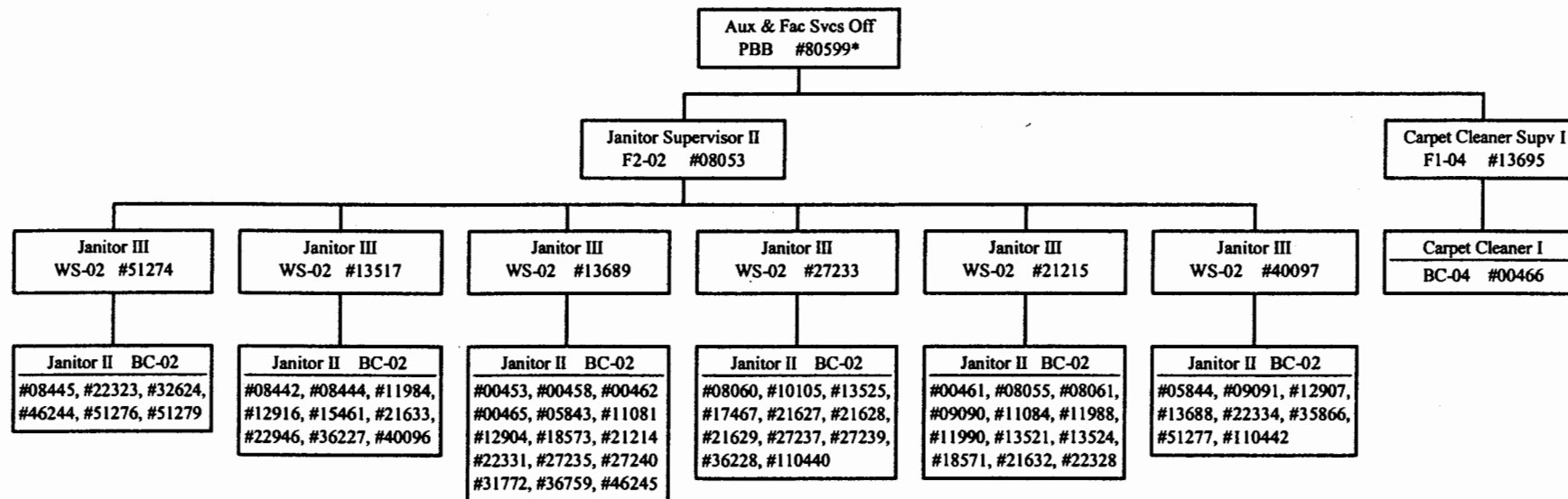


General Funds 5.00

CHART UPDATED
 DATE JUL - 1 2002

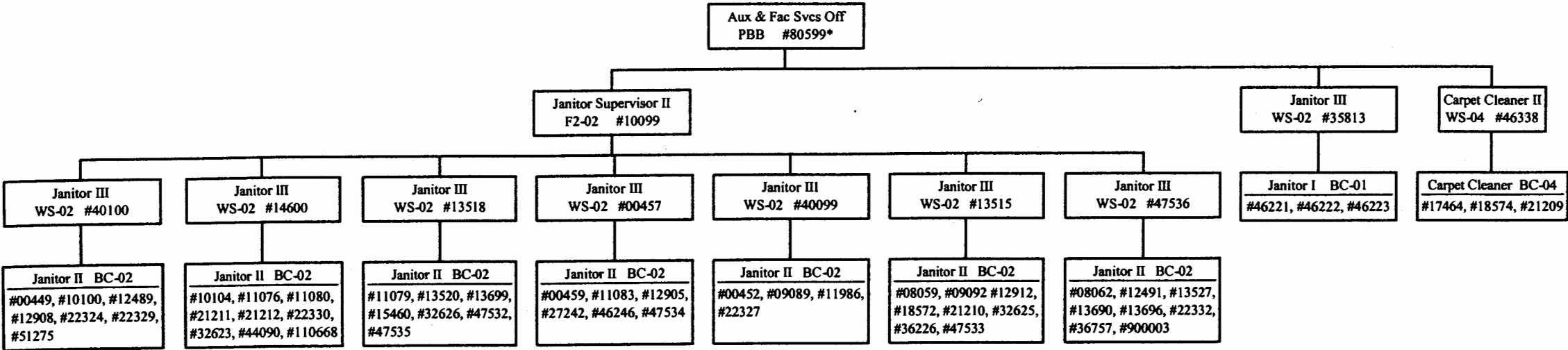
CREW I

STATE OF HAWAII
UNIVERSITY OF HAWAII
UNIVERSITY OF HAWAII AT MANOA
OFFICE OF THE CHANCELLOR
FACILITIES, GROUNDS, AND SAFETY
BUILDINGS & GROUNDS MANAGEMENT
CHART VII-C1



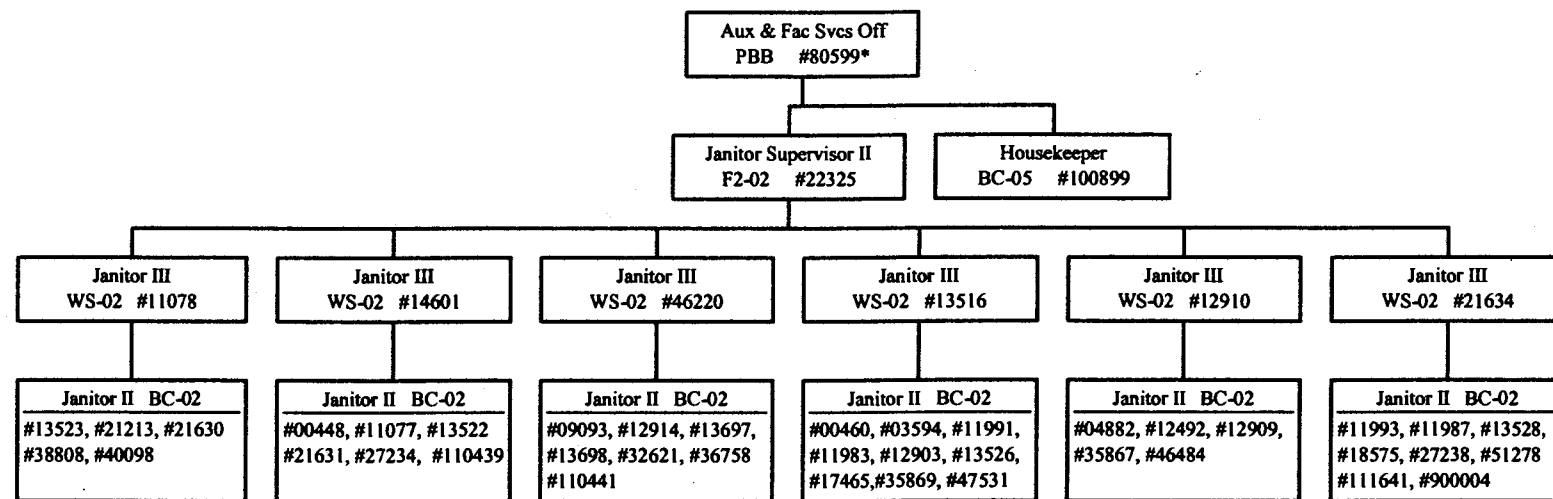
General Funds 70.00
(*Position count not included on
this page)

CHART UPDATED
DATE JUL - 1 2002



General Funds 65.00
(*Position count not included on this page)

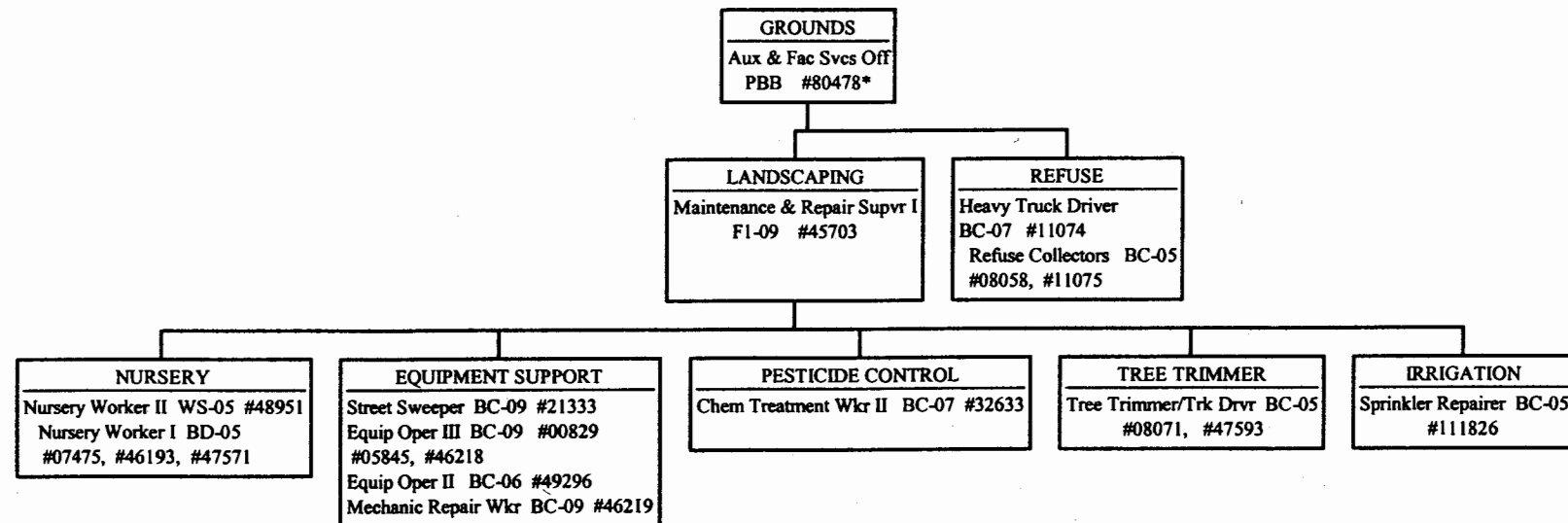
CHART UPDATED
DATE JUL - 1 2002



General Funds 48.00
(*Position count not included on this page)

CHART UPDATED
DATE JUL - 1 2002

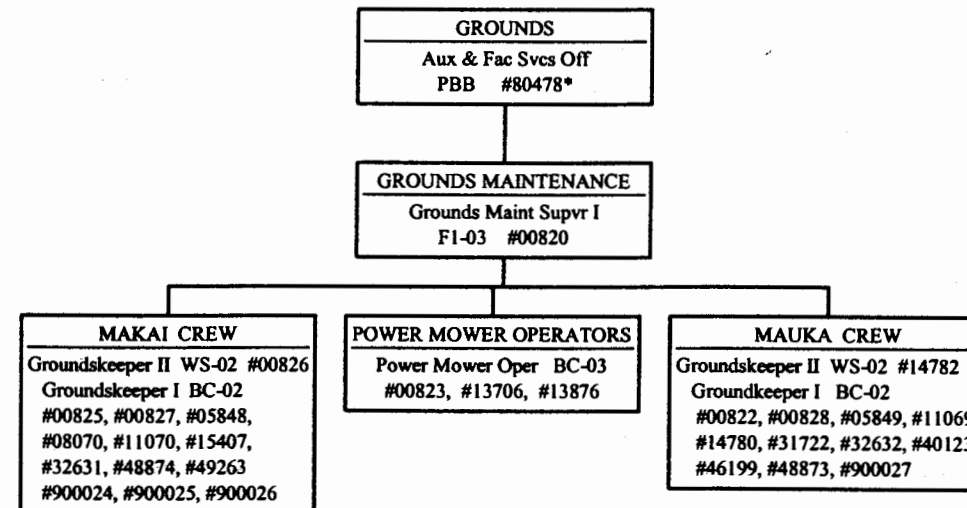
STATE OF HAWAII
UNIVERSITY OF HAWAII
UNIVERSITY OF HAWAII AT MANOA
OFFICE OF THE CHANCELLOR
FACILITIES, GROUNDS, & SAFETY
BUILDINGS & GROUNDS MANAGEMENT
CHART VII-C4



Position counts from vacancy pool to be established using
abolished positions:
#8054 (1.00); #12915 (1.00); #32629 (1.00)
#33984 (1.00); #48935 (1.00)

General Funds 23.00
(* Position count not included on this page)

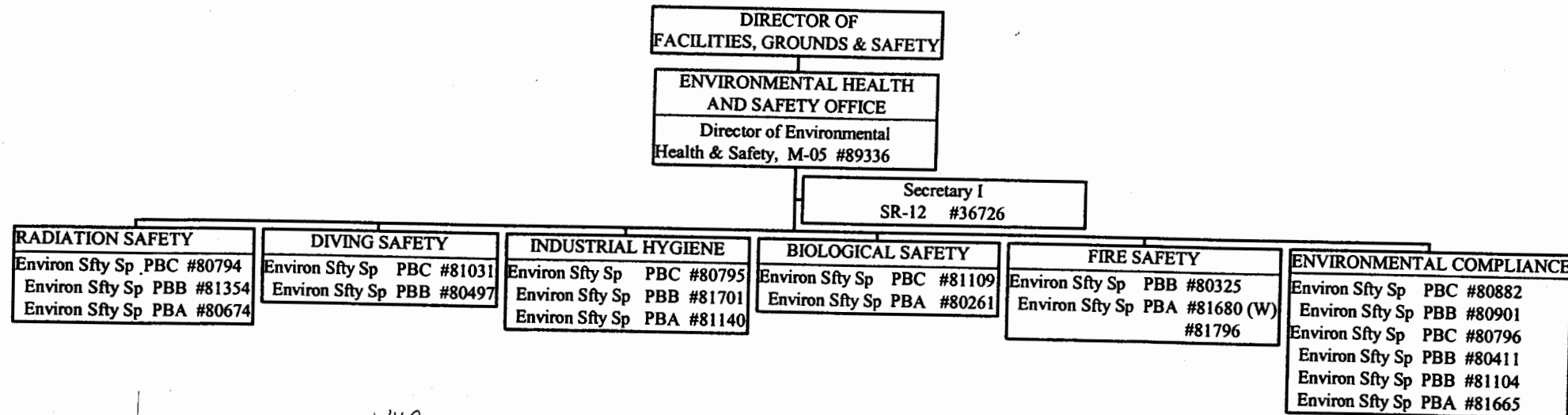
CHART UPDATED
DATE JUL - 1 2002



General Funds 29.00
(*Position count not included on this page)

CHART UPDATED
DATE JUL - 1 2002

STATE OF HAWAII
 UNIVERSITY OF HAWAII
 UNIVERSITY OF HAWAII AT MANOA
 OFFICE OF THE CHANCELLOR
 FACILITIES, GROUNDS, & SAFETY
 ENVIRONMENTAL HEALTH & SAFETY OFFICE
 CHART VII-D



80795 IS VILLO
 PBB NOT PBC
 Roy TAKAGAWA He
 WILL SPEAK TO BRADA.
 Nov. 12, 02

CHART UPDATED
 DATE JUL - 1 2002

General Funds 20.00
 (W) Revolving Funds 1.00 (Not
 included in our position count,
 position belongs to Student Hsg)