

STATE OF HAWAII
UNIVERSITY OF HAWAII
UNIVERSITY OF HAWAII AT MĀNOA
INSTITUTE FOR ASTRONOMY
CHART I

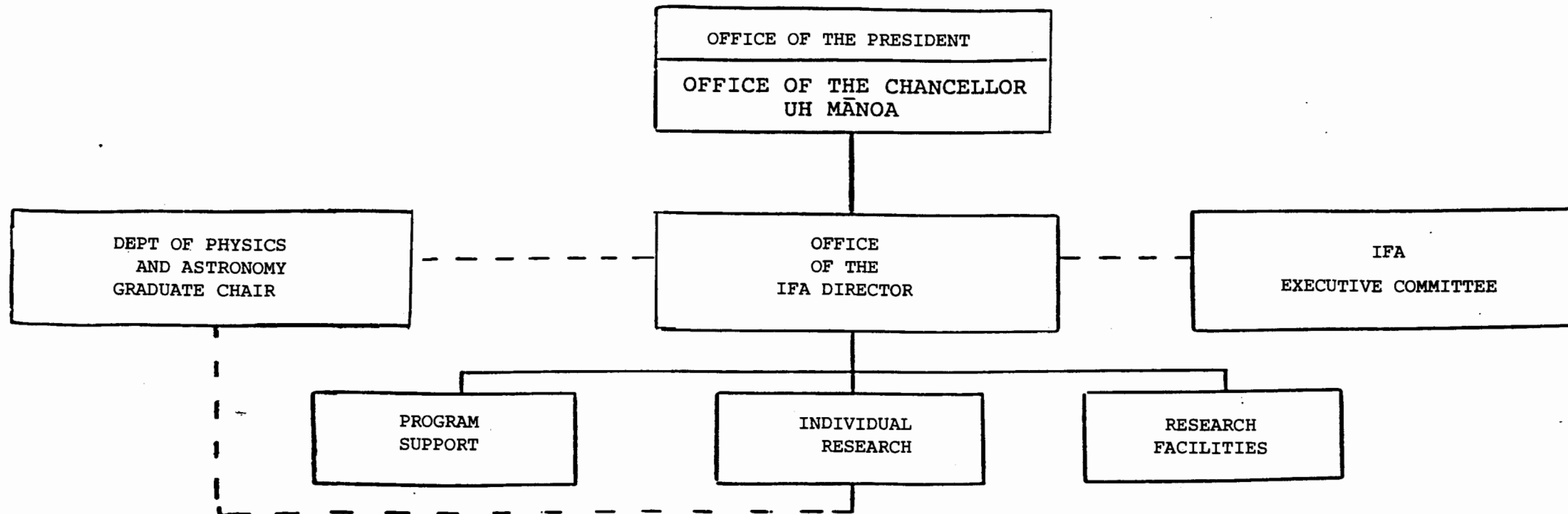


CHART UPDATED
DATE JUL - 1 2002

STATE OF HAWAII
UNIVERSITY OF HAWAII
UNIVERSITY OF HAWAII AT MĀNOA

INSTITUTE FOR ASTRONOMY
CHART 1A

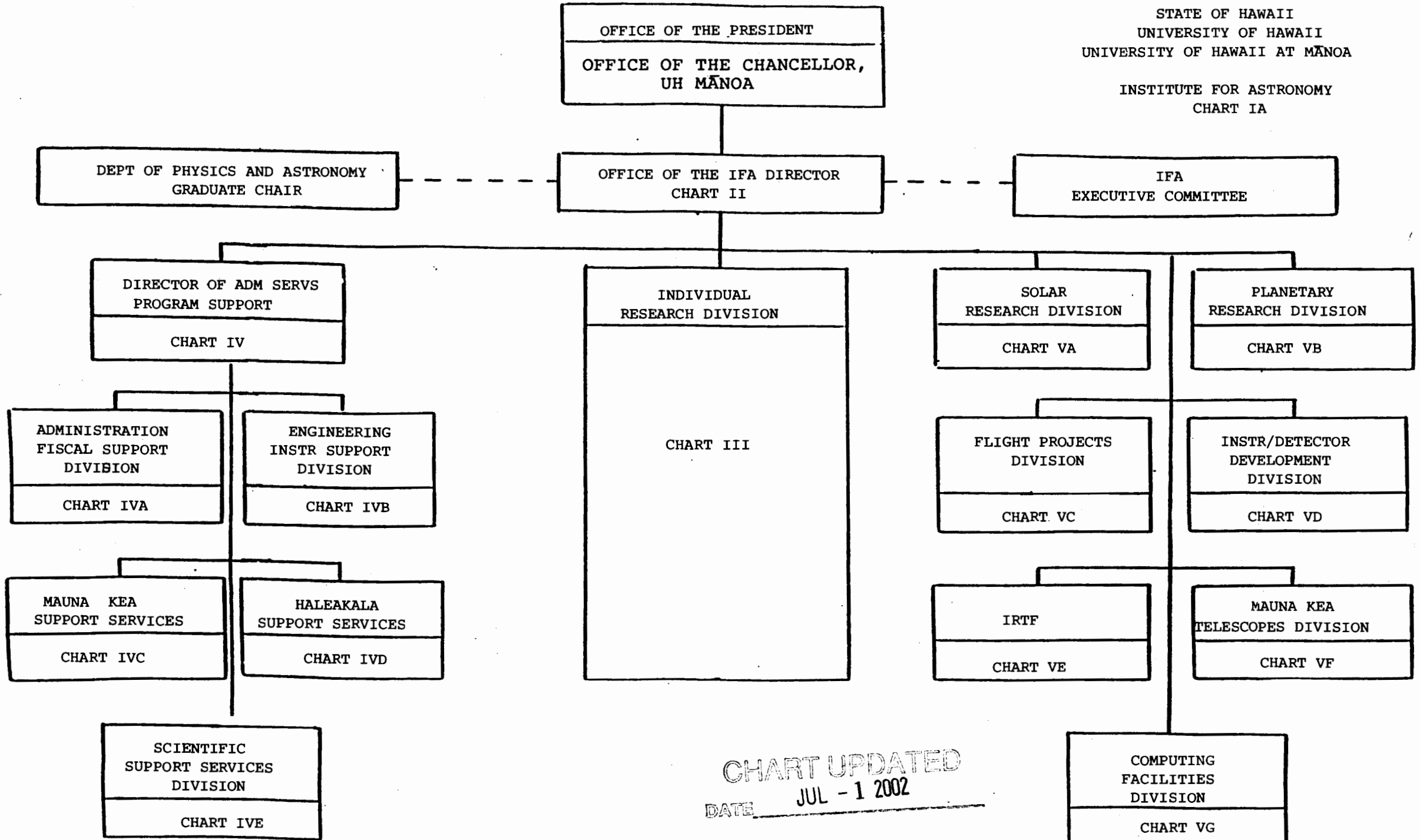


CHART UPDATED
JUL - 1 2002
DATE _____

STATE OF HAWAII
UNIVERSITY OF HAWAII
UNIVERSITY OF HAWAII AT MĀNOA

INSTITUTE FOR ASTRONOMY
CHART II

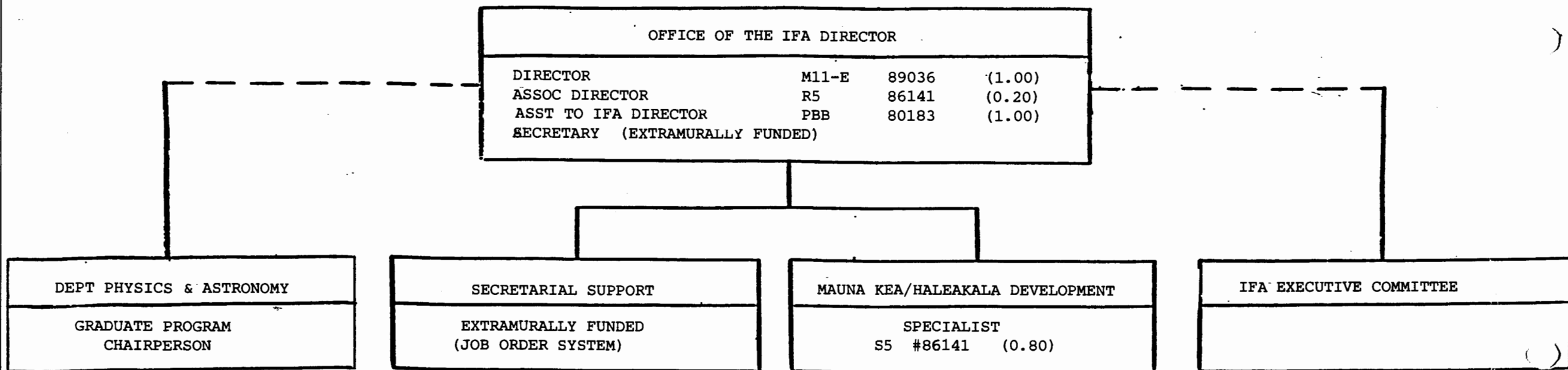


CHART UPDATED
DATE JUL - 1 2002

General Funds 3.00

STATE OF HAWAII
UNIVERSITY OF HAWAII
UNIVERSITY OF HAWAII AT MĀNOA

INSTITUTE FOR ASTRONOMY
CHART III

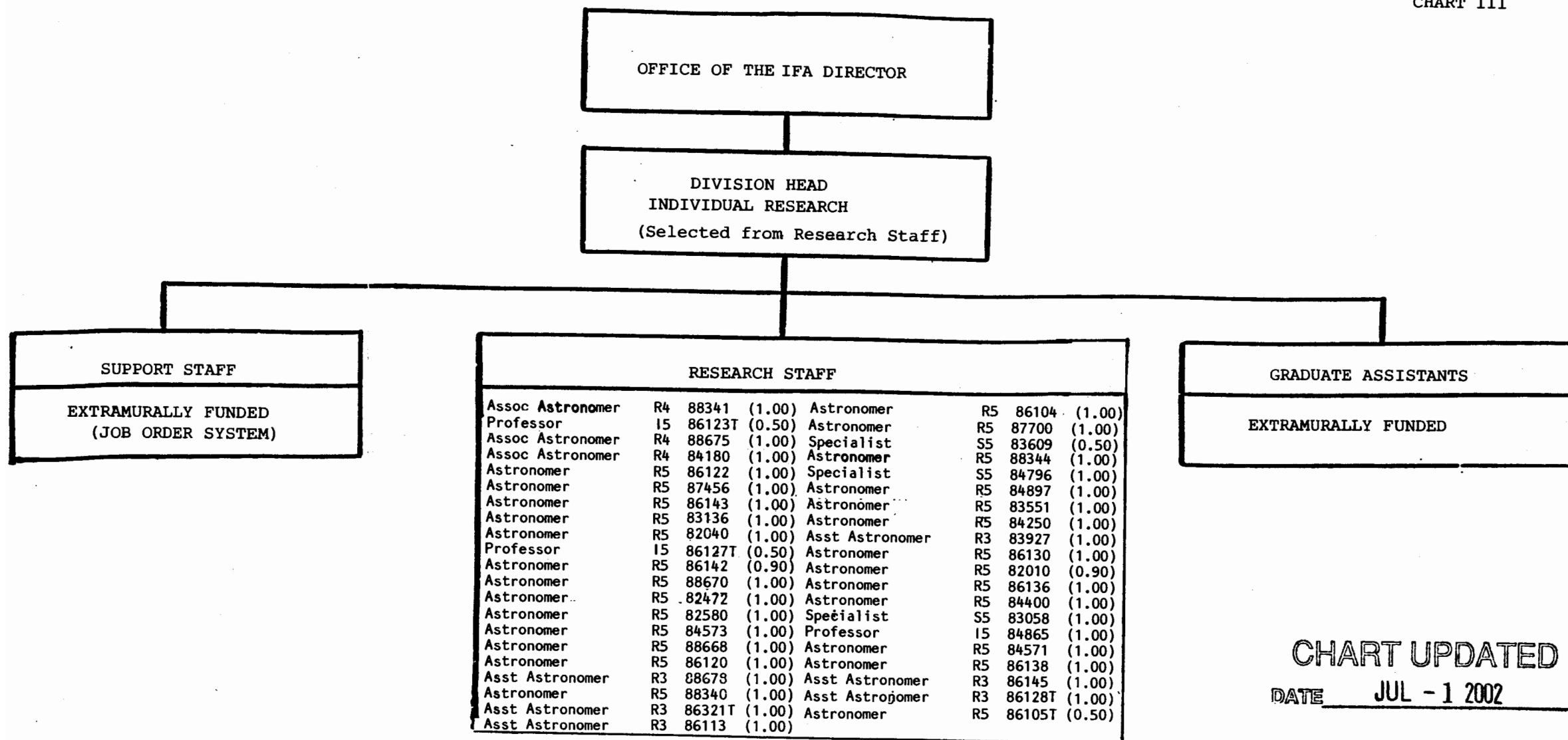


CHART UPDATED
DATE JUL - 1 2002

General Funds 38.80

STATE OF HAWAII
UNIVERSITY OF HAWAII
UNIVERSITY OF HAWAII AT MĀNOA

INSTITUTE FOR ASTRONOMY
CHART IV

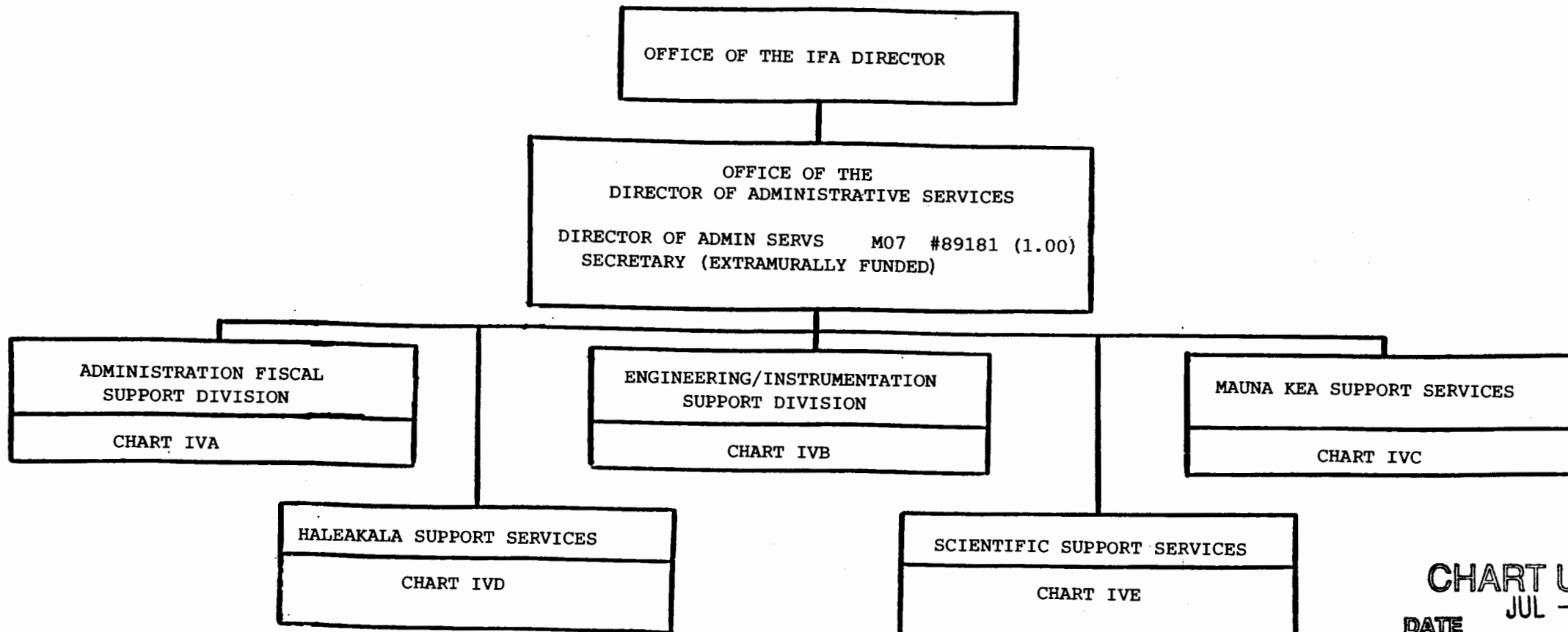
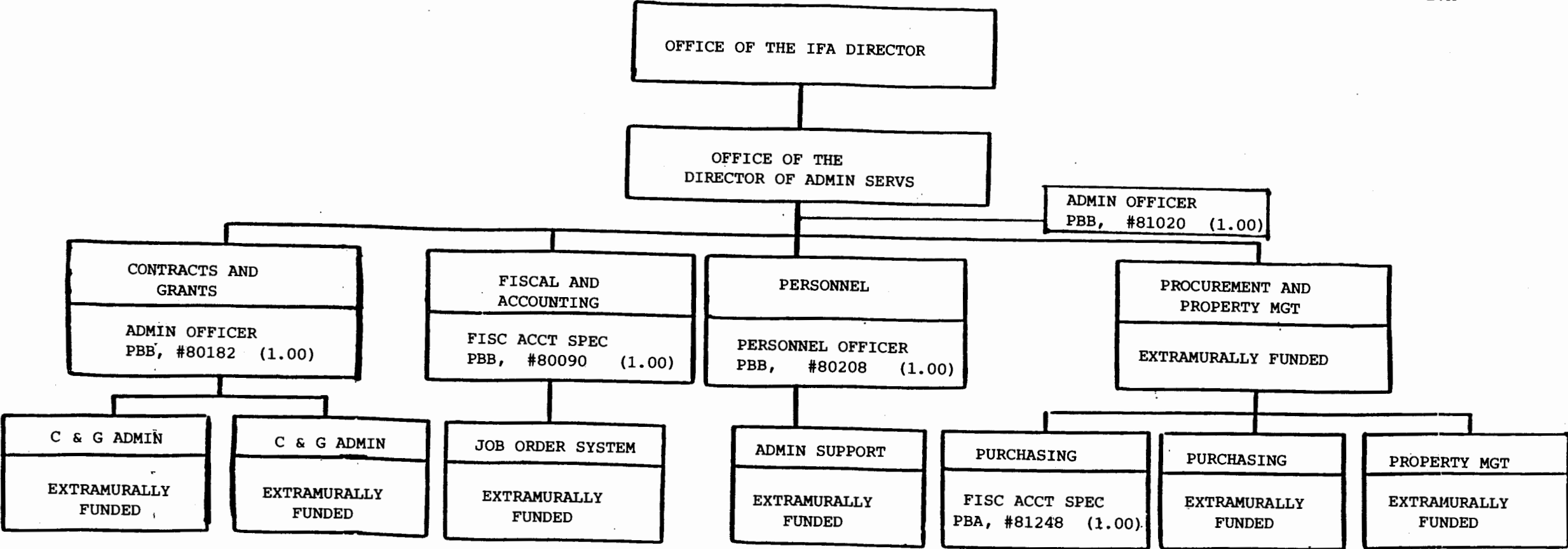


CHART UPDATED
JUL - 1 2002
DATE _____

General Funds 1.00

STATE OF HAWAII
UNIVERSITY OF HAWAII
UNIVERSITY OF HAWAII AT MĀNOA

INSTITUTE FOR ASTRONOMY
CHART IVA



General Funds 5.00

CHART UPDATED
DATE JUL - 1 2002

STATE OF HAWAII
UNIVERSITY OF HAWAII
UNIVERSITY OF HAWAII AT MĀNOA

INSTITUTE FOR ASTRONOMY
CHART IVB

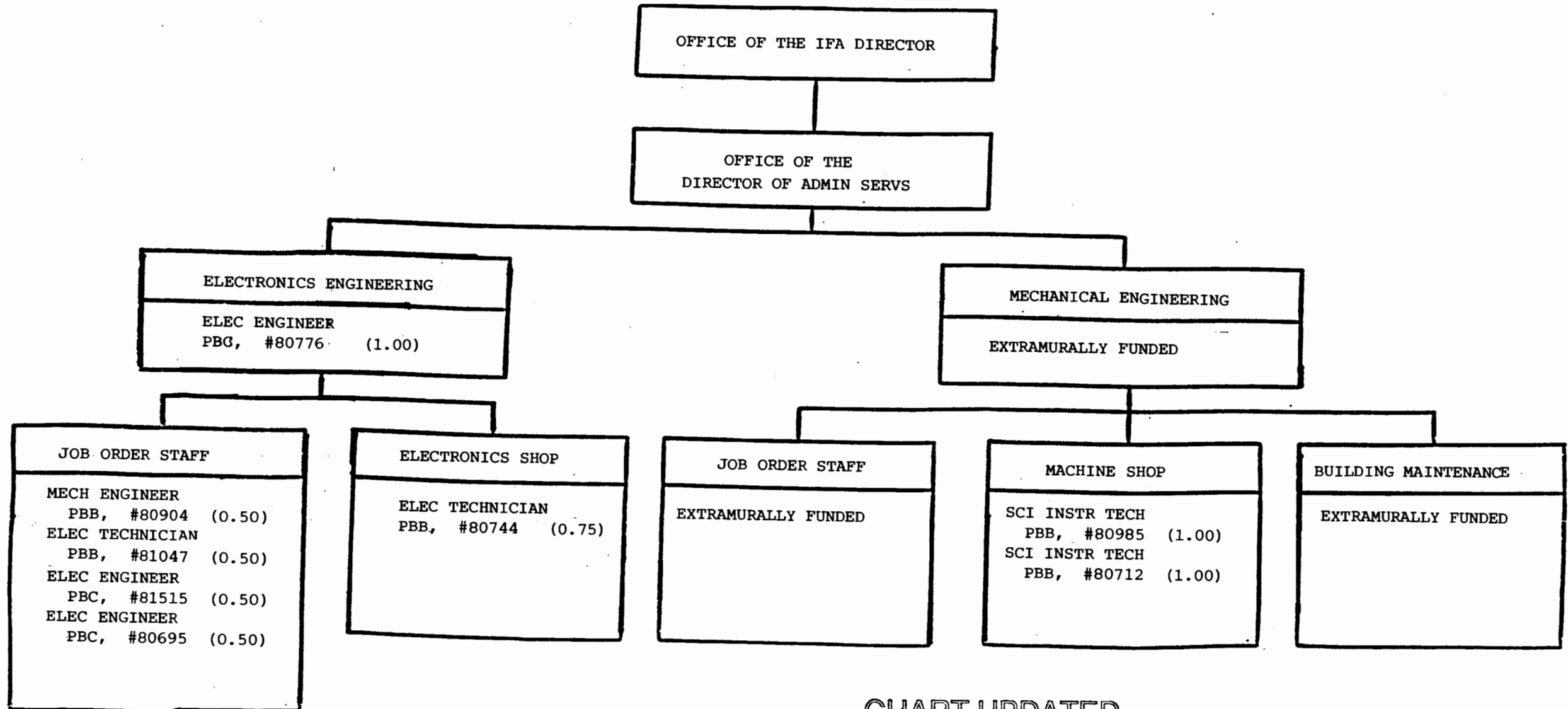


CHART UPDATED
DATE JUL - 1 2002

General Funds 5.75

MAUNA KEA SUPPORT SERVICES

STATE OF HAWAII
UNIVERSITY OF HAWAII
UNIVERSITY OF HAWAII AT MĀNOA

INSTITUTE FOR ASTRONOMY
CHART IVC

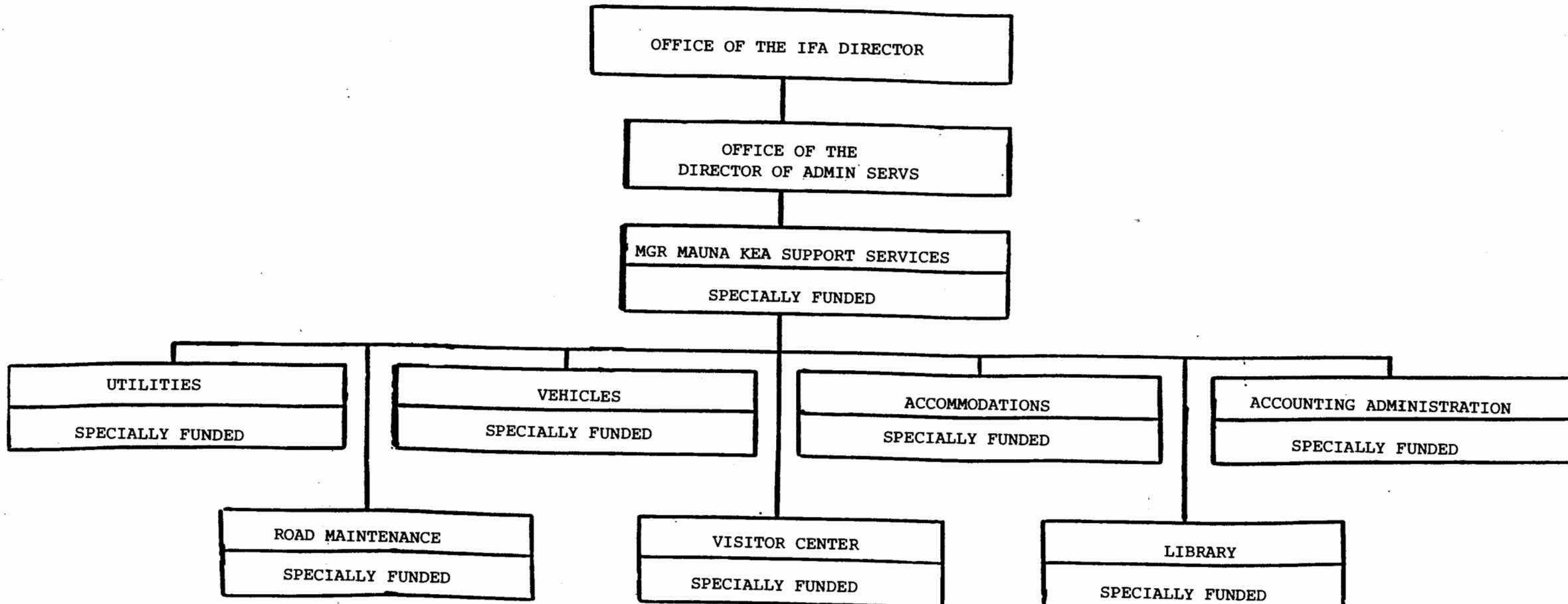
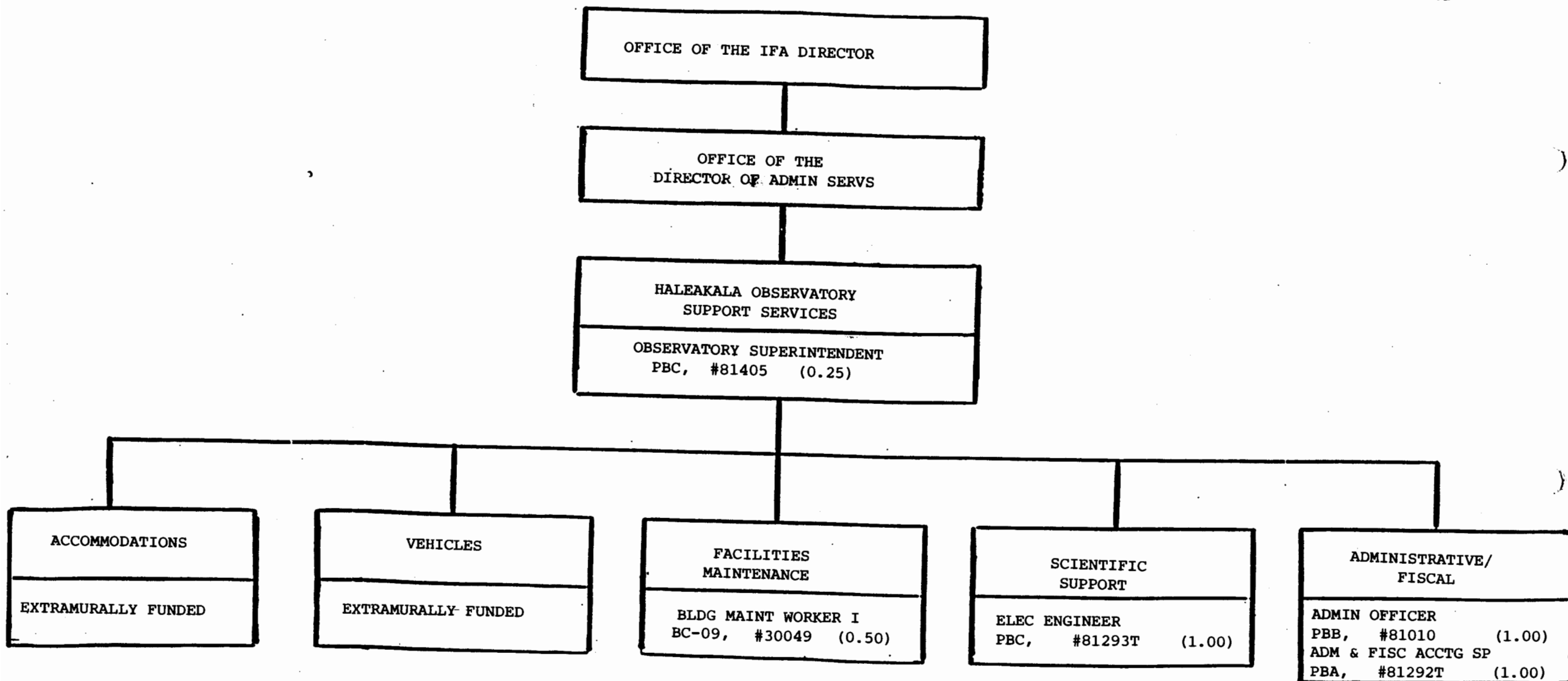


CHART UPDATED

DATE JUL - 1 2002

STATE OF HAWAII
UNIVERSITY OF HAWAII
UNIVERSITY OF HAWAII AT MĀNOA

INSTITUTE FOR ASTRONOMY
CHART IVD



*HALEAKALA HIGH ALT SITE SUPT, #81821 established on 06/21/91, however, it was never reflected on organizational chart. (1.00)

CHART UPDATED

DATE

JUL - 1 2002

General Funds 4.75

STATE OF HAWAII
UNIVERSITY OF HAWAII
UNIVERSITY OF HAWAII AT MĀNOA

INSTITUTE FOR ASTRONOMY
CHART IVE

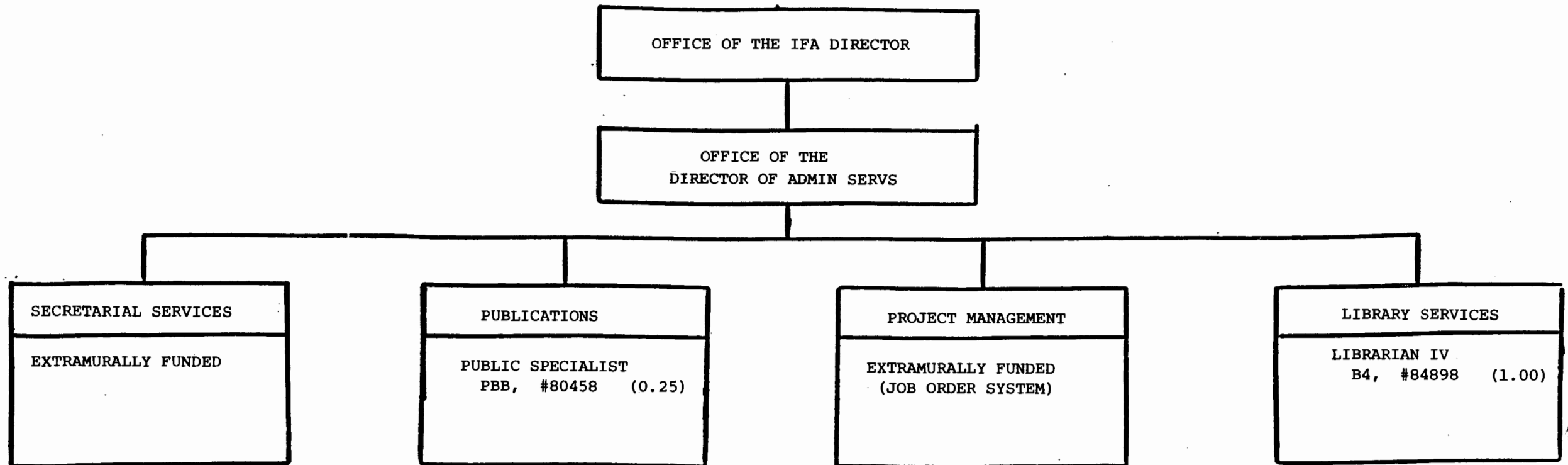


CHART UPDATED

DATE JUL - 1 2002

General Funds 1.25

STATE OF HAWAII
UNIVERSITY OF HAWAII
UNIVERSITY OF HAWAII AT MĀNOA

INSTITUTE FOR ASTRONOMY
CHART VA

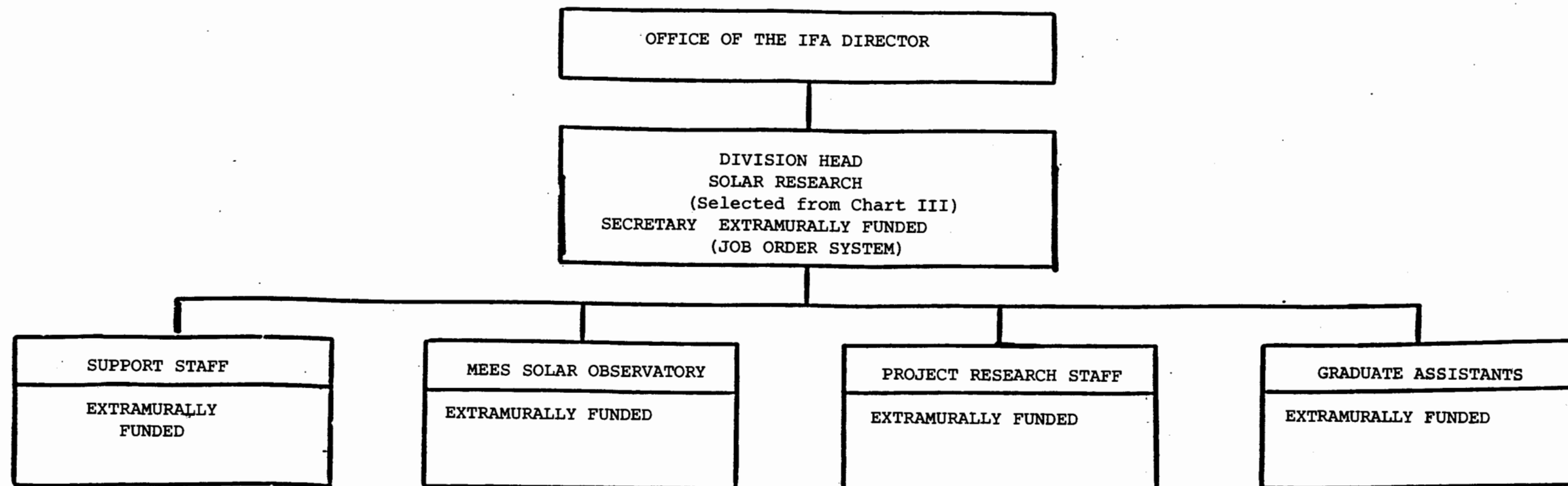


CHART UPDATED
DATE JUL - 1 2002

STATE OF HAWAII
UNIVERSITY OF HAWAII
UNIVERSITY OF HAWAII AT MĀNOA
INSTITUTE FOR ASTRONOMY
CHART VB

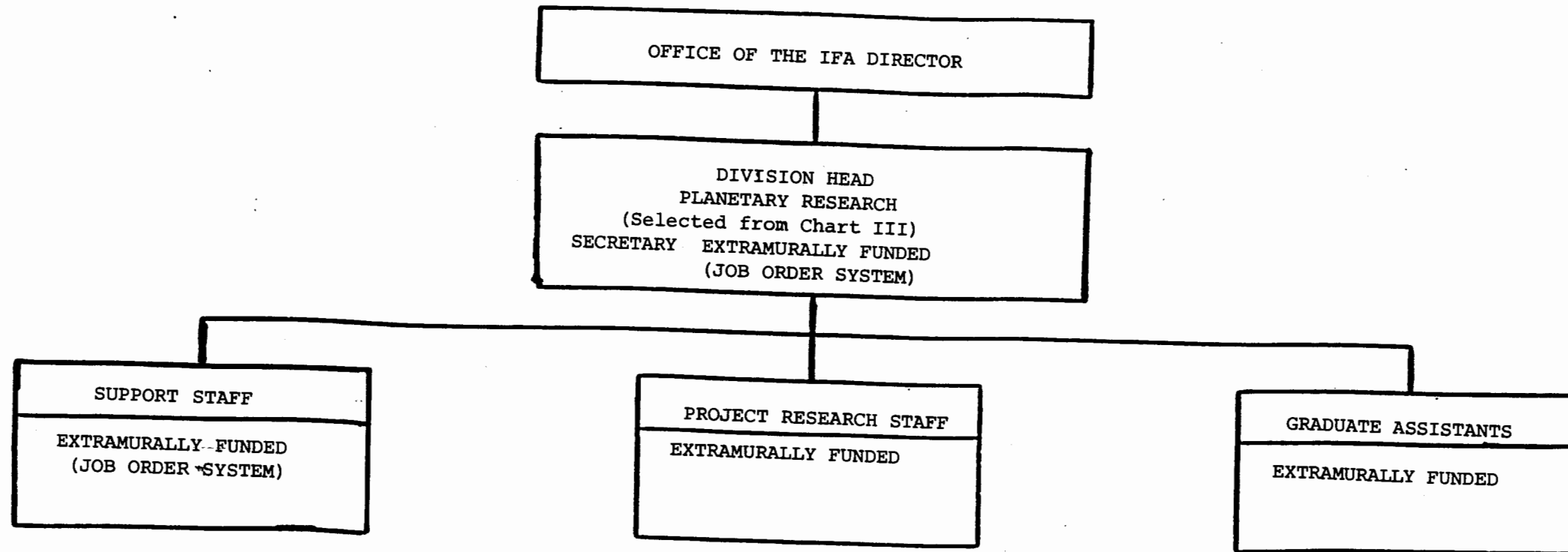


CHART UPDATED
DATE JUL - 1 2002

STATE OF HAWAII
UNIVERSITY OF HAWAII
UNIVERSITY OF HAWAII AT MĀNOA

INSTITUTE FOR ASTRONOMY
CHART VC

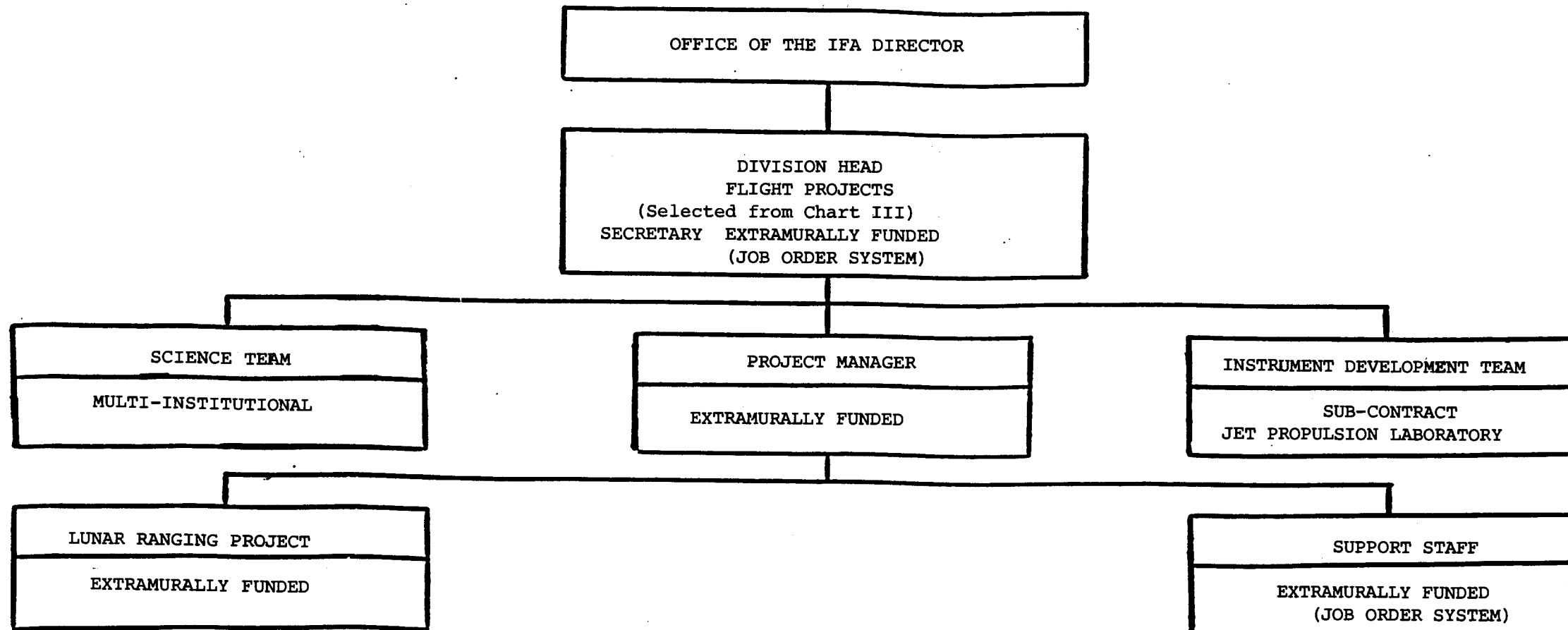


CHART UPDATED
DATE JUL - 1 2002

STATE OF HAWAII
UNIVERSITY OF HAWAII
UNIVERSITY OF HAWAII AT MĀNOA

INSTITUTE FOR ASTRONOMY
CHART VD

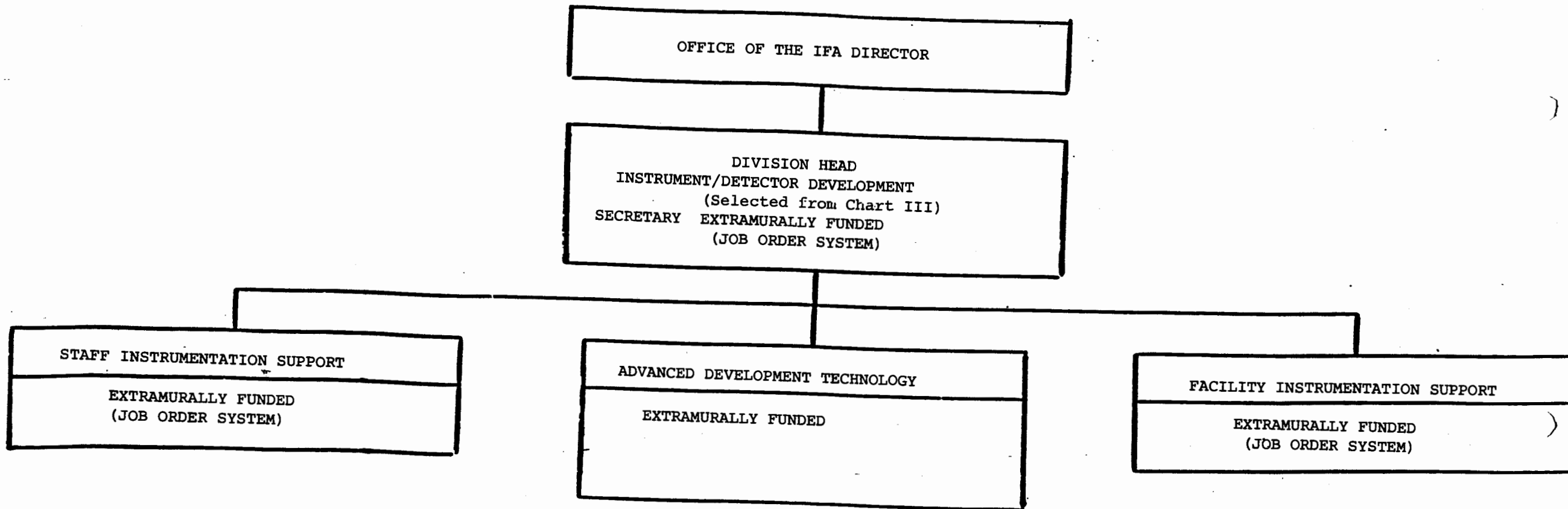


CHART UPDATED
DATE JUL - 1 2002

STATE OF HAWAII
UNIVERSITY OF HAWAII
UNIVERSITY OF HAWAII AT MĀNOA

INSTITUTE FOR ASTRONOMY
CHART VE

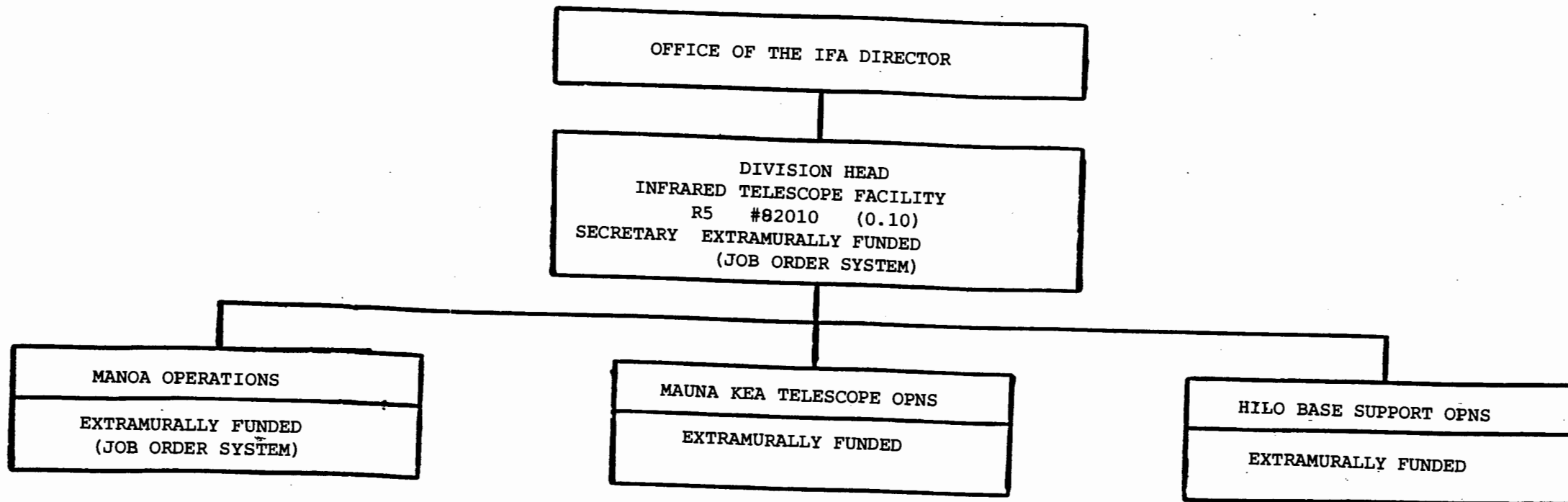


CHART UPDATED

DATE JUL - 1 2002

General Funds 0.10

STATE OF HAWAII
UNIVERSITY OF HAWAII
UNIVERSITY OF HAWAII AT MĀNOA

INSTITUTE FOR ASTRONOMY
CHART VF

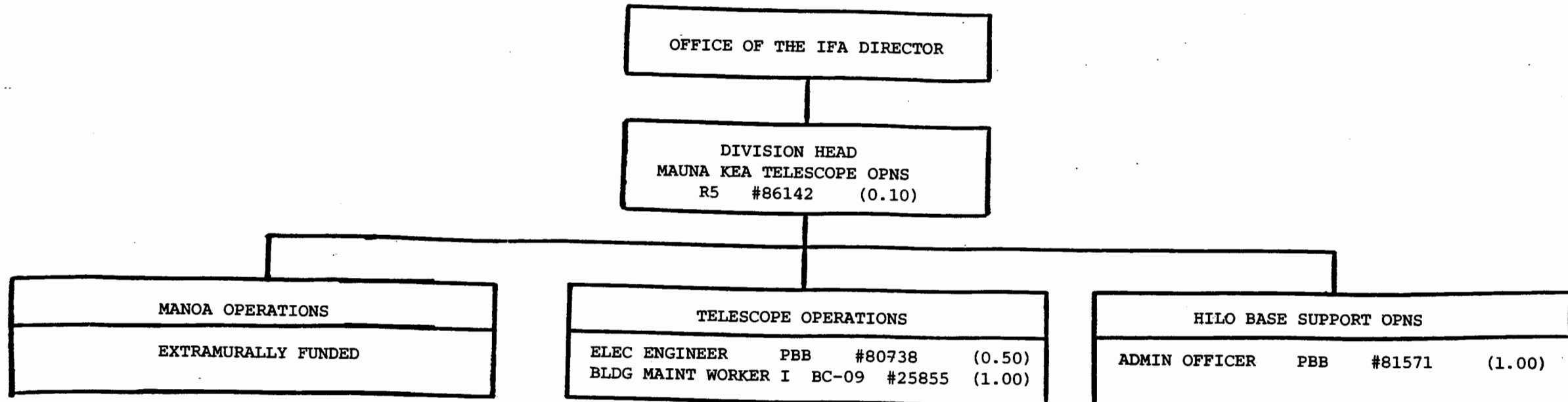


CHART UPDATED

DATE JUL - 1 2002

General Funds 2.60

STATE OF HAWAII
UNIVERSITY OF HAWAII
UNIVERSITY OF HAWAII AT MĀNOA

INSTITUTE FOR ASTRONOMY
CHART VG

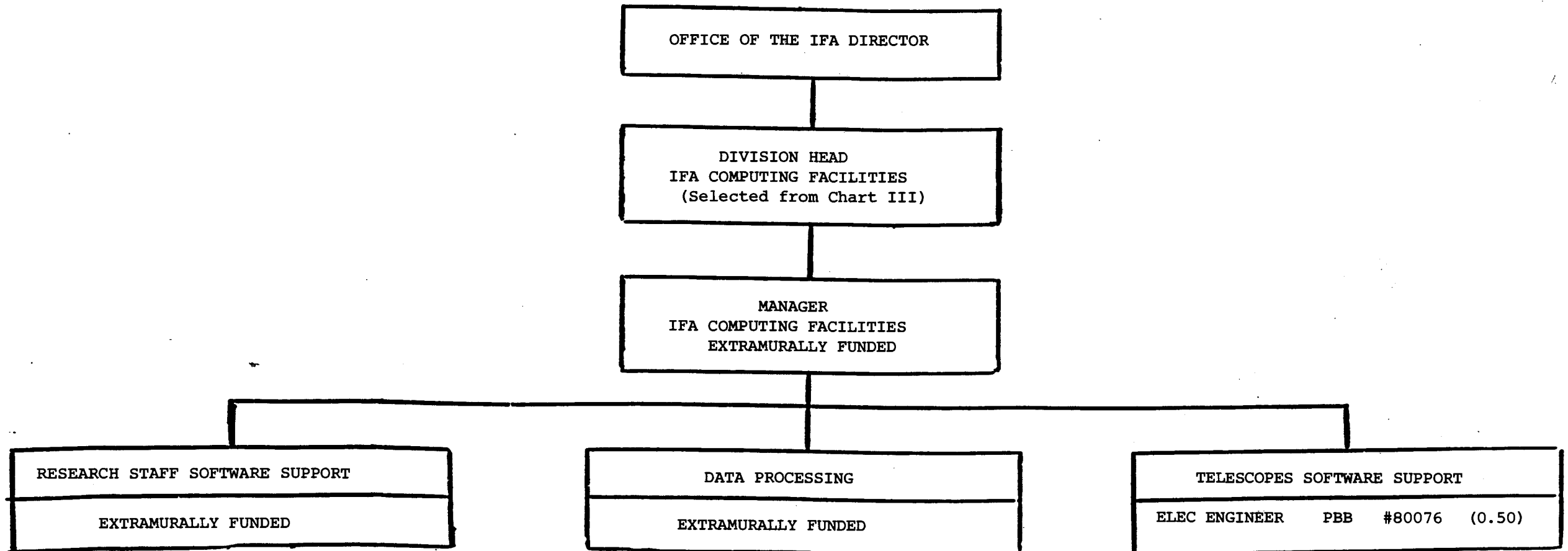


CHART UPDATED
JUL - 1 2002
DATE _____

General Funds 0.50