

CHART UPDATED
DATE JUL - 1 2002

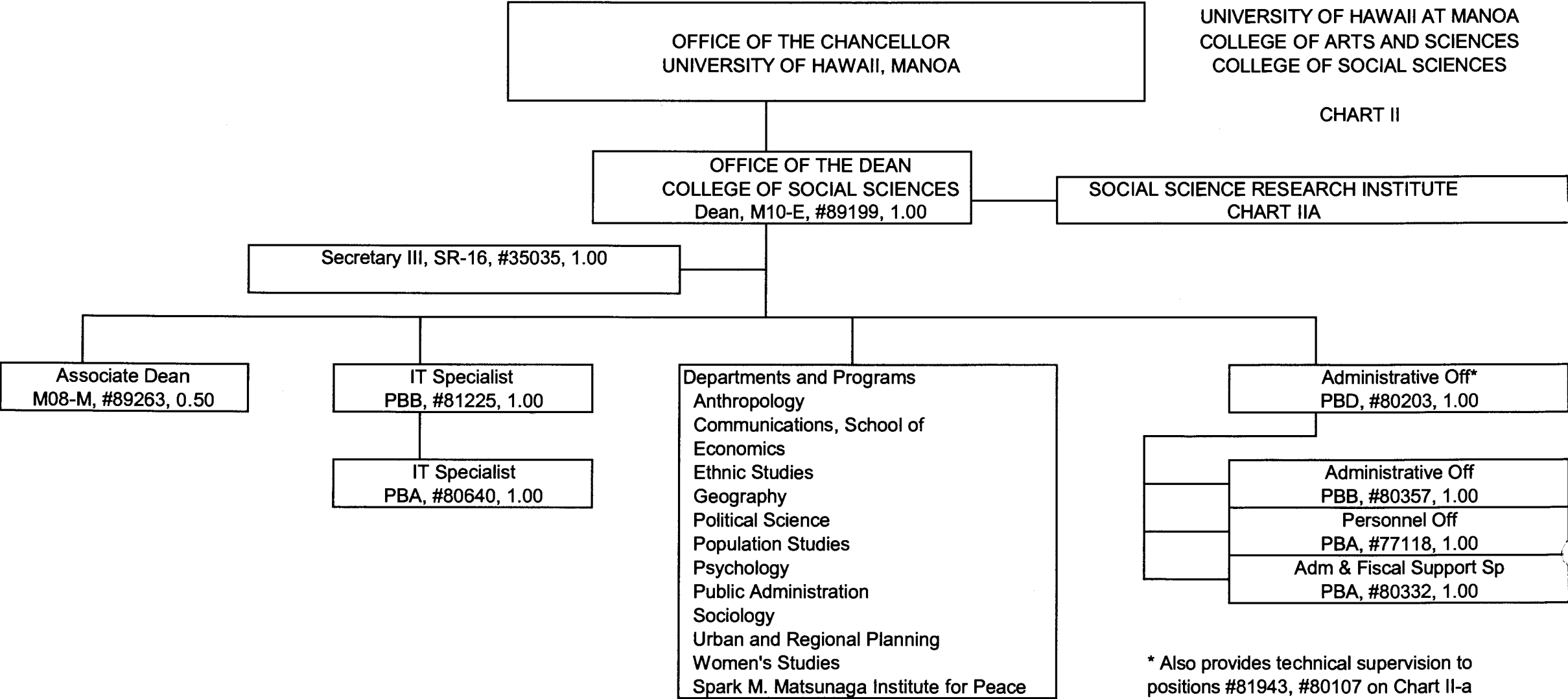
Approved:

Richard Dubanoski
Richard Dubanoski, Dean
College of Social Sciences

JUL 22 2002

STATE OF HAWAII
UNIVERSITY OF HAWAII
UNIVERSITY OF HAWAII AT MANOA
COLLEGE OF ARTS AND SCIENCES
COLLEGE OF SOCIAL SCIENCES

CHART II



* Also provides technical supervision to
positions #81943, #80107 on Chart II-a

CHART UPDATED
DATE JUL - 1 2002

Approved:

Richard Dubanoski

Richard Dubanoski, Dean
College of Social Sciences

JUL 31 2002

General Funds

8.50

STATE OF HAWAII
UNIVERSITY OF HAWAII
UNIVERSITY OF HAWAII, MANOA
COLLEGE OF SOCIAL SCIENCES
SOCIAL SCIENCE RESEARCH INSTITUTE

CHART II-a

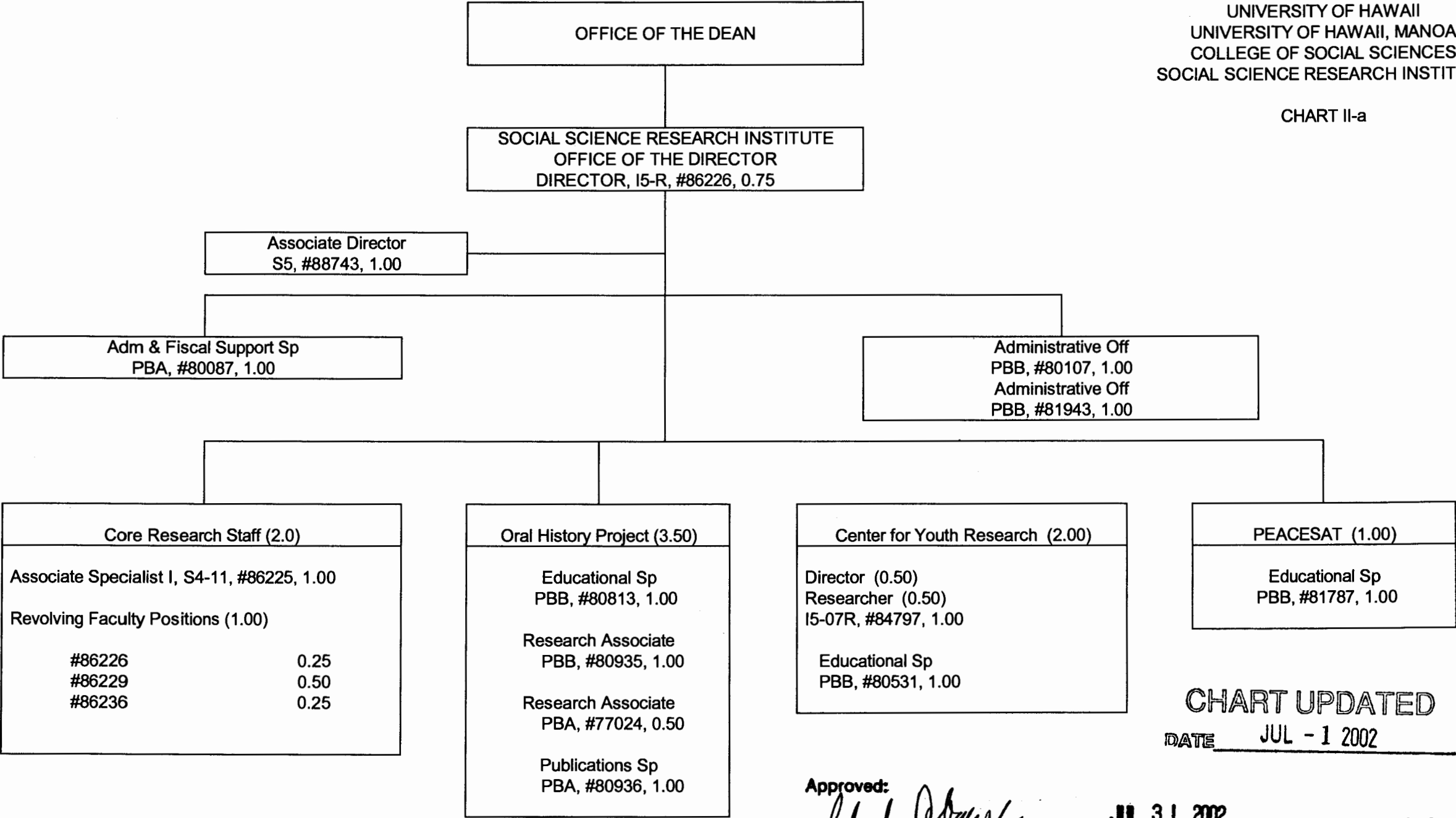



CHART UPDATED
DATE JUL - 1 2002

Approved: 
Richard Dubanoski, Dean
College of Social Sciences

OFFICE OF THE DEAN

STATE OF HAWAII
UNIVERSITY OF HAWAII
UNIVERSITY OF HAWAII AT MANOA
COLLEGES OF ARTS AND SCIENCES
COLLEGE OF SOCIAL SCIENCES
DEPARTMENT OF ANTHROPOLOGY

POSITION ORGANIZATION CHART


CHART III-a

DEPARTMENT OF ANTHROPOLOGY					
Chair (appointed from faculty positions)					
Secretary II, SR-14, #13482					1.00
Student Services Sp, PBB, #80639					1.00
Educational Sp, PBB, #81746					1.00
Faculty Positions:					17.00
<u>Full time:</u>	#82188,	82195,	82534,	82638,	82779,
	82797,	83004,	83358,	83405,	83574,
	83720,	83756,	83924,	84206,	84399,
	85082				
<u>Part time:</u>	#84921 (.50), #88154 (.50)				
Graduate Assistants:					3.00
	#83831,	83275,	88064,	88367	
	88529,	88591			

					23.00
Approved:					

CHART UPDATED
DATE JUL - 1 2002

Approved:


Richard Dubanoski, Dean
College of Social Sciences

JUL 22 2002

General Funds 23.00

OFFICE OF THE DEAN

STATE OF HAWAII
UNIVERSITY OF HAWAII
UNIVERSITY OF HAWAII AT MANOA
COLLEGES OF ARTS AND SCIENCES
COLLEGE OF SOCIAL SCIENCES
DEPARTMENT OF COMMUNICATIONS

POSITION ORGANIZATION CHART

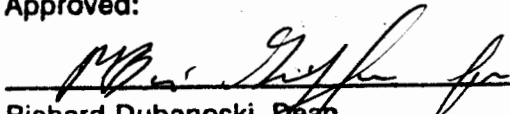
CHART III-b

SCHOOL OF COMMUNICATIONS					
Chair (appointed from faculty positions)					
Secretary II, SR-14, #13807					1.00
Clerk-Typist II, SR-08, #48445					1.00
Educational Sp, PBB, #83164					1.00
Faculty Positions:					17.00
<u>Full time:</u>	#82279,	82280,	82500,	82602,	82611,
	82871,	82905,	82946,	82982,	83302,
	84115,	84217,	84478,	84505,	84792,
	88169,	88619			
Graduate Assistants:					3.50
	#85507,	88210,	88506,	88534,	88581
	88607,	88681			
					----- 23.50

CHART UPDATED

DATE JUL - 1 2002

Approved:


Richard Dubanoski, Dean
College of Social Sciences

General Funds 23.50

JUL 22 2002

OFFICE OF THE DEAN

STATE OF HAWAII
UNIVERSITY OF HAWAII
UNIVERSITY OF HAWAII AT MANOA
COLLEGES OF ARTS AND SCIENCES
COLLEGE OF SOCIAL SCIENCES
DEPARTMENT OF ECONOMICS

POSITION ORGANIZATION CHART

CHART III-c

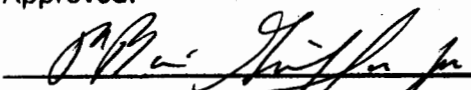
DEPARTMENT OF ECONOMICS					
Chair (appointed from faculty positions)					
Secretary II, SR-14, #14362					1.00
Clerk-Stenographer III, SR-11, #14360					1.00
Faculty Positions:					17.00
<u>Full time:</u>	#82192,	82286,	82679,	82777,	82838,
	83023,	83411,	83484,	83611,	83748,
	83943,	84047,	84054,	84643,	84815,
	85027				
<u>Part time:</u>	#83650 (.50), 84810 (.50)				
Graduate Assistants:					4.50
	#88061,	88175,	88193,	88233,	88248
	88262,	88420,	88517,	88631	
					----- 23.50

CHART UPDATED

DATE JUL - 1 2002

Approved:

General Funds 23.50

 JUL 22 2002
Richard Dubanoski, Dean
College of Social Sciences

OFFICE OF THE DEAN

STATE OF HAWAII
UNIVERSITY OF HAWAII
UNIVERSITY OF HAWAII AT MANOA
COLLEGES OF ARTS AND SCIENCES
COLLEGE OF SOCIAL SCIENCES
DEPARTMENT OF ETHNIC STUDIES

POSITION ORGANIZATION CHART

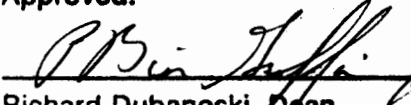
CHART III-d

DEPARTMENT OF ETHNIC STUDIES					
Chair (appointed from faculty positions)					
Secretary II, SR-14, #24006					1.00
Faculty Positions:					
Full time:	#83195,	84790,	84801,	84803, 84805,	7.50
	84813,	85586			
Part time:	#84807 (.50)				
					----- 8.50

CHART UPDATED

DATE JUL - 1 2002

Approved:


Richard Dubanoski, Dean
College of Social Sciences

JUL 22 2002 General Funds 8.50

OFFICE OF THE DEAN


STATE OF HAWAII
UNIVERSITY OF HAWAII
UNIVERSITY OF HAWAII AT MANOA
COLLEGES OF ARTS AND SCIENCES
COLLEGE OF SOCIAL SCIENCES
DEPARTMENT OF GEOGRAPHY

POSITION ORGANIZATION CHART

CHART III-e

DEPARTMENT OF GEOGRAPHY					
Chair (appointed from faculty positions)					
Secretary II, SR-14, #14358					1.00
Clerk-Stenographer II, SR-09, #18580					1.00
Educational Sp, PBB, #80641					1.00
Faculty Positions:					15.50
<u>Full time:</u> #82328, 82332, 82680, 82681, 82708,					
83935, 84209, 84254, 84518, 84565,					
84791, 84841, 84868 84917, 85298					
<u>Part time:</u> #82338 (.50)					
Graduate Assistants:					6.00
#88065, 88103, 88110, 88140, 88189					
88217, 88232, 88391, 88416, 88446					
84864, 88620					
					24.50

CHART UPDATED
DATE JUL - 1 2002

Approved:  JUL 22 2002 General Funds 24.50
Richard Dubanoski, Dean
College of Social Sciences

OFFICE OF THE DEAN

STATE OF HAWAII
UNIVERSITY OF HAWAII
UNIVERSITY OF HAWAII AT MANOA
COLLEGES OF ARTS AND SCIENCES
COLLEGE OF SOCIAL SCIENCES
DEPARTMENT OF POLITICAL SCIENCE

POSITION ORGANIZATION CHART

CHART III-f

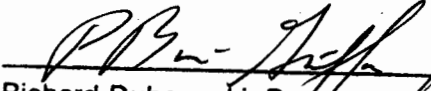
DEPARTMENT OF POLITICAL SCIENCE					
Chair (appointed from faculty positions)					
Secretary II, SR-14, #11112					1.00
Clerk-Stenographer II, SR-09, #14363					1.00
Clerk-Stenographer II, SR-09, #21775					1.00
Faculty Positions:					22.50
<u>Full time:</u> #82145, 82278, 82317, 82913, 83085,					
83194, 83311, 83370, 83621, 83753,					
83778, 83858, 84023, 84042, 84059,					
84109, 84130, 84234, 84556, 84800,					
84812					
<u>Part time:</u> #82823 (.50), 83277 (.50), 88549 (.50)					
Graduate Assistants:					3.50
#88076, 88090, 88238, 88336, 88407					
88676, 84880					

					29.00

CHART UPDATED

DATE JUL - 1 2002

Approved:


Richard Dubanoski, Dean
College of Social Sciences

General Funds 29.00

JUL 22 2002

OFFICE OF THE DEAN

STATE OF HAWAII
UNIVERSITY OF HAWAII
UNIVERSITY OF HAWAII AT MANOA
COLLEGES OF ARTS AND SCIENCES
COLLEGE OF SOCIAL SCIENCES
POPULATION STUDIES PROGRAM

POSITION ORGANIZATION CHART

CHART III-g

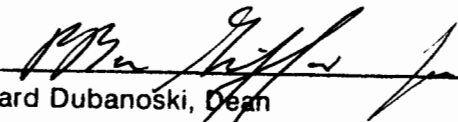
POPULATION STUDIES PROGRAM		
Director (appointed from faculty positions)		0.00
Faculty Position		0.50
<u>Part Time:</u> #84816 (.50)		

		0.50

CHART UPDATED
DATE JUL - 1 2002

Approved:

General Funds 0.50



Richard Dubanoski, Dean
College of Social Sciences

JUL 22 2002

OFFICE OF THE DEAN

STATE OF HAWAII
UNIVERSITY OF HAWAII
UNIVERSITY OF HAWAII AT MANOA
COLLEGES OF ARTS AND SCIENCES
COLLEGE OF SOCIAL SCIENCES
DEPARTMENT OF PSYCHOLOGY

POSITION ORGANIZATION CHARTS

CHART III-h


DEPARTMENT OF PSYCHOLOGY					
Chair (appointed from faculty positions)					
Director, Clinical Studies (appointed from faculty positions)					
Secretary II, SR-14, #12856					1.00
Clerk-Stenographer III, SR-11, #19052					1.00
Educational Sp, PBB, #80638					1.00
Faculty Positions:					27.75
<u>Full time:</u>	#82114,	82198,	82294,	82398,	82412,
	82471,	82537,	82564,	82615,	82629,
	82916,	83016,	83092,	83110,	83458,
	83507,	83626,	84131,	84346,	84416,
	84491,	84497,	84827,	84866,	85075,
	85450,	88005			
<u>Part time:</u>	#84319 (0.75)				
Graduate Assistants:					4.00
	#85148,	88046,	88060,	88252,	88320
	88362,	88511,	88559		
					34.75

CHART UPDATED

DATE JUL - 1 2002

Approved:

General Funds 34.75

 JUL 22 2002
Richard Dubanoski, Dean
College of Social Sciences

OFFICE OF THE DEAN

STATE OF HAWAII
UNIVERSITY OF HAWAII
UNIVERSITY OF HAWAII AT MANOA
COLLEGES OF ARTS AND SCIENCES
COLLEGE OF SOCIAL SCIENCES
PUBLIC ADMINISTRATION PROGRAM

POSITION ORGANIZATION CHART

Chart III-i

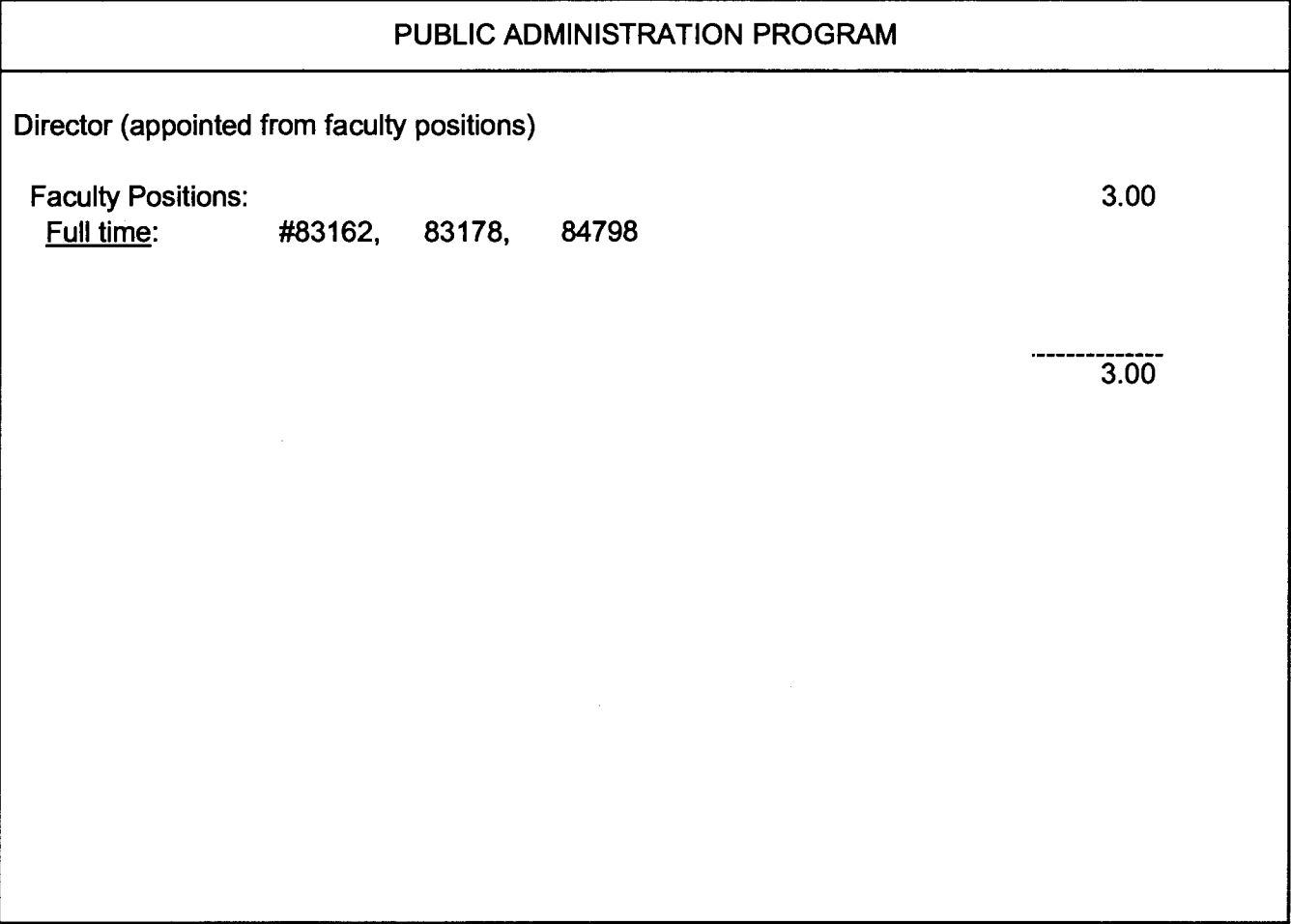
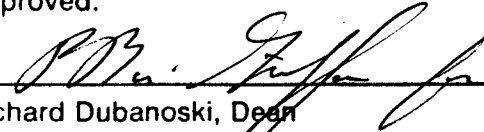


CHART UPDATED

DATE JUL - 1 2002

Approved:


Richard Dubanoski, Dean
College of Social Sciences

General Funds 3.00

JUL 22 2002

OFFICE OF THE DEAN

STATE OF HAWAII
UNIVERSITY OF HAWAII
UNIVERSITY OF HAWAII AT MANOA
COLLEGES OF ARTS AND SCIENCES
COLLEGE OF SOCIAL SCIENCES
DEPARTMENT OF SOCIOLOGY

POSITION ORGANIZATION CHART

CHART III-j

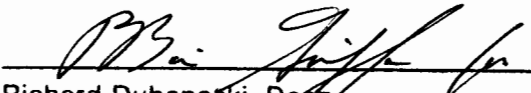
DEPARTMENT OF SOCIOLOGY					
Chair (appointed from faculty positions)					
Secretary II, SR-14, #13485					1.00
Clerk-Stenographer II, SR-09, #16953					1.00
Faculty Positions:					19.00
<u>Full time:</u> #82097, 82125, 82204, 82207, 82323,					
82605, 83050, 83713, 84076, 84121,					
84237, 84286, 84456, 84502, 84504,					
84575, 84616, 84642, 85806					
Graduate Assistants:					5.50
#88008, 88100, 88182, 88208, 88268					
88408, 88485, 88498, 88533, 88616					
88392					
					----- 26.50

CHART UPDATED

DATE JUL - 1 2002

Approved:

General Funds 26.50

 JUL 22 2002
Richard Dubanoski, Dean
College of Social Sciences

OFFICE OF THE DEAN

STATE OF HAWAII
UNIVERSITY OF HAWAII
UNIVERSITY OF HAWAII AT MANOA
COLLEGES OF ARTS AND SCIENCES
COLLEGE OF SOCIAL SCIENCES
DEPARTMENT OF URBAN AND REGIONAL PLANNING

POSITION ORGANIZATION CHART


CHART III-k

DEPARTMENT OF URBAN AND REGIONAL PLANNING				
Chair (appointed from faculty positions)				
Secretary II, SR-14, #15640				1.00
Faculty Positions:				7.50
Full time:	#82377,	82539,	83624,	84060, 84351,
	84522,	85736		
Part time:	#84811 (.50)			
				----- 8.50

CHART UPDATED

DATE JUL - 1 2002

Approved:


Richard Dubanoski, Dean
College of Social Sciences

General Funds 8.50

JUL 22 2002

OFFICE OF THE DEAN

STATE OF HAWAII
UNIVERSITY OF HAWAII
UNIVERSITY OF HAWAII AT MANOA
COLLEGES OF ARTS AND SCIENCES
COLLEGE OF SOCIAL SCIENCES
WOMEN'S STUDIES PROGRAM

POSITION ORGANIZATION CHART

CHART III-I

WOMEN'S STUDIES PROGRAM

Director (appointed from faculty positions)

Secretary II, SR-14, #31328 0.75

Faculty Positions: 6.00

Full time: #82870, 84200, 84804, 84817, 86071

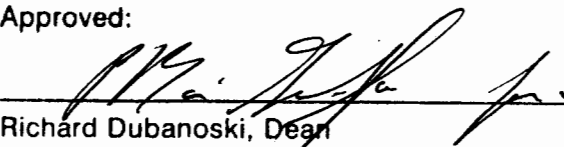
Part time: #84057 (.50), #85962 (.50)

6.75

CHART UPDATED

DATE JUL - 1 2002

Approved:


Richard Dubanoski, Dean
College of Social Sciences

General Funds 6.75

JUL 22 2002

OFFICE OF THE DEAN

STATE OF HAWAII
UNIVERSITY OF HAWAII
UNIVERSITY OF HAWAII AT MANOA
COLLEGES OF ARTS AND SCIENCES
COLLEGE OF SOCIAL SCIENCES
SPARK M. MATSUNAGA INSTITUTE FOR PEACE

POSITION ORGANIZATION CHART

CHART III-m

SPARK M. MATSUNAGA INSTITUTE FOR PEACE

Director (appointed from faculty positions)

Secretary I, SR-12, #42279 1.00

Educational Sp, PBB, #80358 1.00

Faculty Positions: 3.50

Full time: #88092, 88112, 88732

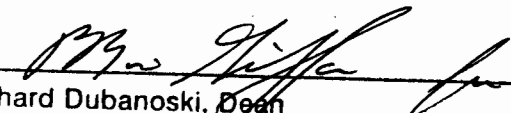
Part time: #88113 (.50)

5.50

CHART UPDATED

DATE JUL - 1 2002

Approved:


Richard Dubanoski, Dean
College of Social Sciences

General Funds 5.50

JUL 22 2002