

**OFFICE OF THE CHANCELLOR
UNIVERSITY OF HAWAI'I at MĀNOA**

State of Hawai'i
University of Hawai'i
University of Hawai'i at Mānoa

*** OFFICE OF THE VICE PRESIDENT FOR STUDENT AFFAIRS**
Chart IV-A

Office:
UHM Student Services

OFFICE OF ADMINISTRATIVE SERVICES
Chart IV-A

Chart: IV
[CURRENT]

**OFFICE OF THE DIRECTOR OF STUDENT
EQUITY, EXCELLENCE AND DIVERSITY**
Chart IV-A

Center for Adults
Returning to Education
Chart IV-O

Hawai'i Opportunity
Program in Education
Chart IV-P

Operation Kua'ana
Chart IV-Q

Women's Center
Chart IV-M

College Opportunities
Program
Chart IV-L

KOKUA Program
Chart IV-S

Office of Multicultural
Student Services
Chart IV-R

**OFFICE OF THE DEAN OF STUDENTS
AND STUDENT SERVICES (UHM)**
Chart IV-A

Co-curricular Activities,
Programs and Services
Chart IV-D

Counseling and
Student Development
Center
Chart IV-J

International
Student Services
Chart IV-H

Student Employment and
Cooperative Education
Chart IV-G

Student Housing
Services
Chart IV-E

Career Services
Chart IV-I

Children's Center
Chart IV-N

School and College
Services
Chart IV-F

University Health
Services
Chart IV-K

**OFFICE OF THE DIRECTOR OF UNIVERSITYWIDE
STUDENT AFFAIRS/ASSISTANT TO THE VP**
Chart IV-A

Admissions and
Records
Chart IV-B

Financial Aid Services
Chart IV-C

*Pos. No. 89103
VP For Student Affairs
Reassigned To
Systemwide Administration

Office:
UHM Student Services

Chart: IV-A
[CURRENT]

**OFFICE OF THE CHANCELLOR
UNIVERSITY OF HAWAI'I at MĀNOA**

OFFICE OF THE VICE PRESIDENT FOR STUDENT AFFAIRS

Vice President for Student Affairs, M13, #89103 *

ADMINISTRATIVE SUPPORT

Director of Student Enr Svcs, M6, #89309
Private Secretary II, SR22, #100054*
Associate Specialist, S4, #82637

OFFICE OF ADMINISTRATIVE SERVICES

Administrative Officer, PBC, #80146

FISCAL SERVICES

Account Clerk III, SR11, #21426

PERSONNEL SERVICES

Personnel Officer, PBB, #81879
Personnel Clerk V, SR13, #44556

**OFFICE OF THE DIRECTOR OF STUDENT
EQUITY, EXCELLENCE AND DIVERSITY**

Director of Minority Students, M6, #89298
Administrative Officer, PBB, #81088
Specialist, S5, #82594
Educational Specialist, PBB, #81063

**OFFICE OF THE DEAN OF STUDENTS
AND STUDENT SERVICES (UHM)**

Dean of Student Services (UHM), M9, #89133
Secretary III, SR16, #00745
Assistant Specialist, S3, #84173
Assistant Specialist, S3, #83035
Assistant Specialist, S3, #85485
Assistant Specialist, S3, #88099
Student Services Spec, PBB, #81374(R)

**OFFICE OF THE DIRECTOR OF UNIVERSITYWIDE
STUDENT AFFAIRS/ASSISTANT TO THE VP**

Supervision temporarily provided by VPSA, #89103
Secretary II, SR14, #44996
Educational Specialist, PBB, #81210
Student Services Specialist, PBC, #81298

*Reassigned to Systemwide Administration

General Funds 21.00
Revolving Funds 1.00

07/09/02

Office:

**UHM Student Services
Admissions and Records**

Chart: **IV-B**
[CURRENT]

**OFFICE OF THE DIRECTOR OF UNIVERSITYWIDE
STUDENT AFFAIRS/ASSISTANT TO THE VP**

ADMISSIONS AND RECORDS

Specialist, S5, #82701

ADMINISTRATIVE SUPPORT

Secretary II, SR 14, #14866
Student Services Specialist, PBC #81154 (.3)

ADMISSIONS AND RESIDENCY

Student Services Specialist, PBC, #81154 (.7)
Clerk Supervisor III, SR14, #00748
Clerk IV, SR10, #00772, #12550, #12842, #12843
#13495, #13496, #18009, #900016
#26538
Student Services Specialist, PBB, #80626
Student Services Specialist, PBB, #81414
Student Services Specialist, PBB, #80625
Clerk IV, SR10, #11496
Student Services Specialist, PBB, #80530
Student Services Specialist, PBB, #80096
Student Services Specialist, PBB, #81734

RECORDS AND REGISTRATION

Student Services Specialist, PBC, #81614
Student Services Specialist, PBB, #80658
Clerk Supervisor III, SR14, #17447
Clerk IV, SR10, #00750, #13959, #14863, #14864
#14865(R), #15502, #17450, #900015
#21430, #40006
Clerk III, SR8, #13494 (R), #26539(R)
Scheduler, SR20, #05837

INFORMATION AND COMPUTER SERVICES

Student Services Specialist, PBB, #81070
IT Specialist, PBB, #80017
Student Services Specialist, PBA, #81071
Clerk Supervisor II, SR12, #22322
Clerk IV, SR10, #40004, #40005, #15501
Clerk-Stenographer II, SR9, #22321
Clerk III, SR8, #40003
IT Specialist, PBB, #80018

CHART UPDATED

DATE JUL - 1 2002

General Funds
Revolving Funds

43.00
3.00

**OFFICE OF THE DIRECTOR OF UNIVERSITYWIDE
STUDENT AFFAIRS/ASSISTANT TO THE VP**

State of Hawai'i
University of Hawai'i
University of Hawai'i at Mānoa

Office:

**UHM Student Services
Financial Aid Services**

Chart: IV-C
[CURRENT]

FINANCIAL AID SERVICES

Director of Financial Aid, M4, #89184

ADMINISTRATIVE SUPPORT

Secretary II, SR14, #05737

CHART UPDATED
DATE JUL - 1 2002

PROGRAM SPECIALISTS

Student Services Specialist, PBB, #81913
Student Services Specialist, PBB, #81608
Student Services Specialist, PBB, #81607
Student Services Specialist, PBB, #81606
Student Services Specialist, PBB, #81609
Student Services Specialist, PBB, #81151
Student Services Specialist, PBB, #80922

DATA AND CLERICAL SUPPORT SECTION

Clerical Supervisor III, SR14, #17599
Clerk-Typist III, SR10, #16967
Clerk-Typist III, SR10, #15265
Clerk-Typist III, SR10, #17600
Clerk-Typist III, SR10, #10929
Clerk III, SR8, #44397

General Funds 15.00

07/09/02

**OFFICE OF THE DEAN OF STUDENTS AND STUDENT SERVICES
(UHM)**

State of Hawai'i
University of Hawai'i
University of Hawai'i at Mānoa

Office:
**UHM Student Services
Co-Curricular Activities,
Programs and Services**

Chart: IV-D
[CURRENT]

CO-CURRICULAR ACTIVITIES, PROGRAMS & SERVICES
Director of Bureau of Student Activities, M4, #89190

ADMINISTRATIVE AND FISCAL SUPPORT

Administrative Officer, PBB, #80163 (R)
Adm/Fiscal Support Specialist, PBA, #80649 (R)
Account Clerk IV, SR13, #25700 (R)
Account Clerk III, SR11, #45362 (R)

CLERICAL SUPPORT

Secretary II, SR14, #13587
Clerk-Typist III, SR10, #28134 (R)
Clerk-Typist II, SR08, #25699 (R)
Clerk II, SR06, #25698 (R)

INTRAMURAL SPORTS

Specialist, S5, #83512
Specialist, S5, #85083
Junior Specialist, S2, #83788
Clerk-Typist II, SR08, #26460

**STUDENT LEADERSHIP DEVELOPMENT
& CO-CURRICULAR INTERVENTIONS
PROGRAMS**

Associate Specialist, S4, #82864
Junior Specialist, S2, #82573
Assistant Specialist, S3, #82597
Student Services Specialist, PBB, #77071
Student Services Specialist, PBB, #81134
Student Services Specialist, PBB, #81510(R)
Student Services Specialist, PBB, #80025(R)
Publication Specialist, PBB, #81186(R)
Adm/Fiscal Support Specialist, PBA, #81137(R)
Junior Specialist, S2, #88334(R)
Publication Spec, PBA, #81486(R)
Publication Spec, PBA, #81488(R)
Publication Spec, PBA, #81506(R)

**OPERATIONAL PROGRAMS,
FACILITIES AND SERVICES**

Junior Specialist, S3, #88328(R)
Student Services Specialist, PBB, #80660(R)
Building Maintenance Worker I, BC09, #28597(R)
Janitor II, BC02, #25329(R), #25392(R),
#44089(R), #46560(R)
Bldg & Grnds Util Worker, #BC05, #45379(R),
#44085(R), #44109(R)
Student Services Specialist, PBB, #80631(R)
Student Services Specialist, PBA, #80942(R)
Assistant Specialist, S2, #88765(R)

CHART UPDATED
DATE JUL - 1 2002

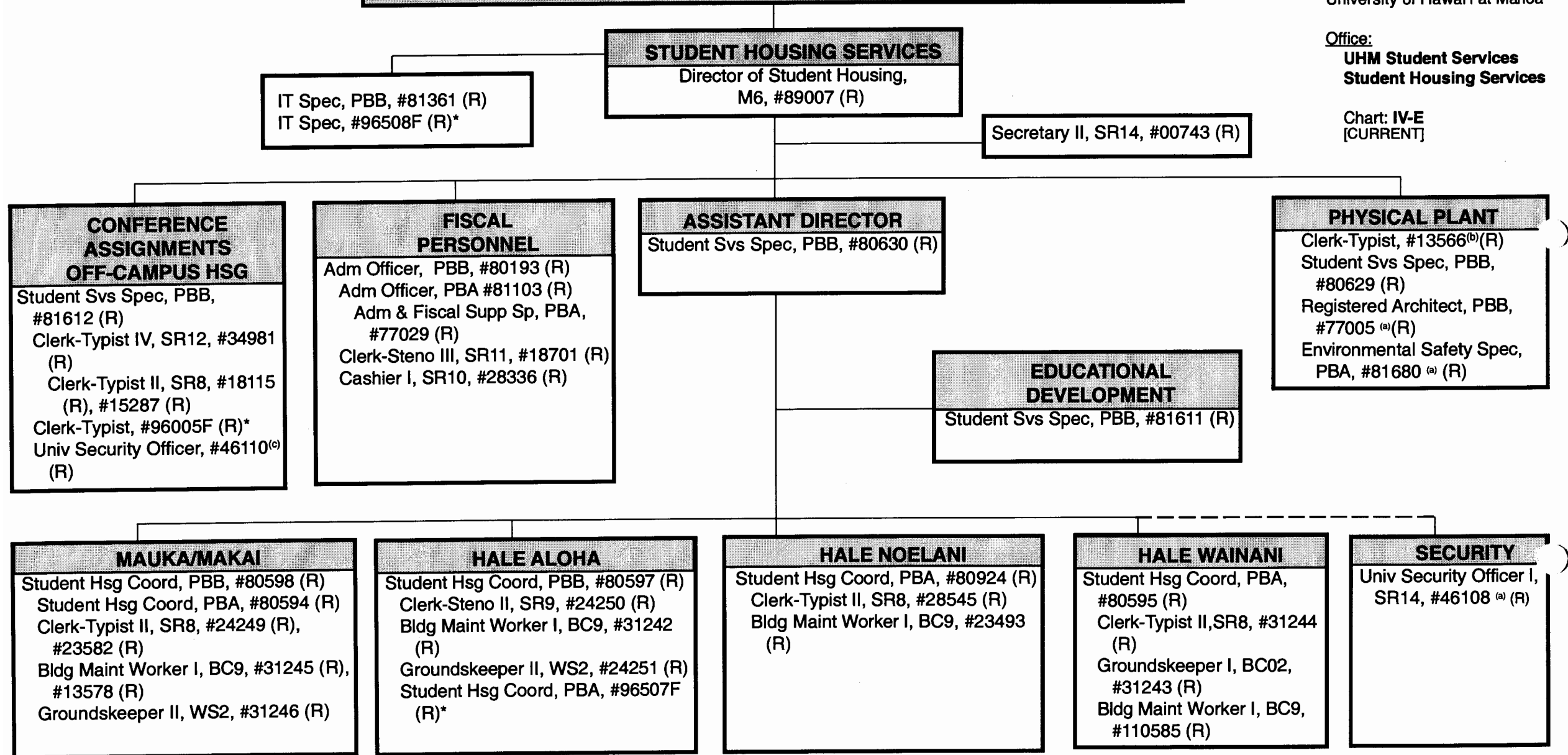
General Funds 11.00
Revolving Funds 28.00

OFFICE OF THE DEAN OF STUDENTS AND STUDENT SERVICES (UHM)

State of Hawai'i
University of Hawai'i
University of Hawai'i at Mānoa

Office:
**UHM Student Services
Student Housing Services**

Chart: IV-E
[CURRENT]



(a) Student Housing Services position assigned to and supervised by Campus Operations
(b) Formerly classified as Clerk-Typist; position to be redescribed
(c) Formerly classified as Univ Security Officer; position to be redescribed
*Pending Establishment

CHART UPDATED

DATE JUL - 1 2002

Revolving Funds

41.00

07/09/02

Office:
UHM Student Services
School and College Services

Chart: IV-F
[CURRENT]

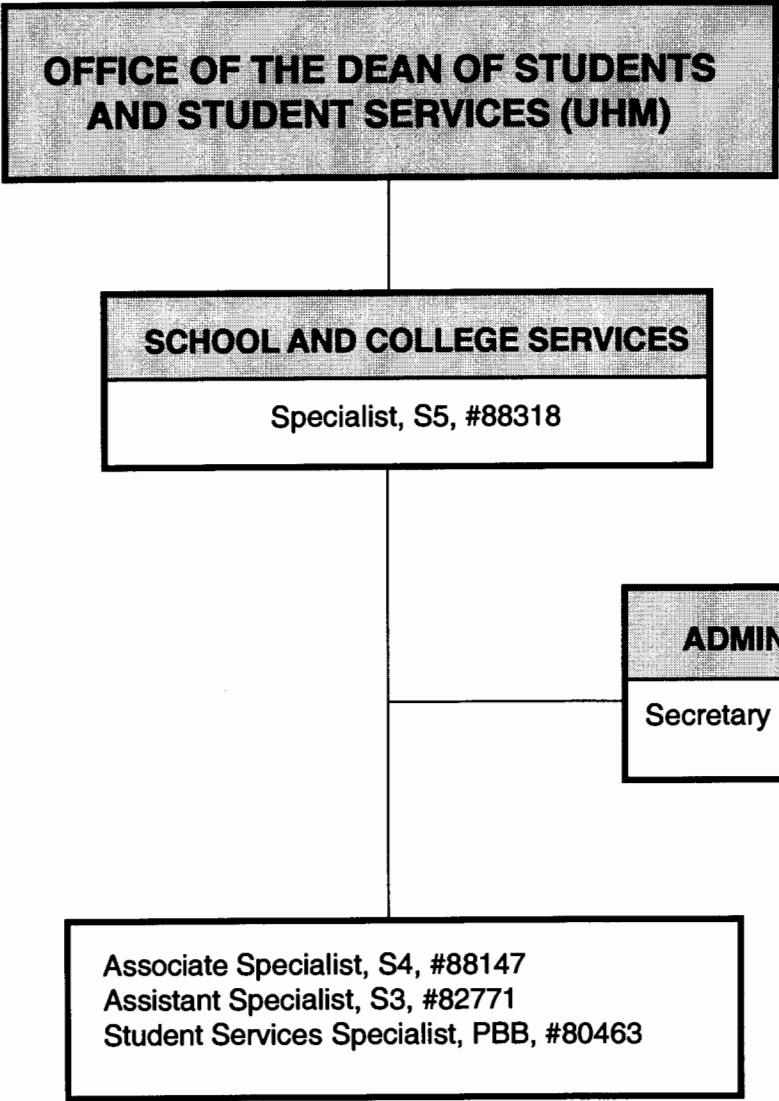


CHART UPDATED
DATE JUL - 1 2002

General Funds 5.00

Office:
UHM Student Services
Student Employment and
Cooperative Education

Chart: IV-G
[CURRENT]

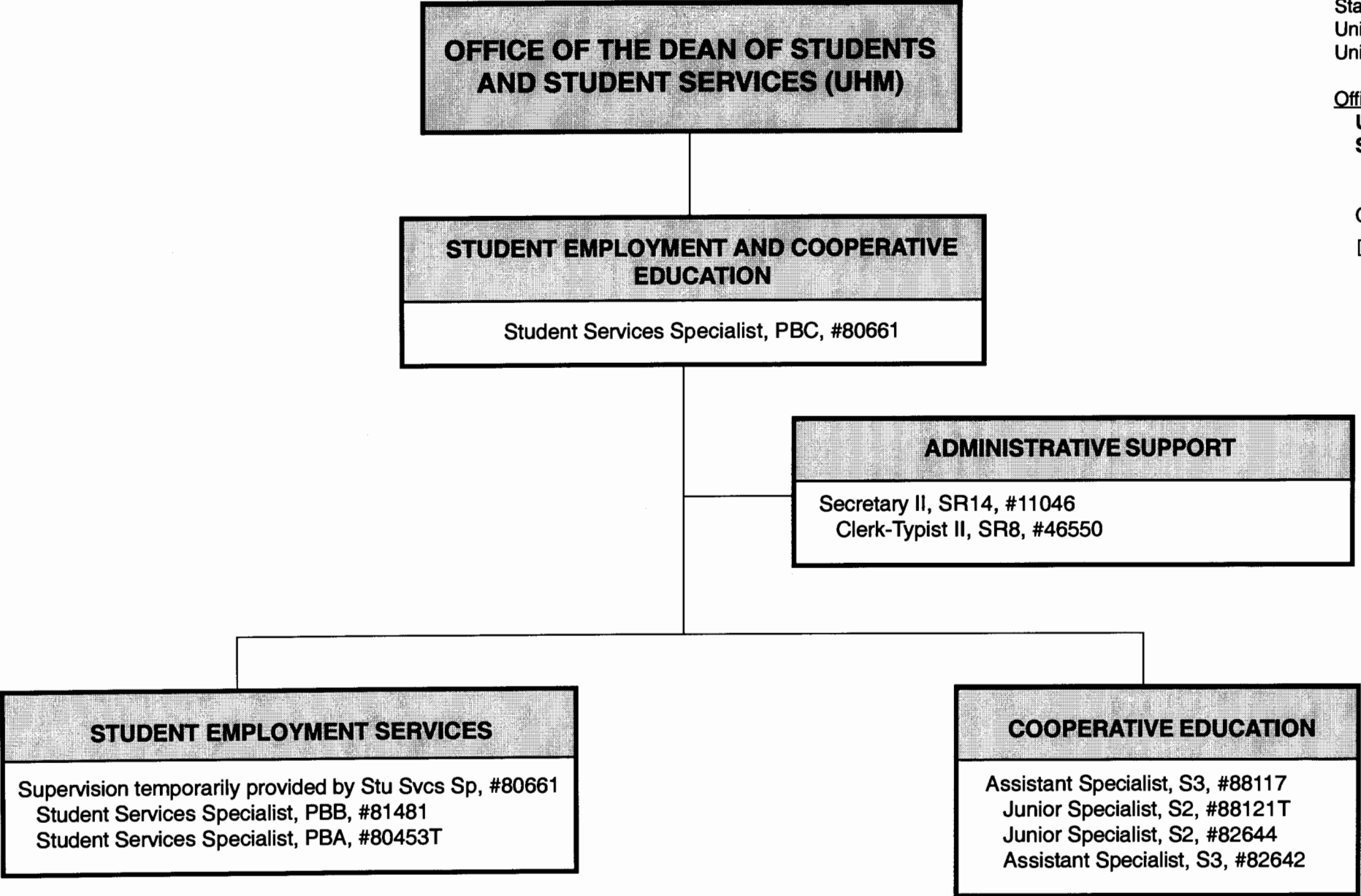


CHART UPDATED

DATE JUL - 1 2002

General Funds 7.00 (perm)
General Funds 2.00 (auth temp)

Office:
**UHM Student Services
International Student
Services**

Chart: IV-H
[CURRENT]

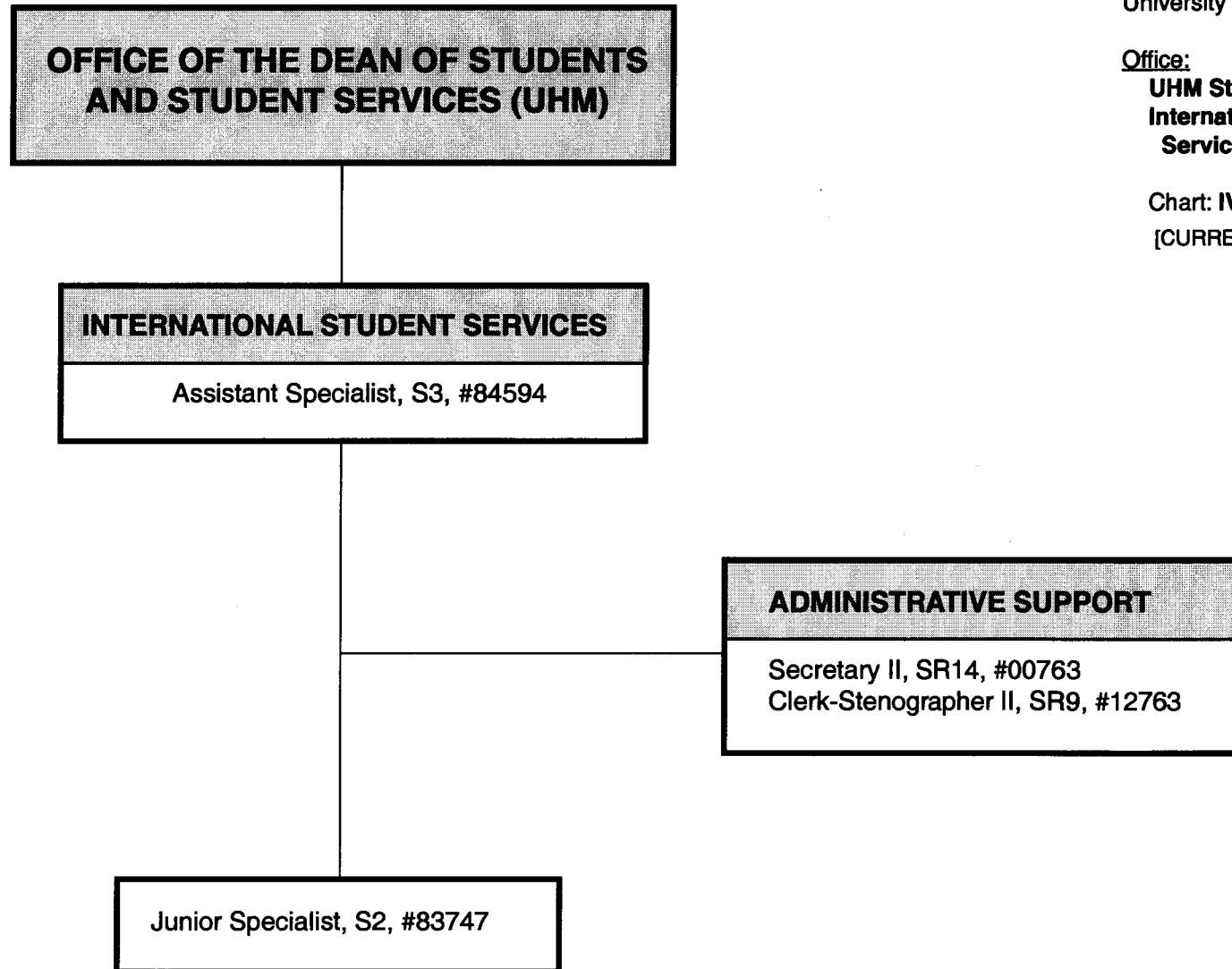


CHART UPDATED
DATE JUL - 1 2002

General Funds 4.00*

*2.00 FTE (#88126, #88327 for Study Abroad
transferred to Academic Affairs)

07/09/02

**OFFICE OF THE DEAN OF STUDENTS
AND STUDENT SERVICES (UHM)**

CAREER SERVICES

Specialist, S5, #83382

ADMINISTRATIVE SUPPORT

Secretary II, SR14, #14337

Junior Specialist, S2, #88125

Assistant Specialist, S3, #83548

Specialist, S5, #88325

Junior Specialist, S2, #88326

Student Services Specialist, PBB, #81434

State of Hawai'i
University of Hawai'i
University of Hawai'i at Mānoa

Office:
**UHM Student Services
Career Services**

Chart: IV-I
[CURRENT]

CHART UPDATED
DATE JUL - 1 2002

General Funds 7.00

Office:

**UHM Student Services
Counseling and Student
Development Center**

Chart: IV-J

[CURRENT]

**OFFICE OF THE DEAN OF STUDENTS
AND STUDENT SERVICES (UHM)**

**COUNSELING AND STUDENT
DEVELOPMENT CENTER**

Specialist, S5, #83151

ADMINISTRATIVE SUPPORT

Secretary II, SR14, #00746

LEARNING ASSISTANCE

Assistant Specialist, S3, #84554
Assistant Specialist, S3, #88143

TESTING

Student Services Specialist, PBB, #80632
Student Services Specialist, PBB, #81782

COUNSELING

Specialist, S5, #82048 (.50)
Specialist, S5, #83635 (.50)
Associate Specialist, S4, #82698
Associate Specialist, S4, #83114
Associate Specialist, S4, #84139

CHART UPDATED

DATE JUL - 1 2002

General Funds

10.00

Office:
UHM Student Services
University Health Services

Chart: IV-K
[CURRENT]

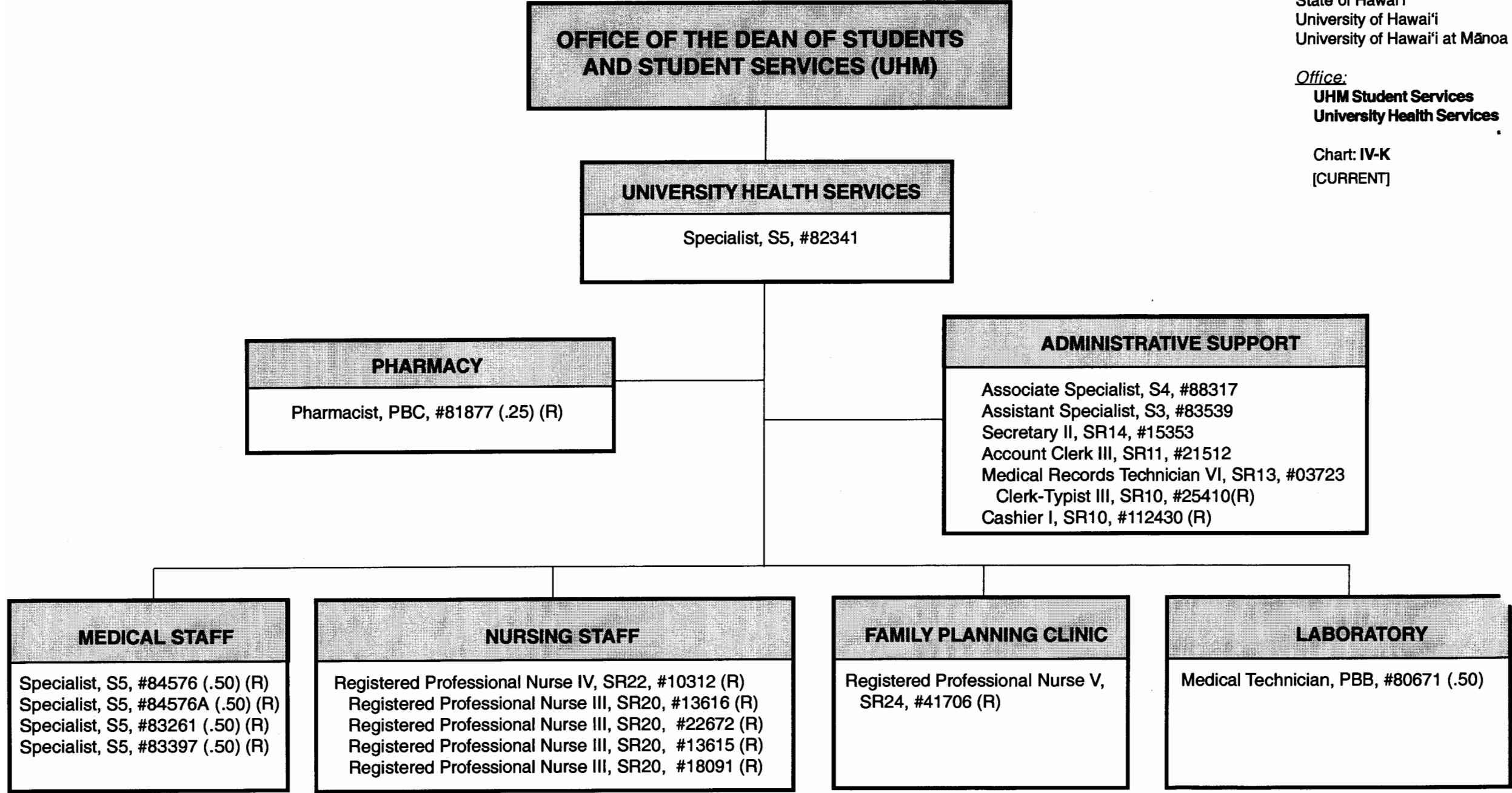


CHART UPDATED
DATE JUL - 1 2002

General Funds 6.50
Revolving Funds 10.25

**OFFICE OF THE DIRECTOR OF STUDENT
EQUITY, EXCELLENCE AND DIVERSITY**

COLLEGE OPPORTUNITIES PROGRAM
Educational Specialist, PBB, #80582

ADMINISTRATIVE SUPPORT
Secretary II, SR14, #23086

- Student Services Specialist, PBB, #80628
Student Services Specialist, PBB, #81736 (.50)
Student Services Specialist, PBB, #80606

State of Hawai'i
University of Hawai'i
University of Hawai'i at Mānoa

Office:
**UHM Student Services
College Opportunities
Program**

Chart: IV-L
[CURRENT]

CHART UPDATED
DATE JUL - 1 2002

General Funds 4.50

**OFFICE OF THE DIRECTOR OF STUDENT
EQUITY, EXCELLENCE AND DIVERSITY**

WOMEN'S CENTER

Junior Specialist, S2, #88123T, (.50)
Junior Specialist, S2, #88144T, (.50)

State of Hawai'i
University of Hawai'i
University of Hawai'i at Mānoa

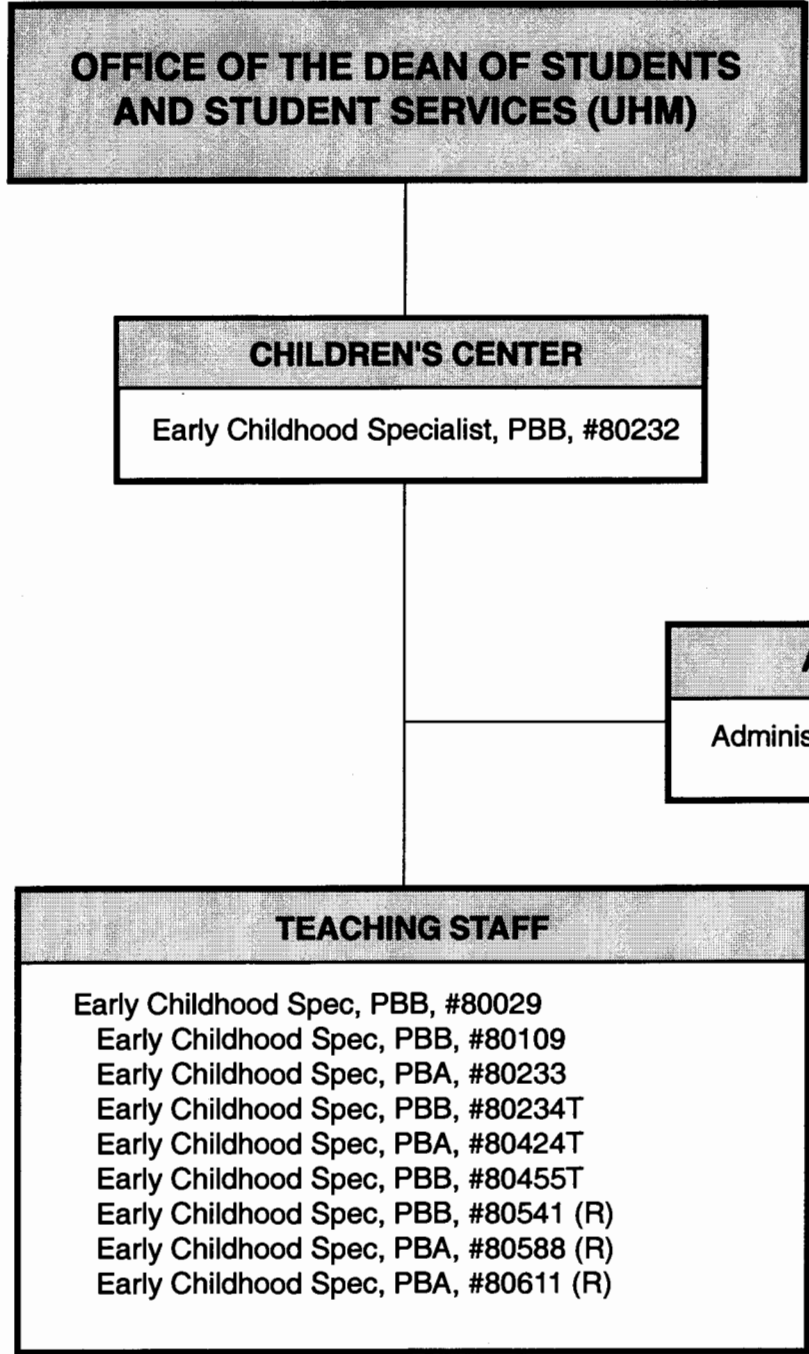
Office:
**UHM Student Services
Women's Center**

Chart: **IV-M**
[CURRENT]

CHART UPDATED
DATE JUL - 1 2002

Pending establishment 0.50 FTE, Pos. No. 84581

General Funds 1.00 (auth temp)
 0.50 (permanent)



State of Hawai'i
University of Hawai'i
University of Hawai'i at Mānoa

Office:
UHM Student Services
Children's Center

Chart: IV-N
[CURRENT]

CHART UPDATED
DATE JUL - 1 2002

General Funds	4.00 (perm)
General Funds	3.00 (auth temp)
Revolving Funds	4.00

**OFFICE OF THE DIRECTOR OF STUDENT
EQUITY, EXCELLENCE AND DIVERSITY**

**CENTER FOR ADULTS
RETURNING TO EDUCATION**

State of Hawai'i
University of Hawai'i
University of Hawai'i at Mānoa

Office:
**UHM Student Services
Center for Adults
Returning to Education**

Chart: **IV-O**
[CURRENT]

CHART UPDATED

DATE JUL - 1 2002

**OFFICE OF THE DIRECTOR OF STUDENT
EQUITY, EXCELLENCE AND DIVERSITY**

**HAWAI'I OPPORTUNITY PROGRAM
IN EDUCATION**

State of Hawai'i
University of Hawai'i
University of Hawai'i at Mānoa

Office:
**UHM Student Services
Hawai'i Opportunity
Program in Education**

Chart: **IV-P**
[CURRENT]

CHART UPDATED
DATE JUL - 1 2002

**OFFICE OF THE DIRECTOR OF STUDENT
EQUITY, EXCELLENCE AND DIVERSITY**

OPERATION KUA'ANA

Educational Specialist, PBB, #81904
Student Services Specialist, PBA, #81919

State of Hawai'i
University of Hawai'i
University of Hawai'i at Mānoa

Office:
**UHM Student Services
Operation Kua'ana**

Chart: **IV-Q**
[CURRENT]

CHART UPDATED

DATE JUL - 1 2002

General Funds 2.00

**OFFICE OF THE DIRECTOR OF STUDENT
EQUITY, EXCELLENCE AND DIVERSITY**

State of Hawai'i
University of Hawai'i
University of Hawai'i at Mānoa

Office:
**UHM Student Services
Office of Multicultural
Student Services**

Chart: IV-R
[CURRENT]

**OFFICE OF MULTICULTURAL
STUDENT SERVICES**

Educational Specialist, PBB, #80517

ADMINISTRATIVE SUPPORT

Clerk-Typist II, SR8, #43052

Associate Specialist, S4, #82281

Student Services Specialist, PBA, #81799

Student Services Specialist, PBA, #81801

CHART UPDATED
DATE JUL - 1 2002

General Funds 5.00

**OFFICE OF THE DIRECTOR OF STUDENT
EQUITY, EXCELLENCE AND DIVERSITY**

KOKUA PROGRAM
Educational Specialist, PBC, #80666

- Educational Specialist, PBB, #80636
- Educational Specialist, PBB, #80608
- Educational Specialist, PBB, #81566
- Educational Specialist, PBA, #81102
- Administrative Officer, PBA, #77032

State of Hawai'i
University of Hawai'i
University of Hawai'i at Mānoa

Office:
**UHM Student Services
KOKUA Program**

Chart: **IV-S**
[CURRENT]

CHART UPDATED

DATE JUL - 1 2002

General Funds 6.00