

State of Hawai'i
University of Hawai'i
University of Hawai'i - West O'ahu

Position Organization Chart

Chart I

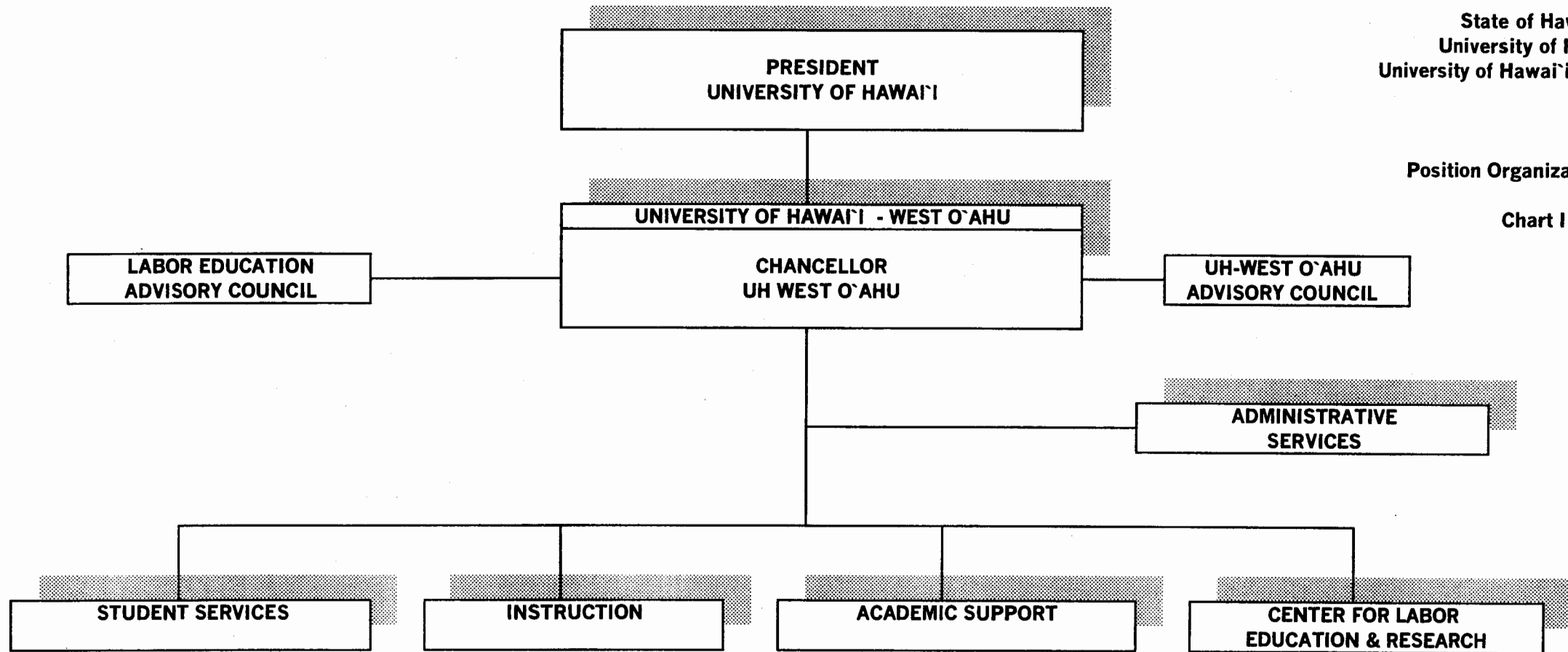


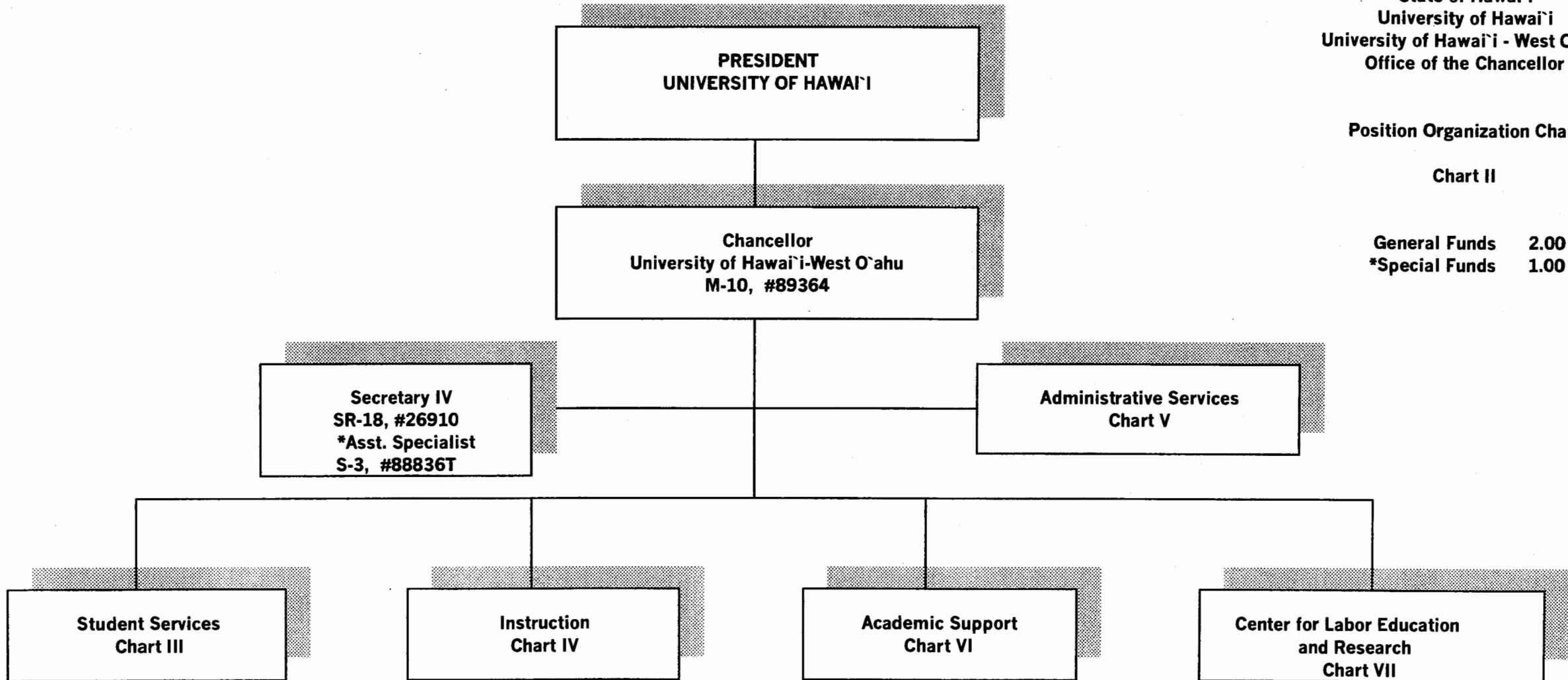
CHART UPDATED
DATE JUL - 1 2002

State of Hawai'i
University of Hawai'i
University of Hawai'i - West O'ahu
Office of the Chancellor

Position Organization Chart

Chart II

General Funds 2.00
*Special Funds 1.00



* Temporary Assistant Specialist, Special Funds

CHART UPDATED
JUL - 1 2002
DATE _____

State of Hawai'i
University of Hawai'i
University of Hawai'i - West O'ahu
Student Services

Position Organization Chart

Chart III

General Funds 7.00

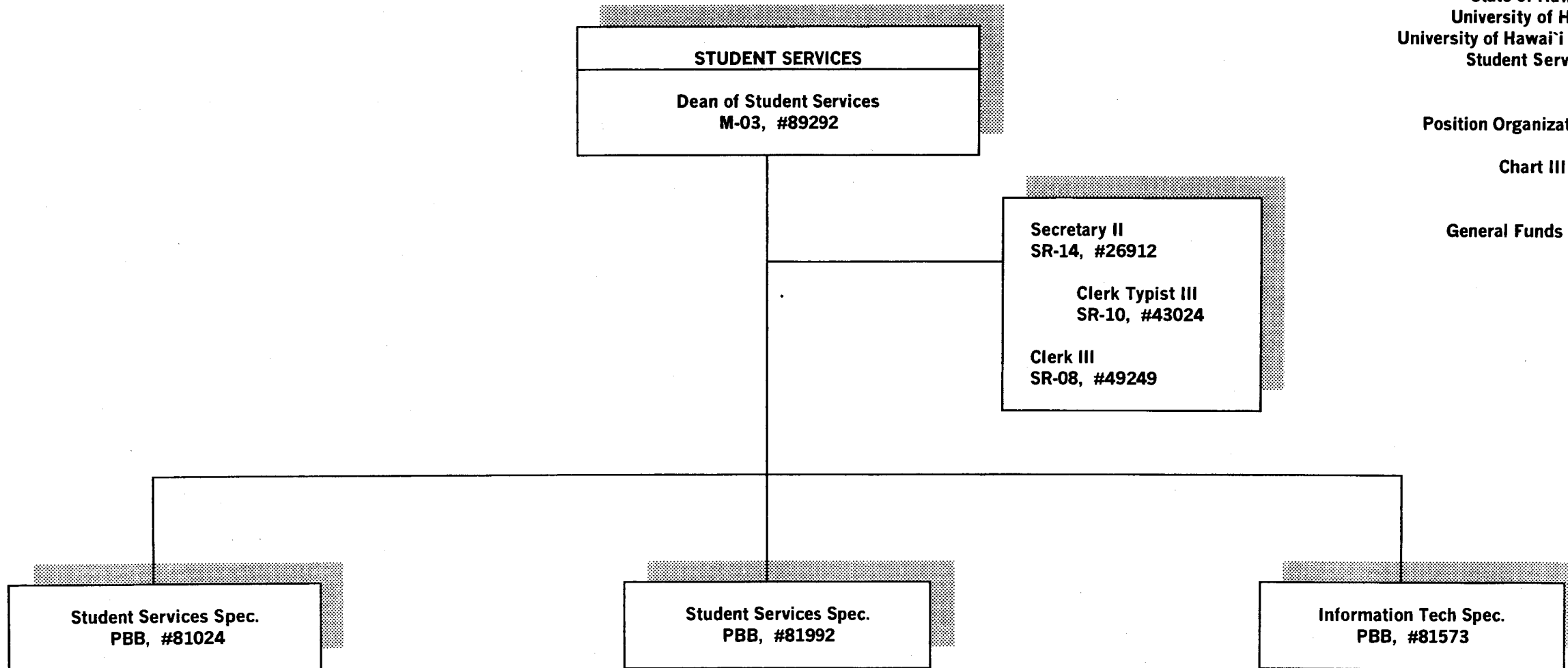


CHART UPDATED

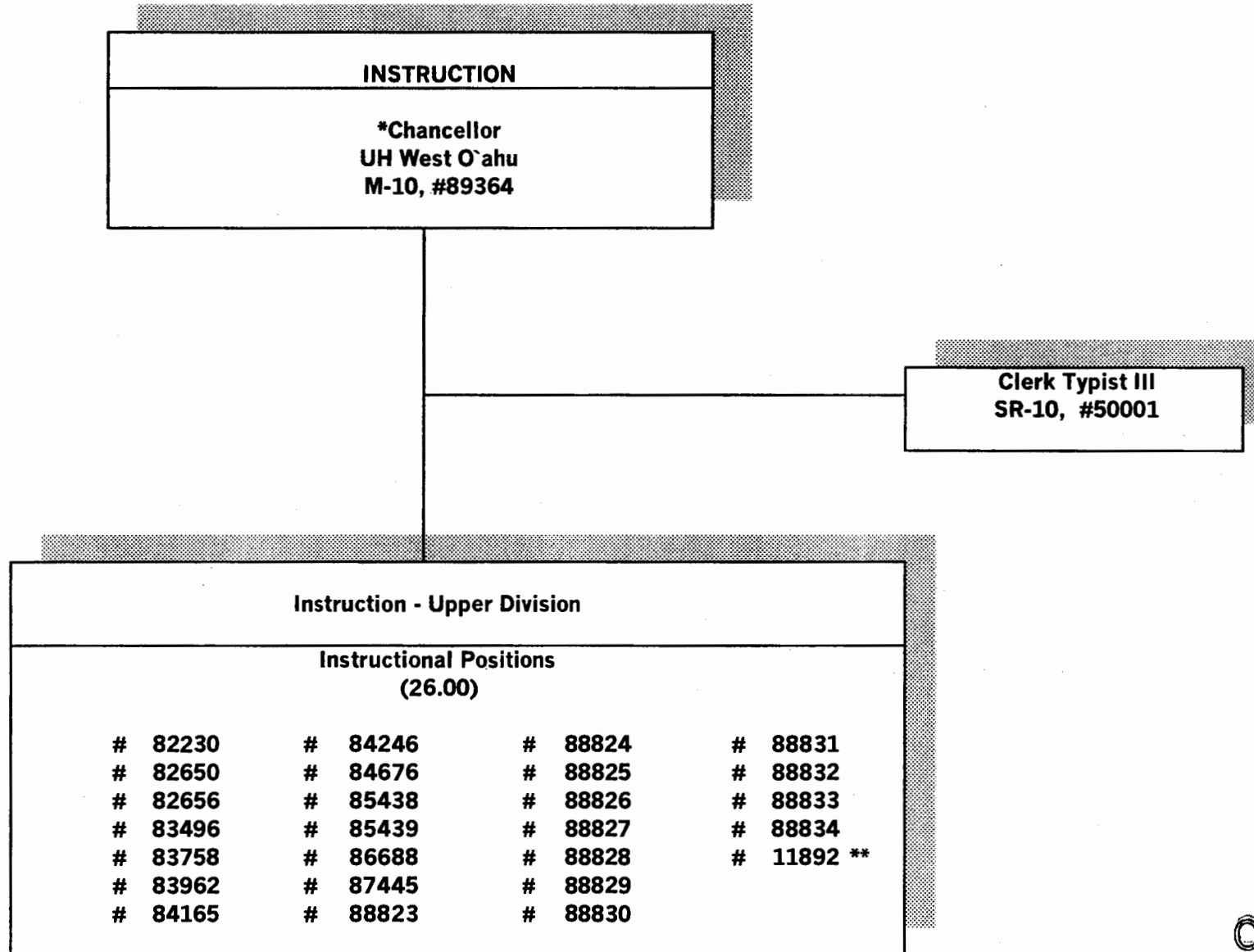
DATE JUL - 1 2002

State of Hawai'i
University of Hawai'i
University of Hawai'i - West O'ahu
Instruction

Position Organization Chart

Chart IV

General Funds 27.00



*Position count not included on this page

**Position count returned, position pending establishment to an instructor.

Temporary Clerk Typist II, SR-08 special funded position, not included in position count.

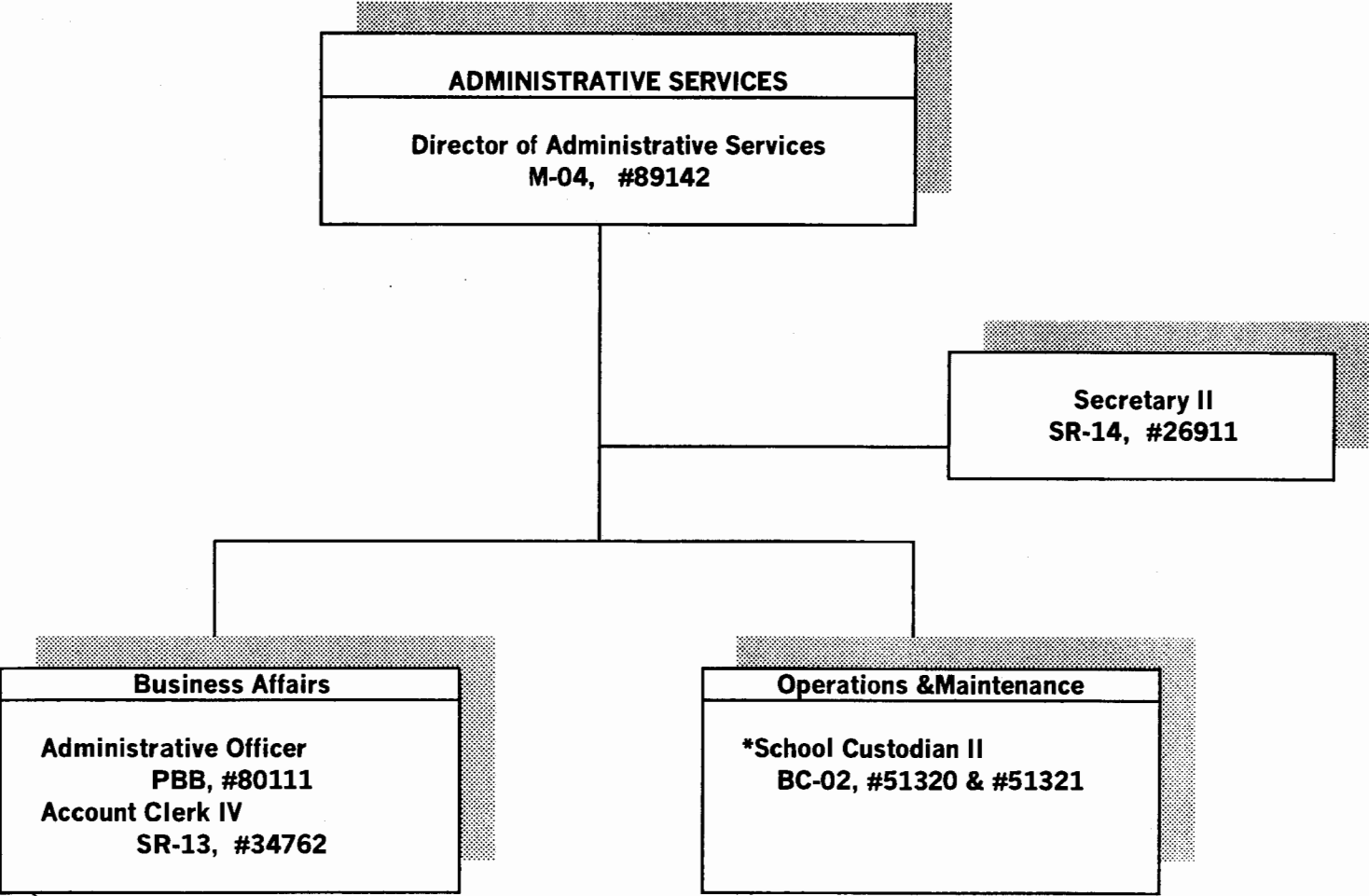
CHART UPDATED
DATE JUL - 1 2002

State of Hawai'i
University of Hawai'i
University of Hawai'i - West O'ahu
Administrative Services

Position Organization Chart

Chart V

General Funds 4.00
*General Funds 2.00 Tem



*The two School Custodians are temporary, general funded positions.

CHART UPDATED
DATE JUL - 1 2002

State of Hawai'i
University of Hawai'i
University of Hawai'i - West O'ahu
Academic Support

Position Organization Chart

Chart VI

General Funds 2.50

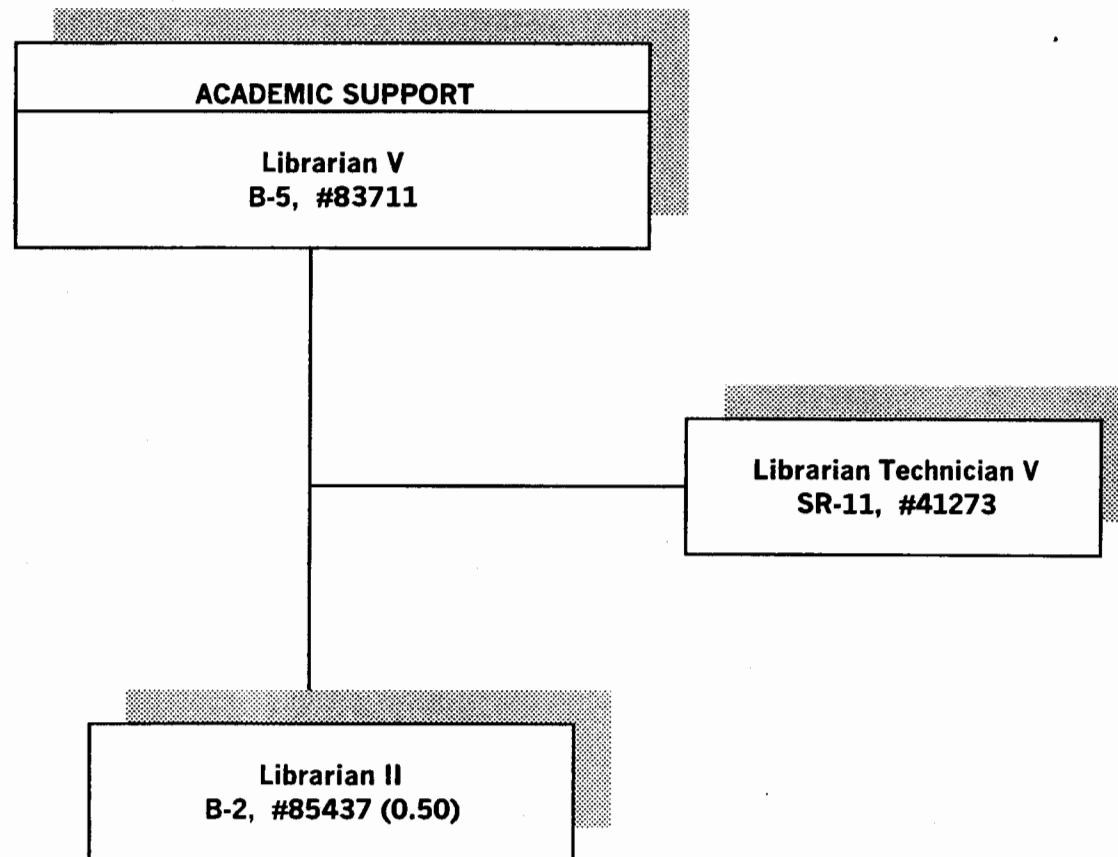


CHART UPDATED
DATE JUL - 1 2002

State of Hawai'i
University of Hawai'i
University of Hawai'i - West O'ahu
Center for Labor Education and Research

Position Organization Chart

Chart VII

General Funds 5.00

CENTER FOR LABOR EDUCATION
AND RESEARCH

***Specialist**
S-5, #85401

Secretary II
SR-14, #14847

Assistant Specialist
S-3, #85174

Associate Specialist
S-4, #85180

Associate Specialist
S-4, #85402

***Director**

CHART UPDATED

DATE JUL - 1 2002