

STATE OF HAWAII
UNIVERSITY OF HAWAII
COMMUNITY COLLEGES
HONOLULU COMMUNITY COLLEGE

Organization Chart

Chart I

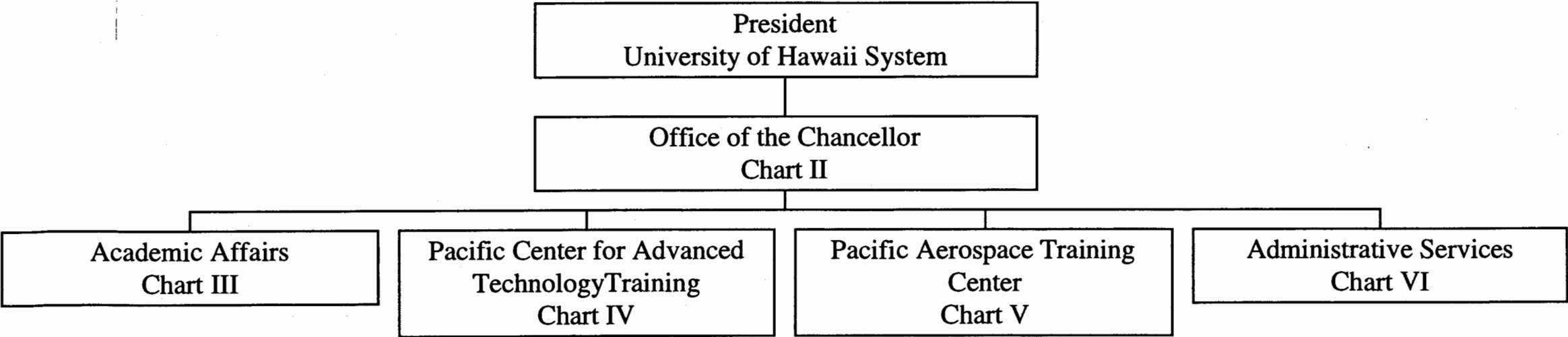


CHART UPDATED

DATE JUL - 1 2003

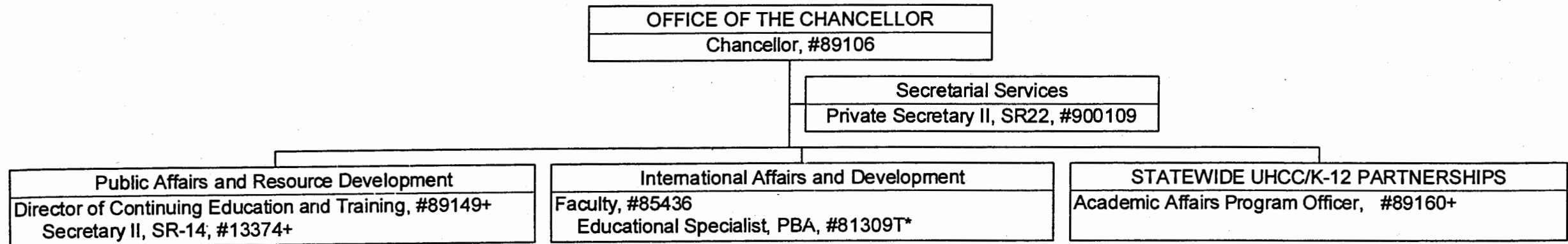
	<u>Perm</u>	<u>Temp</u>
General Fund	277.00	7.00
(B) Special Funds	19.00	
(W) Revolving Funds	2.50	

PROPOSED ORGANIZATIONAL CHART

STATE OF HAWAII
UNIVERSITY OF HAWAII
COMMUNITY COLLEGES
HONOLULU COMMUNITY COLLEGE
OFFICE OF THE CHANCELLOR

Organization Chart

Chart II



APPROVED BY THE UNIVERSITY
BOARD OF REGENTS

NOV 21 2003

Date

- * Temporary Position
- + Position to be redescribed

	<u>Perm</u>	<u>Temp</u>
General Fund	6.00	1.00

STATE OF HAWAII
 UNIVERSITY OF HAWAII
 COMMUNITY COLLEGES
 HONOLULU COMMUNITY COLLEGE
 ACADEMIC AFFAIRS

Organization Chart

Chart III

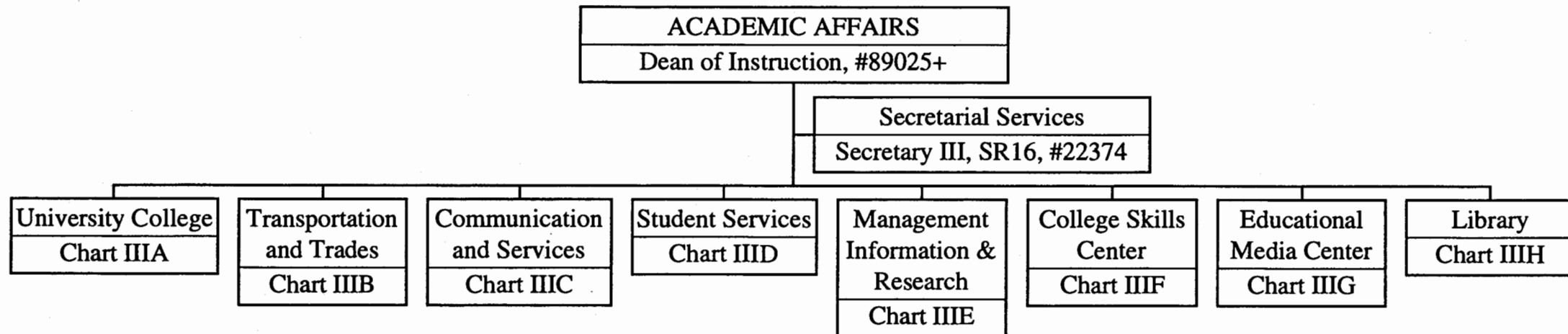


CHART UPDATED

DATE JUL - 1 2003

+ Position to be redescribed

General Fund Perm
 2.00

STATE OF HAWAII
UNIVERSITY OF HAWAII
COMMUNITY COLLEGES
HONOLULU COMMUNITY COLLEGE
ACADEMIC AFFAIRS

Organiztion Chart

Chart IIIA

University College
Assistant Dean, #89111+

Secretarial Services
Secretary II, SR14, #24735
Clerk Stenographer II, SR09, #27069+

Liberal Arts Program
Division Chair % <u>Faculty</u> (50.00) Anthropology, #83341 Asian Pacific Language, #83966 Asian Studies, #86638 Biological Science, #82585, 84135 Chemistry, #83964 Economics, #82987 English, #82440, 82466, 82561, 82796, 82912, 82959, 83416, 83698, 83807, 84545, 84633, 87562 Fine Art, #83885, 84471 Geography, #83820 Hawaiian Studies, #84689 History, #82283, 83911 Mathematics, #82689, 82898, 83062, 83282, 83687, 83797, 84096, 84562, 84638 Oceanography, #82773 Philosophy, #82854, 83930 Physical Science, #82222, 83431, 83708, 83881 Psychology, #82197, 84591 Religion, #82113 Science, #82331 Social Science, #83893, 84457 Sociology, #82406 Speech, #82964, 83423

Off-Campus Programs
Faculty, #83174 Educational Specialist, PBA, #80031(B), 81416 (B) Clerk Typist II, SR08, #40844

CHART UPDATED
DATE JUL - 1 2003

- + To be redescribed
- % Division Chair is appointed from any faculty position in the College.
Multiple Division Chairs may be appointed but each position in the
Division has only one immediate supervisor.

	Perm
General Fund	55.00
(B) Special Funds	2.00

STATE OF HAWAII
UNIVERSITY OF HAWAII
COMMUNITY COLLEGES
HONOLULU COMMUNITY COLLEGE
ACADEMIC AFFAIRS

Organization Chart

Chart IIIB

Transportation and Trades
Assistant Dean, #89209+

Secretarial Services
Secretary II, SR14, #45367
Clerk Stenographer II, SR09, #27070+

Division Chair % Faculty (29.00) Apprenticeship and Applied Trades, #83298 Clerk Typist III, SR10, #14215 Auto Body Repair and Painting, #84405, 86667 Automotive Mechanics Technology, #83725, 83801, 84064, 84410, 84586, 84884 Carpentry, #82384 Cooperative Education, #82444, 83604, 87168, 93626F\$ Diesel Mechanics Technology, #84480 Drafting Technology, #82092, 82956, 83167 Electrical Installation and Maintenance Technology, #82757, 83368 Fire and Environmental Emergency Response, #83639 Boat Maintenance and Repair, #84688, 86927 Educational Specialist, PBB, #80652+@, 81182+@ Occupational and Environmental Safety Management, #83673 Refrigeration and Air Conditioning, #82422, 82518 Sheet Metal and Plastics, #84368 Welding, #83212, 84660 Educational Specialist, PBB, #81561, 81991(B)+ Educational Specialist, PBA, #81562
--

- + To be redescribed
- % Division Chair is appointed from any faculty position in the College.
Multiple Division Chairs may be appointed but each position in the Division has only one immediate supervisor.
- @ Supervised by one of the faculty positions
- \$ To be established

CHART UPDATED
DATE JUL - 1 2003

	<u>Perm</u>
General Fund	37.00
(B) Special Funds	1.00

STATE OF HAWAII
UNIVERSITY OF HAWAII
COMMUNITY COLLEGES
HONOLULU COMMUNITY COLLEGE

Communication and Services
Assistant Dean, #89170+

Secretarial Services
Secretary II, SR14, #01825
Clerk Typist III, SR10, #44568
Clerk Stenographer II, SR09, #27068+

Organization Chart

Chart III C

Communication and Services Programs
<p>Division Chair %</p> <p><u>Faculty (29.00)</u></p> <p>Administration of Justice, #83339</p> <p>Communication Arts, #82969, 83894</p> <p>Computing, Electronics, and Networking Technology, #83116, 83699, 86615, 86620, 86677</p> <p>Cosmetology, #82990, 83649, 83825, 84099</p> <p>Educational and Academic Support Specialist, PBA, #80879(B)+ @</p> <p>Fashion Technology, #84681</p> <p>Food Science and Human Nutrition, #82883</p> <p>Human Services, #82843, 83529, 83838, 84122, 86639, 86907, 86909, 86980, 87028, 87029, 87031, 87032</p> <p>Early Childhood Specialist, 94626F(B)\$</p> <p>Early Childhood Specialist, PBB, #80699, 81576, 81679, 81786, 81822, 80809(B), 80817(B), 80831(B)</p> <p>Early Childhood Specialist, PBA, 80832(B)^, 80834(B)^, 80835(B)^, 80839(B)^, 80844(B)^, 80845(B)^, 80846(B)^, 80862(B)^</p> <p>Information and Computer Science, #82233, 83138, 84669</p> <p>Educational Specialist, PBB, #81165+</p> <p>Educational and Academic Support Specialist, PBA, #80877(B)</p>

- + To be redescribed
- % Division Chair is appointed from any faculty position in the College.
Multiple Division Chairs may be appointed but each position in the Division has only one supervisor.
- @ Supervised by one of the faculty positions
- ^ Supervised by one of the senior APT positions
- \$ To be established

CHART UPDATED

DATE JUL - 1 2003

	<u>Perm</u>
General Fund	39.00
(B) Special Funds	14.00

STATE OF HAWAII
UNIVERSITY OF HAWAII
COMMUNITY COLLEGES
HONOLULU COMMUNITY COLLEGE
ACADEMIC AFFAIRS

Organization Chart

Chart IIID

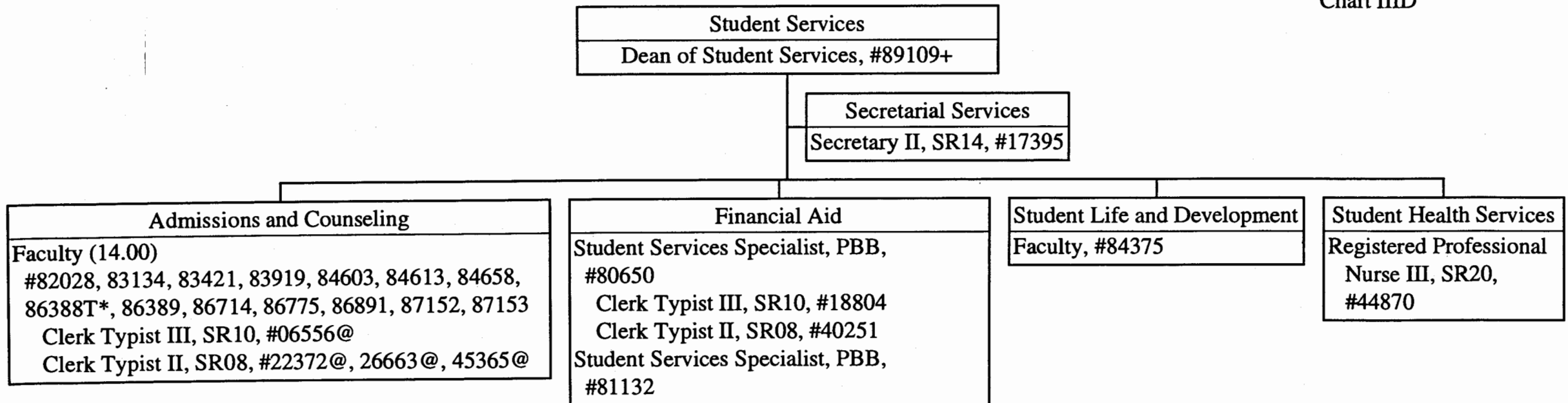


CHART UPDATED

DATE JUL - 1 2003

- * Temporary Position
- + To be redescribed
- @ Supervised by one of the faculty positions

General Fund Perm Temp
25.00 1.00

STATE OF HAWAII
UNIVERSITY OF HAWAII
COMMUNITY COLLEGES
HONOLULU COMMUNITY COLLEGE
ACADEMIC AFFAIRS

Organization Chart

Chart IIIE

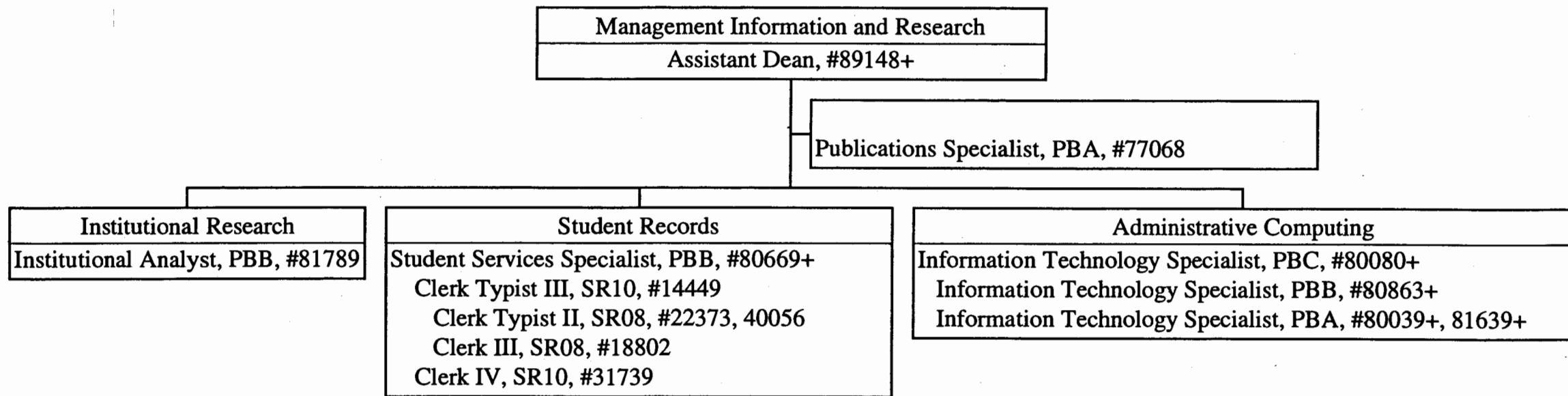


CHART UPDATED

DATE JUL - 1 2003

+ To be redescribed

General Fund Perm
13.00

STATE OF HAWAII
UNIVERSITY OF HAWAII
COMMUNITY COLLEGES
HONOLULU COMMUNITY COLLEGE
ACADEMIC AFFAIRS

Organization Chart

Chart IIIF

College Skills Center
Faculty (4.00) #83695, 86804, 86849, 86854 Educational Specialist, PBB, #81975@ Educational Specialist, PBA, #81973@, 81974@, 81788@ Clerk Stenographer II, SR09, #26748@

CHART UPDATED
DATE JUL - 1 2003

@ Supervised by one of the faculty positions

Perm
General Fund 9.00

STATE OF HAWAII
UNIVERSITY OF HAWAII
COMMUNITY COLLEGES
HONOLULU COMMUNITY COLLEGE
ACADEMIC AFFAIRS

Organization Chart

Chart IIIG

Educational Media Center
Faculty (Director), #84542 Media Specialist, PBB, #81478 Media Specialist, PBA, #80614, 80692 Electronics Technician, PBB, #80260, 81203T* Publications Specialist, PBB, #80711 Offset Press Operator II, BC08, #45710+ Duplicating Machine Operator III, SR09, #18803+ Clerk Typist II, SR08, #22371

CHART UPDATED

DATE JUL - 1 2003

* Temporary Position
+ To be redescribed

	<u>Perm</u>	<u>Temp</u>
General Fund	9.00	1.00

STATE OF HAWAII
UNIVERSITY OF HAWAII
COMMUNITY COLLEGES
HONOLULU COMMUNITY COLLEGE
ACADEMIC AFFAIRS

Organization Chart

Chart IIH

Library
Faculty, #84693
Library Technician V, SR11, #16960
Library Assistant IV, SR09, #22370
Faculty, #83150
Library Technician V, SR11, #18657
Library Assistant IV, SR09, #18801, 24011, 26783
Faculty, #82339, 83418, 83998
Faculty, #86796T*

CHART UPDATED

DATE JUL - 1 2003

* Temporary Position

	<u>Perm</u>	<u>Temp</u>
General Fund	11.00	1.00

STATE OF HAWAII
 UNIVERSITY OF HAWAII
 COMMUNITY COLLEGES
 HONOLULU COMMUNITY COLLEGE
 PACIFIC CENTER FOR ADVANCED
 TECHNOLOGY TRAINING
Organization Chart

Chart IV

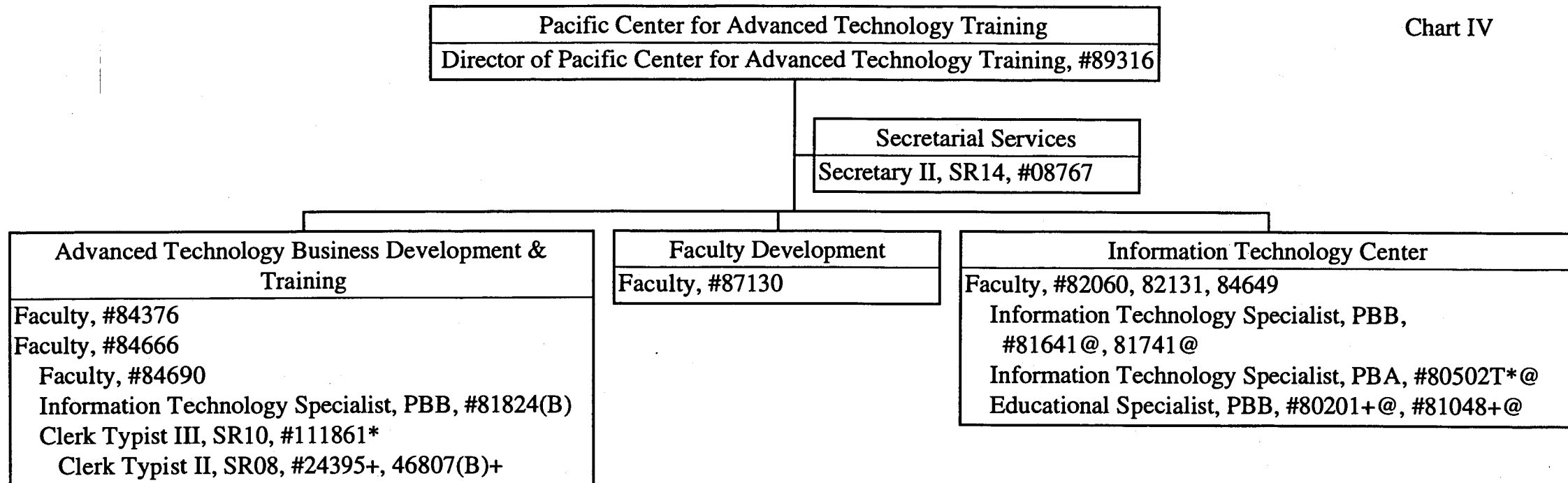


CHART UPDATED
 DATE JUL - 1 2003

* Temporary Position
 + To be redescribed
 @ Supervised by one of the faculty positions

	<u>Perm</u>	<u>Temp</u>
General Fund	14.00	2.00
(B) Special Funds	2.00	

STATE OF HAWAII
UNIVERSITY OF HAWAII
COMMUNITY COLLEGES
HONOLULU COMMUNITY COLLEGE
ADMINISTRATIVE SERVICES

Organization Chart

Chart V

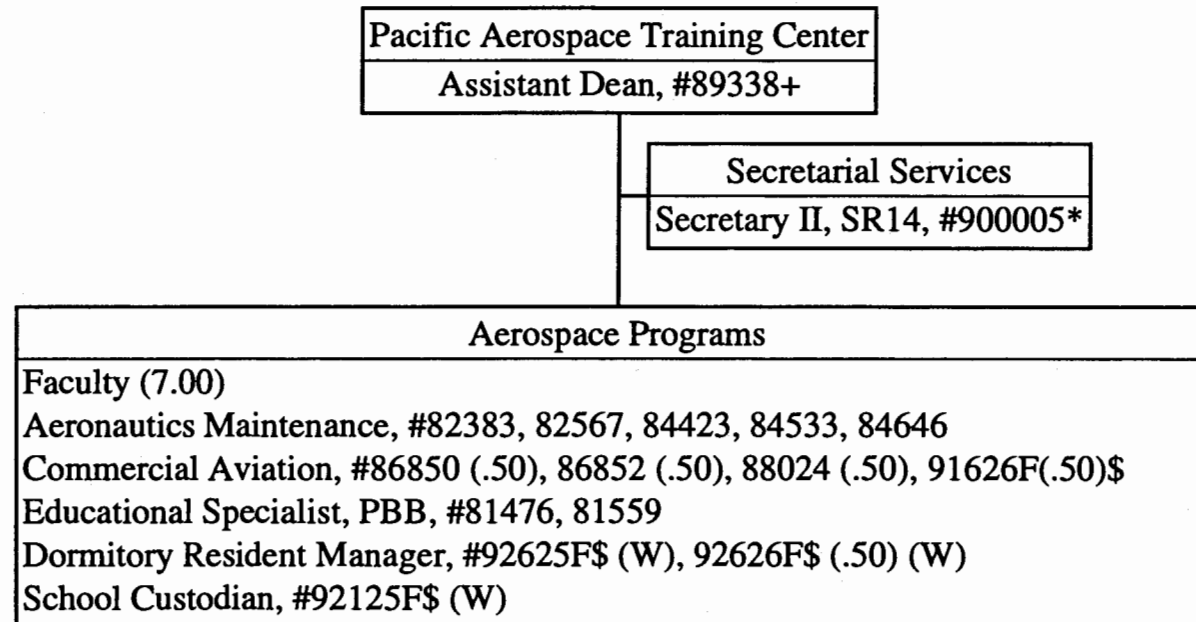


CHART UPDATED

DATE JUL - 1 2003

- * Temporary Position
- + To be redescribed
- \$ To be established

	<u>Perm</u>	<u>Temp</u>
General Fund	10.00	1.00
(W) Revolving Funds	2.50	

STATE OF HAWAII
UNIVERSITY OF HAWAII
COMMUNITY COLLEGES
HONOLULU COMMUNITY COLLEGE
ADMINISTRATIVE SERVICES

Organization Chart

Chart VI

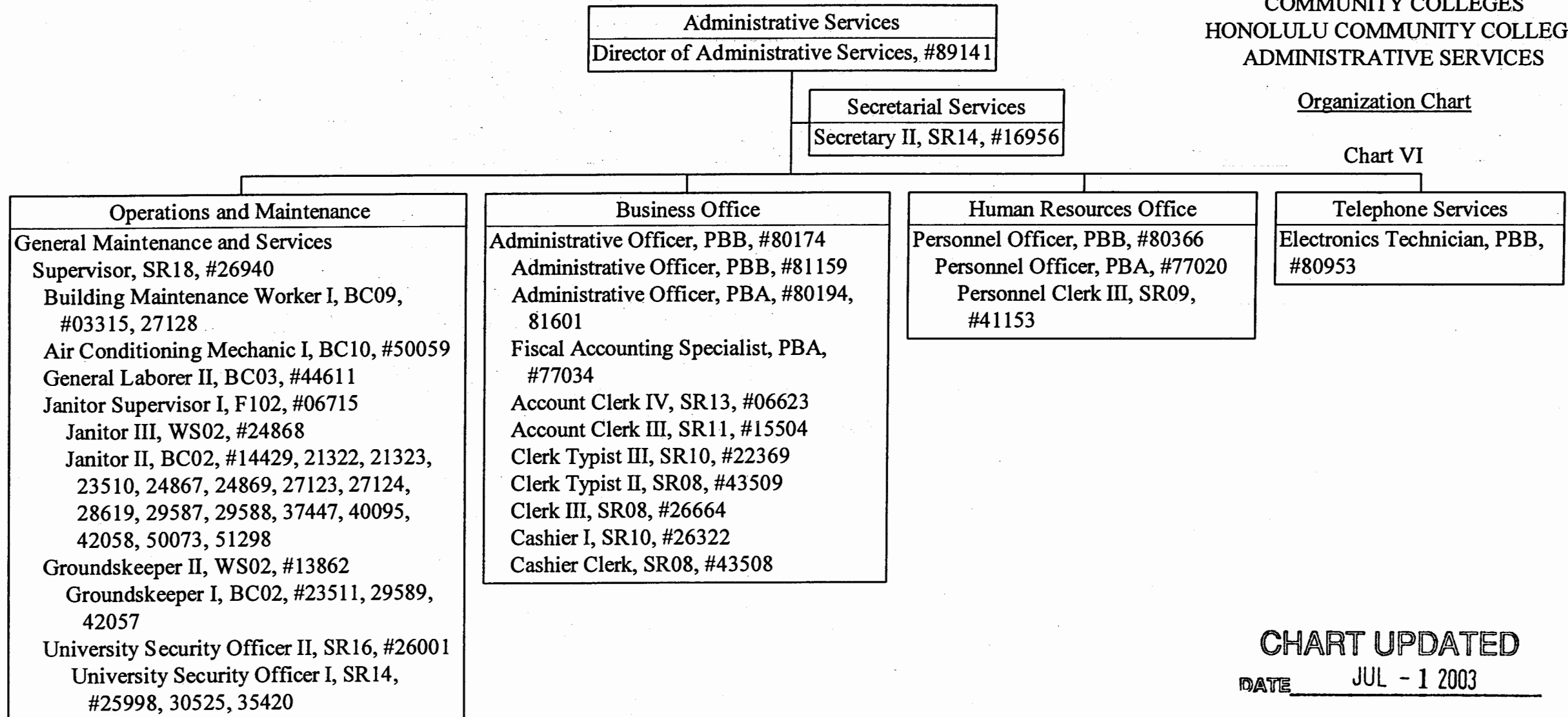


CHART UPDATED

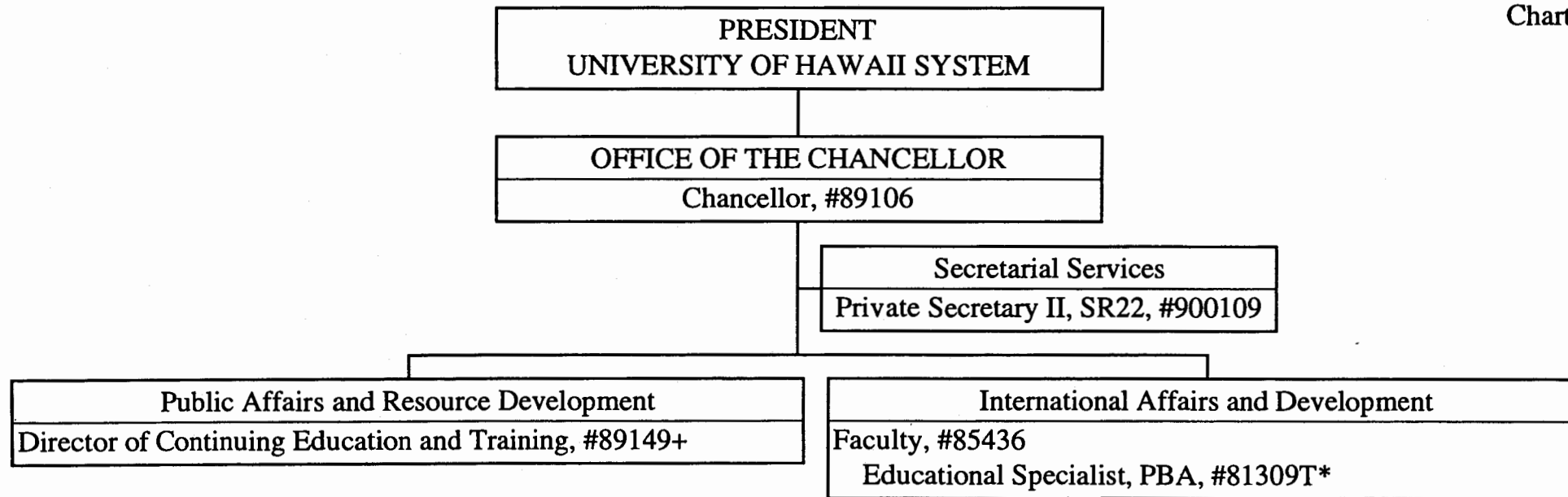
DATE JUL - 1 2003

General Fund Perm
49.00

STATE OF HAWAII
UNIVERSITY OF HAWAII
COMMUNITY COLLEGES
HONOLULU COMMUNITY COLLEGE
OFFICE OF THE CHANCELLOR

Organization Chart

Chart II



SUPERSEDED
Date NOV 21 2003

CHART UPDATED
DATE JUL - 1 2003

- * Temporary Position
- + Position to be redescribed

	<u>Perm</u>	<u>Temp</u>
General Fund	4.00	1.00