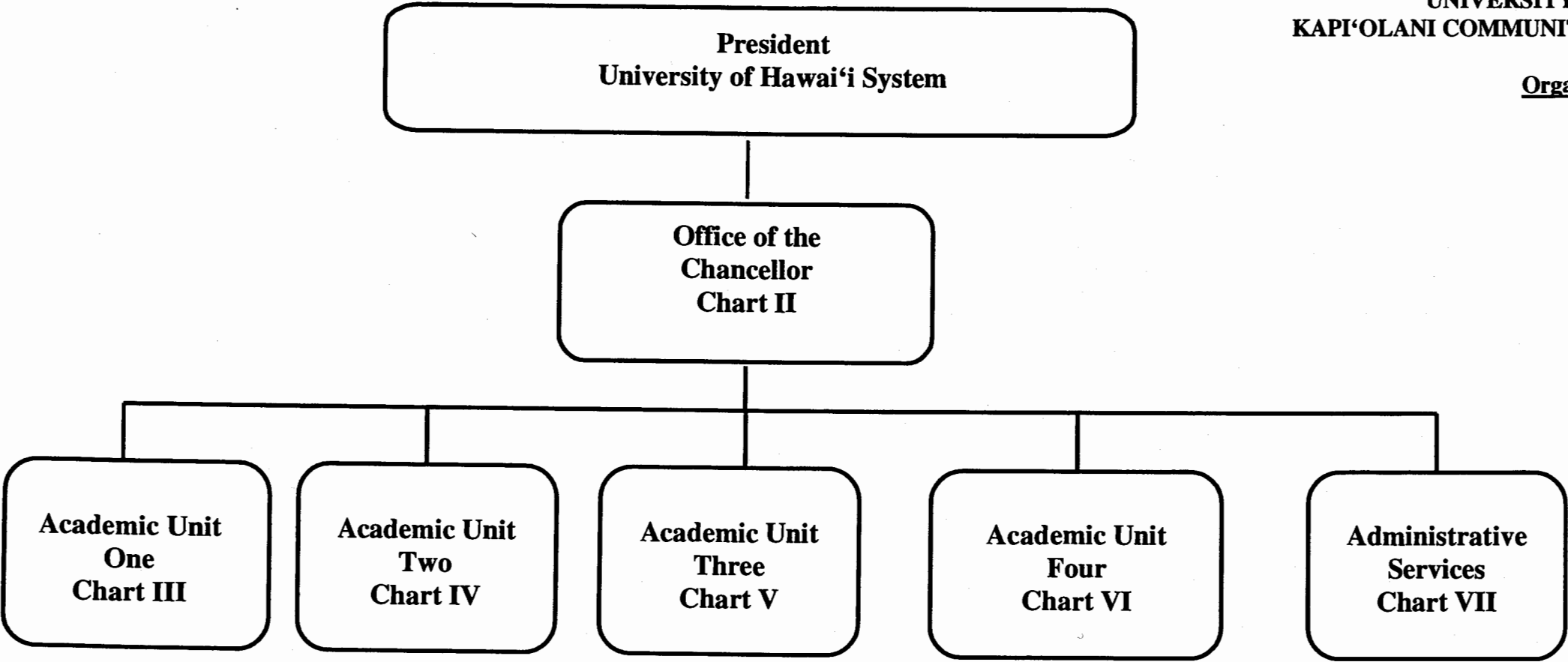


STATE OF HAWAI'I  
UNIVERSITY OF HAWAI'I  
KAPI'OLANI COMMUNITY COLLEGE

Organization Chart

Chart I



	<u>Perm</u>	<u>Temp</u>
General Fund	340.00	27.50
(B) Special Funds	24.00	

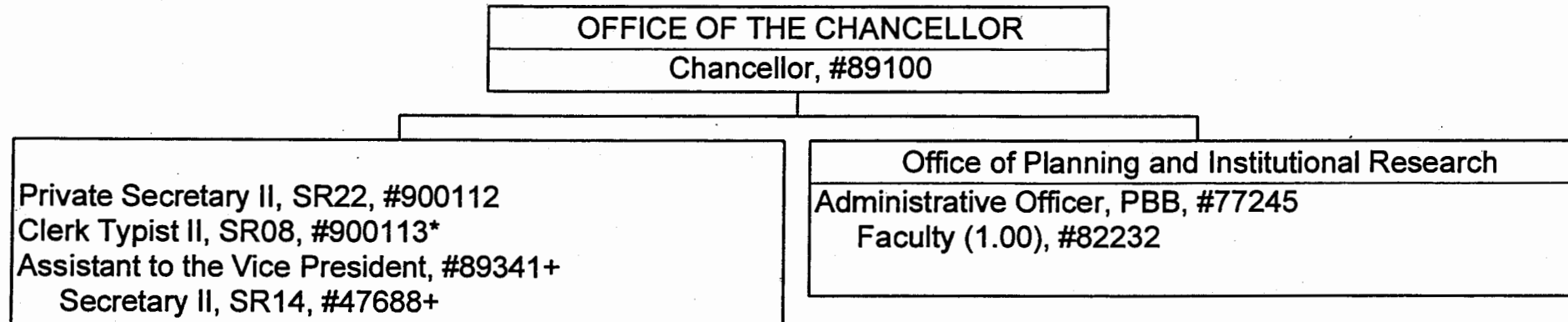
CHART UPDATED  
DATE JUL - 1 2003

# PROPOSED ORGANIZATIONAL CHART

STATE OF HAWAII  
UNIVERSITY OF HAWAII  
COMMUNITY COLLEGES  
KAPIOLANI COMMUNITY COLLEGE  
OFFICE OF THE CHANCELLOR

Organization Chart

Chart II



APPROVED BY THE UNIVERSITY  
BOARD OF REGENTS  
NOV 21 2003

Date

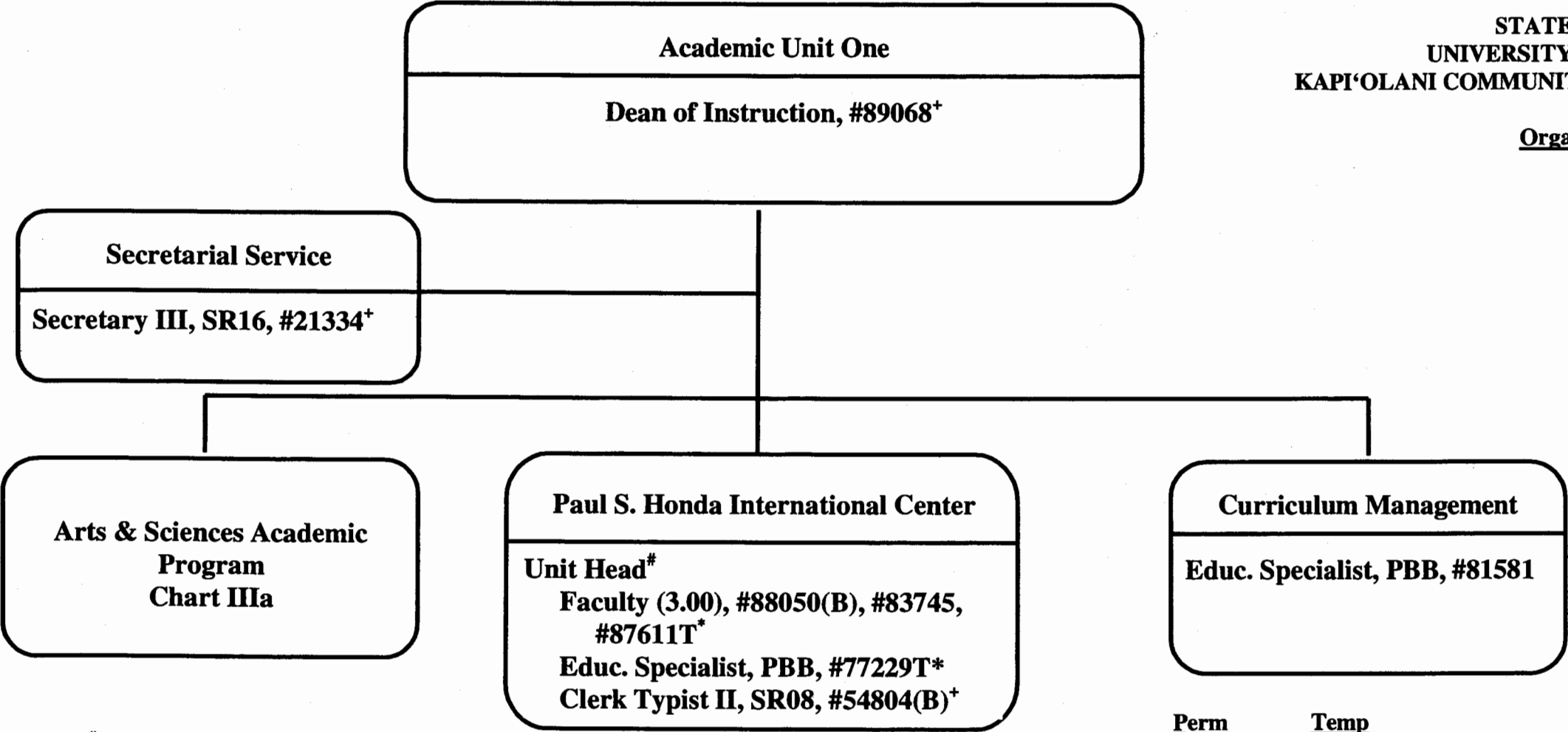
- \* Temporary Position
- + Position to be redescribed

	<u>Perm</u>	<u>Temp</u>
General Fund	6.00	1.00

STATE OF HAWAI'I  
UNIVERSITY OF HAWAI'I  
KAPI'OLANI COMMUNITY COLLEGE

Organization Chart

Chart III



\*Unit Head is appointed from among the faculty positions  
\*Temporary Position  
\*To be redescribed & submitted for classification review

General Fund  
(B) Special Funds

<u>Perm</u>	<u>Temp</u>
4.00	2.00
2.00	

CHART UPDATED  
DATE JUL - 1 2003

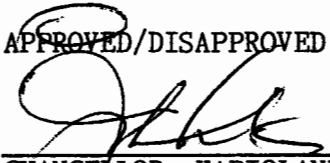
STATE OF HAWAII  
UNIVERSITY OF HAWAII  
KAPI'OLANI COMMUNITY COLLEGE

Organization Chart

Chart IIIa

Arts & Sciences Academic Program	
Humanities	
Chairperson*	
Faculty (24.00)	
Full-time:	#82052, #82429, #82607, #82631, #82803, #82840, #82876, #82925, #82937, #82983, #83094, #83809, #83967, #84470, #84882, #84971, #84974, #86602, #86937, #87402, #87404, #86696T*, 87072T*, #87074T*
Information Technology Specialist, PBA, #81068T*	
Language Arts	
Chairperson*	
Faculty (34.00),	
Full-time:	#82135, #82178, #82231, #82447, #82555, #82653, #82776, #83123, #83308, #83447, #83521, #83559, #83783, #83795, #83810, #83903, #84327, #84409, #84623, #86594, #86595, #86596, #86604, #86798, #86803, #86809, #86945, #86960, #87084T*, #87102, #87120, #87143T*, #87583T*
Part-time:	#82540 (0.50 FTE), #86799 (0.50 FTE)
Mathematics/Science	
Chairperson*	
Faculty (27.00)	
Full-time:	#82031, #82394, #82492, #82910, #82981, #83096, #83262, #83357, #83688, #83733, #83939, #83974, #84458, #84836, #86592, #86593, #86600, #86606, #86718, #86754, #86827, #86830, #86845, #86959, #87401, #86947T*, #88032T*
Educational Specialist, PBB, #81246	
Social Sciences	
Chairperson*	
Faculty (11.00)-	
Full-time:	#82152, #82706, #82935, #83492, #83560, #83642, #84972, #84973, #86599, #86938, #87403
Support Services Unit	
Unit Head*	
Faculty (5.50)	#82364, #83787, #86704, #82685, #82068, #86757 (0.50FTE)
Educational Specialist, PBB, #80778 (B)	
Secretary II, SR14, #22313	
Clerk Steno II, SR09, #34661	
Clerk-Typist II, SR08, #22310, #26658, #47612 (0.50 FTE), #47900 (0.50 FTE), #84370 (0.50 FTE) *	

APPROVED/DISAPPROVED:

  
CHANCELLOR, KAPIOLANI COMMUNITY COLLEGE/DATE 10/29/13

\*Chairperson is appointed from among the faculty positions

\*Unit Head is named from among the Chairpersons

\*Temporary Position

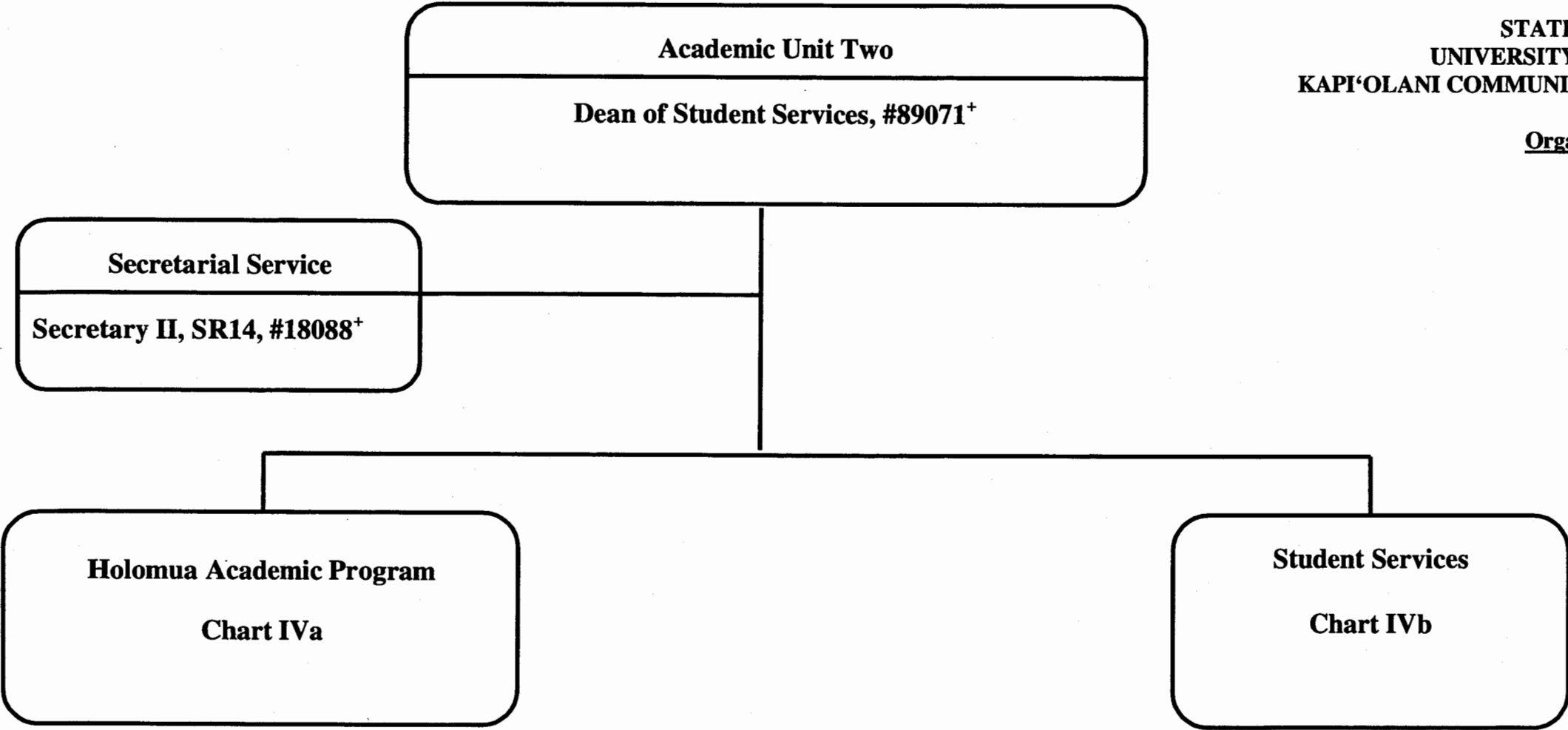
+To be redescribed & submitted for classification review

General Fund  
(B) Special Funds

Perm  
100.00  
1.00

Temp  
9.00

Chart IV



<sup>+</sup>To be redescribed & submitted for classification review

General Fund

Perm  
2.00

Temp

CHART UPDATED  
DATE JUL - 1 2003

### Holomua Academic Program

#### Chairperson<sup>%</sup>

#### Faculty (7.00)

Full-time: #82380, #82874, #83538, #83870, #84072, #86603, #87648

Approximately 16.00 FTE faculty will be assigned in whole or part from the Arts & Sciences Academic Program on an annual basis

Secretary II, SR14, #14214

Clerk-Typist II, SR08, #50007\*

STATE OF HAWAII  
UNIVERSITY OF HAWAII  
KAPI'OLANI COMMUNITY COLLEGE

#### Organization Chart

Chart IVa

\*Temporary Position

%Chairperson is appointed from among the faculty positions

General Fund

Perm  
8.00

Temp  
1.00

CHART UPDATED

DATE JUL - 1 2003

STATE OF HAWAII  
UNIVERSITY OF HAWAII  
KAPI'OLANI COMMUNITY COLLEGE

Organization Chart

Chart IVb

**Student Services**

**Faculty (2.50)**

#83453 (0.50 FTE), #87649, #83387

**Special Services Unit Head\***

Clerk-Steno II, SR09, #27004\*

Educational Specialist, PBA, #81761\*

Student Services Specialist, PBA, #96660F\*\* (0.50 FTE)

**Kekaulike Information and Service Center**

**Student Services Specialist, PBB, #81615\***

Student Services Specialist, PBB, #80257\*

Clerk-Typist II, SR08, #11485\*, #18086\*, #44254\*, #50010\*, #54813\*, #900011\*\*

Student Services Specialist, PBB, #83216\*

Student Services Specialist, PBB, #77331 (B)\*

Clerk-Typist III, SR10, #09169\*, #22315\*

Clerk-Typist II, SR08, #41320(B)\*, #44160\*, #900010\*\*

Student Services Specialist, PBB, #81547\*

Student Services Specialist, PBB, #81878\*

Student Services Specialist, PBA, #81887\*

Clerk-Typist III, SR10, #34675\*

Instructor (Counselor), #83329\*

APPROVED/DISAPPROVED:

14/22/23  
CHANCELLOR, KAPIOLANI COMMUNITY COLLEGE/DATE

\*Temporary Position

\*Unit head is appointed from among the faculty positions

\*To be redescribed & submitted for classification review

General Fund  
(B) Special Fund

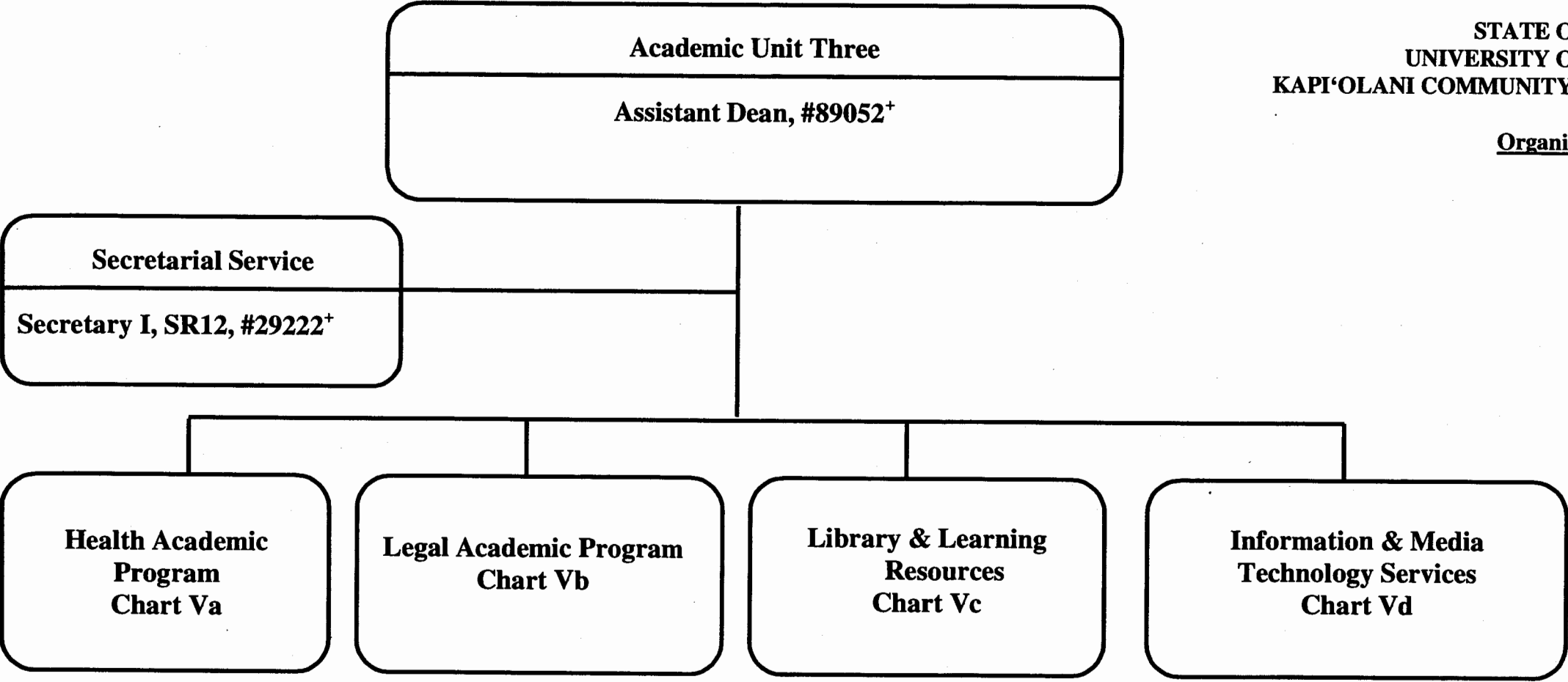
Perm  
19.50  
2.00

Temp  
3.50

STATE OF HAWAI'I  
UNIVERSITY OF HAWAI'I  
KAPI'OLANI COMMUNITY COLLEGE

Organization Chart

Chart V



\*To be redescribed & submitted for classification review

General Fund

Perm  
2.00

Temp

CHART UPDATED

DATE JUL - 1 2003



## Health Academic Program

### Emergency Medical Services

#### Chairperson %

Secretary II, SR14, #37300

Clerk-Typist II, SR08, #35641, 33868 (0.50 FTE)

Faculty (7.50) primarily Oahu based

Full-time: #86705, #86807, #86808, #87047, #87110, #87440, #84754

Part-time: #88096 (0.25 FTE), #88098 (0.25 FTE)

Faculty (2.00) primarily Hawaii based

Full-time: #84739, #84740

Clerk-Typist II, SR08, #33867<sup>@</sup>

Faculty (1.00) primarily Maui based

Full-time: #85871

Clerk-Typist II, SR08, #33866 (0.50 FTE)

### Health Sciences

#### Chairperson %

Secretary II, SR14, #32952

Clerk-Steno II, SR09, #40964 (0.50 FTE)

Faculty (15.10)

Full-time: #82121, #82162, #82405, #82576, #83310, #83321, #83667, #84223, #84326, #85821, #86384, #86385, #86752, #86882, #86886

Part-time: #87052 (0.10 FTE)

### Nursing

#### Chairperson %

Secretary II, SR14, #18093

Clerk-Typist II, SR08, #42015

Faculty (29.50)

Full-time: #82064, #82244, #82513, #84487, #84629, #84655, #86737, #86738, #86740, #86743, #86746, #86747, #86749, #86750,

#86751, #86774, #86776, #86777, #86778, #86832, #86833, #86834, #86836, #86837, #86838, #86839, #86840

Part-time: #84308 (.50 FTE), #86736 (.50 FTE), #86739 (.50 FTE), #88072 (.50 FTE), #88074 (.50 FTE)

### Support Services

Faculty (1.00), #87612T\*

Educational Specialist, PBB, #77025(B)

STATE OF HAWAII  
UNIVERSITY OF HAWAII  
KAPI'OLANI COMMUNITY COLLEGE

### Organization Chart

Chart Va

\*Temporary Position

% Chairperson is appointed from among the faculty positions

@ Supervised by one of the faculty positions

General Fund  
(B) Special Funds

Perm  
62.60  
1.00

Temp  
1.00

CHART UPDATED

DATE JUL - 1 2003

Legal Academic Program
Chairperson <sup>%</sup> Secretary II, SR14, #18092 Faculty (2.50) Full-time: #83071, #83360 Part-time: #83453 (0.50 FTE)

STATE OF HAWAI'I  
UNIVERSITY OF HAWAI'I  
KAPI'OLANI COMMUNITY COLLEGE

Organization Chart

Chart Vb

<sup>%</sup>Chairperson is appointed from among the faculty positions

General Fund

Perm  
3.50

Temp

CHART UPDATED  
DATE JUL - 1 2003

STATE OF HAWAI'I  
UNIVERSITY OF HAWAI'I  
KAPI'OLANI COMMUNITY COLLEGE

Organization Chart

Chart Vc

Library & Learning Resources	
Head Librarian*	
Secretary I, SR12, #44249	
Faculty (6.00)	
#83504, #84185, #84438, #86629, #86724, #88040	
Library Technician V, SR 11, #39859 <sup>@+</sup>	
Library Assistant IV, SR09, #22311 <sup>@+</sup> , #26762 <sup>@+</sup>	
Library Technician V, SR 11, #18087 <sup>@+</sup>	
Library Assistant IV, SR09, #43605	
Library Assistant III, SR07, #42087	
Educational Specialist, PBB, #80748	
Educational Specialist, PBA, #80351 <sup>+</sup>	
Educational & Academic Support Specialist, PBA, #81565, #81557, #80914T*	
Electronic Technician, PBA, #81260	

\*Temporary position

\*Head Librarian is appointed from among the faculty positions

<sup>@</sup>Supervised by one of the faculty positions

\*To be redescribed & submitted for classification review

General Fund

Perm  
18.00

Temp  
1.00

CHART UPDATED

DATE JUL - 1 2003

STATE OF HAWAII  
UNIVERSITY OF HAWAII  
KAPI'OLANI COMMUNITY COLLEGE

Organization Chart

Chart Vd

Information & Media Technology Services

Unit Head\*

Faculty (3.00)

#82386, #86711(B), #87603

Information Technology Specialist, PBC, #81069

Clerk III, SR08, #54823, #54825

Information Technology Specialist, PBC, #81384

Information Technology Specialist, PBB, #80529, #80340, #81627

Information Technology Specialist, PBA, #81220T\*

Information Technology Specialist, PBB, #81654

Electronic Technician, PBB, #80034

Electronic Technician, PBA, #81277

Audio Visual Technician I, BC07, #47350 (0.50 FTE)

Media Specialist, PBB, #80694

Graphic Artist, PBB, #81060

Offset Press Operator III, BC09, #39797

Offset Press Operator II, BC08, #47346 (0.50 FTE)

Clerk-Steno III, SR11, #21321

Clerk-Typist II, SR08, #42014\*, #48451

\*Temporary position

#Unit Head is appointed from among the faculty positions

General Fund  
Special Fund

Perm  
18.00  
1.00

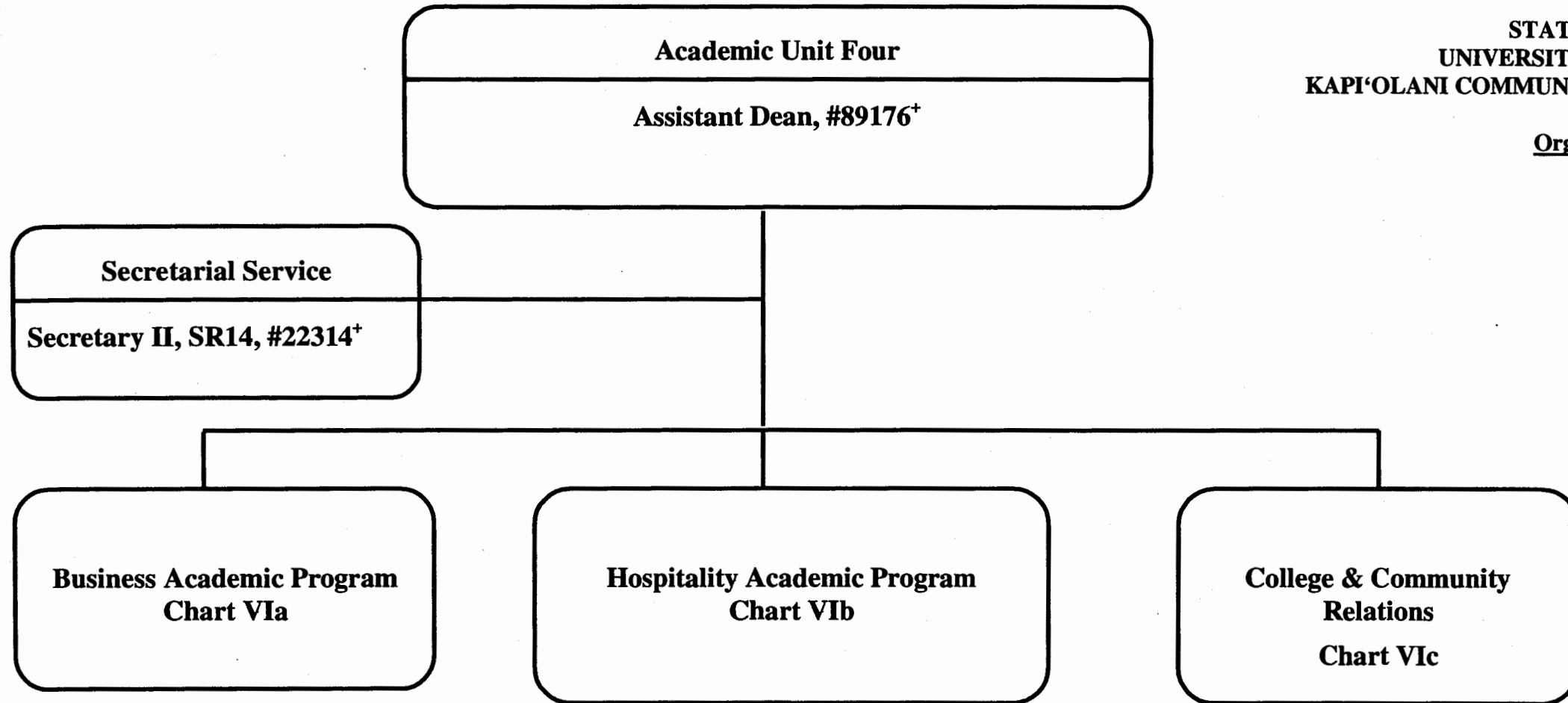
Temp  
2.00

CHART UPDATED  
DATE JUL - 1 2003

STATE OF HAWAII  
UNIVERSITY OF HAWAII  
KAPI'OLANI COMMUNITY COLLEGE

Organization Chart

Chart VI



\*To be redescribed & submitted for classification review

General Fund

Perm  
2.00

Temp

CHART UPDATED  
JUL - 1 2003  
DATE \_\_\_\_\_

Business Academic Program
<p>Chairperson*</p> <p>Secretary II, SR14, #22312</p> <p>Faculty (22.00)</p> <p>Full-time: #82026, #82066, #82218, #82348, #82389, #82503, #82728, #82795, #82931, #83221, #83734, #83771, #84150, #84337, #84369, #86591, #86598, #86702(B)<sup>+</sup>, #86758, #86944(B), #87123, #87144T*</p> <p>Educational Specialist, PBA, #81429(B)<sup>+</sup>, #81923(B)</p>

STATE OF HAWAI'I  
UNIVERSITY OF HAWAI'I  
KAPI'OLANI COMMUNITY COLLEGE

Organization Chart

Chart VIa

\*Temporary Position

%Chairperson is appointed from among the faculty positions

+ To be redescribed & submitted for classification review

General Fund  
(B) Special Funds

Perm  
20.00  
4.00

Temp  
1.00

CHART UPDATED

DATE JUL - 1 2003

STATE OF HAWAII  
UNIVERSITY OF HAWAII  
KAPI'OLANI COMMUNITY COLLEGE

Organization Chart

Chart VIb

**Hospitality Academic Program**

**Culinary Institute of the Pacific**

**Program Director, #89029<sup>+</sup>**

**Chairperson<sup>%</sup>**

**Faculty (12.00)**

**Full-time: #82683, #82970, #83225, #83460, #83901, #84091, #84103, #84304, #84539, #86597, #86670, #86719**

**Secretary II, SR14, #16962**

**Cook III, WS 08, #22318 (B), #32863 (B)**

**Clerk III, SR08, #22319 (B)**

**Educational & Academic Support Specialist, PBA, #81304 (B), #81420 (B), #81422 (B)**

**Hospitality**

**Chairperson<sup>%</sup>**

**Faculty (5.00)**

**Full-time: #82467, #83133, #83684, #86742, #86715**

**Secretary II, SR 14, #44592<sup>+</sup>**

**Support Services**

**Faculty (2.00)**

**#86741**

**#86706(B)**

**Educational Specialist, PBA, #80617(B)**

<sup>%</sup>Chairperson is appointed from among the faculty positions

<sup>+</sup>To be redescribed & submitted for classification review

General Fund  
(B) Special Funds

Perm  
21.00  
8.00

Temp

CHART UPDATED

DATE JUL - 1 2003

STATE OF HAWAII  
UNIVERSITY OF HAWAII  
KAPI'OLANI COMMUNITY COLLEGE

Organization Chart

Chart VIc

College & Community Relations
Student Services Specialist, PBB, #80082 (B) Clerk-Steno III, SR11, #35948 (B) + Clerk-Typist II, SR08, #27015+, #54811+ Faculty (2.00) #86701(B) +, #86794(B) +

\*Temporary Position

\*To be redescribed & submitted for classification review

General Fund  
(B) Special Funds

Perm  
2.00  
4.00

APPROVED/DISAPPROVED:

 10/27/03  
CHANCELLOR, KAPIOLANI COMMUNITY COLLEGE/DAT

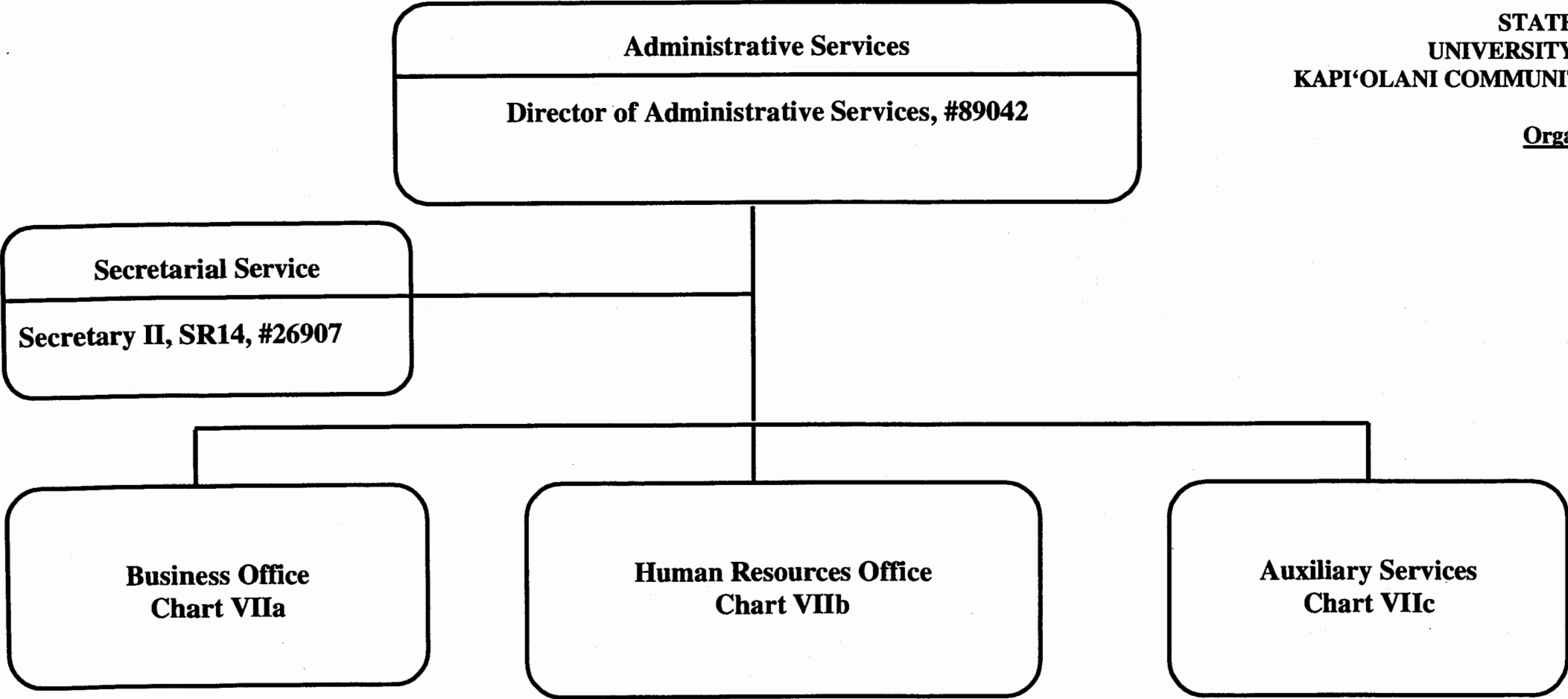
Temp



STATE OF HAWAI'I  
UNIVERSITY OF HAWAI'I  
KAPI'OLANI COMMUNITY COLLEGE

Organization Chart

Chart VII



General Fund

Perm  
2.00

Temp

CHART UPDATED  
DATE JUL - 1 2003

Business Office
Administrative Officer, PBB, #80175 Administrative Officer, PBB, #80865 Administrative Officer, PBB, #80850+ Account Clerk III, SR11, #39769, #110451 Account Clerk II, SR08, #51356 Account Clerk IV, SR13, #15352+ Secretary II, SR11, #13483+ Clerk Typist II, SR08, #50033* Clerk Typist IV, SR10, #96156F* Administrative & Fiscal Support Specialist, PBA, #80799 Cashier Clerk, SR08, #110433+, #50051*+ Clerk III, SR08, #900106+ Clerk Typist II, SR08, #88083+ \$(.40 FTE)

STATE OF HAWAII

UNIVERSITY OF HAWAII

KAPI'OLANI COMMUNITY COLLEGE

Organization Chart

Chart VIIa

\*Temporary Position

+To be redescribed & submitted for classification review

\$Proposed Position Classification

General Fund	<u>Perm</u>	<u>Temp</u>
	11.40	3.00

**Human Resources Office**

**Personnel Officer, PBB, #80874**  
**Personnel Officer, PBA, #80551**  
**Personnel Clerk V, SR13, #26659**  
**Account Clerk III, SR11, #41358 (B) \***

**STATE OF HAWAI'I**  
**UNIVERSITY OF HAWAI'I**  
**KAPI'OLANI COMMUNITY COLLEGE**

**Organization Chart**

**Chart VIIb**

**\*To be redescribed & submitted for classification review**

**General Fund**  
**(B) Special Funds**

**Perm**  
**3.00**  
**1.00**

**Temp**

**CHART UPDATED**  
**DATE JUL - 1 2003**

Auxiliary Services
<b>Auxiliary &amp; Facilities Service Officer IV, PBB, #81650</b> <b>Janitor III, WS02, #14428, #18021</b> <b>Janitor II, BC02, #11107, #14427, #16957, #26654, #26655, #26656, #26657, #35889, #35890, #37512, #40279, #40280, #43305, #43306, #46433, #46434, #50014, #50015</b> <b>Groundskeeper II, WS02, #26652</b> <b>Groundskeeper I, BC02, #26651, #26653, #35888, #36455, #43304, #43308</b> <b>Clerk III, SR08, #50060**</b> <b>University Security Officer I, SR14, #31324<sup>+</sup>, #31325<sup>+</sup>, #45730<sup>+</sup></b> <b>Clerk III, SR08, 50086**</b> <b>Building Maintenance Worker II, WS09, #51300<sup>+</sup></b> <b>Building Maintenance Worker I, BC09, #34492, #51358</b> <b>Painter I, BC09, #43307</b> <b>Sprinkler System Repairer, BC05, #50005</b> <b>Air Conditioning Mechanic, BC10, #96160F**</b> <b>Clerk-Typist III, SR10, #22316</b>

STATE OF HAWAII

UNIVERSITY OF HAWAII

KAPI'OLANI COMMUNITY COLLEGE

Organization Chart

Chart VIIc

\*Temporary Position  
\*\*To be redescribed & submitted for classification review

	<u>Perm</u>	<u>Temp</u>
General Fund	37.00	3.00

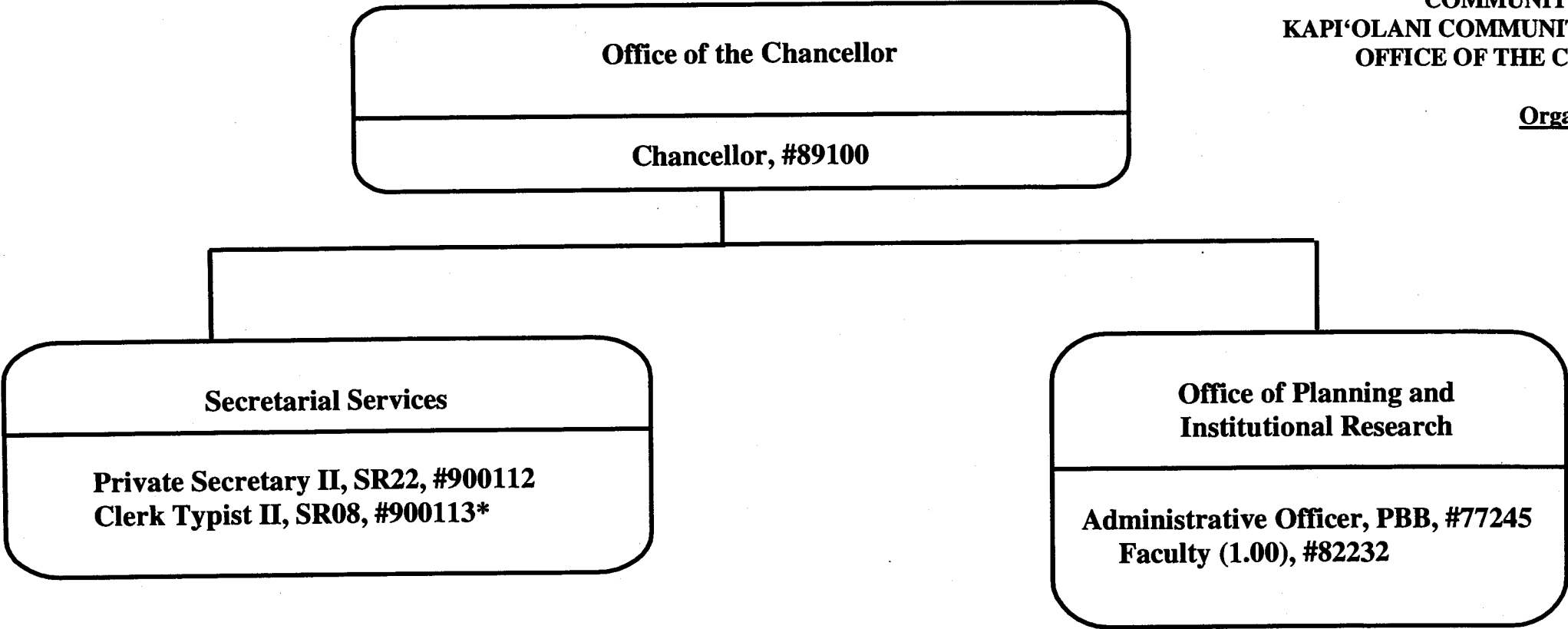
CHART UPDATED

DATE JUL - 1 2003

STATE OF HAWAI'I  
UNIVERSITY OF HAWAI'I  
COMMUNITY COLLEGES  
KAPI'OLANI COMMUNITY COLLEGE  
OFFICE OF THE CHANCELLOR

Organization Chart

Chart II



\*Temporary position

General Fund

Perm  
4.00

Temp  
1.00

**SUPERSEDED**  
Date NOV 21 2003

**CHART UPDATED**  
DATE JUL - 1 2003

STATE OF HAWAI'I  
UNIVERSITY OF HAWAI'I  
KAPI'OLANI COMMUNITY COLLEGE

Organization Chart

Chart IIIa

Arts & Sciences Academic Program	
<b>Humanities</b>	
Chairperson %	
Faculty (24.00)	
Full-time:	#82052, #82429, #82607, #82631, #82803, #82840, #82876, #82925, #82937, #82983, #83094, #83809, #83967, #84470, #84882, #84971, #84974, #86602, #86937, #87402, #87404, #86696T*, 87072T*, #87074T*
	Information Technology Specialist, PBA, #81068T*
<b>Language Arts</b>	
Chairperson %	
Faculty (34.00)	
Full-time:	#82135, #82178, #82231, #82447, #82555, #82653, #82776, #83123, #83308, #83447, #83521, #83559, #83783, #83795, #83810, #83903, #84327, #84409, #84623, #86594, #86595, #86596, #86604, #86798, #86803, #86809, #86945, #86960, #87084T*, #87102, #87120, #87143T*, #87583T*
Part-time:	#82540 (0.50 FTE), #86799 (0.50 FTE)
<b>Mathematics/Science</b>	
Chairperson %	
Faculty (27.00)	
Full-time:	#82031, #82394, #82492, #82910, #82981, #83096, #83262, #83357, #83688, #83733, #83939, #83974, #84458, #84836, #86592, #86593, #86600, #86606, #86718, #86754, #86827, #86830, #86845, #86959, #87401, #86947T*, #88032T*
	Educational Specialist, PBB, #81246
<b>Social Sciences</b>	
Chairperson %	
Faculty (11.00)	
Full-time:	#82152, #82706, #82935, #83492, #83560, #83642, #84972, #84973, #86599, #86938, #87403
<b>Support Services Unit</b>	
Unit Head*	
Faculty (5.50)	#82364, #83787, #86704, #82685, #82068, #86757 (0.50FTE)
	Educational Specialist, PBB, #80778 (B)
	Secretary II, SR14, #22313
	Clerk Steno II, SR09, #34661
	Clerk-Typist II, SR08, #11485, #22310, #26658, #47612 (0.50 FTE), #47900 (0.50 FTE), #84370 (.50 FTE)*

**SUPERSEDED**

Date OCT 29 2003

\*Chairperson is appointed from among the faculty positions

\*Unit Head is named from among the Chairpersons

\*Temporary Position

+To be redescribed & submitted for classification review

General Fund  
(B) Special Funds

Perm  
101.00  
1.00

Temp  
9.00

**CHART UPDATED**

DATE JUL - 1 2003

STATE OF HAWAI'I  
UNIVERSITY OF HAWAI'I  
KAPI'OLANI COMMUNITY COLLEGE

Organization Chart

Chart IVb

**SUPERSEDED**  
Date OCT 29 2003

**Student Services**

**Faculty (3.50)**

#83329, #83453 (0.50 FTE), #87649, #83387

**Special Services Unit Head\***

Clerk-Steno II, SR09, #27004<sup>+</sup>

Educational Specialist, PBA, #81761<sup>+</sup>

Student Services Specialist, PBA, #96660F\*\* (0.50 FTE)

**Enrollment Services Unit Head\***

Student Services Specialist, PBB, #81878<sup>+</sup>

Clerk-Typist III, SR10, #22315

Clerk-Typist II, SR08, #44254

Student Services Specialist, PBB, #81615<sup>+</sup>

Student Services Specialist, PBB, #83216<sup>+</sup>

Clerk-Typist III, SR10, #09169

Clerk-Typist II, SR08, #18086, #44160<sup>+</sup>, #50010\*, #54813, #900010\*<sup>+</sup>

**Student Services Specialist, PBB, #81547<sup>+</sup>**

Student Services Specialist, PBB, #80257

Student Services Specialist, PBA, #81887

Clerk Typist III, SR10, #34675

Clerk-Typist II, SR08, #900011\*

\*Temporary Position

\*Unit head is appointed from among the faculty positions

\*To be redescribed & submitted for classification review

General Fund

Perm  
18.50

Temp  
3.50

CHART UPDATED  
DATE JUL - 1 2003

College & Community Relations
Student Services Specialist, PBB, #80082 (B) Clerk-Steno III, SR11, #35948 (B) + Clerk-Typist II, SR08, #27015+, #41320 (B)+, #54811+ Student Services Specialist, PBB, #77331 (B)+ Faculty (2.00) #86701(B) +, #86794(B) +

STATE OF HAWAI'I  
UNIVERSITY OF HAWAI'I  
KAPI'OLANI COMMUNITY COLLEGE

Organization Chart

Chart VIc

**SUPERSEDED**  
Date OCT 29 2003

\*Temporary Position

+To be redescribed & submitted for classification review

General Fund  
(B) Special Funds

Perm  
2.00  
6.00

Temp

CHART UPDATED  
DATE JUL - 1 2003