

STATE OF HAWAII
UNIVERSITY OF HAWAII
MAUI COMMUNITY COLLEGE

Organization Chart

Chart I

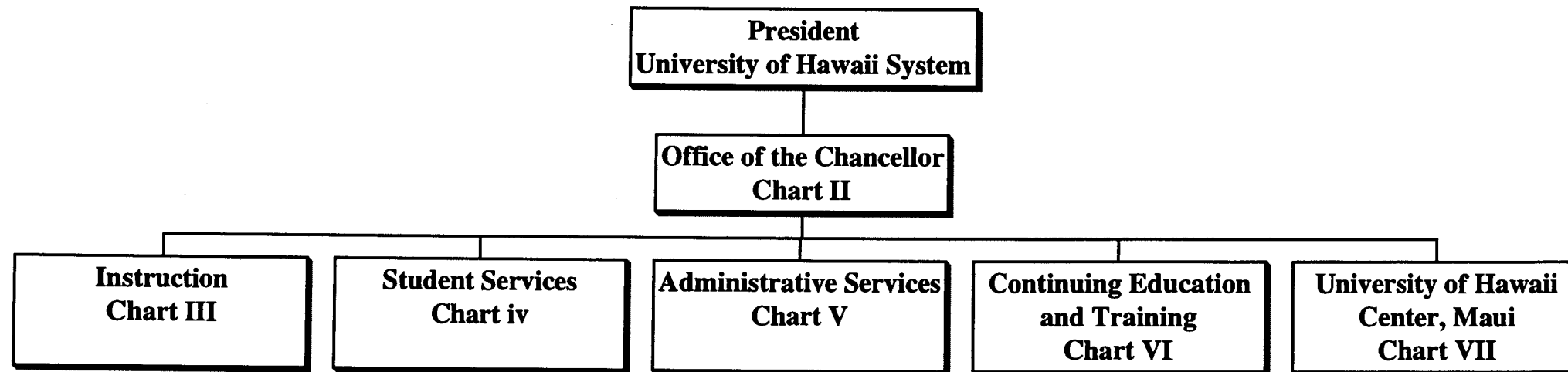


CHART UPDATED
DATE JUL - 1 2003

	<u>Perm</u>	<u>Temp</u>
General Fund	168.00	3.00
(B) Special Funds	7.50	
(W) Revolving Funds	2.00	

**STATE OF HAWAII
UNIVERSITY OF HAWAII
MAUI COMMUNITY COLLEGE
OFFICE OF THE CHANCELLOR**

Organization Chart

Chart II

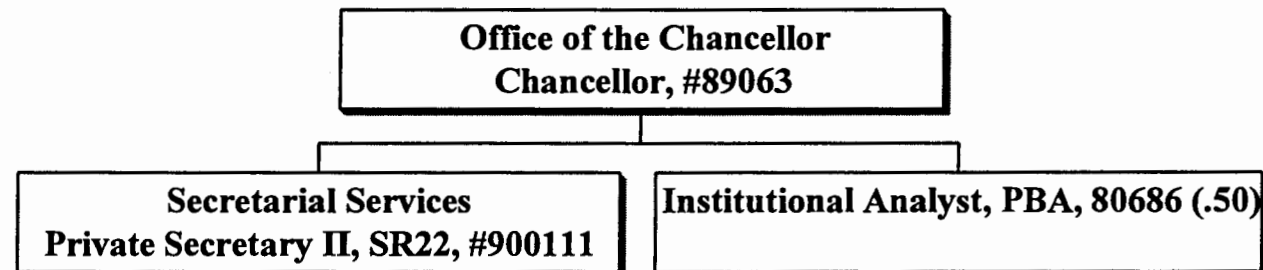


CHART UPDATED
DATE JUL - 1 2003

STATE OF HAWAII
UNIVERSITY OF HAWAII
MAUI COMMUNITY COLLEGE
INSTRUCTION

Position Organization Chart

Chart III

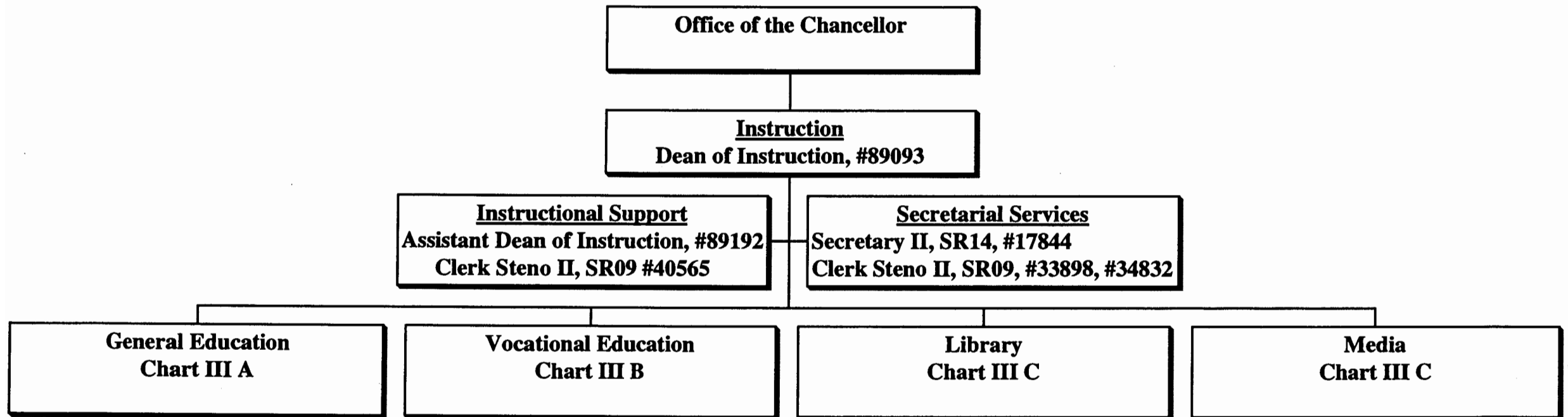


CHART UPDATED
DATE JUL - 1 2003

STATE OF HAWAII
UNIVERSITY OF HAWAII
MAUI COMMUNITY COLLEGE
INSTRUCTION

Position Organization Chart

Chart III A

Instruction

General Education

Math/Science Division

Chairperson**

Faculty (14.50), #82356, #82660, #82754, #83018, #83290, #83632, #83833, #83866, #84011, #84137, #84570, #86073, #86725, #86932, #82666 (.50)

Educational Specialist, PBA, #81658

Educational & Academic Support Specialist, PBA, #81730, #81731

Account Clerk III, SR11, #35751

Language Arts Division

Chairperson**

Faculty (11.00), #82199, #82408, #82636, #82958, #83093, #83898, #84148, #84367, #84482, #84998, #85074

Educational Specialist, PBB, #81214+

Clerk Steno II, SR09, #47721

Social Science/Humanities Division

Chairperson**

Faculty (16.00), #82410, #82665, #82778, #82798, #83206, #83377, #83546, #83613, #83628, #84214, #84312, #84997, #84999, #86887T*, #87088, #86857T* (.50), #86888T* (.50)

Outreach

Faculty (2.00), #86630, #86816

CHART UPDATED

DATE JUL - 1 2003

- * Temporary Position
- ** Chairperson is appointed from among instructional positions within the division
- + Supervised by one of the faculty positions.

	<u>Perm</u>	<u>Temp</u>
General Fund	47.50	2.00

STATE OF HAWAII
UNIVERSITY OF HAWAII
MAUI COMMUNITY COLLEGE
INSTRUCTION

Position Organization Chart

Chart III B

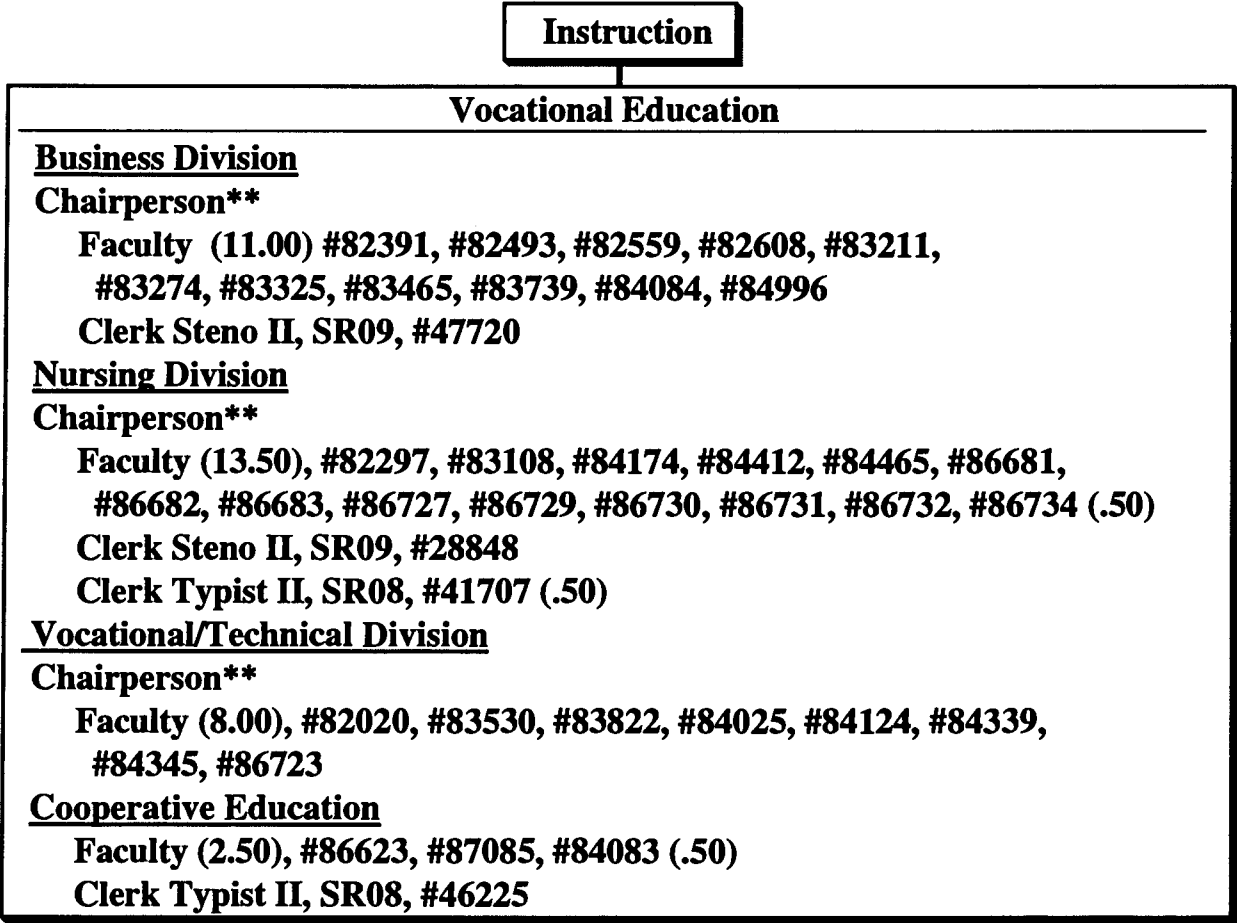


CHART UPDATED

DATE JUL - 1 2003

** Chairperson is appointed from among instrutional positions within the division

STATE OF HAWAII
UNIVERSITY OF HAWAII
MAUI COMMUNITY COLLEGE

INSTRUCTION

Position Organization Chart

Chart III C

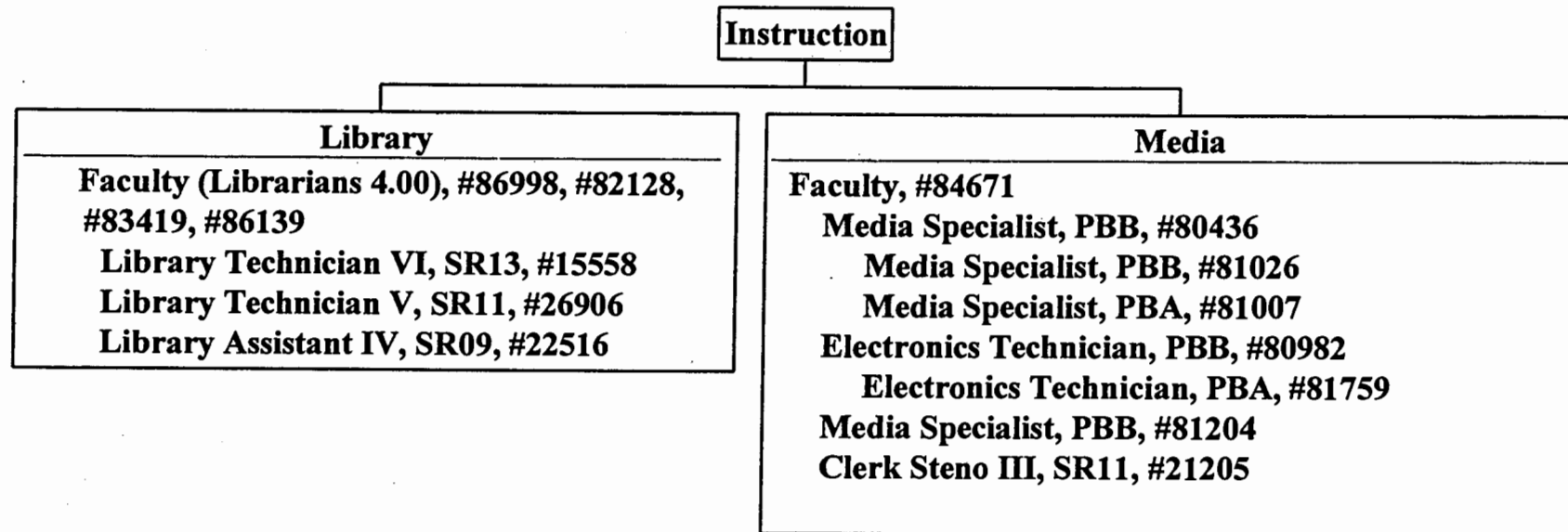


CHART UPDATED

DATE JUL - 1 2003

STATE OF HAWAII
UNIVERSITY OF HAWAII
MAUI COMMUNITY COLLEGE
STUDENT SERVICES

Position Organization Chart

Chart IV

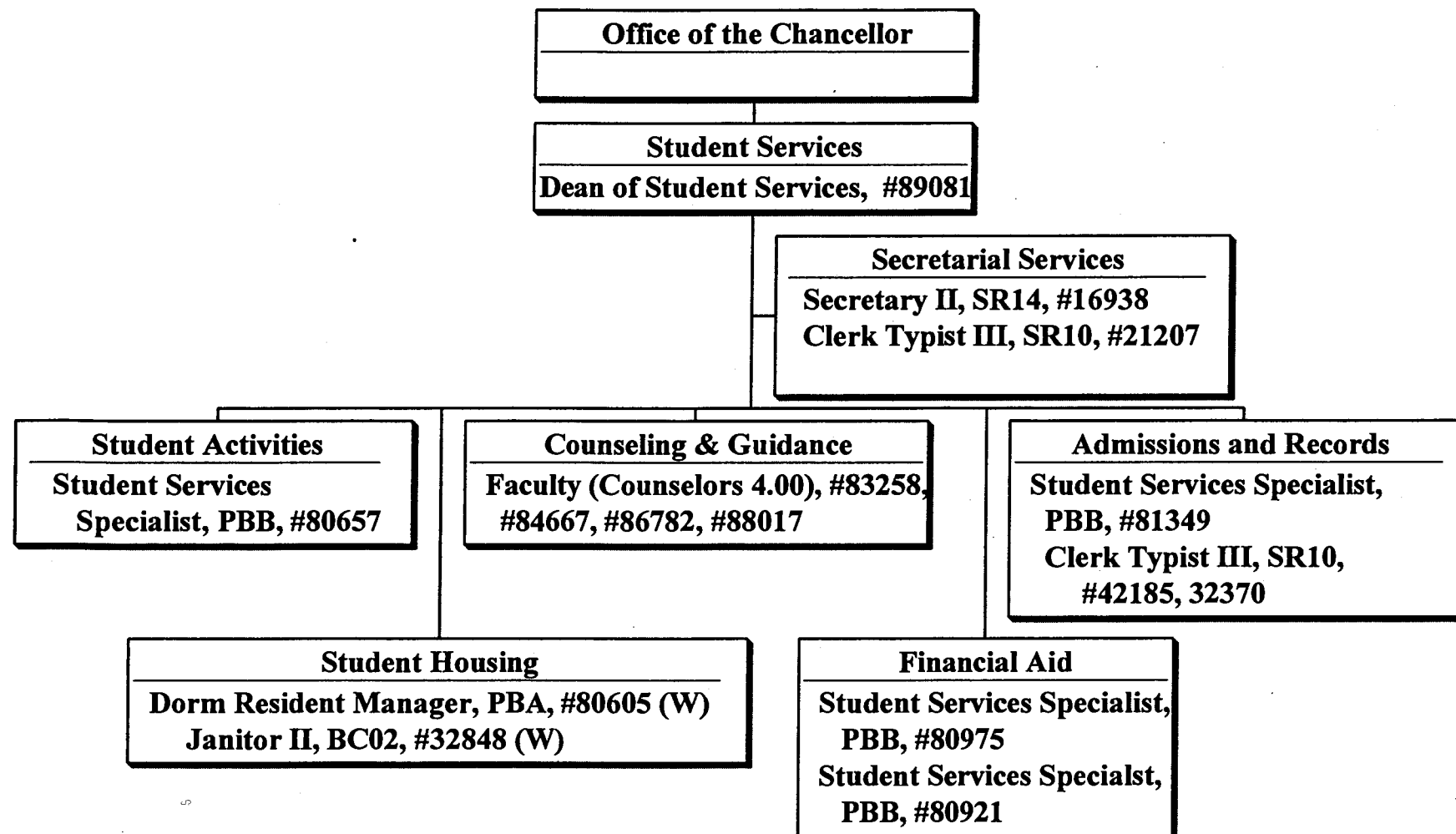


CHART UPDATED
DATE JUL - 1 2003

	<u>Perm</u>
General Fund	13.00
(W) Revolving Funds	2.00

STATE OF HAWAII
UNIVERSITY OF HAWAII
COMMUNITY COLLEGES
MAUI COMMUNITY COLLEGES
ADMINISTRATIVE SERVICES

Position Organizational Chart

Chart V

Office of the Chancellor

ADMINISTRATIVE SERVICES
Director of Administrative Services, #89014

Secretarial Services
Secretary II, SR14, #17845

Business Office
Administrative Officer, PBB, #81000
Administrative Officer, PBA, #81215+
Cashier I, SR10, #41652
Cashier Clerk, SR08, #110674
Account Clerk IV, SR13, #14335
Account Clerk III, SR11, #21204
Account Clerk III, SR11, #27253
Account Clerk II, SR08, #111002S

Computing Services
IT Specialist, PBB, #81381
IT Specialist, PBB, #80154 (.50)
IT Specialist PBA, #80539
IT Specialist PBB, #81212 (.50)
Clerk Steno II, SR09, #41198 (.50)

Cafeteria
Cafeteria Helper BC02,
#09262 (B)

Human Resources
Personnel Officer, PBB, #81116+
Personnel Clerk V, SR13,
#50063
Personnel Clerk III, SR09,
#112083

Operations & Maintenance
Auxiliary & Facilities Services Officer IV, #80356
Building Maintenance Worker I, BC09, #33974+
Building Maintenance Worker I, BC09, #21482, #900035
General Laborer II, BC03, #47553
General Laborer III, WS03, #22514
General Laborer II, BC03, #18006, #33975, #40291, #900050
Janitor III, WS02, #21815
Janitor II, BC02, #14842, #16958, #18007, #21431, #39861,
#43891, #43892, #47572, #51308, #51353

CHART UPDATED
DATE AUG 11 2003

+ To be redescribed and submitted for classification review
S Proposed position classification

General Fund
Special Fund (B)

Perm
37.50
1.00

**STATE OF HAWAII
UNIVERSITY OF HAWAII
MAUI COMMUNITY COLLEGE
CONTINUING EDUCATION AND TRAINING**

Position Organization Chart

Chart VI

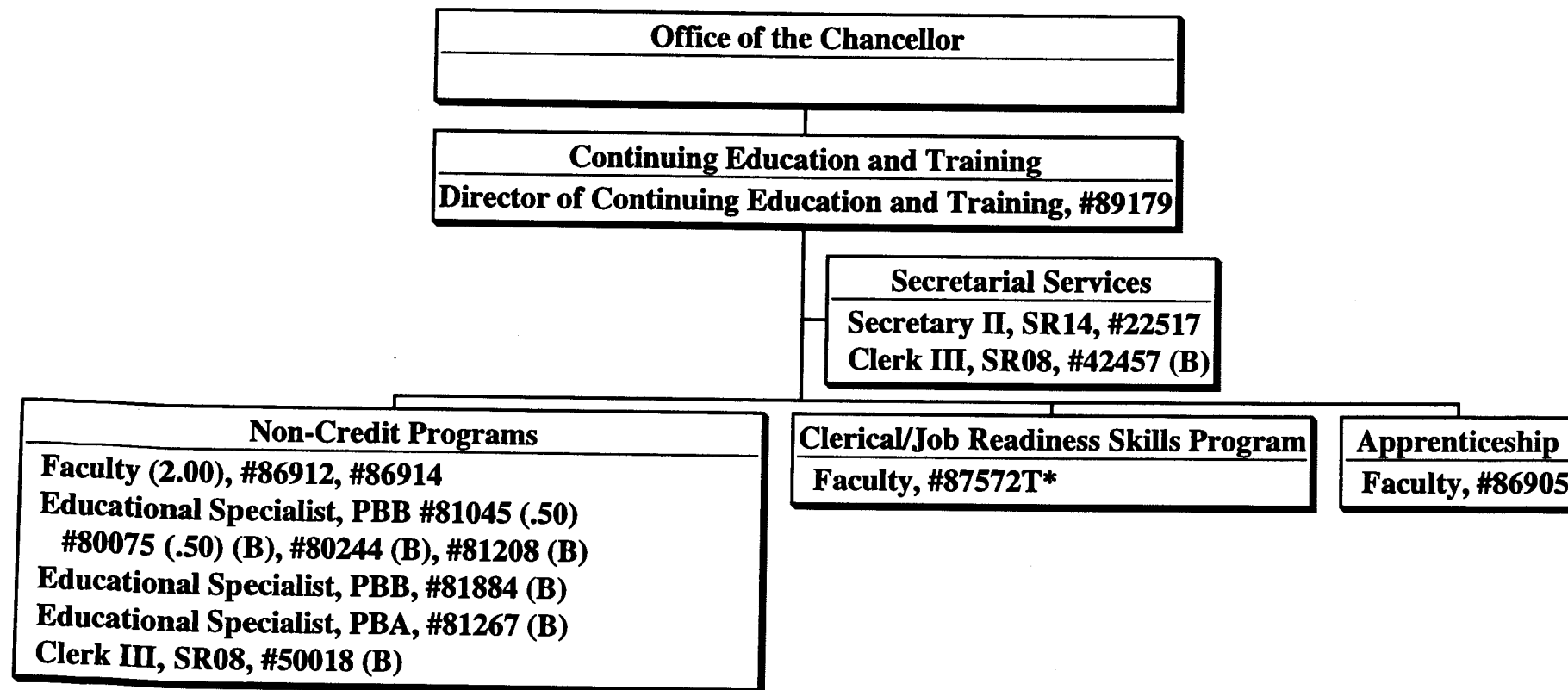


CHART UPDATED
DATE JUL - 1 2003

* Temporary Position

	<u>Perm</u>	<u>Temp</u>
General Funds	5.50	1.00
(B) Special Funds	6.50	

**STATE OF HAWAII
UNIVERSITY OF HAWAII
MAUI COMMUNITY COLLEGE
UNIVERSITY OF HAWAII CENTER, MAUI**

Position Organization Chart

Chart VII

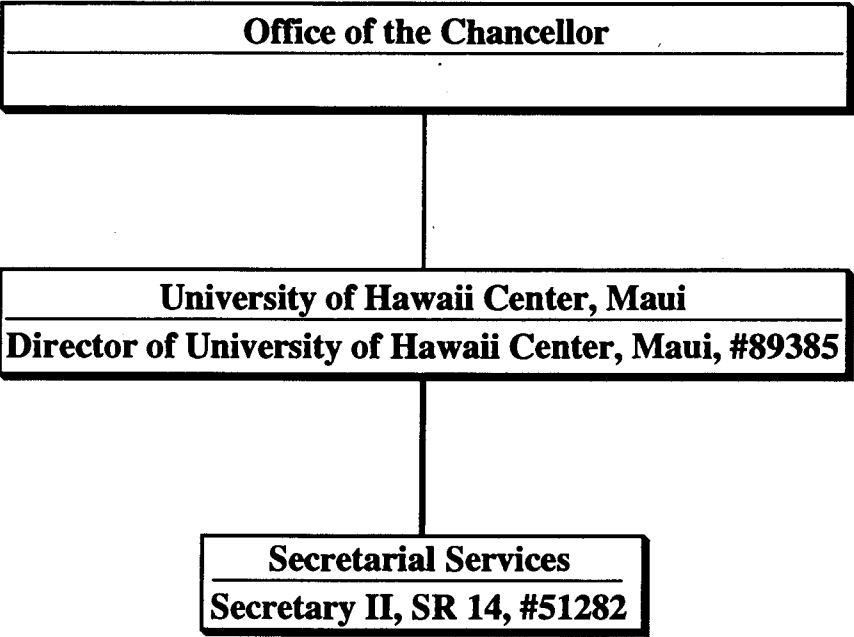


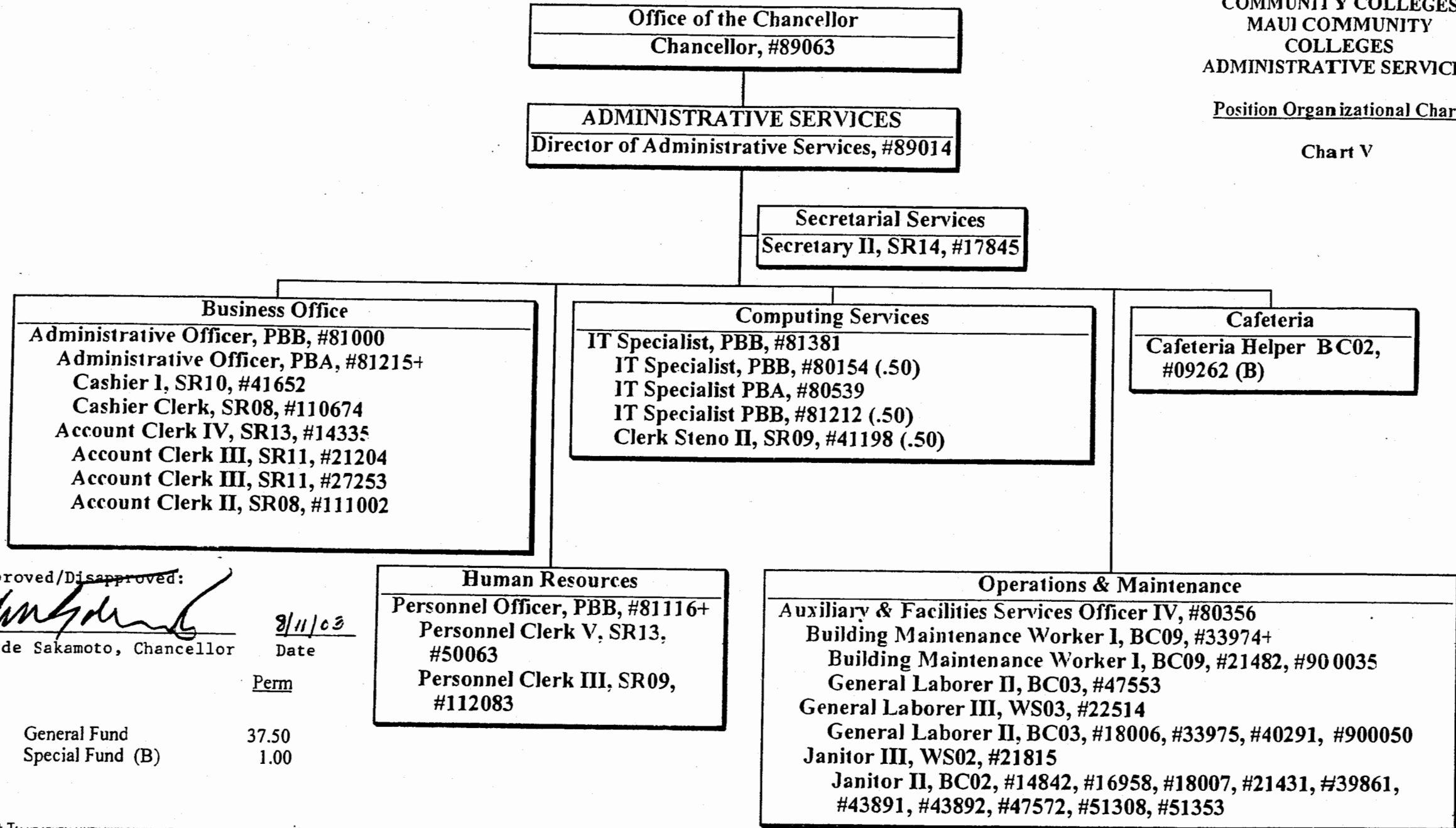
CHART UPDATED
DATE JUL - 1 2003

Proposed Organizational Chart

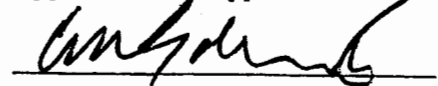
STATE OF HAWAII
UNIVERSITY OF HAWAII
COMMUNITY COLLEGES
MAUI COMMUNITY
COLLEGES
ADMINISTRATIVE SERVICES

Position Organizational Chart

Chart V



Approved/Disapproved:


Clyde Sakamoto, Chancellor

8/11/03
Date

Perm

General Fund 37.50
Special Fund (B) 1.00