

STATE OF HAWAII
UNIVERSITY OF HAWAII
COMMUNITY COLLEGES
WINDWARD COMMUNITY COLLEGE

Organization Chart

Chart I

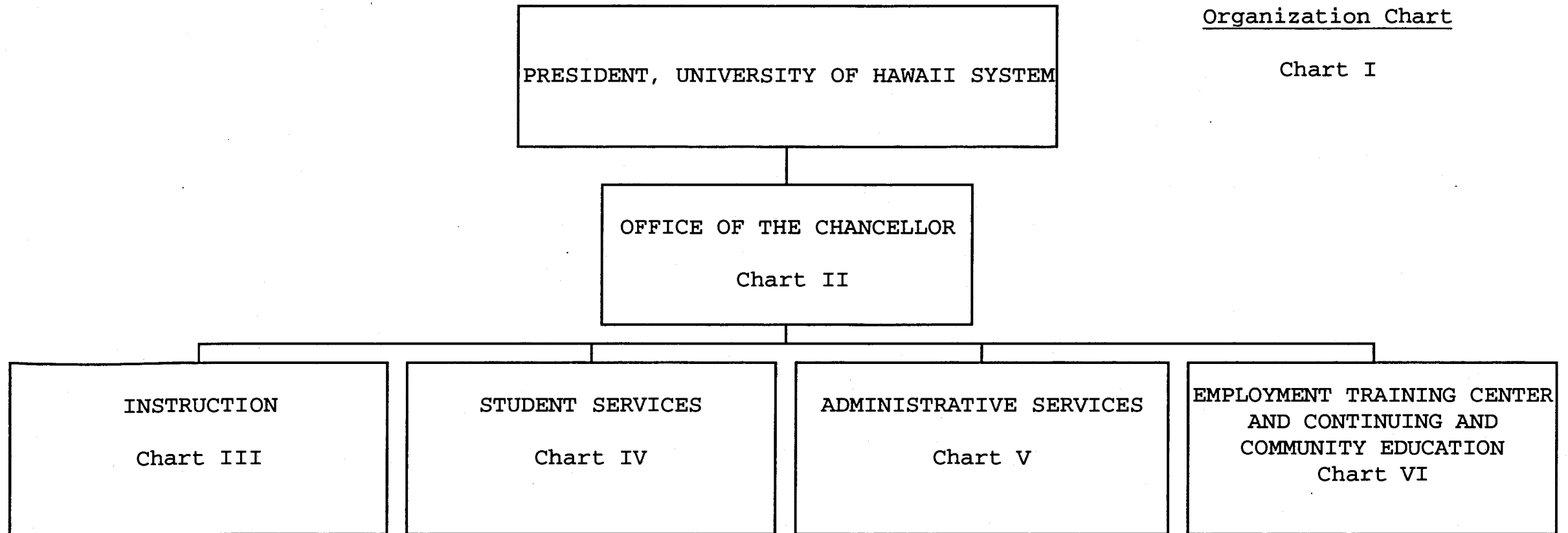


CHART UPDATED

DATE JUL - 1 2003

General Fund
(B) Special Funds

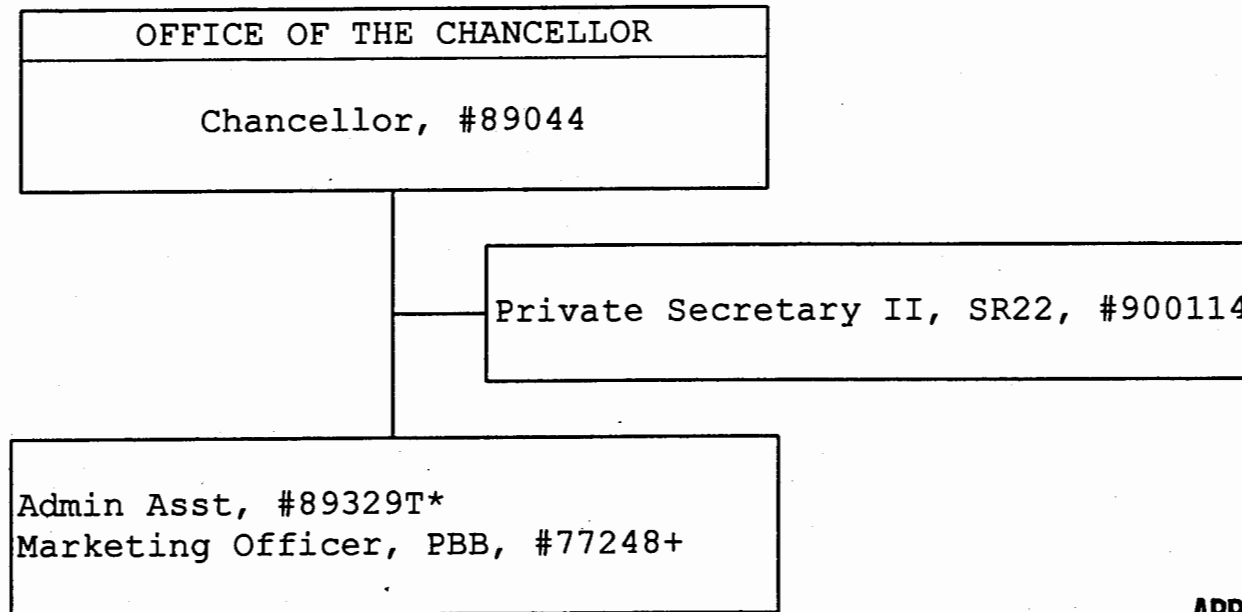
<u>Perm</u>	<u>Temp</u>
118.50	8.00
8.00	0.00

Proposed Organizational Chart

STATE OF HAWAII
UNIVERSITY OF HAWAII
COMMUNITY COLLEGES
WINDWARD COMMUNITY COLLEGE
OFFICE OF THE CHANCELLOR

Position Organization Chart

Chart II



APPROVED BY THE UNIVERSITY
BOARD OF REGENTS
NOV 21 2003

Date

* Temporary Position
+ Position to be redescribed

	<u>Perm</u>	<u>Temp</u>
General Fund	3.00	1.00

STATE OF HAWAII
UNIVERSITY OF HAWAII
COMMUNITY COLLEGES
WINDWARD COMMUNITY COLLEGE
INSTRUCTION

Position Organization Chart

Chart III

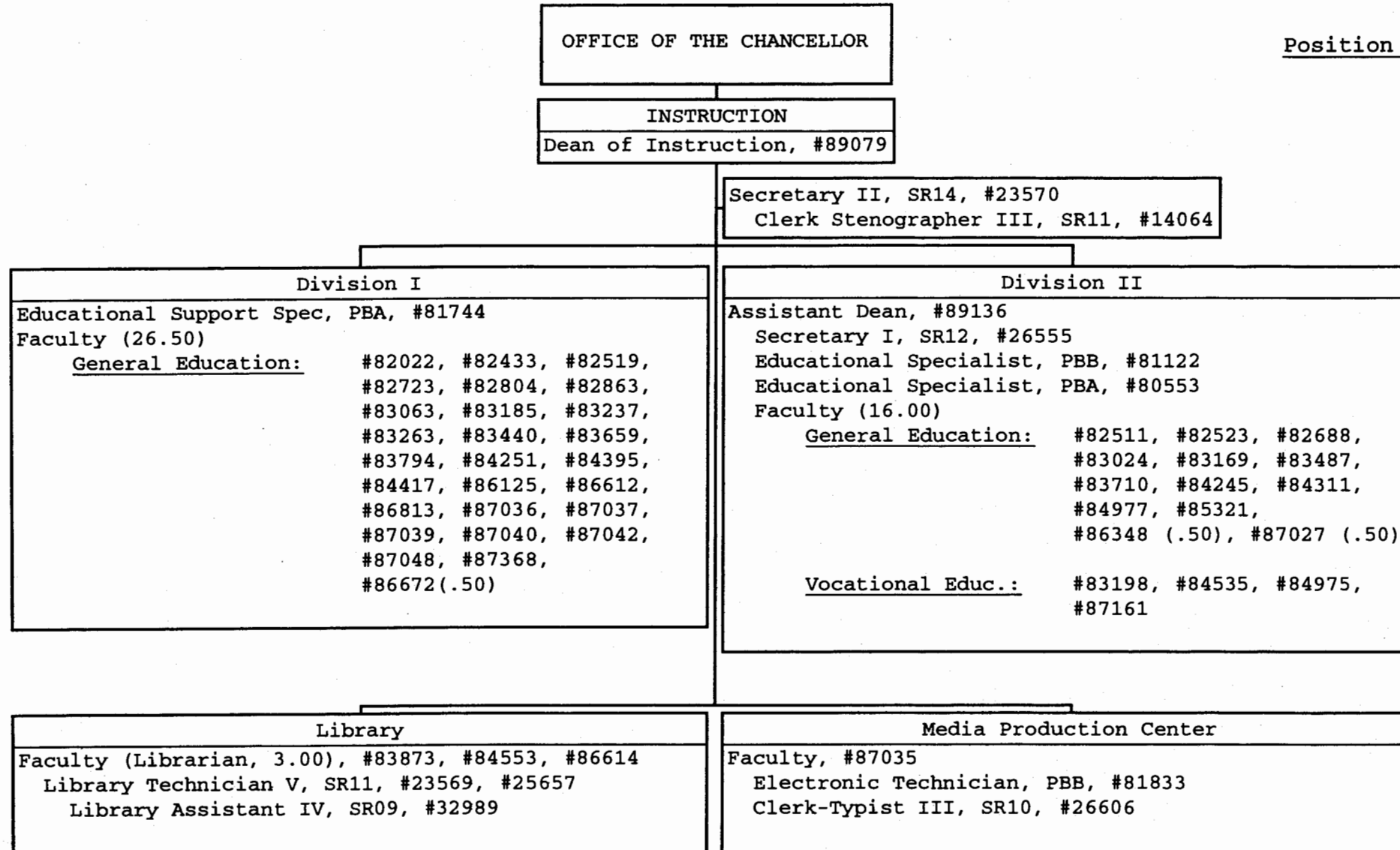


CHART UPDATED
DATE JUL - 1 2003

General Fund Perm
59.50

STATE OF HAWAII
UNIVERSITY OF HAWAII
COMMUNITY COLLEGES
WINDWARD COMMUNITY COLLEGE
STUDENT SERVICES

Position Organization Chart

Chart IV

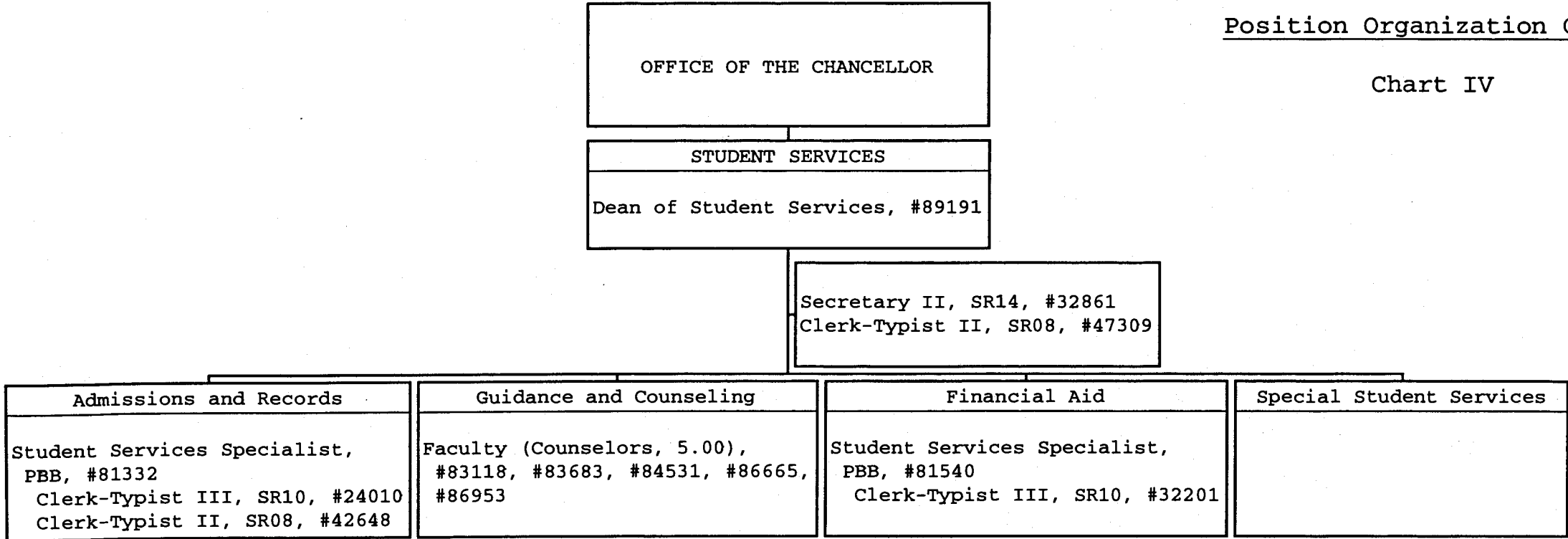


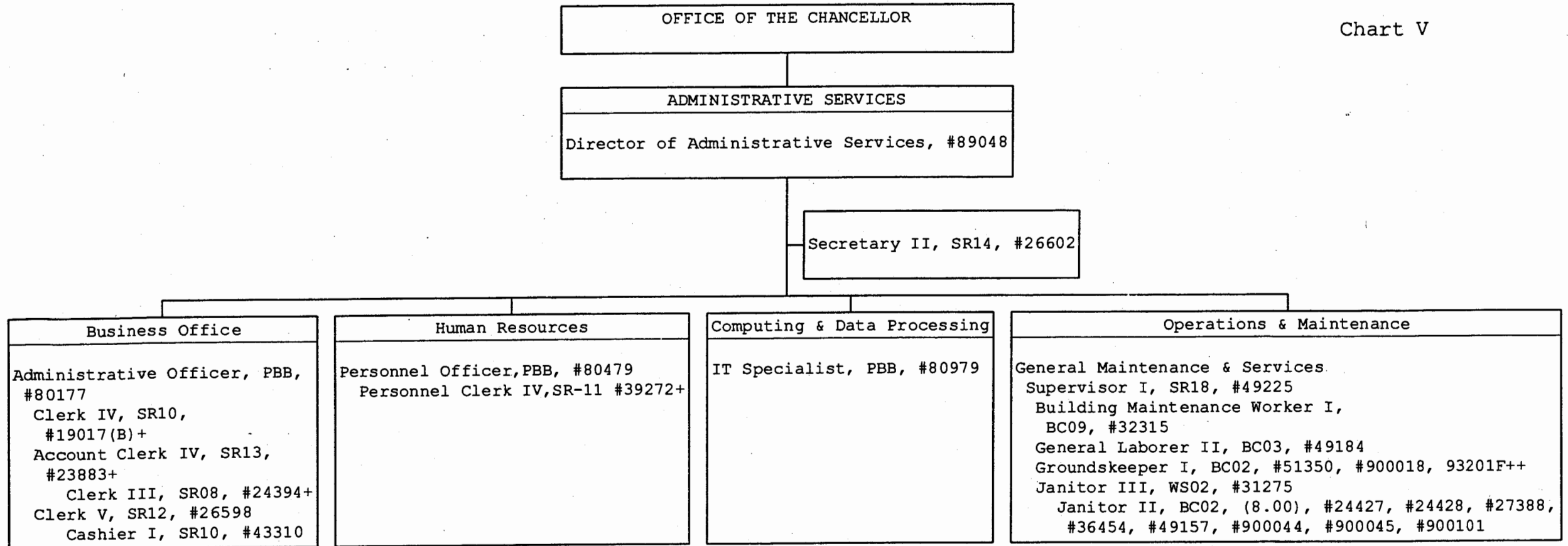
CHART UPDATED
DATE JUL - 1 2003 General Fund Perm 13.00

PROPOSED ORGANIZATIONAL CHART

STATE OF HAWAII
UNIVERSITY OF HAWAII
COMMUNITY COLLEGES
WINDWARD COMMUNITY COLLEGE
ADMINISTRATIVE SERVICES

Position Organization Chart

Chart V



APPROVED BY THE UNIVERSITY
BOARD OF REGENTS
NOV 21 2003

Date

+ Position description to be redescribed
++Positions pending establishment

	General Fund	Perm
	(B) Special Funds	25.00
		1.00

STATE OF HAWAII
UNIVERSITY OF HAWAII
COMMUNITY COLLEGES
WINDWARD COMMUNITY COLLEGE

POSITION ORGANIZATION CHART

CHART VI

OFFICE OF THE CHANCELLOR

EMPLOYMENT TRAINING CENTER AND CONTINUING AND COMMUNITY EDUCATION

Director of Vocational & Community Education, #89177

Secretary II, SR14, #14872+

Director of Continuing Education and Training, #89207+

Secretary II, SR14, #31480+

CHART UPDATED

DATE JUL - 1 2003

Employment Training Center - Instructional Services

Program Coordinators**

Clerk Stenographer II, SR09, #14065***

Clerk Typist II, SR08, #51323(B)***

Educational Assistant I, SR06, #112395* ***

Faculty (17.00)

#82397, #83581, #84619, #84639, #86759,

#86760, #87394, #87395, #87397, #84744(B),

#84745(B), #84746(B), #84747(B), #84757(B),

#86894T*, #86898T*, #86900T*

Employment Training Center - Student Services

Coordinator**

Clerk Typist II, SR08, #35418(B)

Faculty (6.00)

#83817, #87011, #87013, #87396, #86895T*, 86897T*

Student Services Specialist, PBB, #80460

Clerk Typist II, SR08, #44423*

Continuing and
Community Education

Faculty, #84609

- * Temporary
- ** Coordinators appointed from faculty positions within the unit.
- *** Clerical staff report to specific Pgm Coords as reflected in position descriptions.
- + Positions to be redescribed

	<u>Perm</u>	<u>Temp</u>
General Fund	20.00	7.00
(B) Special Funds	7.00	

STATE OF HAWAII
UNIVERSITY OF HAWAII
COMMUNITY COLLEGES
WINDWARD COMMUNITY COLLEGE
OFFICE OF THE CHANCELLOR

Position Organization Chart

Chart II

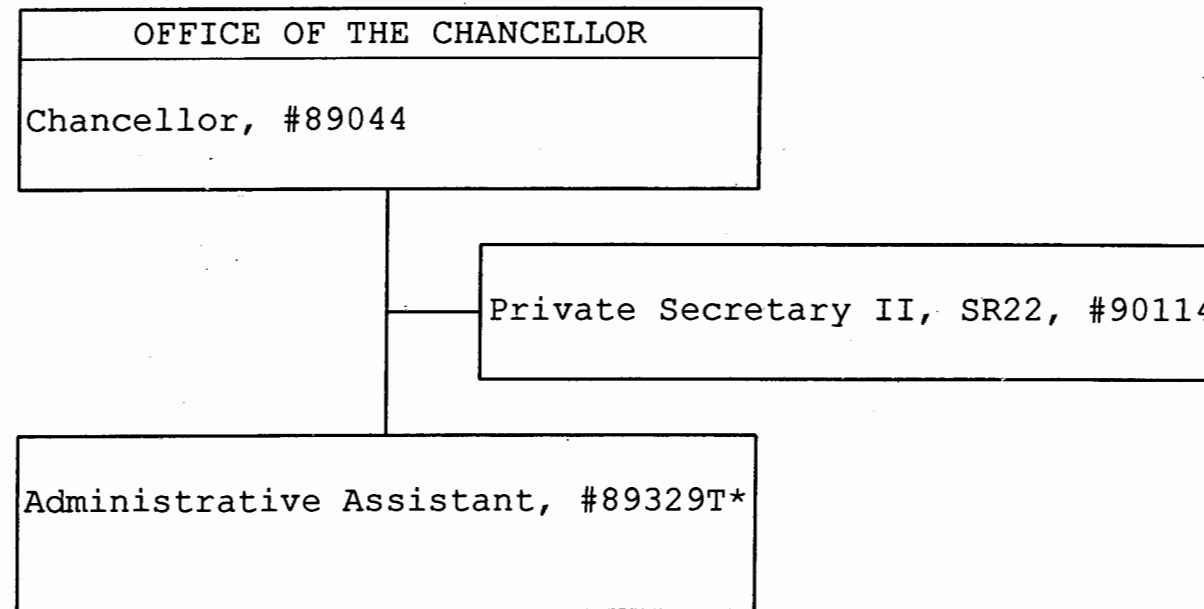


CHART UPDATED
DATE JUL - 1 2003

*Temporary Position

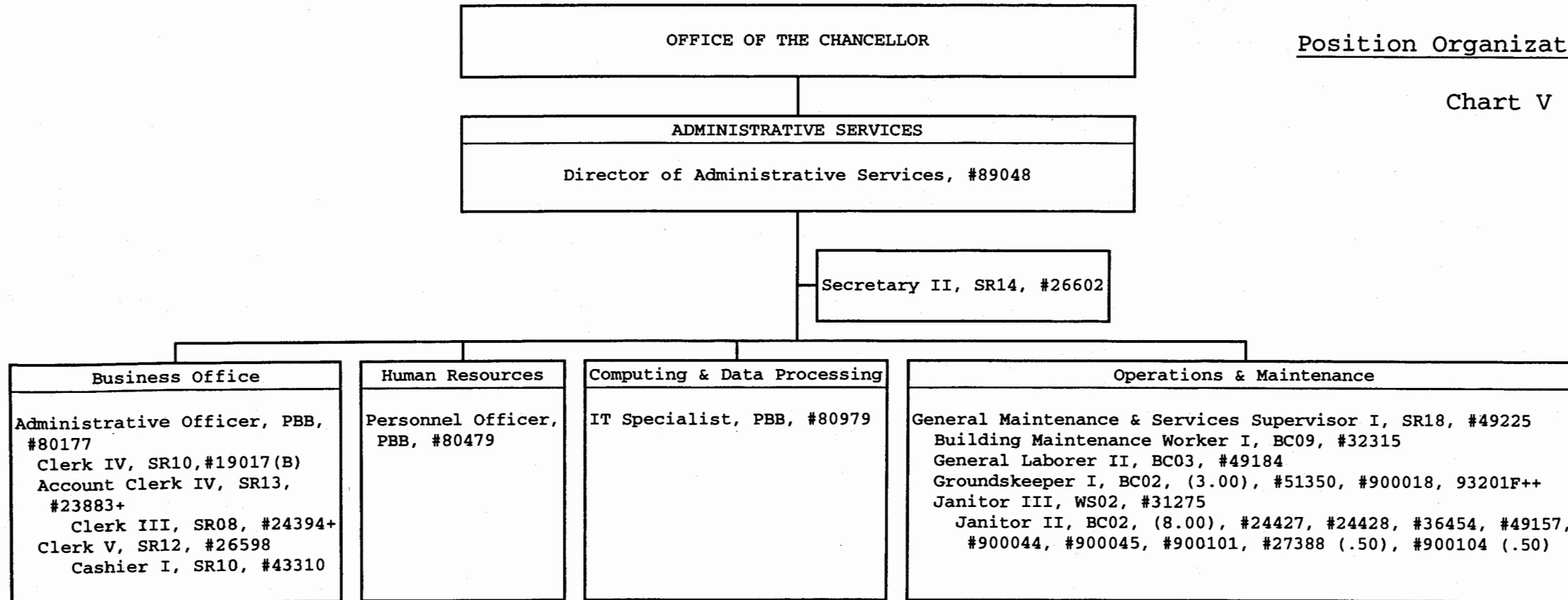
SUPERSEDED
Date NOV 21 2003

	<u>Perm</u>	<u>Temp</u>
General Fund	2.00	1.00

STATE OF HAWAII
UNIVERSITY OF HAWAII
COMMUNITY COLLEGES
WINDWARD COMMUNITY COLLEGE
ADMINISTRATIVE SERVICES

Position Organization Chart

Chart V



+ Position description to be redescribed.
++Positions pending establishment.

SUPERSEDED
Date NOV 21 2003

CHART UPDATED
DATE JUL - 1 2003

	<u>Perm</u>
General Fund	24.00
(B) Special Funds	1.00