

STATE OF HAWAII
UNIVERSITY OF HAWAII
SYSTEMWIDE ADMINISTRATION
OFFICE OF THE VICE PRESIDENT FOR
ACADEMIC AFFAIRS

POSITION ORGANIZATION CHART

Chart A

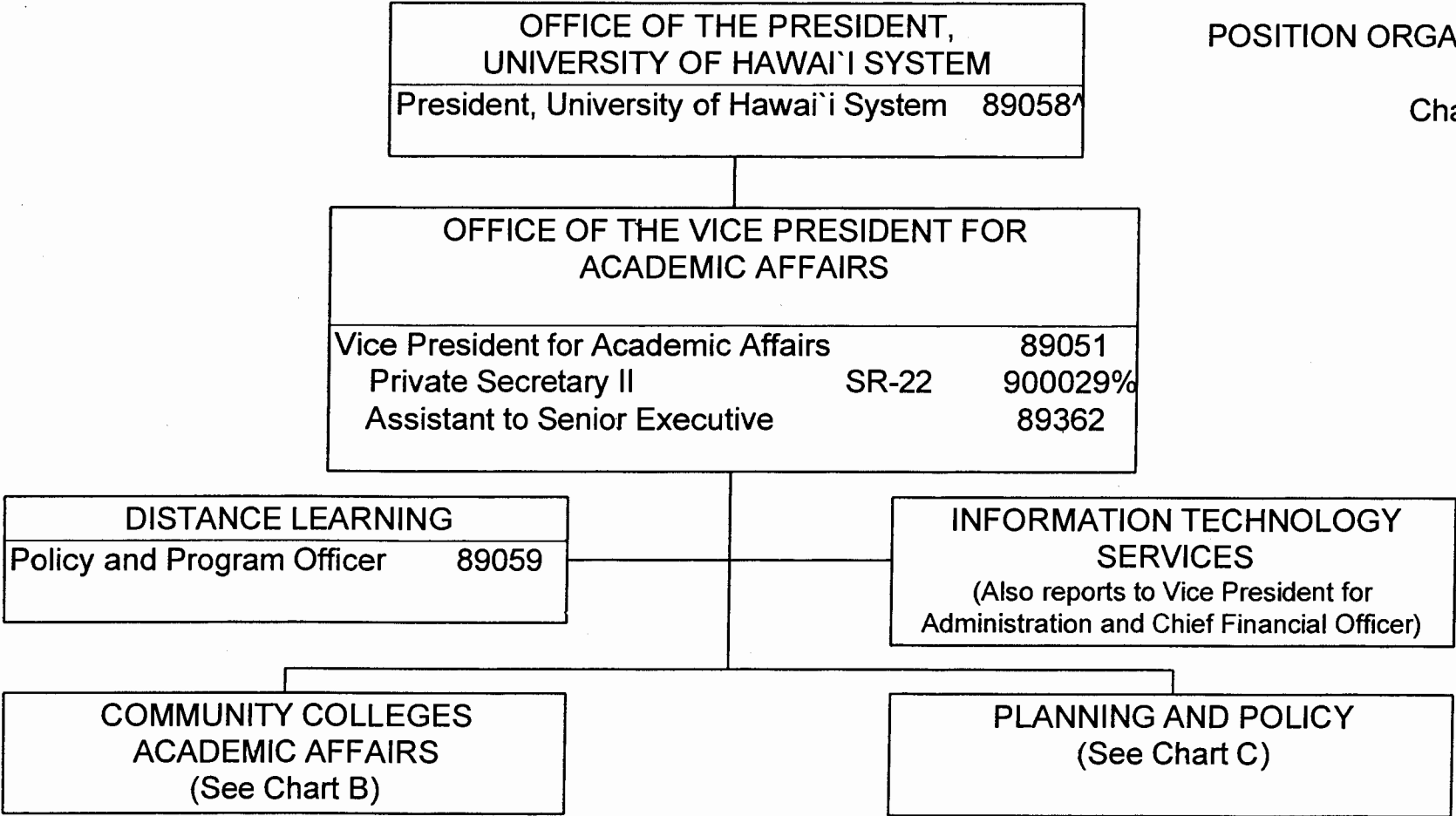


CHART UPDATED

DATE JUL 01 2003

Perm
4.00

General Fund

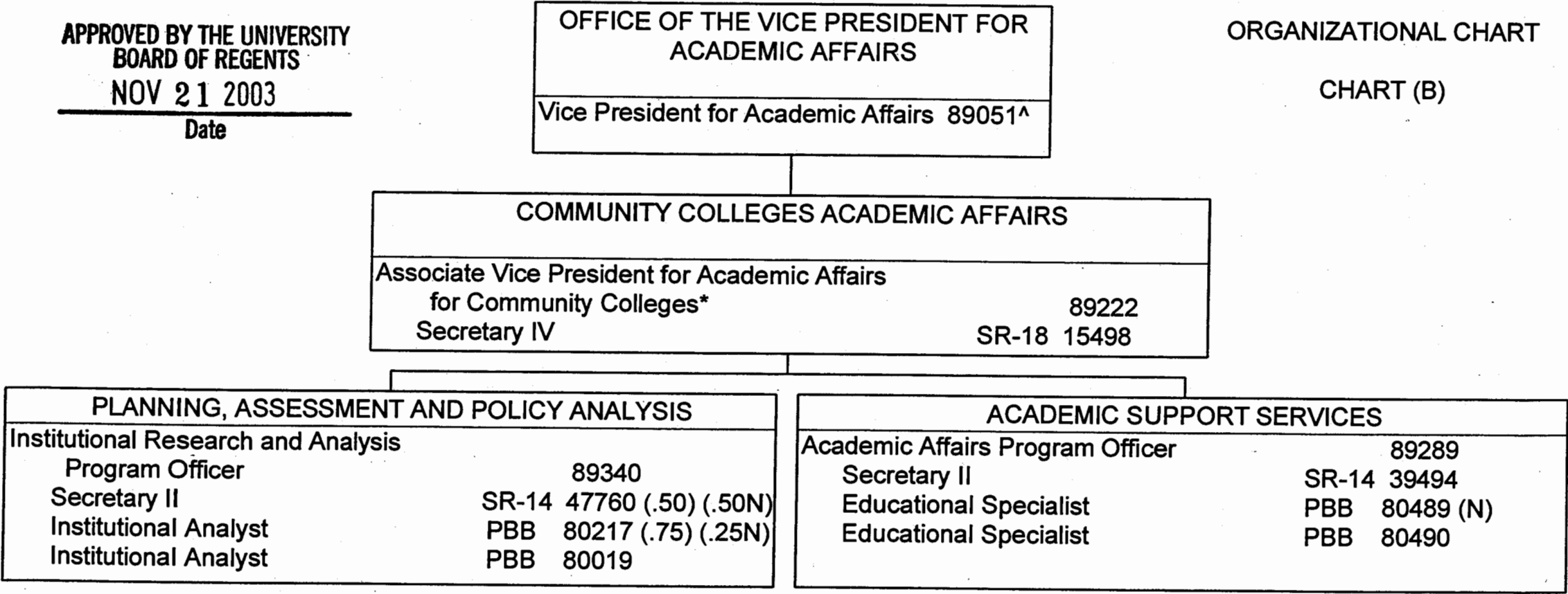
be redescribed
cluded from position count, this chart

STATE OF HAWAII
 UNIVERSITY OF HAWAII
 SYSTEMWIDE ADMINISTRATION
 OFFICE OF THE VICE PRESIDENT FOR
 ACADEMIC AFFAIRS
 COMMUNITY COLLEGES ACADEMIC AFFAIRS

ORGANIZATIONAL CHART

CHART (B)

APPROVED BY THE UNIVERSITY
 BOARD OF REGENTS
 NOV 21 2003
 Date



NOTE: All positions in Community Colleges Academic Affairs to be redescribed, also Pos. No. 89051.

* Proposed position classification
 ^ Excluded from position count, this chart

	<u>Perm</u>
General Fund	8.25
Federal Funds	1.75

STATE OF HAWAII
UNIVERSITY OF HAWAII
SYSTEMWIDE ADMINISTRATION
OFFICE OF THE VICE PRESIDENT FOR
ACADEMIC AFFAIRS
PLANNING AND POLICY

POSITION ORGANIZATION CHART

CHART (C)

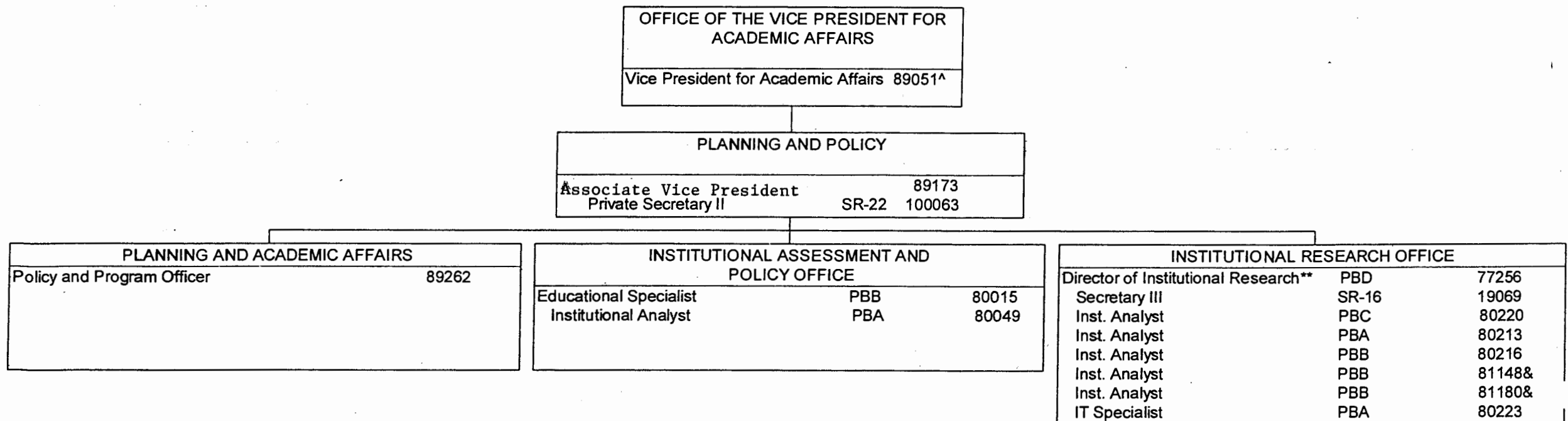


CHART UPDATED
DATE JUL 01 2003

** Broad Band title Institutional Support

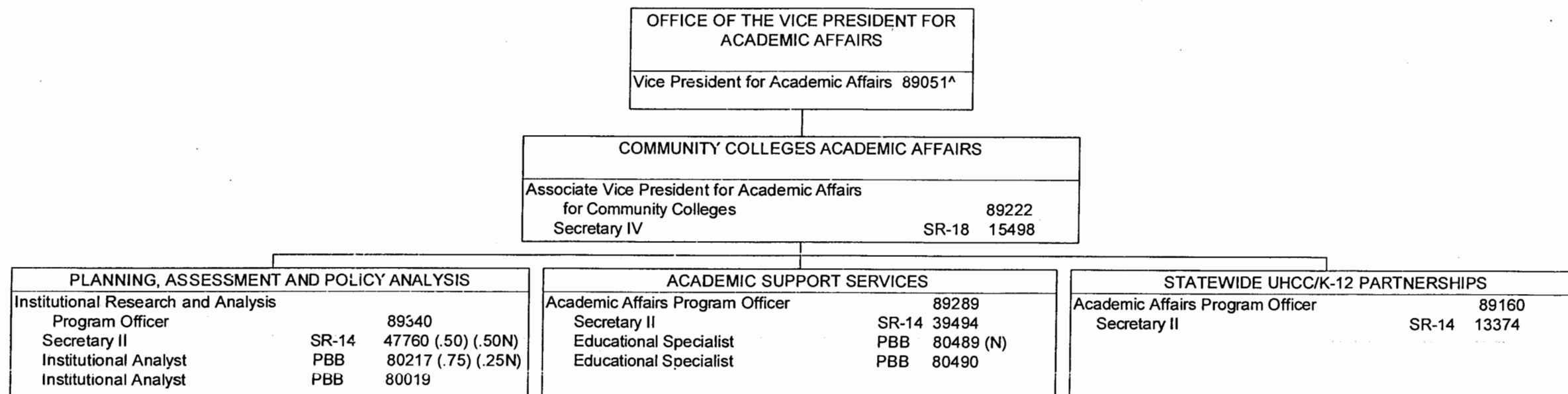
^ Excluded from position count, this chart
& Part of the UOH 902 appropriation reflected organizationally on this chart,
Excluded from position count, this chart

	<u>Perm</u>
General Fund	11.00
General Fund (UOH 902)	2.00

STATE OF HAWAII
UNIVERSITY OF HAWAII
SYSTEMWIDE ADMINISTRATION
OFFICE OF THE VICE PRESIDENT FOR
ACADEMIC AFFAIRS
COMMUNITY COLLEGES ACADEMIC AFFAIRS

POSITION ORGANIZATION CHART

CHART (B)



^ Excluded from position count, this chart
Note: All positions on this chart part of the UOH 906 appropriation, reflected organizationally on this chart

SUPERSEDED
Date NOV 21 2003 **DATE** CHART UPDATED JUL 01 2003

	<u>Perm</u>
General Fund	10.25
Federal Funds	1.75