

STATE OF HAWAI'I  
UNIVERSITY OF HAWAI'I  
SYSTEMWIDE ADMINISTRATION  
OFFICE OF THE VICE PRESIDENT FOR  
EXTERNAL AFFAIRS AND UNIVERSITY  
RELATIONS  
POSITION ORGANIZATION CHART

CHART I

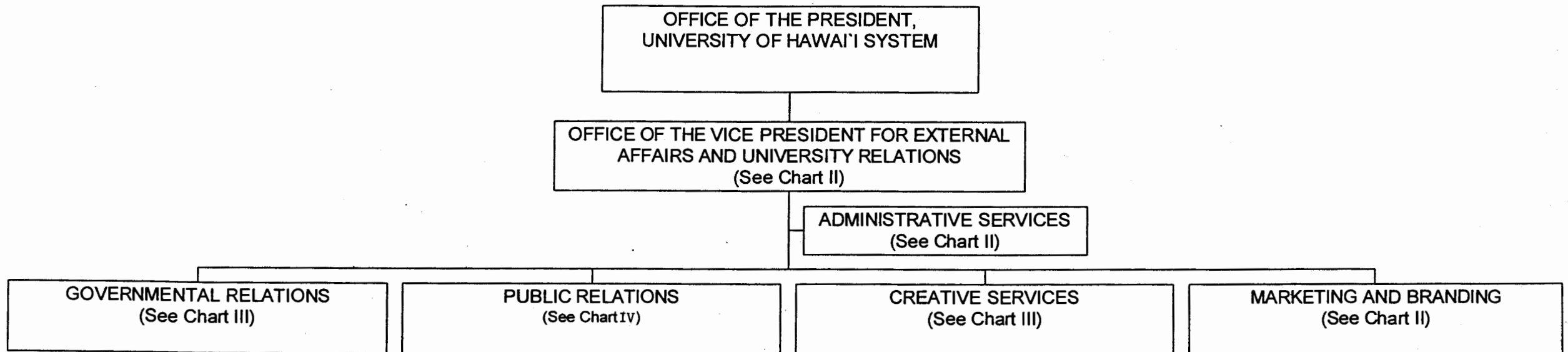
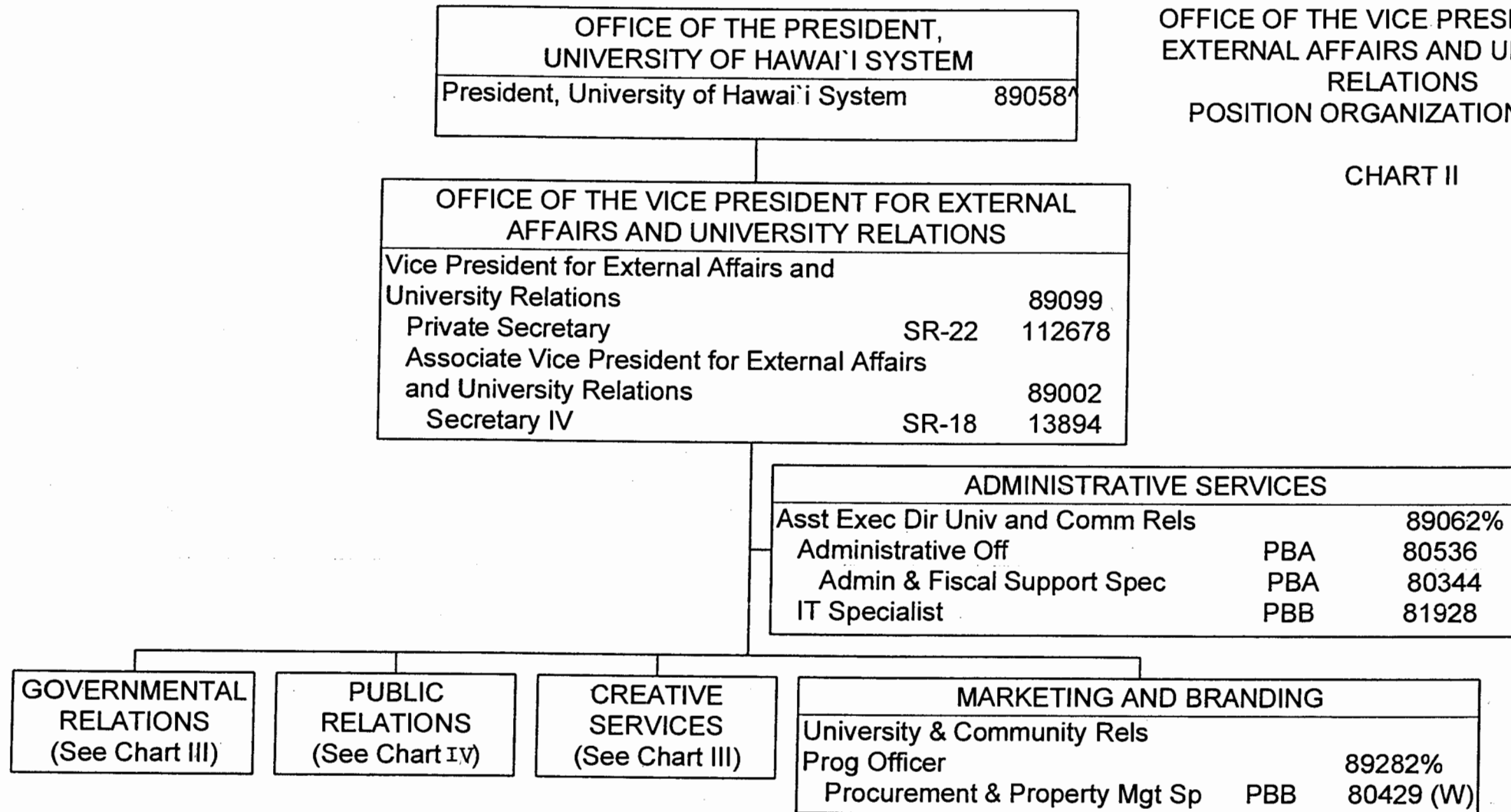


CHART UPDATED  
DATE JUL 01 2003

STATE OF HAWAII  
UNIVERSITY OF HAWAII  
SYSTEMWIDE ADMINISTRATION  
OFFICE OF THE VICE PRESIDENT FOR  
EXTERNAL AFFAIRS AND UNIVERSITY  
RELATIONS  
POSITION ORGANIZATION CHART

CHART II



STATE OF HAWAII  
UNIVERSITY OF HAWAII  
SYSTEMWIDE ADMINISTRATION  
OFFICE OF THE VICE PRESIDENT FOR  
EXTERNAL AFFAIRS AND UNIVERSITY  
RELATIONS  
POSITION ORGANIZATION CHART

CHART III

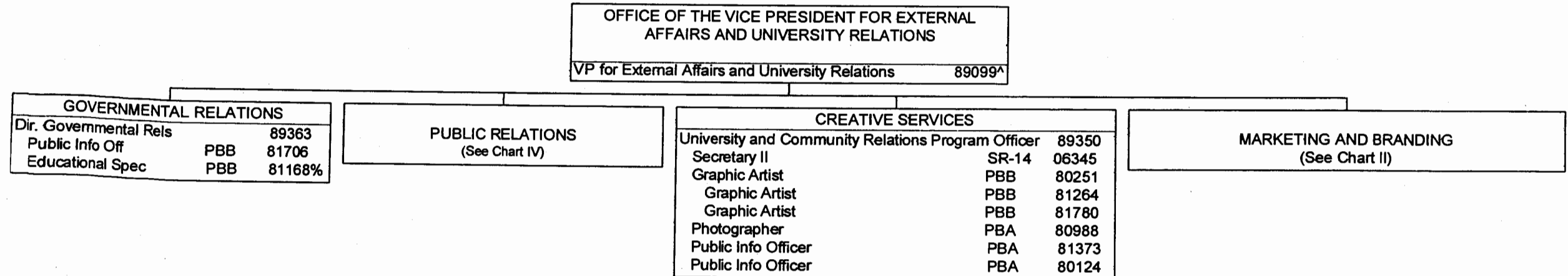


CHART UPDATED  
DATE JUL 01 2003

General Fund Perm  
11.00

% To be redescribed  
^ Excluded from position count, this chart

STATE OF HAWAII  
UNIVERSITY OF HAWAII  
SYSTEMWIDE ADMINISTRATION  
OFFICE OF THE VICE PRESIDENT FOR EXTERNAL  
AFFAIRS AND UNIVERSITY RELATIONS  
POSITION ORGANIZATION CHART

CHART IV

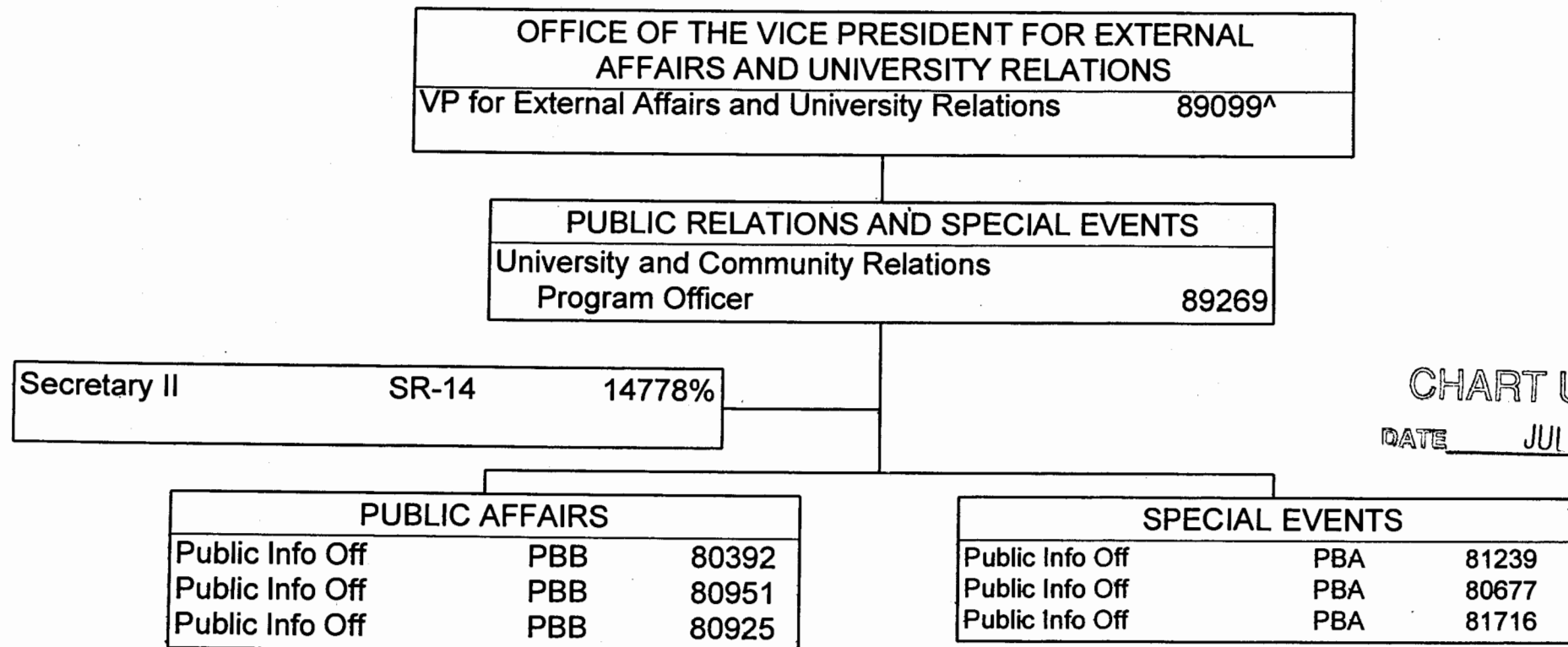


CHART UPDATED

DATE JUL 01 2003

% To be redescribed

^ Excluded from position count, this chart

Perm  
General Fund 8.00