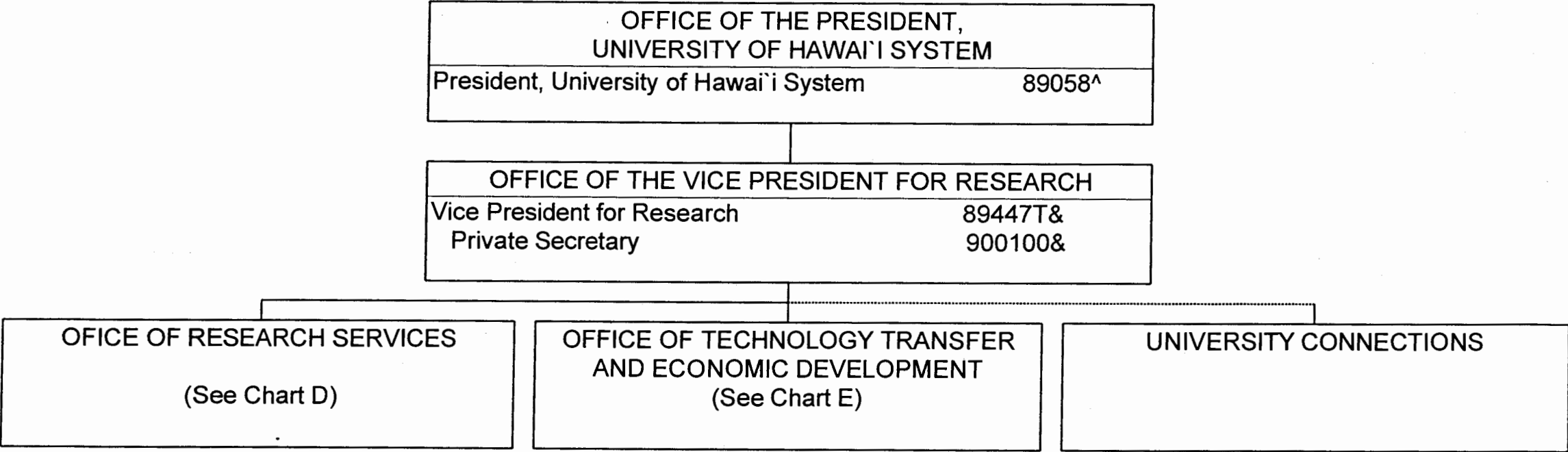


STATE OF HAWAII  
UNIVERSITY OF HAWAII  
SYSTEMWIDE ADMINISTRATION  
OFFICE OF THE VICE PRESIDENT FOR  
RESEARCH

POSITION ORGANIZATION CHART



& Positions on this chart are Temporary and not part of the appropriated position count, reflected organizationally on this chart.

^ Excluded from position count, this chart

STATE OF HAWAII  
UNIVERSITY OF HAWAII  
SYSTEMWIDE ADMINISTRATION  
OFFICE OF THE VICE PRESIDENT FOR  
RESEARCH  
OFFICE OF RESEARCH SERVICES  
POSITION ORGANIZATION CHART  
CHART D

OFFICE OF THE VICE PRESIDENT FOR RESEARCH		
Vice President for Research	89447T^	

OFFICE OF RESEARCH SERVICES		
Director of Research Services		89006%
Secretary III	SR-16	19369
Associate Dir. of Research	PBD	81645
Clerk-Stenographer III	SR-11	50041

GENERAL ADMINISTRATION		
IT Specialist	PBB	81982
Admin. Officer	PBA	80808

CONTRACT ADMINISTRATION		
Admin. Off.	PBB	81139
Admin. Off.	PBB	80581
Clk-Steno. III	SR-11	15410
Admin. Off.	PBB	81940
Clk-Typist II	SR-08	41987
Admin. Off.	PBC	81317

SPONSORED PROJECTS ACCOUNTS		
Fiscal Acctg. Sp.	PBC	80206
Fiscal Acctg. Sp.	PBA	81263
Acct. Clk. V	SR-15	48524
Acct. Clk. IV	SR-13	15526
Acct. Clk. IV	SR-13	14776
Acct. Clk. IV	SR-13	31590
Acct. Clk. IV	SR-13	14020
Acct. Clk. IV	SR-13	48521
Acct. Clk. IV	SR-13	48522
Acct. Clk. IV	SR-13	48523
Fiscal Acctg. Sp.	PBA	80195
Fiscal Acctg. Sp.	PBB	80139
Fiscal Acctg. Sp.	PBB	80147
Fiscal Acctg. Sp.	PBB	80138
Fiscal Acctg. Sp.	PBA	80145

COST STUDIES AND RATE ANALYSIS		
Fiscal Acctg. Sp.	PBD	80379
Fiscal Acctg. Sp.	PBA	81785
Fiscal Acctg. Sp.	PBB	81798
Fiscal Acctg. Sp.	PBA	81802

COMPLIANCE AND FIELD SERVICES		
Fiscal Acctg. Sp.	PBC	81017
Fiscal Acctg. Sp.	PBA	81259
Fiscal Acctg. Sp.	PBB	80976
Fiscal Acctg. Sp.	PBB	80399
Fiscal Acctg. Sp.	PBB	81885
Fiscal Acctg. Sp.	PBB	80557
Admin. Officer	PBB	80180 (.50,
Admin. Officer	PBB	81471
Admin. Officer	PBB	80196
Fiscal Acctg. Sp.	PBA	81930
Admin. Officer	PBB	80181
Clerk-Typist III	SR-10	26507
Admin. Officer	PBA	81389
Fiscal Acctg. Sp.	PBB	80161

CHART UPDATED  
JUL 01 2003  
DATE \_\_\_\_\_

% To be redescribed

^ Excluded from position count, this chart

& Position count on this chart not part of the appropriation for UOH 903

Perm  
General Fund 44.50&

# VICE PRESIDENT FOR RESEARCH

## OFFICE OF RESEARCH SERVICES

Director of Research Services		89006
Secretary III	SR-16	19369
Associate Dir of Research	PBD	81645
Clerk Steno III	SR-11	50041

## IT SUPPORT

IT Specialist	PBB	81982
Admin Officer	PBA	80808

## CONTRACT ADMINISTRATION

Admin Officer	PBB	81139
Admin Officer	PBB	80581
Clk Steno III	SR-11	15410
Admin Officer	PBB	81940
Clk Typist II	SR-08	41987
Admin Officer	PBC	81317

## SPONSORED PROJECTS ACCOUNTING

Fiscal Acctg Sp	PBC	80206
Fiscal Acctg Sp	PBA	81263
Acct Clk V	SR-15	48524
Acct Clk IV	SR-13	15526
Acct Clk IV	SR-13	14776
Acct Clk IV	SR-13	31590
Acct Clk IV	SR-13	14020
Acct Clk IV	SR-13	48521
Acct Clk IV	SR-13	48522
Acct Clk IV	SR-13	48523
Fiscal Acctg Sp	PBA	80195
Fiscal Acctg Sp	PBB	80139
Fiscal Acctg Sp	PBB	80147
Fiscal Acctg Sp	PBB	80138
Fiscal Acctg Sp	PBB	80145
Fiscal Acctg Sp	PBA	81930

## COST STUDIES AND RATE ANALYSIS

Fiscal Acctg Sp	PBD	80379
Fiscal Acctg Sp	PBA	81785
Fiscal Acctg Sp	PBB	81798
Fiscal Acctg Sp	PBA	81802

## COMPLIANCE AND FIELD SERVICES

Fiscal Acctg Sp	PBC	81017
Fiscal Acctg Sp	PBA	81259
Fiscal Acctg Sp	PBB	80976
Fiscal Acctg Sp	PBB	80399
Fiscal Acctg Sp	PBB	81885
Fiscal Acctg Sp	PBB	80557
Admin Officer	PBB	80180 .50
Admin Officer	PBB	81471
Admin Officer	PBB	80196
Clk Typist III	SR-10	26507
Admin Officer	PBA	81389
Fiscal Acctg Sp	PBB	80161

STATE OF HAWAII

UNIVERSITY OF HAWAII

OFFICE OF THE VICE PRESIDENT FOR RESEARCH  
OFFICE OF RESEARCH SERVICES

POSITION ORGANIZATION CHART  
Chart III

CHART UPDATED

DATE JUL - 1 2003

GENERAL FUND POSITIONS

43.50

Rev. 07/01/03

STATE OF HAWAII  
UNIVERSITY OF HAWAII  
SYSTEMWIDE ADMINISTRATION  
OFFICE OF THE VICE PRESIDENT FOR  
RESEARCH  
OFFICE OF TECHNOLOGY TRANSFER AND  
ECONOMIC DEVELOPMENT

POSITION ORGANIZATION CHART  
CHART E

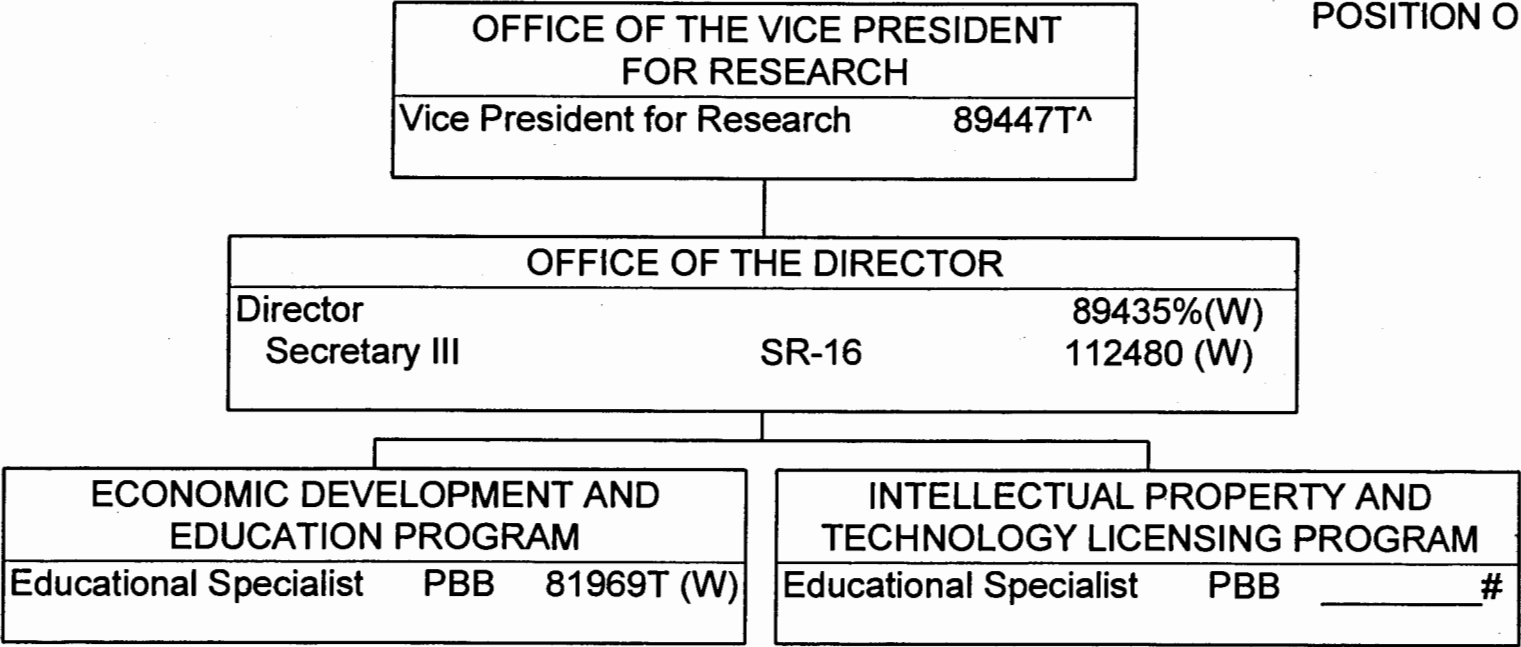


CHART UPDATED  
DATE JUL 01 2003

% To be redescribed  
# Position number to be determined, proposed classification  
^ Excluded from position count, this chart  
& Position count on this chart not part of the appropriation  
for UOH 903

	Perm	Temp
General Fund		0.00
Revolving Funds (W)	3.00&	