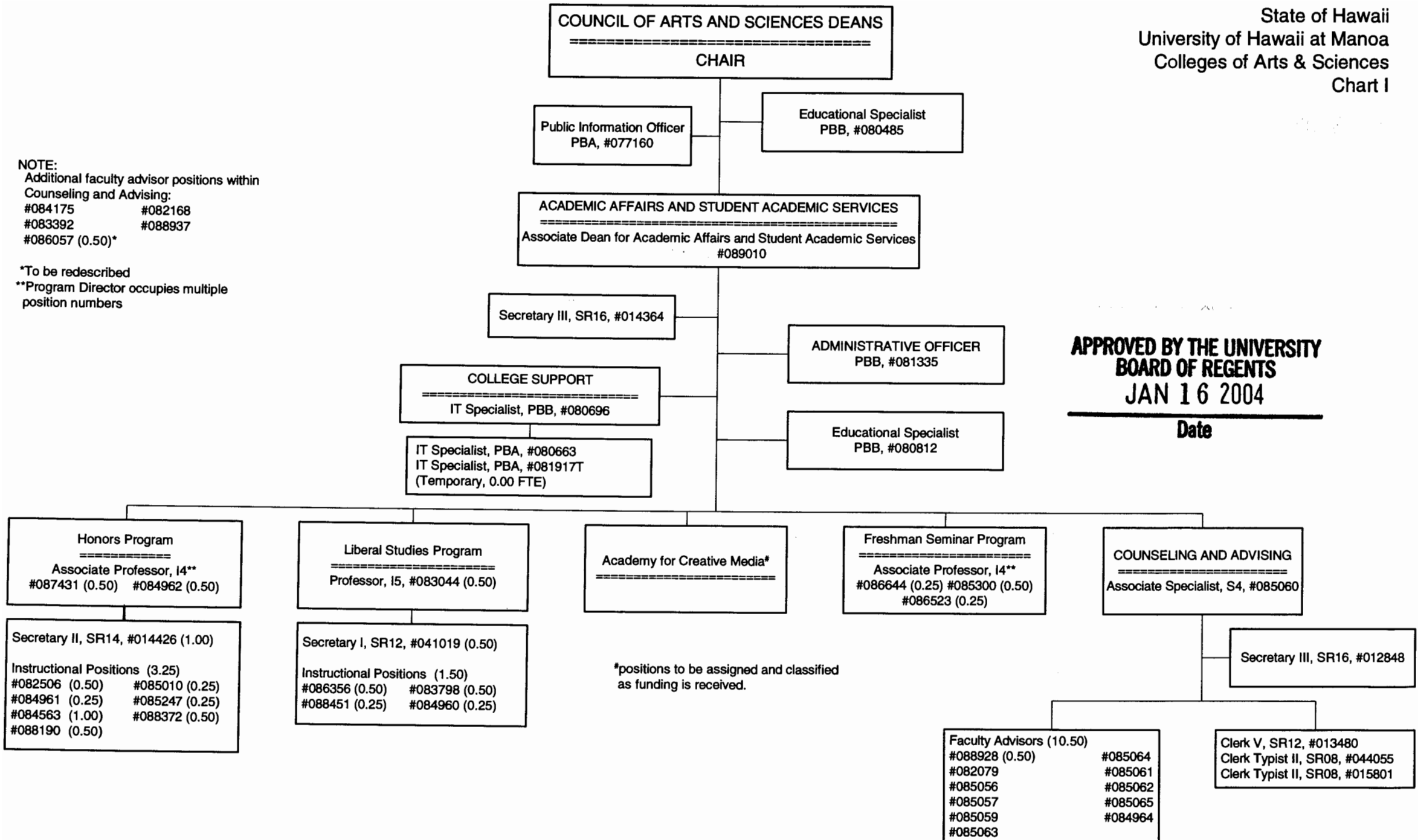


Approved by: *Ronald C. C.*
Title: Associate Dean
Date: July 11, 2003
Chart Update: July 1, 2003

CHART UPDATED
JUL - 1 2003
DATE _____

State of Hawaii
University of Hawaii at Manoa
Colleges of Arts & Sciences
Chart I



State of Hawaii
University of Hawaii at Manoa
Colleges of Arts & Sciences
Chart I

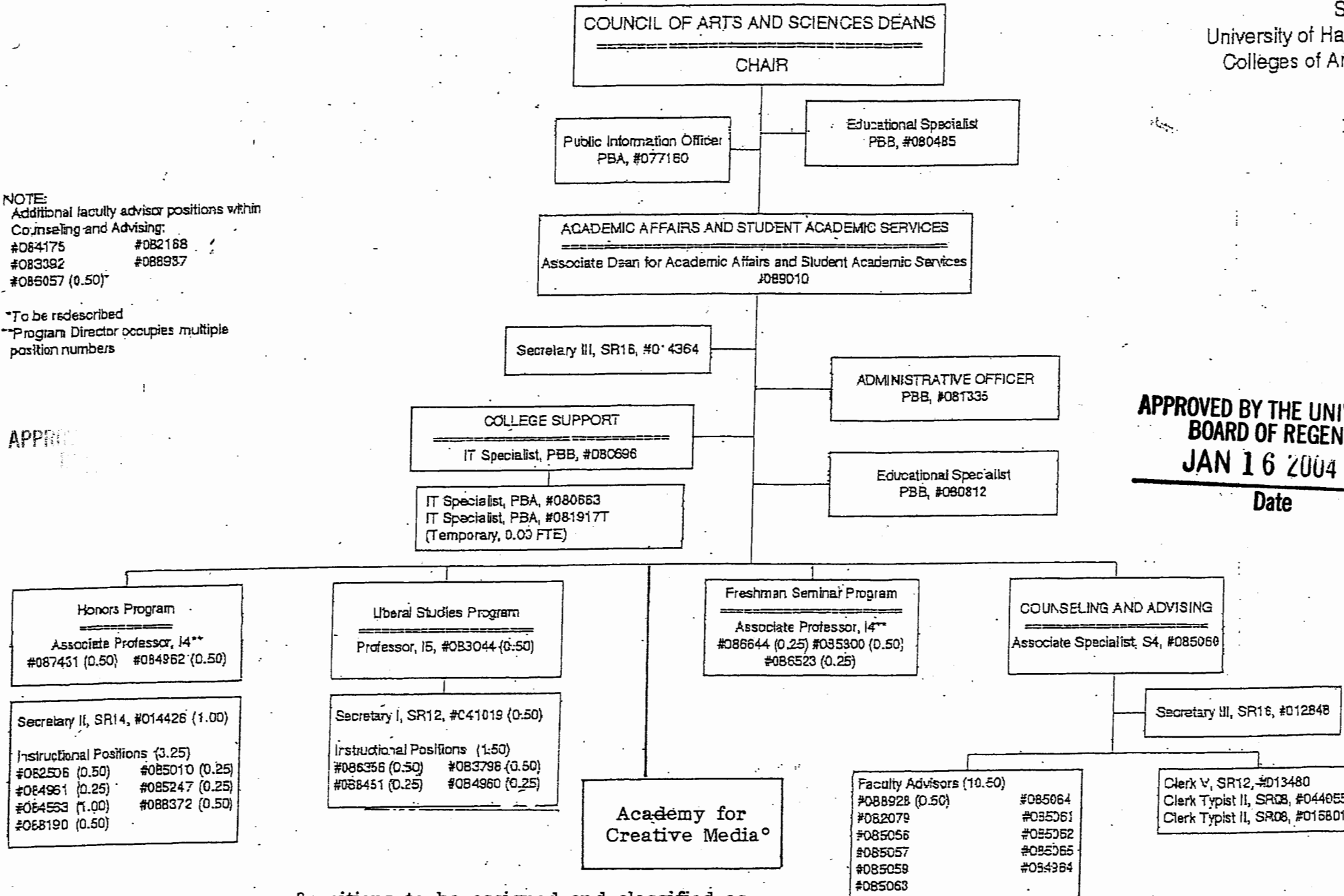
PROPOSED

APPROVED BY THE UNIVERSITY
BOARD OF REGENTS
JAN 16 2004
Date

NOTE:
Additional faculty advisor positions within
Counseling and Advising:
#084175 #082188
#083392 #088937
#085057 (0.50)*

*To be redescribed
**Program Director occupies multiple
position numbers

APPROVED

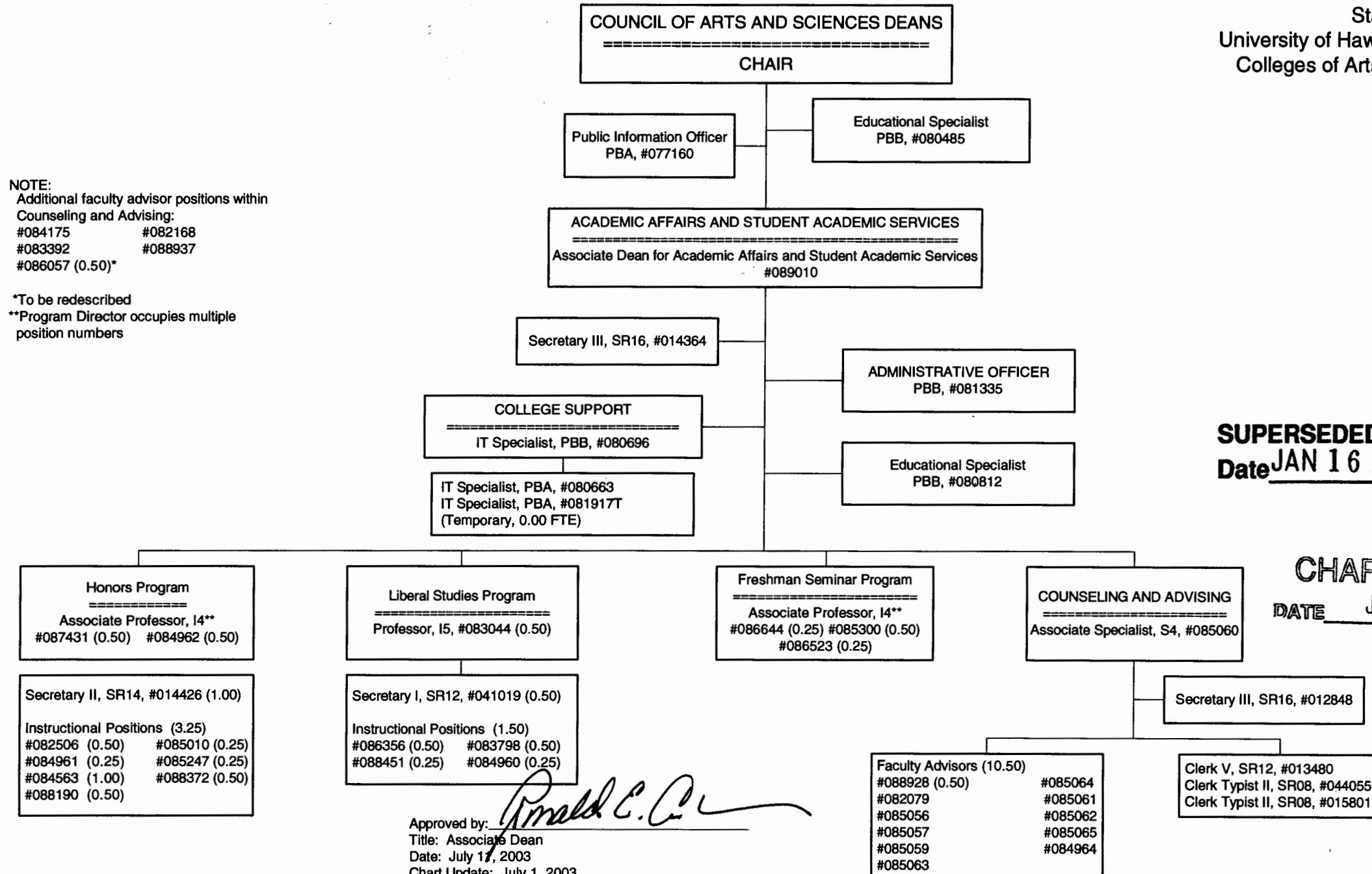


*positions to be assigned and classified as
funding is received.

State of Hawaii
University of Hawaii at Manoa
Colleges of Arts & Sciences
Chart I

NOTE:
Additional faculty advisor positions within
Counseling and Advising:
#084175 #082168
#083392 #088937
#086057 (0.50)*

*To be redescribed
**Program Director occupies multiple
position numbers



SUPERSEDED
Date JAN 16 2004

CHART UPDATED
DATE JUL - 1 2003

Approved by: *Ronald C. C.*
Title: Associate Dean
Date: July 17, 2003
Chart Update: July 1, 2003