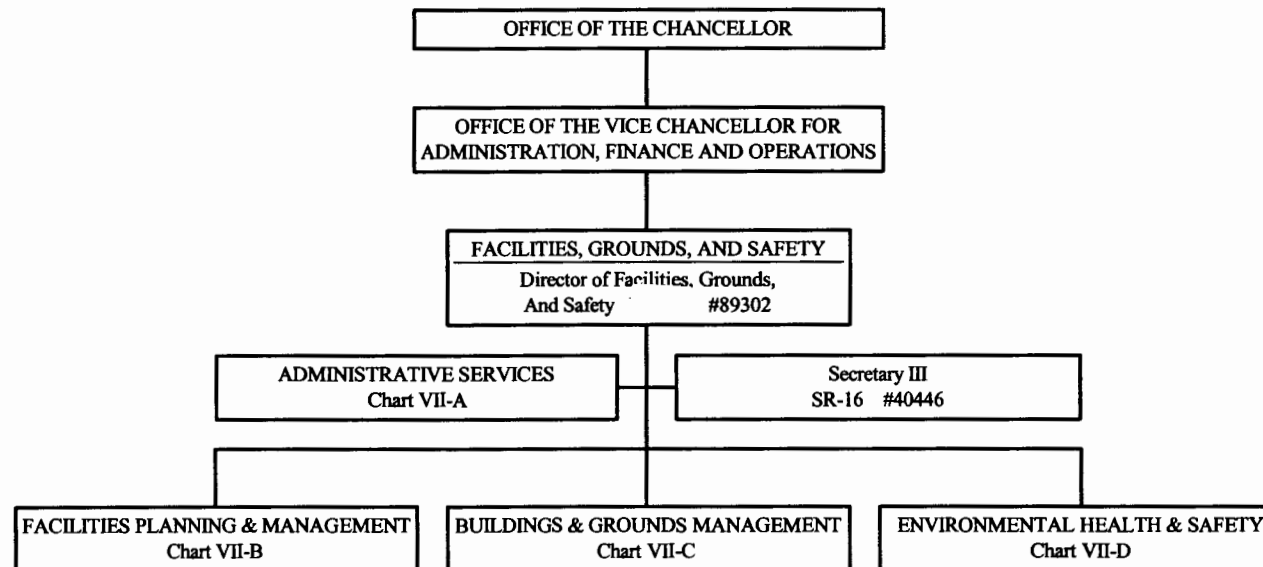


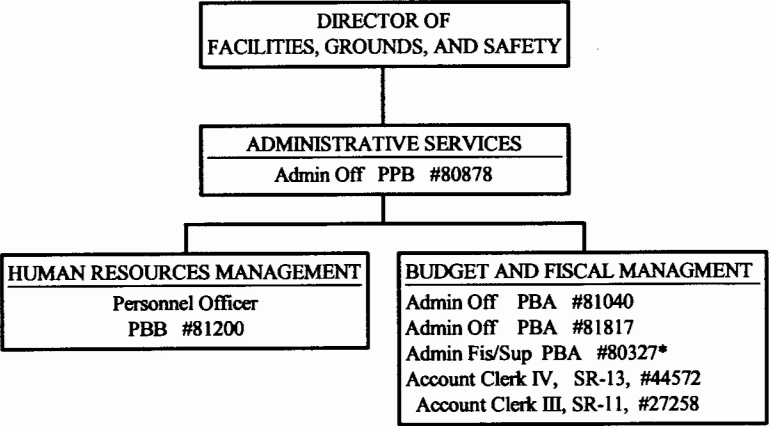
STATE OF HAWAII  
UNIVERSITY OF HAWAII  
UNIVERSITY OF HAWAII AT MANOA  
OFFICE OF THE CHANCELLOR  
FACILITIES, GROUNDS, AND SAFETY  
CHART VII



General Funds 2.00

CHART UPDATED  
JUL - 1 2003  
DATE \_\_\_\_\_

STATE OF HAWAII  
UNIVERSITY OF HAWAII  
UNIVERSITY OF HAWAII AT MANOA  
OFFICE OF THE CHANCELLOR  
FACILITIES, GROUNDS, AND SAFETY  
CHART VII-A

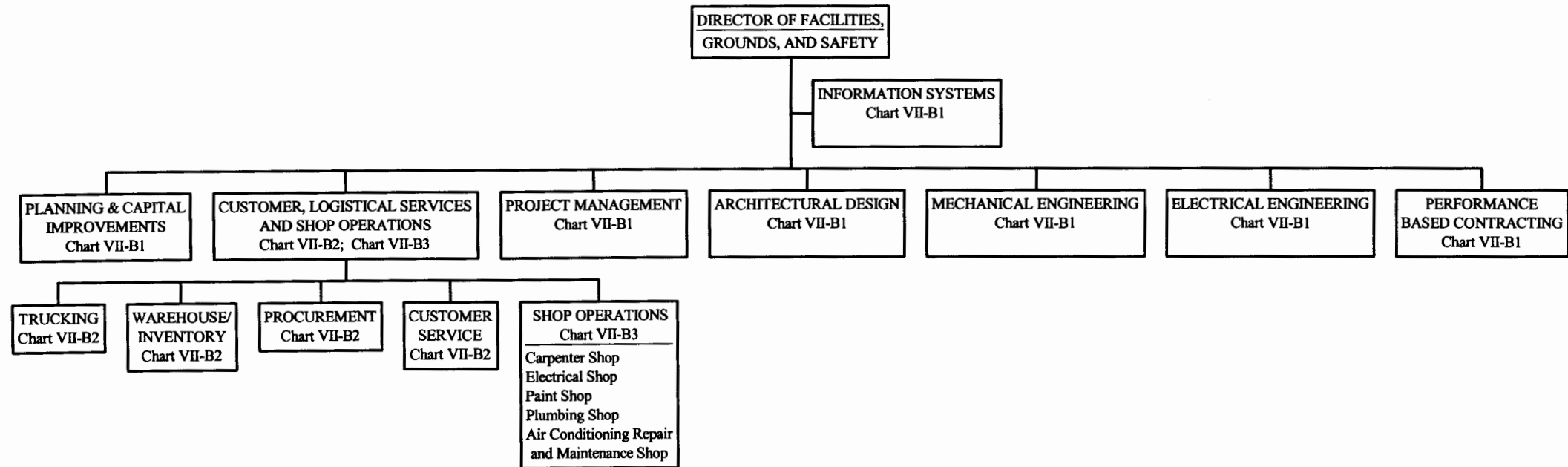


\*To be redescribed

Position Count: 7.00  
General Fund

CHART UPDATED  
DATE JUL - 1 2003

STATE OF HAWAII  
 UNIVERSITY OF HAWAII  
 UNIVERSITY OF HAWAII AT MANOA  
 OFFICE OF THE CHANCELLOR  
 FACILITIES, GROUNDS, & SAFETY  
 FACILITIES PLANNING AND MGMT OFFICE  
 CHART VII-B

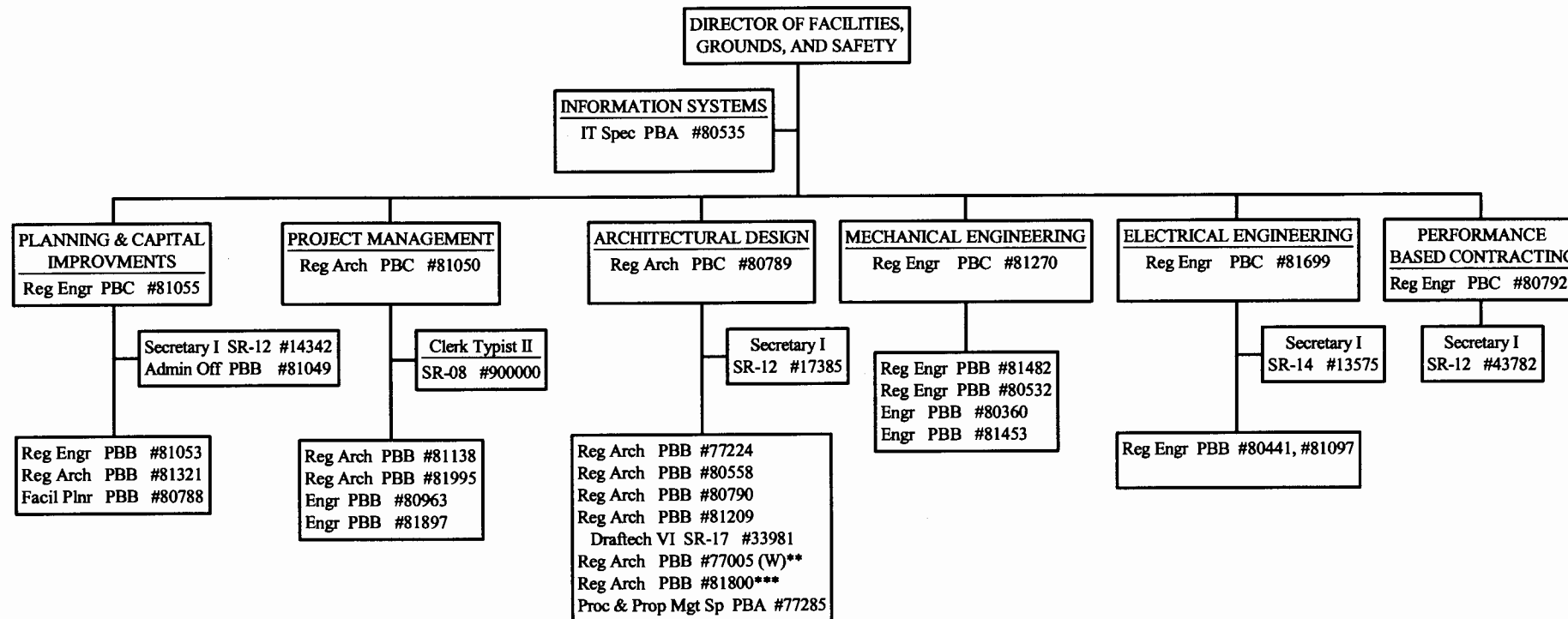


Position counts from vacancy pool to be  
 established using abolished positions:  
 #22831 (1.00); #83634 (1.00); #84281 (1.00); #84199 (1.00)

General Funds 4.00

CHART UPDATED  
 JUL - 1 2003  
 DATE \_\_\_\_\_

STATE OF HAWAII  
UNIVERSITY OF HAWAII  
UNIVERSITY OF HAWAII AT MANOA  
OFFICE OF THE CHANCELLOR  
FACILITIES, GROUNDS, AND SAFETY  
FACILITIES PLANNING AND MGMT OFFICE  
CHART VII-B1



\*To be redescribed

CHART UPDATED  
DATE JUL - 1 2003

General Funds 32.00  
(W) Revolving Funds 1.00 (\*\*Not  
included in our position count, position belongs  
to and funded by Student Hsg.)

\*\*\*1.00 Not included in our position count,  
position belongs to and funded by EEO.

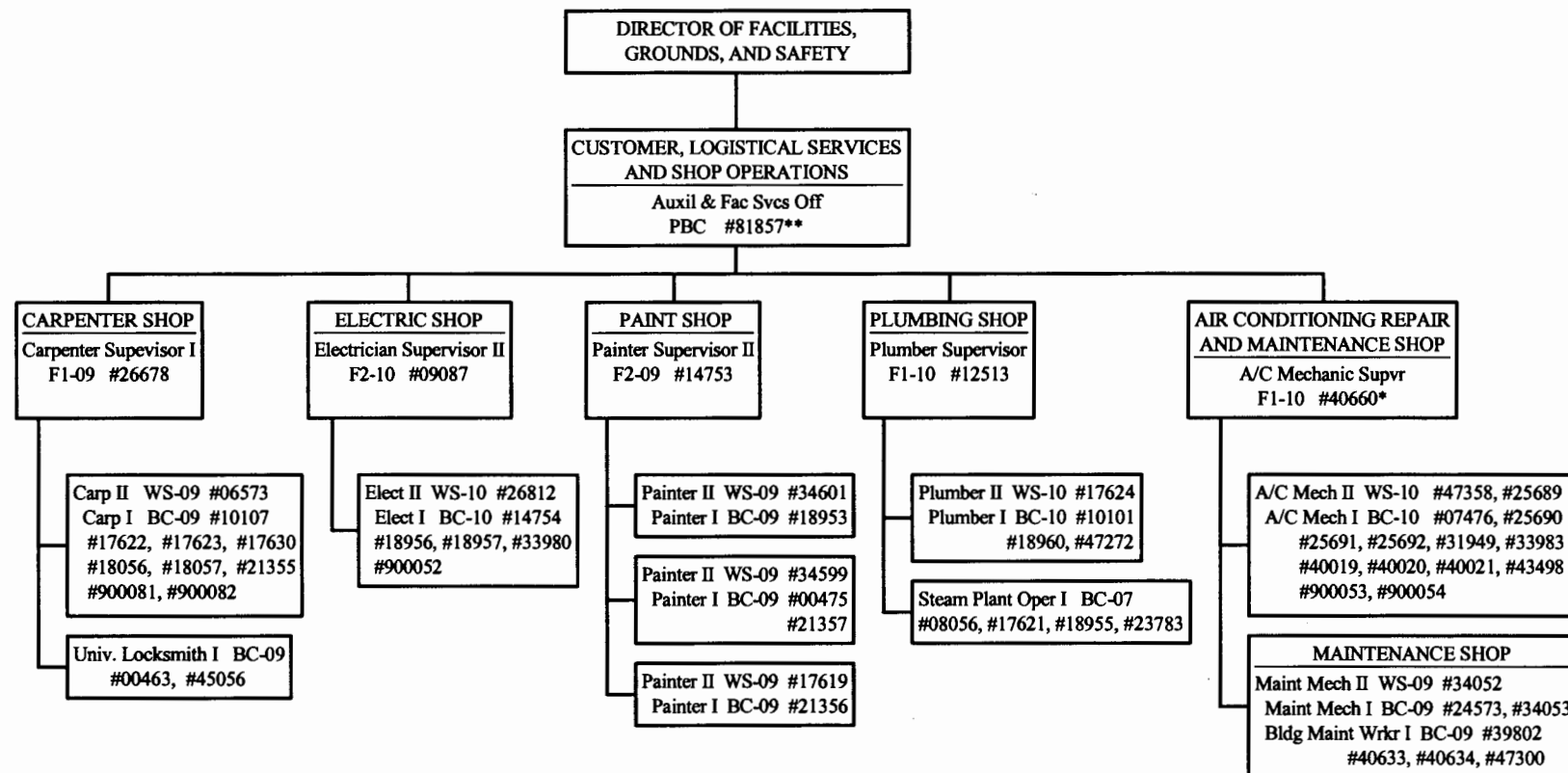
STATE OF HAWAII  
 UNIVERSITY OF HAWAII  
 UNIVERSITY OF HAWAII AT MANOA  
 OFFICE OF THE CHANCELLOR  
 FACILITIES, GROUNDS, AND SAFETY  
 FACILITIES PLANNING AND MGMT OFFICE  
 CHART VII-B2



\*To be resdescribed

General Funds 11.00

CHART UPDATED  
 DATE JUL - 1 2003

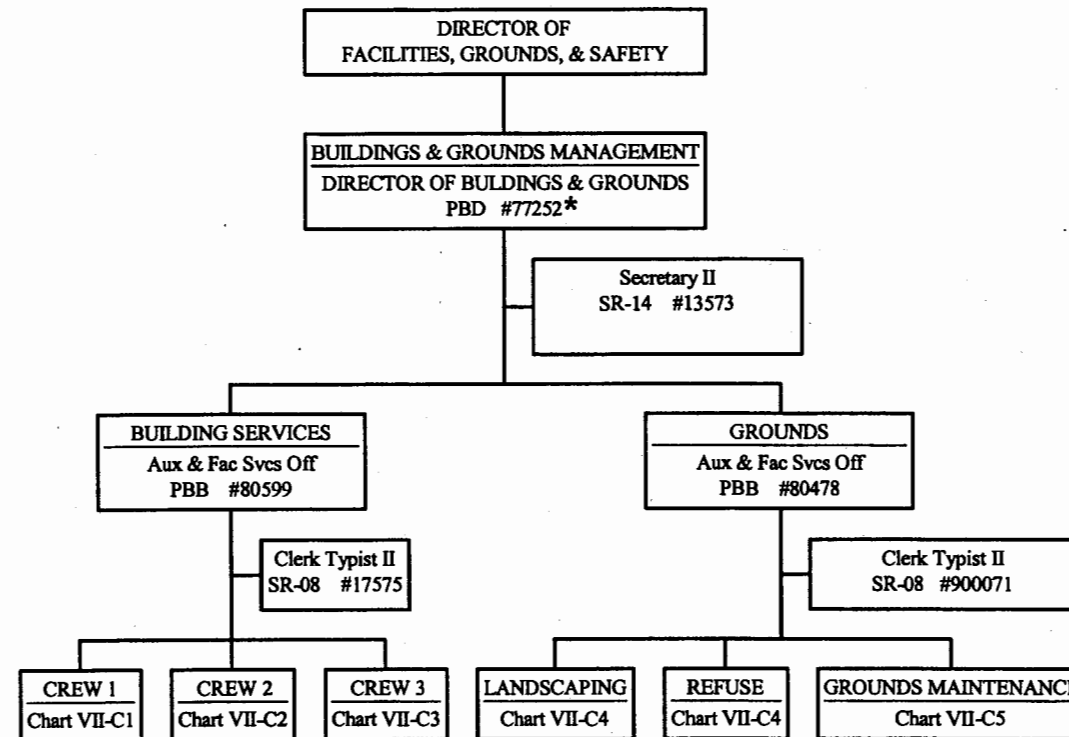


\*To be redescribed

General Funds 59.00  
 \*\*Position count not included on this page.

CHART UPDATED  
 DATE JUL - 1 2003

STATE OF HAWAII  
UNIVERSITY OF HAWAII  
UNIVERSITY OF HAWAII AT MANOA  
OFFICE OF THE CHANCELLOR  
FACILITIES, GROUNDS, AND SAFETY  
BUILDINGS & GROUNDS MANAGEMENT  
CHART VII-C



Position count from vacancy pool to be established  
using abolished position #85221 (1.00)

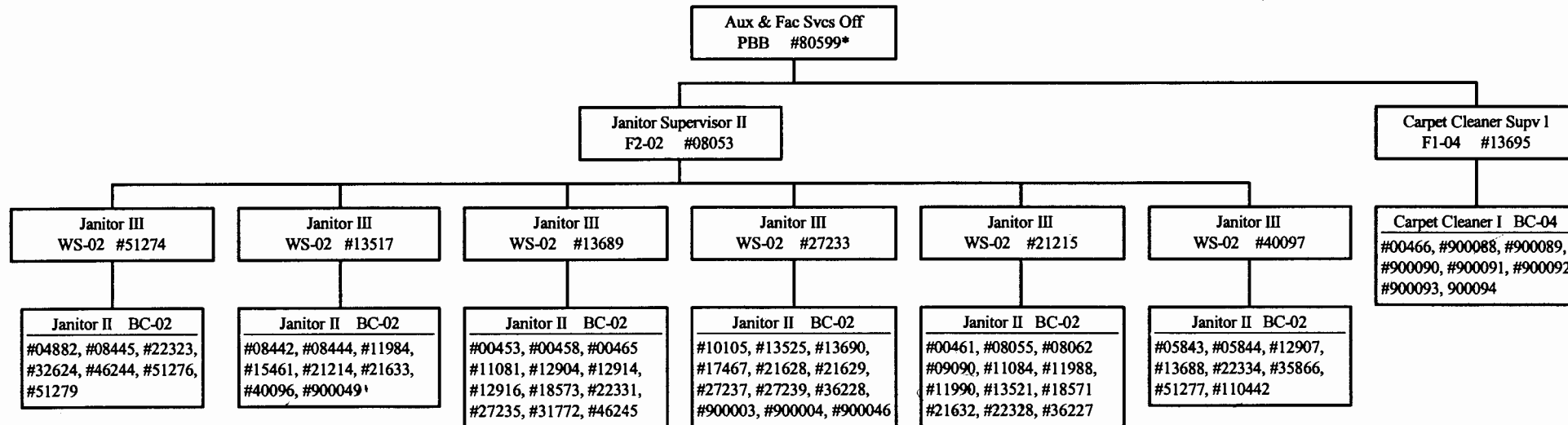
\* Functional Code Title: Aux. & Fac. Svcs. Off.

General Funds 7.00

CHART UPDATED  
DATE JUL - 1 2003

CREW 1

STATE OF HAWAII  
UNIVERSITY OF HAWAII  
UNIVERSITY OF HAWAII AT MANOA  
OFFICE OF THE CHANCELLOR  
FACILITIES, GROUNDS, AND SAFETY  
BUILDINGS & GROUNDS MANAGEMENT  
CHART VII-C1



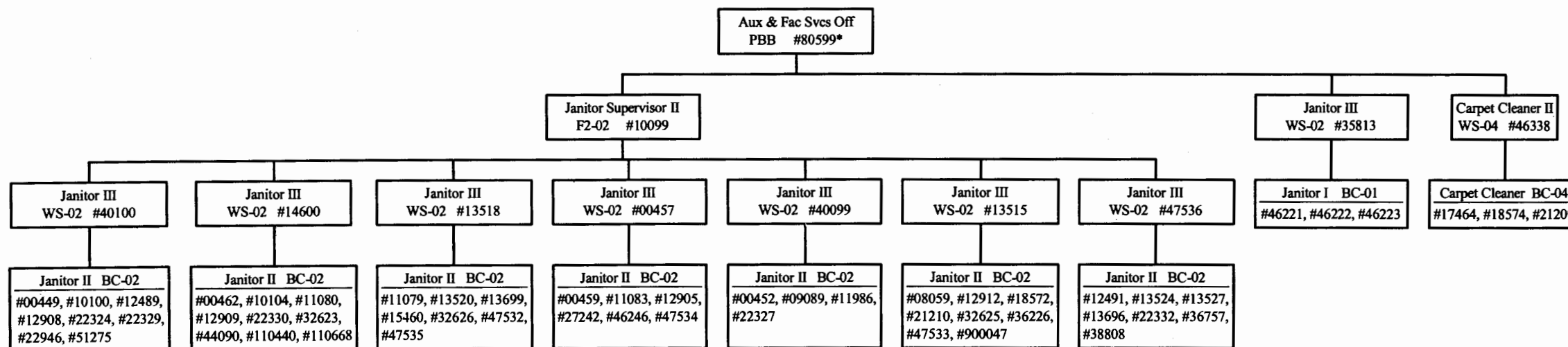
General Funds 75.00  
(\*Position count not included on  
this page)

CHART UPDATED  
DATE JUL - 1 2003



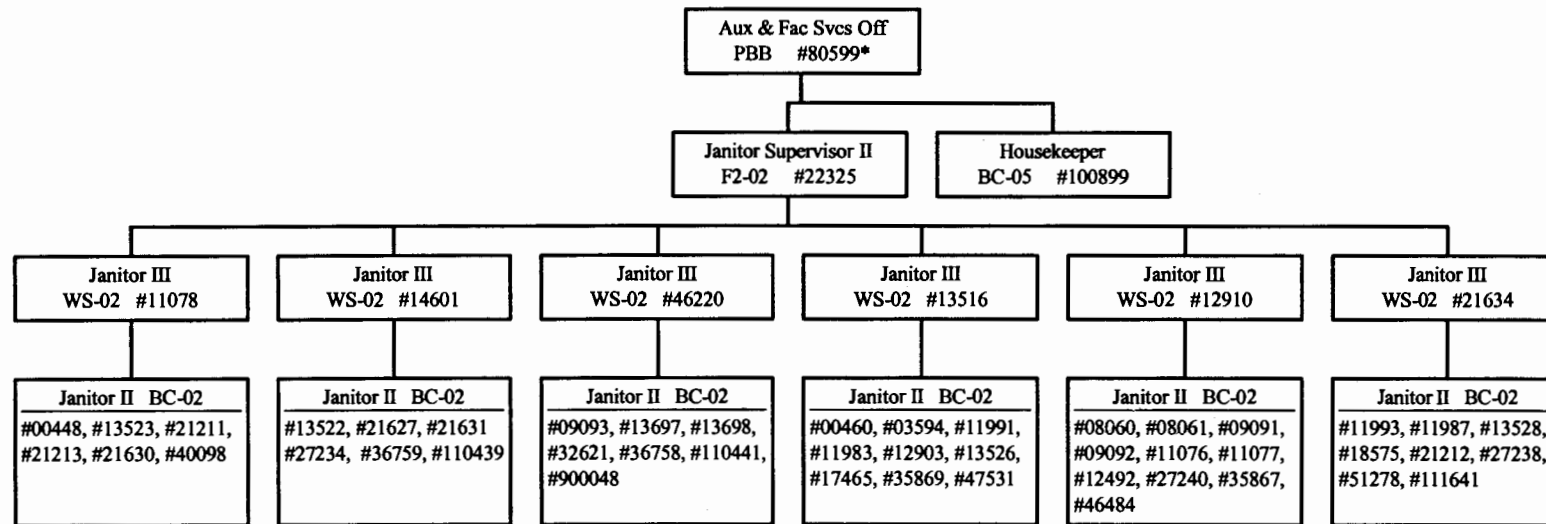
Crew 2

STATE OF HAWAII  
UNIVERSITY OF HAWAII AT MANOA  
OFFICE OF THE CHANCELLOR  
FACILITIES, GROUNDS, AND SAFETY  
BUILDINGS & GROUNDS MANAGEMENT  
CHART VII-C2



General Funds 65.00  
(\*Position count not included on this page)

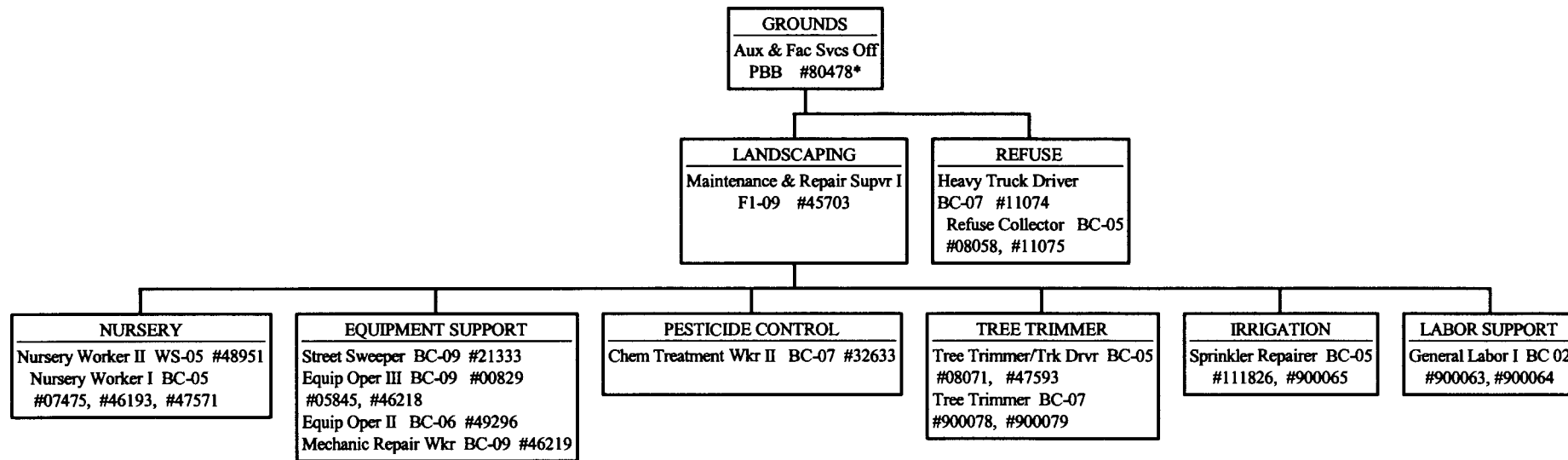
CHART UPDATED  
DATE JUL - 1 2003



General Funds 54.00  
(\*Position count not included on this page)

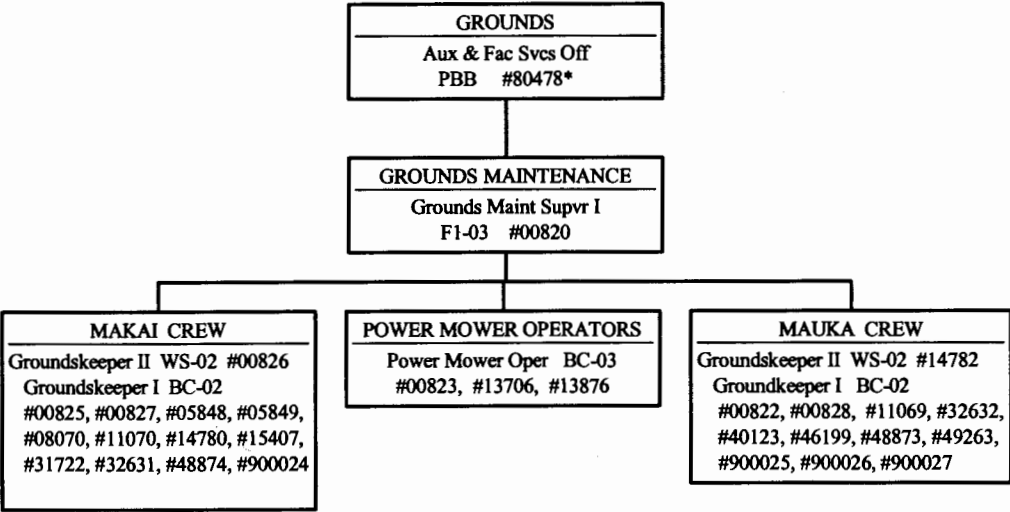
CHART UPDATED  
DATE JUL - 1 2003

STATE OF HAWAII  
UNIVERSITY OF HAWAII  
UNIVERSITY OF HAWAII AT MANOA  
OFFICE OF THE CHANCELLOR  
FACILITIES, GROUNDS, & SAFETY  
BUILDINGS & GROUNDS MANAGEMENT  
CHART VII-C4



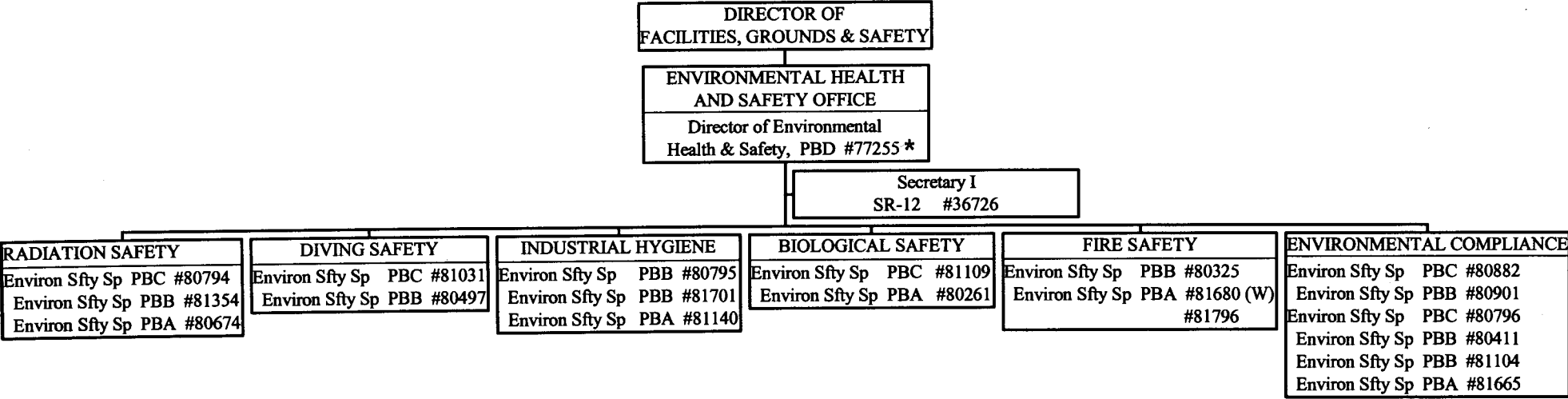
General Funds 23.00  
(\* Position count not included on this page)

CHART UPDATED  
DATE JUL - 1 2003



General Funds 29.00  
(\*Position count not included on this page)

STATE OF HAWAII  
UNIVERSITY OF HAWAII  
UNIVERSITY OF HAWAII AT MANOA  
OFFICE OF THE CHANCELLOR  
FACILITIES, GROUNDS, & SAFETY  
ENVIRONMENTAL HEALTH & SAFETY OFFICE  
CHART VII-D



\*Functional Code Title: Env. Safety Spec.

CHART UPDATED  
DATE JUL - 1 2003

General Funds 20.00  
(W) Revolving Funds 1.00 (Not  
included in our position count,  
position belongs to Student Hsg)