

UNIVERSITY OF HAWAII
UNIVERSITY OF HAWAII AT MANOA
COLLEGES OF ARTS AND SCIENCES
COLLEGE OF NATURAL SCIENCES

ORGANIZATION CHART
CHART I

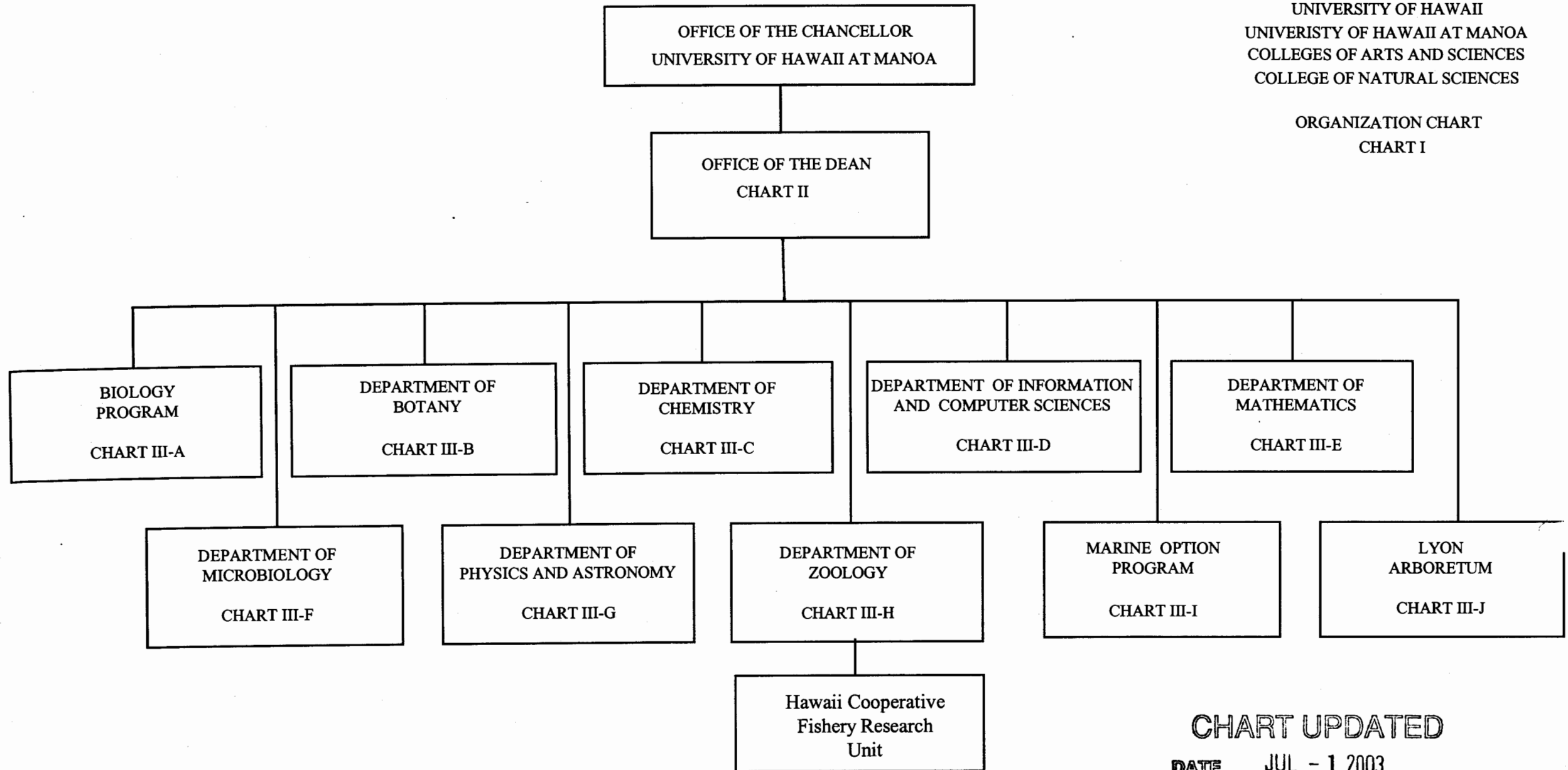


CHART UPDATED
DATE JUL - 1 2003

UNIVERSITY OF HAWAII
UNIVERSITY OF HAWAII AT MANOA
COLLEGES OF ARTS AND SCIENCES
COLLEGE OF NATURAL SCIENCES
OFFICE OF THE DEAN
POSITION ORGANIZATION CHART
CHART II

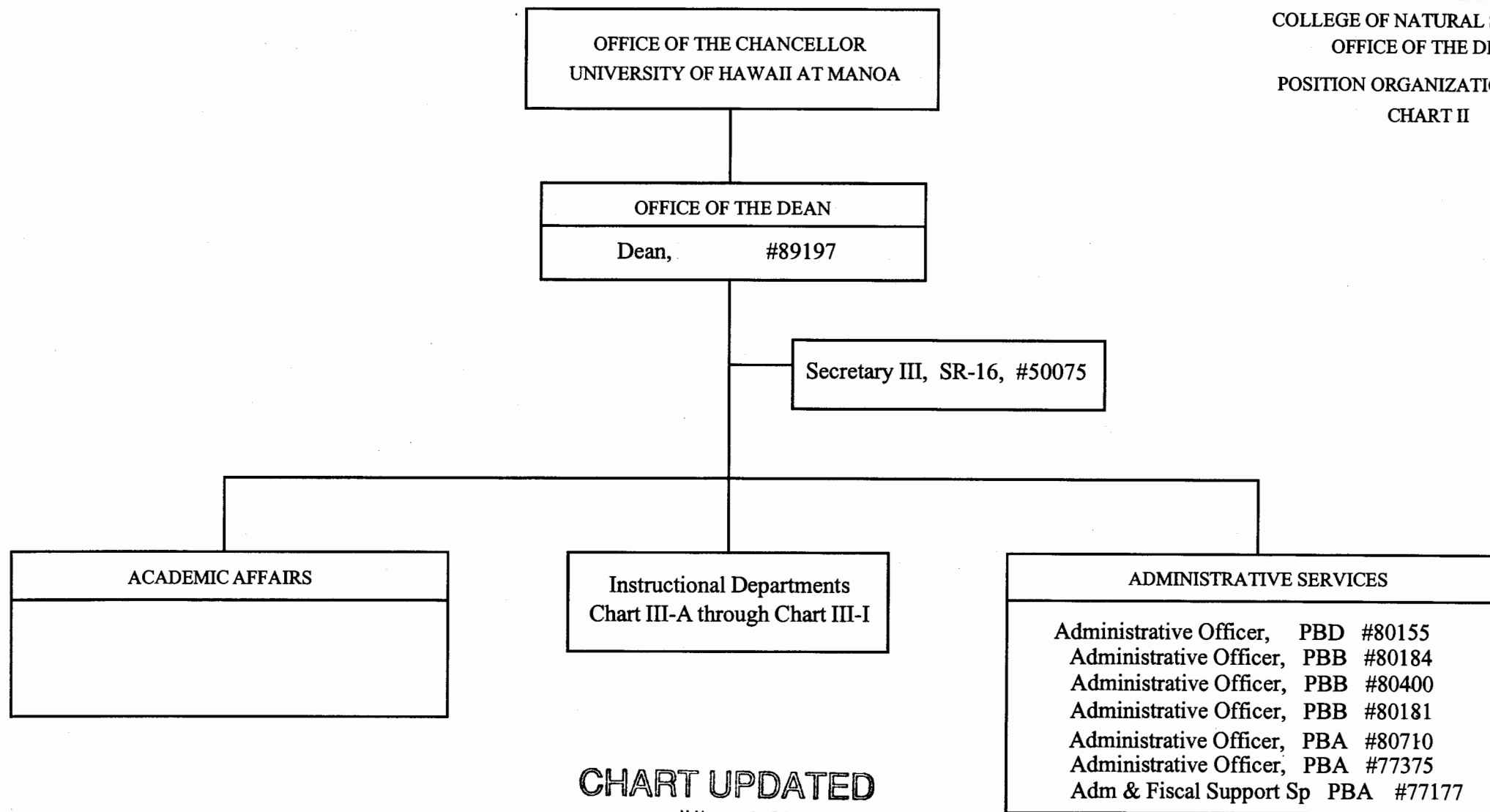
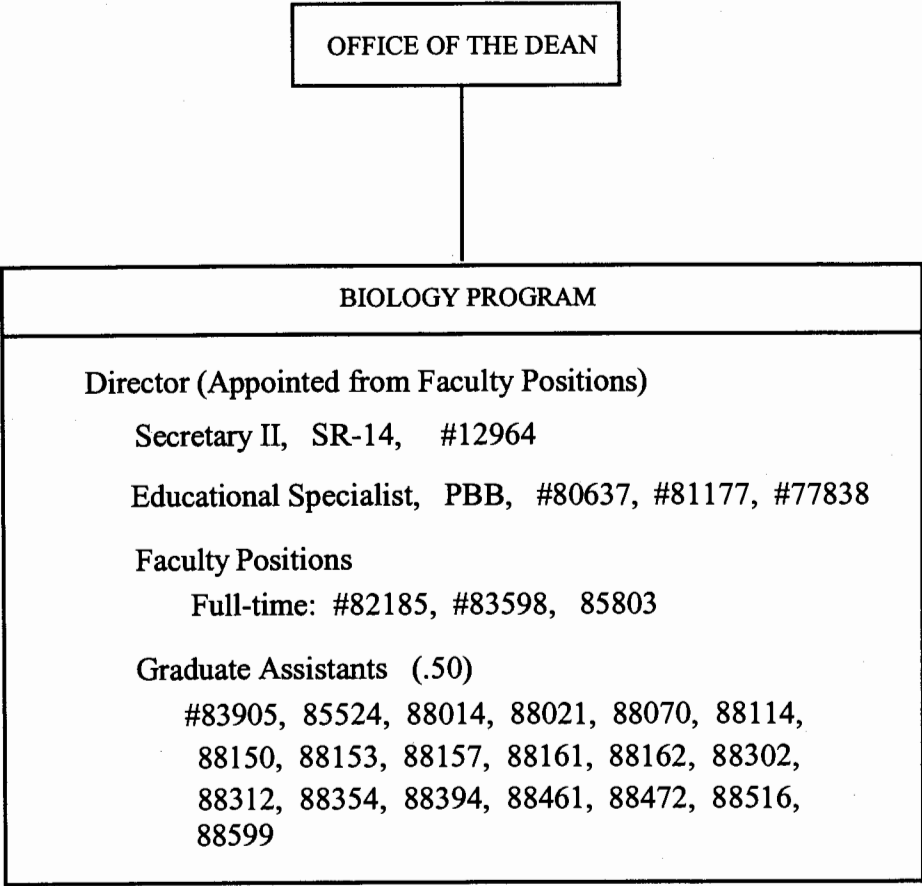


CHART UPDATED
DATE JUL - 1 2003

General Funds 9.00

UNIVERSITY OF HAWAII
UNIVERSITY OF HAWAII AT MANOA
COLLEGES OF ARTS AND SCIENCES
COLLEGE OF NATURAL SCIENCES

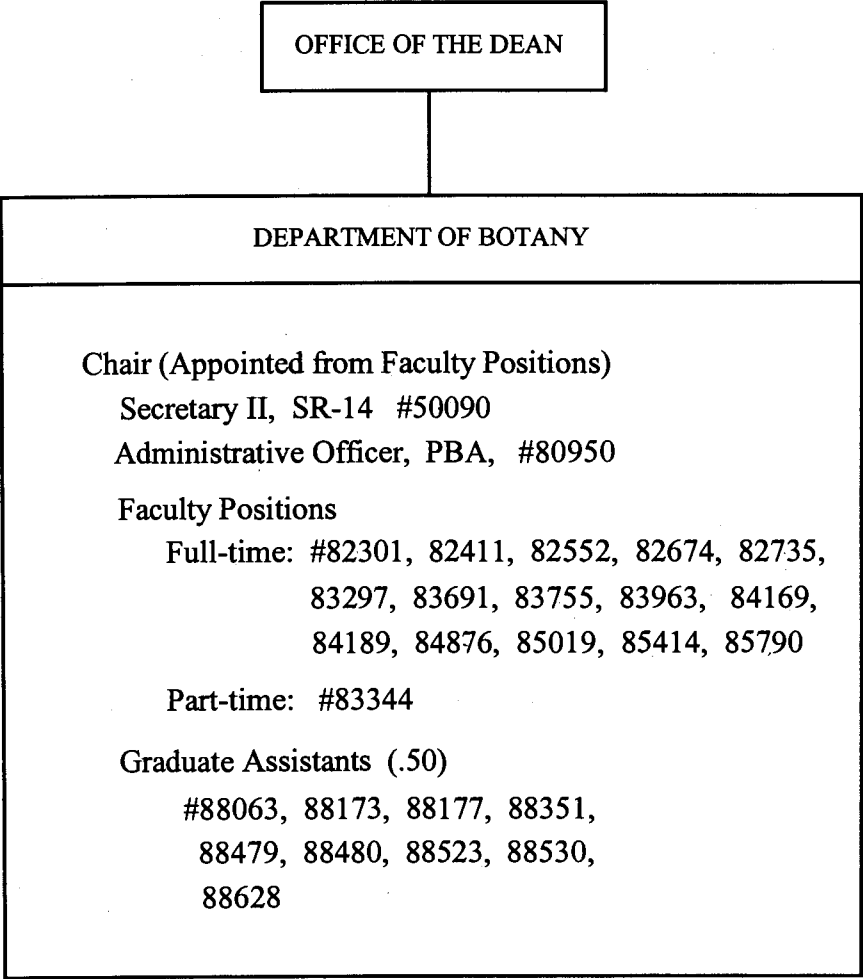
BIOLOGY PROGRAM
POSITION ORGANIZATION CHART
CHART III-A



General Funds 16.50

CHART UPDATED
DATE JUL - 1 2003

UNIVERSITY OF HAWAII
UNIVERSITY OF HAWAII AT MANOA
COLLEGES OF ARTS AND SCIENCES
COLLEGE OF NATURAL SCIENCES
DEPARTMENT OF BOTANY
POSITION ORGANIZATION CHART
CHART III-B

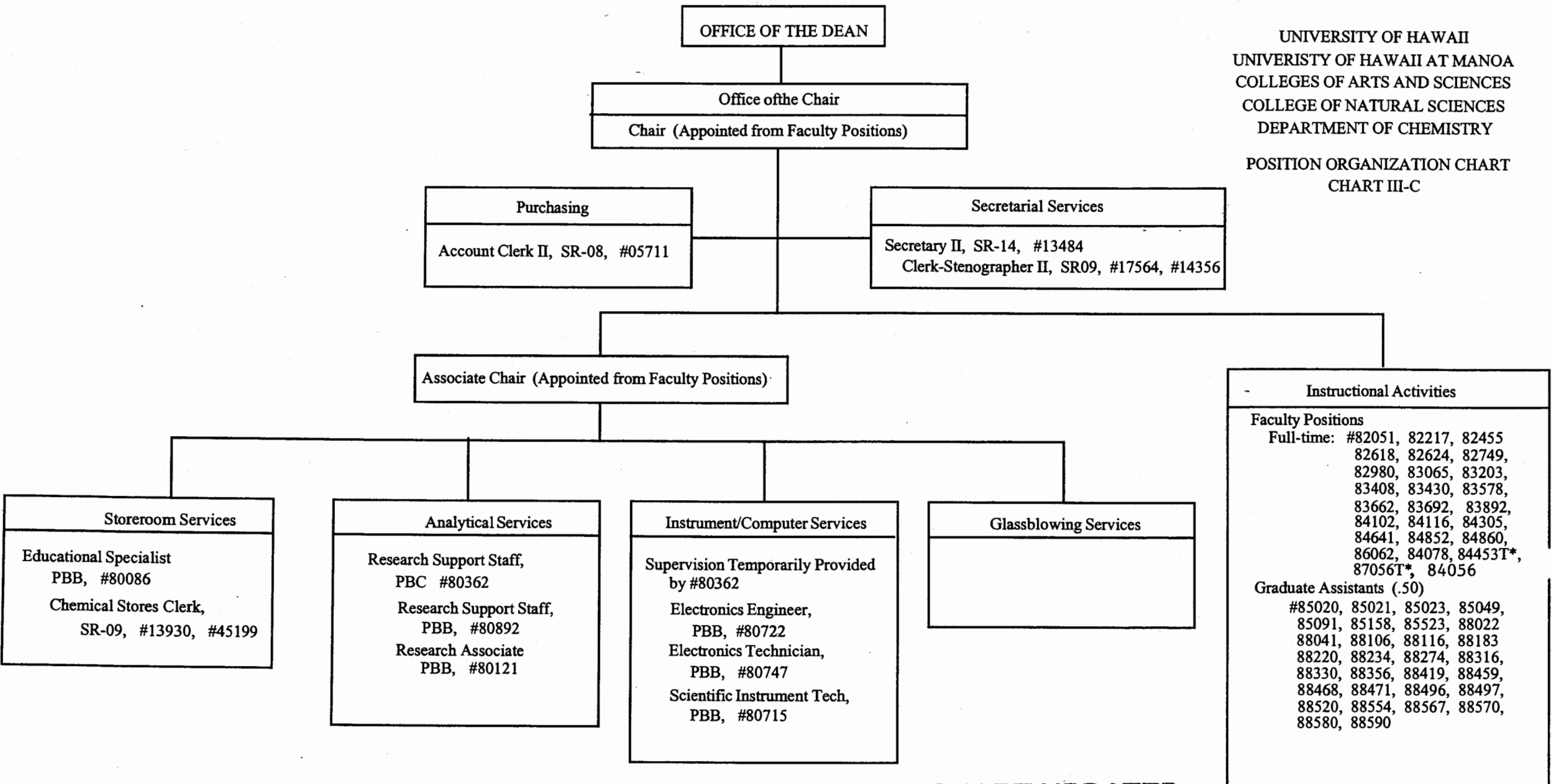


General Funds 22.00

CHART UPDATED
DATE JUL - 1 2003

UNIVERSITY OF HAWAII
UNIVERSITY OF HAWAII AT MANOA
COLLEGES OF ARTS AND SCIENCES
COLLEGE OF NATURAL SCIENCES
DEPARTMENT OF CHEMISTRY

POSITION ORGANIZATION CHART
CHART III-C

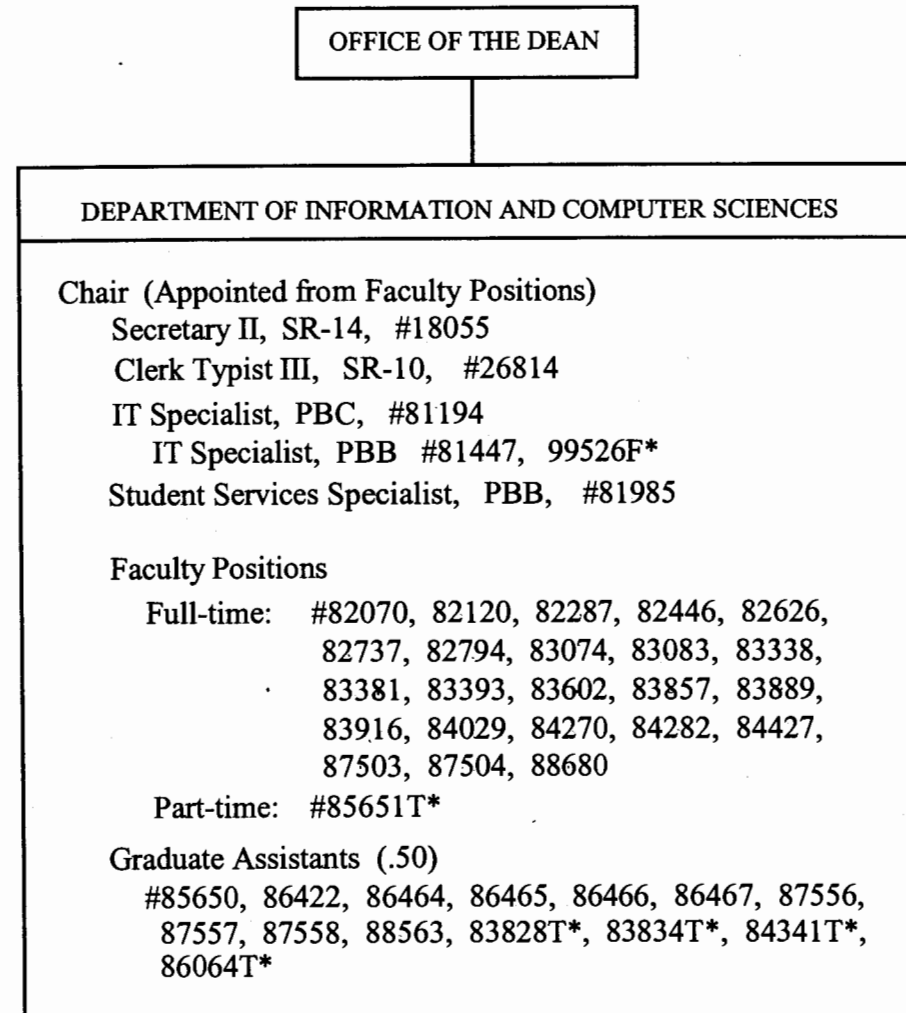


*Appropriated Temporary Positions

CHART UPDATED
DATE JUL - 1 2003

General Funds 54.00

UNIVERSITY OF HAWAII
UNIVERSITY OF HAWAII AT MANOA
COLLEGES OF ARTS AND SCIENCES
COLLEGE OF NATURAL SCIENCES
DEPARTMENT OF INFORMATION
AND COMPUTER SCIENCES
POSITION ORGANIZATION CHART
CHART III-D



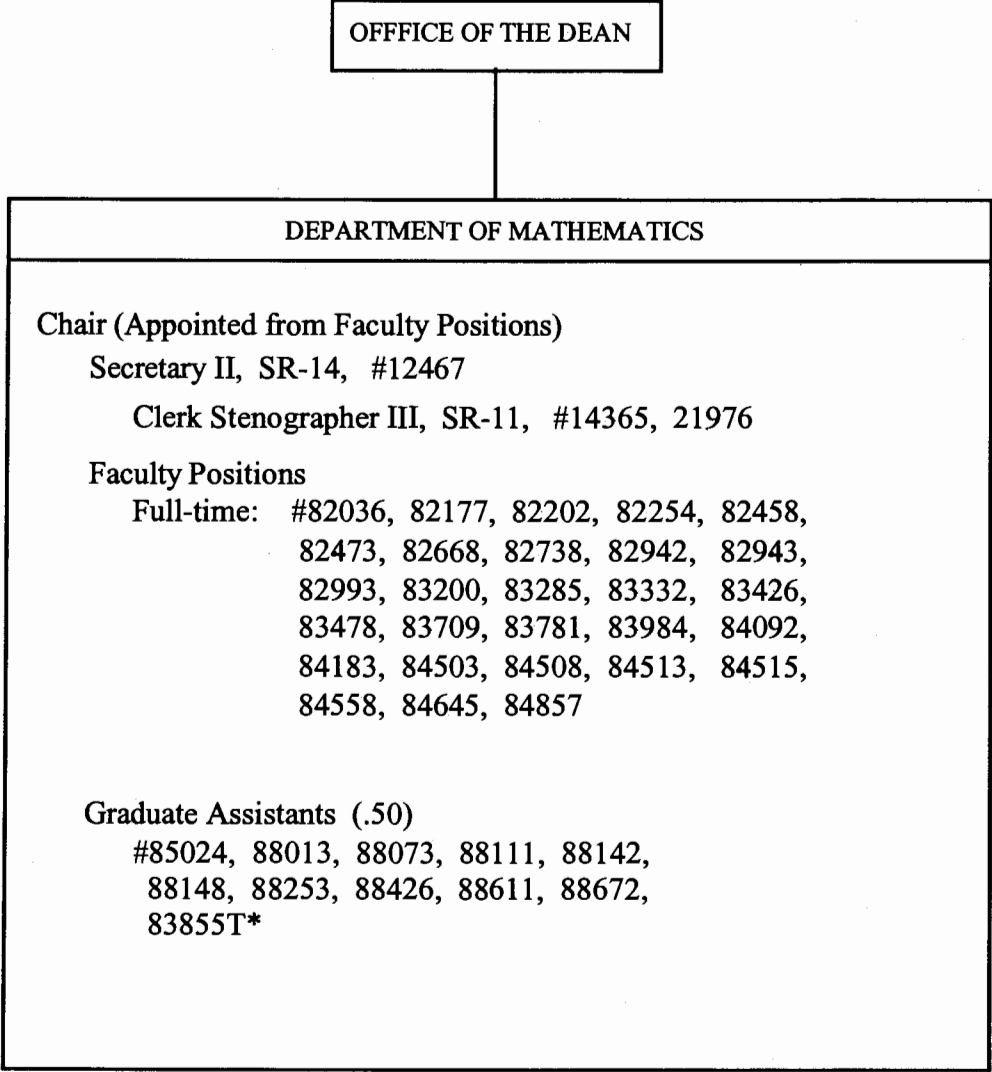
*Appropriated Temporary Positions

General Funds 36.50

CHART UPDATED
DATE JUL - 1 2003

UNIVERSITY OF HAWAII
UNIVERSITY OF HAWAII AT MANOA
COLLEGES OF ARTS AND SCIENCES
COLLEGE OF NATURAL SCIENCES
DEPARTMENT OF MATHEMATICS

POSITION ORGANIZATION CHART
CHART III-E

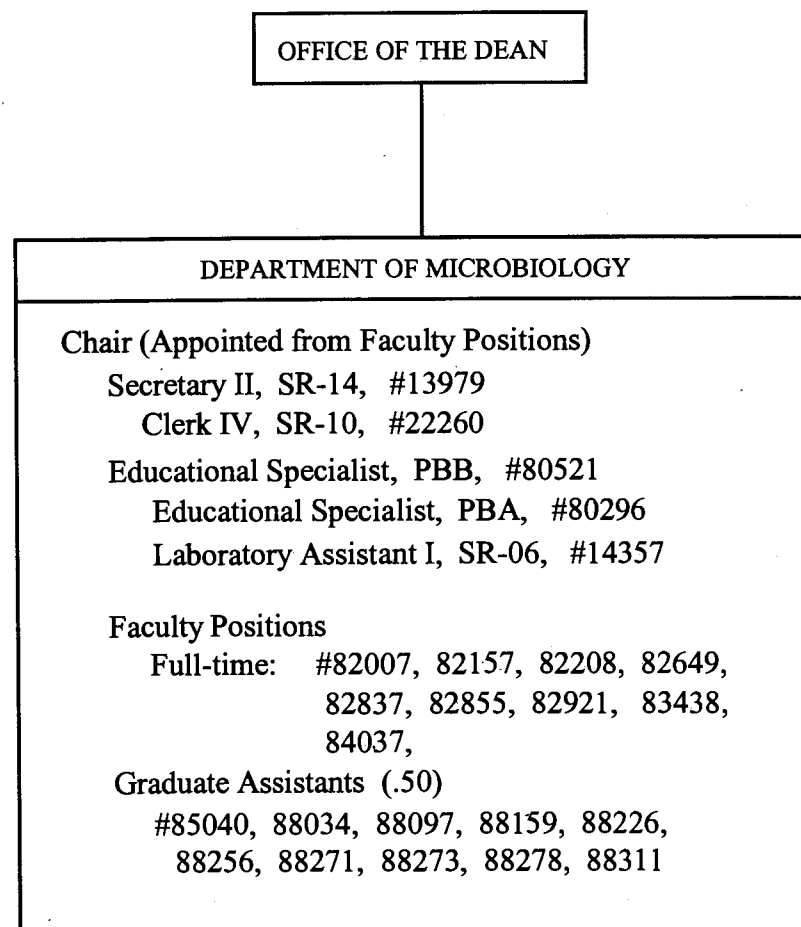


*Appropriated Temporary Positions

General Funds 36.50

CHART UPDATED
DATE JUL - 1 2003

UNIVERSITY OF HAWAII
UNIVERSITY OF HAWAII AT MANOA
COLLEGES OF ARTS AND SCIENCES
COLLEGE OF NATURAL SCIENCES
DEPARTMENT OF MICROBIOLOGY
POSITION ORGANIZATION CHART
CHART III-F



General Funds 19.00

CHART UPDATED
DATE JUL - 1 2003

UNIVERSITY OF HAWAII
UNIVERSITY OF HAWAII AT MANOA
COLLEGES OF ARTS AND SCIENCES
COLLEGE OF NATURAL SCIENCES

DEPARTMENT OF PHYSICS AND ASTRONOMY

POSITION ORGANIZATION CHART
CHART III-G

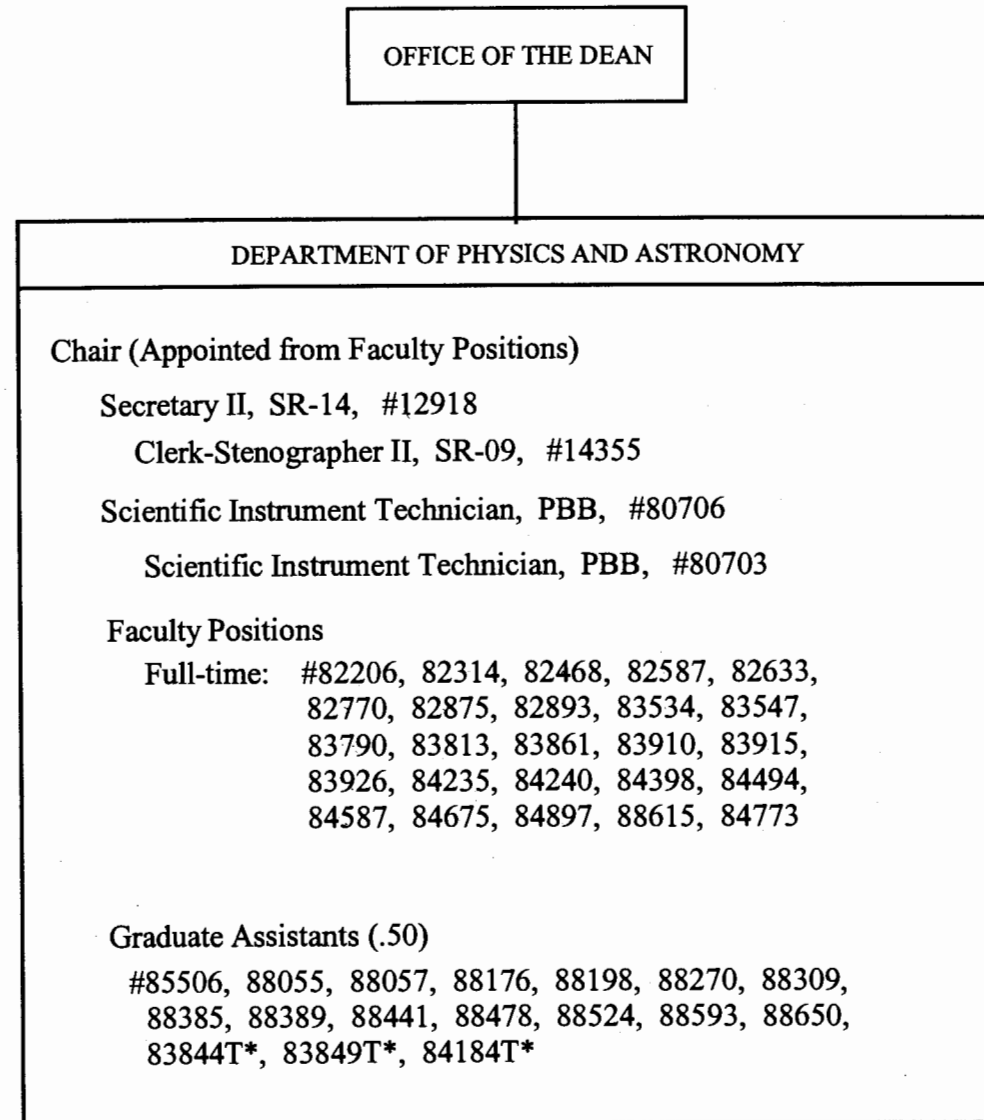


CHART UPDATED

DATE JUL - 1 2003

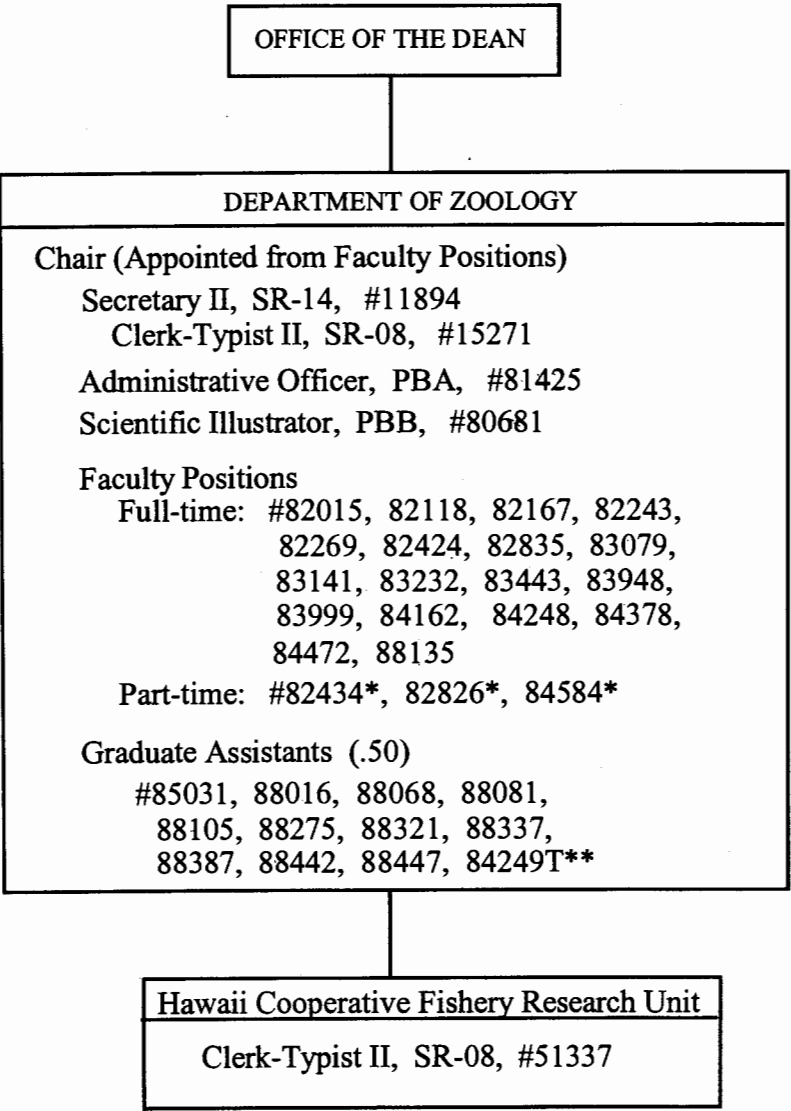
General Funds 37.50

*Appropriated Temporary Positions

UNIVERSITY OF HAWAII
UNIVERSITY OF HAWAII AT MANOA
COLLEGES OF ARTS AND SCIENCES
COLLEGE OF NATURAL SCIENCES

DEPARTMENT OF ZOOLOGY

POSITION ORGANIZATION CHART
CHART III-H



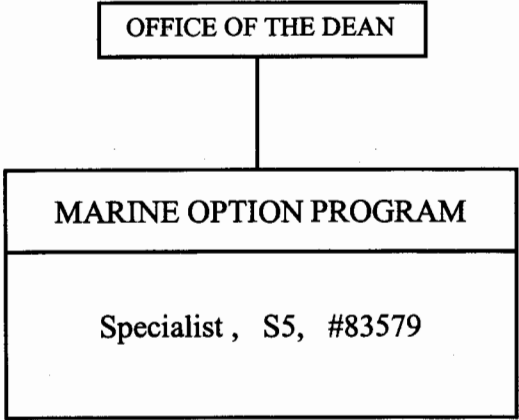
*Joint Appointments
**Appropriated Temporary Positions

CHART UPDATED
DATE JUL - 1 2003

UNIVERSITY OF HAWAII
UNIVERISTY OF HAWAII AT MANOA
COLLEGES OF ARTS AND SCIENCES
COLLEGE OF NATURAL SCIENCES

MARINE OPTION PROGRAM

POSITION ORGANIZATION CHART
CHART III-I



General Funds 1.00

CHART UPDATED
DATE JUL - 1 2003

STATE OF HAWAII

UNIVERSITY OF HAWAII
UNIVERSITY OF HAWAII AT MANOA
COLLEGES OF ARTS AND SCIENCES
COLLEGE OF NATURAL SCIENCES

OFFICE OF THE DEAN

HAROLD L. LYON ARBORETUM

Director, I-5, #86159
Secretary II, SR-14, #38683
Assistant Researcher, R-3, #82954
Research Associate, PBB, #81584
Research Associate, PBA, #80331
Educational Specialist, PBB, #81934
Agricultural Research Tech III, SR-11, #10081

General Funds 7.00

CHART UPDATED
DATE JUL - 1 2003