

STATE OF HAWAII
UNIVERSITY OF HAWAII
UNIVERSITY OF HAWAII AT MANOA
SCHOOL OF OCEAN AND EARTH
SCIENCE AND TECHNOLOGY

ORGANIZATION CHART

CHART XXXI

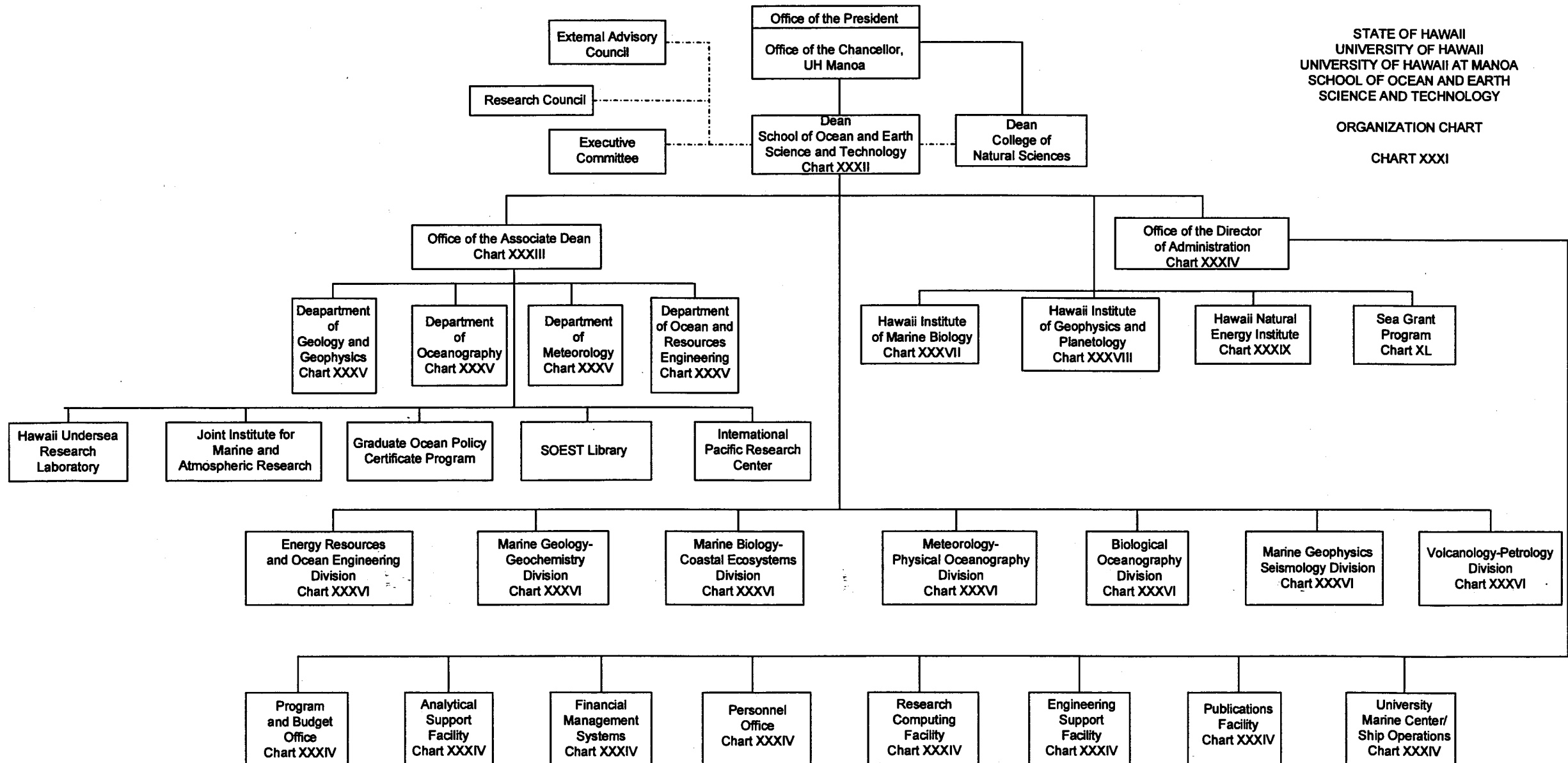


CHART UPDATED

DATE JUL - 1 2003

APPROVED:


C. Barry Raleigh, Dean 07-01-2003

STATE OF HAWAII
UNIVERSITY OF HAWAII
UNIVERSITY OF HAWAII AT MANOA
SCHOOL OF OCEAN AND EARTH
SCIENCE AND TECHNOLOGY

OFFICE OF THE DEAN
POSITION ORGANIZATION CHART

CHART XXXII

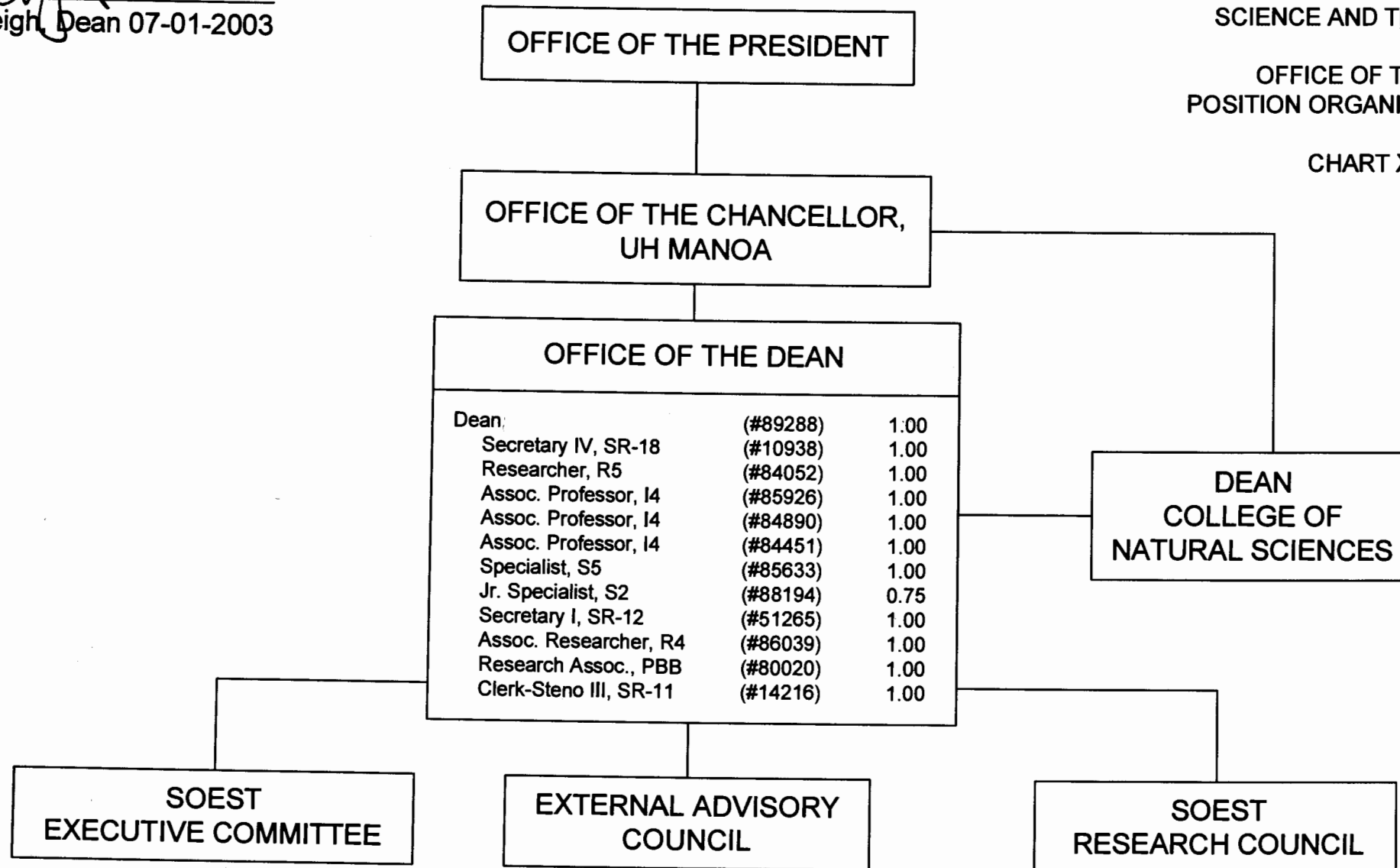
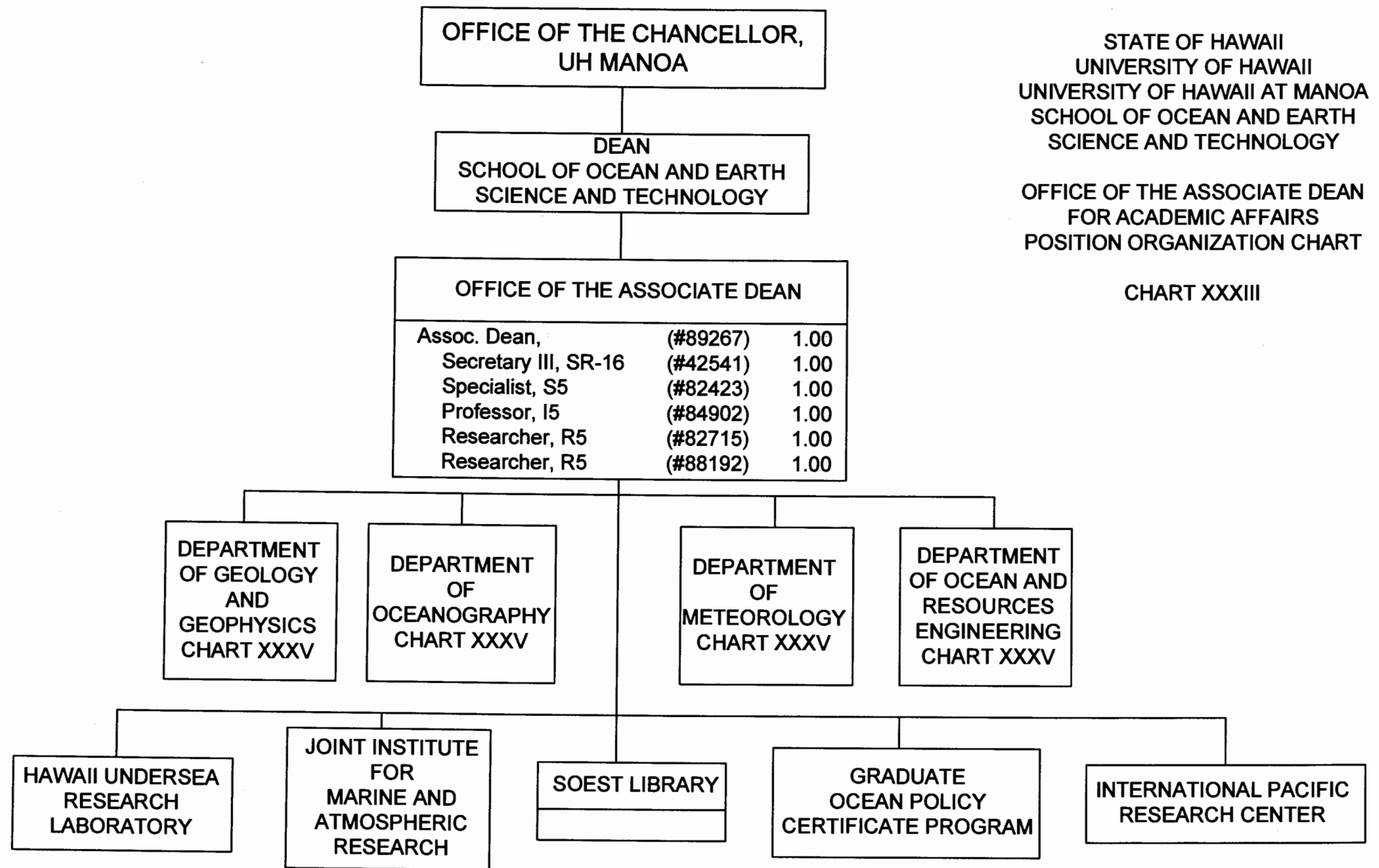


CHART UPDATED

DATE JUL - 1 2003



STATE OF HAWAII
UNIVERSITY OF HAWAII
UNIVERSITY OF HAWAII AT MANOA
SCHOOL OF OCEAN AND EARTH
SCIENCE AND TECHNOLOGY


OFFICE OF THE ASSOCIATE DEAN
FOR ACADEMIC AFFAIRS
POSITION ORGANIZATION CHART

CHART XXXIII

CHART UPDATED

DATE JUL - 1 2003

APPROVED:


C. Barry Raleigh, Dean 07-01-2003

DEAN
SCHOOL OF OCEAN AND EARTH
SCIENCE AND TECHNOLOGY

OFFICE OF
DIRECTOR OF ADMINISTRATION

Dir. of Admin. Services (#89291) 1.00

Secretary III, SR-16 (#44083) 1.00

PROGRAM AND BUDGET OFFICE

Admin. Off. IV, PBB** (#80199) 1.00
Fiscal Acctng.
Spec., PBA** (#80804) 1.00

ANALYTICAL SUPPORT FACILITY

Extramurally
Funded

PUBLICATIONS FACILITY

Res. Pubs. Mgr., PBB (#80098) 1.00
Graphic Artist, PBB (#80689) 1.00

PERSONNEL OFFICE

Personnel Off. PBB (#80943) 1.00
Personnel Off. PBA (#80769) 1.00
Personnel Off. PBA (#80562) 1.00

RESEARCH COMPUTER FACILITY

Extramurally
Funded

ENGINEERING SUPPORT FACILITY

Elec. Eng., PBC	(#80741)	0.50
Elec. Eng., PBB	(#80172)	0.50
Elec. Tech., PBB	(#80334)	0.50
Scien. Inst. Tech., PBB	(#80717)	1.00
Elec. Tech., PBB	(#80752)	1.00
Eng. Lab Tech., WB-13	(#15505)	1.00

FINANCIAL MANAGEMENT SYSTEMS OFFICE

Fis. Actng. Spec., PBB	(#81351)	1.00
Admin. Off., PBC	(#80207)	1.00
Admin. Off., PBB	(#81924)	1.00
Admin. Off., PBB	(#81804)	1.00
Admin. Off., PBB	(#80955)	1.00
Admin. Off., PBB	(#81825)	1.00
Admin. Off., PBB	(#80958)	1.00
Secretary I, SR-12	(#14354)	1.00

UNIVERSITY MARINE CENTER/
SHIP OPERATIONS

Extramurally
Funded


STATE OF HAWAII
UNIVERSITY OF HAWAII
UNIVERSITY OF HAWAII AT MANOA
SCHOOL OF OCEAN AND EARTH
SCIENCE AND TECHNOLOGY

OFFICE OF THE DIRECTOR
OF ADMINISTRATION
POSITION ORGANIZATION CHART
CHART XXXIV

** To be reclassified

CHART UPDATED
DATE JUL - 1 2003

APPROVED:


C. Barry Raleigh, Dean 07-01-2003

STATE OF HAWAII
UNIVERSITY OF HAWAII
UNIVERSITY OF HAWAII AT MANOA
SCHOOL OF OCEAN AND EARTH
SCIENCE AND TECHNOLOGY

DEPARTMENTS
POSITION ORGANIZATION CHART
CHART XXXV

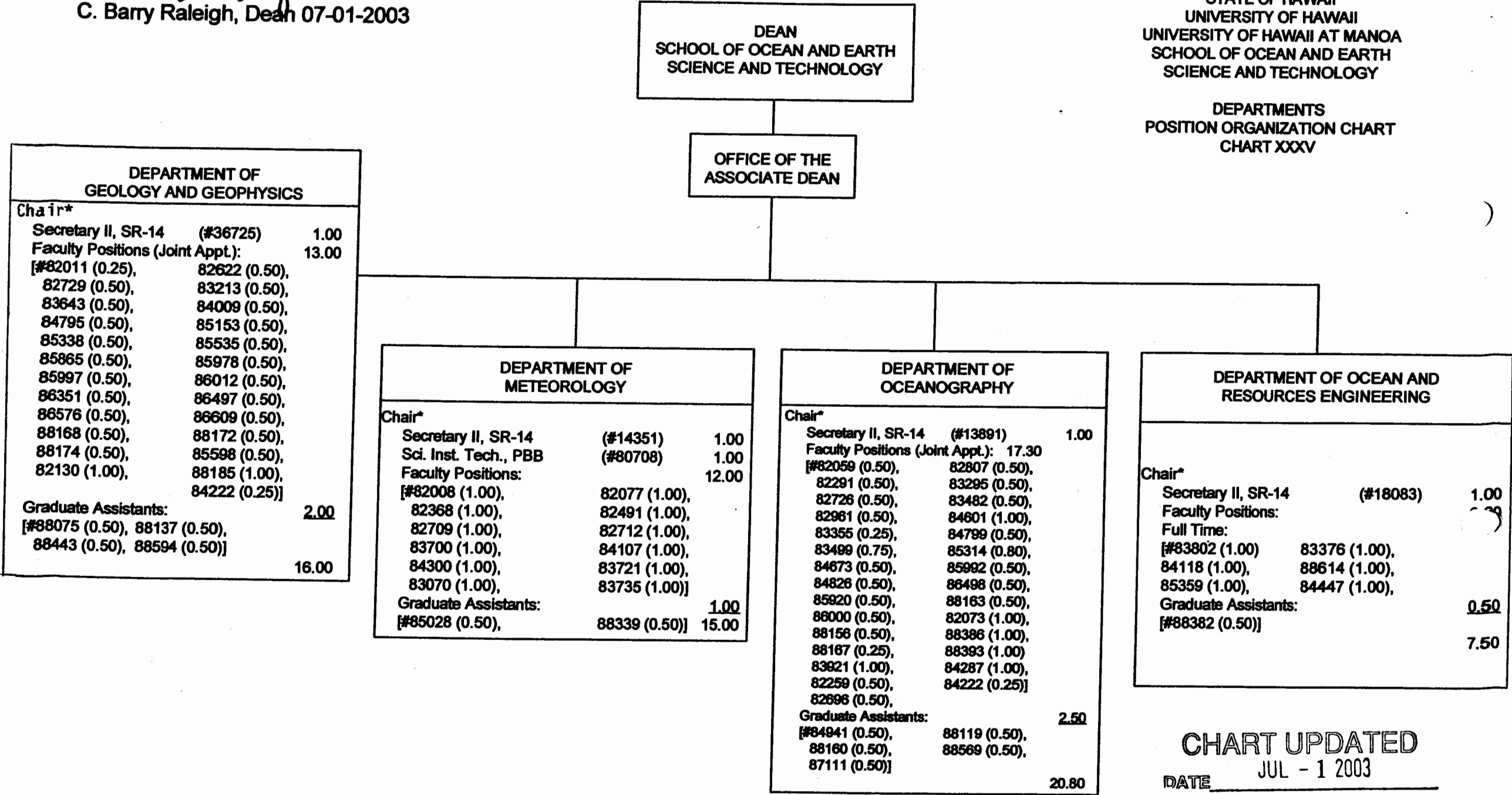
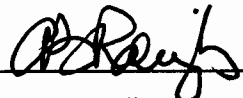


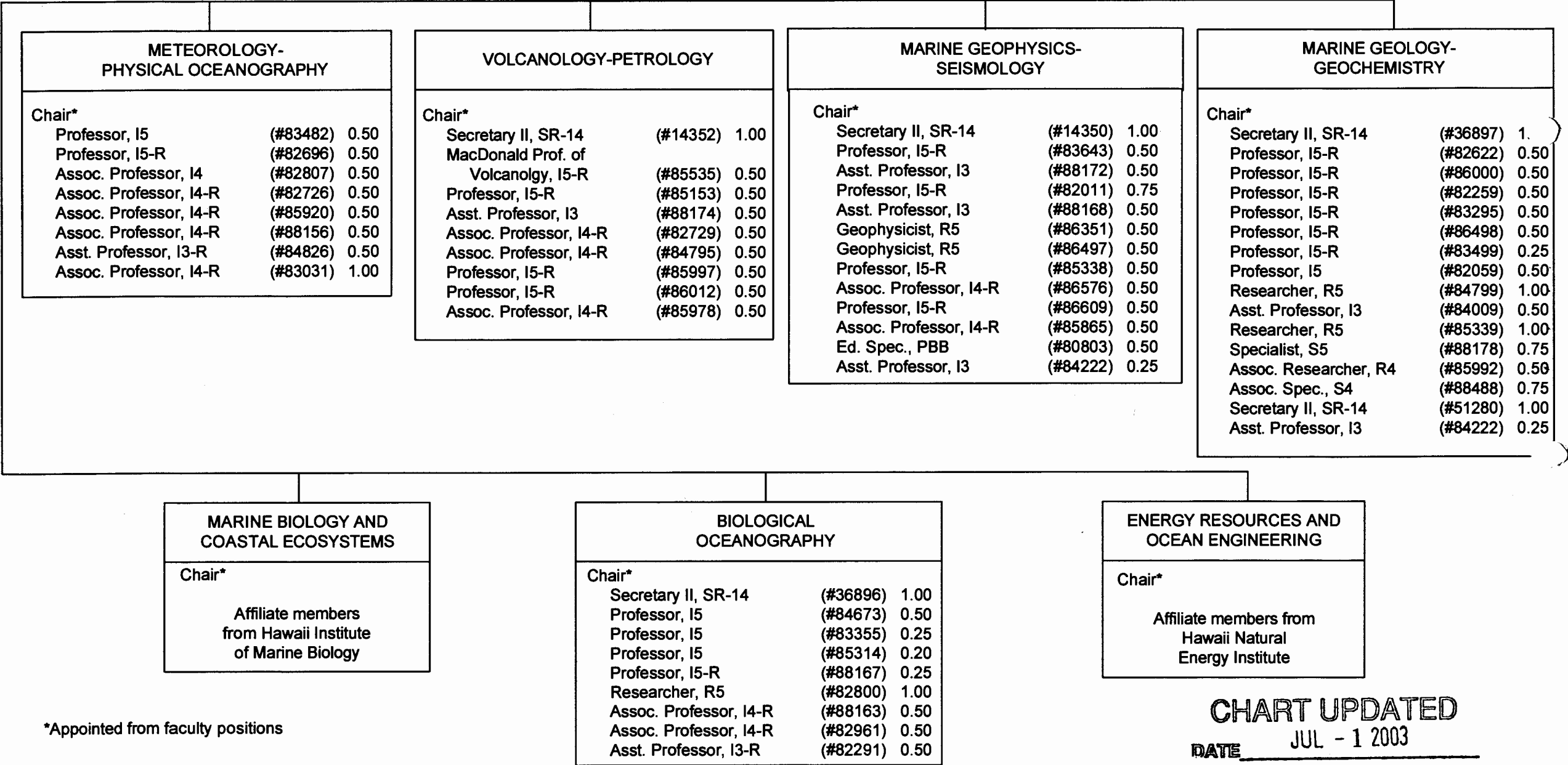
CHART UPDATED
JUL - 1 2003
DATE _____

APPROVED:


C. Barry Raleigh, Dean 07-01-2003

STATE OF HAWAII
UNIVERSITY OF HAWAII
UNIVERSITY OF HAWAII AT MANOA
SCHOOL OF OCEAN AND EARTH
SCIENCE AND TECHNOLOGY
RESEARCH DIVISIONS
POSITION ORGANIZATION CHART
CHART XXXVI

DEAN
SCHOOL OF OCEAN AND EARTH
SCIENCE AND TECHNOLOGY



*Appointed from faculty positions

CHART UPDATED
DATE JUL - 1 2003

STATE OF HAWAII
UNIVERSITY OF HAWAII
UNIVERSITY OF HAWAII AT MANOA
SCHOOL OF OCEAN AND EARTH
SCIENCE AND TECHNOLOGY

HAWAII INSTITUTE OF MARINE BIOLOGY
POSITION ORGANIZATION CHART

CHART XXXVII

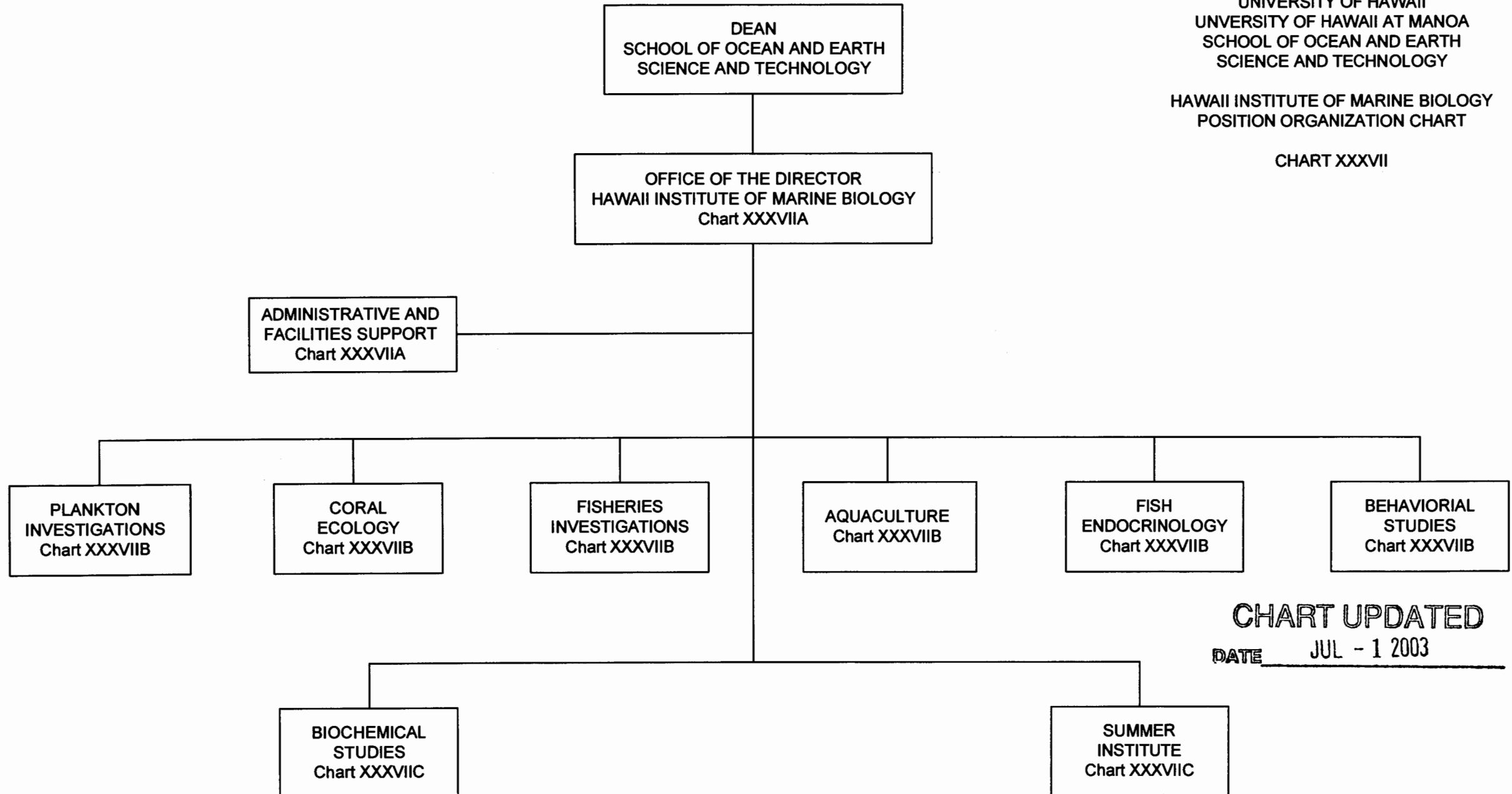



CHART UPDATED
DATE JUL - 1 2003

APPROVED:

C. Barry Raleigh, Dean 07-01-2003

STATE OF HAWAII
UNIVERSITY OF HAWAII
UNIVERSITY OF HAWAII AT MANOA
SCHOOL OF OCEAN AND EARTH
SCIENCE AND TECHNOLOGY
HAWAII INSTITUTE OF MARINE BIOLOGY
POSITION ORGANIZATION CHART
CHART XXXVIIA

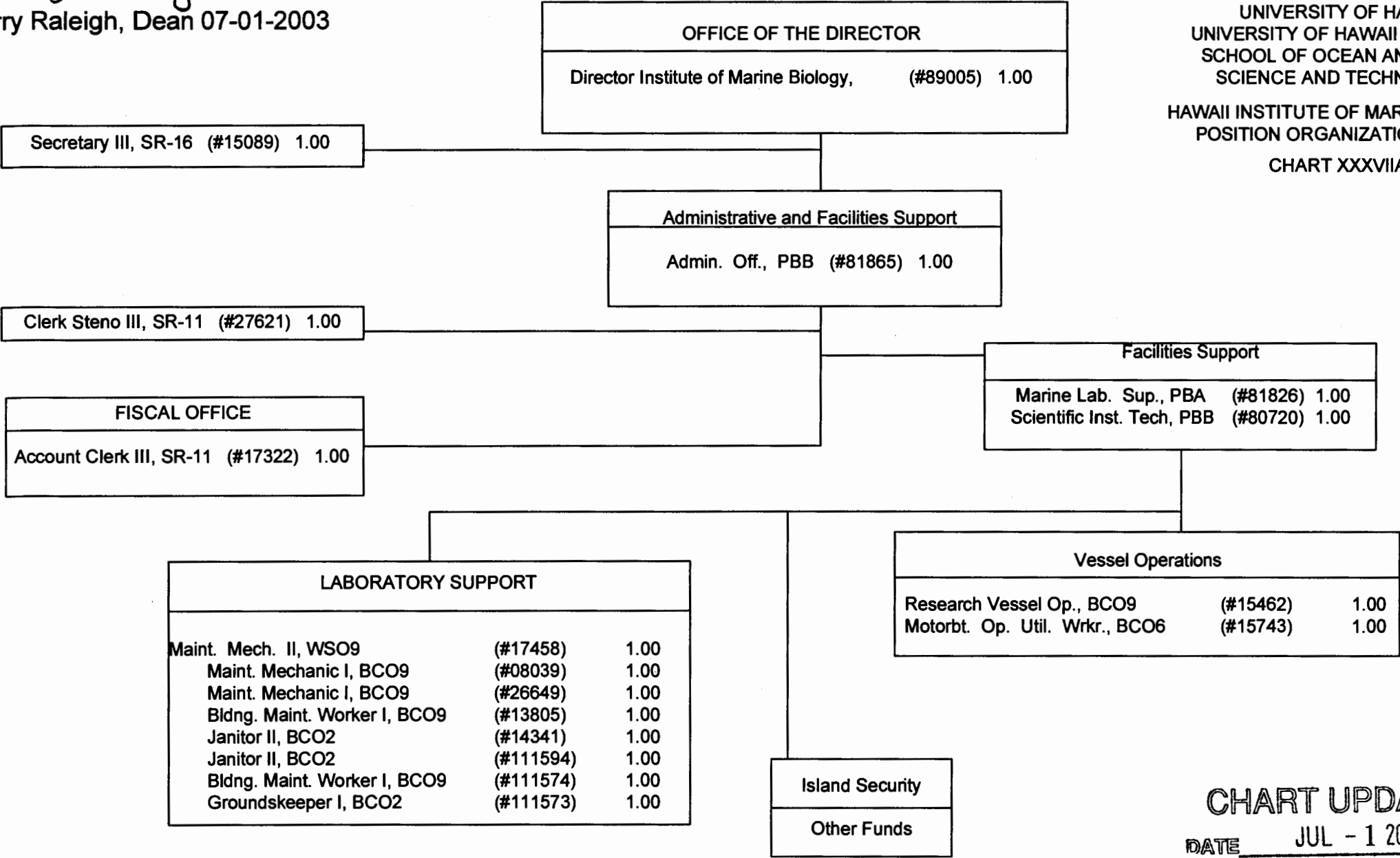


CHART UPDATED
DATE JUL - 1 2003

APPROVED:

C. Barry Raleigh
C. Barry Raleigh, Dean 07-01-2003

STATE OF HAWAII
UNIVERSITY OF HAWAII
UNIVERSITY OF HAWAII AT MANOA
SCHOOL OF OCEAN AND EARTH
SCIENCE AND TECHNOLOGY
HAWAII INSTITUTE OF MARINE BIOLOGY
POSITION ORGANIZATION CHART

CHART XXXVIIB

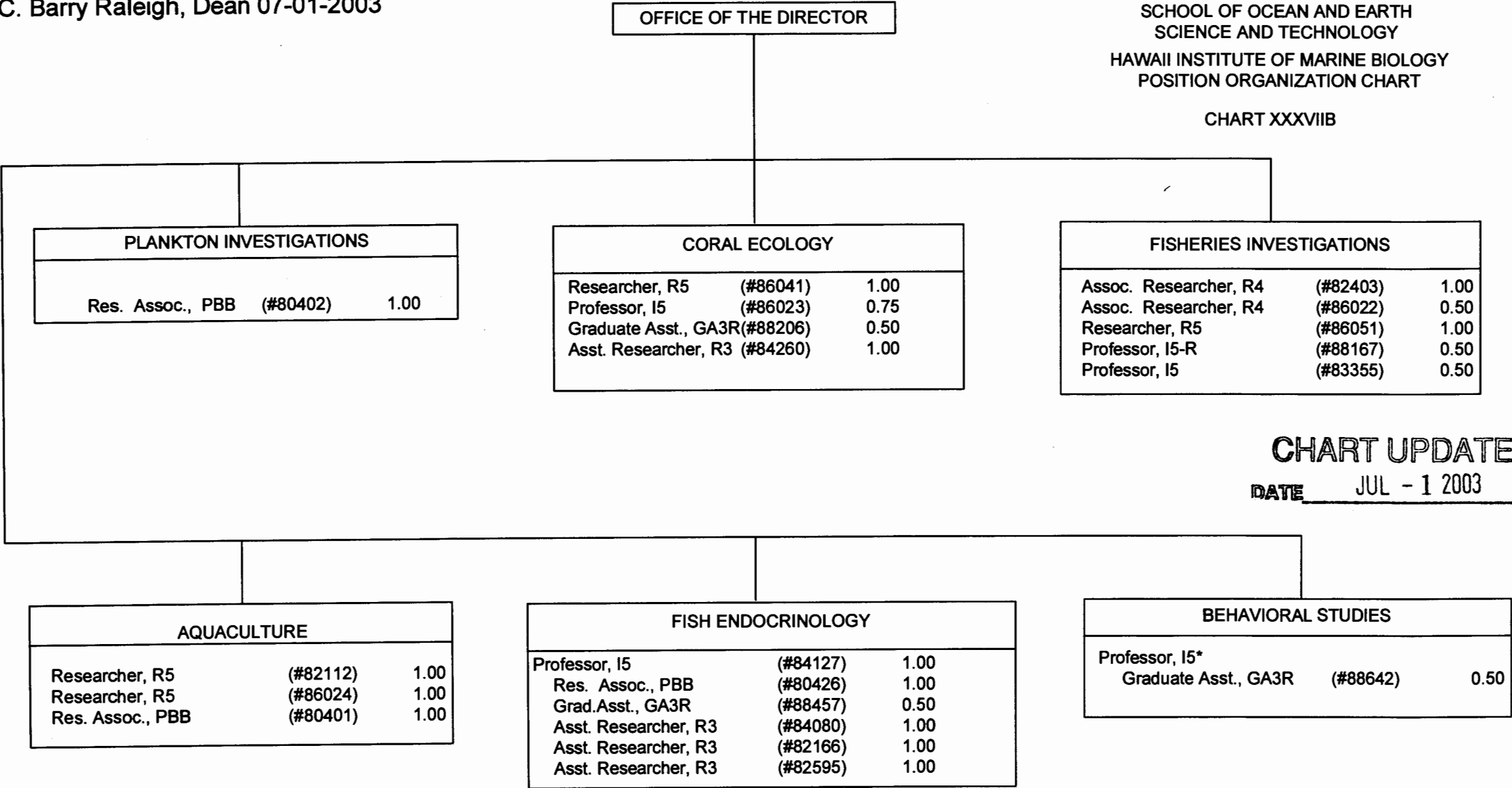


CHART UPDATED
DATE JUL - 1 2003

*Position from Zoology

STATE OF HAWAII
UNIVERSITY OF HAWAII
UNIVERSITY OF HAWAII AT MANOA
SCHOOL OF OCEAN AND EARTH
SCIENCE AND TECHNOLOGY

HAWAII INSTITUTE OF MARINE BIOLOGY
POSITION ORGANIZATION CHART

CHART XXXVIIC

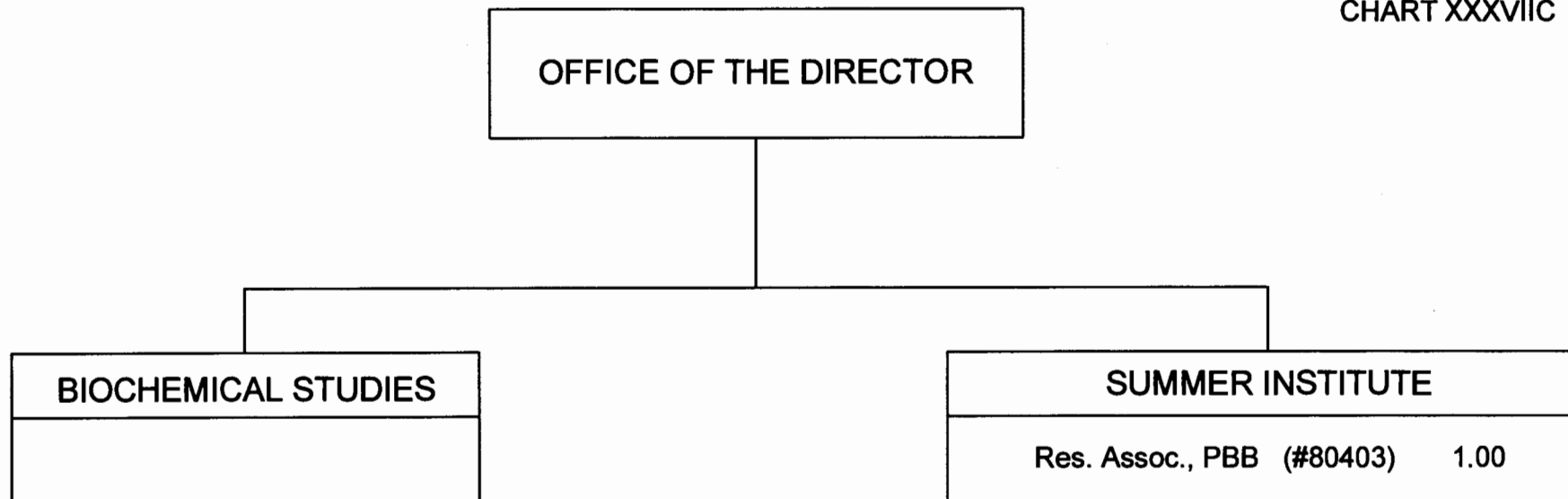



CHART UPDATED
DATE JUL - 1 2003

APPROVED:


C. Barry Raleigh, Dean 07-01-2003

STATE OF HAWAII
UNIVERSITY OF HAWAII
UNIVERSITY OF HAWAII AT MANOA
SCHOOL OF OCEAN AND EARTH
SCIENCE AND TECHNOLOGY

HAWAII INSTITUTE OF GEOPHYSICS
AND PLANETOLOGY
POSITION ORGANIZATION CHART
CHART XXXVIII

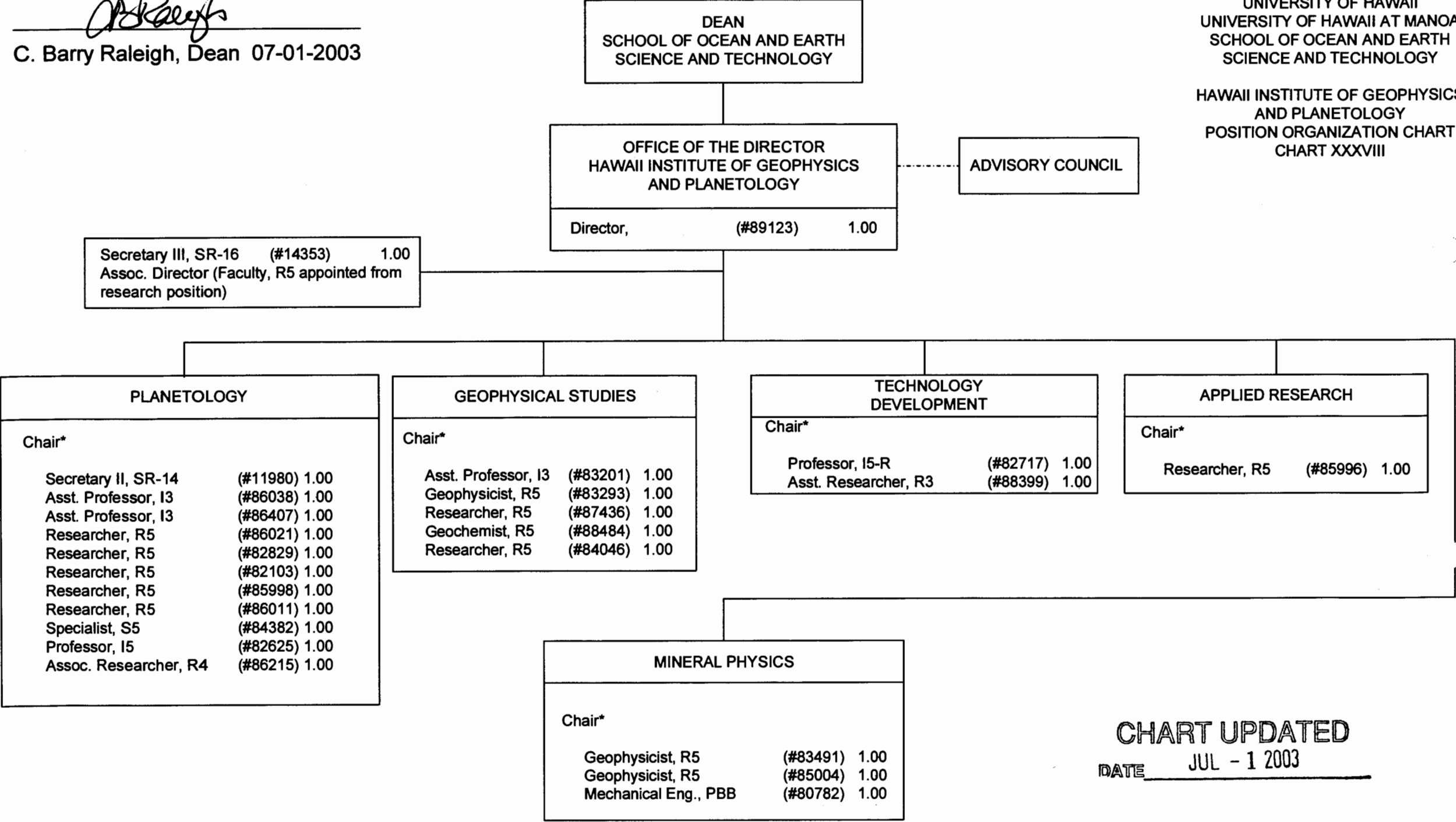


CHART UPDATED
DATE JUL - 1 2003

APPROVED: C. Barry Raleigh, Dean 07-01-03

STATE OF HAWAII
UNIVERSITY OF HAWAII
UNIVERSITY OF HAWAII AT MANOA
SCHOOL OF OCEAN AND EARTH SCIENCE AND TECHNOLOGY
HAWAII NATURAL ENERGY INSTITUTE

POSITION ORGANIZATION CHART

CHART XXXIX

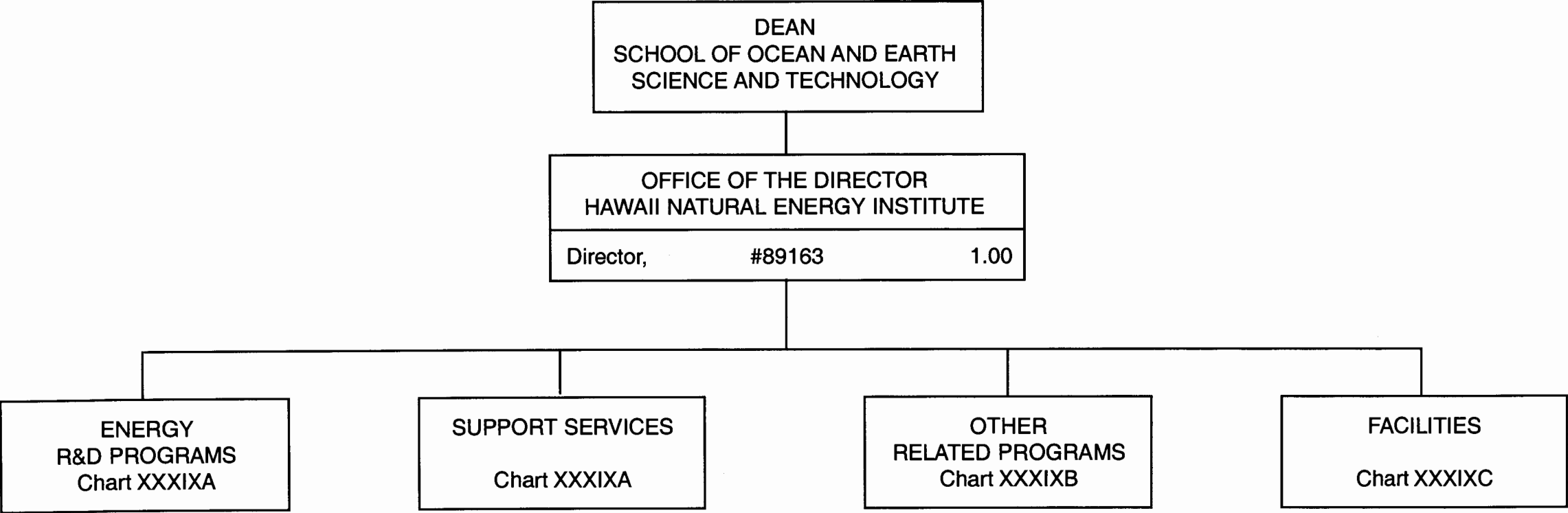


CHART UPDATED
DATE JUL - 1 2003

APPROVED:


C. Barry Raleigh, Dean 07-01-03

STATE OF HAWAII
UNIVERSITY OF HAWAII
UNIVERSITY OF HAWAII AT MANOA
SCHOOL OF OCEAN AND EARTH SCIENCE AND TECHNOLOGY
HAWAII NATURAL ENERGY INSTITUTE

POSITION ORGANIZATION CHART

CHART XXXIXA

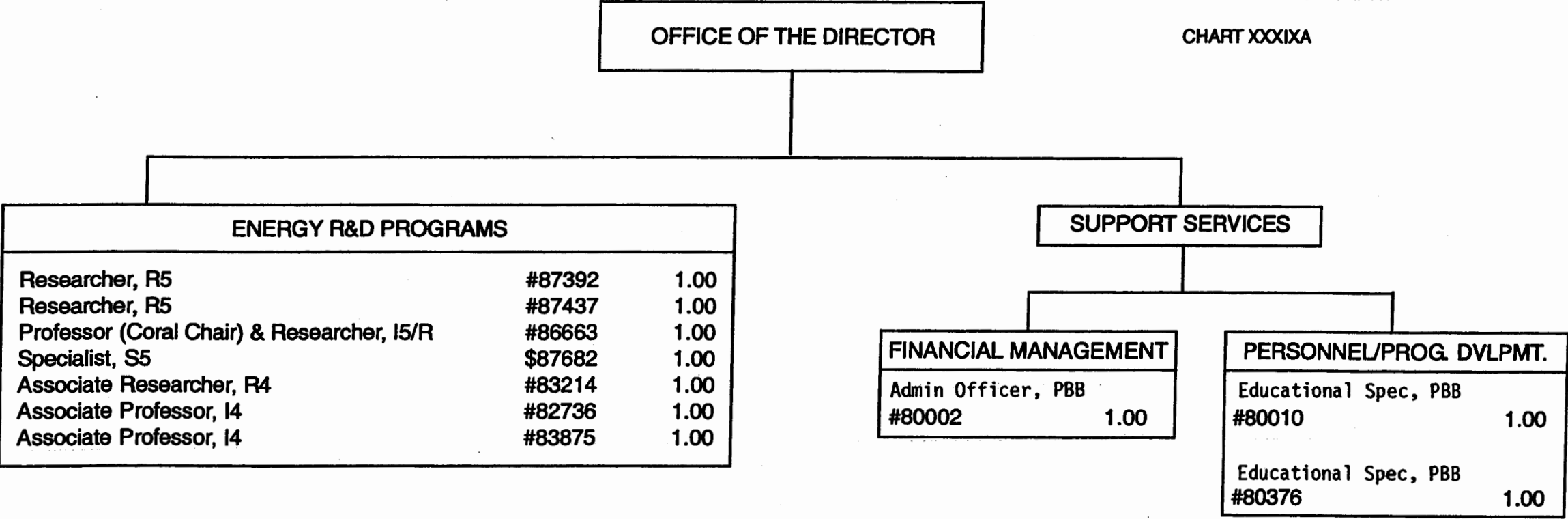


CHART UPDATED

DATE JUL - 1 2003

APPROVED:


C. Barry Raleigh, Dean 07-01-03

STATE OF HAWAII
UNIVERSITY OF HAWAII
UNIVERSITY OF HAWAII AT MANOA
SCHOOL OF OCEAN AND EARTH SCIENCE AND TECHNOLOGY
HAWAII NATURAL ENERGY INSTITUTE

POSITION ORGANIZATION CHART

CHART XXXIXB

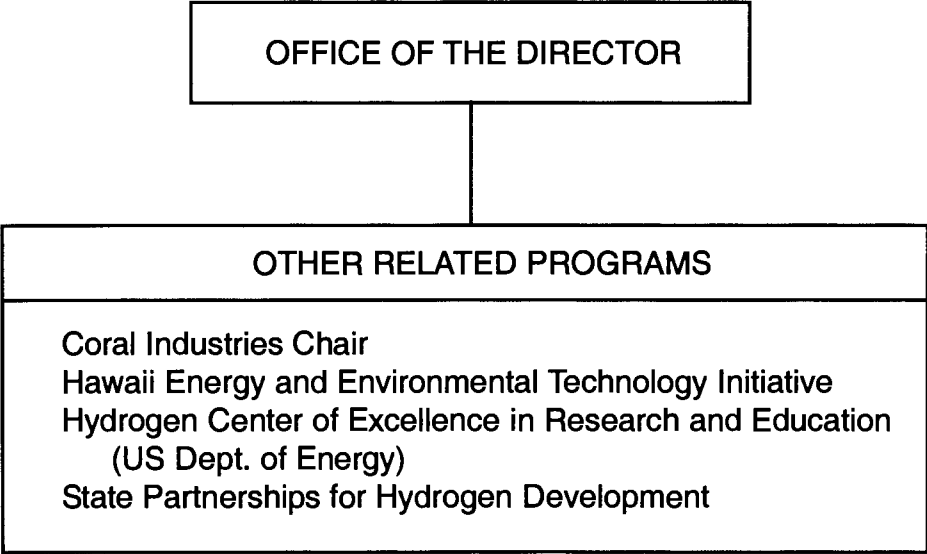


CHART UPDATED

DATE JUL - 1 2003

APPROVED:


C. Barry Raleigh, Dean 07-01-03

STATE OF HAWAII
UNIVERSITY OF HAWAII
UNIVERSITY OF HAWAII AT MANOA
SCHOOL OF OCEAN AND EARTH SCIENCE AND TECHNOLOGY
HAWAII NATURAL ENERGY INSTITUTE

POSITION ORGANIZATION CHART

CHART XXXIXC

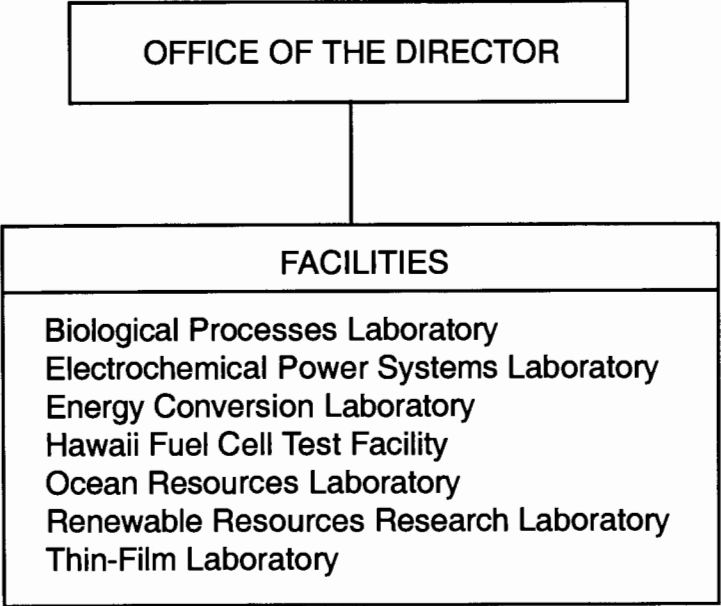


CHART UPDATED

DATE JUL - 1 2003

STATE OF HAWAII
UNIVERSITY OF HAWAII
UNIVERSITY OF HAWAII AT MANOA
SCHOOL OF OCEAN AND EARTH
SCIENCE AND TECHNOLOGY

SEA GRANT COLLEGE PROGRAM
ORGANIZATION CHART

CHART XL

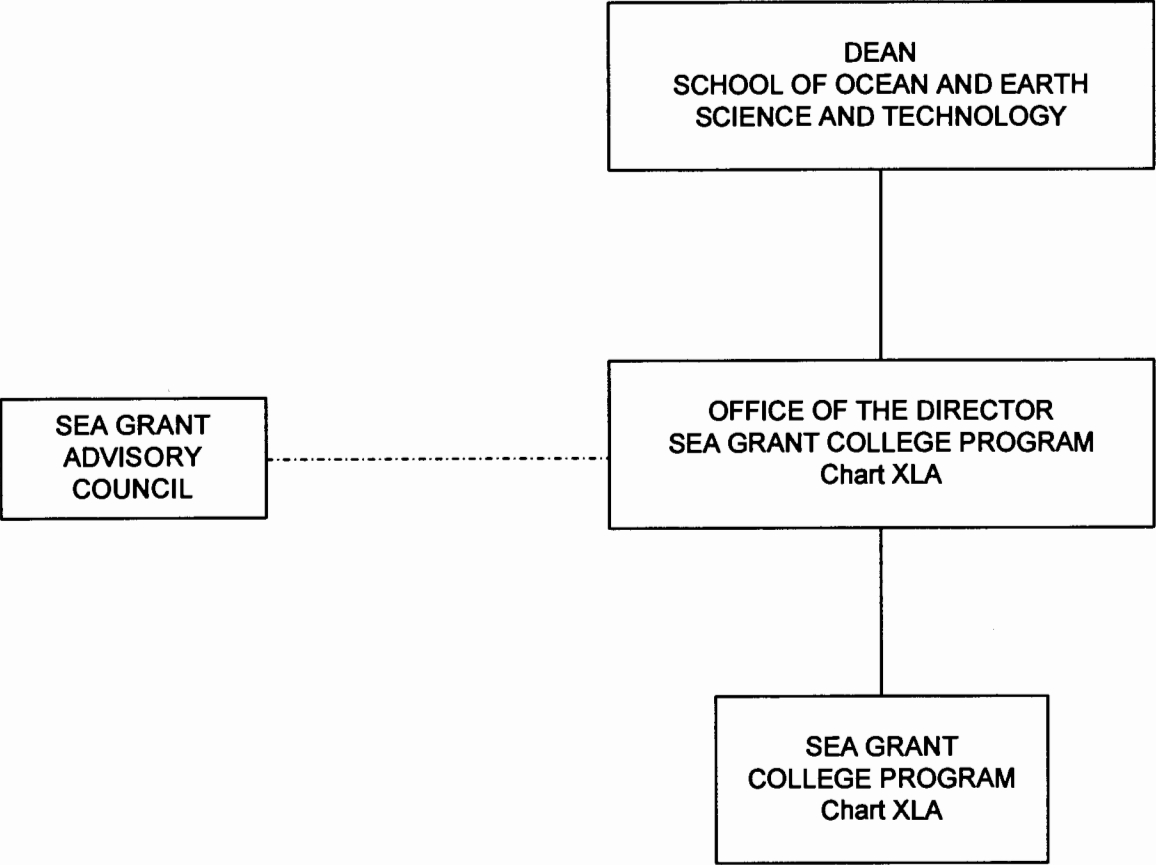


CHART UPDATED

DATE JUL - 1 2003

STATE OF HAWAII
UNIVERSITY OF HAWAII
UNIVERSITY OF HAWAII AT MANOA
SCHOOL OF OCEAN AND EARTH
SCIENCE AND TECHNOLOGY

SEA GRANT COLLEGE PROGRAM
ORGANIZATION CHART

CHART XLA

OFFICE OF THE DIRECTOR SEA GRANT COLLEGE PROGRAM
Director(Faculty Appointment)

SEA GRANT ADVISORY COUNCIL

Secretary II, SR-14	(#23516)	1.00
Specialist & Assoc. Dir., S5	(#87923)	1.00
Admin. Officer, PBB	(#80840)	1.00

CHART UPDATED
DATE JUL - 1 2003

MARINE RESEARCH
Extramurally Funded

MARINE ADVISORY PROGRAM		
Assoc. Spec., S4	(#86334)	1.00
Asst. Exten. Agent, A3	(#88464)	1.00

MARINE EDUCATION AND TRAINING
Extramurally Funded

PUBLICATIONS
Extramurally Funded