

OFFICE OF THE
CHANCELLOR
UNIVERSITY OF HAWAII, MANOA

STATE OF HAWAII
UNIVERSITY OF HAWAII
UNIVERSITY OF HAWAII AT MANOA
COLLEGES OF ARTS AND SCIENCES
COLLEGE OF SOCIAL SCIENCES

CHART I

OFFICE OF THE DEAN
CHART II

SOCIAL SCIENCE RESEARCH INSTITUTE
CHART IIA

ANTHROPOLOGY
CHART III-a

SCHOOL OF
COMMUNICATIONS
CHART III-b

ECONOMICS
CHART III-c

ETHNIC STUDIES
CHART III-d

GEOGRAPHY
CHART III-e

POLITICAL SCIENCE
CHART III-f

POPULATION STUDIES
CHART III-g

PSYCHOLOGY
CHART III-h

PUBLIC ADMINISTRATION
CHART III-i


SOCIOLOGY
CHART III-j

URBAN AND REGIONAL PLANNING
CHART III-k

WOMEN'S STUDIES
CHART III-l

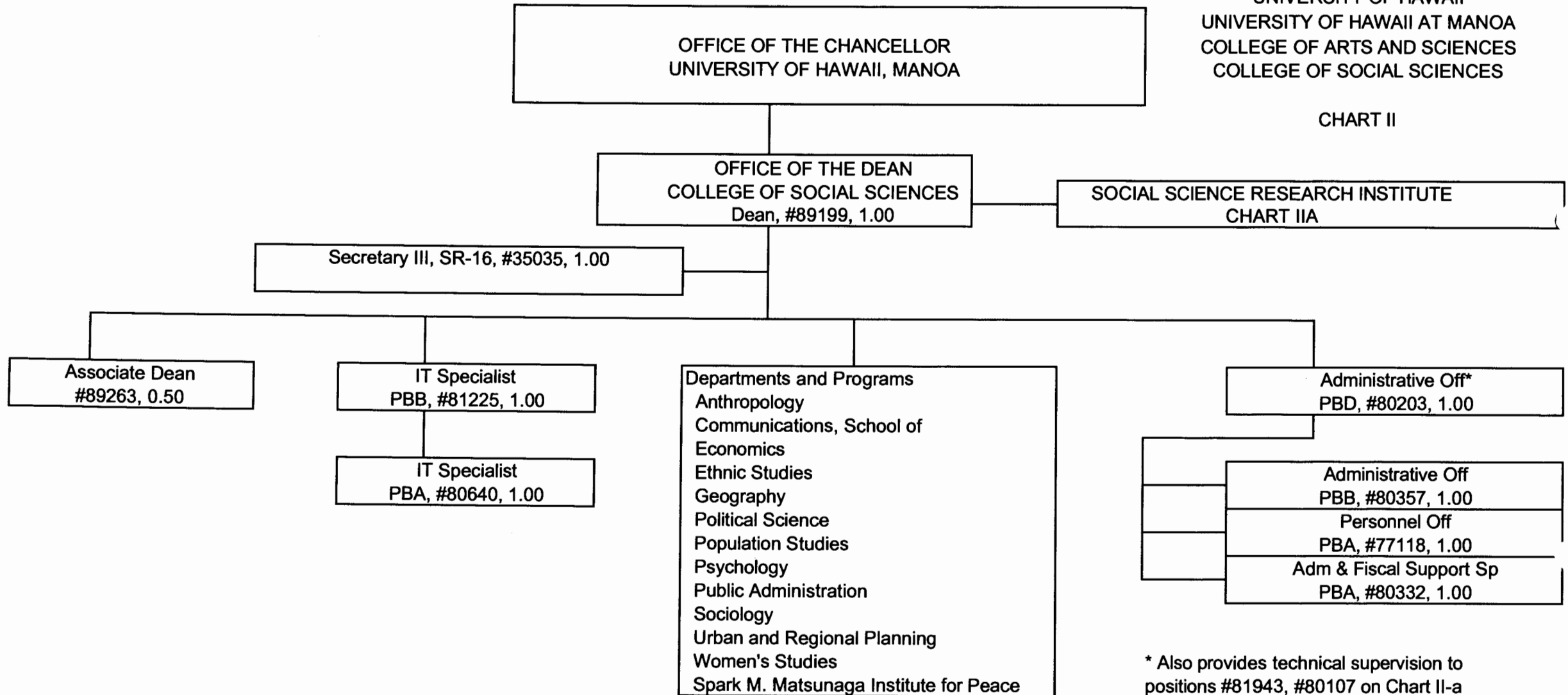
S.M. MATSUNAGA INSTITUTE FOR PEACE
CHART III-m

CHART UPDATED
DATE JUL - 1 2003

Approved:

Richard Dubanoski, Dean
College of Social Sciences

STATE OF HAWAII
UNIVERSITY OF HAWAII
UNIVERSITY OF HAWAII AT MANOA
COLLEGE OF ARTS AND SCIENCES
COLLEGE OF SOCIAL SCIENCES

CHART II



* Also provides technical supervision to positions #81943, #80107 on Chart II-a

Approved:

Richard Dubanoski

Richard Dubanoski, Dean
College of Social Sciences

General Funds

8.50

CHART UPDATED

DATE JUL - 1 2003

STATE OF HAWAII
UNIVERSITY OF HAWAII
UNIVERSITY OF HAWAII, MANOA
COLLEGE OF SOCIAL SCIENCES
SOCIAL SCIENCE RESEARCH INSTITUTE

CHART II-a

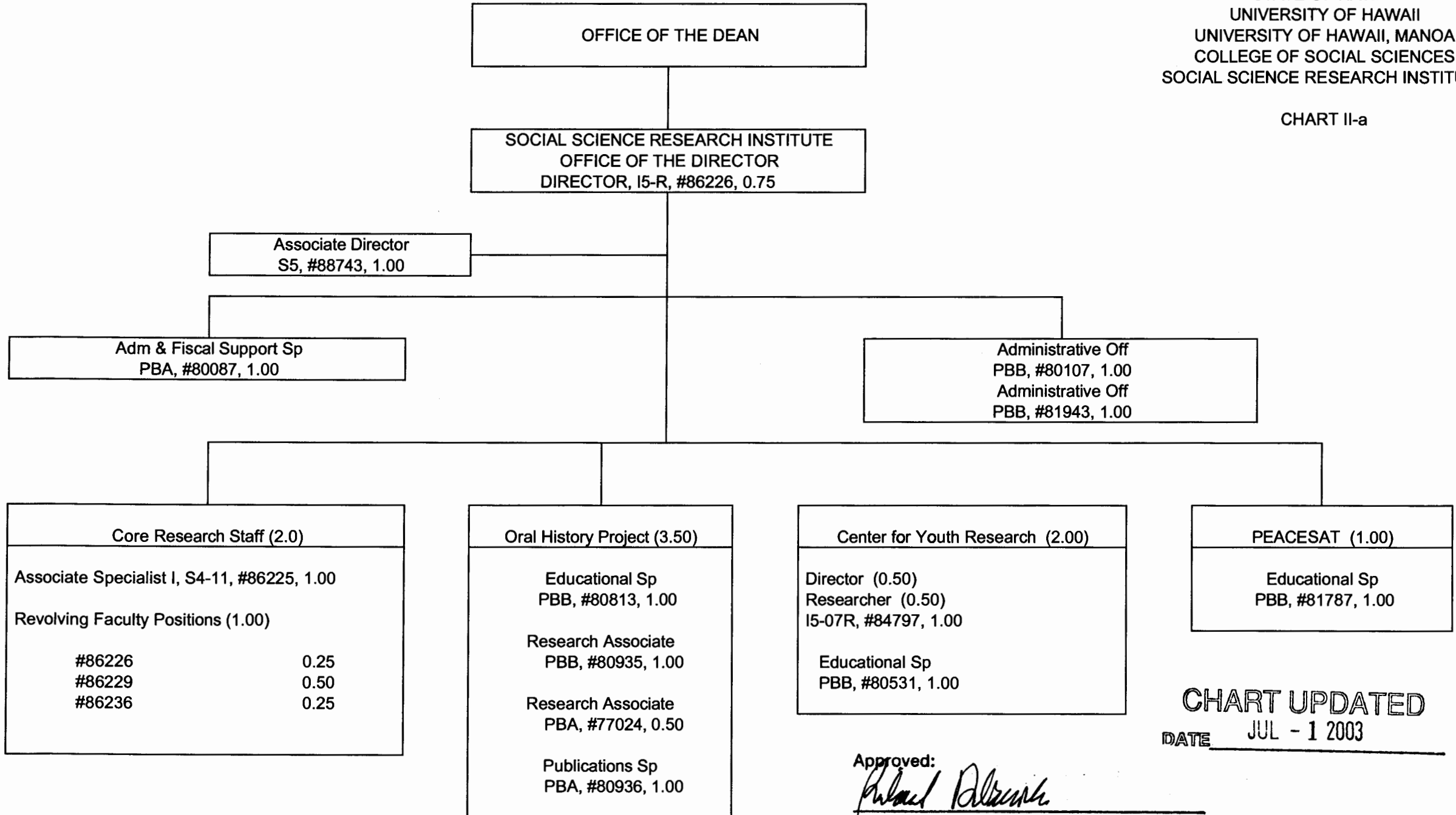


CHART UPDATED
DATE JUL - 1 2003

Approved:

Richard Dubanoski

Richard Dubanoski, Dean
College of Social Sciences

General Funds 13.25

OFFICE OF THE DEAN

STATE OF HAWAII
UNIVERSITY OF HAWAII
UNIVERSITY OF HAWAII AT MANOA
COLLEGES OF ARTS AND SCIENCES
COLLEGE OF SOCIAL SCIENCES
DEPARTMENT OF ANTHROPOLOGY


POSITION ORGANIZATION CHART

CHART III-a

DEPARTMENT OF ANTHROPOLOGY					
Chair (appointed from faculty positions)					
Secretary II, SR-14, #13482					1.00
Student Services Sp, PBB, #80639					1.00
Educational Sp, PBB, #81746					1.00
Faculty Positions:					17.00
<u>Full time:</u> #82188, 82195, 82534, 82638, 82779, 82797, 83004, 83358, 83405, 83574, 83720, 83756, 83924, 84206, 84399, 85082					
<u>Part time:</u> #84921 (.50), #88154 (.50)					
Graduate Assistants:					3.00
#83831, 83275, 88064, 88367 88529, 88591					
					----- 23.00

CHART UPDATED
DATE JUL - 1 2003

Approved:



Richard Dubanoski, Dean
College of Social Sciences

General Funds 23.00

OFFICE OF THE DEAN

STATE OF HAWAII
UNIVERSITY OF HAWAII
UNIVERSITY OF HAWAII AT MANOA
COLLEGES OF ARTS AND SCIENCES
COLLEGE OF SOCIAL SCIENCES
DEPARTMENT OF COMMUNICATIONS

POSITION ORGANIZATION CHART

CHART III-b

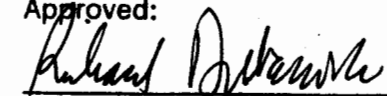
SCHOOL OF COMMUNICATIONS					
Chair (appointed from faculty positions)					
Secretary II, SR-14, #13807					1.00
Clerk-Typist II, SR-08, #48445					1.00
Educational Sp, PBB, #83164					1.00
Faculty Positions:					17.00
<u>Full time:</u>	#82279,	82280,	82500,	82602,	82611,
	82871,	82905,	82946,	82982,	83302,
	84115,	84217,	84478,	84505,	84792,
	88169,	88619			
Graduate Assistants:					3.50
	#85507,	88210,	88506,	88534,	88581
	88607,	88681			

					23.50

CHART UPDATED

DATE JUL - 1 2003

Approved:



Richard Dubanoski, Dean
College of Social Sciences

General Funds 23.50

OFFICE OF THE DEAN

STATE OF HAWAII
UNIVERSITY OF HAWAII
UNIVERSITY OF HAWAII AT MANOA
COLLEGES OF ARTS AND SCIENCES
COLLEGE OF SOCIAL SCIENCES
DEPARTMENT OF ECONOMICS


POSITION ORGANIZATION CHART

CHART III-c

DEPARTMENT OF ECONOMICS					
Chair (appointed from faculty positions)					
Secretary II, SR-14, #14362					1.00
Clerk-Stenographer III, SR-11, #14360					1.00
Faculty Positions:					17.00
Full time:	#82192,	82286,	82679,	82777,	82838,
	83023,	83411,	83484,	83611,	83748,
	83943,	84047,	84054,	84643,	84815,
	85027				
Part time:	#83650 (.50), 84810 (.50)				
Graduate Assistants:					4.50
	#88061,	88175,	88193,	88233,	88248
	88262,	88420,	88517,	88631	
					23.50

CHART UPDATED
DATE JUL - 1 2003

Approved:



Richard Dubanoski, Dean
College of Social Sciences

General Funds 23.50

OFFICE OF THE DEAN

STATE OF HAWAII
UNIVERSITY OF HAWAII
UNIVERSITY OF HAWAII AT MANOA
COLLEGES OF ARTS AND SCIENCES
COLLEGE OF SOCIAL SCIENCES
DEPARTMENT OF ETHNIC STUDIES

POSITION ORGANIZATION CHART


CHART III-d

DEPARTMENT OF ETHNIC STUDIES					
Chair (appointed from faculty positions)					
Secretary II, SR-14, #24006					1.00
Faculty Positions:					
<u>Full time:</u>	#83195,	84790,	84801,	84803, 84805,	7.50
	84813,	85586			
<u>Part time:</u>	#84807 (.50)				
				-----	8.50

CHART UPDATED

DATE JUL - 1 2003

Approved:



Richard Dubanoski, Dean
College of Social Sciences

General Funds 8.50

OFFICE OF THE DEAN

STATE OF HAWAII
UNIVERSITY OF HAWAII
UNIVERSITY OF HAWAII AT MANOA
COLLEGES OF ARTS AND SCIENCES
COLLEGE OF SOCIAL SCIENCES
DEPARTMENT OF GEOGRAPHY

POSITION ORGANIZATION CHART

CHART III-e

CHART UPDATED

DATE JUL - 1 2003

Approved:

Richard Dubanoski, Dean
College of Social Sciences

General Funds 24.50

DEPARTMENT OF GEOGRAPHY

Chair (appointed from faculty positions)

Secretary II, SR-14, #14358 1.00

Clerk-Stenographer II, SR-09, #18580 1.00

Educational Sp, PBB, #80641 1.00

Faculty Positions: 15.50

Full time: #82328, 82332, 82680, 82681, 82708,
83935, 84209, 84254, 84518, 84565,
84791, 84841, 84868 84917, 85298

Part time: #82338 (.50)

Graduate Assistants: 6.00

#88065, 88103, 88110, 88140, 88189
88217, 88232, 88391, 88416, 88446
84864, 88620

24.50

OFFICE OF THE DEAN

STATE OF HAWAII
UNIVERSITY OF HAWAII
UNIVERSITY OF HAWAII AT MANOA
COLLEGES OF ARTS AND SCIENCES
COLLEGE OF SOCIAL SCIENCES
DEPARTMENT OF POLITICAL SCIENCE

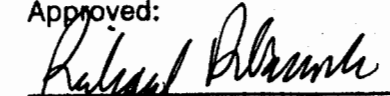
POSITION ORGANIZATION CHART

CHART III-f

CHART UPDATED

DATE JUL - 1 2003

Approved:



Richard Dubanoski, Dean
College of Social Sciences

DEPARTMENT OF POLITICAL SCIENCE

Chair (appointed from faculty positions)

Secretary II, SR-14, #11112 1.00

Clerk-Stenographer II, SR-09, #14363 1.00

Clerk-Stenographer II, SR-09, #21775 1.00

Faculty Positions: 22.50

Full time: #82145, 82278, 82317, 82913, 83085,
83194, 83311, 83370, 83621, 83753,
83778, 83858, 84023, 84042, 84059,
84109, 84130, 84234, 84556, 84800,
84812

Part time: #82823 (.50), 83277 (.50), 88549 (.50)

Graduate Assistants: 3.50

#88076, 88090, 88238, 88336, 88407
88676, 84880

29.00

General Funds 29.00

OFFICE OF THE DEAN

STATE OF HAWAII
UNIVERSITY OF HAWAII
UNIVERSITY OF HAWAII AT MANOA
COLLEGES OF ARTS AND SCIENCES
COLLEGE OF SOCIAL SCIENCES
POPULATION STUDIES PROGRAM

POSITION ORGANIZATION CHART

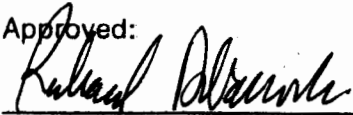
CHART III-g

POPULATION STUDIES PROGRAM		
Director (appointed from faculty positions)		0.00
Faculty Position		0.50
<u>Part Time:</u> #84816 (.50)		

		0.50

CHART UPDATED

DATE JUL - 1 2003

Approved: 
Richard Dubanoski, Dean
College of Social Sciences

General Funds 0.50

OFFICE OF THE DEAN

STATE OF HAWAII
UNIVERSITY OF HAWAII
UNIVERSITY OF HAWAII AT MANOA
COLLEGES OF ARTS AND SCIENCES
COLLEGE OF SOCIAL SCIENCES
DEPARTMENT OF PSYCHOLOGY

POSITION ORGANIZATION CHARTS

CHART III-h

CHART UPDATED

DATE JUL - 1 2003

Approved:

Richard Dubanoski

Richard Dubanoski, Dean
College of Social Sciences

DEPARTMENT OF PSYCHOLOGY

Chair (appointed from faculty positions)

Director, Clinical Studies (appointed from faculty positions)

Secretary II, SR-14, #12856	1.00
Clerk-Stenographer III, SR-11, #19052	1.00
Educational Sp, PBB, #80638	1.00

Faculty Positions: 27.75

Full time: #82114, 82198, 82294, 82398, 82412,
82471, 82537, 82564, 82615, 82629,
82916, 83016, 83092, 83110, 83458,
83507, 83626, 84131, 84346, 84416,
84491, 84497, 84827, 84866, 85075,
85450, 88005

Part time: #84319 (0.75)

Graduate Assistants: 4.00

#85148, 88046, 88060, 88252, 88320
88362, 88511, 88559

34.75

General Funds 34.75

OFFICE OF THE DEAN

STATE OF HAWAII
UNIVERSITY OF HAWAII
UNIVERSITY OF HAWAII AT MANOA
COLLEGES OF ARTS AND SCIENCES
COLLEGE OF SOCIAL SCIENCES
PUBLIC ADMINISTRATION PROGRAM

POSITION ORGANIZATION CHART

Chart III-i

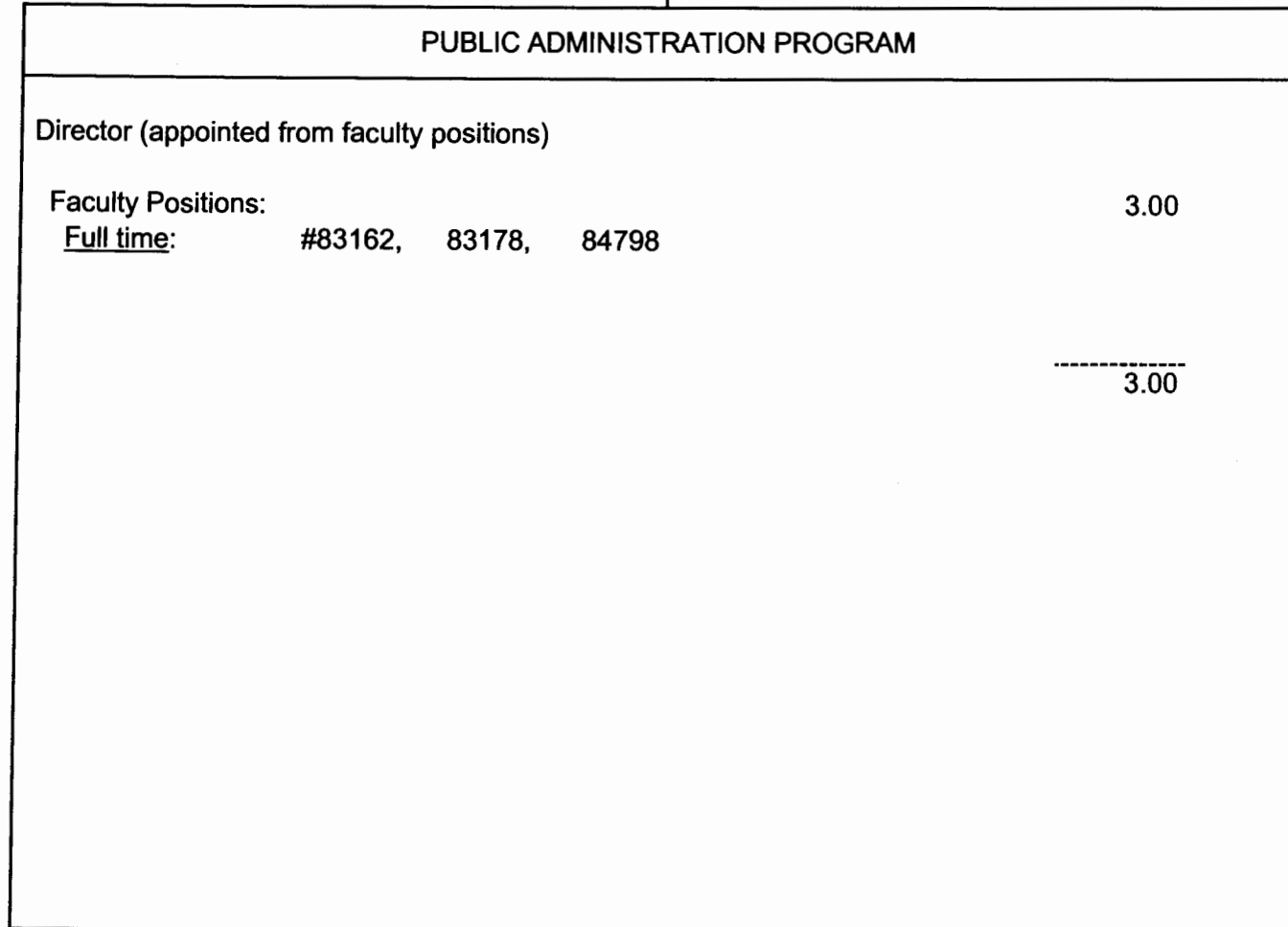
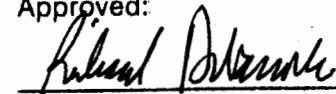


CHART UPDATED

DATE JUL - 1 2003

Approved:



Richard Dubanoski, Dean
College of Social Sciences

General Funds 3.00

OFFICE OF THE DEAN

STATE OF HAWAII
UNIVERSITY OF HAWAII
UNIVERSITY OF HAWAII AT MANOA
COLLEGES OF ARTS AND SCIENCES
COLLEGE OF SOCIAL SCIENCES
DEPARTMENT OF SOCIOLOGY

POSITION ORGANIZATION CHART

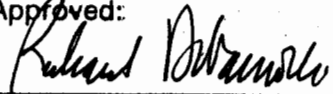
CHART III-j

DEPARTMENT OF SOCIOLOGY					
Chair (appointed from faculty positions)					
Secretary II, SR-14, #13485					1.00
Clerk-Stenographer II, SR-09, #16953					1.00
Faculty Positions:					19.00
<u>Full time:</u> #82097, 82125, 82204, 82207, 82323,					
82605, 83050, 83713, 84076, 84121,					
84237, 84286, 84456, 84502, 84504,					
84575, 84616, 84642, 85806					
Graduate Assistants:					5.50
#88008, 88100, 88182, 88208, 88268					
88408, 88485, 88498, 88533, 88616					
88392					
					----- 26.50

CHART UPDATED

DATE JUL - 1 2003

Approved:



Richard Dubanoski, Dean
College of Social Sciences

General Funds 26.50

OFFICE OF THE DEAN

STATE OF HAWAII
UNIVERSITY OF HAWAII
UNIVERSITY OF HAWAII AT MANOA
COLLEGES OF ARTS AND SCIENCES
COLLEGE OF SOCIAL SCIENCES
DEPARTMENT OF URBAN AND REGIONAL PLANNING

POSITION ORGANIZATION CHART

CHART III-k

DEPARTMENT OF URBAN AND REGIONAL PLANNING		
Chair (appointed from faculty positions)		
Secretary II, SR-14, #15640		1.00
Faculty Positions:		7.50
Full time:	#82377, 82539, 83624, 84060, 84351, 84522, 85736	
Part time:	#84811 (.50)	
		8.50

CHART UPDATED

DATE JUL - 1 2003

Approved:

Richard Dubanoski

Richard Dubanoski, Dean
College of Social Sciences

General Funds 8.50

OFFICE OF THE DEAN

STATE OF HAWAII
UNIVERSITY OF HAWAII
UNIVERSITY OF HAWAII AT MANOA
COLLEGES OF ARTS AND SCIENCES
COLLEGE OF SOCIAL SCIENCES
WOMEN'S STUDIES PROGRAM

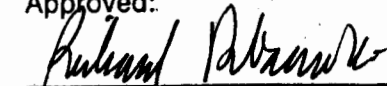
POSITION ORGANIZATION CHART

CHART III-I

WOMEN'S STUDIES PROGRAM	
Director (appointed from faculty positions)	
Secretary II, SR-14, #31328	1.00
Faculty Positions:	6.00
Full time: #82870, 84200, 84804, 84817, 86071	
Part time: #84057 (.50), #85962 (.50)	
	----- 7.00

CHART UPDATED
DATE JUL - 1 2003

Approved:



Richard Dubanoski, Dean
College of Social Sciences

General Funds 7.00

OFFICE OF THE DEAN

STATE OF HAWAII
UNIVERSITY OF HAWAII
UNIVERSITY OF HAWAII AT MANOA
COLLEGES OF ARTS AND SCIENCES
COLLEGE OF SOCIAL SCIENCES
SPARK M. MATSUNAGA INSTITUTE FOR PEACE

POSITION ORGANIZATION CHART

CHART III-m

CHART UPDATED

DATE JUL - 1 2003

Approved:



Richard Dubanoski, Dean
College of Social Sciences

SPARK M. MATSUNAGA INSTITUTE FOR PEACE

Director (appointed from faculty positions)

Secretary I, SR-12, #42279 1.00

Educational Sp, PBB, #80358 1.00

Faculty Positions: 3.50

Full time: #88092, 88112, 88732

Part time: #88113 (.50)

5.50

General Funds 5.50