

OFFICE OF UNIVERSITY OF HAWAII AT MANOA  
CHANCELLOR

STATE OF HAWAII  
UNIVERSITY OF HAWAII  
UNIVERSITY OF HAWAII AT MANOA  
COLLEGE OF TROPICAL AGRICULTURE AND HUMAN  
RESOURCES

OFFICE OF THE DEAN\*  
CHART XLI-A

ORGANIZATIONAL CHART  
CHART XLI

OFFICE OF PUBLICATIONS AND INFORMATION  
CHART XLI-B

OFFICE OF ADMINISTRATIVE SERVICES  
CHART XLI-C

OFFICE OF PLANNING AND MANAGEMENT SYSTEMS  
CHART XLI-D

OFFICE OF THE ASSOCIATE DEAN  
FOR ACADEMIC AND  
STUDENT AFFAIRS  
CHART XLI-E

OFFICE OF THE ASSOCIATE DEAN  
AND ASSOCIATE DIRECTOR  
FOR RESEARCH  
CHART XLI-F

OFFICE OF THE ASSOCIATE DEAN  
AND ASSOCIATE DIRECTOR  
FOR COOPERATIVE EXTENSION  
CHART XLI-G

COUNTY ADMINISTRATION  
CHART XLI-Q,R,S,T,U,V,W

EXTENSION PROGRAMS  
CHART XLI-N

FAMILY AND CONSUMER SCIENCES  
CENTER ON THE FAMILY  
4-H OFFICE  
HUMAN NUTRITION, FOOD AND ANIMAL SCIENCES  
MOLECULAR BIOSCIENCES AND BIOSYSTEMS ENGINEERING  
NATURAL RESOURCES & ENVIRONMENTAL MANAGEMENT  
PLANT AND ENVIRONMENTAL PROTECTION SCIENCES  
TROPICAL PLANT & SOIL SCIENCE

CHART XLI-H  
CHART XLI-O  
CHART XLI-P  
CHART XLI-I  
CHART XLI-J  
CHART XLI-K  
CHART XLI-L  
CHART XLI-M

CHART UPDATED

DATE JUL - 1 2003

\* & Director of Research and Cooperative Extension

STATE OF HAWAII  
UNIVERSITY OF HAWAII  
UNIVERSITY OF HAWAII AT MANOA  
COLLEGE OF TROPICAL AGRICULTURE AND HUMAN  
RESOURCES

OFFICE OF THE DEAN  
POSITION ORGANIZATION CHART: XLI-A

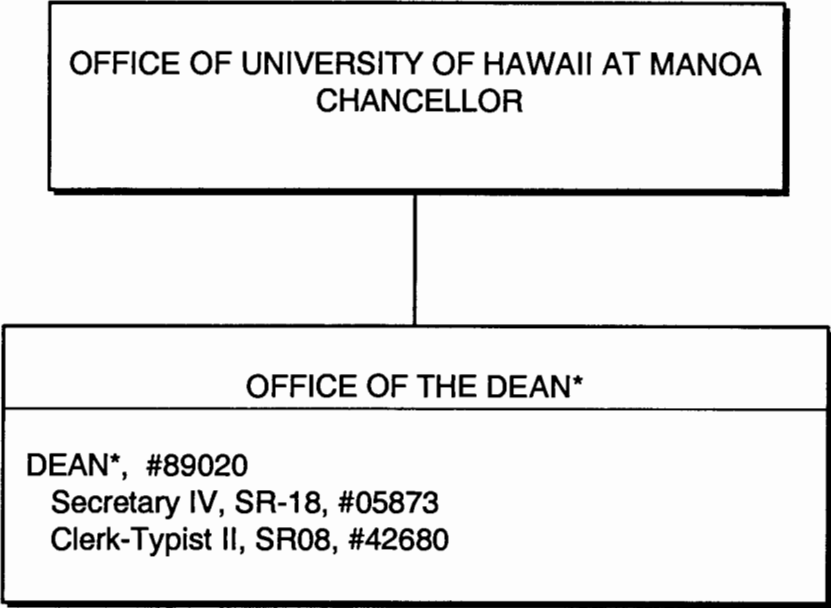


CHART UPDATED  
DATE JUL - 1 2003

\* & Director of Research and Cooperative Extension

STATE OF HAWAII  
UNIVERSITY OF HAWAII  
UNIVERSITY OF HAWAII AT MANOA  
COLLEGE OF TROPICAL AGRICULTURE AND HUMAN RESOURCES

OFFICE OF PUBLICATIONS AND INFORMATION  
POSITION ORGANIZATION CHART: XLI-B

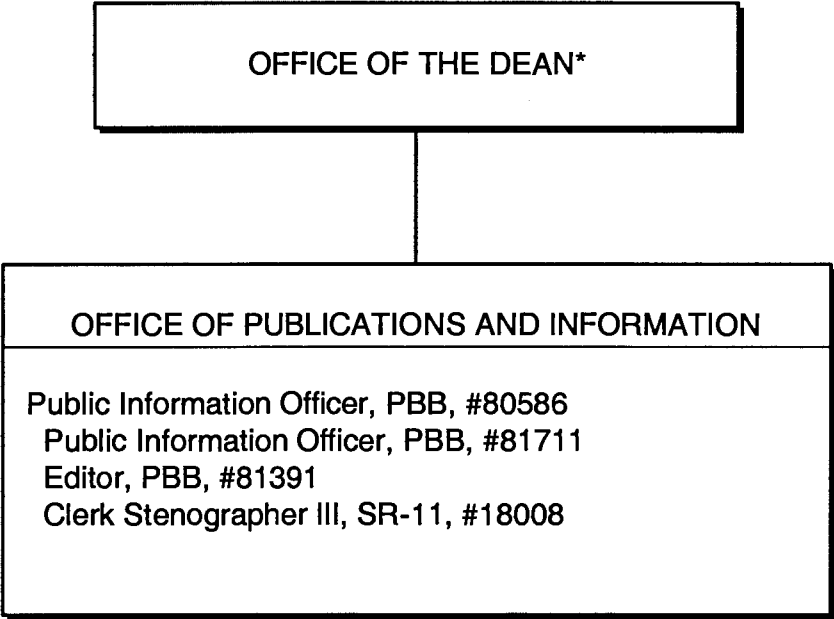


CHART UPDATED  
DATE JUL - 1 2003

\*& Director of Research and Cooperative Extension

STATE OF HAWAII  
UNIVERSITY OF HAWAII  
UNIVERSITY OF HAWAII AT MANOA  
COLLEGE OF TROPICAL AGRICULTURE AND HUMAN RESOURCES

OFFICE OF ADMINISTRATIVE SERVICES  
POSITION ORGANIZATION CHART: XLI-C

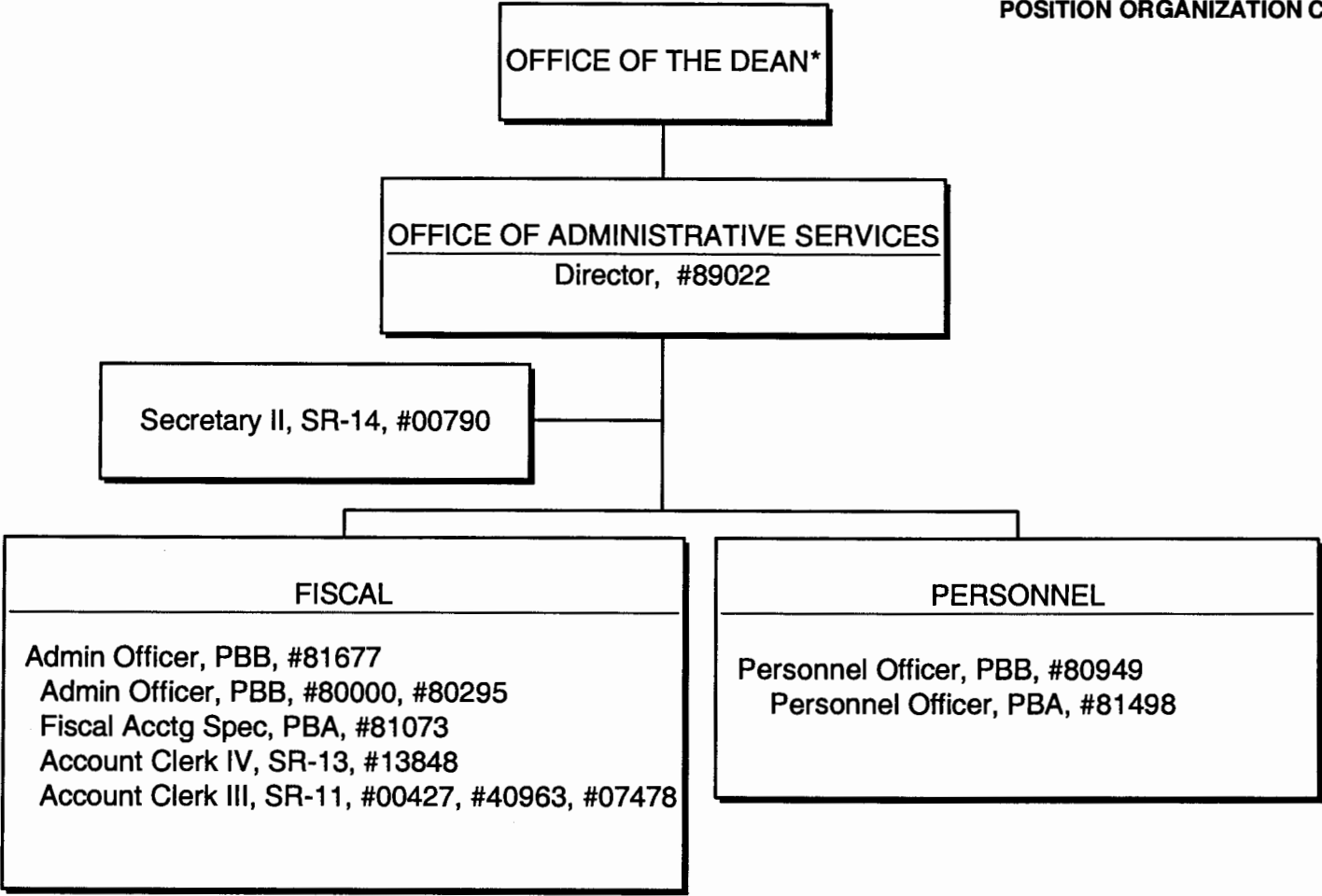


CHART UPDATED  
JUL - 1 2003  
DATE \_\_\_\_\_

\* & Director of Research and Cooperative Extension

STATE OF HAWAII  
UNIVERSITY OF HAWAII  
UNIVERSITY OF HAWAII AT MANOA  
COLLEGE OF TROPICAL AGRICULTURE AND HUMAN RESOURCES

OFFICE OF PLANNING AND MANAGEMENT SYSTEMS  
POSITION ORGANIZATION CHART: XLI-D

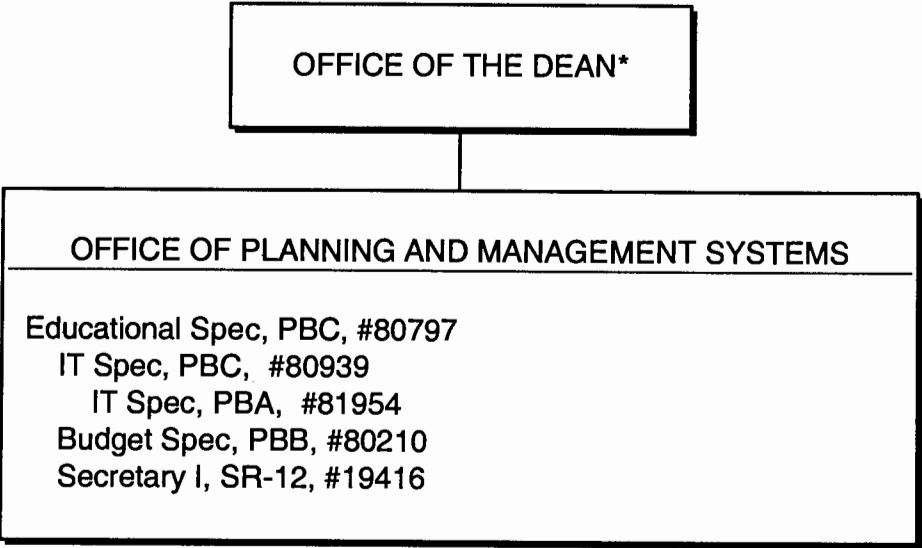


CHART UPDATED  
DATE JUL - 1 2003

\*& Director of Research and Cooperative Extension

STATE OF HAWAII  
UNIVERSITY OF HAWAII  
UNIVERSITY OF HAWAII AT MANOA  
COLLEGE OF TROPICAL AGRICULTURE AND HUMAN RESOURCES

OFFICE OF THE ASSOCIATE DEAN FOR ACADEMIC AND STUDENT  
AFFAIRS  
POSITION ORGANIZATION CHART: XLI-E

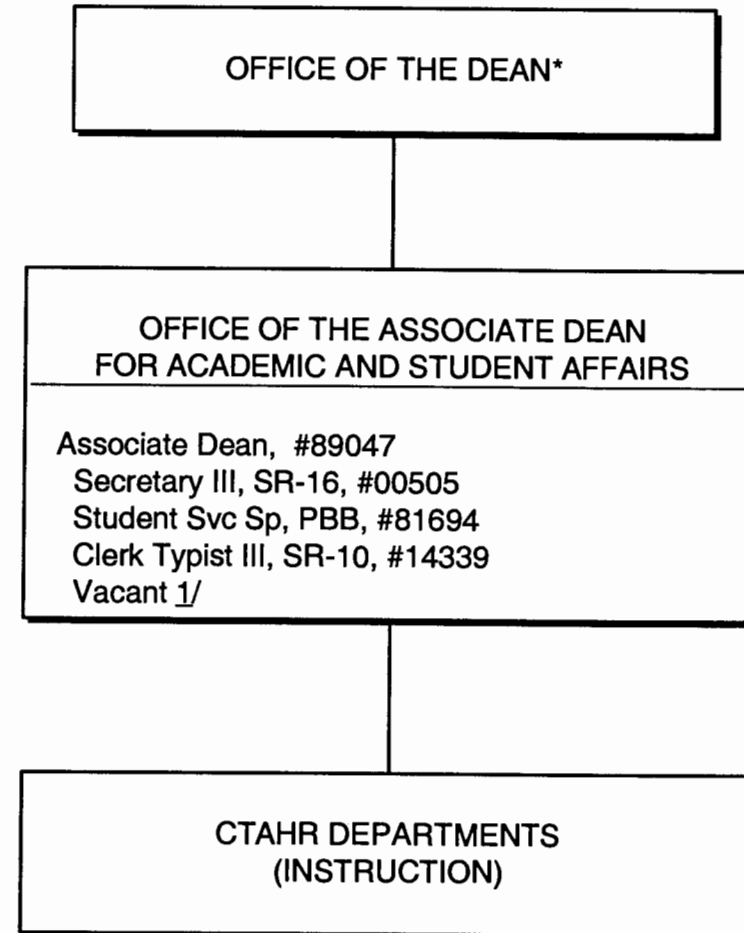


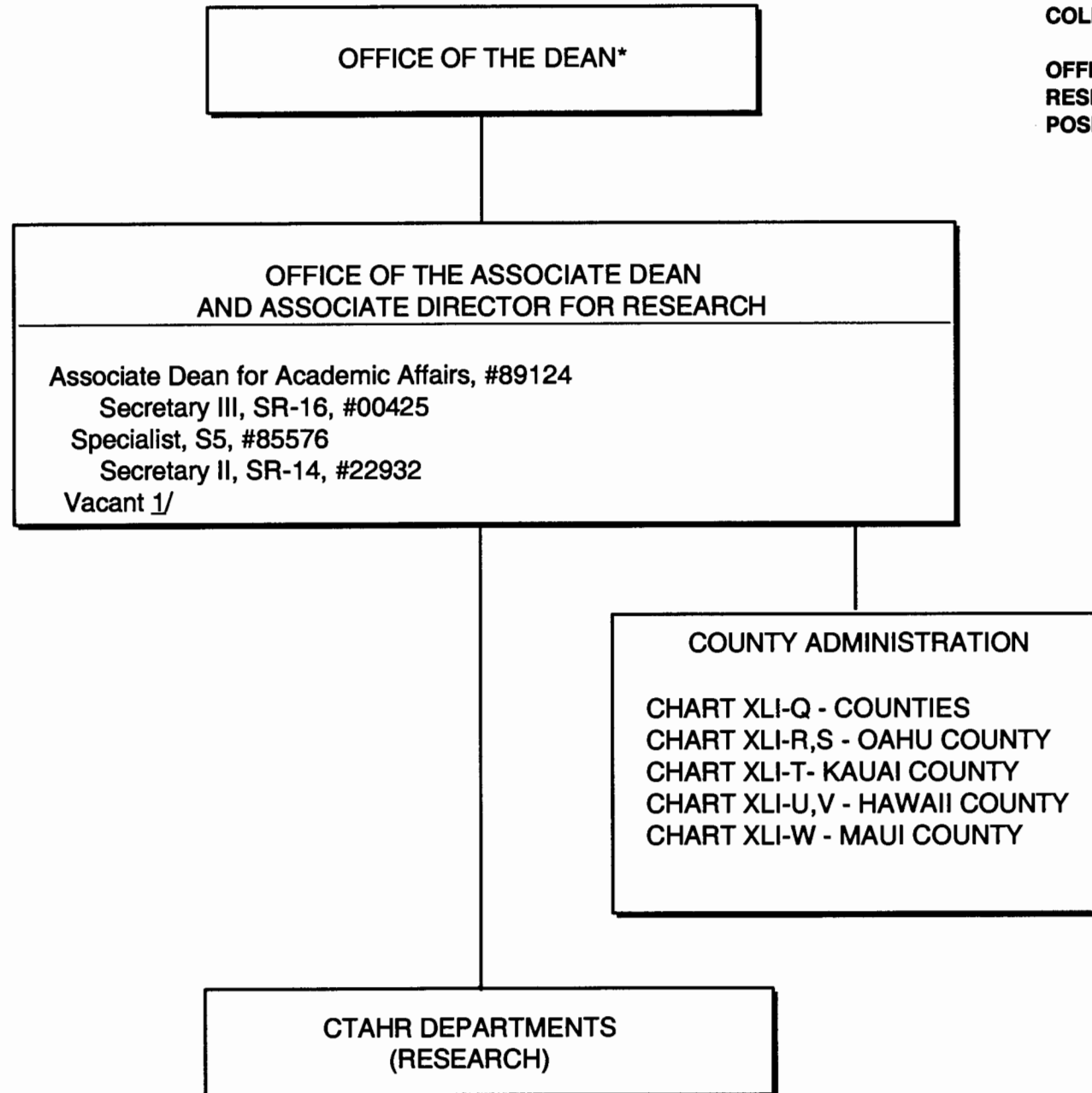
CHART UPDATED  
DATE JUL - 1 2003

\* & Director of Research and Cooperative Extension  
1/ Vacant Position in Manoa Pool:  
Clerk Typist II, #45478 (.75)

STATE OF HAWAII  
UNIVERSITY OF HAWAII  
UNIVERSITY OF HAWAII AT MANOA  
COLLEGE OF TROPICAL AGRICULTURE AND HUMAN RESOURCES

OFFICE OF THE ASSOCIATE DEAN AND ASSOCIATE DIRECTOR FOR  
RESEARCH

POSITION ORGANIZATION CHART: XLI-F



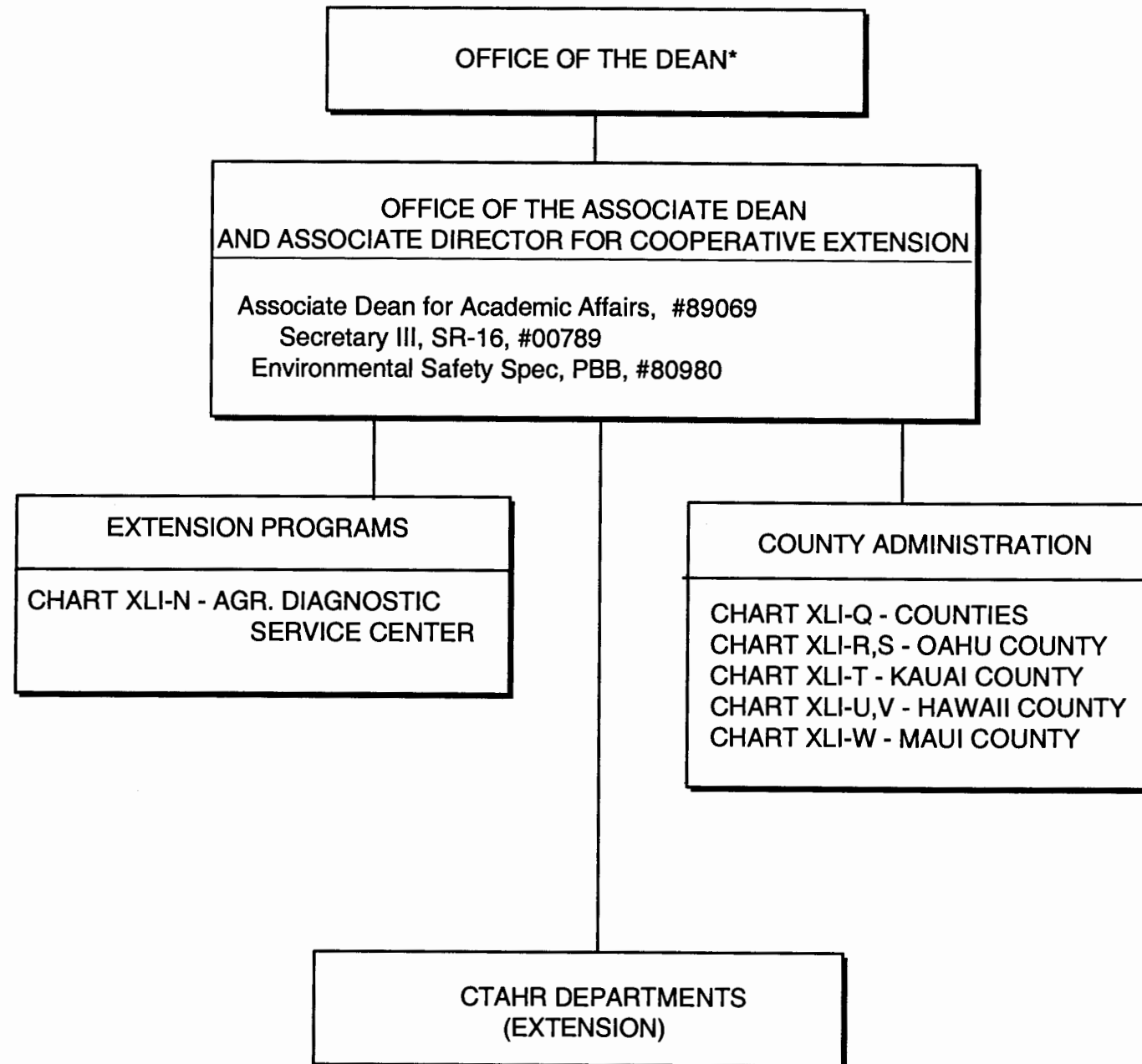
\* & Director of Research and Cooperative Extension  
1/ Vacant Positions in Manoa Pool:  
UH Research Assoc V, #81666  
UH Fiscal Acctg Spec II, #81280  
Ag Res Tech V, #50068

CHART UPDATED

DATE JUL - 1 2003

STATE OF HAWAII  
UNIVERSITY OF HAWAII  
UNIVERSITY OF HAWAII AT MANOA  
COLLEGE OF TROPICAL AGRICULTURE AND HUMAN RESOURCES

OFFICE OF THE ASSOCIATE DEAN AND ASSOCIATE DIRECTOR  
FOR COOPERATIVE EXTENSION  
POSITION ORGANIZATION CHART: XLI-G



\* & Director of Research and Cooperative Extension

CHART UPDATED  
DATE JUL - 1 2003

OFFICES OF THE ASSOCIATE DEANS AND DIRECTORS  
FOR ACADEMIC AND STUDENT AFFAIRS,  
RESEARCH, AND COOPERATIVE EXTENSION

DEPARTMENT OF FAMILY AND CONSUMER SCIENCES

Chairperson (Appointed from among faculty positions)

Secretary II, SR-14, #22849

Clerk-Steno II, SR-09, #21208

Clerk-Typist II, SR-08, #04108

Faculty <sup>1/</sup>

Oahu

#82074, #82336, #82392, #82485, #82699, #82869,  
#82094, #83220, #83242, #83525, #83553, #83666,  
#83843, #84070, #84082, #84648, #84662, #84685,  
#84914, #85151, #85421, #85476

Hawaii

#82505, #83267, #84610

Kauai

#82175

Maui

#84913

Graduate Assistant, GA, #88134 (.50), #88410 (.50),  
#88576 (.50)

STATE OF HAWAII  
UNIVERSITY OF HAWAII  
UNIVERSITY OF HAWAII AT MANOA  
COLLEGE OF TROPICAL AGRICULTURE AND HUMAN RESOURCES

DEPARTMENT OF FAMILY AND CONSUMER SCIENCES  
POSITION ORGANIZATION CHART: XLI-H

CHART UPDATED

DATE JUL - 1 2003

<sup>1/</sup> Research FTE: 2.85, Extension FTE: 15.45, Instruction FTE: 11.70

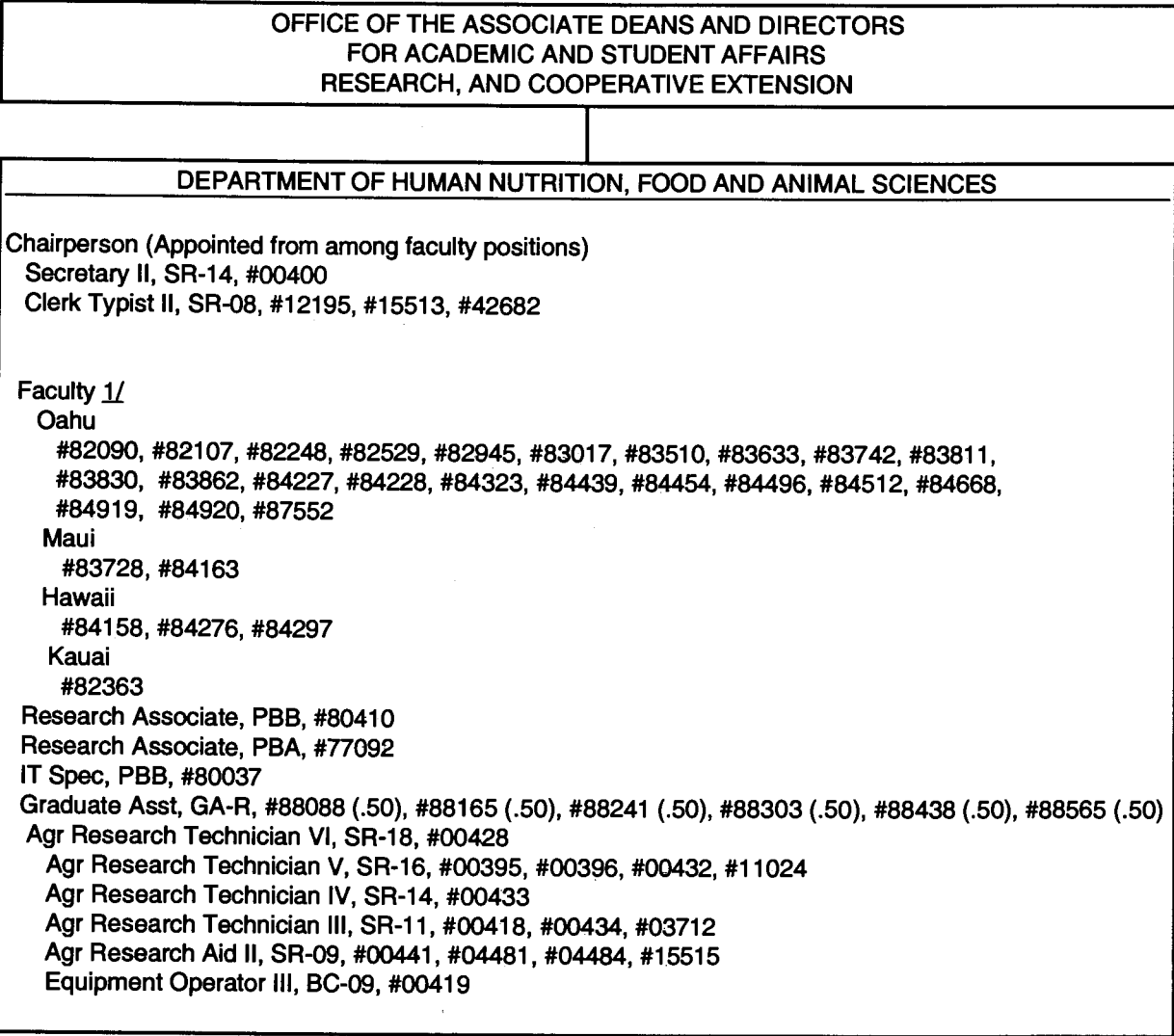


CHART UPDATED  
DATE JUL - 1 2003

STATE OF HAWAII  
UNIVERSITY OF HAWAII  
UNIVERSITY OF HAWAII AT MANOA  
COLLEGE OF TROPICAL AGRICULTURE AND HUMAN RESOURCES

DEPARTMENT OF MOLECULAR BIOSCIENCES AND BIOSYSTEMS  
ENGINEERING  
POSITION ORGANIZATION CHART: XLI-J

OFFICES OF THE ASSOCIATE DEANS AND DIRECTORS  
FOR ACADEMIC AND STUDENT AFFAIRS,  
RESEARCH, AND COOPERATIVE EXTENSION

DEPARTMENT OF MOLECULAR BIOSCIENCES AND BIOENGINEERING

Chairperson (Appointed from among faculty positions)

Secretary II, SR-14, #12960

Clerk Typist II, SR-08, #00803, #14758, #00402

Faculty<sup>1/</sup>

Oahu

#82027, #82224, #82432, #82848, #82919, #83034, #83184, #83343, #83690, #83765, #83767  
#83882, #83968, #84114, #84145, #84193, #84325, #84477, #84600, #84617, #84631, #87523

Mechanical Engineer, PBB, #80784

Research Associate, PBB, #80323, #80324, #80409, #81325

Graduate Assistant, GA-R, #88219 (.50), #88509 (.50), #88630 (.50), #88643 (.50)

Food Professor IV, F109B, #07979

Agr Eqp Dev Wkg Supv, WS-13, #05729

Agr Lab Technician I, BC-12, #05730

CHART UPDATED

DATE JUL - 1 2003

<sup>1/</sup> Research FTE: 15.95, Extension FTE: 1.60, Instruction FTE: 4.45

STATE OF HAWAII  
UNIVERSITY OF HAWAII  
UNIVERSITY OF HAWAII AT MANOA  
COLLEGE OF TROPICAL AGRICULTURE AND HUMAN RESOURCES

DEPARTMENT OF NATURAL RESOURCES AND ENVIRONMENTAL  
MANAGEMENT  
POSITION ORGANIZATION CHART: XLI-K

OFFICES OF THE ASSOCIATE DEANS AND DIRECTORS  
FOR ACADEMIC AND STUDENT AFFAIRS,  
RESEARCH, AND COOPERATIVE EXTENSION

DEPARTMENT OF NATURAL RESOURCES AND ENVIRONMENTAL MANAGEMENT

Chairperson (Appointed from among faculty positions)

Secretary II, SR-14, #05838

Clerk-Steno III, SR-11, #03397

Clerk Typist II, SR-08, #42681

Faculty 1/

Oahu

#82058, #82516, #82598, #82772, #83012, #83117, #83629, #83824, #83851,  
#84120, #84171, #84216, #84449, #84488, #84627, #84872, #84915

Hawaii

#82373, #83459

Kauai

#82516

Educational Spec. PBB, #80391

Research Associate, PBA, #80320

Graduate Assistant, GA, #88028 (.50), #88181 (.50), #88431 (.50), #88494 (.50)

Agr Research Technician IV, SR-14, #00398

CHART UPDATED  
JUL - 1 2003  
DATE \_\_\_\_\_

1/ Research FTE: 8.85, Extension FTE: 5.60, Instruction FTE: 3.55

OFFICES OF THE ASSOCIATE DEANS AND DIRECTORS  
FOR ACADEMIC AND STUDENT AFFAIRS,  
RESEARCH, AND COOPERATIVE EXTENSION

STATE OF HAWAII  
UNIVERSITY OF HAWAII  
UNIVERSITY OF HAWAII AT MANOA  
COLLEGE OF TROPICAL AGRICULTURE AND HUMAN RESOURCES

DEPARTMENT OF PLANT AND ENVIRONMENTAL PROTECTION  
SCIENCES  
POSITION ORGANIZATION CHART: XLI-L

DEPARTMENT OF PLANT AND ENVIRONMENTAL PROTECTION SCIENCES

Chairperson (Appointed from among faculty positions)

Secretary II, SR-14, #07477

Clerk-Typist II, SR-08, #00794, #00801, #15509

Faculty <sup>1/</sup>

Oahu

#82047, #82139, #82238, #82550, #82687, #82865, #82866, #82976,  
, #83067, #83320, #83513, #83770, #83884, #84006, #84041, #84138,  
, #84316, #84388, #84911, #85510, #85547, #87443

Maui

#86034, #85530

Hawaii

#82985, #82722, #83255, #83462, #83542, #84910, #85538

Kauai

#83816, #83840, #85505

Educational Specialist, PBB, #80250

Research Associate, PBB, #80310, #80385, #80386, #80388, #81178,  
#81311

Research Associate, PBA, #81313

Graduate Assistant, GA, #88486 (.50), #84932 (.50)

Agr Research Technician V, SR-16, #00442

Agr Research Technician IV, SR-14, #24270

Agr Research Technician III, SR-11, #24269

CHART UPDATED

DATE JUL - 1 2003

<sup>1/</sup> Research FTE: 15.45, Extension FTE: 14.80, Instruction FTE: 3.75

OFFICES OF THE ASSOCIATE DEANS AND DIRECTORS  
FOR ACADEMIC AND STUDENT AFFAIRS,  
RESEARCH, AND COOPERATIVE EXTENSION

STATE OF HAWAII  
UNIVERSITY OF HAWAII  
UNIVERSITY OF HAWAII AT MANOA  
COLLEGE OF TROPICAL AGRICULTURE AND HUMAN  
RESOURCES

DEPARTMENT OF TROPICAL PLANT AND SOIL SCIENCE  
POSITION ORGANIZATION CHART: XLI-M

DEPARTMENT OF TROPICAL PLANT AND SOIL SCIENCE

Chairperson (Appointed from among faculty positions)

Secretary II, SR-14, #00793, #15512 <sup>1/</sup>

Clerk-Steno III, SR-11, #00399

Clerk Typist II, SR-08, #07872

Faculty <sup>2/</sup>

Oahu

#82023, #82181, #82240, #82313, #82464, #82704, #82747, #83142,  
#83159, #83260, #83304, #83388, #83682, #83705, #83740, #83785,  
#83938, #84067, #84306, #84321, #84408, #84420,  
#84481, #84501, #84640, #84916, #85555

Maui

#82881, #83848, #84075, #84530, #85477, #87584

Hawaii

#82758, #83054, #82951, #83073, #83286, #83515, #84354, #84585, #85542

Kauai

#82196, #84500

Educational Specialist, PBB, #80249, #81362

Research Associate, PBB, #80270, #80313

Research Associate, PBA, #80311

Graduate Assistant, GA, #88171 (.50), #88423 (.50)

Agr Research Technician V, SR-16, #11019

Agr Research Technician IV, SR-14, #05392, #00397

CHART UPDATED

DATE JUL - 1 2003

<sup>1/</sup>Position to be redescribed.

<sup>2/</sup>Research FTE: 19.08, Extension FTE: 21.30, Instruction FTE: 4.62

STATE OF HAWAII  
UNIVERSITY OF HAWAII  
UNIVERSITY OF HAWAII AT MANOA  
COLLEGE OF TROPICAL AGRICULTURE AND HUMAN RESOURCES

AGRICULTURAL DIAGNOSTIC SERVICE CENTER  
POSITION ORGANIZATION CHART: XLI-N

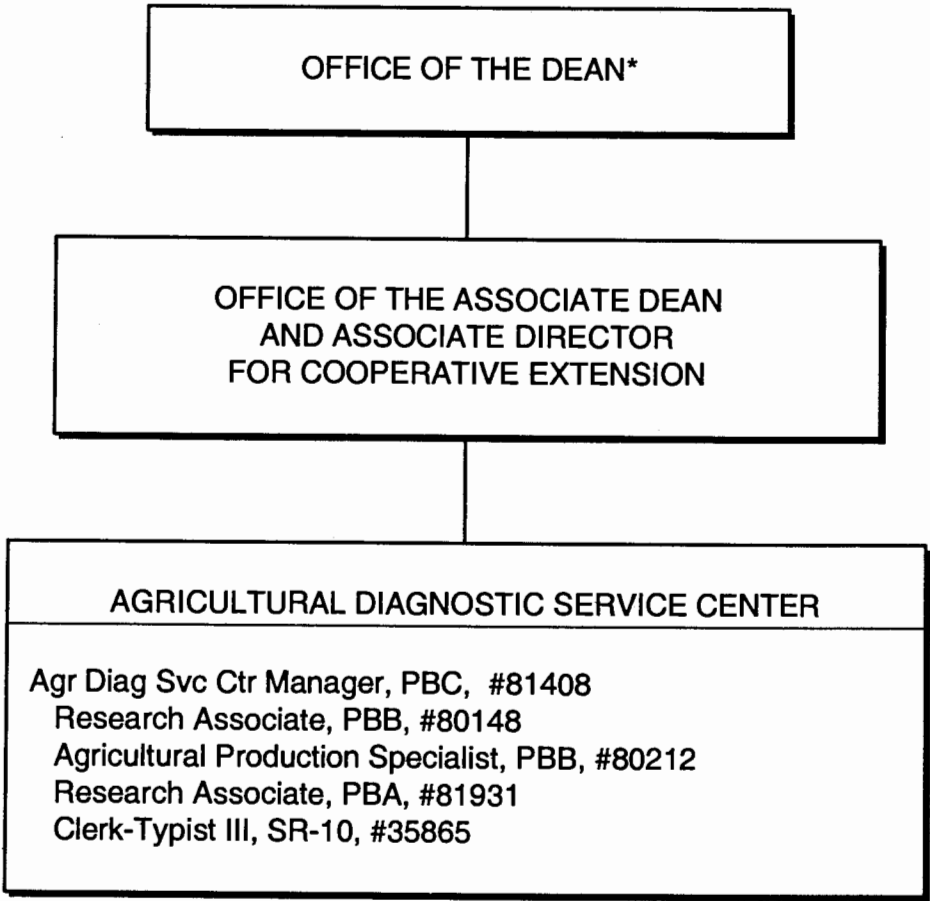


CHART UPDATED  
DATE JUL - 1 2003

\* & Director of Research and Cooperative Extension

STATE OF HAWAII  
UNIVERSITY OF HAWAII  
UNIVERSITY OF HAWAII AT MANOA  
COLLEGE OF TROPICAL AGRICULTURE AND HUMAN RESOURCES

CENTER ON THE FAMILY  
POSITION ORGANIZATION CHART: XLI-O

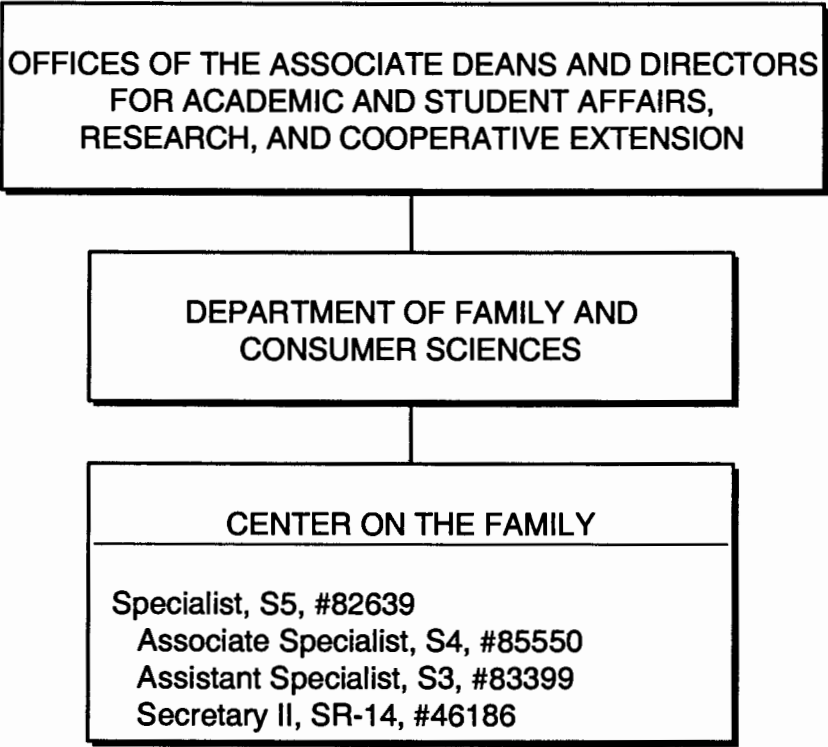


CHART UPDATED  
DATE JUL - 1 2003

STATE OF HAWAII  
UNIVERSITY OF HAWAII  
UNIVERSITY OF HAWAII AT MANOA  
COLLEGE OF TROPICAL AGRICULTURE AND HUMAN RESOURCES

4-H OFFICE  
POSITION ORGANIZATION CHART: XLI-P

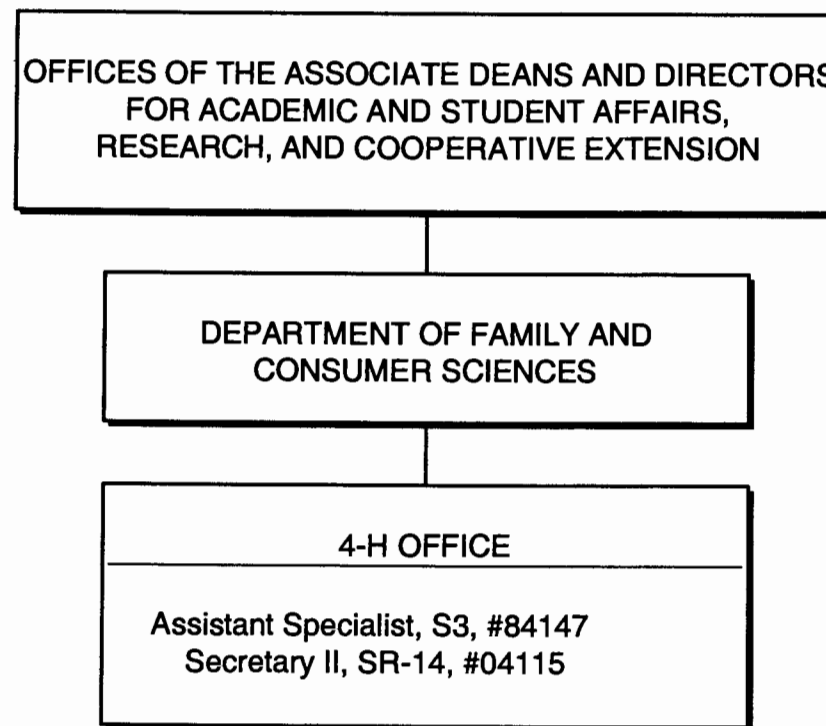


CHART UPDATED  
JUL - 1 2003  
DATE \_\_\_\_\_

STATE OF HAWAII  
UNIVERSITY OF HAWAII  
UNIVERSITY OF HAWAII AT MANOA  
COLLEGE OF TROPICAL AGRICULTURE AND HUMAN RESOURCES

COUNTY ADMINISTRATION  
POSITION ORGANIZATION CHART: XLI-Q

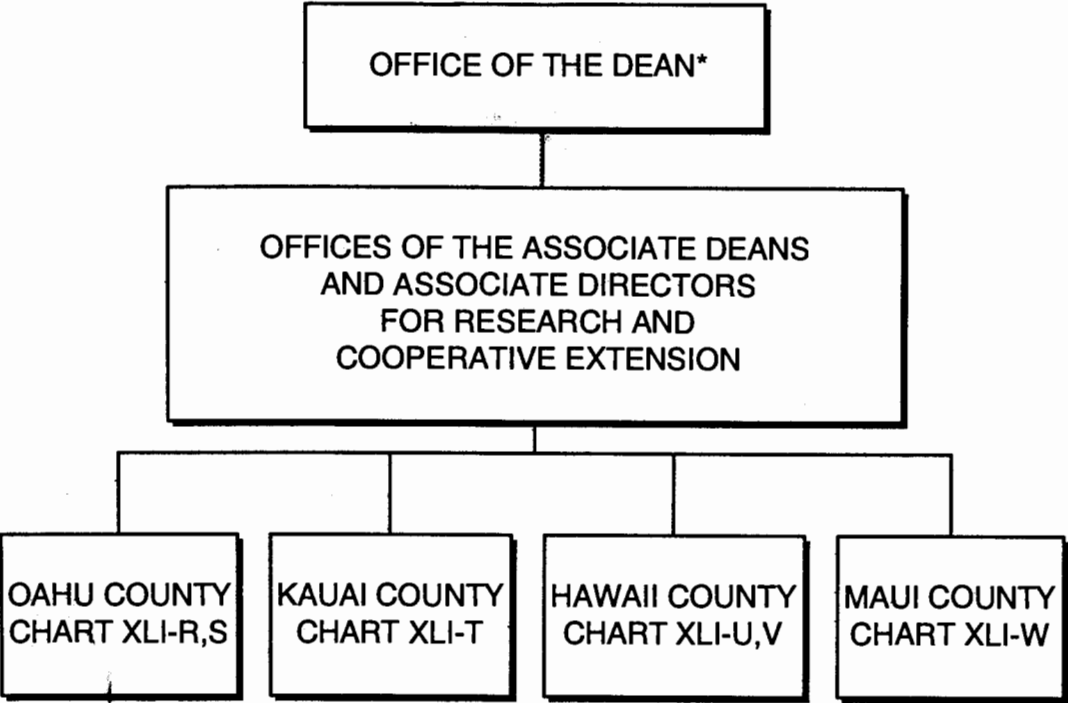


CHART UPDATED  
DATE JUL - 1 2003

\*& Director of Cooperative Science & Education

OAHU COUNTY  
POSITION ORGANIZATION CHART: XLI-R

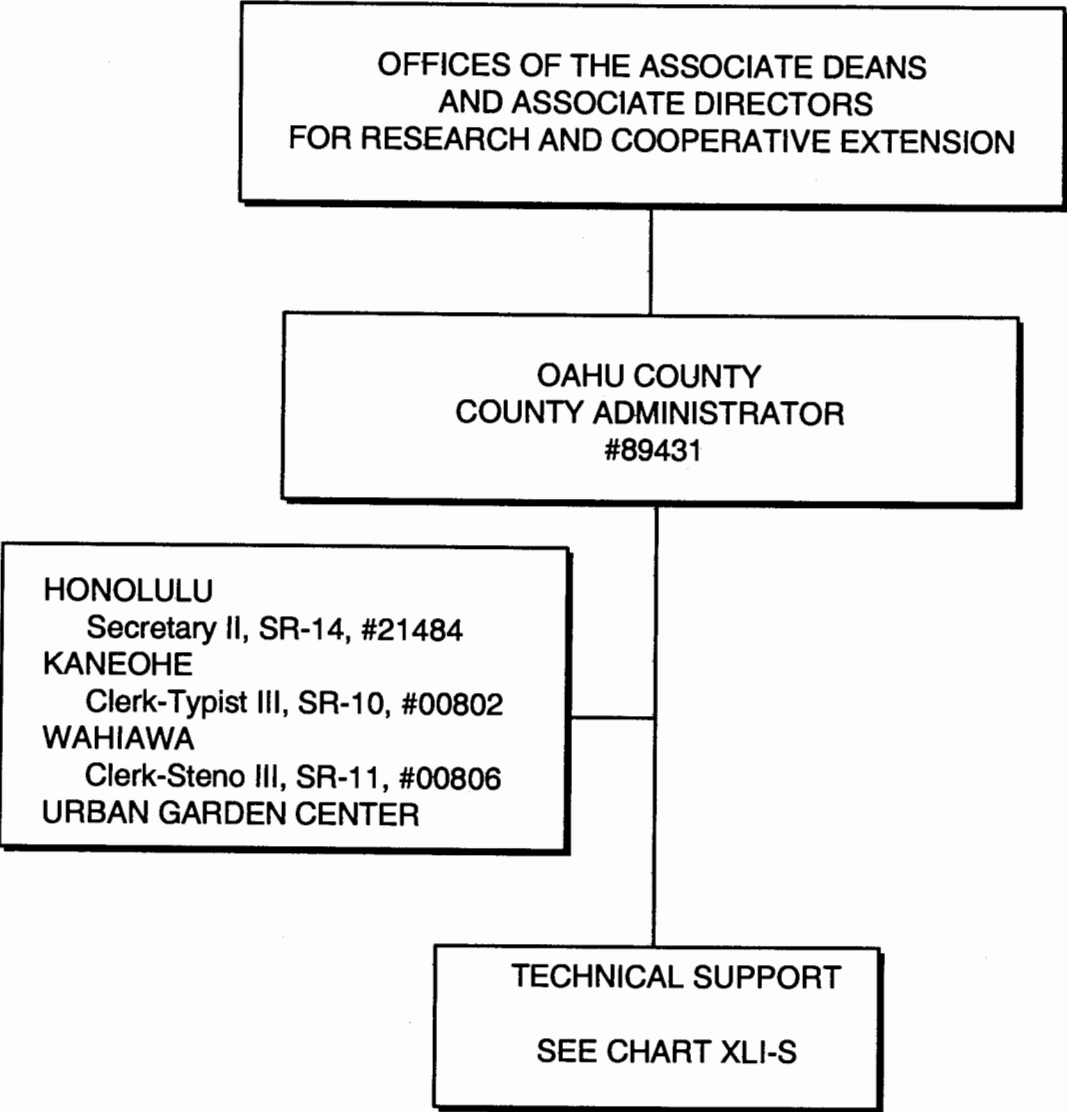
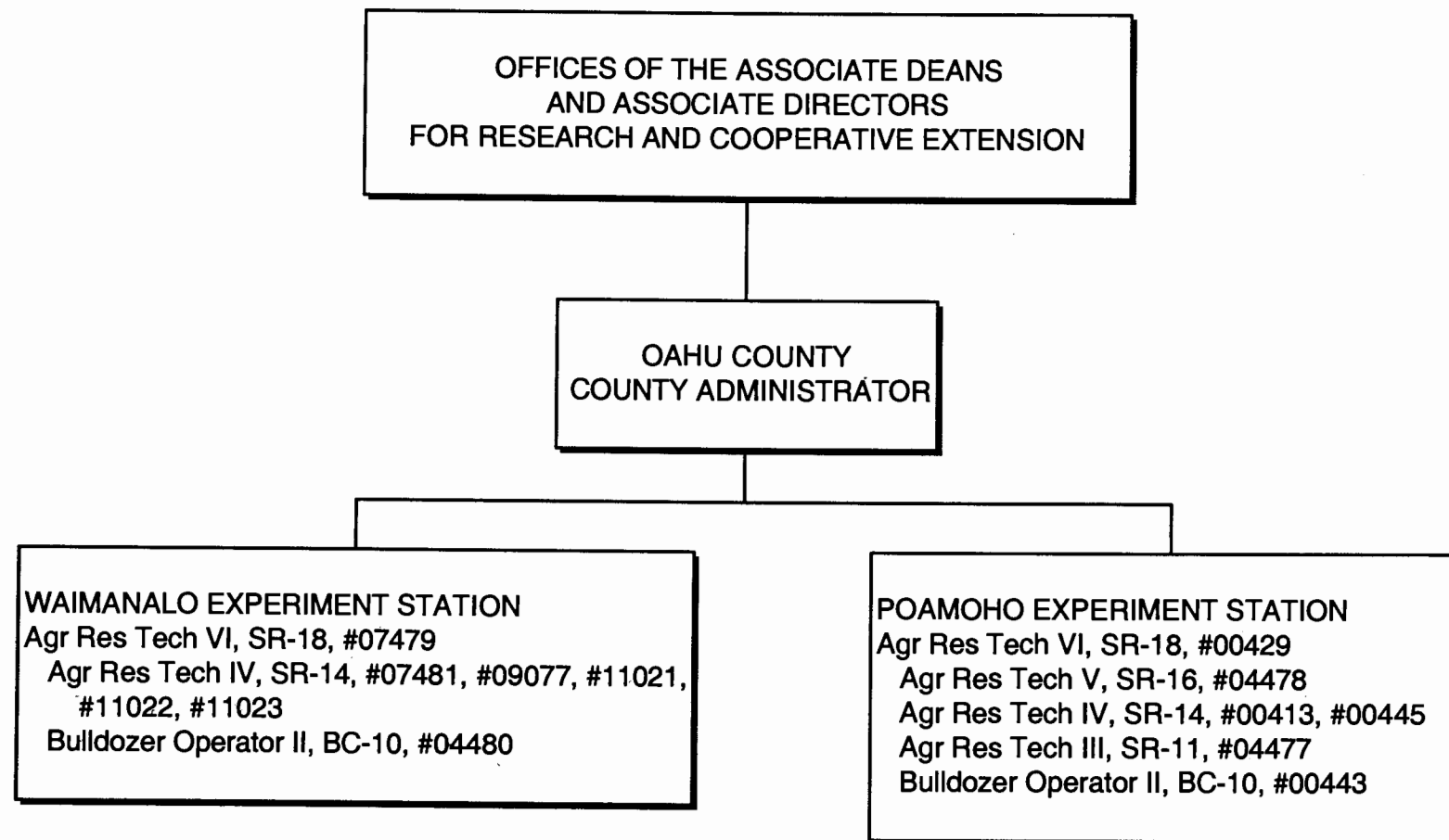


CHART UPDATED  
DATE JUL - 1 2003

STATE OF HAWAII  
UNIVERSITY OF HAWAII  
UNIVERSITY OF HAWAII AT MANOA  
COLLEGE OF TROPICAL AGRICULTURE AND HUMAN RESOURCES

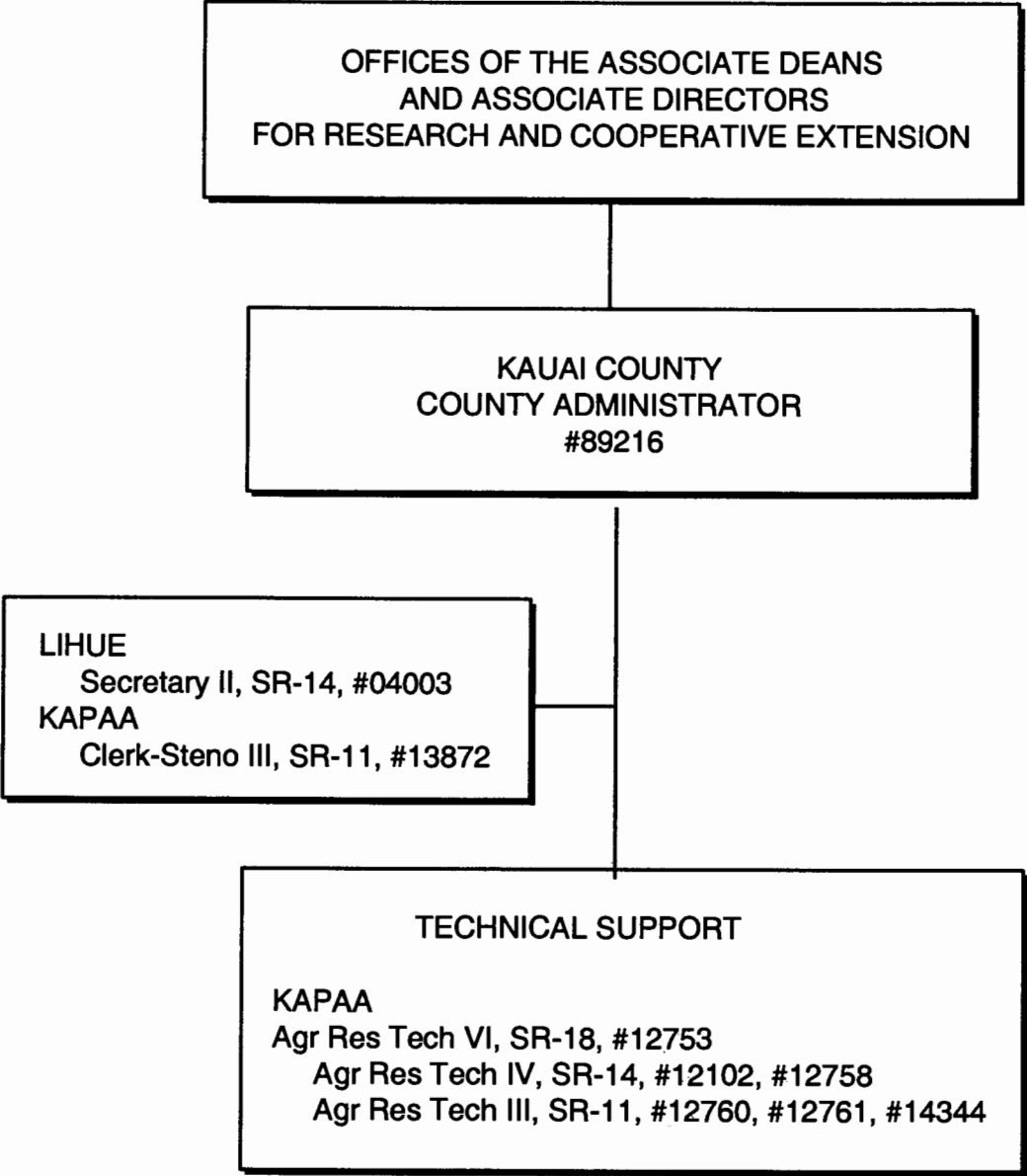
OAHU COUNTY - TECHNICAL SUPPORT  
POSITION ORGANIZATION CHART: XLI-S



**CHART UPDATED**

DATE JUL - 1 2003

KAUAI COUNTY  
POSITION ORGANIZATION CHART: XLI-T



**CHART UPDATED**  
DATE JUL - 1 2003

STATE OF HAWAII  
UNIVERSITY OF HAWAII  
UNIVERSITY OF HAWAII AT MANOA  
COLLEGE OF TROPICAL AGRICULTURE AND HUMAN RESOURCES

HAWAII COUNTY  
POSITION ORGANIZATION CHART: XLI-U

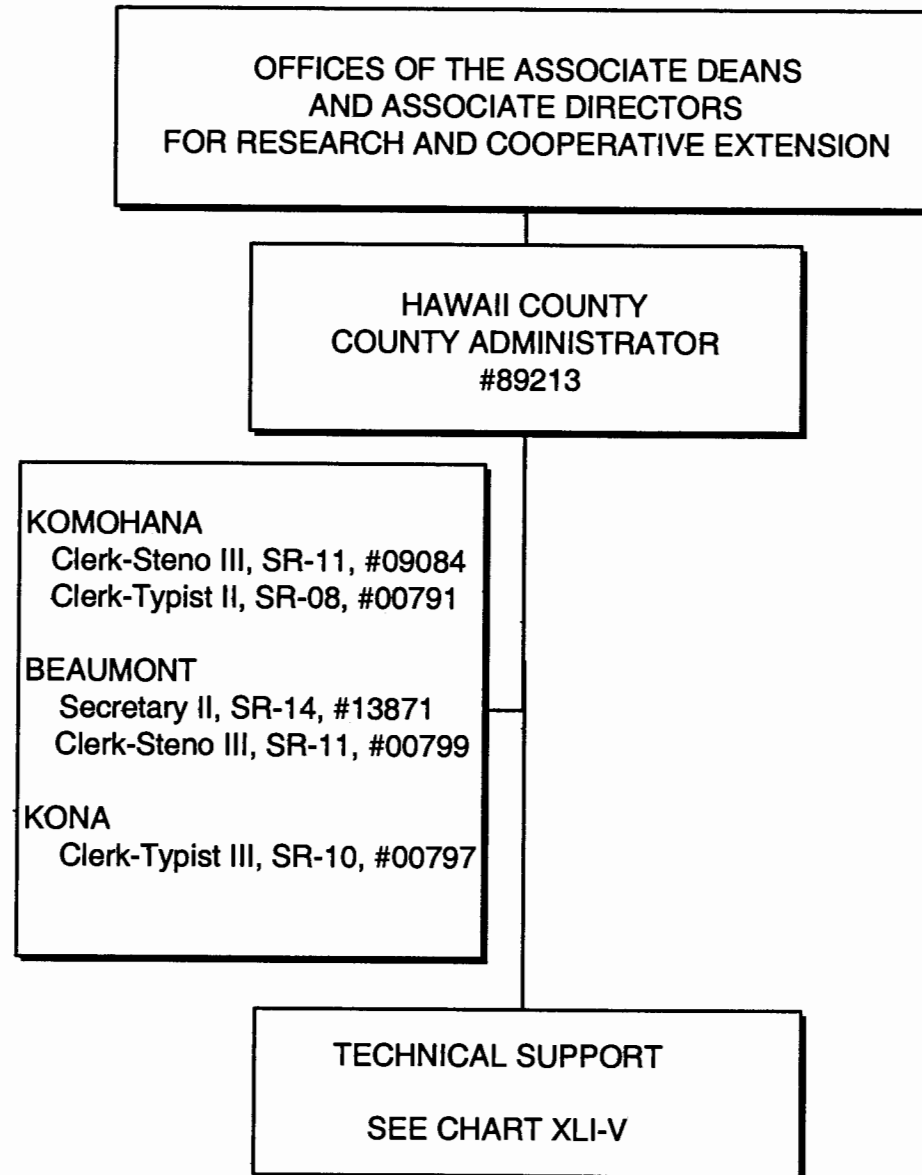


CHART UPDATED  
DATE JUL - 1 2003

OFFICES OF THE ASSOCIATE DEANS  
AND ASSOCIATE DIRECTORS  
FOR RESEARCH AND COOPERATIVE EXTENSION

HAWAII COUNTY  
COUNTY ADMIN, #89213  
Educational Spec, PBB, #80311

WEST HAWAII  
Agr Res Tech VI, SR-18, #13530

EAST HAWAII  
Agr Res Tech VI, SR-18, #12099

MEALANI  
Agr Res Tech V, SR-16, #13534  
Agr Res Tech IV, SR-14, #12100, #14590  
Agr Res Tech III, SR-11, #13205, #13709  
#44868, #44867

WAIAKEA  
Agr Res Tech V, SR-16, #12101, #12094, #14166  
Agr Res Tech IV SR-14, #12096, #12766, #12767, #14168  
Agr Res Tech III, SR-11, #17602, #12098, #15497  
Building Maintenance Worker I, BC-09, #12095

LALAMILO  
Agr Res Tech V, SR-16, #13535

VOLCANO  
Agr Res Tech V, SR-16, #13206

HAMAKUA  
Agr Res Tech III, SR-11, #13536

MALAMA-ki  
Agr Res Tech III, SR-11, #12765

KONA  
Agr Res Tech V, SR-16, #00409  
Agr Res Tech IV, SR-14, #22912

STATE OF HAWAII  
UNIVERSITY OF HAWAII  
UNIVERSITY OF HAWAII AT MANOA  
COLLEGE OF TROPICAL AGRICULTURE AND HUMAN RESOURCES

HAWAII COUNTY - TECHNICAL SUPPORT  
POSITION ORGANIZATION CHART: XLI-V

CHART UPDATED

DATE JUL - 1 2003

STATE OF HAWAII  
UNIVERSITY OF HAWAII  
UNIVERSITY OF HAWAII AT MANOA  
COLLEGE OF TROPICAL AGRICULTURE AND HUMAN RESOURCES

MAUI COUNTY  
POSITION ORGANIZATION CHART: XLI-W

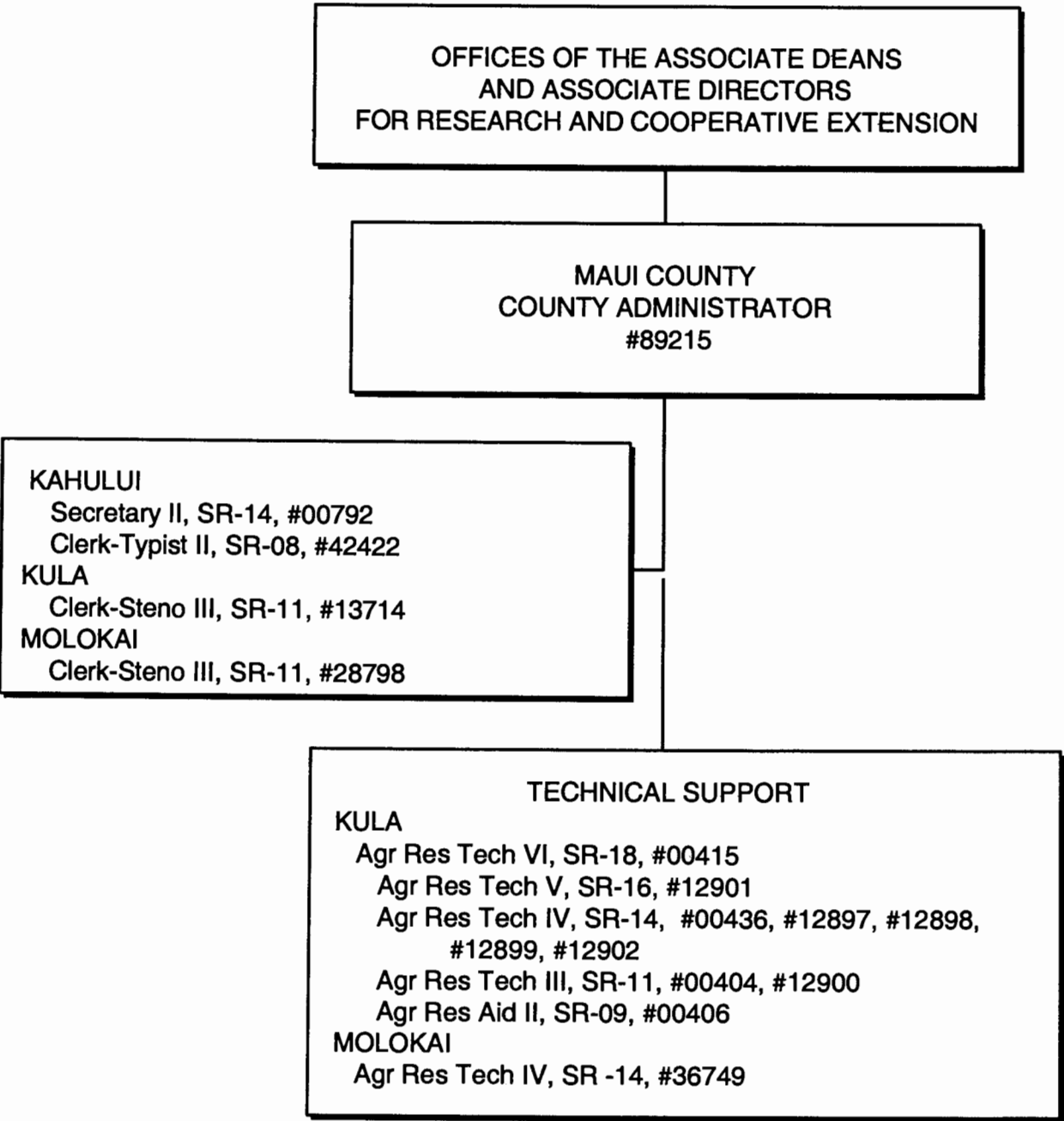


CHART UPDATED  
DATE JUL - 1 2003