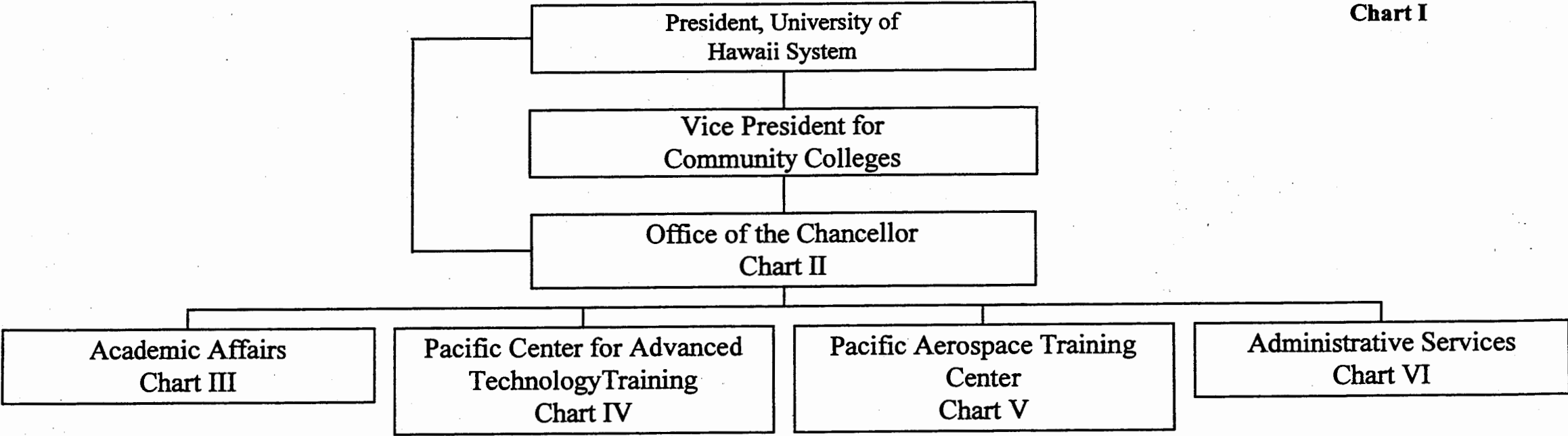


STATE OF HAWAII
UNIVERSITY OF HAWAII
COMMUNITY COLLEGES
HONOLULU COMMUNITY COLLEGE

Organization Chart

Chart I



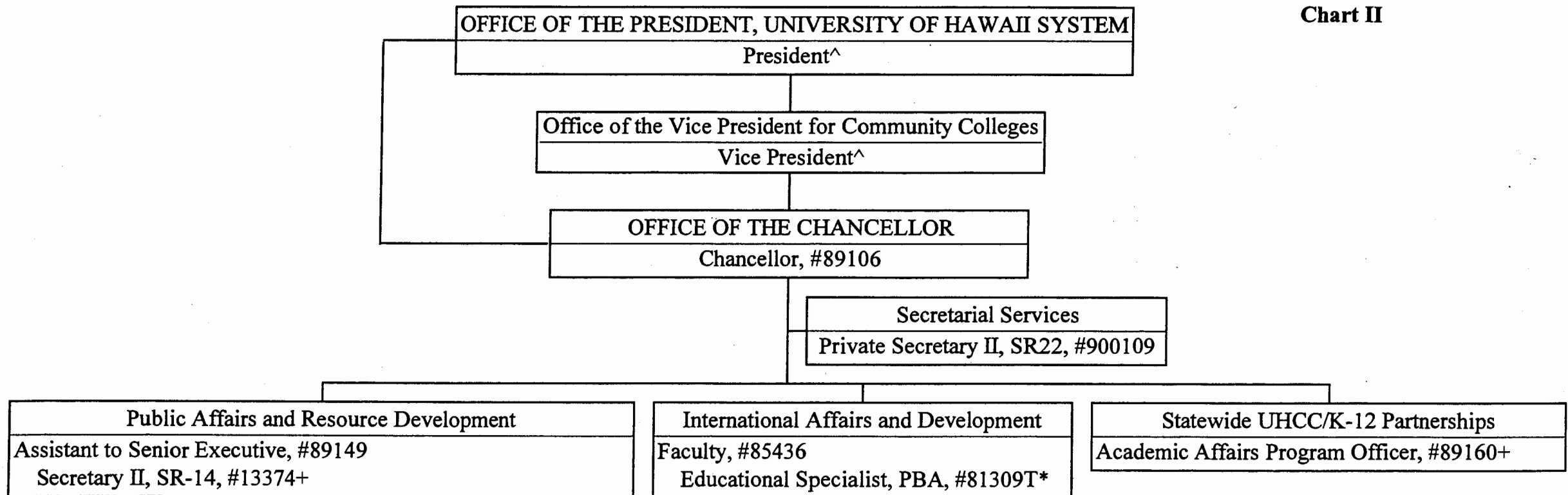
JUN 21 2005

	<u>Perm</u>	<u>Temp</u>
General Fund	280.00	7.00
(B) Special Funds	19.00	
(W) Revolving Funds	2.50	

STATE OF HAWAII
UNIVERSITY OF HAWAII
COMMUNITY COLLEGES
HONOLULU COMMUNITY COLLEGE
OFFICE OF THE CHANCELLOR

Organization Chart

Chart II



- ^ Excluded from position count this chart
- * Temporary Position
- + Position to be redescribed

JUN 21 2005

	<u>Perm</u>	<u>Temp</u>
General Fund	6.00	1.00

STATE OF HAWAII
UNIVERSITY OF HAWAII
COMMUNITY COLLEGES
HONOLULU COMMUNITY COLLEGE
ACADEMIC AFFAIRS

Organization Chart

Chart III

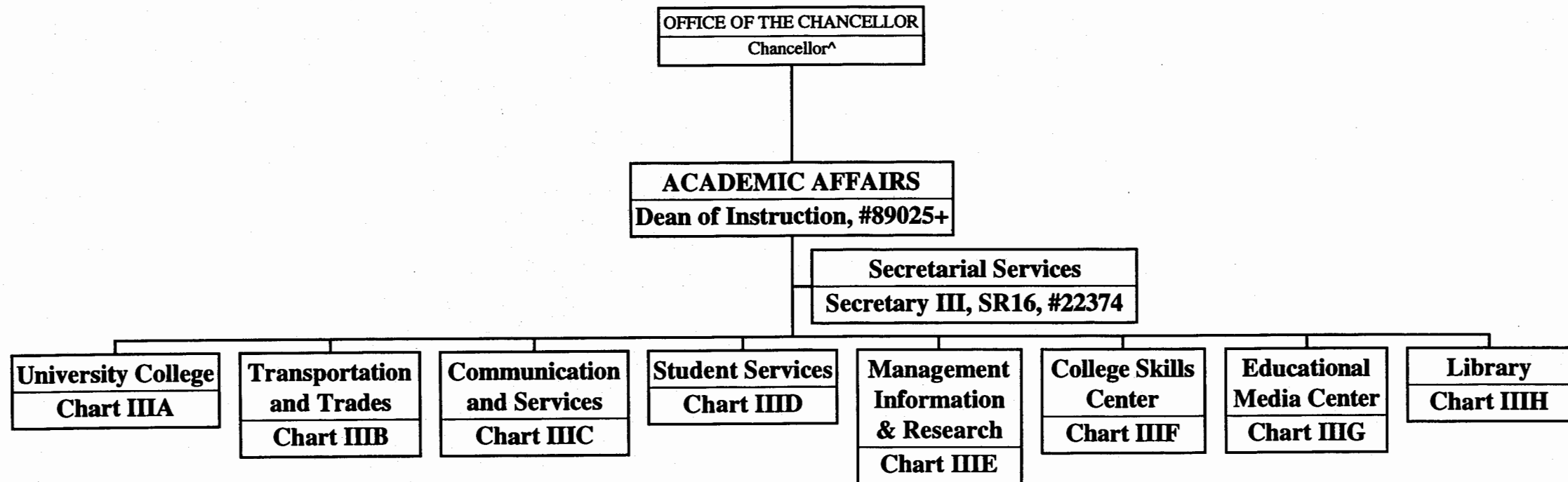


CHART UPDATED
DATE JUL 01 2004

^ Excluded from position count this chart
+ Position to be redescribed

General Fund Perm
2.00

STATE OF HAWAII
UNIVERSITY OF HAWAII
COMMUNITY COLLEGES
HONOLULU COMMUNITY COLLEGE
ACADEMIC AFFAIRS

Organization Chart

Chart IIIA

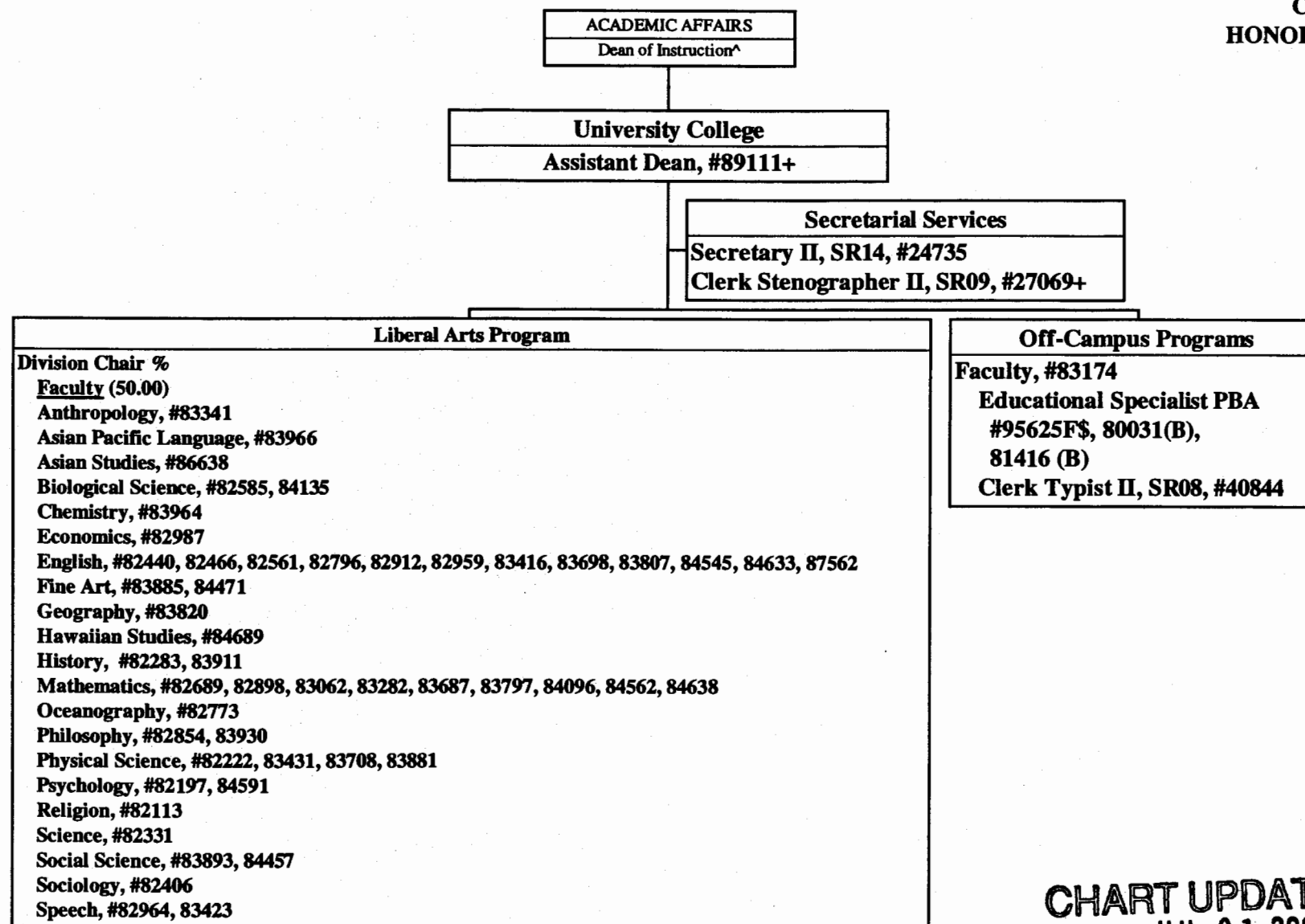


CHART UPDATED
JUL 01 2004
DATE _____

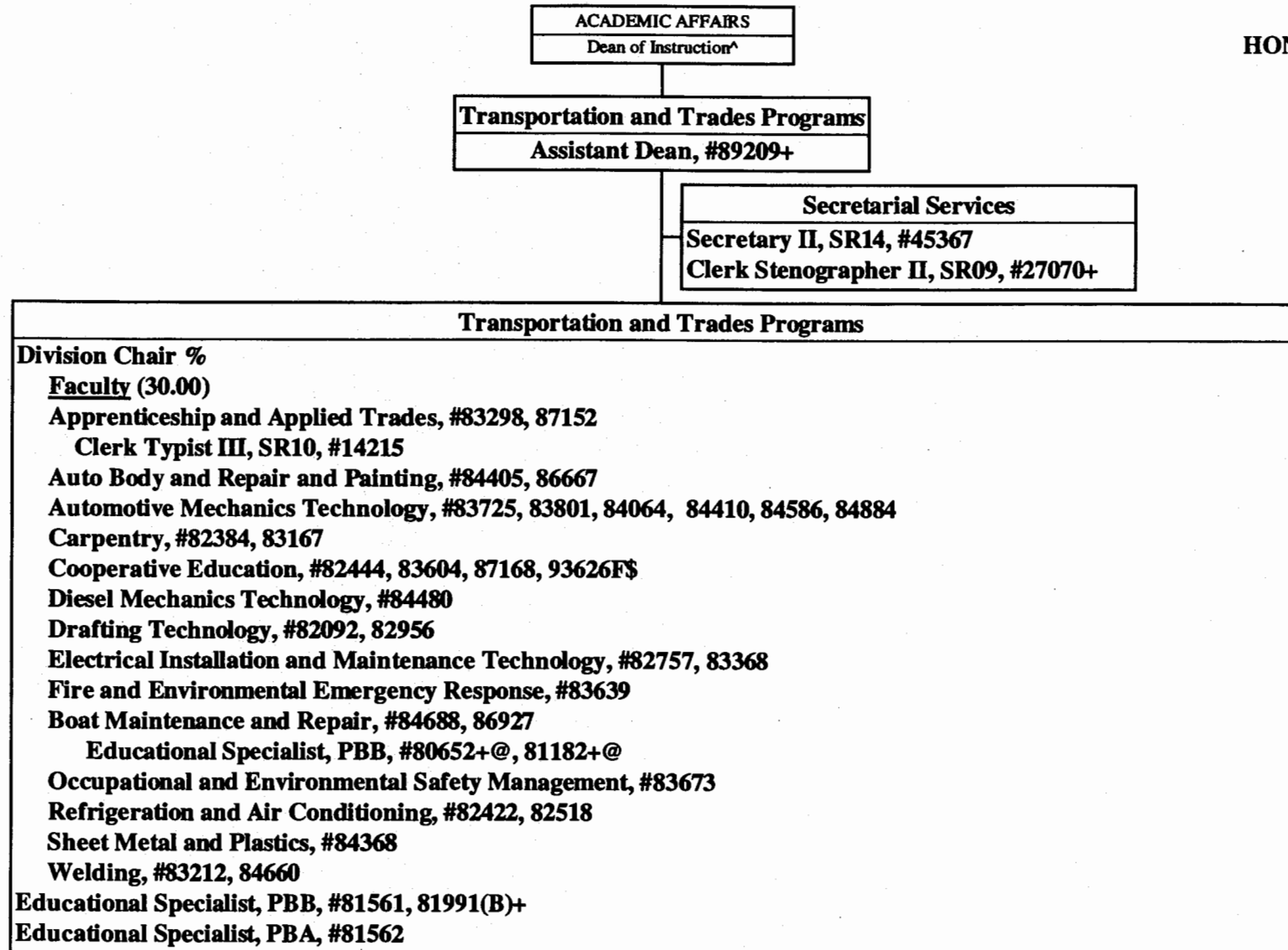
- ^ Excluded from position count this chart
+ To be redescribed
% Division Chair is appointed from any faculty position in the College.
Multiple Division Chairs may be appointed but each position in the
Division has only one immediate supervisor.
\$ To be established

	<u>Perm</u>
General Fund	56.00
(B) Special Funds	2.00

STATE OF HAWAII
UNIVERSITY OF HAWAII
COMMUNITY COLLEGES
HONOLULU COMMUNITY COLLEGE
ACADEMIC AFFAIRS

Organization Chart

Chart IIIB



- ^ Excluded from position count this chart
 + To be redescribed
 % Division Chair is appointed from any faculty position in the College.
 Multiple Division Chairs may be appointed but each position in the
 Division has only one immediate supervisor.
 @ Supervised by one of the faculty positions
 \$ To be established

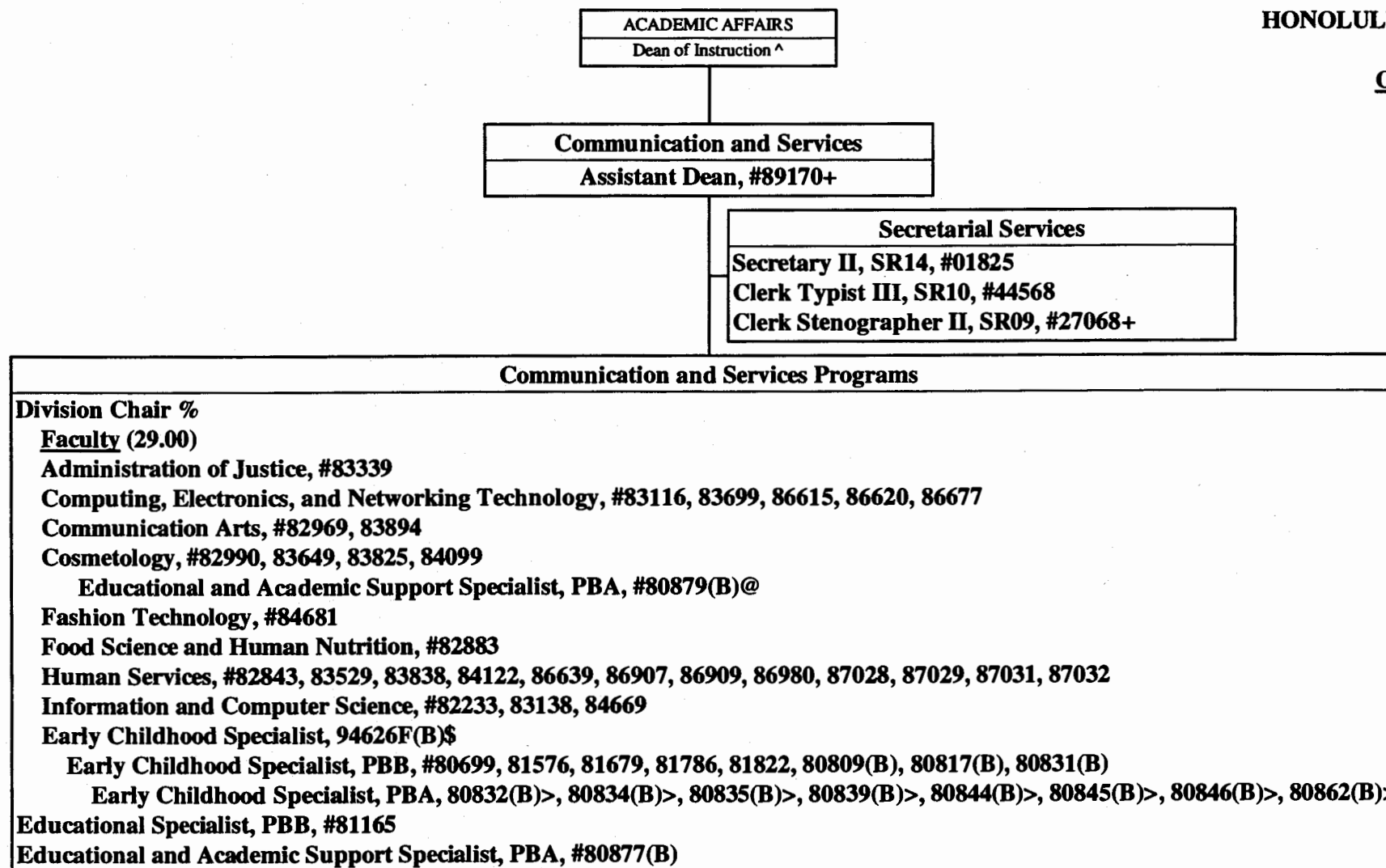
CHART UPDATED
JUL 01 2004
 DATE _____

	<u>Perm</u>
General Fund	38.00
(B) Special Funds	1.00

STATE OF HAWAII
UNIVERSITY OF HAWAII
COMMUNITY COLLEGES
HONOLULU COMMUNITY COLLEGE

Organization Chart

Chart III C



- ^ Excluded from position count this chart
 + To be redescribed
 % Division Chair is appointed from any faculty position in the College.
 Multiple Division Chairs may be appointed but each position in the
 Division has only one supervisor.
 @ Supervised by one of the faculty positions
 \$ To be established
 > Supervised by one of the senior APT positions

CHART UPDATED
DATE JUL 01 2004

	<u>Perm</u>
General Fund	39.00
(B) Special Funds	14.00

STATE OF HAWAII
UNIVERSITY OF HAWAII
COMMUNITY COLLEGES
HONOLULU COMMUNITY COLLEGE
ACADEMIC AFFAIRS

Organization Chart

Chart IIID

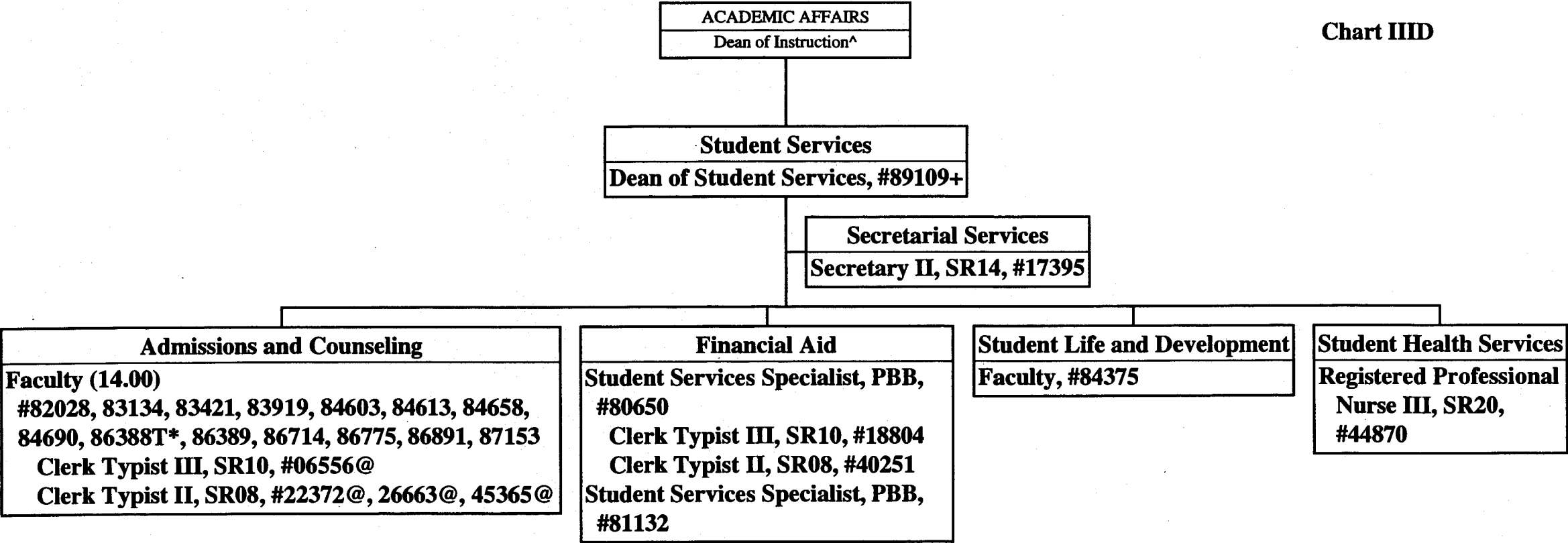


CHART UPDATED
DATE JUL 01 2004

^ Excluded from position count this chart
* Temporary Position
+ To be redescribed
@ Supervised by one of the faculty positions

	Perm	Temp
General Fund	25.00	1.00

STATE OF HAWAII
UNIVERSITY OF HAWAII
COMMUNITY COLLEGES
HONOLULU COMMUNITY COLLEGE
ACADEMIC AFFAIRS

Organization Chart

Chart III E

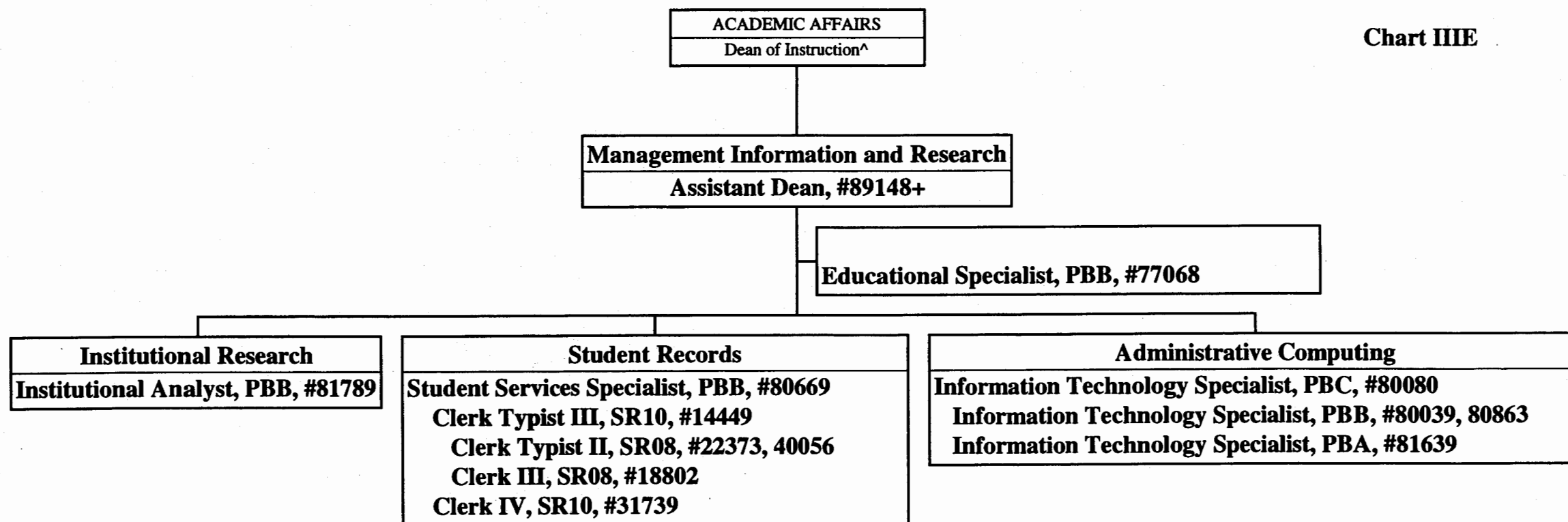


CHART UPDATED
JUL 01 2004
DATE _____

^ Excluded from position count this chart
+ To be redescribed

General Fund Perm 13.00

STATE OF HAWAII
UNIVERSITY OF HAWAII
COMMUNITY COLLEGES
HONOLULU COMMUNITY COLLEGE
ACADEMIC AFFAIRS

Organization Chart

Chart III F

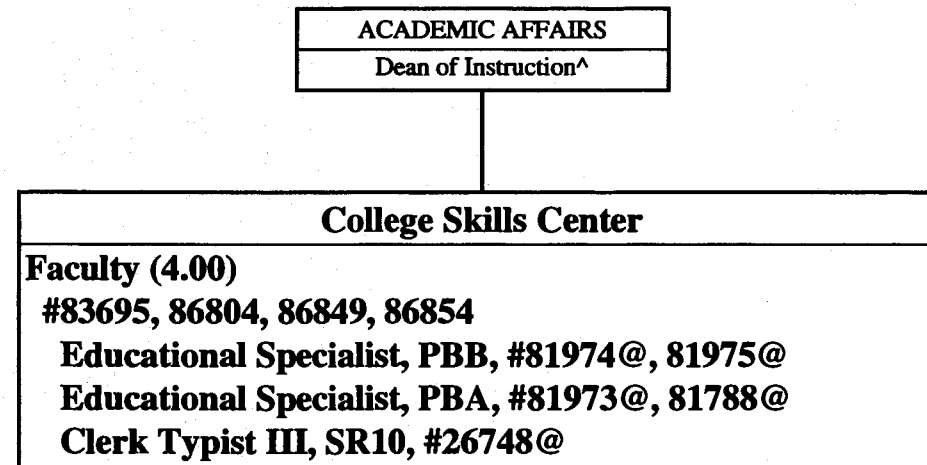


CHART UPDATED
DATE JUL 01 2004

^ Excluded from position count this chart
@ Supervised by one of the faculty positions

General Fund Perm 9.00

**STATE OF HAWAII
UNIVERSITY OF HAWAII
COMMUNITY COLLEGES
HONOLULU COMMUNITY COLLEGE
ACADEMIC AFFAIRS**

Organization Chart

Chart III G

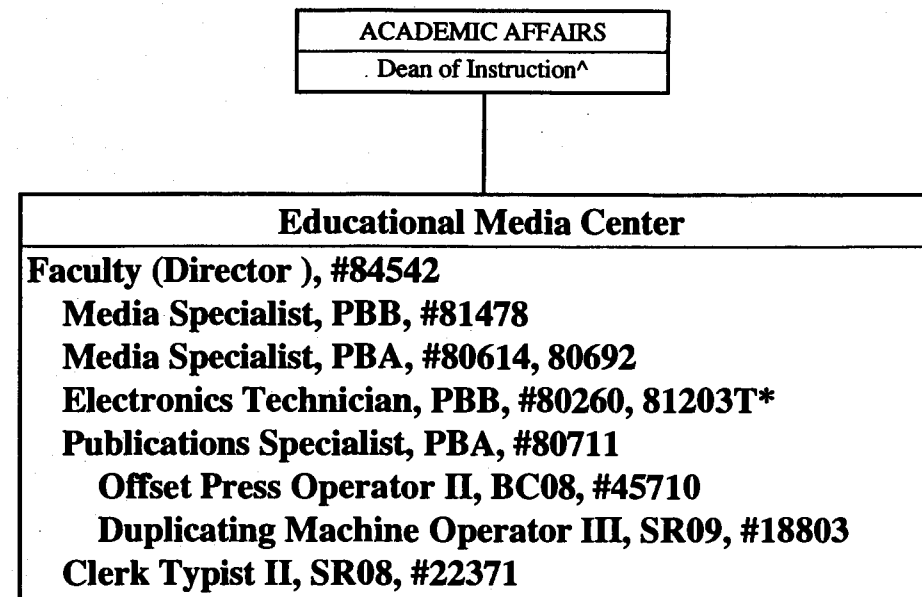


CHART UPDATED
DATE JUL 01 2004

^ Excluded from position count this chart
 * Temporary Position

	<u>Perm</u>	<u>Temp</u>
General Fund	9.00	1.00

STATE OF HAWAII
UNIVERSITY OF HAWAII
COMMUNITY COLLEGES
HONOLULU COMMUNITY COLLEGE
ACADEMIC AFFAIRS

Organization Chart

Chart IIIH

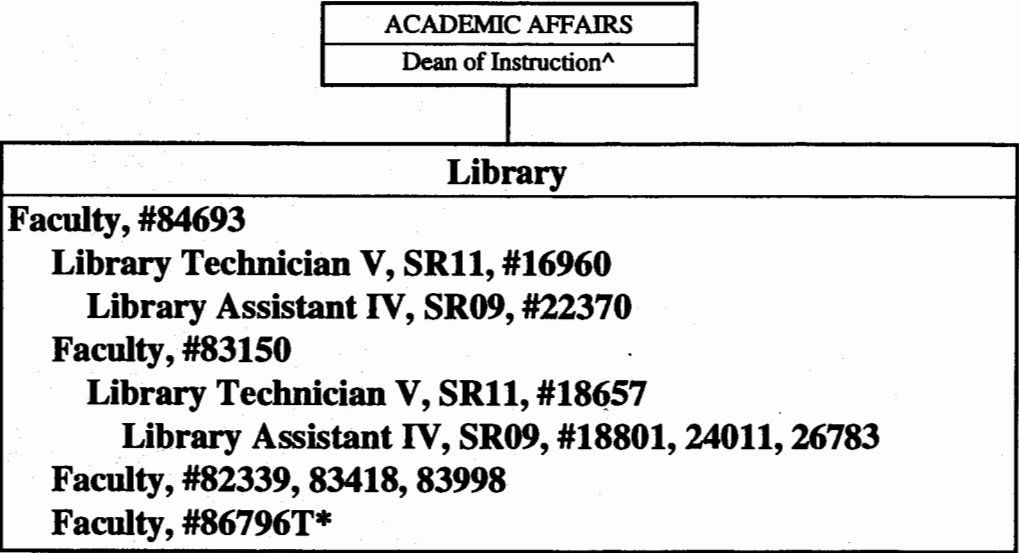


CHART UPDATED
DATE JUL 01 2004

	<u>Perm</u>	<u>Temp</u>
General Fund	11.00	1.00

^ Excluded from position count this chart
* Temporary Position

STATE OF HAWAII
UNIVERSITY OF HAWAII
COMMUNITY COLLEGES
HONOLULU COMMUNITY COLLEGE
PACIFIC CENTER FOR ADVANCED
TECHNOLOGY TRAINING

Organization Chart

Chart IV

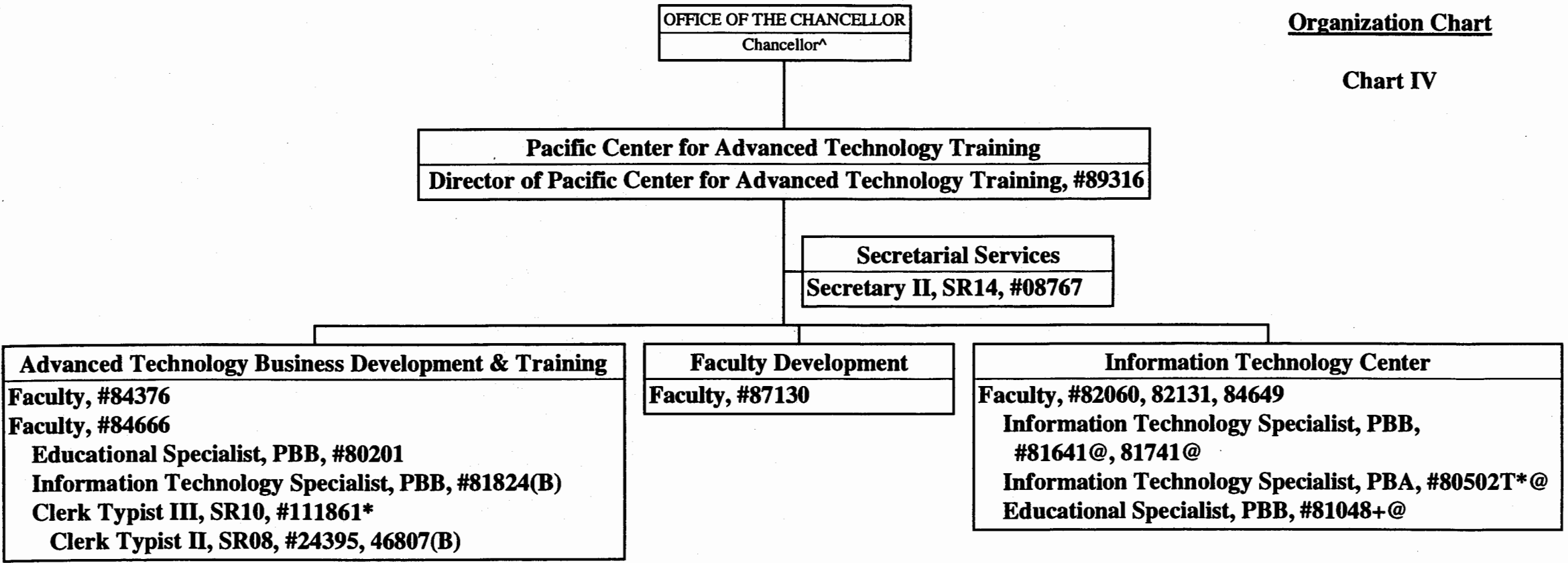


CHART UPDATED
JUL 01 2004
DATE _____

^ Excluded from position count this chart
* Temporary Position
@ Supervised by one of the faculty positions

	<u>Perm</u>	<u>Temp</u>
General Fund	13.00	2.00
(B) Special Funds	2.00	

STATE OF HAWAII
UNIVERSITY OF HAWAII
COMMUNITY COLLEGES
HONOLULU COMMUNITY COLLEGE
ADMINISTRATIVE SERVICES

Organization Chart

Chart V

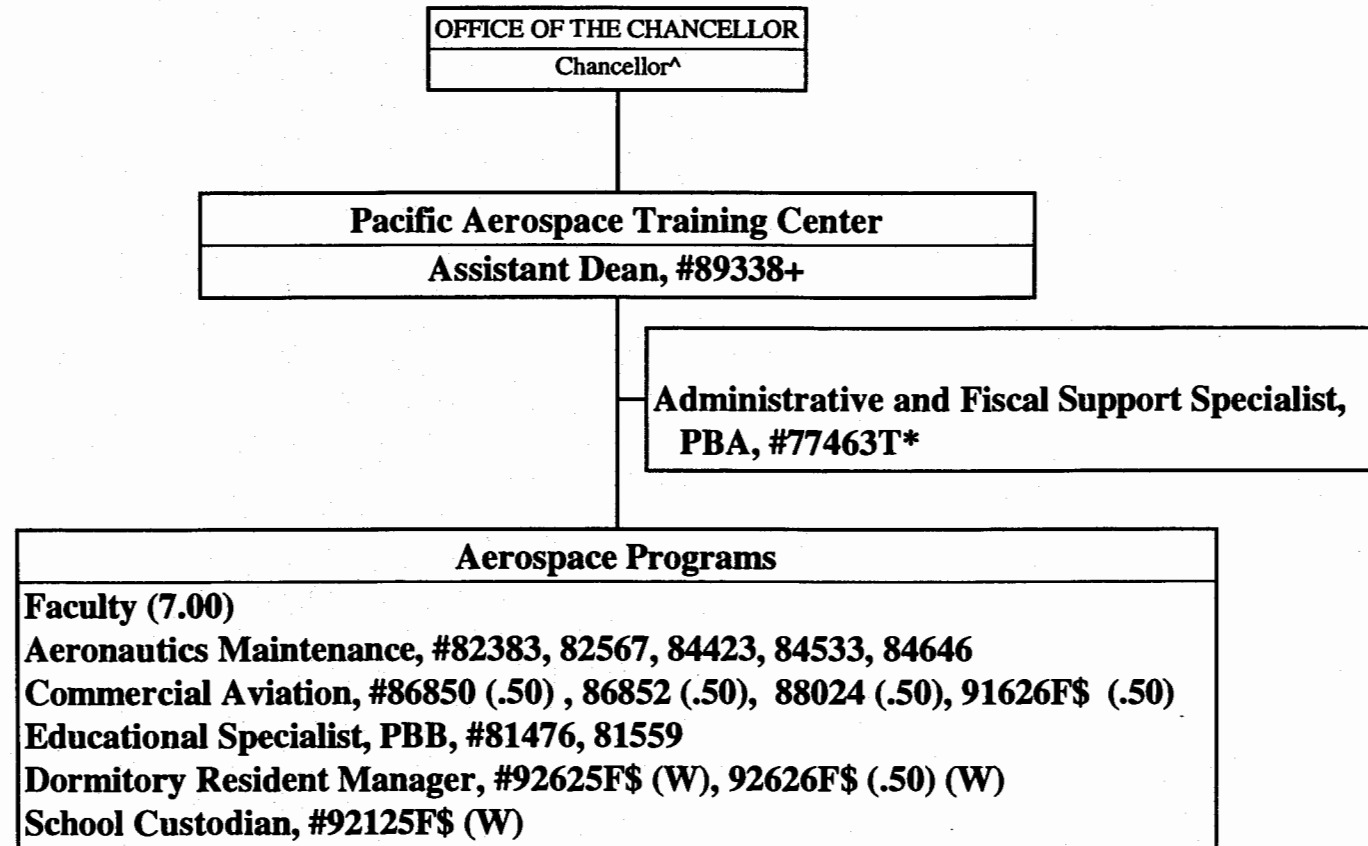


CHART UPDATED
DATE JUL 01 2004

^ Excluded from position count this chart
+ To be redescribed
\$ To be established

	<u>Perm</u>	<u>Temp</u>
General Fund	10.00	1.00
(W) Revolving Funds	2.50	

STATE OF HAWAII
UNIVERSITY OF HAWAII
COMMUNITY COLLEGES
HONOLULU COMMUNITY COLLEGE
ADMINISTRATIVE SERVICES

Organization Chart

Chart VI

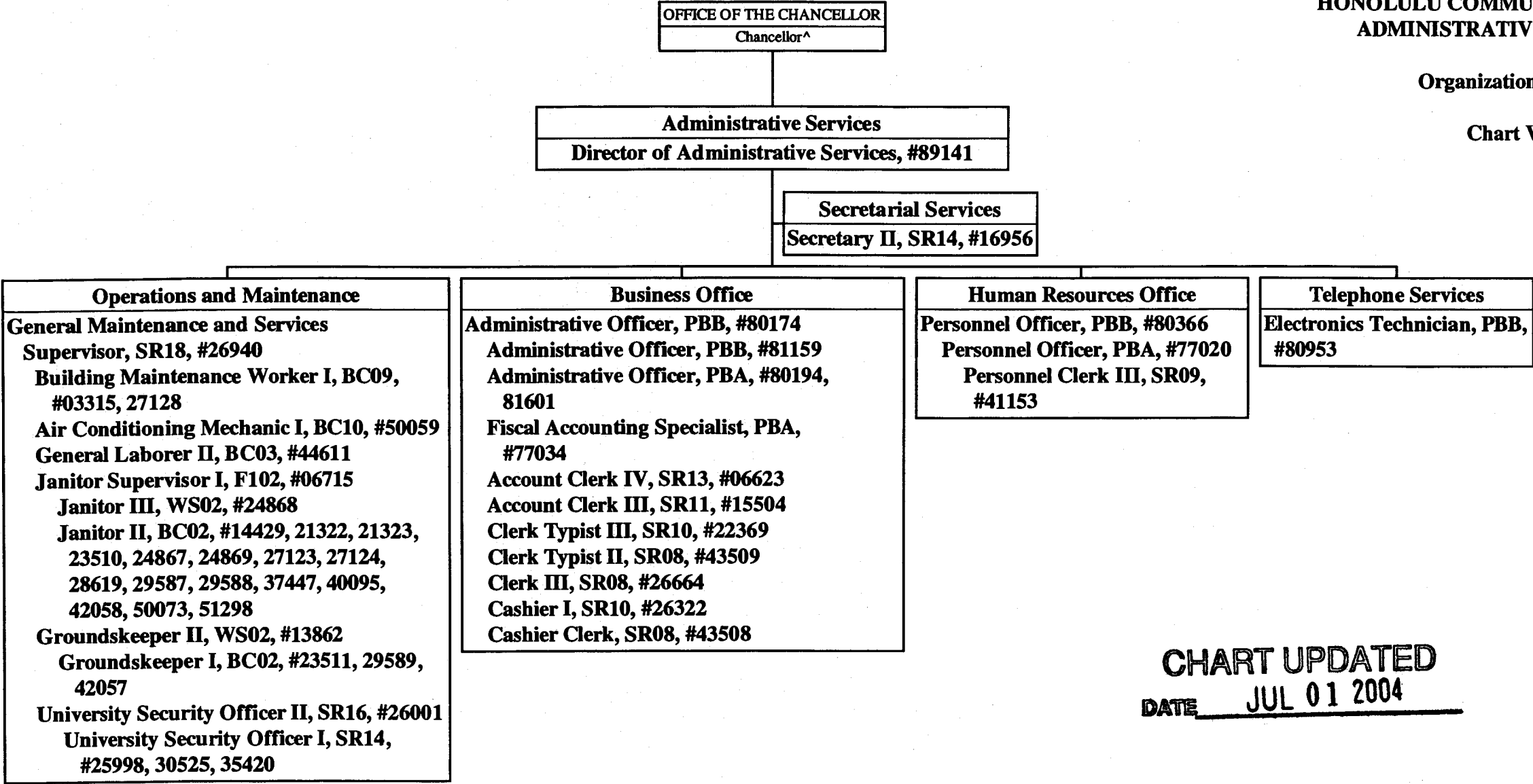


CHART UPDATED
DATE JUL 01 2004

General Fund Perm
49.00

^ Excluded from position count this chart

STATE OF HAWAII
UNIVERSITY OF HAWAII
COMMUNITY COLLEGES
HONOLULU COMMUNITY COLLEGE

Organization Chart

Chart I

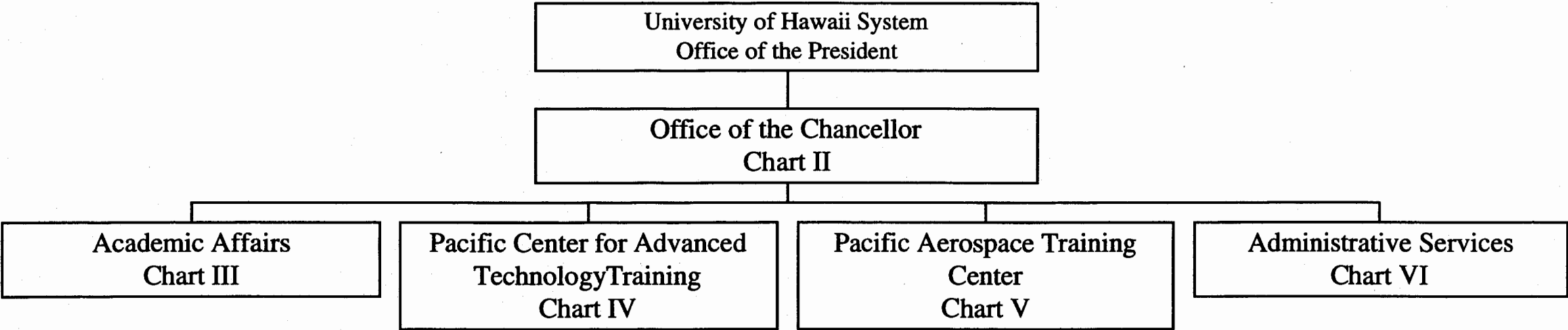


CHART UPDATED

DATE JUL - 1 2004

SUPERSEDED

Date JUN 21 2005

	<u>Perm</u>	<u>Temp</u>
General Fund	280.00	7.00
(B) Special Funds	19.00	
(W) Revolving Funds	2.50	

STATE OF HAWAII
UNIVERSITY OF HAWAII
COMMUNITY COLLEGES
HONOLULU COMMUNITY COLLEGE
OFFICE OF THE CHANCELLOR

Organization Chart

Chart II

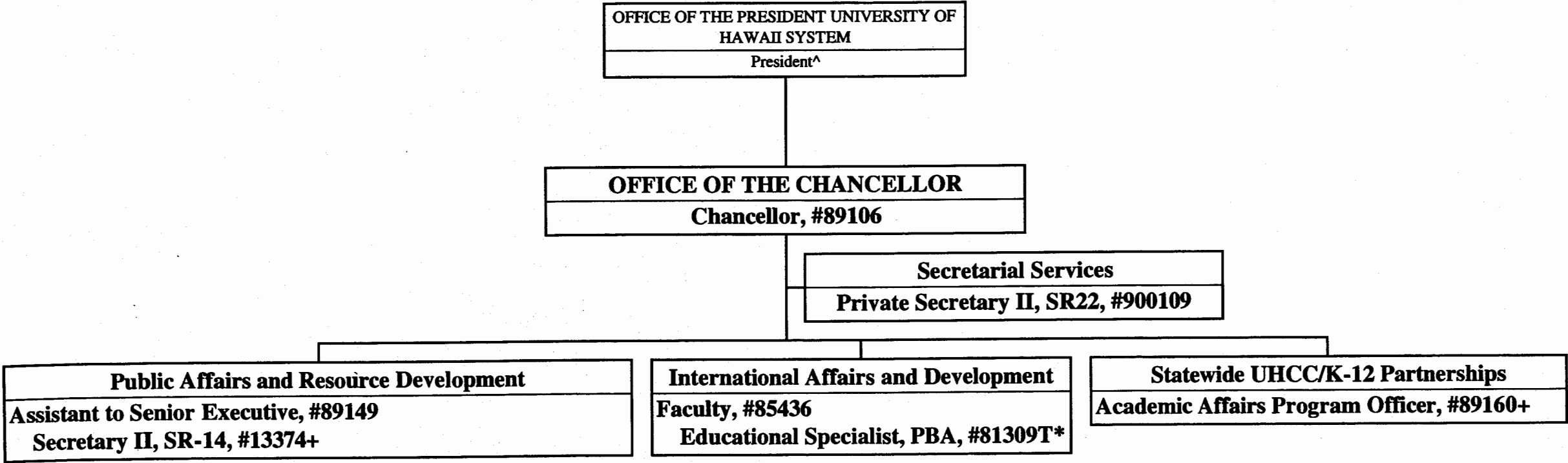


CHART UPDATED
JUL 01 2004
DATE _____

SUPERSEDED
Date JUN 21 2005

- ^ Excluded from position count this chart
* Temporary Position
+ Position to be redescribed

	<u>Perm</u>	<u>Temp</u>
General Fund	6.00	1.00