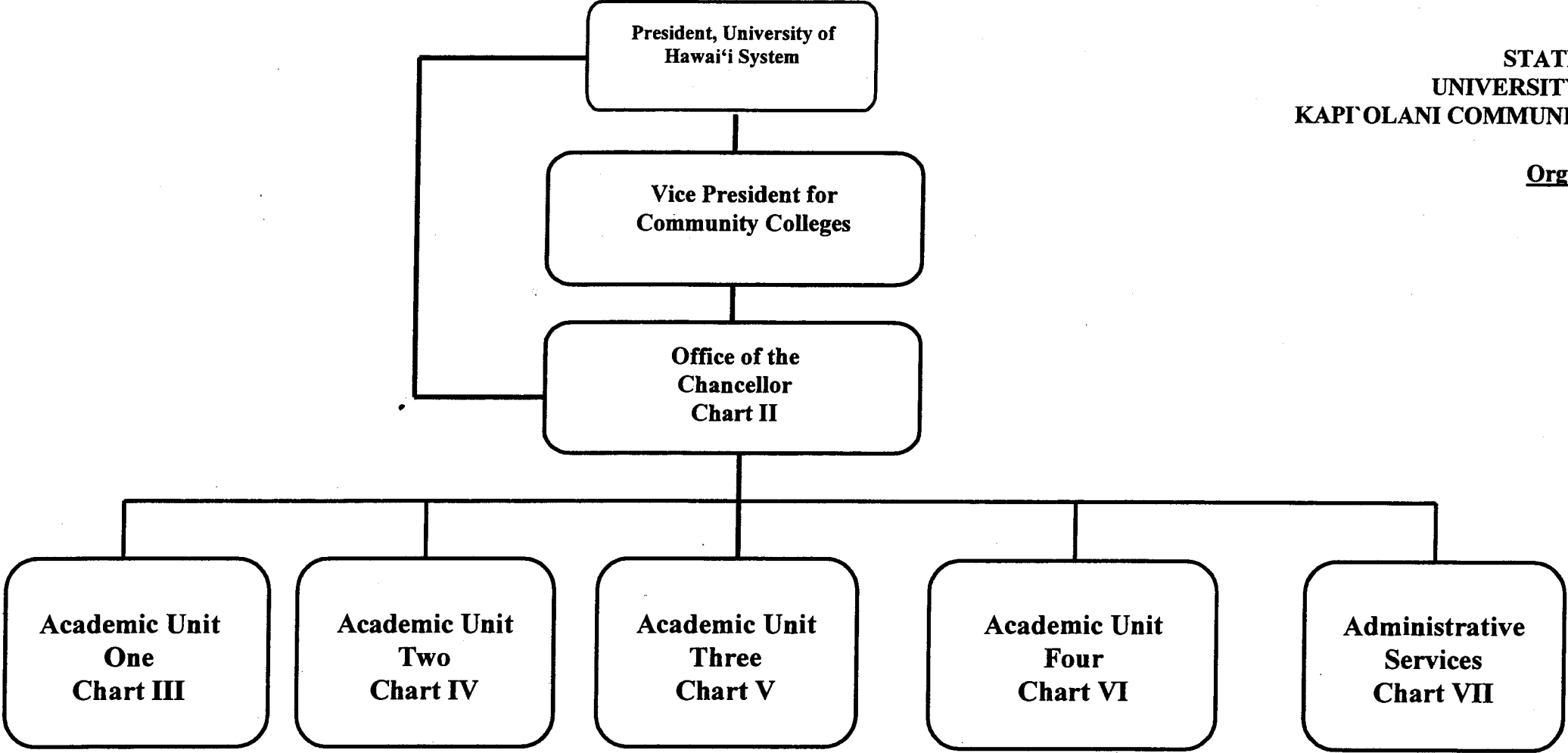


STATE OF HAWAII  
UNIVERSITY OF HAWAII  
KAPOLANI COMMUNITY COLLEGE

Organization Chart

Chart I



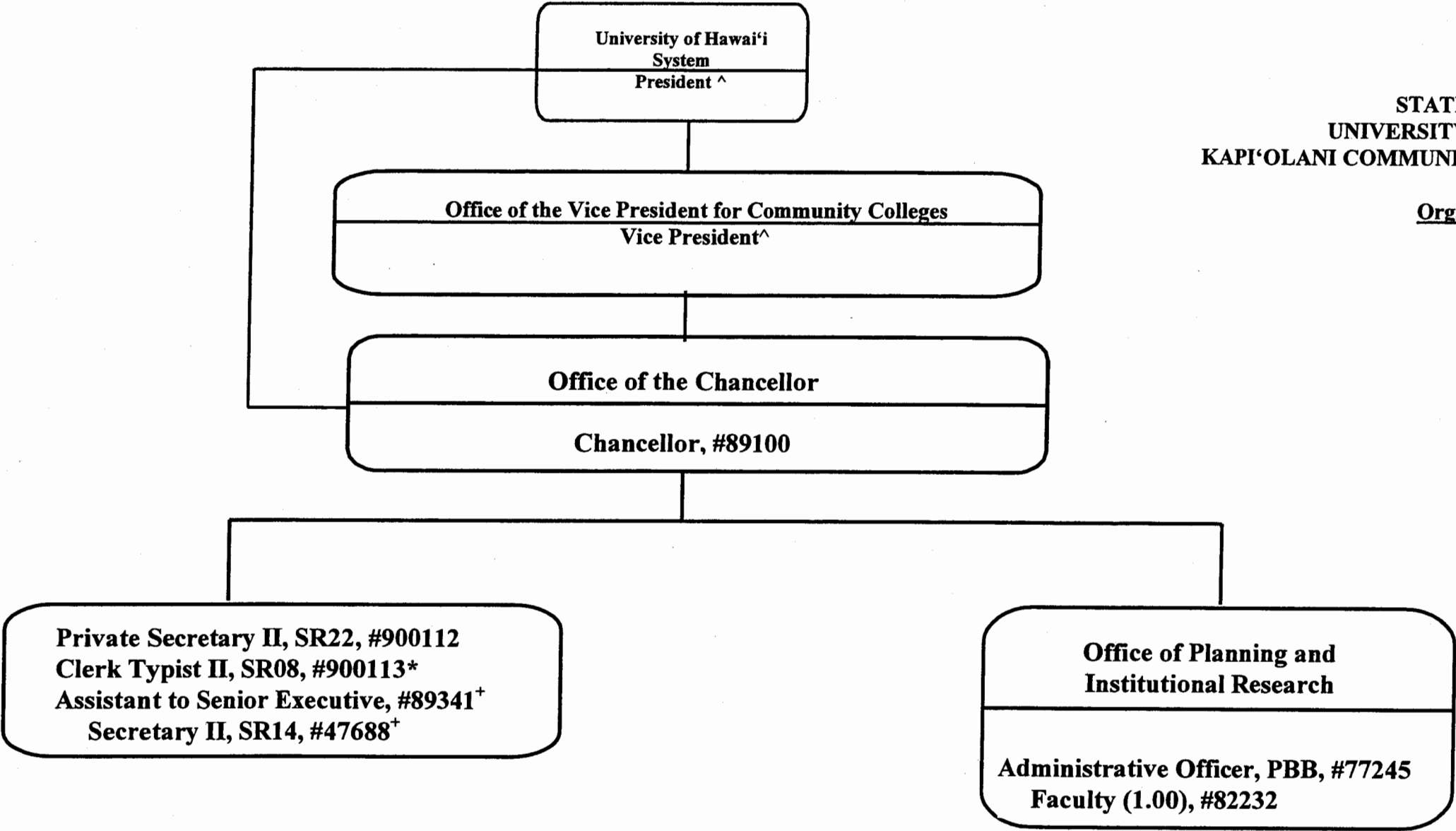
	<u>Perm</u>	<u>Temp</u>
General Fund	342.00	27.50
(B) Special Funds	24.00	

JUN 21 2005

STATE OF HAWAI'I  
UNIVERSITY OF HAWAI'I  
KAPI'OLANI COMMUNITY COLLEGE

Organization Chart

Chart II



^ Excluded from position count this chart  
\*Temporary position  
+Position to redescrbed

General Fund

<u>Perm</u>	<u>Temp</u>
6.00	1.00

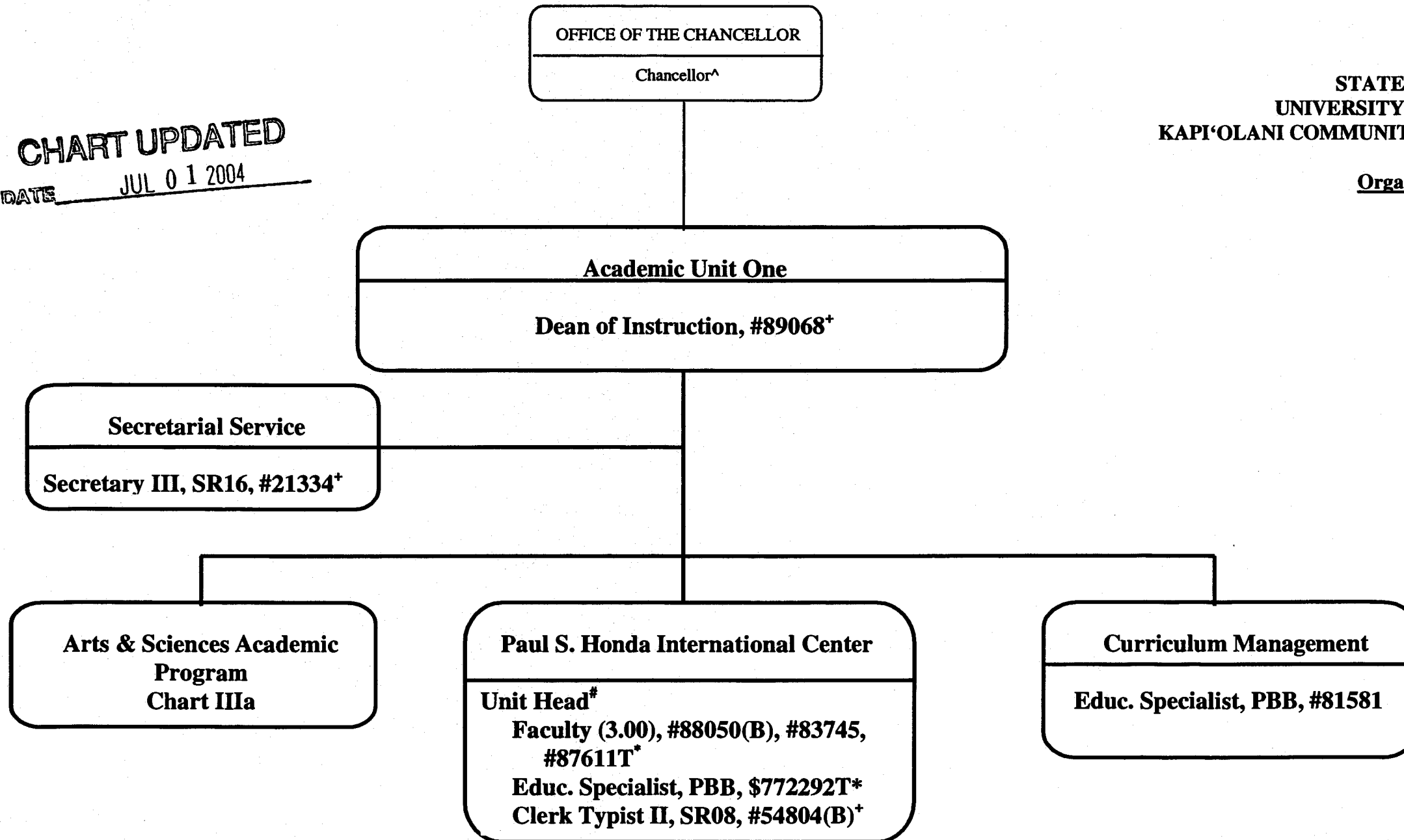
JUN 21 2005

CHART UPDATED  
DATE JUL 01 2004

STATE OF HAWAI'I  
UNIVERSITY OF HAWAI'I  
KAPI'OLANI COMMUNITY COLLEGE

Organization Chart

Chart III



^ Excluded from position count this chart

# Unit Head is appointed from among the faculty positions

\* Temporary Position

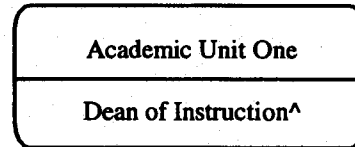
+ To be redescribed & submitted for classification review

General Fund  
(B) Special Funds

Perm  
4.00  
2.00

Temp  
2.00

CHART UPDATED  
JUL 01 2004  
DATE \_\_\_\_\_



STATE OF HAWAI'I  
UNIVERSITY OF HAWAI'I  
KAPI'OLANI COMMUNITY COLLEGE

Organization Chart

Chart IIIa

Arts & Sciences Academic Program	
Humanities	
Chairperson %	
Faculty (24.00)	
Full-time:	#82052, #82429, #82607, #82631, #82803, #82840, #82876, #82925, #82937, #82983, #83094, #83809, #83967, #84470, #84882, #84971, #84974, #86602, #86937, #87402, #87404, #86696T*, 87072T*, #87074T*
Information Technology Specialist, PBA,	#81068T*
Language Arts	
Chairperson %	
Faculty (34.00)	
Full-time:	#82135, #82178, #82231, #82447, #82555, #82653, #82776, #83123, #83308, #83447, #83521, #83559, #83783, #83795, #83810, #83903, #84327, #84409, #84623, #86594, #86595, #86596, #86604, #86798, #86803, #86809, #86945, #86960, #87084T*, #87102, #87120, #87143T*, #87583T*
Part-time:	#82540 (0.50 FTE), #86799 (0.50 FTE)
Mathematics/Science	
Chairperson %	
Faculty (27.00)	
Full-time:	#82031, #82394, #82492, #82910, #82981, #83096, #83262, #83357, #83688, #83733, #83939, #83974, #84458, #84836, #86592, #86593, #86600, #86606, #86718, #86754, #86827, #86830, #86845, #86959, #87401, #86947T*, #88032T*
Educational Specialist, PBA,	#81246
Social Sciences	
Chairperson %	
Faculty (11.00)	
Full-time:	#82152, #82706, #82935, #83492, #83560, #83642, #84972, #84973, #86599, #86938, #87403
Support Services Unit	
Unit Head*	
Faculty (5.50)	#82364, #83787, #86704, #82685, #82068, #86757 (0.50FTE)
Educational Specialist, PBB,	#80778 (B)
Secretary II, SR14,	#22313
Clerk Steno II, SR09,	#34661
Clerk-Typist II, SR08,	#22310, #26658, #47612 (0.50 FTE), #47900 (0.50 FTE), #84370 (.50 FTE)

^ Excluded from position count this chart

% Chairperson is appointed from among the faculty positions

\* Unit Head is named from among the Chairpersons

\* Temporary Position

+ To be redescribed & submitted for classification review

General Fund  
(B) Special Funds

Perm  
100.00  
1.00

Temp  
9.00

STATE OF HAWAII  
UNIVERSITY OF HAWAII  
KAPI'OLANI COMMUNITY COLLEGE

Organization Chart

Chart IV

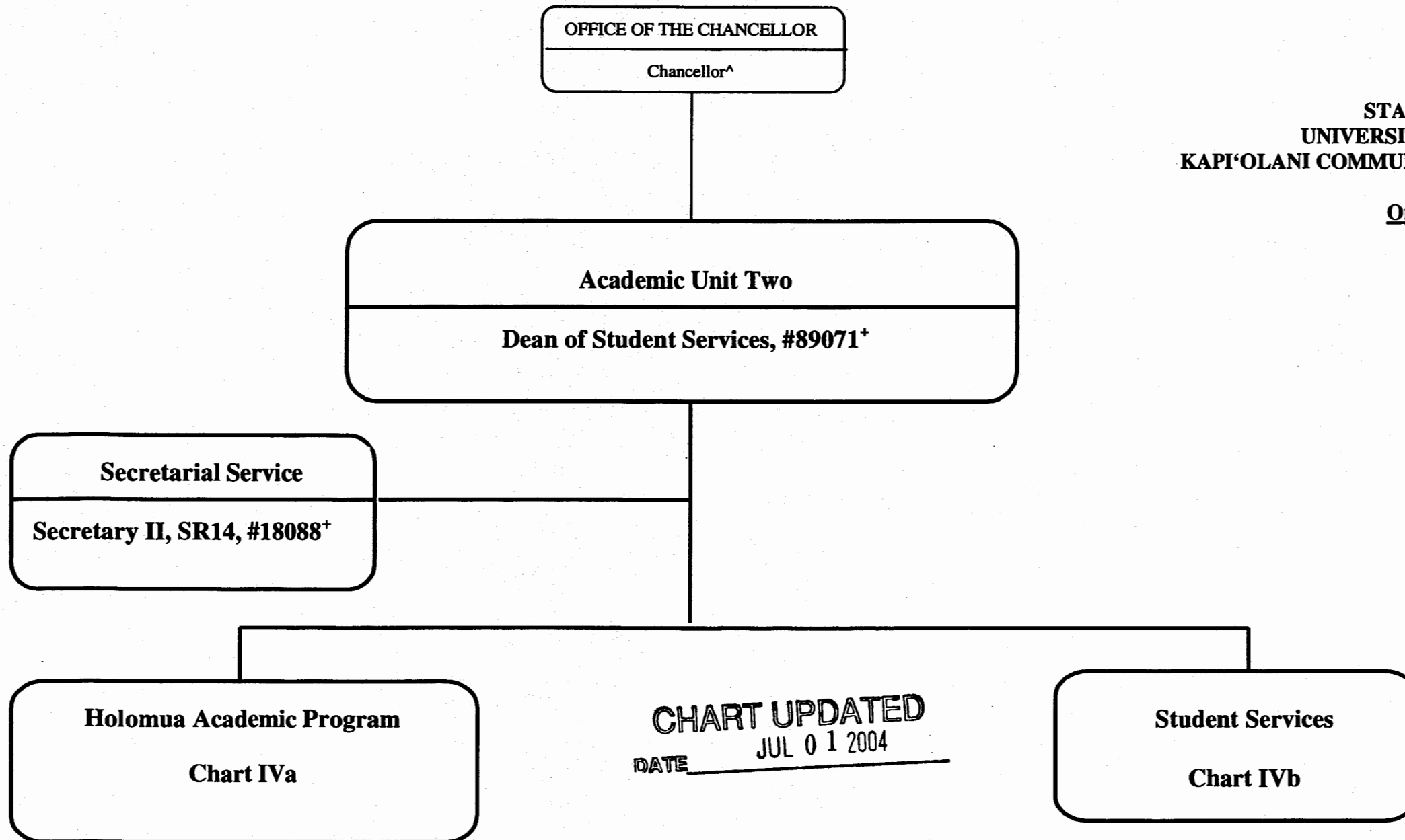


CHART UPDATED  
JUL 01 2004  
DATE \_\_\_\_\_

^ Excluded from position count this chart

\*To be redescribed & submitted for classification review

General Fund

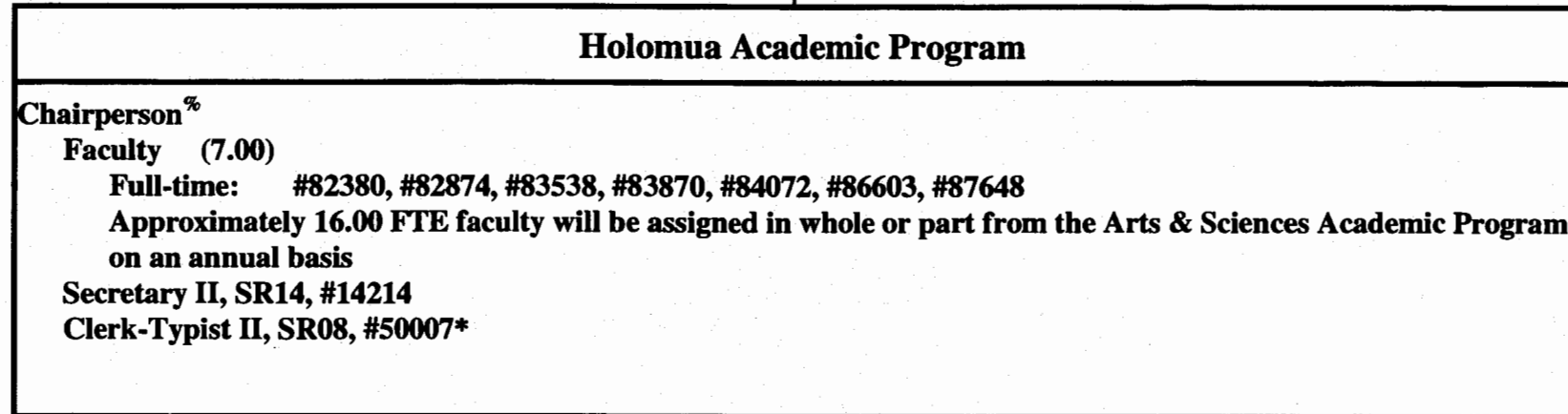
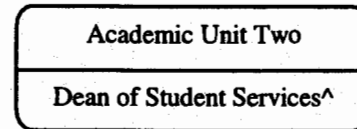
Perm  
2.00

Temp

STATE OF HAWAI'I  
UNIVERSITY OF HAWAI'I  
KAPI'OLANI COMMUNITY COLLEGE

Organization Chart

Chart IVa



**CHART UPDATED**  
JUL 01 2004  
DATE \_\_\_\_\_

^ Excluded from position count this chart

\* Temporary Position

% Chairperson is appointed from among the faculty positions

General Fund

Perm  
8.00

Temp  
1.00

CHART UPDATED

DATE JUL 01 2004

Academic Unit Two

Dean of Student Services^

STATE OF HAWAII  
UNIVERSITY OF HAWAII  
KAPI'OLANI COMMUNITY COLLEGE

Organization Chart

Chart IVb

Student Services

Faculty (2.50)

#83453 (0.50 FTE), #87649, #83387

Special Services Unit Head\*

Clerk-Steno II, SR09, #27004+

Educational Specialist, PBA, #81761+

Student Services Specialist, PBA, #96660F\*\* (0.50 FTE)

Kekaulike Information and Service Center

Student Services Specialist, PBB, #81615+

Student Services Specialist, PBB, #80257+

Clerk III, SR10, #11485+, #18086+, #44254+, #50010\*, #54813+

Clerk Typist II, SR08, #900011\*\*

Student Services Specialist, PBB, #83216+

Student Services Specialist, PBB, #77331 (B)+

Clerk-Typist III, SR10, #09169+, #22315+

Clerk-Typist II, SR08, #41320(B)+, #44160+, #900010\*\*

Student Services Specialist, PBB, #81547+

Student Services Specialist, PBB, #81878+

Student Services Specialist, PBA, #81887+

Clerk-Typist III, SR10, #34675+

Instructor (Counselor), #83329+

^ Excluded from position count this chart

\* Temporary Position

# Unit head is appointed from among the faculty positions

+ To be redescribed & submitted for classification review

General Fund  
(B) Special Fund

Perm  
19.50  
2.00

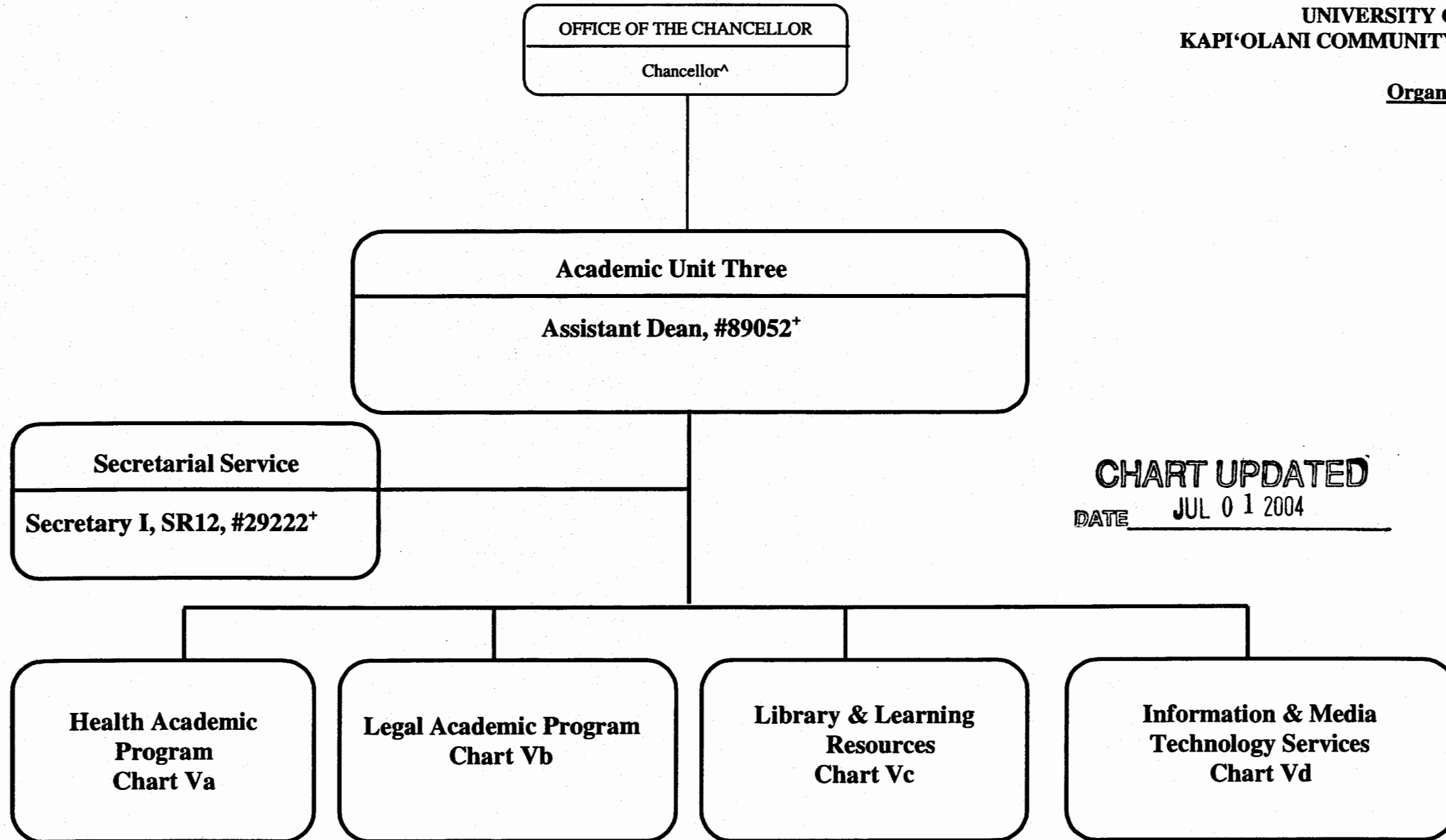
Temp  
3.50

STATE OF HAWAII  
UNIVERSITY OF HAWAII  
KAPI'OLANI COMMUNITY COLLEGE

Organization Chart

Chart V

CHART UPDATED  
DATE JUL 01 2004



^ Excluded from position count this chart

+ To be redescribed & submitted for classification review

General Fund

Perm  
2.00

Temp



CHART UPDATED  
DATE JUL 01 2004

Academic Unit Three

Assistant Dean ^

STATE OF HAWAII  
UNIVERSITY OF HAWAII  
KAPI'OLANI COMMUNITY COLLEGE

Organization Chart

Chart Va

Health Academic Program

Emergency Medical Services

Chairperson %

Secretary II, SR14, #37300

Clerk-Typist II, SR08, #35641, 33868 (0.50 FTE)

Faculty (7.50) primarily Oahu based

Full-time: #86705, #86807, #86808, #87047, #87110, #87440, #84754

Part-time: #88096 (0.25 FTE), #88098 (0.25 FTE)

Faculty (2.00) primarily Hawaii based

Full-time: #84739, #84740

Clerk-Typist II, SR08, #33867<sup>@</sup>

Faculty (1.00) primarily Maui based

Full-time: #85871

Clerk-Typist II, SR08, #33866 (0.50 FTE)

Health Sciences

Chairperson %

Secretary II, SR14, #32952

Clerk-Steno II, SR09, #40964 (0.50 FTE)

Faculty (15.10)

Full-time: #82121, #82162, #82405, #82576, #83310, #83321, #83667, #84223, #84326, #85821, #86384, #86385, #86752, #86882, #86886

Part-time: #87052 (0.10 FTE)

Nursing

Chairperson %

Secretary II, SR14, #18093

Clerk-Typist II, SR08, #42015

Faculty (29.50)

Full-time: #82064, #82244, #82513, #84487, #84629, #84655, #86737, #86738, #86740, #86743, #86746, #86747, #86749, #86750,

#86751, #86774, #86776, #86777, #86778, #86832, #86833, #86834, #86836, #86837, #86838, #86839, #86840

Part-time: #84308 (.50 FTE), #86736 (.50 FTE), #86739 (.50 FTE), #88072 (.50 FTE), #88074 (.50 FTE)

Support Services

Faculty (1.00), #87612T\*

Educational Specialist, PBB, #77025(B)

^ Excluded from position count this chart

\* Temporary Position

% Chairperson is appointed from among the faculty positions

@ Supervised by one of the faculty positions

General Fund  
(B) Special Funds

Perm  
62.60  
1.00

Temp  
1.00

STATE OF HAWAII  
UNIVERSITY OF HAWAII  
KAPI'OLANI COMMUNITY COLLEGE

Organization Chart

Chart Vb

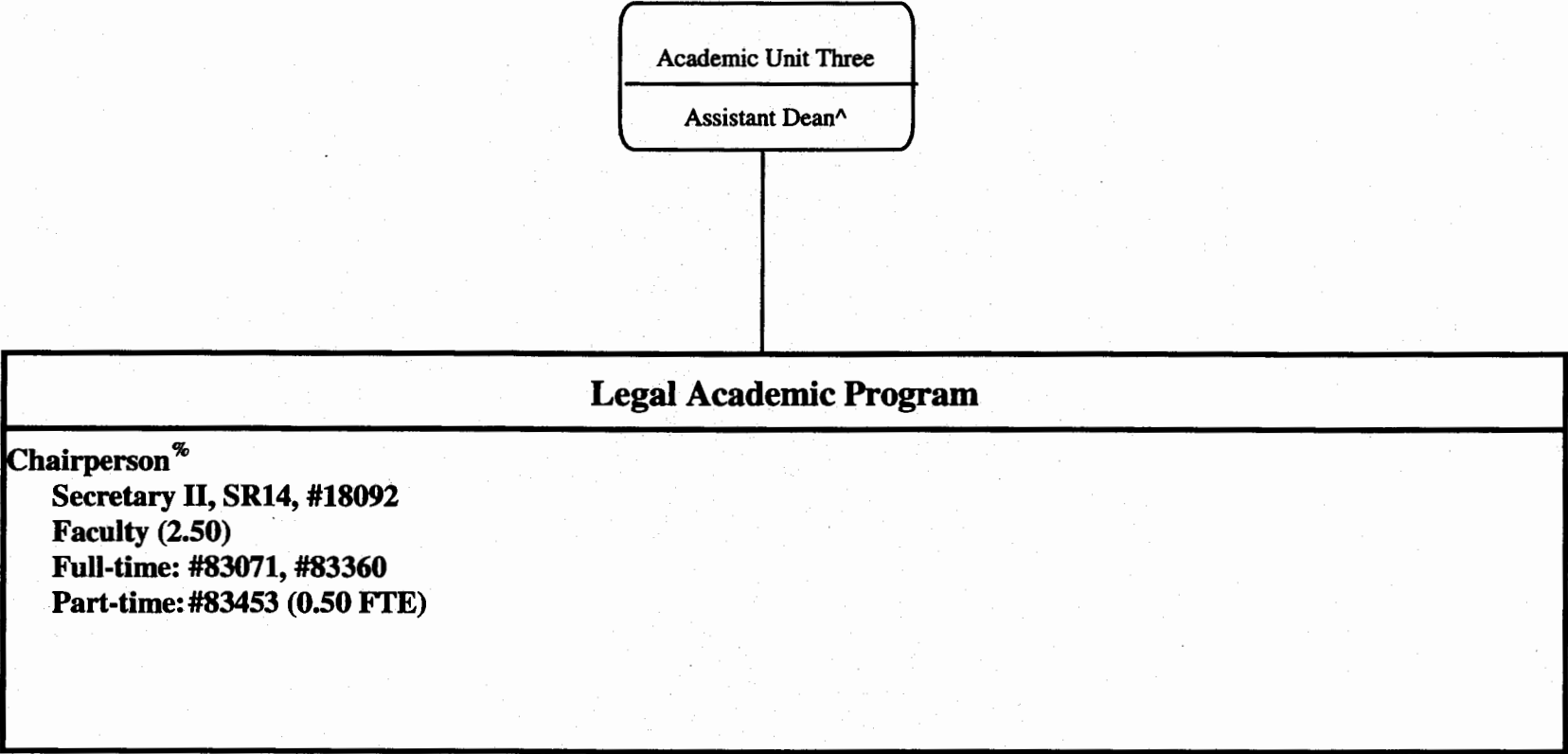


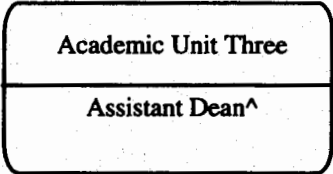
CHART UPDATED  
JUL 01 2004  
DATE \_\_\_\_\_

^ Excluded from position count this chart  
% Chairperson is appointed from among the faculty positions

General Fund

Perm  
3.50

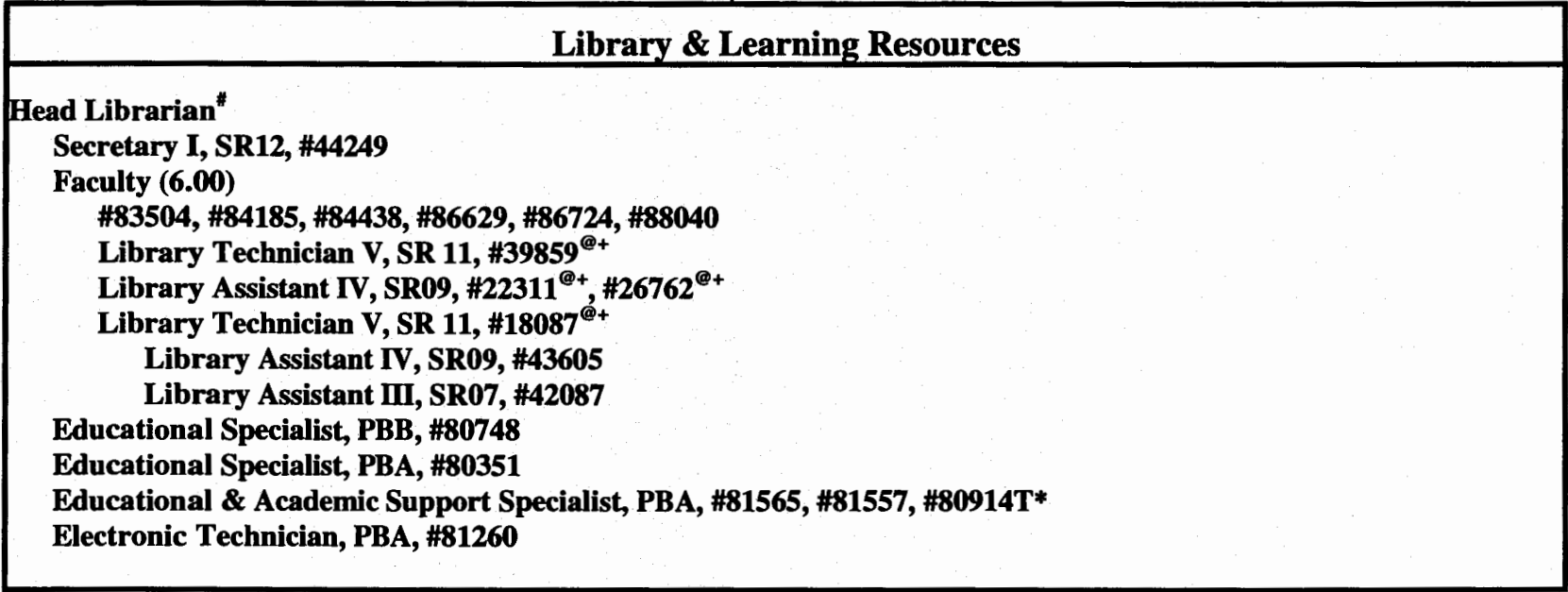
Temp



STATE OF HAWAI'I  
UNIVERSITY OF HAWAI'I  
KAPI'OLANI COMMUNITY COLLEGE

Organization Chart

Chart Vc



^ Excluded from position count this chart  
\* Temporary position  
# Head Librarian is appointed from among the faculty positions  
@ Supervised by one of the faculty positions  
+ To be redescribed & submitted for classification review

	<u>Perm</u>	<u>Temp</u>
General Fund	18.00	1.00

CHART UPDATED  
DATE JUL 01 2004

STATE OF HAWAII  
UNIVERSITY OF HAWAII  
KAPI'OLANI COMMUNITY COLLEGE

Organization Chart

Chart Vd

**CHART UPDATED**  
JUL 01 2004  
DATE \_\_\_\_\_

Academic Unit Three

Assistant Dean^

**Information & Media Technology Services**

**Unit Head#**

**Faculty (3.00)**

**#82386, #86711(B), #87603**

**Information Technology Specialist, PBC, #81069**

**Clerk III, SR08, #54823, #54825**

**Information Technology Specialist, PBC, #81384**

**Information Technology Specialist, PBB, #80529, #80340, #81627**

**Information Technology Specialist, PBA, #81220T\***

**Information Technology Specialist, PBB, #81654**

**Electronic Technician, PBB, #80034**

**Electronic Technician, PBA, #81277**

**Audio Visual Technician I, BC07, #47350 (0.50 FTE)**

**Media Specialist, PBB, #80694**

**Graphic Artist, PBB, #81060**

**Offset Press Operator III, BC09, #39797**

**Offset Press Operator II, BC08, #47346 (0.50 FTE)**

**Clerk-Steno III, SR11, #21321**

**Clerk-Typist II, SR08, #42014\*, #48451**

^ Excluded from position count this chart

\* Temporary position

# Unit Head is appointed from among the faculty positions

General Fund  
Special Fund

Perm  
18.00  
1.00

Temp  
2.00

STATE OF HAWAII  
UNIVERSITY OF HAWAII  
KAPI'OLANI COMMUNITY COLLEGE

Organization Chart

Chart VI

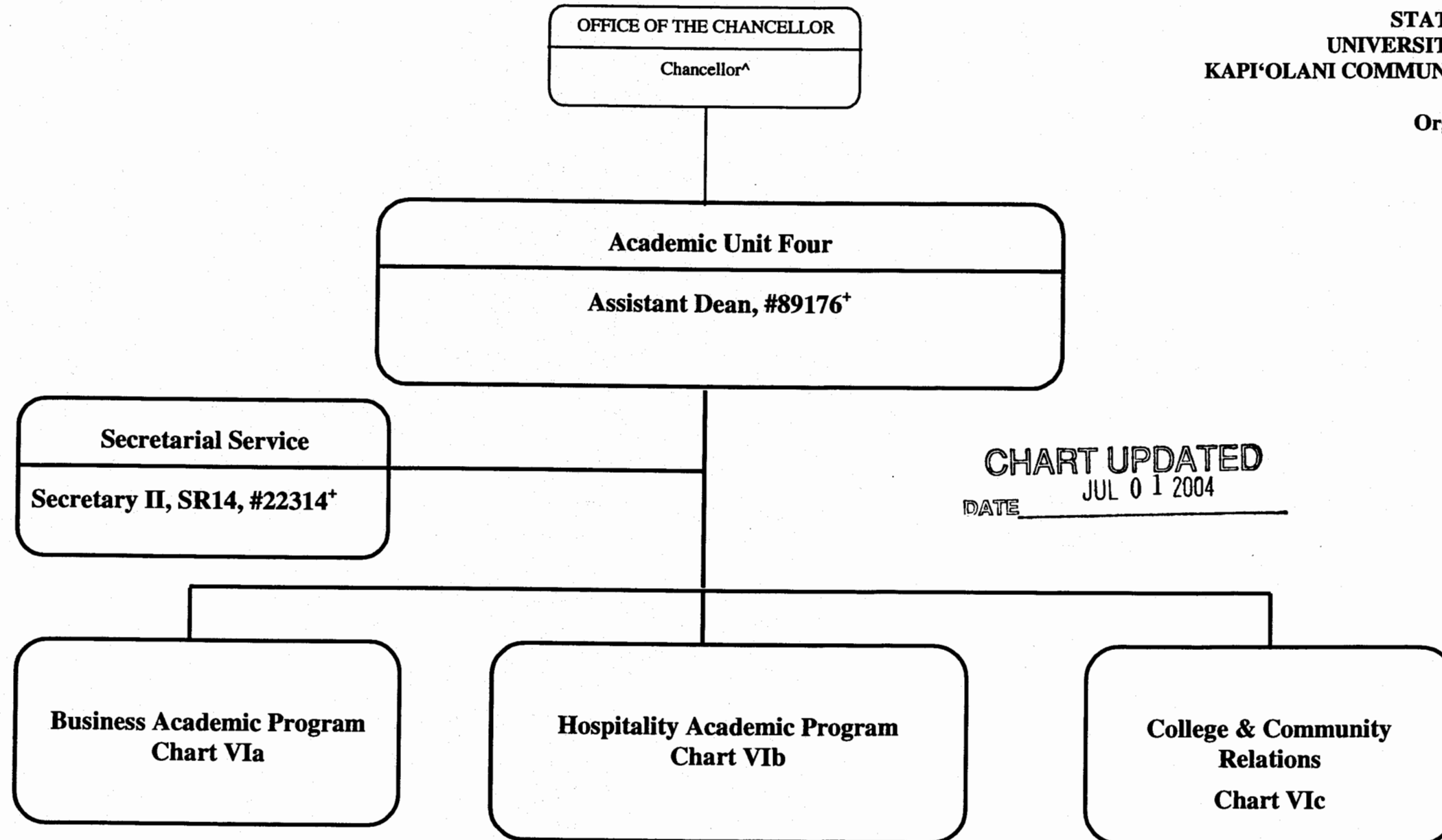


CHART UPDATED  
JUL 01 2004  
DATE \_\_\_\_\_

^ Excluded from position count this chart

+ To be redescribed & submitted for classification review

General Fund

Perm  
2.00

Temp

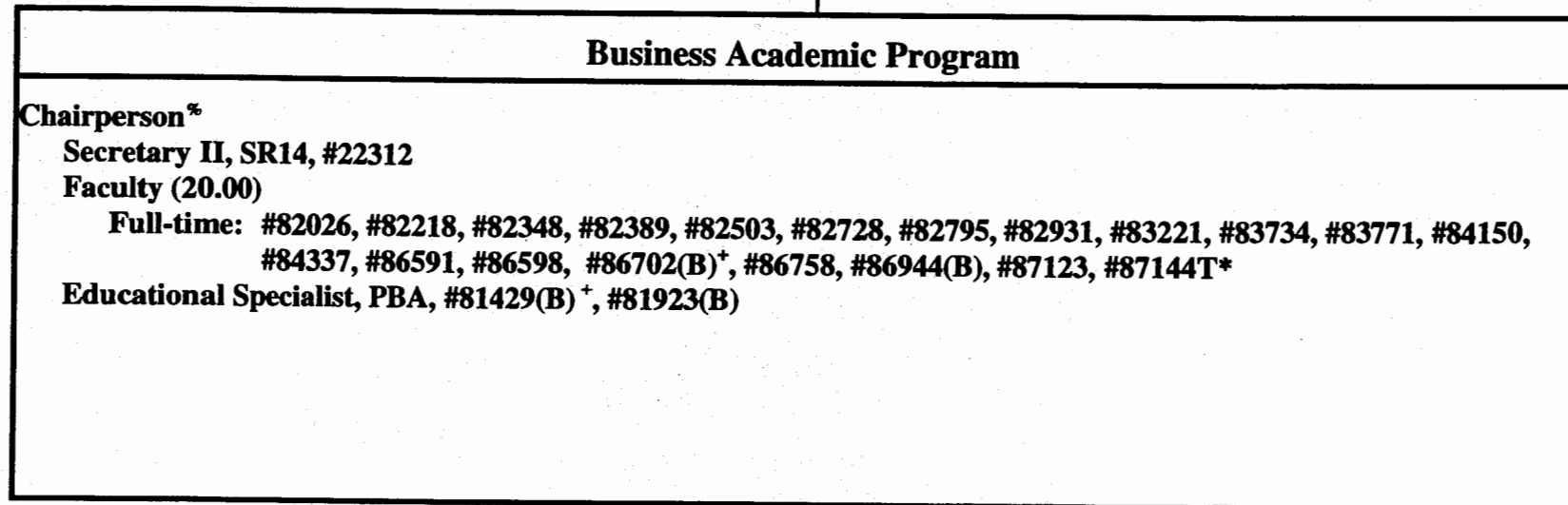
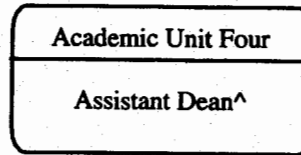
STATE OF HAWAII  
UNIVERSITY OF HAWAII  
KAPI'OLANI COMMUNITY COLLEGE

Organization Chart

Chart VIa

**CHART UPDATED**

DATE JUL 01 2004



^ Excluded from position count this chart

\* Temporary Position

% Chairperson is appointed from among the faculty positions

+ To be redescribed & submitted for classification review

General Fund  
(B) Special Funds

Perm  
18.00  
4.00

Temp  
1.00

STATE OF HAWAII  
UNIVERSITY OF HAWAII  
KAPI'OLANI COMMUNITY COLLEGE

Organization Chart

Chart VIb

CHART UPDATED

JUL 01 2004

DATE \_\_\_\_\_

Academic Unit Four

Assistant Dean^

**Hospitality Academic Program**

**Culinary Institute of the Pacific**

Program Director, #89029<sup>+</sup>

Chairperson<sup>%</sup>

Faculty (12.00)

Full-time: #82683, #82970, #83225, #83460, #83901, #84091, #84103, #84304, #84539, #86597, #86670, #86719

Secretary II, SR14, #16962

Cook III, WS 08, #22318 (B), #32863 (B)

Snack Bar Cashier, SR06, #22319 (B)

Educational & Academic Support Specialist, PBA, #81304 (B), #81420 (B), #81422 (B)

**Hospitality**

Chairperson<sup>%</sup>

Faculty (7.00)

Full-time: #82066, #82467, #83133, #83684, #84369, #86742, #86715

Clerk-Steno III, SR 11, #44592<sup>+</sup>

**Support Services**

Faculty (2.00)

#86741

#86706(B)

Educational Specialist, PBA, #80617(B)

^ Excluded from position count this chart

\* Temporary Position

% Chairperson is appointed from among the faculty positions

<sup>+</sup> To be redescribed & submitted for classification review

General Fund  
(B) Special Funds

Perm  
23.00  
8.00

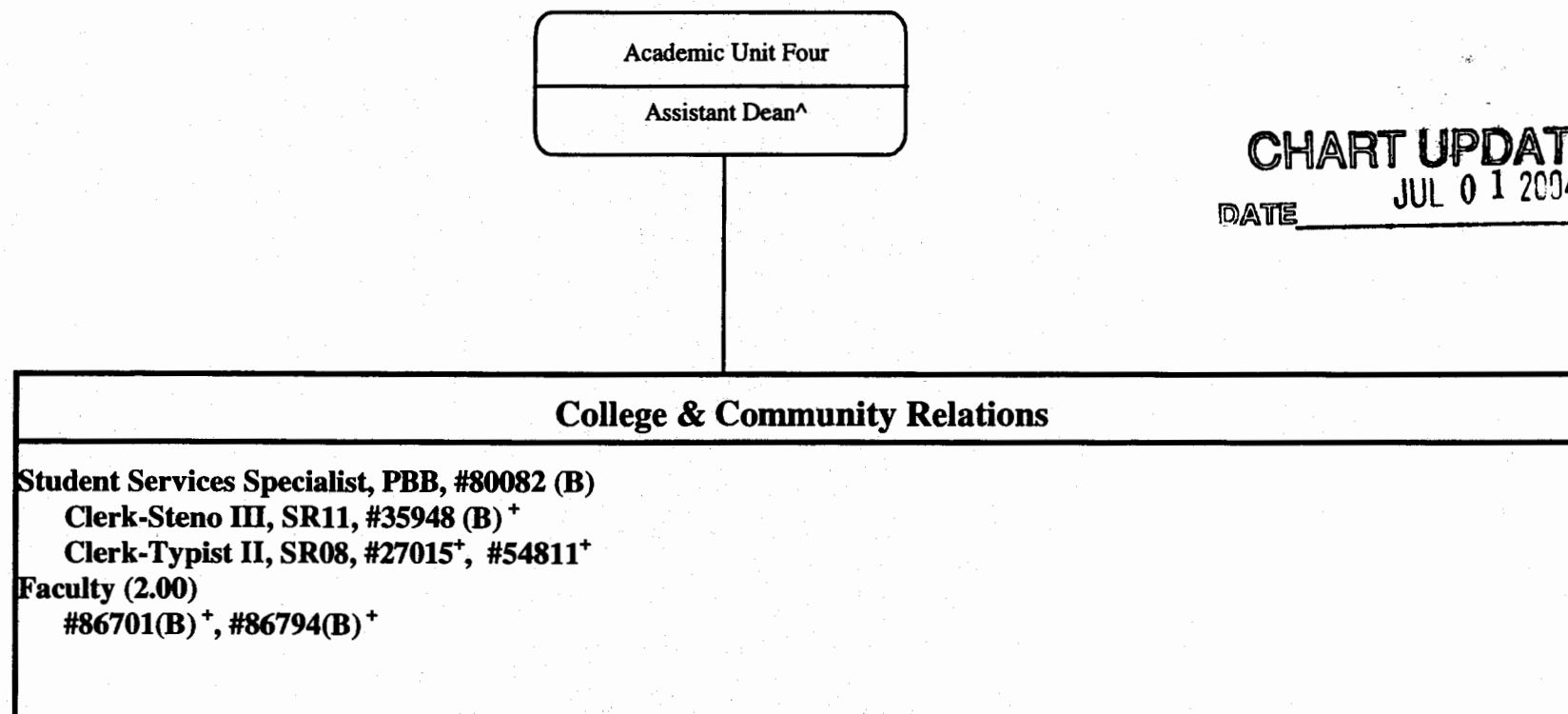
Temp

STATE OF HAWAII  
UNIVERSITY OF HAWAII  
KAPI'OLANI COMMUNITY COLLEGE

Organization Chart

Chart VIc

**CHART UPDATED**  
DATE JUL 01 2004



^ Excluded from position count this chart

\* Temporary Position

+ To be redescribed & submitted for classification review

General Fund  
(B) Special Funds

Perm  
2.00  
4.00

Temp



STATE OF HAWAII  
UNIVERSITY OF HAWAII  
KAPI'OLANI COMMUNITY COLLEGE

Organization Chart

Chart VII

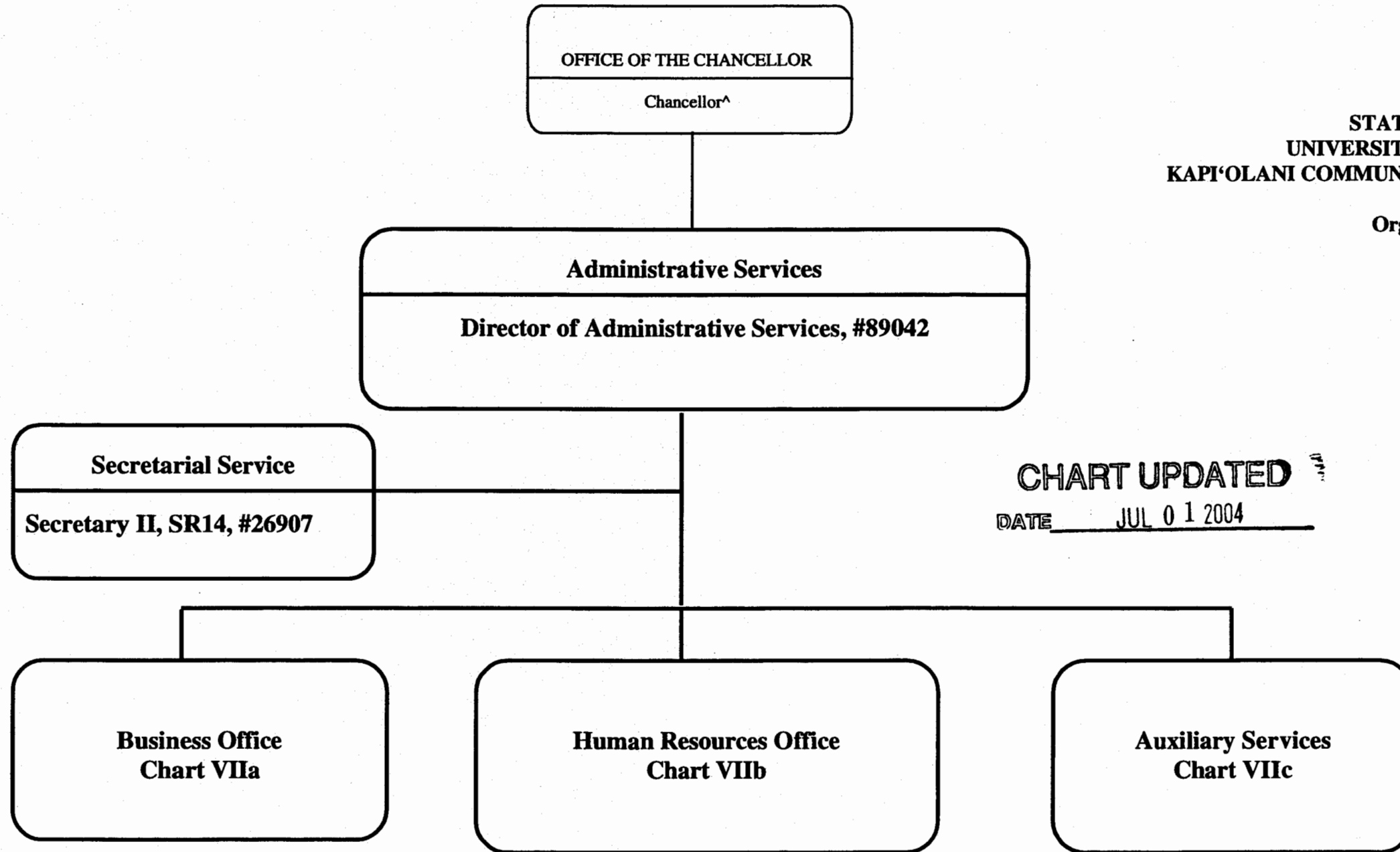


CHART UPDATED  
DATE JUL 01 2004

^ Excluded from position count this chart

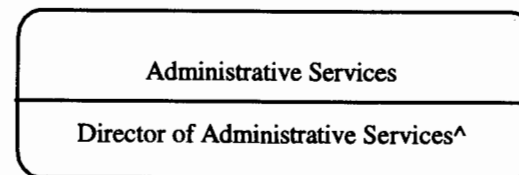
General Fund

Perm  
2.00

Temp

# CHART UPDATED

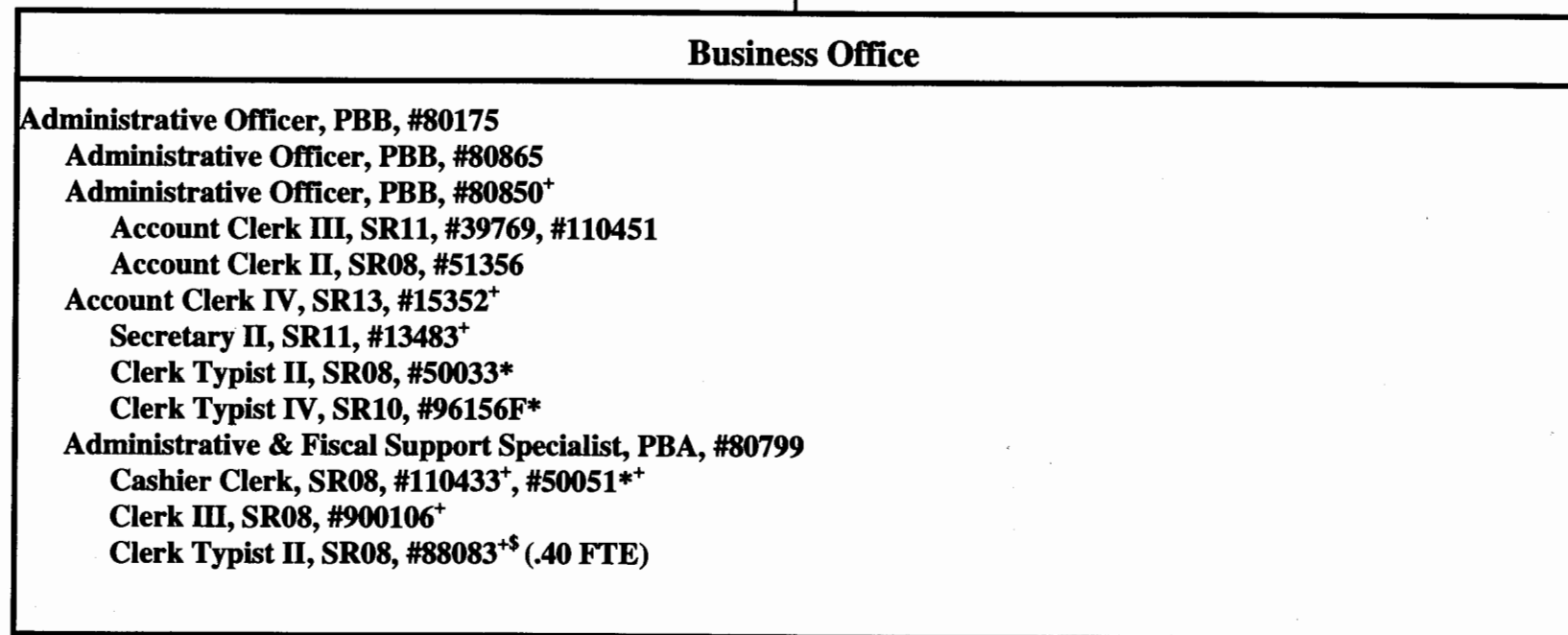
DATE JUL 0 1 2004



STATE OF HAWAI'I  
UNIVERSITY OF HAWAI'I  
KAPI'OLANI COMMUNITY COLLEGE

## Organization Chart

Chart VIIa



^ Excluded from position count this chart

\* Temporary Position

+ To be redescribed & submitted for classification review

\$ Proposed position classification

General Fund

Perm  
11.40

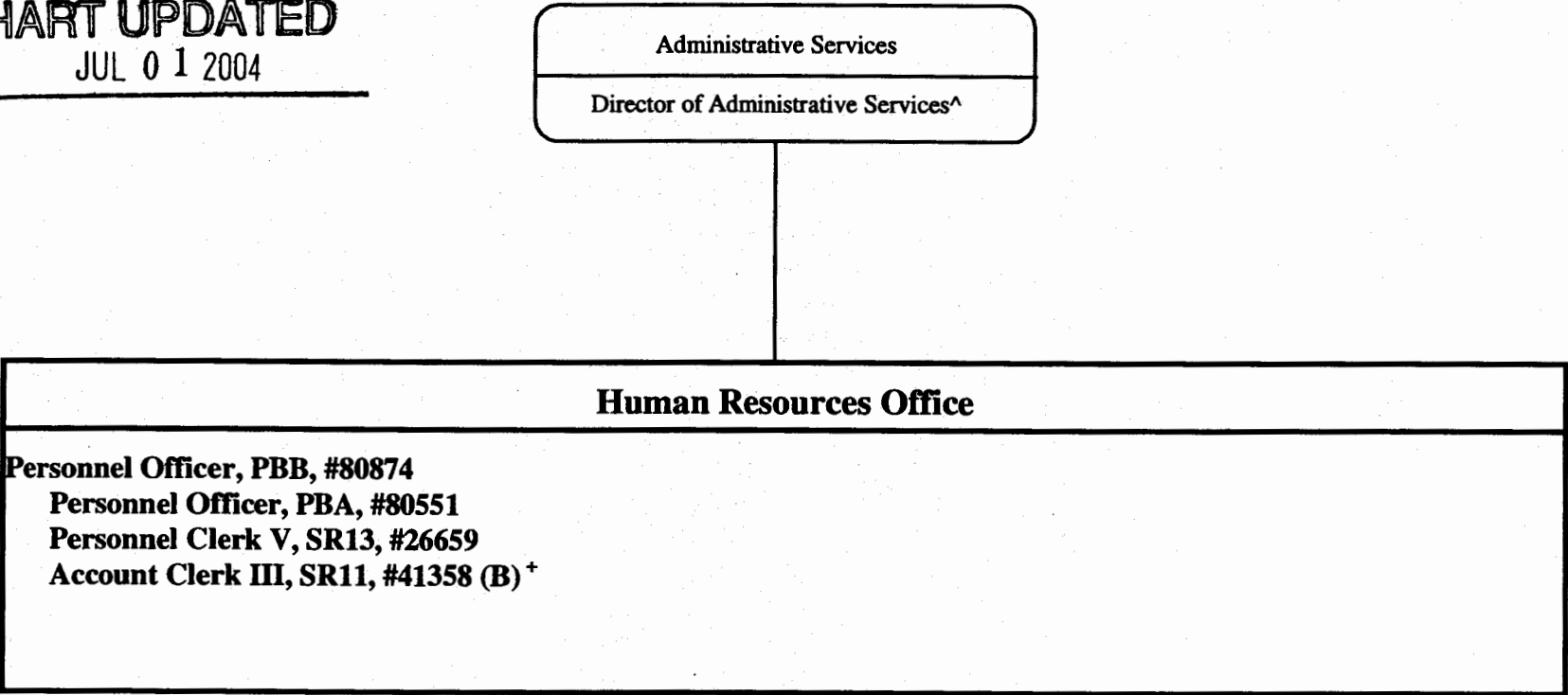
Temp  
3.00

STATE OF HAWAI'I  
UNIVERSITY OF HAWAI'I  
KAPI'OLANI COMMUNITY COLLEGE

Organization Chart

Chart VIIb

CHART UPDATED  
DATE JUL 01 2004



^ Excluded from position count this chart  
\*To be redescribed & submitted for classification review

	<u>Perm</u>	<u>Temp</u>
General Fund	3.00	
(B) Special Funds	1.00	

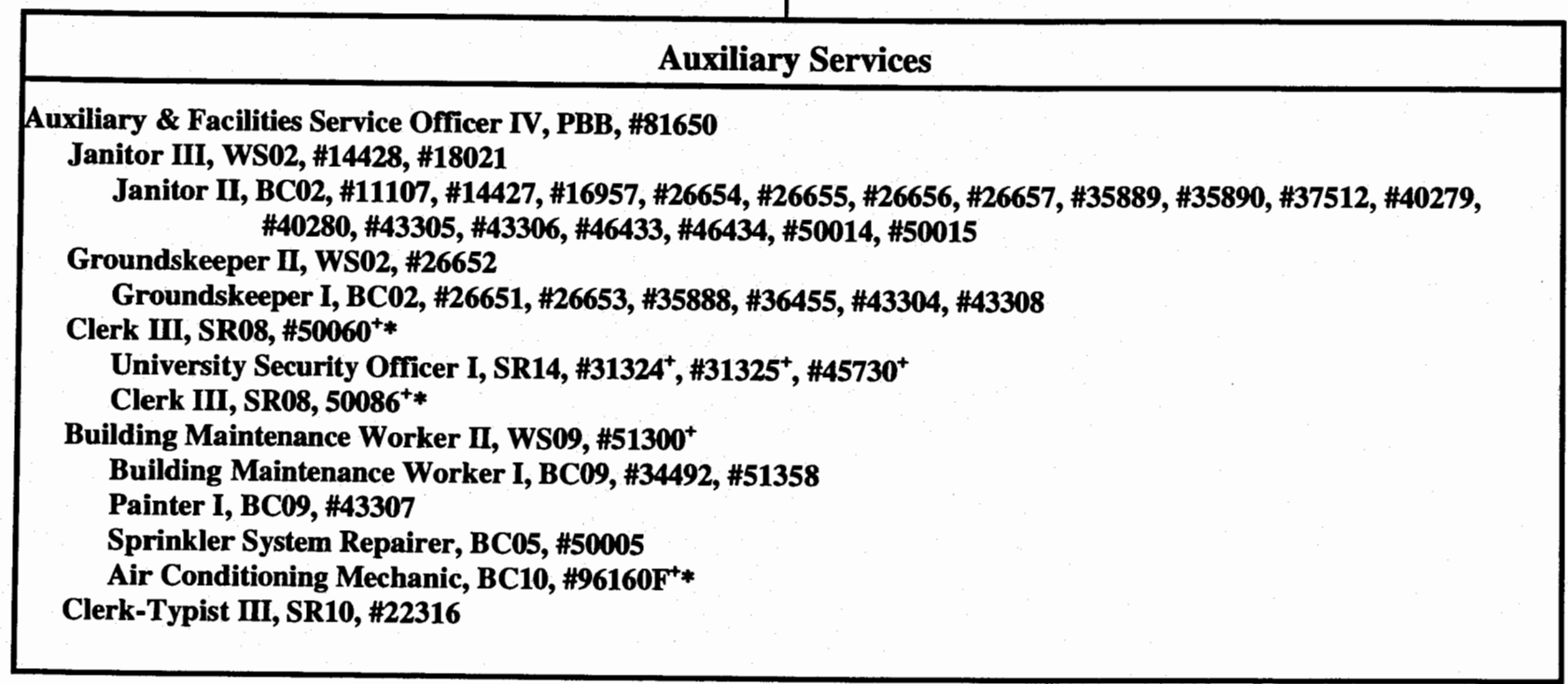
**CHART UPDATED**  
 DATE JUL 01 2004

Administrative Services  
 Director of Administrative Services^

STATE OF HAWAII  
 UNIVERSITY OF HAWAII  
 KAPI'OLANI COMMUNITY COLLEGE

Organization Chart

Chart VIIc



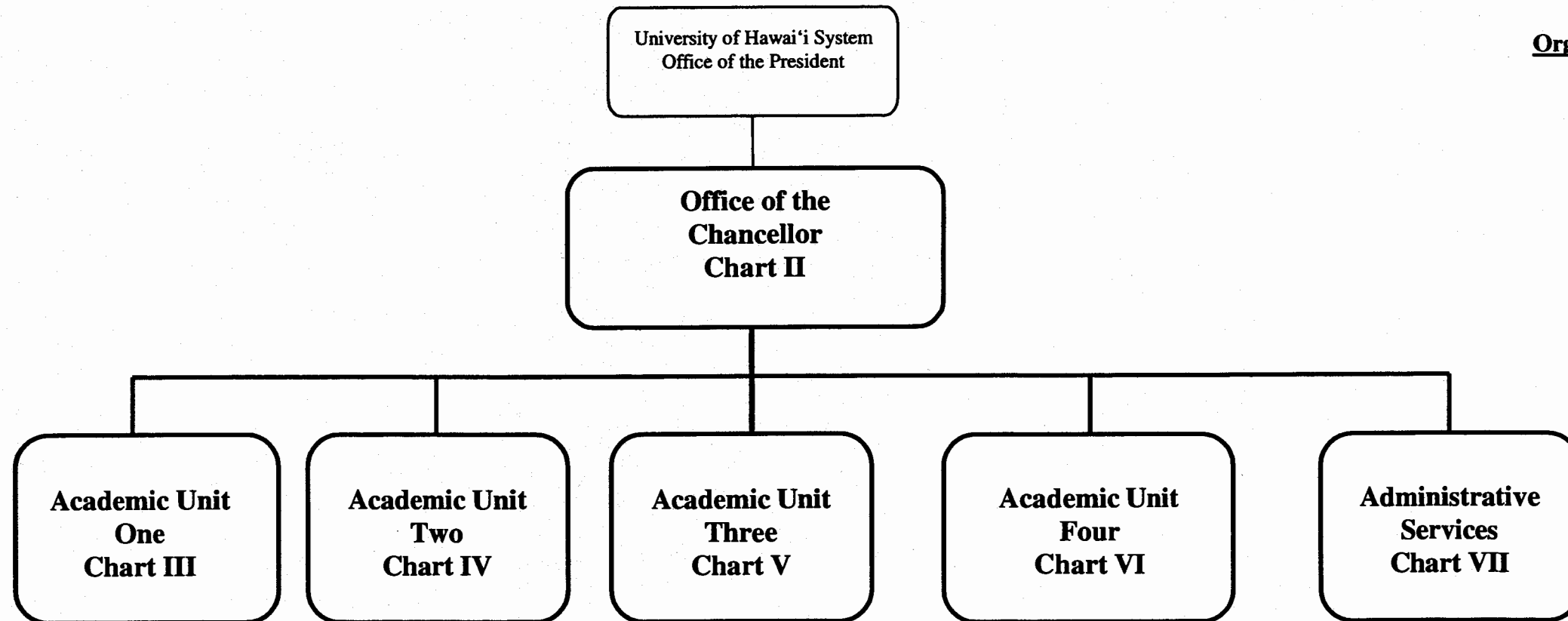
^ Excluded from position count this chart  
 \* Temporary Position  
 + To be redescribed & submitted for classification review

General Fund	<u>Perm</u>	<u>Temp</u>
	37.00	3.00

STATE OF HAWAII  
UNIVERSITY OF HAWAII  
KAPOLANI COMMUNITY COLLEGE

Organization Chart

Chart I



	<u>Perm</u>	<u>Temp</u>
General Fund	342.00	27.50
(B) Special Funds	24.00	

**SUPERSEDED**  
Date JUN 21 2005

**CHART UPDATED**  
DATE JUL -1 2004

STATE OF HAWAI'I  
UNIVERSITY OF HAWAI'I  
KAPI'OLANI COMMUNITY COLLEGE

Organization Chart

Chart II

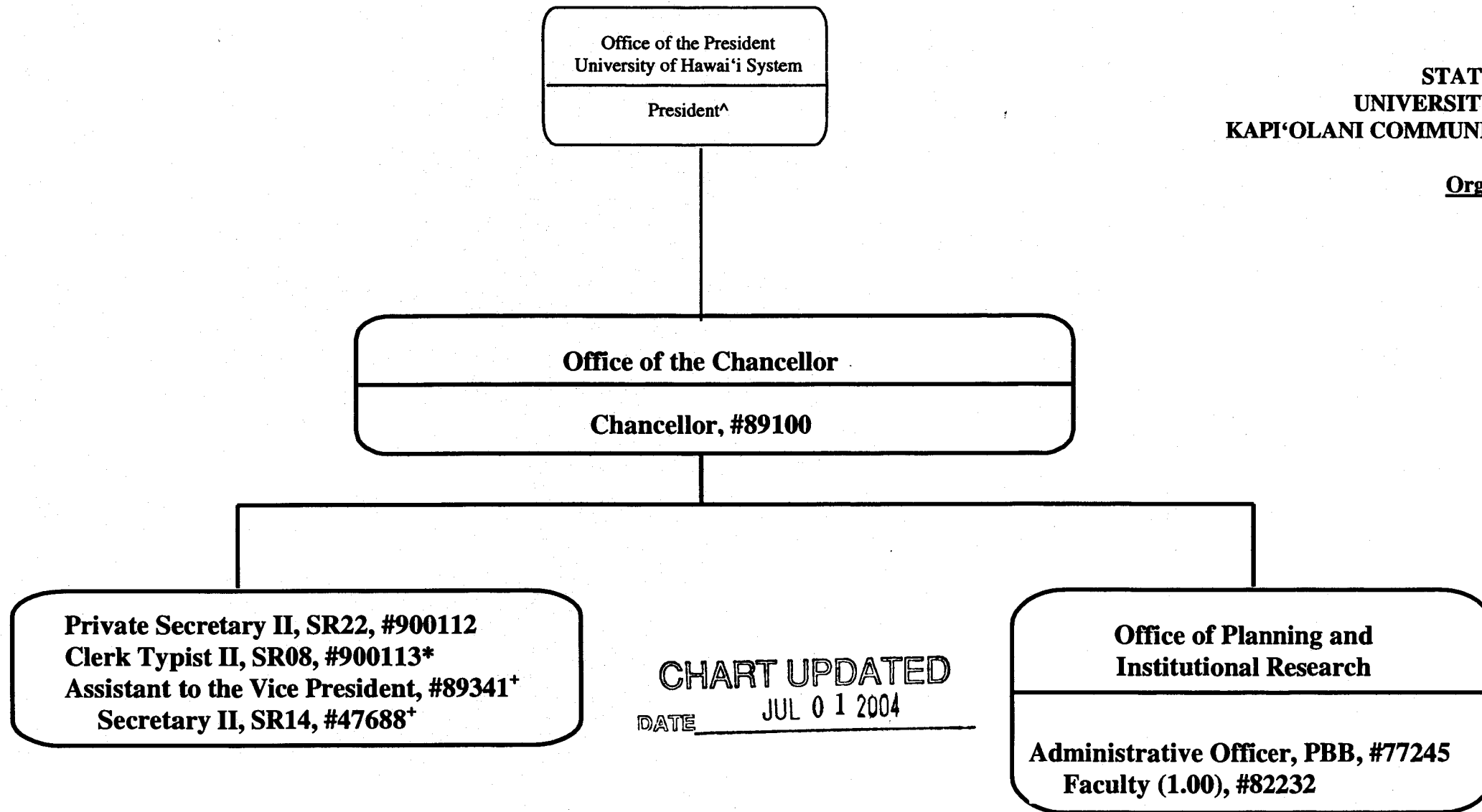


CHART UPDATED  
DATE JUL 0 1 2004

^ Excluded from position count this chart  
\*Temporary position  
+Position to redescribed

General Fund

Perm  
6.00

Temp  
1.00

**SUPERSEDED**  
**Date JUN 21 2005**