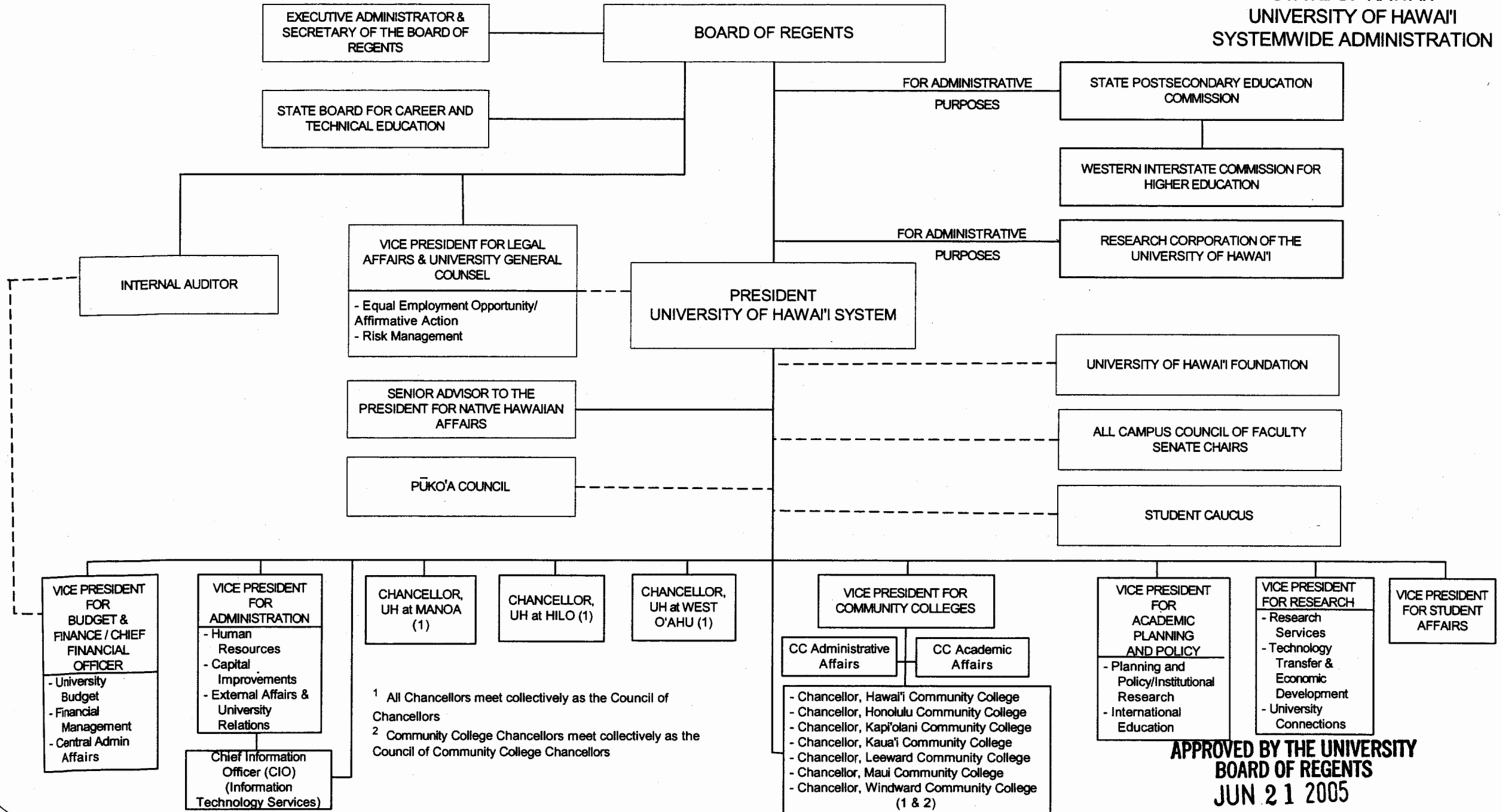


STATE OF HAWAII
UNIVERSITY OF HAWAII
SYSTEMWIDE ADMINISTRATION



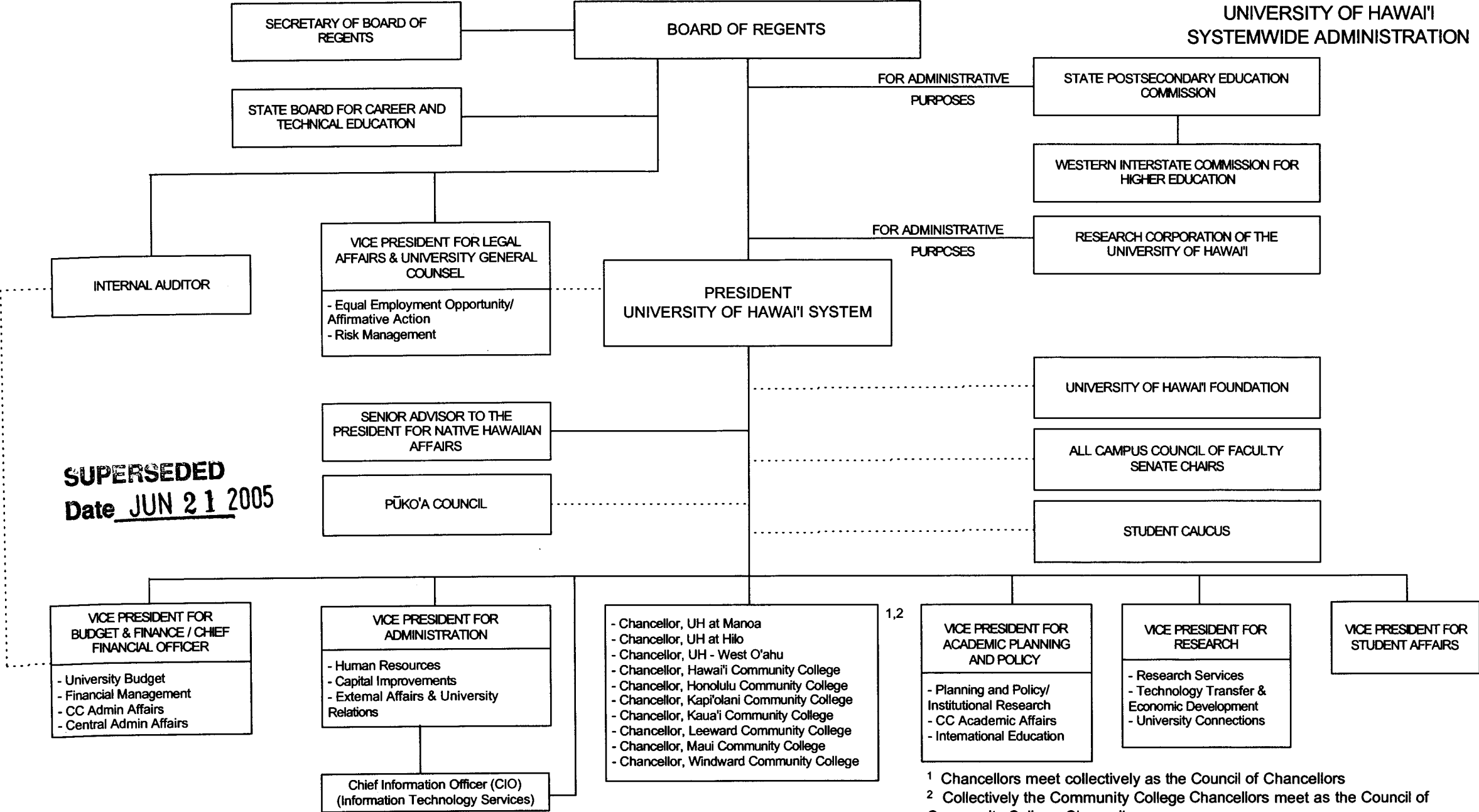
APPROVED BY THE UNIVERSITY
BOARD OF REGENTS
JUN 21 2005

Date

NOV 18 2004

Date

STATE OF HAWAII
UNIVERSITY OF HAWAII
SYSTEMWIDE ADMINISTRATION

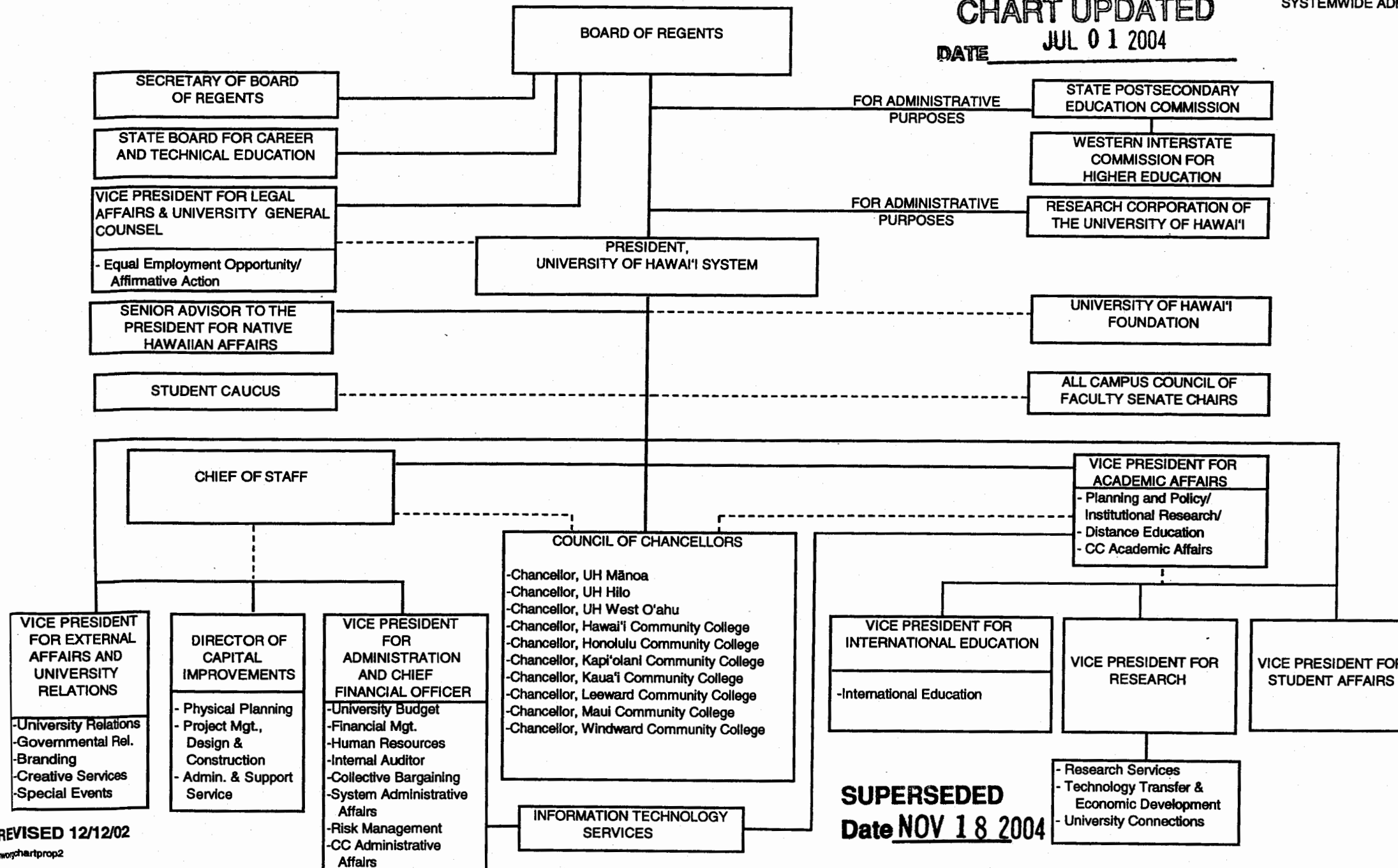


¹ Chancellors meet collectively as the Council of Chancellors

² Collectively the Community College Chancellors meet as the Council of Community College Chancellors

CHART UPDATED

DATE JUL 01 2004



REVISED 12/12/02

sworchartprop2

SUPERSEDED
Date NOV 18 2004

STATE OF HAWAII
UNIVERSITY OF HAWAII
SYSTEMWIDE ADMINISTRATION
STATE POSTSECONDARY EDUCATION
COMMISSION

ORGANIZATIONAL CHART

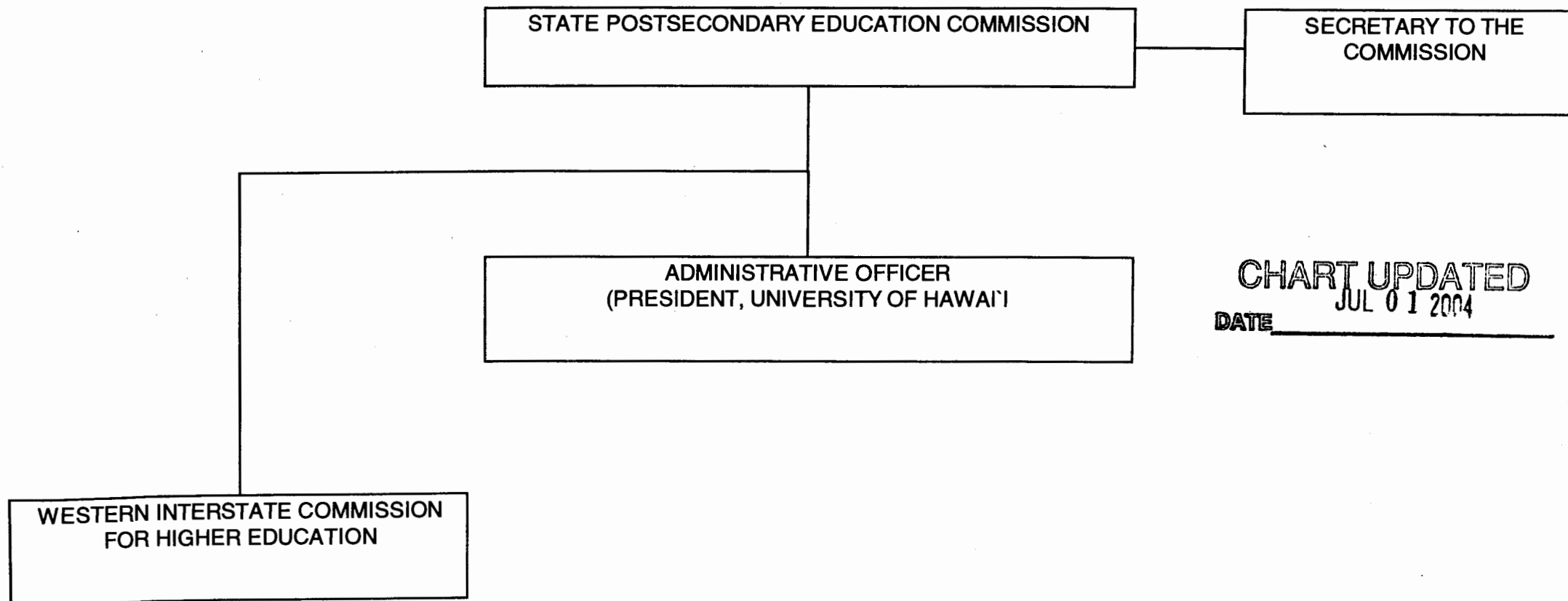


CHART UPDATED
JUL 01 2004
DATE _____

	<u>Perm</u>
General Fund	0.00

STATE OF HAWAII
UNIVERSITY OF HAWAII
SYSTEMWIDE ADMINISTRATION
SECRETARY OF THE BOARD OF REGENTS

POSITION ORGANIZATION CHART

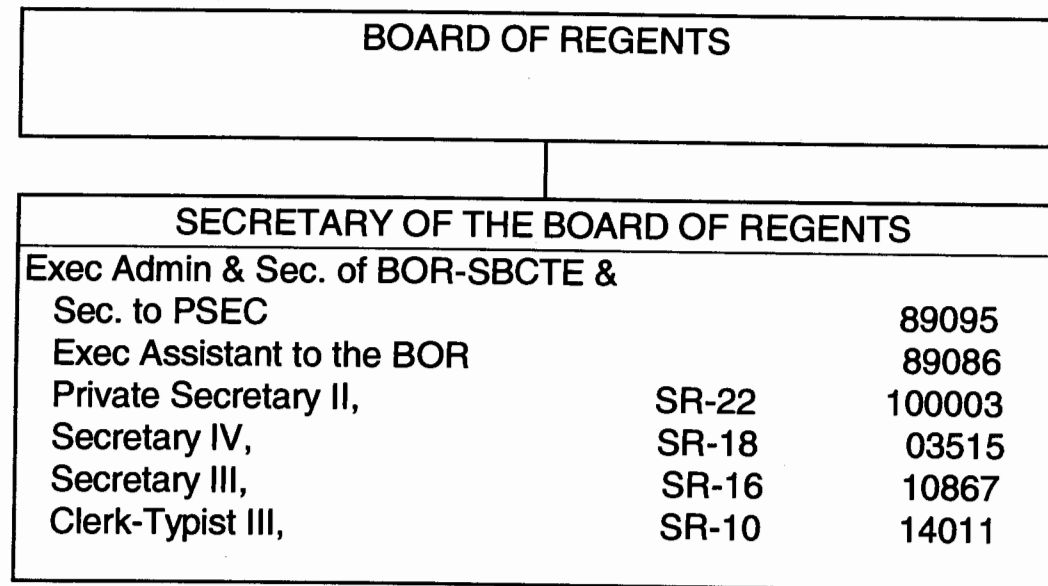
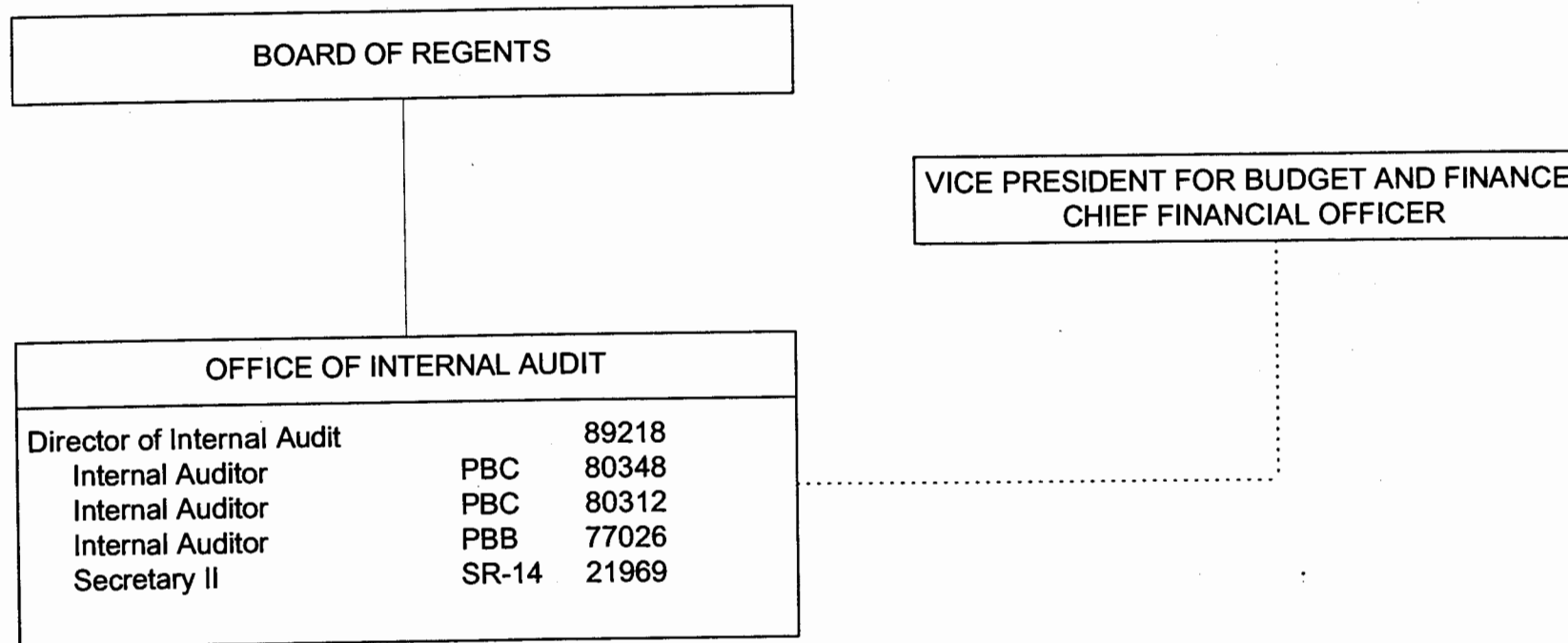


CHART UPDATED
DATE JUL 01 2004

STATE OF HAWAII
UNIVERSITY OF HAWAII
SYSTEMWIDE ADMINISTRATION
BOARD OF REGENTS
OFFICE OF INTERNAL AUDIT

POSITION ORGANIZATION CHART



¹ Excluded from position count

APPROVED BY THE UNIVERSITY
BOARD OF REGENTS
NOV 18 2004

Date

General Fund Perm
5.00

BOARD OF REGENTS

STATE OF HAWAII
UNIVERSITY OF HAWAII
SYSTEMWIDE ADMINISTRATION
OFFICE OF THE PRESIDENT, UH SYSTEM

POSITION ORGANIZATION CHART

OFFICE OF THE PRESIDENT, UH SYSTEM				
President				89058
Asst to Senior Executive				89172
Asst to Senior Executive				89362 ¹
Secretary I	SR-12			14208 ¹
Private Secretary III	SR-24			900069 ²

¹ To be redescribed
² Temporary position to be converted to permanent status using position count from Position No. 100041

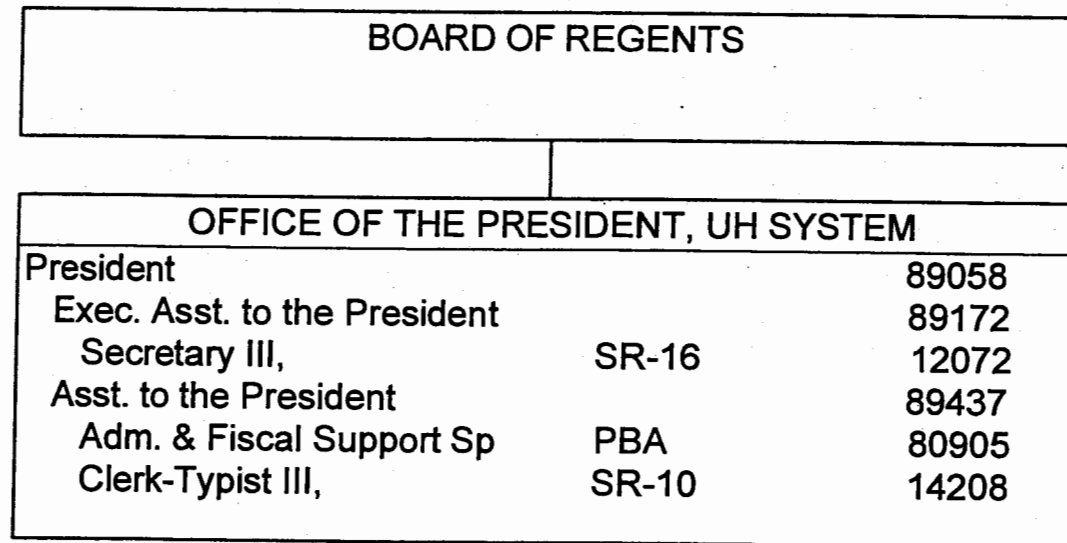
Authorized Position Count (No Current Classification): 81533
To be Abolished (Position Count to be Retained): 89437, 3650

APPROVED BY THE UNIVERSITY
BOARD OF REGENTS
NOV 18 2004
Date

General Fund Perm
8.00

STATE OF HAWAII
UNIVERSITY OF HAWAII
SYSTEMWIDE ADMINISTRATION
OFFICE OF THE PRESIDENT, UH SYSTEM

POSITION ORGANIZATION CHART



SUPERSEDED
Date NOV 18 2004

CHART UPDATED
JUL 01 2004
DATE _____

Reserve Positions: 81533, 14346

Perm
General Fund 8.00

STATE OF HAWAI'I
UNIVERSITY OF HAWAI'I
SYSTEMWIDE ADMINISTRATION
OFFICE OF THE CHIEF OF STAFF

POSITION ORGANIZATION CHART

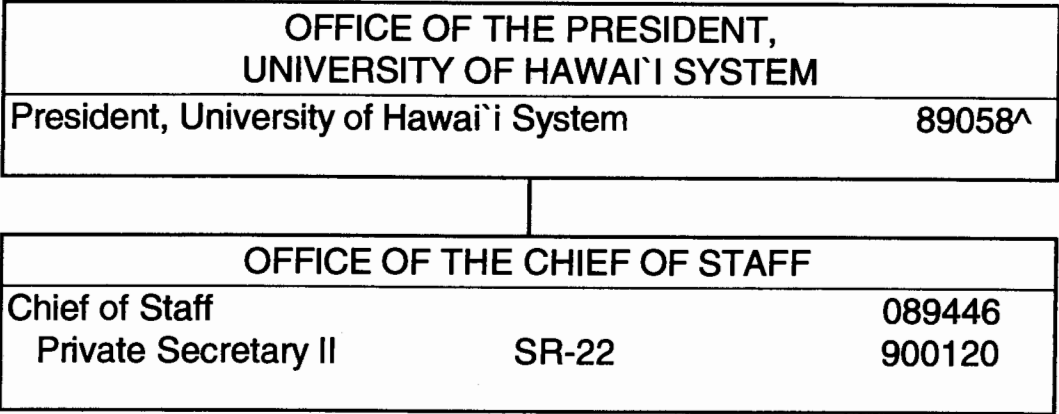


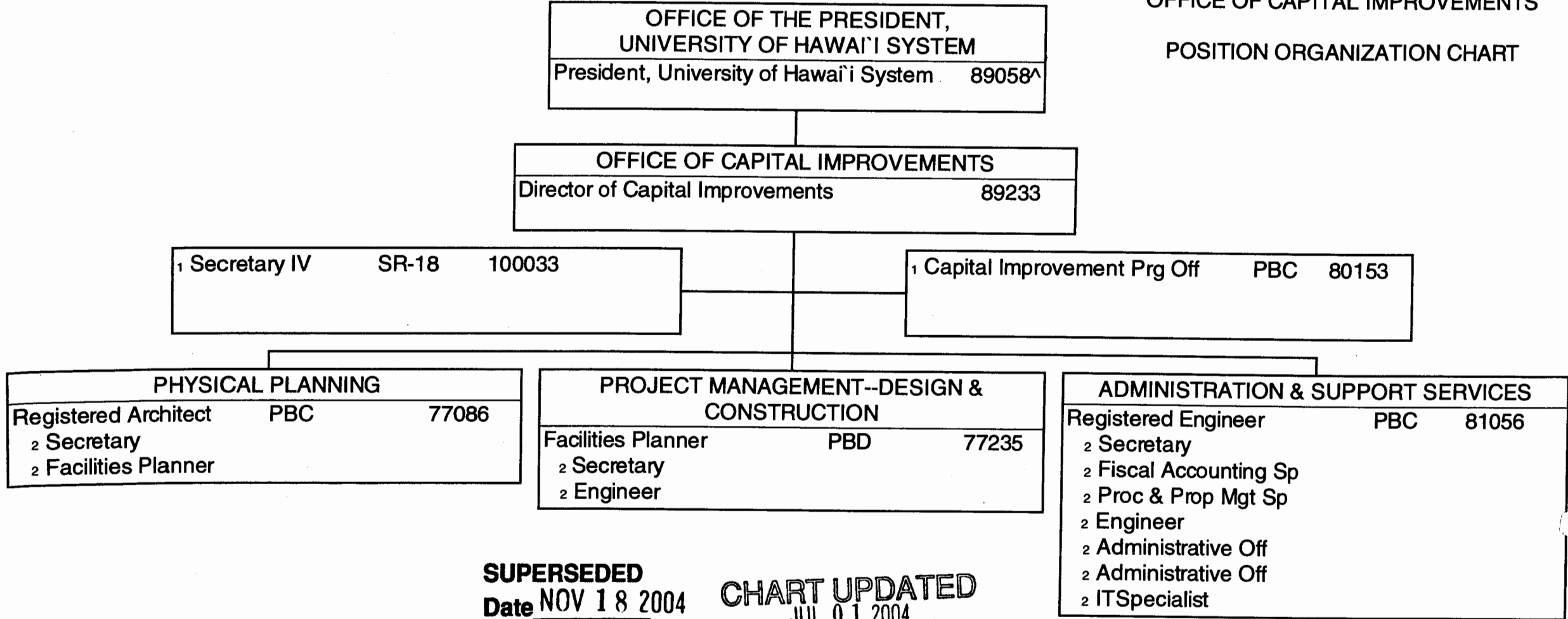
CHART UPDATED
DATE JUL 01 2004

SUPERSEDED
Date NOV 18 2004

^ Excluded from position count, this chart

STATE OF HAWAII
UNIVERSITY OF HAWAII
SYSTEMWIDE ADMINISTRATION
OFFICE OF CAPITAL IMPROVEMENTS

POSITION ORGANIZATION CHART



SUPERSEDED
Date NOV 18 2004 **CHART UPDATED**
DATE JUL 01 2004

Existing Reassigned Positions
General Fund 6.00

Positions to be Reassigned/Requested
General Funds 11.00

1 Reassignment; position to be redescribed
2 Position to be created via reassigned position within the University and/or to be requested

^ Excluded from position count, this chart